



BIG EAST WOMEN'S SOCCER

#5 Notre Dame vs. Cincinnati



Friday, Sept. 23, 2005
Alumni Field (Notre Dame, Ind.)



AMANDA CINALLI



CARRIE DEW

SUSAN PINNICK

LIZZIE REED

TALE OF THE TAPE

	NOTRE DAME	CINCINNATI
'05 Record (BIG EAST)	7-0-1 (1-0-0)	2-4-2 (0-1-0)
2004 Record	25-1-1	4-14-0
Starters Ret. from '04	9	7
Letterwinners Ret.	23/4	17/6
Recent Games	6-0 vs. DePaul, 3-0 vs. Michigan	0-1 vs. Louisville, 1-2 vs. Xavier
Goals Per Game	5.13 (41)	1.00 (8)
Goals-Against Avg.	0.64 (5)	1.18 (10)
Avg. Scoring Margin	+4.5	- 0.3
Shots Per Game	21.4	10.6
Shots Allowed/Gm	3.8	12.9
Shot Margin	+17.6	- 2.3
Shots On Goal All./Gm	2.0	5.8
Shooting Pct.	.240	.094
Shots Per Goal	4.2	10.6
Shots on Goal per Goal	2.4	5.8
Corner Kicks/Gm	6.3	4.3
CKs All./Gm	1.0	5.8
Avg. CK Margin	+5.3	- 1.5
Save Pct.	.688	.783
Shutouts	4	2
Games w/ 0-1 GA	3	4
Games w/ 2 GA	1	4
Games w/ 3-plus GA	0	0
Overtime Record	0-0-0	0-1-2
One-Goal Gm Record	0-1	2-4
Wins By 3-Plus Goals	7	0
Home Games	4-0-0	1-3-0
All Road Games	3-1-0	1-1-2
1st-Half Scoring	22-2	6-4
2nd-Half Scoring	19-3	2-5
Fouls Per Game	10.9	9.5
Yellow Cards/Red	7/0	6/0
Players with 5+ Goals	2	0
Players with 3+ Goals	7	1
Players with Goals	10	5
Players with 20+ Points	2	0
Players with 10+ Points	3	0
Players with Points	15	9
Seniors	8	4
Freshmen	6	8

GAME NOTES – Notre Dame owns a 4-1-1 series edge vs. Cincinnati but the Bearcats won the previous meeting (3-2 at ND, in 2nd round of '01 NAAs; previous game was 7-1 ND win in '97) ... the Irish are 76-8-2 (.895) at Alumni Field in the 7-year Randy Waldrum era (56-3-2/.943 vs. teams not in the NSCAA top-25) and own a 35-3-0 all-time record in postseason games at Alumni Field (UC's win in '01 was one of those rare losses) ... the Bearcats own '05 wins over Michigan State (1-0) and Central Michigan (1-0), with losses to William & Mary (1-2), Dayton (1-2), Louisville (0-1) and Xavier (1-2/OT) and ties vs. Ohio State (2-2) and Kentucky (2-2) ... see rosters and back page for additional stats and notes.

2005 NOTRE DAME SCHEDULE (7-1-0)

Vermont Classic	10/14 *Connecticut 7:30
8/26 vs. New Hampshire .. W, 11-1	10/16 *Providence 1:00
8/28 at Vermont W, 6-0	10/21 *Villanova 7:30
Notre Dame Classic	10/23 *Georgetown 1:00
9/2 #11 Florida W, 4-1	10/31 BE Quarterfinal 1:00
9/4 #25 Maryland W, 6-0	11/4, BIG EAST Semifinals/Final
Santa Clara Classic	6 (at Marquette)
9/9 at #6 Santa Clara L, 1-2	11/11, NCAA First, Second Rounds
9/11 vs. Gonzaga W, 4-1	13 (campus sites)
9/16 *DePaul W, 6-0	11/18- NCAA Third Round
9/18 Michigan W, 3-0	20 (campus sites)
9/23 *Cincinnati 5:00	11/25- NCAA Quarterfinals
9/25 *at Louisville 1:00	27 (campus sites)
9/30 *at Marquette 7:00	12/2, NCAA Semifinals/Final
10/2 *at South Florida 1:00	4 (College Station, TX)
10/7 *at Rutgers 7:00	* – BIG EAST Conference game
10/9 *at Seton Hall 1:00	

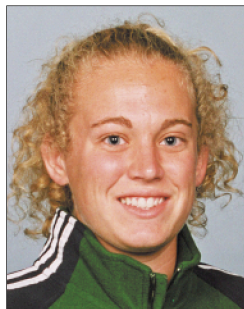
Top Scorers	Kerri Hanks, Fr., F (13G-3A, 29 pts)	Jenn Johannigman (3G, 6 pts)
	Katie Thorlakson, Sr., F (8G-12A, 28 pts)	Andrea Haney (2G, 4 pts)
	Amanda Cinalli, So., F (4G-5A, 13 pts)	
	Jen Buczkowski, Jr., F (3G-3A, 9 pts)	



Marketing
Services, Inc.



2005 Notre Dame Women's Soccer



#0 Nikki Westfall
Jr., G • Waterville, OH



#1 Erika Bohn
Sr., G • Brookfield, CT



#2 Kerri Hanks
Fr., F • Allen, TX



#3 Jannica Tjeder
So., F/M • Espoo, Finland



#4 Kim Lorenzen
Jr., D/M • Naperville, IL



#5 Amanda Cinalli
So., F/M • Maple Hts, OH



#6 Lauren Karas
So., G • Flower Mound, TX



#7 Katie Thorlakson
Sr., F • Langley, BC



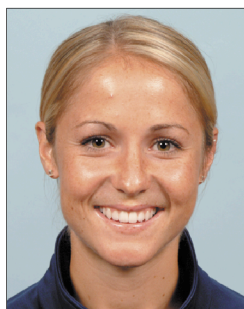
#8 Candace Chapman
Sr., D/F • Ajax, Ontario



#9 Jen Buczkowski
Jr., M • Elk Grove, IL



#10 Brittany Bock
Fr., M/F • Naperville, IL



#11 Annie Scheffer
Sr., M • Yakima, WA



#12 Ashley Jones
So., MD • Westlake Village, CA



#13 Maggie Manning
Sr., F • Lake Oswego, OR



#14 Jenny Walz
Sr., D/M • Bloomington, IL



#15 Lizzie Reed
Jr., M/F • Franklin Lakes, NJ



#16 Kerry Inglis
Fr., M/D • Fort Wayne, IN



#17 Susan Pinnick
So., F/M • South Bend, IN



#18 Christie Shaner
Jr., D • Ambler, PA



#19 Carrie Dew
Fr., D • Encinitas, CA



#20 Rebecca Mendoza
Fr., M • Garland, TX



#21 Claire Gallerano
Jr., M • Dallas, TX



#23 Molly Iarocci
Jr., F • Carefree, AZ



#24 Jill Krivacek
Jr., M • Geneva, IL



#25 Beth Koloup
Fr., M • Phoenix, MD



#26 Amber McMillin
Sr., D/F • West Harrison, IN



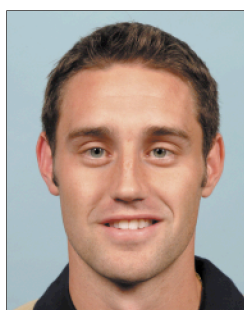
#28 Miranda Ford
Sr., D/M • Portola Valley, CA



Randy Waldrum
Head Coach



Dawn Greathouse
Assistant Coaching Staff



Ben Waldrum
Assistant Coaching Staff

2005 Notre Dame Fighting Irish (7-1-0 ... 25-1-1 in 2004)

No.	Name	Pos.	Ht.	Yr.	Hometown / Previous School	2005 Stats (career)
0	Nikki Westfall	G	5-6	Jr.	Waterville, OH / Anthony Wayne HS	2 GP (0.31 GAA, 6 SV, 14 GP)
1	Erika Bohn	G	6-0	Sr.	Brookfield, CT / Brookfield HS	1.01 GAA, 6 SV, 5 GS (0.72, 139 SV, 72 GS)
2	Kerri Hanks	F	5-6	Fr.	Allen, TX / Allen HS	13G-3A, 8 GP/6 GS
3	Jannica Tjeder	F/M	5-3	Jr.	Espoo, Finland	injured (1G-3A, 22 GP/8 GS)
4	Kim Lorenzen	D/M	5-6	Jr.	Naperville, IL / Naperville North HS	4 GS (3G-4A, 54 GP/45 GS)
5	Amanda Cinalli	F/M	5-8	So.	Maple Heights, OH / Laurel HS	4G-5A, 8 GP/6 GS (14G-10A, 35 GP/30 GS)
6	Lauren Karas	G	5-9	So.	Flower Mound, TX / Flower Mound HS	0.30 GAA, 5 SV ('04: 1.24, 13 SV, 11 GP)
7	Katie Thorlakson	F	5-3	Sr.	Langley, BC / Walnut Grove HS	8G-12A, 8 GS (45G-50A, 78 GP/71 GS)
8	Candace Chapman (C)	D/F	5-7	Sr.	Ajax, ONT / Bishop O'Connor HS	2A, 8 GS (18G-17A, 76 GP/63 GS)
9	Jen Buczkowski	M	5-7	Jr.	Elk Grove, IL / Elk Grove HS	3G-3A, 8 GS (14G-20A, 59 GP/56 GS)
10	Brittany Bock	M/F	5-7	Fr.	Naperville, IL / Neuqua Valley HS	3G-2A, 7 GP/5 GS
11	Annie Schefter (C)	M	5-8	Sr.	Yakima, WA / West Valley HS	3A, 8 GP/6 GS (8G-15A, 59 GP/47 GS, inj. '02)
12	Ashley Jones	M/D	5-4	So.	Westlake Village, CA / Westlake HS	8 GP/6 GS (1G-4A, 35 GP/12 GS)
13	Maggie Manning	F	5-6	Sr.	Lake Oswego, OR / Jesuit HS	3G-2A, 7 GP/1 GS (10G-7A, 60 GP/7 GS)
14	Jenny Walz	D/M	5-3	Sr.	Bloomington, IL / Bloomington HS	2 GP (2A, 34 GP/8 GS, inj. '03)
15	Lizzie Reed	M/F	5-7	Jr.	Franklin Lakes, NJ / Ramapo Reg. HS	2A, 7 GP/2 GS (3G-5A, 57 GP/20 GS)
16	Kerry Inglis	M/D	5-6	Fr.	Fort Wayne, IN / Snider HS	injured
17	Susan Pinnick	F/M	5-4	So.	South Bend, IN / St. Joseph's HS	3G, 7 GP/1 GS (injured in '04)
18	Christie Shaner	D	5-8	Jr.	Ambler, PA / Germantown Academy	2A, 8 GP/7 GS (3G-5A, 58 GP/52 GS)
19	Carrie Dew	D	5-9	Fr.	Encinitas, CA / La Costa Canyon HS	1G, 8 GS
20	Rebecca Mendoza	M	5-2	Fr.	Garland, TX / North Garland HS	5 GP
21	Claire Gallerano	M	5-4	Jr.	Dallas, TX / Ursuline Academy	5 GP/1 GS (24 GP/2 GS)
23	Molly Iarocci	F	5-7	Jr.	Carefree, AZ / Xavier Prep	2 GP (1 G, 20 GP)
24	Jill Krivacek	M	5-10	Jr.	Geneva, IL / Rosary HS	1G, 5 GP/3 GS (4G-5A, 55 GP/32 GS)
25	Beth Koloup	M	5-6	Fr.	Phoenix, MD / Notre Dame Prep	1G-1A, 2 GP
26	Amber McMillin	D/F	5-6	Sr.	West Harrison, IN / Franklin County HS	1A, 4 GP (3A, 20 GP)
28	Miranda Ford	D/M	5-8	Sr.	Portola Valley, CA / Palo Alto HS	3 GP (1G, 30 GP/4 GS)

Head Coach: Randy Waldrum (7th season)

Assistant Coaching Staff: Dawn Greathouse, Ben Waldrum, Kimberly Carpenter

2005 Cincinnati Bearcats (2-4-2 ... 4-14-0 in 2004)

No.	Name	Pos.	Ht.	Yr.	Hometown / Previous School (s)	2005 Stats ('04)
00	Brittney Hansen	G	5-6	Fr.	Toledo, OH / St. Ursula Academy	-
1	Sherry Slye	G	5-6	Sr.	Cincinnati, OH / Roger Bacon HS	1.18 GAA, 36 SV (1.45 GAA, 9 GP/6 GS)
2	Ashley Roush	M/D	5-4	Sr.	Dublin, OH / Dublin Scioto HS	8 GP/1 GS (-)
3	Jessica Legge	M/D	5-6	Jr.	Aurora, IN / South Dearborn HS	- (18 GP/6 GS)
4	Jenn Johannigman	F	5-3	Fr.	Cincinnati, OH / Seton HS	3G, 8 GS
5	Marie Strelka	F	5-8	Sr.	Trumbull, CT / Trumbull HS	7 GP/2 GS (1G, 7 GP/2 GS)
6	Andrea Haney	M/F	5-6	So.	Hilliard, OH / Hilliard Davidson HS	2G, 8 GP/6 GS (2G-1A, 17 GP/13 GS)
7	Ana Farmer	F	5-9	Jr.	Renfrewshire, Scotland / Paisley Grammar	6 GP (1G, 15 GP/6 GS)
8	Becky Imhoff	M	5-5	Jr.	Cincinnati, OH / McNicholas HS	2A, 8 GP/7 GS (1G-2A, 18 GS)
9	Gigi Ernst	D	5-6	So.	Plain City, OH / Bishop Watterson HS	8 GS (18 GS)
10	Amy May	F	5-4	Jr.	Hudson, OH / Walsh Jesuit HS	- (2 GP)
11	Rachael Epps	D	5-4	Jr.	Grapevine, TX / Grapevine HS	3 GP (1G-1A, 16 GP/10 GS)
12	Anna Barrett	M	5-3	Jr.	Austin, TX / St. Michael's Academy	1 GP (6 GP)
13	Jen Leiter	D/M	5-6	Jr.	Cincinnati, OH / Summit Country Day	1A, 8 GS (17 GP/13 GS)
14	Nicole Sanda	F	5-8	Fr.	North Royalton, OH / Padua Franciscan	3 GP
15	Chelsea Kindschuh	M	5-8	Fr.	West Chester, OH / Lakota East HS	1G-1A, 8 GS
16	Lindsey Noteboom	M	5-5	Fr.	Hurst, TX / Birdville HS	2A, 8 GS
17	Heather Haney	F/D	5-4	Jr.	Hilliard, OH / Hilliard Davidson HS	8 GP (-)
18	Cara Alldred	D/M	5-8	So.	Batavia, OH / McNicholas HS	1 GP (1G-1A, 15 GS)
19	Kate Norton	D	5-8	Jr.	Rector, PA / Greensburg Central Cath. HS	1G-1A, 8 GS (12 GP/5 GS)
20	Jamie Clark	M	5-6	Sr.	Maryville, TN / Maryville HS	- (15 GP)
21	Meredith Whitehead	F	5-8	So.	Akron, OH / Canton McKinley HS	-
22	Lauren Buland	F	5-9	Sr.	Indianapolis, IN / Lawrence Central HS	6 GP (17 GP/4 GS)
23	Kristen May	F	5-5	Fr.	Hudson, OH / Walsh Jesuit HS	7 GS
24	Teresa Smolilo	F	5-1	Fr.	Seven Hills, OH / Padua Franciscan HS	-
25	Kim Sykes	D	5-6	Fr.	Cincinnati, OH / Sycamore HS	1G, 8 GS

Head Coach: Meridy Glenn (22nd season)

Assistant Coaches: Becki Poeppelmeier, Stefani Workman

NOTRE DAME TEAM NOTES – The Irish lead the nation in scoring (5.13 goals/gm; 41 goals total) but have allowed 5 goals on just 15 opponent shots on goal ... the 2-1 loss at Santa Clara was just the second regular-season defeat for the Irish since late in 2002 (44-2-2) ... Notre Dame's current players have combined for 913 career games played (555 starts) ... the '05 team became ND's first ever to score 4-plus goals in the first 4 games of a season ... Randy Waldrum is 126-21-5/.845 in six-plus seasons at ND and has eclipsed 300 overall wins as a college coach (309-126-24) ... Notre Dame's 2005 roster includes players from 12 states, two Canadian provinces and Finland ... Ashley Jones and Jannica Tjeder both posted 4.0 semester GPAs as freshmen in 2004-05 (as did '05 graduate Mary Boland).

DYNAMIC DUO – **Katie Thorlakson** (8G-12A; 28 pts/4th in nation) and **Kerri Hanks** (13G-3A; 29 pts/3rd in nation) rank as the nation's top-scoring tandem in 2005 ... Thorlakson (45G-50A) is the 22nd player in Div. I women's soccer history to reach 45G-45A in her career (16 have been "50-50" players) ... Hanks earned national player-of-the-week honors after becoming the first ND freshman in 13 years with a hat trick in the opener (vs. UNH) and adding 4G-1A vs. Vermont (most goals ever by ND player in back-to-back games; tied ND record for goals in a game) ... Hanks went on to reach 10 goals quicker than any other player in ND history (4 gms) ... Hanks and Monica Gerardo (in '95) are the only ND players ever to score in the first four games of a season ... the ND record for goals by a freshman is 23 (by Anne Makinen, in '97) ... Thorlakson's 2G-4A vs. UNH are the most pts (8) ever by an ND player in an opener (that game allowed her to tie an ND record by registering a point in her 12th straight fall game with the Irish) ... Thorlakson, Hanks and **Amanda Cinalli** (4G-5A) give ND a forward trio that already has combined for 25 goals and 20 assists (70 pts) ... Thorlakson ranks 7th in ND history with 50A (3 behind Jen Grubb) and 10th with 140 pts (2 back of Rosella Guerrero) ... she has totaled 13 corner-kick assists in the past two seasons (5 in '05) ... Thorlakson has 13G-15A in her past 10 home games (86 pts/29G-28A at home in '03-'05 seasons) ... she also has played in all 78 games of her ND career, has points in 17 of her past 19 games with the Irish, has scored or assisted on 44 of ND's past 69 goals (64%) and has totaled 14 gamewinning goals to go along with 15 gamewinning assists (her 43 career gamewinning points rank 6th in ND history, just 8 shy of Jenny Streiffer's record).

IRISH PLAYER NOTES – **Jen Buczkowski** has scored 6 of ND's past 17 gamewinning goals ... all 8 of Annie Scheffer's goals with ND have come at home ... **Christie Shaner** was named to *Soccer America's* national team of the week after playing a lead role in last week's wins over DePaul and Michigan, helping overcome the absence of three key defensive players (**Erika Bohn**, **Kim Lorenzen** and **Jill Krivacek**) who are sidelined by injury/illness ... former Cal-South state ODP teammates **Ashley Jones** (left back) and **Carrie Dew** (central defender) have stepped forward to play key roles on the 2005 ND back line ... Buczkowski has registered 10 of 13 career goals and 36 of her 48 points (74%) with the Irish in the confines of Alumni Field ... she and Scheffer have played in all 59 games the past three seasons while Shaner (56 straight) has played in 58 of the 59 (**Lizzie Reed** in 57 of 59).

TRENDY – ND owns an active 60-game home unbeaten streak vs. BIG EAST teams (59-0-1, since '95) and has won 19 straight at home overall ... the Irish are 51-1-0 in their past 52 games when scoring first ... ND has trailed in just 12 of the past 64 games for a total of 283 minutes (5% of the total time), going 56-6-2 in that stretch ... the 4-1 win over #11 Florida marked the 6th time in the Waldrum era (since '99) that the Irish have defeated an NSCAA top-20 opponent by 3-plus goals ... ND owns a 213-game winning streak when taking a 2-0 lead (236-0-1 all-time) ... the Irish are unbeaten in their past 18 overtime games (13-0-5), dating back to early in the '99 season ... ND is riding a 70-8 scoring edge over the past 18-plus games ... the Irish have held 29 of the past 31 opponents to 0-1 goals ... ND has allowed just 28 first-half goals in the '01-'05 seasons (101 GP; 0.28/gm), including just six opponent 1st-half goals in the '04 (4) and '05 (2) seasons (35 GP) ... the Irish own a 171-14-3 all-time record (.918) at Alumni Field ... ND is 306-9-12 (.954) all-time when holding the opponent to 0-1 goals (108-3-5 since Sept. 9, 1999) and 217-3-1 (.984) when scoring 3-plus goals (119-1-0 since Oct. 6, 1995) ... the Irish recently played the program's 400th game, with the all-time record now standing at 326-58-17 (.834).

**NSCAA Coaches Poll (Sept. 19)
Team (Updated Record; Prev.)**

1. North Carolina (8-0-0; 1)
2. Penn State (8-0-0; 2)
3. Portland (8-0-0; 3)
4. UCLA (7-1-0; 6)
5. Santa Clara (5-1-1; 4)
6. Notre Dame (7-1-0; 5)
7. Duke (6-0-1; 7)
8. Wake Forest (5-1-1; 10)
9. Boston College (6-0-1; 9)
10. California (6-1-1; 8)
11. Pepperdine (6-0-1; 11)
12. Florida State (7-0-0; 16)
13. Virginia (5-2-1; 12)
14. Texas A&M (5-1-0; 14)
15. BYU (8-0-0; NR)
16. Wisconsin (5-2-1; 15)
17. Florida (5-2-0; 13)
18. Connecticut (5-2-1; 18)
19. Cal Poly (6-0-2; 17)
20. Marquette (8-0-1; 23)
21. Texas (3-1-1; 21)
22. Arizona (4-1-2; 22)
23. West Virginia (3-3-2; 20)
24. Yale (6-2-0; NR)
25. Cal State Fullerton (6-2-0; NR)

ARV: Tenn., Oregon St., USC, Kansas, Nebraska, Georgia, Dartmouth

Tuesday, Sept. 20

Marquette 2, at Loyola 0

Wednesday, Sept. 21

BC 0, at Northeastern 0

Thursday, Sept. 22

Virginia Tech at Duke
UNC at Florida State
Virginia at Wake Forest

Friday, Sept. 23

Indiana at Penn State
Arizona at Portland
Denver at UCLA
Saint Louis at Santa Clara
California at BYU
UNLV at Pepperdine
Texas A&M at Missouri
Wisconsin at Iowa
Alabama at Florida
Washington State at Cal Poly
Marquette at Connecticut
Texas at Oklahoma State
West Virginia at Syracuse

Saturday, Sept. 24

Eastern Michigan at BYU
Yale at Princeton

Sunday, Sept. 24

UNC at Miami
Purdue at Penn State
Cal Poly at Santa Clara
Virginia at Duke
Va. Tech at Wake Forest
Boston College at Clemson
Denver at Pepperdine
NC State at Florida State
Texas A&M at Kansas
Wisconsin at Illinois
Auburn at Florida
Connecticut at South Florida
Providence at Marquette
Texas at Oklahoma
UC Santa Barbara at Arizona
St. John's at West Virginia
CS Fullerton at LMU

Notre Dame Women's Soccer 2005 Quick Glance

2004 records: 25-1-1 (NCAA champions; BIG EAST regular-season champs/9-0-1)

Letterwinners Returning/Lost: 20/5 (9 starters returning; 13 of top 15 players returning)

Top Returners (note career stats are pre-2005; see roster for updated career stats):

Katie Thorlakson (F, Sr.; Langley, BC) – 2005 preseason All-American; *Soccer America* 2004 National Player of the Year (23G-24A); Canadian National Team; career: 37G-38A (70 GP/63 GS)

Candace Chapman (F/D, 5th-Yr.; Ajax, ONT) – '05 preseason All-American; 3rd-team all-BIG EAST in '04, as F (12G-8A); '02 All-American (D); Canadian Nat'l Team; career: 18G-15A (67 GP/55 GS)

Jen Buczkowski (M, Jr.; Elk Grove, IL) – 2005 preseason All-American; '04 All-American (8G-11A); '03 Freshman All-American; U.S. Under-21 National Team; career: 12G-17A (51 GP/48 GS)

Erika Bohn (G, Sr.; Brookfield, CT) – '05 preseason BIG EAST goalkeeper of the year; defensive MVP of '04 College Cup; led nation with 0.41 GAA in '04; U.S. U-21 Nat'l Team; 0.69 career GAA

Christie Shaner (Jr., D; Ambler, PA) – all-BIG EAST in 2004 (3rd tm) and '03 (2nd tm, rookie of the year)

Jill Krivacek (Jr., M; Geneva, IL) – 3rd team all-BIG EAST in 2004; fills def. midfield role

Annie Scheffer (M, Sr.; Yakima, WA) – co-captain (with Chapman); 4G-7A in 2004; former U.S. Under-19 player

Kim Lorenzen (D, Jr.; Naperville, IL) – regular at right back (50 GP/41 GS in 2003-04, 3G-4A)

Amanda Cinalli (F, So.; Maple Hts. OH) – Fr. All-American, 1st team all-BE in '04 (10G-5A)

Top Newcomers (note that Hanks and Pinnick were 2004 signees)

Kerri Hanks (F; Allen, TX) – 22G in 30 GP with U.S. U-19s; also top scorer with Dallas Texans

Brittany Bock (M, Naperville, IL) – U.S. U-20 pool; 24G for Neuqua Valley HS '05 state champs

Carrie Dew (D, Encinitas, CA) – 2-time CIF player of the year; product of San Diego Surf club

Susan Pinnick (F, South Bend, IN) – 76G in career at St. Joseph's HS; Carmel Commotion club

Top Players Lost:

Melissa Tancredi (D) – 2-time All-American; 2-time BE Defensive Player of the Year; Canadian National Team

Gudrun Gunnarsdottir (D) – 4-year regular, joining Tancredi in central defender role; Icelandic National Team