



# NOTRE DAME

## WOMEN'S BASKETBALL

**Fighting Irish Media**  
▶ Leigh Torbin  
▶ [ltorbin@nd.edu](mailto:ltorbin@nd.edu)  
▶ 407-325-5703 (c)  
▶ [UND.com/WBB](http://UND.com/WBB)

### 2016-17 SCHEDULE

#### NOVEMBER

3	Roberts Wesleyan (Exhib.)	W, 129-50
11	Central Michigan \$ [ACC Net. Extra]	W, 107-47
14	Fordham \$ [ACC Net. Extra]	W, 67-36
17	Green Bay \$ [ACC Net. Extra]	W, 71-67
20	#17 Washington \$ [CBS Sports]	W, 71-60
22	vs. UL-Lafayette ^	W, 91-51
26	TCU [ACC Net. Extra]	W, 92-59
30	at Iowa [BTN]	W, 73-58

#### DECEMBER

4	Valparaiso [ACC Net. Extra]	W, 114-54
7	#1 UConn [ESPN2]	L, 61-72
10	at #16 DePaul [CSN+]	W, 75-61
18	at Toledo [ESPN3]	W, 85-68
20	at Michigan State [BTN]	W, 79-61
27	at Chattanooga	W, 79-58
29	at NC State * [ACC Net. Extra]	L, 62-70

#### JANUARY

2	at Georgia Tech * [ACC Net. Extra]	W, 55-38
5	Wake Forest * [ACC Net. Extra]	W, 92-72
8	at #14 Miami * [ESPN2]	W, 67-55
12	Pittsburgh * [ACC Net. Extra]	W, 86-54
16	at Tennessee [ESPN2]	L, 69-71
19	at Boston College * [ACC Net. Extra]	W, 80-69
22	at North Carolina * [ESPN2]	W, 77-55
26	#14 Duke * [ACC Net. Extra]	W, 62-58
29	Virginia * [ESPN2]	W, 82-74

#### FEBRUARY

2	at Virginia Tech * [ACC Net. Extra]	W, 76-59
6	#9 Louisville * [ESPN2]	7 p.m.
12	Georgia Tech * [ACC Network]	1 p.m.
16	at Clemson * [ACC Net. Extra]	7 p.m.
19	at Syracuse * [ESPN2]	5 p.m.
23	Boston College * [ACC Net. Extra]	7 p.m.
26	Florida State * [ESPN2]	1 p.m.

#### MARCH

1	ACC First Round %	TBA
2	ACC Second Round %	TBA
3	ACC Quarterfinals %	TBA
4	ACC Semifinals %	TBA
5	ACC Final %	TBA
17/18	NCAA First Round &	TBA
19/20	NCAA Second Round &	TBA
24/25	NCAA Sweet 16 @	TBA
26/27	NCAA Elite Eight @	TBA
31	NCAA Semifinal #	TBA

#### APRIL

2	NCAA Championship Game #	TBA
---	--------------------------	-----

#### Home Games in bold

All times are subject to change and listed in ET

[denotes television coverage]

\* - denotes an Atlantic Coast Conference game

\$ - Preseason WNIT (at Notre Dame, Ind.)

^ - Campbell Center (Houston, Texas)

% - HTC Center (Conway, S.C.)

& - TBA Campus sites

@ - 2017 NCAA Regional Sites

Webster Bank Arena [Bridgeport, Conn.]

Rupp Arena [Lexington, Ky.]

Chesapeake Energy Arena [Oklahoma City, Okla.]

Stockton Arena [Stockton, Calif.]

# - 2017 NCAA Final Four

American Airlines Center [Dallas, Texas]

### GAME 25 • LOUISVILLE



## #7/8 University of Notre Dame Fighting Irish

(21-3, 9-1 ACC)



## #9/7 University of Louisville Cardinals

(20-5, 7-3 ACC)

#### GAME 25

**Matchup:** Louisville at Notre Dame

**Date:** Monday, Feb. 6

**Time:** 7:02 p.m. ET

**Site:** Notre Dame, Ind.

**Arena:** Purcell Pavilion at the Joyce Center (9,149)

**Television:** ESPN2

**Talent:** Dave O'Brien, Doris Burke

**Live Video:** WatchESPN

**Talent:** Dave O'Brien, Doris Burke

**Live Radio:** Pulse FM 96.9/92.1

**Talent:** Bob Nagle

**Live Audio:** WatchND App or WatchND.tv

**Talent:** Bob Nagle

**Live Stats:** UND.com

**Live Updates:** @NDWBB

**Series History:** Notre Dame leads 12-4

### What's Inside

Notes	1-7
University Information & Quick Facts	2
Series History vs. Louisville	2
Around the ACC	3
National Polls & Notre Dame in the Polls	4
2016-17 Honors & Awards	4
Notre Dame's Record When	5
Specialty Stats	6
Notre Dame Roster	8
Radio/TV Roster	9
Miscellaneous Statistics	10
The Last Time	11-12
Game Recaps	13-18
Superlatives	19-20
Player Bio Updates	21-31
2016-17 Season Stats	32-38

### Notre Dame Likely Starters and Reserves

No	Name	Pos	Ht	Yr*	PPG	RPG	Other	Notes
3	Marina Mabrey	G	5-11	So.	13.5	3.4	61 assts	• 14.8 ppg in ACC play leads team
11	Brianna Turner	F	6-3	Jr.	14.8	7.5	55 blks	• ACC's leading shot blocker
15	Lindsay Allen	G	5-8	Sr.	8.6	5.3	185 assts	• Leads ACC in all 3 assist subcategories
24	Arike Ogunbowale	G	5-8	So.	14.7	4.0	43 assts	• Has led ND in scoring 11 times this year
33	Kathryn Westbeld	F	6-2	Jr.	8.5	5.6	42 assts	• Battling sore ankle but still contributing

#### Off the Bench For the Fighting Irish

5	Jackie Young	G	6-0	Fr.	6.8	3.7	21 assts	• Has scored in double figures 3 of last 7
14	Mychal Johnson	G	5-7	Jr.	2.3	1.3	28 assts	• Already has season high with 28 assists
20	Ali Patberg	G	5-10	So.	1.0	1.4	9 assts	• Scored 12 of her 14 points vs. BC & UNC
21	Kristina Nelson	F	6-4	Sr.	3.9	3.3	23 assts	• Scored career-high 13 points vs. Pitt
22	Erin Boley	G	6-2	Fr.	6.2	2.5	18 assts	• Tops Irish with .913 free throw % (21-23)
35	Diamond Thompson	C	6-5	Sr.	0.8	0.4	1 asst	• Seen action in eight games this season

\* = players listed by academic class (Kristina Nelson did not play in 2014-15 and Ali Patberg did not play in 2015-16 so both have an additional season of athletic eligibility)

# 4

On Thursday night, **Arike Ogunbowale** became the fourth different Irish player to record a double-double this year, joining **Lindsay Allen, Brianna Turner** and **Kathryn Westbeld**.

# 1

**Lindsay Allen** needs just one assist to tie **Skylar Diggins** for second place on Notre Dame's career assist chart with 745. **Mary Gavin** has held the school record at 778 since 1988.

# 10

Notre Dame is looking for its 10th conference win. The Irish have claimed double-digit league wins in 20 of its 21 years in the BIG EAST and ACC combined, going 8-8 in 2005-06 league play.



NDWBB



NDWBB



NDWBB



NDWBB

### UNIVERSITY INFORMATION

School: ..... University of Notre Dame  
 Location: ..... Notre Dame, IN 46556  
 Founded: ..... 1842  
 Enrollment: ..... 8,475 (undergraduate), 12,126 (total)  
 Nickname: ..... Fighting Irish  
 Colors: ..... Gold and Blue  
 Affiliation: ..... NCAA Division I  
 Conference: ..... Atlantic Coast Conference (ACC)  
 President: ..... Rev. John I. Jenkins, C.S.C. (Notre Dame '76)  
 Provost: ..... Thomas Burish  
 NCAA Faculty Representative: ..... Patricia Bellia (Harvard '91)  
 Athletics Director: ..... Jack Swarbrick (Notre Dame '76)  
 Sr. Assoc. Athletic Director/Sport Admin.: ..... Jill Bodensteiner (Notre Dame '91)  
 Ticket Office Phone: ..... (574) 631-7356  
 Home Arena (capacity): ..... Purcell Pavilion at the Joyce Center (9,149)

### WOMEN'S BASKETBALL INFORMATION

Karen and Kevin Keyes Family Head Women's Basketball Coach:  
 Muffet McGraw (St. Joseph's (Pa.) '77)  
 Record at Notre Dame: ..... 753-226 (.769) (30th season)  
 Record Overall ..... 841-267 (.759) (35th season)  
 ACC Record/Years: ..... 56-2 (.966) (fourth season)  
 Associate Head Coach: ..... Carol Owens (Northern Illinois '90)  
 Associate Head Coach / Recruiting Coordinator: ..... Niele Ivey (Notre Dame '00)  
 Associate Coach: ..... Beth Cunningham (Notre Dame '97)  
 Director of Basketball Operations: ..... Katie Capps (Western Kentucky '02)  
 Video Coordinator: ..... Erica Williamson (Notre Dame '10)  
 Special Events Coordinator: ..... Sharla Lewis (Chicago State '99)  
 Athletic Trainer: ..... Anne Marquez (West Florida '01)  
 Strength and Conditioning: ..... Elisa Angeles (Ball State '03)  
 Academic Counselor: ..... Amanda Hall (DePauw '01)  
 Equipment Manager: ..... Kathy Speybroeck (Indiana '82)  
 Women's Basketball Office Phone: ..... (574) 631-5420

### MEDIA RELATIONS INFORMATION

Associate Director, Athletics Communications (WBB SID): ..... Leigh Torbin  
 Office Phone: ..... (574) 631-9471  
 Cell Phone: ..... (407) 325-5703  
 E-Mail: ..... ltorbin@nd.edu  
 Assistant Director, Athletics Communications (WBB Asst.): ..... Megan Golden  
 Office Phone: ..... (574) 631-2664  
 Cell Phone: ..... (440) 223-7142  
 E-Mail: ..... mgolden@nd.edu  
 Purcell Pavilion Press Row Phone: ..... (574) 631-5309  
 Mailing Address: ..... University of Notre Dame  
 113 Joyce Center  
 Notre Dame, IN 46556  
 Web Site: ..... www.und.com/NDWBB  
 Twitter: ..... @NDWBB  
 Instagram: ..... NDWBB  
 Facebook: ..... facebook.com/NDWBB  
 Snapchat ..... NDWBB

### TEAM INFORMATION

2015-16 Overall Record: ..... 33-2  
 2015-16 ACC Record/Finish: ..... 16-0 (1st)  
 2015-16 Postseason: ..... ACC Tournament Champion  
 ..... NCAA Sweet 16  
 Letter Winners Returning: ..... 9  
 Letter Winners Lost: ..... 3  
 Newcomers: ..... 2  
 2016-17 Captains: ..... Lindsay Allen, Kristina Nelson, Kathryn Westbeld  
 NCAA Appearances ..... 23 (Last: 2016)  
 NCAA Final Four Appearances ..... Seven (Last: 2015)  
 NCAA National Championships ..... One (2001)

### NOTRE DAME-LOUISVILLE HISTORY

- Notre Dame leads the all-time series, 12-4, including wins in each of the last nine meetings. Notre Dame is 4-2 against Louisville at home, winning each of the last three meetings.
- The teams have met four times in the postseason with Louisville claiming a win in the 1991 WNIT (the first-ever game between the schools) and Notre Dame taking three BIG EAST tournament contests.
- The active nine-game winning streak against the Cardinals ties for the third-longest by the Irish against any ACC foe, trailing Notre Dame's 17 straight wins over Syracuse and 12 over Duke while matching its active nine-game winning streak over Boston College.
- Last year, **Madison Cable** had a double-double with 13 points and 12 rebounds to help the Irish to a 66-61 win at Louisville. **Arike Ogunbowale** led the Irish with 15 points off the bench while **Brianna Turner** netted 13 and **Lindsay Allen** poured in 12. The Cardinals led by nine late in the second quarter but the Irish limited Louisville to just 26 second half points to rally back for the win.

### HOME COURT ADVANTAGE

- When playing at home, Notre Dame has enjoyed its typical home court advantage as provided by its incredibly loyal lime green-glad fans. In the latest NCAA update, the Irish ranked sixth nationally in average attendance (8,333) and also fifth in total (91,658) home attendance. Notre Dame was second nationally for operating at 91.08% of capacity at 9,149 seat Purcell Pavilion at the Joyce Center, narrowly behind Gonzaga's 92.14%.
- This advantage has played itself out particularly notably in conference play. Notre Dame has won a school-record 38 consecutive home conference games, beginning with a 66-47 win over Providence College on Feb. 14, 2012, in BIG EAST play.
- Notre Dame is 28-0 at Purcell Pavilion in ACC play, going 8-0 in 2013-14, 2014-15 and 2015-16 while also picking up a 4-0 mark this year following Sunday's win over Virginia.
- The Irish offense has been notably more potent at home, averaging 82.3 points per game as opposed to 72.8 on the road. However, Notre Dame's defense has not missed a beat regardless of venue posting remarkably similar numbers. The Irish have held foes to 59.3 points per game and .384 shooting at home while permitting 60.4 points per game and .397 shooting on the road.
- Notre Dame's Jan. 29 matinee vs. Virginia drew a sellout crowd of 9,149. It marked the 50th sellout in Irish history and the second this year, joining the Dec. 7 game against UConn.

### 21 WINS THROUGH 24 GAMES BECOMING ROUTINE

- The 2016-17 Irish stand at 20-3 on the year. This high rate of success is not uncommon.
- This is the sixth consecutive year where Notre Dame has started a season 21-3 or better.
- The 2010-11 team was the last one to win less than 21 of its first 24 games and that squad still stood at a solid 20-4 at this mid-season juncture.
- This season marks the 11th year in a row and the 23rd time in the past 24 years in which Notre Dame has won at least 20 games.

## Series History

### Notre Dame Leads 12-4

Home: 4-2, Away: 5-1 Neutral: 3-1

Date	Site	Result	Score
3/22/91	Amarillo, Texas	L	75-80
1/15/92	Notre Dame, Ind.	L	53-64
2/21/94	Louisville, Ky.	W	69-54
1/14/06	Louisville, Ky.	L	51-61
2/7/07	Notre Dame, Ind.	W	64-55
1/8/08	Louisville, Ky.	W	82-74
2/11/09	Notre Dame, Ind.	L	66-71
1/19/10	Louisville, Ky.	W	78-60
3/6/10	Hartford, Conn.	W	89-52
1/12/11	Notre Dame, Ind.	W	80-60
3/6/11	Hartford, Conn.	W	63-53
2/20/12	Louisville, Ky.	W	68-52
2/11/13	Notre Dame, Ind.	W	93-64
3/11/13	Hartford, Conn.	W	83-59
2/23/15	Notre Dame, Ind.	W	68-52
2/7/16	Louisville, Ky.	W	66-61

Series Scoring	Total	Average
Notre Dame	1,148	71.8
Louisville	972	60.8

**Current Win Streak:** Notre Dame - 9  
**Muffet McGraw vs. Louisville:** 11-4  
**Jeff Walz vs. Notre Dame:** 1-9  
**McGraw vs. Walz:** 9-1  
**ND Biggest Win:** 37 (89-52 on 3/6/10)  
**Uofl. Biggest Win:** 11 (64-53 on 1/15/92)  
**ND Longest Win Streak:** 9 (2010-present)  
**Uofl. Longest Win Streak:** 2 (1991-92)

### THE TALE OF THE TAPE

	ND	Uofl.
Overall/conference record	21-3/9-1	20-5/7-3
AP/WBCA-USA Today poll	7/8	7/9

#### SCORING

Points scored per game	78.0	75.6
Points allowed per game	59.5	59.6
Field goal percentage	.489	.435
Three-point percentage	.399	.338
Free throw percentage	.699	.683

#### REBOUNDING

Rebounds per game	40.0	42.0
Opponent rebs. per game	31.7	35.6
Rebounding margin	+8.3	+6.5

#### OTHER

Assists per game	19.1	17.2
Turnovers per game	14.3	13.8
Assist/turnover ratio	1.3	1.2
Steals per game	9.8	8.8
Blocked shots per game	4.5	3.8

**CONSISTENT WINNERS**

• Notre Dame has been one of the best teams in the nation on an annual basis in recent vintage. Over the past six seasons (2011-12 through Friday night), only UConn (205) has won more games than Notre Dame's 197. Baylor has also claimed 197. Stanford (174) and Maryland (173) round out the top five.

**IRISH AMONG TOP SHOOTING TEAMS**

• *NCAA leaders below are from the Sunday, Feb. 4 update.*

• Notre Dame has proved to be one of the best shooting teams in the nation this season. The Irish stand fourth in field goal percentage at 48.9 and fourth in 3-point field goal percentage at 39.9. It has added up to a team ranked 17th in scoring offense at 78.0 points per game. Notre Dame and UConn are the only teams in the top five for both field goal and 3-point field goal percentage.

• The Irish are vying to be the second team to ever lead the ACC in field goal percentage four years in a row, joining Duke's eight-year run from 1999-2006.

• Other team categories where the Irish collectively excel and rank in the top 25 include assists (5th with 459), assists per game (6th at 19.1), assist to turnover ratio (10th at 1.34), scoring margin (12th at +18.6), rebounding margin (18th at +8.3) and rebounds (23rd at 960). The Irish since the Virginia Tech game dipped to 27th in steals with 235.

• Two-time Nancy Lieberman Award finalist **Lindsay Allen** has made a quick claim to her status as the country's top point guard, not only in how she keeps the Irish under control, but also for her passing ability. Allen is second nationally with 185 assists and fifth with 7.7 assists per game. Allen is currently third with an assist-to-turnover ratio of 3.49 and led the nation in this field entering the Dec. 20 game at Michigan State. She leads the ACC in all three categories as well.

• Allen's 744 career assists rank first among active players just ahead of Northwestern's Ashley Deary who has 738.

• Allen is also 48th nationally in steals (55) and 47th in minutes played (809).

• **Brianna Turner** has shot the ball well this year and stands 18th nationally with her field goal percentage of 59.2%. Her recent surge has also left her 19th nationally in blocked shots with 55. Turner and West Virginia's Lanay Montgomery are the only players in the nation to rank in the top 20 for both field goal percentage and blocked shots.

• The Irish top the ACC as a team in assists, assists per game, assist-to- turnover ratio, field goal percentage and 3-point field goal percentage.

• Individually, Lindsay Allen leads the elite league in assists, assists per game and assist-to-turnover ratio. Additionally, she ranks in the top five nationally in all three categories. Brianna Turner is the ACC leader in blocked shots, blocked shots per game and field goal percentage.

**RICO MAKES HOKIES SAY "UNCLE"**

• In the 41st double-figure scoring game of her career, Feb. 2 at Virginia Tech, **Arike Ogunbowale** paired it up for her first career double-double. The sophomore paired up her 16 points with a career-high 10 rebounds, plus a career-high six assists, to lead Notre Dame past Virginia Tech, 76-59.

• Ogunbowale hit her stride just after halftime and helped Notre Dame maintain its advantage. The Irish came out of the break on an 11-2 run over the first 3:06 of the penul-

time quarter, quickly extending a 34-29 halftime lead to 14 points at 45-31. Ogunbowale scored seven points in this spurt while grabbing three rebounds and adding an assist.

• The Virginia Tech game was also her team-leading 11th time this year leading the team in scoring.

**ALLEN COLLECTS HISTORIC DOUBLE-DOUBLE**

• The Notre Dame career of **Lindsay Allen** has been unconventional in that she started the opening game of her freshman year and has yet to miss one, starting all 136 contests of her time at Notre Dame to date.

• In the first 134 starts, Allen had recorded a triple-double (Dec. 27 at Chattanooga) but she had yet to record a true double-double until Jan. 29 when she had a career-high-tying 11 rebounds plus 10 assists against Virginia.

• Naturally, Allen's first double-double would prove unconventional. It is believed to be the first in Notre Dame history that has not included points as one of the double digit categories.

**CONSECUTIVE BIG GAMES FROM ALLEN & TURNER**

• **Lindsay Allen** and **Brianna Turner** both produced noteworthy performances in consecutive games against North Carolina (Jan. 22) and Duke (Jan. 26).

• Allen assisted on 11 baskets in Chapel Hill and 12 more at home against Duke. It marked the first time a Notre Dame player had hit double figures in assists in consecutive games in exactly 12 years. Megan Duffy had 11 assists against Rutgers on Jan. 23, 2005, and 10 more against St. John's on Jan. 26, 2005.

• Allen followed it up with a 10-assist game against Virginia on Jan. 29. This matched the school record of three consecutive games with 10-plus assists, a feat only previously done by **Mary Gavin**. Gavin had triplet 10-assist games four times, most recently from Feb. 11-17, 1988, against Detroit (12), Dayton (11) and Cleveland State (10).

• Turner collected a double-double in both of those contests with 24 points and 12 rebounds at North Carolina followed up by 25 points and 12 rebounds against Duke. Curiously, Turner's six double-doubles this season have come in a trio of couplets. Turner picked up her other four 2016-17 double-doubles on Nov. 20 and 22 against Washington and UL-Lafayette, and on Dec. 7 and 10 against UConn and DePaul.

• Also of note, four of Turner's six double-doubles have come against ranked teams in No. 17 Washington (since moved up to 7), No. 1 UConn, No. 16 DePaul and No. 14 Duke. Turner also grabbed 10 rebounds in the win at No. 14 Miami but only scored seven points against the Hurricanes.

• Turner came tantalizingly close to a third-straight double-double on Jan. 29 when she had nine points and eight rebounds after being limited to just six first half minutes played due to foul trouble.

**NOT FOULING FAIRLY WELL**

• While playing solid defense this year, Notre Dame has done it in a smart manner. The Irish are just narrowly second the ACC with just 15.8 fouls per game called against them. The Irish are a fraction of a foul per game behind Virginia Tech's 15.7 fouls per game.

• Notre Dame has only had three players foul out this season, **Kristina Nelson** at Chattanooga and vs. Louisiana-Lafayette, and **Brianna Turner** at NC State. All three games came away from Purcell Pavilion.

**Around the ACC (Feb. 4)**

**ACC Standings**

Team	Conf.	Overall
<b>NOTRE DAME (7/8)</b>	<b>9-1</b>	<b>21-3</b>
Florida State (6/5)	9-1	21-2
Louisville (9/7)	7-3	20-5
Duke (15/15)	7-3	19-4
NC State (19/19)	7-3	17-6
Syracuse (24/21)	7-3	16-7
Miami (16/16)	6-4	17-5
Virginia	4-5	15-7
Wake Forest	4-5	13-9
Pittsburgh	3-6	12-10
Virginia Tech	3-6	16-6
Georgia Tech	2-7	13-9
North Carolina	2-7	13-9
Boston College	1-9	8-15
Clemson	1-9	12-11

**ACC Preseason Predictions**

**2016-17 Predicted Order of Finish (First Place Votes)**

	Blue Ribbon Panel	Coaches
1.	<b>Notre Dame (44)</b>	<b>Notre Dame (13)</b>
2.	Louisville (8)	Louisville (1)
3.	Florida State (2)	Florida State (1)
4.	Syracuse	Syracuse
5.	Miami	Miami
6.	Duke	Duke
7.	NC State	NC State
8.	North Carolina	Georgia Tech
9.	Georgia Tech	North Carolina
10.	Virginia	Virginia
11.	Wake Forest	Wake Forest
12.	Virginia Tech	Virginia Tech
13.	Pittsburgh	Boston College
14.	Boston College	Pittsburgh
15.	Clemson	Clemson

**Blue Ribbon & Coaches Preseason Player of the Year**  
Myisha Hines-Allen, Jr., F, Louisville

**2016-17 Blue Ribbon Panel Preseason All-ACC Team**  
Rebecca Greenwell, R-Jr., G, Duke  
Leticia Romero, Sr., G, Florida State  
Shakayla Thomas, Jr., G, Florida State  
Asia Durr, So., G, Louisville  
Myisha Hines-Allen, Jr., F, Louisville  
Mariya Moore, Jr., F, Louisville  
Adrienne Motley, Sr., G, Miami  
**Lindsay Allen, Sr., G, Notre Dame**  
**Brianna Turner Jr., F, Notre Dame**  
Alexis Peterson, Sr., G, Syracuse

**2016-17 Coaches Preseason All-ACC Team**  
Rebecca Greenwell, R-Jr., G, Duke  
Leticia Romero, Sr., G, Florida State  
Shakayla Thomas, Jr., G, Florida State  
Myisha Hines-Allen, Jr., F, Louisville  
Mariya Moore, Jr., F, Louisville  
Asia Durr, So., G, Louisville  
Adrienne Motley, Sr., G, Miami  
**Brianna Turner, Jr., F, Notre Dame**  
**Lindsay Allen, Sr., G, Notre Dame**  
Alexis Peterson, Sr., G, Syracuse

**2016-17 Blue Ribbon Panel Newcomer Watch List**  
Lexie Brown, Jr., G, Duke  
Leaonna Odom, Fr, F, Duke  
Chatrice White, Jr., C, Florida State  
**Erin Boley, Fr., F, Notre Dame**  
**Jackie Young, Fr., G, Notre Dame**

**2016-17 Coaches Newcomer Watch List**  
Lexie Brown, Jr., G, Duke  
Leaonna Odom, Fr, F, Duke  
Chatrice White, Jr., C, Florida State  
**Erin Boley, Fr., F, Notre Dame**  
**Jackie Young, Fr., G, Notre Dame**

**Associated Press Poll  
(Jan. 30)**

Rk.	Team (1st-place votes)	Record	Points	Lst Wk.
1	• Connecticut (33)	20-0	825	1
2	Baylor	21-1	789	2
3	Maryland	21-1	748	3
4	South Carolina	18-1	737	5
5	Mississippi State	21-1	689	4
6	• Florida State	20-2	663	6
<b>7</b>	<b>Notre Dame</b>	<b>20-3</b>	<b>591</b>	<b>8</b>
8	Stanford	19-3	580	10
9	• Louisville	20-4	543	9
10	• Washington	20-3	522	7
11	Oregon State	20-2	520	11
12	Texas	16-4	467	12
13	UCLA	17-4	442	13
14	Ohio State	19-5	399	15
15	• Duke	18-4	384	14
16	• Miami (Fla.)	16-5	320	17
17	• DePaul	18-5	235	21
18	Oklahoma	16-6	199	20
19	• NC State	16-6	177	18
20	South Florida	17-3	168	23
21	• Green Bay	19-2	164	24
22	West Virginia	16-6	114	22
23	Arizona State	14-7	113	16
24	• Syracuse	15-7	109	NR
25	Kentucky	15-6	74	NR

**Others receiving votes:** Kansas State 49, Michigan 32, • Tennessee 25, • Virginia Tech 21, Drake 6, Harvard 6, Temple 3, Northwestern 3, Texas A&M 3, Creighton 2, Oregon 2, Northern Colorado 1

**USA Today Coaches Poll  
(Jan. 31)**

Rk.	Team (1st-place votes)	Points	Rec.	Lst. Wk.
1	• Connecticut (32)	800	20-0	1
2	Baylor	764	21-1	2
3	Maryland	735	21-1	3
4	Mississippi State	694	21-1	5
5	• Florida State	655	20-2	6
6	South Carolina	637	18-2	4
7	• Louisville	573	20-4	8
<b>8</b>	<b>Notre Dame</b>	<b>563</b>	<b>20-3</b>	<b>9</b>
9	• Stanford	546	19-3	10
10	• Washington	525	20-3	7
11	Oregon State	494	20-2	11
12	UCLA	461	17-4	12
13	Texas	418	16-4	13
14	Ohio State	391	19-5	14
15	• Duke	339	18-4	15
16	• Miami (Fla.)	311	16-5	17
17	• DePaul	268	18-5	19
18	Arizona State	163	14-7	16
19	• NC State	161	16-6	18
20	South Florida	159	17-3	23
21	• Syracuse	155	15-7	24
22	Oklahoma	150	16-6	20
23	West Virginia	119	16-6	22
24	• Green Bay	102	19-2	25
25	• Tennessee	72	14-7	NR

**Others Receiving Votes:** Michigan 62; • Virginia Tech 40; Northwestern 12; Temple 9; Harvard 5; Oklahoma State 5; California 3; Creighton 2; Kentucky 2; Arkansas-Little Rock 1; Kansas State 1; Texas A&M 1; Tulane 1; • Wake Forest 1.

**Notre Dame in the Polls**

Date	AP	Coaches
Preseason	1	2
November 14	1	1
November 21	1	1
November 28	1	1
December 5	2	1
December 12	2	2
December 19	2	2
December 26	2	2
January 2	7	6
January 9	6	6
January 16	6	9
January 23	8	9
January 30	7	8

• Only Duke (1) has fewer foul-outs in the ACC this year while the three disqualifications by the Irish tie for the 30th-fewest nationally.

**McGraw Wins 750th Game at Notre Dame**

• The Women's Basketball Hall of Fame career of **Muffet McGraw** reached yet another milestone as she claimed her 750th win at Notre Dame on Jan. 22 at North Carolina. • She is one of just four women (and seven overall) to win at least 750 women's basketball games at a single Division I school, joining Pat Summitt (Tennessee), Tara VanDerveer (Stanford) and Jody Conradt (Texas). • McGraw's 841 career wins overall including her five years at Lehigh are the sixth-most all-time by a female Division I women's basketball coach (10th overall). • All of the other women on these two charts are also enshrined in the Naismith Memorial Basketball Hall of Fame, an honor for which McGraw was a finalist in 2016.

**Winningest Div. I Female Coaches**

No.	Name	Years	Record	Pct.
1.	Pat Summitt	1975-12	1098-208	.841
2.	Tara VanDerveer	1979-	1000-228	.814
3.	Sylvia Hatchell	1976-	988-367	.729
4.	C. Vivian Stringer	1972-	977-383	.718
5.	Jody Conradt	1970-07	900-309	.744
<b>6.</b>	<b>Muffet McGraw</b>	<b>1982-</b>	<b>841-267</b>	<b>.759</b>

**Most Wins at One School By Women**

No.	Name	Years	School	Wins
1.	Pat Summitt	1975-12	Tennessee	1098
2.	Tara VanDerveer	1985-95, 96-	Stanford	848
3.	Jody Conradt	1976-07	Texas	783
<b>4.</b>	<b>Muffet McGraw</b>	<b>1987-</b>	<b>Notre Dame</b>	<b>753</b>

**IRISH ENJOYING COMFORTS OF HOME**

• The Irish are in the midst of a stretch with four of five games at home (wrapped around last Thursday's game at Virginia Tech) and six out of nine to close out the regular season - a welcome departure from the seven weeks prior. • The North Carolina game (Jan. 22) was the last game in a stretch where the Irish played 10 out of 12 games on an opponent's home floor. It also marked the third of three road games in seven days for Notre Dame, joining contests at Tennessee (Jan. 16) and Boston College (Jan. 19). The Irish were on an airplane six out of eight days from Jan. 15-22) jetting home for classes between the games. • The home games on Jan. 26 and 29 against Duke and Virginia marked the first time the Irish played simply two consecutive games at home since Dec. 4 & 7 games against Valparaiso and UConn. The Duke game (Jan. 26) marked exactly 50 days since the UConn game. • This stretch began on Dec. 10 when the Irish embarked on the longest true road game string in school history, a six-game romp to DePaul (Dec. 10), Toledo (Dec. 18), Michigan State (Dec. 20), Chattanooga (Dec. 27), NC State (Dec. 29) and Georgia Tech (Jan. 2). • Thankfully, Notre Dame has generally not been fazed when playing on the road. The Irish have compiled a 57-4 (.934) record on the road over the past five seasons. The loss at NC State (Dec. 29) snapped a 15-game road winning streak which is tied for the 12th-longest in NCAA history. • Oddly, Notre Dame had to wait significantly to pass its first true road test. The Irish were one of the final 27 teams nationally to play a true road game in 2016-17, not breaking out their blue uniforms until a Nov. 30 contest at Iowa in the ACC/Big Ten Challenge.

**2016-17 Honors**

**Lindsay Allen, Sr., G**

- ▶ Wooden Award Midseason Top 25
- ▶ Preseason WNIT All-Tournament Team
- ▶ Naismith Trophy Watch List
- ▶ Wade Award Watch List
- ▶ Wooden Award Preseason Top 30
- ▶ Nancy Lieberman Award Watch List
- ▶ Senior CLASS Award Candidate
- ▶ Preseason espnW #10 player in the nation
- ▶ Preseason All-ACC (Blue Ribbon & Coaches)

**Erin Boley, Fr., F**

- ▶ ACC Newcomer Watch List (Blue Ribbon & Coaches)

**Arike Ogunbowale, So., G**

- ▶ espnW National Player of the Week (Nov. 21)
- ▶ Preseason WNIT Tournament MVP
- ▶ Preseason WNIT All-Tournament Team
- ▶ ACC Player of the Week (Nov. 14)
- ▶ Naismith Trophy Watch List

**Brianna Turner, Jr., F**

- ▶ Wooden Award Midseason Top 25
- ▶ Ann Meyers Drysdale Award Midseason Watch List
- ▶ ACC Player of the Week (Dec. 12)
- ▶ Preseason AP All-American
- ▶ Naismith Trophy Watch List
- ▶ Wade Award Watch List
- ▶ Wooden Award Preseason Top 30
- ▶ Preseason espnW #2 player in the nation
- ▶ Preseason All-ACC (Blue Ribbon & Coaches)

**Jackie Young, Fr., G**

- ▶ ACC Freshman of the Week (Dec. 5)
- ▶ ACC Newcomer Watch List (Blue Ribbon & Coaches)

**Muffet McGraw**

- ▶ Naismith Basketball Hall of Fame Nominee
- ▶ Wooden Legends of Coaching Award

**FAST STARTS KEY**

• Notre Dame has been at its best this year when getting off to a fast start to games. Out of the four quarters of a game, Notre Dame has scored the most points (509), allowed the second-fewest points (345) and has the widest scoring margin (+164) in the first quarter of any single stanza. • In 24 games this year, Notre Dame has only trailed thrice after 10 minutes of play. Not completely by coincidence, those three games (UConn, NC State and Duke) include two of the team's three losses. • The Irish have held a lead after the first quarter in 20 of their 24 games while standing tied with TCU, 22-22, after the first quarter of an eventual Notre Dame win on Nov. 26. • This trend extends back to last season when the NCAA switched from halves to quarters. The 2015-16 Irish scored 719 first quarter points - the most of any 10-minute segment. Last year's team saw its lowest quarterly defensive output and scoring margin totals still come in the first half of games, but in the second quarter.

**GETTING A LEAD AND KEEPING IT**

- Tennessee accomplished a rare feat in rallying back from a 44-31 halftime deficit to upset Notre Dame on Monday night at Thompson-Boling Arena. The game snapped a streak of 157 consecutive wins for the Irish when leading at halftime.
- The last time the Irish had previously led a game after 20 minutes but did not win the contest came on Feb. 12, 2012, when Notre Dame led West Virginia 33-30 at intermission but would go on to lose to the Mountaineers, 65-63.
- This trend is not a new one for the Irish. Notre Dame is 397-20 (.952) since 2000-01 when leading at the half, including a 20-1 mark this season.

**CONSISTENT ACC SUCCESS FOR IRISH**

- Since joining the ACC for the 2013-14 season, Notre Dame has been the league's top program, compiling a 56-2 regular season record and winning three consecutive regular season and tournament championship doubles. The Irish are 65-2 in ACC competition, including league tournaments.
- The first loss came at Miami on Jan. 8, 2015, and the Irish won all 29 regular season games and 35 games in a row vs. ACC teams including conference tournament play until the Dec. 29 loss at NC State.
- The 35-game ACC streak including tournament games is the 15th-longest in NCAA history and the second-longest in ACC history behind a 51-game run by Duke from 2001-04.
- The 29-game ACC regular season winning streak is the 24th-longest such streak in NCAA history and the second-longest in ACC history behind just a 42-game run by Duke from 2001-04.
- The Irish maintain an active streak of 28 consecutive home wins in ACC play, part of an overall streak of 38 consecutive home league wins including the final years of Notre Dame's BIG EAST membership.

**Longest Conf. Win Streaks (Inc. Tourn.)**

No.	Name	Conf.	Years	Wins
1.	Texas	Southwest	1981-90	143
...				
11.	Duke	ACC	2001-04	51*
12.	Coppin State	MEAC	2005-07	49
13.	Maine	America East	1995-98	41
14.	Vermont	NAC/America East	1991-94	36
15.	<b>Notre Dame</b>	<b>ACC</b>	<b>2015-16</b>	<b>35</b>

\*ACC Record

**McGRAW NOMINATED FOR HALL OF FAME**

- Already enshrined in the Women's Basketball Hall of Fame, **Muffet McGraw** took a step towards the sport's ultimate lifetime honor on Dec. 21 as she was included on the list of nominees for the Naismith Memorial Basketball Hall of Fame's Class of 2017.
- A finalist for enshrinement in 2016, McGraw joins a star-studded field which will be pared to a list of finalists to be announced on Feb. 18 at the NBA All-Star Game in New Orleans and then ultimately to the list of enshrinees, to be announced on April 3 at the men's Final Four in Arizona.
- McGraw, who guided the Irish to the 2001 national championship and seven Final Four appearances, is the winningest single-sport coach in Irish lore with 752 wins. Over her 30-year coaching career, McGraw is 841-267 (.759), making her the sixth-winningest active coach nationally and the 10th-winningest all-time at the Division I level.

- She is the 2017 recipient of the Wooden Awards' Legends of Coaching Award, becoming just the third female to receive this honor, joining Tennessee's Pat Summitt and Stanford's Tara VanDerveer. She is the fourth women's coach to be recognized with this honor, joining Summitt, VanDerveer and UConn's Geno Auriemma.
- Among her many accomplishments, McGraw is one of five coaches (men's or women's) in Division I history with 800 wins, seven Final Fours and five NCAA title game appearances, joining the elite company of Summitt, Auriemma, Duke men's coach Mike Krzyzewski and the late North Carolina men's coach Dean Smith, all of whom are enshrined in the Naismith Memorial Basketball Hall of Fame.
- She is also the only coach to be named the consensus national coach of the year three times, sweeping the Associated Press, Women's Basketball Coaches Association, Naismith Award and United States Basketball Writers Association honors in 2001, 2013 and 2014.

**McGRAW RADIO SHOW RETURNS FEB. 13**

- For the first time, **Muffet McGraw** has her own local radio show as the Muffet McGraw Show Presented by TireRack.com debuted Jan. 9 at O'Rourke's Public House, conveniently located in Eddy Street Commons, across the street from Notre Dame's campus.
- The hour-long show, which begins at 6 p.m., is hosted by **Bob Nagle**, now in his 12th year as the radio voice of the Irish women's basketball team. It is broadcast live locally on 92.1 Pulse FM and also available over the internet at WatchND.tv. The shows are archived as Notre Dame Athletics Podcasts which are presented by Nissan.
- Each episode will also feature interviews with a current student-athlete, a member of the Irish coaching staff and also a feature on a select former player. Fans will have an opportunity to ask questions of coach McGraw and her guests along with winning prizes.
- Five shows, all on Monday nights, are planned for the 2016-17 season with the dates being Jan. 9, Jan. 23, Feb. 13, Feb. 20 and Feb. 27.

**IRISH ROUTINELY PLAY THE BEST**

- Notre Dame ranks tied for third in nation in the NCAA's strength of schedule measure as its opposition has combined for a .682 winning percentage. That mark is outdistanced only by UConn's .711 and Tennessee's .696 while tying Washington State.
- This trend is continuing with the rigors of ACC play. Measuring both past and future opponents, Notre Dame's .695 opponents' winning percentage is the second-best nationally, ahead of second place UConn's .712.
- Prior to the Dec. 27 game at four-time defending Southern Conference champion Chattanooga, every team Notre Dame had faced this year entered the game with both a winning record and no more than three losses, including seven undefeated teams.
- As a curious function of opening the season with the 16-team bracketed Preseason WNIT, along with winning each contest itself, each of Notre Dame's first six games this year saw a matchup of undefeated teams.
- UConn was the seventh undefeated team the Irish faced in the first nine games this season - all of which saw Notre Dame come into the contest undefeated as well.

**Notre Dame's Record When...**

**Day of the Week**

Sunday	6-0
Monday	2-1
Tuesday	3-0
Wednesday	1-1
Thursday	6-1
Friday	1-0
Saturday	2-0

**Time of Game**

Day games (before 6 p.m. local time)	7-0
Night games (6 p.m. or later local time)	14-3

**Location**

Home games	10-1
Road games	10-2
Neutral site games	1-0

**Halftime score**

Leading at the half	20-1
Tied at the half	1-1
Trailing at the half	0-1

**Individual scoring**

Two or fewer double-figure scorers	3-2
Three double-figure scorers	3-0
Four double-figure scorers	12-1
Five or more double-figure scorers	3-0

**Rebounding margin**

Grab more rebounds than opponents	17-0
Grab same number of rebounds	1-1
Grab fewer rebounds than opponents	3-2

**Field goal shooting**

Higher pct. than opponent	19-1
Same pct. as opponent	0-0
Lower pct. than opponent	2-2
Shoot 45% or better	14-1
Shoot less than 45%	8-2
Hold opponent under 40%	14-0

**Free throw margin**

Make more free throws	16-0
Make same number of free throws	2-0
Make fewer free throws	3-3

**Turnovers**

Commit fewer turnovers	15-1
Commit same number of turnovers	0-0
Commit more turnovers	6-2

**Uniform Combinations**

In white jerseys with blue trim	11-0
In white jerseys with green trim	0-1
In blue jerseys	10-1
In green jerseys	0-1

**Miscellaneous**

Vs. Top 25 (AP or WBCA/USA Today polls)	4-1
When ranked higher	21-2
When ranked lower	0-1
On commercial television	5-2
In overtime games	0-0

**Margin of Victory**

1-5 points	2-1
6-10 points	1-1
11-15 points	5-1
16-20 points	5-0
21+ points	8-0

**Month**

November	7-0
December	5-2
January	8-1
February	1-0
March	0-0
April	0-0

## Irish Specialty Stats

Date	Opp.	Paint	OffTO	2ndCh	FBreak	Bench
11/11	CMU	46/16	31/10	11/7	8/2	39/17
11/14	Fordham	42/16	17/11	11/2	4/0	18/9
11/17	Green Bay	28/24	18/5	12/5	6/2	8/22
11/20	Wash.	32/22	19/5	10/9	6/0	13/18
11/22	v. ULL	58/19	24/16	22/4	10/0	27/7
11/26	TCU	36/26	16/11	23/3	4/2	24/10
11/30	@Iowa	42/26	21/12	9/11	10/4	16/12
12/4	Valpo	70/16	50/14	13/4	28/6	49/24
12/7	UConn	30/42	16/20	14/15	6/10	15/4
12/10	@DePaul	40/24	13/23	12/6	5/8	19/8
12/18	@Toledo	44/28	26/21	7/9	8/0	16/29
12/20	@MSU	48/26	8/9	15/7	8/13	17/19
12/27	@UTC	54/22	16/20	18/12	6/0	18/12
12/29	@NCSU	30/24	16/17	11/11	7/11	7/12
1/2	@GT	32/18	14/10	5/11	8/0	12/19
1/5	WF	48/16	29/14	9/9	10/2	21/9
1/8	@Miami	34/28	23/16	14/12	11/4	13/20
1/12	Pitt	34/10	22/12	15/2	2/0	39/23
1/16	@Tenn.	36/32	7/11	10/14	10/4	15/8
1/19	@BC	30/36	23/11	7/4	9/0	12/16
1/22	@UNC	46/20	21/11	11/4	19/15	24/6
1/26	Duke	36/26	13/21	15/8	0/2	11/9
1/29	UVa	30/16	15/18	3/11	10/0	14/9
2/2	@VT	42/20	15/12	9/7	6/4	19/9

\* Notre Dame is listed first in each column

### Season Totals

Points in the Paint	Total	Average
Notre Dame	968	40.3
Opponents	553	23.0

Points Off Turnovers	Total	Average
Notre Dame	483	20.1
Opponents	330	13.8

Second Chance Points	Total	Average
Notre Dame	284	11.8
Opponents	187	7.8

Fast Break Points	Total	Average
Notre Dame	201	8.4
Opponents	89	3.7

Bench Scoring	Total	Average
Notre Dame	466	19.4
Opponents	313	13.0

• Notre Dame opened 2016-17 by facing six similarly undefeated schools in Central Michigan (0-0), Fordham (1-0), Green Bay (2-0), Washington (3-0), Louisiana-Lafayette (1-0) and TCU (4-0), defeating each of them.

• The Nov. 30 game at then-5-2 Iowa in the ACC/Big Ten Challenge was the first for the Irish this season against a team which had previously lost a game.

### 11 WOULD BE HEAVEN

• The Dec. 20 game at Michigan State and the Dec. 27 game at Chattanooga have been the only two this season in which Notre Dame's entire roster was available to play - and all 11 did in each contest.

• The most recent player to miss time for injury and/or illness is **Mychal Johnson** who hurt her shoulder in practice on Jan. 25 and will be out for a few weeks.

• Johnson's loss overlapped with the return of **Kathryn Westbeld** who hurt her ankle in practice on Jan. 18 and missed the Boston College (Jan. 19) and North Carolina (Jan. 22) before returning to the lineup against Duke (Jan. 26).

• Additionally, **Jackie Young** has missed five games due to knee and ankle injuries while being limited in several other midseason contests as she recovered from the ankle injury. Fellow former Indiana Miss Basketball **Ali Patberg** missed 10 games with a virus and also saw limited action in a few midseason games as she continued to regain her strength.

• Senior **Diamond Thompson** has missed seven games this year due to a combination of injury and illness.

### BASKETBALL U?

• Notre Dame is one of eight schools whose men's and women's basketball teams are both ranked in the AP top 20 as of Jan. 30, joining Baylor, Duke, Florida State, Louisville, Maryland, South Carolina and UCLA.

• Notre Dame was the last school in the nation whose women's and men's basketball programs were both undefeated.

• Curiously, both teams were finally handed their first losses by the top-ranked school and defending national champion from their respective genders.

• The Irish women's team stood at 8-0 before falling to No. 1 UConn on Dec. 7. Notre Dame's men's team was 9-0 before losing to No. 1 Villanova on Dec. 10 in Newark, New Jersey.

• The dual dominance was best displayed on Dec. 4 as the teams combined to sweep a home doubleheader by a 114-point margin. Notre Dame's women's team began the twin-bill with a 114-54 win over Valparaiso while the Irish men provided a 107-53 victory over North Carolina A&T in the nightcap.

### CALL ME MABREY

• Ten games into the ACC season, Notre Dame's leading scorer in the elite league is **Marina Mabrey**. The sophomore wing is averaging at 14.7 points per game.

• Mabrey's league slate started with a 22-point showing in Notre Dame's upset loss at NC State on Dec. 29 with 11 of those points coming in a fourth quarter when the Irish valiantly attempted to dig out of a deep deficit.

• The sophomore also broke the 20-point plateau in the Jan. 19 win at Boston College where she tallied 15 points in the third quarter alone en route to a 21-point night.

• She led Notre Dame with 26 points in the Jan. 29 win over Virginia, one shy of her career-high of 27 on Nov. 22 against

Louisiana-Lafayette. It is, however, a career high for games played in just one arena as the contest with the Ragin Cajuns was split between two different Houston venues due to a power outage.

• Hitting double figures in seven of the last nine games, Mabrey also played well in the non-conference matchup at Tennessee (Jan. 16) where she led the Irish with 17 points. In fact, Mabrey has been Notre Dame's leading scorer in two of its three losses this year, topping the Irish in defeated at NC State (22 points) and Tennessee (17 points).

### ALLEN ASSIST CHART WATCH

• **Lindsay Allen**'s name appears countless places in Notre Dame's record book and she moved up one rung on a major career-leaders chart on Jan. 29 when her 10 assists against Virginia vaulted her past **Niele Ivey** and into third place. She now boasts 744.

• Allen has reached this total at a clip of 5.4 assists per game - third in Irish lore behind just **Mary Gavin** (7.0) and Ivey (5.5).

• Allen not only is leaving an impact on the Notre Dame records, but, as a part of the first class of four-year ACC Irish players, she is also historically doing it in conference history. Allen stands third in ACC history for the most career assists.

### ND Career Assist Leaders

No.	Name	Years	Assists
1.	Mary Gavin	1984-88	778
2.	Skyler Diggins	2009-13	745
3.	<b>Lindsay Allen</b>	<b>2013-</b>	<b>744</b>
4.	Niele Ivey	1996-01	727
5.	Mollie Peirick	1994-97	651

### ACC Career Assist Leaders

No.	Name, School	Years	Assists
1.	Sharnee Zoll, Virginia	2004-08	785
2.	Kristi Toliver, Maryland	2005-09	751
3.	<b>Lindsay Allen, ND</b>	<b>2013-</b>	<b>744</b>
4.	Dawn Staley, Virginia	1989-92	729
5.	Nikki Teasley, UNC	1998-00, 02	728

### TURNER SWATS AWAY 200TH SHOT

• As a part of a six-block night at Chattanooga on Dec. 27, junior **Brianna Turner** recorded her 200th career blocked shot when she rejected Jasmine Joyner's shot with 8:19 left in the third quarter for her fourth block of the game.

• Turner is the third Irish player with 200 career blocks, joining **Ruth Riley** (370) and **Devereaux Peters** (227).

• Turner ranks tied for ninth among all active players nationally with her 232 career blocks and third among juniors.

• Additionally, Turner's 232 blocks rank 12th in ACC history, equaling the moving target of Syracuse's Briana Day who currently has 231 in her on-going Orange career. The next fixed benchmark is the 11th-place post held by Dolores Bootz for Georgia Tech with 245 from 1985-88.

• Turner has found her shot-blocking form of late. After swatting away just 14 shots over Notre Dame's first 11 games, she has recorded 41 blocks in the past 13 games, an average of 3.2 per game and more in line with her career average of 2.6 blocked shots per game.

### ND Career Blocked Shot Leaders

No.	Name	Years	Blocks
1.	Ruth Riley	1997-01	370
2.	<b>Brianna Turner</b>	<b>2014-</b>	<b>232</b>
3.	Devereaux Peters	2007-12	227

**TURNER CAN'T MISS**

- Junior **Brianna Turner** is seldom shy about shooting the ball, taking 845 shots to date in her 88-game Irish career (9.5 shots per game). Where she has been historically great though is her conversion rate on her shots.
- Turner has connected on 519 of her 845 career field goal attempts for a .614 percentage. This success rate stands second in Irish lore (trailing just **Ruth Riley's** .632) and fourth in ACC history.
- Turner is the only player to rank among top 10 in the nation in field goal percentage each of the past two seasons. She led the nation as a freshman at .652 and ranked fifth her sophomore year at .593.

**ND Career Field Goal Pct. Leaders**

No.	Name	Years	Points
1.	Ruth Riley	1997-01	.632
2.	<b>Brianna Turner</b>	<b>2014-</b>	<b>.614</b>
3.	Katryna Gaither	1993-97	.610

**ACC Career Field Goal Pct. Leaders**

No.	Name, School	Years	FG%
1.	Carolyn Swords, BC	2007-11	.676
2.	Crystal Langhorne, Maryland	2004-08	.652
3.	Tylish Hall, Duke	1994-97	.630
4.	<b>Brianna Turner, ND</b>	<b>2014-</b>	<b>.614</b>
5.	Jenny Mitchell, Wake Forest	1988-91	.607

**MATCHING MILLENNIAL MILESTONES**

- Less than two minutes into the Iowa game on Nov. 30, **Brianna Turner** became the 36th player in Irish lore to crack the 1,000 career point plateau when **Marina Mabrey** lobbed a pass over the arms of a defender in the paint.
- **Lindsay Allen** had previously hit the 1,000-point marker this season during the game on Nov. 17 against Green Bay.
- Notre Dame last had two players reach the 1,000 career point plateau in the same season in 2013 when **Kayla McBride** and **Natalie Achonwa** each hit the millennial mark. Seven other Irish teams also saw two players hit the milestone but the school record of three was set back in 1985 (**Trena Keys**, **Mary Beth Schueth** and **Carrie Bates**).
- Notre Dame has seen at least one player reach 1,000 career points in eight of the last nine years with the exception coming in 2014-15.

**ND Career Scoring Leaders**

No.	Name	Years	Points
1.	Skylar Diggins	2009-13	2,357
2.	Beth Morgan (Cunningham)	1993-97	2,322
...			
22.	Megan Duffy	2002-06	1,290
23.	<b>Brianna Turner</b>	<b>2014-</b>	<b>1,275</b>
24.	Mary Beth Schueth	1981-85	1,233
25.	Letitia Bowen	1991-95	1,219
26.	Heidi Bunek	1985-89	1,202
27.	Krissi Davis	1987-91	1,194
28.	<b>Lindsay Allen</b>	<b>2013-</b>	<b>1,174</b>

**ALLEN ALWAYS THERE FOR IRISH**

- Senior **Lindsay Allen** has proved to be both dependable and durable throughout her Irish career and those numbers are reflected in her standing on several Notre Dame career record charts. The point guard has never missed a start in her Notre Dame career and seldom even leaves the court. Eight times this season (and 12 times in her career), Allen has played all 40 minutes of a game.
- Allen's streak of 136 consecutive starts has long since set a school record. The Pittsburgh game marked her 130th career start which moved her past **Alicia Ratay** (1999-03) for sec-

- ond in school history behind just the 144 games started by **Skylar Diggins** from 2009-13.
- Notre Dame boasts a 127-9 (.934) record in games started by Allen.
- Allen ranks fourth in school history with 4,084 career minutes played.
- Fittingly, Allen had two assists in the milestone 4,000th minute of her career.

**ND Most Consecutive Starts**

No.	Name	Dates	Starts
1.	<b>Lindsay Allen</b>	<b>11/9/13-</b>	<b>136</b>
2.	Jacqueline Batteast	1/26/02-3/21/05	97

**ND Career Games Started**

No.	Name	Years	Starts
1.	Skylar Diggins	2009-13	144
2.	<b>Lindsay Allen</b>	<b>2013-</b>	<b>136</b>
3.	Alicia Ratay	1999-03	129

**ND Career Minutes Played**

No.	Name	Years	Minutes
1.	Skylar Diggins	2009-13	4,639
2.	Alicia Ratay	1999-03	4,231
3.	Megan Duffy	2002-06	4,188
4.	<b>Lindsay Allen</b>	<b>2013-</b>	<b>4,084</b>

**PATTERSON NAMED McDONALD'S ALL-AMERICAN**

- For the sixth consecutive year, the Notre Dame women's basketball program is congratulating one of its signees for their selection to the prestigious McDonald's All-American teams as **Danielle Patterson** (Brooklyn, New York / The Mary Louis Academy) is the latest future Irish student-athlete to earn this distinction.
- Patterson will be one of eight McDonald's All-Americans on next year's roster, matching a school record set this season as Patterson would replace the graduating **Lindsay Allen** (2013) on this honored roll. Patterson will join McDoand's All-America Game alumni **Erin Boley** (2016), **Marina Mabrey** (2015), **Arike Ogunbowale** (2015), Ali Patberg (2015), **Brianna Turner** (2014), **Kathryn Westbeld** (2014) and **Jackie Young** (2016) on the 2017-18 Notre Dame team.
- Notre Dame's other signee for next year, **Mikayla Vaughn**, is playing for the top team in the nation as her Paul VI High School is Fairfax, Virginia sits as the No. 1 team in the nation in the espnW, USA Today and MaxPreps polls. Vaughn was a nominee for the McDonald's All-American team for her leading role in helping the Panthers to a current run of 34 consecutive wins.
- Patterson, who averages 22 points, eight rebounds and four assists per game this season, becomes the 18th McDonald's All-American to join the Irish since the boys program was extended to include girls in 2002.

**Notre Dame McDonald's All-American Girls**

- 2002 Courtney LaVere
- 2003 Crystal Erwin
- 2005 Lindsay Schrader
- 2007 Devereaux Peters
- 2009 Skylar Diggins
- 2010 Kayla McBride
- 2012 Jewell Loyd, Michaela Mabrey
- 2013 Lindsay Allen, Taya Reimer
- 2014 Brianna Turner, Kathryn Westbeld
- 2015 Marina Mabrey, Arrike Ogunbowale, Ali Patberg
- 2016 Erin Boley, Jackie Young
- 2017 Danielle Patterson

**YOUNG NAMED ACC ROOKIE OF THE WEEK**

- Freshman **Jackie Young** collected the first of what could be many honors over the potential Irish career on Dec. 5 when she was named the ACC's Rookie of the Week.
- Young had a break-through game in the Dec. 4, 114-54, win over Valparaiso, scoring 20 points – the high-water mark of her young Irish career. Young connected on eight of her nine shots in the contest and went 3-of-4 from 3-point range. She also had a career-high six steals against the Crusaders to go with five rebounds and three assists. Earlier in the week, on Nov. 30, Young tallied five points and grabbed three rebounds as the Irish claimed a 73-58 win at Iowa on Nov. 30 during the ACC/Big Ten Challenge.

**IRISH HELD UNANIMOUS POLE POSITION**

- Notre Dame received the No. 1 spot in the preseason Associated Press poll. Notre Dame stood at No. 2 in the preseason coaches poll but leapt up to No. 1 on Nov. 15, surpassing defending national champion Connecticut.
- This year marked Notre Dame's first time holding the AP's top spot entering a season.
- The only other time the Irish sat atop the AP poll came during the 2001 season when Notre Dame earned the No. 1 ranking for a total of five weeks – four straight from Jan. 22 to Feb. 12, regaining it on March 5.
- The Irish have made a habit of standing among the nation's elite in the AP poll. This week, Notre Dame is in the top 10 for the 216th time, surpassing North Carolina's 204 for the 10th-most AP top 10 appearances all-time. No. 3 Baylor is ninth at 221 (and counting).
- Notre Dame has now spent 142 weeks in the top five all-time, ranking eighth in AP poll history. Georgia is seventh with 145 weeks in the top five.
- Notre Dame has been ranked in the top 10 for each of the last 118 polls since a No. 11 ranking on Jan. 17, 2011.

**McGRAW GETS LEGENDS OF COACHING HONOR**

- Now in her 30th year at Notre Dame and 35th as a collegiate head coach, **Muffet McGraw's** legacy of success on the court is visible in the plethora of banners hanging above the Purcell Pavilion court. Her legacy of success off the court is plainly visible in the scores of Irish women's basketball alumni who have been successful in their professions and life.
- This dual-success has been recognized by the John R. Wooden Award Committee which on Oct. 11 announced McGraw as its 2017 Legends of Coaching Award recipient.
- The lifetime achievement award is presented to a singular college basketball coach who exemplifies Wooden's high standards of coaching success and personal achievement. The accolade is just the latest national honor for McGraw – the only three-time consensus national coach of the year.
- An enshrine in the Women's Basketball Hall of Fame and a 2016 finalist for induction in the Naismith Memorial Basketball Hall of Fame, McGraw is the third woman to receive the Legends of Coaching Award – an accolade first bestowed in 1999 upon Dean Smith of North Carolina. Its 18th recipient, McGraw joins Tennessee's Pat Summitt and Stanford's Tara VanDerveer as the lone female honorees.

**UP NEXT**

- The Irish will have Thursday off before playing host to Georgia Tech at 1 p.m. on Sunday. The game is Notre Dame's annual Pink Zone game, raising both awareness of and funds to help fight breast cancer.

## 2016-17 Notre Dame Women's Basketball Alphabetical Roster

No.	Name	Ht.	Pos.	Yr.	Hometown	Last Team
15	Lindsay Allen	5-8	G	Sr.	Mitchellville, Md.	St. John's College
22	Erin Boley	6-2	F	Fr.	Hodgenville, Ky.	Elizabethtown HS
14	Mychal Johnson	5-7	G	Jr.	Huntington, W. Va.	Huntington St. Joseph HS
3	Marina Mabrey	5-11	G	So.	Belmar, N.J.	Manasquan HS
21	Kristina Nelson	6-4	F	Sr.	Buford, Ga.	Buford HS
24	Arike Ogunbowale	5-8	G	So.	Milwaukee, Wis.	Divine Savior Holy Angels HS
20	Ali Patberg	5-10	G	So.	Columbus, Ind.	Columbus North HS
35	Diamond Thompson	6-5	C	Sr.	Wheaton, Ill.	Wheaton Warrenville South HS
11	Brianna Turner	6-3	F	Jr.	Pearland, Texas	Manvel HS
33	Kathryn Westbeld	6-2	F	Jr.	Kettering, Ohio	Kettering Fairmont HS
5	Jackie Young	6-0	G	Fr.	Princeton, Ind.	Princeton Community HS

## 2016-17 Notre Dame Women's Basketball Numerical Roster

No.	Name	Ht.	Pos.	Yr.	Hometown	Last Team
3	Marina Mabrey	5-11	G	So.	Belmar, N.J.	Manasquan HS
5	Jackie Young	6-0	G	Fr.	Princeton, Ind.	Princeton Community HS
11	Brianna Turner	6-3	F	Jr.	Pearland, Texas	Manvel HS
14	Mychal Johnson	5-7	G	Jr.	Huntington, W. Va.	Huntington St. Joseph HS
15	Lindsay Allen	5-8	G	Sr.	Mitchellville, Md.	St. John's College
20	Ali Patberg	5-10	G	So.	Columbus, Ind.	Columbus North HS
21	Kristina Nelson	6-4	F	Sr.	Buford, Ga.	Buford HS
22	Erin Boley	6-2	F	Fr.	Hodgenville, Ky.	Elizabethtown HS
24	Arike Ogunbowale	5-8	G	So.	Milwaukee, Wis.	Divine Savior Holy Angels HS
33	Kathryn Westbeld	6-2	F	Jr.	Kettering, Ohio	Kettering Fairmont HS
35	Diamond Thompson	6-5	C	Sr.	Wheaton, Ill.	Wheaton Warrenville South HS

### Coaches and Staff

Muffet McGraw: Karen and Kevin Keyes Family Head Women's Basketball Coach (St. Joseph's (Pa.) '77)

Carol Owens: Associate Head Coach (Northern Illinois '90)

Niele Ivey: Associate Head Coach / Recruiting Coordinator (Notre Dame '00)

Beth Cunningham: Associate Coach (Notre Dame '97)

Katie Capps: Director of Basketball Operations (Western Kentucky '02)

Erica Williamson: Video Coordinator (Notre Dame '10)

Sharla Lewis: Special Events Coordinator (Chicago State '99)

Anne Marquez: Athletic Trainer (West Florida '01)

### Pronunciation Key

3	Marina <b>MAY-bree</b>
11	<b>bree-ON-uh</b> Turner
22	Erin <b>BOH-lee</b>
24	<b>uh-REE-kay OH-goan-buh-WALL-ay</b>
--	<b>knee-ELL</b> Ivey

### By State

<b>GEORGIA</b>	
Kristina Nelson	Buford
<b>ILLINOIS</b>	
Diamond Thompson	Wheaton
<b>INDIANA</b>	
Ali Patberg	Columbus
Jackie Young	Princeton
<b>KENTUCKY</b>	
Erin Boley	Hodgenville
<b>MARYLAND</b>	
Lindsay Allen	Mitchellville
<b>NEW JERSEY</b>	
Marina Mabrey	Belmar
<b>OHIO</b>	
Kathryn Westbeld	Kettering
<b>TEXAS</b>	
Brianna Turner	Pearland
<b>WEST VIRGINIA</b>	
Mychal Johnson	Huntington
<b>WISCONSIN</b>	
Arike Ogunbowale	Milwaukee

### By Class

<b>SENIORS</b>		
Lindsay Allen	G	Mitchellville, Md.
Kristina Nelson	F	Buford, Ga.
Diamond Thompson	C	Wheaton, Ill.
<b>JUNIORS</b>		
Mychal Johnson	G	Huntington, W. Va.
Brianna Turner	F	Pearland, Texas
Kathryn Westbeld	F	Kettering, Ohio
<b>SOPHOMORES</b>		
Marina Mabrey	G	Belmar, N.J.
Arike Ogunbowale	G	Milwaukee, Wis.
Ali Patberg	G	Columbus, Ind.
<b>FRESHMEN</b>		
Erin Boley	F	Hodgenville, Ky.
Jackie Young	G	Princeton, Ind.

### By Position

<b>CENTER</b>		
Diamond Thompson	C	Wheaton, Ill.
<b>FORWARDS</b>		
Erin Boley	F	Hodgenville, Ky.
Kristina Nelson	F	Buford, Ga.
Brianna Turner	F	Pearland, Texas
Kathryn Westbeld	F	Kettering, Ohio
<b>GUARDS</b>		
Lindsay Allen	G	Mitchellville, Md.
Mychal Johnson	G	Huntington, W. Va.
Marina Mabrey	G	Belmar, N.J.
Arike Ogunbowale	G	Milwaukee, Wis.
Ali Patberg	G	Columbus, Ind.
Jackie Young	G	Princeton, Ind.



## Notre Dame Radio/TV Roster



**#3  
MARINA  
MABREY**  
5-11 | G | So.  
Belmar, N.J.  
Manasquan



**#5  
JACKIE  
YOUNG**  
6-0 | G | Fr.  
Princeton, Ind.  
Princeton Community



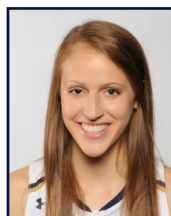
**#11  
BRIANNA  
TURNER**  
6-3 | F | Jr.  
Pearland, Texas  
Manvel



**#14  
MYCHAL  
JOHNSON**  
5-7 | G | Jr.  
Huntington, W.Va.  
Huntington St. Joseph



**#15  
LINDSAY  
ALLEN**  
5-8 | G | Sr.  
Mitchellville, Md.  
St. John's College



**#20  
ALI  
PATBERG**  
5-10 | G | So.  
Columbus, Ind.  
Columbus North



**#21  
KRISTINA  
NELSON**  
6-4 | F | Sr.  
Buford, Ga.  
Buford



**#22  
ERIN  
BOLEY**  
6-2 | F | Fr.  
Hodgenville, Ky.  
Elizabethtown



**#24  
ARIKE  
OGUNBOWALE**  
5-8 | G | So.  
Milwaukee, Wis.  
Divine Savior Holy Angels



**#33  
KATHRYN  
WESTBELD**  
6-2 | F | Jr.  
Kettering, Ohio  
Kettering Fairmont



**#35  
DIAMOND  
THOMPSON**  
6-5 | C | Sr.  
Wheaton, Ill.  
Wheaton Warrenville South

## Coaching and Support Staff



**MUFFET  
McGRAW**  
Head Coach  
30th Year at ND  
St. Joseph's '77



**CAROL  
OWENS**  
Assoc. Head Coach  
17th Year at ND  
N. Illinois '90



**NIELE  
IVEY**  
Assoc. Head Coach  
10th Year at ND  
Notre Dame '00



**BETH  
CUNNINGHAM**  
Associate Coach  
5th Year at ND  
Notre Dame '97



**KATIE  
CAPPS**  
Dir. of Basketball Ops.  
2nd Year at ND  
W. Kentucky '02



**ERICA  
WILLIAMSON**  
Video Coordinator  
1st Year at ND  
Notre Dame '10



**SHARLA  
LEWIS**  
Spec. Events Coord.  
6th Year at ND  
Chicago State '99



**ANNE  
MARQUEZ**  
Athletic Trainer  
11th Year at ND  
West Florida '01

## Miscellaneous Notre Dame Statistics

### LEADING SCORER

Brianna Turner	6 (26)
Arike Ogunbowale	11 (18)
Marina Mabrey	7 (13)
Lindsay Allen	1 (7)
Kathryn Westbeld	0 (2)
Jackie Young	1 (1)

### LEADING REBOUNDER

Brianna Turner	12 (49)
Kathryn Westbeld	5 (23)
Arike Ogunbowale	2 (7)
Lindsay Allen	3 (6)
Kristina Nelson	3 (3)
Mychal Johnson	1 (1)
Jackie Young	1 (1)
Diamond Thompson	0 (1)

### LEADER IN ASSISTS

Lindsay Allen	22 (98)
Marina Mabrey	2 (4)
Kathryn Westbeld	0 (2)
Kristina Nelson	1 (1)
Mychal Johnson	0 (1)

### GAMES STARTED

Lindsay Allen	24 (136)
Brianna Turner	24 (88)
Marina Mabrey	23 (25)
Arike Ogunbowale	23 (23)
Kathryn Westbeld	20 (53)
Mychal Johnson	3 (3)
Erin Boley	3 (3)

### 20-POINT SCORING GAMES

<b>Opponents</b>	<b>7</b>
<b>Notre Dame</b>	<b>12</b>

Brianna Turner	4 (14)
Lindsay Allen	0 (7)
Marina Mabrey	4 (5)
Arike Ogunbowale	3 (4)
Jackie Young	1 (1)

### 30-POINT SCORING GAMES

<b>Opponents</b>	<b>1</b>
<b>Notre Dame</b>	<b>1</b>

Arike Ogunbowale	1 (1)
------------------	-------

### 40-POINT SCORING GAMES

<b>Opponents</b>	<b>0</b>
<b>Notre Dame</b>	<b>0</b>

### TECHNICAL/FLAGRANT FOULS

<b>Opponents</b>	<b>0</b>
<b>Notre Dame</b>	<b>0</b>

Lindsay Allen	0 (2)
---------------	-------

### FOUR-POINT PLAYS

<b>Opponents</b>	<b>1</b>
<b>Notre Dame</b>	<b>0</b>

### JUMP BALLS CONTROLLED

<b>Opponents</b>	<b>3</b>
<b>Notre Dame</b>	<b>21</b>

Brianna Turner	21-24 (.875)
----------------	--------------

### FIRST SCORE

<b>Opponents</b>	<b>8</b>
<b>Notre Dame</b>	<b>16</b>

Arike Ogunbowale	5
Brianna Turner	5
Marina Mabrey	3
Lindsay Allen	2
Kathryn Westbeld	1

### RUNS OF 10-0 OR BETTER

<b>Opponents</b>	<b>5</b>
<b>Notre Dame</b>	<b>20</b>

### LARGEST HALFTIME LEAD

49 vs. Valparaiso, 12/4/16

### LARGEST HALFTIME DEFICIT

6 at NC State, 12/29/16

### LARGEST LEAD

62 vs. Valparaiso, 12/4/16

### LARGEST DEFICIT

19 at NC State, 12/29/16

### LARGEST DEFICIT OVERCOME TO WIN

9 vs. Duke, 1/26/17

### LARGEST LEAD GIVEN UP IN LOSS

15 vs. Tennessee, 1/16/17

### LARGEST WIN

60 vs. Central Michigan, 11/11/16  
60 vs. Valparaiso, 12/4/16

### LARGEST DEFEAT

11 vs. UConn, 12/7/16

### MOST CONSECUTIVE PTS

26 vs. Valparaiso, 12/4/16

### MOST CONSECUTIVE OPP PTS

16 at NC State, 12/29/16

### LONGEST WINNING STREAK

8 (Nov. 11-Dec. 4)

### LONGEST LOSING STREAK

1 (Three times)

### LARGEST HOME CROWD

9,149 vs. UConn, 12/7/16  
9,149 vs. Virginia, 1/29/17

### LARGEST ROAD CROWD

10,517 at Tennessee, 1/16/17

### LARGEST NEUTRAL SITE CROWD

767 vs. UL-Lafayette, 11/22/16

*NOTE: totals may not add up to games played due to ties ... figures in parentheses by player totals are career totals*

### Double-Figure Points

	2016-17	Career
Brianna Turner	20	73
Arike Ogunbowale	19	42
Marina Mabrey	15	37
Lindsay Allen	11	53
Kathryn Westbeld	9	31
Jackie Young	6	6
Erin Boley	4	4
Mychal Johnson	1	5
Kristina Nelson	1	3

### Double-Figure Rebounds

	2016-17	Career
Brianna Turner	7	25
Kathryn Westbeld	1	5
Lindsay Allen	2	2
Arike Ogunbowale	1	1

### 5-5-5 Games (aka "Stat Sheet Stuffers")

	2016-17	Career
Lindsay Allen	12	32
Brianna Turner	4	15
Marina Mabrey	1	2
Jackie Young	1	1
Kathryn Westbeld	1	1
Kristina Nelson	1	1
Arike Ogunbowale	1	1

*NOTE: At least 5 in three of five statistical categories (points, rebounds, assists, steals or blocks)*

### Double-Doubles

	2016-17	Career
Brianna Turner	6	21
Kathryn Westbeld	1	3
Lindsay Allen	1	1
Arike Ogunbowale	1	1
Marina Mabrey	0	1

### Triple-Doubles

	2016-17	Career
Lindsay Allen	1	1
Marina Mabrey	0	1

### Clutch Free Throws (final 5 min. + OT)

	FT-FTA	Pct.
Mychal Johnson	3-3	1.000
Erin Boley	16-18	.889
Jackie Young	7-8	.875
Marina Mabrey	15-18	.833
Brianna Turner	3-4	.750
Arike Ogunbowale	5-8	.625
Lindsay Allen	9-17	.529
Kristina Nelson	6-12	.500
Diamond Thompson	1-2	.500
<b>'16-17 Team Totals</b>	<b>65-90</b>	<b>.722</b>

## The Last Time Notre Dame...

## SCORING

**Player scored 25 points:** Marina Mabrey (26) vs. Virginia, 1/29/17  
**Player scored 30 points:** Arike Ogunbowale (31) vs. Central Michigan, 11/11/16  
**Player scored 35 points:** see 40 points  
**Player scored 40 points:** Jewell Loyd (41) at DePaul, 12/10/14  
**Player came off bench and scored 20 points:** Jackie Young (20), vs. Valparaiso, 12/4/16  
**Two players scored 20 points:** Marina Mabrey (26) & Arike Ogunbowale (21) vs. Virginia, 1/29/17  
**Three players scored 20 points:** Danielle Green (28), Sheila McMillen (26), Ruth Riley (23) vs. West Virginia, 1/7/99  
**Two players scored 25 points:** Jewell Loyd (26) & Kayla McBride (25) vs. Duke, 3/9/14 (@ Greensboro, N.C.)  
**Player scored 25 points/consecutive games:** Jewell Loyd (34 vs. Tennessee, 1/19/15; 29 vs. Georgia Tech, 1/22/15)  
**None in double figures:** at Seton Hall, 2/8/04  
**One in double figures:** Brianna Turner (25) vs. Duke, 1/26/17  
**Six in double figures:** Jackie Young (20), Arike Ogunbowale (18), Marina Mabrey (16), Erin Boley (15), Brianna Turner (13), Kathryn Westbeld (10), vs. Valparaiso, 12/4/16  
**Seven in double figures:** see eight in double figures  
**Eight in double figures:** Devereaux Peters (20), Natalie Achonwa (19), Kaila Turner (14), Natalie Novosel (13), Skylar Diggins (11), Brittany Mallory (11), Kayla McBride (11) and Markisha Wright (11) vs. Pittsburgh, 1/17/12  
**ND scored 50 points/half:** See 55 points/half  
**ND scored 55 points/half:** 55 (1st half) vs. Wake Forest, 1/5/17  
**ND scored 60 points/half:** 72 (1st half) vs. Valparaiso, 12/4/16  
**ND scored 50 points in both halves:** 56 (1st) & 56 (2nd) vs. Central Michigan, 11/11/16  
**ND scored 100 points/game:** 114 vs. Valparaiso, 12/4/16  
**ND scored 100 points/home game:** 114 vs. Valparaiso, 12/4/16  
**ND scored 100 points/neutral site:** 100 vs. Duquesne, 12/1/13 (@ Toronto, Ontario)  
**ND scored 100 points/conference game:** 104 vs. Boston College, 1/11/15  
**ND scored fewer than 15 points/half:** 11 (1st half) at West Virginia, 1/13/08  
**ND scored fewer than 20 points/half:** 19 (1st half) at Connecticut, 1/16/10  
**ND scored fewer than 50 points/game:** 44 at Connecticut, 3/8/10

## FIELD-GOAL SHOOTING

**Player made every shot from the field (min. 7):** Taya Reimer (8-8) vs. Louisville, 2/23/15  
**ND shot 55 percent/game:** see 60 percent/game  
**ND shot 55 percent/consecutive games:** 62.1 (36-58) vs. DePaul, 12/9/15; 55.0 (33-60) at TCU, 12/12/15; 59.0 (36-61) at Saint Joseph's (Pa.), 12/21/15  
**ND shot 60 percent/game:** 60.0 (39-65) vs. Wake Forest, 1/5/17  
**ND shot 65 percent/game:** see 70 percent/game  
**ND shot 70 percent/game:** 70.2 (40-57) at Mercer, 12/30/11  
**ND shot below 25 percent/game:** 24.5 (13-53) at West Virginia, 1/13/08  
**ND shot below 30 percent/game:** 29.7 (22-74) vs. Connecticut, 4/7/13 (@ New Orleans, La.)  
**ND shot below 35 percent/game:** 33.3 (21-63) vs. Connecticut, 4/7/15 (@ Tampa, Fla.)  
**ND shot below 35 percent/game and won:** 34.8 (23-66) vs. South Florida, 3/10/13 (@ Hartford, Conn.)  
**ND shot 55 percent/half:** 59.4 (19-32), 2nd half at Virginia Tech, 2/2/17  
**ND shot 60 percent/half:** 64.9 (24-37), 1st half vs. Wake Forest, 1/5/17  
**ND shot 65 percent/half:** 68.2 (15-22), 2nd half at Toledo, 12/18/16  
**ND shot 70 percent/half:** 71.4 (30-42), 1st half vs. Valparaiso, 12/4/16  
**ND shot 55 percent/both halves:** 59.4 (19-32) and 55.6 (20-36), vs. UL-Lafayette, 11/22/16  
**ND shot below 25 percent/half:** 24.0 (6-25), 1st half at Miami, 1/8/15  
**ND shot below 30 percent/half:** 29.1 (7-24), 2nd half at Georgia Tech, 1/2/17

## THREE-POINT SHOOTING

**Player made 4 three-pointers/half:** Arike Ogunbowale (1st half) vs. Virginia, 1/29/17  
**Player made 5 three-pointers/half:** Michaela Mabrey (1st half) at Boston College, 2/8/15  
**Player made 5 three-pointers:** Arike Ogunbowale vs. Pittsburgh, 1/12/17  
**Player made 6 three-pointers:** Michaela Mabrey vs. Syracuse, 1/21/16  
**Player made 7 three-pointers:** Alicia Ratay at Providence, 2/16/03  
**Player made 8 three-pointers:** Sheila McMillen vs. St. John's, 2/28/98 (@ Piscataway, N.J.)  
**Player attempted 10 three-pointers:** Marina Mabrey (11) vs. Virginia, 1/29/17  
**ND made 10 three-pointers:** 10 vs. Wake Forest, 1/5/17  
**ND did not make a three-pointer:** vs. Saint Joseph's (Pa.), 12/21/14  
**ND attempted 20 three-pointers:** 22 vs. Valparaiso, 12/4/16  
**ND shot 60 percent 3FG (min. 5 att.):** 62.5 (5-8) at Tennessee, 1/16/17

## FREE-THROW SHOOTING

**Player made 10 free-throws:** Marina Mabrey (10) vs. Virginia, 1/29/17  
**Player made 15 free-throws:** Jewell Loyd (15) at DePaul, 12/10/14  
**Player attempted 15 free-throws:** Brianna Turner (16) at North Carolina, 1/15/15  
**Player made 10 for 10 or better:** 12-12 by Natalie Novosel vs. South Florida, 2/25/12  
**ND shot 90 percent (min. 10 att.):** 90. (9-10) vs. Duke, 1/26/17  
**ND shot below 50 percent (min. 10 att.):** 36.4 (4-11) at NC State, 12/29/16  
**ND made 30 free-throws:** 31 (attempted 46) vs. UCLA, 11/28/15 (@ Freeport, Bahamas)  
**ND made fewer than five FTs:** 4 (attempted 7) vs. Wake Forest, 1/5/17  
**ND attempted 40 free-throws:** 46 (made 31) vs. UCLA, 11/28/15 (@ Freeport, Bahamas)  
**ND attempted fewer than five FTs:** 2 (made 2) at Connecticut, 3/8/10

## REBOUNDS

**Player had 15 rebounds:** Brianna Turner (18) at North Carolina, 1/15/15  
**Player had 20 rebounds:** Natalie Achonwa (20) vs. South Florida, 3/10/13 (@ Hartford, Conn.)  
**Two players had double-figure rebounds:** Taya Reimer (11) and Brianna Turner (10) vs. Connecticut, 4/7/15 (@ Tampa, Fla.)  
**Three players had double-figure rebounds:** Jewell Loyd (12), Madison Cable (11) and Taya Reimer (11) at DePaul, 12/10/14  
**ND had 50 rebounds:** 60 vs. UL-Lafayette, 11/22/16  
**ND had 20 offensive rebounds:** 20 vs. TCU 11/26/16  
**ND had 25 offensive rebounds:** 28 vs. Connecticut, 4/7/13 (@ New Orleans, La.)  
**ND had 30 offensive rebounds:** 30 vs. Longwood, 12/28/11

## DOUBLE-DOUBLES

**Points & rebounds:** Arike Ogunbowale (16/10) at Virginia Tech, 2/2/17  
**Points & rebounds/consecutive games:** Brianna Turner (24/12) at North Carolina, 1/26/17; (25/12) vs. Duke, 1/26/17  
**Points & rebounds/3 consecutive games:** Natalie Achonwa (11/14) at Iowa, 3/26/13; (17/10) vs. Kansas, 3/31/13 (@ Norfolk, Va.); vs. Duke (17/13), 4/2/13 (@ Norfolk, Va.)  
**Points & rebounds/4 consecutive games:** Jacqueline Batteast (14/11) vs. Virginia Tech, 1/10/04; (23/11) vs. Connecticut, 1/13/04; (22/10) at West Virginia, 1/17/04; (12/10) at Syracuse, 1/21/04  
**Points & rebounds/5 consecutive games:** Jacqueline Batteast (20/10) vs. Western Michigan, 12/12/01; (11/12) vs. Marquette, 12/22/01; (23/10) at Rice, 12/28/01; (25/14) vs. DePaul, 12/31/01; (12/13) at Miami (Fla.), 1/2/02  
**Points & assists:** Marina Mabrey (18/10) at Valparaiso, 11/23/15  
**Rebounds & assists:** Lindsay Allen (11/10) vs. Virginia 1/29/17  
**Points & assists/consecutive games:** Niele Ivey (12/10) at Valparaiso, 11/17/00; (14/11) vs. Arizona, 11/20/00  
**Two players had double-doubles:** Brianna Turner (14p/11r) and Taya Reimer (14p/10r) vs. DePaul, 3/22/15  
**Three players had double-doubles:** Jewell Loyd (41p/12r), Madison Cable (20p/11r) and Taya Reimer (15p/11r) at DePaul, 12/10/14  
**15 points and 15 rebounds:** Brianna Turner (29/18) at North Carolina, 1/15/15  
**20 points and 10 rebounds:** Brianna Turner (25/12) vs. Duke, 1/26/17  
**20 points and 20 rebounds:** Natalie Achonwa (20/20) vs. South Florida, 3/10/13 (@ Hartford, Conn.)

## TRIPLE-DOUBLES (only six in school history)

Lindsay Allen (11p/11r/12a) at Chattanooga, 12/27/16  
 Marina Mabrey (18p/10a/12s) at Valparaiso, 11/23/15  
 Skylar Diggins (17p/10r/10a) at DePaul, 2/24/13  
 Skylar Diggins (22p/10r/11a) vs. Maryland, 3/27/12 (@ Raleigh, N.C.)  
 Sara Liebscher (17p/12r/10a) vs. Detroit, 2/15/90  
 Mary Gavin (11p/14a/10s) vs. Marquette, 1/31/87

## ASSISTS

**Player had 10 assists:** Lindsay Allen (10) vs. Virginia, 1/29/17  
**Player had 10 assists/consecutive games:** Lindsay Allen (11 at North Carolina, 1/22/17; 12 vs. Duke, 1/26/17; 10 vs. Virginia, 1/29/17)  
**Player had 15 assists:** Mary Gavin (17) at Marquette, 2/28/87  
**ND had 30 assists:** 30 vs. Central Michigan, 12/22/13  
**ND had fewer than 10 assists:** 9 vs. Florida State, 1/2/15  
**ND had fewer than 5 assists:** 3 vs. Villanova, 3/8/09 (@ Hartford, Conn.)

## BLOCKED SHOTS

**Player blocked 5 shots:** see 6 blocks  
**Player blocked 6 shots:** Brianna Turner (6) at North Carolina, 1/22/17  
**Player blocked 10 shots:** Amanda Barksdale (11) vs. Boston College, 2/10/02  
**ND blocked 10 shots:** 10 vs. Syracuse, 1/21/16  
**ND blocked 15 shots:** 16 vs. Boston College, 2/10/02  
**ND blocked 0 shots:** vs. Duke, 2/23/14

## STEALS

**Player had 5 steals:** Jackie Young (6) vs. Valparaiso, 12/4/16  
**Player had 10 steals:** Marina Mabrey (12) at Valparaiso, 11/23/15  
**ND had 20 steals:** 21 vs. Saint Francis (Pa.), 12/31/12

## TURNOVERS

**ND committed 25 or more:** 28 vs. Georgetown, 1/15/13  
**ND committed 25 or more and won:** see 25 or more  
**ND committed 30 or more:** 30 at West Virginia, 2/22/11  
**ND committed 10 or fewer:** 10 at Michigan State, 12/20/16  
**ND committed 10 or fewer/consecutive games:** 7 at Saint Joseph's (Pa.), 12/21/14; 7 vs. Oregon State, 12/28/15  
**ND committed 5 or fewer:** 5 at Duke, 2/1/16

## MISCELLANEOUS

**Led ND in points/rebounds/assists:** Jewell Loyd (27p/8r/6a) vs. Maryland, 12/3/14 (@ Fort Wayne, Ind.)  
**Hit "final minute" game-winning shot:** Kathryn Westbeld (FT/0:26.2, 2nd) vs. Ohio State, 12/2/15  
**Four-point play:** Madison Cable (9-52, 2nd half) vs. Wake Forest, 2/1/15  
**Made shot from midcourt or beyond:** Lindsay Allen (50 feet at 0:00, 1st half) vs. Florida State, 1/2/15  
**Played every minute:** Lindsay Allen (40) vs. Virginia, 1/29/17  
**Played more than 40 minutes:** Jewell Loyd (42) and Michaela Mabrey (41) at DePaul, 12/10/14  
**ND rallied from 10-point deficit to win:** trailed at North Carolina, 23-34 (5:28 - 1st); won 89-79, 1/15/15  
**ND rallied from 15-point deficit to win:** trailed vs. Syracuse, 7-22 (12:45 - 1st); won 79-68, 2/26/13  
**ND scored 20 straight points:** see 25 straight points  
**ND scored 25 straight points:** 26-0 run vs. Valparaiso, 12/4/16  
**ND scored 30 straight points:** 36-0 run vs. Southeast Missouri State, 1/2/11

## OVERTIME

**ND played an OT game:** vs. UCLA (W, 92-84, ot), 11/28/15 (@ Freeport, Bahamas)  
**ND played multiple overtimes:** vs. Connecticut (W, 96-87, 3ot), 3/4/13  
**ND won an OT game:** see played an OT game  
**ND won an OT game at home:** vs. Connecticut (W, 96-87, 3ot), 3/4/13  
**ND won an OT game on the road:** at DePaul (W, 94-93, ot), 12/10/14  
**ND lost an OT game:** vs. UCLA (L, 86-83, 2ot), 11/18/10

## RANKINGS

**Played the No. 1 team in the AP poll:** lost vs. Connecticut (72-61), 12/7/16  
**Played the No. 1 team in the WBCA/USA Today poll:** lost at Connecticut (91-81), 12/5/15  
**Defeated top-10 opponent:** at #12/9 Florida State (73-66), 2/22/16  
**Defeated top-10 opponent at home:** vs. #10/9 Oregon State (62-61), 12/28/15  
**Defeated top-10 opponent on the road:** see defeated top-10 opponent  
**Defeated top-10 opponent by double digits:** vs. #7/6 Florida State (71-58), 3/8/15 (@ Greensboro, N.C.)

## The Last Time An Opponent...

### SCORING

**Player scored 25 points:** Erica McCall (27) vs. Stanford, 3/25/16 (@ Lexington, Ky.)  
**Player scored 30 points:** Adrienne Motley (32) at Miami, 1/8/15  
**Player scored 35 points:** Heather Butler (37), UT Martin, 3/24/13 (@ Iowa City, Iowa)  
**Two players scored 20 points:** Erica McCall (27) and Karlie Samuelson (20) vs. Stanford, 3/25/16 (@ Lexington, Ky.)  
**Three players scored 20 points:** Angela Simpson (37), Bridgette Williams (24) and Stephanie Shaw (22), Northwestern State, 3/24/95 (@ Amarillo, Texas)  
**Two players scored 25 points:** Brittney Griner (32) and Odyssey Sims (25) at Baylor, 11/20/11  
**None in double figures:** at Georgia Tech, 1/2/17 (Zaire O'Neil had nine points)  
**One in double figures:** AJ Alix (16), vs. TCU, 11/26/16  
**Five in double figures:** Erica McCall (27), Karlie Samuelson (20), Kaylee Johnson (17), Lili Thompson (11) and Marta Sniezek (11) vs. Stanford, 3/25/16 (@ Lexington, Ky.)  
**Six in double figures:** Jannon Roland (21), Danielle McCulley (14), Jennifer Jacoby (12), Stacey Lovelace (12), Nicole Erickson (11) and Shannon Lindsey (11), Purdue, 11/30/94  
**Scored 50 points/half:** 50 (1st half), vs. Stanford, 3/25/16 (@ Lexington, Ky.)  
**Scored 55 points/half:** see 60 points/half  
**Scored 60 points/half:** 63 (2nd half), Northwestern State, 3/24/95 (@ Amarillo, Texas)  
**Scored 100 points/game:** 106, Connecticut, 12/8/98  
**Scored 100 points/non-conference game:** 103, Northwestern State, 3/24/95 (@ Amarillo, Texas)  
**Scored fewer than 15 points/half:** 11 (1st half), Virginia Tech, 1/24/16  
**Scored fewer than 20 points/half:** 17 (1st half), at Georgia Tech, 1/2/17  
**Scored fewer than 40 points/game:** 38, at Georgia Tech, 1/2/17

### FIELD-GOAL SHOOTING

**Shot 50 percent/game:** 50.0 (27-54), at Boston College, 1/19/17  
**Shot 55 percent/game:** 55.9 (33-59), vs. Stanford, 3/25/16 (@ Lexington, Ky.)  
**Shot 60 percent/game:** 60.0 (30-50), DePaul, 1/22/08  
**Shot below 20 percent/game:** 18.6 (11-59), Holy Cross, 11/23/14  
**Shot below 25 percent/game:** 24.1 (14-58), at Georgia Tech, 1/2/17  
**Shot below 30 percent/game:** See 30 percent/game  
**Shot 50 percent/half:** see 55 percent/half  
**Shot 55 percent/half:** 55.6 (15-17), 1st half at Boston College, 1/19/17  
**Shot 60 percent/half:** 64.5 (20-31), 1st half vs. Stanford, 3/25/16 (@ Lexington, Ky.)  
**Shot 65 percent/half:** 68.2 (15-22), 2nd half by Texas A&M, 4/5/11 (@ Indianapolis, Ind.)  
**Shot 70 percent/half:** 70.0 (14-20), 2nd half by New Hampshire, 11/12/10  
**Shot 50 percent/both halves:** 51.4 (19-37) and 53.8 (14-26) at Connecticut, 12/5/15  
**Shot below 20 percent/half:** 16.0 (4-25), 1st half by Virginia Tech, 1/24/16  
**Shot below 25 percent/half:** 21.9 (7-32) 1st half at Georgia Tech, 1/2/17  
**Shot below 30 percent/half:** 27.3 (6-22) 1st half vs. Pittsburgh, 1/12/17  
**Shot below 30 percent/both halves:** 21.9 (7-32) and 26.9 (7-26) at Georgia Tech, 1/2/17

### THREE-POINT SHOOTING

**Player made 5 three-pointers:** Alayna Gribble, Pittsburgh, 1/12/17  
**Player made 6 three-pointers:** Heather Butler, UT Martin, 3/24/13 (@ Iowa City, Iowa)  
**Player made 7 three-pointers:** Angie Bjorklund, Tennessee, 1/5/08  
**Player attempted 10 three-pointers:** Alayna Gribble (12), Pittsburgh, 1/12/17  
**Made 10 three-pointers:** 12, vs. Wake Forest, 1/5/17  
**Did not make a three-pointer:** Duke, 2/16/15  
**Shot 50 percent 3FG (min. 5 att.):** 55.6 (10-18), Wake Forest, 1/5/17  
**Shot 60 percent 3FG (min. 5 att.):** 60.0 (6-10), Tennessee, 1/19/15

### FREE-THROW SHOOTING

**Player made 10 free-throws:** Brianna Kiesel (10), Pittsburgh, 2/26/15  
**Player made 15 free-throws:** Nok Duany (15) at Georgetown, 2/23/02  
**Player attempted 15 free-throws:** Brittany Hrynko (16) at DePaul, 12/10/14  
**Player made 10 for 10 or better:** Allisha Gray (10-10) at North Carolina, 1/15/15  
**Shot 90 percent (min. 10 att.):** 93.3 (14-15), at NC State, 12/29/16  
**Shot below 50 percent (min. 10 att.):** 45.0 (9-12) at Georgia Tech, 1/2/17  
**Made 30 free-throws:** 32 (attempted 37), Illinois, 11/24/98  
**Made fewer than five FTs:** 4 (attempted 8) at North Carolina, 1/22/17  
**Attempted 40 free-throws:** 45 (made 28), at South Florida, 1/13/07  
**Attempted fewer than five FTs:** 1 (made 1) vs. Valparaiso, 12/4/16

### REBOUNDS

**Player had 15 rebounds:** Jessica Lindstrom (16), vs. Green Bay, 11/17/16  
**Player had 20 rebounds:** Wendy Scholtens (20) at Vanderbilt, 1/8/89  
**Two players had double-figure rebounds:** Oderah Chidom (11) and Azurá Stevens (10) vs. Duke, 3/4/16 (@ Greensboro, N.C.)  
**Three players had double-figure rebounds:** Aurora Adams (16), Brenda McCunn (11) and Paula Langseth (10), Hawaii, 3/22/81 (@ Anchorage, Alaska)  
**Had 50 rebounds:** 55, Syracuse, 1/21/16  
**Out-rebounded ND by 10 or more:** 13, at Toledo, 12/18/16 (UT 40, ND 27)

### DOUBLE-DOUBLES

**Points & rebounds:** Regan Magarity (13/10) at Virginia Tech, 2/2/17  
**Points & assists:** Chanise Jenkins (12/10) at DePaul, 12/10/14  
**Points & steals:** Alexis Jones (16/10) at Duke, 2/2/14  
**Two players had double-doubles:** Nina Davis (26/13) and Sune Agbuke (12/10), Baylor, 3/29/15 (@ Oklahoma City, Okla.)  
**Three players had double-doubles:** Mary Raese (24p/10r), Mary Westerwelle (11p/10r) and Ne-tra McGrew (10p/10a), Idaho, 3/21/86 (@ Amarillo, Texas)  
**15 points and 15 rebounds:** See 15/15  
**20 points and 10 rebounds:** Mariella Fasoula (20/14) at Boston College, 1/19/17  
**20 points and 20 rebounds:** Wendy Scholtens (29/20) at Vanderbilt, 1/8/89

### TRIPLE-DOUBLES

**Points, rebounds, assists:** Liad Suez-Karni (14p/10r/10a), Villanova, 2/7/06  
**Points, rebounds, steals:** Diana Vines (23p/11r/12s) at DePaul, 1/24/89

### ASSISTS

**Player had 10 assists:** Aysia Bugg (10) at Pittsburgh, 1/3/16  
**Player had 15 assists:** Veronica Pettry (16) at Loyola-Chicago, 2/18/89  
**Had 25 assists:** 25, Connecticut, 4/8/14 (@ Nashville, Tenn.)  
**Had 30 assists:** 30 at Loyola-Chicago, 2/18/89  
**Had fewer than 10 assists:** 7, at North Carolina, 1/22/17  
**Had 5 or fewer assists:** 5, at Georgia Tech, 1/2/17

### BLOCKED SHOTS

**Player blocked 5 shots:** Jassany Williams (9) at Miami, 1/8/15  
**Blocked 10 shots:** 10 at Miami, 1/8/15  
**Blocked 15 shots:** 16 at Connecticut, 1/27/07  
**Blocked 0 shots:** at Boston College, 1/19/17

### STEALS

**Player had 5 steals:** J'Kyra Brown, Virginia, 1/29/17  
**Player had 6 steals:** see player had seven steals  
**Player had 7 steals:** Kala Green, North Carolina A&T, 3/19/16  
**Player had 10 steals:** Alexis Jones at Duke, 2/2/14  
**Had 15 steals:** 16 at Duke, 2/2/14  
**Had 20 steals:** 24, Georgetown, 1/29/00

### TURNOVERS

**Player committed 10 turnovers:** Samantha Logic (11) at Iowa, 3/26/13  
**Committed 20 turnovers or more and won:** 24, Connecticut, 12/6/14  
**Committed 25 turnovers or more:** see 30 turnovers  
**Committed 30 turnovers or more:** 31 vs. Valparaiso, 12/4/16  
**Committed 35 turnovers or more:** 35, Connecticut, 3/4/13  
**Committed 40 turnovers or more:** 46, Akron, 11/11/11  
**Committed 5 turnovers or fewer:** 5 at Villanova, 1/25/03  
**Committed 10 turnovers or fewer:** 9, at Tennessee, 1/16/17

### MISCELLANEOUS

**Led team in points/rebounds/assists:** Paris Kea (21p/9r/3a), at North Carolina, 1/22/17  
**Four-point play:** Tori Jankoska (2:44, 1st quarter) at Michigan State, 12/20/16  
**Hit "final minute" game-winning shot:** Jamie Nared (0:11), Tennessee, 1/16/17  
**Played every minute:** Breyana Mason (40), Virginia, 1/29/17  
**Played more than 40 minutes:** Monique Billings (42) and Nirra Fields (41), UCLA, 11/28/15 (@ Freeport, Bahamas)  
**Rallied from 10-point deficit to win:** Tennessee, 1/16/17 (ND led by 15 in the second quarter and 62-52 in the fourth quarter, Tennessee won, 71-69)  
**Led ND by 10 or more at halftime:** 11, vs. Stanford, 3/25/16 (@ Lexington, Ky.)  
**Led ND by 15 or more at halftime:** 20 at Miami (40-20), 1/8/15  
**Led ND by 25 or more points:** 25 by Baylor (75-50 at 4:56 of 2nd half), 4/3/12 (@ Denver, Colo.)

## Scoring Margins - The Last Time...

**ND won by 30-plus points:** 32 — at ND 86, Pittsburgh 54, 1/12/17  
**ND won by 30-plus points at home:** 32 — at ND 86, Pittsburgh 54, 1/12/17  
**ND won by 30-plus points on the road:** 34 — ND 86, at Wake Forest 52, 2/18/15  
**ND won by 30-plus points at a neutral site:** 40 — ND 91, UL-Lafayette 51, 11/22/16 (@ Houston, Texas)  
**ND won by 40-plus points:** see 60 points  
**ND won by 50-plus points:** see 60 points  
**ND won by 60-plus points:** 60 — at ND 114, Valparaiso 54, 12/4/16  
**ND won by 70-plus points:** 75 — at ND 104, Holy Cross 29, 11/23/14  
  
**ND lost by 10-19 points:** 11 — Connecticut 72, at ND 61, 12/7/16  
**ND lost by 10-19 at home:** 11 — Connecticut 72, at ND 61, 12/7/16  
**ND lost by 10-19 points on the road:** 10 — at Connecticut 91, ND 81, 12/5/15  
**ND lost by 10-19 points at a neutral site:** 10 — Connecticut 63, ND 53, 4/7/15 (@ Tampa, Fla.)  
**ND lost by 20-29 points:** 21 — Connecticut 79, ND 58, 4/8/14 (@ Nashville, Tenn.)  
**ND lost by 20-29 points at home:** 25 — Connecticut 76, at ND 51, 3/1/10  
**ND lost by 20-29 points on the road:** 21 — at Connecticut 78, ND 57, 2/19/11  
**ND lost by 30-plus points:** 39 — at Tennessee 89, ND 50, 3/17/02

2016-17 Notre Dame Women's Basketball Game Notes

Game 1: #1/2 Notre Dame 107, Central Mich. 47

Nov. 11, 2016 • Purcell Pavilion at the Joyce Center

Central Michigan 47 • 0-1. Player stats including Tinara MOORE, Jewel COTTON, Presley HUDSON, etc.

1st - FG %: 3-13 23.1%, 2nd: 5-20 25.0%, 3rd: 3-13 23.1%, 4th: 6-17 35.3%, Game: 17-63 27.0%, Deadball Rebounds 3

Notre Dame 107 • 1-0

Player stats including Brianna Turner, Kathryn Westbeld, Mychal Johnson, etc.

1st - FG %: 13-17 76.5%, 2nd: 9-14 64.3%, 3rd: 10-19 52.6%, 4th: 8-15 53.3%, Game: 40-65 61.5%, Deadball Rebounds 2

Officials: Mark Berger, Erika Herriman-Camarota, Thurman leggs Jr. Technical fouls: Central Michigan-None. Notre Dame-None.

Score by periods table with columns for 1st, 2nd, 3rd, 4th, Total and points in Paint, In, Off, 2nd, Fast, Bench.

Score tied - 0 times. Lead changed - 0 times. Last FG - CMU 4th-04:03, ND 4th-00:28.

Game 2: #1/2 Notre Dame 67, Fordham 36

Nov. 14, 2016 • Purcell Pavilion at the Joyce Center

Fordham 36 • 1-1. Player stats including G'mrice DAVIS, Lauren HOLDEN, Danielle BURNS, etc.

1st - FG %: 4-12 33.3%, 2nd: 2-14 14.3%, 3rd: 4-13 30.8%, 4th: 2-13 15.4%, Game: 12-52 23.1%, Deadball Rebounds 4

Notre Dame 67 • 2-0

Player stats including Brianna Turner, Kathryn Westbeld, Marina Mabrey, etc.

1st - FG %: 8-20 40.0%, 2nd: 5-12 41.7%, 3rd: 5-16 31.3%, 4th: 7-11 63.6%, Game: 25-59 42.4%, Deadball Rebounds 4

Officials: Puulani Spurlock, Bob Enterline, Kevin Dillard. Technical fouls: Fordham-None. Notre Dame-None.

Score by periods table with columns for 1st, 2nd, 3rd, 4th, Total and points in Paint, In, Off, 2nd, Fast, Bench.

Score tied - 0 times. Lead changed - 0 times. Last FG - FOR 4th-04:49, ND 4th-03:25.

Game 3: #1 Notre Dame 71, Green Bay 67

Nov. 17, 2016 • Purcell Pavilion at the Joyce Center

Green Bay 67 • 2-1. Player stats including Mehryn KRAKER, Jessica LINDSTROM, Lexi WEITZER, etc.

1st - FG %: 3-13 23.1%, 2nd: 8-12 66.7%, 3rd: 5-17 29.4%, 4th: 9-14 64.3%, Game: 25-56 44.6%, Deadball Rebounds 0

Notre Dame 71 • 3-0

Player stats including Brianna Turner, Kathryn Westbeld, Marina Mabrey, etc.

1st - FG %: 4-18 22.2%, 2nd: 9-16 56.3%, 3rd: 7-21 33.3%, 4th: 3-9 33.3%, Game: 23-64 35.9%, Deadball Rebounds 4

Officials: Tom Hallead, Maggie Tieman, Mark Berger. Technical fouls: Green Bay-None. Notre Dame-None.

Score by periods table with columns for 1st, 2nd, 3rd, 4th, Total and points in Paint, In, Off, 2nd, Fast, Bench.

Score tied - 0 times. Lead changed - 0 times. Last FG - GB 4th-00:03, ND 4th-02:32.

Game 4: #1 Notre Dame 71, #17 Washington 60

Nov. 20, 2016 • Purcell Pavilion at the Joyce Center

Washington 60 • 3-1. Player stats including Chantel Osahor, Katie Collier, Natalie Romeo, etc.

1st - FG %: 3-16 18.8%, 2nd: 4-15 26.7%, 3rd: 7-15 46.7%, 4th: 7-11 63.6%, Game: 21-57 36.8%, Deadball Rebounds 1

Notre Dame 71 • 4-0

Player stats including Brianna Turner, Kathryn Westbeld, Marina Mabrey, etc.

1st - FG %: 11-19 57.9%, 2nd: 6-18 33.3%, 3rd: 6-16 37.5%, 4th: 5-14 35.7%, Game: 28-67 41.8%, Deadball Rebounds 6

Officials: Cameron Inouye, Billy Smith, Karen Preato. Technical fouls: Washington-None. Notre Dame-None.

Score by periods table with columns for 1st, 2nd, 3rd, 4th, Total and points in Paint, In, Off, 2nd, Fast, Bench.

Score tied - 0 times. Lead changed - 0 times. Last FG - WASH 4th-00:15, ND 4th-01:45.













## Notre Dame Team Superlatives

Category	High	Opponent	Date	Low	Opponent	Date
Points:	114	Valparaiso	Dec. 4, 2016	55	at Georgia Tech	Jan. 2, 2017
Field Goals Made:	48	Valparaiso	Dec. 4, 2016	23	Green Bay	Nov. 17, 2016
				23	at Georgia Tech	Jan. 2, 2017
Field Goal Attempts:	75	Valparaiso	Dec. 4, 2016	52	Pittsburgh	Jan. 12, 2017
				52	Virginia	Jan. 29, 2017
Field Goal Percentage:	.640 (48-75)	Valparaiso	Dec. 4, 2016	.359 (23-64)	Green Bay	Nov. 17, 2016
3-Point FG Made:	12	Central Michigan	Nov. 11, 2016	1	Fordham	Nov. 14, 2016
				1	at Chattanooga	Dec. 27, 2016
3-Point FG Attempts:	22	Central Michigan	Nov. 11, 2016	4	at Chattanooga	Dec. 27, 2016
	22	Valparaiso	Dec. 4, 2016			
3-Pt FG Percentage::	.625 (10-16)	Wake Forest	Jan. 5, 2017	.125 (1-8)	Fordham	Nov. 14, 2016
Free Throws Made:	27	Pittsburgh	Jan. 12, 2017	4	UConn	Dec. 7, 2016
				4	at NC State	Dec. 29, 2016
				4	Wake Forest	Jan. 5, 2017
Free Throws Attempts:	32	Virginia	Jan. 29, 2017	7	Wake Forest	Jan. 5, 2017
Free Throw Percentage:	.909 (10-11)	at North Carolina	Jan. 22, 2017	.364 (4-11)	at NC State	Dec. 29, 2016
Rebounds:	60	vs. UL-Lafayette	Nov. 22, 2016	27	at Toledo	Dec. 18, 2016
				27	at Boston College	Jan. 19, 2017
Assists:	29	Central Michigan	Nov. 11, 2016	11	Fordham	Nov. 14, 2016
	29	Valparaiso	Dec. 4, 2016			
Steals:	19	Valparaiso	Dec. 4, 2016	2	at Michigan State	Dec. 20, 2016
Blocked Shots:	9	at Chattanooga	Dec. 27, 2016	2	Washington	Nov. 20, 2016
				2	at Iowa	Nov. 30, 2016
				2	at NC State	Dec. 29, 2016
				2	Duke	Jan. 26, 2017
Turnovers:	21	vs. UL-Lafayette	Nov. 22, 2016	10	Washington	Nov. 20, 2016
	21	at Miami	Jan. 8, 2017	10	at Michigan State	Dec. 20, 2016
Fouls:	22	at Iowa	Nov. 30, 2016	10	at North Carolina	Jan. 22, 2017

## Opponent Team Superlatives

Category	High	Opponent	Date	Low	Opponent	Date
Points:	74	Virginia	Jan. 29, 2017	36	Fordham	Nov. 14, 2016
Field Goals Made:	29	Virginia	Jan. 29, 2017	12	Fordham	Nov. 14, 2016
Field Goal Attempts:	71	Virginia	Jan. 29, 2017	48	TCU	Nov. 26, 2016
Field Goal Percentage:	.500 (27-54)	at Boston College	Jan. 19, 2017	.231 (12-52)	Fordham	Nov. 14, 2016
3-Point FG Made:	12	Green Bay	Nov. 17, 2016	1	UConn	Dec. 7, 2016
				1	at Georgia Tech	Jan. 2, 2017
3-Point FG Attempts:	33	Central Michigan	Nov. 11, 2016	8	at Georgia Tech	Jan. 2, 2017
3-Pt FG Percentage::	.556 (10-18)	Wake Forest	Jan. 5, 2017	.105 (2-19)	Fordham	Nov. 14, 2016
Free Throws Made:	19	UConn	Dec. 7, 2016	1	Valparaiso	Dec. 4, 2016
Free Throws Attempts:	22	Tennessee	Jan. 16, 2017	1	Valparaiso	Dec. 4, 2016
Free Throw Percentage (Min 2):	.950 (19-20)	UConn	Dec. 7, 2016	.300 (3-10)	at Chattanooga	Dec. 27, 2016
Rebounds:	40	at Iowa	Nov. 30, 2016	19	Pittsburgh	Jan. 12, 2017
	40	at Toledo	Dec. 18, 2016			
	40	at Georgia Tech	Jan. 2, 2017			
Assists:	21	at Toledo	Dec. 18, 2016	5	at Georgia Tech	Jan. 2, 2017
Steals:	12	at Miami	Jan. 8, 2017	2	at Michigan State	Dec. 20, 2016
Blocked Shots:	6	Green Bay	Nov. 17, 2016	0	Valparaiso	Dec. 4, 2016
	6	Pittsburgh	Jan. 12, 2017	0	at Boston College	Jan. 19, 2017
	6	Duke	Jan. 26, 2017			
Turnovers:	31	Valparaiso	Dec. 4, 2016	9	Tennessee	Jan. 16, 2017
Fouls:	25	Fordham	Nov. 14, 2016	10	at North Carolina	Jan. 22, 2017
	25	at DePaul	Dec. 10, 2016	10	at Virginia Tech	Feb. 2, 2017

## Notre Dame Individual Superlatives

Category	Stat	Player	Opponent	Date
Points:	30	Arike Ogunbowale	Central Michigan	Nov. 11, 2016
Field Goals Made:	12	Arike Ogunbowale	Central Michigan	Nov. 11, 2016
Field Goal Attempts:	18	Arike Ogunbowale	at Georgia Tech	Jan. 2, 2017
FG Pct. (Min. 5 made):	1.000 (5-5)	Lindsay Allen	Fordham	Nov. 14, 2016
FG Pct. (Min. 10 made):	.923 (12-13)	Arike Ogunbowale	Central Michigan	Nov. 11, 2016
3-Point FG Made:	5	Arike Ogunbowale	Central Michigan	Nov. 11, 2016
	5	Arike Ogunbowale	TCU	Nov. 26, 2016
	5	Arike Ogunbowale	Pittsburgh	Jan. 12, 2017
3-Point FG Attempts:	11	Marina Mabrey	Virginia	Jan. 29, 2017
3-Pt FG Pct. (Min. 3 made):	1.000 (5-5)	Arike Ogunbowale	Central Michigan	Nov. 11, 2016
	1.000 (4-4)	Arike Ogunbowale	Virginia	Jan. 29, 2017
Free Throws Made:	10	Marina Mabrey	Virginia	Jan. 29, 2017
Free Throws Attempts:	12	Marina Mabrey	Virginia	Jan. 29, 2017
FT Pct.:	1.000 (7-7)	Jackie Young	Pittsburgh	Jan. 12, 2017
Rebounds:	12	Brianna Turner	5x, last vs. Duke	Jan. 26, 2017
Assists:	12	Lindsay Allen	TCU	Nov. 26, 2016
	12	Lindsay Allen	at Chattanooga	Dec. 27, 2016
	12	Lindsay Allen	Duke	Jan. 26, 2017
Steals:	6	Jackie Young	Valparaiso	Dec. 4, 2016
Blocked Shots:	6	Brianna Turner	at Chattanooga	Dec. 27, 2016
	6	Brianna Turner	at Georgia Tech	Jan. 2, 2017
	6	Brianna Turner	at North Carolina	Jan. 22, 2017
Turnovers:	7	Kathryn Westbeld	UConn	Dec. 7, 2016
Minutes:	40	Lindsay Allen	8x, last at vs. Virginia	Jan. 29, 2017

## Opponent Individual Superlatives

Category	Stat	Player	Opponent	Date
Points:	24	Queen Alford	Chattanooga	Dec. 27, 2016
Field Goals Made:	10	Paris Kea	at North Carolina	Jan. 22, 2017
Field Goal Attempts:	23	Jaylyn Gordon	UL-Lafayette	Nov. 22, 2016
	23	Jessica January	DePaul	Dec. 10, 2016
FG Pct. (Min. 5 made):	.778 (7-9)	Megan Gustafson	Iowa	Nov. 30, 2016
	.778 (7-9)	Napheesa Collier	UConn	Dec. 7, 2016
3-Point FG Made:	5	Aleah Swary	Central Michigan	Nov. 11, 2016
	5	Jay-Ann Bravo-Harriott	Toledo	Dec. 18, 2016
	5	Alayna Gribble	Pittsburgh	Jan. 12, 2017
3-Point FG Attempts:	12	Alayna Gribble	Pittsburgh	Jan. 12, 2017
3-Pt FG Pct.:	1.000 (2-2)	Jada Woody	Toledo	Dec. 18, 2016
	1.000 (2-2)	Victoria Gaines	at Michigan State	Dec. 20, 2016
	1.000 (2-2)	Miah Spencer	at NC State	Dec. 29, 2016
	1.000 (2-2)	Mone Jones	Virginia	Jan. 29, 2017
Free Throws Made:	6	Kelsey Plum	Washington	Nov. 20, 2016
	6	Jada Butts	TCU	Nov. 26, 2016
	6	Napheesa Collier	UConn	Dec. 7, 2016
Free Throws Attempts:	8	Jessica January	DePaul	Dec. 10, 2016
	8	Queen Alford	Chattanooga	Dec. 27, 2016
FT Pct. (Min 6 made):	1.000 (6-6)	Jada Butts	TCU	Nov. 26, 2016
	1.000 (6-6)	Napheesa Collier	UConn	Dec. 7, 2016
Rebounds:	16	Jessica Lindstrom	Green Bay	Nov. 17, 2016
Assists:	7	Chanette Hicks	at Virginia Tech	Feb. 2, 2017
Steals:	5	Gabby Williams	UConn	Dec. 7, 2016
	5	J'Kyra Brown	Virginia	Jan. 29, 2017
Blocked Shots:	3	Jenna Allen	Michigan State	Dec. 20, 2016
	3	Diamond DeShields	Tennessee	Jan. 16, 2017
	3	Oderah Chidom	Duke	Jan. 26, 2017
Turnovers:	9	Mikaela Boyd	Toledo	Dec. 18, 2016
Minutes:	40	7x, last by Breyana Mason	Virginia	Jan. 29, 2017

## Irish Starting Lineups

Date	Opp.	G	G	G/F	F	F
11/11	CMU	Allen	Ogunbowale	Johnson	Westbeld	Turner
11/14	Fordham	Allen	Ogunbowale	Mabrey	Westbeld	Turner
11/17	Green Bay	Allen	Ogunbowale	Mabrey	Westbeld	Turner
11/20	Wash.	Allen	Ogunbowale	Mabrey	Westbeld	Turner
11/22	v. ULL	Allen	Ogunbowale	Mabrey	Westbeld	Turner
11/26	TCU	Allen	Ogunbowale	Mabrey	Westbeld	Turner
11/30	@Iowa	Allen	Ogunbowale	Mabrey	Westbeld	Turner
12/4	Valpo	Allen	Ogunbowale	Mabrey	Westbeld	Turner
12/7	UConn	Allen	Ogunbowale	Mabrey	Westbeld	Turner
12/10	@DePaul	Allen	Ogunbowale	Mabrey	Westbeld	Turner
12/18	@Toledo	Allen	Ogunbowale	Mabrey	Westbeld	Turner
12/20	@MSU	Allen	Johnson	Mabrey	Westbeld	Turner
12/27	@UTC	Allen	Ogunbowale	Mabrey	Westbeld	Turner
12/29	@NCSCU	Allen	Ogunbowale	Mabrey	Westbeld	Turner
1/2	@GT	Allen	Ogunbowale	Mabrey	Westbeld	Turner
1/5	WF	Allen	Ogunbowale	Mabrey	Westbeld	Turner
1/8	@Miami	Allen	Ogunbowale	Mabrey	Westbeld	Turner
1/12	Pitt	Allen	Ogunbowale	Mabrey	Westbeld	Turner
1/16	@Tenn.	Allen	Ogunbowale	Mabrey	Westbeld	Turner
1/19	@BC	Allen	Ogunbowale	Mabrey	Boley	Turner
1/22	@UNC	Allen	Ogunbowale	Mabrey	Johnson	Turner
1/26	Duke	Allen	Ogunbowale	Mabrey	Westbeld	Turner
1/29	UVa	Allen	Ogunbowale	Mabrey	Boley	Turner
2/2	@VT	Allen	Ogunbowale	Mabrey	Boley	Turner

### Season/Career Start Totals

Player	2016-17	Career	Streak
Lindsay Allen	24	135	136
Brianna Turner	24	87	49
Marina Mabrey	23	24	23
Arike Ogunbowale	23	22	12
Kathryn Westbeld	20	53	0
Mychal Johnson	3	3	0
Erin Boley	3	3	2

### Starting Lineup Combinations

Players	Games	Rec.
Allen, Ogunbowale, Mabrey, Westbeld, Turner	18	15-3
Allen, Ogunbowale, Mabrey, Boley, Turner	3	3-0
Allen, Ogunbowale, Johnson, Westbeld, Turner	1	1-0
Allen, Ogunbowale, Johnson, Mabrey, Turner	1	1-0
Allen, Johnson, Mabrey, Westbeld, Turner	1	1-0

### Record When Starting

Player	2016-17	Career
Lindsay Allen	21-3	127-9
Brianna Turner	21-3	81-7
Marina Mabrey	20-3	22-3
Arike Ogunbowale	20-3	20-3
Kathryn Westbeld	17-3	48-5
Mychal Johnson	3-0	3-0
Erin Boley	3-0	3-0



# MARINA MABREY

GUARD | 5-11 | SOPHOMORE | BELMAR, N.J. | MANASQUAN

# 3

### GAMES WITH ...

	Season	Career
Double Figure Points	14	35
20-Plus Points	3	4
30-Plus Points	0	0
10-Plus Rebounds	0	1
10-Plus Assists	0	1
Double-Double	0	1

### NOTABLES

#### HONORS AND AWARDS:

- 2016 ACC All-Freshman Team
- 2016 ACC All-Academic Team
- 2015 Junkanoo Jam All-Tournament Team

#### 2016-17 SEASON:

- Played a career-high 36 minutes and fell one point shy of matching her career high (27) in the team's win over Virginia on 1/29/17.
- Recorded her 500th career point on 12/18/16 at Toledo, where she scored 19 points and collected six rebounds.
- Has made 23 starts and has averaged 13.5 points and 3.4 rebounds.
- Scored a season-high 27 points on 11/22/16 versus Louisiana-Lafayette.

#### 2015-16 SEASON:

- Played in all 35 games, averaging 10.7 points and 1.5 steals per game.

### 2016-17 GAME-BY-GAME

	Opponent	Min	FG-A	3FG-A	FT-A	O-D-R	PF	A	TO	B	S	Pts
11/11	Central Mich.	26	4-8	3-7	6-7	1-2-3	2	5	2	1	1	17
11/14	·Fordham	18	2-9	0-3	3-3	1-1-2	2	0	2	0	0	7
11/17	·Green Bay	21	4-11	1-5	4-4	3-1-4	0	3	2	1	1	13
11/20	·Washington	14	2-6	0-1	0-0	2-0-2	2	2	1	0	4	4
11/22	·vs. UL-Lafayette	25	10-15	4-7	3-3	2-1-3	2	3	2	0	3	27
11/26	·TCU	28	6-13	3-7	2-2	3-2-5	2	2	1	0	0	17
11/30	·at Iowa	23	4-10	1-3	0-0	2-2-4	3	2	3	1	5	9
12/04	·Valparaiso	26	7-11	1-4	1-2	0-1-1	1	4	2	1	0	1
12/07	·Connecticut	18	1-8	0-4	0-0	1-1-2	3	1	1	0	0	2
12/10	·at DePaul	29	1-6	0-1	5-6	3-3-6	2	4	2	0	2	7
12/18	·at Toledo	30	8-12	2-3	1-1	1-5-6	4	3	5	2	1	19
12/20	·at Michigan St.	33	7-15	3-6	2-2	1-4-5	1	5	0	1	1	19
12/27	·at Chattanooga	13	1-2	0-1	0-0	1-0-1	0	2	1	0	1	2
12/29	·at NC State*	33	8-14	4-8	2-3	3-2-5	4	4	2	1	0	22
01/02	·at Ga. Tech*	21	3-9	1-4	0-0	0-1-1	1	4	1	0	0	7
01/05	·Wake Forest*	23	5-11	4-6	0-0	0-3-3	1	1	1	0	1	14
01/08	·at Miami*	33	5-11	2-7	3-4	1-4-5	1	4	4	0	4	15
01/12	·Pittsburgh*	18	2-4	1-2	2-2	0-5-5	3	2	2	1	1	7
01/16	·at Tennessee	30	7-13	3-5	0-0	0-4-4	1	1	0	1	0	17
01/19	·at BC*	24	8-10	3-4	2-2	0-3-3	2	1	1	0	2	21
01/22	·at UNC*	30	5-11	2-7	1-1	0-4-4	1	4	0	1	1	13
01/26	·Duke*	35	4-15	1-8	0-0	1-4-5	1	1	1	0	2	9
01/29	·Virginia*	36	6-13	4-11	10-12	0-2-2	1	2	1	0	1	26
02/02	·at Va. Tech*	26	5-10	3-6	0-0	0-1-1	4	1	1	1	2	13
02/06	Louisville*											
02/12	Georgia Tech*											
02/16	at Clemson*											
02/19	at Syracuse*											
02/23	BC*											
02/26	Florida State*											

### CAREER AND SEASON HIGHS

Points	
Season	27, vs. UL-Lafayette (11/22/16)
Career	27, vs. UL-Lafayette (11/22/16)
Rebounds	
Season	6, 2x, at Toledo (12/18/16)
Career	6, 5x, at Toledo (12/18/16)
Assists	
Season	5, 2x, at Michigan State (12/20/16)
Career	10, at Valparaiso (11/23/15)
Steals	
Season	5, at Iowa (11/30/16)
Career	12, at Valparaiso (11/23/15)
Blocks	
Season	2, at Toledo (12/18/16)
Career	2, 4x, at Toledo (12/18/16)
Field Goals Made	
Season	10, vs. UL-Lafayette (11/22/16)
Career	10, 2x, vs. UL-Lafayette (11/22/16)
3-Point FGs Made	
Season	4, 4x, vs. Virginia (01/29/17)
Career	4, 4x, vs. Virginia (01/29/17)
Free Throws Made	
Season	10, vs. Virginia (01/29/17)
Career	10, vs. Virginia (01/29/17)
Minutes	
Season	36, vs. Virginia (01/29/17)
Career	36, vs. Virginia (01/29/17)

### CAREER STATISTICS

SEASON	GP-GS	MIN/AVG	FG-FGA	PCT	3FG-FGA	PCT	FT-FTA	PCT	ORB	DRB	REB	AVG	PF	DQ	AST	TO	BLK	STL	PTS	AVG
2015-16	35-2	662/18.9	127-247	.514	34-75	.453	85-104	.817	22	76	98	2.8	71	0	69	70	12	53	373	10.7
2016-17	24-23	613/25.5	115-247	.466	46-120	.383	47-54	.870	26	56	82	3.4	44	0	61	38	12	33	323	13.5
<b>TOTAL</b>	<b>59-25</b>	<b>1,275/21.6</b>	<b>242-494</b>	<b>.490</b>	<b>80-195</b>	<b>.410</b>	<b>132-158</b>	<b>.835</b>	<b>48</b>	<b>132</b>	<b>180</b>	<b>3.1</b>	<b>115</b>	<b>0</b>	<b>130</b>	<b>118</b>	<b>24</b>	<b>86</b>	<b>696</b>	<b>11.8</b>



# JACKIE YOUNG

GUARD | 6-0 | FRESHMAN | PRINCETON, IND. | PRINCETON COMMUNITY

# 5

### GAMES WITH ...

	Season	Career
Double Figure Points	6	6
20-Plus Points	1	1
30-Plus Points	0	0
5-Plus Rebounds	8	8
5-Plus Assists	0	0
Double-Double	0	0

### NOTABLES

#### HONORS AND AWARDS:

- ACC Rookie of the Week (December 5, 2016)
- 2016 Naismith National Player of the Year
- 2016 McDonald's All-American
- 2016 Indiana Gatorade Player of the Year
- 2016 IBCA Senior Supreme All-State
- 2016 IndyStar Miss Basketball

#### 2016-17 SEASON:

- Was out of action due to an ankle injury from 12/10-12/18/16.
- Was named Atlantic Coast Conference Rookie of the Week on 12/05/16, following her break-through game versus Valparaiso (20 points, six steals, five rebounds and three assists). She also tallied five points and three rebounds in the team's win at Iowa on 11/30/16.
- Scored a career-high 20 points with six steals and five rebounds vs. Valparaiso on 12/04/16. She became the first Irish player to score 20 points off the bench since Arike Ogunbowale had 21 at TCU on 12/12/15.
- Scored three points and recorded seven rebounds in her college debut against Green Bay on 11/17/16.

#### HIGH SCHOOL:

- Averaged 34 points, nine rebounds and five assists as a senior at Princeton Community High School.

### 2016-17 GAME-BY-GAME

Opponent	Min	FG-A	3FG-A	FT-A	O-D-R	PF	A	TO	B	S	Pts
11/11 Central Mich.					DNP						
11/14 Fordham					DNP						
11/17 Green Bay	15	1-4	1-1	0-0	4-3-7	1	1	1	0	0	3
11/20 Washington	21	2-5	1-3	3-4	0-2-2	1	0	1	1	0	8
11/22 vs. UL-Lafayette	21	5-8	1-1	2-4	1-5-6	1	4	2	1	0	13
11/26 TCU	25	5-11	0-2	2-2	2-3-5	4	3	3	1	0	12
11/30 at Iowa	16	2-7	0-0	1-1	1-2-3	4	0	2	0	1	5
12/04 Valparaiso	26	8-9	3-4	1-1	1-4-5	1	3	1	0	6	20
12/07 Connecticut	30	3-4	1-1	0-0	1-3-4	4	0	2	1	4	7
12/10 at DePaul					DNP						
12/18 at Toledo					DNP						
12/20 at Michigan St.	2	0-0	0-0	0-0	0-0-0	0	0	0	0	0	0
12/27 at Chattanooga	16	1-4	0-0	1-2	1-2-3	1	1	1	0	0	3
12/29 at NC State*	10	0-1	0-1	0-0	0-1-1	3	0	1	0	0	0
01/02 at Ga. Tech*	23	0-2	0-0	0-0	0-1-1	3	0	0	0	1	0
01/05 Wake Forest*	18	1-4	0-0	0-0	1-0-1	1	3	1	0	0	2
01/08 at Miami*	20	4-7	1-1	0-0	5-1-6	2	1	2	0	0	9
01/12 Pittsburgh*	25	4-9	0-1	7-7	5-3-8	1	1	3	1	2	15
01/16 at Tennessee	23	4-4	0-0	2-4	3-2-5	2	0	2	0	0	10
01/19 at BC*	21	0-4	0-0	4-4	0-1-1	1	0	0	0	1	4
01/22 at UNC*	21	3-8	0-1	4-4	4-4-8	2	0	1	0	1	10
01/26 Duke*	13	2-4	0-0	0-0	2-0-2	3	0	1	0	0	4
01/29 Virginia*	19	2-5	0-0	3-4	0-1-1	3	2	2	0	2	7
02/02 at Va. Tech*	20	2-6	0-0	0-0	2-2-4	1	2	3	0	1	4
02/06 Louisville*											
02/12 Georgia Tech*											
02/16 at Clemson*											
02/19 at Syracuse*											
02/23 BC*											
02/26 Florida State*											

### CAREER AND SEASON HIGHS

Points	Season 20, vs. Valparaiso (12/04/16) Career 20, vs. Valparaiso (12/04/16)
Rebounds	Season 8, 2x, at UNC (01/22/17) Career 8, 2x, at UNC (01/22/17)
Assists	Season 4, vs. UL-Lafayette (11/22/16) Career 4, vs. UL-Lafayette (11/22/16)
Steals	Season 6, vs. Valparaiso (12/04/16) Career 6, vs. Valparaiso (12/04/16)
Blocks	Season 1, 5x, vs. Pittsburgh (01/12/17) Career 1, 5x, vs. Pittsburgh (01/12/17)
Field Goals Made	Season 8, vs. Valparaiso (12/04/16) Career 8, vs. Valparaiso (12/04/16)
3-Point FGs Made	Season 3, vs. Valparaiso (12/04/16) Career 3, vs. Valparaiso (12/04/16)
Free Throws Made	Season 7, vs. Pittsburgh (01/12/17) Career 7, vs. Pittsburgh (01/12/17)
Minutes	Season 30, vs. Connecticut (12/07/16) Career 30, vs. Connecticut (12/07/16)

### CAREER STATISTICS

SEASON	GP-GS	MIN/AVG	FG-FGA	PCT	3FG-FGA	PCT	FT-FTA	PCT	ORB	DRB	REB	AVG	PF	DQ	AST	TO	BLK	STL	PTS	AVG
2016-17	20-0	385/19.3	49-106	.462	8-16	.500	30-37	.811	33	40	73	3.7	39	0	21	29	5	19	136	6.8
<b>TOTAL</b>	<b>20-0</b>	<b>385/19.3</b>	<b>49-106</b>	<b>.462</b>	<b>8-16</b>	<b>.500</b>	<b>30-37</b>	<b>.811</b>	<b>33</b>	<b>40</b>	<b>73</b>	<b>3.7</b>	<b>39</b>	<b>0</b>	<b>21</b>	<b>29</b>	<b>5</b>	<b>19</b>	<b>136</b>	<b>6.8</b>



# BRIANNA TURNER

FORWARD | 6-3 | JUNIOR | PEARLAND, TEXAS | MANVEL

# 11

## GAMES WITH ...

	Season	Career
Double Figure Points	20	72
20-Plus Points	4	14
30-Plus Points	0	0
10-Plus Rebounds	7	25
10-Plus Assists	0	0
Double-Double	6	20

## NOTABLES

### HONORS AND AWARDS:

- 2016 Wade Trophy Watch List
- 2016-17 AP Preseason All-American
- 2016 WBCA Coaches' All-America Team
- 2016 USBWA All-America Team
- 2016 Honda Sport Award Finalist
- 2016 Naismith Trophy Semifinalist
- Wooden Award's Midseason Top 25
- Drysdale Award Midseason Watch List

### 2016-17 SEASON:

- Recorded 20-plus points and double-doubles in back-to-back contests on 1/22-26/17.
- Has four 20-plus point games this season and 14 in her career.
- Snapped a streak of 31 consecutive games with double-figure points, including 13 straight games this season, with seven points in the team's loss at North Carolina State on 12/29/16.
- Was named Atlantic Coast Conference Player of the Week the week of December 12, 2016. She scored 30 points and collected 23 rebounds during that period.
- Recorded her 1,000th career point on 11/30/16 at Iowa. She became the 36th Irish player to accomplish the feat and second Notre Dame player this season (also Lindsay Allen on 11/17/16 vs. Green Bay).
- Scored a season-high 26 points and gathered eight rebounds on 12/18/16 at Toledo.
- Played a season-high 37 minutes at Michigan State on 12/20/16, scoring 19 points with seven rebounds.
- Recorded back-to-back double-doubles against Washington and Louisiana-Lafayette, scoring a combined 26 points and collecting 24 rebounds.

## 2016-17 GAME-BY-GAME

Opponent	Min	FG-A	3FG-A	FT-A	O-D-R	PF	A	TO	B	S	Pts
11/11 ·Central Mich.	20	5-8	0-0	2-4	2-1-3	1	1	2	0	0	12
11/14 ·Fordham	28	5-10	0-0	0-2	2-6-8	1	0	3	1	1	10
11/17 ·Green Bay	30	5-10	0-0	4-6	3-1-4	2	3	1	2	1	14
11/20 ·Washington	27	3-6	0-0	4-6	4-8-12	3	0	1	1	0	10
11/22 ·vs. UL-Lafayette	30	8-13	0-0	0-2	3-9-12	1	1	2	1	0	16
11/26 ·TCU	15	7-10	0-0	4-5	2-1-3	2	1	1	1	1	18
11/30 ·at Iowa	31	6-11	0-0	3-5	1-3-4	3	1	3	0	1	15
12/04 ·Valparaiso	19	6-11	0-0	1-2	3-1-4	3	1	1	2	0	13
12/07 ·Connecticut	36	7-14	0-0	2-2	8-4-12	2	3	0	2	1	16
12/10 ·at DePaul	26	4-8	0-0	6-7	3-8-11	2	2	4	2	0	14
12/18 ·at Toledo	30	11-13	0-0	4-7	2-6-8	1	2	3	2	1	26
12/20 ·at Michigan St.	37	7-15	0-0	5-8	2-5-7	2	1	2	5	0	19
12/27 ·at Chattanooga	28	10-13	0-0	4-8	4-1-5	1	1	1	6	0	24
12/29 ·at NC State*	30	3-8	0-0	1-4	0-3-3	5	2	2	1	0	7
01/02 ·at Ga. Tech*	27	4-7	0-0	1-4	3-8-11	2	0	1	6	4	9
01/05 ·Wake Forest*	27	7-12	0-0	1-2	1-5-6	1	4	1	2	0	15
01/08 ·at Miami*	35	3-4	0-0	1-2	2-8-10	4	2	4	0	1	7
01/12 ·Pittsburgh*	23	4-7	0-0	3-3	1-5-6	2	0	0	2	3	11
01/16 ·at Tennessee	29	5-12	0-0	0-0	4-3-7	4	0	2	3	1	10
01/19 ·at BC*	31	8-11	0-0	3-6	4-4-8	4	1	6	3	4	19
01/22 ·at UNC*	33	11-16	0-0	2-2	4-8-12	2	1	2	6	0	24
01/26 ·Duke*	37	9-15	0-0	7-8	6-6-12	2	0	1	2	2	25
01/29 ·Virginia*	26	4-7	0-0	1-3	4-4-8	3	1	2	3	1	9
02/02 ·at Va. Tech*	24	6-9	0-0	1-1	1-3-4	4	0	5	2	0	13
02/06 Louisville*											
02/12 Georgia Tech*											
02/16 at Clemson*											
02/19 at Syracuse*											
02/23 BC*											
02/26 Florida State*											

## CAREER AND SEASON HIGHS

Points	
Season	26, at Toledo (12/18/16)
Career	29, 2x, at UNC (01/15/15)
Rebounds	
Season	12, 5x, vs. Duke (01/26/17)
Career	18, at UNC (01/15/15)
Assists	
Season	4, vs. Wake Forest (01/05/17)
Career	4, vs. Wake Forest (01/05/17)
Steals	
Season	4, 2x, at Boston College (01/19/17)
Career	4, 2x, at Boston College (01/19/17)
Blocks	
Season	6, 3x, at UNC (01/22/17)
Career	7, 3x, vs. Louisville (02/23/15)
Field Goals Made	
Season	11, 2x, at UNC (01/22/17)
Career	13, vs. UMass Lowell (11/14/14)
3-Point FGs Made	
Season	-
Career	-
Free Throws Made	
Season	7, vs. Duke (01/26/17)
Career	9, at UNC (01/15/15)
Minutes	
Season	37, 2x, vs. Duke (01/26/17)
Career	38, at Duke (02/01/16)

## CAREER STATISTICS

SEASON	GP-GS	MIN/AVG	FG-FGA	PCT	3FG-FGA	PCT	FT-FTA	PCT	ORB	DRB	REB	AVG	PF	DQ	AST	TO	BLK	STL	PTS	AVG
2014-15	36-35	921/25.6	202-310	.652	0-0	.000	92-152	.605	103	180	283	7.9	86	1	25	75	89	39	496	13.8
2015-16	29-29	783/27.0	169-285	.593	0-0	.000	85-133	.639	66	146	212	7.3	63	1	27	41	88	24	423	14.6
2016-17	24-24	679/28.3	148-250	.592	0-0	.000	60-99	.606	69	111	180	7.5	57	1	28	50	55	22	356	14.8
<b>TOTAL</b>	<b>89-88</b>	<b>2,383/26.8</b>	<b>519-845</b>	<b>.614</b>	<b>0-0</b>	<b>.000</b>	<b>237-384</b>	<b>.617</b>	<b>238</b>	<b>437</b>	<b>675</b>	<b>7.6</b>	<b>206</b>	<b>3</b>	<b>80</b>	<b>166</b>	<b>232</b>	<b>85</b>	<b>1,275</b>	<b>14.3</b>



# MYCHAL JOHNSON

GUARD | 5-7 | JUNIOR | HUNTINGTON, W.VA. | HUNTINGTON ST. JOSEPH

# 14

## GAMES WITH ...

	Season	Career
5-Point Games	4	16
Double Figure Points	1	5
20-Plus Points	0	0
5-Plus Rebounds	1	3
10-Plus Rebounds	0	0
5-Plus Assists	1	2

## NOTABLES

### 2016-17 SEASON:

- Made her third start of the season at UNC, her first start since the Michigan State game on 12/20/16.
- Played a career-high 31 minutes at DePaul on 12/10/16, scoring a season-high 10 points.

### 2015-16 SEASON:

- Appeared in 31 games as a sophomore, averaging 2.3 points and 1.2 rebounds per game.

## 2016-17 GAME-BY-GAME

Opponent	Min	FG-A	3FG-A	FT-A	O-D-R	PF	A	TO	B	S	Pts
11/11 -Central Mich.	27	2-4	1-2	2-2	0-2-2	3	4	0	1	4	7
11/14 Fordham	23	1-2	0-1	0-0	0-1-1	3	4	1	0	1	2
11/17 Green Bay	20	1-2	1-1	2-2	0-0-0	3	0	0	0	0	5
11/20 Washington	12	0-1	0-1	0-0	0-1-1	1	0	0	0	1	0
11/22 vs. UL-Lafayette	21	1-1	0-0	0-0	0-4-4	0	1	2	1	3	2
11/26 TCU	17	0-0	0-0	0-0	0-1-1	1	0	1	0	0	0
11/30 at Iowa	17	0-1	0-1	0-0	0-2-2	0	0	0	0	2	0
12/04 Valparaiso	25	2-4	2-4	0-0	2-4-6	0	4	3	0	1	6
12/07 Connecticut	12	1-3	1-2	0-0	0-1-1	0	0	1	0	1	3
12/10 at DePaul	31	4-7	2-4	0-0	0-1-1	1	1	0	0	1	10
12/18 at Toledo	29	1-3	0-0	0-0	0-0-0	3	3	1	0	3	2
12/20 -at Michigan St.	28	1-2	0-1	1-1	0-0-0	2	5	2	0	0	3
12/27 at Chattanooga	23	0-1	0-1	0-0	0-3-3	4	0	1	0	1	0
12/29 at NC State*	19	1-3	0-1	0-0	0-2-2	1	0	2	0	3	2
01/02 at Ga. Tech*	14	0-1	0-0	2-2	0-1-1	2	0	1	0	1	2
01/05 Wake Forest*	16	1-2	0-1	0-0	0-0-0	4	2	1	0	1	2
01/08 at Miami*	10	0-0	0-0	0-0	0-1-1	3	0	0	0	1	0
01/12 Pittsburgh*	10	0-1	0-1	2-2	0-0-0	0	0	2	0	0	2
01/16 at Tennessee	2	0-0	0-0	0-0	0-0-0	1	0	0	0	0	0
01/19 at BC*	22	0-1	0-0	0-0	1-1-2	2	3	1	0	0	0
01/22 -at UNC*	7	0-1	0-1	0-0	0-0-0	0	1	1	0	2	0
01/26 Duke*											DNP
01/29 Virginia*											DNP
02/02 at Va. Tech*											DNP
02/06 Louisville*											
02/12 Georgia Tech*											
02/16 at Clemson*											
02/19 at Syracuse*											
02/23 BC*											
02/26 Florida State*											

## CAREER AND SEASON HIGHS

Points	Rebounds	Assists	Steals	Blocks	Field Goals Made	3-Point FGs Made	Free Throws Made	Minutes
Season: 10, at DePaul (12/10/16)	Season: 6, vs. Valparaiso (12/04/16)	Season: 5, at Michigan State (12/20/16)	Season: 4, vs. Central Michigan (11/11/16)	Season: 1, 2x, vs. UL-Lafayette (11/22/16)	Season: 4, at DePaul (12/10/16)	Season: 2, 2x, at DePaul (12/10/16)	Season: 2, 4x, vs. Pittsburgh (01/12/17)	Season: 31, at DePaul (12/10/16)
Career: 17, vs. Chattanooga (11/21/14)	Career: 8, vs. Syracuse (01/21/16)	Career: 7, vs. Quinnipiac (11/25/14)	Career: 4, 2x, vs. Central Mich. (11/11/16)	Career: 2, vs. Miami (02/14/16)	Career: 6, vs. Chattanooga (11/21/14)	Career: 5, vs. Chattanooga (11/21/14)	Career: 4, vs. Holy Cross (11/23/14)	Career: 31, at DePaul (12/10/16)

## CAREER STATISTICS

SEASON	GP-GS	MIN/AVG	FG-FGA	PCT	3FG-FGA	PCT	FT-FTA	PCT	ORB	DRB	REB	AVG	PF	DQ	AST	TO	BLK	STL	PTS	AVG
2014-15	28-0	320/11.4	28-84	.333	11-34	.324	20-29	.690	7	25	32	1.1	33	0	25	18	4	14	87	3.1
2015-16	31-0	371/12.0	16-53	.302	9-28	.321	29-43	.674	5	33	38	1.2	40	0	19	18	4	16	70	2.3
2016-17	21-3	385/18.3	16-40	.400	7-22	.318	9-9	1.000	3	25	28	1.3	34	0	28	20	2	26	48	2.3
<b>TOTAL</b>	<b>80-3</b>	<b>1,076/13.5</b>	<b>60-177</b>	<b>.339</b>	<b>27-84</b>	<b>.321</b>	<b>58-81</b>	<b>.716</b>	<b>15</b>	<b>83</b>	<b>98</b>	<b>1.2</b>	<b>107</b>	<b>0</b>	<b>72</b>	<b>56</b>	<b>10</b>	<b>56</b>	<b>205</b>	<b>2.6</b>





# LINDSAY ALLEN

GUARD | 5-8 | SENIOR | MITCHELLVILLE, MD. | ST. JOHN'S COLLEGE

# 15

### GAMES WITH ...

	Season	Career
Double-Figure Points	11	52
20-Plus Points	0	7
5-Rebound Games	15	42
5-Assist Games	19	85
Double-Figure Assists	6	8
5-5-5 Games	12	32
Triple Doubles	1	1

### NOTABLES

#### HONORS AND AWARDS:

- 2016 Wade Trophy Watch List
- 2016-17 Nancy Lieberman Award Watch List
- 2016 Preseason WNIT All-Tournament Team
- 2016 Nancy Lieberman Award Finalist
- 2016 Naismith Trophy Midseason Top 30 List
- Senior CLASS Award Candidate
- WBCA Coaches' All-America Team Finalist
- Two-time team captain (2015-16 & 2016-17)
- Wooden Award's Midseason Top 25

#### 2016-17 SEASON:

- Ranks first in the ACC and third in the country with a 3.49 assist/turnover ratio. Her 7.7 assists per game are most in the ACC and third-most in the country.
- Her 10 assists in the game versus Virginia on 1/29/17 moved her to third place all-time on the career assist chart for Notre Dame and the ACC. Her third assist moved her past Niele Ivey in the record book.
- Recorded her first career triple-double (previously had never finished with a double-double) with 11 points, 11 rebounds and 12 assists at Chattanooga on 12/27/16. The triple-double was the sixth in program history and the fourth consisting of points, rebounds and assists.
- Selected to the 2016 Preseason WNIT All-Tournament team after recording 13 points, five rebounds and four assists in the tournament finale versus Washington on 11/20/16.
- Scored her 1,000th point on 11/17/16 versus Green Bay and recorded her 600th assist on 11/26/16 versus TCU. She became the 35th Irish player to score 1,000 points and the first of two to do so this season (also Brianna Turner). Allen joins Skylar Diggins, Niele Ivey and Mollie Peirick as the only Irish players to score 1,000 career points and collect 600 career assists.

### 2016-17 GAME-BY-GAME

Opponent	Min	FG-A	3FG-A	FT-A	O-D-R	PF	A	TO	B	S	Pts
11/11 ·Central Mich.	19	6-8	1-2	0-0	0-5-5	0	8	0	4	13	
11/14 ·Fordham	37	5-5	0-0	3-4	2-4-6	2	5	1	0	2	13
11/17 ·Green Bay	40	1-6	0-0	6-8	0-5-5	0	8	4	0	3	8
11/20 ·Washington	40	5-12	0-1	3-6	2-3-5	2	4	2	0	1	13
11/22 ·vs. UL-Lafayette	25	1-1	0-0	0-0	1-5-6	3	9	3	0	1	2
11/26 ·TCU	32	1-3	0-0	0-0	2-2-4	1	12	2	0	3	2
11/30 ·at Iowa	37	5-13	1-2	0-0	1-5-6	2	8	1	1	5	11
12/04 ·Valparaiso	19	3-5	0-0	2-2	2-2-4	1	6	1	0	4	8
12/07 ·Connecticut	40	5-8	0-1	1-4	0-5-5	3	8	1	0	1	11
12/10 ·at DePaul	40	6-11	0-0	2-3	1-8-9	3	3	2	0	1	14
12/18 ·at Toledo	32	4-7	0-0	2-3	1-1-2	3	8	1	0	4	10
12/20 ·at Michigan St.	25	4-8	0-0	1-1	0-5-5	4	6	3	0	1	9
12/27 ·at Chattanooga	35	5-9	0-0	1-1	1-10-11	0	12	4	0	1	11
12/29 ·at NC State*	40	5-14	1-1	1-4	0-4-4	3	4	3	0	0	12
01/02 ·at Ga. Tech*	38	3-6	0-1	1-2	1-6-7	3	8	3	0	4	7
01/05 ·Wake Forest*	30	6-8	0-0	0-0	1-2-3	3	4	0	1	4	12
01/08 ·at Miami*	29	3-7	0-1	1-1	0-2-2	2	7	1	0	0	7
01/12 ·Pittsburgh*	26	1-3	0-0	0-0	0-3-3	1	7	3	0	0	2
01/16 ·at Tennessee	40	3-7	0-1	3-4	1-5-6	1	10	3	0	2	9
01/19 ·at BC*	29	5-8	2-2	0-0	0-3-3	1	6	2	1	2	12
01/22 ·at UNC*	38	2-7	0-0	1-2	1-5-6	1	11	3	0	4	5
01/26 ·Duke*	40	1-5	0-0	0-0	1-2-3	3	12	2	0	2	2
01/29 ·Virginia*	40	2-6	0-1	1-3	1-10-11	2	10	4	0	4	5
02/02 ·at Va. Tech*	38	4-7	0-1	0-0	0-7-7	1	9	4	0	2	8
02/06 Louisville*											
02/12 Georgia Tech*											
02/16 at Clemson*											
02/19 at Syracuse*											
02/23 BC*											
02/26 Florida State*											

- Gathered a career-high 12 assists on 11/26/16 versus TCU.

#### 2015-16 SEASON:

- Started all 33 games as a junior, averaging 9.3 points and a career-high 5.8 assists per game with a 2.52 assist/turnover ratio.

### CAREER AND SEASON HIGHS

Points	Rebounds	Assists	Steals	Blocks	Field Goals Made	3-Point FGs Made	Free Throws Made	Minutes
Season: 14, at DePaul (12/10/16)	Season: 11, 2x, vs. Virginia (01/29/17)	Season: 12, 3x, vs. Duke (01/26/17)	Season: 5, at Iowa (11/30/16)	Season: 1, 3x, at Boston College (01/19/17)	Season: 6, 3x, vs. Wake Forest (01/05/17)	Season: 2, at Boston College (01/19/17)	Season: 6, vs. Green Bay (11/17/16)	Season: 40, 7x, vs. Virginia (01/29/17)
Career: 28, vs. Stanford (03/27/15)	Career: 11, 2x, vs. Virginia (01/29/17)	Career: 12, 3x, vs. Duke (01/26/17)	Career: 5, 2x, at Iowa (11/30/16)	Career: 2, vs. Central Michigan (12/22/13)	Career: 10, 2x, vs. Indiana (03/21/16)	Career: 4, 2x, vs. Stanford (03/27/15)	Career: 6, 5x, vs. Green Bay (11/17/16)	Career: 40, 7x, vs. Virginia (01/29/17)

### CAREER STATISTICS

SEASON	GP-GS	MIN/AVG	FG-FGA	PCT	3FG-FGA	PCT	FT-FTA	PCT	ORB	DRB	REB	AVG	PF	DQ	AST	TO	BLK	STL	PTS	AVG
2013-14	38-38	1017/26.8	77-155	.497	15-42	.357	66-81	.815	11	79	90	2.4	81	0	150	67	9	49	235	6.2
2014-15	39-39	1211/31.1	155-297	.522	20-54	.370	76-89	.854	23	115	138	3.54	75	2	205	96	3	52	406	10.4
2015-16	35-35	1047/29.9	127-255	.498	8-30	.267	65-91	.714	21	110	131	3.7	69	0	204	81	3	45	327	9.3
2016-17	24-24	809/33.7	86-174	.494	5-14	.357	29-48	.604	19	109	128	5.3	45	0	185	53	3	55	206	8.6
<b>TOTAL</b>	<b>136-136</b>	<b>4,084/30.0</b>	<b>445-881</b>	<b>.505</b>	<b>48-140</b>	<b>.343</b>	<b>236-309</b>	<b>.764</b>	<b>74</b>	<b>413</b>	<b>487</b>	<b>3.6</b>	<b>270</b>	<b>2</b>	<b>744</b>	<b>297</b>	<b>18</b>	<b>201</b>	<b>1,174</b>	<b>8.6</b>



# ALI PATBERG

GUARD | 5-10 | SOPHOMORE | COLUMBUS, IND. | COLUMBUS NORTH

# 20

### GAMES WITH ...

	Season	Career
Double Figure Points	0	0
20-Plus Points	0	0
30-Plus Points	0	0
10-Plus Rebounds	0	0
10-Plus Assists	0	0
Double-Double	0	0

### NOTABLES

#### HONORS AND AWARDS:

- 2015 MaxPreps National High School Player of the Year
- 2015 McDonald's High School All-American

#### 2016-17 SEASON:

- Matched her career high in points with six on 1/22/17 at UNC.
- Scored her first career points with two free throws versus Pittsburgh on 1/12/17.
- After being sidelined for eight games due to illness, made her return to the court on 12/18/16 at Toledo.
- Recorded three rebounds and three assists in 14 minutes against Central Michigan in her college debut.

#### 2015-16 SEASON:

- Did not play due to injury.

### 2016-17 GAME-BY-GAME

Opponent	Min	FG-A	3FG-A	FT-A	O-D-R	PF	A	TO	B	S	Pts
11/11 Central Mich.	14	0-0	0-0	0-0	0-3-3	1	3	0	0	0	0
11/14 Fordham	7	0-0	0-0	0-0	0-1-1	2	0	0	0	1	0
11/17 Green Bay					DNP						
11/20 Washington					DNP						
11/22 vs. UL-Lafayette					DNP						
11/26 TCU					DNP						
11/30 at Iowa					DNP						
12/04 Valparaiso					DNP						
12/07 Connecticut					DNP						
12/10 at DePaul					DNP						
12/18 at Toledo	3	0-0	0-0	0-0	0-1-1	0	0	0	0	0	0
12/20 at Michigan St.	1	0-0	0-0	0-0	0-0-0	0	0	0	0	0	0
12/27 at Chattanooga	3	0-0	0-0	0-0	0-1-1	0	0	0	0	0	0
12/29 at NC State*					DNP						
01/02 at Ga. Tech*	2	0-0	0-0	0-0	0-0-0	1	0	0	0	0	0
01/05 Wake Forest*	7	0-0	0-0	0-0	1-2-3	0	1	0	0	0	0
01/08 at Miami*	11	0-0	0-0	0-2	0-0-0	2	1	2	0	0	0
01/12 Pittsburgh*	14	0-0	0-0	2-2	1-2-3	1	1	1	0	0	2
01/16 at Tennessee					DNP						
01/19 at BC*	20	2-3	0-0	2-2	0-1-1	1	2	0	0	0	6
01/22 at UNC*	20	3-5	0-0	0-0	1-1-2	1	0	1	0	2	6
01/26 Duke*	5	0-0	0-0	0-0	0-0-0	2	0	0	0	0	0
01/29 Virginia*	6	0-0	0-0	0-0	1-2-3	2	1	1	0	0	0
02/02 at Va. Tech*	10	0-0	0-0	0-0	0-1-1	0	0	0	0	0	0
02/06 Louisville*											
02/12 Georgia Tech*											
02/16 at Clemson*											
02/19 at Syracuse*											
02/23 BC*											
02/26 Florida State*											

### CAREER AND SEASON HIGHS

Points	Season	6, 2x, at UNC (01/22/17)
Career	6, 2x, at UNC (01/22/17)	
Rebounds	Season	3, 3x, vs. Pittsburgh (01/12/17)
Career	3, 3x, vs. Pittsburgh (01/12/17)	
Assists	Season	3, vs. Central Michigan (11/11/16)
Career	3, vs. Central Michigan (11/11/16)	
Steals	Season	2, at UNC (01/22/17)
Career	2, at UNC (01/22/17)	
Blocks	Season	-
Career	-	
Field Goals Made	Season	3, at UNC (01/22/17)
Career	3, at UNC (01/22/17)	
3-Point FGs Made	Season	-
Career	-	
Free Throws Made	Season	2, 2x, at Boston College (01/19/17)
Career	2, 2x, at Boston College (01/19/17)	
Minutes	Season	20, 2x, at UNC (01/22/17)
Career	20, 2x, at UNC (01/22/17)	

### CAREER STATISTICS

SEASON	GP-GS	MIN/AVG	FG-FGA	PCT	3FG-FGA	PCT	FT-FTA	PCT	ORB	DRB	REB	AVG	PF	DQ	AST	TO	BLK	STL	PTS	AVG	
2015-16	DNP - Injury																				
2016-17	14-0	123/8.8	5-8	.625	0-0	.000	4-6	.667	4	15	19	1.4	13	0	9	5	0	3	14	1.0	
<b>TOTAL</b>	<b>14-0</b>	<b>123/8.8</b>	<b>5-8</b>	<b>.625</b>	<b>0-0</b>	<b>.000</b>	<b>4-6</b>	<b>.667</b>	<b>4</b>	<b>15</b>	<b>19</b>	<b>1.4</b>	<b>13</b>	<b>0</b>	<b>9</b>	<b>5</b>	<b>0</b>	<b>3</b>	<b>14</b>	<b>1.0</b>	



# KRISTINA NELSON

FORWARD | 6-4 | SENIOR | BUFORD, GA. | BUFORD

# 21

### GAMES WITH ...

	Season	Career
Double Figure Points	1	3
20-Plus Points	0	0
30-Plus Points	0	0
5-Plus Rebounds	8	13
10-Plus Rebounds	0	0
Double-Double	0	0

### NOTABLES

#### HONORS AND AWARDS:

- 2016 ACC Academic Honor Roll

#### 2016-17 SEASON:

- Surpassed her 2015-16 rebound total (73) with four rebounds in the team's win at UNC on 1/22/17.
- Has recorded eight five-plus rebound games this season and 13 such games in her career.
- Collected a career-high nine rebounds and two steals in the team's season opener versus Central Michigan on 11/11/16.

### 2016-17 GAME-BY-GAME

Opponent	Min	FG-A	3FG-A	FT-A	O-D-R	PF	A	TO	B	S	Pts
11/11 Central Mich.	20	4-10	0-0	0-0	4-5-9	2	2	1	1	2	8
11/14 Fordham	18	3-6	0-0	3-5	2-5-7	4	1	3	1	1	9
11/17 Green Bay	9	0-5	0-0	0-0	0-1-1	2	0	2	1	0	0
11/20 Washington	16	2-7	0-0	1-2	0-6-6	3	3	1	0	0	5
11/22 vs. UL-Lafayette	13	2-3	0-0	1-2	2-3-5	5	2	6	3	1	5
11/26 TCU	15	0-4	0-0	2-2	1-1-2	3	1	1	1	1	2
11/30 at Iowa	13	2-3	0-0	0-0	1-2-3	2	0	0	0	0	4
12/04 Valparaiso	24	4-6	0-0	0-0	0-6-6	4	3	2	4	1	8
12/07 Connecticut	7	1-3	0-0	0-0	0-2-2	1	1	1	0	0	2
12/10 at DePaul	10	1-7	0-0	0-0	3-1-4	3	0	2	0	0	2
12/18 at Toledo	9	0-2	0-0	2-4	0-0-0	0	1	1	0	1	2
12/20 at Michigan St.	1	0-0	0-0	0-0	0-0-0	0	0	2	0	0	0
12/27 at Chattanooga	12	4-5	0-0	0-0	1-2-3	5	0	1	0	0	8
12/29 at NC State*	6	1-3	0-0	0-0	0-1-1	0	0	2	0	0	2
01/02 at Ga. Tech*	13	2-3	0-0	1-2	2-3-5	2	1	3	1	0	5
01/05 Wake Forest*	19	3-5	0-0	0-0	0-6-6	4	5	4	0	0	6
01/08 at Miami*	8	2-3	0-0	0-2	1-1-2	0	0	2	0	0	4
01/12 Pittsburgh*	22	3-6	0-0	7-10	5-2-7	2	0	2	0	2	13
01/16 at Tennessee	13	1-2	0-0	0-0	0-2-2	3	1	2	0	0	2
01/19 at BC*	8	1-2	0-0	0-0	0-0-0	3	1	2	0	0	2
01/22 at UNC*	7	0-2	0-0	0-0	2-2-4	0	0	1	0	0	0
01/26 Duke*	3	1-2	0-0	0-0	1-1-2	0	0	0	0	0	2
01/29 Virginia*	11	1-4	0-0	1-2	1-1-2	1	1	0	1	0	3
02/02 at Va. Tech*	2	0-0	0-0	0-0	0-0-0	0	0	0	0	0	0
02/06 Louisville*											
02/12 Georgia Tech*											
02/16 at Clemson*											
02/19 at Syracuse*											
02/23 BC*											
02/26 Florida State*											

### CAREER AND SEASON HIGHS

Points	Rebounds	Assists	Steals	Blocks	Field Goals Made	3-Point FGs Made	Free Throws Made	Minutes
Season 13, vs. Pittsburgh (01/12/17)	Season 9, vs. Central Michigan (11/11/16)	Season 5, vs. Wake Forest (01/05/17)	Season 2, 2x, vs. Pittsburgh (01/12/17)	Season 4, vs. Valparaiso (12/04/16)	Season 4, 3x, at Chattanooga (12/27/16)	Season -	Season 7 vs. Pittsburgh (01/12/17)	Season 24, vs. Valparaiso (12/04/16)
Career 13, vs. Pittsburgh (01/12/17)	Career 9, vs. Central Michigan (11/11/16)	Career 5, vs. Wake Forest (01/05/17)	Career 2, 2x, vs. Pittsburgh (01/12/17)	Career 4, vs. Valparaiso (12/04/16)	Career 5, vs. Wake Forest (02/18/16)	Career -	Career 7 vs. Pittsburgh (01/12/17)	Career 24, vs. Valparaiso (12/04/16)

### CAREER STATISTICS

SEASON	GP-GS	MIN/AVG	FG-FGA	PCT	3FG-FGA	PCT	FT-FTA	PCT	ORB	DRB	REB	AVG	PF	DQ	AST	TO	BLK	STL	PTS	AVG
2013-14	32-0	129/4.0	28-50	.560	0-0	.000	9-17	.529	9	21	30	0.94	39	1	7	17	3	1	65	2.0
2014-15	DNP-Injury																			
2015-16	31-0	259/8.4	37-75	.493	0-0	.000	13-22	.591	29	44	73	2.4	45	0	17	31	12	4	87	2.8
2016-17	24-0	279/11.6	38-93	.409	0-0	.000	18-31	.581	26	53	79	3.3	49	2	23	41	13	9	94	3.9
<b>TOTAL</b>	<b>87-0</b>	<b>667/7.7</b>	<b>103-218</b>	<b>.472</b>	<b>0-0</b>	<b>.000</b>	<b>40-70</b>	<b>.571</b>	<b>64</b>	<b>118</b>	<b>182</b>	<b>2.1</b>	<b>133</b>	<b>3</b>	<b>47</b>	<b>89</b>	<b>28</b>	<b>14</b>	<b>246</b>	<b>2.8</b>



# ERIN BOLEY

FORWARD | 6-2 | FRESHMAN | HODGENVILLE, KY. | ELIZABETHTOWN

# 22

## GAMES WITH ...

	Season	Career
5-Point Games	18	18
Double Figure Points	4	4
20-Plus Points	0	0
5-Plus Rebounds	3	3
5-Plus Assists	0	0
Double-Double	0	0

## NOTABLES

### HONORS AND AWARDS:

- 2016 McDonald's All-American
- 2016 Gatorade National Player of the Year
- Three-time Kentucky Gatorade Player of the Year

### 2016-17 SEASON:

- Made her third career start versus Virginia Tech on 2/2/17, when she scored seven points and collected four rebounds.
- Has averaged 6.2 points and averaged just 13.5 minutes of play this season.
- In the team's win at Michigan State on 12/20/16, she scored six points and collected four rebounds in just six minutes of action.
- Scored a season-high 15 points in the team's win over Valparaiso on 12/04/16.
- Scored eight points and collected two rebounds in her college debut versus Central Michigan on 11/11/16.

### HIGH SCHOOL:

- Competed in the 2015 FIBA 3x3 U18 World Championship in Hungary and guided her team to a second-place finish.
- Averaged 20.7 points, 10 rebounds and four steals as a senior at Elizabethtown High School.

## 2016-17 GAME-BY-GAME

Opponent	Min	FG-A	3FG-A	FT-A	O-D-R	PF	A	TO	B	S	Pts
11/11 Central Mich.	25	2-6	2-5	2-2	1-1-2	2	3	1	0	0	8
11/14 Fordham	17	1-6	1-4	4-4	0-1-1	0	0	2	0	0	7
11/17 Green Bay	5	0-4	0-1	0-0	1-2-3	0	0	0	0	1	0
11/20 Washington	1	0-1	0-0	0-0	0-0-0	0	0	0	0	0	0
11/22 vs. UL-Lafayette	17	3-9	0-5	1-1	2-6-8	0	1	1	0	0	8
11/26 TCU	11	3-4	3-4	1-2	0-3-3	0	0	0	0	0	10
11/30 at Iowa	7	2-4	1-3	0-0	0-4-4	1	0	0	0	0	5
12/04 Valparaiso	22	5-8	3-5	2-2	0-2-2	0	1	0	0	2	15
12/07 Connecticut	2	1-2	1-1	0-0	0-0-0	0	0	0	0	0	3
12/10 at DePaul	18	2-4	1-3	2-2	1-1-2	2	0	2	0	0	7
12/18 at Toledo	14	4-7	3-5	1-1	0-1-1	1	1	1	1	1	12
12/20 at Michigan St.	6	1-1	0-0	4-4	1-3-4	1	0	0	0	0	6
12/27 at Chattanooga	16	2-3	0-1	3-3	1-5-6	0	0	2	0	0	7
12/29 at NC State*	14	1-5	1-3	0-0	1-0-1	1	1	1	0	0	3
01/02 at Ga. Tech*	14	2-8	1-5	0-0	1-0-1	0	1	0	0	0	5
01/05 Wake Forest*	16	4-7	2-4	1-2	1-0-1	0	2	2	0	3	11
01/08 at Miami*	4	0-1	0-0	0-0	0-1-1	0	0	0	0	0	0
01/12 Pittsburgh*	17	3-7	1-3	0-0	1-2-3	2	1	1	0	0	7
01/16 at Tennessee	3	1-2	1-1	0-0	0-0-0	0	0	0	0	0	3
01/19 -at BC*	21	2-5	2-4	0-0	0-4-4	3	3	1	0	0	6
01/22 at UNC*	20	3-9	2-5	0-0	0-1-1	0	1	0	0	2	8
01/26 Duke*	14	2-5	1-2	0-0	3-3-6	1	2	2	0	0	5
01/29 -Virginia*	20	3-4	1-1	0-0	0-2-2	0	1	1	0	1	7
02/02 -at Va. Tech*	20	3-7	1-2	0-0	0-4-4	2	0	1	0	1	7
02/06 Louisville*											
02/12 Georgia Tech*											
02/16 at Clemson*											
02/19 at Syracuse*											
02/23 BC*											
02/26 Florida State*											

## CAREER AND SEASON HIGHS

Points	Rebounds	Assists	Steals	Blocks	Field Goals Made	3-Point FGs Made	Free Throws Made	Minutes
Season 15, vs. Valparaiso (12/04/16)	Season 8, vs. UL-Lafayette (11/22/16)	Season 3, 2x, at Boston College (01/19/17)	Season 3, vs. Wake Forest (01/05/17)	Season -	Season 5, vs. Valparaiso (12/04/16)	Season 3, 3x, at Toledo (12/18/16)	Season 4, 2x, at Michigan State (12/20/16)	Season 25, vs. Central Michigan (11/11/16)
Career 15, vs. Valparaiso (12/04/16)	Career 8, vs. UL-Lafayette (11/22/16)	Career 3, 2x, at Boston College (01/19/17)	Career 3, vs. Wake Forest (01/05/17)	Career -	Career 5, vs. Valparaiso (12/04/16)	Career 3, 3x, at Toledo (12/18/16)	Career 4, 2x, at Michigan State (12/20/16)	Career 25, vs. Central Michigan (11/11/16)

## CAREER STATISTICS

SEASON	GP-GS	MIN/AVG	FG-FGA	PCT	3FG-FGA	PCT	FT-FTA	PCT	ORB	DRB	REB	AVG	PF	DQ	AST	TO	BLK	STL	PTS	AVG
2016-17	24-2	324/13.5	50-119	.420	28-67	.418	21-23	.913	14	46	60	2.5	16	0	18	18	0	11	149	6.2
<b>TOTAL</b>	<b>24-2</b>	<b>324/13.5</b>	<b>50-119</b>	<b>.420</b>	<b>28-67</b>	<b>.418</b>	<b>21-23</b>	<b>.913</b>	<b>14</b>	<b>46</b>	<b>60</b>	<b>2.5</b>	<b>16</b>	<b>0</b>	<b>18</b>	<b>18</b>	<b>0</b>	<b>11</b>	<b>149</b>	<b>6.2</b>



# ARIKE OGUNBOWALE

GUARD | 5-8 | SOPHOMORE | MILWAUKEE, WIS. | DIVINE SAVIOR HOLY ANGELS

# 24

### GAMES WITH ...

	Season	Career
Double Figure Points	19	41
20-Plus Points	3	4
30-Plus Points	1	1
5-Plus Rebounds	6	16
5-Plus Assists	0	0
Double-Double	1	1

### NOTABLES

#### HONORS AND AWARDS:

- ESPNW Player of the Week (November 21, 2016)
- ACC Player of the Week (November 14, 2016)
- 2016 Preseason WNIT MVP
- 2016 ACC All-Freshman Team
- 2016 ACC All-Academic Team

#### 2016-17 SEASON:

- Recorded her first career double-double with 16 points against Virginia Tech on 2/2/17, when she collected a career-high 10 rebounds and a career-high six assists.
- Fell one three-point field goal shy of her career high (five) against Virginia on 1/29/17.
- Led all scorers with 22 points on 01/05/17 versus Wake Forest and matched her career high with four assists.
- Earned Preseason WNIT Most Valuable Player honors after scoring a team-high 17 points with five rebounds, four steals and three assists in the championship game versus Washington on 11/20/16.
- Was named ESPNW Player of the Week on 11/21/16 after recording double-figures in each game of the Preseason WNIT. She averaged 19.5 points per game in the tournament.
- Scored a career-high 30 points in the season opener on 11/11/16 versus Central Michigan and was named Atlantic Coast Conference Player of the Week for that week.

#### 2015-16 SEASON:

- Appeared in all 35 games, averaging 19.3 minutes per game.
- Ranked 26th in the ACC in scoring with 11.4 points per game.

### 2016-17 GAME-BY-GAME

Opponent	Min	FG-A	3FG-A	FT-A	O-D-R	PF	A	T	B	S	Pts
11/11 ·Central Mich.	23	12-13	5-5	1-1	1-2-3	1	2	1	0	2	30
11/14 ·Fordham	25	5-11	0-0	3-3	1-3-4	2	0	2	0	1	13
11/17 ·Green Bay	34	7-16	2-4	2-2	1-1-2	2	0	2	0	3	18
11/20 ·Washington	33	8-17	1-3	0-2	0-5-5	0	3	2	0	4	17
11/22 ·vs. UL-Lafayette	19	4-12	0-3	1-4	1-3-4	3	2	2	0	2	9
11/26 ·TCU	29	6-17	5-6	2-2	4-3-7	0	2	1	1	0	19
11/30 ·at Iowa	33	5-13	1-2	5-6	1-1-2	3	1	4	0	1	16
12/04 ·Valparaiso	18	8-12	1-4	1-1	3-1-4	0	4	0	0	3	18
12/07 ·Connecticut	32	4-14	0-4	1-2	1-1-2	3	1	2	0	1	9
12/10 ·at DePaul	29	7-15	1-4	2-4	2-4-6	3	1	0	1	2	17
12/18 ·at Toledo	26	2-11	0-4	2-4	0-1-1	3	2	3	0	3	6
12/20 at Michigan St.	33	5-13	0-2	1-2	0-6-6	4	3	1	0	0	11
12/27 ·at Chattanooga	29	5-12	1-1	2-2	0-3-3	1	0	0	1	1	13
12/29 ·at NC State*	22	3-9	0-1	0-0	2-2-4	2	3	2	0	0	6
01/02 ·at Ga. Tech*	32	8-18	2-6	0-0	1-3-4	2	0	2	0	1	18
01/05 ·Wake Forest*	26	8-11	4-5	2-3	0-3-3	1	4	0	0	0	22
01/08 ·at Miami*	19	5-12	0-3	1-1	0-4-4	1	1	4	1	1	11
01/12 ·Pittsburgh*	27	6-11	5-8	2-2	0-1-1	0	1	0	0	0	19
01/16 ·at Tennessee	29	6-14	1-1	1-1	0-2-2	1	0	3	0	1	14
01/19 ·at BC*	23	3-9	0-2	4-8	0-4-4	0	2	0	0	4	10
01/22 ·at UNC*	24	4-11	1-1	2-2	1-2-3	3	2	1	1	1	11
01/26 ·Duke*	27	3-11	1-5	2-2	1-3-4	2	1	3	0	0	9
01/29 ·Virginia*	33	6-10	4-4	5-8	0-7-7	2	2	4	0	0	21
02/02 ·at Va. Tech*	35	6-14	1-4	3-6	1-9-10	2	6	1	1	1	16
02/06 Louisville*											
02/12 Georgia Tech*											
02/16 at Clemson*											
02/19 at Syracuse*											
02/23 BC*											
02/26 Florida State*											

### CAREER AND SEASON HIGHS

Points	
Season	30, vs. Central Michigan (11/11/16)
Career	30, vs. Central Michigan (11/11/16)
Rebounds	
Season	10, at Virginia Tech (02/02/17)
Career	10, at Virginia Tech (02/02/17)
Assists	
Season	6, at Virginia Tech (02/02/17)
Career	6, at Virginia Tech (02/02/17)
Steals	
Season	4, 2x, at Boston College (01/19/17)
Career	4, 2x, at Boston College (01/19/17)
Blocks	
Season	1, 6x, at Virginia Tech (02/02/17)
Career	1, 6x, at Virginia Tech (02/02/17)
Field Goals Made	
Season	12, vs. Central Michigan (11/11/16)
Career	12, vs. Central Michigan (11/11/16)
3-Point FGs Made	
Season	5, 3x, vs. Pittsburgh (01/12/17)
Career	5, 3x, vs. Pittsburgh (01/12/17)
Free Throws Made	
Season	5, 2x, vs. Virginia (01/29/17)
Career	8, vs. Miami (02/14/16)
Minutes	
Season	35, at Virginia Tech (02/02/17)
Career	35, at Virginia Tech (02/02/17)

### CAREER STATISTICS

SEASON	GP-GS	MIN/AVG	FG-FGA	PCT	3FG-FGA	PCT	FT-FTA	PCT	ORB	DRB	REB	AVG	PF	DQ	AST	TO	BLK	STL	PTS	AVG
2015-16	35-0	676/19.3	143-330	.433	18-46	.391	94-131	.718	48	71	119	3.4	60	0	41	69	3	22	398	11.4
2016-17	24-23	660/27.5	136-306	.444	36-82	.439	45-68	.662	21	74	95	4.0	41	0	43	40	6	32	353	14.7
<b>TOTAL</b>	<b>59-23</b>	<b>1,336/22.6</b>	<b>279-636</b>	<b>.439</b>	<b>54-128</b>	<b>.422</b>	<b>139-199</b>	<b>.698</b>	<b>69</b>	<b>145</b>	<b>214</b>	<b>3.6</b>	<b>101</b>	<b>0</b>	<b>84</b>	<b>109</b>	<b>9</b>	<b>54</b>	<b>751</b>	<b>12.7</b>



# KATHRYN WESTBELD

FORWARD | 6-2 | JUNIOR | KETTERING, OHIO | KETTERING FAIRMONT

# 33

### GAMES WITH ...

	Season	Career
Double Figure Points	8	30
20-Plus Points	0	0
30-Plus Points	0	0
10-Plus Rebounds	2	6
10-Plus Assists	0	0
Double-Double	1	3

### NOTABLES

#### 2016-17 SEASON:

- Scored a career-high 15 points off of the bench at Virginia Tech on 2/2/17.
- Returned from injury on 1/26/17 vs. Duke and scored six points and collected seven rebounds.
- Equaled her career high in blocks (2) in the team's win at Miami on 1/08/17.
- Recorded her first double-double of the season and the third of her career with 12 points and 11 rebounds at Michigan State on 12/20/16.
- Tied a career high in assists (5) on 12/18/16 at Toledo.
- Has started 19 games and scored in double figures eight times.
- Scored a season-high 14 points with eight rebounds and three assists in Notre Dame's win over Washington on 11/20/16.

#### 2015-16 SEASON:

- Started 33 games and averaged 7.9 points, 5.6 rebounds and 2.0 assists per game with a .528 field-goal percentage, ranking 11th in the ACC.

### 2016-17 GAME-BY-GAME

Opponent	Min	FG-A	3FG-A	FT-A	O-D-R	PF	A	TO	B	S	Pts
11/11 ·Central Mich.	15	3-4	0-1	0-0	0-4-4	2	1	1	0	0	6
11/14 ·Fordham	24	3-10	0-0	0-0	4-7-11	0	1	2	1	0	6
11/17 ·Green Bay	26	4-6	0-1	2-4	3-5-8	2	1	0	0	2	10
11/20 ·Washington	36	6-12	2-2	0-0	1-7-8	3	3	2	0	3	14
11/22 ·vs. UL-Lafayette	24	5-6	0-0	0-0	2-5-7	1	2	1	2	2	10
11/26 ·TCU	24	5-7	0-1	2-2	3-4-7	3	1	1	2	4	12
11/30 ·at Iowa	23	4-5	0-0	0-1	1-2-3	4	0	2	0	0	8
12/04 ·Valparaiso	21	5-9	0-1	0-0	1-3-4	0	3	4	0	2	10
12/07 ·Connecticut	23	4-7	0-1	0-0	2-1-3	3	0	7	0	2	8
12/10 ·at DePaul	17	2-3	0-0	0-0	2-5-7	2	2	2	0	0	4
12/18 ·at Toledo	27	2-5	0-0	4-5	5-2-7	3	5	2	0	2	8
12/20 ·at Michigan St.	33	6-9	0-0	0-0	4-7-11	0	2	0	1	0	12
12/27 ·at Chattanooga	23	4-8	0-0	3-4	3-5-8	0	4	2	2	0	11
12/29 ·at NC State*	26	4-5	0-0	0-0	2-4-6	2	1	0	0	1	8
01/02 ·at Ga. Tech*	16	1-3	0-0	0-0	2-1-3	1	1	3	0	0	2
01/05 ·Wake Forest*	18	4-5	0-0	0-0	2-0-2	1	2	1	0	0	8
01/08 ·at Miami*	31	6-11	0-1	2-2	3-2-5	1	0	1	2	3	14
01/12 ·Pittsburgh*	18	3-4	0-1	2-2	0-1-1	2	3	1	0	1	8
01/16 ·at Tennessee	31	2-6	0-0	0-0	0-2-2	4	3	0	0	1	4
01/19 at BC*					DNP						
01/22 at UNC*					DNP						
01/26 ·Duke*	26	3-7	0-1	0-0	3-4-7	0	1	3	0	2	6
01/29 Virginia*	9	2-3	0-0	0-0	1-1-2	1	2	0	0	0	4
02/02 at Va. Tech*	24	7-8	0-0	1-1	4-3-7	1	4	3	1	0	15
02/06 Louisville*											
02/12 Georgia Tech*											
02/16 at Clemson*											
02/19 at Syracuse*											
02/23 BC*											
02/26 Florida State*											

### CAREER AND SEASON HIGHS

<b>Points</b>	
Season	15, at Virginia Tech (02/02/17)
Career	17, at Virginia Tech (01/29/15)
<b>Rebounds</b>	
Season	11, 2x, at MSU (12/20/16)
Career	14, at TCU (12/12/15)
<b>Assists</b>	
Season	5, at Toledo (12/18/16)
Career	5, 2x, at Toledo (12/18/16)
<b>Steals</b>	
Season	4, vs. TCU (11/26/16)
Career	4, 3x, vs. TCU (11/26/16)
<b>Blocks</b>	
Season	2, 4x, at Miami (01/08/17)
Career	2, 5x, at Miami (01/08/17)
<b>Field Goals Made</b>	
Season	7, at Virginia Tech (02/02/17)
Career	8, at Virginia Tech (01/29/15)
<b>3-Point FGs Made</b>	
Season	2, vs. Washington (11/20/16)
Career	2, 2x, vs. Washington (11/20/16)
<b>Free Throws Made</b>	
Season	4, at Toledo (12/18/16)
Career	6, vs. Quinnipiac (11/25/14)
<b>Minutes</b>	
Season	36, vs. Washington (11/20/16)
Career	38, vs. UCLA (11/28/15)

### CAREER STATISTICS

SEASON	GP-GS	MIN/AVG	FG-FGA	PCT	3FG-FGA	PCT	FT-FTA	PCT	ORB	DRB	REB	AVG	PF	DQ	AST	TO	BLK	STL	PTS	AVG
2014-15	39-0	676/17.3	100-190	.526	7-17	.412	54-76	.711	62	109	171	4.4	73	1	64	67	10	40	261	6.7
2015-16	33-33	682/20.7	114-216	.528	1-7	.143	32-42	.762	65	119	184	5.6	54	0	66	50	12	22	261	7.9
2016-17	22-20	515/23.4	85-143	.594	2-10	.200	16-22	.727	48	75	123	5.6	36	0	42	38	11	25	188	8.5
<b>TOTAL</b>	<b>94-53</b>	<b>1,873/19.9</b>	<b>299-549</b>	<b>.545</b>	<b>10-34</b>	<b>.294</b>	<b>102-140</b>	<b>.729</b>	<b>175</b>	<b>303</b>	<b>478</b>	<b>5.1</b>	<b>163</b>	<b>1</b>	<b>172</b>	<b>155</b>	<b>33</b>	<b>87</b>	<b>710</b>	<b>7.6</b>



# DIAMOND THOMPSON

CENTER | 6-5 | SENIOR | WHEATON, ILL. | WHEATON WARRENVILLE SOUTH

# 35

### GAMES WITH ...

	Season	Career
5-Point Games	1	2
Double Figure Points	0	0
20-Plus Points	0	0
5-Plus Rebounds	0	1
5-Plus Assists	0	0
Double-Double	0	0

### 2016-17 GAME-BY-GAME

Opponent	Min	FG-A	3FG-A	FT-A	O-D-R	PF	A	TO	B	S	Pts
11/11 Central Mich.	11	2-4	0-0	2-5	0-2-2	4	0	3	0	0	6
11/14 Fordham	3	0-0	0-0	0-0	0-0-0	0	0	0	0	0	0
11/17 Green Bay					DNP						
11/20 Washington					DNP						
11/22 vs. UL-Lafayette	3	0-0	0-0	0-0	0-0-0	0	0	0	0	0	0
11/26 TCU	4	0-2	0-0	0-0	0-0-0	0	1	0	0	0	0
11/30 at Iowa					DNP						
12/04 Valparaiso					DNP						
12/07 Connecticut					DNP						
12/10 at DePaul					DNP						
12/18 at Toledo					DNP						
12/20 at Michigan St.	1	0-0	0-0	0-0	0-1-1	0	0	0	0	0	0
12/27 at Chattanooga	2	0-0	0-0	0-0	0-0-0	1	0	0	0	0	0
12/29 at NC State*					DNP						
01/02 at Ga. Tech*					DNP						
01/05 Wake Forest*					DNP						
01/08 at Miami*					DNP						
01/12 Pittsburgh*					DNP						
01/16 at Tennessee					DNP						
01/19 at BC*	1	0-0	0-0	0-0	0-0-0	0	0	0	0	0	0
01/22 at UNC*					DNP						
01/26 Duke*					DNP						
01/29 Virginia*					DNP						
02/02 at Va. Tech*	1	0-0	0-0	0-0	0-0-0	0	0	0	0	0	0
02/06 Louisville*											
02/12 Georgia Tech*											
02/16 at Clemson*											
02/19 at Syracuse*											
02/23 BC*											
02/26 Florida State*											

### CAREER AND SEASON HIGHS

Points	
Season	6, vs. Central Michigan (11/11/16)
Career	6, 3x, vs. Central Mich. (11/11/16)
Rebounds	
Season	2, vs. Central Michigan (11/11/16)
Career	5, vs. Denver (11/27/15)
Assists	
Season	1, vs. TCU (11/26/16)
Career	1, 3x, vs. TCU (11/26/16)
Steals	
Season	-
Career	1, 2x, vs. NC State (02/04/16)
Blocks	
Season	-
Career	2, vs. Clemson (02/25/16)
Field Goals Made	
Season	2, vs. Central Michigan (11/11/16)
Career	2, 4x, vs. Central Mich. (11/11/16)
3-Point FGs Made	
Season	-
Career	-
Free Throws Made	
Season	2, vs. Central Michigan (11/11/16)
Career	2, 6x, vs. Central Mich. (11/11/16)
Minutes	
Season	11, vs. Central Michigan (11/11/16)
Career	15, vs. Denver (11/27/15)

### CAREER STATISTICS

SEASON	GP-GS	MIN/AVG	FG-FGA	PCT	3FG-FGA	PCT	FT-FTA	PCT	ORB	DRB	REB	AVG	PF	DQ	AST	TO	BLK	STL	PTS	AVG
2013-14	16-0	43/2.7	4-6	.667	0-0	.000	0-0	.000	6	7	13	0.81	10	0	0	6	3	0	8	0.5
2014-15	17-0	58/3.4	3-8	.375	0-0	.000	9-15	.600	3	5	8	0.47	8	0	2	3	4	1	15	0.9
2015-16	23-0	75/3.3	9-9	1.000	0-0	.000	8-14	.571	6	14	20	0.9	24	0	0	9	5	1	26	1.1
2016-17	8-0	26/3.3	2-6	.333	0-0	.000	2-5	.400	0	3	3	0.4	5	0	1	3	0	0	6	0.8
<b>TOTAL</b>	<b>64-0</b>	<b>202/3.2</b>	<b>18-29</b>	<b>.621</b>	<b>0-0</b>	<b>.000</b>	<b>19-34</b>	<b>.558</b>	<b>15</b>	<b>29</b>	<b>44</b>	<b>0.7</b>	<b>47</b>	<b>0</b>	<b>3</b>	<b>21</b>	<b>12</b>	<b>2</b>	<b>55</b>	<b>0.9</b>

Notre Dame Combined Team Statistics (as of Feb 02, 2017)  
All games

RECORD:	OVERALL	HOME	AWAY	NEUTRAL
ALL GAMES	21-3	10-1	10-2	1-0
CONFERENCE	9-1	4-0	5-1	0-0
NON-CONFERENCE	12-2	6-1	5-1	1-0

##	Player	gp-gs	min	Total		3-Point		F-Throw		Rebounds			avg	pf	dq	a	to	blk	stl	pts	avg			
				fg-fga	fg%	3fg-fga	3fg%	ft-fa	ft%	off	def	tot												
11	Brianna Turner	24-24	679	28.3	148-250	.592	0-0	.000	60-99	.606	69	111	180	7.5	57	1	28	50	55	22	356	14.8		
24	Arike Ogunbowale	24-23	660	27.5	136-306	.444	36-82	.439	45-68	.662	21	74	95	4.0	41	0	43	40	6	32	353	14.7		
03	Marina Mabrey	24-23	613	25.5	115-247	.466	46-120	.383	47-54	.870	26	56	82	3.4	44	0	61	38	12	33	323	13.5		
15	Lindsay Allen	24-24	809	33.7	86-174	.494	5-14	.357	29-48	.604	19	109	128	5.3	45	0	185	53	3	55	206	8.6		
33	Kathryn Westbeld	22-20	515	23.4	85-143	.594	2-10	.200	16-22	.727	48	75	123	5.6	36	0	42	38	11	25	188	8.5		
05	Jackie Young	20-0	385	19.3	49-106	.462	8-16	.500	30-37	.811	33	40	73	3.7	39	0	21	29	5	19	136	6.8		
22	Erin Boley	24-3	324	13.5	50-119	.420	28-67	.418	21-23	.913	14	46	60	2.5	16	0	18	18	0	11	149	6.2		
21	Kristina Nelson	24-0	279	11.6	38-93	.409	0-0	.000	18-31	.581	26	53	79	3.3	49	2	23	41	13	9	94	3.9		
14	Mychal Johnson	21-3	385	18.3	16-40	.400	7-22	.318	9-9	1.000	3	25	28	1.3	34	0	28	20	2	26	48	2.3		
20	Ali Patberg	14-0	123	8.8	5-8	.625	0-0	.000	4-6	.667	4	15	19	1.4	13	0	9	5	0	3	14	1.0		
35	Diamond Thompson	8-0	26	3.3	2-6	.333	0-0	.000	2-5	.400	0	3	3	0.4	5	0	1	3	0	0	6	0.8		
Team											43	47	90											
Total.....		24	4798		730-1492	.489	132-331	.399	281-402	.699	306	654	960	40.0	379	3	459	342	107	235	1873	78.0		
Opponents.....		24	4801		536-1391	.385	149-459	.325	206-311	.662	253	508	761	31.7	441	-	327	419	59	165	1427	59.5		

TEAM STATISTICS	ND	OPP	Date	Opponent	Score	Att.
SCORING	1873	1427	11/11/16	CENTRAL MICHIGAN	w 107-47	8454
Points per game	78.0	59.5	11/14/16	FORDHAM	w 67-36	7540
Scoring margin	+18.6	-	11/17/16	GREEN BAY	w 71-67	7817
FIELD GOALS-ATT	730-1492	536-1391	11/20/16	WASHINGTON	w 71-60	8106
Field goal pct	.489	.385	11/22/16	vs UL-Lafayette	w 91-51	767
3 POINT FG-ATT	132-331	149-459	11/26/16	TCU	w 92-59	8174
3-point FG pct	.399	.325	11/30/16	at Iowa	w 73-58	3809
3-pt FG made per game	5.5	6.2	12/4/16	VALPARAISO	w 114-54	8132
FREE THROWS-ATT	281-402	206-311	12/07/16	UCONN	L 61-72	9149
Free throw pct	.699	.662	12/10/16	at DePaul	w 75-61	3001
F-Throws made per game	11.7	8.6	12/18/16	at Toledo	w 85-68	5697
REBOUNDS	960	761	12/20/16	at Michigan State	w 79-61	7924
Rebounds per game	40.0	31.7	12/27/16	at Chattanooga	w 79-58	3388
Rebounding margin	+8.3	-	* 12/29/16	at NC State	L 62-70	3677
ASSISTS	459	327	* 1/2/17	at Georgia Tech	w 55-38	1641
Assists per game	19.1	13.6	* 1/5/17	WAKE FOREST	w 92-72	8691
TURNOVERS	342	419	* 01/08/17	at #14/14 Miami	w 67-55	1546
Turnovers per game	14.3	17.5	* 1/12/17	PITTSBURGH	w 86-54	8137
Turnover margin	+3.2	-	01/16/17	at Tennessee	L 69-71	10517
Assist/turnover ratio	1.3	0.8	* 1-19-17	at Boston College	w 80-69	1108
STEALS	235	165	* 01/22/17	at North Carolina	w 77-55	3159
Steals per game	9.8	6.9	* 1/26/17	DUKE	w 62-58	8309
BLOCKS	107	59	* 1/29/17	VIRGINIA	w 82-74	9149
Blocks per game	4.5	2.5	* 02/02/17	at Virginia Tech	w 76-59	2733
ATTENDANCE	91658	48967				
Home games-Avg/Game	11-8333	12-4017	* - Conference game			
Neutral site-Avg/Game	-	1-767				

Score by Periods	1st	2nd	3rd	4th	Totals
Notre Dame	509	480	468	416	1873
Opponents	345	337	383	362	1427



Notre Dame Combined Team Statistics (as of Feb 02, 2017)  
Conference games

RECORD:	OVERALL	HOME	AWAY	NEUTRAL
ALL GAMES	9-1	4-0	5-1	0-0
CONFERENCE	9-1	4-0	5-1	0-0
NON-CONFERENCE	0-0	0-0	0-0	0-0

##	Player	gp-gs	min	Total		3-Point		F-Throw		Rebounds				pf	dq	a	to	blk	stl	pts	avg			
				fg-fga	fg%	3fg-fga	3fg%	ft-fta	ft%	off	def	tot	avg											
03	Marina Mabrey	10-10	279	27.9	51-108	.472	25-63	.397	20-24	.833	5	29	34	3.4	19	0	24	14	4	14	147	14.7		
24	Arike Ogunbowale	10-10	268	26.8	52-116	.448	18-39	.462	21-32	.656	6	38	44	4.4	15	0	22	17	3	8	143	14.3		
11	Brianna Turner	10-10	293	29.3	59-96	.615	0-0	.000	21-35	.600	26	54	80	8.0	29	1	11	24	27	15	139	13.9		
33	Kathryn Westbeld	8-6	168	21.0	30-46	.652	0-3	.000	5-5	1.000	17	16	33	4.1	9	0	14	12	3	7	65	8.1		
15	Lindsay Allen	10-10	348	34.8	32-71	.451	3-7	.429	5-12	.417	5	44	49	4.9	20	0	78	25	2	22	72	7.2		
22	Erin Boley	10-3	160	16.0	23-58	.397	12-29	.414	1-2	.500	7	17	24	2.4	9	0	12	9	0	7	59	5.9		
05	Jackie Young	10-0	190	19.0	18-50	.360	1-4	.250	18-19	.947	19	14	33	3.3	20	0	9	14	1	8	55	5.5		
21	Kristina Nelson	10-0	99	9.9	14-30	.467	0-0	.000	9-16	.563	12	17	29	2.9	12	0	8	16	2	2	37	3.7		
20	Ali Patberg	9-0	95	10.6	5-8	.625	0-0	.000	4-6	.667	4	9	13	1.4	10	0	6	5	0	2	14	1.6		
14	Mychal Johnson	7-1	98	14.0	2-9	.222	0-4	.000	4-4	1.000	1	5	6	0.9	12	0	6	8	0	8	8	1.1		
35	Diamond Thompson	2-0	2	1.0	0-0	.000	0-0	.000	0-0	.000	0	0	0	0.0	0	0	0	0	0	0	0	0.0		
Team											16	16	32											
Total.....		10	2000	286-592		.483	59-149	.396	108-155	.697	118	259	377	37.7	155	1	190	149	42	93	739	73.9		
Opponents.....		10	2000	225-578		.389	62-176	.352	92-130	.708	113	206	319	31.9	174	-	127	166	23	79	604	60.4		

TEAM STATISTICS	ND	OPP	Date	Opponent	Score	Att.
SCORING	739	604	* 12/29/16	at NC State	L 62-70	3677
Points per game	73.9	60.4	* 1/2/17	at Georgia Tech	w 55-38	1641
Scoring margin	+13.5	-	* 1/5/17	WAKE FOREST	w 92-72	8691
FIELD GOALS-ATT	286-592	225-578	* 01/08/17	at #14/14 Miami	w 67-55	1546
Field goal pct	.483	.389	* 1/12/17	PITTSBURGH	w 86-54	8137
3 POINT FG-ATT	59-149	62-176	* 1-19-17	at Boston College	w 80-69	1108
3-point FG pct	.396	.352	* 01/22/17	at North Carolina	w 77-55	3159
3-pt FG made per game	5.9	6.2	* 1/26/17	DUKE	w 62-58	8309
FREE THROWS-ATT	108-155	92-130	* 1/29/17	VIRGINIA	w 82-74	9149
Free throw pct	.697	.708	* 02/02/17	at Virginia Tech	w 76-59	2733
F-Throws made per game	10.8	9.2	* - Conference game			
REBOUNDS	377	319				
Rebounds per game	37.7	31.9				
Rebounding margin	+5.8	-				
ASSISTS	190	127				
Assists per game	19.0	12.7				
TURNOVERS	149	166				
Turnovers per game	14.9	16.6				
Turnover margin	+1.7	-				
Assist/turnover ratio	1.3	0.8				
STEALS	93	79				
Steals per game	9.3	7.9				
BLOCKS	42	23				
Blocks per game	4.2	2.3				
ATTENDANCE	34286	13864				
Home games-Avg/Game	4-8572	6-2311				
Neutral site-Avg/Game	-	0-0				

Score by Periods	1st	2nd	3rd	4th	Totals
Notre Dame	183	204	194	158	739
Opponents	153	141	157	153	604

Notre Dame Category Leaders (as of Feb 02, 2017)  
All games

Points	G	Pts	Pts/G	Scoring Average	G	Pts	Avg/G
Brianna Turner	24	356	14.8	Brianna Turner	24	356	14.8
Arike Ogunbowale	24	353	14.7	Arike Ogunbowale	24	353	14.7
Marina Mabrey	24	323	13.5	Marina Mabrey	24	323	13.5
Lindsay Allen	24	206	8.6	Lindsay Allen	24	206	8.6
Kathryn Westbeld	22	188	8.5	Kathryn Westbeld	22	188	8.5
Erin Boley	24	149	6.2	Jackie Young	20	136	6.8
Jackie Young	20	136	6.8	Erin Boley	24	149	6.2
Kristina Nelson	24	94	3.9	Kristina Nelson	24	94	3.9
Mychal Johnson	21	48	2.3	Mychal Johnson	21	48	2.3
Ali Patberg	14	14	1.0	Ali Patberg	14	14	1.0
Diamond Thompson	8	6	0.8	Diamond Thompson	8	6	0.8

FG Percentage	FG	Att	Pct	Field Goal Attempts	G	Att	Att/G
Ali Patberg	5	8	.625	Arike Ogunbowale	24	306	12.8
Kathryn Westbeld	85	143	.594	Brianna Turner	24	250	10.4
Brianna Turner	148	250	.592	Marina Mabrey	24	247	10.3
Lindsay Allen	86	174	.494	Lindsay Allen	24	174	7.3
Marina Mabrey	115	247	.466	Kathryn Westbeld	22	143	6.5
Jackie Young	49	106	.462				
Arike Ogunbowale	136	306	.444	Field Goals Made	G	Made	Made/G
Erin Boley	50	119	.420	Brianna Turner	24	148	6.2
Kristina Nelson	38	93	.409	Arike Ogunbowale	24	136	5.7
Mychal Johnson	16	40	.400	Marina Mabrey	24	115	4.8
Diamond Thompson	2	6	.333	Lindsay Allen	24	86	3.6
				Kathryn Westbeld	22	85	3.9

3-Point Percentage	3FG	Att	Pct	3-Point FG Attempts	G	Att	Att/G
Jackie Young	8	16	.500	Marina Mabrey	24	120	5.0
Arike Ogunbowale	36	82	.439	Arike Ogunbowale	24	82	3.4
Erin Boley	28	67	.418	Erin Boley	24	67	2.8
Marina Mabrey	46	120	.383	Mychal Johnson	21	22	1.0
Lindsay Allen	5	14	.357	Jackie Young	20	16	0.8
Mychal Johnson	7	22	.318				
Kathryn Westbeld	2	10	.200	3-Point FG Made	G	Made	Made/G
				Marina Mabrey	24	46	1.9
				Arike Ogunbowale	24	36	1.5
				Erin Boley	24	28	1.2
				Jackie Young	20	8	0.4
				Mychal Johnson	21	7	0.3

Free Throw Percent	FG	Att	Pct	Free Throw Attempts	G	Att	Att/G
Mychal Johnson	9	9	1.000	Brianna Turner	24	99	4.1
Erin Boley	21	23	.913	Arike Ogunbowale	24	68	2.8
Marina Mabrey	47	54	.870	Marina Mabrey	24	54	2.3
Jackie Young	30	37	.811	Lindsay Allen	24	48	2.0
Kathryn Westbeld	16	22	.727	Jackie Young	20	37	1.9
Ali Patberg	4	6	.667				
Arike Ogunbowale	45	68	.662	Free Throws Made	G	Made	Made/G
Brianna Turner	60	99	.606	Brianna Turner	24	60	2.5
Lindsay Allen	29	48	.604	Marina Mabrey	24	47	2.0
Kristina Nelson	18	31	.581	Arike Ogunbowale	24	45	1.9
Diamond Thompson	2	5	.400	Jackie Young	20	30	1.5
				Lindsay Allen	24	29	1.2

Notre Dame Category Leaders (as of Feb 02, 2017)  
All games

<u>Rebounds</u>	<u>G</u>	<u>Reb</u>	<u>Reb/G</u>
Brianna Turner	24	180	7.5
Lindsay Allen	24	128	5.3
Kathryn Westbeld	22	123	5.6
Arike Ogunbowale	24	95	4.0
Marina Mabrey	24	82	3.4

<u>Rebound Average</u>	<u>G</u>	<u>Reb</u>	<u>Avg/G</u>
Brianna Turner	24	180	7.5
Kathryn Westbeld	22	123	5.6
Lindsay Allen	24	128	5.3
Arike Ogunbowale	24	95	4.0
Jackie Young	20	73	3.7

<u>Offensive Rebounds</u>	<u>G</u>	<u>No.</u>	<u>Avg/G</u>
Brianna Turner	24	69	2.9
Kathryn Westbeld	22	48	2.2
Jackie Young	20	33	1.7
Marina Mabrey	24	26	1.1
Kristina Nelson	24	26	1.1

<u>Defensive Rebounds</u>	<u>G</u>	<u>No.</u>	<u>Avg/G</u>
Brianna Turner	24	111	4.6
Lindsay Allen	24	109	4.5
Kathryn Westbeld	22	75	3.4
Arike Ogunbowale	24	74	3.1
Marina Mabrey	24	56	2.3

<u>Fouls</u>	<u>G</u>	<u>No.</u>	<u>Per/G</u>
Brianna Turner	24	57	2.4
Kristina Nelson	24	49	2.0
Lindsay Allen	24	45	1.9
Marina Mabrey	24	44	1.8
Arike Ogunbowale	24	41	1.7

<u>Foulsouts</u>	<u>G</u>	<u>No.</u>
Kristina Nelson	24	2
Brianna Turner	24	1

<u>Assists</u>	<u>G</u>	<u>No.</u>	<u>Ast/G</u>
Lindsay Allen	24	185	7.7
Marina Mabrey	24	61	2.5
Arike Ogunbowale	24	43	1.8
Kathryn Westbeld	22	42	1.9
Mychal Johnson	21	28	1.3
Brianna Turner	24	28	1.2

<u>Steals</u>	<u>G</u>	<u>No.</u>	<u>Stl/G</u>
Lindsay Allen	24	55	2.3
Marina Mabrey	24	33	1.4
Arike Ogunbowale	24	32	1.3
Mychal Johnson	21	26	1.2
Kathryn Westbeld	22	25	1.1

<u>Blocked Shots</u>	<u>G</u>	<u>No.</u>	<u>Blk/G</u>
Brianna Turner	24	55	2.3
Kristina Nelson	24	13	0.5
Marina Mabrey	24	12	0.5
Kathryn Westbeld	22	11	0.5
Arike Ogunbowale	24	6	0.3

<u>Minutes</u>	<u>G</u>	<u>No.</u>	<u>Min/G</u>
Lindsay Allen	24	809	33.7
Brianna Turner	24	679	28.3
Arike Ogunbowale	24	660	27.5
Marina Mabrey	24	613	25.5
Kathryn Westbeld	22	515	23.4

<u>Turnovers</u>	<u>G</u>	<u>No.</u>	<u>TO/G</u>
Lindsay Allen	24	53	2.2
Brianna Turner	24	50	2.1
Kristina Nelson	24	41	1.7
Arike Ogunbowale	24	40	1.7
Marina Mabrey	24	38	1.6
Kathryn Westbeld	22	38	1.7

Notre Dame Team Game-by-Game Comparison (as of Feb 02, 2017)  
All games

Opponent	1st	2nd	Score	Mar	Total FG	FG Pct	3-Pointers	3FG Pct	Free Throws	FT Pct	Rebounds	A
CENTRAL MICHIGAN	56/20	51/27	107-47	+60	40-65/17-63	.615/.270	12-22/7-33	.545/.212	15-21/6-12	.714/.500	45/33 +12	2
FORDHAM	34/20	33/16	67-36	+31	25-59/12-52	.424/.231	1-8/2-19	.125/.105	16-22/10-15	.727/.667	46/31 +15	1
GREEN BAY	41/30	30/37	71-67	+4	23-64/25-56	.359/.446	5-13/12-25	.385/.480	20-26/5-6	.769/.833	41/34 +7	1
WASHINGTON	39/22	32/38	71-60	+11	28-67/21-57	.418/.368	4-11/7-22	.364/.318	11-20/11-14	.550/.786	46/34 +12	1
UL-Lafayette	42/20	49/31	91-51	+40	39-68/19-61	.574/.311	5-16/6-18	.313/.333	8-16/7-15	.500/.467	60/20 +40	2
TCU	37/34	55/25	92-59	+33	33-71/21-48	.465/.438	11-20/6-11	.550/.545	15-17/11-14	.882/.786	45/21 +24	2
Iowa	41/33	32/25	73-58	+15	30-67/24-53	.448/.453	4-11/4-19	.364/.211	9-13/6-16	.692/.375	34/40 (6)	1
VALPARAISO	72/23	42/31	114-54	+60	48-75/22-58	.640/.379	10-22/9-26	.455/.346	8-10/1-1	.800/1000	38/25 +13	2
UCONN	34/34	27/38	61-72	(11)	27-63/26-56	.429/.464	3-14/1-9	.214/.111	4-8/19-20	.500/.950	32/35 (3)	1
DePaul	33/27	42/34	75-61	+14	27-61/24-66	.443/.364	4-12/5-23	.333/.217	17-22/8-16	.773/.500	48/35 +13	1
Toledo	44/32	41/36	85-68	+17	32-60/26-59	.533/.441	5-12/8-20	.417/.400	16-25/8-12	.640/.667	27/40 (13)	2
Michigan State	41/33	38/28	79-61	+18	31-63/24-64	.492/.375	3-9/8-23	.333/.348	14-18/5-8	.778/.625	43/33 +10	2
Chattanooga	44/29	35/29	79-58	+21	32-57/23-60	.561/.383	1-4/9-23	.250/.391	14-20/3-10	.700/.300	46/24 +22	2
NC State	28/34	34/36	62-70	(8)	26-62/24-57	.419/.421	6-15/8-19	.400/.421	4-11/14-15	.364/.933	37/37 -	1
Georgia Tech	34/17	21/21	55-38	+17	23-57/14-58	.404/.241	4-16/1-8	.250/.125	5-10/9-20	.500/.450	40/40 -	1
WAKE FOREST	55/32	37/40	92-72	+20	39-65/25-52	.600/.481	10-16/10-18	.625/.556	4-7/12-14	.571/.857	29/28 +1	2
#14/14 Miami	30/29	37/26	67-55	+12	28-56/21-56	.500/.375	3-13/5-18	.231/.278	8-14/8-12	.571/.667	39/28 +11	1
PITTSBURGH	37/20	49/34	86-54	+32	26-52/18-50	.500/.360	7-16/6-18	.438/.333	27-30/12-14	.900/.857	41/19 +22	1
Tennessee	44/31	25/40	69-71	(2)	29-60/27-60	.483/.450	5-8/3-12	.625/.250	6-9/14-22	.667/.636	32/37 (5)	1
Boston College	43/35	37/34	80-69	+11	29-53/27-54	.547/.500	7-12/6-16	.583/.375	15-22/9-11	.682/.818	27/31 (4)	1
North Carolina	47/27	30/28	77-55	+22	31-70/22-58	.443/.379	5-15/7-24	.333/.292	10-11/4-8	.909/.500	43/32 +11	2
DUKE	35/35	27/23	62-58	+4	25-64/22-57	.391/.386	3-16/6-15	.188/.400	9-10/8-13	.900/.615	41/37 +4	1
VIRGINIA	44/36	38/38	82-74	+8	26-52/29-71	.500/.408	9-17/6-16	.529/.375	21-32/10-15	.656/.667	40/37 +3	2
Virginia Tech	34/29	42/30	76-59	+17	33-61/23-65	.541/.354	5-13/7-24	.385/.292	5-8/6-8	.625/.750	40/30 +10	2

Note: Game totals are displayed in the format TEAM/OPPONENT for each category

Notre Dame Points-Rebounds-Assists (as of Feb 02, 2017)  
All games

Opponent	Date	Score		03	05	11	14	15	20	21
				MABREY,MAR	YOUNG,JACK	TURNER,BRI	JOHNSON,MY	ALLEN,LIND	PATBERG,AL	NELSON,KRI
CENTRAL MICHIGAN	11/11/16	107-47	w	17-3-5	DNP	12-3-1	7-2-4	13-5-8	0-3-3	8-9-2
FORDHAM	11/14/16	67-36	w	7-2-0	DNP	10-8-0	2-1-4	13-6-5	0-1-0	9-7-1
GREEN BAY	11/17/16	71-67	w	13-4-3	3-7-1	14-4-3	5-0-0	8-5-8	DNP	0-1-0
WASHINGTON	11/20/16	71-60	w	4-2-2	8-2-0	10-12-0	0-1-0	13-5-4	DNP	5-6-3
vs UL-Lafayette	11/22/16	91-51	w	27-3-3	13-6-4	16-12-1	2-4-1	2-6-9	DNP	5-5-2
TCU	11/26/16	92-59	w	17-5-2	12-5-3	18-3-1	0-1-0	2-4-12	DNP	2-2-1
at Iowa	11/30/16	73-58	w	9-4-2	5-3-0	15-4-1	0-2-0	11-6-8	DNP	4-3-0
VALPARAISO	12/4/16	114-54	w	16-1-4	20-5-3	13-4-1	6-6-4	8-4-6	DNP	8-6-3
UCONN	12/07/16	61-72	L	2-2-1	7-4-0	16-12-3	3-1-0	11-5-8	DNP	2-2-1
at DePaul	12/10/16	75-61	w	7-6-4	DNP	14-11-2	10-1-1	14-9-3	DNP	2-4-0
at Toledo	12/18/16	85-68	w	19-6-3	DNP	26-8-2	2-0-3	10-2-8	0-1-0	2-0-1
at Michigan State	12/20/16	79-61	w	19-5-5	0-0-0	19-7-1	3-0-5	9-5-6	0-0-0	0-0-0
at Chattanooga	12/27/16	79-58	w	2-1-2	3-3-1	24-5-1	0-3-0	11-11-12	0-1-0	8-3-0
at NC State	12/29/16	62-70	L	22-5-4	0-1-0	7-3-2	2-2-0	12-4-4	DNP	2-1-0
at Georgia Tech	1/2/17	55-38	w	7-1-4	0-1-0	9-11-0	2-1-0	7-7-8	0-0-0	5-5-1
WAKE FOREST	1/5/17	92-72	w	14-3-1	2-1-3	15-6-4	2-0-2	12-3-4	0-3-1	6-6-5
at #14/14 Miami	01/08/17	67-55	w	15-5-4	9-6-1	7-10-2	0-1-0	7-2-7	0-0-1	4-2-0
PITTSBURGH	1/12/17	86-54	w	7-5-2	15-8-1	11-6-0	2-0-0	2-3-7	2-3-1	13-7-0
at Tennessee	01/16/17	69-71	L	17-4-1	10-5-0	10-7-0	0-0-0	9-6-10	DNP	2-2-1
at Boston College	1-19-17	80-69	w	21-3-1	4-1-0	19-8-1	0-2-3	12-3-6	6-1-2	2-0-1
at North Carolina	01/22/17	77-55	w	13-4-4	10-8-0	24-12-1	0-0-1	5-6-11	6-2-0	0-4-0
DUKE	1/26/17	62-58	w	9-5-1	4-2-0	25-12-0	DNP	2-3-12	0-0-0	2-2-0
VIRGINIA	1/29/17	82-74	w	26-2-2	7-1-2	9-8-1	DNP	5-11-10	0-3-1	3-2-1
at Virginia Tech	02/02/17	76-59	w	13-1-1	4-4-2	13-4-0	DNP	8-7-9	0-1-0	0-0-0

Opponent	Date	Score		22	24	33	35
				BOLEY,ERIN	OGUNBOWAL	WESTBELD,K	THOMPSON,D
CENTRAL MICHIGAN	11/11/16	107-47	w	8-2-3	30-3-2	6-4-1	6-2-0
FORDHAM	11/14/16	67-36	w	7-1-0	13-4-0	6-11-1	0-0-0
GREEN BAY	11/17/16	71-67	w	0-3-0	18-2-0	10-8-1	DNP
WASHINGTON	11/20/16	71-60	w	0-0-0	17-5-3	14-8-3	DNP
vs UL-Lafayette	11/22/16	91-51	w	7-8-1	9-4-2	10-7-2	0-0-0
TCU	11/26/16	92-59	w	10-3-0	19-7-2	12-7-1	0-0-1
at Iowa	11/30/16	73-58	w	5-4-0	16-2-1	8-3-0	DNP
VALPARAISO	12/4/16	114-54	w	15-2-1	18-4-4	10-4-3	DNP
UCONN	12/07/16	61-72	L	3-0-0	9-2-1	8-3-0	DNP
at DePaul	12/10/16	75-61	w	7-2-0	17-6-1	4-7-2	DNP
at Toledo	12/18/16	85-68	w	12-1-1	6-1-2	8-7-5	DNP
at Michigan State	12/20/16	79-61	w	6-4-0	11-6-3	12-11-2	0-1-0
at Chattanooga	12/27/16	79-58	w	7-6-0	13-3-0	11-8-4	0-0-0
at NC State	12/29/16	62-70	L	3-1-1	6-4-3	8-6-1	DNP
at Georgia Tech	1/2/17	55-38	w	5-1-1	18-4-0	2-3-1	DNP
WAKE FOREST	1/5/17	92-72	w	11-1-2	22-3-4	8-2-2	DNP
at #14/14 Miami	01/08/17	67-55	w	0-1-0	11-4-1	14-5-0	DNP
PITTSBURGH	1/12/17	86-54	w	7-3-1	19-1-1	8-1-3	DNP
at Tennessee	01/16/17	69-71	L	3-0-0	14-2-0	4-2-3	DNP
at Boston College	1-19-17	80-69	w	6-4-3	10-4-2	DNP	0-0-0
at North Carolina	01/22/17	77-55	w	8-1-1	11-3-2	DNP	DNP
DUKE	1/26/17	62-58	w	5-6-2	9-4-1	6-7-1	DNP
VIRGINIA	1/29/17	82-74	w	7-2-1	21-7-2	4-2-2	DNP
at Virginia Tech	02/02/17	76-59	w	7-4-0	16-10-6	15-7-4	0-0-0

Notre Dame Game-by-Game Highs (as of Feb 02, 2017)  
All games

Opponent	Date	Score	Points	Rebounds	Assists	Steals	Blocked shots
CENTRAL MICHIGAN	11/11/16	107-47	30-Arike Ogunbowale	9-Kristina Nelson	8-Lindsay Allen	4-Mychal Johnson Lindsay Allen	1-Mychal Johnson Kristina Nelson Marina Mabrey
FORDHAM	11/14/16	67-36	13-Lindsay Allen Arike Ogunbowale	11-Kathryn Westbeld	5-Lindsay Allen	2-Lindsay Allen	1-Kristina Nelson Brianna Turner Kathryn Westbeld
GREEN BAY	11/17/16	71-67	18-Arike Ogunbowale	8-Kathryn Westbeld	8-Lindsay Allen	3-Arike Ogunbowale Lindsay Allen	2-Brianna Turner
WASHINGTON	11/20/16	71-60	17-Arike Ogunbowale	12-Brianna Turner	4-Lindsay Allen	4-Marina Mabrey Arike Ogunbowale	1-Brianna Turner Jackie Young
vs UL-Lafayette	11/22/16	91-51	27-Marina Mabrey	12-Brianna Turner	9-Lindsay Allen	3-Mychal Johnson Marina Mabrey	3-Kristina Nelson
TCU	11/26/16	92-59	19-Arike Ogunbowale	7-Kathryn Westbeld Arike Ogunbowale	12-Lindsay Allen	4-Kathryn Westbeld	2-Kathryn Westbeld
at Iowa	11/30/16	73-58	16-Arike Ogunbowale	6-Lindsay Allen	8-Lindsay Allen	5-Lindsay Allen Marina Mabrey	1-Lindsay Allen Marina Mabrey
VALPARAISO	12/4/16	114-54	20-Jackie Young	6-Kristina Nelson Mychal Johnson	6-Lindsay Allen	6-Jackie Young	4-Kristina Nelson
UCONN	12/07/16	61-72	16-Brianna Turner	12-Brianna Turner	8-Lindsay Allen	4-Jackie Young	2-Brianna Turner
at DePaul	12/10/16	75-61	17-Arike Ogunbowale	11-Brianna Turner	4-Marina Mabrey	2-Marina Mabrey Arike Ogunbowale	2-Brianna Turner
at Toledo	12/18/16	85-68	26-Brianna Turner	8-Brianna Turner	8-Lindsay Allen	4-Lindsay Allen	2-Brianna Turner Marina Mabrey
at Michigan State	12/20/16	79-61	19-Brianna Turner Marina Mabrey	11-Kathryn Westbeld	6-Lindsay Allen	1-Marina Mabrey Lindsay Allen	5-Brianna Turner
at Chattanooga	12/27/16	79-58	24-Brianna Turner	11-Lindsay Allen	12-Lindsay Allen	1-Mychal Johnson Arike Ogunbowale Marina Mabrey Lindsay Allen	6-Brianna Turner
at NC State	12/29/16	62-70	22-Marina Mabrey	6-Kathryn Westbeld	4-Marina Mabrey Lindsay Allen	3-Mychal Johnson	1-Marina Mabrey Brianna Turner
at Georgia Tech	1/2/17	55-38	18-Arike Ogunbowale	11-Brianna Turner	8-Lindsay Allen	4-Brianna Turner Lindsay Allen	6-Brianna Turner
WAKE FOREST	1/5/17	92-72	22-Arike Ogunbowale	6-Kristina Nelson Brianna Turner	5-Kristina Nelson	4-Lindsay Allen	2-Brianna Turner
at #14/14 Miami	01/08/17	67-55	15-Marina Mabrey	10-Brianna Turner	7-Lindsay Allen	4-Marina Mabrey	2-Kathryn Westbeld
PITTSBURGH	1/12/17	86-54	19-Arike Ogunbowale	8-Jackie Young	7-Lindsay Allen	3-Brianna Turner	2-Brianna Turner
at Tennessee	01/16/17	69-71	17-Marina Mabrey	7-Brianna Turner	10-Lindsay Allen	2-Lindsay Allen	3-Brianna Turner
at Boston College	1-19-17	80-69	21-Marina Mabrey	8-Brianna Turner	6-Lindsay Allen	4-Brianna Turner Arike Ogunbowale	3-Brianna Turner
at North Carolina	01/22/17	77-55	24-Brianna Turner	12-Brianna Turner	11-Lindsay Allen	4-Lindsay Allen	6-Brianna Turner
DUKE	1/26/17	62-58	25-Brianna Turner	12-Brianna Turner	12-Lindsay Allen	2-Marina Mabrey Kathryn Westbeld Brianna Turner Lindsay Allen	2-Brianna Turner
VIRGINIA	1/29/17	82-74	26-Marina Mabrey	11-Lindsay Allen	10-Lindsay Allen	4-Lindsay Allen	3-Brianna Turner
at Virginia Tech	02/02/17	76-59	16-Arike Ogunbowale	10-Arike Ogunbowale	9-Lindsay Allen	2-Lindsay Allen Marina Mabrey	2-Brianna Turner