



# NOTRE DAME

## WOMEN'S BASKETBALL

**Fighting Irish Media**  
▶ Leigh Torbin  
▶ [ltorbin@nd.edu](mailto:ltorbin@nd.edu)  
▶ 407-325-5703 (c)  
▶ [UND.com/WBB](http://UND.com/WBB)

### 2016-17 SCHEDULE

#### NOVEMBER

3	Roberts Wesleyan (Exhib.)	W, 129-50
11	Central Michigan \$ [ACC Net. Extra]	W, 107-47
14	Fordham \$ [ACC Net. Extra]	W, 67-36
17	Green Bay \$ [ACC Net. Extra]	W, 71-67
20	#17 Washington \$ [CBS Sports]	W, 71-60
22	vs. UL-Lafayette ^	W, 91-51
26	TCU [ACC Net. Extra]	W, 92-59
30	at Iowa [BTN]	W, 73-58

#### DECEMBER

4	Valparaiso [ACC Net. Extra]	W, 114-54
7	#1 UConn [ESPN2]	L, 61-72
10	at #16 DePaul [CSN+]	W, 75-61
18	at Toledo [ESPN3]	W, 85-68
20	at Michigan State [BTN]	W, 79-61
27	at Chattanooga	W, 79-58
29	at NC State * [ACC Net. Extra]	L, 62-70

#### JANUARY

2	at Georgia Tech * [ACC Net. Extra]	W, 55-38
5	Wake Forest * [ACC Net. Extra]	W, 92-72
8	at #14 Miami * [ESPN2]	W, 67-55
12	Pittsburgh * [ACC Net. Extra]	W, 86-54
16	at Tennessee [ESPN2]	L, 69-71
19	at Boston College * [ACC Net. Extra]	7 p.m.
22	at North Carolina * [ESPN2]	12 p.m.
26	Duke * [ACC Net. Extra]	7 p.m.
29	Virginia * [ESPN2]	12 p.m.

#### FEBRUARY

2	at Virginia Tech * [ACC Net. Extra]	7 p.m.
6	Louisville * [ESPN2]	7 p.m.
12	Georgia Tech * [ACC Network]	1 p.m.
16	at Clemson * [ACC Net. Extra]	7 p.m.
19	at Syracuse * [ESPN2]	5 p.m.
23	Boston College * [ACC Net. Extra]	7 p.m.
26	Florida State * [ESPN2]	1 p.m.

#### MARCH

1	ACC First Round %	TBA
2	ACC Second Round %	TBA
3	ACC Quarterfinals %	TBA
4	ACC Semifinals %	TBA
5	ACC Final %	TBA
17/18	NCAA First Round &	TBA
19/20	NCAA Second Round &	TBA
24/25	NCAA Sweet 16 @	TBA
26/27	NCAA Elite Eight @	TBA
31	NCAA Semifinal #	TBA

#### APRIL

2	NCAA Championship Game #	TBA
---	--------------------------	-----

#### Home Games in bold

All times are subject to change and listed in ET

[denotes television coverage]

\* - denotes an Atlantic Coast Conference game

\$ - Preseason WNIT (at Notre Dame, Ind.)

^ - Campbell Center (Houston, Texas)

% - HTC Center (Conway, S.C.)

& - TBA Campus sites

@ - 2017 NCAA Regional Sites

Webster Bank Arena [Bridgeport, Conn.]

Rupp Arena [Lexington, Ky.]

Chesapeake Energy Arena [Oklahoma City, Okla.]

Stockton Arena [Stockton, Calif.]

# - 2017 NCAA Final Four

American Airlines Center [Dallas, Texas]

### GAME 20 • BOSTON COLLEGE



## #6/9 University of Notre Dame Fighting Irish

(16-3, 4-1 ACC)



## Boston College Eagles

(8-10, 1-4 ACC)

#### GAME 20

**Matchup:** Notre Dame at Boston College

**Date:** Thursday, Jan. 19

**Time:** 7 p.m. ET

**Site:** Chestnut Hill, Mass.

**Arena:** Conte Forum (8,606)

**Television:** None

**Live Video:** ACC Network Extra (WatchESPN)

**Talent:** Bill Spaulding, Kerri Shields

**Live Radio:** Pulse FM 96.9/92.1

**Talent:** Bob Nagle

**Live Audio:** WatchND App or WatchND.tv

**Talent:** Bob Nagle

**Live Stats:** UND.com

**Live Updates:** @NDWBB

**Series History:** Notre Dame leads 18-5

### What's Inside

Notes	1-7
University Information & Quick Facts	2
Series History vs. Boston College	2
Around the ACC	3
National Polls & Notre Dame in the Polls	4
2016-17 Honors & Awards	4
Notre Dame's Record When	5
Specialty Stats	6
Notre Dame Roster	8
Radio/TV Roster	9
Miscellaneous Statistics	10
The Last Time	11-12
Game Recaps	13-17
Superlatives	18-19
Player Bio Updates	20-30
2016-17 Season Stats	31-36

### Notre Dame Likely Starters and Reserves

No	Name	Pos	Ht	Yr*	PPG	RPG	Other	Notes
3	Marina Mabrey	G	5-11	So.	12.7	3.5	52 assts	• 2nd on ND in ACC games at 13.0 ppg
11	Brianna Turner	F	6-3	Jr.	14.0	7.2	39 blks	• Third Irish player with 200 career blocks
15	Lindsay Allen	G	5-8	Sr.	9.2	5.2	137 assts	• Third in nation in A-2-TO ratio at 3.61
24	Arike Ogunbowale	G	5-8	So.	15.1	3.5	30 assts	• Has led ND in scoring 10 times this year
33	Kathryn Westbeld	F	6-2	Jr.	8.6	5.6	35 assts	• Career-highs for ppg and rpg in '16-17

#### Off the Bench For the Fighting Irish

5	Jackie Young	G	6-0	Fr.	7.1	3.8	17 assts	• Has scored in double figures last 2 gms
14	Mychal Johnson	G	5-7	Jr.	2.5	1.4	24 assts	• 24 assts are 1 shy of career season high
20	Ali Patberg	G	5-10	So.	0.2	1.3	6 assts	• Scored first career points in win vs. Pitt
21	Kristina Nelson	F	6-4	Sr.	4.6	3.7	21 assts	• Scored career-high 13 points vs. Pitt
22	Erin Boley	G	6-2	Fr.	6.1	2.3	11 assts	• Tops Irish with .913 free throw % (21-23)
35	Diamond Thompson	C	6-5	Sr.	1.0	0.5	1 asst	• Seen action in six games this season

\* = players listed by academic class (Kristina Nelson did not play in 2014-15 and Ali Patberg did not play in 2015-16 so both have an additional season of athletic eligibility)

# 6

Signee **Danielle Patterson** (Brooklyn, N.Y.) was named a McDonald's All-American. It's the sixth year in a row the Irish have had at least one. The 2016-17 team has eight McDonald's All-Americans.

# 4

Senior **Lindsay Allen** needs four assists to have 700 in her Notre Dame career. She would be the fourth player to record 700 assists in an Irish uniform and the fifth in ACC history to ever do so.

# 21

Notre Dame has not lost consecutive games since November of 2010, avenging each of its last 21 losses in the ensuing contest.



NDWBB



NDWBB



NDWBB



NDWBB

### UNIVERSITY INFORMATION

School: ..... University of Notre Dame  
 Location: ..... Notre Dame, IN 46556  
 Founded: ..... 1842  
 Enrollment: ..... 8,475 (undergraduate), 12,126 (total)  
 Nickname: ..... Fighting Irish  
 Colors: ..... Gold and Blue  
 Affiliation: ..... NCAA Division I  
 Conference: ..... Atlantic Coast Conference (ACC)  
 President: ..... Rev. John I. Jenkins, C.S.C. (Notre Dame '76)  
 Provost: ..... Thomas Burish  
 NCAA Faculty Representative: ..... Patricia Bellia (Harvard '91)  
 Athletics Director: ..... Jack Swarbrick (Notre Dame '76)  
 Sr. Assoc. Athletic Director/Sport Admin.: ..... Jill Bodensteiner (Notre Dame '91)  
 Ticket Office Phone: ..... (574) 631-7356  
 Home Arena (capacity): ..... Purcell Pavilion at the Joyce Center (9,149)

### WOMEN'S BASKETBALL INFORMATION

Karen and Kevin Keyes Family Head Women's Basketball Coach:  
 Muffet McGraw (St. Joseph's (Pa.) '77)  
 Record at Notre Dame: ..... 748-226 (.768) (30th season)  
 Record Overall ..... 836-267 (.758) (35th season)  
 ACC Record/Years: ..... 51-2 (.962) (fourth season)  
 Associate Head Coach: ..... Carol Owens (Northern Illinois '90)  
 Associate Head Coach / Recruiting Coordinator: ..... Niele Ivey (Notre Dame '00)  
 Associate Coach: ..... Beth Cunningham (Notre Dame '97)  
 Director of Basketball Operations: ..... Katie Capps (Western Kentucky '02)  
 Video Coordinator: ..... Erica Williamson (Notre Dame '10)  
 Special Events Coordinator: ..... Sharla Lewis (Chicago State '99)  
 Athletic Trainer: ..... Anne Marquez (West Florida '01)  
 Strength and Conditioning: ..... Elisa Angeles (Ball State '03)  
 Academic Counselor: ..... Amanda Hall (DePauw '01)  
 Equipment Manager: ..... Kathy Speybroeck (Indiana '82)  
 Women's Basketball Office Phone: ..... (574) 631-5420

### MEDIA RELATIONS INFORMATION

Associate Director, Athletics Communications (WBB SID): ..... Leigh Torbin  
 Office Phone: ..... (574) 631-9471  
 Cell Phone: ..... (407) 325-5703  
 E-Mail: ..... ltorbin@nd.edu  
 Assistant Director, Athletics Communications (WBB Asst.): ..... Megan Golden  
 Office Phone: ..... (574) 631-2664  
 Cell Phone: ..... (440) 223-7142  
 E-Mail: ..... mgolden@nd.edu  
 Purcell Pavilion Press Row Phone: ..... (574) 631-5309  
 Mailing Address: ..... University of Notre Dame  
 113 Joyce Center  
 Notre Dame, IN 46556  
 Web Site: ..... www.und.com/NDWBB  
 Twitter: ..... @NDWBB  
 Instagram: ..... NDWBB  
 Facebook: ..... facebook.com/NDWBB  
 Snapchat ..... NDWBB

### TEAM INFORMATION

2015-16 Overall Record: ..... 33-2  
 2015-16 ACC Record/Finish: ..... 16-0 (1st)  
 2015-16 Postseason: ..... ACC Tournament Champion  
 ..... NCAA Sweet 16  
 Letter Winners Returning: ..... 9  
 Letter Winners Lost: ..... 3  
 Newcomers: ..... 2  
 2016-17 Captains: ..... TBA  
 NCAA Appearances ..... 23 (Last: 2016)  
 NCAA Final Four Appearances ..... Seven (Last: 2015)  
 NCAA National Championships ..... One (2001)

### NOTRE DAME-BOSTON COLLEGE HISTORY

- Notre Dame leads the all-time series between the "Power 5" only two Catholic schools, 18-5. The Irish have won each of the last eight meetings between the foes, marking the longest winning streak in the series.
- Boston College is one of Notre Dame's two ACC "crossover" opponents (along with Georgia Tech) where the teams annually play a home-and-home series as opposed to just a single contest yearly. Boston College will make its annual trip to Notre Dame on Feb. 23 for Senior Night.
- Despite being members of two conferences together, the BIG EAST and the ACC, the teams have met once in postseason play and that was not in a conference tournament. The Eagles best the Irish, 78-61, in the first round of the 2006 NCAA Championship at Purdue's Mackey Arena.
- Four of Boston College's five wins over the Irish have come in Chestnut Hill with the other being the NCAA Championship meeting in West Lafayette, Indiana. The Eagles have yet to win a game at Notre Dame in 11 tries.
- Last year Notre Dame swept the two meetings with Boston College. On Jan. 14 in Chestnut Hill, **Marina Mabrey** came off the bench to score a team-high 14 points while **Brianna Turner** chipped eight points, 13 rebounds and four blocks into a 63-50 win. On Feb. 27 at Notre Dame, **Madison Cable**'s 20 points led the Irish to a 70-58 victory which clinched its third-straight ACC regular season title.

### McGRAW CLOSES IN ON 750 WINS AT NOTRE DAME

- The Women's Basketball Hall of Fame career of **Muffet McGraw** is approaching yet another milestone as she closes in on her 750th win at Notre Dame.
- She is one of just four women (and seven overall) to win at least 748 women's basketball games at a single Division I school, joining Pat Summitt (1,098 wins at Tennessee), Tara VanDerveer (843 wins at Stanford) and Jody Conradt (783 wins at Texas).
- McGraw's 836 career wins overall including her five years at Lehigh are the sixth-most all-time by a female Division I women's basketball coach (10th overall).
- All of the other women on these two charts are also enshrined in the Naismith Memorial Basketball Hall of Fame, an honor for which McGraw was a finalist in 2016.

### Winningest Div. I Female Coaches

No.	Name	Years	Record	Pct.
1.	Pat Summitt	1975-12	1098-208	.841
2.	Tara VanDerveer	1979-	995-228	.813
3.	Sylvia Hatchell	1976-	987-364	.731
4.	C. Vivian Stringer	1972-	977-379	.720
5.	Jody Conradt	1970-07	900-309	.744
6.	<b>Muffet McGraw</b>	<b>1982-</b>	<b>836-267</b>	<b>.758</b>

### Most Wins at One School By Women

No.	Name	Years	School	Wins
1.	Pat Summitt	1975-12	Tennessee	1098
2.	Tara VanDerveer	1985-95, 96-	Stanford	843
3.	Jody Conradt	1976-07	Texas	783
4.	<b>Muffet McGraw</b>	<b>1987-</b>	<b>Notre Dame</b>	<b>748</b>

### CONSISTENT WINNERS

- Notre Dame has been one of the best teams in the nation on an annual basis in recent vintage. Over the past six seasons (2011-12 through Tuesday night), only UConn (201) has won more games than Notre Dame's 192. Baylor has also claimed 192. Stanford (169) and Maryland (167) round out the top five.

## Series History

### Notre Dame Leads 18-5

Home: 11-0, Away: 7-4, Neutral: 0-1

Date	Site	Result	Score
12/30/83	Chestnut Hill, Mass.	L	55-59
1/6/96	Notre Dame, Ind.	W	80-51
1/7/97	Chestnut Hill, Mass.	W	61-57
2/12/97	Notre Dame, Ind.	W	91-64
1/17/98	Chestnut Hill, Mass.	L	76-78
12/30/98	Chestnut Hill, Mass.	L	65-78
2/3/99	Notre Dame, Ind.	W	74-59
2/5/00	Notre Dame, Ind.	W	72-59
2/3/01	Chestnut Hill, Mass.	W	81-65
2/10/02	Notre Dame, Ind.	W	60-44
1/29/03	Chestnut Hill, Mass.	L	48-76
1/31/04	Notre Dame, Ind.	W	52-50
2/2/05	Notre Dame, Ind.	W	64-57
2/15/05	Chestnut Hill, Mass.	W	54-47
3/19/06	W. Lafayette, Ind.	L	61-78
11/24/07	Notre Dame, Ind.	W	88-58
11/23/08	Chestnut Hill, Mass.	W	102-54
1/9/14	Notre Dame, Ind.	W	95-53
2/13/14	Chestnut Hill, Mass.	W	82-61
1/11/15	Notre Dame, Ind.	W	104-58
2/8/15	Chestnut Hill, Mass.	W	89-56
1/14/16	Chestnut Hill, Mass.	W	63-50
2/27/16	Notre Dame, Ind.	W	70-58

Series Scoring	Total	Average
Notre Dame	1,687	73.3
Boston College	1,370	59.6

**Current Win Streak:** Notre Dame - 8  
**Muffet McGraw vs. Boston College:** 17-4  
**Erik Johnson vs. Notre Dame:** 0-5  
**McGraw vs. Johnson:** 5-0  
**ND Biggest Win:** 48 (102-54 on 11/23/08)  
**BC Biggest Win:** 28 (76-48 on 1/29/03)  
**ND Longest Win Streak:** 8 (2007-present)  
**BC Longest Win Streak:** 2 (1998)

### THE TALE OF THE TAPE

	ND	BC
Overall/conference record	16-3/4-1	8-10/1-4
AP/WBCA-USA Today poll	6/9	NR/NR

### SCORING

Points scored per game	78.7	60.3
Points allowed per game	58.5	59.9
Field goal percentage	.492	.433
Three-point percentage	.399	.315
Free throw percentage	.693	.669

### REBOUNDING

Rebounds per game	40.5	35.7
Opponent rebs. per game	31.3	34.1
Rebounding margin	+9.2	+1.6

### OTHER

Assists per game	18.9	15.8
Turnovers per game	14.3	18.3
Assist/turnover ratio	1.3	0.9
Steals per game	9.7	6.3
Blocked shots per game	4.4	4.0

**IRISH DON'T STAY DOWN FOR LONG**

- One of the hallmarks of Notre Dame's recent run of success has been its ability to get back up after being knocked down.
- The Irish have not lost consecutive games in six years, stemming back to a Nov. 18, 2010, loss to No. 15 UCLA, 86-83 in double overtime, and a Nov. 21, 2010, loss at No. 9 Kentucky, 81-76.
- Including that loss to the Wildcats, followed up by a win against IUPUI, Notre Dame has bounced back to win its next contest following each of its last 21 losses.
- The Irish are 3-0 this year following a loss, downing No. 16 DePaul on Dec. 10, three days after losing to No. 1 UConn; beating Georgia Tech on Jan. 2, four days after losing at NC State; and beating Central Michigan to open the season after falling to Stanford in the 2016 NCAA Sweet 16.

**END OF THE ROAD IS NEAR**

- The Boston College game is the second of three road games in seven days for Notre Dame, joining contests at Tennessee (Jan. 16) and North Carolina (Jan. 22). Notably, it is the penultimate game in a stretch where the Irish will play 10 out of 12 games away from the comforts of Purcell Pavilion.
- This stretch began on Dec. 10 when the Irish embarked on the longest true road game string in school history, a six-game romp to DePaul (Dec. 10), Toledo (Dec. 18), Michigan State (Dec. 20), Chattanooga (Dec. 27), NC State (Dec. 29) and Georgia Tech (Jan. 2).
- Thankfully, Notre Dame has generally not been fazed when playing on the road. The Irish have compiled a 55-4 (.932) record on the road over the past five seasons. The loss at NC State (Dec. 29) snapped a 15-game road winning streak which is tied for the 12th-longest in NCAA history.
- Oddly, Notre Dame had to wait significantly to pass its first true road test. The Irish were one of the final 27 teams nationally to play a true road game in 2016-17, not breaking out their blue uniforms until a Nov. 30 contest at Iowa in the ACC/Big Ten Challenge.
- Once Notre Dame returns home, the Irish will be able to get comfortable there. The Irish will play four out of five games at home from Jan. 26-Feb. 12. Six of its final nine regular season contests will be contested at Purcell Pavilion.

**HOME COURT ADVANTAGE**

- When playing at home, Notre Dame has enjoyed its typical home court advantage as provided by its incredibly loyal lime green-glad fans. In the latest NCAA update, the Irish ranked fifth nationally in average attendance (8,244) and also fifth in total (74,200) home attendance. Notre Dame was second nationally for operating at 90.11% of capacity at 9,149 seat Purcell Pavilion at the Joyce Center, narrowly behind Gonzaga's 90.84%.
- This advantage has played itself out particularly notably in conference play. Notre Dame has won a school-record 36 consecutive home conference games, beginning with a 66-47 win over Providence College on Feb. 14, 2012, in BIG EAST play.
- Notre Dame is 26-0 at Purcell Pavilion in ACC play, going 8-0 in 2013-14, 2014-15 and 2015-16 while also picking up wins over Wake Forest on Jan. 5 and Pittsburgh on Jan. 12.
- The Irish offense has been notably more potent at home, averaging 84.6 points per game as opposed to 71.6 on the road. However, Notre Dame's defense has not missed a beat regardless of venue posting remarkably similar numbers. The Irish have held foes to 58.6 points per game and .380

shooting at home while permitting 60.0 points per game and .388 shooting on the road.

**IRISH AMONG TOP SHOOTING TEAMS**

- *NCAA leaders below are from the Tuesday, Jan. 17 update.*
- Notre Dame has proved to be one of the best shooting teams in the nation this season. The Irish stand fifth in field goal percentage at 49.2 and sixth in 3-point field goal percentage at 39.9. It has added up to a team ranked 19th in scoring offense at 78.7 points per game. Notre Dame, UConn, Washington and Baylor are the only teams in the top 10 for both field goal and 3-point field goal percentage
- Some other team categories where the Irish collectively excel and rank in the top 25 include assists (5th with 359), assists per game (7th at 18.9), assist to turnover ratio (11th at 1.32), scoring margin (10th at +20.2), rebounding margin (16th at +9.2) and rebounds (23rd at 769).
- Two-time Nancy Lieberman Award finalist **Lindsay Allen** has made a quick claim to her status as the country's top point guard, not only in how she keeps the Irish under control, but also for her passing ability. Allen is fourth nationally with 137 assists and seventh with 7.2 assists per game. Allen is currently third with an assist-to-turnover ratio of 3.61 and led the nation in this field entering the Dec. 20 game at Michigan State. She leads the ACC in all three categories as well.
- Allen's 696 career assists rank second among active players behind only Northwestern's Ashley Deary who has 712.
- Allen is also 60th nationally in steals (41) and 48th in minutes played (624).
- **Brianna Turner** has shot the ball well this year and stands 24th nationally with her field goal percentage of 57.3%. Her recent surge has also left her 24th nationally in blocked shots with 39.
- **Arike Ogunbowale** has already claimed an espnW National Player of the Week honor and an ACC Player of the Week accolade. Her 3-point shooting, instrumental to each award, ranks as the country's best. Ogunbowale entered the Valparaiso game tied for first nationally with a 60.9% shooting percentage from downtown. Unfortunately, she has no longer taken the minimum number of shots to qualify. She does stand 57th nationally with 102 field goals made.

**FAST STARTS KEY**

- Notre Dame has been at its best this year when getting off to a fast start to games. Out of the four quarters of a game, Notre Dame has scored the most points (405), allowed the fewest points (257) and thus has the widest scoring margin (+148) in the first quarter of any single stanza.
- In 19 games this year, Notre Dame has only trailed twice after 10 minutes of play. Not completely by coincidence, those two games (UConn and NC State) are the team's only two losses.
- The Irish have held a lead after the first quarter in 16 of their 19 games while standing tied with TCU, 22-22, after the first quarter of an eventual Notre Dame win on Nov. 26.
- This trend extends back to last season when the NCAA switched from halves to quarters. The 2015-16 Irish scored 719 first quarter points - the most of any 10-minute segment. Last year's team saw its lowest quarterly defensive output and scoring margin totals still come in the first half of games, but in the second quarter.

**Around the ACC (Jan. 17)**

**ACC Standings**

Team	Conf.	Overall
Florida State (7/7)	5-1	17-2
<b>NOTRE DAME (6/9)</b>	<b>4-1</b>	<b>16-3</b>
Virginia Tech (17/16)	3-1	16-1
Louisville (9/8)	4-2	16-4
NC State (21/21)	4-2	14-5
Syracuse (RV/24)	4-2	13-6
Duke (15/16)	3-2	15-3
Miami (14/14)	3-3	14-4
Georgia Tech	2-2	13-4
Pittsburgh	2-3	11-7
Wake Forest	1-3	10-7
Virginia	1-3	12-5
Boston College	1-4	8-10
North Carolina	1-4	12-6
Clemson	0-5	11-7

**ACC Preseason Predictions**

**2016-17 Predicted Order of Finish (First Place Votes)**

	Blue Ribbon Panel	Coaches
1.	<b>Notre Dame (44)</b>	<b>Notre Dame (13)</b>
2.	Louisville (8)	Louisville (1)
3.	Florida State (2)	Florida State (1)
4.	Syracuse	Syracuse
5.	Miami	Miami
6.	Duke	Duke
7.	NC State	NC State
8.	North Carolina	Georgia Tech
9.	Georgia Tech	North Carolina
10.	Virginia	Virginia
11.	Wake Forest	Wake Forest
12.	Virginia Tech	Virginia Tech
13.	Pittsburgh	Boston College
14.	Boston College	Pittsburgh
15.	Clemson	Clemson

**Blue Ribbon & Coaches Preseason Player of the Year**  
Myisha Hines-Allen, Jr., F, Louisville

**2016-17 Blue Ribbon Panel Preseason All-ACC Team**

Rebecca Greenwell, R-Jr., G, Duke  
Leticia Romero, Sr., G, Florida State  
Shakayla Thomas, Jr., G, Florida State  
Asia Durr, So., G, Louisville  
Myisha Hines-Allen, Jr., F, Louisville  
Mariya Moore, Jr., F, Louisville  
Adrienne Motley, Sr., G, Miami  
**Lindsay Allen, Sr., G, Notre Dame**  
**Brianna Turner Jr., F, Notre Dame**  
Alexis Peterson, Sr., G, Syracuse

**2016-17 Coaches Preseason All-ACC Team**

Rebecca Greenwell, R-Jr., G, Duke  
Leticia Romero, Sr., G, Florida State  
Shakayla Thomas, Jr., G, Florida State  
Myisha Hines-Allen, Jr., F, Louisville  
Mariya Moore, Jr., F, Louisville  
Asia Durr, So., G, Louisville  
Adrienne Motley, Sr., G, Miami  
**Brianna Turner, Jr., F, Notre Dame**  
**Lindsay Allen, Sr., G, Notre Dame**  
Alexis Peterson, Sr., G, Syracuse

**2016-17 Blue Ribbon Panel Newcomer Watch List**

Lexie Brown, Jr., G, Duke  
Leaonna Odom, Fr, F, Duke  
Chatrice White, Jr., C, Florida State  
**Erin Boley, Fr., F, Notre Dame**  
**Jackie Young, Fr., G, Notre Dame**

**2016-17 Coaches Newcomer Watch List**

Lexie Brown, Jr., G, Duke  
Leaonna Odom, Fr, F, Duke  
Chatrice White, Jr., C, Florida State  
**Erin Boley, Fr., F, Notre Dame**  
**Jackie Young, Fr., G, Notre Dame**

**Associated Press Poll  
(Jan. 16)**

Rk.	Team (1st-place votes)	Record	Points	Lst Wk.
1	• Connecticut (33)	16-0	825	1
2	Baylor	17-1	786	2
3	Maryland	17-1	744	3
4	Mississippi State	18-0	728	4
5	South Carolina	15-1	696	5
<b>6</b>	<b>Notre Dame</b>	<b>16-2</b>	<b>668</b>	<b>6</b>
7	• Florida State	17-2	628	7
8	• Washington	18-2	591	8
9	• Louisville	16-4	528	9
10	Stanford	15-3	489	13
11	Oregon State	16-2	482	10
12	Texas	12-4	422	16
13	UCLA	13-4	415	17
14	• Miami (Fla.)	14-4	401	14
15	• Duke	15-3	367	12
16	Ohio State	15-5	348	11
17	• Virginia Tech	15-1	322	15
18	Arizona State	13-4	265	19
19	• DePaul	16-4	230	21
20	Oklahoma	14-4	202	22
21	• NC State	14-5	140	23
22	Kansas State	14-4	121	25
23	South Florida	14-2	102	20
24	West Virginia	14-4	78	18
25	Texas A&M	14-4	42	NR

**Others receiving votes:** • Green Bay 35, • Syracuse 21, California 20, Michigan 12, LSU 6, Kentucky 4, Northwestern 2, Temple 2, Drake 1, • Georgia Tech 1, Texas Tech 1.

**USA Today Coaches Poll  
(Jan. 17)**

Rk.	Team (1st-place votes)	Points	Rec.	Lst. Wk.
1	• Connecticut (32)	800	16-0	1
2	Baylor	762	17-1	2
3	Maryland	722	17-1	3
4	Mississippi State	706	19-0	4
5	South Carolina	687	15-1	5
6	• Florida State	628	17-2	7
7	• Washington	597	18-2	9
8	• Louisville	551	16-4	8
<b>9</b>	<b>Notre Dame</b>	<b>542</b>	<b>16-3</b>	<b>6</b>
10	Stanford	504	15-3	12
11	UCLA	475	13-4	13
12	Oregon State	464	16-2	10
13	Ohio State	370	15-5	11
14	• Miami (Fla.)	368	14-4	14
14	Texas	368	12-4	17
16	• Duke	283	15-3	15
16	• Virginia Tech	283	16-1	16
18	• DePaul	259	16-4	20
19	Arizona State	254	13-4	18
20	Oklahoma	143	14-4	25
21	• NC State	139	14-5	22
22	South Florida	132	14-2	21
23	West Virginia	80	14-4	19
24	• Syracuse	66	13-6	24
25	• Green Bay	52	15-2	NR

**Others Receiving Votes:** California 40; Michigan 26; Kansas State 21; • Tennessee 18; Texas A&M 16; • Michigan State 15; Temple 14; Northwestern 8; Oklahoma State 4; Creighton 2; Tulane 1.

**Notre Dame in the Polls**

Date	AP	Coaches
Preseason	1	2
November 14	1	1
November 21	1	1
November 28	1	1
December 5	2	1
December 12	2	2
December 19	2	2
December 26	2	2
January 2	7	6
January 9	6	6
January 16	6	--

**GETTING A LEAD AND KEEPING IT**

• Tennessee accomplished a rare feat in rallying back from a 44-31 halftime deficit to upset Notre Dame on Monday night at Thompson-Boling Arena. The game snapped a streak of 157 consecutive wins for the Irish when leading at halftime.

• The last time the Irish had previously led a game after 20 minutes but did not win the contest came on Feb. 12, 2012, when Notre Dame led West Virginia 33-30 at intermission but would go on to lose to the Mountaineers, 65-63.

• This trend is not a new one for the Irish. Notre Dame is 393-20 (.952) since 2000-01 when leading at the half, including a 16-1 mark this season.

**ANOTHER NICE 19-GAME START FOR IRISH**

• The 2016-17 Irish stand at 16-3 on the year. This high rate of success is not uncommon.

• This is the sixth consecutive year where Notre Dame has started a season 16-3 or better.

• The 2010-11 team was the last one to win less than 16 of its first 19 games and that squad stood at a solid 15-4 at this mid-season juncture.

**CONSISTENT ACC SUCCESS FOR IRISH**

• Since joining the ACC for the 2013-14 season, Notre Dame has been the league's top program, compiling a 51-2 regular season record and winning three consecutive regular season and tournament championship doubles.

• The first loss came at Miami on Jan. 8, 2015, and the Irish won all 29 regular season games and 35 games in a row vs. ACC teams including conference tournament play until the Dec. 29 loss at NC State.

• The 35-game ACC streak including tournament games is the 15th-longest in NCAA history and the second-longest in ACC history behind a 51-game run by Duke from 2001-04.

• The 29-game ACC regular season winning streak is the 24th-longest such streak in NCAA history and the second-longest in ACC history behind just a 42-game run by Duke from 2001-04.

• The Irish maintain an active streak of 26 consecutive home wins in ACC play, part of an overall streak of 36 consecutive home league wins including the final years of Notre Dame's BIG EAST membership.

**Longest Conf. Win Streaks (Inc. Tourn.)**

No.	Name	Conf.	Years	Wins
1.	Texas	Southwest	1981-90	143
...				
11.	Duke	ACC	2001-04	51*
12.	Coppin State	MEAC	2005-07	49
13.	Maine	America East	1995-98	41
14.	Vermont	NAC/America East	1991-94	36
<b>15.</b>	<b>Notre Dame</b>	<b>ACC</b>	<b>2015-16</b>	<b>35</b>

\* ACC Record

**MCGRAW NOMINATED FOR HALL OF FAME**

• Already enshrined in the Women's Basketball Hall of Fame, **Muffet McGraw** took a step towards the sport's ultimate lifetime honor on Dec. 21 as she was included on the list of nominees for the Naismith Memorial Basketball Hall of Fame's Class of 2017.

• A finalist for enshrinement in 2016, McGraw joins a star-studded field which will be pared to a list of finalists to be announced on Feb. 18 at the NBA All-Star Game in New Orleans and then ultimately to the list of enshrinees, to be announced on April 3 at the men's Final Four in Arizona.

**2016-17 Honors**

**Lindsay Allen, Sr., G**

- ▶ Wooden Award Midseason Top 25
- ▶ Preseason WNIT All-Tournament Team
- ▶ Naismith Trophy Watch List
- ▶ Wade Award Watch List
- ▶ Wooden Award Preseason Top 30
- ▶ Nancy Lieberman Award Watch List
- ▶ Senior CLASS Award Candidate
- ▶ Preseason espnW #10 player in the nation
- ▶ Preseason All-ACC (Blue Ribbon & Coaches)

**Erin Boley, Fr., F**

- ▶ ACC Newcomer Watch List (Blue Ribbon & Coaches)

**Arike Ogunbowale, So., G**

- ▶ espnW National Player of the Week (Nov. 21)
- ▶ Preseason WNIT Tournament MVP
- ▶ Preseason WNIT All-Tournament Team
- ▶ ACC Player of the Week (Nov. 14)
- ▶ Naismith Trophy Watch List

**Bianna Turner, Jr., F**

- ▶ Wooden Award Midseason Top 25
- ▶ ACC Player of the Week (Dec. 12)
- ▶ Preseason AP All-American
- ▶ Naismith Trophy Watch List
- ▶ Wade Award Watch List
- ▶ Wooden Award Preseason Top 30
- ▶ Preseason espnW #2 player in the nation
- ▶ Preseason All-ACC (Blue Ribbon & Coaches)

**Jackie Young, Fr., G**

- ▶ ACC Freshman of the Week (Dec. 5)
- ▶ ACC Newcomer Watch List (Blue Ribbon & Coaches)

**Muffet McGraw**

- ▶ Naismith Basketball Hall of Fame Nominee
- ▶ Wooden Legends of Coaching Award

• McGraw, who guided the Irish to the 2001 national championship and seven Final Four appearances, is the winningest single-sport coach in Irish lore with 746 wins. Over her 30-year coaching career, McGraw is 836-267 (.758), making her the sixth-winningest active coach nationally and the 10th-winningest all-time at the Division I level.

• She is the 2017 recipient of the Wooden Awards' Legends of Coaching Award, becoming just the third female to receive this honor, joining Tennessee's Pat Summitt and Stanford's Tara VanDerveer. She is the fourth women's coach to be recognized with this honor, joining Summitt, VanDerveer and UConn's Geno Auriemma.

• Among her many accomplishments, McGraw is one of five coaches (men's or women's) in Division I history with 800 wins, seven Final Fours and five NCAA title game appearances, joining the elite company of Summitt, Auriemma, Duke men's coach Mike Krzyzewski and the late North Carolina men's coach Dean Smith, all of whom are enshrined in the Naismith Memorial Basketball Hall of Fame.

• She is also the only coach to be named the consensus national coach of the year three times, sweeping the Associated Press, Women's Basketball Coaches Association, Naismith Award and United States Basketball Writers Association honors in 2001, 2013 and 2014.

**McGraw Radio Show Returns Jan. 23**

- For the first time, **Muffet McGraw** has her own local radio show as the Muffet McGraw Show Presented by TireRack.com debuted Jan. 9 at O'Rourke's Public House, conveniently located in Eddy Street Commons, across the street from Notre Dame's campus.
- The hour-long show, which begins at 6 p.m., is hosted by **Bob Nagle**, now in his 12th year as the radio voice of the Irish women's basketball team. It is broadcast live locally on 92.1 Pulse FM and also available over the internet at WatchND.tv. The shows are archived as Notre Dame Athletics Podcasts which are presented by Nissan.
- Each episode will also feature interviews with a current student-athlete, a member of the Irish coaching staff and also a feature on a select former player. Fans will have an opportunity to ask questions of coach McGraw and her guests along with winning prizes.
- Five shows, all on Monday nights, are planned for the 2016-17 season with the dates being Jan. 9, Jan. 23, Feb. 13, Feb. 20 and Feb. 27.

**IRISH ROUTINELY PLAY THE BEST**

- Notre Dame ranks second in nation in the NCAA's strength of schedule measure as its opposition has combined for a .742 winning percentage. That mark is outdistanced only by UConn's .770.
- This trend should continue with the rigors of ACC play. Measuring both past and future opponents, Notre Dame's .734 opponents' winning percentage is the best nationally, ahead of second place UConn's 723.
- Prior to the Dec. 27 game at four-time defending Southern Conference champion Chattanooga, every team Notre Dame had faced this year entered the game with both a winning record and no more than three losses, including seven undefeated teams.
- As a curious function of opening the season with the 16-team bracketed Preseason WNIT, along with winning each contest itself, each of Notre Dame's first six games this year saw a matchup of undefeated teams.
- UConn was the seventh undefeated team the Irish faced in the first nine games this season - all of which saw Notre Dame come into the contest undefeated as well.
- Notre Dame opened 2016-17 by facing six similarly undefeated schools in Central Michigan (0-0), Fordham (1-0), Green Bay (2-0), Washington (3-0), Louisiana-Lafayette (1-0) and TCU (4-0), defeating each of them.
- The Nov. 30 game at then-5-2 Iowa in the ACC/Big Ten Challenge was the first for the Irish this season against a team which had previously lost a game.

**11 WAS HEAVEN**

- The Dec. 20 game at Michigan State marked the first one this year when all 11 players were available to play and the first where all 11 saw game action.
- Although limited as she continues to recover from an ankle sprain suffered on Dec. 7 against UConn, **Jackie Young** checked back into the Irish lineup late in the first quarter at the Breslin Center for the first time since UConn game.
- Young played just two minutes and did not record any statistics before yielding to her still-sore ankle. Fellow former Indiana Miss Basketball **Ali Patberg** continued her recovery from the after-effects of a virus at Michigan State as she played the game's final minute. Patberg did not play from Nov. 17 until Dec. 18.

• The Irish were able to make it consecutive games working all 11 players into the game on Dec. 27 at Chattanooga before the available roster dipped back down to 10 due to an injury and later illness to **Diamond Thompson**.

**BASKETBALL U?**

- Notre Dame is one of five schools whose men's and women's basketball teams are both ranked in the AP top 15 as of Jan. 9, joining Baylor, Florida State, Louisville and UCLA.
- Notre Dame was the last school in the nation whose women's and men's basketball programs were both undefeated.
- Curiously, both teams were finally handed their first losses by the top-ranked school and defending national champion from their respective genders.
- The Irish women's team stood at 8-0 before falling to No. 1 UConn on Dec. 7. Notre Dame's men's team was 9-0 before losing to No. 1 Villanova on Dec. 10 in Newark, New Jersey.
- The dual dominance was best displayed on Dec. 4 as the teams combined to sweep a home doubleheader by a 114-point margin. Notre Dame's women's team began the twin-bill with a 114-54 win over Valparaiso while the Irish men provided a 107-53 victory over North Carolina A&T in the nightcap.

**REMEMBERED FOR CENTURIES**

- Notre Dame has not only hit the century mark twice thus far in 2016-17, but the Irish have twice tallied at least 107.
- The Irish beat Central Michigan, 107-57, on Nov. 11 and downed Valparaiso, 114-54, on Dec. 4.
- The last time Notre Dame twice scored at least 107 points in a season came in 2011-12 when the Irish beat Mercer, 128-42, and Pittsburgh, 120-44.
- The 114 points scored against Valparaiso ties for the 12th-highest scoring output in the nation this year. Baylor has the high (as of Jan. 17) from their 140-32 win over Winthrop on Dec. 15. Notre Dame is tied with Northern Illinois' 114-104 2OT win over Milwaukee on Nov. 16.

**ALLEN ASSIST CHART WATCH**

- **Lindsay Allen**'s name appears countless places in Notre Dame's record book and she moved up one rung on a major career-leaders chart on Dec. 27 at Chattanooga. Her 12 assists against the Mocs gave her 656 in her career assists, moving up to fourth in school history. She now boasts 696.
- Allen has reached this total at a clip of 5.3 assists per game - ranking third in Irish lore behind just **Mary Gavin** (7.0) and **Niele Ivey** (5.5).
- Allen not only is leaving an impact on the Notre Dame records, but, as a part of the first class of four-year ACC Irish players, she is also historically doing it in conference history. Allen stands fifth in ACC history for the most career assists.

**ND Career Assist Leaders**

No.	Name	Years	Assists
1.	Mary Gavin	1984-88	778
2.	Skyilar Diggins	2009-13	745
3.	Niele Ivey	1996-01	727
4.	<b>Lindsay Allen</b>	<b>2013-</b>	<b>696</b>
5.	Mollie Peirick	1994-97	651

**ACC Career Assist Leaders**

No.	Name, School	Years	Assists
1.	Sharnae Zoll, Virginia	2004-08	785
2.	Kristi Toliver, Maryland	2005-09	751
3.	Dawn Staley, Virginia	1989-92	729
4.	Nikki Teasley, UNC	1998-00, 02	728
5.	<b>Lindsay Allen, ND</b>	<b>2013-</b>	<b>696</b>

**Notre Dame's Record When...**

**Day of the Week**

Sunday .....	4-0
Monday .....	2-1
Tuesday .....	3-0
Wednesday .....	1-1
Thursday .....	3-1
Friday .....	1-0
Saturday .....	2-0

**Time of Game**

Day games (before 6 p.m. local time) .....	5-0
Night games (6 p.m. or later local time) .....	11-3

**Location**

Home games .....	8-1
Road games .....	7-2
Neutral site games .....	1-0

**Halftime score**

Leading at the half .....	16-1
Tied at the half .....	0-1
Trailing at the half .....	0-1

**Individual scoring**

Two or fewer double-figure scorers .....	1-2
Three double-figure scorers .....	3-0
Four double-figure scorers .....	9-1
Five or more double-figure scorers .....	3-0

**Rebounding margin**

Grab more rebounds than opponents .....	13-0
Grab same number of rebounds .....	1-1
Grab fewer rebounds than opponents .....	2-2

**Field goal shooting**

Higher pct. than opponent .....	14-1
Same pct. as opponent .....	0-0
Lower pct. than opponent .....	2-2
Shoot 45% or better .....	10-1
Shoot less than 45% .....	6-2
Hold opponent under 40% .....	11-0

**Free throw margin**

Make more free throws .....	12-0
Make same number of free throws .....	2-0
Make fewer free throws .....	2-3

**Turnovers**

Commit fewer turnovers .....	12-1
Commit same number of turnovers .....	0-0
Commit more turnovers .....	4-2

**Uniform Combinations**

In white jerseys with blue trim .....	9-0
In white jerseys with green trim .....	0-1
In blue jerseys .....	7-1
In green jerseys .....	0-1

**Miscellaneous**

Vs. Top 25 (AP or WBCA/USA Today polls) .....	3-1
When ranked higher .....	16-2
When ranked lower .....	0-1
On commercial television .....	5-2
In overtime games .....	0-0

**Margin of Victory**

1-5 points .....	1-1
6-10 points .....	0-1
11-15 points .....	4-1
16-20 points .....	4-0
21+ points .....	7-0

**Month**

November .....	7-0
December .....	5-2
January .....	4-1
February .....	0-0
March .....	0-0
April .....	0-0

## Irish Specialty Stats

Date	Opp.	Paint	OffTO	2ndCh	FBreak	Bench
11/11	CMU	46/16	31/10	11/7	8/2	39/17
11/14	Fordham	42/16	17/11	11/2	4/0	18/9
11/17	Green Bay	28/24	18/5	12/5	6/2	8/22
11/20	Wash.	32/22	19/5	10/9	6/0	13/18
11/22	v. ULL	58/19	24/16	22/4	10/0	27/7
11/26	TCU	36/26	16/11	23/3	4/2	24/10
11/30	@Iowa	42/26	21/12	9/11	10/4	16/12
12/4	Valpo	70/16	50/14	13/4	28/6	49/24
12/7	UConn	30/42	16/20	14/15	6/10	15/4
12/10	@DePaul	40/24	13/23	12/6	5/8	19/8
12/18	@Toledo	44/28	26/21	7/9	8/0	16/29
12/20	@MSU	48/26	8/9	15/7	8/13	17/19
12/27	@UTC	54/22	16/20	18/12	6/0	18/12
12/29	@NCSU	30/24	16/17	11/11	7/11	7/12
1/2	@GT	32/18	14/10	5/11	8/0	12/19
1/5	WF	48/16	29/14	9/9	10/2	21/9
1/8	@Miami	34/28	23/16	14/12	11/4	13/20
1/12	Pitt	34/10	22/12	15/2	2/0	39/23
1/16	@Tenn.	36/32	7/11	10/14	10/4	15/8

\*Notre Dame is listed first in each column

### Season Totals

Points in the Paint	Total	Average
Notre Dame	784	41.3
Opponents	435	22.9

Points Off Turnovers	Total	Average
Notre Dame	396	20.8
Opponents	257	13.5

Second Chance Points	Total	Average
Notre Dame	239	12.6
Opponents	153	8.1

Fast Break Points	Total	Average
Notre Dame	157	8.3
Opponents	68	3.6

Bench Scoring	Total	Average
Notre Dame	386	20.3
Opponents	264	13.9

### TURNER SWATS AWAY 200TH SHOT

• As a part of a six-block night at Chattanooga on Dec. 27, junior **Brianna Turner** recorded her 200th career blocked shot when she rejected Jasmine Joyner's shot with 8:19 left in the third quarter for her fourth block of the game.

• Turner is the third Irish player with 200 career blocks, joining **Ruth Riley** (370) and **Devereaux Peters** (227).

• Turner ranks 11th among all active players nationally with her 216 career blocks and third among juniors.

• Additionally, Turner's 216 blocks rank 13th in ACC history with the next hurdle being the moving target of Syracuse's Briana Day who currently has 221 in her on-going Orange career. The next fixed benchmark is the 11th-place post held by Dolores Bootz for Georgia Tech with 245 from 1985-88.

• Turner has found her shot-blocking form of late. After swatting away just 14 shots over Notre Dame's first 11 games, she has recorded 25 blocks in the past eight games, an average of 3.1 per game and more in line with her career average of 2.6 blocked shots per game.

### ND Career Blocked Shot Leaders

No.	Name	Years	Points
1.	Ruth Riley	1997-01	370
2.	Devereaux Peters	2007-12	227
3.	<b>Brianna Turner</b>	<b>2014-</b>	<b>216</b>

### TURNER CAN'T MISS

• Junior **Brianna Turner** is seldom shy about shooting the ball, taking 787 shots to date in her 83-game Irish career (9.5 shots per game). Where she has been historically great though is her conversion rate on her shots.

• Turner has connected on 481 of her 787 career field goal attempts for a .611 percentage. This success rate stands second in Irish lore (trailing just **Ruth Riley's** .632) and fourth in ACC history.

• Turner is the only player to rank among top 10 in the nation in field goal percentage each of the past two seasons. She led the nation as a freshman at .652 and ranked fifth her sophomore year at .593.

### ND Career Field Goal Pct. Leaders

No.	Name	Years	Points
1.	Ruth Riley	1997-01	.632
2.	<b>Brianna Turner</b>	<b>2014-</b>	<b>.611</b>
3.	Katryna Gaither	1993-97	.610

### ACC Career Field Goal Pct. Leaders

No.	Name, School	Years	FG%
1.	Carolyn Swords, BC	2007-11	.676
2.	Crystal Langhorne, Maryland	2004-08	.652
3.	Tyish Hall, Duke	1994-97	.630
4.	<b>Brianna Turner, ND</b>	<b>2014-</b>	<b>.611</b>
5.	Jenny Mitchell, Wake Forest	1988-91	.607

### MATCHING MILLENNIAL MILESTONES

• Less than two minutes into the Iowa game on Nov. 30, **Brianna Turner** became the 36th player in Irish lore to crack the 1,000 career point plateau when **Marina Mabrey** lobbed a pass over the arms of a defender in the paint.

• **Lindsay Allen** had previously hit the 1,000-point marker this season during the game on Nov. 17 against Green Bay.

• Notre Dame last had two players reach the 1,000 career point plateau in the same season in 2013 when **Kayla McBride** and **Natalie Achonwa** each hit the millennial mark. Seven other Irish teams also saw two players hit the milestone but the school record of three was set back in 1985 (**Trena Keys**, **Mary Beth Schueth** and **Carrie Bates**).

• Notre Dame has seen at least one player reach 1,000 career points in eight of the last nine years with the exception coming in 2014-15.

### ND Career Scoring Leaders

No.	Name	Years	Points
1.	Skylar Diggins	2009-13	2,357
2.	Beth Morgan (Cunningham)	1993-97	2,322
...			
25.	Heidi Bunek	1985-89	1,202
26.	Krissi Davis	1987-91	1,194
27.	<b>Brianna Turner</b>	<b>2014-</b>	<b>1,185</b>
28.	Courtney LaVere	2002-06	1,150
29.	Becca Bruszewski	2007-11	1,148
30.	<b>Lindsay Allen</b>	<b>2013-</b>	<b>1,144</b>

### ALLEN ALWAYS THERE FOR IRISH

• Senior **Lindsay Allen** has proved to be both dependable and durable throughout her Irish career and those numbers are reflected in her standing on several Notre Dame career record charts. The point guard has never missed a start in her Notre Dame career and seldom even leaves the court. Six times this season (and 10 times in her career), Allen has played all 40 minutes of a game.

• Allen's streak of 131 consecutive starts has long since set a school record. The Pittsburgh game marked her 130th career start which moved her past **Alicia Ratay** (1999-03) for second in school history behind just the 144 games started by **Skylar Diggins** from 2009-13.

• Notre Dame boasts a 122-9 (.931) record in games started by Allen.

• Allen ranks seventh in school history with 3,899 career minutes played.

### ND Most Consecutive Starts

No.	Name	Dates	Starts
1.	<b>Lindsay Allen</b>	<b>11/9/13-</b>	<b>131</b>
2.	Jacqueline Batteast	1/26/02-3/21/05	97
3.	Katryna Gaither	12/27/94-3/30/97	95

### ND Career Games Started

No.	Name	Years	Starts
1.	Skylar Diggins	2009-13	144
2.	<b>Lindsay Allen</b>	<b>2013-</b>	<b>131</b>
3.	Alicia Ratay	1999-03	129

### ND Career Minutes Played

No.	Name	Years	Minutes
1.	Skylar Diggins	2009-13	4,639
2.	Alicia Ratay	1999-03	4,231
3.	Megan Duffy	2002-06	4,188
4.	Beth Morgan (Cunningham)	1993-97	3,958
5.	Niele Ivey	1996-01	3,954
6.	Jacqueline Batteast	2001-05	3,901
7.	<b>Lindsay Allen</b>	<b>2013-</b>	<b>3,899</b>

### ALLEN TRIPLE TROUBLE FOR MOCS

• At Chattanooga on Dec. 27, senior **Lindsay Allen** recorded the sixth triple-double in Notre Dame history, scoring 11 points, grabbing a career-high 11 rebounds and matching her career high with 12 assists. Remarkably, the two-time Nancy Lieberman Award finalist and 1,000-point scorer had never previously recorded so much as a double-double.

• Allen was the first player in the ACC to record a triple-double so far in 2016-17 and remains one of just two to do so, joining Louisville's Mariya Moore (Dec. 29 vs. Syracuse).

• **Marina Mabrey** recorded a triple-double last year at Valparaiso. The NC State game marked the first time the Irish have ever put a lineup on the court featuring two players who each have a collegiate triple-double to their credit.

### ND Triple-Doubles

Player	Date	Opponent	Stats
Lindsay Allen	12/27/16	at Chattanooga	11p, 11r, 12a
Marina Mabrey	11/23/15	at Valparaiso	18p, 10a, 12s
Skylar Diggins	2/24/13	at DePaul	17p, 10r, 10a
Skylar Diggins	3/27/12	vs. Maryland*	22p, 10r, 11a
Sara Liebscher	2/15/90	vs. Detroit	17p, 12r, 10a
Mary Gavin	1/31/87	vs. Marquette	11p, 14a, 10s

\*NCAA Elite Eight (at PNC Arena, Raleigh, N.C.)

### PATTERSON NAMED McDONALD'S ALL-AMERICAN

• For the sixth consecutive year, the Notre Dame women's basketball program is congratulating one of its signees for their selection to the prestigious McDonald's All-American teams as Danielle Patterson (Brooklyn, New York / The Mary Louis Academy) is the latest future Irish student-athlete to earn this distinction.

• Patterson will be one of eight McDonald's All-Americans on next year's roster, matching a school record set this season as Patterson would replace the graduating Lindsay Allen (2013) on this honored roll. Patterson will join McDonald's All-American Game alumni Erin Boley (2016), Marina Mabrey (2015), Arike Ogunbowale (2015), Ali Patberg (2015), Brianna Turner (2014), Kathryn Westbeld (2014) and Jackie Young (2016) on the 2017-18 Notre Dame team.

• Notre Dame's other signee for next year, Mikayla Vaughn, is playing for the top team in the nation as her Paul VI High School in Fairfax, Virginia sits as the No. 1 team in the nation in the espnW, USA Today and MaxPreps polls. Vaughn was a nominee for the McDonald's All-American team for her leading role in helping the Panthers to a current run of 34 consecutive wins.

• Patterson, who averages 22 points, eight rebounds and four assists per game this season, becomes the 18th McDonald's All-American to join the Irish since the boys program was extended to include girls in 2002.

### Notre Dame McDonald's All-American Girls

- 2002 Courtney LaVere
- 2003 Crystal Erwin
- 2005 Lindsay Schrader
- 2007 Devereaux Peters
- 2009 Skylar Diggins
- 2010 Kayla McBride
- 2012 Jewell Loyd, Michaela Mabrey
- 2013 Lindsay Allen, Taya Reimer
- 2014 Brianna Turner, Kathryn Westbeld
- 2015 Marina Mabrey, Arike Ogunbowale, Ali Patberg
- 2016 Erin Boley, Jackie Young
- 2017 Danielle Patterson

### TURNER NAMED ACC PLAYER OF THE WEEK

• For **Brianna Turner**, two double-doubles against two ranked foes added up to one nice award as the junior forward was named the ACC's Player of the Week on Dec. 12.

• Facing No. 1 UConn on Dec. 7, Turner scored 16 points and grabbed 12 rebounds -- eight of them off of the offensive glass. Three nights later, on the road at No. 16 DePaul, Turner scored 14 points and added 11 rebounds. She blocked a pair of shots in each contest. Turner shot an even 50% for the week (11-for-22) from the floor and connected on eight of her nine free throw attempts.

• A preseason All-American, Turner has four double-doubles on the season including one in each of Notre Dame's three games this year against ranked opponents. In addition to her strong showings against both UConn and DePaul, Turner scored 10 points and added 12 rebounds in Notre Dame's win over No. 17 Washington in the championship game of the Preseason WNIT on Nov. 20.

• Her performance against UConn marked the first time the Huskies had allowed a double-double with at least 12 points and rebounds in nearly a year, dating back to when USF's Courtney Williams scored 26 and grabbed 13 boards on Jan. 11.

### YOUNG NAMED ACC ROOKIE OF THE WEEK

• Freshman **Jackie Young** collected the first of what could be many honors over the potential Irish career on Dec. 5 when she was named the ACC's Rookie of the Week.

• Young had a break-through game in the Dec. 4, 114-54, win over Valparaiso, scoring 20 points -- the high-water mark of her young Irish career. Young connected on eight of her nine shots in the contest and went 3-of-4 from 3-point range. She also had a career-high six steals against the Crusaders to go with five rebounds and three assists. Earlier in the week, on Nov. 30, Young tallied five points and grabbed three rebounds as the Irish claimed a 73-58 win at Iowa on Nov. 30 during the ACC/Big Ten Challenge.

### OH GOODNESS, OGUNBOWALE!

• The first round of the Preseason WNIT proved to be a banner night for sophomore **Arike Ogunbowale** who obliterated her previous career high of 21 by scoring 30 points in Notre Dame's Nov. 11 win over Central Michigan.

• Ogunbowale capped her four-game Preseason WNIT run by scoring 17 points while adding five rebounds, four steals and three assists in Notre Dame's win over No. 17 Washington.

• Her efforts over the event earned her both tournament MVP honors and espnW's National Player of the Week accolade.

• For her performance against the Chippewas, Ogunbowale was named the ACC's Player of the Week on Nov. 14.

• Ogunbowale hit all five of her 3-point attempts against CMU, a feat that had not been seen for the Irish in 16 years. Ogunbowale provided just the third game in Irish lore where a player took at least five 3-pointers and did not miss one.

**Alicia Ratay** sank all seven of her 3-point shots at Rutgers on Feb. 19, 2000, while **Sheila McMillen** went a perfect five-for-five behind the arc against UConn on Dec. 8, 1998.

• Her 12-of-13 from the floor narrowly missed becoming a school record for field goal percentage. **Karen Robinson** set that mark by going 12-for-12 at St. Louis on Jan. 14, 1989. It also marked the first time a Notre Dame player had hit the 30-point mark since **Jewell Loyd** tallied 31 at Georgia Tech on Feb. 19, 2015.

• Ogunbowale also had two steals, two assists and three rebounds on the night.

### IRISH HELD UNANIMOUS POLE POSITION

• Notre Dame received the No. 1 spot in the preseason Associated Press poll. Notre Dame stood at No. 2 in the preseason coaches poll but leapt up to No. 1 on Nov. 15, surpassing defending national champion Connecticut.

• Despite being undefeated, the Irish slipped back to No. 2 in the AP poll on Dec. 5.

• This year marked Notre Dame's first time holding the AP's top spot entering a season.

• The only other time the Irish sat atop the AP poll came during the 2001 season when Notre Dame earned the No. 1 ranking for a total of five weeks - four straight from Jan. 22 to Feb. 12, regaining it on March 5.

• Before this season, Notre Dame's last game as the No. 1-ranked team in the country was a 78-76 loss to No. 2 UConn, in the BIG EAST final on March 6, 2001, at Gampel Pavilion. The Irish, carrying the No. 2 ranking, avenged that defeat to the Huskies by beating them in the NCAA Final Four en route to claiming the national championship two days later with a win over Purdue.

• The Irish have made a habit of standing among the nation's elite in the AP poll. This week, Notre Dame is in the top 10 for the 214th time, surpassing North Carolina's 204 for the 10th-most AP top 10 appearances all-time. No. 3 Baylor is ninth at 219 (and counting).

• Notre Dame has now spent 142 weeks in the top five all-time, ranking eighth in AP poll history. Georgia is seventh with 145 weeks in the top five.

• Notre Dame has been ranked in the top 10 for each of the last 116 polls since a No. 11 ranking on Jan. 17, 2011.

### McGRAW GETS LEGENDS OF COACHING HONOR

• Now in her 30th year at Notre Dame and 35th as a collegiate head coach, **Muffet McGraw**'s legacy of success on the court is visible in the plethora of banners hanging above the Purcell Pavilion court. Her legacy of success off the court is plainly visible in the scores of Irish women's basketball alumni who have been successful in their professions and life.

• This dual-success has been recognized by the John R. Wooden Award Committee which on Oct. 11 announced McGraw as its 2017 Legends of Coaching Award recipient.

• The lifetime achievement award is presented to a singular college basketball coach who exemplifies Wooden's high standards of coaching success and personal achievement. The accolade is just the latest national honor for McGraw -- the only three-time consensus national coach of the year.

• An enshrine in the Women's Basketball Hall of Fame and a 2016 finalist for induction in the Naismith Memorial Basketball Hall of Fame, McGraw is the third woman to receive the Legends of Coaching Award -- an accolade first bestowed in 1999 upon Dean Smith of North Carolina. Its 18th recipient, McGraw joins Tennessee's Pat Summitt and Stanford's Tara VanDerveer as the lone female honorees.

### WHAT'S NEXT

• Notre Dame will fly home after the Boston College game and then head to North Carolina over the weekend for a noon game on Sunday against the Tar Heels. ESPNU will carry the game nationally with Beth Mowins and LaChina Robinson on the call. The game is one of seven Notre Dame contests between Jan. 8-Feb. 26 which will air on either ESPN2 or ESPNU.

## 2016-17 Notre Dame Women's Basketball Alphabetical Roster

No.	Name	Ht.	Pos.	Yr.	Hometown	Last Team (League)
15	Lindsay Allen	5-8	G	Sr.	Mitchellville, Md.	St. John's College
22	Erin Boley	6-2	F	Fr.	Hodgenville, Ky.	Elizabethtown HS
14	Mychal Johnson	5-7	G	Jr.	Huntington, W. Va.	Huntington St. Joseph HS
3	Marina Mabrey	5-11	G	So.	Belmar, N.J.	Manasquan HS
21	Kristina Nelson	6-4	F	Sr.	Buford, Ga.	Buford HS
24	Arike Ogunbowale	5-8	G	So.	Milwaukee, Wis.	Divine Savior Holy Angels HS
20	Ali Patberg	5-10	G	So.	Columbus, Ind.	Columbus North HS
35	Diamond Thompson	6-5	C	Sr.	Wheaton, Ill.	Wheaton Warrenville South HS
11	Brianna Turner	6-3	F	Jr.	Pearland, Texas	Manvel HS
33	Kathryn Westbeld	6-2	F	Jr.	Kettering, Ohio	Kettering Fairmont HS
5	Jackie Young	6-0	G	Fr.	Princeton, Ind.	Princeton Community HS

## 2016-17 Notre Dame Women's Basketball Numerical Roster

No.	Name	Ht.	Pos.	Yr.	Hometown	Last Team (League)
3	Marina Mabrey	5-11	G	So.	Belmar, N.J.	Manasquan HS
5	Jackie Young	6-0	G	Fr.	Princeton, Ind.	Princeton Community HS
11	Brianna Turner	6-3	F	Jr.	Pearland, Texas	Manvel HS
14	Mychal Johnson	5-7	G	Jr.	Huntington, W. Va.	Huntington St. Joseph HS
15	Lindsay Allen	5-8	G	Sr.	Mitchellville, Md.	St. John's College
20	Ali Patberg	5-10	G	So.	Columbus, Ind.	Columbus North HS
21	Kristina Nelson	6-4	F	Sr.	Buford, Ga.	Buford HS
22	Erin Boley	6-2	F	Fr.	Hodgenville, Ky.	Elizabethtown HS
24	Arike Ogunbowale	5-8	G	So.	Milwaukee, Wis.	Divine Savior Holy Angels HS
33	Kathryn Westbeld	6-2	F	Jr.	Kettering, Ohio	Kettering Fairmont HS
35	Diamond Thompson	6-5	C	Sr.	Wheaton, Ill.	Wheaton Warrenville South HS

### Coaches and Staff

Muffet McGraw: Karen and Kevin Keyes Family Head Women's Basketball Coach (St. Joseph's (Pa.) '77)

Carol Owens: Associate Head Coach (Northern Illinois '90)

Niele Ivey: Associate Head Coach / Recruiting Coordinator (Notre Dame '00)

Beth Cunningham: Associate Coach (Notre Dame '97)

Katie Capps: Director of Basketball Operations (Western Kentucky '02)

Erica Williamson: Video Coordinator (Notre Dame '10)

Sharla Lewis: Special Events Coordinator (Chicago State '99)

Anne Marquez: Athletic Trainer (West Florida '01)

### Pronunciation Key

3	Marina <b>MAY-bree</b>
11	<b>bree-ON-uh</b> Turner
22	Erin <b>BOH-lee</b>
24	<b>uh-REE-kay OH-goan-buh-WALL-ay</b>
--	<b>knee-ELL</b> Ivey

### By State

<b>GEORGIA</b>	
Kristina Nelson	Buford
<b>ILLINOIS</b>	
Diamond Thompson	Wheaton
<b>INDIANA</b>	
Ali Patberg	Columbus
Jackie Young	Princeton
<b>KENTUCKY</b>	
Erin Boley	Hodgenville
<b>MARYLAND</b>	
Lindsay Allen	Mitchellville
<b>NEW JERSEY</b>	
Marina Mabrey	Belmar
<b>OHIO</b>	
Kathryn Westbeld	Kettering
<b>TEXAS</b>	
Brianna Turner	Pearland
<b>WEST VIRGINIA</b>	
Mychal Johnson	Huntington
<b>WISCONSIN</b>	
Arike Ogunbowale	Milwaukee

### By Class

<b>SENIORS</b>		
Lindsay Allen	G	Mitchellville, Md.
Kristina Nelson	F	Buford, Ga.
Diamond Thompson	C	Wheaton, Ill.
<b>JUNIORS</b>		
Mychal Johnson	G	Huntington, W. Va.
Brianna Turner	F	Pearland, Texas
Kathryn Westbeld	F	Kettering, Ohio
<b>SOPHOMORES</b>		
Marina Mabrey	G	Belmar, N.J.
Arike Ogunbowale	G	Milwaukee, Wis.
Ali Patberg	G	Columbus, Ind.
<b>FRESHMEN</b>		
Erin Boley	F	Hodgenville, Ky.
Jackie Young	G	Princeton, Ind.

### By Position

<b>CENTER</b>		
Diamond Thompson	C	Wheaton, Ill.
<b>FORWARDS</b>		
Erin Boley	F	Hodgenville, Ky.
Kristina Nelson	F	Buford, Ga.
Brianna Turner	F	Pearland, Texas
Kathryn Westbeld	F	Kettering, Ohio
<b>GUARDS</b>		
Lindsay Allen	G	Mitchellville, Md.
Mychal Johnson	G	Huntington, W. Va.
Marina Mabrey	G	Belmar, N.J.
Arike Ogunbowale	G	Milwaukee, Wis.
Ali Patberg	G	Columbus, Ind.
Jackie Young	G	Princeton, Ind.



## Notre Dame Radio/TV Roster



**#3  
MARINA  
MABREY**  
5-11 | G | So.  
Belmar, N.J.  
Manasquan



**#5  
JACKIE  
YOUNG**  
6-0 | G | Fr.  
Princeton, Ind.  
Princeton Community



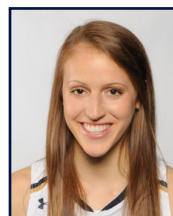
**#11  
BRIANNA  
TURNER**  
6-3 | F | Jr.  
Pearland, Texas  
Manvel



**#14  
MYCHAL  
JOHNSON**  
5-7 | G | Jr.  
Huntington, W.Va.  
Huntington St. Joseph



**#15  
LINDSAY  
ALLEN**  
5-8 | G | Sr.  
Mitchellville, Md.  
St. John's College



**#20  
ALI  
PATBERG**  
5-10 | G | So.  
Columbus, Ind.  
Columbus North



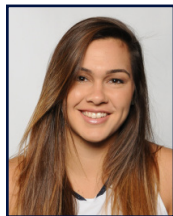
**#21  
KRISTINA  
NELSON**  
6-4 | F | Sr.  
Buford, Ga.  
Buford



**#22  
ERIN  
BOLEY**  
6-2 | F | Fr.  
Hodgenville, Ky.  
Elizabethtown



**#24  
ARIKE  
OGUNBOWALE**  
5-8 | G | So.  
Milwaukee, Wis.  
Divine Savior Holy Angels



**#33  
KATHRYN  
WESTBELD**  
6-2 | F | Jr.  
Kettering, Ohio  
Kettering Fairmont



**#35  
DIAMOND  
THOMPSON**  
6-5 | C | Sr.  
Wheaton, Ill.  
Wheaton Warrenville South

## Coaching and Support Staff



**MUFFET  
McGRAW**  
Head Coach  
30th Year at ND  
St. Joseph's '77



**CAROL  
OWENS**  
Assoc. Head Coach  
17th Year at ND  
N. Illinois '90



**NIELE  
IVEY**  
Assoc. Head Coach  
10th Year at ND  
Notre Dame '00



**BETH  
CUNNINGHAM**  
Associate Coach  
5th Year at ND  
Notre Dame '97



**KATIE  
CAPPS**  
Dir. of Basketball Ops.  
2nd Year at ND  
W. Kentucky '02



**ERICA  
WILLIAMSON**  
Video Coordinator  
1st Year at ND  
Notre Dame '10



**SHARLA  
LEWIS**  
Spec. Events Coord.  
6th Year at ND  
Chicago State '99



**ANNE  
MARQUEZ**  
Athletic Trainer  
11th Year at ND  
West Florida '01

## Miscellaneous Notre Dame Statistics

**LEADING SCORER**

Brianna Turner	4 (24)
Arike Ogunbowale	10 (17)
Marina Mabrey	5 (11)
Lindsay Allen	1 (7)
Kathryn Westbeld	0 (2)
Jackie Young	1 (1)

**LEADING REBOUNDER**

Brianna Turner	9 (46)
Kathryn Westbeld	5 (23)
Arike Ogunbowale	1 (6)
Lindsay Allen	2 (5)
Kristina Nelson	3 (3)
Mychal Johnson	1 (1)
Jackie Young	1 (1)
Diamond Thompson	0 (1)

**LEADER IN ASSISTS**

Lindsay Allen	17 (93)
Marina Mabrey	2 (4)
Kathryn Westbeld	0 (2)
Kristina Nelson	1 (1)
Mychal Johnson	0 (1)

**GAMES STARTED**

Lindsay Allen	19 (131)
Brianna Turner	19 (83)
Kathryn Westbeld	19 (52)
Marina Mabrey	18 (20)
Arike Ogunbowale	18 (18)
Mychal Johnson	2 (2)

**20-POINT SCORING GAMES**

<b>Opponents</b>	<b>4</b>
<b>Notre Dame</b>	<b>7</b>

Brianna Turner	2 (12)
Lindsay Allen	0 (7)
Marina Mabrey	2 (3)
Arike Ogunbowale	2 (3)
Jackie Young	1 (1)

**30-POINT SCORING GAMES**

<b>Opponents</b>	<b>1</b>
<b>Notre Dame</b>	<b>1</b>

Arike Ogunbowale	1 (1)
------------------	-------

**40-POINT SCORING GAMES**

<b>Opponents</b>	<b>0</b>
<b>Notre Dame</b>	<b>0</b>

**TECHNICAL/FLAGRANT FOULS**

<b>Opponents</b>	<b>0</b>
<b>Notre Dame</b>	<b>0</b>

Lindsay Allen	0 (2)
---------------	-------

**FOUR-POINT PLAYS**

<b>Opponents</b>	<b>1</b>
<b>Notre Dame</b>	<b>0</b>

**JUMP BALLS CONTROLLED**

<b>Opponents</b>	<b>3</b>
<b>Notre Dame</b>	<b>16</b>

Brianna Turner	16-19 (.842)
----------------	--------------

**FIRST SCORE**

<b>Opponents</b>	<b>4</b>
<b>Notre Dame</b>	<b>15</b>

Arike Ogunbowale	5
Brianna Turner	5
Marina Mabrey	3
Lindsay Allen	1
Kathryn Westbeld	1

**RUNS OF 10-0 OR BETTER**

<b>Opponents</b>	<b>5</b>
<b>Notre Dame</b>	<b>18</b>

**LARGEST HALFTIME LEAD**

49 vs. Valparaiso, 12/4/16

**LARGEST HALFTIME DEFICIT**

6 at NC State, 12/29/16

**LARGEST LEAD**

62 vs. Valparaiso, 12/4/16

**LARGEST DEFICIT**

19 at NC State, 12/29/16

**LARGEST DEFICIT**OVERCOME TO WIN  
5 at Toledo, 12/18/16**LARGEST LEAD**GIVEN UP IN LOSS  
15 vs. Tennessee, 1/16/17**LARGEST WIN**60 vs. Central Michigan, 11/11/16  
60 vs. Valparaiso, 12/4/16**LARGEST DEFEAT**

11 vs. UConn, 12/7/16

**MOST CONSECUTIVE PTS**

26 vs. Valparaiso, 12/4/16

**MOST CONSECUTIVE OPP PTS**

16 at NC State, 12/29/16

**LONGEST WINNING STREAK**

8 (Nov. 11-Dec. 4)

**LONGEST LOSING STREAK**

1 (Three times)

**LARGEST HOME CROWD**

9,149 vs. UConn, 12/7/16

**LARGEST ROAD CROWD**

10,517 at Tennessee, 1/16/17

**LARGEST NEUTRAL SITE CROWD**

767 vs. UL-Lafayette, 11/22/16

*NOTE: totals may not add up to games played due to ties ... figures in parentheses by player totals are career totals*

**Double-Figure Points**

	2016-17	Career
Brianna Turner	16	69
Lindsay Allen	10	52
Arike Ogunbowale	15	38
Marina Mabrey	11	33
Kathryn Westbeld	8	30
Jackie Young	5	5
Mychal Johnson	1	5
Erin Boley	4	4
Kristina Nelson	1	3

**Double-Figure Rebounds**

	2016-17	Career
Brianna Turner	5	23
Kathryn Westbeld	1	5
Lindsay Allen	1	1

**5-5-5 Games (aka "Stat Sheet Stuffers")**

	2016-17	Career
Lindsay Allen	9	29
Brianna Turner	3	14
Marina Mabrey	1	2
Jackie Young	1	1
Kathryn Westbeld	1	1
Kristina Nelson	1	1

*NOTE: At least 5 in three of five statistical categories (points, rebounds, assists, steals or blocks)*

**Double-Doubles**

	2016-17	Career
Brianna Turner	4	19
Kathryn Westbeld	1	3
Marina Mabrey	0	1

**Triple-Doubles**

	2016-17	Career
Lindsay Allen	1	1
Marina Mabrey	0	1

**Clutch Free Throws (final 5 min. + OT)**

	FT-FTA	Pct.
Mychal Johnson	3-3	1.000
Marina Mabrey	9-10	.900
Erin Boley	16-18	.889
Jackie Young	5-6	.833
Brianna Turner	3-4	.750
Lindsay Allen	8-15	.533
Kristina Nelson	6-12	.500
Diamond Thompson	1-2	.500
Arike Ogunbowale	0-2	.000
<b>'16-17 Team Totals</b>	<b>51-72</b>	<b>.708</b>

## The Last Time Notre Dame...

## SCORING

**Player scored 25 points:** Marina Mabrey (26) at Toledo, 12/18/16  
**Player scored 30 points:** Arike Ogunbowale (31) vs. Central Michigan, 11/11/16  
**Player scored 35 points:** see 40 points  
**Player scored 40 points:** Jewell Loyd (41) at DePaul, 12/10/14  
**Player came off bench and scored 20 points:** Jackie Young (20), vs. Valparaiso, 12/4/16  
**Two players scored 20 points:** Madison Cable (25) & Lindsay Allen (20) vs. Ohio State, 12/2/15  
**Three players scored 20 points:** Danielle Green (28), Sheila McMillen (26), Ruth Riley (23) vs. West Virginia, 1/7/99  
**Two players scored 25 points:** Jewell Loyd (26) & Kayla McBride (25) vs. Duke, 3/9/14 (@ Greensboro, N.C.)  
**Player scored 25 points/consecutive games:** Jewell Loyd (34 vs. Tennessee, 1/19/15; 29 vs. Georgia Tech, 1/22/15)  
**None in double figures:** at Seton Hall, 2/8/04  
**One in double figures:** Arike Ogunbowale (18) at Georgia Tech, 1/2/17  
**Six in double figures:** Jackie Young (20), Arike Ogunbowale (18), Marina Mabrey (16), Erin Boley (15), Brianna Turner (13), Kathryn Westbeld (10), vs. Valparaiso, 12/4/16  
**Seven in double figures:** see eight in double figures  
**Eight in double figures:** Devereaux Peters (20), Natalie Achonwa (19), Kaila Turner (14), Natalie Novosel (13), Skylar Diggins (11), Brittany Mallory (11), Kayla McBride (11) and Markisha Wright (11) vs. Pittsburgh, 1/17/12  
**ND scored 50 points/half:** See 55 points/half  
**ND scored 55 points/half:** 55 (1st half) vs. Wake Forest, 1/5/17  
**ND scored 60 points/half:** 72 (1st half) vs. Valparaiso, 12/4/16  
**ND scored 50 points in both halves:** 56 (1st) & 56 (2nd) vs. Central Michigan, 11/11/16  
**ND scored 100 points/game:** 114 vs. Valparaiso, 12/4/16  
**ND scored 100 points/home game:** 114 vs. Valparaiso, 12/4/16  
**ND scored 100 points/neutral site:** 100 vs. Duquesne, 12/1/13 (@ Toronto, Ontario)  
**ND scored 100 points/conference game:** 104 vs. Boston College, 1/11/15  
**ND scored fewer than 15 points/half:** 11 (1st half) at West Virginia, 1/13/08  
**ND scored fewer than 20 points/half:** 19 (1st half) at Connecticut, 1/16/10  
**ND scored fewer than 50 points/game:** 44 at Connecticut, 3/8/10

## FIELD-GOAL SHOOTING

**Player made every shot from the field (min. 7):** Taya Reimer (8-8) vs. Louisville, 2/23/15  
**ND shot 55 percent/game:** see 60 percent/game  
**ND shot 55 percent/consecutive games:** 62.1 (36-58) vs. DePaul, 12/9/15; 55.0 (33-60) at TCU, 12/12/15; 59.0 (36-61) at Saint Joseph's (Pa.), 12/21/15  
**ND shot 60 percent/game:** 60.0 (39-65) vs. Wake Forest, 1/5/17  
**ND shot 65 percent/game:** see 70 percent/game  
**ND shot 70 percent/game:** 70.2 (40-57) at Mercer, 12/30/11  
**ND shot below 25 percent/game:** 24.5 (13-53) at West Virginia, 1/13/08  
**ND shot below 30 percent/game:** 29.7 (22-74) vs. Connecticut, 4/7/13 (@ New Orleans, La.)  
**ND shot below 35 percent/game:** 33.3 (21-63) vs. Connecticut, 4/7/15 (@ Tampa, Fla.)  
**ND shot below 50 percent/game and won:** 34.8 (23-66) vs. South Florida, 3/10/13 (@ Hartford, Conn.)  
**ND shot 55 percent/half:** 57.6 (19-33), 1st half at Tennessee, 1/16/17  
**ND shot 60 percent/half:** 64.9 (24-37), 1st half vs. Wake Forest, 1/5/17  
**ND shot 65 percent/half:** 68.2 (15-22), 2nd half at Toledo, 12/18/16  
**ND shot 70 percent/half:** 71.4 (30-42), 1st half vs. Valparaiso, 12/4/16  
**ND shot 55 percent/both halves:** 59.4 (19-32) and 55.6 (20-36), vs. UL-Lafayette, 11/22/16  
**ND shot below 25 percent/half:** 24.0 (6-25), 1st half at Miami, 1/8/15  
**ND shot below 30 percent/half:** 29.1 (7-24), 2nd half at Georgia Tech, 1/2/17

## THREE-POINT SHOOTING

**Player made 4 three-pointers/half:** Madison Cable (1st half) vs. Syracuse, 3/6/16 (@ Greensboro, N.C.)  
**Player made 5 three-pointers/half:** Michaela Mabrey (1st half) at Boston College, 2/8/15  
**Player made 5 three-pointers:** Arike Ogunbowale vs. Pittsburgh, 1/12/17  
**Player made 6 three-pointers:** Michaela Mabrey vs. Syracuse, 1/21/16  
**Player made 7 three-pointers:** Alicia Ratay at Providence, 2/16/03  
**Player made 8 three-pointers:** Sheila McMillen vs. St. John's, 2/28/98 (@ Piscataway, N.J.)  
**Player attempted 10 three-pointers:** Michaela Mabrey (10) vs. Syracuse, 1/21/16  
**ND made 10 three-pointers:** 10 vs. Wake Forest, 1/5/17  
**ND did not make a three-pointer:** vs. Saint Joseph's (Pa.), 12/21/14  
**ND attempted 20 three-pointers:** 22 vs. Valparaiso, 12/4/16  
**ND shot 60 percent 3FG (min. 5 att.):** 62.5 (5-8) at Tennessee, 1/16/17

## FREE-THROW SHOOTING

**Player made 10 free-throws:** Jewell Loyd (10) at Georgia Tech, 2/19/15  
**Player made 15 free-throws:** Jewell Loyd (15) at DePaul, 12/10/14  
**Player attempted 15 free-throws:** Brianna Turner (16) at North Carolina, 1/15/15  
**Player made 10 for 10 or better:** 12-12 by Natalie Novosel vs. South Florida, 2/25/12  
**ND shot 90 percent (min. 10 att.):** 90.0 (27-30) vs. Pittsburgh, 11/2/17  
**ND shot below 50 percent (min. 10 att.):** 36.4 (4-11) at NC State, 12/29/16  
**ND made 30 free-throws:** 31 (attempted 46) vs. UCLA, 11/28/15 (@ Freeport, Bahamas)  
**ND made fewer than five FTs:** 4 (attempted 7) vs. Wake Forest, 1/5/17  
**ND attempted 40 free-throws:** 46 (made 31) vs. UCLA, 11/28/15 (@ Freeport, Bahamas)  
**ND attempted fewer than five FTs:** 2 (made 2) at Connecticut, 3/8/10

## REBOUNDS

**Player had 15 rebounds:** Brianna Turner (18) at North Carolina, 1/15/15  
**Player had 20 rebounds:** Natalie Achonwa (20) vs. South Florida, 3/10/13 (@ Hartford, Conn.)  
**Two players had double-figure rebounds:** Taya Reimer (11) and Brianna Turner (10) vs. Connecticut, 4/7/15 (@ Tampa, Fla.)  
**Three players had double-figure rebounds:** Jewell Loyd (12), Madison Cable (11) and Taya Reimer (11) at DePaul, 12/10/14  
**ND had 50 rebounds:** 60 vs. UL-Lafayette, 11/22/16  
**ND had 20 offensive rebounds:** 20 vs. TCU 11/26/16  
**ND had 25 offensive rebounds:** 28 vs. Connecticut, 4/7/13 (@ New Orleans, La.)  
**ND had 30 offensive rebounds:** 30 vs. Longwood, 12/28/11

## DOUBLE-DOUBLES

**Points & rebounds:** Kathryn Westbeld (12/11) at Michigan State, 12/20/16  
**Points & rebounds/consecutive games:** Brianna Turner (16/12) vs. UConn, 12/7/16; (14/11) at DePaul, 12/10/16  
**Points & rebounds/3 consecutive games:** Natalie Achonwa (11/14) at Iowa, 3/26/13; (17/10) vs. Kansas, 3/31/13 (@ Norfolk, Va.); vs. Duke (17/13), 4/2/13 (@ Norfolk, Va.)  
**Points & rebounds/4 consecutive games:** Jacqueline Batteast (14/11) vs. Virginia Tech, 1/10/04; (23/11) vs. Connecticut, 1/13/04; (22/10) at West Virginia, 1/17/04; (12/10) at Syracuse, 1/21/04  
**Points & rebounds/5 consecutive games:** Jacqueline Batteast (20/10) vs. Western Michigan, 12/12/01; (11/12) vs. Marquette, 12/22/01; (23/10) at Rice, 12/28/01; (25/14) vs. DePaul, 12/31/01; (12/13) at Miami (Fla.), 1/2/02  
**Points & assists:** Marina Mabrey (18/10) at Valparaiso, 11/23/15  
**Points & assists/consecutive games:** Niele Ivey (12/10) at Valparaiso, 11/17/00; (14/11) vs. Arizona, 11/20/00  
**Two players had double-doubles:** Brianna Turner (14p/11r) and Taya Reimer (14p/10r) vs. DePaul, 3/22/15  
**Three players had double-doubles:** Jewell Loyd (41p/12r), Madison Cable (20p/11r) and Taya Reimer (15p/11r) at DePaul, 12/10/14  
**15 points and 15 rebounds:** Brianna Turner (29/18) at North Carolina, 1/15/15  
**20 points and 10 rebounds:** Madison Cable (21/10) vs. DePaul, 12/9/15  
**20 points and 20 rebounds:** Natalie Achonwa (20/20) vs. South Florida, 3/10/13 (@ Hartford, Conn.)

## TRIPLE-DOUBLES (only six in school history)

Lindsay Allen (11p/11r/12a) at Chattanooga, 12/27/16  
 Marina Mabrey (18p/10a/12s) at Valparaiso, 11/23/15  
 Skylar Diggins (17p/10r/10a) at DePaul, 2/24/13  
 Skylar Diggins (22p/10r/11a) vs. Maryland, 3/27/12 (@ Raleigh, N.C.)  
 Sara Liebscher (17p/12r/10a) vs. Detroit, 2/15/90  
 Mary Gavin (11p/14a/10s) vs. Marquette, 1/31/87

## ASSISTS

**Player had 10 assists:** Lindsay Allen (10) at Tennessee, 1/16/17  
**Player had 10 assists/consecutive games:** Megan Duffy (11 vs. Rutgers, 1/23/05; 10 vs. St. John's, 1/26/05)  
**Player had 15 assists:** Mary Gavin (17) at Marquette, 2/28/87  
**ND had 30 assists:** 30 vs. Central Michigan, 12/22/13  
**ND had fewer than 10 assists:** 9 vs. Florida State, 1/2/15  
**ND had fewer than 5 assists:** 3 vs. Villanova, 3/8/09 (@ Hartford, Conn.)

## BLOCKED SHOTS

**Player blocked 5 shots:** see 6 blocks  
**Player blocked 6 shots:** Brianna Turner (6) at Georgia Tech, 1/2/17  
**Player blocked 10 shots:** Amanda Barksdale (11) vs. Boston College, 2/10/02  
**ND blocked 10 shots:** 10 vs. Syracuse, 1/21/16  
**ND blocked 15 shots:** 16 vs. Boston College, 2/10/02  
**ND blocked 0 shots:** vs. Duke, 2/23/14

## STEALS

**Player had 5 steals:** Jackie Young (6) vs. Valparaiso, 12/4/16  
**Player had 10 steals:** Marina Mabrey (12) at Valparaiso, 11/23/15  
**ND had 20 steals:** 21 vs. Saint Francis (Pa.), 12/31/12

## TURNOVERS

**ND committed 25 or more:** 28 vs. Georgetown, 1/15/13  
**ND committed 25 or more and won:** see 25 or more  
**ND committed 30 or more:** 30 at West Virginia, 2/22/11  
**ND committed 10 or fewer:** 10 at Michigan State, 12/20/16  
**ND committed 10 or fewer/consecutive games:** 7 at Saint Joseph's (Pa.), 12/21/14; 7 vs. Oregon State, 12/28/15  
**ND committed 5 or fewer:** 5 at Duke, 2/1/16

## MISCELLANEOUS

**Led ND in points/rebounds/assists:** Jewell Loyd (27p/8r/6a) vs. Maryland, 12/3/14 (@ Fort Wayne, Ind.)  
**Hit "final minute" game-winning shot:** Kathryn Westbeld (FT/0:26.2, 2nd) vs. Ohio State, 12/2/15  
**Four-point play:** Madison Cable (9:52, 2nd half) vs. Wake Forest, 2/1/15  
**Made shot from midcourt or beyond:** Lindsay Allen (50 feet at 0:00, 1st half) vs. Florida State, 1/2/15  
**Played every minute:** Lindsay Allen (40) at Tennessee, 1/16/17  
**Played more than 40 minutes:** Jewell Loyd (42) and Michaela Mabrey (41) at DePaul, 12/10/14  
**ND rallied from 10-point deficit to win:** trailed at North Carolina, 23-34 (5:28 - 1st); won 89-79, 1/15/15  
**ND rallied from 15-point deficit to win:** trailed vs. Syracuse, 7-22 (12:45 - 1st); won 79-68, 2/26/13  
**ND scored 20 straight points:** see 25 straight points  
**ND scored 25 straight points:** 26-0 run vs. Valparaiso, 12/4/16  
**ND scored 30 straight points:** 36-0 run vs. Southeast Missouri State, 1/2/11

## OVERTIME

**ND played an OT game:** vs. UCLA (W, 92-84, ot), 11/28/15 (@ Freeport, Bahamas)  
**ND played multiple overtimes:** vs. Connecticut (W, 96-87, 3ot), 3/4/13  
**ND won an OT game:** see played an OT game  
**ND won an OT game at home:** vs. Connecticut (W, 96-87, 3ot), 3/4/13  
**ND won an OT game on the road:** at DePaul (W, 94-93, ot), 12/10/14  
**ND lost an OT game:** vs. UCLA (L, 86-83, 2ot), 11/18/10

## RANKINGS

**Played the No. 1 team in the AP poll:** lost vs. Connecticut (72-61), 12/7/16  
**Played the No. 1 team in the WBCA/USA Today poll:** lost at Connecticut (91-81), 12/5/15  
**Defeated top-10 opponent:** at #12/9 Florida State (73-66), 2/22/16  
**Defeated top-10 opponent at home:** vs. #10/9 Oregon State (62-61), 12/28/15  
**Defeated top-10 opponent on the road:** see defeated top-10 opponent  
**Defeated top-10 opponent by double digits:** vs. #7/6 Florida State (71-58), 3/8/15 (@ Greensboro, N.C.)

## The Last Time An Opponent...

### SCORING

**Player scored 25 points:** Erica McCall (27) vs. Stanford, 3/25/16 (@ Lexington, Ky.)  
**Player scored 30 points:** Adrienne Motley (32) at Miami, 1/8/15  
**Player scored 35 points:** Heather Butler (37), UT Martin, 3/24/13 (@ Iowa City, Iowa)  
**Two players scored 20 points:** Erica McCall (27) and Karlie Samuelson (20) vs. Stanford, 3/25/16 (@ Lexington, Ky.)  
**Three players scored 20 points:** Angela Simpson (37), Bridgette Williams (24) and Stephanie Shaw (22), Northwestern State, 3/24/95 (@ Amarillo, Texas)  
**Two players scored 25 points:** Brittney Griner (32) and Odyssey Sims (25) at Baylor, 11/20/11  
**None in double figures:** at Georgia Tech, 1/2/17 (Zaire O'Neil had nine points)  
**One in double figures:** AJ Alix (16), vs. TCU, 11/26/16  
**Five in double figures:** Erica McCall (27), Karlie Samuelson (20), Kaylee Johnson (17), Lili Thompson (11) and Marta Sniezek (11) vs. Stanford, 3/25/16 (@ Lexington, Ky.)  
**Six in double figures:** Jannon Roland (21), Danielle McCulley (14), Jennifer Jacoby (12), Stacey Lovelace (12), Nicole Erickson (11) and Shannon Lindsey (11), Purdue, 11/30/94  
**Scored 50 points/half:** 50 (1st half), vs. Stanford, 3/25/16 (@ Lexington, Ky.)  
**Scored 55 points/half:** see 60 points/half  
**Scored 60 points/half:** 63 (2nd half), Northwestern State, 3/24/95 (@ Amarillo, Texas)  
**Scored 100 points/game:** 106, Connecticut, 12/8/98  
**Scored 100 points/non-conference game:** 103, Northwestern State, 3/24/95 (@ Amarillo, Texas)  
**Scored fewer than 15 points/half:** 11 (1st half), Virginia Tech, 1/24/16  
**Scored fewer than 20 points/half:** 17 (1st half), at Georgia Tech, 1/2/17  
**Scored fewer than 40 points/game:** 38, at Georgia Tech, 1/2/17

### FIELD-GOAL SHOOTING

**Shot 50 percent/game:** see 55 percent/game  
**Shot 55 percent/game:** 55.9 (33-59), vs. Stanford, 3/25/16 (@ Lexington, Ky.)  
**Shot 60 percent/game:** 60.0 (30-50), DePaul, 1/22/08  
**Shot below 20 percent/game:** 18.6 (11-59), Holy Cross, 11/23/14  
**Shot below 25 percent/game:** 24.1 (14-58), at Georgia Tech, 1/2/17  
**Shot below 30 percent/game:** See 30 percent/game  
**Shot 50 percent/half:** 52.0 (13-25), 2nd half vs. Wake Forest, 1/5/17  
**Shot 55 percent/half:** 55.2 (12-23), 2nd half vs. UConn, 12/7/16  
**Shot 60 percent/half:** 64.5 (20-31), 1st half vs. Stanford, 3/25/16 (@ Lexington, Ky.)  
**Shot 65 percent/half:** 68.2 (15-22), 2nd half by Texas A&M, 4/5/11 (@ Indianapolis, Ind.)  
**Shot 70 percent/half:** 70.0 (14-20), 2nd half by New Hampshire, 11/12/10  
**Shot 50 percent/both halves:** 51.4 (19-37) and 53.8 (14-26) at Connecticut, 12/5/15  
**Shot below 20 percent/half:** 16.0 (4-25), 1st half by Virginia Tech, 1/24/16  
**Shot below 25 percent/half:** 21.9 (7-32) 1st half at Georgia Tech, 1/2/17  
**Shot below 30 percent/half:** 27.3 (6-22) 1st half vs. Pittsburgh, 1/12/17  
**Shot below 30 percent/both halves:** 21.9 (7-32) and 26.9 (7-26) at Georgia Tech, 1/2/17

### THREE-POINT SHOOTING

**Player made 5 three-pointers:** Alayna Gribble, Pittsburgh, 1/12/17  
**Player made 6 three-pointers:** Heather Butler, UT Martin, 3/24/13 (@ Iowa City, Iowa)  
**Player made 7 three-pointers:** Angie Bjorklund, Tennessee, 1/5/08  
**Player attempted 10 three-pointers:** Alayna Gribble (12), Pittsburgh, 1/12/17  
**Made 10 three-pointers:** 12, vs. Wake Forest, 1/5/17  
**Did not make a three-pointer:** Duke, 2/16/15  
**Shot 50 percent 3FG (min. 5 att.):** 55.6 (10-18), Wake Forest, 1/5/17  
**Shot 60 percent 3FG (min. 5 att.):** 60.0 (6-10), Tennessee, 1/19/15

### FREE-THROW SHOOTING

**Player made 10 free-throws:** Brianna Kiesel (10), Pittsburgh, 2/26/15  
**Player made 15 free-throws:** Nok Duany (15) at Georgetown, 2/23/02  
**Player attempted 15 free-throws:** Brittany Hrynko (16) at DePaul, 12/10/14  
**Player made 10 for 10 or better:** Allisha Gray (10-10) at North Carolina, 1/15/15  
**Shot 90 percent (min. 10 att.):** 93.3 (14-15), at NC State, 12/29/16  
**Shot below 50 percent (min. 10 att.):** 45.0 (9-12) at Georgia Tech, 1/2/17  
**Made 30 free-throws:** 32 (attempted 37), Illinois, 11/24/98  
**Made fewer than five FTs:** 3 (attempted 10) at Chattanooga, 12/27/16  
**Attempted 40 free-throws:** 45 (made 28), at South Florida, 1/13/07  
**Attempted fewer than five FTs:** 1 (made 1) vs. Valparaiso, 12/4/16

### REBOUNDS

**Player had 15 rebounds:** Jessica Lindstrom (16), vs. Green Bay, 11/17/16  
**Player had 20 rebounds:** Wendy Scholtens (20) at Vanderbilt, 1/8/89  
**Two players had double-figure rebounds:** Oderah Chidom (11) and Azurá Stevens (10) vs. Duke, 3/4/16 (@ Greensboro, N.C.)  
**Three players had double-figure rebounds:** Aurora Adams (16), Brenda McCunn (11) and Paula Langseth (10), Hawaii, 3/22/81 (@ Anchorage, Alaska)  
**Had 50 rebounds:** 55, Syracuse, 1/21/16  
**Out-rebounded ND by 10 or more:** 13, at Toledo, 12/18/16 (UT 40, ND 27)

### DOUBLE-DOUBLES

**Points & rebounds:** Jennifer Mathurin (11/10) at NC State, 12/29/16  
**Points & assists:** Chanise Jenkins (12/10) at DePaul, 12/10/14  
**Points & steals:** Alexis Jones (16/10) at Duke, 2/2/14  
**Two players had double-doubles:** Nina Davis (26/13) and Sune Agbuke (12/10), Baylor, 3/29/15 (@ Oklahoma City, Okla.)  
**Three players had double-doubles:** Mary Raese (24p/10r), Mary Westerwelle (11p/10r) and Ne-tra McGrew (10p/10a), Idaho, 3/21/86 (@ Amarillo, Texas)  
**15 points and 15 rebounds:** See 15/15  
**20 points and 10 rebounds:** Jessica Lindstrom (20/16) vs. Green Bay, 11/17/16  
**20 points and 20 rebounds:** Wendy Scholtens (29/20) at Vanderbilt, 1/8/89

### TRIPLE-DOUBLES

**Points, rebounds, assists:** Liad Suez-Karni (14p/10r/10a), Villanova, 2/7/06  
**Points, rebounds, steals:** Diana Vines (23p/11r/12s) at DePaul, 1/24/89

### ASSISTS

**Player had 10 assists:** Aysia Bugg (10) at Pittsburgh, 1/3/16  
**Player had 15 assists:** Veronica Pettry (16) at Loyola-Chicago, 2/18/89  
**Had 25 assists:** 25, Connecticut, 4/8/14 (@ Nashville, Tenn.)  
**Had 30 assists:** 30 at Loyola-Chicago, 2/18/89  
**Had fewer than 10 assists:** see 5 or fewer  
**Had 5 or fewer assists:** 5, at Georgia Tech, 1/2/17

### BLOCKED SHOTS

**Player blocked 5 shots:** Jassany Williams (9) at Miami, 1/8/15  
**Blocked 10 shots:** 10 at Miami, 1/8/15  
**Blocked 15 shots:** 16 at Connecticut, 1/27/07  
**Blocked 0 shots:** vs. Valparaiso, 12/4/16

### STEALS

**Player had 5 steals:** Gabby Williams, vs. UConn, 12/7/16  
**Player had 6 steals:** see player had seven steals  
**Player had 7 steals:** Kala Green, North Carolina A&T, 3/19/16  
**Player had 10 steals:** Alexis Jones at Duke, 2/2/14  
**Had 15 steals:** 16 at Duke, 2/2/14  
**Had 20 steals:** 24, Georgetown, 1/29/00

### TURNOVERS

**Player committed 10 turnovers:** Samantha Logic (11) at Iowa, 3/26/13  
**Committed 20 turnovers or more and won:** 24, Connecticut, 12/6/14  
**Committed 25 turnovers or more:** see 30 turnovers  
**Committed 30 turnovers or more:** 31 vs. Valparaiso, 12/4/16  
**Committed 35 turnovers or more:** 35, Connecticut, 3/4/13  
**Committed 40 turnovers or more:** 46, Akron, 11/11/11  
**Committed 5 turnovers or fewer:** 5 at Villanova, 1/25/03  
**Committed 10 turnovers or fewer:** 9, at Tennessee, 1/16/17

### MISCELLANEOUS

**Led team in points/rebounds/assists:** G'mrice Davis (9p/15r/3a), vs. Fordham, 11/14/16  
**Four-point play:** Tori Jankoska (2:44, 1st quarter) at Michigan State, 12/20/16  
**Hit "final minute" game-winning shot:** Brooke Hampton (2 FT/0:04.6), West Virginia, 2/12/12  
**Played every minute:** Jordan Reynolds (40) at Tennessee, 1/16/17  
**Played more than 40 minutes:** Monique Billings (42) and Nirra Fields (41), UCLA, 11/28/15 (@ Freeport, Bahamas)  
**Rallied from 10-point deficit to win:** Tennessee, 1/16/17 (ND led by 15 in the second quarter and 62-52 in the fourth quarter, Tennessee won, 71-69)  
**Led ND by 10 or more at halftime:** 11, vs. Stanford, 3/25/16 (@ Lexington, Ky.)  
**Led ND by 15 or more at halftime:** 20 at Miami (40-20), 1/8/15  
**Led ND by 25 or more points:** 25 by Baylor (75-50 at 4:56 of 2nd half), 4/3/12 (@ Denver, Colo.)

## Scoring Margins - The Last Time...

**ND won by 30-plus points:** 32 — at ND 86, Pittsburgh 54, 1/12/17  
**ND won by 30-plus points at home:** 32 — at ND 86, Pittsburgh 54, 1/12/17  
**ND won by 30-plus points on the road:** 34 — ND 86, at Wake Forest 52, 2/18/15  
**ND won by 30-plus points at a neutral site:** 40 — ND 91, UL-Lafayette 51, 11/22/16 (@ Houston, Texas)  
**ND won by 40-plus points:** see 60 points  
**ND won by 50-plus points:** see 60 points  
**ND won by 60-plus points:** 60 — at ND 114, Valparaiso 54, 12/4/16  
**ND won by 70-plus points:** 75 — at ND 104, Holy Cross 29, 11/23/14  
  
**ND lost by 10-19 points:** 11 — Connecticut 72, at ND 61, 12/7/16  
**ND lost by 10-19 at home:** 11 — Connecticut 72, at ND 61, 12/7/16  
**ND lost by 10-19 points on the road:** 10 — at Connecticut 91, ND 81, 12/5/15  
**ND lost by 10-19 points at a neutral site:** 10 — Connecticut 63, ND 53, 4/7/15 (@ Tampa, Fla.)  
**ND lost by 20-29 points:** 21 — Connecticut 79, ND 58, 4/8/14 (@ Nashville, Tenn.)  
**ND lost by 20-29 points at home:** 25 — Connecticut 76, at ND 51, 3/1/10  
**ND lost by 20-29 points on the road:** 21 — at Connecticut 78, ND 57, 2/19/11  
**ND lost by 30-plus points:** 39 — at Tennessee 89, ND 50, 3/17/02













## Notre Dame Team Superlatives

Category	High	Opponent	Date	Low	Opponent	Date
Points:	114	Valparaiso	Dec. 4, 2016	55	at Georgia Tech	Jan. 2, 2017
Field Goals Made:	48	Valparaiso	Dec. 4, 2016	23	Green Bay	Nov. 17, 2016
				23	at Georgia Tech	Jan. 2, 2017
Field Goal Attempts:	75	Valparaiso	Dec. 4, 2016	52	Pittsburgh	Jan. 12, 2017
Field Goal Percentage:	.640 (48-75)	Valparaiso	Dec. 4, 2016	.359 (23-64)	Green Bay	Nov. 17, 2016
3-Point FG Made:	12	Central Michigan	Nov. 11, 2016	1	Fordham	Nov. 14, 2016
				1	at Chattanooga	Dec. 27, 2016
3-Point FG Attempts:	22	Central Michigan	Nov. 11, 2016	4	at Chattanooga	Dec. 27, 2016
		Valparaiso	Dec. 4, 2016			
3-Pt FG Percentage::	.625 (10-16)	Wake Forest	Jan. 5, 2017	.125 (1-8)	Fordham	Nov. 14, 2016
Free Throws Made:	27	Pittsburgh	Jan. 12, 2017	4	UConn	Dec. 7, 2016
				4	at NC State	Dec. 29, 2016
				4	Wake Forest	Jan. 5, 2017
Free Throws Attempts:	30	Pittsburgh	Jan. 12, 2017	7	Wake Forest	Jan. 5, 2017
Free Throw Percentage:	.900 (27-30)	Pittsburgh	Jan. 12, 2017	.364 (4-11)	at NC State	Dec. 29, 2016
Rebounds:	60	vs. UL-Lafayette	Nov. 22, 2016	27	at Toledo	Dec. 18, 2016
Assists:	29	Central Michigan	Nov. 11, 2016	11	Fordham	Nov. 14, 2016
	29	Valparaiso	Dec. 4, 2016			
Steals:	19	Valparaiso	Dec. 4, 2016	2	at Michigan State	Dec. 20, 2016
Blocked Shots:	9	at Chattanooga	Dec. 27, 2016	2	Washington	Nov. 20, 2016
				2	at Iowa	Nov. 30, 2016
				2	at NC State	Dec. 29, 2016
Turnovers:	21	vs. UL-Lafayette	Nov. 22, 2016	10	Washington	Nov. 20, 2016
	21	at Miami	Jan. 8, 2017	10	at Michigan State	Dec. 20, 2016
Fouls:	22	at Iowa	Nov. 30, 2016	12	Green Bay	Nov. 17, 2016

## Opponent Team Superlatives

Category	High	Opponent	Date	Low	Opponent	Date
Points:	72	UConn	Dec. 7, 2016	36	Fordham	Nov. 14, 2016
	72	Wake Forest	Jan. 5, 2017			
Field Goals Made:	27	Tennessee	Jan. 16, 2017	12	Fordham	Nov. 14, 2016
Field Goal Attempts:	66	at DePaul	Dec. 10, 2016	48	TCU	Nov. 26, 2016
Field Goal Percentage:	.481 (25-52)	Wake Forest	Jan. 5, 2017	.231 (12-52)	Fordham	Nov. 14, 2016
3-Point FG Made:	12	Green Bay	Nov. 17, 2016	1	UConn	Dec. 7, 2016
				1	at Georgia Tech	Jan. 2, 2017
3-Point FG Attempts:	33	Central Michigan	Nov. 11, 2016	8	at Georgia Tech	Jan. 2, 2017
3-Pt FG Percentage::	.556 (10-18)	Wake Forest	Jan. 5, 2017	.105 (2-19)	Fordham	Nov. 14, 2016
Free Throws Made:	19	UConn	Dec. 7, 2016	1	Valparaiso	Dec. 4, 2016
Free Throws Attempts:	22	Tennessee	Jan. 16, 2017	1	Valparaiso	Dec. 4, 2016
Free Throw Percentage (Min 2):	.950 (19-20)	UConn	Dec. 7, 2016	.300 (3-10)	at Chattanooga	Dec. 27, 2016
Rebounds:	40	at Iowa	Nov. 30, 2016	19	Pittsburgh	Jan. 12, 2017
	40	at Toledo	Dec. 18, 2016			
	40	at Georgia Tech	Jan. 2, 2017			
Assists:	21	at Toledo	Dec. 18, 2016	5	at Georgia Tech	Jan. 2, 2017
Steals:	12	at Miami	Jan. 8, 2017	2	at Michigan State	Dec. 20, 2016
Blocked Shots:	6	Green Bay	Nov. 17, 2016	0	Valparaiso	Dec. 4, 2016
	6	Pittsburgh	Jan. 12, 2017			
Turnovers:	31	Valparaiso	Dec. 4, 2016	9	Tennessee	Jan. 16, 2017
Fouls:	25	Fordham	Nov. 14, 2016	12	Valparaiso	Dec. 4, 2016
	25	at DePaul	Dec. 10, 2016			

## Notre Dame Individual Superlatives

Category	Stat	Player	Opponent	Date
Points:	30	Arike Ogunbowale	Central Michigan	Nov. 11, 2016
Field Goals Made:	12	Arike Ogunbowale	Central Michigan	Nov. 11, 2016
Field Goal Attempts:	18	Arike Ogunbowale	at Georgia Tech	Jan. 2, 2017
FG Pct. (Min. 5 made):	1.000 (5-5)	Lindsay Allen	Fordham	Nov. 14, 2016
FG Pct. (Min. 10 made):	.923 (12-13)	Arike Ogunbowale	Central Michigan	Nov. 11, 2016
3-Point FG Made:	5	Arike Ogunbowale	Central Michigan	Nov. 11, 2016
	5	Arike Ogunbowale	TCU	Nov. 26, 2016
	5	Arike Ogunbowale	Pittsburgh	Jan. 12, 2017
3-Point FG Attempts:	8	Marina Mabrey	at NC State	Dec. 29, 2016
	8	Arike Ogunbowale	Pittsburgh	Jan. 12, 2017
3-Pt FG Pct. (Min. 3 made):	1.000 (5-5)	Arike Ogunbowale	Central Michigan	Nov. 11, 2016
Free Throws Made:	7	Kristina Nelson	Pittsburgh	Jan. 12, 2017
	7	Jackie Young	Pittsburgh	Jan. 12, 2017
Free Throws Attempts:	10	Kristina Nelson	Pittsburgh	Jan. 12, 2017
FT Pct.:	1.000 (7-7)	Jackie Young	Pittsburgh	Jan. 12, 2017
Rebounds:	12	Brianna Turner	Washington	Nov. 20, 2016
	12	Brianna Turner	vs. UL-Lafayette	Nov. 22, 2016
	12	Brianna Turner	UConn	Dec. 7, 2016
Assists:	12	Lindsay Allen	TCU	Nov. 26, 2016
	12	Lindsay Allen	at Chattanooga	Dec. 27, 2016
Steals:	6	Jackie Young	Valparaiso	Dec. 4, 2016
Blocked Shots:	6	Brianna Turner	at Chattanooga	Dec. 27, 2016
	6	Brianna Turner	at Georgia Tech	Jan. 2, 2017
Turnovers:	7	Kathryn Westbeld	UConn	Dec. 7, 2016
Minutes:	40	Lindsay Allen	6x, last at Tennessee	Jan. 16, 2017

## Opponent Individual Superlatives

Category	Stat	Player	Opponent	Date
Points:	24	Queen Alford	Chattanooga	Dec. 27, 2016
Field Goals Made:	9	Queen Alford	Chattanooga	Dec. 27, 2016
Field Goal Attempts:	23	Jaylyn Gordon	UL-Lafayette	Nov. 22, 2016
	23	Jessica January	DePaul	Dec. 10, 2016
FG Pct. (Min. 5 made):	.778 (7-9)	Megan Gustafson	Iowa	Nov. 30, 2016
	.778 (7-9)	Napheesa Collier	UConn	Dec. 7, 2016
3-Point FG Made:	5	Aleah Swary	Central Michigan	Nov. 11, 2016
	5	Jay-Ann Bravo-Harriott	Toledo	Dec. 18, 2016
	5	Alayna Gribble	Pittsburgh	Jan. 12, 2017
3-Point FG Attempts:	12	Alayna Gribble	Pittsburgh	Jan. 12, 2017
3-Pt FG Pct.:	1.000 (2-2)	Jada Woody	Toledo	Dec. 18, 2016
	1.000 (2-2)	Victoria Gaines	at Michigan State	Dec. 20, 2016
	1.000 (2-2)	Miah Spencer	at NC State	Dec. 29, 2016
Free Throws Made:	6	Kelsey Plum	Washington	Nov. 20, 2016
	6	Jada Butts	TCU	Nov. 26, 2016
	6	Napheesa Collier	UConn	Dec. 7, 2016
Free Throws Attempts:	8	Jessica January	DePaul	Dec. 10, 2016
	8	Queen Alford	Chattanooga	Dec. 27, 2016
FT Pct. (Min 6 made):	1.000 (6-6)	Jada Butts	TCU	Nov. 26, 2016
	1.000 (6-6)	Napheesa Collier	UConn	Dec. 7, 2016
Rebounds:	16	Jessica Lindstrom	Green Bay	Nov. 17, 2016
Assists:	6	8x, last Laura Cornelius	Miami	Jan. 8, 2017
Steals:	5	Gabby Williams	UConn	Dec. 7, 2016
Blocked Shots:	3	Jenna Allen	Michigan State	Dec. 20, 2016
	3	Diamond DeShields	Tennessee	Jan. 16, 2017
Turnovers:	9	Mikaela Boyd	Toledo	Dec. 18, 2016
Minutes:	40	Natalie Romeo	Washington	Nov. 20, 2016
	40	Gabby Williams	UConn	Dec. 7, 2016
	40	Kia Nurse	UConn	Dec. 7, 2016
	40	Katie Lou Samuelson	UConn	Dec. 7, 2016
	40	Jordan Reynolds	Tennessee	Jan. 16, 2017

## Irish Starting Lineups

Date	Opp.	G	G	G/F	F	F
11/11	CMU	Allen	Ogunbowale	Johnson	Westbeld	Turner
11/14	Fordham	Allen	Ogunbowale	Mabrey	Westbeld	Turner
11/17	Green Bay	Allen	Ogunbowale	Mabrey	Westbeld	Turner
11/20	Wash.	Allen	Ogunbowale	Mabrey	Westbeld	Turner
11/22	v. ULL	Allen	Ogunbowale	Mabrey	Westbeld	Turner
11/26	TCU	Allen	Ogunbowale	Mabrey	Westbeld	Turner
11/30	@Iowa	Allen	Ogunbowale	Mabrey	Westbeld	Turner
12/4	Valpo	Allen	Ogunbowale	Mabrey	Westbeld	Turner
12/7	UConn	Allen	Ogunbowale	Mabrey	Westbeld	Turner
12/10	@DePaul	Allen	Ogunbowale	Mabrey	Westbeld	Turner
12/18	@Toledo	Allen	Ogunbowale	Mabrey	Westbeld	Turner
12/20	@MSU	Allen	Johnson	Mabrey	Westbeld	Turner
12/27	@UTC	Allen	Ogunbowale	Mabrey	Westbeld	Turner
12/29	@NCSU	Allen	Ogunbowale	Mabrey	Westbeld	Turner
1/2	@GT	Allen	Ogunbowale	Mabrey	Westbeld	Turner
1/5	WF	Allen	Ogunbowale	Mabrey	Westbeld	Turner
1/8	@Miami	Allen	Ogunbowale	Mabrey	Westbeld	Turner
1/12	Pitt	Allen	Ogunbowale	Mabrey	Westbeld	Turner
1/16	@Tenn.	Allen	Ogunbowale	Mabrey	Westbeld	Turner

### Season/Career Start Totals

Player	2016-17	Career	Streak
Lindsay Allen	19	131	131
Brianna Turner	19	83	44
Kathryn Westbeld	19	52	25
Marina Mabrey	18	20	18
Arike Ogunbowale	18	18	7
Mychal Johnson	2	2	0

### Starting Lineup Combinations (3)

Players	Games
Allen, Ogunbowale, Mabrey, Westbeld, Turner	17
Allen, Ogunbowale, Johnson, Westbeld, Turner	1
Allen, Johnson, Mabrey, Westbeld, Turner	1



# MARINA MABREY

GUARD | 5-11 | SOPHOMORE | BELMAR, N.J. | MANASQUAN

# 3

## GAMES WITH ...

	Season	Career
Double Figure Points	10	31
20-Plus Points	2	3
30-Plus Points	0	0
10-Plus Rebounds	0	1
10-Plus Assists	0	1
Double-Double	0	1

## NOTABLES

### HONORS AND AWARDS:

- 2016 ACC All-Freshman Team
- 2016 ACC All-Academic Team
- 2015 Junkanoo Jam All-Tournament Team

### 2016-17 SEASON:

- Tied a career-high 33 minutes at North Carolina State on 12/29/16 (also at Michigan State on 12/20/16), when she gathered 22 points, and five rebounds.
- Recorded her 500th career point on 12/18/16 at Toledo, where she scored 19 points and collected six rebounds.
- Has made 18 starts and has averaged 12.7 points and 3.5 rebounds.
- Scored a season-high 27 points on 11/22/16 versus Louisiana-Lafayette.

### 2015-16 SEASON:

- Played in all 35 games, averaging 10.7 points and 1.5 steals per game.

## 2016-17 GAME-BY-GAME

	Opponent	Min	FG-A	3FG-A	FT-A	O-D-R	PF	A	TO	B	S	Pts
11/11	Central Mich.	26	4-8	3-7	6-7	1-2-3	2	5	2	1	1	17
11/14	·Fordham	18	2-9	0-3	3-3	1-1-2	2	0	2	0	0	7
11/17	·Green Bay	21	4-11	1-5	4-4	3-1-4	0	3	2	1	1	13
11/20	·Washington	14	2-6	0-1	0-0	2-0-2	2	2	1	0	4	4
11/22	·vs. UL-Lafayette	25	10-15	4-7	3-3	2-1-3	2	3	2	0	3	27
11/26	·TCU	28	6-13	3-7	2-2	3-2-5	2	2	1	0	0	17
11/30	·at Iowa	23	4-10	1-3	0-0	2-2-4	3	2	3	1	5	9
12/04	·Valparaiso	26	7-11	1-4	1-2	0-1-1	1	4	2	1	0	1
12/07	·Connecticut	18	1-8	0-4	0-0	1-1-2	3	1	1	0	0	2
12/10	·at DePaul	29	1-6	0-1	5-6	3-3-6	2	4	2	0	2	7
12/18	·at Toledo	30	8-12	2-3	1-1	1-5-6	4	3	5	2	1	19
12/20	·at Michigan St.	33	7-15	3-6	2-2	1-4-5	1	5	0	1	1	19
12/27	·at Chattanooga	13	1-2	0-1	0-0	1-0-1	0	2	1	0	1	2
12/29	·at NC State*	33	8-14	4-8	2-3	3-2-5	4	4	2	1	0	22
01/02	·at Ga. Tech*	21	3-9	1-4	0-0	0-1-1	1	4	1	0	0	7
01/05	·Wake Forest*	23	5-11	4-6	0-0	0-3-3	1	1	1	0	1	14
01/08	·at Miami*	33	5-11	2-7	3-4	1-4-5	1	4	4	0	4	15
01/12	·Pittsburgh*	18	2-4	1-2	2-2	0-5-5	3	2	2	1	1	7
01/16	·at Tennessee	30	7-13	3-5	0-0	0-4-4	1	1	0	1	0	17
01/19	at BC*											
01/22	at UNC*											
01/26	Duke*											
01/29	Virginia*											
02/02	at Va. Tech*											
02/06	Louisville*											
02/12	Georgia Tech*											
02/16	at Clemson*											
02/19	at Syracuse*											
02/23	BC*											
02/26	Florida State*											

## CAREER AND SEASON HIGHS

Points	
Season	27, vs. UL-Lafayette (11/22/16)
Career	27, vs. UL-Lafayette (11/22/16)
Rebounds	
Season	6, 2x, at Toledo (12/18/16)
Career	6, 5x, at Toledo (12/18/16)
Assists	
Season	5, 2x, at Michigan State (12/20/16)
Career	10, at Valparaiso (11/23/15)
Steals	
Season	5, at Iowa (11/30/16)
Career	12, at Valparaiso (11/23/15)
Blocks	
Season	2, at Toledo (12/18/16)
Career	2, 4x, at Toledo (12/18/16)
Field Goals Made	
Season	10, vs. UL-Lafayette (11/22/16)
Career	10, 2x, vs. UL-Lafayette (11/22/16)
3-Point FGs Made	
Season	4, 3x, vs. Wake Forest (01/05/17)
Career	4, 3x, vs. Wake Forest (01/05/17)
Free Throws Made	
Season	6, vs. Central Michigan (11/11/16)
Career	7, 2x, vs. NC A&T (03/19/16)
Minutes	
Season	33, 3x, at Miami (01/08/17)
Career	33, 3x, at Miami (01/08/17)

## CAREER STATISTICS

SEASON	GP-GS	MIN/AVG	FG-FGA	PCT	3FG-FGA	PCT	FT-FTA	PCT	ORB	DRB	REB	AVG	PF	DQ	AST	TO	BLK	STL	PTS	AVG
2015-16	35-2	662/18.9	127-247	.514	34-75	.453	85-104	.817	22	76	98	2.8	71	0	69	70	12	53	373	10.7
2016-17	19-18	462/24.3	87-188	.463	33-84	.393	34-39	.872	25	42	67	3.5	34	0	52	34	10	25	241	12.7
<b>TOTAL</b>	<b>54-20</b>	<b>1,124/20.8</b>	<b>214-435</b>	<b>.492</b>	<b>67-159</b>	<b>.421</b>	<b>119-143</b>	<b>.832</b>	<b>47</b>	<b>118</b>	<b>165</b>	<b>3.1</b>	<b>106</b>	<b>0</b>	<b>121</b>	<b>104</b>	<b>22</b>	<b>78</b>	<b>614</b>	<b>11.4</b>



# JACKIE YOUNG

GUARD | 6-0 | FRESHMAN | PRINCETON, IND. | PRINCETON COMMUNITY

# 5

## GAMES WITH ...

	Season	Career
Double Figure Points	5	5
20-Plus Points	1	1
30-Plus Points	0	0
5-Plus Rebounds	7	7
5-Plus Assists	0	0
Double-Double	0	0

## NOTABLES

### HONORS AND AWARDS:

- ACC Rookie of the Week (December 5, 2016)
- 2016 Naismith National Player of the Year
- 2016 McDonald's All-American
- 2016 Indiana Gatorade Player of the Year
- 2016 IBCA Senior Supreme All-State
- 2016 IndyStar Miss Basketball

### 2016-17 SEASON:

- Returned from an ankle injury with two minutes of action at Michigan State on 12/20/16.
- Was named Atlantic Coast Conference Rookie of the Week on 12/05/16, following her break-through game versus Valparaiso (20 points, six steals, five rebounds and three assists). She also tallied five points and three rebounds in the team's win at Iowa on 11/30/16.
- Scored a career-high 20 points with six steals and five rebounds vs. Valparaiso on 12/04/16. She became the first Irish player to score 20 points off the bench since Arike Ogunbowale had 21 at TCU on 12/12/15.
- Scored three points and recorded seven rebounds in her college debut against Green Bay on 11/17/16.

### HIGH SCHOOL:

- Averaged 34 points, nine rebounds and five assists as a senior at Princeton Community High School.

## 2016-17 GAME-BY-GAME

Opponent	Min	FG-A	3FG-A	FT-A	O-D-R	PF	A	TO	B	S	Pts
11/11 Central Mich.					DNP						
11/14 Fordham					DNP						
11/17 Green Bay	15	1-4	1-1	0-0	4-3-7	1	1	1	0	0	3
11/20 Washington	21	2-5	1-3	3-4	0-2-2	1	0	1	1	0	8
11/22 vs. UL-Lafayette	21	5-8	1-1	2-4	1-5-6	1	4	2	1	0	13
11/26 TCU	25	5-11	0-2	2-2	2-3-5	4	3	3	1	0	12
11/30 at Iowa	16	2-7	0-0	1-1	1-2-3	4	0	2	0	1	5
12/04 Valparaiso	26	8-9	3-4	1-1	1-4-5	1	3	1	0	6	20
12/07 Connecticut	30	3-4	1-1	0-0	1-3-4	4	0	2	1	4	7
12/10 at DePaul					DNP						
12/18 at Toledo					DNP						
12/20 at Michigan St.	2	0-0	0-0	0-0	0-0-0	0	0	0	0	0	0
12/27 at Chattanooga	16	1-4	0-0	1-2	1-2-3	1	1	1	0	0	3
12/29 at NC State*	10	0-1	0-1	0-0	0-1-1	3	0	1	0	0	0
01/02 at Ga. Tech*	23	0-2	0-0	0-0	0-1-1	3	0	0	0	1	0
01/05 Wake Forest*	18	1-4	0-0	0-0	1-0-1	1	3	1	0	0	2
01/08 at Miami*	20	4-7	1-1	0-0	5-1-6	2	1	2	0	0	9
01/12 Pittsburgh*	25	4-9	0-1	7-7	5-3-8	1	1	3	1	2	15
01/16 at Tennessee	23	4-4	0-0	2-4	3-2-5	2	0	2	0	0	10
01/19 at BC*											
01/22 at UNC*											
01/26 Duke*											
01/29 Virginia*											
02/02 at Va. Tech*											
02/06 Louisville*											
02/12 Georgia Tech*											
02/16 at Clemson*											
02/19 at Syracuse*											
02/23 BC*											
02/26 Florida State*											

## CAREER AND SEASON HIGHS

Points	Season 20, vs. Valparaiso (12/04/16)
Career 20, vs. Valparaiso (12/04/16)	
Rebounds	Season 8, vs. Pittsburgh (01/12/17)
Career 8, vs. Pittsburgh (01/12/17)	
Assists	Season 4, vs. UL-Lafayette (11/22/16)
Career 4, vs. UL-Lafayette (11/22/16)	
Steals	Season 6, vs. Valparaiso (12/04/16)
Career 6, vs. Valparaiso (12/04/16)	
Blocks	Season 1, 5x, vs. Pittsburgh (01/12/17)
Career 1, 5x, vs. Pittsburgh (01/12/17)	
Field Goals Made	Season 8, vs. Valparaiso (12/04/16)
Career 8, vs. Valparaiso (12/04/16)	
3-Point FGs Made	Season 3, vs. Valparaiso (12/04/16)
Career 3, vs. Valparaiso (12/04/16)	
Free Throws Made	Season 7, vs. Pittsburgh (01/12/17)
Career 7, vs. Pittsburgh (01/12/17)	
Minutes	Season 30, vs. Connecticut (12/07/16)
Career 30, vs. Connecticut (12/07/16)	

## CAREER STATISTICS

SEASON	GP-GS	MIN/AVG	FG-FGA	PCT	3FG-FGA	PCT	FT-FTA	PCT	ORB	DRB	REB	AVG	PF	DQ	AST	TO	BLK	STL	PTS	AVG
2016-17	15-0	291/19.4	40-79	.506	8-15	.533	19-25	.760	25	32	57	3.8	29	0	17	22	5	14	107	7.1
<b>TOTAL</b>	<b>15-0</b>	<b>291/19.4</b>	<b>40-79</b>	<b>.506</b>	<b>8-15</b>	<b>.533</b>	<b>19-25</b>	<b>.760</b>	<b>25</b>	<b>32</b>	<b>57</b>	<b>3.8</b>	<b>29</b>	<b>0</b>	<b>17</b>	<b>22</b>	<b>5</b>	<b>14</b>	<b>107</b>	<b>7.1</b>



# BRIANNA TURNER

FORWARD | 6-3 | JUNIOR | PEARLAND, TEXAS | MANVEL

# 11

## GAMES WITH ...

	Season	Career
Double Figure Points	16	68
20-Plus Points	2	12
30-Plus Points	0	0
10-Plus Rebounds	5	23
10-Plus Assists	0	0
Double-Double	4	18

## NOTABLES

### HONORS AND AWARDS:

- 2016 Wade Trophy Watch List
- 2016-17 AP Preseason All-American
- 2016 WBCA Coaches' All-America Team
- 2016 USBWA All-America Team
- 2016 Honda Sport Award Finalist
- 2016 Naismith Trophy Semifinalist
- Wooden Award's Midseason Top 25

### 2016-17 SEASON:

- Snapped a streak of 31 consecutive games with double-figure points, including 13 straight games this season, with seven points in the team's loss at North Carolina State on 12/29/16.
- Was named Atlantic Coast Conference Player of the Week the week of December 12, 2016. She scored 30 points and collected 23 rebounds during that period.
- Recorded her 1,000th career point on 11/30/16 at Iowa. She became the 36th Irish player to accomplish the feat and second Notre Dame player this season (also Lindsay Allen on 11/17/16 vs. Green Bay).
- Scored a season-high 26 points and gathered eight rebounds on 12/18/16 at Toledo.
- Played a season-high 37 minutes at Michigan State on 12/20/16, scoring 19 points with seven rebounds.
- Recorded back-to-back double-doubles against Washington and Louisiana-Lafayette, scoring a combined 26 points and collecting 24 rebounds.

## 2016-17 GAME-BY-GAME

Opponent	Min	FG-A	3FG-A	FT-A	O-D-R	PF	A	TO	B	S	Pts
11/11 ·Central Mich.	20	5-8	0-0	2-4	2-1-3	1	1	2	0	0	12
11/14 ·Fordham	28	5-10	0-0	0-2	2-6-8	1	0	3	1	1	10
11/17 ·Green Bay	30	5-10	0-0	4-6	3-1-4	2	3	1	2	1	14
11/20 ·Washington	27	3-6	0-0	4-6	4-8-12	3	0	1	1	0	10
11/22 ·vs. UL-Lafayette	30	8-13	0-0	0-2	3-9-12	1	1	2	1	0	16
11/26 ·TCU	15	7-10	0-0	4-5	2-1-3	2	1	1	1	1	18
11/30 ·at Iowa	31	6-11	0-0	3-5	1-3-4	3	1	3	0	1	15
12/04 ·Valparaiso	19	6-11	0-0	1-2	3-1-4	3	1	1	2	0	13
12/07 ·Connecticut	36	7-14	0-0	2-2	8-4-12	2	3	0	2	1	16
12/10 ·at DePaul	26	4-8	0-0	6-7	3-8-11	2	2	4	2	0	14
12/18 ·at Toledo	30	11-13	0-0	4-7	2-6-8	1	2	3	2	1	26
12/20 ·at Michigan St.	37	7-15	0-0	5-8	2-5-7	2	1	2	5	0	19
12/27 ·at Chattanooga	28	10-13	0-0	4-8	4-1-5	1	1	1	6	0	24
12/29 ·at NC State*	30	3-8	0-0	1-4	0-3-3	5	2	2	1	0	7
01/02 ·at Ga. Tech*	27	4-7	0-0	1-4	3-8-11	2	0	1	6	4	9
01/05 ·Wake Forest*	27	7-12	0-0	1-2	1-5-6	1	4	1	2	0	15
01/08 ·at Miami*	35	3-4	0-0	1-2	2-8-10	4	2	4	0	1	7
01/12 ·Pittsburgh*	23	4-7	0-0	3-3	1-5-6	2	0	0	2	3	11
01/16 ·at Tennessee	29	5-12	0-0	0-0	4-3-7	4	0	2	3	1	10
01/19 at BC*											
01/22 at UNC*											
01/26 Duke*											
01/29 Virginia*											
02/02 at Va. Tech*											
02/06 Louisville*											
02/12 Georgia Tech*											
02/16 at Clemson*											
02/19 at Syracuse*											
02/23 BC*											
02/26 Florida State*											

## CAREER AND SEASON HIGHS

Points	
Season	26, at Toledo (12/18/16)
Career	29, 2x, at UNC (01/15/15)
Rebounds	
Season	12, 3x, vs. Connecticut (12/07/16)
Career	18, at UNC (01/15/15)
Assists	
Season	4, vs. Wake Forest (01/05/17)
Career	4, vs. Wake Forest (01/05/17)
Steals	
Season	4, at Georgia Tech (01/02/17)
Career	4, at Georgia Tech (01/02/17)
Blocks	
Season	6, 2x, at Georgia Tech (01/02/17)
Career	7, 3x, vs. Louisville (02/23/15)
Field Goals Made	
Season	11, at Toledo (12/18/16)
Career	13, vs. UMass Lowell (11/14/14)
3-Point FGs Made	
Season	-
Career	-
Free Throws Made	
Season	6, at DePaul (12/10/16)
Career	9, at UNC (01/15/15)
Minutes	
Season	37, at Michigan State (12/20/16)
Career	38, at Duke (02/01/16)

## CAREER STATISTICS

SEASON	GP-GS	MIN/AVG	FG-FGA	PCT	3FG-FGA	PCT	FT-FTA	PCT	ORB	DRB	REB	AVG	PF	DQ	AST	TO	BLK	STL	PTS	AVG
2014-15	36-35	921/25.6	202-310	.652	0-0	.000	92-152	.605	103	180	283	7.9	86	1	25	75	89	39	496	13.8
2015-16	29-29	783/27.0	169-285	.593	0-0	.000	85-133	.639	66	146	212	7.3	63	1	27	41	88	24	423	14.6
2016-17	19-19	528/27.8	110-192	.573	0-0	.000	46-79	.582	50	86	136	7.2	42	1	25	34	39	15	266	14.0
<b>TOTAL</b>	<b>84-83</b>	<b>2,232/26.6</b>	<b>481-787</b>	<b>.611</b>	<b>0-0</b>	<b>.000</b>	<b>223-364</b>	<b>.613</b>	<b>219</b>	<b>412</b>	<b>631</b>	<b>7.5</b>	<b>191</b>	<b>3</b>	<b>77</b>	<b>150</b>	<b>216</b>	<b>79</b>	<b>1,185</b>	<b>14.1</b>



# MYCHAL JOHNSON

GUARD | 5-7 | JUNIOR | HUNTINGTON, W.VA. | HUNTINGTON ST. JOSEPH

# 14

### GAMES WITH ...

	Season	Career
5-Point Games	4	16
Double Figure Points	1	5
20-Plus Points	0	0
5-Plus Rebounds	1	3
10-Plus Rebounds	0	0
5-Plus Assists	1	2

### NOTABLES

#### 2016-17 SEASON:

- Made her second start of the season in Notre Dame's game at Michigan State, her first start since the season opener on 11/11/16 versus Central Michigan.
- Played a career-high 31 minutes at DePaul on 12/10/16, scoring a season-high 10 points.

#### 2015-16 SEASON:

- Appeared in 31 games as a sophomore, averaging 2.3 points and 1.2 rebounds per game.

### 2016-17 GAME-BY-GAME

Opponent	Min	FG-A	3FG-A	FT-A	O-D-R	PF	A	TO	B	S	Pts
11/11 -Central Mich.	27	2-4	1-2	2-2	0-2-2	3	4	0	1	4	7
11/14 Fordham	23	1-2	0-1	0-0	0-1-1	3	4	1	0	1	2
11/17 Green Bay	20	1-2	1-1	2-2	0-0-0	3	0	0	0	0	5
11/20 Washington	12	0-1	0-1	0-0	0-1-1	1	0	0	0	1	0
11/22 vs. UL-Lafayette	21	1-1	0-0	0-0	0-4-4	0	1	2	1	3	2
11/26 TCU	17	0-0	0-0	0-0	0-1-1	1	0	1	0	0	0
11/30 at Iowa	17	0-1	0-1	0-0	0-2-2	0	0	0	0	2	0
12/04 Valparaiso	25	2-4	2-4	0-0	2-4-6	0	4	3	0	1	6
12/07 Connecticut	12	1-3	1-2	0-0	0-1-1	0	0	1	0	1	3
12/10 at DePaul	31	4-7	2-4	0-0	0-1-1	1	1	0	0	1	10
12/18 at Toledo	29	1-3	0-0	0-0	0-0-0	3	3	1	0	3	2
12/20 -at Michigan St.	28	1-2	0-1	1-1	0-0-0	2	5	2	0	0	3
12/27 at Chattanooga	23	0-1	0-1	0-0	0-3-3	4	0	1	0	1	0
12/29 at NC State*	19	1-3	0-1	0-0	0-2-2	1	0	2	0	3	2
01/02 at Ga. Tech*	14	0-1	0-0	2-2	0-1-1	2	0	1	0	1	2
01/05 Wake Forest*	16	1-2	0-1	0-0	0-0-0	4	2	1	0	1	2
01/08 at Miami*	10	0-0	0-0	0-0	0-1-1	3	0	0	0	1	0
01/12 Pittsburgh*	10	0-1	0-1	2-2	0-0-0	0	0	2	0	0	2
01/16 at Tennessee	2	0-0	0-0	0-0	0-0-0	1	0	0	0	0	0
01/19 at BC*											
01/22 at UNC*											
01/26 Duke*											
01/29 Virginia*											
02/02 at Va. Tech*											
02/06 Louisville*											
02/12 Georgia Tech*											
02/16 at Clemson*											
02/19 at Syracuse*											
02/23 BC*											
02/26 Florida State*											

### CAREER AND SEASON HIGHS

Points	
Season	10, at DePaul (12/10/16)
Career	17, vs. Chattanooga (11/21/14)
Rebounds	
Season	6, vs. Valparaiso (12/04/16)
Career	8, vs. Syracuse (01/21/16)
Assists	
Season	5, at Michigan State (12/20/16)
Career	7, vs. Quinnipiac (11/25/14)
Steals	
Season	4, vs. Central Michigan (11/11/16)
Career	4, 2x, vs. Central Mich. (11/11/16)
Blocks	
Season	1, 2x, vs. UL-Lafayette (11/22/16)
Career	2, vs. Miami (02/14/16)
Field Goals Made	
Season	4, at DePaul (12/10/16)
Career	6, vs. Chattanooga (11/21/14)
3-Point FGs Made	
Season	2, 2x, at DePaul (12/10/16)
Career	5, vs. Chattanooga (11/21/14)
Free Throws Made	
Season	2, 4x, vs. Pittsburgh (01/12/17)
Career	4, vs. Holy Cross (11/23/14)
Minutes	
Season	31, at DePaul (12/10/16)
Career	31, at DePaul (12/10/16)

### CAREER STATISTICS

SEASON	GP-GS	MIN/AVG	FG-FGA	PCT	3FG-FGA	PCT	FT-FTA	PCT	ORB	DRB	REB	AVG	PF	DQ	AST	TO	BLK	STL	PTS	AVG
2014-15	28-0	320/11.4	28-84	.333	11-34	.324	20-29	.690	7	25	32	1.1	33	0	25	18	4	14	87	3.1
2015-16	31-0	371/12.0	16-53	.302	9-28	.321	29-43	.674	5	33	38	1.2	40	0	19	18	4	16	70	2.3
2016-17	19-2	356/18.7	16-38	.421	7-21	.333	9-9	1.000	2	24	26	1.4	32	0	24	18	2	24	48	2.5
<b>TOTAL</b>	<b>78-2</b>	<b>1,037/13.3</b>	<b>60-175</b>	<b>.343</b>	<b>27-83</b>	<b>.325</b>	<b>58-81</b>	<b>.716</b>	<b>14</b>	<b>82</b>	<b>96</b>	<b>1.2</b>	<b>105</b>	<b>0</b>	<b>68</b>	<b>54</b>	<b>10</b>	<b>54</b>	<b>205</b>	<b>2.6</b>



# LINDSAY ALLEN

GUARD | 5-8 | SENIOR | MITCHELLVILLE, MD. | ST. JOHN'S COLLEGE

# 15

## GAMES WITH ...

	Season	Career
Double-Figure Points	10	51
20-Plus Points	0	7
5-Rebound Games	12	39
5-Assist Games	14	80
Double-Figure Assists	3	5
5-5-5 Games	9	29
Triple Doubles	1	1

## NOTABLES

### HONORS AND AWARDS:

- 2016 Wade Trophy Watch List
- 2016-17 Nancy Lieberman Award Watch List
- 2016 Preseason WNIT All-Tournament Team
- 2016 Nancy Lieberman Award Finalist
- 2016 Naismith Trophy Midseason Top 30 List
- Senior CLASS Award Candidate
- WBCA Coaches' All-America Team Finalist
- Two-time team captain (2015-16 & 2016-17)
- Wooden Award's Midseason Top 25

### 2016-17 SEASON:

- Ranks first in the ACC and third in the country with a 3.61 assist/turnover ratio. Her 7.2 assists per game are most in the ACC and seventh-most in the country.
- Recorded her first career triple-double (previously had never finished with a double-double) with 11 points, 11 rebounds and 12 assists at Chattanooga on 12/27/16. The triple-double was the sixth in program history and the fourth consisting of points, rebounds and assists.
- Selected to the 2016 Preseason WNIT All-Tournament team after recording 13 points, five rebounds and four assists in the tournament finale versus Washington on 11/20/16.
- Scored her 1,000th point on 11/17/16 versus Green Bay and recorded her 600th assist on 11/26/16 versus TCU. She became the 35th Irish player to score 1,000 points and the first of two to do so this season (also Brianna Turner). Allen joins Skylar Diggins, Niele Ivey and Mollie Peirick as the only Irish players to score 1,000 career points and collect 600 career assists.
- Gathered a career-high 12 assists on 11/26/16 versus TCU.

### 2015-16 SEASON:

- Started all 33 games as a junior, averaging 9.3 points and a career-high 5.8 assists per game with a 2.52 assist/turnover ratio.

## 2016-17 GAME-BY-GAME

Opponent	Min	FG-A	3FG-A	FT-A	O-D-R	PF	A	TO	B	S	Pts
11/11 ·Central Mich.	19	6-8	1-2	0-0	0-5-5	0	8	0	4	13	
11/14 ·Fordham	37	5-5	0-0	3-4	2-4-6	2	5	1	0	2	13
11/17 ·Green Bay	40	1-6	0-0	6-8	0-5-5	0	8	4	0	3	8
11/20 ·Washington	40	5-12	0-1	3-6	2-3-5	2	4	2	0	1	13
11/22 ·vs. UL-Lafayette	25	1-1	0-0	0-0	1-5-6	3	9	3	0	1	2
11/26 ·TCU	32	1-3	0-0	0-0	2-2-4	1	12	2	0	3	2
11/30 ·at Iowa	37	5-13	1-2	0-0	1-5-6	2	8	1	1	5	11
12/04 ·Valparaiso	19	3-5	0-0	2-2	2-2-4	1	6	1	0	4	8
12/07 ·Connecticut	40	5-8	0-1	1-4	0-5-5	3	8	1	0	1	11
12/10 ·at DePaul	40	6-11	0-0	2-3	1-8-9	3	3	2	0	1	14
12/18 ·at Toledo	32	4-7	0-0	2-3	1-1-2	3	8	1	0	4	10
12/20 ·at Michigan St.	25	4-8	0-0	1-1	0-5-5	4	6	3	0	1	9
12/27 ·at Chattanooga	35	5-9	0-0	1-1	1-10-11	0	12	4	0	1	11
12/29 ·at NC State*	40	5-14	1-1	1-4	0-4-4	3	4	3	0	0	12
01/02 ·at Ga. Tech*	38	3-6	0-1	1-2	1-6-7	3	8	3	0	4	7
01/05 ·Wake Forest*	30	6-8	0-0	0-0	1-2-3	3	4	0	1	4	12
01/08 ·at Miami*	29	3-7	0-1	1-1	0-2-2	2	7	1	0	0	7
01/12 ·Pittsburgh*	26	1-3	0-0	0-0	0-3-3	1	7	3	0	0	2
01/16 ·at Tennessee	40	3-7	0-1	3-4	1-5-6	1	10	3	0	2	9
01/19 at BC*											
01/22 at UNC*											
01/26 Duke*											
01/29 Virginia*											
02/02 at Va. Tech*											
02/06 Louisville*											
02/12 Georgia Tech*											
02/16 at Clemson*											
02/19 at Syracuse*											
02/23 BC*											
02/26 Florida State*											

## CAREER AND SEASON HIGHS

Points	
Season	14, at DePaul (12/10/16)
Career	28, vs. Stanford (03/27/15)
Rebounds	
Season	9, at DePaul (12/10/16)
Career	9, 2x, at DePaul (12/10/16)
Assists	
Season	12, 2x, at Chattanooga (12/27/16)
Career	12, 2x, at Chattanooga (12/27/16)
Steals	
Season	5, at Iowa (11/30/16)
Career	5, 2x, at Iowa (11/30/16)
Blocks	
Season	1, 2x, vs. Wake Forest (01/05/17)
Career	2, vs. Central Michigan (12/22/13)
Field Goals Made	
Season	6, 3x, vs. Wake Forest (01/05/17)
Career	10, 2x, vs. Indiana (03/21/16)
3-Point FGs Made	
Season	1, 3x, at NC State (12/29/16)
Career	4, 2x, vs. Stanford (03/27/15)
Free Throws Made	
Season	6, vs. Green Bay (11/17/16)
Career	6, 5x, vs. Green Bay (11/17/16)
Minutes	
Season	40, 5x, at NC State (12/29/16)
Career	40, 9x, at NC State (12/29/16)

## CAREER STATISTICS

SEASON	GP-GS	MIN/AVG	FG-FGA	PCT	3FG-FGA	PCT	FT-FTA	PCT	ORB	DRB	REB	AVG	PF	DQ	AST	TO	BLK	STL	PTS	AVG
2013-14	38-38	1017/26.8	77-155	.497	15-42	.357	66-81	.815	11	79	90	2.4	81	0	150	67	9	49	235	6.2
2014-15	39-39	1211/31.1	155-297	.522	20-54	.370	76-89	.854	23	115	138	3.54	75	2	205	96	3	52	406	10.4
2015-16	35-35	1047/29.9	127-255	.498	8-30	.267	65-91	.714	21	110	131	3.7	69	0	204	81	3	45	327	9.3
2016-17	19-19	624/32.8	72-141	.511	3-10	.300	27-43	.628	16	82	98	5.2	37	0	137	38	2	41	174	9.2
<b>TOTAL</b>	<b>131-131</b>	<b>3,899/29.8</b>	<b>431-848</b>	<b>.508</b>	<b>46-136</b>	<b>.338</b>	<b>234-304</b>	<b>.770</b>	<b>71</b>	<b>386</b>	<b>457</b>	<b>3.5</b>	<b>262</b>	<b>2</b>	<b>696</b>	<b>282</b>	<b>17</b>	<b>187</b>	<b>1,142</b>	<b>8.7</b>





# ALI PATBERG

GUARD | 5-10 | SOPHOMORE | COLUMBUS, IND. | COLUMBUS NORTH

# 20

### GAMES WITH ...

	Season	Career
Double Figure Points	0	0
20-Plus Points	0	0
30-Plus Points	0	0
10-Plus Rebounds	0	0
10-Plus Assists	0	0
Double-Double	0	0

### NOTABLES

#### HONORS AND AWARDS:

- 2015 MaxPreps National High School Player of the Year
- 2015 McDonald's High School All-American

#### 2016-17 SEASON:

- Scored her first career points with two free throws versus Pittsburgh on 1/12/17.
- After being sidelined for eight games due to illness, made her return to the court on 12/18/16 at Toledo.
- Recorded three rebounds and three assists in 14 minutes against Central Michigan in her college debut.

#### 2015-16 SEASON:

- Did not play due to injury.

### 2016-17 GAME-BY-GAME

Opponent	Min	FG-A	3FG-A	FT-A	O-D-R	PF	A	TO	B	S	Pts
11/11 Central Mich.	14	0-0	0-0	0-0	0-3-3	1	3	0	0	0	0
11/14 Fordham	7	0-0	0-0	0-0	0-1-1	2	0	0	0	1	0
11/17 Green Bay					DNP						
11/20 Washington					DNP						
11/22 vs. UL-Lafayette					DNP						
11/26 TCU					DNP						
11/30 at Iowa					DNP						
12/04 Valparaiso					DNP						
12/07 Connecticut					DNP						
12/10 at DePaul					DNP						
12/18 at Toledo	3	0-0	0-0	0-0	0-1-1	0	0	0	0	0	0
12/20 at Michigan St.	1	0-0	0-0	0-0	0-0-0	0	0	0	0	0	0
12/27 at Chattanooga	3	0-0	0-0	0-0	0-1-1	0	0	0	0	0	0
12/29 at NC State*					DNP						
01/02 at Ga. Tech*	2	0-0	0-0	0-0	0-0-0	1	0	0	0	0	0
01/05 Wake Forest*	7	0-0	0-0	0-0	1-2-3	0	1	0	0	0	0
01/08 at Miami*	11	0-0	0-0	0-2	0-0-0	2	1	2	0	0	0
01/12 Pittsburgh*	14	0-0	0-0	2-2	1-2-3	1	1	1	0	0	2
01/16 at Tennessee					DNP						
01/19 at BC*											
01/22 at UNC*											
01/26 Duke*											
01/29 Virginia*											
02/02 at Va. Tech*											
02/06 Louisville*											
02/12 Georgia Tech*											
02/16 at Clemson*											
02/19 at Syracuse*											
02/23 BC*											
02/26 Florida State*											

### CAREER AND SEASON HIGHS

Points	Rebounds	Assists	Steals	Blocks	Field Goals Made	3-Point FGs Made	Free Throws Made	Minutes
Season 2, vs. Pittsburgh (01/12/17)	Season 3, 3x, vs. Pittsburgh (01/12/17)	Season 3, vs. Central Michigan (11/11/16)	Season 1, vs. Fordham (11/14/16)	Season -	Season -	Season -	Season 2, vs. Pittsburgh (01/12/17)	Season 14, 2x, vs. Pittsburgh (01/12/17)
Career 2, vs. Pittsburgh (01/12/17)	Career 3, 3x, vs. Pittsburgh (01/12/17)	Career 3, vs. Central Michigan (11/11/16)	Career 1, vs. Fordham (11/14/16)	Career -	Career -	Career -	Career 2, vs. Pittsburgh (01/12/17)	Career 14, 2x, vs. Pittsburgh (01/12/17)

### CAREER STATISTICS

SEASON	GP-GS	MIN/AVG	FG-FGA	PCT	3FG-FGA	PCT	FT-FTA	PCT	ORB	DRB	REB	AVG	PF	DQ	AST	TO	BLK	STL	PTS	AVG
2015-16	DNP - Injury																			
2016-17	9-0	62/6.9	0-0	.000	0-0	.000	2-4	.500	2	10	12	1.3	7	0	6	3	0	1	2	0.2
<b>TOTAL</b>	<b>9-0</b>	<b>62/6.9</b>	<b>0-0</b>	<b>.000</b>	<b>0-0</b>	<b>.000</b>	<b>2-4</b>	<b>.500</b>	<b>2</b>	<b>10</b>	<b>12</b>	<b>1.3</b>	<b>7</b>	<b>0</b>	<b>6</b>	<b>3</b>	<b>0</b>	<b>1</b>	<b>2</b>	<b>0.2</b>



# KRISTINA NELSON

FORWARD | 6-4 | SENIOR | BUFORD, GA. | BUFORD

# 21

### GAMES WITH ...

	Season	Career
Double Figure Points	1	3
20-Plus Points	0	0
30-Plus Points	0	0
5-Plus Rebounds	8	13
10-Plus Rebounds	0	0
Double-Double	0	0

### NOTABLES

#### HONORS AND AWARDS:

- 2016 ACC Academic Honor Roll

#### 2016-17 SEASON:

- Has recorded eight five-plus rebound games this season and 13 such games in her career. Needs just two rebounds to equal her 2015-16 rebound total (71 this season; 73 in 2015-16).
- Collected a career-high nine rebounds and two steals in the team's season opener versus Central Michigan on 11/11/16.

### 2016-17 GAME-BY-GAME

Opponent	Min	FG-A	3FG-A	FT-A	O-D-R	PF	A	TO	B	S	Pts
11/11 Central Mich.	20	4-10	0-0	0-0	4-5-9	2	2	1	1	2	8
11/14 Fordham	18	3-6	0-0	3-5	2-5-7	4	1	3	1	1	9
11/17 Green Bay	9	0-5	0-0	0-0	0-1-1	2	0	2	1	0	0
11/20 Washington	16	2-7	0-0	1-2	0-6-6	3	3	1	0	0	5
11/22 vs. UL-Lafayette	13	2-3	0-0	1-2	2-3-5	5	2	6	3	1	5
11/26 TCU	15	0-4	0-0	2-2	1-1-2	3	1	1	1	1	2
11/30 at Iowa	13	2-3	0-0	0-0	1-2-3	2	0	0	0	0	4
12/04 Valparaiso	24	4-6	0-0	0-0	0-6-6	4	3	2	4	1	8
12/07 Connecticut	7	1-3	0-0	0-0	0-2-2	1	1	1	0	0	2
12/10 at DePaul	10	1-7	0-0	0-0	3-1-4	3	0	2	0	0	2
12/18 at Toledo	9	0-2	0-0	2-4	0-0-0	0	1	1	0	1	2
12/20 at Michigan St.	1	0-0	0-0	0-0	0-0-0	0	0	2	0	0	0
12/27 at Chattanooga	12	4-5	0-0	0-0	1-2-3	5	0	1	0	0	8
12/29 at NC State*	6	1-3	0-0	0-0	0-1-1	0	0	2	0	0	2
01/02 at Ga. Tech*	13	2-3	0-0	1-2	2-3-5	2	1	3	1	0	5
01/05 Wake Forest*	19	3-5	0-0	0-0	0-6-6	4	5	4	0	0	6
01/08 at Miami*	8	2-3	0-0	0-2	1-1-2	0	0	2	0	0	4
01/12 Pittsburgh*	22	3-6	0-0	7-10	5-2-7	2	0	2	0	2	13
01/16 at Tennessee	13	1-2	0-0	0-0	0-2-2	3	1	2	0	0	2
01/19 at BC*											
01/22 at UNC*											
01/26 Duke*											
01/29 Virginia*											
02/02 at Va. Tech*											
02/06 Louisville*											
02/12 Georgia Tech*											
02/16 at Clemson*											
02/19 at Syracuse*											
02/23 BC*											
02/26 Florida State*											

### CAREER AND SEASON HIGHS

Points	Rebounds	Assists	Steals	Blocks	Field Goals Made	3-Point FGs Made	Free Throws Made	Minutes
Season 13, vs. Pittsburgh (01/12/17)	Season 9, vs. Central Michigan (11/11/16)	Season 5, vs. Wake Forest (01/05/17)	Season 2, 2x, vs. Pittsburgh (01/12/17)	Season 4, vs. Valparaiso (12/04/16)	Season 4, 3x, at Chattanooga (12/27/16)	Season -	Season 7 vs. Pittsburgh (01/12/17)	Season 24, vs. Valparaiso (12/04/16)
Career 13, vs. Pittsburgh (01/12/17)	Career 9, vs. Central Michigan (11/11/16)	Career 5, vs. Wake Forest (01/05/17)	Career 2, 2x, vs. Pittsburgh (01/12/17)	Career 4, vs. Valparaiso (12/04/16)	Career 5, vs. Wake Forest (02/18/16)	Career -	Career 7 vs. Pittsburgh (01/12/17)	Career 24, vs. Valparaiso (12/04/16)

### CAREER STATISTICS

SEASON	GP-GS	MIN/AVG	FG-FGA	PCT	3FG-FGA	PCT	FT-FTA	PCT	ORB	DRB	REB	AVG	PF	DQ	AST	TO	BLK	STL	PTS	AVG
2013-14	32-0	129/4.0	28-50	.560	0-0	.000	9-17	.529	9	21	30	0.94	39	1	7	17	3	1	65	2.0
2014-15	DNP-Injury																			
2015-16	31-0	259/8.4	37-75	.493	0-0	.000	13-22	.591	29	44	73	2.4	45	0	17	31	12	4	87	2.8
2016-17	20-0	248/13.1	35-83	.422	0-0	.000	17-29	.586	22	49	71	3.7	45	2	21	38	12	9	87	4.6
<b>TOTAL</b>	<b>81-0</b>	<b>636/7.9</b>	<b>100-208</b>	<b>.481</b>	<b>0-0</b>	<b>.000</b>	<b>39-68</b>	<b>.574</b>	<b>60</b>	<b>114</b>	<b>174</b>	<b>2.1</b>	<b>129</b>	<b>3</b>	<b>45</b>	<b>86</b>	<b>27</b>	<b>14</b>	<b>239</b>	<b>3.0</b>



# ERIN BOLEY

FORWARD | 6-2 | FRESHMAN | HODGENVILLE, KY. | ELIZABETHTOWN

# 22

### GAMES WITH ...

	Season	Career
5-Point Games	13	13
Double Figure Points	4	4
20-Plus Points	0	0
5-Plus Rebounds	2	2
5-Plus Assists	0	0
Double-Double	0	0

### NOTABLES

#### HONORS AND AWARDS:

- 2016 McDonald's All-American
- 2016 Gatorade National Player of the Year
- Three-time Kentucky Gatorade Player of the Year

#### 2016-17 SEASON:

- Has averaged 6.1 points and averaged just 12.1 minutes of play this season.
- In the team's win at Michigan State on 12/20/16, she scored six points and collected four rebounds in just six minutes of action.
- Scored a season-high 15 points in the team's win over Valparaiso on 12/04/16.
- Scored eight points and collected two rebounds in her college debut versus Central Michigan on 11/11/16.

#### HIGH SCHOOL:

- Competed in the 2015 FIBA 3x3 U18 World Championship in Hungary and guided her team to a second-place finish.
- Averaged 20.7 points, 10 rebounds and four steals as a senior at Elizabethtown High School.

### 2016-17 GAME-BY-GAME

Opponent	Min	FG-A	3FG-A	FT-A	O-D-R	PF	A	TO	B	S	Pts
11/11 Central Mich.	25	2-6	2-5	2-2	1-1-2	2	3	1	0	0	8
11/14 Fordham	17	1-6	1-4	4-4	0-1-1	0	0	2	0	0	7
11/17 Green Bay	5	0-4	0-1	0-0	1-2-3	0	0	0	0	1	0
11/20 Washington	1	0-1	0-0	0-0	0-0-0	0	0	0	0	0	0
11/22 vs. UL-Lafayette	17	3-9	0-5	1-1	2-6-8	0	1	1	0	0	8
11/26 TCU	11	3-4	3-4	1-2	0-3-3	0	0	0	0	0	10
11/30 at Iowa	7	2-4	1-3	0-0	0-4-4	1	0	0	0	0	5
12/04 Valparaiso	22	5-8	3-5	2-2	0-2-2	0	1	0	0	2	15
12/07 Connecticut	2	1-2	1-1	0-0	0-0-0	0	0	0	0	0	3
12/10 at DePaul	18	2-4	1-3	2-2	1-1-2	2	0	2	0	0	7
12/18 at Toledo	14	4-7	3-5	1-1	0-1-1	1	1	1	1	0	12
12/20 at Michigan St.	6	1-1	0-0	4-4	1-3-4	1	0	0	0	0	6
12/27 at Chattanooga	16	2-3	0-1	3-3	1-5-6	0	0	2	0	0	7
12/29 at NC State*	14	1-5	1-3	0-0	1-0-1	1	1	1	0	0	3
01/02 at Ga. Tech*	14	2-8	1-5	0-0	1-0-1	0	1	0	0	0	5
01/05 Wake Forest*	16	4-7	2-4	1-2	1-0-1	0	2	2	0	3	11
01/08 at Miami*	4	0-1	0-0	0-0	0-1-1	0	0	0	0	0	0
01/12 Pittsburgh*	17	3-7	1-3	0-0	1-2-3	2	1	1	0	0	7
01/16 at Tennessee	3	1-2	1-1	0-0	0-0-0	0	0	0	0	0	3
01/19 at BC*											
01/22 at UNC*											
01/26 Duke*											
01/29 Virginia*											
02/02 at Va. Tech*											
02/06 Louisville*											
02/12 Georgia Tech*											
02/16 at Clemson*											
02/19 at Syracuse*											
02/23 BC*											
02/26 Florida State*											

### CAREER AND SEASON HIGHS

Points	Rebounds	Assists	Steals	Blocks	Field Goals Made	3-Point FGs Made	Free Throws Made	Minutes
Season 15, vs. Valparaiso (12/04/16)	Season 8, vs. UL-Lafayette (11/22/16)	Season 3, vs. Central Michigan (11/11/16)	Season 3, vs. Wake Forest (01/05/17)	Season -	Season 5, vs. Valparaiso (12/04/16)	Season 3, 3x, at Toledo (12/18/16)	Season 4, 2x, at Michigan State (12/20/16)	Season 25, vs. Central Michigan (11/11/16)
Career 15, vs. Valparaiso (12/04/16)	Career 8, vs. UL-Lafayette (11/22/16)	Career 3, vs. Central Michigan (11/11/16)	Career 3, vs. Wake Forest (01/05/17)	Career -	Career 5, vs. Valparaiso (12/04/16)	Career 3, 3x, at Toledo (12/18/16)	Career 4, 2x, at Michigan State (12/20/16)	Career 25, vs. Central Michigan (11/11/16)

### CAREER STATISTICS

SEASON	GP-GS	MIN/AVG	FG-FGA	PCT	3FG-FGA	PCT	FT-FTA	PCT	ORB	DRB	REB	AVG	PF	DQ	AST	TO	BLK	STL	PTS	AVG
2016-17	19-0	229/12.1	37-89	.416	21-53	.396	21-23	.913	11	32	43	2.3	10	0	11	13	0	7	116	6.1
<b>TOTAL</b>	<b>19-0</b>	<b>229/12.1</b>	<b>37-89</b>	<b>.416</b>	<b>21-53</b>	<b>.396</b>	<b>21-23</b>	<b>.913</b>	<b>11</b>	<b>32</b>	<b>43</b>	<b>2.3</b>	<b>10</b>	<b>0</b>	<b>11</b>	<b>13</b>	<b>0</b>	<b>7</b>	<b>116</b>	<b>6.1</b>



# ARIKE OGUNBOWALE

GUARD | 5-8 | SOPHOMORE | MILWAUKEE, WIS. | DIVINE SAVIOR HOLY ANGELS

# 24

### GAMES WITH ...

	Season	Career
Double Figure Points	15	37
20-Plus Points	2	3
30-Plus Points	1	1
5-Plus Rebounds	4	14
5-Plus Assists	0	0
Double-Double	0	0

### NOTABLES

#### HONORS AND AWARDS:

- ESPNW Player of the Week (November 21, 2016)
- ACC Player of the Week (November 14, 2016)
- 2016 Preseason WNIT MVP
- 2016 ACC All-Freshman Team
- 2016 ACC All-Academic Team

#### 2016-17 SEASON:

- Led all scorers with 22 points on 01/05/17 versus Wake Forest and matched her career high with four assists.
- Earned Preseason WNIT Most Valuable Player honors after scoring a team-high 17 points with five rebounds, four steals and three assists in the championship game versus Washington on 11/20/16.
- Was named ESPNW Player of the Week on 11/21/16 after recording double-figures in each game of the Preseason WNIT. She averaged 19.5 points per game in the tournament.
- Scored a career-high 30 points in the season opener on 11/11/16 versus Central Michigan and was named Atlantic Coast Conference Player of the Week for that week.

#### 2015-16 SEASON:

- Appeared in all 35 games, averaging 19.3 minutes per game.
- Ranked 26th in the ACC in scoring with 11.4 points per game.

### 2016-17 GAME-BY-GAME

Opponent	Min	FG-A	3FG-A	FT-A	O-D-R	PF	A	TO	B	S	Pts
11/11 ·Central Mich.	23	12-13	5-5	1-1	1-2-3	1	2	1	0	2	30
11/14 ·Fordham	25	5-11	0-0	3-3	1-3-4	2	0	2	0	1	13
11/17 ·Green Bay	34	7-16	2-4	2-2	1-1-2	2	0	2	0	3	18
11/20 ·Washington	33	8-17	1-3	0-2	0-5-5	0	3	2	0	4	17
11/22 ·vs. UL-Lafayette	19	4-12	0-3	1-4	1-3-4	3	2	2	0	2	9
11/26 ·TCU	29	6-17	5-6	2-2	4-3-7	0	2	1	1	0	19
11/30 ·at Iowa	33	5-13	1-2	5-6	1-1-2	3	1	4	0	1	16
12/04 ·Valparaiso	18	8-12	1-4	1-1	3-1-4	0	4	0	0	3	18
12/07 ·Connecticut	32	4-14	0-4	1-2	1-1-2	3	1	2	0	1	9
12/10 ·at DePaul	29	7-15	1-4	2-4	2-4-6	3	1	0	1	2	17
12/18 ·at Toledo	26	2-11	0-4	2-4	0-1-1	3	2	3	0	3	6
12/20 at Michigan St.	33	5-13	0-2	1-2	0-6-6	4	3	1	0	0	11
12/27 ·at Chattanooga	29	5-12	1-1	2-2	0-3-3	1	0	0	1	1	13
12/29 ·at NC State*	22	3-9	0-1	0-0	2-2-4	2	3	2	0	0	6
01/02 ·at Ga. Tech*	32	8-18	2-6	0-0	1-3-4	2	0	2	0	1	18
01/05 ·Wake Forest*	26	8-11	4-5	2-3	0-3-3	1	4	0	0	0	22
01/08 ·at Miami*	19	5-12	0-3	1-1	0-4-4	1	1	4	1	1	11
01/12 ·Pittsburgh*	27	6-11	5-8	2-2	0-1-1	0	1	0	0	0	19
01/16 ·at Tennessee	29	6-14	1-1	1-1	0-2-2	1	0	3	0	1	14
01/19 at BC*											
01/22 at UNC*											
01/26 Duke*											
01/29 Virginia*											
02/02 at Va. Tech*											
02/06 Louisville*											
02/12 Georgia Tech*											
02/16 at Clemson*											
02/19 at Syracuse*											
02/23 BC*											
02/26 Florida State*											

### CAREER AND SEASON HIGHS

Points	
Season	30, vs. Central Michigan (11/11/16)
Career	30, vs. Central Michigan (11/11/16)
Rebounds	
Season	7, vs. TCU (11/26/16)
Career	9, at Pittsburgh (01/03/16)
Assists	
Season	4, 2x, vs. Wake Forest (01/05/17)
Career	4, 4x, vs. Wake Forest (01/05/17)
Steals	
Season	4, vs. Washington (11/20/16)
Career	3, vs. Green Bay (11/17/16)
Blocks	
Season	1, 4x, at Miami (01/08/17)
Career	1, 4x, at Miami (01/08/17)
Field Goals Made	
Season	12, vs. Central Michigan (11/11/16)
Career	12, vs. Central Michigan (11/11/16)
3-Point FGs Made	
Season	5, 3x, vs. Pittsburgh (01/12/17)
Career	5, 3x, vs. Pittsburgh (01/12/17)
Free Throws Made	
Season	5, at Iowa (11/30/16)
Career	8, vs. Miami (02/14/16)
Minutes	
Season	34, vs. Green Bay (11/17/16)
Career	34, vs. Green Bay (11/17/16)

### CAREER STATISTICS

SEASON	GP-GS	MIN/AVG	FG-FGA	PCT	3FG-FGA	PCT	FT-FTA	PCT	ORB	DRB	REB	AVG	PF	DQ	AST	TO	BLK	STL	PTS	AVG
2015-16	35-0	676/19.3	143-330	.433	18-46	.391	94-131	.718	48	71	119	3.4	60	0	41	69	3	22	398	11.4
2016-17	19-18	518/27.3	114-251	.454	29-66	.439	29-42	.690	18	49	67	3.5	32	0	30	31	4	26	286	15.1
<b>TOTAL</b>	<b>54-18</b>	<b>1,194/22.1</b>	<b>257-581</b>	<b>.442</b>	<b>47-112</b>	<b>.420</b>	<b>123-173</b>	<b>.711</b>	<b>66</b>	<b>120</b>	<b>186</b>	<b>3.4</b>	<b>92</b>	<b>0</b>	<b>71</b>	<b>100</b>	<b>7</b>	<b>48</b>	<b>684</b>	<b>12.7</b>



# KATHRYN WESTBELD

FORWARD | 6-2 | JUNIOR | KETTERING, OHIO | KETTERING FAIRMONT

# 33

## GAMES WITH ...

	Season	Career
Double Figure Points	8	30
20-Plus Points	0	0
30-Plus Points	0	0
10-Plus Rebounds	2	6
10-Plus Assists	0	0
Double-Double	1	3

## NOTABLES

### 2016-17 SEASON:

- Equaled her season high in points (14) and career high in blocks (2) in the team's win at Miami on 01/08/17.
- Recorded her first double-double of the season and the third of her career with 12 points and 11 rebounds at Michigan State on 12/20/16.
- Tied a career high in assists (5) on 12/18/16 at Toledo.
- Has started all 19 games and scored in double figures eight times.
- Scored a season-high 14 points with eight rebounds and three assists in Notre Dame's win over Washington on 11/20/16.

### 2015-16 SEASON:

- Started 33 games and averaged 7.9 points, 5.6 rebounds and 2.0 assists per game with a .528 field-goal percentage, ranking 11th in the ACC.

## 2016-17 GAME-BY-GAME

Opponent	Min	FG-A	3FG-A	FT-A	O-D-R	PF	A	TO	B	S	Pts
11/11 ·Central Mich.	15	3-4	0-1	0-0	0-4-4	2	1	1	0	0	6
11/14 ·Fordham	24	3-10	0-0	0-0	4-7-11	0	1	2	1	0	6
11/17 ·Green Bay	26	4-6	0-1	2-4	3-5-8	2	1	0	0	2	10
11/20 ·Washington	36	6-12	2-2	0-0	1-7-8	3	3	2	0	3	14
11/22 ·vs. UL-Lafayette	24	5-6	0-0	0-0	2-5-7	1	2	1	2	2	10
11/26 ·TCU	24	5-7	0-1	2-2	3-4-7	3	1	1	2	4	12
11/30 ·at Iowa	23	4-5	0-0	0-1	1-2-3	4	0	2	0	0	8
12/04 ·Valparaiso	21	5-9	0-1	0-0	1-3-4	0	3	4	0	2	10
12/07 ·Connecticut	23	4-7	0-1	0-0	2-1-3	3	0	7	0	2	8
12/10 ·at DePaul	17	2-3	0-0	0-0	2-5-7	2	2	2	0	0	4
12/18 ·at Toledo	27	2-5	0-0	4-5	5-2-7	3	5	2	0	2	8
12/20 ·at Michigan St.	33	6-9	0-0	0-0	4-7-11	0	2	0	1	0	12
12/27 ·at Chattanooga	23	4-8	0-0	3-4	3-5-8	0	4	2	2	0	11
12/29 ·at NC State*	26	4-5	0-0	0-0	2-4-6	2	1	0	0	1	8
01/02 ·at Ga. Tech*	16	1-3	0-0	0-0	2-1-3	1	1	3	0	0	2
01/05 ·Wake Forest*	18	4-5	0-0	0-0	2-0-2	1	2	1	0	0	8
01/08 ·at Miami*	31	6-11	0-1	2-2	3-2-5	1	0	1	2	3	14
01/12 ·Pittsburgh*	18	3-4	0-1	2-2	0-1-1	2	3	1	0	1	8
01/16 ·at Tennessee	31	2-6	0-0	0-0	0-2-2	4	3	0	0	1	4
01/19 at BC*											
01/22 at UNC*											
01/26 Duke*											
01/29 Virginia*											
02/02 at Va. Tech*											
02/06 Louisville*											
02/12 Georgia Tech*											
02/16 at Clemson*											
02/19 at Syracuse*											
02/23 BC*											
02/26 Florida State*											

## CAREER AND SEASON HIGHS

Points	
Season	14, 2x, at Miami (01/08/17)
Career	17, at Virginia Tech (01/29/15)
Rebounds	
Season	11, 2x, at MSU (12/20/16)
Career	14, at TCU (12/12/15)
Assists	
Season	5, at Toledo (12/18/16)
Career	5, 2x, at Toledo (12/18/16)
Steals	
Season	4, vs. TCU (11/26/16)
Career	4, 3x, vs. TCU (11/26/16)
Blocks	
Season	2, 4x, at Miami (01/08/17)
Career	2, 5x, at Miami (01/08/17)
Field Goals Made	
Season	6, 3x, at Miami (01/08/17)
Career	8, at Virginia Tech (01/29/15)
3-Point FGs Made	
Season	2, vs. Washington (11/20/16)
Career	2, 2x, vs. Washington (11/20/16)
Free Throws Made	
Season	4, at Toledo (12/18/16)
Career	6, vs. Quinnipiac (11/25/14)
Minutes	
Season	36, vs. Washington (11/20/16)
Career	38, vs. UCLA (11/28/15)

## CAREER STATISTICS

SEASON	GP-GS	MIN/AVG	FG-FGA	PCT	3FG-FGA	PCT	FT-FTA	PCT	ORB	DRB	REB	AVG	PF	DQ	AST	TO	BLK	STL	PTS	AVG
2014-15	39-0	676/17.3	100-190	.526	7-17	.412	54-76	.711	62	109	171	4.4	73	1	64	67	10	40	261	6.7
2015-16	33-33	682/20.7	114-216	.528	1-7	.143	32-42	.762	65	119	184	5.6	54	0	66	50	12	22	261	7.9
2016-17	19-19	456/24.0	73-125	.584	2-9	.222	15-21	.714	40	67	107	5.6	34	0	35	32	10	23	163	8.6
<b>TOTAL</b>	<b>91-52</b>	<b>1,814/19.9</b>	<b>287-531</b>	<b>.540</b>	<b>10-33</b>	<b>.303</b>	<b>101-139</b>	<b>.727</b>	<b>167</b>	<b>295</b>	<b>462</b>	<b>5.1</b>	<b>161</b>	<b>1</b>	<b>165</b>	<b>149</b>	<b>32</b>	<b>85</b>	<b>685</b>	<b>7.5</b>



# DIAMOND THOMPSON

CENTER | 6-5 | SENIOR | WHEATON, ILL. | WHEATON WARRENVILLE SOUTH

# 35

## GAMES WITH ...

	Season	Career
5-Point Games	1	2
Double Figure Points	0	0
20-Plus Points	0	0
5-Plus Rebounds	0	1
5-Plus Assists	0	0
Double-Double	0	0

## NOTABLES

### 2016-17 SEASON:

- Has been sidelined for four straight games due to a minor injury.
- Tied her career high with six points against Central Michigan in the team's season-opener.

### 2015-16 SEASON:

- Appeared in a career-high 23 games, averaging 1.1 points and 0.9 rebounds per game.

## 2016-17 GAME-BY-GAME

Opponent	Min	FG-A	3FG-A	FT-A	O-D-R	PF	A	TO	B	S	Pts
11/11 Central Mich.	11	2-4	0-0	2-5	0-2-2	4	0	3	0	0	6
11/14 Fordham	3	0-0	0-0	0-0	0-0-0	0	0	0	0	0	0
11/17 Green Bay					DNP						
11/20 Washington					DNP						
11/22 vs. UL-Lafayette	3	0-0	0-0	0-0	0-0-0	0	0	0	0	0	0
11/26 TCU	4	0-2	0-0	0-0	0-0-0	0	1	0	0	0	0
11/30 at Iowa					DNP						
12/04 Valparaiso					DNP						
12/07 Connecticut					DNP						
12/10 at DePaul					DNP						
12/18 at Toledo					DNP						
12/20 at Michigan St.	1	0-0	0-0	0-0	0-1-1	0	0	0	0	0	0
12/27 at Chattanooga	2	0-0	0-0	0-0	0-0-0	1	0	0	0	0	0
12/29 at NC State*					DNP						
01/02 at Ga. Tech*					DNP						
01/05 Wake Forest*					DNP						
01/08 at Miami*					DNP						
01/12 Pittsburgh*					DNP						
01/16 at Tennessee					DNP						
01/19 at BC*											
01/22 at UNC*											
01/26 Duke*											
01/29 Virginia*											
02/02 at Va. Tech*											
02/06 Louisville*											
02/12 Georgia Tech*											
02/16 at Clemson*											
02/19 at Syracuse*											
02/23 BC*											
02/26 Florida State*											

## CAREER AND SEASON HIGHS

Points	
Season	6, vs. Central Michigan (11/11/16)
Career	6, 3x, vs. Central Mich. (11/11/16)
Rebounds	
Season	2, vs. Central Michigan (11/11/16)
Career	5, vs. Denver (11/27/15)
Assists	
Season	1, vs. TCU (11/26/16)
Career	1, 3x, vs. TCU (11/26/16)
Steals	
Season	-
Career	1, 2x, vs. NC State (02/04/16)
Blocks	
Season	-
Career	2, vs. Clemson (02/25/16)
Field Goals Made	
Season	2, vs. Central Michigan (11/11/16)
Career	2, 4x, vs. Central Mich. (11/11/16)
3-Point FGs Made	
Season	-
Career	-
Free Throws Made	
Season	2, vs. Central Michigan (11/11/16)
Career	2, 6x, vs. Central Mich. (11/11/16)
Minutes	
Season	11, vs. Central Michigan (11/11/16)
Career	15, vs. Denver (11/27/15)

## CAREER STATISTICS

SEASON	GP-GS	MIN/AVG	FG-FGA	PCT	3FG-FGA	PCT	FT-FTA	PCT	ORB	DRB	REB	AVG	PF	DQ	AST	TO	BLK	STL	PTS	AVG
2013-14	16-0	43/2.7	4-6	.667	0-0	.000	0-0	.000	6	7	13	0.81	10	0	0	6	3	0	8	0.5
2014-15	17-0	58/3.4	3-8	.375	0-0	.000	9-15	.600	3	5	8	0.47	8	0	2	3	4	1	15	0.9
2015-16	23-0	75/3.3	9-9	1.000	0-0	.000	8-14	.571	6	14	20	0.9	24	0	0	9	5	1	26	1.1
2016-17	6-0	24/4.0	2-6	.333	0-0	.000	2-5	.400	0	3	3	0.5	5	0	1	3	0	0	6	1.0
<b>TOTAL</b>	<b>61-0</b>	<b>200/3.3</b>	<b>18-29</b>	<b>.621</b>	<b>0-0</b>	<b>.000</b>	<b>19-34</b>	<b>.558</b>	<b>15</b>	<b>29</b>	<b>44</b>	<b>0.7</b>	<b>47</b>	<b>0</b>	<b>3</b>	<b>21</b>	<b>12</b>	<b>2</b>	<b>55</b>	<b>0.9</b>

Notre Dame Combined Team Statistics (as of Jan 16, 2017)  
All games

RECORD:	OVERALL	HOME	AWAY	NEUTRAL
ALL GAMES	16-3	8-1	7-2	1-0
CONFERENCE	4-1	2-0	2-1	0-0
NON-CONFERENCE	12-2	6-1	5-1	1-0

##	Player	gp-gs	min	avg	Total		3-Point		F-Throw		Rebounds				pf	dq	a	to	blk	stl	pts	avg		
					fg-fga	fg%	3fg-fga	3fg%	ft-fa	ft%	off	def	tot	avg										
24	Arike Ogunbowale	19-18	518	27.3	114-251	.454	29-66	.439	29-42	.690	18	49	67	3.5	32	0	30	31	4	26	286	15.1		
11	Brianna Turner	19-19	528	27.8	110-192	.573	0-0	.000	46-79	.582	50	86	136	7.2	42	1	25	34	39	15	266	14.0		
03	Marina Mabrey	19-18	462	24.3	87-188	.463	33-84	.393	34-39	.872	25	42	67	3.5	35	0	52	34	10	25	241	12.7		
15	Lindsay Allen	19-19	624	32.8	72-141	.511	3-10	.300	27-43	.628	16	82	98	5.2	37	0	137	38	2	41	174	9.2		
33	Kathryn Westbeld	19-19	456	24.0	73-125	.584	2-9	.222	15-21	.714	40	67	107	5.6	34	0	35	32	10	23	163	8.6		
05	Jackie Young	15-0	291	19.4	40-79	.506	8-15	.533	19-25	.760	25	32	57	3.8	29	0	17	22	5	14	107	7.1		
22	Erin Boley	19-0	229	12.1	37-89	.416	21-53	.396	21-23	.913	11	32	43	2.3	10	0	11	13	0	7	116	6.1		
21	Kristina Nelson	19-0	248	13.1	35-83	.422	0-0	.000	17-29	.586	22	49	71	3.7	45	2	21	38	12	9	87	4.6		
14	Mychal Johnson	19-2	356	18.7	16-38	.421	7-21	.333	9-9	1.000	2	24	26	1.4	32	0	24	18	2	24	48	2.5		
35	Diamond Thompson	6-0	24	4.0	2-6	.333	0-0	.000	2-5	.400	0	3	3	0.5	5	0	1	3	0	0	6	1.0		
20	Ali Patberg	9-0	62	6.9	0-0	.000	0-0	.000	2-4	.500	2	10	12	1.3	7	0	6	3	0	1	2	0.2		
Team											38	44	82											
Total.....		19	3798		586-1192	.492	103-258	.399	221-319	.693	249	520	769	40.5	308	3	359	271	84	185	1496	78.7		
Opponents.....		19	3801		413-1086	.380	117-364	.321	169-256	.660	195	399	594	31.3	360	-	261	338	49	124	1112	58.5		

TEAM STATISTICS	ND	OPP	Date	Opponent	Score	Att.
SCORING	1496	1112	11/11/16	CENTRAL MICHIGAN	w 107-47	8454
Points per game	78.7	58.5	11/14/16	FORDHAM	w 67-36	7540
Scoring margin	+20.2	-	11/17/16	GREEN BAY	w 71-67	7817
FIELD GOALS-ATT	586-1192	413-1086	11/20/16	WASHINGTON	w 71-60	8106
Field goal pct	.492	.380	11/22/16	vs UL-Lafayette	w 91-51	767
3 POINT FG-ATT	103-258	117-364	11/26/16	TCU	w 92-59	8174
3-point FG pct	.399	.321	11/30/16	at Iowa	w 73-58	3809
3-pt FG made per game	5.4	6.2	12/4/16	VALPARAISO	w 114-54	8132
FREE THROWS-ATT	221-319	169-256	12/07/16	UCONN	L 61-72	9149
Free throw pct	.693	.660	12/10/16	at DePaul	w 75-61	3001
F-Throws made per game	11.6	8.9	12/18/16	at Toledo	w 85-68	5697
REBOUNDS	769	594	12/20/16	at Michigan State	w 79-61	7924
Rebounds per game	40.5	31.3	12/27/16	at Chattanooga	w 79-58	3388
Rebounding margin	+9.2	-	* 12/29/16	at NC State	L 62-70	3677
ASSISTS	359	261	* 1/2/17	at Georgia Tech	w 55-38	1641
Assists per game	18.9	13.7	* 1/5/17	WAKE FOREST	w 92-72	8691
TURNOVERS	271	338	* 01/08/17	at #14/14 Miami	w 67-55	1546
Turnovers per game	14.3	17.8	* 1/12/17	PITTSBURGH	w 86-54	8137
Turnover margin	+3.5	-	01/16/17	at Tennessee	L 69-71	10517
Assist/turnover ratio	1.3	0.8				
STEALS	185	124	* - Conference game			
Steals per game	9.7	6.5				
BLOCKS	84	49				
Blocks per game	4.4	2.6				
ATTENDANCE	74200	41967				
Home games-Avg/Game	9-8244	9-4578				
Neutral site-Avg/Game	-	1-767				

Score by Periods	1st	2nd	3rd	4th	Totals
Notre Dame	405	381	362	348	1496
Opponents	257	263	306	286	1112

Notre Dame Combined Team Statistics (as of Jan 12, 2017)  
Conference games

RECORD:	OVERALL	HOME	AWAY	NEUTRAL
ALL GAMES	4-1	2-0	2-1	0-0
CONFERENCE	4-1	2-0	2-1	0-0
NON-CONFERENCE	0-0	0-0	0-0	0-0

##	Player	gp-gs	min	avg	Total		3-Point		F-Throw		Rebounds				pf	dq	a	to	blk	stl	pts	avg		
					fg-fga	fg%	3fg-fga	3fg%	ft-fta	ft%	off	def	tot	avg										
24	Arike Ogunbowale	5-5	126	25.2	30-61	.492	11-23	.478	5-6	.833	3	13	16	3.2	6	0	9	8	1	2	76	15.2		
03	Marina Mabrey	5-5	128	25.6	23-49	.469	12-27	.444	7-9	.778	4	15	19	3.8	10	0	15	10	2	6	65	13.0		
11	Brianna Turner	5-5	142	28.4	21-38	.553	0-0	.000	7-15	.467	7	29	36	7.2	14	1	8	8	11	8	49	9.8		
33	Kathryn Westbeld	5-5	109	21.8	18-28	.643	0-2	.000	4-4	1.000	9	8	17	3.4	7	0	7	6	2	5	40	8.0		
15	Lindsay Allen	5-5	163	32.6	18-38	.474	1-3	.333	3-7	.429	2	17	19	3.8	12	0	30	10	1	8	40	8.0		
21	Kristina Nelson	5-0	68	13.6	11-20	.550	0-0	.000	8-14	.571	8	13	21	4.2	8	0	6	13	1	2	30	6.0		
22	Erin Boley	5-0	65	13.0	10-28	.357	5-15	.333	1-2	.500	4	3	7	1.4	3	0	5	4	0	3	26	5.2		
05	Jackie Young	5-0	96	19.2	9-23	.391	1-3	.333	7-7	1.000	11	6	17	3.4	10	0	5	7	1	3	26	5.2		
14	Mychal Johnson	5-0	69	13.8	2-7	.286	0-3	.000	4-4	1.000	0	4	4	0.8	10	0	2	6	0	6	8	1.6		
20	Ali Patberg	4-0	34	8.5	0-0	.000	0-0	.000	2-4	.500	2	4	6	1.5	4	0	3	3	0	0	2	0.5		
Team											11	13	24											
Total.....		5	1000		142-292	.486	30-76	.395	48-72	.667	61	125	186	37.2	84	1	90	78	19	43	362	72.4		
Opponents.....		5	1000		102-273	.374	30-81	.370	55-75	.733	55	97	152	30.4	93	-	61	85	13	38	289	57.8		

TEAM STATISTICS	ND	OPP	Date	Opponent	Score	Att.
SCORING	362	289	* 12/29/16	at NC State	L 62-70	3677
Points per game	72.4	57.8	* 1/2/17	at Georgia Tech	w 55-38	1641
Scoring margin	+14.6	-	* 1/5/17	WAKE FOREST	w 92-72	8691
FIELD GOALS-ATT	142-292	102-273	* 01/08/17	at #14/14 Miami	w 67-55	1546
Field goal pct	.486	.374	* 1/12/17	PITTSBURGH	w 86-54	8137
3 POINT FG-ATT	30-76	30-81	* - Conference game			
3-point FG pct	.395	.370				
3-pt FG made per game	6.0	6.0				
FREE THROWS-ATT	48-72	55-75				
Free throw pct	.667	.733				
F-Throws made per game	9.6	11.0				
REBOUNDS	186	152				
Rebounds per game	37.2	30.4				
Rebounding margin	+6.8	-				
ASSISTS	90	61				
Assists per game	18.0	12.2				
TURNOVERS	78	85				
Turnovers per game	15.6	17.0				
Turnover margin	+1.4	-				
Assist/turnover ratio	1.2	0.7				
STEALS	43	38				
Steals per game	8.6	7.6				
BLOCKS	19	13				
Blocks per game	3.8	2.6				
ATTENDANCE	16828	6864				
Home games-Avg/Game	2-8414	3-2288				
Neutral site-Avg/Game	-	0-0				

Score by Periods	1st	2nd	3rd	4th	Totals
Notre Dame	79	105	88	90	362
Opponents	65	67	80	77	289



Notre Dame Category Leaders (as of Jan 16, 2017)  
All games

Points	G	Pts	Pts/G	Scoring Average	G	Pts	Avg/G
Arike Ogunbowale	19	286	15.1	Arike Ogunbowale	19	286	15.1
Brianna Turner	19	266	14.0	Brianna Turner	19	266	14.0
Marina Mabrey	19	241	12.7	Marina Mabrey	19	241	12.7
Lindsay Allen	19	174	9.2	Lindsay Allen	19	174	9.2
Kathryn Westbeld	19	163	8.6	Kathryn Westbeld	19	163	8.6
Erin Boley	19	116	6.1	Jackie Young	15	107	7.1
Jackie Young	15	107	7.1	Erin Boley	19	116	6.1
Kristina Nelson	19	87	4.6	Kristina Nelson	19	87	4.6
Mychal Johnson	19	48	2.5	Mychal Johnson	19	48	2.5
Diamond Thompson	6	6	1.0	Diamond Thompson	6	6	1.0
Ali Patberg	9	2	0.2	Ali Patberg	9	2	0.2

FG Percentage	FG	Att	Pct	Field Goal Attempts	G	Att	Att/G
Kathryn Westbeld	73	125	.584	Arike Ogunbowale	19	251	13.2
Brianna Turner	110	192	.573	Brianna Turner	19	192	10.1
Lindsay Allen	72	141	.511	Marina Mabrey	19	188	9.9
Jackie Young	40	79	.506	Lindsay Allen	19	141	7.4
Marina Mabrey	87	188	.463	Kathryn Westbeld	19	125	6.6
Arike Ogunbowale	114	251	.454	Field Goals Made	G	Made	Made/G
Kristina Nelson	35	83	.422	Arike Ogunbowale	19	114	6.0
Mychal Johnson	16	38	.421	Brianna Turner	19	110	5.8
Erin Boley	37	89	.416	Marina Mabrey	19	87	4.6
Diamond Thompson	2	6	.333	Kathryn Westbeld	19	73	3.8
				Lindsay Allen	19	72	3.8

3-Point Percentage	3FG	Att	Pct	3-Point FG Attempts	G	Att	Att/G
Jackie Young	8	15	.533	Marina Mabrey	19	84	4.4
Arike Ogunbowale	29	66	.439	Arike Ogunbowale	19	66	3.5
Erin Boley	21	53	.396	Erin Boley	19	53	2.8
Marina Mabrey	33	84	.393	Mychal Johnson	19	21	1.1
Mychal Johnson	7	21	.333	Jackie Young	15	15	1.0
Lindsay Allen	3	10	.300	3-Point FG Made	G	Made	Made/G
Kathryn Westbeld	2	9	.222	Marina Mabrey	19	33	1.7
				Arike Ogunbowale	19	29	1.5
				Erin Boley	19	21	1.1
				Jackie Young	15	8	0.5
				Mychal Johnson	19	7	0.4

Free Throw Percent	FG	Att	Pct	Free Throw Attempts	G	Att	Att/G
Mychal Johnson	9	9	1.000	Brianna Turner	19	79	4.2
Erin Boley	21	23	.913	Lindsay Allen	19	43	2.3
Marina Mabrey	34	39	.872	Arike Ogunbowale	19	42	2.2
Jackie Young	19	25	.760	Marina Mabrey	19	39	2.1
Kathryn Westbeld	15	21	.714	Kristina Nelson	19	29	1.5
Arike Ogunbowale	29	42	.690	Free Throws Made	G	Made	Made/G
Lindsay Allen	27	43	.628	Brianna Turner	19	46	2.4
Kristina Nelson	17	29	.586	Marina Mabrey	19	34	1.8
Brianna Turner	46	79	.582	Arike Ogunbowale	19	29	1.5
Ali Patberg	2	4	.500	Lindsay Allen	19	27	1.4
Diamond Thompson	2	5	.400	Erin Boley	19	21	1.1

Notre Dame Category Leaders (as of Jan 16, 2017)  
All games

<u>Rebounds</u>	<u>G</u>	<u>Reb</u>	<u>Reb/G</u>
Brianna Turner	19	136	7.2
Kathryn Westbeld	19	107	5.6
Lindsay Allen	19	98	5.2
Kristina Nelson	19	71	3.7
Marina Mabrey	19	67	3.5
Arike Ogunbowale	19	67	3.5

<u>Rebound Average</u>	<u>G</u>	<u>Reb</u>	<u>Avg/G</u>
Brianna Turner	19	136	7.2
Kathryn Westbeld	19	107	5.6
Lindsay Allen	19	98	5.2
Jackie Young	15	57	3.8
Kristina Nelson	19	71	3.7

<u>Offensive Rebounds</u>	<u>G</u>	<u>No.</u>	<u>Avg/G</u>
Brianna Turner	19	50	2.6
Kathryn Westbeld	19	40	2.1
Marina Mabrey	19	25	1.3
Jackie Young	15	25	1.7
Kristina Nelson	19	22	1.2

<u>Defensive Rebounds</u>	<u>G</u>	<u>No.</u>	<u>Avg/G</u>
Brianna Turner	19	86	4.5
Lindsay Allen	19	82	4.3
Kathryn Westbeld	19	67	3.5
Kristina Nelson	19	49	2.6
Arike Ogunbowale	19	49	2.6

<u>Fouls</u>	<u>G</u>	<u>No.</u>	<u>Per/G</u>
Kristina Nelson	19	45	2.4
Brianna Turner	19	42	2.2
Lindsay Allen	19	37	1.9
Marina Mabrey	19	35	1.8
Kathryn Westbeld	19	34	1.8

<u>Foulouts</u>	<u>G</u>	<u>No.</u>
Kristina Nelson	19	2
Brianna Turner	19	1

<u>Assists</u>	<u>G</u>	<u>No.</u>	<u>Ast/G</u>
Lindsay Allen	19	137	7.2
Marina Mabrey	19	52	2.7
Kathryn Westbeld	19	35	1.8
Arike Ogunbowale	19	30	1.6
Brianna Turner	19	25	1.3

<u>Steals</u>	<u>G</u>	<u>No.</u>	<u>Stl/G</u>
Lindsay Allen	19	41	2.2
Arike Ogunbowale	19	26	1.4
Marina Mabrey	19	25	1.3
Mychal Johnson	19	24	1.3
Kathryn Westbeld	19	23	1.2

<u>Blocked Shots</u>	<u>G</u>	<u>No.</u>	<u>Blk/G</u>
Brianna Turner	19	39	2.1
Kristina Nelson	19	12	0.6
Kathryn Westbeld	19	10	0.5
Marina Mabrey	19	10	0.5
Jackie Young	15	5	0.3

<u>Minutes</u>	<u>G</u>	<u>No.</u>	<u>Min/G</u>
Lindsay Allen	19	624	32.8
Brianna Turner	19	528	27.8
Arike Ogunbowale	19	518	27.3
Marina Mabrey	19	462	24.3
Kathryn Westbeld	19	456	24.0

<u>Turnovers</u>	<u>G</u>	<u>No.</u>	<u>TO/G</u>
Kristina Nelson	19	38	2.0
Lindsay Allen	19	38	2.0
Marina Mabrey	19	34	1.8
Brianna Turner	19	34	1.8
Kathryn Westbeld	19	32	1.7

Notre Dame Team Game-by-Game Comparison (as of Jan 16, 2017)  
All games

Opponent	1st	2nd	Score	Mar	Total FG	FG Pct	3-Pointers	3FG Pct	Free Throws	FT Pct	Rebounds	A
CENTRAL MICHIGAN	56/20	51/27	107-47	+60	40-65/17-63	.615/.270	12-22/7-33	.545/.212	15-21/6-12	.714/.500	45/33 +12	2
FORDHAM	34/20	33/16	67-36	+31	25-59/12-52	.424/.231	1-8/2-19	.125/.105	16-22/10-15	.727/.667	46/31 +15	1
GREEN BAY	41/30	30/37	71-67	+4	23-64/25-56	.359/.446	5-13/12-25	.385/.480	20-26/5-6	.769/.833	41/34 +7	1
WASHINGTON	39/22	32/38	71-60	+11	28-67/21-57	.418/.368	4-11/7-22	.364/.318	11-20/11-14	.550/.786	46/34 +12	1
UL-Lafayette	42/20	49/31	91-51	+40	39-68/19-61	.574/.311	5-16/6-18	.313/.333	8-16/7-15	.500/.467	60/20 +40	2
TCU	37/34	55/25	92-59	+33	33-71/21-48	.465/.438	11-20/6-11	.550/.545	15-17/11-14	.882/.786	45/21 +24	2
Iowa	41/33	32/25	73-58	+15	30-67/24-53	.448/.453	4-11/4-19	.364/.211	9-13/6-16	.692/.375	34/40 (6)	1
VALPARAISO	72/23	42/31	114-54	+60	48-75/22-58	.640/.379	10-22/9-26	.455/.346	8-10/1-1	.800/1000	38/25 +13	2
UCONN	34/34	27/38	61-72	(11)	27-63/26-56	.429/.464	3-14/1-9	.214/.111	4-8/19-20	.500/.950	32/35 (3)	1
DePaul	33/27	42/34	75-61	+14	27-61/24-66	.443/.364	4-12/5-23	.333/.217	17-22/8-16	.773/.500	48/35 +13	1
Toledo	44/32	41/36	85-68	+17	32-60/26-59	.533/.441	5-12/8-20	.417/.400	16-25/8-12	.640/.667	27/40 (13)	2
Michigan State	41/33	38/28	79-61	+18	31-63/24-64	.492/.375	3-9/8-23	.333/.348	14-18/5-8	.778/.625	43/33 +10	2
Chattanooga	44/29	35/29	79-58	+21	32-57/23-60	.561/.383	1-4/9-23	.250/.391	14-20/3-10	.700/.300	46/24 +22	2
NC State	28/34	34/36	62-70	(8)	26-62/24-57	.419/.421	6-15/8-19	.400/.421	4-11/14-15	.364/.933	37/37 -	1
Georgia Tech	34/17	21/21	55-38	+17	23-57/14-58	.404/.241	4-16/1-8	.250/.125	5-10/9-20	.500/.450	40/40 -	1
WAKE FOREST	55/32	37/40	92-72	+20	39-65/25-52	.600/.481	10-16/10-18	.625/.556	4-7/12-14	.571/.857	29/28 +1	2
#14/14 Miami	30/29	37/26	67-55	+12	28-56/21-56	.500/.375	3-13/5-18	.231/.278	8-14/8-12	.571/.667	39/28 +11	1
PITTSBURGH	37/20	49/34	86-54	+32	26-52/18-50	.500/.360	7-16/6-18	.438/.333	27-30/12-14	.900/.857	41/19 +22	1
Tennessee	44/31	25/40	69-71	(2)	29-60/27-60	.483/.450	5-8/3-12	.625/.250	6-9/14-22	.667/.636	32/37 (5)	1

Note: Game totals are displayed in the format TEAM/OPPONENT for each category

Notre Dame Points-Rebounds-Assists (as of Jan 16, 2017)  
All games

Opponent	Date	Score		03	05	11	14	15	20	21
				MABREY,MAR	YOUNG,JACK	TURNER,BRI	JOHNSON,MY	ALLEN,LIND	PATBERG,AL	NELSON,KRI
CENTRAL MICHIGAN	11/11/16	107-47	w	17-3-5	DNP	12-3-1	7-2-4	13-5-8	0-3-3	8-9-2
FORDHAM	11/14/16	67-36	w	7-2-0	DNP	10-8-0	2-1-4	13-6-5	0-1-0	9-7-1
GREEN BAY	11/17/16	71-67	w	13-4-3	3-7-1	14-4-3	5-0-0	8-5-8	DNP	0-1-0
WASHINGTON	11/20/16	71-60	w	4-2-2	8-2-0	10-12-0	0-1-0	13-5-4	DNP	5-6-3
vs UL-Lafayette	11/22/16	91-51	w	27-3-3	13-6-4	16-12-1	2-4-1	2-6-9	DNP	5-5-2
TCU	11/26/16	92-59	w	17-5-2	12-5-3	18-3-1	0-1-0	2-4-12	DNP	2-2-1
at Iowa	11/30/16	73-58	w	9-4-2	5-3-0	15-4-1	0-2-0	11-6-8	DNP	4-3-0
VALPARAISO	12/4/16	114-54	w	16-1-4	20-5-3	13-4-1	6-6-4	8-4-6	DNP	8-6-3
UCONN	12/07/16	61-72	L	2-2-1	7-4-0	16-12-3	3-1-0	11-5-8	DNP	2-2-1
at DePaul	12/10/16	75-61	w	7-6-4	DNP	14-11-2	10-1-1	14-9-3	DNP	2-4-0
at Toledo	12/18/16	85-68	w	19-6-3	DNP	26-8-2	2-0-3	10-2-8	0-1-0	2-0-1
at Michigan State	12/20/16	79-61	w	19-5-5	0-0-0	19-7-1	3-0-5	9-5-6	0-0-0	0-0-0
at Chattanooga	12/27/16	79-58	w	2-1-2	3-3-1	24-5-1	0-3-0	11-11-12	0-1-0	8-3-0
at NC State	12/29/16	62-70	L	22-5-4	0-1-0	7-3-2	2-2-0	12-4-4	DNP	2-1-0
at Georgia Tech	1/2/17	55-38	w	7-1-4	0-1-0	9-11-0	2-1-0	7-7-8	0-0-0	5-5-1
WAKE FOREST	1/5/17	92-72	w	14-3-1	2-1-3	15-6-4	2-0-2	12-3-4	0-3-1	6-6-5
at #14/14 Miami	01/08/17	67-55	w	15-5-4	9-6-1	7-10-2	0-1-0	7-2-7	0-0-1	4-2-0
PITTSBURGH	1/12/17	86-54	w	7-5-2	15-8-1	11-6-0	2-0-0	2-3-7	2-3-1	13-7-0
at Tennessee	01/16/17	69-71	L	17-4-1	10-5-0	10-7-0	0-0-0	9-6-10	DNP	2-2-1

Opponent	Date	Score		22	24	33	35
				BOLEY,ERIN	OGUNBOWAL	WESTBELD,K	THOMPSON,D
CENTRAL MICHIGAN	11/11/16	107-47	w	8-2-3	30-3-2	6-4-1	6-2-0
FORDHAM	11/14/16	67-36	w	7-1-0	13-4-0	6-11-1	0-0-0
GREEN BAY	11/17/16	71-67	w	0-3-0	18-2-0	10-8-1	DNP
WASHINGTON	11/20/16	71-60	w	0-0-0	17-5-3	14-8-3	DNP
vs UL-Lafayette	11/22/16	91-51	w	7-8-1	9-4-2	10-7-2	0-0-0
TCU	11/26/16	92-59	w	10-3-0	19-7-2	12-7-1	0-0-1
at Iowa	11/30/16	73-58	w	5-4-0	16-2-1	8-3-0	DNP
VALPARAISO	12/4/16	114-54	w	15-2-1	18-4-4	10-4-3	DNP
UCONN	12/07/16	61-72	L	3-0-0	9-2-1	8-3-0	DNP
at DePaul	12/10/16	75-61	w	7-2-0	17-6-1	4-7-2	DNP
at Toledo	12/18/16	85-68	w	12-1-1	6-1-2	8-7-5	DNP
at Michigan State	12/20/16	79-61	w	6-4-0	11-6-3	12-11-2	0-1-0
at Chattanooga	12/27/16	79-58	w	7-6-0	13-3-0	11-8-4	0-0-0
at NC State	12/29/16	62-70	L	3-1-1	6-4-3	8-6-1	DNP
at Georgia Tech	1/2/17	55-38	w	5-1-1	18-4-0	2-3-1	DNP
WAKE FOREST	1/5/17	92-72	w	11-1-2	22-3-4	8-2-2	DNP
at #14/14 Miami	01/08/17	67-55	w	0-1-0	11-4-1	14-5-0	DNP
PITTSBURGH	1/12/17	86-54	w	7-3-1	19-1-1	8-1-3	DNP
at Tennessee	01/16/17	69-71	L	3-0-0	14-2-0	4-2-3	DNP

Notre Dame Game-by-Game Highs (as of Jan 16, 2017)  
All games

Opponent	Date	Score	Points	Rebounds	Assists	Steals	Blocked shots
CENTRAL MICHIGAN	11/11/16	107-47	30-Arike Ogunbowale	9-Kristina Nelson	8-Lindsay Allen	4-Mychal Johnson Lindsay Allen	1-Mychal Johnson Kristina Nelson Marina Mabrey
FORDHAM	11/14/16	67-36	13-Lindsay Allen Arike Ogunbowale	11-Kathryn Westbeld	5-Lindsay Allen	2-Lindsay Allen	1-Kristina Nelson Brianna Turner Kathryn Westbeld
GREEN BAY	11/17/16	71-67	18-Arike Ogunbowale	8-Kathryn Westbeld	8-Lindsay Allen	3-Arike Ogunbowale Lindsay Allen	2-Brianna Turner
WASHINGTON	11/20/16	71-60	17-Arike Ogunbowale	12-Brianna Turner	4-Lindsay Allen	4-Marina Mabrey Arike Ogunbowale	1-Brianna Turner Jackie Young
vs UL-Lafayette	11/22/16	91-51	27-Marina Mabrey	12-Brianna Turner	9-Lindsay Allen	3-Mychal Johnson Marina Mabrey	3-Kristina Nelson
TCU	11/26/16	92-59	19-Arike Ogunbowale	7-Kathryn Westbeld Arike Ogunbowale	12-Lindsay Allen	4-Kathryn Westbeld	2-Kathryn Westbeld
at Iowa	11/30/16	73-58	16-Arike Ogunbowale	6-Lindsay Allen	8-Lindsay Allen	5-Lindsay Allen Marina Mabrey	1-Lindsay Allen Marina Mabrey
VALPARAISO	12/4/16	114-54	20-Jackie Young	6-Kristina Nelson Mychal Johnson	6-Lindsay Allen	6-Jackie Young	4-Kristina Nelson
UCONN	12/07/16	61-72	16-Brianna Turner	12-Brianna Turner	8-Lindsay Allen	4-Jackie Young	2-Brianna Turner
at DePaul	12/10/16	75-61	17-Arike Ogunbowale	11-Brianna Turner	4-Marina Mabrey	2-Marina Mabrey Arike Ogunbowale	2-Brianna Turner
at Toledo	12/18/16	85-68	26-Brianna Turner	8-Brianna Turner	8-Lindsay Allen	4-Lindsay Allen	2-Brianna Turner Marina Mabrey
at Michigan State	12/20/16	79-61	19-Brianna Turner Marina Mabrey	11-Kathryn Westbeld	6-Lindsay Allen	1-Marina Mabrey Lindsay Allen	5-Brianna Turner
at Chattanooga	12/27/16	79-58	24-Brianna Turner	11-Lindsay Allen	12-Lindsay Allen	1-Mychal Johnson Arike Ogunbowale Marina Mabrey Lindsay Allen	6-Brianna Turner
at NC State	12/29/16	62-70	22-Marina Mabrey	6-Kathryn Westbeld	4-Marina Mabrey Lindsay Allen	3-Mychal Johnson	1-Marina Mabrey Brianna Turner
at Georgia Tech	1/2/17	55-38	18-Arike Ogunbowale	11-Brianna Turner	8-Lindsay Allen	4-Brianna Turner Lindsay Allen	6-Brianna Turner
WAKE FOREST	1/5/17	92-72	22-Arike Ogunbowale	6-Kristina Nelson Brianna Turner	5-Kristina Nelson	4-Lindsay Allen	2-Brianna Turner
at #14/14 Miami	01/08/17	67-55	15-Marina Mabrey	10-Brianna Turner	7-Lindsay Allen	4-Marina Mabrey	2-Kathryn Westbeld
PITTSBURGH	1/12/17	86-54	19-Arike Ogunbowale	8-Jackie Young	7-Lindsay Allen	3-Brianna Turner	2-Brianna Turner
at Tennessee	01/16/17	69-71	17-Marina Mabrey	7-Brianna Turner	10-Lindsay Allen	2-Lindsay Allen	3-Brianna Turner