



# WESTERN KENTUCKY UNIVERSITY LADY TOPPER BASKETBALL

Associate Director (WBB): Currie McFayden • Email: currie.mcfayden@wku.edu • Phone: 910-964-4494 (C)  
Twitter: @LadyTopperHoops | Instagram: @LadyTopperHoops | Facebook: /WKUWomensBasketball | Web: www.WKUSports.com

## 2017-18 SCHEDULE

<b>Nov. 2</b>	<b>Union (Tenn.) #</b>	<b>W, 101-58</b>
Nov. 10	(1) vs. No. 16/16 Missouri	W, 79-76
Nov. 11	(1) at Iowa	L, 104-97 (OT)
<b>Nov. 14</b>	<b>No. 6/5 Notre Dame</b>	<b>7:00 p.m.</b>
Nov. 17	at RV/RV Indiana	6:00 p.m.
Nov. 24	(2) vs. Mercer	5:00 p.m.
Nov. 26	(2) at Georgia State	1:00 p.m.
<b>Nov. 30</b>	<b>Evansville</b>	<b>7:00 p.m.</b>
Dec. 10	at Southern Illinois	2:00 p.m.
<b>Dec. 12</b>	<b>Mississippi Valley State</b>	<b>5:30 p.m.</b>
Dec. 16	(3) vs. Stetson	11:00 a.m.
Dec. 17	(3) vs. Toledo	11:00 a.m.
Dec. 21	at Ball State	6:00 p.m.
<b>Dec. 29</b>	<b>Lee University</b>	<b>5:30 p.m.</b>
<b>Jan. 4</b>	<b>NR/RV Middle Tennessee *</b>	<b>7:00 p.m.</b>
<b>Jan. 6</b>	<b>Southern Miss *</b>	<b>2:00 p.m.</b>
<b>Jan. 11</b>	<b>FIU *</b>	<b>7:00 p.m.</b>
Jan. 13	at UAB *	6:30 p.m.
<b>Jan. 18</b>	<b>UTSA *</b>	<b>11:00 a.m.</b>
Jan. 21	at Marshall *	12:00 p.m.
Jan. 26	at North Texas *	7:00 p.m.
Jan. 28	at Louisiana Tech *	2:00 p.m.
<b>Feb. 3</b>	<b>Florida Atlantic *</b>	<b>2:00 p.m.</b>
<b>Feb. 8</b>	<b>Old Dominion *</b>	<b>5:30 p.m.</b>
Feb. 10	at Rice *	2:00 p.m.
Feb. 15	at Middle Tennessee *	6:30 p.m.
<b>Feb. 17</b>	<b>Marshall *</b>	<b>2:00 p.m.</b>
<b>Feb. 23</b>	<b>Charlotte *</b>	<b>7:00 p.m.</b>
March 1	at Southern Miss *	6:00 p.m.
March 3	at UTEP *	2:00 p.m.
Mar. 7-10	(4) Conference USA Tournament	TBA
TBD	(5) NCAA First and Second Rounds	
TBD	(6) NCAA Reg. Semifinals and Finals	
TBD	(7) NCAA Final Four	

# - Exhibition

\* - Conference USA game

(1) 2017 Hawkeye Challenge (Carver-Hawkeye Arena; Iowa City, Iowa)

(2) Georgia State Thanksgiving Classic (GSU Sports Arena; Atlanta, Ga.)

(3) 2017 West Palm Invitational (West Palm Beach, Fla.)

(4) 2018 Conference USA Championships (Ford Center at The Star; Frisco, Texas)

(5) NCAA First and Second Rounds (Campus Sites – TBD)

(6) NCAA Regional Semifinals and Finals (Times Union Center; Albany, N.Y., Sprint Center; Kansas City, Mo., Rupp Arena; Lexington, Ky., Veterans Memorial Arena; Spokane, Wash.)

(7) NCAA Final Four (Nationwide Arena; Columbus, Ohio)

All times are CT. Dates and times are subject to change.



## GAME #3 - RV/NR WKU VS. #6/5 NOTRE DAME - 35TH ANNUAL BB&T CLASSIC

### WKU LADY TOPPERS

Record	1-1 (0-0 C-USA)
AP Poll	RV (27th, 24 pts.)
USA Today Coaches Poll	NR
Coach	Michelle Clark-Heard
School Record (Yrs.)	131-40 (6th Season)
Career Record (Yrs.)	155-72 (8th Season)
Clark-Heard vs. Notre Dame	0-0



November 14, 2017  
E.A. Diddle Arena  
Bowling Green, Ky.

### NOTRE DAME FIGHTING IRISH

Record	1-0 (0-0 Atlantic Coast)
AP Poll	No. 6 (629 pts.)
USA Today Coaches Poll	No. 5 (648 pts.)
Coach	Muffet McGraw
School Record (Yrs.)	766-227 (31st Season)
Career Record (Yrs.)	854-268 (36th Season)

## HOW TO FOLLOW @LADYTOPPERHOOPS

### WATCH

Fox College Sports  
WKU PBS  
Jeff Younglove (play-by-play)  
Paul Sanderford (analysis)

### LISTEN

ESPN 102.7 FM and 1450 AM in BG  
Online via C-USA TV  
Jevin Redman (play-by-play)  
John Butler (analysis)

### ONLINE

In-game updates available via Twitter at @LadyTopperHoops with complete pregame and postgame information available via www.wkusports.com

## WKU'S MOST RECENT STARTERS (AT IOWA, 11/11/17)



**TASHIA BROWN**  
#10 | Forward  
6-1 | Senior  
23.0 PPG | 4.0 RPG



**IVY BROWN**  
#23 | Forward  
6-1 | Senior  
18.5 PPG | 5.5 RPG



**WHITNEY CREECH**  
#5 | Guard  
5-8 | Sophomore  
9.0 PPG | 4.0 RPG



**RANEEM ELGEDAWY**  
#15 | Forward  
6-4 | Freshman  
5.0 PPG | 4.0 RPG



**DEE GIVENS**  
#4 | Forward  
6-1 | RS Sophomore  
18.0 PPG | 3.0 RPG

## WKU WELCOMES NO. 6/5 NOTRE DAME TO DIDDLE ARENA TUESDAY EVENING

WKU will welcome its highest-ranked foe since 2013 into E.A. Diddle Arena on Tuesday evening at 7 p.m. as No. 6/5 Notre Dame makes the trip south to take on the Lady Toppers, just the second time any Fighting Irish athletic team has made the trip to Bowling Green.

In its last time out, WKU finished as the runner-up in the 2017 Hawkeye Challenge last weekend, defeating No. 16 Missouri before falling against the host Hawkeyes. Ivy Brown and Tashia Brown each earned All-Tournament Team recognition following the event.

Tashia Brown (23 points per game) is one of three Lady Toppers averaging double figures through two games, joined by Ivy Brown (18.5), Dee Givens (18.0) and Sidnee Bopp (11.5). As a team, WKU is averaging 88 points through its first two outings.

Notre Dame earned a 121-65 win over Mount St. Mary's in its only game of the season to date. Arike Ogunbowale led the way with 21 points, while Nebraska transfer Jessica Shepard and Marina Mabrey each chipped in 18 points apiece. The Fighting Irish have reached five of the last seven Final Fours and have won both the regular season and conference tournament titles in all four of their years as a member of the ACC.

WKU will return to the road following Tuesday night's matchup, traveling to Bloomington, Ind., to battle the Hoosiers on Friday evening at 6 p.m. (CT).

## TALKING POINTS AND NOTABLE STATISTICS

► Tashia Brown was named the C-USA Player of the Week on Nov. 13 after averaging 23 points per game in WKU's two games at the Hawkeye Challenge. Brown almost single-handedly took over the game late against Missouri, scoring 11 of WKU's final 14 points to key the upset of the then-No. 16 Tigers.

► Tuesday's game doubles as the 35th Annual BB&T Classic game for the Lady Toppers. Previously a multi-team invitational prior to becoming a single game in 1992-93, WKU owns a 34-8 all-time record in BB&T Classic games inside E.A. Diddle Arena.

► Notre Dame's trip to Bowling Green is just the second time that WKU has hosted the Fighting Irish in any sport. In 1926, WKU's baseball team, at the time coached by the legendary E.A. Diddle, hosted Notre Dame and fell in a close 6-2 battle.

## GAME NOTES

### MIXING NEWCOMERS WITH VETS

WKU is set to unveil a new-look roster in 2017-18, mixing five eligible newcomers with seven returners. Ivy Brown and Tashia Brown are set to lead the roster this season, with C-USA All-Tournament pick Sidnee Bopp, Dee Givens, Whitney Creech, Malaka Frank and Kayla Smith also back for the Lady Toppers.

Newcomers Raneem Elgedawy, Terri Smith, Nichel Tampa, Sherry Porter and Elizabeth Anderson will also be seeking to make their marks during their debut seasons on The Hill.

### NEW VOICE OF THE LADY TOPPERS

Legendary WKU play-by-play announcer Barry Williams announced his retirement during the offseason after calling more than 1,000 games for the Lady Toppers.

Jevin Redman, a recent graduate of the University of Southern Indiana with an already well-decorated play-by-play career, made his regular season debut in WKU's upset of then-No. 16 Missouri.

### KEEPING THE STREAK(S) GOING

WKU has won 20 or more games in each of the last four seasons, the first time that the Lady Toppers have had such a streak since 2004-05 to 2007-08.

In addition to that stretch, the Lady Toppers have accomplished the impressive feat of winning 27 or more games in each of the last three seasons, marking the first time that that has been done in the storied history of the program.

WKU has also posted four consecutive seasons with a winning streak of 10 or more games. The Lady Toppers are one of just eight programs in the nation with a 10-game winning streak in each of the last three seasons, joining perennial title contenders such as UConn, Maryland,

Notre Dame and Baylor.

### CLARK-HEARD AT 130 WINS AND COUNTING

Michelle Clark-Heard has made an incredible impact on the Lady Toppers since taking over the program in 2012-13, amassing a 130-39 record over her first five seasons.

Clark-Heard's 130 wins over her first five seasons with the program are the most in that category of any coach in school history, surpassing the legendary Paul Sanderford's mark of 127 from 1982-83 through 1986-87.

By winning her 100th game in 2015-16, Clark-Heard also became just the 18th head coach in NCAA history to win 100 games in their first four years at the Division I level.

### WKU PICKED SECOND IN PRESEASON C-USA COACHES' POLL

After capturing the C-USA regular season and tournament titles last season, WKU has been picked second in the annual preseason coaches' poll. Despite garnering more first-place votes (eight) than Middle Tennessee, the Lady Toppers earned the runner-up spot and have been picked in the top three in each of their four C-USA campaigns.

#### 2017-18 C-USA PRESEASON COACHES POLL

1. Middle Tennessee (6)
2. WKU (8)
3. Louisiana Tech
4. Charlotte
5. Rice
6. Southern Miss
7. UAB
8. North Texas
9. Marshall
10. Old Dominion
11. UTEP
12. UTSA
13. Florida Atlantic
14. FIU

### BROWN, BROWN TABBED PRESEASON ALL-CONFERENCE BY COACHES

Seniors Tashia and Ivy Brown have been selected to the 2017-18 Preseason All-C-USA team as selected by the league's coaches.

Both were honored as All-C-USA selections following the season in 2016-17, with Ivy garnering First Team honors and Tashia picked up Second Team accolades. Tashia Brown was also chosen to the 2016-17 Preseason All-C-USA Team and earned a spot on the All-Tournament Team.

Last season, the duo combined for 26.5 points and 12.3 rebounds per game, serving as two of WKU's "Big Three" alongside Kendall Noble. In 2017-18, the Browns appear poised to become one of the top one-two punches among all C-USA players.

### 2017-18 C-USA PRESEASON ALL-CONFERENCE TEAM

Alex Johnson, Middle Tennessee (Player of the Year)
Tashia Brown, WKU
Ivy Brown, WKU
Nyilah Jamison-Myers, Charlotte
Kierra Anthony, Louisiana Tech
Shayna Gore, Marshall
Terriell Bradley, North Texas
Rachael Childress, UAB

### FOURTH YEAR IN CONFERENCE USA

Over its first three seasons as a member of Conference USA, WKU has established itself as a formidable opponent against the league's 13 other teams. The Lady Toppers own a 47-7 mark against the rest of the league since joining and posted a 16-2 record last season.

### WKU'S ALL-TIME SERIES WITH 2017-18 CONFERENCE USA ALIGNMENT

Opponent	All-Time Series	Last Meeting
Charlotte	WKU leads 16-5	Won 75-74 on Feb. 23, 2017
FIU	WKU leads 28-9	Won 90-38 on Jan. 1, 2017
Florida Atlantic	WKU leads 16-2	Won 76-55 on Dec. 30, 2016
Louisiana Tech	LA Tech leads 26-18	Won 77-53 on March 10, 2017
Marshall	WKU leads 8-1	Won 78-64 on Feb. 11, 2017

## 2017-18 @LADYTOPPERHOOPS ROSTER

No.	Name	Height	Cl.-Exp.	Pos.	Hometown (Previous School)
1	Arame Niang	6-3	So.-TR	F	Rufisque, Senegal (Kansai Gaidai University)
3	Sidnee Bopp	5-6	Jr.-2L	G	Marmaduke, Ark. (Marmaduke HS)
4	Dee Givens	6-1	R-So.-1L	F	Lexington, Ky. (Lafayette HS)
5	Whitney Creech	5-8	So.-1L	G	Jenkins, Ky. (Jenkins HS)
10	Tashia Brown	6-1	Sr.-3L	F	Lake Park, Ga. (Lowndes HS)
11	Alexis Brewer	5-9	Jr.-TR	G	Buffalo, Ky. (West Virginia University)
12	Nichel Tampa	5-5	Fr.-HS	G	Alpharetta, Ga. (St. Francis HS)
13	Malaka Frank	5-10	So.-1L	G	Frankfort, Ky. (Franklin County HS)
15	Raneem Elgedawy	6-4	Fr.-HS	F	Alexandria, Egypt
20	Terri Smith	5-7	Fr.-HS	G	Harvest, Ala. (Sparkman HS)
22	Sherry Porter	5-7	Fr.-HS	G	Baton Rouge, La. (Madison Prep Academy)
23	Ivy Brown	6-1	Fr.-3L	F	Hodgenville, Ky. (LaRue County HS)
30	Elizabeth Anderson	6-1	Fr.-HS	F	Louisville, Ky. (Mercy Academy)
32	Kayla Smith	5-11	Jr.-2L	G/F	Fayetteville, Ga. (Fayette County HS)

#### Head Coach: Michelle Clark-Heard (WKU, 1990), Sixth Season

Associate Head Coach: Greg Collins (Louisville, 1988), Sixth Season

Assistant Coach: Melissa Kolbe (Wittenberg, 1999), Third Season

Assistant Coach: Brittany Parker (Saint Augustine's, 2009), Second Season

Director of Operations: Ervin Williams (Lenoir-Rhyne College, 1987), Fifth Season

Graduate Assistant: Jhasmin Bowen (Arkansas, 2015), Second Season

Player	Pronunciation
#1 Arame Niang	uh-ROM NYANG
#3 Sidnee Bopp	like "sydney"
#10 Tashia Brown	TAY-zhuh
#12 Nichel Tampa	like "Michelle" with an N
#13 Malaka Frank	muh-LAKE-uh
#15 Raneem Elgedawy	rah-NEEM el-juh-DAY-wee
AC Melissa Kolbe	like "colby"



## GAME NOTES

Middle Tennessee	MT leads 41-29	Won 82-75 on Feb. 16, 2017
North Texas	WKU leads 17-6	Won 78-51 on March 9, 2017
Old Dominion	WKU leads 14-8	Won 79-73 on Feb. 25, 2017
Rice	WKU leads 3-0	Won 80-75 on March 4, 2017
Southern Miss	WKU leads 4-2	Won 67-56 on March 11, 2017
UAB	WKU leads 17-4	Won 62-52 on Feb. 18, 2017
UTEP	Series tied 2-2	Won 71-54 on Jan. 26, 2017
UTSA	UTSA leads 2-1	Lost 80-77 on Jan. 28, 2017

## LADY TOPPERS VS. RANKED TEAMS UNDER CLARK-HEARD

WKU enters Tuesday's game against No. 6/5 Notre Dame with a 3-6 record against AP-ranked teams under Michelle Clark-Heard, with one win over a ranked team in each of the three most recent seasons.

### RANKED GAMES UNDER CLARK-HEARD

Date	Opponent	Result
Nov. 27, 2013	#4 Louisville	L, 61-74
March 22, 2014	at #5 Baylor	L, 74-87
Nov. 25, 2014	at #12 Louisville	L, 67-89
Nov. 21, 2015	#16 Louisville	W, 71-69
Nov. 19, 2016	#23 Indiana	W, 85-74
Nov. 25, 2016	vs. #18 DePaul	L, 69-77
Dec. 11, 2016	at #8 Louisville	L, 61-68
March 17, 2017	vs. #11 Ohio State	L, 63-70
Nov. 10, 2017	vs. #16 Missouri	W, 79-76
Nov. 14, 2017	#6 Notre Dame	N/A

## THAT 80S SHOW

WKU broke the 80-point barrier nine times in 2016-17 and has scored 80 or more points on at least seven occasions per season since Michelle Clark-Heard assumed control of the program in 2012-13.

By winning eight of its nine contests in which it hit 80 points last season, WKU also extended an impressive streak under Clark-Heard. The Lady Toppers have posted a near-perfect 48-2 mark when scoring 80 or more since the 2012-13 season.

## DEFENDING DIDDLE

WKU put together 14-1 record inside Diddle Arena last season and has posted a 63-11 record inside the friendly confines of its home arena since Michelle Clark-Heard took over the program in 2012-13.

The Lady Toppers currently sport a 13-game winning streak inside Diddle Arena dating back to their 85-74 win over then-No. 23 Indiana on Nov. 19 last season.

## TOUGH UNDER PRESSURE

Since Michelle Clark-Heard took over the program, the Lady Toppers have played 27 contests that have been decided by three or fewer points. In such games, WKU has posted a 19-8 record overall.

In the same vein, the Lady Toppers have been very tough closers down the stretch as well, recording a 120-12 record when leading or tied with five minutes remaining in games since 2012-13.

## ONE OF A KIND

Preseason All-C-USA pick Ivy Brown returns as one of the top post players in the conference after averaging 13.1 points and 8.2 rebounds per game with

## JOINING THE 1,000-POINT CLUB

Seniors Tashia and Ivy Brown are poised to be two of the top C-USA players in 2017-18. Tashia has already entered WKU's 1,000-point club and ranks 21st in school history in scoring, while Ivy sits just 13 points shy of becoming the 39th member of the club.



**TASHIA BROWN**  
#10 | Forward  
6-1 | Senior

**1,377**  
CAREER POINTS



**IVY BROWN**  
#23 | Forward  
6-1 | Senior

**987**  
CAREER POINTS

eight double-doubles last season.

Among all returning C-USA players, Brown is the lone individual who ranked in the top 15 in the league in both scoring (15th) and rebounding (fourth) last season.

## MOVING UP THE CHARTS

Already 19th in program history with 1,377 career points, Tashia Brown is looking to move even further up the charts during her senior season.

To move into the top 10 in school history, Brown would need to score 386 more points during her final season on The Hill; as a sophomore, the Lake Park, Ga., native totaled 579 points before adding 456 more last season.

## BOPP IT

The breakout star of the 2017 C-USA Tournament, junior Sidnee Bopp has continued her momentum into the 2017-18 season, knocking down six three-pointers across WKU's first two games of the season.

Dating back to the final five games of 2016-17, Bopp has connected on 27 three-pointers over her last seven games, just shy of four makes from beyond the arc per contest.





## STRONG AFTER LOSSES

In games immediately following a loss since Michelle Clark-Heard took over in 2012-13, the Lady Toppers are 32-6 and have not suffered consecutive losses since Nov. 23 and 25, 2014 (at Mississippi State and Louisville).

## WKU LEADING THE WAY AS ELITE WOMEN'S BASKETBALL PROGRAM IN THE REGION

Western Kentucky University has separated itself as the premier women's basketball program in the region. Among four area powers, WKU leads in all-time wins, Sweet 16 appearances, Final Four appearances and all-time postseason wins.

### ENTERING 2017-18 SEASON

				
<b>2016-17 Record</b>	<b>27-7</b>	<b>29-8</b>	<b>22-11</b>	<b>23-11</b>
Sweet 16 Appearances	6	6	6	0
Elite Eight Appearances	3	3	4	0
Final Four Appearances	3	2	0	0
National Title Game Apps.	1	2	0	0
All-Time Wins	<b>960</b>	807	785	864
NCAA Appearances	<b>19</b>	20	15	18
WNIT Appearances	<b>11</b>	3	7	5
20-Win Seasons	<b>30</b>	18	17	24
30-Win Seasons	<b>2</b>	2	1	1
NCAA Tournament Record	<b>17-19</b>	27-20	20-14	5-18
WNIT Record	<b>16-13</b>	1-4	13-5	6-5
Overall NCAA/WNIT Record	<b>33-32</b>	28-24	33-19	11-23
Top 25 Finish (AP)	<b>9</b>	7	10	1



## GAME NOTES

### FAST STARTS FOR FRESHMEN

WKU has started a true freshman at least one time in each of the last four seasons. Tashia Brown earned five starts in 2014-15, Kayla Smith drew 31 starts in 2015-16, Sarah Price appeared in the starting lineup five times in 2016-17 and Raneem Elgedawy has started WKU's first two games this season.

### TOPS ON TOP OF RANKED TEAMS

For the third consecutive year, WKU earned a victory over an AP-ranked opponent by taking down No. 16 Missouri, 79-76, on Nov. 10 in the Hawkeye Challenge.

With the victory, WKU secured its first streak of three seasons with at least one ranked victory since 1990-91 through 1992-93, a span that saw the Lady Toppers reach three NCAA Tournaments and make a Final Four appearance.

### EXPLOSIVE OFFENSE

WKU owns C-USA's top-scoring offense through the first weekend of play, averaging 88 points per game through its first two outings, nearly 10 points more than Rice's 78.5 points per game.

WKU's 88 points per game ranks 11th in the nation among schools that have already played multiple games and is the top scoring offense among teams in the state of Kentucky.

### LOOKING AHEAD

Following Tuesday night's battle against Notre Dame, the Lady Toppers will return to action on Friday at 6 p.m. (CT) as they head north to battle Indiana inside Assembly Hall in Bloomington, Ind.

Friday's trip will be the return game of a home-and-home series with the Hoosiers. Last season, WKU picked up an 85-74 victory over Indiana inside Diddle Arena. The Lady Toppers were led by 28 points from Tashia Brown, whose performance earned her C-USA Player of the Week honors and a spot on the NCAA Weekly Starting Five.

## 2017-18 HONORS

### TASHIA BROWN

2017-18 C-USA Preseason All-Conference Selection  
2017 Hawkeye Challenge All-Tournament Team  
C-USA Player of the Week (Nov. 13, 2017)  
College Sports Madness High-Major Player of the Week (Nov. 13, 2017)  
College Sports Madness C-USA Player of the Week (Nov. 13, 2017)

### IVY BROWN

2017-18 C-USA Preseason All-Conference Selection  
2017 Hawkeye Challenge All-Tournament Team

## WKU'S RECORD WHEN...

	14-15	15-16	16-17	17-18	MCH Era
Home games	14-1	14-1	14-1	0-0	63-11
Road games	12-3	12-5	9-3	0-1	51-23
Neutral site games	4-1	1-1	4-3	1-0	17-6
Conference games (reg.)	16-2	15-3	16-2	0-0	73-19
Conference games (all)	19-2	15-4	19-2	0-0	83-21
vs. Top 25 AP Poll Teams	0-1	1-0	1-3	1-0	3-6
vs. Top 25 Coaches Poll Teams	0-1	1-0	0-3	1-0	2-6
as Top 25 AP Poll Team	3-1	0-0	0-0	0-0	3-1
Postseason	3-1	3-2	3-1	0-0	14-7
Overtime games	2-0	2-0	1-1	0-1	6-3
Televised games	11-3	9-5	11-2	1-0	44-19
Lead at halftime	28-3	19-3	24-3	1-1	108-14
Tied at halftime	0-1	1-1	0-0	0-0	4-4
Trail at halftime	2-1	7-3	3-4	0-0	19-22
Lead with 5:00 remaining	28-3	24-0	26-2	1-1	119-11
Tied with 5:00 remaining	0-0	0-0	0-1	0-0	1-1
Trail with 5:00 remaining	2-2	3-7	1-4	0-0	11-28
Shoot better from the field	22-1	16-2	14-1	0-0	87-7
Shoot worse from the field	8-4	11-5	13-6	1-1	43-32
Shoot same from the field	0-0	0-0	0-0	0-0	1-1
Shoot 50 percent or better	9-0	3-1	4-0	0-0	24-1
Shoot 40-49.9 percent	15-3	18-2	18-3	1-1	78-16
Shoot under 40 percent	6-2	6-4	5-4	0-0	28-23
Opp. shoots 50 percent or better	1-2	2-1	5-1	0-1	11-10
Opp. shoots 40-49.9 percent	8-2	13-4	15-5	1-0	52-25
Opp. shoots under 40 percent	21-1	12-2	7-1	0-0	68-5
Make 6 or fewer 3-pointers	25-3	19-5	10-3	0-0	88-26
Make 7 or more 3-pointers	5-2	8-2	17-4	1-1	43-14
Shoot more FTs than opponent	21-3	22-1	23-3	1-0	99-11
Outrebound opponent	15-1	16-3	16-3	0-0	73-14
Opponent outrebounds WKU	14-4	10-4	9-4	1-1	53-26
Same number of rebounds	1-0	1-0	2-0	0-0	5-0
Commit fewer turnovers	25-2	24-4	26-3	1-1	108-20
Commit the same or more TOs	5-3	3-3	1-4	0-0	23-20
Commit 12 or fewer turnovers	10-1	15-4	20-3	0-1	63-12
When scoring first	20-2	12-5	18-3	1-0	70-19
When the opponent scores first	10-3	15-2	9-4	0-1	61-21
1-3 point games	5-3	5-1	1-2	1-0	19-8
6-10 point games	7-0	5-4	6-3	0-1	26-18
11-15 point games	4-1	7-2	6-0	0-0	27-6
16-20 point games	3-0	5-0	4-1	0-0	19-5
21-plus point games	10-1	3-0	8-0	0-0	31-3
When scoring 100 points or more	0-0	0-0	0-0	0-0	0-0
When scoring 90-99 points	5-0	0-0	3-0	0-1	13-1
When scoring 80-89 points	9-0	8-0	6-1	0-0	35-1
When scoring 70-79 points	8-1	8-3	11-1	1-0	39-9
When scoring 60-69 points	7-4	9-2	7-4	0-0	38-18
When scoring 59 or fewer points	1-0	2-2	0-1	0-0	6-11
When allowing 100 points or more	0-0	0-0	0-0	0-1	0-1
When allowing 90-99 points	0-0	0-0	0-0	0-0	0-0
When allowing 80-89 points	0-2	0-3	0-2	0-0	3-12
When allowing 70-79 points	5-0	4-1	7-3	1-0	23-14
When allowing 60-69 points	11-3	9-2	5-2	0-0	44-10
When allowing 59 or fewer points	14-0	14-1	15-0	0-0	61-3
November	5-2	3-1	4-3	1-1	22-10
December	6-0	6-1	5-1	0-0	28-4
January	7-2	8-1	6-2	0-0	32-10
February	7-0	5-2	7-0	0-0	27-8
March	5-1	5-2	5-1	0-0	23-8
Before Jan. 1	11-2	9-2	9-4	1-1	50-14
Monday	3-0	2-0	0-0	0-0	6-1
Tuesday	1-1	2-0	0-0	0-0	4-2
Wednesday	0-0	2-1	2-1	0-0	17-7
Thursday	11-0	9-2	8-1	0-0	33-3
Friday	3-1	2-0	3-2	1-0	13-3
Saturday	9-2	8-3	11-1	0-1	46-16
Sunday	3-1	2-1	3-2	0-0	12-8
Red uniforms	8-2	11-3	7-5	0-1	46-23
Black uniforms	5-2	0-1	3-0	0-0	8-3
White uniforms	15-1	14-2	16-2	1-0	66-10
Gray uniforms	1-0	1-1	0-0	0-0	8-2
Play 4Kay (Pink) uniforms	1-0	1-0	1-0	0-0	3-2

## BOWLING GREEN, KENTUCKY: ONE OF THE NATION'S TOUGHEST PLACES TO PLAY

Bowling Green, Ky. is one of the toughest places in the nation to play, in a study released by the University of Utah Athletic Media Relations office. WKU is one of just 11 programs with a winning percentage over 80.0% in its home city.

### ENTERING THE 2017-18 SEASON

Cities (Program)	Conference	Record	Percentage
1. Knoxville, Tenn. (Tennessee)	SEC	558-54	91.18%
2. Ruston, La. (Louisiana Tech)	C-USA	519-69	88.27%
3. Missoula, Mont. (Montana)	Big Sky	513-75	87.24%
4. Palo Alto, Calif. (Stanford)	Pac-12	505-89	85.02%
5. Salt Lake City, Utah (Utah)	Pac-12	468-92	83.57%
6. Austin, Texas (Texas)	Big 12	525-109	82.81%
7. Grand Forks, N.D. (North Dakota)	Big Sky	469-98	82.72%
8. South Bend, Ind. (Notre Dame)	ACC	427-92	82.27%
9. Chapel Hill, N.C. (North Carolina)	ACC	516-115	81.77%
10. Bowling Green, Ky. (WKU)	C-USA	481-110	81.39%
11. State College, Pa. (Penn State)	Big 10	423-101	80.73%

## GAME NOTES



# HC

**MICHELLE CLARK-HEARD**  
Sixth Season

**“What Michelle Clark-Heard has done is instilled pride back in Western Kentucky... Now with Michelle Clark-Heard, with the passion and pride she has, because she was a player at Western Kentucky, she is bringing that back to Bowling Green.”**

-ESPN Analyst Carolyn Peck

Michelle Clark-Heard has quickly shaped the Western Kentucky University Lady Topper Basketball program back into a national name, putting the Lady Toppers back on the national map. In just three seasons at WKU as head coach, Clark-Heard has reached two NCAA Tournaments, won two conference tournament championships and a regular season conference title while posting 76 wins, the most in a coaches first three seasons in WKU women's basketball or men's basketball history.

Clark-Heard's third season directing her alma mater in 2014-15 was one of the best the storied program has seen. She led the Lady Toppers to a 30-5 record, posting a Conference USA record 30 wins in the program's first season as a league member.

The season began with the Lady Toppers making huge waves early by reaching the finals of the Preseason Women's NIT with wins at Colorado and over eventual American East Conference champion Albany before a loss on the road at Mississippi State. WKU also posted non-conference wins over Hofstra, Tulane and Ole Miss.

The Lady Toppers made an immediate impact in Conference USA, posting a 16-2 record to tie the league mark for league wins in a season, including eight wins on the road, to secure the program's first regular season league title as a Conference USA member and 11th in program history. In early January, she led the Lady Toppers to the Associated Press Top 25 Rankings for the first time since the 1997-98 season. She also became just the 10th coach in NCAA history to lead their alma mater into the Associated Press Top 25 rankings as both a player and coach when the Lady Toppers were ranked for two weeks in January 2015.

The Lady Toppers then won three games in three days by a combined eight points to secure a tournament title at the Conference USA Championships in Birmingham, Ala.

Following the season, Clark-Heard was recognized for her outstanding accomplishments, earning Conference USA Coach of the Year and 2015 United States Marine Corps/WBCA NCAA Division I Regional Coach of the Year honors. Her selection as a WBCA Regional Coach of the Year also made her a finalist for the Pat Summitt Trophy, awarded annually to the 2015 United States Marine Corps/WBCA NCAA Division I National Coach of the Year.

Her success at WKU has also helped her land new opportunities in the USA Basketball ranks. Clark-Heard was named an assistant coach for the 2015 U.S. Pan American Women's Basketball Team, joining head coach Lisa Bluder of the University of Iowa and fellow assistant coach Scott Rueck of Oregon State University on the 2015 staff.

In Toronto, Clark-Heard helped lead the United States to a silver medal in her international assistant coaching debut, falling just short in the gold medal game against the host Canadians.

In 2013-14, Clark-Heard helped WKU win its final seven regular season games before reeling off three straight in New Orleans, La. in March 2014 to win the Sun Belt Conference Championships with a 61-60 win over Arkansas State after WKU faced a 14-point deficit in the second half. The season

also saw WKU defeat Georgetown in the Puerto Rico Classic after facing a 16-point deficit in the second half.

The season was capped by a 87-74 loss to fifth-ranked Baylor in Waco, Texas in the opening round of the 2014 NCAA Tournament, ending the longest NCAA Tournament appearance drought in program history.

The run to the tournament helped WKU secure a 24-9 record and finish with 20-wins for the second straight season. Her consecutive 20-win seasons to begin her time at WKU marked the first time in Sun Belt Conference history that a team had won 20 games in back-to-back years following a season in which it had won less than 10 games.

Her success in 2013-14 followed a massive improvement on the floor in 2012-13.

In her first year as a Division One coach in 2012-13, Clark-Heard helped WKU to a 13-win improvement over the 2011-12 season output. It was the largest in Sun Belt Conference history as WKU turned a 9-21 mark into a 22-11 record. WKU's eight win improvement in conference play from five wins to 13 wins was tied for the largest in league history. The Lady Toppers also became the first team in Sun Belt Conference history to win 20 games in the season following a year in which the team won less than 10 games earlier this season.

Her first season at WKU also showcased her ability to develop players. The duo of Chastity Gooch and Alexis Govan averaged a combined 12.7 ppg in 2011-12 but posted 36.5 per outing in 2012-13. The duo combined for 1,203 points after posting 381 last season. The team also saw major improvement in nearly all statistical categories, including improving free throw shooting by over 11 percent to .739, the third highest mark in school history.

Clark-Heard spent five years as an assistant coach to Jeff Walz at Louisville. During her time with the program, the Cardinals made three Sweet 16 appearances and made their first Final Four appearance, finishing as the National Runner-Up in 2009. A roster she helped build also reached the Final Four in 2013 after beating No. 1 Baylor and national power Tennessee in the regional semifinals and finals. Clark-Heard was instrumental in bringing in the No. 12 recruiting class in 2008, then followed with three consecutive Top 10 classes in 2009, 2010 and 2011. The 2010 recruiting class was the highest ranked class in school history, ranked fifth in the nation.

Among the most notable players Clark-Heard coached at Louisville was overall number one pick in the 2009 WNBA Draft, Angel McCoughtry and overall number eight pick in the 2013 WNBA Draft, Shoni Shimmel. Overall, she coached five players at Louisville that went on to be drafted in the WNBA Draft.

Prior to her time at Louisville, Clark-Heard spent two seasons as the head coach at Kentucky State, taking the reigns of the program in June 2005. She took over a program that had won just one game during the 2004-05 season. In her first season she led the Thorobrettes to a 5-23 record, four of the wins were against Southern Intercollegiate Athletic Conference opponents. Her team was picked to finish 11th

in the SIAC but ended the season in ninth place. In her second season at KSU, she guided the Thorobrettes to an impressive 19-9 record, finishing tied for fourth place in the SIAC. Clark-Heard earned SIAC Coach-of-the-Year honors after the impressive turnaround. Her 2006-07 Thorobrettes were the second most improved team in NCAA Division II women's basketball during the 2006-07 season.

Before being named head coach at Kentucky State, Clark-Heard spent three seasons at Cincinnati as an assistant and four years at Nebraska in the same role. The Bearcats advanced to postseason play in two of her three seasons there while she helped Nebraska reach the NCAA Tournament twice during her time with the team. She was also responsible for helping sign McDonald's All-American Janice Bright for the Cornhuskers in 2001 while coaching alongside current Louisville coach Jeff Walz and under former WKU coach Paul Sanderford.

A four-year letterwinner on the Hill (1987-90), Clark-Heard was part of four NCAA Tournament teams during her Lady Topper career. She also helped guide the Lady Toppers to a pair of Sun Belt Conference Tournament championships (1988 and 1989) and two conference regular-season titles (1989 and 1990). She played in 118 games during her four years in the Hill, scoring 790 points and pulling down 615 rebounds. WKU amassed 89 victories during her four years in uniform, winning 70 percent of the games over that span and putting together three 20-win seasons.

Upon graduation from WKU, she spent eight years working within a recreational setting, five in Bowling Green and three with the Louisville Metro Parks Department. While in Louisville, she also served as head junior varsity coach and assistant varsity coach at DuPont Manual High School for the 1994-95 seasons and played professionally with the Kentucky Marauders of the Women's Basketball Association in 1994-95.

The Louisville native earned Kentucky High School State Player of the Year honors in 1986 while playing at Atherton High School and was inducted into the Atherton Hall of Fame in 2003.

She was married on August 16, 2003 to Luther Heard.

## CLARK-HEARD BY THE NUMBERS

Overall Head Coaching Record	155-72
WKU Head Coaching Record	131-40
Head Coaching Record Over Last Three Years	55-15
Final Four Appearances (2009)	1
Overall Wins as WKU Coach and Player	220
Overall Record as WKU Coach and Player	220-77
Conference Regular Season Record	73-19
Tournament Titles as Head Coach	3
Tournament Record as Head Coach	10-3
Overall Postseason Record as Head Coach	15-7
NCAA Tournament Appearances as AC or HC	10
Conference Coach of the Year Selections	2



# AHC

**GREG COLLINS**  
Sixth Season

Promoted to associate head coach during the summer of 2014... Previously coached with New York Liberty (advance scout, 06-07), Louisville (2002-03 to 2006-07) and Arkansas (2007-08 to 2011-12)... Coaching helped produce three Kentucky Miss Basketball winners during time with Derek Smith All-Stars (2000-03)... Native of Louisville, Ky... Avid fisherman who rarely passes up opportunity to get up early and go fishing for an hour while on the road for a game or out recruiting... Welcomed daughter, Emma Claire, to family during the spring of 2014, the second child for Collins and his wife, Rae.



# AC

**MELISSA KOLBE**  
Third Season

Brings 14 years of experience at the Division I level as an assistant coach to the Hill, after serving in 2014-15 as an assistant coach and recruiting coordinator at Mount St. Mary's... Also has six years of experience working in Conference USA as an assistant coach at East Carolina (2002-08)... Has also worked at Valdosta State (1999-01), Mercer (2001-02) and Eastern Kentucky (2008-14)... Led Wittenberg to three conference championships and two NCAA Tournament trips as a player... Appeared in 105 games, starting 55, including all 28 as a junior, and 26-of-27 as a senior. She scored 753 career points, averaging a career best 9.5 points per contest as a senior.



# AC

**BRITTANY PARKER**  
Second Season

Four-year letterwinner at Saint Augustine's... Helped lead Morehead State's powerful offense as the Eagles ranked 10th in the nation in scoring during the 2015-16 campaign at 79.4 points per game... The Eagles also ranked in the top 10 nationally in blocks per game (6.3, fifth), rebounds per game (45.23, fifth) and offensive rebounds per game (16.8, ninth) in 2015-16... At Niagara, Parker assisted in coaching Victoria Rampado, the 2013-14 MAAC Freshman of the Year... Also assisted in coaching 2009-10 CIAA Defensive Player of the Year Deja Middleton... Joins WKU after stints at Fayetteville State (2009-11), Niagara (2011-14) and Morehead State (2014-16).



# GA

**JHASMIN BOWEN**  
Second Season

Joins the Lady Topper Basketball staff one year removed from a four-year playing career at Arkansas... As a freshman, Bowen was coached by current WKU associate head coach Greg Collins... Scored in double figures in 15 games as a senior in 2014-15, including a career-best 21 points in a win on the road at Alabama... Picked up a double-double on the road in SEC play with 11 points and 10 rebounds at Missouri... Named MVP of the New Mexico Thanksgiving Tournament as a junior in 2013-14 after scoring 20 points against Southeast Missouri State.

**WKU INDIVIDUAL**

**SCORING**

Scored 25 Points - Ivy Brown at Iowa; Nov. 11, 2017 (31)  
 Scored 30 Points - Ivy Brown at Iowa; Nov. 11, 2017 (31)  
 Scored 35 Points - Alexis Govan vs. North Texas; Dec. 29, 2012 (40)  
 Scored 40 Points - Alexis Govan vs. North Texas; Dec. 29, 2012 (40)  
 Scored double figures in 40 straight games - Alexis Govan; Feb. 26, 2012 through Dec. 21, 2013 (47)  
 Scored 15 Points in a Quarter - Kendall Noble (16 in 3rd) at UTSA; Jan. 28, 2017  
 Scored 20 Points in a Half - Kendall Noble (21 in 2nd) at UAB; Feb. 18, 2017  
 Three Players Had 20 Points - Kendall Noble (20), Alexis Govan (22), Micah Jones (20) vs. Ole Miss; Dec. 4, 2014  
 A Player Had 20 Points or More in Six Straight Games - Crystal Kelly (27 vs. Evansville, Nov. 16, 2007; 33 vs. Louisiana Tech, Nov. 20, 2007; 27 vs. Southern Illinois, Nov. 23, 2007; 30 at George Washington, Nov. 24, 2007; 25 vs. Morehead State, Nov. 27, 2007; 27 at Kentucky, Nov. 30, 2007)  
 A Player Had 20 Points or More in Nine Straight Games - Crystal Kelly (29 vs. Penn State, Nov. 25, 2006; 28 at Morehead State, Nov. 29, 2006; 28 at Florida Atlantic, Dec. 2, 2006; 20 at Louisville, Dec. 9, 2006; 24 vs. South Alabama, Dec. 17, 2006; 20 at Middle Tennessee, Dec. 27, 2006; 22 vs. IUPUI, Jan. 2, 2007; 27 vs. Troy, Jan. 4, 2007; 26 vs. South Dakota State, Jan. 7, 2007)  
 Six Players Scored in Double Figures - Kendall Noble (15), Dee Givens (13), Ivy Brown (12), Tashia Brown (12), Whitney Creech (12) and Kayla Smith (11) vs. Lipscomb, Dec. 15, 2016  
 Seven Players Scored in Double Figures - ShaRae Mansfield (15), Danielle McCulley (13), Natalie Powers (12), Leslie Logsdon (11), Jamie Britt (10), Shea Lunsford (10), Laurie Townsend (10) vs. Lamar in Ruston, La., March 5, 1998

**DOUBLE-DOUBLES**

20-10 Game - Kendall Noble (22 points and 10 rebounds) at Rice; March 4, 2017  
 30-10 Game - Chastity Gooch (30 points and 11 rebounds) vs. Colorado; Nov. 17, 2014  
 20-10 Game by Two Players in same game - Alexis Govan (25 points, 11 rebounds) and Chastity Gooch (26 points, 12 rebounds) vs. East Carolina; March 21, 2013  
 Double-Double in Points and Assists - Kendall Noble at Marshall; Feb. 11, 2017 (18 points, 10 assists)  
 Double-Double in Points and Blocks - None in school history  
 Double-Double in Points and Steals - None in school history  
 Triple-Double - Kendall Noble vs. Marshall; March 10, 2016 (17 points, 11 rebounds, 10 assists)  
 Two players record double-doubles - Kendall Noble (19 points and 10 rebounds) and Chastity Gooch (20 points and 14 rebounds) vs. Mississippi State; Nov. 23, 2014  
 Double-double in five consecutive games - Chastity Gooch (vs. Morehead State on Dec. 6, 2012; vs. Kent State on Dec. 9, 2012; vs. SEMO on Dec. 16, 2012; vs. Wright State on Dec. 19, 2012; vs. Florida A&M on Dec. 21, 2012; vs. North Texas on Dec. 29, 2012; vs. UALR on Jan. 3, 2013; vs. Arkansas State on Jan. 6, 2013; vs. Florida Atlantic on Jan. 12, 2013) (9)  
 Double-double in six consecutive games - Chastity Gooch (vs. Morehead State on Dec. 6, 2012; vs. Kent State on Dec. 9, 2012; vs. SEMO on Dec. 16, 2012; vs. Wright State on Dec. 19, 2012; vs. Florida A&M on Dec. 21, 2012; vs. North Texas on Dec. 29, 2012; vs. UALR on Jan. 3, 2013; vs. Arkansas State on Jan. 6, 2013; vs. Florida Atlantic on Jan. 12, 2013) (9)  
 Double-double in seven consecutive games - Chastity Gooch (vs. Morehead State on Dec. 6, 2012; vs. Kent State on Dec. 9, 2012; vs. SEMO on Dec. 16, 2012; vs. Wright State on Dec. 19, 2012; vs. Florida A&M on Dec. 21, 2012; vs. North Texas on Dec. 29, 2012; vs. UALR on Jan. 3, 2013; vs. Arkansas State on Jan. 6, 2013; vs. Florida Atlantic on Jan. 12, 2013) (9)  
 Double-double in eight consecutive games - Chastity Gooch (vs. Morehead State on Dec. 6, 2012; vs. Kent State on Dec. 9, 2012; vs. SEMO on Dec. 16, 2012; vs. Wright State on Dec. 19, 2012; vs. Florida A&M on Dec. 21, 2012; vs. North Texas on Dec. 29, 2012; vs. UALR on Jan. 3, 2013; vs. Arkansas State on Jan. 6, 2013; vs. Florida Atlantic on Jan. 12, 2013) (9)  
 Double-double in nine consecutive games - Chastity Gooch (vs. Morehead State on Dec. 6, 2012; vs. Kent State on Dec. 9, 2012; vs. SEMO on Dec. 16, 2012; vs. Wright State on Dec. 19, 2012; vs. Florida A&M on Dec. 21, 2012; vs. North Texas on Dec. 29, 2012; vs. UALR on Jan. 3, 2013; vs. Arkansas State on Jan. 6, 2013; vs. Florida Atlantic on Jan. 12, 2013) (9)

**FIELD GOALS**

Made 10 FG in a game - Ivy Brown at Iowa; Nov. 11, 2017 (12)  
 Made 15 FG in a game - Alexis Govan vs. North Texas; Dec. 29, 2012 (19)  
 Made 16 FG in a game - Alexis Govan vs. North Texas; Dec. 29, 2012 (19)  
 Made 17 FG in a game - Alexis Govan vs. North Texas; Dec. 29, 2012 (19)  
 Made 18 FG in a game - Alexis Govan vs. North Texas; Dec. 29, 2012 (19)  
 Made 19 FG in a game - Alexis Govan vs. North Texas; Dec. 29, 2012 (19)  
 Attempted 19 FG in a game - Tashia Brown at Iowa; Nov. 11, 2017 (19)  
 Attempted 20 FG in a game - Tashia Brown vs. Missouri; Nov. 10, 2017 (20)  
 Attempted 25 FG in a game - Alexis Govan vs. Florida Atlantic; Feb. 13, 2013 (25)  
 Attempted 30 FG in a game - Brenda Chapman vs. Murray State; Jan. 21, 1978 (31)

**THREE-POINTERS**

Made 5 3-pointers in a game - Ivy Brown at Iowa; Nov. 11, 2017 (6)  
 Made 6 3-pointers in a game - Ivy Brown at Iowa; Nov. 11, 2017 (6)  
 Made 7 3-pointers in a game - Janae Howard vs. Troy; Jan. 22, 2011 (7)  
 Made 8 3-pointers in a game - Leslie Logsdon vs. MTSU; March 11, 2003  
 Attempted 12 3-pointers in a game - Bianca McGee vs. Georgetown; Dec. 21, 2013 (12)  
 Attempted 13 3-pointers in a game - Bianca McGee vs. Ball State; Dec. 7, 2013 (13)

Attempted 14 3-pointers in a game - Janae Howard vs. Troy; Jan. 22, 2011 (14)  
 Attempted 15 3-pointers in a game - Kenzie Rich vs. George Washington; Dec. 28, 2009 (15)  
 Attempted 16 3-pointers in a game - Kenzie Rich vs. Denver; Feb. 2, 2008 (16)

**FREE THROWS**

Made 10 FT in a game - Tashia Brown at Iowa; Nov. 11, 2017 (10)  
 Made 13 FT in a game - Kendall Noble vs. Dayton; March 17, 2016 (17)  
 Made 14 FT in a game - Kendall Noble vs. Dayton; March 17, 2016 (17)  
 Made 15 FT in a game - Kendall Noble vs. Dayton; March 17, 2016 (17)  
 Made 16 FT in a game - Kendall Noble vs. Dayton; March 17, 2016 (17)  
 Made 17 FT in a game - Kendall Noble vs. Dayton; March 17, 2016 (17)  
 Made 18 FT in a game - Crystal Kelly vs. Denver; Feb. 2, 2008 (18)  
 Made 19 FT in a game - Beth Blanton vs. Murray State; March 2, 1978 (19)  
 Attempted 15 FT in a game - Kendall Noble vs. Dayton; March 17, 2016 (18)  
 Attempted 20 FT in a game - Crystal Kelly vs. Denver; Feb. 2, 2008 (20)  
 Attempted 23 FT in a game - Beth Blanton vs. Murray State; March 2, 1978 (23)

**REBOUNDS**

15 Rebounds - Ivy Brown vs. College of Charleston; Dec. 18, 2016 (17)  
 20 Rebounds - Arnika Brown vs. South Alabama; Feb. 17, 2010 (25)  
 25 Rebounds - Arnika Brown vs. South Alabama; Feb. 17, 2010 (25)  
 10+ Rebounds in five consecutive games - Ivy Brown from Dec. 16, 2015 through Jan. 2, 2016 (five games)  
 10+ Rebounds in ten consecutive games - Chastity Gooch from Dec. 6, 2012 through Jan. 16, 2013 (10)

**ASSISTS**

8 Assists - Micah Jones vs. Charlotte; Feb. 23, 2017 (8)  
 9 Assists - Kendall Noble at Marshall; Feb. 11, 2017 (10)  
 10 Assists - Kendall Noble at Marshall; Feb. 11, 2017 (10)  
 12 Assists - Micah Jones vs. Alabama A&M; Nov. 11, 2016 (12)  
 15 Assists - Tiffany Zaragoza vs. Tennessee Tech; Dec. 19, 2005 (15)

**BLOCKS**

6 Blocks - Jasmine Johnson vs. Eastern Kentucky; Nov. 23, 2008 (6)  
 7 Blocks - Tandreia Green vs. Charlotte; Feb. 17, 1990 (9)  
 8 Blocks - Tandreia Green vs. Charlotte; Feb. 17, 1990 (9)  
 9 Blocks - Tandreia Green vs. Charlotte; Feb. 17, 1990 (9)

**STEALS**

7 Steals - Kendall Noble vs. UAB; Jan. 12, 2017 (7)  
 8 Steals - Kendall Noble vs. North Texas; Feb. 6, 2015 (10)  
 9 Steals - Kendall Noble vs. North Texas; Feb. 6, 2015 (10)  
 10 Steals - Kendall Noble vs. North Texas; Feb. 6, 2015 (10)  
 6 Steals in Consecutive Games - Kendall Noble vs. Troy (6); Feb. 12, 2014 and South Alabama (8); Feb. 15, 2014  
 7 Steals in a Half - Chastity Gooch vs. Belmont; Dec. 29, 2014 (7 in 1st Half)

**MINUTES**

Played every minute - Kendall Noble (40) vs. Ohio State; March 17, 2017  
 Played over 40 minutes - Tashia Brown (42) at Iowa; Nov. 11, 2017

**TEAM**

Scored 100 or more points - Jan. 27, 2010 vs. North Texas (101)  
 Scored 100 or more points [Conference game] - Jan. 27, 2010 vs. North Texas (101)  
 Scored 90 or more points - Nov. 11, 2017 at Iowa (97)  
 Scored 90 or more points [Conference game] - Jan. 1, 2017 vs. FIU (90)  
 Allowed 90 or more points - Nov. 11, 2017 at Iowa (104)  
 Shot 90 percent or better from the free throw line - vs. Florida Atlantic; Dec. 30, 2016 (.905, 19-of-21)  
 Shot 60 percent or better from the field - vs. Austin Peay; Dec. 5, 2015 (.603, 35-of-58)  
 Shot 70 percent or better from the field in a half - vs. Alabama A&M; Nov. 11, 2016 (.704, 19-of-27, 2nd)  
 Shot 80 percent or better from the field in a half - vs. LA Tech; Jan. 29, 2015 (.826, 19-of-23, 2nd)  
 Attempted 45 free throws - vs. Ole Miss; Dec. 4, 2014 (45)  
 Made 35 free throws - vs. Arkansas State; Jan. 30, 1999 (36)  
 Won an overtime game - vs. Kent State on Nov. 26, 2016  
 Won an overtime road game - at Saint Louis on March 25, 2016  
 Lost an overtime game - at Iowa on Nov. 11, 2017  
 Played two overtime game - at Middle Tennessee on Feb. 5, 2004  
 Played three overtime game - None  
 Played four overtime game - None  
 Played consecutive games that went to overtime - at Middle Tennessee on Feb. 5, 2004 and vs. FIU Feb. 9, 2004





**#3 SIDNEE BOPP**  
**JUNIOR | GUARD | 5-6 | 2L**  
**MARMADUKE, ARK.**  
**MARMADUKE HS**  
 like "sydney"

**GAME-BY-GAME STATISTICS**

Opponent	GS	MIN	FG	FGA	PCT	3FG	3FGA	PCT	FT	FTA	PCT	O	D	T	PF	FO	A	TO	B	S	PTS
vs. Missouri		28	3	7	.429	3	7	.429	0	0	.000	0	1	1	3	-	3	2	0	0	9
at Iowa		30	5	8	.625	4	6	.667	0	0	.000	0	1	1	3	-	5	0	0	1	14
NOTRE DAME																					
at Indiana																					
vs. Mercer																					
at Georgia State																					
EVANSVILLE																					
at Southern Ill.																					
MISS. VALL. STATE																					
vs. Stetson																					
vs. Toledo																					
at Ball State																					
Lee University																					
MIDDLE TENN.																					
SOUTHERN MISS																					
FIU																					
at UAB																					
UTSA																					
at Marshall																					
at North Texas																					
at Louisiana Tech																					
FLA. ATLANTIC																					
OLD DOMINION																					
at Rice																					
at Middle Tenn.																					
MARSHALL																					
CHARLOTTE																					
at Southern Miss																					
at UTEP																					

**SINGLE-GAME HIGHS**

**POINTS**

Season 14 (at Iowa, 11/11/17)  
 Career 18 (vs. Louisiana Tech, 3/10/17)

**REBOUNDS**

Season 1 (2 times, last at Iowa, 11/11/17)  
 Career 3 (2 times, last at Rice, 3/4/17)

**FIELD GOALS**

Season 5 (at Iowa, 11/11/17)  
 Career 6 (2 times, last vs. LA Tech, 3/10/17)

**FIELD GOALS ATTEMPTED**

Season 8 (at Iowa, 11/11/17)  
 Career 11 (vs. Louisiana Tech, 3/10/17)

**3-POINT FIELD GOALS**

Season 4 (at Iowa, 11/11/17)  
 Career 6 (vs. Louisiana Tech, 3/10/17)

**3-POINT FIELD GOALS ATTEMPTED**

Season 7 (vs. Missouri, 11/10/17)  
 Career 11 (vs. Louisiana Tech, 3/10/17)

**FREE THROWS**

Season 0  
 Career 2 (2 times, last vs. North Texas, 3/9/17)

**FREE THROWS ATTEMPTED**

Season 0  
 Career 2 (4 times, last vs. North Texas, 3/9/17)

**ASSISTS**

Season 5 (at Iowa, 11/11/17)  
 Career 5 (at Iowa, 11/11/17)

**BLOCKS**

Season 0  
 Career 1 (at Saint Louis, 3/25/16)

**STEALS**

Season 1 (at Iowa, 11/11/17)  
 Career 2 (4 times, last vs. North Texas, 3/9/17)

**MINUTES PLAYED**

Season 30 (at Iowa, 11/11/17)  
 Career 30 (at Iowa, 11/11/17)

**CAREER STATISTICS**

YEAR	G-GS	MIN-AVG	FG-A	PCT	3P-A	PCT	FT-A	PCT	OFF-DEF	TOT-AVG	PF-FO	A	TO	BS	STL	PTS-AVG
2015-16	27-0	209-7.7	10-37	.270	9-32	.281	3-6	.500	3-13	16-0.6	12-0	10	4	1	3	32-1.2
2016-17	28-0	289-10.3	42-94	.447	34-77	.442	2-3	.667	4-12	16-0.6	25-0	22	17	0	10	120-4.3
2017-18	2-0	58-29.0	8-15	.533	7-13	.538	0-0	.000	0-2	2-1.0	6-0	8	2	0	1	23-11.5
<b>TOTALS</b>	<b>57-0</b>	<b>556-9.8</b>	<b>60-146</b>	<b>.411</b>	<b>50-122</b>	<b>.410</b>	<b>5-9</b>	<b>.556</b>	<b>7-27</b>	<b>34-0.6</b>	<b>43-0</b>	<b>40</b>	<b>23</b>	<b>1</b>	<b>14</b>	<b>175-3.1</b>



**#4 DEE GIVENS**  
**R-SOPHOMORE | FORWARD | 6-1 | 1L**  
**LEXINGTON, KY.**  
**LAFAYETTE HS**

**SINGLE-GAME HIGHS**

**POINTS**

Season 20 (vs. Missouri, 11/10/17)  
 Career 20 (vs. Missouri, 11/10/17)

**REBOUNDS**

Season 3 (2 times, last at Iowa, 11/11/17)  
 Career 6 (3 times, last at ECU, 11/30/16)

**FIELD GOALS**

Season 7 (vs. Missouri, 11/10/17)  
 Career 7 (2 times, last vs. Missouri, 11/10/17)

**FIELD GOALS ATTEMPTED**

Season 14 (vs. Missouri, 11/10/17)  
 Career 14 (vs. Missouri, 11/10/17)

**3-POINT FIELD GOALS**

Season 3 (vs. Missouri, 11/10/17)  
 Career 4 (3 times, last vs. Charlotte, 1/23/16)

**3-POINT FIELD GOALS ATTEMPTED**

Season 6 (2 times, last at Iowa, 11/11/17)  
 Career 8 (vs. Charlotte, 1/23/16)

**FREE THROWS**

Season 3 (vs. Missouri, 11/10/17)  
 Career 4 (2 times, last vs. Old Dominion, 1/21/16)

**FREE THROWS ATTEMPTED**

Season 3 (vs. Missouri, 11/10/17)  
 Career 6 (vs. Old Dominion, 1/21/16)

**ASSISTS**

Season 2 (vs. Missouri, 11/10/17)  
 Career 3 (at Ball State, 11/19/15)

**BLOCKS**

Season 2 (at Iowa, 11/11/17)  
 Career 2 (at Iowa, 11/11/17)

**STEALS**

Season 2 (vs. Missouri, 11/10/17)  
 Career 3 (2 times, last vs. AAMU, 11/11/16)

**MINUTES PLAYED**

Season 33 (vs. Missouri, 11/10/17)  
 Career 33 (vs. Missouri, 11/10/17)

**GAME-BY-GAME STATISTICS**

Opponent	GS	MIN	FG	FGA	PCT	3FG	3FGA	PCT	FT	FTA	PCT	O	D	T	PF	FO	A	TO	B	S	PTS
vs. Missouri	*	33	7	14	.500	3	6	.500	3	3	1.000	0	3	3	3	-	2	2	0	2	20
at Iowa	*	31	6	12	.500	2	6	.333	2	2	1.000	1	2	3	5	1	0	0	2	1	16
NOTRE DAME																					
at Indiana																					
vs. Mercer																					
at Georgia State																					
EVANSVILLE																					
at Southern Ill.																					
MISS. VALL. STATE																					
vs. Stetson																					
vs. Toledo																					
at Ball State																					
Lee University																					
MIDDLE TENN.																					
SOUTHERN MISS																					
FIU																					
at UAB																					
UTSA																					
at Marshall																					
at North Texas																					
at Louisiana Tech																					
FLA. ATLANTIC																					
OLD DOMINION																					
at Rice																					
at Middle Tenn.																					
MARSHALL																					
CHARLOTTE																					
at Southern Miss																					
at UTEP																					

**CAREER STATISTICS**

YEAR	G-GS	MIN-AVG	FG-A	PCT	3P-A	PCT	FT-A	PCT	OFF-DEF	TOT-AVG	PF-FO	A	TO	BS	STL	PTS-AVG
2015-16	34-0	425-12.5	66-158	.418	35-98	.357	31-35	.886	27-36	63-1.9	53-0	17	22	8	17	198-5.8
2016-17	8-0	60-7.5	14-31	.452	5-18	.278	2-5	.400	2-11	13-1.6	4-0	3	1	2	4	35-4.4
2017-18	2-2	64-32.0	13-26	.500	5-12	.417	5-5	1.000	1-5	6-3.0	8-1	2	2	2	3	36-18.0
<b>TOTALS</b>	<b>44-2</b>	<b>549-12.5</b>	<b>93-215</b>	<b>.433</b>	<b>45-128</b>	<b>.352</b>	<b>38-45</b>	<b>.844</b>	<b>30-52</b>	<b>82-1.9</b>	<b>65-1</b>	<b>22</b>	<b>25</b>	<b>12</b>	<b>24</b>	<b>269-6.1</b>





**#5 WHITNEY CREECH**  
**SOPHOMORE | GUARD | 5-8 | 1L**  
**JENKINS, KY.**  
**JENKINS HS**

**SINGLE-GAME HIGHS**

**POINTS**

Season 12 (at Iowa, 11/11/17)  
 Career 17 (vs. Charleston, 12/18/16)

**REBOUNDS**

Season 6 (vs. Missouri, 11/10/17)  
 Career 9 (vs. Lipscomb, 12/15/16)

**FIELD GOALS**

Season 5 (at Iowa, 11/11/17)  
 Career 7 (vs. Charleston, 12/18/16)

**FIELD GOALS ATTEMPTED**

Season 11 (at Iowa, 11/11/17)  
 Career 11 (at Iowa, 11/11/17)

**3-POINT FIELD GOALS**

Season 1 (at Iowa, 11/11/17)  
 Career 2 (vs. LA Tech, 2/2/17)

**3-POINT FIELD GOALS ATTEMPTED**

Season 2 (at Iowa, 11/11/17)  
 Career 3 (vs. LA Tech, 2/2/17)

**FREE THROWS**

Season 1 (at Iowa, 11/11/17)  
 Career 3 (2 times, last vs. FIU, 1/1/17)

**FREE THROWS ATTEMPTED**

Season 1 (at Iowa, 11/11/17)  
 Career 4 (2 times, last vs. FIU, 1/1/17)

**ASSISTS**

Season 3 (at Iowa, 11/11/17)  
 Career 7 (vs. Lipscomb, 12/15/16)

**BLOCKS**

Season 0  
 Career 1 (2 times, last vs. LA Tech, 2/2/17)

**STEALS**

Season 2 (at Iowa, 11/11/17)  
 Career 2 (4 times, last at Iowa, 11/11/17)

**MINUTES PLAYED**

Season 33 (at Iowa, 11/11/17)  
 Career 33 (at Iowa, 11/11/17)

**GAME-BY-GAME STATISTICS**

Opponent	GS	MIN	FG	FGA	PCT	3FG	3FGA	PCT	FT	FTA	PCT	O	D	T	PF	FO	A	TO	B	S	PTS
vs. Missouri	*	30	3	5	.600	0	1	.000	0	0	.000	0	6	6	1	-	1	2	0	0	6
at Iowa	*	33	5	11	.455	1	2	.500	1	1	1.000	0	2	2	1	-	3	2	0	2	12
NOTRE DAME																					
at Indiana																					
vs. Mercer																					
at Georgia State																					
EVANSVILLE																					
at Southern Ill.																					
MISS. VALL. STATE																					
vs. Stetson																					
vs. Toledo																					
at Ball State																					
Lee University																					
MIDDLE TENN.																					
SOUTHERN MISS																					
FIU																					
at UAB																					
UTSA																					
at Marshall																					
at North Texas																					
at Louisiana Tech																					
FLA. ATLANTIC																					
OLD DOMINION																					
at Rice																					
at Middle Tenn.																					
MARSHALL																					
CHARLOTTE																					
at Southern Miss																					
at UTEP																					

**CAREER STATISTICS**

YEAR	G-GS	MIN-AVG	FG-A	PCT	3P-A	PCT	FT-A	PCT	OFF-DEF	TOT-AVG	PF-FO	A	TO	BS	STL	PTS-AVG
2016-17	31-0	287-9.3	49-106	.462	7-19	.368	14-17	.824	10-34	44-1.4	11-0	13	20	2	16	119-3.8
2017-18	2-2	63-31.5	8-16	.500	1-3	.333	1-1	1.000	0-8	8-4.0	2-0	4	4	0	2	18-9.0
<b>TOTALS</b>	<b>33-2</b>	<b>350-10.6</b>	<b>57-122</b>	<b>.467</b>	<b>8-22</b>	<b>.364</b>	<b>15-18</b>	<b>.833</b>	<b>10-42</b>	<b>52-1.6</b>	<b>13-0</b>	<b>17</b>	<b>24</b>	<b>2</b>	<b>18</b>	<b>137-4.2</b>



**#10 TASHIA BROWN**  
**SENIOR | FORWARD | 6-1 | 3L**  
**LAKE PARK, GA.**  
**LOWNDES HS**  
**"TAY-zhuh"**

**GAME-BY-GAME STATISTICS**

Opponent	GS	MIN	FG	FGA	PCT	3FG	3FGA	PCT	FT	FTA	PCT	O	D	T	PF	FO	A	TO	B	S	PTS
vs. Missouri	*	38	9	20	.450	2	4	.500	10	11	.909	0	2	2	4	-	2	4	1	6	30
at Iowa	*	42	7	19	.368	1	1	1.000	1	2	.500	3	3	6	4	-	4	2	1	3	16
NOTRE DAME																					
at Indiana																					
vs. Mercer																					
at Georgia State																					
EVANSVILLE																					
at Southern Ill.																					
MISS. VALL. STATE																					
vs. Stetson																					
vs. Toledo																					
at Ball State																					
Lee University																					
MIDDLE TENN.																					
SOUTHERN MISS																					
FIU																					
at UAB																					
UTSA																					
at Marshall																					
at North Texas																					
at Louisiana Tech																					
FLA. ATLANTIC																					
OLD DOMINION																					
at Rice																					
at Middle Tenn.																					
MARSHALL																					
CHARLOTTE																					
at Southern Miss																					
at UTEP																					

**SINGLE-GAME HIGHS**

**POINTS**

Season 30 (vs. Missouri, 11/10/17)  
 Career 34 (at Old Dominion, 2/18/16)

**REBOUNDS**

Season 6 (at Iowa, 11/11/17)  
 Career 10 (vs. Alabama A&M, 11/11/16)

**FIELD GOALS**

Season 9 (vs. Missouri, 11/10/17)  
 Career 13 (at Old Dominion, 2/18/16)

**FIELD GOALS ATTEMPTED**

Season 20 (vs. Missouri, 11/10/17)  
 Career 24 (vs. Rice, 1/14/16)

**3-POINT FIELD GOALS**

Season 2 (vs. Missouri, 11/10/17)  
 Career 3 (2 times, last at UT Arlington, 12/13/15)

**3-POINT FIELD GOALS ATTEMPTED**

Season 4 (vs. Missouri, 11/10/17)  
 Career 5 (4 times, last at Charlotte, 2/20/16)

**FREE THROWS**

Season 10 (vs. Missouri, 11/10/17)  
 Career 11 (vs. Kent State, 11/26/16)

**FREE THROWS ATTEMPTED**

Season 11 (vs. Missouri, 11/10/17)  
 Career 11 (5 times, last vs. Missouri, 11/10/17)

**ASSISTS**

Season 4 (at Iowa, 11/11/17)  
 Career 7 (vs. Austin Peay, 12/5/15)

**BLOCKS**

Season 1 (2 times, last at Iowa, 11/11/17)  
 Career 4 (at UAA, 11/25/15)

**STEALS**

Season 6 (vs. Missouri, 11/10/17)  
 Career 6 (vs. Missouri, 11/10/17)

**MINUTES PLAYED**

Season 42 (at Iowa, 11/11/17)  
 Career 44 (at Saint Louis, 3/25/16)

**CAREER STATISTICS**

YEAR	G-GS	MIN-AVG	FG-A	PCT	3P-A	PCT	FT-A	PCT	OFF-DEF	TOT-AVG	PF-FO	A	TO	BS	STL	PTS-AVG
2014-15	35-5	740-21.1	117-278	.421	14-60	.233	48-79	.608	56-68	124-3.5	56-0	28	52	16	34	296-8.5
2015-16	33-33	1214-36.8	231-527	.438	18-61	.295	99-137	.723	40-81	121-3.7	61-0	74	88	16	41	579-17.5
2016-17	34-34	1033-30.4	170-407	.418	13-44	.295	103-141	.730	62-79	141-4.1	76-2	54	54	14	45	456-13.4
2017-18	2-2	80-40.0	16-39	.410	3-5	.600	11-13	.846	3-5	8-4.0	8-0	6	6	2	9	46-23.0
<b>TOTALS</b>	<b>104-74</b>	<b>3067-29.5</b>	<b>534-1251</b>	<b>.429</b>	<b>48-170</b>	<b>.282</b>	<b>261-370</b>	<b>.705</b>	<b>161-233</b>	<b>394-3.8</b>	<b>201-2</b>	<b>162</b>	<b>200</b>	<b>48</b>	<b>129</b>	<b>1377-13.2</b>



**#12 NICHEL TAMPA**  
**FRESHMAN | GUARD | 5-5 | HS**  
**ALPHARETTA, GA.**  
**ST. FRANCIS HS**  
 like "Michelle" with an N

**SINGLE-GAME HIGHS**

**POINTS**

Season	0
Career	0

**REBOUNDS**

Season	1 (vs. Missouri, 11/10/17)
Career	1 (vs. Missouri, 11/10/17)

**FIELD GOALS**

Season	0
Career	0

**FIELD GOALS ATTEMPTED**

Season	2 (at Iowa, 11/11/17)
Career	2 (at Iowa, 11/11/17)

**3-POINT FIELD GOALS**

Season	0
Career	0

**3-POINT FIELD GOALS ATTEMPTED**

Season	0
Career	0

**FREE THROWS**

Season	0
Career	0

**FREE THROWS ATTEMPTED**

Season	0
Career	0

**ASSISTS**

Season	0
Career	0

**BLOCKS**

Season	0
Career	0

**STEALS**

Season	0
Career	0

**MINUTES PLAYED**

Season	3 (2 times, last at Iowa, 11/11/17)
Career	3 (2 times, last at Iowa, 11/11/17)

**GAME-BY-GAME STATISTICS**

Opponent	GS	MIN	FG	FGA	PCT	3FG	3FGA	PCT	FT	FTA	PCT	O	D	T	PF	FO	A	TO	B	S	PTS
vs. Missouri	3	0	0	0	.000	0	0	.000	0	0	.000	0	1	1	1	-	0	0	0	0	0
at Iowa	3	0	2	2	.000	0	0	.000	0	0	.000	0	0	0	1	-	0	0	0	0	0
NOTRE DAME																					
at Indiana																					
vs. Mercer																					
at Georgia State																					
EVANSVILLE																					
at Southern Ill.																					
MISS. VALL. STATE																					
vs. Stetson																					
vs. Toledo																					
at Ball State																					
Lee University																					
MIDDLE TENN.																					
SOUTHERN MISS																					
FIU																					
at UAB																					
UTSA																					
at Marshall																					
at North Texas																					
at Louisiana Tech																					
FLA. ATLANTIC																					
OLD DOMINION																					
at Rice																					
at Middle Tenn.																					
MARSHALL																					
CHARLOTTE																					
at Southern Miss																					
at UTEP																					

**CAREER STATISTICS**

YEAR	G-GS	MIN-AVG	FG-A	PCT	3P-A	PCT	FT-A	PCT	OFF-DEF	TOT-AVG	PF-FO	A	TO	BS	STL	PTS-AVG
2017-18	2-0	6-3.0	0-2	.000	0-0	.000	0-0	.000	0-1	1-0.5	2-0	0	0	0	0	0-0.0
<b>TOTALS</b>	<b>2-0</b>	<b>6-3.0</b>	<b>0-2</b>	<b>.000</b>	<b>0-0</b>	<b>.000</b>	<b>0-0</b>	<b>.000</b>	<b>0-1</b>	<b>1-0.5</b>	<b>2-0</b>	<b>0</b>	<b>0</b>	<b>0</b>	<b>0</b>	<b>0-0.0</b>





**#13 MALAKA FRANK**  
**SOPHOMORE | GUARD | 5-10 | 1L**  
**FRANKFORT, KY.**  
**FRANKLIN COUNTY HS**  
**"muh-LAKE-uh"**

**SINGLE-GAME HIGHS**

**POINTS**

Season 0  
 Career 6 (at Austin Peay, 12/3/16)

**REBOUNDS**

Season 0  
 Career 8 (at UTEP, 1/26/17)

**FIELD GOALS**

Season 0  
 Career 2 (2 times, last at Austin Peay, 12/3/16)

**FIELD GOALS ATTEMPTED**

Season 0  
 Career 4 (2 times, last at Austin Peay, 12/3/16)

**3-POINT FIELD GOALS**

Season 0  
 Career 0

**3-POINT FIELD GOALS ATTEMPTED**

Season 0  
 Career 0

**FREE THROWS**

Season 0  
 Career 2 (3 times, last at UTEP, 1/26/17)

**FREE THROWS ATTEMPTED**

Season 0  
 Career 4 (at UTEP, 1/26/17)

**ASSISTS**

Season 0  
 Career 1 (2 times, last at UTSA, 1/28/17)

**BLOCKS**

Season 0  
 Career 2 (at UTEP, 1/26/17)

**STEALS**

Season 0  
 Career 5 (at Austin Peay, 12/3/16)

**MINUTES PLAYED**

Season 19 (at UTEP, 1/26/17)  
 Career 19 (at UTEP, 1/26/17)

**GAME-BY-GAME STATISTICS**

Opponent	GS	MIN	FG	FGA	PCT	3FG	3FGA	PCT	FT	FTA	PCT	O	D	T	PF	FO	A	TO	B	S	PTS	
vs. Missouri																						DNP
at Iowa																						DNP
NOTRE DAME																						
at Indiana																						
vs. Mercer																						
at Georgia State																						
EVANSVILLE																						
at Southern Ill.																						
MISS. VALL. STATE																						
vs. Stetson																						
vs. Toledo																						
at Ball State																						
Lee University																						
MIDDLE TENN.																						
SOUTHERN MISS																						
FIU																						
at UAB																						
UTSA																						
at Marshall																						
at North Texas																						
at Louisiana Tech																						
FLA. ATLANTIC																						
OLD DOMINION																						
at Rice																						
at Middle Tenn.																						
MARSHALL																						
CHARLOTTE																						
at Southern Miss																						
at UTEP																						

**CAREER STATISTICS**

YEAR	G-GS	MIN-AVG	FG-A	PCT	3P-A	PCT	FT-A	PCT	OFF-DEF	TOT-AVG	PF-FO	A	TO	BS	STL	PTS-AVG
2016-17	26-0	237-9.1	8-20	.400	0-0	.000	9-17	.529	20-32	52-2.0	37-0	2	11	3	16	25-1.0
2017-18	0-0	0-0.0	0-0	.000	0-0	.000	0-0	.000	0-0	0-0.0	0-0	0	0	0	0	0-0.0
<b>TOTALS</b>	<b>26-0</b>	<b>237-9.1</b>	<b>8-20</b>	<b>.400</b>	<b>0-0</b>	<b>.000</b>	<b>9-17</b>	<b>.529</b>	<b>20-32</b>	<b>52-2.0</b>	<b>37-0</b>	<b>2</b>	<b>11</b>	<b>3</b>	<b>16</b>	<b>25-1.0</b>



**#15 RANEEM ELGEDAWY**  
**FRESHMAN | FORWARD | 6-4 | HS**  
**ALEXANDRIA, EGYPT**  
**rah-NEEM el-juh-DAY-wee**

**SINGLE-GAME HIGHS**

**POINTS**

Season 6 (vs. Missouri, 11/10/17)  
 Career 6 (vs. Missouri, 11/10/17)

**REBOUNDS**

Season 6 (at Iowa, 11/11/17)  
 Career 6 (at Iowa, 11/11/17)

**FIELD GOALS**

Season 2 (2 times, last at Iowa, 11/11/17)  
 Career 2 (2 times, last at Iowa, 11/11/17)

**FIELD GOALS ATTEMPTED**

Season 5 (vs. Missouri, 11/10/17)  
 Career 5 (vs. Missouri, 11/10/17)

**3-POINT FIELD GOALS**

Season 0  
 Career 0

**3-POINT FIELD GOALS ATTEMPTED**

Season 0  
 Career 0

**FREE THROWS**

Season 2 (vs. Missouri, 11/10/17)  
 Career 2 (vs. Missouri, 11/10/17)

**FREE THROWS ATTEMPTED**

Season 4 (vs. Missouri, 11/10/17)  
 Career 4 (vs. Missouri, 11/10/17)

**ASSISTS**

Season 1 (at Iowa, 11/11/17)  
 Career 1 (at Iowa, 11/11/17)

**BLOCKS**

Season 2 (vs. Missouri, 11/10/17)  
 Career 2 (vs. Missouri, 11/10/17)

**STEALS**

Season 2 (vs. Missouri, 11/10/17)  
 Career 2 (vs. Missouri, 11/10/17)

**MINUTES PLAYED**

Season 29 (at Iowa, 11/11/17)  
 Career 29 (at Iowa, 11/11/17)

**GAME-BY-GAME STATISTICS**

Opponent	GS	MIN	FG	FGA	PCT	3FG	3FGA	PCT	FT	FTA	PCT	O	D	T	PF	FO	A	TO	B	S	PTS
vs. Missouri	*	25	2	5	.400	0	0	.000	2	4	.500	2	0	2	5	1	0	4	2	2	6
at Iowa	*	29	2	4	.500	0	0	.000	0	2	.000	2	4	6	2	-	1	1	0	1	4
NOTRE DAME																					
at Indiana																					
vs. Mercer																					
at Georgia State																					
EVANSVILLE																					
at Southern Ill.																					
MISS. VALL. STATE																					
vs. Stetson																					
vs. Toledo																					
at Ball State																					
Lee University																					
MIDDLE TENN.																					
SOUTHERN MISS																					
FIU																					
at UAB																					
UTSA																					
at Marshall																					
at North Texas																					
at Louisiana Tech																					
FLA. ATLANTIC																					
OLD DOMINION																					
at Rice																					
at Middle Tenn.																					
MARSHALL																					
CHARLOTTE																					
at Southern Miss																					
at UTEP																					

**CAREER STATISTICS**

YEAR	G-GS	MIN-AVG	FG-A	PCT	3P-A	PCT	FT-A	PCT	OFF-DEF	TOT-AVG	PF-FO	A	TO	BS	STL	PTS-AVG
2017-18	2-2	54-27.0	4-9	.444	0-0	.000	2-6	.333	4-4	8-4.0	7-1	1	5	2	3	10-5.0
<b>TOTALS</b>	<b>2-2</b>	<b>54-27.0</b>	<b>4-9</b>	<b>.444</b>	<b>0-0</b>	<b>.000</b>	<b>2-6</b>	<b>.333</b>	<b>4-4</b>	<b>8-4.0</b>	<b>7-1</b>	<b>1</b>	<b>5</b>	<b>2</b>	<b>3</b>	<b>10-5.0</b>



**#20 TERRI SMITH**  
**FRESHMAN | GUARD | 5-7 | HS**  
**HARVEST, ALA.**  
**SPARKMAN HS**

**SINGLE-GAME HIGHS**

**POINTS**

Season	0
Career	0

**REBOUNDS**

Season	0
Career	0

**FIELD GOALS**

Season	0
Career	0

**FIELD GOALS ATTEMPTED**

Season	2 (at Iowa, 11/11/17)
Career	2 (at Iowa, 11/11/17)

**3-POINT FIELD GOALS**

Season	0
Career	0

**3-POINT FIELD GOALS ATTEMPTED**

Season	2 (at Iowa, 11/11/17)
Career	2 (at Iowa, 11/11/17)

**FREE THROWS**

Season	0
Career	0

**FREE THROWS ATTEMPTED**

Season	0
Career	0

**ASSISTS**

Season	0
Career	0

**BLOCKS**

Season	0
Career	0

**STEALS**

Season	0
Career	0

**MINUTES PLAYED**

Season	2 (at Iowa, 11/11/17)
Career	2 (at Iowa, 11/11/17)

**GAME-BY-GAME STATISTICS**

Opponent	GS	MIN	FG	FGA	PCT	3FG	3FGA	PCT	FT	FTA	PCT	O	D	T	PF	FO	A	TO	B	S	PTS	
vs. Missouri																						
at Iowa	2	0	2	.000	0	2	.000	0	0	0	.000	0	0	0	0	-	0	0	0	0	0	0
NOTRE DAME																						
at Indiana																						
vs. Mercer																						
at Georgia State																						
EVANSVILLE																						
at Southern Ill.																						
MISS. VALL. STATE																						
vs. Stetson																						
vs. Toledo																						
at Ball State																						
Lee University																						
MIDDLE TENN.																						
SOUTHERN MISS																						
FIU																						
at UAB																						
UTSA																						
at Marshall																						
at North Texas																						
at Louisiana Tech																						
FLA. ATLANTIC																						
OLD DOMINION																						
at Rice																						
at Middle Tenn.																						
MARSHALL																						
CHARLOTTE																						
at Southern Miss																						
at UTEP																						

**CAREER STATISTICS**

YEAR	G-GS	MIN-AVG	FG-A	PCT	3P-A	PCT	FT-A	PCT	OFF-DEF	TOT-AVG	PF-FO	A	TO	BS	STL	PTS-AVG
2017-18	1-0	2-2.0	0-2	.000	0-2	.000	0-0	.000	0-0	0-0.0	0-0	0	0	0	0	0-0.0
<b>TOTALS</b>	<b>1-0</b>	<b>2-2.0</b>	<b>0-2</b>	<b>.000</b>	<b>0-2</b>	<b>.000</b>	<b>0-0</b>	<b>.000</b>	<b>0-0</b>	<b>0-0.0</b>	<b>0-0</b>	<b>0</b>	<b>0</b>	<b>0</b>	<b>0</b>	<b>0-0.0</b>





**#22 SHERRY PORTER**  
**FRESHMAN | GUARD | 5-7 | HS**  
**BATON ROUGE, LA.**  
**MADISON PREP ACADEMY**

**SINGLE-GAME HIGHS**

**POINTS**

Season 4 (at Iowa, 11/11/17)  
 Career 4 (at Iowa, 11/11/17)

**REBOUNDS**

Season 4 (at Iowa, 11/11/17)  
 Career 4 (at Iowa, 11/11/17)

**FIELD GOALS**

Season 2 (at Iowa, 11/11/17)  
 Career 2 (at Iowa, 11/11/17)

**FIELD GOALS ATTEMPTED**

Season 9 (at Iowa, 11/11/17)  
 Career 9 (at Iowa, 11/11/17)

**3-POINT FIELD GOALS**

Season 0  
 Career 0

**3-POINT FIELD GOALS ATTEMPTED**

Season 0  
 Career 0

**FREE THROWS**

Season 0  
 Career 0

**FREE THROWS ATTEMPTED**

Season 0  
 Career 0

**ASSISTS**

Season 2 (vs. Missouri, 11/10/17)  
 Career 2 (vs. Missouri, 11/10/17)

**BLOCKS**

Season 0  
 Career 0

**STEALS**

Season 1 (at Iowa, 11/11/17)  
 Career 1 (at Iowa, 11/11/17)

**MINUTES PLAYED**

Season 20 (vs. Missouri, 11/10/17)  
 Career 20 (vs. Missouri, 11/10/17)

**GAME-BY-GAME STATISTICS**

Opponent	GS	MIN	FG	FGA	PCT	3FG	3FGA	PCT	FT	FTA	PCT	O	D	T	PF	FO	A	TO	B	S	PTS
vs. Missouri		20	1	5	.200	0	0	.000	0	0	.000	2	1	3	1	-	2	0	0	0	2
at Iowa		15	2	9	.222	0	0	.000	0	0	.000	3	1	4	2	-	1	1	0	1	4
NOTRE DAME																					
at Indiana																					
vs. Mercer																					
at Georgia State																					
EVANSVILLE																					
at Southern Ill.																					
MISS. VALL. STATE																					
vs. Stetson																					
vs. Toledo																					
at Ball State																					
Lee University																					
MIDDLE TENN.																					
SOUTHERN MISS																					
FIU																					
at UAB																					
UTSA																					
at Marshall																					
at North Texas																					
at Louisiana Tech																					
FLA. ATLANTIC																					
OLD DOMINION																					
at Rice																					
at Middle Tenn.																					
MARSHALL																					
CHARLOTTE																					
at Southern Miss																					
at UTEP																					

**CAREER STATISTICS**

YEAR	G-GS	MIN-AVG	FG-A	PCT	3P-A	PCT	FT-A	PCT	OFF-DEF	TOT-AVG	PF-FO	A	TO	BS	STL	PTS-AVG
2017-18	2-0	35-17.5	3-14	.214	0-0	.000	0-0	.000	5-2	7-3.5	3-0	3	1	0	1	6-3.0
<b>TOTALS</b>	<b>2-0</b>	<b>35-17.5</b>	<b>3-14</b>	<b>.214</b>	<b>0-0</b>	<b>.000</b>	<b>0-0</b>	<b>.000</b>	<b>5-2</b>	<b>7-3.5</b>	<b>3-0</b>	<b>3</b>	<b>1</b>	<b>0</b>	<b>1</b>	<b>6-3.0</b>



**#23 IVY BROWN**  
**SENIOR | FORWARD | 6-1 | 3L**  
**HODGENVILLE, KY.**  
**LARUE COUNTY HS**

**SINGLE-GAME HIGHS**

**POINTS**

Season 31 (at Iowa, 11/11/17)  
 Career 31 (at Iowa, 11/11/17)

**REBOUNDS**

Season 6 (at Iowa, 11/11/17)  
 Career 17 (vs. Charleston, 12/18/16)

**FIELD GOALS**

Season 12 (at Iowa, 11/11/17)  
 Career 12 (at Iowa, 11/11/17)

**FIELD GOALS ATTEMPTED**

Season 16 (at Iowa, 11/11/17)  
 Career 17 (at UAA, 11/25/15)

**3-POINT FIELD GOALS**

Season 6 (at Iowa, 11/11/17)  
 Career 6 (at Iowa, 11/11/17)

**3-POINT FIELD GOALS ATTEMPTED**

Season 9 (at Iowa, 11/11/17)  
 Career 9 (at Iowa, 11/11/17)

**FREE THROWS**

Season 4 (vs. Missouri, 11/10/17)  
 Career 11 (at Marshall, 2/11/17)

**FREE THROWS ATTEMPTED**

Season 4 (vs. Missouri, 11/10/17)  
 Career 13 (at Marshall, 2/11/17)

**ASSISTS**

Season 2 (at Iowa, 11/11/17)  
 Career 3 (3 times, last vs. FIU, 1/1/17)

**BLOCKS**

Season 2 (vs. Missouri, 11/10/17)  
 Career 5 (at Saint Louis, 3/25/16)

**STEALS**

Season 2 (vs. Missouri, 11/10/17)  
 Career 4 (at Lipscomb, 12/21/15)

**MINUTES PLAYED**

Season 40 (at Iowa, 11/11/17)  
 Career 42 (2 times, last at Saint Louis, 3/25/16)

**GAME-BY-GAME STATISTICS**

Opponent	GS	MIN	FG	FGA	PCT	3FG	3FGA	PCT	FT	FTA	PCT	O	D	T	PF	FO	A	TO	B	S	PTS
vs. Missouri	*	23	1	4	.250	0	1	.000	4	4	1.000	4	1	5	4	-	0	2	2	2	6
at Iowa	*	40	12	16	.750	6	9	.667	1	2	.500	2	4	6	5	1	2	1	0	1	31
NOTRE DAME																					
at Indiana																					
vs. Mercer																					
at Georgia State																					
EVANSVILLE																					
at Southern Ill.																					
MISS. VALL. STATE																					
vs. Stetson																					
vs. Toledo																					
at Ball State																					
Lee University																					
MIDDLE TENN.																					
SOUTHERN MISS																					
FIU																					
at UAB																					
UTSA																					
at Marshall																					
at North Texas																					
at Louisiana Tech																					
FLA. ATLANTIC																					
OLD DOMINION																					
at Rice																					
at Middle Tenn.																					
MARSHALL																					
CHARLOTTE																					
at Southern Miss																					
at UTEP																					

**CAREER STATISTICS**

YEAR	G-GS	MIN-AVG	FG-A	PCT	3P-A	PCT	FT-A	PCT	OFF-DEF	TOT-AVG	PF-FO	A	TO	BS	STL	PTS-AVG
2014-15	35-1	415-11.9	39-134	.291	12-65	.185	25-34	.735	35-60	95-2.7	53-3	13	22	11	16	115-3.3
2015-16	34-34	1036-30.5	143-296	.483	25-69	.362	79-106	.745	123-168	291-8.6	108-5	35	58	44	36	390-11.5
2016-17	34-34	1029-30.3	165-306	.539	37-108	.343	78-91	.857	131-147	278-8.2	102-4	33	53	45	38	445-13.1
2017-18	2-2	63-31.5	13-20	.650	6-10	.600	5-6	.833	6-5	11-5.5	9-1	2	3	2	3	37-18.5
<b>TOTALS</b>	<b>105-71</b>	<b>2543-24.2</b>	<b>360-756</b>	<b>.476</b>	<b>80-252</b>	<b>.317</b>	<b>187-237</b>	<b>.789</b>	<b>295-380</b>	<b>675-6.4</b>	<b>272-13</b>	<b>83</b>	<b>136</b>	<b>102</b>	<b>93</b>	<b>987-9.4</b>



**#30 ELIZABETH ANDERSON**  
**FRESHMAN | FORWARD | 6-1 | HS**  
**LOUISVILLE, KY.**  
**MERCY ACADEMY**

**SINGLE-GAME HIGHS**

**POINTS**

Season	0
Career	0

**REBOUNDS**

Season	0
Career	0

**FIELD GOALS**

Season	0
Career	0

**FIELD GOALS ATTEMPTED**

Season	0
Career	0

**3-POINT FIELD GOALS**

Season	0
Career	0

**3-POINT FIELD GOALS ATTEMPTED**

Season	0
Career	0

**FREE THROWS**

Season	0
Career	0

**FREE THROWS ATTEMPTED**

Season	0
Career	0

**ASSISTS**

Season	0
Career	0

**BLOCKS**

Season	0
Career	0

**STEALS**

Season	0
Career	0

**MINUTES PLAYED**

Season	0
Career	0

**GAME-BY-GAME STATISTICS**

Opponent	GS	MIN	FG	FGA	PCT	3FG	3FGA	PCT	FT	FTA	PCT	O	D	T	PF	FO	A	TO	B	S	PTS	
vs. Missouri																						DNP
at Iowa																						DNP
NOTRE DAME																						
at Indiana																						
vs. Mercer																						
at Georgia State																						
EVANSVILLE																						
at Southern Ill.																						
MISS. VALL. STATE																						
vs. Stetson																						
vs. Toledo																						
at Ball State																						
Lee University																						
MIDDLE TENN.																						
SOUTHERN MISS																						
FIU																						
at UAB																						
UTSA																						
at Marshall																						
at North Texas																						
at Louisiana Tech																						
FLA. ATLANTIC																						
OLD DOMINION																						
at Rice																						
at Middle Tenn.																						
MARSHALL																						
CHARLOTTE																						
at Southern Miss																						
at UTEP																						

**CAREER STATISTICS**

YEAR	G-GS	MIN-AVG	FG-A	PCT	3P-A	PCT	FT-A	PCT	OFF-DEF	TOT-AVG	PF-FO	A	TO	BS	STL	PTS-AVG
2017-18	0-0	0-0.0	0-0	.000	0-0	.000	0-0	.000	0-0	0-0.0	0-0	0	0	0	0	0-0.0
<b>TOTALS</b>	<b>0-0</b>	<b>0-0.0</b>	<b>0-0</b>	<b>.000</b>	<b>0-0</b>	<b>.000</b>	<b>0-0</b>	<b>.000</b>	<b>0-0</b>	<b>0-0.0</b>	<b>0-0</b>	<b>0</b>	<b>0</b>	<b>0</b>	<b>0</b>	<b>0-0.0</b>





**#32 KAYLA SMITH**  
**JUNIOR | GUARD/FORWARD | 5-11 | 2L**  
**FAYETTEVILLE, GA.**  
**FAYETTE COUNTY HS**

**SINGLE-GAME HIGHS**

**POINTS**

Season 0  
 Career 18 (vs. Dayton, 3/17/16)

**REBOUNDS**

Season 0  
 Career 7 (vs. UT Arlington, 11/16/16)

**FIELD GOALS**

Season 0  
 Career 6 (at UTSA, 1/28/17)

**FIELD GOALS ATTEMPTED**

Season 0  
 Career 12 (at Ball State, 11/19/15)

**3-POINT FIELD GOALS**

Season 0  
 Career 3 (2 times, last at UTSA, 1/28/17)

**3-POINT FIELD GOALS ATTEMPTED**

Season 0  
 Career 6 (at Ball State, 11/19/15)

**FREE THROWS**

Season 0  
 Career 6 (vs. Dayton, 3/17/16)

**FREE THROWS ATTEMPTED**

Season 0  
 Career 6 (vs. Dayton, 3/17/16)

**ASSISTS**

Season 0  
 Career 4 (4 times, last at Saint Louis, 3/25/16)

**BLOCKS**

Season 0  
 Career 2 (at Ball State, 11/19/15)

**STEALS**

Season 0  
 Career 2 (5 times, last vs. Lipscomb, 12/15/16)

**MINUTES PLAYED**

Season 0  
 Career 34 (2 times, last vs. UT Martin, 3/21/16)

**GAME-BY-GAME STATISTICS**

Opponent	GS	MIN	FG	FGA	PCT	3FG	3FGA	PCT	FT	FTA	PCT	O	D	T	PF	FO	A	TO	B	S	PTS	
vs. Missouri																						DNP
at Iowa																						DNP
NOTRE DAME																						
at Indiana																						
vs. Mercer																						
at Georgia State																						
EVANSVILLE																						
at Southern Ill.																						
MISS. VALL. STATE																						
vs. Stetson																						
vs. Toledo																						
at Ball State																						
Lee University																						
MIDDLE TENN.																						
SOUTHERN MISS																						
FIU																						
at UAB																						
UTSA																						
at Marshall																						
at North Texas																						
at Louisiana Tech																						
FLA. ATLANTIC																						
OLD DOMINION																						
at Rice																						
at Middle Tenn.																						
MARSHALL																						
CHARLOTTE																						
at Southern Miss																						
at UTEP																						

**CAREER STATISTICS**

YEAR	G-GS	MIN-AVG	FG-A	PCT	3P-A	PCT	FT-A	PCT	OFF-DEF	TOT-AVG	PF-FO	A	TO	BS	STL	PTS-AVG
2015-16	33-31	807-24.5	68-183	.372	25-86	.291	23-32	.719	21-29	50-1.5	50-0	45	41	5	14	184-5.6
2016-17	31-7	355-11.5	46-108	.426	10-35	.286	17-23	.739	26-11	37-1.2	37-1	16	17	2	12	119-3.8
2017-18	0-0	0-0.0	0-0	.000	0-0	.000	0-0	.000	0-0	0-0.0	0-0	0	0	0	0	0-0.0
<b>TOTALS</b>	<b>64-38</b>	<b>1162-18.2</b>	<b>114-291</b>	<b>.392</b>	<b>35-121</b>	<b>.289</b>	<b>40-55</b>	<b>.727</b>	<b>47-40</b>	<b>87-1.4</b>	<b>87-1</b>	<b>61</b>	<b>58</b>	<b>7</b>	<b>26</b>	<b>303-4.7</b>

**2017-18 WKU Lady Topper Basketball  
WKU Combined Team Statistics (as of Nov 11, 2017)  
All games**

<b>RECORD:</b>	<b>OVERALL</b>	<b>HOME</b>	<b>AWAY</b>	<b>NEUTRAL</b>
ALL GAMES	1-1	0-0	0-1	1-0
CONFERENCE	0-0	0-0	0-0	0-0
NON-CONFERENCE	1-1	0-0	0-1	1-0

#	Player	gp-gs	min	avg	Total		3-Point		F-Throw		Rebounds				pf	dq	a	to	blk	stl	pts	avg
					fg-fga	fg%	3fg-fga	3fg%	ft-fta	ft%	off	def	tot	avg								
10	BROWN, Tashia	2-2	80	40.0	16-39	.410	3-5	.600	11-13	.846	3	5	8	4.0	8	0	6	6	2	9	46	23.0
23	BROWN, Ivy	2-2	63	31.5	13-20	.650	6-10	.600	5-6	.833	6	5	11	5.5	9	1	2	3	2	3	37	18.5
04	GIVENS, Dee	2-2	64	32.0	13-26	.500	5-12	.417	5-5	1.000	1	5	6	3.0	8	1	2	2	2	3	36	18.0
03	BOPP, Sidnee	2-0	58	29.0	8-15	.533	7-13	.538	0-0	.000	0	2	2	1.0	6	0	8	2	0	1	23	11.5
05	CREECH, Whitney	2-2	63	31.5	8-16	.500	1-3	.333	1-1	1.000	0	8	8	4.0	2	0	4	4	0	2	18	9.0
15	ELGEDAWY, Raneem	2-2	54	27.0	4-9	.444	0-0	.000	2-6	.333	4	4	8	4.0	7	1	1	5	2	3	10	5.0
22	PORTER, Sherry	2-0	35	17.5	3-14	.214	0-0	.000	0-0	.000	5	2	7	3.5	3	0	3	1	0	1	6	3.0
12	TAMPA, Nichel	2-0	6	3.0	0-2	.000	0-0	.000	0-0	.000	0	1	1	0.5	2	0	0	0	0	0	0	0.0
20	SMITH, Terri	1-0	2	2.0	0-2	.000	0-2	.000	0-0	.000	0	0	0	0.0	0	0	0	0	0	0	0	0.0
<b>Team</b>											6	5	11					1				
Total.....		2	425		65-143	.455	22-45	.489	24-31	.774	25	37	62	31.0	45	3	26	24	8	22	176	88.0
Opponents.....		2	425		64-129	.496	16-43	.372	36-44	.818	31	57	88	44.0	33	1	46	35	7	10	180	90.0

TEAM STATISTICS	WKU	OPP	Date	Opponent	Score	Att.
SCORING	176	180	11/10/17	vs Missouri	W 79-76	1015
Points per game	88.0	90.0	11/11/17	at Iowa	Lot 97-104	3649
Scoring margin	-2.0	-				
FIELD GOALS-ATT	65-143	64-129		* - Conference game		
Field goal pct	.455	.496				
3 POINT FG-ATT	22-45	16-43				
3-point FG pct	.489	.372				
3-pt FG made per game	11.0	8.0				
FREE THROWS-ATT	24-31	36-44				
Free throw pct	.774	.818				
F-Throws made per game	12.0	18.0				
REBOUNDS	62	88				
Rebounds per game	31.0	44.0				
Rebounding margin	-13.0	-				
ASSISTS	26	46				
Assists per game	13.0	23.0				
TURNOVERS	24	35				
Turnovers per game	12.0	17.5				
Turnover margin	+5.5	-				
Assist/turnover ratio	1.1	1.3				
STEALS	22	10				
Steals per game	11.0	5.0				
BLOCKS	8	7				
Blocks per game	4.0	3.5				
ATTENDANCE	0	4664				
Home games-Avg/Game	0-0	1-3649				
Neutral site-Avg/Game	-	1-1015				

Score by Periods	1st	2nd	3rd	4th	OT	Totals
WKU	42	49	43	38	4	176
Opponents	39	39	48	43	11	180

TV/RADIO ROSTER



#1  
**Arame Niang**  
So. | Forward  
6-3  
Rufisque, Senegal



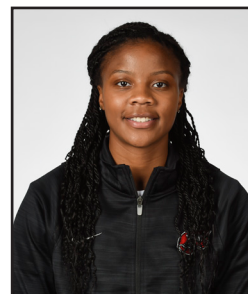
#3  
**Sidnee Bopp**  
Jr. | Guard  
5-6  
Marmaduke, Ark.



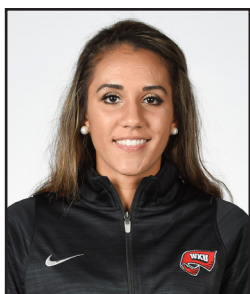
#4  
**Dee Givens**  
R-So. | Forward  
6-1  
Lexington, Ky.



#5  
**Whitney Creech**  
So. | Guard  
5-8  
Jenkins, Ky.



#10  
**Tashia Brown**  
Sr. | Forward  
6-1  
Lake Park, Ga.



#11  
**Alexis Brewer**  
Jr. | Guard  
5-9  
Buffalo, Ky.



#12  
**Nichel Tampa**  
Fr. | Guard  
5-5  
Alpharetta, Ga.



#13  
**Malaka Frank**  
So. | Guard  
5-10  
Frankfort, Ky.



#15  
**Raneem Elgedawy**  
Fr. | Forward  
6-4  
Alexandria, Egypt



#20  
**Terri Smith**  
Fr. | Guard  
5-7  
Harvest, Ala.



#22  
**Sherry Porter**  
Fr. | Guard  
5-7  
Baton Rouge, La.



#23  
**Ivy Brown**  
Sr. | Forward  
6-1  
Hodgenville, Ky.



#30  
**Elizabeth Anderson**  
Fr. | Forward  
6-1  
Louisville, Ky.



#32  
**Kayla Smith**  
Jr. | Guard/Forward  
5-11  
Fayetteville, Ga.