



2009 BIG EAST Women's Golf Championship

April 19-21 • Lake Jovita • Dade City, Fla.

Notre Dame Women's Golf Notes

2008-09 SCHEDULE & RESULTS

Date	Tournament/Course	Place
S 11-14	Cougar Classic Charleston, S.C./Yeaman's Hall	8th (22)
S 20-21	Mary Fossum Invitational East Lansing, Mich./Forest Akers West	3rd (12)
S 29-30	Heather Farr Memorial Broomfield, Colo./Omni Interlocken	1st (20)
O 18-19	Lady Northern Invitational West Lafayette, Ind./Kampen	3rd (14)
O 24-26	Landfall Tradition Wilmington, N.C./CC of Landfall	7th (12)
F 9-11	Northrop Grumman Reg. Challenge Palos Verdes, Calif./Palos Verdes	12th (16)
M 13-15	LSU Golf Classic Baton Rouge, La./LSU Golf Club	12th (18)
M 20-22	Betsy Rawls Longhorn Invitational Austin, Texas/The UT Golf Club	6th (17)
A 3-5	Bryan National Collegiate Greensboro, N.C./Bryan Park	14th (18)
A 19-21	BIG EAST Championship Dade City, Fla./Lake Jovita	
M 7-9	NCAA Regional TBA	
M 19-22	NCAA Championship Owings Mills, Md./Caves Valley	

BIG EAST Preview

The Notre Dame women's golf team will be in pursuit of the program's fourth conference title when play begins at the 2009 BIG EAST Championship on Sunday, April 19 at the par 72, 5,968-yard Lake Jovita Golf Club in Dade City, Fla. The Fighting Irish enter the three-day, 54-hole event as the second seed in the seven-team field.

This season marks the seventh BIG EAST women's golf championship. For the second consecutive year, the winner of the championship will receive an automatic bid to the NCAA Championship. In addition to Notre Dame, the six other teams comprising the field are (BIG EAST tournament seed/Golfstat ranking) Louisville (1/15), Cincinnati (5/132), St. John's (6/143), Georgetown (4/109), South Florida (3/76) and Rutgers (7/198).

The tournament will include 54 holes, with each day consisting of one 18-hole round. Each team's lineup will include five golfers; with the lowest four scores for each round counting towards the overall team score for that day. All three days of play will begin with groups teeing off at 8:20 a.m. On Sunday and Monday, everyone will start at the first hole, with tee times running through 10:20 a.m. Then for the final round, there will be a split-tee start that runs through 8:40 a.m. The teams will be reseeded for play on Monday and Tuesday based on their scores from the previous round. The top-10 individual finishers will be selected as members of the 2009 all-BIG EAST Team.

Notre Dame's probable lineup includes senior captain **Lisa Maunu** (St. Thomas, Ontario/Parkside Collegiate Institute), juniors **Annie Brophy** (Spokane, Wash./Gonzaga Prep) and **Kristin Wetzel** (Middletown, N.Y./Hilton Head Prep), sophomore **So-Hyun Park** (Seoul, South Korea/Bradenton Prep) and freshman **Becca Huffer** (Denver, Colo./Littleton HS).

Following The Irish At The Championship

Daily recaps will be posted at und.com, while complete results and updated tee times will be posted on www.bigeast.org. Live scoring of the championship will be available through www.Golfstat.com.

The Course

The 2009 BIG EAST Championship returns to Lake Jovita Golf and Country Club in Dade City, Fla. The 2006 BIG EAST Championship was also held at Lake Jovita, with Notre Dame finishing tied with South Florida in third place that year. As was the case in 2006, USF will

UND's Probable Lineup

Name (position)	Year	Hometown
Annie Brophy (3)	Jr.	Spokane, Wash.
Kristin Wetzel (5)	So.	Wading River, N.Y.
Becca Huffer (2)	Fr.	Denver, Colo.
Lisa Maunu (4)	Sr.	St. Thomas, Ontario
So-Hyun Park (1)	So.	Seoul, South Korea

Head Coach: Susan Holt (third season)

Assistant Coach: Kyle Veltri (fourth season)



2009 Notre Dame Women's Golf

serve as the host institution for the 2009 Championship. Current senior captain **Lisa Maunu** appeared in the 2006 event, finishing 27th. She shot a +24 (240) that included an impressive final round minus-one 71.

BIG EAST History

Notre Dame captured the first-ever BIG EAST Championship in 2003 by topping runner-up Miami by 44 strokes. The Irish followed up with another title in 2004, winning by 14 shots over Miami. St. John's took the 2005 tournament, which was shortened from 54 to 18 holes due to poor weather conditions. The Red Storm finished seven strokes ahead of Georgetown. In 2006, Louisville bested runner-up Georgetown by 21 and followed up with a one shot win over Notre Dame in 2007. The two teams were tied after the 54 holes, but the Cardinals prevailed on the first playoff hole. Last year, Notre Dame captured the program's third BIG EAST title, finishing nine strokes ahead of Louisville. Annie Brophy took home medalist honors as she shot three consecutive rounds of 74 for a plus-six 222.

UND's All-Time BIG EAST Finishes

2003 - 1st (941/+77)
2004 - 1st (905/+41)
2005 - 3rd (338/+50)
2006 - 3rd (914/+50)
2007 - 1st (891/+27 - ND lost playoff)
2008 - 1st (899/+35)

UND At The 2008 Championship

Last year, Notre Dame captured the program's third BIG EAST title, finishing nine strokes ahead of Louisville. **Annie Brophy** took home medalist honors as she shot three consecutive rounds of 74 for a 222/+6. Joining Brophy on the all-BIG EAST team were **So-Hyun Park**, **Lisa Maunu** and **Kristin Wetzel**. Park finished two strokes behind Brophy to finish second overall (224/+8), while Maunu and Wetzel finished tied for fourth (227/+11). It marked the second consecutive year that Notre Dame fielded four all-conference performers, as Brophy, **Noriko Nakazaki**, **Julie Kim** and Maunu all finished in the top-10 at the 2007 BIG EAST Championship.

League Honors

The Irish boast three BIG EAST medalists in **Katie Brophy**, **Karen Lotta** and **Annie Brophy**. Katie Brophy tied for first as a freshman at the 2003 tournament, while Lotta did the same at the 2005 event during her senior campaign. Last year Annie Brophy, the younger sister of Katie, captured the title as a sophomore. All told, the Irish have com-

UND's All-BIG EAST Performers

Noriko Nakazaki (2004, 2005, 2006, 2007)
Karen Lotta (2003, 2004, 2005)
Katie Brophy (2003, 2004, 2005)
Annie Brophy (2007, 2008)
Lisa Maunu (2007, 2008)
Shannon Byrne (2003)
Suzie Hayes (2003)
Julie Kim (2007)
Kristin Wetzel (2008)
So-Hyun Park (2008)

combined for 19 all-BIG EAST honors since the tournament began in 2003. **Noriko Nakazaki**, a 2007 Notre Dame graduate, is the program record holder with four all-conference accolades.

Last Time Out

The Irish tied for 14th-place at the Bryan National Collegiate as the team shot a final round 315 (27 over par) on the Champions Course. The upperclassmen led the way for the Irish in the third round as senior captain **Lisa Maunu** and junior **Annie Brophy** each carded plus-six marks of 78.

Maunu and Brophy shot identical 17 over-par scores of 233 for the tournament and the duo finished in a tie for 52nd. For the weekend, Brophy carded a minus five mark on the tournament's 12 par fives to tie for the second best combined score at the event for par five play.

Freshman **Becca Huffer** also scored for the Irish in round three, carding a seven over par-79. With a three round total of 231, Huffer was Notre Dame's best finisher as she finished in a tie for 43rd.

Sophomore **So-Hyun Park** registered a third round score of plus-eight 80 to round out the third round scoring for the Irish. She finished tied for 69th with a plus-21 (237) mark for the tournament. Sophomore **Katie Conway** posted a plus-nine 81 in her final round, giving her a three-day total of 240. The 24-over par mark placed her tied for 76th.

Versus The BIG EAST Field

During the 2008-09 season, the Irish played in tournaments versus South Florida (once) and Louisville on two occasions. In Notre Dame's first tournament of the season on Sept. 14-16, the Irish finished with an +22/886 at the Cougar Classic in Charleston, South Carolina, good for an eighth-place finish. South Florida finished 44 strokes behind the Irish (+66/930) in 20th. The Irish next came up against BIG EAST opposition at the LSU Classic in Baton Rouge, La. on March 13-15. Louisville finished tied for fifth (+6/870), while the Irish were 15 strokes back, finishing in 12th (+21/885). The Irish and Cardinals then met at the Bryan National Collegiate in Greensboro, N.C. on April 3-5. Louisville again finished ahead of the Irish. The Cardinals shot a 910 to finish seventh, while Notre Dame tied for 14th with a 933.

The Sunshine State

The Irish have played all across the state of Florida in recent years, including stops in Bonita Bay, Miami, Orlando, Palm Harbor, Port St. Lucie and Tampa. All-time, only one Sunshine State native has teed it up for the Irish, namely 2001

GolfStat Rankings

1. UCLA
2. Arizona State
3. Virginia
4. USC
5. Oklahoma State
6. Alabama
7. Auburn
8. LSU
9. Purdue
10. North Carolina
11. Wake Forest
12. Duke
13. Pepperdine
14. Georgia
- 15. Louisville**
16. Arkansas
17. Michigan State
18. San Jose
19. Denver
20. Vanderbilt
21. California
22. UC-Irvine
23. Kent State
24. Arizona
25. San Francisco
- 34. Notre Dame**
- 76. South Florida**
- 109. Georgetown**
- 132. Cincinnati**
- 143. St. John's**
- 198. Rutgers**

BIG EAST Teams listed in BOLD
Rankings as of 4.8.09

2009 Notre Dame Women's Golf



2008-09 Irish women's golf: (l-r) Katie Conway, Julie Kim, Lisa Maunu, Becca Huffer, Annie Brophy, So-Hyun Park, Kristin Wetzell, Katie Allare.

graduate **Shane Smith** of St. Petersburg, Fla. Smith served as the Irish team captain for the 1999-2000 and 2000-01 seasons. Current Irish sophomore **So-Hyun Park** played her high school golf at Bradenton Prep in Bradenton, Fla.

Next Up

Selections for the 2009 NCAA Women's Golf Championship will be announced on Monday, April 27. Sixty-three teams will get the invite, as will nine individuals on non-qualifying teams. The team (and individuals) will be divided among three regional sites for NCAA Regional competition, taking place May 7-9. The East Regional will take place at the University of Florida Golf Club in Gainesville, Florida with the University of Florida serving as the host. The West Regional will take place at the Karsten Golf Course in Tempe, Arizona. Arizona State University will serve as the host institution. The Central Regional will be played on the Scarlet Course in Columbus, Ohio; with Ohio State University as the host. The top eight teams from each regional advance to the NCAA Championship, taking place May 19-22 in Owings Mills, Md.

2008-09 Awards & Honors

Becca Huffer (Fr.)

Preseason.....BIG EAST R.O.T.Y. (*Golfdigest.com*)
 Preseason.....Notable Newcomer (*Golfweek*)

So-Hyun Park (So.)

PreseasonTop-50 Players To Watch (*Golf World*)
 March 26BIG EAST Player of the Week

The Last Time...

Notre Dame won the BIG EAST championship	2008
Notre Dame won consecutive BIG EAST championships	2003 & 2004
Notre Dame had a BIG EAST individual champion	2008 (A. Brophy)
Notre Dame had five All-BIG EAST performers	---
Notre Dame had four All-BIG EAST performers	2008
Notre Dame had three All-BIG EAST performers	2004
Notre Dame had two All-BIG EAST performers	2006

Notre Dame's Updated Player Notes



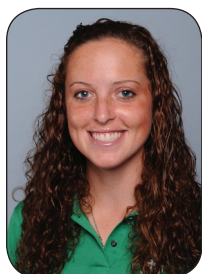
Annie Brophy

Junior - Spokane, Wash. (Gonzaga Prep)

- Played in all nine of Notre Dame's regular season tournaments in 2008-09.
- Carries a 2009 spring stroke average of 77.92 and a 76.52 mark for the 2008-09 year.
- Had all three of her rounds at the Cougar Classic, the Northrop Grumman Regional Challenge and the Bryan national Collegiate counted towards the team score.
- Her second round minus-one 71 at the Heather Farr Memorial helped the Irish card a record low 281-team score for the round.
- She also shot her best three-round total (219/+3) of the year at the Heather Farr.
- Her top finish of the season came at the Lady Northern Invitational, where she finished fourth (75-70-77-222/+6).
- Shot a second round minus-two 70 at the Lady Northern Invitational for the lowest round of her career.
- Her best three round total of the spring (226/+10) came at the LSU Golf Classic.
- Her best round of the spring came as she shot an even par-72 in the third round of the Northrop Grumman Regional Challenge.

Brophy's BIG EAST Finishes

2007	3rd	216 (72-73-71)
2008	1st	222 (74-74-74)



Katie Conway

Sophomore - Wading River, N.Y. (Shoreham-Wading River)

- Played in eight of Notre Dame's regular season tournaments in 2008-09.
- Carries a 2009 spring stroke average of 80.08 and a 78.50 mark for the 2008-09 year.
- Had all three of her rounds at the Lady Northern Invitational count towards the team score.
- Her third round minus-two 70 at the Heather Farr Memorial helped the Irish claim first place and it was the lowest round of her Irish career.
- Her best finish came at the Lady Northern Invitational, where she finished tied for 20th.
- Had her best three-round total at the Heather Farr (76-75-70-221/+5).

Conway's BIG EAST Finish

2008	t-15th	233 (79-77-77)
------	--------	----------------



Becca Huffer

Freshman - Denver, Colo. (Littleton)

- Played in all nine of Notre Dame's regular season tournaments in 2008-09.
- Carries a 2009 spring stroke average of 76.00 and a 75.48 mark for the 2008-09 year.
- Had all three of her rounds counted at the Mary Fossum Invitational, the Heather Farr Memorial, the Landfall Tradition, the Northrop Grumman Regional Challenge, the LSU Golf Classic, the Betsy Rawls Longhorn Invitational and the Bryan National Collegiate.
- Carded the first under-par round of her career with a minus-one 71 in the third round of the Mary Fossum Invitational.
- Her other under-par round came at the LSU Golf Classic, where she turned in a one-under par 71 in the third round.
- Had her best finish at the Lady Northern Invitational, where she finished ninth.
- Her best three round total came at the LSU Classic, where she carded a plus-one mark (72-74-71-217/+1).
- Leads the Irish in rounds counted: 25 of 27 (.926).
- Her second round plus-two 72 at the Heather Farr Memorial helped the Irish card a record low 281 for the round.

Notre Dame's Updated Player Notes



Lisa Maunu

Senior - St. Thomas, Ontario (Parkside Collegiate Institute)

- Played in all nine of Notre Dame's regular season tournaments in 2008-09.
- Carries a 2009 spring stroke average of 78.00 and a 76.59 mark for the 2008-09 year.
- Had all three of her rounds counted at the Cougar Classic, the Mary Fossum Invitational, the Heather Farr Memorial, the LSU Golf Classic, the Betsy Rawls Longhorn Invitational and the Bryan National Collegiate.
- Her second round minus-two 70 at the Heather Farr Memorial helped the Irish card a record low 281 for the round.
- Shot a minus-three 69 in the second round of the Cougar Classic for her lowest round of the season. It was also the second lowest round of her career.
- Leads the Irish with five under-par rounds this season.
- Had her best finish at the Heather Farr Memorial, where she tied for fourth.
- Her lowest 54-hole total came at the Heather Farr Memorial as she shot a minus-five 211 (71-70-70). The minus-five marked the second lowest 54-hole total in program history.
- She also shot a minus-two 214 at the Cougar Classic, giving her two of Notre Dame's three under par tournament totals on the season.

Maunu's BIG EAST Finishes

2006	27th	240 (82-87-71)
2007	t-10th	230 (77-77-76)
2008	t-4th	227 (73-76-78)



So-Hyun Park

Sophomore - Seoul, South Korea (Bradenton Prep - Fla.)

- Played in all nine of Notre Dame's regular season tournaments in 2008-09.
- Carries a 2009 spring stroke average of 76.25 and a 75.48 mark for the 2008-09 year.
- Had all three of her rounds at the Heather Farr Memorial, the Lady Northern Invitational, the Landfall Tradition, the Northrop Grumman Regional Challenge, the LSU Golf Classic and the Betsy Rawls Longhorn Invitational counted towards the team score.
- Had her best finish of the season at the Heather Farr Memorial, finishing tied for fourth-place (70-66-75/-5). It was her
- Her minus-five 211 at the Heather Farr was the lowest 54-hole total of her Irish career (tied with Maunu for second-lowest in program history).
- In the second round of the Heather Farr, she shot a program record-low 66 to help the Irish card a record low 281-team score for the round.

Park's BIG EAST Finish

2008	2nd	224 (74-75-75)
------	-----	----------------



Kristin Wetzel

Junior - Middletown, N.Y. (Hilton Head Prep - S.C.)

- Played in three of Notre Dame's regular season tournaments.
- Carries a 78.79 stroke average for the season.
- Finished tied for 69th (76-76-79-231/+15) at the Cougar Classic.
- Had her best finish of the season at the Mary Fossum Invitational, finishing tied for 36th (79-78-78-235/+19).
- Played as an individual entrant at the Lady Northern Invitational, finishing tied for 54th (81-81-81-243/+27).

Wetzel's BIG EAST Finishes

2007	15th	235 (75-82-78)
2008	t-4th	227 (75-76-76)

2009 Notre Dame Women's Golf

2008-09 Women's Golf Quick Facts

Location	Notre Dame, IN 46556
Founded	1842
Enrollment	8,332 (undergraduate), 11,479 (total)
Nickname	Fighting Irish
Colors	Gold and Blue
Conference	BIG EAST
Home Course	Warren Golf Course
President	Rev. John I. Jenkins, C.S.C.
Athletic Director	Jack Swarbrick
Assistant AD/Golf Admin.	Jim Fraleigh
Athletic Department Phone	(574) 631-6107

Notre Dame Fighting Irish Roster

<u>Name</u>	<u>Cl.</u>	<u>Hometown/Last School</u>
Katie Allare	Fr.	Phoenix, Ariz./Xavier Prep
Annie Brophy**	Jr.	Spokane, Wash./Gonzaga Prep
Katie Conway*	So.	Wading River, N.Y./Shoreham-Wading River
Becca Huffer	Fr.	Denver, Colo./Littleton
Julie Kim	Jr.	Bayside, N.Y./Bayside
Lisa Maunu*** (c)	Sr.	St. Thomas, Ontario/Parkside Collegiate Institute
So-Hyun Park*	So.	Seoul, South Korea/Bradenton Prep (Fla.)
Kristin Wetzel**	Jr.	Middletown, N.Y./Hilton Head Prep (S.C.)

Head Coach: Susan Holt (third season/Ohio State '88)

Assistant Coach: Kyle Veltri (fourth season/St. Mary's College [Ind.] '01)

Volunteer Assistant Coach: Tom Hanlon

Senior Manager: Jason Nowak

(c) – indicates team captain

* - indicates monograms won

Pronunciation Guide

Katie Allare A-lair

Lisa Maunu MON-u

So-Hyun Park So-YUN

Notre Dame Sports Information

Address	112 Joyce Center Notre Dame, IN 46556-5678
Sports Information Fax	574.631.7941
Notre Dame Sports Hotline	574.631.3000
SID Intern/Women's Golf Contact	Dan Colleran
Sports Information Office	574.631.7516
Colleran's Office Phone	574.631.4780
Colleran's Cell Phone	574.532.4151
Colleran's E-mail	dcollera@nd.edu



2008-09 NOTRE DAME WOMEN'S GOLF SCHEDULE AND RESULTS

SPRING 2009

<u>Tournament</u>	<u>Player</u>	<u>Rounds</u>	<u>Total</u>	<u>Finish (Field)</u>
Northrop Grumman Regional Challenge February 9-11, 2009 Palos Verdes, California Palos Verdes Golf Club Par 71 5,912 yards	TEAM So-Hyun Park Becca Huffer Annie Brophy Lisa Maunu Katie Conway	330-321-305 <u>80-76-77</u> 82-78-77 85-83-72 83-85-79 <u>87-84-79</u>	956/+104 233/+20 237/+24 240/+27 247/+34 250/+37	12th (16) T20th (84) T41st T44th T65th T73rd
LSU Golf CClassic March 13-15, 2009 Baton Rouge, La. LSU Golf Club Par 72 6,424 yards	TEAM Becca Huffer So-Hyun Park Lisa Maunu Annie Brophy Katie Conway	296-301-288 72-74-71 74-75-71 74-78-71 <u>76-74-76</u> <u>80-78-75</u>	956/+104 217/+1 220/+4 223/+7 226/+10 233/+17	12th (18) T16th (93) T29th T46th T59th T83rd
Betsy Rawls Longhorn Invitational March 20-22, 2009 Austin, Texas The University of Texas Golf Club Par 72 6,324 yards	TEAM So-Hyun Park Becca Huffer Lisa Maunu Annie Brophy Katie Conway	296-308-311 73-76-76 73-77-77 75-77-81 <u>75-78-83</u> <u>81-80-77</u>	915/+51 225/+9 227/+11 233/+17 236/+20 238/+22	6th (17) T23rd (93) T29th T47th T58th T62nd
Bryan National Collegiate April 3-5, 2009 Greensboro, N.C. The Bryan Park Champions Course Par 72 6,386 yards	TEAM Becc Huffer Annie Brophy Lisa Maunu So-Hyun Park Katie Conway	309-309-315 75-77-79 78-77-78 78-77-78 <u>78-79-80</u> <u>81-78-81</u>	933/+69 231/+15 233/+17 233/+17 237/+21 240/+24	T14th (18) T43rd (96) T52nd T52nd T69th T76th

underlined rounds - not counted toward team scoring



2008-09 NOTRE DAME WOMEN'S GOLF SCHEDULE AND RESULTS

FALL 2008

<u>Tournament</u>	<u>Player</u>	<u>Rounds</u>	<u>Total</u>	<u>Finish (Field)</u>
Cougar Classic September 11-14, 2008 Charleston, South Carolina Yeamans Hall Golf Club Par 72 6,159 yards	TEAM Lisa Maunu Becca Huffer So-Hyun Park Annie Brophy Kristin Wetzel	297-292-297 <u>73-69-72</u> <u>73-71-73</u> <u>80-73-74</u> <u>75-74-78</u> <u>76-76-79</u>	886/+22 214/-2 223/+7 227/+11 227/+11 231/+15	8th (22) T-9th (112) T-37th T-47th T-47th T-69th
Mary Fossum Invitational September 20-21, 2008 East Lansing, Michigan Forest Akers West Golf Club Par 72 6,316 yards	TEAM Becca Huffer So-Hyun Park Annie Brophy Lisa Maunu Kristin Wetzel Katie Conway (I)	310-288-295 80-73-71 <u>74-68-83</u> <u>80-74-71</u> <u>77-73-75</u> <u>79-78-78</u> <u>73-78-81</u>	893/+29 224/+8 225/+9 225/+9 225/+9 235/+19 232/+16	3rd (12) 10th (76) T-11th T-11th T-11th T-36th T-22nd
Heather Farr Memorial September 29-30, 2008 Broomfield, Colorado Omni Interlocken Golf Club Par 72 6,211 yards	TEAM So-Hyun Park Lisa Maunu Annie Brophy Katie Conway Becca Huffer	288-281*-289 70-66*-75 71-70-70 <u>72-71-76</u> <u>76-75-70</u> <u>75-74-74</u>	858/-6* 211/-5 211/-5 219/+3 221/+5 223/+7	1st (20) T-4th (106) T-4th 23rd T-28th T-32nd
Lady Northern Invitational October 18-19, 2008 West Lafayette, Indiana Kampen Golf Course Par 72 6,276 yards	TEAM Annie Brophy Becca Huffer So-Hyun Park Katie Conway Lisa Maunu Kristin Wetzel (I)	299-303-311 <u>75-70-77</u> <u>77-75-76</u> <u>74-78-79</u> <u>75-80-79</u> <u>75-81-83</u> <u>81-81-81</u>	913/+49 222/+6 228/+12 231/+15 234/+18 239/+23 243/+27	3rd (14) 4th (82) 9th T-15th T-20th T-39th T-56th
Landfall Tradition October 24-26, 2008 Wilmington, North Carolina Country Club of Landfall Par 72 6,117 yards	TEAM Becca Huffer So-Hyun Park Katie Conway Annie Brophy Lisa Maunu	326-298-303 82-73-73 <u>79-73-77</u> <u>82-75-79</u> <u>83-77-78</u> <u>89-79-75</u>	927/+63 228/+12 229/+13 236/+20 238/+22 243/+27	7th (12) T-12th (60) 14th T-34th T-39th T-50th

* - program record

(I) - independent entrant

underlined rounds - not counted toward team scoring



2008-09 NOTRE DAME WOMEN'S GOLF CUMULATIVE STATISTICS

2008 FALL STATISTICS (sorted by stroke average)

<u>Player</u>	<u>Events</u>	<u>Top Finish (Field)</u>	<u>*Rds (Count)</u>	<u>Strokes</u>	<u>Best Rd</u>	<u>Best 36</u>	<u>Best 54</u>	<u>Average</u>
So-Hyun Park	5	T-4th (106)	15/15 (13)	1,123	66* (-6)	136 (-8)	211 (-5)	74.87
Becca Huffer	5	9th (82)	15/15 (13)	1,126	71 (-1)	149 (+5)	223 (+7)	75.07
Annie Brophy	5	4th (82)	15/15 (14)	1,131	71 (-1)	143 (-1)	219 (+3)	75.40
Lisa Maunu	5	T-4th (106)	15/15 (11)	1,132	69 (-3)	141 (-3)	211 (-5)	75.47
Katie Conway	4	T-20th (82)	12/9 (6)	923	70 (-2)	151 (+7)	221 (+5)	76.92
Kristin Wetzel	3	T-36th (76)	9/6 (4)	709	76 (+4)	152 (+8)	231 (+15)	78.78
TEAM	5	1st (20)	15	4,477	281 (-7)*	569 (-7)	858 (-6)*	298.47

2009 SPRING STATISTICS (sorted by stroke average)

<u>Player</u>	<u>Events</u>	<u>Top Finish (Field)</u>	<u>*Rds (Count)</u>	<u>Strokes</u>	<u>Best Rd</u>	<u>Best 36</u>	<u>Best 54</u>	<u>Average</u>
Becca Huffer	4	T-16th (93)	12/12 (12)	912	71 (-1)	146 (+2)	217 (+4)	76.00
So-Hyun Park	4	T-20th (84)	12/12 (11)	915	71 (-1)	149 (+5)	220 (+1)	76.25
Annie Brophy	4	T-44th (84)	12/12 (10)	935	72 (+1)	150 (+6)	226 (+7)	77.92
Lisa Maunu	4	T-46th (93)	12/12 (11)	936	71 (-1)	152 (+8)	223 (+10)	78.00
Katie Conway	4	T-62nd (93)	12/12 (6)	961	75 (+3)	158 (+14)	233 (+17)	80.08
TEAM	4	6th (17)	12	4,174	296 (+8)	597 (+21)	915 (+51)	307.42

2008-09 SEASON STATISTICS (sorted by stroke average)

<u>Player</u>	<u>Events</u>	<u>Top Finish (Field)</u>	<u>*Rds (Count)</u>	<u>Strokes</u>	<u>Best Rd</u>	<u>Best 36</u>	<u>Best 54</u>	<u>Average</u>
So-Hyun Park	9	T-4th (106)	27/27 (24)	2,038	66* (-6)	136 (-8)	211 (-5)	75.48
Becca Huffer	9	9th (82)	27/27 (25)	2,038	71 (-1)	149 (+5)	217 (+4)	75.48
Annie Brophy	9	4th (82)	27/27 (24)	2,066	71 (-1)	143 (-1)	219 (+3)	76.52
Lisa Maunu	9	T-4th (106)	27/27 (22)	2,068	69 (-3)	141 (-3)	211 (-5)	76.59
Katie Conway	8	T-20th (82)	24/21 (12)	1,884	70 (-2)	151 (+7)	221 (+5)	78.50
Kristin Wetzel	3	T-36th (76)	9/6 (4)	709	76 (+4)	152 (+8)	231 (+15)	78.79
TEAM	4	1st (20)	27	8,166	281 (-7)*	569 (-7)	858 (-6)*	302.44

NOTRE DAME WOMEN'S GOLF CAREER STATISTICS (sorted by stroke average)

<u>Player</u>	<u>Events</u>	<u>Top Finish (Field)</u>	<u>*Rds (Count)</u>	<u>Strokes</u>	<u>Best Rd</u>	<u>Best 36</u>	<u>Best 54</u>	<u>Average</u>
So-Hyun Park	20	1st (94/106)	62/62 (58)	4,621	66* (-6)	136 (-8)	211 (-5)	74.53
Becca Huffer	9	9th (82)	27/27 (25)	2,038	71 (-1)	149 (+5)	217 (+4)	75.48
Annie Brophy	30	1st (35)	90/90 (77)	6,915	71 (-1)	143 (-1)	216 (E)	76.83
Lisa Maunu	40	1st (103)	119/116 (91)	9,193	66* (-6)	140 (-4)	210* (-6)	77.25
Katie Conway	19	T-9th (60)	56/53 (36)	4,340	70 (-2)	147 (+3)	220 (+4)	77.50
Julie Kim	6	8th (34)	17/14 (11)	1,325	72 (E)	149 (+5)	228 (+12)	77.94
Kristin Wetzel	24	T-4th (35)	72/69 (54)	5,616	71 (-1)	146 (+2)	221 (+5)	78.00

Number after "/" refers to rounds as member of the starting five or six

* - program record



NOTRE DAME WOMEN'S GOLF

2008-09 MISCELLANEOUS STATISTICS

PERCENTAGE OF ROUNDS COUNTED*

<u>Name</u>	<u>Count/Total</u>	<u>Pct.</u>
Becca Huffer	25/27	.926
Annie Brophy	24/27	.889
So-Hyun Park	24/27	.889
Lisa Maunu	22/27	.815
Katie Conway	12/21	.571
Kristin Wetzel	4/6	.667

*excludes rounds as independent entrant

STROKE AVERAGE BY ROUND

<u>Name</u>	<u>1</u>	<u>2</u>	<u>3</u>
Annie Brophy	77.67	75.33	76.56
Becca Huffer	76.56	75.33	74.56
Lisa Maunu	77.22	75.89	76.00
So-Hyun Park	75.78	73.78	76.89
Katie Conway	76.11	73.67	76.89
Kristin Wetzel	79.10	78.33	79.33
TEAM AVERAGES	77.07	75.39	76.71

AVERAGE DIFFERENCE ENTERING FINAL ROUND

<u>Name</u>	<u>Str. Off Lead/Tourn.</u>	<u>Avg.</u>
So-Hyun Park	90/9	10.00
Becca Huffer	103/9	11.44
Annie Brophy	125/9	13.89
Lisa Maunu	126/9	14.00
Katie Conway	139/9	15.44
Kristin Wetzel	59/3	19.67

EVEN & UNDER PAR ROUNDS

<u>Name</u>	<u>Even</u>	<u>Under</u>	<u>Total</u>
Annie Brophy	1	2	3
Becca Huffer	1	2	3
Katie Conway	-	1	1
So-Hyun Park	-	4	4
Lisa Maunu	1	5	6
TEAM TOTALS	3	14	17

AVERAGE STROKES BEHIND MEDALIST

<u>Name</u>	<u>Str. Off Lead/Tourn.</u>	<u>Avg.</u>
So-Hyun Park	120/9	13.33
Becca Huffer	121/9	13.44
Annie Brophy	144/9	16.00
Lisa Maunu	152/9	16.89
Kristin Wetzel	59/3	19.67
Katie Conway	177/8	22.13

AVERAGE TOURNAMENT FINISH

<u>Name</u>	<u>Tourn.</u>	<u>Best Finish</u>	<u>Avg. Finish</u>
So-Hyun Park	9	T-4th	25.78
Becca Huffer	9	9th	26.28
Lisa Maunu	9	T-4th	35.89
Annie Brophy	9	4th	37.45
Katie Conway	8	T-20th	49.75
Kristin Wetzel	3	T-36th	53.00



NOTRE DAME WOMEN'S GOLF

2008-09 INDIVIDUAL TOURNAMENT RESULTS

Katie Allare (Fr., Phoenix, Ariz.)

Annie Brophy (Jr., Spokane, Wash.)

Cougar Classic	227 (75-74-78)	+11	T-47th
Mary Fossum Invitational	225 (80-74-71)	+9	T-11th
Heather Farr Memorial	219 (72-71-76)	+3	T-23rd
Lady Northern Invitational	222 (75-70-77)	+6	4th
The Landfall Tradition	238 (83-77-78)	+22	T-39th
The Northrop Grumman	240 (85-83-72)	+34	T-44th
The LSU Classic	226 (76-74-76)	+10	T-59th
Betsy Rawls Invitational	236 (75-78-83)	+20	T-58th
Bryan National Collegiate	233 (78-77-78)	+17	T-52nd

Katie Conway (So., Wading River, N.Y.)

Mary Fossum Invitational (I)	232 (73-78-81)	+16	T-22nd
Heather Farr Memorial	221 (76-75-70)	+5	T-28th
Lady Northern Invitational	234 (75-80-79)	+18	T-20th
The Landfall Tradition	236 (82-75-79)	+20	T-34th
The Northrop Grumman	250 (87-84-79)	+37	T-73rd
The LSU Classic	233 (80-78-75)	+17	T-83rd
Betsy Rawls Invitational	238 (81-80-77)	+22	T-62nd
Bryan National Collegiate	240 (81-78-81)	+24	T-76th

Becca Huffer (Fr., Denver, Colo.)

Cougar Classic	223 (73-77-73)	+7	T-37th
Mary Fossum Invitational	224 (80-73-71)	+8	10th
Heather Farr Memorial	223 (75-74-74)	+7	T-32nd
Lady Northern Invitational	228 (77-75-76)	+12	9th
The Landfall Tradition	228 (82-73-73)	+12	T-12th
The Northrop Grumman	237 (82-78-77)	+24	T-41st
The LSU Classic	217 (72-74-71)	+1	T-16th
Betsy Rawls Invitational	227 (73-77-77)	+11	T-29th
Bryan National Collegiate	231 (75-77-79)	+15	T-43rd

Julie Kim (Jr., Bayside, N.Y.)

Lisa Maunu (Jr., St. Thomas, Ontario)

Cougar Classic	214 (73-69-72)	-2	T-9th
Mary Fossum Invitational	225 (77-73-75)	+9	T-11th
Heather Farr Memorial	211 (71-70-70)	-5	T-4th
Lady Northern Invitational	231 (75-81-83)	+23	T-39th
The Landfall Tradition	229 (89-79-75)	+27	T-50th
The Northrop Grumman	247 (83-85-79)	+34	T-65th
LSU Classic	223 (74-78-71)	+7	T-46th
Betsy Rawls Invitational	233 (75-77-81)	+17	T-47th
Bryan National Collegiate	233 (78-77-78)	+17	T-52nd

So-Hyun Park (So., Seoul, South Korea)

Cougar Classic	227 (80-73-74)	+11	T-47th
Mary Fossum Invitational	225 (74-68-83)	+9	T-11th
Heather Farr Memorial	211 (70-66-75)	-5	T-4th
Lady Northern Invitational	231 (74-78-79)	+15	T-15th
The Landfall Tradition	229 (79-73-77)	+13	14th
The Northrop Grumman	233 (80-76-77)	+20	T-20th
The LSU Classic	220 (74-75-71)	+4	T-29th
Betsy Rawls Invitational	225 (73-76-76)	+9	T-23rd
Bryan National Collegiate	237 (78-79-80)	+21	T-69th

Kristin Wetzel (So., Middletown, N.Y.)

Cougar Classic	231 (76-76-79)	+15	T-69th
Mary Fossum Invitational	235 (79-78-78)	+19	T-36th
Lady Northern Invitational (I)	243 (81-81-81)	+27	T-54th

underlined rounds - not counted to team score

(I) - competed as an individual entrant



NOTRE DAME WOMEN'S GOLF 2008-09 RECORD VS. OPPONENTS

<u>School</u>	<u>Times Faced</u>	<u>W-L-T</u>		<u>W-L-T</u>	
Alabama	1	0-1-0	Ohio State	4	2-2-0
Arizona State	2	0-2-0	Oklahoma	1	1-0-0
Arizona	1	1-0-0	Penn State	1	1-0-0
Arkansas	3	0-3-0	Pepperdine	1	0-1-0
Baylor	1	0-1-0	Portland State	1	1-0-0
Boise State	1	1-0-0	Purdue	2	0-2-0
BYU	1	1-0-0	Richmond	1	1-0-0
California	1	0-1-0	San Diego State	1	1-0-0
Charleston Southern	1	1-0-0	South Carolina	4	1-3-0
College of Charleston	3	2-1-0	South Florida	1	1-0-0
Colorado	2	1-1-0	Southern California	1	0-1-0
Colorado State	1	1-0-0	Stanford	1	1-0-0
CSU-Long Beach	1	1-0-0	TCU	2	0-2-0
Duke	1	0-1-0	Tennessee	2	1-1-0
Denver	1	0-1-0	Tennessee Chattanooga	1	1-0-0
East Carolina	3	1-2-0	Texas	1	1-0-0
Eastern Michigan	1	1-0-0	Texas A&M	2	2-0-0
Eastern Washington	1	1-0-0	Texas Tech	1	1-0-0
Ferris State	1	1-0-0	Toledo	1	0-1-0
Florida	2	0-2-0	Tulane	2	1-1-0
Florida State	2	1-1-0	Tulsa	2	2-0-0
Fresno State	1	1-0-0	UC Davis	1	1-0-0
Furman	3	3-0-0	UCF	1	1-0-0
Georgia	2	1-1-0	UCLA	1	0-1-0
Georgia State	1	1-0-0	UNC-Greensboro	3	3-0-0
Gonzaga	1	1-0-0	UNC-Wilmington	1	1-0-0
Hawaii	1	1-0-0	Vanderbilt	1	1-0-0
Idaho	1	1-0-0	Virginia	3	0-3-0
Illinois	1	1-0-0	Wake Forest	4	0-4-0
Indiana	1	1-0-0	Weber State	1	1-0-0
Iowa	2	2-0-0	Western Michigan	1	1-0-0
Iowa State	1	1-0-0	Wisconsin	2	2-0-0
Kentucky	1	0-1-0	Wyoming	1	1-0-0
Kent State	1	0-1-0	OVERALL	139	82-57-0
LSU	3	0-3-0			
Louisville	2	0-2-0			
Maryland	1	1-0-0			
Miami	1	1-0-0			
Michigan	3	2-1-0			
Michigan State	4	0-4-0			
Minnesota	2	2-0-0			
Mississippi State	1	1-0-0			
Mississippi	2	2-0-0			
Missouri	1	1-0-0			
Montana State	2	2-0-0			
New Mexico	1	0-1-0			
North Carolina	4	0-4-0			
North Carolina State	3	3-0-0			
North Carolina Wilmington	2	2-0-0			
Northern Colorado	1	1-0-0			
Northwestern	3	3-0-0			