



# NOTRE DAME

## WOMEN'S BASKETBALL

GAME 2

AT WESTERN KENTUCKY

## FIGHTING IRISH MEDIA

## Primary Women's Basketball Contact

<b>Josh Bates</b>	jbates2@nd.edu
@Josh13Bates	574-310-9954

## Secondary Women's Basketball Contact

<b>Megan Golden</b>	mgolden@nd.edu
@Meg_Golden	574-631-2664

## 2017-18 RESULTS

Date	ND Rank	Opp Rank	Opponent	TV	Time (ET)/ Result
N1	-/5		+IUP	N/A	W, 108-40
N11			Mount St. Mary's	ACCN Extra	W, 121-65
N14			at Western Kentucky	Fox College Sports	8 pm
N19		-/17	at Oregon State	Pac-12	2 pm
N24			^vs ETSU	FloHoops	7:30 pm
N25			^vs USF/Wash St	FloHoops	TBD
N26			^vs TBD	FloHoops	TBD
N29		-/23	\$at Michigan	BTN	6 pm
D3		-/1	&at UConn	ESPN	4 pm
D6			Michigan State	ACCN Extra	7 pm
D9			at Penn		1 pm
D17		-/20	DePaul	ACCN Extra	1 pm
D20		-/19	Marquette	ACCN Extra	3 pm
D28			*Syracuse	ACCN Extra	7 pm
D31			*at Wake Forest	ACCN Extra	1 pm
J4		-/24	*Miami	ACCN Extra	7 pm
J7			*at Georgia Tech	ACCN Extra	2 pm
J11		-/10	*at Louisville	ESPN	7 pm
J14			*Boston College	ACCN Extra	1 pm
J18		-/18	Tennessee	ESPN	7 pm
J21			*Clemson	ACCN Extra	1 pm
J25			*at Pittsburgh	ACCN Extra	7 pm
J28		-/14	*at Florida State	ESPN2	4 pm
F1			*North Carolina	ACCN Extra	7 pm
F4		-/12	*at Duke	ESPN2	1 pm
F11			*Georgia Tech	RSN	1 pm
F15			*at Virginia	ACCN Extra	7 pm
F18			*at Boston College	ACCN Extra	1 pm
F22			*Virginia Tech	ACCN Extra	7 pm
F25			*NC State	ESPN2	2 pm
F28			ACC Championships		
M16			NCAA 1st & 2nd Rds		
M23			NCAA Regional Finals		
M30			NCAA Final Four		

+ - Exhibition

^ - Gulf Coast Showcase | Estero, Florida

\$ - ACC/Big Ten Challenge | Ann Arbor, Michigan

&amp; - Jimmy V Classic | Hartford, Connecticut

\* - Atlantic Coast Conference game

national ranks are AP/Coaches Poll

## GAME INFORMATION

	Tuesday, Nov. 14   8:00 pm ET	Purcell Pavilion at the Joyce Center (9,149)
	Fox College Sports	
	Pulse FM 96.9 / 92.1	Bob Nagle (play-by-play)
	Follow the live stats on UND.com	
	@NDWBB	

## THE SERIES

All-Time	ND leads, 1-0	Last: Irish def. WKU, 75-59, at home on 11/13/07
At WKU	N/A	

## THE COACHES

	Head Coach	At School	Overall
ND	Muffet McGraw	766-227 (31st year)	854-268 (36th year)
WKU	Michelle Clark-Heard	131-40 (6th year)	155-72 (8th year)

## COUNTDOWN TO TIP-OFF:

<b>8,104</b>	Average amount of fans last season, which ranked sixth nationally. 8th straight year with an average of 8,000+.
<b>1,000</b>	-Point Club welcomed its 37th member in Arike Ogunbowale on Nov. 11. Up next, Marina Mabrey (931 points)
<b>930</b>	All-time Notre Dame program wins.
<b>195</b>	Consecutive weeks ranked in the AP Poll, including 126 straight weeks in the top-10.
<b>121</b>	Points scored in opener - tied for the second highest point total in Division I WBB over the weekend
<b>62-2</b>	Notre Dame's record in league play since joining the ACC for 2013-14 season.
<b>24</b>	Total conference championships.
<b>22</b>	Straight NCAA Championship appearances - fourth longest streak in the nation and fifth longest all-time.
<b>19</b>	Different All-Americans
<b>8</b>	Elite Elights, including six of the past seven years.
<b>7</b>	Final Four appearances - one-of-five schools in NCAA history to do so.
<b>6</b>	Regular season league championships in a row (2 Big East / 4 ACC)
<b>5</b>	Ring of Honor recipients as 2014 graduate Kayla McBride had her banner raised on Nov. 11
<b>4</b>	Consecutive ACC regular season and tournament title sweeps. If Notre Dame were to secure its fifth straight in 2018, it would set an ACC record.
<b>3</b>	-pointers reigned supreme last season. In fact, the Irish knocked down a record setting 217 treys
<b>2</b>	Preseason All-ACC selections in junior guards Arike Ogunbowale and Marina Mabrey
<b>1</b>	Naismith Memorial Basketball Hall of Famer - Coach McGraw was enshrined in @HoopsHall on Sept. 9, 2017.

## 2017-18 NOTRE DAME ROSTER

No.	Name	Position	Height	Year	Hometown	Previous School
1	Lili Thompson*	G	5-7	Gs.	Mansfield, Texas	Stanford / Timberview
2	Kaitlin Cole	G	5-10	So.	Toledo, Ohio	Sylvania Northview
3	Marina Mabrey*	G	5-11	Jr.	Belmar, N.J.	Manasquan
5	Jackie Young*	G	6-0	So.	Princeton, Ind.	Princeton Community
11	Brianna Turner^	F	6-3	Sr.	Pearland, Texas	Manvel
14	Mychal Johnson^	G	5-7	Sr.	Huntington, W.Va.	Huntington St. Joseph
21	Kristina Nelson	F	6-4	Gs.	Buford, Ga.	Buford
23	Jessica Shepard*	F	6-4	Jr.	Fremont, Neb.	Nebraska / Fremont
24	Arike Ogunbowale*	G	5-8	Jr.	Milwaukee, Wis.	Divine Savior Holy Angels
30	Mikayla Vaughn	C	6-3	Fr.	Philadelphia, Penn.	Paul VI
32	Danielle Patterson	F	6-2	Fr.	Brooklyn, N.Y.	The Mary Louis Academy
33	Kathryn Westbeld	F	6-2	Sr.	Kettering, Ohio	Kettering Fairmont
40	Maureen Butler	F	6-1	Jr.	Livonia, Mich.	Dearborn Divine Child

\* - probable starter

^ - will redshirt 2017-18 season due to ACL injury

Karen & Kevin Keyes Women's Basketball Head Coach	Muffet McGraw	Saint Joseph's '77	31st Season / 36th Overall
Associate Head Coach	Niel Ivey	Notre Dame '00	11th Season
Associate Head Coach	Carol Owens	Northern Illinois '90	18th Season
Associate Coach	Beth Cunningham	Notre Dame '97	6th Season
Director of Operations	Katie Capps	Western Kentucky '02	3rd Season
Video Coordinator	Erica Williamson	Notre Dame '10	2nd Season

## AT THE HELM

Karen and Kevin Keyes head coach Muffet McGraw embarks on her 31st season at the helm of the Irish (766-227) and 36th overall (854-268) as a head coach. McGraw ranks 10th all-time among NCAA Division I coaches in career wins and sixth among active coaches.

McGraw is also just one of six coaches (men's or women's basketball) in NCAA Division I history with 800 wins, seven Final Fours and five NCAA title games. The prestigious list includes Pat Summitt, Geno Auriemma, Duke men's coach Mike Krzyzewski, the late North Carolina men's coach Dean Smith and current North Carolina men's coach Roy Williams.

This past fall, McGraw took her rightful place among the game's elite when she was enshrined into the Naismith Memorial Basketball Hall of Fame, becoming the 32nd woman ever to do so.

## A DYNAMIC DEBUT

Notre Dame's offense flew out of the starting gate in its season opener on Nov. 11, rolling over Mount St. Mary's by the score of 121-65. The 121 points marked the third most points in a single-game in Irish history and most since it scored 120 versus Pittsburgh on Jan. 17, 2012.

The final tally also marked the most in a season opener since Notre Dame defeated Liberty, 113-35, on Nov. 24, 1989. Furthermore, it tied for the second best offensive showing in all of Division I women's basketball the entire

opening weekend, matching Baylor's 121-62 victory over Lamar and only trailing UCLA's 129-69 rout over San Jose State.

## SHEPARD DOUBLE-DOUBLE

Junior transfer Jessica Shepard got the Irish started offensively versus Mount St. Mary's on Nov. 11, accounting for nine of Notre Dame's first 19 points, knocking down five of her first six shots. Shepard ultimately finished with a double-double, notching 18 points and a team-high 11 rebounds.

In her two seasons at Nebraska, Shepard tallied 25 total double-doubles, which already ranked as the fifth best all-time.

## THOMPSON ASSUMES POINT

After eight combined years of stability at the point guard position between Irish greats Skylar Diggins-Smith and Lindsay Allen, Coach McGraw turned to transfer Lili Thompson to take the mantle for the 2017-18 season. In the season opener versus Mount St. Mary's, Thompson nearly netted a double-double with 10 points and eight assists, as the latter tied for the most assists by a Notre Dame player in a season opener over the past 15 years - joining the likes of Diggins-Smith, Allen (2x) and Megan Duffy (2x).

In fact, Thompson's eight assists marked the highest debut of any ACC point guard in a season opener this year.

## PRONUNCIATION

Niele Ivey	knee-ELL
Mychal Johnson	MIKE-el (Michael)
Marina Mabrey	MAY-bree
Arike Ogunbowale	uh-REE-kay
	OH-gun-buh-WALL-ay
Lili Thompson	Lee-Lee
Brianna Turner	bree-ON-uh

## TEAM INFORMATION

Conference	Atlantic Coast
Home Arena (Capacity)	Purcell Pavilion at the Joyce Center (9,149)
Starters Returning/Lost	3/2
Total Returning/Lost	6/5
Newcomers	6
First Season	1977-78
Full Seasons	40
All-Time Record	930-326 (.740)
NCAA Appearances/Record	24 / 56-23 (.709)
First/Last NCAA Appearance	1992 / 2017
ACC Member	2013-14 - present
ACC Regular Season	62-2 (.969)
ACC Tournament	12-0 (1.000)
ACC Championships	4 - 2014-17

## NATIONAL RANKINGS

2017-18 AP TOP 25  
(Week 1)

1. UConn
2. Texas
3. Baylor
4. South Carolina
5. Louisville
6. Notre Dame
7. Mississippi State
8. UCLA
9. Ohio State
10. Oregon
11. Duke
12. West Virginia
13. Tennessee
14. Stanford
15. Maryland
16. Marquette
17. Florida State
18. Oregon State
19. Texas A&M
20. California
21. Oklahoma
22. South Florida
23. Missouri
24. Michigan
25. Kentucky

Others: Arizona State, Western Kentucky, Miami, Florida, Michigan State, Drake, DePaul, Virginia, Iowa, Gonzaga, Alabama, Kansas State, Indiana, Georgia Tech, Oklahoma State, Syracuse, Purdue

2017-18 USA TODAY COACHES  
(PRESEASON)

1. UConn
2. South Carolina
3. Baylor
4. Mississippi State
5. Notre Dame
6. Texas
7. UCLA
8. Ohio State
9. Stanford
10. Louisville
11. Oregon
12. Duke
13. Maryland
14. Florida State
15. West Virginia
16. Missouri
17. Oregon State
18. Tennessee
19. Marquette
20. DePaul
21. Oklahoma
22. South Florida
23. Michigan
24. Miami
25. California

Others: Texas A&M, NC State, Kentucky, Syracuse, Arizona State, Quinnipiac, Gonzaga, Drake, Virginia, Purdue, Kansas State, LSU, Michigan State, Georgia Tech, Florida Gulf Coast, South Dakota State, Temple, Nebraska, Dayton, Indiana, Middle Tennessee, Virginia Tech, UT-Arlington, Elon, Villanova, Boise State



## NCAA NATIONAL RANKINGS

Team Rankings					
Statistic	Nat'l Rank	Conf Rank	Value	National Leader	Value
Assist/Turnover Ratio	4	1	2.78	USC	11.0
Assists/Game	6	1	250	Baylor	31.0
Blocks/Game	6	1	10.0	St. John's / Norfolk State	14.0
Fewest Turnovers	9	1	9	USC	2
FG%	7	1	.584	Baylor	.620
Off. Reb./Game	19	2	22	Savannah State	32
Rebound Margin	12	2	23.0	Elon	43.0
Scoring Margin	6	2	56.0	South Carolina	68.0
Scoring Offense	1	1	121.0		
3PT FG%	18	3	.500	Little Rock	.692
Turnover Margin	9	3	17.00	UMES	29.00
Turnovers/Game	11	1	9.0	USC	2.0
Individual Rankings					
Statistic	Player	Nat'l Rank	Value	National Leader	Value
A/TO Ratio	Lili Thompson	9	8.00	AJ Alix, FSU	12.00
Assists/Game	Lili Thompson	20	8.0	Tyra Buss, Indiana	11.0
Double-Doubles	Jess Shepard	11	1	10 tied with 2	2
FT%	Jackie Young	T1	1.000		
FG%	Lili Thompson	T1	1.000		
Off. Reb./Game	Jess Shepard	12	7	Donasja Scott, Savannah State	11

including a consensus first team choice in 2014, the 2014 ACC Player of the Year and the 2014 NCAA Final Four All-Tournament Team honoree, to name just a few.

When all was said and done, McBride ranked first all-time in career free-throw percentage (.882) and sixth in scoring with her 1,876 career points. The Erie, Pennsylvania, native went on to be drafted No. 3 overall by the San Antonio Stars (now Las Vegas), earning WNBA All-Rookie Team honors in 2014 and was named a WNBA All-Star in 2015.

#### STARTING OFF ON THE RIGHT FOOT

Notre Dame has been nothing short but dominant in its season openers, specifically when opening at home. In fact, the Irish have now won each of their last 23 season openers, stretching back to a loss at No. 25 Seton Hall on Nov. 26, 1994.

The Irish have also won each of its last 18 home season openers, not losing since an 86-70 defeat to No. 3 Penn State on Nov. 22, 1991. The only time Notre Dame has

ever lost a season opener at home to an unranked team came on Nov. 22, 1980, with a 67-60 loss at the hands of South Dakota. For historical perspective, that game came the day after Muffet McGraw made her collegiate assistant coaching debut, helping St. Joseph's to a, 84-57 win over Duke on Hawk Hill.

#### AN ARIKE ACKNOWLEDGEMENT

To kick off the 2017-18 season, espnW listed the top-25 most talented players in the game today with Arike Ogunbowale landing in the No. 15 spot. Analyst Charlie Creme noted:

"Never lacking in confidence with the ball in her hands, Ogunbowale has become one of the most creative and exciting players in the game. She is equal parts deep shooter, innovative slasher and skilled post-up player, making her a difficult matchup for any defender. Ogunbowale was Notre Dame's most accurate 3-point shooter and also got to the free throw line more than anyone on the team last season except forward Brianna Turner."

## CAREER RANKINGS

## 1,000-POINT CLUB WATCH

	Arike Ogunbowale	1,007
	Marina Mabrey	931
	Kathryn Westbeld	798

## FREE-THROW PERCENTAGE

1	Kayla McBride	.882
2	Alicia Ratay	.872
3	Megan Duffy	.859
4	Marina Mabrey	.826

## 3FG PERCENTAGE

1	Alicia Ratay	.476
2	Madison Cable	.456
3	Arike Ogunbowale	.435
4	Kari Hutchinson	.424
5	Marina Mabrey	.406
6	Niele Ivey	.405

#### ARIKE ON ANN MEYERS DRYSDALE WATCH LIST

Junior guard Arike Ogunbowale added to her preseason accolades when the Naismith Memorial Basketball Hall of Fame announced its candidates for the Inaugural Ann Meyers Drysdale Award. The newly minted award will honor the top shooting guard in all of women's NCAA Division I basketball, as Ogunbowale was recognized on the preseason top-20 watch list.

Last season, the Milwaukee native started in 36 of all 37 games played and led the Irish in scoring with her 15.9 points per game. Ogunbowale shot 44.9 percent from the field, finished with 588 total points, knocked down 64 three-pointers and recorded three double-doubles.

By mid-February, the watch list of 20 players for the 2018 Ann Meyers Drysdale Award will be narrowed to just 10. In March, five finalists will be presented to Ms. Drysdale and the Hall of Fame's selection committee. Fans will also have the opportunity to vote for their favorite finalist at [www.hoophallawards.com](http://www.hoophallawards.com).

#### WHO'S THAT GIRL...IT'S JESS!

On Nov. 1, just hours before tip-off of Notre Dame's exhibition, junior transfer Jessica Shepard received word that her waiver had been approved by the NCAA and she was eligible effective immediately.

Shepard was named Big Ten Freshman of the Year in 2016 and claimed a spot on the all-Big Ten team during each of her two seasons with Nebraska. As a sophomore in 2016-17, she averaged 18.6 points per game and 9.8 rebounds per game, totaling 15 double-doubles. Shepard earned a spot on the Naismith Award's Mid-season Top 30 list, a list that also included Notre Dame teammates Arike Ogunbowale and Brianna Turner.

## NOTRE DAME'S RECORD WHEN ...

Day of the Week	
Sunday	0-0
Monday	0-0
Tuesday	0-0
Wednesday	0-0
Thursday	0-0
Friday	0-0
Saturday	1-0
Time of Game	
Day games (before 6 pm local time)	1-0
Night games (6 pm or later local time)	0-0
Location	
Home games	1-0
Road games	0-0
Neutral site	0-0
Halftime Score	
Leading at the half	1-0
Tied at the half	0-0
Trailing at the half	0-0
Individual Scoring	
Two or fewer double-figure scorers	0-0
Three double-figure scorers	0-0
Four double-figure scorers	0-0
Five or more double-figure scorers	1-0
Rebounding margin	
More rebounds than opponent	1-0
Same number of rebounds	0-0
Fewer rebounds than opponent	0-0
Field goal shooting	
Shot higher percentage than opponent	1-0
Shot same percentage as opponent	0-0
Show lower percentage than opponent	0-0
Shot 45% or better	1-0
Shoot less than 45%	0-0
Hold opponent under 40%	0-0
Free-throw margin	
Make more free-throws than opponent	1-0
Make same number of free-throws	0-0
Make fewer free-throws than opponent	0-0
Turnovers	
Commit fewer turnovers	1-0
Commit same number of turnovers	0-0
Commit more turnovers	0-0
Uniform Combinations	
White jerseys with blue trim	0-0
White jerseys with green trim	1-0
Blue jerseys	0-0
Gray jerseys with pink trim	0-0
Green jerseys	0-0

Miscellaneous	
Vs. top-25	0-0
When ranked higher	1-0
When ranked lower	0-0
On commercial tv	0-0
In overtime games	0-0

Margin of Victory	
1-5 points	0-0
6-10 points	0-0
11-15 points	0-0
16-20 points	0-0
21+ points	1-0

Month	
November	1-0
December	0-0
January	0-0
February	0-0
March	0-0

As a freshman, Shepard set a Big Ten record by being named the freshman rookie of the week 10 times en route to her Big Ten Freshman of the Year accolade. Shepard earned two Big Ten Player of the Week awards that season and was the espnW National Player of the Week on Jan. 25, 2016, after recording the first 30-point, 20-rebound game in school history -- scoring 35 points and grabbing 20 boards in a win over Michigan.

**THE FINAL TUNE-UP**

Notre Dame certainly did not mess around in its lone exhibition tune-up, rolling to a 108-40 victory over IUP. All 10 Notre Dame players who appeared in the game tallied at least one point for the Irish, led by the debut of Mikayla Vaughn. The freshman only missed one shot from the field (12-of-13) before finishing with 30 points. The Philadelphia native also collected five blocks and eight rebounds.

The Irish also received a double-double from Jackie Young, as the sophomore tallied 17 points and 11 rebounds. Also joining Vaughn and Young in double-digits were Marina Mabrey and Arike Ogunbowale with 20 and 18 points, respectively.

**POLL POSITION**

The preseason AP Poll placed the Fighting Irish in the all-time familiar spot among the nation's top-10, starting the year at the No. 6 spot. Notre Dame remained at No. 6 in the AP's week one poll. Thus, the Irish have now been ranked in the AP Poll for 195 consecutive weeks, including 126 straight polls inside the top-10. The last time the Irish were out - a No. 11 ranking on Jan. 17, 2011.

Speaking of, Notre Dame has now been ranked in the top-10 for the 224th time, marking the 10th-most AP top-10 appearances all-time.

In addition, the USA Today released its preseason top-25 coaches poll with the Irish landing in the No. 5 spot with 648 points.

The current AP Poll also solidified the fact that Notre Dame's 2017-18 schedule will undoubtedly rank among the top in the country. Currently, the Irish will challenge a total of eight schools ranked inside the top-25, with a potential for 10, and a total of 15 different opponents either ranked or receiving votes, including nine in the ACC.

Fellow ACC schools joining Notre Dame inside the top-25 were No. 5 Louisville, No. 11 Duke and No. 17 Florida State.

**IF IT AIN'T BROKE, DON'T FIX IT**

On Oct. 19, the ACC Blue Ribbon Panel and head coaches' poll were in agreement - Notre Dame returns as the preseason favorite for the 2017-18 season.

For the fourth consecutive year, Notre Dame was recognized as the team to beat in the ACC. The Irish claimed 35 first-place votes and 858 points to claim the top spot. Meanwhile, Louisville (5 first-place votes, 809 points), Duke (10, 799) and Florida State (10, 752) followed in said order.

Since joining the conference for the 2013-14 season, the Irish have posted an impressive 62-2 record in regular season league play.

Last season, the Irish secured their fourth consecutive conference regular season and tournament title sweeps, and if the Irish were to claim their fifth straight in 2018, a new record would be set.

In addition, Ogunbowale and Mabrey received Preseason All-ACC nods for the first time in their respective careers while senior transfer Lili Thompson was named to the Newcomer Watch List.

**TORN APART**

The Notre Dame bench will slightly be more crowded for the 2017-18 season after torn ACL injuries claimed two members in the year 2017.

Starting last March, the Irish lost three-time All-American Brianna Turner to a torn ACL in the NCAA Championships. Later, in September, in a decision to come back stronger and be able to compete in a full season, Turner chose to redshirt the 2017-18 season.

Next, senior guard Mychal Johnson tore her ACL in practice on Oct. 23, just weeks before the start of the 2017-18 season.



[illegible]

Player	2017-18	Career	Streak
Marina Mabrey	1	39	37
Arike Ogunbowale	1	37	26
Jackie Young	1	1	1
Jess Shepard	1	1	1
Lili Thompson	1	1	1
Kathryn Westbeld	0	60	0

Player	2017-18	Career
Marina Mabrey	33-4	35-4
Arike Ogunbowale	33-4	33-4
Jackie Young	1-0	1-0
Jess Shepard	1-0	1-0
Lili Thompson	1-0	1-0
Kathryn Westbeld	0-0	54-6

Fans will have at least six opportunities to catch Notre Dame on ESPN/ESPN2, squaring off with the likes of UConn, Louisville, Tennessee, Florida State, Duke and NC State in the national spotlight.

Meanwhile, three more games appear on ESPN2 this season, including at Florida State on Jan. 28, at Duke on Feb. 4 and Senior Day vs NC State on Feb. 25.

Back by popular demand, the Muffet McGraw Radio Show Presented by TireRack.com returns to O'Rourke's Public House for at least five showings for the 2017-18 season. Be sure to mark your calendars for the following dates: Nov. 20, Dec. 11, Jan. 22, Feb. 12 and Feb. 26.

The show will broadcast live locally on 92.1 Pulse FM and also be available over the internet at WatchND.

Each episode will feature interviews with two current student-athletes, a member of the Irish coaching staff and also a feature on a former player or ND staff member. Fans will have an opportunity to ask questions of Coach McGraw and her guests along with winning prizes.

The Irish knocked down a school record 217 three-pointers last season, besting the previous top mark of 207 set in the 2015-16 season. Collectively Notre Dame shot .395 from beyond the arc, which ranked as the sixth best in school history.

Ultimately, Mabrey's .402 career three-point field goal percentage ranks seventh in ACC history and sixth best at Notre Dame.

Marina Mabrey produced her biggest scoring performances on the biggest stage last season. Of the 10 games in which she scored at least 20 points, nine of those games came either against ACC opponents or during the NCAA Tournament.

Fellow junior Arike Ogunbowale also thrived on the big stage, averaging 22.5 points per game during Notre Dame's NCAA Championship run. The scoring average was top in the nation among players whose team reached at least the Elite Eight.

Ogunbowale dropped a career high 32 points against Ohio State in the Sweet 16, tying for the third-most in a Notre Dame NCAA game. She was later named the Lexington Regional Most Outstanding Player.

### **A GLANCE BACK**

When the curtain closed on the 2016-17 season, the Irish finished 33-4 overall, marking the seventh consecutive 30-win campaign. Notre Dame also continued its dominance within the Atlantic Coast Conference (ACC), compiling a 15-1 mark before sweeping the league's regular season and tournament titles for the fourth straight year.

Notre Dame rode a 17-game winning streak into the NCAA's Elite Eight, which stood as the second-longest active winning streak nationally at game-time, behind only UConn.

After making its 22nd straight appearance in the NCAA Championships (fourth-longest streak in the nation), the Irish fell 76-75 to Stanford in the Elite Eight, missing what would have been its eighth Final Four appearance all-time.

### **ANOTHER 30+ WIN CAMPAIGN**

Notre Dame claimed its 30th win of the season when the Irish beat Duke to win the ACC championship on March 5, 2017. It marked the seventh consecutive 30-win season for Notre Dame and the ninth in school history, joining the 1996-97 and 2000-01 squads.

Nationally, only UConn has a longer active streak of 30-win seasons at 12. Baylor matches the Irish with a streak that began in 2010-11.

The 2010-11 team was the last one to win fewer than 30 of its first 33 games and that squad still stood at a solid 26-7 at that late-season juncture.

Last season marked the 11th year in a row and the 23rd time in the past 24 years in which Notre Dame had won at least 20 games. It also marked the 12th Irish team to win at least 25 games in a season, all coming under Muffet McGraw's tutelage.

The Irish also won at least 10 league games last year. Notre Dame has claimed double-digit league wins in 20 of its 21 years in the BIG EAST and ACC combined, going 8-8 in 2005-06 league play for the lone exception.

### **CONSISTENT WINNERS**

Notre Dame has been one of the best teams in the nation on an annual basis. In fact, over the past six years, only UConn (220) has won more games than Notre Dame's 209. Baylor has claimed 208, while Stanford (186) and Maryland (183) round out the top-five.

### **SHAKE DOWN THE THUNDER**

Notre Dame proved to be one of the best shooting teams in the nation last season, ranking fourth in the country in field goal percentage (.395). The pure shooting led to Notre Dame's 11th national rank in scoring offense at 80.1 points per game, which also ranked as the fourth best average in school history.

Furthermore, Notre Dame became the second team to lead the ACC in field goal percentage four years in a row, joining Duke's eight-year run from 1999-2006.

However, the Irish weren't done there, topping the ACC as a team in assists, assists per game, assist-to-turnover ratio, scoring offense, three-point field goal percentage and fewest turnovers per game.

### **PLENTY OF NEW FACES**

As each season brings in a new crop of freshmen, the 2017-18 campaign will also witness several more new faces. Joining the duo of freshmen, Danielle Patterson and Mikayla Vaughn, will be fifth-year transfer Lili Thompson (Stanford) and junior transfer Jess Shepard (Nebraska). It marked the first time in program history that Coach McGraw welcomed in transfers to boost the roster. Furthermore, adding to the depth of this year's squad, the team took on two walk-on's in junior Maureen Butler and sophomore Kaitlin Cole.

### **HOME COURT ADVANTAGE**

When playing at home, Notre Dame enjoyed its typical home court advantage as provided by its incredibly loyal lime green-clad fans, ranking sixth nationally in average attendance (8,104).

Notre Dame was second nationally for operating at 88.58% of capacity at 9,149 seat Purcell Pavilion at the Joyce Center, not far behind Gonzaga's 93.63%.

This advantage has played itself out particularly notably in conference play. Notre Dame has won a school-record 42 consecutive home conference games, beginning with a 66-47 win over Providence on Feb. 14, 2012, in BIG EAST play.

Notre Dame is 32-0 at Purcell Pavilion in ACC play, going 8-0 in 2013-14, 2014-15, 2015-16 and 2016-17. In fact, the Irish have never lost at home to an (active at game time) ACC team in Muffet McGraw's 30 years at the helm. The last time Notre Dame lost at the Joyce Center to a team representing the ACC was a 69-48 setback against No. 20 Maryland on Jan. 10, 1987.

The Irish outscored foes by an average of 22.5 points per game in 17 home games last season and just 11.6 ppg in 14 road games. Likewise, the Irish saw their rebounding margin shoot up to +9.2 at home from +5.9 on the road and the squad's turnover margin sprang up to a +4.7 at Purcell Pavilion from a +0.6 on opposing home floors.

Last season, Notre Dame picked up four sellout crowds, moving the total to 52 sellouts in history.

### **FAST STARTS KEY**

Notre Dame was at its best this year when getting off to a fast start to games last year. Out of the four quarters of a game, Notre Dame scored the most points (799) and had the widest scoring margin (+219) in the first quarter of any single stanza.

In 37 games last year, Notre Dame only trailed seven times after 10 minutes of play. Not completely by coincidence, those seven games (UConn, NC State, Duke, Syracuse, Purdue, Ohio State and Stanford) included three of the team's four losses.

### **OGUNBOWALE BRINGS HOME MORE GOLD**

This past summer, Arike Ogunbowale not only made the U23 USA team roster for the Four Nations Tournament, but also entered the international competition with the most gold already on the squad with four. Ogunbowale then added more to her collection, leading Team USA to a 3-0 sweep over Canada, Australia and host Japan. Ogunbowale spearheaded the victory over Canada, pouring in a team-high 17 points.

**Leading Scorer**

Arike Ogunbowale	1 (25)
Marina Mabrey	0 (18)
Kathryn Westbeld	0 (2)
Jackie Young	0 (1)

**Leading Rebounder**

Jess Shepard	1 (1)
Kathryn Westbeld	0 (26)
Arike Ogunbowale	0 (11)
Jackie Young	0 (5)
Kristina Nelson	0 (3)

**Leader in Assists**

Lili Thompspon	1 (1)
Marina Mabrey	0 (4)
Kathryn Westbeld	0 (3)
Jackie Young	0 (1)
Kristina Nelson	0 (1)

**Games Started**

Marina Mabrey	1 (39)
Arike Ogunbowale	1 (37)
Jackie Young	1 (1)
Jess Shepard	1 (1)
Lili Thompson	1 (1)

**20-Point Scoring Games**

Opponents	0
Notre Dame	1
Arike Ogunbowale	1 (9)
Marina Mabrey	0 (11)
Jackie Young	0 (1)

**30-Point Scoring Games**

Opponents	0
Notre Dame	0
Arike Ogunbowale	0 (2)

**Jump Balls Controlled**

Opponents	0
Notre Dame	1
Jess Shepard	1-1

**First Score**

Opponents	0
Notre Dame	1
Arike Ogunbowale	1

**Runs of 10 or Better**

Opponents	0
Notre Dame	3

**Largest Halftime Lead**

26 vs Mount St. Mary's, 11/11/17

**Largest Halftime Deficit**

N/A

**Largest Lead**

56 vs Mount St. Mary's, 11/11/17

**Largest Deficit**

N/A

**Largest Deficit Overcome to Win**

N/A

**Largest Lead Given Out in Loss**

N/A

**Most Consecutive Points**

13 vs Mount St. Mary's, 11/11/17

**Most Consecutive Points (Opponent)**

5, Mount St. Mary's, 11/11/17

**Double-Figure Points**

Player	2017-18	Career
Arike Ogunbowale	1	53
Marina Mabrey	1	46
Jackie Young	1	12
Jess Shepard	1	52
Lili Thompson	1	72
Danielle Patterson	1	1

**Double-Figure Rebounds**

Player	2017-18	Career
Jess Shepard	1	26

**5-5-5 Games**

(aka "Stat Sheet Stuffers")

Player	2017-18	Career
--------	---------	--------

**Double-Doubles**

Player	2017-18	Career
Jess Shepard	1	26

**Triple-Doubles**

Player	2017-18	Career
Marina Mabrey	0	1

**Season Point Totals**

Date	Opp.	Paint	OffTO	2ndCh	FBreak	Bench
11/11	CMU	68/24	42/6	25/9	12/0	38/23
11/14	@ WKU					
11/19	@ Oregon St					
11/24	ETSU					
11/25	TBA					
11/26	TBA					
11/29	@ Michigan					
12/3	@ UConn					
12/6	MSU					
12/9	@ Penn					
12/17	DePaul					
12/20	Marquette					
12/28	Syracuse					
12/31	@ Wake					
1/4	Miami					
1/7	@ GT					
1/11	@ Louisville					
1/14	BC					
1/18	Tennessee					
1/21	Clemson					
1/25	@ Pitt					
1/28	@ FSU					
2/1	UNC					
2/4	@ Duke					
2/11	GT					
2/15	@ Virginia					
2/18	@ BC					
2/22	VT					
2/25	NC State					

\* Notre Dame is listed first in each column

**Points in the Paint**

	Total	Average
Notre Dame	68	68.0
Opponents	24.0	24.0

**Points Off Turnovers**

	Total	Average
Notre Dame	42	42.0
Opponents	6	6.0

**Second Chance Points**

	Total	Average
Notre Dame	25	25.0
Opponents	9	9.0

**Fast Break Points**

	Total	Average
Notre Dame	12	12.0
Opponents	0	0.0

**Bench Scoring**

	Total	Average
Notre Dame	38	38.0
Opponents	23	23.0





# LILI THOMPSON

1

5-7 // GRAD // GUARD

MANSFIELD, TEXAS

STANFORD // TIMBERVIEW HS

## UPDATE

• Made her Notre Dame debut vs Mount St. Mary's on Nov. 11, nearly earning a double-double with 10 points and eight assists, as the latter was one shy of her career high.

• Thompson tied the highest assist mark in a season opener (8) over the past 15 years, joining the likes of Lindsay Allen (2x), Skylar Diggins and Megan Duffy (2x).

• Two-time All-Pac-12 (Coaches and Media)

• Pac-12 All-Defensive Honorable Mention (Coaches)

• Two-time Pac-12 All-Academic Honorable Mention

• Averaged 14.7 points per game on 37.5 percent shooting (166-of-443), including a .375 clip from deep (65-of-189) as a junior

• Became the 36th Stanford player to reach 1,000 career points when she scored 12 against Colorado (1/10)

• Sophomore season (2014-15) - became the first Stanford guard since Candice Wiggins in 2007-08 to lead the team in scoring

## SEASON BESTS

Pts: 10 (vs Mount, 11/11/17)  
Rebs: 1 (vs Mount, 11/11/17)  
FGM: 3 (vs Mount, 11/11/17)  
FGA: 4 (vs Mount, 11/11/17)  
3FGM: 1 (vs Mount, 11/11/17)  
3FGA: 1 (vs Mount, 11/11/17)  
FTM: 3 (vs Mount, 11/11/17)  
FTA: 3 (vs Mount, 11/11/17)  
Ast: 8 (vs Mount, 11/11/17)  
Blk: 1 (vs Mount, 11/11/17)  
Stl: 2 (vs Mount, 11/11/17)  
Min: 25 (vs Mount, 11/11/17)

## CAREER BESTS

Pts: 30 (at Washington St, 1/31/16)  
Rebs: 7, 5x (last vs Washington, 1/29/16)  
FGM: 11, 2x (last at Washington St, 1/31/16)  
FGA: 22 (vs Texas, 11/20/14)  
3FGM: 6 (at Hawaii, 11/29/14)  
3FGA: 11, 2x (last vs Missouri St, 11/27/15)  
FTM: 12 (at USC, 1/25/15)  
FTA: 14 (at USC, 1/25/15)  
Ast: 9 (vs Notre Dame, 3/25/16)  
Blk: 2, 4x (last vs Chattanooga, 12/28/15)  
Stl: 4 (at Colorado, 2/9/16)  
Min: 43 (vs Texas, 11/20/14)

## KEY STATISTICS

POINTS	ASSISTS	FG%	STEALS
10.0	8.0	.750	2.0
6TH ON TEAM	LEADS TEAM	T-3RD ON TEAM	T-3RD ON TEAM

## SEASON

1.....	Double-Figure Scoring.....	72
0.....	20+ points .....	12
0.....	30+ points .....	1

## CAREER

## 2017-18 GAME-BY-GAME STATISTICS

Date	Opponent	GS	MIN	FG-A	3P-A	FT-A	RB	PF	A	TO	BL	ST	PTS
11/11	Mount St. Mary's	*	25	3-4	1-1	3-3	0-1-1	1	8	1	1	2	10
11/14	@ Western Ky												
11/19	@ Oregon St												
11/24	vs ETSU												
11/25	TBD												
11/26	TBD												
11/29	@ Michigan												
12/3	@ UConn												
12/6	Mich St												
12/9	@ Penn												
12/17	DePaul												
12/20	Marquette												
12/28	Syracuse												
12/31	@ Wake												
1/4	Miami												
1/7	@ GT												
1/11	@ Louisville												
1/14	BC												
1/18	Tennessee												
1/21	Clemson												
1/25	@ Pitt												
1/28	@ FSU												
2/1	UNC												
2/4	@ Duke												
2/11	Georgia Tech												
2/15	@ Virginia												
2/18	@ BC												
2/22	Virginia Tech												
2/25	NC State												

## THOMPSON'S OVERALL CAREER STATISTICS - NOTRE DAME

Season	gp-gs	min/avg	fg-fga	pct	fg-fga	pct	ft-fga	pct	off	def	tot	avg	pf	fo	ast	to	blk	stl	pts	avg
2017-18	1-1	25/25.0	3-4	.750	1-1	1.000	3-3	1.000	0	1	1	1.0	1	0	8	1	1	2	10	10.0
TOTAL	1-1	25/25.0	3-4	.750	1-1	1.000	3-3	1.000	0	1	1	1.0	1	0	8	1	1	2	10	10.0

## THOMPSON'S OVERALL CAREER STATISTICS - STANFORD

Season	gp-gs	min/avg	Total fg-fga	pct	3-Point fg-fga	pct	F-Throws ft-fga	pct	Rebounds off	def	tot	avg	pf	fo	ast	to	blk	stl	Scoring pts	avg
2013-14	36-33	899/25.0	103-250	.412	46-109	.422	48-65	.738	10	75	85	2.4	66	0	97	61	7	28	300	8.3
2014-15	35-33	1063/30.4	161-394	.409	45-121	.372	99-126	.786	16	90	106	3.0	54	0	81	78	7	30	466	13.3
2015-16	33-30	1020/30.9	166-443	.375	65-189	.344	87-112	.777	22	90	112	3.4	57	2	117	85	6	47	484	14.7
TOTAL	104-96	2982/28.7	430-1087	.396	156-419	.372	234-303	.772	48	255	303	2.9	177	2	295	224	20	105	1250	12.0



# KAITLIN COLE

2

5-10 // SOPHOMORE // GUARD

TOLEDO, OHIO

SYLVANIA NORTHVIEW

## UPDATE

• 1-of-2 walk-ons to make the 2017-18 roster

• Made her collegiate debut vs Mount St. Mary's on Nov. 11, scoring five points on 2-of-4 shooting, including a 1-for-1 day from three-point range. Also picked up her first career steal.

• Played 13 minutes in IUP exhibition. Finished with four points after going 4-for-4 from the free-throw line. Also grabbed three rebounds

## SEASON BESTS

Pts: 5 (vs Mount, 11/11/17)  
Rebs: 2 (vs Mount, 11/11/17)  
FGM: 4 (vs Mount, 11/11/17)  
3FGM: 1 (vs Mount, 11/11/17)  
3FGA: 1 (vs Mount, 11/11/17)  
FTM: 1 (vs Mount, 11/11/17)  
FTA: 1 (vs Mount, 11/11/17)  
Ast: 1 (vs Mount, 11/11/17)  
Blk: 1 (vs Mount, 11/11/17)  
Stl: 1 (vs Mount, 11/11/17)  
Min: 9 (vs Mount, 11/11/17)

## CAREER BESTS

Pts: 5 (vs Mount, 11/11/17)  
Rebs: 2 (vs Mount, 11/11/17)  
FGM: 4 (vs Mount, 11/11/17)  
3FGM: 1 (vs Mount, 11/11/17)  
3FGA: 1 (vs Mount, 11/11/17)  
FTM: 1 (vs Mount, 11/11/17)  
FTA: 1 (vs Mount, 11/11/17)  
Ast: 1 (vs Mount, 11/11/17)  
Blk: 1 (vs Mount, 11/11/17)  
Stl: 1 (vs Mount, 11/11/17)  
Min: 9 (vs Mount, 11/11/17)

## SEASON

0 ..... Double-Figure Scoring ..... 0  
0 ..... Double-Figure Rebounds ..... 0  
0 ..... 20+ points ..... 0

## CAREER

## 2017-18 GAME-BY-GAME STATISTICS

Date	Opponent	GS	MIN	FG-A	3P-A	FT-A	RB	PF	A	TO	BL	ST	PTS
11/11	Mount St. Mary's		9	2-4	1-1	0-0	0-0-0	1	0	1	0	1	5
11/14	@ Western Ky												
11/19	@ Oregon St												
11/24	vs ETSU												
11/25	TBD												
11/26	TBD												
11/29	@ Michigan												
12/3	@ UConn												
12/6	Mich St												
12/9	@ Penn												
12/17	DePaul												
12/20	Marquette												
12/28	Syracuse												
12/31	@ Wake												
1/4	Miami												
1/7	@ GT												
1/11	@ Louisville												
1/14	BC												
1/18	Tennessee												
1/21	Clemson												
1/25	@ Pitt												
1/28	@ FSU												
2/1	UNC												
2/4	@ Duke												
2/11	Georgia Tech												
2/15	@ Virginia												
2/18	@ BC												
2/22	Virginia Tech												
2/25	NC State												

## COLE'S OVERALL CAREER STATISTICS

			Total		3-Point		F-Throws		Rebounds											Scoring	
Season	gp-gs	min/avg	fg-fga	pct	fg-fga	pct	ft-fta	pct	off	def	tot	avg	pf	fo	ast	to	blk	stl	pts	avg	
2017-18	1-0	9/9.0	2-4	.500	1-1	1.000	0-0	.000	0	0	0	0.0	1	0	0	1	0	1	5	5.0	
TOTAL	1-0	9/9.0	2-4	.500	1-1	1.000	0-0	.000	0	0	0	0.0	1	0	0	1	0	1	5	5.0	



# MARINA MABREY

3

5-11 // JUNIOR // GUARD

BELMAR, N.J.

MANASQUAN HS

## UPDATE

- Preseason All-ACC selection

- Tallied 18 points vs Mount St. Mary's on Nov. 11, leading the attack from beyond the arc, knocking down 3-of-5 from three. Also co-led the team in steals with three.

## SEASON BESTS

Pts: 18 (vs Mount, 11/11/17)  
 Rebs: 4 (vs Mount, 11/11/17)  
 FGM: 7 (vs Mount, 11/11/17)  
 FGA: 12 (vs Mount, 11/11/17)  
 3FGM: 3 (vs Mount, 11/11/17)  
 3FGA: 5 (vs Mount, 11/11/17)  
 FTM: 1 (vs Mount, 11/11/17)  
 FTA: 2 (vs Mount, 11/11/17)  
 Ast: 3 (vs Mount, 11/11/17)  
 Blk: 1 (vs Mount, 11/11/17)  
 Stl: 3 (vs Mount, 11/11/17)  
 Min: 26 (vs Mount, 11/11/17)

## CAREER BESTS

Pts: 29 (at Clemson, 2/16/17)  
 Rebs: 6, 5x (last at Toledo, 12/18/16)  
 FGM: 11, 2x (last at Clemson, 2/16/17)  
 FGA: 18 (vs Stanford, 3/26/17)  
 3FGM: 4, 5x (last vs Ohio State, 3/24/17)  
 3FGA: 11 (vs Virginia, 1/29/17)  
 FTM: 10 (at Valparaiso, 11/23/15)  
 FTA: 12 (vs Virginia, 1/29/17)  
 Ast: 10 (at Valparaiso, 11/23/15)  
 Blk: 3 (vs Duke, 3/5/17)  
 Stl: 12 (at Valparaiso, 11/23/15)  
 Min: 41 (vs Purdue, 3/19/17)

## KEY STATISTICS

POINTS	3PT FG/GAME	FG MADE/GAME	STEALS
18.0	3.0	7.0	3.0
T-2ND ON TEAM	LEADS TEAM	T-2ND ON TEAM	CO-LEADS TEAM

## SEASON

1.....	Double-Figure Scoring.....	46
0.....	Double-Figure Rebounds.....	1
0.....	Double-Figure Assists.....	1
0.....	Triple-Doubles.....	1
0.....	20+ points.....	10

## CAREER

## 2017-18 GAME-BY-GAME STATISTICS

Date	Opponent	GS	MIN	FG-A	3P-A	FT-A	RB	PF	A	TO	BL	ST	PTS
11/11	Mount St. Mary's	*	26	7-12	3-5	1-2	3-1-4	1	3	0	1	3	18
11/14	@ Western Ky												
11/19	@ Oregon St												
11/24	vs ETSU												
11/25	TBD												
11/26	TBD												
11/29	@ Michigan												
12/3	@ UConn												
12/6	Mich St												
12/9	@ Penn												
12/17	DePaul												
12/20	Marquette												
12/28	Syracuse												
12/31	@ Wake												
1/4	Miami												
1/7	@ GT												
1/11	@ Louisville												
1/14	BC												
1/18	Tennessee												
1/21	Clemson												
1/25	@ Pitt												
1/28	@ FSU												
2/1	UNC												
2/4	@ Duke												
2/11	Georgia Tech												
2/15	@ Virginia												
2/18	@ BC												
2/22	Virginia Tech												
2/25	NC State												

## MABREY'S OVERALL CAREER STATISTICS

			Total		3-Point		F-Throws		Rebounds												Scoring	
Season	gp-gs	min/avg	fg-fga	pct	fg-fga	pct	ft-fga	pct	off	def	tot	avg	pf	fo	ast	to	blk	stl	pts	avg		
2015-16	35-2	662/18.9	127-247	.514	34-75	.453	85-104	.817	22	76	98	2.8	71	0	69	70	12	53	373	10.7		
2016-17	37-36	1023/27.6	195-414	.471	75-196	.383	75-89	.843	33	77	110	3.0	68	0	92	54	18	55	540	14.6		
2017-18	1-1	26/26.0	7-12	.583	3-5	.600	1-2	.500	3	1	4	4.0	1	0	3	0	1	3	18	18.0		
TOTAL	73-39	1711/23.4	329-673	.489	112-276	.406	161-195	.826	58	154	212	2.9	140	0	164	124	31	111	931	12.8		

## MABREY'S CONFERENCE CAREER STATISTICS

			Total		3-Point		F-Throws		Rebounds											Scoring	
Season	gp-gs	min/avg	fg-fga	pct	fg-fga	pct	ft-fga	pct	off	def	tot	avg	pf	fo	ast	to	blk	stl	pts	avg	
2015-16	16-0	277/17.3	49-114	.430	16-41	.390	27-33	.818	7	37	44	2.8	30	0	24	34	5	21	141	8.8	
2016-17	16-16	449/28.1	85-176	.483	36-93	.387	36-43	.837	10	40	50	3.1	30	0	45	23	5	21	242	15.1	
TOTAL	32-16	726/22.7	134-290	.462	52-134	.388	63-76	.829	17	77	94	2.9	60	0	69	57	10	42	383	12.0	



# JACKIE YOUNG

# 5

6-0 // SOPHOMORE // GUARD

PRINCETON, IND.

PRINCETON COMMUNITY HS

## UPDATE

• After producing 11 double-digit scoring games last year, Young opened this season with 16 points vs Mount St. Mary's. Went a perfect 6-for-6 from the free-throw line and played the most minutes.

## SEASON BESTS

Pts: 16 (vs Mount, 11/11/17)  
Rebs: 6 (vs Mount, 11/11/17)  
FGM: 5 (vs Mount, 11/11/17)  
FGA: 12 (vs Mount, 11/11/17)  
3FGM: 1 (vs Mount, 11/11/17)  
3FGA: 6 (vs Mount, 11/11/17)  
FTM: 6 (vs Mount, 11/11/17)  
FTA: 6 (vs Mount, 11/11/17)  
Ast: 2 (vs Mount, 11/11/17)  
Blk: 2 (vs Mount, 11/11/17)  
Stl: 31 (vs Mount, 11/11/17)  
Min: 31 (vs Mount, 11/11/17)

## CAREER BESTS

Pts: 20 (vs Valparaiso, 12/4/16)  
Rebs: 12 (at Syracuse, 2/9/17)  
FGM: 8 (vs Valparaiso, 12/4/16)  
FGA: 12 (vs Mount, 11/11/17)  
3FGM: 3 (vs Valparaiso, 12/4/16)  
3FGA: 4 (vs Valparaiso, 12/4/16)  
FTM: 7 (vs Pittsburgh, 1/12/17)  
FTA: 7 (vs Pittsburgh, 1/12/17)  
Ast: 5 (vs Georgia Tech, 2/12/17)  
Blk: 1, 9x (last vs Purdue, 3/19/17)  
Stl: 6 (vs Valparaiso, 12/4/16)  
Min: 38 (vs Purdue, 3/19/17)

## KEY STATISTICS

POINTS	REBOUNDS	FT%	FT MADE/GAME
16.0	6.0	1.000	6.0
4TH ON TEAM	4TH ON TEAM	LEADS TEAM	LEADS TEAM

## SEASON

1..... Double-Figure Scoring..... 12  
0..... 20+ points ..... 1

## CAREER

## 2017-18 GAME-BY-GAME STATISTICS

Date	Opponent	GS	MIN	FG-A	3P-A	FT-A	RB	PF	A	TO	BL	ST	PTS
11/11	Mount St. Mary's	*	31	5-12	0-1	6-6	4-2-6	1	2	1	0	2	16
11/14	@ Western Ky												
11/19	@ Oregon St												
11/24	vs ETSU												
11/25	TBD												
11/26	TBD												
11/29	@ Michigan												
12/3	@ UConn												
12/6	Mich St												
12/9	@ Penn												
12/17	DePaul												
12/20	Marquette												
12/28	Syracuse												
12/31	@ Wake												
1/4	Miami												
1/7	@ GT												
1/11	@ Louisville												
1/14	BC												
1/18	Tennessee												
1/21	Clemson												
1/25	@ Pitt												
1/28	@ FSU												
2/1	UNC												
2/4	@ Duke												
2/11	Georgia Tech												
2/15	@ Virginia												
2/18	@ BC												
2/22	Virginia Tech												
2/25	NC State												

## YOUNG'S OVERALL CAREER STATISTICS

Season	gp-gs	min/avg	Total		3-Point		F-Throws		Rebounds				Scoring					
			fg-fga	pct	fg-fga	pct	ft-fga	pct	off	def	tot	avg	pf	fo	ast	to	blk	stl
2016-17	33-0	707/21.4	88-190	.463	11-29	.379	53-66	.803	66	86	152	4.6	77	0	47	48	9	27
2017-18	1-1	31/31.0	5-12	.417	0-1	.000	6-6	1.000	4	2	6	6.0	1	0	2	1	0	2
TOTAL	34-1	738/21.7	93-202	.460	11-30	.367	59-72	.819	70	88	158	4.6	78	0	49	49	9	29

## YOUNG'S CONFERENCE CAREER STATISTICS

Season	gp-gs	min/avg	Total		3-Point		F-Throws		Rebounds				Scoring					
			fg-fga	pct	fg-fga	pct	ft-fga	pct	off	def	tot	avg	pf	fo	ast	to	blk	stl
2016-17	16-0	336/21.0	37-92	.402	2-9	.222	28-30	.933	42	39	81	5.1	35	0	20	19	4	12
TOTAL	16-0	336/21.0	37-92	.402	2-9	.222	28-30	.933	42	39	81	5.1	35	0	20	19	4	12



# KRISTINA NELSON 21

6-4 // GRAD // FORWARD

BUFORD, GA.

BUFORD HS

**SEASON BESTS**

Pts: 4 (vs Mount, 11/11/17)  
 Rebs: 3 (vs Mount, 11/11/17)  
 FGM: 2 (vs Mount, 11/11/17)  
 FGA: 3 (vs Mount, 11/11/17)  
 3FGM:  
 3FGA:  
 FTM:  
 FTA:  
 Ast:  
 Blk: 3 (vs Mount, 11/11/17)  
 Stl: 2 (vs Mount, 11/11/17)  
 Min: 11 (vs Mount, 11/11/17)

**CAREER BESTS**

Pts: 13 (vs Pittsburgh, 1/12/17)  
 Rebs: 9 (vs Central Michigan, 11/11/16)  
 FGM: 5 (vs Wake Forest, 2/18/16)  
 FGA: 10 (vs Central Michigan, 11/11/16)  
 3FGM:  
 3FGA:  
 FTM: 7 (vs Pittsburgh, 1/12/17)  
 FTA: 10 (vs Pittsburgh, 1/12/17)  
 Ast: 5 (vs Wake Forest, 1/5/17)  
 Blk: 4 (vs Valparaiso, 12/4/16)  
 Stl: 2, 4x (last vs Purdue, 3/19/17)  
 Min: 24 (vs Valparaiso, 12/4/16)

**KEY STATISTICS**

POINTS	REBOUNDS	FG%	BLOCKS
4.0	3.0	.667	3.0
		5TH IN ON TEAM	CO-LEADS TEAM

**UPDATE**

• In just 11 minutes of play, Nelson came one block shy of her career high, tallying three vs Mount St. Mary's on Nov. 11. Nelson also recorded four points and three rebounds.

**SEASON**

0..... Double-Figure Scoring.....3

**CAREER****2017-18 GAME-BY-GAME STATISTICS**

Date	Opponent	GS	MIN	FG-A	3P-A	FT-A	RB	PF	A	TO	BL	ST	PTS
11/11	Mount St. Mary's	11	2-3	0-0	0-0	1-2-3	2	0	0	3	2	4	
11/14	@ Western Ky												
11/19	@ Oregon St												
11/24	vs ETSU												
11/25	TBD												
11/26	TBD												
11/29	@ Michigan												
12/3	@ UConn												
12/6	Mich St												
12/9	@ Penn												
12/17	DePaul												
12/20	Marquette												
12/28	Syracuse												
12/31	@ Wake												
1/4	Miami												
1/7	@ GT												
1/11	@ Louisville												
1/14	BC												
1/18	Tennessee												
1/21	Clemson												
1/25	@ Pitt												
1/28	@ FSU												
2/1	UNC												
2/4	@ Duke												
2/11	Georgia Tech												
2/15	@ Virginia												
2/18	@ BC												
2/22	Virginia Tech												
2/25	NC State												

**NELSON'S OVERALL CAREER STATISTICS**

Season	gp-gs	min/avg	Total		3-Point		F-Throws		Rebounds				Scoring			
			fg-fga	pct	fg-fga	pct	ft-fa	pct	off	def	tot	avg	pf	fo	ast	to
2013-14	32-0	129/4.0	28-50	.560	0-0	.000	9-17	.529	9	21	30	0.9	39	1	7	17
2015-16	31-0	259/8.4	37-75	.493	0-0	.000	13-22	.591	29	44	73	2.4	45	0	17	31
2016-17	34-0	386/11.4	49-115	.426	0-0	.000	21-34	.618	33	67	100	2.9	69	2	28	50
2017-18	1-0	11/11.0	2-3	.667	0-0	.000	0-0	.000	1	2	3	3.0	2	0	0	3
TOTAL	98-0	785/8.0	116-243	.477	0-0	.000	43-73	.589	72	134	206	2.1	155	3	52	98

**NELSON'S CONFERENCE CAREER STATISTICS**

Season	gp-gs	min/avg	Total		3-Point		F-Throws		Rebounds				Scoring			
			fg-fga	pct	fg-fga	pct	ft-fa	pct	off	def	tot	avg	pf	fo	ast	to
2013-14	14-0	48/3.4	9-23	.391	0-0	.000	2-4	.500	4	8	12	0.9	11	0	1	4
2015-16	15-0	126/8.4	12-30	.400	0-0	.000	5-10	.500	14	21	35	2.3	18	0	9	17
2016-17	14-0	138/9.9	20-41	.488	0-0	.000	12-19	.632	13	20	33	2.4	21	0	9	20
TOTAL	43-0	312/7.3	41-94	.436	0-0	.000	19-33	.576	31	49	80	1.9	50	0	19	41





# JESSICA SHEPARD

# 23

6-4 // JUNIOR // FORWARD

FREMONT, NEB.

NEBRASKA // FREMONT HS

## UPDATE

- Waiver approved by NCAA - eligible to play for the 2017-18 season
- Produced a double-double (18 points / 11 rebounds) in season-opening win over Mount St. Mary's on Nov. 11. Shepard accounted for none of Notre Dame's first 19 points
- A two-time All-Big Ten selection and the 2016 Big Ten Freshman of the Year
- Completed her two-year stint at Nebraska with 1,112 points and 550 rebounds. Her scoring total was the highest by a Husker in history for freshman/sophomore seasons combined.
- Her 25 double-doubles already ranked as the fifth best all-time at Nebraska
- Shattered the Nebraska freshman scoring record with 574 points

## SEASON BESTS

Pts: 18 (vs Mount, 11/11/17)  
 Rebs: 11 (vs Mount, 11/11/17)  
 FGM: 7 (vs Mount, 11/11/17)  
 FGA: 11 (vs Mount, 11/11/17)  
 3FGM: 3  
 3FGA: 4  
 FTM: 4 (vs Mount, 11/11/17)  
 FTA: 7 (vs Mount, 11/11/17)  
 Ast: 3 (vs Mount, 11/11/17)  
 Blk:  
 Stl:  
 Min: 19 (vs Mount, 11/11/17)

## CAREER BESTS

Pts: 35, 2x (last vs Michigan, 1/24/16)  
 Rebs: 20 (vs Michigan, 1/24/16)  
 FGM: 13, 2x (last vs Michigan, 1/24/16)  
 FGA: 27 (vs Ohio State, 2/16/17)  
 3FGM: 2, 8x (last vs Illinois, 3/1/17)  
 3FGA: 6 (vs Illinois, 1/15/17)  
 FTM: 11 (vs Northern Arizona, 12/19/15)  
 FTA: 20, 2x (last vs Michigan State, 2/26/17)  
 Ast: 6 (vs Wisconsin, 1/27/16)  
 Blk: 3 (vs NC State, 12/3/15)  
 Stl: 4 (vs Northern Arizona, 12/19/15)  
 Min: 42 (vs Michigan State, 2/26/17)

## KEY STATISTICS

POINTS	REBOUNDS	Double-Doubles	O-REB
<b>18.0</b>	<b>11.0</b>	<b>1</b>	<b>7.0</b>
T-2ND ON TEAM	LEADS TEAM	LEADS TEAM	LEADS TEAM

## SEASON

1..... Double-Figure Scoring.....	52
0..... 20+ points.....	30
0..... 30+ points.....	3
1..... Double-Figure Rebounds.....	26
1..... Double-Doubles.....	26

## CAREER

## 2017-18 GAME-BY-GAME STATISTICS

Date	Opponent	GS	MIN	FG-A	3P-A	FT-A	RB	PF	A	TO	BL	ST	PTS
11/11	Mount St. Mary's	*	19	7-11	0-0	4-7	11	1	3	2	0	0	18
11/14	@ Western Ky												
11/19	@ Oregon St												
11/24	vs ETSU												
11/25	TBD												
11/26	TBD												
11/29	@ Michigan												
12/3	@ UConn												
12/6	Mich St												
12/9	@ Penn												
12/17	DePaul												
12/20	Marquette												
12/28	Syracuse												
12/31	@ Wake												
1/4	Miami												
1/7	@ GT												
1/11	@ Louisville												
1/14	BC												
1/18	Tennessee												
1/21	Clemson												
1/25	@ Pitt												
1/28	@ FSU												
2/1	UNC												
2/4	@ Duke												
2/11	Georgia Tech												
2/15	@ Virginia												
2/18	@ BC												
2/22	Virginia Tech												
2/25	NC State												

## SHEPARD'S OVERALL CAREER STATISTICS - NOTRE DAME

			Total		3-Point		F-Throws		Rebounds										Scoring	
Season	gp-gs	min/avg	fg-fga	pct	fg-fga	pct	ft-fga	pct	off	def	tot	avg	pf	fo	ast	to	blk	stl	pts	avg
2017-18	1-1	19/19.0	7-11	.636	0-0	.000	4-7	.571	7	4	11	11.0	1	0	3	2	0	0	18	18.0
TOTAL	1-1	19/19.0	7-11	.636	0-0	.000	4-7	.571	7	4	11	11.0	1	0	3	2	0	0	18	18.0

## SHEPARD'S OVERALL CAREER STATISTICS - NEBRASKA

			Total		3-Point		F-Throws		Rebounds											Scoring	
Season	gp-gs	min/avg	fg-fga	pct	fg-fga	pct	ft-fta	pct	off	def	tot	avg	pf	fo	ast	to	blk	stl	pts	avg	
2015-1	31-29	884/28.5	228-447	.510	0-2	.000	118-203	.581	96	170	266	8.6	65	1	59	108	20	19	574	18.5	
2016-1	29-29	897/30.9	206-505	.408	28-89	.315	98-176	.557	69	215	284	9.8	75	3	54	102	7	15	538	18.6	
TOTAL	60-58	1781/29.7	434-952	.456	28-91	.308	216-379	.570	165	385	550	9.2	140	4	113	210	27	34	1112	18.5	



# ARIKE OGUNBOWALE 24

5-8 // JUNIOR // GUARD

MILWAUKEE, WIS.

DIVINE SAVIOR HOLY ANGELS

## UPDATE

- Ann Meyers Drysdale Award Top-20 Watch List
- Named the 15th best player by espnW heading into 2017-18 season
- Preseason All-ACC selection
- After registering seven 20+ point performances last season, Ogunbowale already gets her first for 2017-18 in season opener vs Mount St. Mary's on Nov. 11, leading the team with 21 points on 8-of-14 shooting.
- Became the 37th member of Notre Dame's 1,000-point club in Nov. 11 opener vs The Mount, reaching the milestone on a fast-break layup to end the third quarter.

## SEASON BESTS

Pts: 21 (vs Mount, 11/11/17)  
 Rebs: 7 (vs Mount, 11/11/17)  
 FGM: 8 (vs Mount, 11/11/17)  
 FGA: 14 (vs Mount, 11/11/17)  
 3FGM: 1 (vs Mount, 11/11/17)  
 3FGA: 4 (vs Mount, 11/11/17)  
 FTM: 4 (vs Mount, 11/11/17)  
 FTA: 6 (vs Mount, 11/11/17)  
 Ast: 4 (vs Mount, 11/11/17)  
 Blk: 3 (vs Mount, 11/11/17)  
 Stl: 25 (vs Mount, 11/11/17)  
 Min: 25 (vs Mount, 11/11/17)

## CAREER BESTS

Pts: 32 (vs Ohio State, 3/24/17)  
 Rebs: 10, 3x (last vs RMU, 3/17/17)  
 FGM: 12, 2x (last vs Ohio State, 3/24/17)  
 FGA: 22 (vs Ohio State, 3/24/17)  
 3FGM: 5, 5x (last vs Duke, 3/5/17)  
 3FGA: 9, 2x (last vs Duke, 3/5/17)  
 FTM: 8, 2x (last vs Purdue, 3/19/17)  
 FTA: 10, 2x (last at TCU, 12/12/15)  
 Ast: 6 (at Virginia Tech, 2/2/17)  
 Blk: 1, 8x (last vs Purdue, 3/19/17)  
 Stl: 4, 2x (last at Boston College, 1/19/17)  
 Min: 40 (vs Purdue, 3/19/17)

## KEY STATISTICS

Points	REBOUNDS	FG MADE/GAME	ASSISTS
21.0	7.0	8.0	4.0
LEADS TEAM	T-2ND ON TEAM	LEADS TEAM	2ND ON TEAM

## SEASON

1..... Double-Figure Scoring.....	53
1..... 20+ points .....	9
0..... 30+ points .....	2
0..... Double-Doubles .....	3

## CAREER

## 2017-18 GAME-BY-GAME STATISTICS

Date	Opponent	GS	MIN	FG-A	3P-A	FT-A	RB	PF	A	TO	BL	ST	PTS
11/11	Mount St. Mary's	*	25	8-14	1-4	4-6	1-6-7	0	4	2	0	3	21
11/14	@ Western Ky												
11/19	@ Oregon St												
11/24	vs ETSU												
11/25	TBD												
11/26	TBD												
11/29	@ Michigan												
12/3	@ UConn												
12/6	Mich St												
12/9	@ Penn												
12/17	DePaul												
12/20	Marquette												
12/28	Syracuse												
12/31	@ Wake												
1/4	Miami												
1/7	@ GT												
1/11	@ Louisville												
1/14	BC												
1/18	Tennessee												
1/21	Clemson												
1/25	@ Pitt												
1/28	@ FSU												
2/1	UNC												
2/4	@ Duke												
2/11	Georgia Tech												
2/15	@ Virginia												
2/18	@ BC												
2/22	Virginia Tech												
2/25	NC State												

## OGUNBOWALE'S OVERALL CAREER STATISTICS

Season	gp-gs	min/avg	Total fg-fga	pct	3-Point fg-fga	pct	F-Throws ft-fta	pct	Rebounds off	def	tot	avg	pf	fo	ast	to	blk	stl	Scoring pts	avg
2015-16	35-0	676/19.3	143-330	.433	18-46	.391	94-131	.718	48	71	119	3.4	60	0	41	69	3	22	398	11.4
2016-17	37-36	1087/29.4	217-483	.449	64-141	.454	90-123	.732	41	135	176	4.8	68	0	69	57	8	43	588	15.9
2017-18	1-1	25/25.0	8-14	.571	1-4	.250	4-6	.667	1	6	7	7.0	0	0	4	2	0	3	21	21.0
TOTAL	73-37	1788/24.5	368-827	.445	83-191	.435	188-260	.723	90	212	302	4.1	128	0	114	128	11	68	1007	13.8

## OGUNBOWALE'S CONFERENCE CAREER STATISTICS

Season	gp-gs	min/avg	Total fg-fga	pct	3-Point fg-fga	pct	F-Throws ft-fta	pct	Rebounds off	def	tot	avg	pf	fo	ast	to	blk	stl	Scoring pts	avg
2015-16	16-0	337/21.1	74-161	.460	11-26	.423	43-56	.768	20	43	63	3.9	27	0	20	39	3	8	202	12.6
2016-17	16-16	459/28.7	85-193	.440	28-61	.459	37-56	.661	13	67	80	5.0	26	0	38	27	4	17	235	14.7
TOTAL	32-16	796/24.9	159-354	.449	39-87	.448	80-112	.714	33	110	143	4.5	53	0	58	66	7	25	437	13.7



# MIKAYLA VAUGHN

# 30

6-3 // FRESHMAN // CENTER

PHILADELPHIA, PENN.

PAUL VI

## UPDATE

• Made her debut vs Mount St. Mary's on Nov. 11, recording nine points on 4-of-9 shooting. Reeled in the second most rebounds with seven.

• Led the Irish in scoring with 30 points in IUP exhibition. Only missed one shot from the field, going 12-of-13. Also collected eight rebounds and five blocks.

## SEASON BESTS

Pts: 9 (vs Mount, 11/11/17)  
Rebs: 7 (vs Mount, 11/11/17)  
FGM: 4 (vs Mount, 11/11/17)  
FGA: 9 (vs Mount, 11/11/17)  
3FGM: 3  
3FGA: 3  
FTM: 1 (vs Mount, 11/11/17)  
FTA: 3 (vs Mount, 11/11/17)  
Ast: 3 (vs Mount, 11/11/17)  
Blk: 3 (vs Mount, 11/11/17)  
Stl: 1 (vs Mount, 11/11/17)  
Min: 22 (vs Mount, 11/11/17)

## CAREER BESTS

Pts: 9 (vs Mount, 11/11/17)  
Rebs: 7 (vs Mount, 11/11/17)  
FGM: 4 (vs Mount, 11/11/17)  
FGA: 9 (vs Mount, 11/11/17)  
3FGM: 3  
3FGA: 3  
FTM: 1 (vs Mount, 11/11/17)  
FTA: 3 (vs Mount, 11/11/17)  
Ast: 3 (vs Mount, 11/11/17)  
Blk: 3 (vs Mount, 11/11/17)  
Stl: 1 (vs Mount, 11/11/17)  
Min: 22 (vs Mount, 11/11/17)

## KEY STATISTICS

POINTS	REBOUNDS	O-REB	MINUTES
9.0	7.0	3.0	22.0
7TH ON TEAM	T-2ND ON TEAM	3RD ON TEAM	5TH ON TEAM

## SEASON

0..... Double-Figure Scoring.....0  
0..... Double-Figure Rebounds.....0  
0..... 20+ points .....0

## CAREER

## 2017-18 GAME-BY-GAME STATISTICS

Date	Opponent	GS	MIN	FG-A	3P-A	FT-A	RB	PF	A	TO	BL	ST	PTS
11/11	Mount St. Mary's		22	4-9	0-0	1-3	3-4-7	3	3	1	3	1	9
11/14	@ Western Ky												
11/19	@ Oregon St												
11/24	vs ETSU												
11/25	TBD												
11/26	TBD												
11/29	@ Michigan												
12/3	@ UConn												
12/6	Mich St												
12/9	@ Penn												
12/17	DePaul												
12/20	Marquette												
12/28	Syracuse												
12/31	@ Wake												
1/4	Miami												
1/7	@ GT												
1/11	@ Louisville												
1/14	BC												
1/18	Tennessee												
1/21	Clemson												
1/25	@ Pitt												
1/28	@ FSU												
2/1	UNC												
2/4	@ Duke												
2/11	Georgia Tech												
2/15	@ Virginia												
2/18	@ BC												
2/22	Virginia Tech												
2/25	NC State												

## VAUGHN'S OVERALL CAREER STATISTICS

Season	gp-gs	min/avg	Total		3-Point		F-Throws		Rebounds				Scoring			
			fg-fga	pct	fg-fga	pct	ft-fta	pct	off	def	tot	avg	pf	fo	ast	to
2017-18	1-0	22/22.0	4-9	.444	0-0	.000	1-3	.333	3	4	7	7.0	3	0	3	1
TOTAL	1-0	22/22.0	4-9	.444	0-0	.000	1-3	.333	3	4	7	7.0	3	0	3	1



# DANIELLE PATTERSON 32

6-2 // FRESHMAN // FORWARD

BROOKLYN, NEW YORK

THE MARY LOUIS ACADEMY

## UPDATE

• Made her collegiate debut vs Mount St. Mary's on Nov. 11, earning double-digit points (11) after going a perfect 3-for-3 from the field. Also went 5-for-8 from the free-throw line.

## SEASON BESTS

Pts: 11 (vs Mount, 11/11/17)  
Rebs: 4 (vs Mount, 11/11/17)  
FGM: 3 (vs Mount, 11/11/17)  
FGA: 3 (vs Mount, 11/11/17)  
3FGM:  
3FGA:  
FTM: 5 (vs Mount, 11/11/17)  
FTA: 8 (vs Mount, 11/11/17)  
Ast:  
Blk: 2 (vs Mount, 11/11/17)  
Stl: 1 (vs Mount, 11/11/17)  
Min: 16 (vs Mount, 11/11/17)

## CAREER BESTS

Pts: 11 (vs Mount, 11/11/17)  
Rebs: 4 (vs Mount, 11/11/17)  
FGM: 3 (vs Mount, 11/11/17)  
FGA: 3 (vs Mount, 11/11/17)  
3FGM:  
3FGA:  
FTM: 5 (vs Mount, 11/11/17)  
FTA: 8 (vs Mount, 11/11/17)  
Ast:  
Blk: 2 (vs Mount, 11/11/17)  
Stl: 1 (vs Mount, 11/11/17)  
Min: 16 (vs Mount, 11/11/17)

## KEY STATISTICS

POINTS	REBOUNDS	FREE THROWS MADE	FREE THROWS ATT
11.0	4.0	5.0	8.0
5TH ON TEAM	T-5TH ON TEAM	2ND ON TEAM	LEADS TEAM

## SEASON

1..... Double-Figure Scoring..... 1  
0..... Double-Figure Rebounds..... 0  
0..... 20+ points ..... 0

## CAREER

## 2017-18 GAME-BY-GAME STATISTICS

Date	Opponent	GS	MIN	FG-A	3P-A	FT-A	RB	PF	A	TO	BL	ST	PTS
11/11	Mount St. Mary's		16	3-3	0-0	5-8	2-2-4	1	0	0	2	1	11
11/14	@ Western Ky												
11/19	@ Oregon St												
11/24	vs ETSU												
11/25	TBD												
11/26	TBD												
11/29	@ Michigan												
12/3	@ UConn												
12/6	Mich St												
12/9	@ Penn												
12/17	DePaul												
12/20	Marquette												
12/28	Syracuse												
12/31	@ Wake												
1/4	Miami												
1/7	@ GT												
1/11	@ Louisville												
1/14	BC												
1/18	Tennessee												
1/21	Clemson												
1/25	@ Pitt												
1/28	@ FSU												
2/1	UNC												
2/4	@ Duke												
2/11	Georgia Tech												
2/15	@ Virginia												
2/18	@ BC												
2/22	Virginia Tech												
2/25	NC State												

## PATTERSON'S OVERALL CAREER STATISTICS

Season	gp-gs	min/avg	Total		3-Point		F-Throws		Rebounds				Scoring			
			fg-fga	pct	fg-fga	pct	ft-fta	pct	off	def	tot	avg	pf	fo	ast	to
2017-18	1-0	16/16.0	3-3	1.000	0-0	.000	5-8	.625	2	2	4	4.0	1	0	0	2
TOTAL	1-0	16/16.0	3-3	1.000	0-0	.000	5-8	.625	2	2	4	4.0	1	0	0	2



# KATHRYN WESTBELD 33

6-2 // SENIOR // FORWARD

KETTERING, OHIO

KETTERING FAIRMONT

## UPDATE

• After a limited preseason, Westbeld played 10 minutes in season opener vs Mount St. Mary's on Nov. 11, notching 10 points on 3-of-4 shooting. Also reeled in four rebounds and dished out two assists.

## SEASON BESTS

Pts: 6 (vs Mount, 11/11/17)  
Rebs: 4 (vs Mount, 11/11/17)  
FGM: 3 (vs Mount, 11/11/17)  
FGA: 4 (vs Mount, 11/11/17)  
3FGM: 1  
3FGA: 1  
FTM: 1  
FTA: 1  
Ast: 2 (vs Mount, 11/11/17)  
Blk: 0  
Stl: 0  
Min: 10 (vs Mount, 11/11/17)

## CAREER BESTS

Pts: 17 (at Virginia Tech, 1/29/15)  
Rebs: 14 (at TCU, 12/12/15)  
FGM: 8 (at Virginia Tech, 1/29/15)  
FGA: 14 (at Virginia Tech, 1/29/15)  
3FGM: 2, 3x (last vs Florida State, 2/26/17)  
3FGA: 3 (vs Florida State, 2/26/17)  
FTM: 6 (vs Quinnipiac, 11/25/14)  
FTA: 9 (vs Quinnipiac, 11/25/14)  
Ast: 6 (at Syracuse, 2/19/17)  
Blk: 2, 5x (last at Miami, 1/8/17)  
Stl: 4, 3x (last vs TCU, 11/26/16)  
Min: 38 (vs UCLA, 11/28/15)

## KEY STATISTICS

Points	FG%	REBOUNDS	D-REB
6.0	.750	4.0	3.0
8TH ON TEAM	3RD ON TEAM	T-5TH ON TEAM	4TH ON TEAM

## SEASON

0	Double-Figure Scoring	34
0	Double-Figure Rebounds	7
0	Double-Doubles	4

## CAREER

## 2017-18 GAME-BY-GAME STATISTICS

Date	Opponent	GS	MIN	FG-A	3P-A	FT-A	RB	PF	A	TO	BL	ST	PTS
11/11	Mount St. Mary's		10	3-4	0-0	0-0	1-3-4	3	2	1	0	0	6
11/14	@ Western Ky												
11/19	@ Oregon St												
11/24	vs ETSU												
11/25	TBD												
11/26	TBD												
11/29	@ Michigan												
12/3	@ UConn												
12/6	Mich St												
12/9	@ Penn												
12/17	DePaul												
12/20	Marquette												
12/28	Syracuse												
12/31	@ Wake												
1/4	Miami												
1/7	@ GT												
1/11	@ Louisville												
1/14	BC												
1/18	Tennessee												
1/21	Clemson												
1/25	@ Pitt												
1/28	@ FSU												
2/1	UNC												
2/4	@ Duke												
2/11	Georgia Tech												
2/15	@ Virginia												
2/18	@ BC												
2/22	Virginia Tech												
2/25	NC State												

## WESTBELD'S OVERALL CAREER STATISTICS

			Total		3-Point		F-Throws		Rebounds											Scoring	
Season	gp-gs	min/avg	fg-fga	pct	fg-fga	pct	ft-fga	pct	off	def	tot	avg	pf	fo	ast	to	blk	stl	pts	avg	
2014-15	39-0	676/17.3	100-190	.526	7-17	.412	54-76	.711	62	109	171	4.4	73	1	64	67	10	40	261	6.7	
2015-16	33-33	682/20.7	114-216	.528	1-7	.143	32-42	.762	65	119	184	5.6	54	0	66	50	12	22	261	7.9	
2016-17	32-27	759/23.7	121-206	.587	4-18	.222	24-34	.706	65	105	170	5.3	48	1	76	47	12	30	270	8.4	
2017-18	1-0	10/10.0	3-4	.750	0-0	.000	0-0	.000	1	3	4	4.0	3	0	2	1	0	0	6	6.0	
TOTAL	105-60	2127/20.3	338-616	.549	12-42	.286	110-152	.724	193	336	529	5.0	178	2	208	165	34	92	798	7.6	

## WESTBELD'S CONFERENCE CAREER STATISTICS

			Total		3-Point		F-Throws		Rebounds								Scoring			
Season	gp-gs	min/avg	fg-fga	pct	fg-fga	pct	ft-fga	pct	off	def	tot	avg	pf	fo	ast	to	blk	stl	pts	avg
2014-15	16-0	274/17.1	51-89	.573	1-6	.167	23-27	.852	25	35	60	3.8	28	0	28	33	3	19	126	7.9
2015-16	14-14	270/19.3	37-81	.457	0-5	.000	8-10	.800	31	54	85	6.1	23	0	30	18	4	10	82	5.9
2016-17	12-8	265/22.1	50-75	.667	2-7	.286	5-7	.714	23	23	46	3.8	13	0	31	17	3	9	107	8.9
TOTAL	42-22	809/19.3	138-245	.563	3-18	.167	36-44	.818	79	112	191	4.5	64	0	89	68	10	38	315	7.5





MAUREEN BUTLER 40

6-1 // JUNIOR // FORWARD  
LIVONIA, MICH.  
DEARBORN DIVINE CHILD

SEASON BESTS		CAREER BESTS	
Pts:	3 (vs Mount, 11/11/17)	Pts:	3 (vs Mount, 11/11/17)
Rebs:	1 (vs Mount, 11/11/17)	Rebs:	1 (vs Mount, 11/11/17)
FGM:	1 (vs Mount, 11/11/17)	FGM:	1 (vs Mount, 11/11/17)
FGA:	1 (vs Mount, 11/11/17)	FGA:	1 (vs Mount, 11/11/17)
3FGM:		3FGM:	
3FGA:		3FGA:	
FTM:	1 (vs Mount, 11/11/17)	FTM:	1 (vs Mount, 11/11/17)
FTA:	2 (vs Mount, 11/11/17)	FTA:	2 (vs Mount, 11/11/17)
Ast:		Ast:	
Blk:		Blk:	
Stl:		Stl:	
Min:	6 (vs Mount, 11/11/17)	Min:	6 (vs Mount, 11/11/17)

UPDATE

- 1-of-2 walk-ons to make the 2017-18 roster
- Made her collegiate debut in Mount St. Mary's opener, tallying three points (1-1 FG) and one rebound in six minutes
- Played seven minutes in IUP exhibition. Went 1-for-2 from the free-throw line and reeled in one rebound

SEASON	CAREER
0..... Double-Figure Scoring.....	0
0..... Double-Figure Rebounds.....	0
0..... 20+ points .....	0

2017-18 GAME-BY-GAME STATISTICS

Date	Opponent	GS	MIN	FG-A	3P-A	FT-A	RB	PF	A	TO	BL	ST	PTS
11/11	Mount St. Mary's		6	1-1	0-0	1-2	0-1-1	2	0	0	0	0	3
11/14	@ Western Ky												
11/19	@ Oregon St												
11/24	vs ETSU												
11/25	TBD												
11/26	TBD												
11/29	@ Michigan												
12/3	@ UConn												
12/6	Mich St												
12/9	@ Penn												
12/17	DePaul												
12/20	Marquette												
12/28	Syracuse												
12/31	@ Wake												
1/4	Miami												
1/7	@ GT												
1/11	@ Louisville												
1/14	BC												
1/18	Tennessee												
1/21	Clemson												
1/25	@ Pitt												
1/28	@ FSU												
2/1	UNC												
2/4	@ Duke												
2/11	Georgia Tech												
2/15	@ Virginia												
2/18	@ BC												
2/22	Virginia Tech												
2/25	NC State												

BUTLER'S OVERALL CAREER STATISTICS

Season	gp-gs	min/avg	Total		3-Point		F-Throws		Rebounds										Scoring	
			fg-fga	pct	fg-fga	pct	ft-fta	pct	off	def	tot	avg	pf	fo	ast	to	blk	stl	pts	avg
2017-18	1-0	6/6.0	1-1	1.000	0-0	.000	1-2	.500	0	1	1	1.0	2	0	0	0	0	0	3	3.0
TOTAL	1-0	6/6.0	1-1	1.000	0-0	.000	1-2	.500	0	1	1	1.0	2	0	0	0	0	0	3	3.0

## LAST TIME NOTRE DAME ...

## SCORING

Player scored 25 points  
 Player scored 30 points  
 Player scored 35 points  
 Player scored 40 points  
 Player came off bench and scored 20 points  
 Two players scored 20 points  
 Three players scored 20 points  
 Two players scored 25 points  
 Player scored 25 points/consecutive games  
 None in double figures  
 One in double figures  
 Six in double figures  
 Seven in double figures  
 Eight in double figures  
 ND scored 50 points/half  
 ND scored 55 points/half  
 ND scored 60 points/half  
 ND scored 50 points in both halves  
 ND scored 100 points/game  
 ND scored 100 points/home game  
 ND scored 100 points/neutral site  
 ND scored 100 points/conference game  
 ND scored fewer than 15 points/half  
 ND scored fewer than 20 points/half  
 ND scored fewer than 50 points/game

## FIELD GOAL SHOOTING

Player made every shot from the field (min. 7)  
 ND shot 55 percent/game  
 ND shot 55 percent/consecutive games  
 ND shot 60 percent/game  
 ND shot 65 percent/game  
 ND shot 70 percent/game  
 ND shot below 25 percent/game  
 ND shot below 30 percent/game  
 ND shot below 35 percent/game  
 ND shot below 35 percent/game and won  
 ND shot 55 percent/half  
 ND shot 60 percent/half  
 ND shot 65 percent/half  
 ND shot 70 percent/half  
 ND shot below 25 percent/half  
 ND shot below 30 percent/half

## THREE-POINT SHOOTING

Player made 4 three-pointers/half  
 Player made 5 three-pointers/half  
 Player made 5 three-pointers  
 Player made 6 three-pointers  
 Player made 7 three-pointers  
 Player made 8 three-pointers  
 Player attempted 10 three-pointers  
 ND made 10 three-pointers  
 ND did not make a three-pointer  
 ND attempted 20 three-pointers  
 ND shot 60 percent 3FG (min. 5 att.)

## FREE-THROW SHOOTING

Player made 10 free-throws  
 Player made 15 free-throws  
 Player attempted 15 free-throws  
 Player made 10 for 10 or better  
 ND shot 90 percent (min. 10 att.)  
 ND shot below 50 percent (min. 10 att.)  
 ND made 30 free-throws  
 ND made fewer than five FTs  
 ND attempted 40 free-throws  
 ND attempted fewer than five FTs

See 30 points  
 Arike Ogunbowale (32) vs. Ohio State, 3/24/17 (@ Lexington, Ky.)  
 See 40 points  
 Jewell Loyd (41) at DePaul, 12/10/14  
 Jackie Young (20), vs. Valparaiso, 12/4/16  
 Arike Ogunbowale (25) & Marina Mabrey (20) vs. Stanford, 3/26/17 (@ Lexington, Ky.)  
 Danielle Green (28), Sheila McMillen (26), Ruth Riley (23) vs. West Virginia, 1/7/99  
 Jewell Loyd (26) & Kayla McBride (25) vs. Duke, 3/9/14 (@ Greensboro, N.C.)  
 Jewell Loyd (34 vs. Tennessee, 1/19/15; 29 vs. Georgia Tech, 1/22/15) at Seton Hall, 2/8/04  
 Brianna Turner (25) vs. Duke, 1/26/17  
 Arike Ogunbowale (21), Jess Shepard (18), Marina Mabrey (18), Jackie Young (16), Danielle Patterson (11) and Lili Thompson (10), vs. Mount St. Mary's, 11/11/17  
 See eight in double figures  
 Devereaux Peters (20), Natalie Achonwa (19), Kaila Turner (14), Natalie Novosel (13), Skylar Diggins (11), Brittany Mallory (11), Kayla McBride (11) and Markisha Wright (11) vs. Pittsburgh, 1/17/12  
 See 60 points  
 See 60 points  
 61 (1st half) vs. Mount St. Mary's, 11/11/17  
 56 (1st) & 56 (2nd) vs. Central Michigan, 11/11/16  
 121 vs. Mount St. Mary's, 11/11/17  
 121 vs. Mount St. Mary's, 11/11/17  
 100 vs. Duquesne, 12/1/13 (@ Toronto, Ontario)  
 104 vs. Boston College, 1/11/15  
 11 (1st half) at West Virginia, 1/13/08  
 19 (1st half) at Connecticut, 1/16/10  
 44 at Connecticut, 3/8/10

Taya Reimer (8-8) vs. Louisville, 2/23/15  
 58.4 (45-77) vs. Mount St. Mary's, 11/11/17  
 62.1 (36-58) vs. DePaul, 12/9/15; 55.0 (33-60) at TCU, 12/12/15;  
 59.0 (36-61) at Saint Joseph's (Pa.), 12/21/15  
 60.0 (39-65) vs. Wake Forest, 1/5/17  
 see 70 percent/game  
 70.2 (40-57) at Mercer, 12/30/11  
 24.5 (13-53) at West Virginia, 1/13/08  
 29.7 (22-74) vs. Connecticut, 4/7/13 (@ New Orleans, La.)  
 33.3 (21-63) vs. Connecticut, 4/7/15 (@ Tampa, Fla.)  
 34.8 (23-66) vs. South Florida, 3/10/13 (@ Hartford, Conn.)  
 See 60 percent  
 61.1 (22-36), 2nd half vs. Mount St. Mary's, 11/11/17  
 68.2 (15-22), 2nd half at Toledo, 12/18/16  
 71.4 (30-42), 1st half vs. Valparaiso, 12/4/16  
 24.0 (6-25), 1st half at Miami, 1/8/15  
 29.1 (7-24), 2nd half at Georgia Tech, 1/2/17

Arike Ogunbowale (1st half) vs. Virginia, 1/29/17  
 Michaela Mabrey (1st half) at Boston College, 2/8/15  
 Arike Ogunbowale vs. Duke, 3/5/17 (@ Conway, S.C.)  
 Michaela Mabrey vs. Syracuse, 1/21/16  
 Alicia Ratay at Providence, 2/16/03  
 Sheila McMillen vs. St. John's, 2/28/98 (@ Piscataway, N.J.)  
 Marina Mabrey (11) vs. Virginia, 1/29/17  
 12 vs. Ohio State, 3/24/17 (@ Lexington, Ky.)  
 vs. Saint Joseph's (Pa.), 12/21/14  
 21 vs. Stanford, 3/26/17 (@ Lexington, Ky.)  
 62.5 (5-8) at Tennessee, 1/16/17

Marina Mabrey (10) vs. Virginia, 1/29/17  
 Jewell Loyd (15) at DePaul, 12/10/14  
 Brianna Turner (16) at North Carolina, 1/15/15  
 12-12 by Natalie Novosel vs. South Florida, 2/25/12  
 95.0 (19-20) vs. Ohio State, 3/24/17 (@ Lexington, Ky.)  
 36.4 (4-11) at NC State, 12/29/16  
 31 (attempted 46) vs. UCLA, 11/28/15 (@ Freeport, Bahamas)  
 4 (attempted 7) vs. Wake Forest, 1/5/17  
 46 (made 31) vs. UCLA, 11/28/15 (@ Freeport, Bahamas)  
 2 (made 2) at Connecticut, 3/8/10

## REBOUNDS

Player had 15 rebounds  
 Player had 20 rebounds  
 Two players had double-figure rebounds  
 Three players had double-figure rebounds  
 ND had 50 rebounds  
 ND had 20 offensive rebounds  
 ND had 25 offensive rebounds  
 ND had 30 offensive rebounds

## DOUBLE-DOUBLES

Points & rebounds  
 Points & rebounds/consecutive games  
 Points & rebounds/3 consecutive games  
 Points & rebounds/4 consecutive games  
 Points & rebounds/5 consecutive games  
 Points & assists  
 Rebounds & assists  
 Points & assists/consecutive games  
 Two players had double-doubles  
 Three players had double-doubles  
 15 points and 15 rebounds  
 20 points and 10 rebounds  
 20 points and 20 rebounds

## TRIPLE DOUBLES (only six in school history)

Lindsay Allen (11p/11r/12a) at Chattanooga, 12/27/16  
 Marina Mabrey (18p/10a/12s) at Valparaiso, 11/23/15  
 Skylar Diggins (17p/10r/10a) at DePaul, 2/24/13  
 Skylar Diggins (22p/10r/11a) vs. Maryland, 3/27/12 (@ Raleigh, N.C.)  
 Sara Liebscher (17p/12r/10a) vs. Detroit, 2/15/90  
 Mary Gavin (11p/14a/10s) vs. Marquette, 1/31/87

## ASSISTS

Player had 10 assists  
 Player had 10 assists/consecutive games  
 Player had 15 assists  
 ND had 30 assists  
 ND had fewer than 10 assists  
 ND had fewer than 5 assists

## BLOCKED SHOTS

Player blocked 5 shots  
 Player blocked 6 shots  
 Player blocked 7 shots  
 Player blocked 10 shots  
 ND blocked 10 shots  
 ND blocked 15 shots  
 ND blocked 0 shots

## STEALS

Player had 5 steals  
 Player had 10 steals  
 ND had 20 steals

## TURNOVERS

ND committed 25 or more  
 ND committed 25 or more and won  
 ND committed 30 or more  
 ND committed 10 or fewer  
 ND committed 10 or fewer/consecutive games  
 ND committed 5 or fewer

Brianna Turner (18) at North Carolina, 1/15/15  
 Natalie Achonwa (20) vs. South Florida, 3/10/13 (@ Hartford, Conn.)  
 Arike Ogunbowale (10) and Brianna Turner (10) vs. Robert Morris, 3/17/17  
 Jewell Loyd (12), Madison Cable (11) and Taya Reimer (11) at DePaul, 12/10/14  
 50 vs. Mount St. Mary's, 11/11/17  
 22 vs. Mount St. Mary's, 11/11/17  
 28 vs. Connecticut, 4/7/13 (@ New Orleans, La.)  
 30 vs. Longwood, 12/28/11

Jess Shepard (18/11) vs. Mount St. Mary's, 11/11/17  
 Brianna Turner (24/12) at North Carolina, 1/26/17; (25/12) vs. Duke, 1/26/17  
 Natalie Achonwa (11/14) at Iowa, 3/26/13; (17/10) vs. Kansas, 3/31/13 (@ Norfolk, Va.); vs. Duke (17/13), 4/2/13 (@ Norfolk, Va.)  
 Jacqueline Batteast (14/11) vs. Virginia Tech, 1/10/04; (23/11) vs. Connecticut, 1/13/04; (22/10) at West Virginia, 1/17/04; (12/10) at Syracuse, 1/21/04  
 Jacqueline Batteast (20/10) vs. Western Michigan, 12/12/01; (11/12) vs. Marquette, 12/22/01; (23/10) at Rice, 12/28/01; (25/14) vs. DePaul, 12/31/01; (12/13) at Miami (Fla.), 1/2/02  
 Marina Mabrey (18/10) at Valparaiso, 11/23/15  
 Lindsay Allen (11/10) vs. Virginia 1/29/17  
 Niele Ivey (12/10) at Valparaiso, 11/17/00; (14/11) vs. Arizona, 11/20/00  
 Brianna Turner (13p/10r) and Arike Ogunbowale (15p/10r) vs. Robert Morris, 3/17/17  
 Jewell Loyd (41p/12r), Madison Cable (20p/11r) and Taya Reimer (15p/11r) at DePaul, 12/10/14  
 Brianna Turner (29/18) at North Carolina, 1/15/15  
 Brianna Turner (25/12) vs. Duke, 1/26/17  
 Natalie Achonwa (20/20) vs. South Florida, 3/10/13 (@ Hartford, Conn.)

Lindsay Allen (10) vs. Ohio State, 3/24/17 (@ Lexington, Ky.)  
 Lindsay Allen (10 vs. Virginia, 3/3/17; 10 vs. Louisville, 3/4/17; 13 vs. Duke, 3/5/17, all @ Conway, S.C.)  
 Mary Gavin (17) at Marquette, 2/28/87  
 30 vs. Central Michigan, 12/22/13  
 9 vs. Florida State, 1/2/15  
 3 vs. Villanova, 3/8/09 (@ Hartford, Conn.)

Brianna Turner (5) vs. Robert Morris, 3/17/17  
 see 7 blocks  
 Brianna Turner (7) vs. Boston College, 2/23/17  
 Amanda Barksdale (11) vs. Boston College, 2/10/02  
 10 vs. Mount St. Mary's, 11/11/17  
 16 vs. Boston College, 2/10/02  
 vs. Louisville, 3/4/17 (@ Conway, S.C.)

Lindsay Allen (5) vs. Duke, 3/5/17 (@ Conway, S.C.)  
 Marina Mabrey (12) at Valparaiso, 11/23/15  
 21 vs. Saint Francis (Pa.), 12/31/12

28 vs. Georgetown, 1/15/13  
 See 25 or more  
 30 at West Virginia, 2/22/11  
 9 vs. Mount St. Mary's, 11/11/17  
 8 vs. Virginia, 3/3/17; 5 vs. Louisville, 3/4/17 (both @ Conway, S.C.)  
 5 vs. Louisville, 3/4/17 (@ Conway, S.C.)

## MISCELLANEOUS

Led ND in points/rebounds/assists  
Hit "final minute" game-winning shot  
Four-point play  
Made shot from midcourt or beyond  
Played every minute  
Played more than 40 minutes  
ND rallied from 10-point deficit to win  
ND rallied from 15-point deficit to win  
ND scored 20 straight points  
ND scored 25 straight points  
ND scored 30 straight points

Jewell Loyd (27p/8r/6a) vs. Maryland, 12/3/14 (@ Fort Wayne, Ind.)  
Kathryn Westbeld (FI/O:26.2, 2nd) vs. Ohio State, 12/2/15  
Madison Cable (9:52, 2nd half) vs. Wake Forest, 2/1/15  
Lindsay Allen (50 feet at 0:00, 1st half) vs. Florida State, 1/2/15  
Lindsay Allen (45) vs. Purdue, 3/19/17  
Lindsay Allen (45) and Marina Mabrey (41) vs. Purdue, 3/19/17  
Trailed at Syracuse, 10-23 (4:38 - 1st); won 85-80, 2/19/17  
Trailed vs. Syracuse, 7-22 (12:45 - 1st); won 79-68, 2/26/13  
22-0 run vs. Boston College, 2/23/17  
26-0 run vs. Valparaiso, 12/4/16  
36-0 run vs. Southeast Missouri State, 1/2/11

## OVERTIME

ND played an OT game  
ND played multiple overtimes  
ND won an OT game  
ND won an OT game at home  
ND won an OT game on the road  
ND lost an OT game

vs. Purdue (W, 88-82, ot), 3/19/17  
vs. Connecticut (W, 96-87, 3ot), 3/4/13  
See played an OT game  
See played an OT game  
at DePaul (W, 94-93, ot), 12/10/14  
vs. UCLA (L, 86-83, 2ot), 11/18/10

## RANKINGS

Played the No. 1 team in the AP poll  
Played the No. 1 team in the WBCA/USA Today poll  
Defeated top-10 opponent  
Defeated top-10 opponent at home  
Defeated top-10 opponent on the road  
Defeated top-10 opponent by double digits

lost vs. Connecticut (72-61), 12/7/16  
lost at Connecticut (91-81), 12/5/15  
vs. #8/11 Florida State (79-61), 2/26/17  
vs. #8/11 Florida State (79-61), 2/26/17  
See defeated top-10 opponent  
vs. #8/11 Florida State (79-61), 2/26/17

## SCORING MARGINS

ND won by 30-plus points  
ND won by 30-plus points at home  
ND won by 30-plus points on the road  
ND won by 30-plus points at a neutral site  
ND won by 40-plus points  
ND won by 50-plus points  
ND won by 60-plus points  
ND won by 70-plus points  
ND lost by 10-19 points  
ND lost by 10-19 at home  
ND lost by 10-19 points on the road  
ND lost by 10-19 points at a neutral site  
ND lost by 20-29 points  
ND lost by 20-29 points at home  
ND lost by 20-29 points on the road  
ND lost by 30-plus points

See 50 points  
56 — ND 121, Mount St. Mary's 65, 11/11/17  
34 — ND 86, at Wake Forest 52, 2/18/15  
40 — ND 91, UL-Lafayette 51, 11/22/16 (@ Houston, Texas)  
See 50 points  
56 — ND 121, Mount St. Mary's 65, 11/11/17  
60 — at ND 114, Valparaiso 54, 12/4/16  
75 — at ND 104, Holy Cross 29, 11/23/14  
11 — Connecticut 72, at ND 61, 12/7/16  
11 — Connecticut 72, at ND 61, 12/7/16  
10 — at Connecticut 91, ND 81, 12/5/15  
10 — Connecticut 63, ND 53, 4/7/15 (@ Tampa, Fla.)  
21 — Connecticut 79, ND 58, 4/8/14 (@ Nashville, Tenn.)  
25 — Connecticut 76, at ND 51, 3/1/10  
21 — at Connecticut 78, ND 57, 2/19/11  
39 — at Tennessee 89, ND 50, 3/17/02

## LAST TIME OPPONENT ...

## SCORING

Player scored 25 points  
Player scored 30 points  
Player scored 35 points  
Two players scored 20 points

Three players scored 20 points  
Two players scored 25 points  
None in double figures  
One in double figures

Five in double figures

Six in double figures

Scored 50 points/half  
Scored 55 points/half  
Scored 60 points/half  
Scored 100 points/game  
Scored 100 points/non-conference game  
Scored fewer than 15 points/half  
Scored fewer than 20 points/half  
Scored fewer than 40 points/game

Brittany McPhee (27), vs. Stanford, 3/26/17 (@ Lexington, Ky.)  
Asia Durr (31), Louisville, 2/6/17  
Heather Butler (37), UT Martin, 3/24/13 (@ Iowa City, Iowa)  
Ashley Morrisette (23) and Bridget Perry (22), Purdue, 3/19/17  
Angela Simpson (37), Bridgette Williams (24) and Stephanie Shaw (22), Northwestern State, 3/24/95 (@ Amarillo, Texas)  
Brittney Griner (32) and Odyssey Sims (25) at Baylor, 11/20/11  
at Georgia Tech, 1/2/17 (Zaire O'Neil had nine points)  
Kelsey Mitchell (18) vs. Ohio State, 3/24/17 (@ Lexington, Ky.)  
Erica McCall (27), Karlie Samuelson (20), Kaylee Johnson (17), Lili Thompson (11) and Marta Snizek (11) vs. Stanford, 3/25/16 (@ Lexington, Ky.)  
Jannon Roland (21), Danielle McCulley (14), Jennifer Jacoby (12), Stacey Lovelace (12), Nicole Erickson (11) and Shannon Lindsey (11), Purdue, 11/30/94  
50 (1st half), vs. Stanford, 3/25/16 (@ Lexington, Ky.)  
See 60 points/half  
63 (2nd half), Northwestern State, 3/24/95 (@ Amarillo, Texas)  
106, Connecticut, 12/8/98  
103, Northwestern State, 3/24/95 (@ Amarillo, Texas)  
14 (2nd half), Boston College, 2/23/27  
17 (1st half), at Georgia Tech, 1/2/17  
38, at Georgia Tech, 1/2/17

## FIELD GOAL SHOOTING

Shot 50 percent/game  
Shot 55 percent/game  
Shot 60 percent/game  
Shot below 20 percent/game  
Shot below 25 percent/game  
Shot below 30 percent/game  
Shot 50 percent/half  
Shot 55 percent/half  
Shot 60 percent/half  
Shot 65 percent/half  
Shot 70 percent/half  
Shot below 20 percent/half  
Shot below 25 percent/half  
Shot below 30 percent/half

## THREE-POINT SHOOTING

Player made 5 three-pointers  
Player made 6 three-pointers  
Player made 7 three-pointers  
Player attempted 10 three-pointers  
Made 10 three-pointers  
Did not make a three-pointer  
Shot 50 percent 3FG (min. 5 att.)  
Shot 60 percent 3FG (min. 5 att.)

## FREE-THROW SHOOTING

Player made 10 free-throws  
Player made 15 free-throws  
Player attempted 15 free-throws  
Player made 10 for 10 or better  
Shot 90 percent (min. 10 att.)  
Shot below 50 percent (min. 10 att.)  
Made 30 free-throws  
Made fewer than five FTs  
Attempted 40 free-throws  
Attempted fewer than five FTs

## REBOUNDS

Player had 15 rebounds  
Player had 20 rebounds  
Two players had double-figure rebounds  
Three players had double-figure rebounds  
Had 50 rebounds  
Out-rebounded ND by 10 or more

## DOUBLE-DOUBLES

Points & rebounds  
Points & assists  
Points & steals  
Two players had double-doubles  
Three players had double-doubles  
15 points and 15 rebounds  
20 points and 10 rebounds  
20 points and 20 rebounds

## TRIPLE-DOUBLES

Points, rebounds, assists  
Points, rebounds, steals

## ASSISTS

Player had 10 assists  
Player had 15 assists  
Had 25 assists  
Had 30 assists  
Had fewer than 10 assists  
Had 5 or fewer assists

50.0 (28-56), at Syracuse, 2/19/17  
55.9 (33-59), vs. Stanford, 3/25/16 (@ Lexington, Ky.)  
60.0 (30-50), DePaul, 1/22/08  
18.6 (11-59), Holy Cross, 11/23/14  
24.1 (14-58), at Georgia Tech, 1/2/17  
26.6 (17-64), Robert Morris, 3/17/17  
See 50 percent/half  
58.6 (17-29), 2nd half vs. Stanford, 3/26/17 (@ Lexington, Ky.)  
64.5 (20-31), 1st half vs. Stanford, 3/25/16 (@ Lexington, Ky.)  
68.2 (15-22), 2nd half by Texas A&M, 4/5/11 (@ Indianapolis, Ind.)  
70.0 (14-20), 2nd half by New Hampshire, 11/12/10  
9.4 (3-32) 2nd half vs. Boston College, 2/23/27  
21.9 (7-32) 2nd half vs. Robert Morris, 3/17/17  
See under 25 for a half

Brittany McPhee and Karlie Samuelson, vs. Stanford, 3/26/17 (@ Lexington, Ky.)  
Asia Durr vs. Louisville, 3/4/17 (@ Conway, S.C.)  
Angie Bjorklund, Tennessee, 1/5/08  
Anna Niki Stamolamprou (11) vs. Robert Morris, 3/17/17  
12, vs. Stanford, 3/26/17 (@ Lexington, Ky.)  
Duke, 2/16/15  
52.4 (11-21), vs. Louisville, 3/4/17 (@ Conway, S.C.)  
60.0 (6-10), Tennessee, 1/19/15

Brianna Kiesel (10), Pittsburgh, 2/26/15  
Nok Duany (15) at Georgetown, 2/23/02  
Brittany Hrynko (16) at DePaul, 12/10/14  
Allisha Gray (10-10) at North Carolina, 1/15/15  
93.3 (14-15), vs. Duke, 3/5/17 (@ Conway, S.C.)  
45.0 (9-12) at Georgia Tech, 1/2/17  
32 (attempted 37), Illinois, 11/24/98  
4 (attempted 8) at North Carolina, 1/22/17  
45 (made 28), at South Florida, 1/13/07  
1 (made 1) vs. Valparaiso, 12/4/16

Jessica Lindstrom (16), vs. Green Bay, 11/17/16  
Wendy Scholtens (20) at Vanderbilt, 1/8/89  
Oderah Chidom (11) and Azurá Stevens (10) vs. Duke, 3/4/16 (@ Greensboro, N.C.)  
Aurora Adams (16), Brenda McCunn (11) and Paula Langseth (10), Hawaii, 3/22/81 (@ Anchorage, Alaska)  
55, Syracuse, 1/21/16  
10, vs. Louisville, 3/4/17 (@ Conway, S.C.)

Myisha Hines-Allen (20/12) vs. Louisville, 3/4/17 (@ Conway, S.C.)  
Ashley Morrisette (23/10) vs. Purdue, 3/19/17  
Alexis Jones (16/10) at Duke, 2/2/14  
Nina Davis (26/13) and Sune Agbuqe (12/10), Baylor, 3/29/15 (@ Oklahoma City, Okla.)  
Mary Raese (24p/10r), Mary Westerwelle (11p/10r) and Netra McGrew (10p/10a), Idaho, 3/21/86 (@ Amarillo, Texas)  
See 15/15  
Mariella Fasoula (20/14) at Boston College, 1/19/17  
Wendy Scholtens (29/20) at Vanderbilt, 1/8/89

Liad Suez-Karni (14p/10r/10a), Villanova, 2/7/06  
Diana Vines (23p/11r/12s) at DePaul, 1/24/89

Ashley Morrisette (10), Purdue, 3/19/17  
Veronica Pettry (16) at Loyola-Chicago, 2/18/89  
25, Connecticut, 4/8/14 (@ Nashville, Tenn.)  
30 at Loyola-Chicago, 2/18/89  
8, Boston College, 2/23/17  
5, at Georgia Tech, 1/2/17

**BLOCKED SHOTS**

Player blocked 5 shots  
 Blocked 10 shots  
 Blocked 15 shots  
 Blocked 0 shots

Jassany Williams (9) at Miami, 1/8/15  
 10 at Miami, 1/8/15  
 16 at Connecticut, 1/27/07  
 at Boston College, 1/19/17

**STEALS**

Player had 5 steals  
 Player had 6 steals  
 Player had 7 steals  
 Player had 10 steals  
 Had 15 steals  
 Had 20 steals

J'Kyra Brown, Virginia, 1/29/17  
 see player had seven steals  
 Kala Green, North Carolina A&T, 3/19/16  
 Alexis Jones at Duke, 2/2/14  
 16 at Duke, 2/2/14  
 24, Georgetown, 1/29/00

**TURNOVERS**

Player committed 10 turnovers  
 Committed 20 turnovers or more and won  
 Committed 25 turnovers or more  
 Committed 30 turnovers or more  
 Committed 35 turnovers or more  
 Committed 40 turnovers or more  
 Committed 5 turnovers or fewer  
 Committed 10 turnovers or fewer

Samantha Logic (11) at Iowa, 3/26/13  
 24, Connecticut, 12/6/14  
 25, vs Mount St. Mary's, 11/11/17  
 31 vs. Valparaiso, 12/4/16  
 35, Connecticut, 3/4/13  
 46, Akron, 11/11/11  
 5 at Villanova, 1/25/03  
 9, Robert Morris, 3/17/17

**MISCELLANEOUS**

Led team in points/rebounds/assists  
 Four-point play  
 Hit "final minute" game-winning shot  
 Played every minute  
 Played more than 40 minutes  
 Rallied from 10-point deficit to win  
 Led ND by 10 or more at halftime  
 Led ND by 15 or more at halftime  
 Led ND by 25 or more points

Breyana Mason (13p/6r/3a), vs. Virginia, 3/3/17 (@ Conway, S.C.)  
 Tori Jankoska (2:44, 1st quarter) at Michigan State, 12/20/16  
 Jamie Nared (0:11), Tennessee, 1/16/17  
 Erica McCall (40), vs. Stanford, 3/26/17 (@ Lexington, Ky.)  
 Dominique Oden (43) and Ashley Morrisette (42), Purdue, 3/19/17  
 Stanford, 3/26/17 (ND led by 16, 47-31, early in the third quarter.  
 Stanford won, 76-75)  
 11, vs. Stanford, 3/25/16 (@ Lexington, Ky.)  
 20 at Miami (40-20), 1/8/15  
 25 by Baylor (75-50 at 4:56 of 2nd half), 4/3/12 (@ Denver, Colo.)

## NOTRE DAME HIGHS

POINTS	121	MOUNT (11/11/17)
FIELD GOALS MADE	45	MOUNT (11/11/17)
FIELD GOAL ATTEMPTS	77	MOUNT (11/11/17)
FIELD GOAL PERCENTAGE	.584 (45-77)	MOUNT (11/11/17)
3 PT FIELD GOALS MADE	6	MOUNT (11/11/17)
3 PT FG ATTEMPTS	12	MOUNT (11/11/17)
3 PT FG PERCENTAGE	.500 (6-12)	MOUNT (11/11/17)
FREE THROWS MADE	25	MOUNT (11/11/17)
FREE THROW ATTEMPTS	37	MOUNT (11/11/17)
FREE THROW PERCENTAGE	.676 (25-37)	MOUNT (11/11/17)
REBOUNDS	50	MOUNT (11/11/17)
ASSISTS	25	MOUNT (11/11/17)
STEALS	15	MOUNT (11/11/17)
BLOCKED SHOTS	10	MOUNT (11/11/17)
TURNOVERS	9	MOUNT (11/11/17)
FOULS	16	MOUNT (11/11/17)

## OPPONENT HIGHS

POINTS	65	MOUNT (11/11/17)
FIELD GOALS MADE	24	MOUNT (11/11/17)
FIELD GOAL ATTEMPTS	59	MOUNT (11/11/17)
FIELD GOAL PERCENTAGE	.407 (24-59)	MOUNT (11/11/17)
3 PT FIELD GOALS MADE	8	MOUNT (11/11/17)
3 PT FG ATTEMPTS	21	MOUNT (11/11/17)
3 PT FG PERCENTAGE	.381 (8-21)	MOUNT (11/11/17)
FREE THROWS MADE	9	MOUNT (11/11/17)
FREE THROW ATTEMPTS	15	MOUNT (11/11/17)
FREE THROW PERCENTAGE	.600 (9-15)	MOUNT (11/11/17)
REBOUNDS	27	MOUNT (11/11/17)
ASSISTS	14	MOUNT (11/11/17)
STEALS	6	MOUNT (11/11/17)
BLOCKED SHOTS	5	MOUNT (11/11/17)
TURNOVERS	26	MOUNT (11/11/17)
FOULS	28	MOUNT (11/11/17)

## NOTRE DAME LOWS

POINTS	121	MOUNT (11/11/17)
FIELD GOALS MADE	45	MOUNT (11/11/17)
FIELD GOAL ATTEMPTS	77	MOUNT (11/11/17)
FIELD GOAL PERCENTAGE	.584 (45-77)	MOUNT (11/11/17)
3 PT FIELD GOALS MADE	6	MOUNT (11/11/17)
3 PT FG ATTEMPTS	12	MOUNT (11/11/17)
3 PT FG PERCENTAGE	.500 (6-12)	MOUNT (11/11/17)
FREE THROWS MADE	25	MOUNT (11/11/17)
FREE THROW ATTEMPTS	37	MOUNT (11/11/17)
FREE THROW PERCENTAGE	.676 (25-37)	MOUNT (11/11/17)
REBOUNDS	50	MOUNT (11/11/17)
ASSISTS	25	MOUNT (11/11/17)
STEALS	15	MOUNT (11/11/17)
BLOCKED SHOTS	10	MOUNT (11/11/17)
TURNOVERS	9	MOUNT (11/11/17)
FOULS	16	MOUNT (11/11/17)

## OPPONENT LOWS

POINTS	65	MOUNT (11/11/17)
FIELD GOALS MADE	24	MOUNT (11/11/17)
FIELD GOAL ATTEMPTS	59	MOUNT (11/11/17)
FIELD GOAL PERCENTAGE	.407 (24-59)	MOUNT (11/11/17)
3 PT FIELD GOALS MADE	8	MOUNT (11/11/17)
3 PT FG ATTEMPTS	21	MOUNT (11/11/17)
3 PT FG PERCENTAGE	.381 (8-21)	MOUNT (11/11/17)
FREE THROWS MADE	9	MOUNT (11/11/17)
FREE THROW ATTEMPTS	15	MOUNT (11/11/17)
FREE THROW PERCENTAGE	.600 (9-15)	MOUNT (11/11/17)
REBOUNDS	27	MOUNT (11/11/17)
ASSISTS	14	MOUNT (11/11/17)
STEALS	6	MOUNT (11/11/17)
BLOCKED SHOTS	5	MOUNT (11/11/17)
TURNOVERS	26	MOUNT (11/11/17)
FOULS	28	MOUNT (11/11/17)



## NOTRE DAME INDIVIDUAL HIGHS

Points	21	Arike Ogunbowale vs MOUNT (11/11/17)
	18	Marina Mabrey vs MOUNT (11/11/17)
	18	Jessica Shepard vs MOUNT (11/11/17)
	16	Jackie Young vs MOUNT (11/11/17)
	11	Danielle Patterson vs MOUNT (11/11/17)
Field Goals Made	8	Arike Ogunbowale vs MOUNT (11/11/17)
	7	Marina Mabrey vs MOUNT (11/11/17)
	7	Jessica Shepard vs MOUNT (11/11/17)
Field Goal Att.	14	Arike Ogunbowale vs MOUNT (11/11/17)
	12	Jackie Young vs MOUNT (11/11/17)
	12	Marina Mabrey vs MOUNT (11/11/17)
FG Pct (min 5 made)	.636 (7-11)	Jessica Shepard vs MOUNT (11/11/17)
	.583 (7-12)	Marina Mabrey vs MOUNT (11/11/17)
3-Point FG Made	3	Marina Mabrey vs MOUNT (11/11/17)
	1	Lili Thompson vs MOUNT (11/11/17)
	1	Arike Ogunbowale vs MOUNT (11/11/17)
	1	Kaitlin Cole vs MOUNT (11/11/17)
3-Point FG Att.	5	Marina Mabrey vs MOUNT (11/11/17)
	4	Arike Ogunbowale vs MOUNT (11/11/17)
3-Pt FG Pct (min 2 made)	.600 (3-5)	Marina Mabrey vs MOUNT (11/11/17)
Free Throws Made	6	Jackie Young vs MOUNT (11/11/17)
	5	Danielle Patterson vs MOUNT (11/11/17)
Free Throw Att.	8	Danielle Patterson vs MOUNT (11/11/17)
	7	Jessica Shepard vs MOUNT (11/11/17)
FT Pct (min 3 made)	1.000 (6-6)	Jackie Young vs MOUNT (11/11/17)
	1.000 (3-3)	Lili Thompson vs MOUNT (11/11/17)
Rebounds	11	Jessica Shepard vs MOUNT (11/11/17)
	7	Mikayla Vaughn vs MOUNT (11/11/17)
	7	Arike Ogunbowale vs MOUNT (11/11/17)
Assists	8	Lili Thompson vs MOUNT (11/11/17)
	4	Arike Ogunbowale vs MOUNT (11/11/17)
Steals	3	Arike Ogunbowale vs MOUNT (11/11/17)
	3	Marina Mabrey vs MOUNT (11/11/17)
Blocked Shots	3	Kristina Nelson vs MOUNT (11/11/17)
	3	Mikayla Vaughn vs MOUNT (11/11/17)
Turnovers	2	Jessica Shepard vs MOUNT (11/11/17)
	2	Arike Ogunbowale vs MOUNT (11/11/17)
Fouls	3	Mikayla Vaughn vs MOUNT (11/11/17)
	3	Kathryn Westbeld vs MOUNT (11/11/17)
Minutes	31	Jackie Young vs MOUNT (11/11/17)
	26	Marina Mabrey vs MOUNT (11/11/17)
	25	Lili Thompson vs MOUNT (11/11/17)
	25	Arike Ogunbowale vs MOUNT (11/11/17)
	22	Mikayla Vaughn vs MOUNT (11/11/17)

## OPPONENT INDIVIDUAL HIGHS

Points	12	White,Ashlee vs MOUNT (11/11/17)
	11	Dickson,Katrice vs MOUNT (11/11/17)
	8	Agentowicz,Kayla vs MOUNT (11/11/17)
	8	Lee,Rebecca vs MOUNT (11/11/17)
	8	Sullivan,Daly vs MOUNT (11/11/17)
Field Goals Made	5	White,Ashlee vs MOUNT (11/11/17)
	4	Dickson,Katrice vs MOUNT (11/11/17)
Field Goal Att.	9	White,Ashlee vs MOUNT (11/11/17)
	9	Dickson,Katrice vs MOUNT (11/11/17)
FG Pct (min 5 made)	.556 (5-9)	White,Ashlee vs MOUNT (11/11/17)
3-Point FG Made	2	Agentowicz,Kayla vs MOUNT (11/11/17)
	2	Sullivan,Daly vs MOUNT (11/11/17)
	2	Dickson,Katrice vs MOUNT (11/11/17)
3-Point FG Att.	7	Sullivan,Daly vs MOUNT (11/11/17)
	4	Dickson,Katrice vs MOUNT (11/11/17)
3-Pt FG Pct (min 2 made)	.667 (2-3)	Agentowicz,Kayla vs MOUNT (11/11/17)
	.500 (2-4)	Dickson,Katrice vs MOUNT (11/11/17)
Free Throws Made	2	Lawless,Juliette vs MOUNT (11/11/17)
	2	Rowson,Hunter vs MOUNT (11/11/17)
	2	Lee,Rebecca vs MOUNT (11/11/17)
Free Throw Att.	4	Lawless,Juliette vs MOUNT (11/11/17)
	3	Rowson,Hunter vs MOUNT (11/11/17)
Rebounds	5	Lawless,Juliette vs MOUNT (11/11/17)
	5	Lee,Rebecca vs MOUNT (11/11/17)
Assists	4	Lawless,Juliette vs MOUNT (11/11/17)
	4	Dickson,Katrice vs MOUNT (11/11/17)
Steals	2	Settle,Jatarrikah vs MOUNT (11/11/17)
	1	Lawless,Juliette vs MOUNT (11/11/17)
	1	Dickson,Katrice vs MOUNT (11/11/17)
	1	Sullivan,Daly vs MOUNT (11/11/17)
	1	Hummell,Caroline vs MOUNT (11/11/17)
Blocked Shots	4	Lee,Rebecca vs MOUNT (11/11/17)
	1	Scheuvront,Katrina vs MOUNT (11/11/17)
Turnovers	9	White,Ashlee vs MOUNT (11/11/17)
	4	Lawless,Juliette vs MOUNT (11/11/17)
Fouls	5	Dickson,Katrice vs MOUNT (11/11/17)
	4	Lawless,Juliette vs MOUNT (11/11/17)
	4	Lee,Rebecca vs MOUNT (11/11/17)
	4	Rowson,Hunter vs MOUNT (11/11/17)

GAME BY GAME COMPARISON

Opponent	1st	2nd	Score	Mar	Total FG	FG Pct	3-Pointers	3FG Pct	Free Throws	FT Pct	Rebounds	Assist	T/Over	Block	Steal	Fouls	
MOUNT	61/35	60/30	121-65	+56	45-77/24-59	.584/.407	6-12/8-21	.500/.381	25-37/9-15	.676/.600	50/27	+23	25/14	9/26	10/5	15/6	16/28

Note: Game totals are displayed in the format TEAM/OPPONENT for each category

GAME

1

MOUNT ST. MARY'S, 65

#6/5 NOTRE DAME,

November 11, 2017

Purcell Pavilion (Notre Dame, Ind.)

## MOUNT 65 • 0-1

#	Player	Total		3-Ptr		Rebounds			PF	TP	A	TO	Blk	Stl	Min
		FG-FGA	FG-FGA	FT-FTA	Off	Def	Tot								
11	Katrice Dickson	f	4-9	2-4	1-2	0	0	0	5	11	4	2	0	1	26
32	Caroline Hummell	c	3-6	0-0	0-0	1	1	2	1	6	2	0	0	1	15
10	Ashlee White	g	5-9	1-2	1-2	1	1	2	1	12	1	9	0	0	26
21	Kayla Agentowicz	g	3-5	2-3	0-0	0	0	0	3	8	0	2	0	0	22
24	Juliette Lawless	g	1-5	1-2	2-4	2	3	5	4	5	4	4	0	1	28
01	Daly Sullivan		3-8	2-7	0-0	1	0	1	2	8	1	2	0	1	27
03	Bridget Birkhead		0-2	0-2	0-0	0	1	1	1	0	0	0	0	0	8
04	Jatarrikah Settle		1-7	0-0	1-2	1	1	2	3	3	2	3	0	2	16
13	Stacey Koutris		0-1	0-1	0-0	0	0	0	0	0	0	0	0	0	3
20	Hunter Rowson		1-4	0-0	2-3	1	1	2	4	4	0	1	0	0	15
22	Jackie Buzaid		0-0	0-0	0-0	0	0	0	0	0	0	0	0	0	2
33	Katrina Scheuvront		0-0	0-0	0-0	0	1	1	0	0	0	0	1	0	2
34	Rebecca Lee		3-3	0-0	2-2	0	5	5	4	8	0	3	4	0	10
Team						4	2	6							
Totals			24-59	8-21	9-15	11	16	27	28	65	14	26	5	6	200

1st - FG %: 6-14 42.9% 2nd: 7-15 46.7% 3rd: 8-15 53.3% 4th: 3-15 20.0% Game: 24-59 40.7% Deadball  
 3FG %: 2-5 40.0% 4-6 66.7% 2-6 33.3% 0-4 0.0% 8-21 38.1% Rebounds  
 FT %: 3-4 75.0% 0-2 0.0% 0-0 0.0% 6-9 66.7% 9-15 60.0% 2

## Notre Dame 121 • 1-0

#	Player	Total		3-Ptr		Rebounds			PF	TP	A	TO	Blk	Stl	Min
		FG-FGA	FG-FGA	FT-FTA	Off	Def	Tot								
23	Jessica Shepard	f	7-11	0-0	4-7	7	4	11	1	18	3	2	0	0	19
01	Lili Thompson	g	3-4	1-1	3-3	0	1	1	1	10	8	1	1	2	25
03	Marina Mabrey	g	7-12	3-5	1-2	3	1	4	1	18	3	0	1	3	26
05	Jackie Young	g	5-12	0-1	6-6	4	2	6	1	16	2	1	0	2	31
24	Arike Ogunbowale	g	8-14	1-4	4-6	1	6	7	0	21	4	2	0	3	25
02	Kaitlin Cole		2-4	1-1	0-0	0	0	0	1	5	0	1	0	1	9
21	Kristina Nelson		2-3	0-0	0-0	1	2	3	2	4	0	0	3	2	11
30	Mikayla Vaughn		4-9	0-0	1-3	3	4	7	3	9	3	1	3	1	22
32	Danielle Patterson		3-3	0-0	5-8	2	2	4	1	11	0	0	2	1	16
33	Kathryn Westbeld		3-4	0-0	0-0	1	3	4	3	6	2	1	0	0	10
40	Maureen Butler		1-1	0-0	1-2	0	1	1	2	3	0	0	0	0	6
Team						0	2	2							
Totals			45-77	6-12	25-37	22	28	50	16	121	25	9	10	15	200

1st - FG %: 13-21 61.9% 2nd: 10-20 50.0% 3rd: 12-22 54.5% 4th: 10-14 71.4% Game: 45-77 58.4% Deadball  
 3FG %: 1-3 33.3% 2-4 50.0% 2-4 50.0% 1-1 100.0% 6-12 50.0% Rebounds  
 FT %: 6-8 75.0% 6-9 66.7% 6-10 60.0% 7-10 70.0% 25-37 67.6%

Officials: Joseph Vaszily, Jeffrey Smith, Robert Enterline  
 Technical fouls: MOUNT-None. Notre Dame-None.  
 Attendance: 7418

Score by periods	1st	2nd	3rd	4th	Total
MOUNT	17	18	18	12	65
Notre Dame	33	28	32	28	121

	Points	In	Off	2nd	Fast	Bench
	Paint	T/O	Chance	Break		
MOUNT	24	6	9	0	23	
ND	68	42	25	12	38	

Last FG - MOUNT 4th-02:23, ND 4th-00:26.  
 Largest lead - MOUNT None, ND by 56 4th-00:26.  
 MOUNT led for 00:00. ND led for 39:56. Game was tied for 00:04.

Score tied - 0 times.  
 Lead changed - 0 times.

GAME

2

#6/5 NOTRE DAME

WESTERN KENTUCKY

November 14, 2017

E.A. Diddle Arena (Bowling Green, Ky.)

GAME

4

MOUNT ST. MARY'S, 65

#6/5 NOTRE DAME,

November 11, 2017

Purcell Pavilion (Notre Dame, Ind.)

**Notre Dame Combined Team Statistics (as of Nov 12, 2017)**  
**All games**

<b>RECORD:</b>	<b>OVERALL</b>	<b>HOME</b>	<b>AWAY</b>	<b>NEUTRAL</b>
ALL GAMES	1-0	1-0	0-0	0-0
CONFERENCE	0-0	0-0	0-0	0-0
NON-CONFERENCE	1-0	1-0	0-0	0-0

#	Player	gp-gs	min	avg	Total		3-Point		F-Throw		Rebounds				pf	dq	a	to	blk	stl	pts	avg
					fg-fga	fg%	3fg-fga	3fg%	ft-fa	ft%	off	def	tot	avg								
24	Arike Ogunbowale	1-1	25	25.0	8-14	.571	1-4	.250	4-6	.667	1	6	7	7.0	0	0	4	2	0	3	21	21.0
03	Marina Mabrey	1-1	26	26.0	7-12	.583	3-5	.600	1-2	.500	3	1	4	4.0	1	0	3	0	1	3	18	18.0
23	Jessica Shepard	1-1	19	19.0	7-11	.636	0-0	.000	4-7	.571	7	4	11	11.0	1	0	3	2	0	0	18	18.0
05	Jackie Young	1-1	31	31.0	5-12	.417	0-1	.000	6-6	1.000	4	2	6	6.0	1	0	2	1	0	2	16	16.0
32	Danielle Patterson	1-0	16	16.0	3-3	1.000	0-0	.000	5-8	.625	2	2	4	4.0	1	0	0	0	2	1	11	11.0
01	Lili Thompson	1-1	25	25.0	3-4	.750	1-1	1.000	3-3	1.000	0	1	1	1.0	1	0	8	1	1	2	10	10.0
30	Mikayla Vaughn	1-0	22	22.0	4-9	.444	0-0	.000	1-3	.333	3	4	7	7.0	3	0	3	1	3	1	9	9.0
33	Kathryn Westbeld	1-0	10	10.0	3-4	.750	0-0	.000	0-0	.000	1	3	4	4.0	3	0	2	1	0	0	6	6.0
02	Kaitlin Cole	1-0	9	9.0	2-4	.500	1-1	1.000	0-0	.000	0	0	0	0.0	1	0	0	1	0	1	5	5.0
21	Kristina Nelson	1-0	11	11.0	2-3	.667	0-0	.000	0-0	.000	1	2	3	3.0	2	0	0	0	3	2	4	4.0
40	Maureen Butler	1-0	6	6.0	1-1	1.000	0-0	.000	1-2	.500	0	1	1	1.0	2	0	0	0	0	0	3	3.0
Team											0	2	2									
Total.....		1	200		45-77	.584	6-12	.500	25-37	.676	22	28	50	50.0	16	0	25	9	10	15	121	121.0
Opponents.....		1	200		24-59	.407	8-21	.381	9-15	.600	11	16	27	27.0	28	-	14	26	5	6	65	65.0

<b>TEAM STATISTICS</b>	<b>ND</b>	<b>OPP</b>	<b>Date</b>	<b>Opponent</b>	<b>Score</b>	<b>Att.</b>
SCORING	121	65	11/11/17	MOUNT	w 121-65	7418
Points per game	121.0	65.0	* - Conference game			
Scoring margin	+56.0	-				
FIELD GOALS-ATT	45-77	24-59				
Field goal pct	.584	.407				
3 POINT FG-ATT	6-12	8-21				
3-point FG pct	.500	.381				
3-pt FG made per game	6.0	8.0				
FREE THROWS-ATT	25-37	9-15				
Free throw pct	.676	.600				
F-Throws made per game	25.0	9.0				
REBOUNDS	50	27				
Rebounds per game	50.0	27.0				
Rebounding margin	+23.0	-				
ASSISTS	25	14				
Assists per game	25.0	14.0				
TURNOVERS	9	26				
Turnovers per game	9.0	26.0				
Turnover margin	+17.0	-				
Assist/turnover ratio	2.8	0.5				
STEALS	15	6				
Steals per game	15.0	6.0				
BLOCKS	10	5				
Blocks per game	10.0	5.0				
ATTENDANCE	7418	0				
Home games-Avg/Game	1-7418	0-0				
Neutral site-Avg/Game	-	0-0				

<b>Score by Periods</b>	<b>1st</b>	<b>2nd</b>	<b>3rd</b>	<b>4th</b>	<b>Totals</b>
Notre Dame	33	28	32	28	121
Opponents	17	18	18	12	65

## TV/RADIO



**#1 Lili Thompson**  
Gs. // G // 5-7  
Mansfield, Texas  
Stanford // Timberview



**#2 Kaitlin Cole**  
So.. // G // 5-10  
Toledo, Ohio  
Sylvania Northview



**#3 Marina Mabrey**  
Jr. // G // 5-11  
Belmar, N.J.  
Manasquan



**#5 Jackie Young**  
So. // G // 6-0  
Princeton, Ind.  
Princeton Community



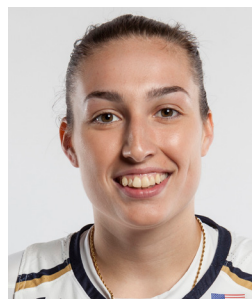
**#11 Brianna Turner**  
Sr. // F // 6-3  
Pearland, Texas  
Manvel



**#14 Mychal Johnson**  
Sr. // G // 5-7  
Huntington, W. Va.  
Huntington St. Joseph



**#21 Kristina Nelson**  
Gs. // F // 6-4  
Buford, Ga.  
Buford



**#23 Jessica Shepard**  
Jr. // F // 6-4  
Fremont, Neb.  
Nebraska // Fremont



**#24 Arike Ogunbowale**  
Jr. // G // 5-8  
Milwaukee, Wis.  
Divine Savior Holy Angels



**#30 Mikayla Vaughn**  
Fr. // C // 6-3  
Philadelphia, Penn.  
Paul VI



**#32 Danielle Patterson**  
Fr. // 6-2 // F  
Brooklyn, N.Y.  
The Mary Louis Academy



**#33 Kathryn Westbeld**  
Sr. // F // 6-2  
Kettering, Ohio  
Kettering Fairmont



**#40 Maureen Butler**  
Jr. // F // 6-1  
Livonia, Mich.  
Dearborn Divine Child



**Muffet McGraw**  
Karen & Kevin Keyes Head Coach  
31st Season at Notre Dame  
36th Overall as Head Coach



**Niele Ivey**  
Associate Head Coach  
2nd Season as Associate  
11th Season at Notre Dame



**Carol Owens**  
Associate Head Coach  
9th Season as Associate  
18th Season at Notre Dame



**Beth Cunningham**  
Associate Coach  
6th Season



**Katie Capps**  
Director of Operations  
3rd Season