



# NOTRE DAME

## Women's Basketball 2009-10

2001 NCAA Champions • 1997 NCAA Final Four  
7 NCAA Sweet 16 Berths • 16 NCAA Tourney Appearances

### 2009-10 ND Women's Basketball: Game 1

#4/7 Notre Dame *Fighting Irish* (0-0 / 0-0 BIG EAST) vs.  
Arkansas-Pine Bluff *Lady Lions* (0-1 / 0-0 SWAC)

- ◆ **DATE:** November 15, 2009
- ◆ **TIME:** 7:00 p.m. ET
- ◆ **AT:** Notre Dame, Ind.  
Purcell Pavilion (9,149)
- ◆ **SERIES:** First meeting
- ◆ **RADIO:** Pulse FM (96.9/92.1)  
UND.com  
Bob Nagle, p-b-p
- ◆ **LIVE STATS:** UND.com
- ◆ **TEXT ALERT:** UND.com
- ◆ **TWITTER:** @ndwbbsid
- ◆ **TICKETS:** (574) 631-7356



### Storylines

- ◆ Notre Dame is 24-8 (.750) in season openers, including a 19-3 (.864) record in the **Muffet McGraw** era.
- ◆ The Irish are 39-5 (.886) against first-time opponents and have won 14 in a row against new foes since they joined the BIG EAST Conference in 1995-96.

**W**ith one of its deepest teams in years, and one of the more productive off-seasons in recent memory, No. 4/7 Notre Dame opens the 2009-10 campaign on Sunday with a 7 p.m. (ET) matchup against Arkansas-Pine Bluff in the first regular season women's basketball game at the newly-remodeled Purcell Pavilion.

The Irish played only one exhibition this year, defeating rising Division II power Indianapolis, 97-53 on Nov. 3 at Purcell Pavilion. Notre Dame needed 10 minutes to shake loose the rust from its eight-month hiatus, but closed the first half on a 22-6 run to put the game on ice. The Irish also held the Greyhounds without a field goal for more than 10 minutes crossing over halftime.

Sophomore forward **Erica Solomon** and freshman guard **Skylar Diggins** led six Irish players in double figures with 17 points each.

### Rankings

- ◆ Notre Dame is ranked fourth in the Associated Press poll and seventh in the ESPN/USA Today poll.
- ◆ Arkansas-Pine Bluff is not ranked.

### Web Sites

- ◆ Notre Dame: [www.UND.com](http://www.UND.com)
- ◆ Arkansas-Pine Bluff: [uapblionsroar.com](http://uapblionsroar.com)
- ◆ BIG EAST: [www.bigeast.org](http://www.bigeast.org)
- ◆ SWAC: [www.swac.org](http://www.swac.org)

### Setting The Standard

Under the guidance of 23rd-year head coach **Muffet McGraw**, Notre Dame has evolved into one of the country's leading women's basketball powers. The Irish have appeared in 16 NCAA Tournaments (including a current streak of 14 in a row) and advanced to the NCAA Sweet 16 seven times in the past 12 years. Notre Dame also has reached the NCAA Women's Final Four twice, winning college basketball's ultimate prize with the 2001 national championship.

In its history, Notre Dame has developed nine All-Americans, 10 WNBA players (including seven draft picks in the past nine years) and four USA Basketball veterans (eight medals won). Now in their 33rd season in 2008-09, the Irish own an all-time record of **660-296 (.690)**.

### Notre Dame Head Coach Muffet McGraw

- Saint Joseph's '77
- ◆ 23rd season at Notre Dame
    - 496-197 (.716) at Notre Dame.
    - 584-238 (.710) in 28th season overall.
  - ◆ 2001 consensus National Coach of the Year
  - ◆ Four-time Naismith Coach of the Year finalist
  - ◆ Four-time conference Coach of the Year
  - ◆ 2009 WBCA Carol Eckman Award recipient

### Notre Dame's Probable Starting Lineup (2008-09 statistics listed // C = captain)

No	Name	Pos	Ht	Yr	PPG	RPG	Other	Notes
32	Becca Bruszewski	F	6-1	Jr.	10.7	5.0	1.7 apg	• Dbl'd avgs. in pts, rebs, asst, stls last yr
20	◆ Ashley Barlow (C)	G	5-9	Sr.	12.7	4.8	2.4 spg	• Top scorer on '09 Europe tour (13.0)
21	✓ Natalie Novosel	G	5-11	So.	6.9	2.9	1.5 spg	• 13 pts, 6 rebs. in exhib. win over Ulndy
23	Melissa Lechlitner (C)	G	5-7	Sr.	10.6	2.6	3.4 apg	• 2nd-yr starting PG; 1.34 career A/TQ ratio
24	◆ Lindsay Schrader (C)	G	6-0	Sr.	12.6	7.4	2.2 apg	• Returns for 5th year (torn ACL in '06-07)

### Off the Bench For the Irish

1	✓ Erica Solomon	F	6-2	So.	6.0	4.5	1.2 bpg	• 17 pts, 6 rebs, 4 stls, 16 min in exhib.
4	Skylar Diggins	G	5-9	Fr.	—	—	—	• Team-high 17 pts in exhibition vs Ulndy
10	Kellie Watson	F	6-2	So.	3.8	2.5	0.9 apg	• 2nd on team with 28 3FG last season
12	Fraderica Miller	G	5-10	So.	0.7	0.6	0.7 spg	• Shared team high with 6 rebs in exhib.
14	Devereaux Peters	F	6-2	Jr.	7.3	4.3	2.0 bpg	• Rehabbing from torn ACL last season
15	Kaila Turner	G	5-8	Fr.	—	—	—	• Two-time Illinois HS all-state selection
22	Brittany Mallory	G	5-10	Jr.	8.1	3.3	2.9 apg	• 12 pts, game-high 4 asst in exhibition
44	Alena Christiansen	G	5-7	Sr.	0.5	0.2	0.3 spg	• Walk-on joined team midway thru last yr
52	Erica Williamson	C	6-4	Sr.	5.7	4.3	0.9 bpg	• Drew team-high 12 charges last season

Pronunciations: Bruszewski (broo-SHEFF-skee); Fraderica (frah-DARE-uh-kuh); Kaila (KAY-luh); Lechlitner (LECK-light-ner); Novosel (KNOW-vuh-sell)

◆ = '09 All-BIG EAST Conference selection (Schrader - first team; Barlow - second team) // ✓ = '09 BIG EAST All-Freshman Team selection

### 2009-10 Schedule

### 0-0 / 0-0 BIG EAST

N3	(4) Indianapolis (exhibition)	W, 97-53
N15	Arkansas-Pine Bluff	7:00 ET
N19	@ Michigan State <sup>BTN</sup>	6:00 ET
N22	Iona	2:00 ET
N26	vs. San Diego State <sup>1</sup>	3:15 ET
N27	vs. South Carolina <sup>1</sup>	1:00 ET
N28	vs. Oklahoma <sup>1</sup>	3:15 ET
D2	Eastern Michigan	7:00 ET
D8	IPFW	7:00 ET
D12	Valparaiso	2:00 ET
D20	Charlotte	1:00 ET
D29	@ Central Florida <sup>CBS C</sup>	1:00 ET
D31	Vanderbilt <sup>CBS C</sup>	2:00 ET
J4	@ Purdue <sup>ESPN2</sup>	7:00 ET
J9	• Villanova <sup>BETV</sup>	2:00 ET
J12	• South Florida	7:00 ET
J16	• @ Connecticut <sup>ESPN</sup>	9:00 ET
J19	• @ Louisville <sup>CBS C</sup>	7:00 ET
J24	• West Virginia <sup>ESPN2</sup>	1:00 ET
J27	• Providence	7:00 ET
J30	• @ Syracuse	1:00 ET
F1	• @ Rutgers <sup>ESPN2</sup>	7:30 ET
F6	• Pittsburgh	2:00 ET
F9	• @ Cincinnati	7:00 ET
F14	• DePaul <sup>ESPN2</sup>	3:00 ET
F16	• @ St. John's	7:00 ET
F20	• @ Georgetown	3:00 ET
F23	• Marquette	7:00 ET
F27	• @ Seton Hall	2:00 ET
M1	• Connecticut <sup>ESPN2</sup>	7:00 ET
M5	BIG EAST 1st Round <sup>2</sup>	TBA
M6	BIG EAST 2nd Round <sup>2-BETV</sup>	TBA
M7	BIG EAST Quarterfinal <sup>2-ESPN2</sup>	TBA
M8	BIG EAST Semifinal <sup>2-ESPN2</sup>	TBA
M9	BIG EAST Final <sup>2-ESPN</sup>	7:00 ET
M21	NCAA 1st Round <sup>3-ESPN/ESPN2</sup>	TBA
M23	NCAA 2nd Round <sup>3-ESPN/ESPN2</sup>	TBA
M27	NCAA Regional Semifinal <sup>3-ESPN</sup>	TBA
M28	NCAA Regional Semifinal <sup>3-ESPN</sup>	TBA
M29	NCAA Regional Final <sup>3-ESPN</sup>	TBA
M30	NCAA Regional Final <sup>3-ESPN</sup>	TBA
A4	NCAA National Semifinals <sup>4-ESPN</sup>	TBA
A6	NCAA Championship Game <sup>4-ESPN</sup>	TBA

(x) = numbers before opponent name indicate ND rank in AP/ESPN-USA Today polls; numbers after are opponent rank.

- = BIG EAST Conference game
- 1 = Paradise Jam (St. Thomas, U.S. Virgin Islands)
- 2 = BIG EAST Championship (Hartford, Conn.)
- 3 = NCAA Championship (1st/2nd rounds at Purcell Pavilion; Regionals at Dayton, Ohio; Kansas City, Mo.; Memphis, Tenn.; Sacramento, Calif.)
- 4 = NCAA Women's Final Four (San Antonio, Texas)

CBS C = Games to be televised on CBS College Sports  
BETV = Game to be televised on BIG EAST TV package  
BTN = Game to be televised on Big Ten Network

NOTE: Selected regular-season home games not scheduled for commercial TV will be webcast live on UND.com.

All games will be broadcast live on South Bend's Pulse FM (96.9/92.1) and worldwide on the Internet at UND.com.

All times Eastern and subject to change





## A Quick Look At The Fighting Irish

The faces may be the same, but the focus, drive and determination have never been greater for the Notre Dame women's basketball program as the Irish head into the 2009-10 season. With all 12 players returning from a year ago, along with an incoming freshman class ranked as high as ninth in the land, expectations are high as Notre Dame looks to not only reach a new level of success, but also wash away the bitter taste left by a first-round loss in last year's NCAA tournament.

Setting the tone for the Irish will be a trio of senior captains, including returning all-BIG EAST Conference guards **Lindsay Schrader** and **Ashley Barlow**, both of whom also were tabbed for this year's preseason all-conference team. Schrader was a first-team all-BIG EAST pick last season after piling up career bests of 12.6 points and 7.4 rebounds per game. In addition, she registered seven double-doubles, setting a new single-season school record for guards, and now has 11 career double-doubles, one off the mark for guards set by current Irish assistant coach **Niele Ivey** from 1996-2001.

Meanwhile, Barlow led the team in scoring last season at 12.7 points per game, and also logged 70 steals (2.4 spg.), making her only the fourth player in school history to record 60+ steals in three consecutive seasons. The Indianapolis native also made an early statement about her intentions this season, notching a team-high 13.0 ppg. with a .727 three-point

percentage (8-11) and .577 field goal percentage during Notre Dame's three-game, 11-day European tour in May 2009.

Completing this leadership triumverate is point guard **Melissa Lechlitner**. As a first-year starter in 2008-09, Lechlitner averaged personal bests of 10.6 points and 3.4 assists per game, driving the Irish offense with a steady hand.

Another first-year starter who made huge strides last season was junior forward **Becca Bruszewski**. The Valparaiso product doubled her averages in scoring (10.7 ppg.) and rebounding (5.0 rpg.), while honing a reliable three-point shot to the tune of a team-high .375 percentage from beyond the arc.

Not to be overlooked are a pair of returning BIG EAST All-Freshman Team picks in rapidly-maturing sophomore guard **Natalie Novosel** (6.9 ppg., 45 steals in 2008-09) and sophomore forward **Erica Solomon** (6.0 ppg., 1.2 bpg.), as well as their classmates in forward **Kellie Watson** (3.8 ppg., 28 3FGM) and **Fraderica Miller** (0.7 ppg., 0.7 spg.).

In addition, Notre Dame could get a significant boost this year from incoming freshman guard **Skylar Diggins**, a three-time high school All-American from South Bend's Washington High School, who averaged 25.8 points, 5.7 rebounds and 5.6 assists per game during her prep career. The other Irish rookie guard, **Kaila Turner** of Joliet, Ill., has incredible upside as well, having twice earned all-state honors at Marian Catholic High School.

Covering the Irish

## Notre Dame Sports Information

C112 Joyce Center, Second Floor  
Notre Dame, IN 46556  
phone (574) 631-7516 // fax (574) 631-7941  
Chris Masters, Asst. Sports Information Director (WBB)  
masters.5@nd.edu // cell (574) 532-4166

## Media Services

The official Notre Dame athletics web site contains schedules, rosters, updated statistics and some historical information from previous seasons. High-resolution color headshots and action photos of Notre Dame players, coaches and staff are available upon request.

**Official Notre Dame athletics web site:**

• <http://www.UND.com>

## In-Season Interview Policy

All requests for Notre Dame player, coach or staff interviews must be made through **Chris Masters** and 24 hours' notice is appreciated. Please be aware that student-athletes' academic obligations always take precedence before any interview requests.

Media members also may speak to Irish team personnel before or after practice sessions. While most practices are open to the media, some may be closed at the coaching staff's discretion — contact **Chris Masters** for the latest practice schedule and availability.

On game days, no interviews will be granted with any Notre Dame player or coach prior to competition.

## Credentials / Parking

Season credentials will be issued to all media covering the Irish on a regular basis. Please note — any Notre Dame men's basketball season credential also offers access to all Irish women's basketball games.

For single-game credentials, contact **Chris Masters** no later than 24 hours before tipoff. Credential requests may be submitted via phone, fax or e-mail. Passes will be left at the media will call entrance (Gate 1) of Purcell Pavilion.

Parking is free for all Irish women's basketball games in the large lot south of Purcell Pavilion. Due to construction in the vicinity of the arena, there are no designated parking lots or specific parking passes for media members.

**Credentials remain the property of the University of Notre Dame and may be revoked at any time.**

## Game Notes

Notre Dame's game notes package is completed and made available on-line through the official Irish athletics web site during the season, usually at least one day prior to tipoff. Notre Dame's game notes are in Adobe PDF format and will be distributed via *electronic means only* (e-mail or web). Fax distribution is by request only.

Please contact **Chris Masters** if you wish to be added to the e-mail distribution list for Notre Dame's regular women's basketball releases.

## Gameday Services

Gameday packages containing game notes, programs and other information will be available prior to all home contests. A pre-game meal also will be served in the Monogram Room media area (exit through stands above Gate 8 to right of press row, entrance on right after exiting outer concourse doors) beginning 75 minutes before tipoff.

A bank of statistics monitors is located on press row for the media's convenience. Final statistics books include an official NCAA box score and play-by-play. Telephone, copier and fax services are available on a first-come, first-served basis. Purcell Pavilion also offers wireless Internet capability — check with **Chris Masters** for access.

## Post-Game Interviews

Following each Notre Dame home game, Irish head coach **Muffet McGraw** and selected players, followed by the visiting head coach and selected players, will be available to speak with the media. Post-game press conferences are held in the Hammes Auditorium, located between Gates 1 & 2 on the first floor of Purcell Pavilion (exit court via Gate 1 ramp on opposite end of court from press row, go straight and turn right at the Notre Dame women's basketball office; auditorium entrance will be on your left).

Media members should submit player requests for post-game interviews to **Chris Masters** at the final media timeout of the second half.

## LAST IRISH GAME

#4 Notre Dame 97, Indianapolis 53  
*Exhibition Game*  
November 1, 2009  
Purcell Pavilion (Notre Dame, Ind.)

### Indianapolis (53)

Player	min	fg-a	3fg-a	ft-a	reb	ast	pf	tp
Fenneman	20	0-1	0-0	0-2	5	1	1	0
Meissel	25	4-11	0-3	4-5	4	1	0	12
Dewey	26	3-3	2-2	8-10	1	1	3	16
Canary	18	1-2	1-1	0-0	4	4	2	3
Keegan	26	0-4	0-1	3-4	3	0	4	3
Lyons	21	3-9	0-0	1-4	2	0	0	7
Rourk	13	1-2	0-0	0-0	1	0	5	2
Wenning	11	1-1	1-1	0-0	2	0	2	3
Gardner	19	1-1	1-1	2-4	2	3	1	5
Gonser, H.	10	0-0	0-0	0-0	0	1	0	0
Gonser, N.	11	0-2	0-0	2-2	0	0	1	2
Team					6			
<b>Totals</b>	<b>200</b>	<b>14-36</b>	<b>5-9</b>	<b>20-31</b>	<b>30</b>	<b>11</b>	<b>23</b>	<b>53</b>

### Notre Dame (97)

Player	min	fg-a	3fg-a	ft-a	reb	ast	pf	tp
Bruszewski	18	2-10	1-1	0-0	4	2	3	5
Barlow	18	4-6	1-2	3-4	3	2	3	12
Novosel	22	3-9	2-4	5-6	6	3	3	13
Lechlitner	20	2-7	0-2	0-0	3	3	1	4
Schrader	22	5-12	0-1	0-1	6	0	1	10
Solomon	16	4-7	0-0	9-14	6	0	3	17
Diggins	20	6-10	1-1	4-4	4	1	4	17
Miller	19	0-0	0-0	2-2	6	3	2	2
Turner	17	0-2	0-0	2-2	1	0	3	2
Mallory	23	5-8	2-4	0-0	1	4	1	12
Christiansen	5	1-1	1-1	0-0	0	0	0	3
Team					4			
<b>Totals</b>	<b>200</b>	<b>32-72</b>	<b>8-16</b>	<b>25-33</b>	<b>44</b>	<b>18</b>	<b>24</b>	<b>97</b>

Indianapolis 22 31 — 53  
Notre Dame 42 55 — 97

**FG Pct:** Indianapolis 38.9, Notre Dame 44.4. **3-PT FG Pct:** Indianapolis 55.6, Notre Dame 50.0. **FT Pct:** Indianapolis 64.5, Notre Dame 75.8. **Turnovers:** Indianapolis 36, Notre Dame 13. **Blocked Shots:** Indianapolis 1, Notre Dame 2. **Steals:** Indianapolis 11 (Dewey 3), Notre Dame 22 (Solomon 4). **Attendance:** 7,508.

## Potent Notables About The Fighting Irish

- Notre Dame is among the nation's winningest programs during the past 13 seasons (1996-97 to present), ranking seventh with 314 victories.
- Notre Dame has ranked among the top 20 in the nation in attendance each of the past nine seasons. Last year, the program finished ninth in the country for the second year in a row with an average of 7,168 fans for its 13 home games (the second-highest single-season attendance average in school history). The Irish also have drawn 5,000-or-more fans to 124 of their last 126 home games, including six Purcell Pavilion sellouts (most recently on Dec. 7, 2008 vs. Purdue).
- The Irish have become a regular fixture in the WNBA Draft in recent years, as seven Notre Dame players have been selected in the past nine seasons. **Charel Allen** was the most recent Irish player to be chosen, going to the Sacramento Monarchs in the third round (43rd overall pick) of the 2008 WNBA Draft. **Ruth Riley** (San Antonio) was active in the league during the '09 season, helping the Silver Stars return to the playoffs for the third consecutive season. Three of Notre Dame's eight WNBA alums have won a total of four league championships — Riley won a pair of crowns with the Detroit Shock (2003

### Winningest Teams (1996-97 to present)

436	Connecticut
410	Tennessee
373	Duke
339	Louisiana Tech
331	Old Dominion
329	Purdue
◆314	<b>NOTRE DAME</b>

NOTE: through games of Nov. 14.



## 2009-10 Standings (thru Nov. 14)

	BIG EAST		Overall	
	W	L	W	L
(1/1) Connecticut	0	0	1	0
(-/rv) Georgetown	0	0	1	0
(17/25) DePaul	0	0	1	0
Marquette	0	0	1	0
Providence	0	0	1	0
Seton Hall	0	0	1	0
(-/rv) Syracuse	0	0	1	0
(-/rv) West Virginia	0	0	1	0
Cincinnati	0	0	0	0
(23/19) Louisville	0	0	0	0
<b>◆(4/7) NOTRE DAME</b>	<b>0</b>	<b>0</b>	<b>0</b>	<b>0</b>
(rv/22) Pittsburgh	0	0	0	0
(25/rv) Rutgers	0	0	0	0
St. John's	0	0	0	0
Villanova	0	0	0	0
(-/rv) South Florida	0	0	0	1

(n) Ranking in preseason AP/ESPN-USA Today polls

## Player of the Week

Selections begin Nov. 23

## Freshman of the Week

Selections begin Nov. 23

## Upcoming BIG EAST Games

### Sunday, November 15

Louisville at Dayton	1:00p
Stanford at Rutgers (FIOS TV)	2:00p
Saint Joseph's (Pa.) at Providence	2:00p
St. John's at Stony Brook	2:00p
<b>Arkansas-Pine Bluff at Notre Dame</b>	<b>7:00p</b>
Furman at Cincinnati	7:00p
North Dakota State at DePaul	7:00p

### Monday, November 16

St. Peter's at South Florida	5:00p
Marquette at Michigan (BTN)	6:30p
Seton Hall at Marshall	7:00p
Presbyterian at Syracuse	7:00p
Villanova at Sacred Heart	7:00p
Preseason WNIT - Second Round	
Marist at West Virginia	7:00p

### Tuesday, November 17

North Florida at Pittsburgh	11:00a
Louisville at Hartford	7:00p
Kean at Rutgers	7:30p
ESPNU Road to the Championship (San Antonio, Texas)	
Connecticut vs. Texas (ESPN2)	9:30p

### Wednesday, November 18

South Florida at Wake Forest	5:00p
St. John's at Massachusetts	5:30p
Cincinnati at Indiana	7:00p
Georgetown at James Madison	7:00p
Penn at Villanova	7:00p

### Thursday, November 19

<b>Notre Dame at Michigan State (BTN)</b>	<b>6:00p</b>
Alabama State at Syracuse	7:00p
Boston College at Rutgers (FIOS TV)	7:30p
Creighton at Marquette	8:00p

• - indicates BIG EAST Conference game  
All times Eastern and subject to change

Around the BIG EAST

Finals MVP, 2006), **Coquese Washington** toiled for the 2000 Houston Comets, while **Jacqueline Batteast** was Riley's teammate on the '06 title-winning squad in Detroit.

- For the third year in a row, the Irish posted a perfect 100-percent Graduation Success Rate (GSR), according to figures released by the NCAA in October 2008. What's more, since **Muffet McGraw** became the Irish head coach in 1987, every Notre Dame women's basketball player that has completed her athletic and academic eligibility at the University has graduated (a 57-for-57 success rate), with all five members of this year's senior class on target to graduate by May 2010 (**Lindsay Schrader** and **Erica Williamson** will complete work on their degrees in December 2009).

## A Quick Look At Arkansas-Pine Bluff

Arkansas-Pine Bluff returns five letterwinners, including three starters from last year's 12-19 club that tied for fourth in the Southwestern Athletic Conference race with a 10-8 record. The Lady Lions also advanced to the semifinals of the SWAC Tournament before bowing to eventual league champion, Prairie View A&M, 71-60.

Sunday night's contest at Notre Dame is the back half of a demanding opening weekend road trip for UAPB, which tipped off its season Friday with a 106-48 loss at Mississippi State. Junior guard **LaQuisha Slaton** was the lone Lady Lion to score in double figures, coming off the bench to finish with 10 points, while junior guard/forward **Rekevia Brown** added seven points and a team-high eight rebounds.

Collectively, Pine Bluff shot 25.4 percent from the floor (15-of-59), including 3-of-19 (.158) from three-point range, turned the ball over 27 times and found itself on the short end of a 71-43 rebounding margin.

Slaton and senior center **Shay Holmes** both were preseason second-team all-SWAC selection, with Slaton averaging a team-best 11.8 points and 2.5 assists per game last year. Meanwhile, Holmes logged 10.7 points and 6.8 rebounds a night, even though she came off the bench in 24 of 26 games.

Head coach **Cary Shelton** is in his first season at UAPB (and as a head coach), following four seasons as an assistant on both the Lion men's and women's basketball teams.

## The ND-Arkansas-Pine Bluff Series

Notre Dame and Arkansas-Pine Bluff will be meeting on the hardwood for the first time on Sunday night.

## Other ND-Arkansas-Pine Bluff Series Tidbits

- UAPB is the lone first-time opponent on Notre Dame's regular-season schedule this year.
- The Lady Lions will be the 179th different opponent in the 33-year history of Notre Dame women's basketball.
- Notre Dame is 39-5 (.886) against first-time opponents since joining the BIG EAST Conference in 1995-96, including a 19-1 (.950) mark vs. new teams since the start of the

2000-01 season with a current 14-game overall winning streak. The last first-time opponent to defeat Notre Dame was Colorado State, which earned a 72-66 victory on Nov. 21, 2001, in Fort Collins, Colo. — and the Irish responded by knocking off the Rams in each of the following three seasons.

- Last season, Notre Dame played a pair of first-time opponents, defeating both Georgia Southern (85-36 at home) and Charlotte (68-61 on the road).
- The Irish have won 17 consecutive home games against new opposition, dating back to Jan. 18, 1996, when Connecticut posted an 87-64 win at the Joyce Center.
- Not only will this be the first time Notre Dame and Arkansas-Pine Bluff have played in the sport of women's basketball, it's slated to be the first head-to-head matchup in any team sport for the Irish and Lions.
- Notre Dame was victorious in its only prior matchup against a school from the state of Arkansas, downing Arkansas State, 77-54, on Dec. 17, 2005 in a Gray Division first-round game at the Duel in the Desert in Las Vegas. Current Irish fifth-year senior guard **Lindsay Schrader** started and played 26 minutes in that contest, logging six points, a team-high eight rebounds and four assists.

## ND vs. Southwestern Athletic Conference

Notre Dame has played two Southwestern Athletic Conference (SWAC) opponents in its history, defeating both by an average of 44.0 points per game.

On March 17, 2001, the Irish tipped off their run to the national championship with a 98-49 win over SWAC champion Alcorn State at the Joyce Center behind 16 points from consensus national player of the year Ruth Riley.

More recently on Dec. 28, 2006, Notre Dame toppled Prairie View A&M, 94-55, at the Joyce Center, getting a (then) career-high 21 points and nine rebounds from then-freshman (and current senior) guard **Ashley Barlow**, who also tied school and arena records by going a perfect 13-of-13 from the free throw line.

Other active Irish players who appeared in that PVAMU game included: center **Erica Williamson** (15 points on 7-8 FG, eight rebounds, four blocks) and point guard **Melissa Lechlitner** (four points, six assists, four steals), while current fifth-year senior guard **Lindsay Schrader** was sidelined that season with a torn ACL in her right knee (allowing her to return for her final season in 2009-10).

ND vs. First-Time Opponents Since '00-01		
11/27/00	Fordham*	W, 89-44
12/31/00	Rice*	W, 80-40
1/3/01	Va. Tech	W, 75-64
<b>3/17/01</b>	<b>Alcorn St.*</b>	<b>W, 98-49</b>
3/24/01	Utah	W, 69-54
11/21/01	Colorado St.	L, 66-72
11/26/01	Army*	W, 89-57
3/15/02	New Mexico	W, 58-44
3/25/03	Kansas St.	W, 59-53
11/14/03	Auburn	W, 77-64
3/23/04	Middle Tenn.*	W, 59-46
12/17/05	Arkansas St.	W, 77-54
12/16/06	IUPUI*	W, 75-65
<b>12/28/06</b>	<b>Prairie View*</b>	<b>W, 94-55</b>
3/18/07	California	W, 62-59
11/13/07	W. Kentucky*	W, 78-59
11/27/07	Canisius*	W, 93-47
12/29/07	St. Francis (Pa.)*	W, 82-39
11/25/08	Ga. Southern*	W, 85-36
12/28/08	Charlotte	W, 68-61

\* = home game (SWAC teams in bold)  
NCAA tournament games in italics





## Blowing The Lid Off

Notre Dame is 24-8 (.750) all-time in season openers and carries a 14-game winning streak into Sunday's game against Arkansas-Pine Bluff. The Irish also are 19-3 (.864) in season openers during the **Muffet McGraw** era (since 1987-88), with their last season-opening loss coming on Nov. 26, 1994 (65-60 in overtime at No. 25 Seton Hall). Last year, Notre Dame opened with a 62-53 win at No. 24/22 LSU in the State Farm Tip-Off Classic.

The Irish also are 24-8 (.750) all-time in home openers, with an 18-4 (.818) mark under McGraw, following a 96-61 win over Evansville in their Purcell Pavilion lidlifter last season.

## Notre Dame Picked Second In 2009-10 BIG EAST Coaches' Preseason Poll

Notre Dame was selected to finish second in the BIG EAST Conference in 2009-10, according to a preseason vote of the league's 16 head coaches released Oct. 22 during the annual BIG EAST Women's Basketball Media Day at the ESPN Zone in New York City.

The Fighting Irish picked up 210 points and one first-place vote in the balloting (coaches may not vote for their own teams), placing behind only defending national champion Connecticut, which was a unanimous choice to win the conference title with 225 points. DePaul and reigning NCAA runner-up Louisville shared the third spot in the BIG EAST preseason poll with 171 points, while Pittsburgh rounded out the top five with 167 points.

## Trio Of Irish Earn 2009-10

### Preseason All-BIG EAST Honors

Along with picking Notre Dame to finish second in the conference this year in their preseason poll, the BIG EAST coaches voted fifth-year senior guard/tri-captain **Lindsay Schrader** and senior guard/tri-captain **Ashley Barlow** to the 12-player Preseason All-BIG EAST Team.

Schrader, a two-time all-conference selection, garnered first-team recognition last year after averaging career highs of 12.6 points and a team-best 7.4 rebounds per game with a .463 field goal percentage. What's more, she registered seven double-doubles, setting a single-season school record for guards, and giving her 11 career double-doubles, one behind current assistant coach **Niele Ivey** for the Notre Dame all-time record for guards in that category.

Meanwhile, Barlow is another returning two-time all-BIG EAST honoree, having copped second-team laurels a season ago with a team-high 12.7 points, 4.8 rebounds and 2.4 steals per game, as well as a career-high .364 three-point percentage. Barlow is one of only four players in school history to record at least 60 steals in three consecutive seasons (she had a career-high 70 thefts last year) and she and Schrader both are members of Notre Dame's 1,000-Point Club -- Barlow is 20th in program history with 1,107 points, while Schrader is 23rd all-time with 1,057 points.

In addition to the preseason accolades for the two Fighting Irish veterans, rookie guard **Skylar Diggins** was a unanimous choice as the BIG EAST Preseason Freshman of the Year,

## Notre Dame In the Polls

### Associated Press Poll

Week	Points	Rank	Weeks Ranked	
			09-10	All Time
Oct. 30, 2009 (Pre)	799	4	1	179
<b>SEASON HIGHS</b>	<b>799</b>	<b>4</b>	<b>1*</b>	<b>39*</b>

### ESPN/USA Today/WBCA Coaches' Poll

Week	Points	Rank	Weeks Ranked	
			09-10	All Time
Nov. 4, 2009 (Pre)	438	7	1	171
<b>SEASON HIGHS</b>	<b>438</b>	<b>7</b>	<b>1*</b>	<b>1*</b>

\* = current streak of poll appearances

according to the league's head coaches. Diggins was the consensus 2008-09 national high school player of the year, and also was named the '08-09 Gatorade National High School Female Athlete of the Year (for all sports) during a ceremony held just prior to the ESPY Awards this past summer in Los Angeles.

Diggins averaged 29.0 points and 6.3 assists per game as a senior last season, leading Washington High School to the cusp of the Indiana Class 4A title and the mythical prep national championship before a last-second loss in the final. She went on to earn MVP honors at both the McDonald's and Women's Basketball Coaches Association (WBCA) High School All-America Games (joining former Tennessee guard **Alexis Hornbuckle** as the only players ever to pull off that double) and she was a co-captain on the 2009 USA Basketball U19 World Championship Team that won the gold medal at the FIBA U19 World Championships in Bangkok, Thailand, back in August.

## Polling Station

Notre Dame is ranked fourth in the 2009-10 preseason Associated Press poll, released on Oct. 30. Not only is it the 39th consecutive AP poll appearance for the Irish, but it's also the highest preseason AP ranking ever for Notre Dame, topping its No. 6 debut in the 2000-01 poll.

With their current poll position, the Irish now have appeared in the top 10 of the AP poll during 10 of the past 14 seasons (1996-97 through 2009-10) with their No. 4 ranking being the highest for the program since the week of Jan. 4, 2005, when the Irish also rose to fourth following a 12-1 start and the 2004 Preseason WNIT title.

Notre Dame has been ranked in the AP poll for 179 weeks during the program's 33-year history, with every one of those appearances coming in the **Muffet McGraw** era (since 1987-88). McGraw ranks 12th among all active NCAA Division I head coaches for weeks in the AP poll, and also is 23rd all-time in that category.

In addition, the Irish are ranked seventh in the preseason ESPN/USA Today/WBCA coaches'

### AP Poll Appearances

#### Active D-I Coaches

- Summitt (Tenn) 562
- Landers (UGa) 432
- Stringer (RU) 388
- Chancellor (LSU) 243
- Blair (TAMU) 209
- McGraw (ND) 179**

#### All-Time D-I Coaches

- Summitt (Tenn) 562
- Landers (UGa) 432
- Conrad (Texas) 395
- Blair (TAMU) 209
- Sanderford (WKU) 182
- McGraw (ND) 179**

NOTE: through Oct. 30 AP poll

National Polls

## Associated Press Poll

• October 30, 2009: Poll #1 (Preseason)

Team (First-Place Votes)	Rec	Pts	LP
<b>1</b> ♦Connecticut (40)	0-0	1,000	1
2 Stanford	0-0	951	2
3 Ohio State	0-0	862	10
<b>4</b> <b>NOTRE DAME</b>	<b>0-0</b>	<b>799</b>	<b>23</b>
5 North Carolina	0-0	798	11
6 Duke	0-0	772	6
7 Baylor	0-0	744	5
8 Tennessee	0-0	676	18
9 LSU	0-0	600	—
<b>10</b> ♦Michigan State	<b>0-0</b>	<b>521</b>	—
11 Xavier	0-0	492	20
12 Texas	0-0	487	25
<b>13</b> ♦Oklahoma	<b>0-0</b>	<b>444</b>	<b>4</b>
14 Virginia	0-0	394	24
15 Florida State	0-0	385	12
16 Arizona State	0-0	317	19
<b>17</b> ♦DePaul	<b>0-0</b>	<b>301</b>	—
18 California	0-0	294	13
19 Georgia Tech	0-0	262	—
20 Kansas	0-0	241	—
21 Georgia	0-0	201	—
<b>22</b> ♦Vanderbilt	<b>0-0</b>	<b>165</b>	<b>14</b>
<b>23</b> ♦Louisville	<b>0-0</b>	<b>156</b>	<b>7</b>
24 Middle Tennessee	0-0	143	—
<b>25</b> ♦Rutgers	<b>0-0</b>	<b>138</b>	—

Others Receiving Votes: Texas A&M 137, Maryland 114, Mississippi State 110, ♦San Diego State 78, South Dakota State 70, ♦Pittsburgh 48, ♦Purdue 45, Kansas State 33, Gonzaga 30, Marist 26, UCLA 26, Michigan 16, Iowa State 14, Minnesota 14, Boston College 12, Louisiana Tech 11, Tulane 9, Bowling Green 8, Arkansas 7, TCU 7, Wisconsin-Green Bay 7, Auburn 6, Nebraska 6, Texas Tech 6, USC 5, Florida 3, Fresno State 3, Oklahoma State 3, Delaware 1, Florida Gulf Coast 1, Temple 1.

## ESPN/USA Today/WBCA Coaches' Poll

• November 4, 2009: Poll #1 (Preseason)

Team (First-Place Votes)	Rec	Pts	LP
<b>1</b> ♦Connecticut (31)	0-0	775	1
2 Stanford	0-0	739	3
3 Ohio State	0-0	653	9
4 Baylor	0-0	649	6
5 North Carolina	0-0	561	17
6 Duke	0-0	547	14
<b>7</b> <b>NOTRE DAME</b>	<b>0-0</b>	<b>438</b>	—
<b>8</b> ♦Oklahoma	<b>0-0</b>	<b>416</b>	<b>4</b>
9 Tennessee	0-0	412	—
<b>10</b> ♦Michigan State	<b>0-0</b>	<b>353</b>	<b>22</b>
11 Arizona State	0-0	328	12
12 Florida State	0-0	323	18
13 California	0-0	314	10
14 Texas	0-0	311	—
15 Xavier	0-0	303	25
16 Texas A&M	0-0	302	7
17 LSU	0-0	298	—
18 Virginia	0-0	246	24
<b>19</b> ♦Louisville	<b>0-0</b>	<b>232</b>	<b>2</b>
<b>20</b> ♦Vanderbilt	<b>0-0</b>	<b>223</b>	<b>8</b>
21 Maryland	0-0	209	5
<b>22</b> ♦Pittsburgh	<b>0-0</b>	<b>127</b>	<b>15</b>
<b>23</b> ♦Purdue	<b>0-0</b>	<b>126</b>	<b>16</b>
24 Iowa State	0-0	125	11
<b>25</b> ♦DePaul	<b>0-0</b>	<b>121</b>	—

Others Receiving Votes: Middle Tennessee 118, Kansas 110, ♦Rutgers 106, Auburn 84, Georgia 76, Georgia Tech 73, South Dakota State 70, Mississippi State 66, Gonzaga 48, ♦San Diego State 39, Kansas State 39, Florida 31, TCU 12, North Carolina State 11, Arizona 10, Michigan 10, Bowling Green 7, ♦South Florida 6, ♦Syracuse 6, ♦South Carolina 3, ♦Georgetown 2, Arkansas-Little Rock 2, Ball State 2, Richmond 2, SMU 2, Temple 2, ♦Central Florida 1, ♦Charlotte 1, ♦West Virginia 1, Fresno State 1, Hartford 1, Minnesota 1, Western Kentucky 1.

LP = last poll

♦ = 2009-10 Notre Dame opponent





## First Meeting

Ark-Pine Bluff Series

poll — this year's No. 7 preseason ranking is the second-highest in program annals trailing only a No. 5 debut in 2000-01. It's also the second consecutive season Notre Dame has been ranked in the top 10 of the coaches' poll, as well as eight of the past 12 campaigns (1998-99 to present).

Notre Dame was ranked in the coaches' survey for 38 consecutive weeks before falling just outside the Top 25 in the final poll of last season. With their '09-10 preseason return, the Irish now have appeared in the coaches' poll for 171 weeks during their history (all coming during McGraw's tenure).

### More Polling Data

Notre Dame head coach **Muffet McGraw** is one of 24 people in NCAA Division I women's basketball history who have both played for and coached a team that has appeared in the Associated Press Top 25 poll.

Besides her 179 AP poll appearances while coaching at Notre Dame, McGraw was the starting point guard at Saint Joseph's (Pa.) as a senior in 1977, helping the Hawks rise to No. 3 in the nation. Of the 24 people on this list, 12 currently are NCAA Division I head coaches (see accompanying chart).

#### AP Poll Appearances As Player & Coach (active coaches only)

- Amanda Butler (Florida)
- June Daugherty (Wash. St.)
- Nell Fortner (Auburn)
- MaChelle Joseph (Ga. Tech)
- Wendy Lary (ODU)
- Joanne McCallie (Duke)
- Kathy McConnell-Miller (Colo.)
- ◆Muffet McGraw (ND)
- Kim Mulkey (Baylor)
- Kathy Olivier (UNLV)
- Dawn Staley (S. Carolina)
- Charli Turner Thorne (Ariz. St.)

NOTES: Current teams listed ... all coaches shown have made AP poll with current teams except Daugherty (did so at Boise State and Washington), Olivier (UCLA) and Staley (Temple) ... Butler, Lary and Olivier are coaching at their alma maters.

### Exhibition Game Recap: Indianapolis

Sophomore forward **Erica Solomon** and freshman guard **Skylar Diggins** each came off the bench to score a game-high 17 points, leading six Notre Dame players in double figures as the fourth-ranked Fighting Irish rolled past the University of Indianapolis, 97-53, in an exhibition game on Nov. 3 before a record-setting crowd of 7,508 fans (the largest ever to witness a Notre Dame preseason contest) in the first women's basketball game at the newly-refurbished Purcell Pavilion at the Joyce Center.

Solomon also shared game-high honors with six rebounds and snared a game-best four steals, all in just 16 minutes of action. Meanwhile, Diggins connected on 6-of-10 shots from the floor (including her lone three-point attempt), grabbed four rebounds, all on the offensive glass, and added three steals for good measure. Sophomore guard **Natalie Novosel** made the most of her first starting assignment, getting the Fighting Irish off on the right foot in the first half before finishing with 13 points, six rebounds and three steals.

Senior guard/tri-captain **Ashley Barlow** tossed in 12 points, as did junior guard **Brittany Mallory**, the latter tacking on a game-high four assists while playing a team-high 23 minutes in her first action since missing all but seven games last season with a torn anterior cruciate ligament (ACL) in her left knee. Fifth-year senior guard/tri-captain **Lindsay Schrader** rounded out Notre Dame double-digit scoring parade with 10 points and six rebounds.

**Katie Dewey** led Indianapolis with 16 points,

and **Samantha Meissel** added 12 points for the Greyhounds, who were ranked fourth in the preseason Division II polls and were coming off a 67-56 exhibition win at Division I member Valparaiso two nights earlier.

Notre Dame's renewed sense of urgency on the defensive end of the floor this season showed in its preseason tilt, as the Fighting Irish forced 36 turnovers, coming up with 22 steals. They also easily won the rebounding battle by a 44-30 margin (allowing just five offensive boards) and held Indianapolis to a .389 field goal percentage (14-of-36). In fact, the Greyhounds did as much of their offensive damage at the foul line, trying almost as many free throws as field goals (20-of-31 at the stripe).

On offense, the Fighting Irish shot .444 from the floor (32-of-72), including a sharp 8-of-16 from the three-point line. Notre Dame also worked its way to the free throw line, making 25-of-33 charities (.758) on the night.

After taking the first few minutes to shake loose the rust from the off-season, Notre Dame went on an 11-0 run, fueled by five steals and a pair of transition layups, to take a 15-4 lead and force Indianapolis to burn a timeout with 14:23 left in the first half. The Greyhounds then answered back with their best offensive push of the evening, mounting a 10-2 charge that was capped by Dewey's three-pointer with 9:47 remaining. Although neither side knew it at the time, UIndy wouldn't make another shot from the field for the rest of the first half.

Leading 20-16, the Fighting Irish blew the game wide open by closing the period on a 22-6 run. Novosel knocked down a pair of three-pointers during the spurt, while junior forward **Becca Bruszewski** scored all five of her points in that stretch. Notre Dame forced five turnovers along the way, and the only saving grace for Indianapolis seemed to be the respite it enjoyed at the foul line, going 6-of-11 from the charity stripe over the final eight minutes, but still trailing by a 42-22 count.

However, the feisty Greyhounds weren't about to go quietly, as they ended a field goal drought of 10:18 with **Jessica Canary's** three-pointer 31 seconds into the second half. Meissel followed with a jumper in the lane to trim the lead to 15 points and Notre Dame head coach **Muffet McGraw** quickly used a timeout to settle her troops. Out of the break, the Fighting Irish briskly scored seven points (five from Barlow) and Indianapolis never got closer than 19 points the rest of the way.

As it turned out, the primary drama down the stretch was whether Notre Dame would send the Purcell Pavilion faithful home with full bellies, thanks to its popular Big Mac giveaway when the team scores 88 points in a game. Solomon did the honors, hitting a pair of free throws with 4:05 to play.

### Noting The Indianapolis Game

- Notre Dame improves to 30-1 (.968) in exhibition games in the past 17 seasons (1993-94 to present), while stretching its preseason winning streak to 25 games; the only loss for the Fighting Irish in that time was a 94-89 defeat at the hands of the Lithuanian National Team in 1996.

### THE TALE OF THE TAPE\*

	ND	UAPB
Overall record	22-9	12-19
Conference record	10-6	10-8
AP/ESPN-USA Today rank	4/7	-
<b>SCORING</b>		
Points scored per game	71.5	60.4
Points allowed per game	62.3	68.8
Field goal percentage	.431	.373
Three-point percentage	.334	.286
Free throw percentage	.704	.686
<b>REBOUNDING</b>		
Rebounds per game	39.7	36.8
Opponent rebs. per game	37.4	41.7
Rebounding margin	+2.3	(-4.9)
<b>OTHER</b>		
Assists per game	14.7	11.0
Turnovers per game	15.6	21.1
Assist/turnover ratio	0.94	0.52
Blocked shots per game	3.9	1.3
Steals per game	9.8	8.8

\* = final 2008-09 records and statistics listed





- Notre Dame's 97 points were the fifth-most ever scored by the Fighting Irish in exhibition play, and the most they have scored in the preseason since Nov. 14, 2000, when they knocked off Tapiolan Honka, an all-star team from Finland, by a 98-53 score.
- Notre Dame is 9-0 against College Division opponents (Division II, Division III or NAIA) since NCAA rules allowed teams to play exhibitions against those schools earlier this decade — the Fighting Irish have won their last four exhibition games (dating back to 2007-08) against Division II schools by an average of 48.5 points per game.
- In their last two preseason games, the Fighting Irish have forced a combined total of 82 turnovers (46 last year vs. Gannon, 36 vs. Indianapolis).
- Notre Dame and Indianapolis also had played a preseason game on Nov. 5, 2005, when the Fighting Irish winning that night, 84-59.
- The crowd of 7,508 was the largest ever to see a Notre Dame women's basketball exhibition game, topping the old record of 6,996 set on Nov. 13, 2001, for an 87-39 win over Christian Brothers University (from Memphis, Tenn.).
- Had it been a regular season game, Solomon's 17 points and four steals would have been a career best, topping her 15 points at Boston College on Nov. 23, 2008, and the three steals at Valparaiso on Dec. 13, 2008; interestingly, that BC game also saw Solomon post a "point-a-minute" performance with 15 points in 14 minutes.
- The 17 points from Solomon and Diggins were the most by a Notre Dame player in an exhibition game since Nov. 1, 2007, when current senior center **Erica Williamson** scored 18 points in a 90-38 win over Southern Indiana.
- Novosel's off-season work on her three-point shot seemed to pay dividends, as she went 2-of-4 from distance after going 1-for-10 on three-pointers last year.
- All 11 Notre Dame players that dressed for the game not only played, but got in the scoring column, as freshman guard **Kaila Turner** capped the night with two free throws in the final minute.

### Irish Enjoy Successful '09 European Tour

In May, the Notre Dame women's basketball program embarked on a memorable 11-day adventure to France, Monaco and Italy, visiting some of the world's most historic landmarks, including the Eiffel Tower in Paris, the Prince's Palace in Monaco, picturesque Lake Como in the foothills of the Italian Alps, the famed *El Duomo* cathedral in Milan, the Colosseum and Forum in Rome, as well as St. Peter's Basilica and the Sistine Chapel located at The Vatican.

The Irish also had the chance to play three exhibition games against international opponents on the tour, winning all three contests against the French Junior National Team (77-44) and Italian professional teams GEAS Sesto San Giovanni (78-68) and Roma Athena Basket (94-39). The win over the French side was particularly noteworthy, as it came only weeks before

France won the gold medal at the European U20 Championships with much of the same team that faced the Irish in May.

Senior guard/tri-captain **Ashley Barlow** led Notre Dame in scoring (13.0 ppg.) and three-point percentage (.727, 8-11) on the trip, while junior forward **Becca Bruszewski** was second in scoring (12.0 ppg.) and fourth in rebounding (5.7 rpg.). Other statistical leaders included: fifth-year senior guard **Lindsay Schrader** and sophomore forward **Kellie Watson** (6.3 rpg.), sophomore guard **Natalie Novosel** (3.3 spg.), senior guard **Melissa Lechlitner** (3.3 apg.) and sophomore forward **Erica Solomon** (2.5 bpg.).

### Half And Half

During the past decade, Notre Dame has been nearly unbeatable when it has the lead at half-time. The Irish are 163-17 (.906) since the start of the 2000-01 campaign when they go into the dressing room with the lead, including wins in 91 of their last 102 such contests.

Last season, Notre Dame went 17-3 when it was ahead at the break, losing 63-59 in overtime at Michigan, 75-65 at Marquette and 58-47 to Villanova in the BIG EAST Championship quarterfinals at Hartford, Conn.

### The Best Offense Is A Good Defense...

During the past 15 seasons, Notre Dame has discovered that a solid defensive effort can almost certainly guarantee a victory. In fact, since the beginning of the 1995-96 season (Notre Dame's first in the BIG EAST Conference), the Irish have an amazing 195-14 (.933) record when they hold their opponents below 60 points in a game.

Notre Dame was 11-2 in such games last season, with wins over LSU, Boston College, Georgia Southern, Purdue, Valparaiso, Loyola-Chicago, Vanderbilt, Cincinnati, DePaul (second game), Providence and St. John's (second game).

As is often the case, both of last year's losses in this category came against Villanova and its methodical style of play — 55-48 in the regular season (at VU) and 58-47 in the BIG EAST Championship quarterfinals (at Hartford, Conn.).

### ...But Sometimes You Have To Score If You Want To Win

Not resting solely on its defensive laurels, Notre Dame also seemingly has found the magic mark when it comes to outscoring its opponents. During the past 15 seasons (since 1995-96), the Irish are 123-4 (.969) when they score at least 80 points in a game. The only blemishes on that record are a pair of overtime losses to Texas A&M (88-84) and Michigan State (87-83) in 1995, a 106-81 loss to Connecticut in 1998, and an 81-80 loss to DePaul in 2008.

Notre Dame scored at least 80 points in nine games last year, winning each time.

### Now That's A Home Court Advantage

One of the hallmarks of Notre Dame's success has been its stellar play at home. In fact, the

### 2008-09 Trends

#### Day of the Week

Sunday	5-3
Monday	1-0
Tuesday	6-3
Wednesday	1-2
Thursday	0-0
Friday	0-0
Saturday	9-1

#### Time of Game

Day games (before 6 p.m local time)	15-4
Night games (6 p.m. or later local time)	7-5

#### Location

Home games	11-3
Road games	10-5
Neutral site games	1-1

#### Halftime score

Leading at the half	17-3
Tied at the half	2-0
Trailing at the half	3-6

#### Individual scoring

Two or fewer double-figure scorers	1-4
Three double-figure scorers	9-4
Four double-figure scorers	8-1
Five or more double-figure scorers	4-0

#### Rebounding margin

Grab more rebounds than opponents	14-2
Grab same number of rebounds	1-1
Grab fewer rebounds than opponents	7-6

#### Field goal shooting

Higher pct. than opponent	17-1
Lower pct. than opponent	4-8
Same pct. as opponent	1-0
Shoot 45% or better	11-1
Shoot less than 45%	11-8
Hold opponent under 40%	15-2

#### Free throw margin

Make more free throws	17-2
Make same number of free throws	0-1
Make fewer free throws	5-6

#### Turnovers

Commit fewer turnovers	14-6
Commit same number of turnovers	1-2
Commit more turnovers	7-1

#### Miscellaneous

Vs. Top 25 (AP or ESPN/USA Today polls)	5-3
On commercial television	6-6
In white jerseys	9-0
In alternate white jerseys (green trim)	1-2
In alternate white jerseys (pink trim)	2-1
In blue jerseys	10-6
In green jerseys	0-0

#### Margin of Victory

1-5 points	3-2
6-10 points	8-5
11-15 points	2-2
16-20 points	3-0
21+ points	6-0
In overtime games	0-1

#### Conference Affiliation

Atlantic Coast	1-0
Atlantic 10	1-0
BIG EAST	11-7
Big Ten	2-2
Horizon League	2-0
Mid-American	1-0
Missouri Valley	1-0
Southeastern	2-0
Southern	1-0

#### Month

November	5-0
December	6-1
January	5-3
February	4-3
March	2-2





**Quick Facts**

### Notre Dame Quick Facts

**Official Name:** University of Notre Dame  
**Location:** Notre Dame, Ind.  
**Enrollment:** 8,371 (undergraduate) / 11,733 (overall)  
**Founded:** 1842  
**Colors:** Gold and Blue  
**Nickname:** Fighting Irish  
**School Fight Song:** Notre Dame Victory March  
**Conference:** BIG EAST  
**Arena:** Purcell Pavilion at the Joyce Center (cap. 9,149)  
**President:** Rev. John I. Jenkins, C.S.C.  
**Provost:** Thomas G. Burish  
**Executive Vice President:** John Affleck-Graves  
**NCAA Faculty Representative:** Patricia Bellia  
**Director of Athletics:** Jack Swarbrick  
**Senior Deputy Athletics Director/SWA:** Missy Conboy  
**Associate Athletics Director (WBB):** Jill Bodensteiner

**Head Coach:** Muffet McGraw (Saint Joseph's (Pa.) '77)  
**Record:** 584-238 (.710) - 28th season  
**At Notre Dame:** 496-197 (.716) - 23rd season  
**At Purcell Pavilion:** 246-51 (.828)  
**Associate Head Coach:**  
 Jonathan Tsipis (North Carolina '96) - 7th season  
**Assistant Coaches:**  
 Angie Potthoff-Barber (Penn State '97) - 5th season  
 Niele Ivey (Notre Dame '00) - 3rd season  
**Coordinator of Basketball Operations:**  
 Stephanie Menio (Pittsburgh '04) - 5th season  
**Administrative Assistant:** Tina Scott  
**Athletic Trainer:** Anne Marquez  
**Strength & Conditioning Coach:** Craig Cheek  
**Academic Counselor:** Chad Grotegut  
**Equipment Manager:** Kathy Speybroeck  
**Student Managers:**  
 Tom Bascik (Sr., Colonia, N.J.)  
 Bryant Walters (Sr., McLean, Va.)

### Women's Basketball History

**33rd Season:**  
 1st game, Dec. 3, 1977 vs. Valparaiso (W, 48-41)  
**All-Time Record:** 660-296 (.690)  
**Record At Purcell Pavilion:**  
 33rd season, 323-85 (.792)  
**Record In The BIG EAST:**  
 14th season, 176-56 (.759)  
**Conference/Membership Affiliations:**  
 AIAW D-III independent (1977-78 through 1979-80)  
 AIAW D-I independent (1980-81)  
 NCAA D-I independent (1981-82 through 1982-83)  
 North Star (1983-84 through 1987-88)  
 \*Midwestern Collegiate (1988-89 through 1994-95)  
 BIG EAST (1995-96 to present)  
**Regular-Season Conference Championships (8):**  
 North Star - 1985, 1986  
 \*Midwestern Collegiate - 1989, 1990, 1991, 1994, 1995  
 BIG EAST - 2001  
**Conference Tournament Championships (5):**  
 North Star - N/A  
 \*Midwestern Collegiate - 1989, 1990, 1991, 1992, 1994  
 BIG EAST - None  
**NCAA Championship Appearances (16):**  
 National Champion - 2001  
 Final Four - 1997, 2001  
 Elite 8 - 1997, 2001  
 Sweet 16 - 1997, 1998, 2000, 2001, 2003, 2004, 2008  
 Berths - 1994, 1996-2009  
**Consecutive NCAA Championship Appearances:**  
 14 (1996-2009)  
**NIT Appearances (4):**  
 1986 (3rd place), 1989 (7th place), 1991 (8th place),  
 1995 (3rd place)  
**Consecutive Postseason Appearances:**  
 16 (1994-2009); 15 NCAAAs, 1 NIT

\* - now known as the Horizon League

Irish have been virtually untouchable at home in recent years, winning 173 of their last 197 games (.878) at the 9,149-seat Purcell Pavilion, including winning streaks of 51 and 25 games in that span. Notre Dame also has a 99-17 (.853) record in BIG EAST Conference play at the Joyce Center, sporting a 31-game league winning streak at home before it ended with a 48-45 loss to Villanova in the '02 home finale.

The Irish have been particularly strong when it comes to non-conference games at home, winning 76 of their last 83 non-BIG EAST contests (.916) at the Joyce Center, dating back to the 1994-95 season. Five of the losses in that span came at the hands of Big Ten Conference opponents (four by 12 points or less) — Wisconsin in 1996 (81-69), Purdue in 2003 (71-54), Michigan State in 2004 (82-73 OT), Indiana in 2006 (54-51) and Minnesota in 2009 (79-71) — with the other two defeats coming to Tennessee in 2005 (62-51) and 2008 (87-63). The Purdue loss also snapped a 33-game non-conference home winning streak which began after the UW setback.

Since its inaugural season in 1977-78, Notre Dame has played all of its games at the Joyce Center, posting a 323-85 (.792) record at the venerable facility. Three times (1999-2000, 2000-01 and 2003-04), the Irish went a perfect 15-0 at home, setting a school record for home wins in a season.

### It's Fan-Demonium At Notre Dame

If the preseason is any indication, Notre Dame women's basketball is easily the hottest ticket in South Bend. For the first time in school history, all Irish women's basketball season ticket packages (close to 7,500) have been sold, including more than 1,000 packages to first-time season ticket purchasers when they went on sale Aug. 14. Furthermore, fans were waiting in line at the Purcell Pavilion ticket office as early as 4:30 that morning, more than four hours before the ticket windows opened.

In fact, while it's likely that some tickets will be made available for individual games during the weeks and days prior to the contests, there's a very real possibility that Notre Dame could sell out every one of its regular-season home games at the newly-refurbished 9,149-seat Purcell Pavilion.

The Irish have posted six sellouts in program history, the most recent coming on Dec. 7, 2008, for a 62-51 win over in-state rival Purdue. That capacity crowd not only was the first on-campus sellout in the 22-game series with the Boilermakers, but it also helped Notre Dame win the NCAA/BIG EAST Conference Pack The House Challenge for 2008-09.

Only one Division I women's basketball program has ever sold out all of its games for an entire season — Connecticut filled the stands for more than 100 consecutive home sellouts during the early part of this decade.

### Irish On Your Radio Dial

Beginning with the 2008-09 athletics year, the Notre Dame athletics department announced it had partnered with the LeSEA Broadcasting Network, making Pulse FM (96.9/92.1) the new radio home of Notre Dame women's basketball

### 2008-09 Notre Dame Top Bench Scorers

Player	Points	Opponent/Date
Brittany Mallory	19	Georgia Southern, 11/25/08
Natalie Novosel	19	Rutgers, 1/27/09
Kellie Watson	18	Michigan State, 11/29/08
Natalie Novosel	18	at Eastern Michigan, 12/2/08
Natalie Novosel	18	at DePaul, 1/6/09
Natalie Novosel	17	Louisville, 2/11/09
Erica Solomon	15	at Boston College, 11/23/08
Natalie Novosel	15	vs. St. John's, 3/7/09
Brittany Mallory	14	at Boston College, 11/23/08
Ashley Barlow	14	at Michigan, 12/10/08
Erica Solomon	14	at Pittsburgh, 2/3/09
Kellie Watson	13	Purdue, 12/7/08
Natalie Novosel	13	Loyola-Chicago, 12/20/08
Erica Solomon	13	at Seton Hall, 1/3/09
Devereaux Peters	12	at LSU, 11/16/08
Erica Solomon	12	Georgia Southern, 11/25/08
Erica Solomon	12	Michigan State, 11/29/08
Erica Solomon	12	at Eastern Michigan, 12/2/08
Natalie Novosel	12	at Charlotte, 12/28/08
Natalie Novosel	12	Georgetown, 1/10/09

in the South Bend market.

LeSEA originates all Notre Dame women's basketball games, with those events carried on Pulse FM (96.9/92.1), marking a return to the FM side of the dial for the first time since the 1998-99 season. Combined, these two stations blanket the nation's No. 89 media market (South Bend-Elkhart), covering a 21-county area in northern Indiana and south-west Michigan that contains more than 1.35 million listeners (better than 800,000 in the greater South Bend area alone). All told, Notre Dame's women's basketball network stretches from Kalamazoo, Mich., to the north, North Judson, Ind., to the west, Macy, Ind., (home of former Irish All-America center **Ruth Riley**) to the south, and LaGrange, Ind., to the east.

Women's basketball game broadcasts also continue to be streamed live and free of charge on Notre Dame's official athletics web site (www.UND.com) through the Fighting Irish All-Access multimedia package.

**Bob Nagle**, the voice of Notre Dame women's basketball from 1996-97 through 1998-99 (including the program's first NCAA Final Four berth in 1997), returns for his second season in his second stint as the radio play-by-play broadcaster for the Irish.

### Notre Dame On The Small Screen

Notre Dame will have at least 15 games televised during the 2009-10 season. Highlighting this year's broadcast schedule are 11 nationally-televised Irish women's basketball contests, including at least six games on the ESPN family of networks and four others on CBS College Sports (check schedule on page 1 of these notes for exact broadcast coverage).

In addition, Notre Dame continues to expand its broadcast reach globally on the Internet. At least four Irish regular-season home games not selected for commercial TV coverage will be webcast live on the official Notre Dame athletics web site, www.UND.com, via the site's free multimedia package, Fighting Irish All-Access. At press time, those games scheduled for webcast on UND.com are: Iona (Nov. 22), Eastern Michigan (Dec. 2), IPFW (Dec. 8) and Valparaiso (Dec. 12).

This year's TV slate continues a recent





trend that has seen the Irish become a regular fixture on television. Beginning with the NCAA championship season of 2000-01 and continuing through this year, Notre Dame has played in 138 televised games, including 87 that were broadcast nationally.

### Oh Captain, My Captain

Fifth-year senior guard **Lindsay Schrader** and senior guards **Ashley Barlow** and **Melissa Lechlitner** all return for their second year as team captains for the 2009-10 season. All three players received the captain's honor following a vote of their teammates prior to the season.

This marks the first time in program history that the same players are serving as captains in consecutive seasons.

### Purcell Pavilion Opens Its Doors

Following an intensive five-month, \$26.3 million interior renovation, the arena for the newly-christened Purcell Pavilion at the Joyce Center will make its regular season women's basketball debut Sunday night when Notre Dame plays host to Arkansas-Pine Bluff.

Sunday's tipoff is part of the culmination of a two-year project to upgrade the home for Notre Dame basketball and volleyball.

The first (exterior) phase of the project, that began in September 2008, involves construction of a new three-story structure at the south end of the arena. That structure will include a new three-story lobby, which will house the Notre Dame ticket operations (approximately 4,500 square feet) and a varsity shop to sell apparel and souvenirs (approximately 3,000 square feet), in addition to a new club seating and hospitality area.

Replacement of the existing arena seating footprint, including installation of single-color chair-back seating throughout the arena, began following the University's Commencement Exercises in May 2009 and was completed in time for the Irish volleyball team to play the first athletic event in the facility on Oct. 30 (a 3-1 win over Seton Hall). The entire project is scheduled for completion in January 2010.

The University announced in October 2007 that this ambitious arena renovation had received a \$12.5 million leadership gift from Notre Dame alumnus and Trustee **Philip J. Purcell III**, the retired chairman and chief executive officer of Morgan Stanley.

Additional cornerstone donations were made by: **Vincent J. Naimoli** ('59), whose \$5 million contribution will lead to the creation of the new Naimoli Family Club Room, and South Bend-area auto dealership owner **Mike Leep Sr.**, whose generous gift will be recognized with the naming of the Mike Leep Sr. Varsity Shop.

### Next Game: Michigan State

Notre Dame hits the road for the first time this season on Thursday with a challenging test at 10th-ranked Michigan State. Tipoff from the Breslin Center in East Lansing, Mich., is set for 6 p.m. (ET), with the game televised to a regional cable audience on the Big Ten Network.

Coming off a trip to the NCAA Sweet 16 last year, MSU (0-1) got an early wake-up call this season with a 77-74 upset loss at Dayton on Friday night. The Spartans will look to break into the win column Sunday afternoon when they pay a visit to Detroit before getting set for their home opener against the Irish.

### Superlatives (BIG EAST Era)

#### Notre Dame Superlatives In The BIG EAST Era (1995-96 to present)

- Longest winning streak:** 23 games (Nov. 17, 2000-Feb. 14, 2001)
- Longest BIG EAST winning streak:** 11 games (Jan. 3-Feb. 14, 2001)
- Longest losing streak:** 3 games, four times (most recently: Feb. 24-March 3, 2007)
- Longest BIG EAST losing streak:** 3 games, twice (most recently: Feb. 24-March 3, 2007)
- Most points scored in a game:** 111 vs. West Virginia, Jan. 7, 1999
- Most points scored in a BIG EAST game:** 111 vs. West Virginia, Jan. 7, 1999
- Fewest points scored in a game:** 38 vs. Villanova, Jan. 24, 2004
- Fewest points scored in a BIG EAST game:** 38 vs. Villanova, Jan. 24, 2004
- Most points allowed in a game:** 106 by Connecticut, Dec. 8, 1998
- Most points allowed in a BIG EAST game:** 106 by Connecticut, Dec. 8, 1998
- Fewest points allowed in a game:** 31 by St. John's, Feb. 13, 2002
- Fewest points allowed in a BIG EAST game:** 31 by St. John's, Feb. 13, 2002
- Largest margin of victory:** 56, twice (most recently: 89-33 vs. Georgetown, March 4, 2001)
- Largest margin of victory in BIG EAST game:** 56 vs. Seton Hall (91-35), Jan. 31, 1998
- Largest margin of victory in home game:** 56 vs. Seton Hall (91-35), Jan. 31, 1998
- Largest margin of victory in road game:** 53 at Central Michigan (94-41), Nov. 29, 2007
- Largest losing margin:** 39 at Tennessee (89-50), March 17, 2002
- Most points allowed in a win:** 93 by Illinois (101-93), Nov. 24, 1998
- Most points scored in a loss:** 84 vs. Texas A&M (88-84, ot), Dec. 3, 1995
- Fewest points scored in a win:** 38 vs. Villanova (38-36), Jan. 24, 2004
- Fewest points allowed in a loss:** 48 vs. Villanova (48-45), Feb. 26, 2002
- Largest deficit overcome to win a game:** 18 at Vanderbilt (59-57), Dec. 30, 2008
- Largest deficit overcome to win a home game:** 15 vs. Pittsburgh (72-65), Feb. 28, 2006
- Largest lead given up in a loss:** 17 vs. Texas Tech (69-65), March 25, 2000
- Most consecutive points scored:** 31 vs. Pittsburgh, Jan. 18, 1997
- Most consecutive points scored (start of game):** 26 vs. Dayton, Dec. 13, 2003
- Highest field goal percentage:** .680 (34-50) vs. Boston College, Feb. 12, 1997
- Lowest field goal percentage:** .220 (13-59) at Seton Hall, March 1, 2005
- Highest three-point percentage:** 1.000 (5-5) vs. Duke, Nov. 17, 2004
- Highest free throw percentage:** 1.000 (18-18) at Valparaiso, Nov. 30, 2004
- Most three-point field goals made:** 13, twice (most recently: at Miami (Fla.), Jan. 2, 2002)
- Most free throws made:** 33, twice (most recently: vs. West Virginia, Feb. 4, 2007)
- Most assists:** 32 vs. Michigan State, Dec. 11, 1999
- Most blocked shots:** 16 vs. Boston College, Feb. 10, 2002
- Most steals:** 23 vs. Providence, Jan. 30, 2008
- Fewest turnovers:** 3 at Maryland, Nov. 16, 2007





**Official Basketball Box Score -- Game Totals -- Final Statistics**  
**Indianapolis vs Notre Dame**  
**11/03/09 7 p.m. at Notre Dame, Ind. (Purcell Pavilion)**

**Indianapolis 53 • (1-1 exhibition)**

##	Player	f	Total		3-Ptr		Rebounds			PF	TP	A	TO	Blk	Stl	Min
			FG-FGA	FG-FGA	FT-FTA	Off	Def	Tot								
33	Fenneman, Sarah	f	0-1	0-0	0-2	1	4	5	1	0	1	0	0	0	20	
34	Meissel, Samantha	f	4-11	0-3	4-5	2	2	4	0	12	1	1	1	2	25	
04	Dewey, Katie	g	3-3	2-2	8-10	0	1	1	3	16	1	11	0	3	26	
12	Canary, Jessica	g	1-2	1-1	0-0	0	4	4	2	3	4	7	0	2	18	
21	Keegan, Cayla	g	0-4	0-1	3-4	0	3	3	4	3	0	4	0	2	26	
13	Lyons, Katie		3-9	0-0	1-4	2	0	2	4	7	0	2	0	0	21	
14	Rourk, Heather		1-2	0-0	0-0	0	1	1	5	2	0	4	0	1	13	
22	Wenning, Hillary		1-1	1-1	0-0	0	2	2	2	3	0	0	0	0	11	
23	Gardner, Megan		1-1	1-1	2-4	0	2	2	1	5	3	6	0	1	19	
24	Gonser, Heather		0-0	0-0	0-0	0	0	0	0	0	1	0	0	0	10	
32	Gonser, Nickole		0-2	0-0	2-2	0	0	0	1	2	0	1	0	0	11	
Team						0	6	6								
Totals			14-36	5-9	20-31	5	25	30	23	53	11	36	1	11	200	

FG % 1st Half: 5-17 29.4% 2nd half: 9-19 47.4% Game: 14-36 38.9% Deadball Rebounds 4  
 3FG % 1st Half: 1-3 33.3% 2nd half: 4-6 66.7% Game: 5-9 55.6%  
 FT % 1st Half: 11-17 64.7% 2nd half: 9-14 64.3% Game: 20-31 64.5%

**Notre Dame 97 • (1-0 exhibition)**

##	Player	f	Total		3-Ptr		Rebounds			PF	TP	A	TO	Blk	Stl	Min
			FG-FGA	FG-FGA	FT-FTA	Off	Def	Tot								
32	BRUSZEWSKI, Becca	f	2-10	1-1	0-0	2	2	4	3	5	2	1	0	1	18	
20	BARLOW, Ashley	g	4-6	1-2	3-4	1	2	3	3	12	2	0	0	2	18	
21	NOVOSEL, Natalie	g	3-9	2-4	5-6	3	3	6	3	13	3	3	0	3	22	
23	LECHLITNER, Melissa	g	2-7	0-2	0-0	1	2	3	1	4	3	1	0	3	20	
24	SCHRADER, Lindsay	g	5-12	0-1	0-1	2	4	6	1	10	0	2	0	1	22	
01	SOLOMON, Erica		4-7	0-0	9-14	2	4	6	3	17	0	0	1	4	16	
04	DIGGINS, Skylar		6-10	1-1	4-4	4	0	4	4	17	1	4	0	3	20	
12	MILLER, Fraderica		0-0	0-0	2-2	3	3	6	2	2	3	1	1	1	19	
15	TURNER, Kaila		0-2	0-0	2-2	0	1	1	3	2	0	0	0	3	17	
22	MALLORY, Brittany		5-8	2-4	0-0	0	1	1	1	12	4	1	0	1	23	
44	CHRISTIANSEN, Alena		1-1	1-1	0-0	0	0	0	0	3	0	0	0	0	5	
Team						2	2	4								
Totals			32-72	8-16	25-33	20	24	44	24	97	18	13	2	22	200	

FG % 1st Half: 15-37 40.5% 2nd half: 17-35 48.6% Game: 32-72 44.4% Deadball Rebounds 3  
 3FG % 1st Half: 4-9 44.4% 2nd half: 4-7 57.1% Game: 8-16 50.0%  
 FT % 1st Half: 8-11 72.7% 2nd half: 17-22 77.3% Game: 25-33 75.8%

Officials: Tim Daley, Mark Berger, Steve Matuszewski  
 Technical fouls: Indianapolis-None. Notre Dame-None.  
 Attendance: 7508

Score by periods	1st	2nd	Total
Indianapolis	22	31	53
Notre Dame	42	55	97

Points	In Paint	Off T/O	2nd Chance	Fast Break	Bench
UINDY	16	8	3	0	19
ND	42	45	30	8	53

Last FG - UINDY 2nd-01:24, ND 2nd-00:15.  
 Largest lead - UINDY None, ND by 45 2nd-02:37.

Score tied - 1 time.  
 Lead changed - 0 times.

# #1 Erica Solomon

Forward • 6-2 • So.-1V • Charleston, W.Va. (Detroit (Mich.) Country Day School)

## Did You Know?

- ◆ Nickname is "Rock" after her middle name (Raquel).
- ◆ Graduated from same high school that produced NBA standouts Chris Webber and Shane Battier, as well as former Irish All-America women's soccer player/current U.S. National Team member Kate (Sobrero) Markgraf, among others.
- ◆ One of seven Irish basketball players who also competed in another sport in high school — was a successful high jumper, setting school record in the event (5 ft., 6 in.).

## 2009-10 Highlights

- ◆ Shared game-high honors with 17 points, six rebounds and four steals in only 16 minutes of action during exhibition win over Indianapolis.

## Solomon Game-by-Game

2009-10	MP	FG	3FG	FT	O-R	A	T	B	S	Pts
Ark.-Pine Bluff at Michigan St.										
Iona vs. San Diego St. vs. South Carolina vs. Oklahoma Eastern Michigan IPFW Valparaiso Charlotte at Central Florida Vanderbilt at Purdue Villanova South Florida at Connecticut at Louisville West Virginia Providence at Syracuse at Rutgers Pittsburgh at Cincinnati DePaul at St. John's at Georgetown Marquette at Seton Hall Connecticut										
* - game started										



## Career Highs

### Points

15 at Boston College (11/23/08)

### Rebounds

10 at Villanova (1/24/09)

### Assists

2, five times (MR: at Villanova, 1/24/09)

### Field Goals

6 at Pittsburgh (2/3/09)

### Field Goal Attempts

11 at Pittsburgh (2/3/09)

### 3-Point Field Goals

None

### 3-Point Field Goal Attempts

None

### Free Throws

6, twice (MR: at EMU, 12/2/08)

### Free Throw Attempts

10 at Eastern Michigan (12/2/08)

### Steals

3 at Valparaiso (12/13/08)

### Blocked Shots

4 at Eastern Michigan (12/2/08)

### Minutes Played

24, twice (MR: at USF, 2/17/09)

## Miscellaneous

Double-doubles	0
Double-figure scoring games	7
20-point games	0
Double-figure rebound games	1
5-block games	0
5-steal games	0

## Solomon's Career Statistics — All Games

Season	GP-GS	Min.-Avg.	FG-FGA	Pct.	3FG-3FGA	Pct.	FT-FTA	Pct.	Off	Def	Reb	Avg.	PF-DQ	A	T	B	S	Pts	Avg.
2008-09	31-0	512-16.5	66-154	.429	0-0	.000	53-86	.616	70	68	138	4.5	75-0	21	44	38	17	185	6.0
<b>TOTALS</b>	<b>31-0</b>	<b>512-16.5</b>	<b>66-154</b>	<b>.429</b>	<b>0-0</b>	<b>.000</b>	<b>53-86</b>	<b>.616</b>	<b>70</b>	<b>68</b>	<b>138</b>	<b>4.5</b>	<b>75-0</b>	<b>21</b>	<b>44</b>	<b>38</b>	<b>17</b>	<b>185</b>	<b>6.0</b>

## Solomon's Career Statistics — BIG EAST Games

Season	GP-GS	Min.-Avg.	FG-FGA	Pct.	3FG-3FGA	Pct.	FT-FTA	Pct.	Off	Def	Reb	Avg.	PF-DQ	A	T	B	S	Pts	Avg.
2008-09	16-0	260-16.3	33-73	.452	0-0	.000	18-35	.514	39	33	72	4.5	50-0	10	26	20	8	84	5.3
<b>TOTALS</b>	<b>16-0</b>	<b>260-16.3</b>	<b>33-73</b>	<b>.452</b>	<b>0-0</b>	<b>.000</b>	<b>18-35</b>	<b>.514</b>	<b>39</b>	<b>33</b>	<b>72</b>	<b>4.5</b>	<b>50-0</b>	<b>10</b>	<b>26</b>	<b>20</b>	<b>8</b>	<b>84</b>	<b>5.3</b>

# #4 Skylar Diggins

Guard • 5-9 • Fr.-HS • South Bend, Ind. (Washington HS)

## Did You Know?

- ◆ One of three McDonald's All-Americans (Peters, Schrader) and three former high school Miss Basketball selections (Schrader, Watson) on 2009-10 Irish roster.
- ◆ One of seven Irish basketball players who also competed in another sport in high school — was two-time all-conference selection in volleyball.
- ◆ Graduated sixth in her high school class (of 300 students) and has designs on a career as an orthopedic surgeon.
- ◆ Also a talented disc jockey, who often worked the tables during her spare time in high school.

## 2009-10 Highlights

- ◆ Tied for game-high scoring honors with 17 points (6-10 FG, 4-4 FT), while adding four rebounds and three steals in exhibition win over Indianapolis.

## Diggins Game-by-Game

2009-10	MP	FG	3FG	FT	O-R	A	T	B	S	Pts
Ark.-Pine Bluff at Michigan St.										
Iona vs. San Diego St. vs. South Carolina vs. Oklahoma										
Eastern Michigan IPFW Valparaiso Charlotte at Central Florida										
Vanderbilt at Purdue Villanova South Florida at Connecticut at Louisville West Virginia Providence at Syracuse at Rutgers Pittsburgh at Cincinnati										
DePaul at St. John's at Georgetown Marquette at Seton Hall Connecticut										
* - game started										



## Career Highs

**Points**  
TBD

**Rebounds**  
TBD

**Assists**  
TBD

**Field Goals**  
TBD

**Field Goal Attempts**  
TBD

**3-Point Field Goals**  
TBD

**3-Point Field Goal Attempts**  
TBD

**Free Throws**  
TBD

**Free Throw Attempts**  
TBD

**Steals**  
TBD

**Blocked Shots**  
TBD

**Minutes Played**  
TBD

## Miscellaneous

Double-doubles .....	0
Double-figure scoring games ...	0
20-point games .....	0
Double-figure rebound games...	0
5-assist games .....	0
5-steal games .....	0

# #10 Kellie Watson

Forward • 6-2 • So.-1V • Ionia, Mich. (Ionia HS)

## Did You Know?

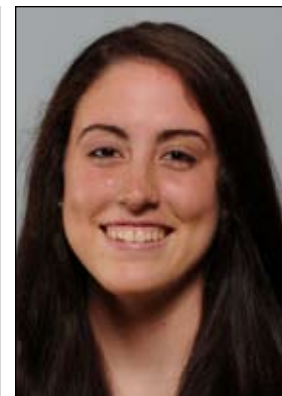
- ◆ Tied for team-high rebounding honors on Notre Dame's 2009 European tour (6.3 rpg.), including a team-high 10 rebounds in win at GEAS Sesto San Giovanni on May 14.
- ◆ One of seven Irish basketball players who also competed in another sport in high school — was two-time all-state softball player who set school single-season records for doubles (86) and triples (27), while leading team to a regional title.
- ◆ Is an accomplished juggler, having been known to perform with items as large as bowling pins on occasion; in fact, she received a juggling kit as a Christmas gift last year.

## 2009-10 Highlights

- ◆ Did not dress for exhibition vs. Indianapolis while recovering from minor knee injury.

## Watson Game-by-Game

2009-10	MP	FG	3FG	FT	O-R	A	T	B	S	Pts
Ark.-Pine Bluff at Michigan St.										
Ionia										
vs. San Diego St.										
vs. South Carolina										
vs. Oklahoma										
Eastern Michigan										
IPFW										
Valparaiso										
Charlotte										
at Central Florida										
Vanderbilt										
at Purdue										
Villanova										
South Florida										
at Connecticut										
at Louisville										
West Virginia										
Providence										
at Syracuse										
at Rutgers										
Pittsburgh										
at Cincinnati										
DePaul										
at St. John's										
at Georgetown										
Marquette										
at Seton Hall										
Connecticut										
* - game started										



## Career Highs

### Points

18 vs. Michigan State (11/29/08)

### Rebounds

6, twice (MR: vs. Purdue, 12/7/08)

### Assists

3, four times (MR: vs. West Virginia, 3/2/09)

### Field Goals

6 vs. Michigan State (11/29/08)

### Field Goal Attempts

12 vs. Loyola-Chicago (12/20/08)

### 3-Point Field Goals

6 vs. Michigan State (11/29/08)  
(tied ND Joyce Center record)

### 3-Point Field Goal Attempts

9 vs. Michigan State (11/29/08)

### Free Throws

4 vs. Loyola-Chicago (12/20/08)

### Free Throw Attempts

6 vs. Loyola-Chicago (12/20/08)

### Steals

2, three times (MR: vs. Minn., 3/22/09)

### Blocked Shots

2 vs. Evansville (11/19/08)

### Minutes Played

27 vs. Loyola-Chicago (12/20/08)

## Miscellaneous

Double-doubles .....	0
Double-figure scoring games .....	3
20-point games .....	0
Double-figure rebound games .....	0
5-assist games .....	0
5-steal games .....	0

## Watson's Career Statistics — All Games

Season	GP-GS	Min.-Avg.	FG-FGA	Pct.	3FG-3FGA	Pct.	FT-FTA	Pct.	Off	Def	Reb	Avg.	PF-DQ	A	T	B	S	Pts	Avg.
2008-09	31-0	460-14.8	37-141	.262	28-94	.298	17-26	.654	17	59	76	2.5	37-1	29	42	10	12	119	3.8
<b>TOTALS</b>	<b>31-0</b>	<b>460-14.8</b>	<b>37-141</b>	<b>.262</b>	<b>28-94</b>	<b>.298</b>	<b>17-26</b>	<b>.654</b>	<b>17</b>	<b>59</b>	<b>76</b>	<b>2.5</b>	<b>37-1</b>	<b>29</b>	<b>42</b>	<b>10</b>	<b>12</b>	<b>119</b>	<b>3.8</b>

## Watson's Career Statistics — BIG EAST Games

Season	GP-GS	Min.-Avg.	FG-FGA	Pct.	3FG-3FGA	Pct.	FT-FTA	Pct.	Off	Def	Reb	Avg.	PF-DQ	A	T	B	S	Pts	Avg.
2008-09	16-0	214-13.4	13-65	.200	10-46	.217	6-8	.750	7	27	34	2.1	19-0	19	18	2	3	42	2.6
<b>TOTALS</b>	<b>16-0</b>	<b>214-13.4</b>	<b>13-65</b>	<b>.200</b>	<b>10-46</b>	<b>.217</b>	<b>6-8</b>	<b>.750</b>	<b>7</b>	<b>27</b>	<b>34</b>	<b>2.1</b>	<b>19-0</b>	<b>19</b>	<b>18</b>	<b>2</b>	<b>3</b>	<b>42</b>	<b>2.6</b>

# #12 Fraderica Miller

Guard • 5-10 • So.-1V • Ellenwood, Ga. (The Marist School)



## Did You Know?

- ◆ First name is pronounced “fruh-DARE-uh-kuh” ... nickname is “Fred”.
- ◆ Shot team-high .636 (7-11) from floor and started twice on Notre Dame’s 2009 European tour, while also finishing third on squad in steals (2.7 spg.).
- ◆ Also strong in the classroom, earning dean’s list honors in spring 2009 with 3.667 semester GPA (she is enrolled in Notre Dame’s Mendoza College of Business but has not yet declared a major).
- ◆ One of seven Irish basketball players who also competed in another sport in high school — ran track & field, competing primarily in sprints (100m/200m/400m).

## 2009-10 Highlights

- ◆ Grabbed game-high-tying six rebounds, while adding two points and three assists in exhibition win over Indianapolis.

## Miller Game-by-Game

2009-10	MP	FG	3FG	FT	O-R	A	T	B	S	Pts
Ark.-Pine Bluff at Michigan St.										
Iona vs. San Diego St.										
vs. South Carolina										
vs. Oklahoma										
Eastern Michigan										
IPFW										
Valparaiso										
Charlotte										
at Central Florida										
Vanderbilt										
at Purdue										
Villanova										
South Florida										
at Connecticut										
at Louisville										
West Virginia										
Providence										
at Syracuse										
at Rutgers										
Pittsburgh										
at Cincinnati										
DePaul										
at St. John’s										
at Georgetown										
Marquette										
at Seton Hall										
Connecticut										
* - game started										

## Career Highs

### Points

7 vs. Loyola-Chicago (12/20/08)

### Rebounds

5 vs. Loyola-Chicago (12/20/08)

### Assists

2, twice (MR: vs. Rutgers, 1/27/09)

### Field Goals

3 vs. Loyola-Chicago (12/20/08)

### Field Goal Attempts

5 vs. Loyola-Chicago (12/20/08)

### 3-Point Field Goals

None

### 3-Point Field Goal Attempts

None

### Free Throws

1 vs. Loyola-Chicago (12/20/08)

### Free Throw Attempts

5 vs. Loyola-Chicago (12/20/08)

### Steals

3 vs. Loyola-Chicago (12/20/08)

### Blocked Shots

None

### Minutes Played

17 vs. Loyola-Chicago (12/20/08)

## Miscellaneous

Double-doubles .....	0
Double-figure scoring games .....	0
20-point games .....	0
Double-figure assist games .....	0
5-assist games .....	0
5-steal games .....	0

## Miller’s Career Statistics — All Games

Season	GP-GS	Min.-Avg.	FG-FGA	Pct.	3FG-3FGA	Pct.	FT-FTA	Pct.	Off	Def	Reb	Avg.	PF-DQ	A	T	B	S	Pts	Avg.
2008-09	23-0	92-4.0	8-11	.727	0-0	.000	1-5	.200	6	7	13	0.6	25-0	8	5	0	15	17	0.7
<b>TOTALS</b>	<b>23-0</b>	<b>92-4.0</b>	<b>8-11</b>	<b>.727</b>	<b>0-0</b>	<b>.000</b>	<b>1-5</b>	<b>.200</b>	<b>6</b>	<b>7</b>	<b>13</b>	<b>0.6</b>	<b>25-0</b>	<b>8</b>	<b>5</b>	<b>0</b>	<b>15</b>	<b>17</b>	<b>0.7</b>

## Miller’s Career Statistics — BIG EAST Games

Season	GP-GS	Min.-Avg.	FG-FGA	Pct.	3FG-3FGA	Pct.	FT-FTA	Pct.	Off	Def	Reb	Avg.	PF-DQ	A	T	B	S	Pts	Avg.
2008-09	13-0	43-3.3	2-3	.667	0-0	.000	0-0	.000	2	4	6	0.5	10-0	5	2	0	7	4	0.3
<b>TOTALS</b>	<b>13-0</b>	<b>43-3.3</b>	<b>2-3</b>	<b>.667</b>	<b>0-0</b>	<b>.000</b>	<b>0-0</b>	<b>.000</b>	<b>2</b>	<b>4</b>	<b>6</b>	<b>0.5</b>	<b>10-0</b>	<b>5</b>	<b>2</b>	<b>0</b>	<b>7</b>	<b>4</b>	<b>0.3</b>

# #14 Devereaux Peters

Forward • 6-2 • Jr.-1V • Chicago, Ill. (Fenwick HS)

## Did You Know?

- ◆ First name is pronounced “DEV-er-OH” ... nickname is “Dev”.
- ◆ Has a 77-inch (6-foot-5) wingspan that, if turned vertically, would be taller than any player on Irish roster (senior center Erica Williamson is 6-foot-4).
- ◆ Peters’ alma mater, Fenwick High School in Oak Park, Ill., holds a special place in Notre Dame athletics history, having produced numerous Irish greats in several sports — the most notable is 1953 Heisman Trophy John Lattner.
- ◆ One of two Irish players who had an uncle play professional football — Peters’ uncle, Tom Seabron, played linebacker at Michigan and was a fifth-round draft pick of the San Francisco 49ers in 1979; Ashley Barlow’s uncle, Ron, was a fullback at Kansas State and was selected by the New York Jets in the 1965 American Football League redshirt draft.

## 2009-10 Highlights

- ◆ Currently rehabilitating from two-part surgery (February/May 2009) to repair torn ACL in left knee suffered on Nov. 23, 2008 at Boston College.

## Peters Game-by-Game

2009-10	MP	FG	3FG	FT	O-R	A	T	B	S	Pts
Ark.-Pine Bluff at Michigan St.										
Iona vs. San Diego St.										
vs. South Carolina										
vs. Oklahoma										
Eastern Michigan										
IPFW										
Valparaiso										
Charlotte										
at Central Florida										
Vanderbilt										
at Purdue										
Villanova										
South Florida										
at Connecticut										
at Louisville										
West Virginia										
Providence										
at Syracuse										
at Rutgers										
Pittsburgh										
at Cincinnati										
DePaul										
at St. John’s										
at Georgetown										
Marquette										
at Seton Hall										
Connecticut										
* - game started										



## Career Highs

### Points

15 vs. Villanova (1/16/08)

### Rebounds

12 vs. Connecticut (1/27/08)

### Assists

4 vs. Saint Francis-Pa. (12/29/07)

### Field Goals

6, three times (MR: at LSU, 11/16/08)

### Field Goal Attempts

15 at Maryland (11/16/07)

### 3-Point Field Goals

None

### 3-Point Field Goal Attempts

None

### Free Throws

8 at Richmond (1/2/08)

### Free Throw Attempts

10 at Richmond (1/2/08)

### Steals

7 vs. Villanova (1/16/08)

### Blocked Shots

5 vs. Miami-Ohio (11/9/07)

### Minutes Played

34 at Maryland (11/16/07)

## Miscellaneous

Double-doubles .....	1
Double-figure scoring games ..	15
20-point games.....	0
Double-figure rebound games...	1
5-block games .....	1
5-steal games.....	1

## Peters’ Career Statistics — All Games

Season	GP-GS	Min.-Avg.	FG-FGA	Pct.	3FG-3FGA	Pct.	FT-FTA	Pct.	Off	Def	Reb	Avg.	PF-DQ	A	T	B	S	Pts	Avg.
2007-08	23-2	468-20.3	82-157	.522	0-0	.000	42-56	.750	57	72	129	5.6	78-5	23	40	45	39	206	9.0
2008-09	3-1	61-20.3	11-16	.688	0-0	.000	0-3	.000	3	10	13	4.3	6-0	5	4	6	5	22	7.3
<b>TOTALS</b>	<b>26-3</b>	<b>529-20.3</b>	<b>93-173</b>	<b>.538</b>	<b>0-0</b>	<b>.000</b>	<b>42-59</b>	<b>.712</b>	<b>60</b>	<b>82</b>	<b>142</b>	<b>5.5</b>	<b>84-5</b>	<b>28</b>	<b>44</b>	<b>51</b>	<b>44</b>	<b>228</b>	<b>8.8</b>

## Peters’ Career Statistics — BIG EAST Games

Season	GP-GS	Min.-Avg.	FG-FGA	Pct.	3FG-3FGA	Pct.	FT-FTA	Pct.	Off	Def	Reb	Avg.	PF-DQ	A	T	B	S	Pts	Avg.
2007-08	9-2	161-17.9	30-58	.517	0-0	.000	22-29	.759	18	34	52	5.8	37-4	8	15	13	16	82	9.1
2008-09	Did not play (injured)																		
<b>TOTALS</b>	<b>9-2</b>	<b>161-17.9</b>	<b>30-58</b>	<b>.517</b>	<b>0-0</b>	<b>.000</b>	<b>22-29</b>	<b>.759</b>	<b>18</b>	<b>34</b>	<b>52</b>	<b>5.8</b>	<b>37-4</b>	<b>8</b>	<b>15</b>	<b>13</b>	<b>16</b>	<b>82</b>	<b>9.1</b>

# #15 Kaila Turner

Guard • 5-8 • Fr.-HS • Joliet, Ill. (Marian Catholic HS)

## Did You Know?

- ◆ From the “if you can’t beat ‘em, join ‘em” files, Turner’s high school team advanced to the Illinois Class AA semifinals during her junior year (2007-08), only to be defeated by eventual champion Fenwick High School, which was led by her new Notre Dame teammate, junior forward Devereaux Peters (Turner’s team came back to win the state third-place game).

## 2009-10 Highlights

- ◆ Saw 17 minutes of action in exhibition win over Indianapolis, tallying two points (2-2 FT), three steals and a rebound.

## Turner Game-by-Game

2009-10	MP	FG	3FG	FT	O-R	A	T	B	S	Pts
Ark.-Pine Bluff at Michigan St.										
Iona										
vs. San Diego St.										
vs. South Carolina										
vs. Oklahoma										
Eastern Michigan										
IPFW										
Valparaiso										
Charlotte										
at Central Florida										
Vanderbilt										
at Purdue										
Villanova										
South Florida										
at Connecticut										
at Louisville										
West Virginia										
Providence										
at Syracuse										
at Rutgers										
Pittsburgh										
at Cincinnati										
DePaul										
at St. John's										
at Georgetown										
Marquette										
at Seton Hall										
Connecticut										
* - game started										



## Career Highs

### Points

TBD

### Rebounds

TBD

### Assists

TBD

### Field Goals

TBD

### Field Goal Attempts

TBD

### 3-Point Field Goals

TBD

### 3-Point Field Goal Attempts

TBD

### Free Throws

TBD

### Free Throw Attempts

TBD

### Steals

TBD

### Blocked Shots

TBD

### Minutes Played

TBD

## Miscellaneous

Double-doubles .....0

Double-figure scoring games ...0

20-point games.....0

Double-figure rebound games...0

5-assist games .....0

5-steal games.....0

# #20 Ashley Barlow

Guard • 5-9 • Sr.-3V • Indianapolis, Ind. (Pike HS)



## Did You Know?

- ◆ One of three team captains this year, along with Melissa Lechlitner and Lindsay Schrader. All three (who were selected through a vote of their teammates) also were captains last season, marking the first time in the program's 33-year history that the same players have held the captain's title in consecutive seasons.
- ◆ Was Notre Dame's leading scorer during its May 2009 European tour at 13.0 ppg., while also shooting .577 (15-26) from the floor and .727 (8-11) from the three-point line; scored tour-best 18 points in win over Roma Athena Basket on May 16.
- ◆ One of four players in school history to record 60+ steals in three consecutive seasons, along with Mary Gavin (1985-88), Coquese Washington (1989-93) and current assistant coach Niele Ivey (1997-2001).

## 2009-10 Highlights

- ◆ Scored 12 points (4-6 FG) with three rebounds, two assists and two steals in exhibition victory over Indianapolis.

## Barlow Game-by-Game

2009-10	MP	FG	3FG	FT	O-R	A	T	B	S	Pts
Ark.-Pine Bluff at Michigan St.										
Iona vs. San Diego St.										
vs. South Carolina vs. Oklahoma										
Eastern Michigan IPFW										
Valparaiso Charlotte										
at Central Florida Vanderbilt										
at Purdue Villanova										
South Florida at Connecticut										
at Louisville West Virginia										
Providence at Syracuse										
at Rutgers Pittsburgh										
at Cincinnati DePaul										
at St. John's at Georgetown										
Marquette at Seton Hall										
Connecticut										
* - game started										

## Career Highs

<b>Points</b>	23 vs. DePaul (1/22/08)
<b>Rebounds</b>	12 vs. SMU (3/23/08)
<b>Assists</b>	6, six times (MR: vs. Syracuse, 2/24/09)
<b>Field Goals</b>	8, three times (MR: vs. DePaul, 1/22/08)
<b>Field Goal Attempts</b>	18, twice (MR: vs. Louisville, 2/11/09)
<b>3-Point Field Goals</b>	4 at Connecticut (2/22/09)
<b>3-Point Field Goal Attempts</b>	10 vs. Michigan State (11/29/08)
<b>Free Throws</b>	13 vs. Prairie View (12/28/06)
<b>Free Throw Attempts</b>	13 vs. Prairie View (12/28/06)
<b>Steals</b>	8 vs. Cincinnati (1/31/09)
<b>Blocked Shots</b>	1, seven times (MR: vs. Rutgers, 1/27/09)
<b>Minutes Played</b>	39 at Villanova (1/24/09)
<b>Miscellaneous</b>	Double-doubles .....4 Double-figure scoring games ..58 20-point games.....7 Double-figure rebound games...5 5-assist games .....6 5-steal games.....8

## Barlow's Career Statistics — All Games

Season	GP-GS	Min.-Avg.	FG-FGA	Pct.	3FG-3FGA	Pct.	FT-FTA	Pct.	Off	Def	Reb	Avg.	PF-DQ	A	T	B	S	Pts	Avg.
2006-07	32-3	810-25.3	110-254	.433	19-58	.328	90-109	.826	79	94	173	5.4	80-3	61	70	3	63	329	10.3
2007-08	34-32	898-26.4	136-290	.469	27-89	.303	111-138	.804	64	95	159	4.7	86-2	64	60	2	68	410	12.1
2008-09	29-28	955-32.9	127-317	.401	40-110	.364	74-95	.779	50	90	140	4.8	51-0	80	75	3	70	368	12.7
<b>TOTALS</b>	<b>95-63</b>	<b>2663-28.0</b>	<b>373-861</b>	<b>.433</b>	<b>86-257</b>	<b>.335</b>	<b>275-342</b>	<b>.804</b>	<b>193</b>	<b>279</b>	<b>472</b>	<b>5.0</b>	<b>217-5</b>	<b>205</b>	<b>205</b>	<b>8</b>	<b>201</b>	<b>1107</b>	<b>11.7</b>

## Barlow's Career Statistics — BIG EAST Games

Season	GP-GS	Min.-Avg.	FG-FGA	Pct.	3FG-3FGA	Pct.	FT-FTA	Pct.	Off	Def	Reb	Avg.	PF-DQ	A	T	B	S	Pts	Avg.
2006-07	16-2	408-25.5	62-137	.453	13-34	.382	35-49	.714	34	44	78	4.9	44-2	29	36	1	26	172	10.8
2007-08	16-14	433-27.1	55-133	.414	10-40	.250	55-69	.797	33	42	75	4.7	44-1	30	35	2	31	175	10.9
2008-09	16-16	533-33.3	67-172	.390	25-64	.391	48-64	.750	30	45	75	4.7	29-0	44	43	1	39	207	12.9
<b>TOTALS</b>	<b>48-32</b>	<b>1374-28.6</b>	<b>184-442</b>	<b>.416</b>	<b>48-138</b>	<b>.348</b>	<b>138-182</b>	<b>.758</b>	<b>97</b>	<b>131</b>	<b>228</b>	<b>4.8</b>	<b>117-3</b>	<b>103</b>	<b>114</b>	<b>4</b>	<b>96</b>	<b>554</b>	<b>11.5</b>



# #21 Natalie Novosel

Guard • 5-11 • So.-1V • Lexington, Ky. (Lexington Catholic HS)



## Did You Know?

- ◆ One of most improved players on Irish roster, with highly-productive off-season including a sharper three-point shot and increased athleticism.
- ◆ Her 45 steals last season were eighth-most by Irish freshman, and marked third consecutive season a Notre Dame rookie had 40+ steals (Barlow 63/ Lechlitner 40 in 2006-07; Mallory 42 in 2007-08).
- ◆ Ranked third on team in scoring (11.3 ppg.) during May 2009 European tour, while also leading team in steals (3.3 spg.) and adding 5.0 rpg.
- ◆ Has a twin brother, Nathan, who is a sophomore on the men's basketball team at Division III University of Rochester (N.Y.); older sister, Shannon, just completed career at University of Evansville in 2009.

## 2009-10 Highlights

- ◆ Earned starting nod for exhibition win over Indianapolis, registering 13 points, game-high-tying six rebounds, three assists and three steals.

## Novosel Game-by-Game

2009-10	MP	FG	3FG	FT	O-R	A	T	B	S	Pts
Ark.-Pine Bluff at Michigan St.										
Iona										
vs. San Diego St.										
vs. South Carolina										
vs. Oklahoma										
Eastern Michigan										
IPFW										
Valparaiso										
Charlotte										
at Central Florida										
Vanderbilt										
at Purdue										
Villanova										
South Florida										
at Connecticut										
at Louisville										
West Virginia										
Providence										
at Syracuse										
at Rutgers										
Pittsburgh										
at Cincinnati										
DePaul										
at St. John's										
at Georgetown										
Marquette										
at Seton Hall										
Connecticut										
* - game started										

## Career Highs

### Points

19 vs. Rutgers (1/27/09)

### Rebounds

8 at Eastern Michigan (12/2/08)

### Assists

4, three times (MR: vs. Louisville, 2/11/09)

### Field Goals

7, twice (MR: vs. Louisville, 2/11/09)

### Field Goal Attempts

11, twice (MR: vs. Louisville, 2/11/09)

### 3-Point Field Goals

1 at Eastern Michigan (12/2/08)

### 3-Point Field Goal Attempts

2, three times (MR: vs. Purdue, 12/7/08)

### Free Throws

6 at DePaul (1/6/09)

### Free Throw Attempts

8, twice (MR: at DePaul, 1/6/09)

### Steals

5 at Providence (2/28/09)

### Blocked Shots

1, three times (MR: at USF, 2/17/09)

### Minutes Played

33 at Eastern Michigan (12/2/08)

## Miscellaneous

Double-doubles	.....0
Double-figure scoring games	....9
20-point games	.....0
Double-figure rebound games	....0
5-assist games	.....0
5-steal games	.....1

## Novosel's Career Statistics — All Games

Season	GP-GS	Min.-Avg.	FG-FGA	Pct.	3FG-3FGA	Pct.	FT-FTA	Pct.	Off	Def	Reb	Avg.	PF-DQ	A	T	B	S	Pts	Avg.
2008-09	31-0	638-20.6	74-150	.493	1-10	.100	65-90	.722	44	45	89	2.9	57-0	47	60	3	45	214	6.9
<b>TOTALS</b>	<b>31-0</b>	<b>638-20.6</b>	<b>74-150</b>	<b>.493</b>	<b>1-10</b>	<b>.100</b>	<b>65-90</b>	<b>.722</b>	<b>44</b>	<b>45</b>	<b>89</b>	<b>2.9</b>	<b>57-0</b>	<b>47</b>	<b>60</b>	<b>3</b>	<b>45</b>	<b>214</b>	<b>6.9</b>

## Novosel's Career Statistics — BIG EAST Games

Season	GP-GS	Min.-Avg.	FG-FGA	Pct.	3FG-3FGA	Pct.	FT-FTA	Pct.	Off	Def	Reb	Avg.	PF-DQ	A	T	B	S	Pts	Avg.
2008-09	16-0	341-12.3	42-85	.494	0-1	.000	34-48	.708	22	22	44	2.8	34-0	28	30	2	29	118	7.4
<b>TOTALS</b>	<b>16-0</b>	<b>341-12.3</b>	<b>42-85</b>	<b>.494</b>	<b>0-1</b>	<b>.000</b>	<b>34-48</b>	<b>.708</b>	<b>22</b>	<b>22</b>	<b>44</b>	<b>2.8</b>	<b>34-0</b>	<b>28</b>	<b>30</b>	<b>2</b>	<b>29</b>	<b>118</b>	<b>7.4</b>

# #22 Brittany Mallory

Guard • 5-10 • Jr.-1V • Baltimore, Md. (McDonogh School)



## Did You Know?

- ◆ Nickname is “Chip”, which she gained during summer school prior to her freshman year — its origin is a bit fuzzy and depends on which of her teammates you’re talking to.
- ◆ Earned certificate of merit for participation in Notre Dame’s Rosenthal Leadership Institute during the 2007-08 academic year.
- ◆ One of seven Irish basketball players who also competed in another sport in high school — was a two-time honorable mention All-America lacrosse midfielder and was named to the 2006 high school All-Tewaaraton Team; in fact, she was actively recruited by several Division I schools to play lacrosse, but chose to focus solely on basketball at Notre Dame.

## 2009-10 Highlights

- ◆ Saw first action since December 2008 injury (torn ACL - left knee), playing team-high 23 minutes off bench in exhibition win over Indianapolis and scoring 12 points (5-8 FG) with game-high four assists.

## Mallory Game-by-Game

2009-10	MP	FG	3FG	FT	O-R	A	T	B	S	Pts
Ark.-Pine Bluff at Michigan St.										
Iona vs. San Diego St. vs. South Carolina vs. Oklahoma Eastern Michigan IPFW Valparaiso Charlotte at Central Florida Vanderbilt at Purdue Villanova South Florida at Connecticut at Louisville West Virginia Providence at Syracuse at Rutgers Pittsburgh at Cincinnati DePaul at St. John's at Georgetown Marquette at Seton Hall Connecticut										
* - game started										

## Career Highs

- Points**  
19 vs. Ga. Southern (11/25/08)
- Rebounds**  
7, twice (MR: vs. USF, 2/27/08)
- Assists**  
6 vs. Evansville (11/19/08)
- Field Goals**  
7 vs. Ga. Southern (11/25/08)
- Field Goal Attempts**  
12 vs. Canisius (11/27/07)
- 3-Point Field Goals**  
4 vs. South Florida (2/27/08)
- 3-Point Field Goal Attempts**  
8 at St. John's (3/3/08)
- Free Throws**  
6 vs. Valparaiso (12/12/07)
- Free Throw Attempts**  
6, twice (MR: vs. Providence, 1/30/08)
- Steals**  
4 vs. Valparaiso (12/12/07)
- Blocked Shots**  
1, three times (MR: at BC, 11/23/08)
- Minutes Played**  
34 at Michigan (12/10/08)
- Miscellaneous**
  - Double-doubles .....0
  - Double-figure scoring games ....9
  - 20-point games.....0
  - Double-figure rebound games...0
  - 5-assist games .....1
  - 5-steal games.....0

## Mallory's Career Statistics — All Games

Season	GP-GS	Min.-Avg.	FG-FGA	Pct.	3FG-3FGA	Pct.	FT-FTA	Pct.	Off	Def	Reb	Avg.	PF-DQ	A	T	B	S	Pts	Avg.
2007-08	33-0	533-16.2	64-187	.342	34-122	.279	46-57	.807	26	46	72	2.2	52-0	29	36	3	42	208	6.3
2008-09	7-3	154-22.0	21-45	.467	7-20	.350	8-13	.615	5	18	23	3.3	15-0	20	9	1	11	57	8.1
<b>TOTALS</b>	<b>40-3</b>	<b>687-17.2</b>	<b>85-232</b>	<b>.366</b>	<b>41-142</b>	<b>.289</b>	<b>54-70</b>	<b>.771</b>	<b>31</b>	<b>64</b>	<b>95</b>	<b>2.4</b>	<b>67-0</b>	<b>49</b>	<b>45</b>	<b>4</b>	<b>53</b>	<b>265</b>	<b>6.6</b>

## Mallory's Career Statistics — BIG EAST Games

Season	GP-GS	Min.-Avg.	FG-FGA	Pct.	3FG-3FGA	Pct.	FT-FTA	Pct.	Off	Def	Reb	Avg.	PF-DQ	A	T	B	S	Pts	Avg.
2007-08	16-0	246-15.4	30-73	.411	21-55	.382	24-30	.800	9	15	24	1.5	24-0	14	20	2	16	105	6.6
2008-09	Did not play (injured)																		
<b>TOTALS</b>	<b>16-0</b>	<b>246-15.4</b>	<b>30-73</b>	<b>.411</b>	<b>21-55</b>	<b>.382</b>	<b>24-30</b>	<b>.800</b>	<b>9</b>	<b>15</b>	<b>24</b>	<b>1.5</b>	<b>24-0</b>	<b>14</b>	<b>20</b>	<b>2</b>	<b>16</b>	<b>105</b>	<b>6.6</b>

# #23 Melissa Lechlitner

Guard • 5-7 • Sr.-3V • Mishawaka, Ind. (South Bend St. Joseph's HS)



## Did You Know?

- ◆ One of three team captains this year, along with Ashley Barlow and Lindsay Schrader. All three (who were selected through a vote of their teammates) also were captains last season, marking the first time in the program's 33-year history that the same players have held the captain's title in consecutive seasons.
- ◆ Exceptional student-athlete and Academic All-America candidate with 3.353 cumulative GPA as psychology major in Notre Dame's College of Arts and Letters; earned dean's list honors in spring 2007 with 3.75 semester GPA.
- ◆ At times this season, could potentially make up one-half of an all-South Bend backcourt with freshman Skylar Diggins.

## 2009-10 Highlights

- ◆ Started and collected four points, three rebounds, three assists and three steals in exhibition win over Indianapolis.

## Lechlitner Game-by-Game

2009-10	MP	FG	3FG	FT	O-R	A	T	B	S	Pts
Ark.-Pine Bluff at Michigan St.										
Iona										
vs. San Diego St.										
vs. South Carolina										
vs. Oklahoma										
Eastern Michigan										
IPFW										
Valparaiso										
Charlotte										
at Central Florida										
Vanderbilt										
at Purdue										
Villanova										
South Florida										
at Connecticut										
at Louisville										
West Virginia										
Providence										
at Syracuse										
at Rutgers										
Pittsburgh										
at Cincinnati										
DePaul										
at St. John's										
at Georgetown										
Marquette										
at Seton Hall										
Connecticut										
* - game started										

## Career Highs

### Points

19 vs. Purdue (12/7/08)

### Rebounds

8 vs. Cincinnati (1/31/09)

### Assists

9 vs. St. John's (1/16/07)

### Field Goals

7, three times (MR: at Valparaiso, 12/13/08)

### Field Goal Attempts

19 at Marquette (1/13/09)

### 3-Point Field Goals

3, twice (MR: vs. Syracuse, 1/20/07)

### 3-Point Field Goal Attempts

7 vs. St. John's (1/16/07)

### Free Throws

8 at Providence (2/17/07)

### Free Throw Attempts

9 at Providence (2/17/07)

### Steals

4, twice (MR: vs. WKU, 11/13/07)

### Blocked Shots

2 vs. Marquette (2/13/08)

### Minutes Played

40, twice (MR: vs. St. John's, 1/17/09)

## Miscellaneous

Double-doubles .....	0
Double-figure scoring games ..	.33
20-point games .....	0
Double-figure rebound games ..	0
5-assist games .....	18
5-steal games .....	1

## Lechlitner's Career Statistics — All Games

Season	GP-GS	Min.-Avg.	FG-FGA	Pct.	3FG-3FGA	Pct.	FT-FTA	Pct.	Off	Def	Reb	Avg.	PF-DQ	A	T	B	S	Pts	Avg.
2006-07	31-0	744-24.0	68-198	.343	12-61	.197	47-62	.758	14	49	63	2.0	41-1	83	61	1	40	195	6.3
2007-08	34-1	753-22.1	71-201	.353	8-37	.216	36-47	.766	14	53	67	2.0	40-0	87	68	3	36	186	5.5
2008-09	31-31	1033-33.3	124-323	.384	22-65	.338	60-73	.822	17	64	81	2.6	55-0	106	77	2	38	330	10.6
<b>TOTALS</b>	<b>96-32</b>	<b>2530-26.4</b>	<b>263-722</b>	<b>.364</b>	<b>42-163</b>	<b>.258</b>	<b>143-182</b>	<b>.786</b>	<b>45</b>	<b>166</b>	<b>211</b>	<b>2.2</b>	<b>136-1</b>	<b>276</b>	<b>206</b>	<b>6</b>	<b>114</b>	<b>711</b>	<b>7.4</b>

## Lechlitner's Career Statistics — BIG EAST Games

Season	GP-GS	Min.-Avg.	FG-FGA	Pct.	3FG-3FGA	Pct.	FT-FTA	Pct.	Off	Def	Reb	Avg.	PF-DQ	A	T	B	S	Pts	Avg.
2006-07	15-0	389-25.9	46-114	.404	5-33	.152	22-30	.733	9	22	31	2.1	15-0	48	31	1	18	119	7.9
2007-08	16-1	361-22.6	37-105	.352	2-13	.154	18-23	.783	9	31	40	2.5	18-0	43	30	3	16	94	5.9
2008-09	16-16	551-34.4	58-168	.345	10-39	.256	38-46	.826	8	43	51	3.2	32-0	66	41	0	21	164	10.3
<b>TOTALS</b>	<b>47-17</b>	<b>1301-27.7</b>	<b>141-387</b>	<b>.364</b>	<b>17-85</b>	<b>.200</b>	<b>78-99</b>	<b>.788</b>	<b>26</b>	<b>96</b>	<b>122</b>	<b>2.6</b>	<b>65-0</b>	<b>157</b>	<b>102</b>	<b>4</b>	<b>55</b>	<b>377</b>	<b>8.0</b>

# #24 Lindsay Schrader

Guard • 6-0 • 5th Yr. Sr.-3V • Bartlett, Ill. (Bartlett HS)



## Did You Know?

- ◆ One of three team captains this year, along with Ashley Barlow and Melissa Lechlitner. All three (who were selected through a vote of their teammates) also were captains last season, marking the first time in the program's 33-year history that the same players have held the captain's title in consecutive seasons.
- ◆ Returns for fifth year of eligibility, granted by Notre Dame's Faculty Board on Athletics, after she missed 2006-07 season with torn ACL in right knee (suffered on fourth day of preseason practice).
- ◆ Will graduate in December with bachelor's degree in management-consulting from Notre Dame's Mendoza College of Business.
- ◆ Future career plans include either becoming a college athletic director or opening a restaurant with her sister, Kristina.

## 2009-10 Highlights

- ◆ Started and tallied 10 points and game-high-tying six rebounds in exhibition victory over Indianapolis.

## Schrader Game-by-Game

2009-10	MP	FG	3FG	FT	O-R	A	T	B	S	Pts
Ark.-Pine Bluff at Michigan St.										
Iona vs. San Diego St.										
vs. South Carolina vs. Oklahoma										
Eastern Michigan IPFW										
Valparaiso Charlotte										
at Central Florida Vanderbilt										
at Purdue Villanova										
South Florida at Connecticut										
at Louisville West Virginia										
Providence at Syracuse										
at Rutgers Pittsburgh										
at Cincinnati DePaul										
at St. John's at Georgetown										
Marquette at Seton Hall										
Connecticut										
* - game started										

## Career Highs

### Points

29 vs. Boston College (3/19/06)

### Rebounds

15 vs. Cincinnati (1/31/09)

### Assists

6 vs. Connecticut (1/27/08)

### Field Goals

12 vs. Boston College (3/19/06)

### Field Goal Attempts

23 vs. Boston College (3/19/06)

### 3-Point Field Goals

1, six times (MR: at Charlotte, 12/28/08)

### 3-Point Field Goal Attempts

2 at Rutgers (1/24/06)

### Free Throws

6, three times (MR: vs. DePaul, 2/8/09)

### Free Throw Attempts

10 at Syracuse (1/31/06)

### Steals

4 vs. Marquette (2/13/08)

### Blocked Shots

3 vs. Connecticut (3/5/06)

### Minutes Played

40, twice (MR: at Bowling Green, 12/5/07)

## Miscellaneous

Double-doubles ..... 11  
 Double-figure scoring games ..56  
 20-point games.....6  
 Double-figure rebound games...15  
 5-assist games .....7  
 5-steal games.....0

## Schrader's Career Statistics — All Games

Season	GP-GS	Min.-Avg.	FG-FGA	Pct.	3FG-3FGA	Pct.	FT-FTA	Pct.	Off	Def	Reb	Avg.	PF-DQ	A	T	B	S	Pts	Avg.
2005-06	30-27	858-28.6	127-287	.443	4-7	.571	58-111	.523	36	126	162	5.4	55-1	52	57	11	33	316	10.5
2006-07	Did not play (injured)																		
2007-08	34-33	955-28.1	148-322	.460	1-2	.500	52-80	.650	71	139	210	6.2	44-1	73	63	4	54	349	10.3
2008-09	31-31	958-30.9	165-356	.463	1-3	.333	61-91	.670	63	165	228	7.4	45-1	67	72	14	43	392	12.6
<b>TOTALS</b>	<b>95-91</b>	<b>2771-29.2</b>	<b>440-965</b>	<b>.456</b>	<b>6-12</b>	<b>.500</b>	<b>171-282</b>	<b>.606</b>	<b>170</b>	<b>430</b>	<b>600</b>	<b>6.3</b>	<b>144-3</b>	<b>192</b>	<b>192</b>	<b>29</b>	<b>130</b>	<b>1057</b>	<b>11.1</b>

## Schrader's Career Statistics — BIG EAST Games

Season	GP-GS	Min.-Avg.	FG-FGA	Pct.	3FG-3FGA	Pct.	FT-FTA	Pct.	Off	Def	Reb	Avg.	PF-DQ	A	T	B	S	Pts	Avg.
2005-06	16-13	442-27.6	63-151	.417	2-5	.400	34-60	.567	19	64	83	5.2	25-0	28	27	5	16	162	10.1
2006-07	Did not play (injured)																		
2007-08	16-15	458-28.6	70-141	.496	0-0	.000	29-39	.744	29	71	100	6.3	22-1	36	31	3	23	169	10.6
2008-09	16-16	508-31.8	85-193	.440	0-2	.000	34-52	.654	35	93	128	8.0	23-1	31	40	8	20	204	12.8
<b>TOTALS</b>	<b>48-44</b>	<b>1408-29.3</b>	<b>218-485</b>	<b>.449</b>	<b>2-7</b>	<b>.286</b>	<b>97-151</b>	<b>.642</b>	<b>83</b>	<b>228</b>	<b>311</b>	<b>6.5</b>	<b>70-2</b>	<b>95</b>	<b>98</b>	<b>16</b>	<b>59</b>	<b>535</b>	<b>11.1</b>

# #32 Becca Bruszewski

Forward • 6-1 • Jr.-2V • Valparaiso, Ind. (Wheeler HS)



## Did You Know?

- Last name is pronounced “broo-SHEFF-skee” ... nickname is “Bruiser”, due to her fearless, physical style of play and her penchant for leaving teammates and opponents black and blue after a practice or game.
- One of seven Irish basketball players who also competed in another sport in high school — was a three-time all-state volleyball middle blocker, who still holds school records for career kills (2,042) and blocks (452), as well as single-season kills (657) and blocks (139).
- First Notre Dame women’s basketball player from northwest Indiana, hailing from same area of state as Irish men’s basketball All-America power forward Luke Harangody.

## 2009-10 Highlights

- Started and finished with five points, four rebounds and two assists in exhibition triumph over Indianapolis.

## Bruszewski Game-by-Game

2009-10	MP	FG	3FG	FT	O-R	A	T	B	S	Pts
Ark.-Pine Bluff at Michigan St.										
Iona										
vs. San Diego St.										
vs. South Carolina										
vs. Oklahoma										
Eastern Michigan										
IPFW										
Valparaiso										
Charlotte										
at Central Florida										
Vanderbilt										
at Purdue										
Villanova										
South Florida										
at Connecticut										
at Louisville										
West Virginia										
Providence										
at Syracuse										
at Rutgers										
Pittsburgh										
at Cincinnati										
DePaul										
at St. John's										
at Georgetown										
Marquette										
at Seton Hall										
Connecticut										
* - game started										

## Career Highs

- Points**  
19 vs. Purdue (12/7/08)
- Rebounds**  
8 vs. Cincinnati (1/31/09)
- Assists**  
9 vs. St. John's (1/16/07)
- Field Goals**  
7, three times (MR: at Valparaiso, 12/13/08)
- Field Goal Attempts**  
19 at Marquette (1/13/09)
- 3-Point Field Goals**  
3, twice (MR: vs. Syracuse, 1/20/07)
- 3-Point Field Goal Attempts**  
7 vs. St. John's (1/16/07)
- Free Throws**  
8 at Providence (2/17/07)
- Free Throw Attempts**  
9 at Providence (2/17/07)
- Steals**  
4, twice (MR: vs. WKU, 11/13/07)
- Blocked Shots**  
2 vs. Marquette (2/13/08)
- Minutes Played**  
40, twice (MR: vs. St. John's, 1/17/09)
- Miscellaneous**  
Double-doubles .....0  
Double-figure scoring games ..33  
20-point games.....0  
Double-figure rebound games...0  
5-assist games .....18  
5-steal games.....1

## Bruszewski's Career Statistics — All Games

Season	GP-GS	Min.-Avg.	FG-FGA	Pct.	3FG-3FGA	Pct.	FT-FTA	Pct.	Off	Def	Reb	Avg.	PF-DQ	A	T	B	S	Pts	Avg.
2007-08	32-0	423-13.2	58-104	.558	1-2	.500	42-54	.778	37	43	80	2.5	58-0	13	31	10	16	159	5.0
2008-09	31-31	842-27.2	132-271	.487	21-56	.375	48-71	.676	31	125	156	5.0	88-2	52	53	15	33	333	10.7
<b>TOTALS</b>	<b>63-31</b>	<b>1265-20.1</b>	<b>190-375</b>	<b>.507</b>	<b>22-58</b>	<b>.379</b>	<b>90-125</b>	<b>.720</b>	<b>68</b>	<b>168</b>	<b>236</b>	<b>3.7</b>	<b>146-2</b>	<b>65</b>	<b>84</b>	<b>25</b>	<b>49</b>	<b>492</b>	<b>7.8</b>

## Bruszewski's Career Statistics — BIG EAST Games

Season	GP-GS	Min.-Avg.	FG-FGA	Pct.	3FG-3FGA	Pct.	FT-FTA	Pct.	Off	Def	Reb	Avg.	PF-DQ	A	T	B	S	Pts	Avg.
2007-08	14-0	171-12.2	21-35	.600	1-2	.500	21-24	.875	14	18	32	2.3	26-0	5	12	5	4	64	4.6
2008-09	16-16	458-28.6	73-158	.462	12-34	.353	30-40	.750	17	70	87	5.4	46-0	24	20	9	15	188	11.8
<b>TOTALS</b>	<b>30-16</b>	<b>629-21.0</b>	<b>94-193</b>	<b>.487</b>	<b>13-36</b>	<b>.361</b>	<b>51-64</b>	<b>.797</b>	<b>31</b>	<b>88</b>	<b>119</b>	<b>4.0</b>	<b>72-0</b>	<b>29</b>	<b>32</b>	<b>14</b>	<b>19</b>	<b>252</b>	<b>8.4</b>

# #44 Alena Christiansen

Guard • 5-7 • Sr.-SQ • Fort Lauderdale, Fla. (Cardinal Gibbons HS)



## Did You Know?

- ◆ Walk-on who was added to roster midway through last season and has become a favorite of teammates and fans alike from the minute she first suited up for the Irish.
- ◆ Outstanding student-athlete with a 3.487 cumulative GPA as a marketing major in Notre Dame's Mendoza College of Business; also named to dean's list in spring 2009 with 3.75 semester GPA.

## 2009-10 Highlights

- ◆ Played five minutes in exhibition win over Indianapolis, knocking down a late three-pointer.

## Christiansen Game-by-Game

2009-10	MP	FG	3FG	FT	O-R	A	T	B	S	Pts
Ark.-Pine Bluff at Michigan St.										
Iona vs. San Diego St. vs. South Carolina vs. Oklahoma Eastern Michigan IPFW										
Valparaiso Charlotte at Central Florida Vanderbilt at Purdue Villanova South Florida at Connecticut at Louisville West Virginia Providence at Syracuse at Rutgers Pittsburgh at Cincinnati DePaul at St. John's at Georgetown Marquette at Seton Hall Connecticut										
* - game started										

## Career Highs

### Points

2 vs. Georgetown (1/10/09)

### Rebounds

1 vs. Loyola-Chicago (12/20/08)

### Assists

None

### Field Goals

None

### Field Goal Attempts

1, twice (MR: vs. St. John's, 3/6/09)

### 3-Point Field Goals

None

### 3-Point Field Goal Attempts

1 vs. Loyola-Chicago (12/20/08)

### Free Throws

2 vs. Georgetown (1/10/09)

### Free Throw Attempts

4 vs. Loyola-Chicago (12/20/08)

### Steals

1, twice (MR: vs. St. John's, 3/6/09)

### Blocked Shots

None

### Minutes Played

5 vs. Loyola-Chicago (12/20/08)

## Miscellaneous

Double-doubles	.....0
Double-figure scoring games	....0
20-point games	.....0
Double-figure rebound games	.....0
5-assist games	.....0
5-steal games	.....0

## Christiansen's Career Statistics — All Games

Season	GP-GS	Min.-Avg.	FG-FGA	Pct.	3FG-3FGA	Pct.	FT-FTA	Pct.	Off	Def	Reb	Avg.	PF-DQ	A	T	B	S	Pts	Avg.
2008-09	6-0	9-1.5	0-2	.000	0-1	.000	3-6	.500	1	0	1	0.2	1-0	0	0	0	2	3	0.5
<b>TOTALS</b>	<b>6-0</b>	<b>9-1.5</b>	<b>0-2</b>	<b>.000</b>	<b>0-1</b>	<b>.000</b>	<b>3-6</b>	<b>.500</b>	<b>1</b>	<b>0</b>	<b>1</b>	<b>0.2</b>	<b>1-0</b>	<b>0</b>	<b>0</b>	<b>0</b>	<b>2</b>	<b>3</b>	<b>0.5</b>

## Christiansen's Career Statistics — BIG EAST Games

Season	GP-GS	Min.-Avg.	FG-FGA	Pct.	3FG-3FGA	Pct.	FT-FTA	Pct.	Off	Def	Reb	Avg.	PF-DQ	A	T	B	S	Pts	Avg.
2008-09	4-0	3-0.8	0-0	.000	0-0	.000	2-2	1.000	0	0	0	0.0	0-0	0	0	0	0	2	0.5
<b>TOTALS</b>	<b>4-0</b>	<b>3-0.8</b>	<b>0-0</b>	<b>.000</b>	<b>0-0</b>	<b>.000</b>	<b>2-2</b>	<b>1.000</b>	<b>0</b>	<b>0</b>	<b>0</b>	<b>0.0</b>	<b>0-0</b>	<b>0</b>	<b>0</b>	<b>0</b>	<b>0</b>	<b>2</b>	<b>0.5</b>

# #52 Erica Williamson

Center • 6-4 • Jr.-2V • Charlotte, N.C. (South Mecklenburg HS)

## Did You Know?

- ◆ Nickname is "E".
- ◆ President of Notre Dame's Student-Athlete Advisory Council (SAAC) for 2009-10 after serving as team's SAAC representative last year.
- ◆ Aiming for a career in sports broadcasting, and got started in that direction this past summer as intern in sports department at WSBT-TV (CBS affiliate) in South Bend.
- ◆ On target to graduate in December (one semester early) with her bachelor's degree in film, television & theater from Notre Dame's College of Arts and Letters (she posted a 3.533 semester GPA in the spring of 2009).

## 2009-10 Highlights

- ◆ Did not suit up for exhibition game vs. Indianapolis while recovering from ankle injury.

## Williamson Game-by-Game

2009-10	MP	FG	3FG	FT	O-R	A	T	B	S	Pts
Ark.-Pine Bluff at Michigan St.										
Iona										
vs. San Diego St.										
vs. South Carolina										
vs. Oklahoma										
Eastern Michigan										
IPFW										
Valparaiso										
Charlotte										
at Central Florida										
Vanderbilt										
at Purdue										
Villanova										
South Florida										
at Connecticut										
at Louisville										
West Virginia										
Providence										
at Syracuse										
at Rutgers										
Pittsburgh										
at Cincinnati										
DePaul										
at St. John's										
at Georgetown										
Marquette										
at Seton Hall										
Connecticut										
* - game started										



## Career Highs

### Points

21 vs. Georgetown (1/10/09)

### Rebounds

18 at South Florida (1/13/07)

### Assists

3 vs. South Florida (2/27/08)

### Field Goals

9 at DePaul (1/6/09)

### Field Goal Attempts

12 at Rutgers (2/19/08)

### 3-Point Field Goals

None

### 3-Point Field Goal Attempts

None

### Free Throws

8 at Syracuse (2/16/08)

### Free Throw Attempts

12 at Syracuse (2/16/08)

### Steals

3 at Syracuse (2/16/08)

### Blocked Shots

5, twice (MR: vs. Syracuse, 2/24/09)

### Minutes Played

36 vs. Oklahoma (3/25/08)

## Miscellaneous

Double-doubles .....	4
Double-figure scoring games ..	18
20-point games .....	2
Double-figure rebound games....	6
5-block games .....	2

## Williamson's Career Statistics — All Games

Season	GP-GS	Min.-Avg.	FG-FGA	Pct.	3FG-3FGA	Pct.	FT-FTA	Pct.	Off	Def	Reb	Avg.	PF-DQ	A	T	B	S	Pts	Avg.
2006-07	31-0	516-16.6	64-137	.467	0-0	.000	61-95	.642	59	104	163	5.3	79-1	12	40	39	18	189	6.1
2007-08	34-21	569-16.7	74-158	.468	0-0	.000	71-104	.683	75	75	150	4.4	65-0	20	34	38	13	219	6.4
2008-09	31-30	511-16.5	63-137	.460	0-0	.000	50-66	.758	47	87	134	4.3	56-0	21	33	29	14	176	5.7
<b>TOTALS</b>	<b>96-51</b>	<b>1596-16.6</b>	<b>201-432</b>	<b>.465</b>	<b>0-0</b>	<b>.000</b>	<b>182-265</b>	<b>.687</b>	<b>181</b>	<b>266</b>	<b>447</b>	<b>4.7</b>	<b>200-1</b>	<b>53</b>	<b>107</b>	<b>106</b>	<b>45</b>	<b>584</b>	<b>6.1</b>

## Williamson's Career Statistics — BIG EAST Games

Season	GP-GS	Min.-Avg.	FG-FGA	Pct.	3FG-3FGA	Pct.	FT-FTA	Pct.	Off	Def	Reb	Avg.	PF-DQ	A	T	B	S	Pts	Avg.
2006-07	16-0	277-17.3	30-71	.423	0-0	.000	33-48	.688	30	59	89	5.6	40-1	8	18	18	10	93	5.8
2007-08	16-13	312-19.5	37-82	.451	0-0	.000	49-70	.700	43	41	84	5.3	30-0	13	18	21	10	123	7.7
2008-09	16-16	289-18.1	45-77	.584	0-0	.000	27-37	.730	24	44	68	4.3	30-0	15	18	17	9	117	7.3
<b>TOTALS</b>	<b>48-29</b>	<b>878-18.3</b>	<b>112-230</b>	<b>.487</b>	<b>0-0</b>	<b>.000</b>	<b>109-155</b>	<b>.703</b>	<b>97</b>	<b>144</b>	<b>241</b>	<b>5.0</b>	<b>100-1</b>	<b>36</b>	<b>54</b>	<b>56</b>	<b>29</b>	<b>333</b>	<b>6.9</b>