



NOTRE DAME

WOMEN'S BASKETBALL

Fighting Irish Media
▶ Leigh Torbin
▶ ltorbin@nd.edu
▶ 407-325-5703 (c)
▶ UND.com/WBB

2016-17 SCHEDULE

NOVEMBER

3	Roberts Wesleyan (Exhib.)	W, 129-50
11	Central Michigan \$ [ACC Net. Extra]	W, 107-47
14	Fordham \$ [ACC Net. Extra]	W, 67-36
17	Green Bay \$ [ACC Net. Extra]	W, 71-67
20	#17 Washington \$ [CBS Sports]	W, 71-60
22	vs. UL-Lafayette ^	W, 91-51
26	TCU [ACC Net. Extra]	W, 92-59
30	at Iowa [BTN]	W, 73-58

DECEMBER

4	Valparaiso [ACC Net. Extra]	W, 114-54
7	#1 UConn [ESPN2]	L, 61-72
10	at #16 DePaul [CSN+]	W, 75-61
18	at Toledo [ESPN3]	W, 85-68
20	at Michigan State [BTN]	W, 79-61
27	at Chattanooga	W, 79-58
29	at NC State * [ACC Net. Extra]	L, 62-70

JANUARY

2	at Georgia Tech * [ACC Net. Extra]	W, 55-38
5	Wake Forest * [ACC Net. Extra]	7 p.m.
8	at #14 Miami * [ESPN2]	3 p.m.
12	Pittsburgh * [ACC Net. Extra]	7 p.m.
16	at Tennessee [ESPN2]	7 p.m.
19	at Boston College *	7 p.m.
22	at North Carolina * [ESPN2]	12 p.m.
26	Duke * [ACC Network]	7 p.m.
29	Virginia * [ESPN2]	12 p.m.

FEBRUARY

2	at Virginia Tech *	7 p.m.
6	Louisville * [ESPN2]	7 p.m.
12	Georgia Tech * [ACC Network]	1 p.m.
16	at Clemson *	7 p.m.
19	at Syracuse * [ESPN2]	5 p.m.
23	Boston College * [ACC Net. Extra]	7 p.m.
26	Florida State * [ESPN2]	1 p.m.

MARCH

1	ACC First Round %	TBA
2	ACC Second Round %	TBA
3	ACC Quarterfinals %	TBA
4	ACC Semifinals %	TBA
5	ACC Final %	TBA
17/18	NCAA First Round &	TBA
19/20	NCAA Second Round &	TBA
24/25	NCAA Sweet 16 @	TBA
26/27	NCAA Elite Eight @	TBA
31	NCAA Semifinal #	TBA

APRIL

2	NCAA Championship Game #	TBA
---	--------------------------	-----

Home Games in bold

All times are subject to change and listed in ET

[denotes television coverage]

* - denotes an Atlantic Coast Conference game

\$ - Preseason WNIT (at Notre Dame, Ind.)

^ - Campbell Center (Houston, Texas)

% - HTC Center (Conway, S.C.)

& - TBA Campus sites

@ - 2017 NCAA Regional Sites

Webster Bank Arena [Bridgeport, Conn.]

Rupp Arena [Lexington, Ky.]

Chesapeake Energy Arena [Oklahoma City, Okla.]

Stockton Arena [Stockton, Calif.]

- 2017 NCAA Final Four

American Airlines Center [Dallas, Texas]

GAME 16 · WAKE FOREST



#7/6 University of Notre Dame Fighting Irish

(13-2, 1-1 ACC)



Wake Forest University Demon Deacons

(9-4, 0-0 ACC)

GAME 16

Matchup: Wake Forest at Notre Dame

Date: Thursday, Jan. 5

Time: 7:02 p.m. ET

Site: Notre Dame, Ind.

Arena: Purcell Pavilion at the Joyce Center (9,149)

Television: None

Live Video: ACC Network Extra (WatchESPN)

Talent: Mike Monaco, A.J. Burgett

Live Radio: Pulse FM 96.9/92.1

Talent: Bob Nagle

Live Audio: WatchND App or WatchND.tv

Live Stats: UND.com

Live Updates: @NDWBB

Series History: Notre Dame leads 4-0

What's Inside

Notes	1-7
University Information & Quick Facts	2
Series History vs. Wake Forest	2
Around the ACC	3
National Polls & Notre Dame in the Polls	4
2016-17 Honors & Awards	4
Notre Dame's Record When	5
Specialty Stats	6
Notre Dame Roster	8
Radio/TV Roster	9
Miscellaneous Statistics	10
The Last Time	11-12
Game Recaps	13-16
Player Bio Updates	17-27
2016-17 Season Stats	28-40

Notre Dame Likely Starters and Reserves

No	Name	Pos	Ht	Yr*	PPG	RPG	Other	Notes
3	Marina Mabrey	G	5-11	So.	12.5	3.3	44 assts	• Scored at least 19 in 3 of last 5 games
11	Brianna Turner	F	6-3	Jr.	14.9	7.1	32 blks	• Third Irish player with 200 career blocks
15	Lindsay Allen	G	5-8	Sr.	9.6	5.6	109 assts	• Fifth in ACC history with 668 assists.
24	Arike Ogunbowale	G	5-8	So.	14.7	3.8	24 stls	• Has led ND in scoring 8 times this year
33	Kathryn Westbeld	F	6-2	Jr.	8.6	6.5	27 assts	• Career-highs 8.6 ppg & 6.5 rpg in '16-17

Off the Bench For the Fighting Irish

5	Jackie Young	G	6-0	Fr.	6.5	3.4	12 assts	• Has battled wrist & ankle injuries in '16
14	Mychal Johnson	G	5-7	Jr.	2.9	1.7	22 assts	• 22 assts are 3 shy of career season high
20	Ali Patberg	G	5-10	So.	0.0	1.0	3 assts	• Has battled illness to appear in 6 games
21	Kristina Nelson	F	6-4	Sr.	4.1	3.6	15 assts	• Logging most min. of career this year
22	Erin Boley	G	6-2	Fr.	6.3	2.5	8 assts	• Avg. 7.6 ppg in Dec. after a 5.4 in Nov.
35	Diamond Thompson	C	6-5	Sr.	1.0	0.5	1 asst	• Seen action in six games this season

* = players listed by academic class (Kristina Nelson did not play in 2014-15 and Ali Patberg did not play in 2015-16 so both have an additional season of athletic eligibility)

8

The eight ACC teams in this week's coaches' poll mark a league record and matches the record for any league. Notre Dame is the highest-ranked of the ACC octet at number six.

2

Notre Dame is in the midst of a stretch where the team will play just two out of 12 games at home. Wake Forest marks the first home game for the Irish since the Dec. 7 tilt with No. 1 UConn.

8196

The Irish will be welcomed back to Purcell Pavilion by a typically thick throng of Notre Dame fans. The Irish stand fifth nationally in average home attendance at 8,196 per game.



NDWBB



NDWBB



NDWBB



NDWBB

UNIVERSITY INFORMATION

School: University of Notre Dame
 Location: Notre Dame, IN 46556
 Founded: 1842
 Enrollment: 8,475 (undergraduate), 12,126 (total)
 Nickname: Fighting Irish
 Colors: Gold and Blue
 Affiliation: NCAA Division I
 Conference: Atlantic Coast Conference (ACC)
 President: Rev. John I. Jenkins, C.S.C. (Notre Dame '76)
 Provost: Thomas Burish
 NCAA Faculty Representative: Patricia Bellia (Harvard '91)
 Athletics Director: Jack Swarbrick (Notre Dame '76)
 Sr. Assoc. Athletic Director/Sport Admin.: Jill Bodensteiner (Notre Dame '91)
 Ticket Office Phone: (574) 631-7356
 Home Arena (capacity): Purcell Pavilion at the Joyce Center (9,149)

WOMEN'S BASKETBALL INFORMATION

Karen and Kevin Keyes Family Head Women's Basketball Coach:
 Muffet McGraw (St. Joseph's (Pa.) '77)
 Record at Notre Dame: 745-225 (.768) (30th season)
 Record Overall 833-266 (.758) (35th season)
 ACC Record/Years: 48-2 (.960) (fourth season)
 Associate Head Coach: Carol Owens (Northern Illinois '90)
 Associate Head Coach / Recruiting Coordinator: Niele Ivey (Notre Dame '00)
 Associate Coach: Beth Cunningham (Notre Dame '97)
 Director of Basketball Operations: Katie Capps (Western Kentucky '02)
 Video Coordinator: Erica Williamson (Notre Dame '10)
 Special Events Coordinator: Sharla Lewis (Chicago State '99)
 Athletic Trainer: Anne Marquez (West Florida '01)
 Strength and Conditioning: Elisa Angeles (Ball State '03)
 Academic Counselor: Amanda Hall (DePauw '01)
 Equipment Manager: Kathy Speybroeck (Indiana '82)
 Women's Basketball Office Phone: (574) 631-5420

MEDIA RELATIONS INFORMATION

Associate Director, Athletics Communications (WBB SID): Leigh Torbin
 Office Phone: (574) 631-9471
 Cell Phone: (407) 325-5703
 E-Mail: ltorbin@nd.edu
 Assistant Director, Athletics Communications (WBB Asst.): Megan Golden
 Office Phone: (574) 631-2664
 Cell Phone: (440) 223-7142
 E-Mail: mgolden@nd.edu
 Purcell Pavilion Press Row Phone: (574) 631-5309
 Mailing Address: University of Notre Dame
 113 Joyce Center
 Notre Dame, IN 46556
 Web Site: www.und.com/NDWBB
 Twitter: @NDWBB
 Instagram: NDWBB
 Facebook: facebook.com/NDWBB
 Snapchat NDWBB

TEAM INFORMATION

2015-16 Overall Record: 33-2
 2015-16 ACC Record/Finish: 16-0 (1st)
 2015-16 Postseason: ACC Tournament Champion
 NCAA Sweet 16
 Letter Winners Returning: 9
 Letter Winners Lost: 3
 Newcomers: 2
 2016-17 Captains: TBA
 NCAA Appearances 23 (Last: 2016)
 NCAA Final Four Appearances Seven (Last: 2015)
 NCAA National Championships One (2001)

NOTRE DAME-WAKE FOREST HISTORY

- The Irish have won all four meetings with the Demon Deacons, three of them coming since Notre Dame joined the ACC for the 2013-14 season.
- The series has been lopsided with the Irish winning the four games by an average of 27.75 points per game.
- In the only pre-ACC era meeting, Notre Dame beat Wake Forest, 92-69, on Nov. 27, 2010, in Winston-Salem during the WBCA Classic - a three-game event which also saw the Irish defeat IUPUI and Butler.
- Last year, Notre Dame claimed an 86-52 victory in Winston-Salem on Feb. 18. **Brianna Turner** led the way with a double-double on 19 points and 11 rebounds. **Arike Ogunbowale** came off the bench and finished second on the Irish with 16 points. The Irish shot 56.5% for a game in which they never trailed.

HOME SWEET HOME

- Notre Dame just completed a six-game road trip which took Notre Dame to DePaul (Dec. 10), Toledo (Dec. 18), Michigan State (Dec. 20), Chattanooga (Dec. 27), NC State (Dec. 29) and Georgia Tech (Jan. 2) before the Irish returned home to Purcell Pavilion for this game against Wake Forest.
- It was the longest true road game string in school history. The previous record was five consecutive road games from Dec. 30, 1983, to Jan. 15, 1984, as the Irish traversed the U.S. going to Boston College, East Carolina, Xavier, Louisiana Tech and SMU.
- Notre Dame has played four straight road games several times in the **Muffet McGraw** era, most recently a run from Dec. 28, 2008, to Jan. 6, 2009, with the Irish sweeping four straight contests at Charlotte, Vanderbilt, Seton Hall and DePaul.
- Oddly, Notre Dame had to wait significantly to pass its first true road test. The Irish were one of the final 27 teams nationally to play a true road game in 2016-17, not breaking out their blue uniforms until a Nov. 30 contest at Iowa in the ACC/Big Ten Challenge.
- Unfortunately, the Irish will not be home long as they head back on the road Friday afternoon for Sunday's matinee at Miami. Overall, Notre Dame is currently immersed in a stretch of playing seven out of eight games on the road and 10 out of 12 running through the team's Jan. 22 game at North Carolina.

FAST STARTS KEY

- Notre Dame has been at its best this year when getting off to a fast start to games. Out of the four quarters of a game, Notre Dame has scored the most points (314), allowed the fewest points (194) and has the widest scoring margin (+120) in the first quarter of any single stanza.
- In 15 games this year, Notre Dame has only trailed twice after 10 minutes of play. Not completely by coincidence, those two games (UConn and NC State) are the team's only two losses.
- The Irish have held a lead after the first quarter in 12 of their 15 games while standing tied with TCU, 22-22, after the first quarter of an eventual Notre Dame win on Nov. 26.
- This trend extends back to last season when the NCAA switched from halves to quarters. The 2015-16 Irish scored 719 first quarter points - the most of any 10-minute segment. Last year's team saw its lowest quarterly defensive output and scoring margin totals still come in the first half of games, but in the second quarter.

Series History

Notre Dame Leads 4-0

Home: 2-0, Away: 2-0, Neutral: 0-0

Date	Site	Result	Score
11/27/10	Winston-Salem, N.C.	W	92-69
2/20/14	Notre Dame, Ind.	W	86-61
2/1/15	Winston-Salem, N.C.	W	92-63
2/18/16	Notre Dame, Ind.	W	86-52

Series Scoring	Total	Average
Notre Dame	356	89.0
Wake Forest	245	61.3

Current Win Streak: Notre Dame - 4
Muffet McGraw vs. Wake Forest: 0-3
Jen Hoover vs. Notre Dame: 0-3
McGraw vs. Hoover: 3-0
ND Biggest Win: 34 (86-52 on 2/18/16)
WF Biggest Win: None
ND Longest Win Streak: 4 (2010-current)
WF Longest Win Streak: None

THE TALE OF THE TAPE

	ND	WF
Overall/conference record	13-2/0-0	9-4/0-0
AP/WBCA-USA Today poll	7/6	NR/NR

SCORING

Points scored per game	78.8	66.2
Points allowed per game	57.3	59.9
Field goal percentage	.484	.413
Three-point percentage	.380	.280
Free throw percentage	.680	.648

REBOUNDING

Rebounds per game	41.9	43.1
Opponent rebs. per game	32.1	35.2
Rebounding margin	+9.7	+7.9

OTHER

Assists per game	18.9	12.5
Turnovers per game	14.1	15.0
Assist/turnover ratio	1.3	-0.7
Steals per game	10.1	7.9
Blocked shots per game	4.7	3.6

CONSISTENT ACC SUCCESS FOR IRISH

- Since joining the ACC for the 2013-14 season, Notre Dame has been the league's top program, compiling a 48-2 regular season record and winning three consecutive regular season and tournament championship doubles.
- The first loss came at Miami on Jan. 8, 2015, and the Irish won all 29 regular season games and 35 games in a row vs. ACC teams including conference tournament play until the Dec. 29 loss at NC State.
- The 35-game ACC streak including tournament games is the 15th-longest in NCAA history and the second-longest in ACC history behind a 51-game run by Duke from 2001-04.
- The 29-game ACC regular season winning streak is the 24th-longest such streak in NCAA history and the second-longest in ACC history behind just a 42-game run by Duke from 2001-04.

Longest Conf. Win Streaks (Inc. Tourn.)

No.	Name	Conf.	Years	Wins
1.	Texas	Southwest	1981-90	143
...				
11.	Duke	ACC	2001-04	51*
12.	Coppin State	MEAC	2005-07	49
13.	Maine	America East	1995-98	41
14.	Vermont	NAC/America East	1991-94	36
15.	Notre Dame	ACC	2015-16	35

*ACC Record

CHECKING THE NCAA LEADERS

- The season is nearing its midway point, but several of Notre Dame's top players have ascended to spots among the best in the country already in 2016-17.
- *NCAA leaders below are from the Tuesday, Jan. 3 update.*
- Some team categories where the Irish collectively excel and rank in the top 20 include assists (5th with 284), assists per game (8th at 18.9), field goal percentage (9th at 48.4%), assist to turnover ratio (11th at 1.34), scoring margin (13th at +21.5), rebounds (18th at 628) and rebounding margin (18th at 9.7).
- Two-time Nancy Lieberman Award finalist **Lindsay Allen** has made a quick claim to her status as the country's top point guard, not only in how she keeps the Irish under control, but also for her passing ability. Allen is third nationally with 109 assists and eighth with 7.3 assists per game. Allen is currently seventh with an assist-to-turnover ratio of 3.52 and led the nation in this field entering the Dec. 20 game at Michigan State. She leads the ACC in all three categories as well.
- Allen's 668 career assists rank second among active players behind only Northwestern's Ashley Deary who has 686.
- Allen is also 45th nationally in steals (35).
- **Brianna Turner** has shot the ball well this year and stands 22nd nationally with her field goal percentage of 58.0%. Her recent surge has also left her 22nd nationally in blocked shots with 32.
- **Arike Ogunbowale** has already claimed an espnW National Player of the Week honor and an ACC Player of the Week accolade. Her 3-point shooting, instrumental to each award, ranks as the country's best. Ogunbowale entered the Valparaiso game tied for first nationally with a 60.9% shooting percentage from downtown. Unfortunately, she has no longer taken the minimum number of shots to qualify. She does stand 68th nationally with 81 field goals made and 61st with 185 total points.

IRISH DON'T STAY DOWN FOR LONG

- One of the hallmarks of Notre Dame's recent run of success has been its ability to get back up after being knocked down.
- The Irish have not lost consecutive games in six years, stemming back to a Nov. 18, 2010, loss to No. 15 UCLA, 86-83 in double overtime, and a Nov. 21, 2010, loss at No. 9 Kentucky, 81-76.
- Including that loss to the Wildcats, followed up by a win against IUPUI, Notre Dame has bounced back to win its next contest following each of its last 21 losses.
- The Irish are 3-0 this year following a loss, downing No. 16 DePaul on Dec. 10, three days after losing to No. 1 UConn, and beating Georgia Tech on Jan. 2 to bounce back from the Dec. 29 loss at NC State. Notre Dame's season-opening win over Central Michigan also recovered the team from its 2016 NCAA Sweet 16 loss to Stanford.
- Notre Dame has not lost consecutive conference games since falling at St. John's and Georgetown on Feb. 16 and 20, 2010, respectively.
- The NC State loss was Notre Dame's first in a conference opener since losing at St. John's, 66-63, on Jan. 4, 2006. In 21 years as a member of the BIG EAST (18) and ACC (3), only once have the Irish started a league slate 0-2 with that coming in 2006. Three days after the St. John's loss, the Irish fell at home to Seton Hall, 74-61, before rebounding with a win over Marquette.

GETTING A LEAD AND KEEPING IT

- The Irish are tough to beat once they gain an advantage in a contest and the Dec. 10 DePaul game saw a milestone in this regard. The contest marked the 150th consecutive win for the Irish when Notre Dame led at halftime.
- The last time the Irish led a game after 20 minutes but did not win the contest came on Feb. 12, 2012, when Notre Dame led West Virginia 33-30 at intermission but would go on to lose to the Mountaineers, 65-63.
- This trend is not a new one for the Irish. Notre Dame is 390-19 (.954) since 2000-01 when leading at the half, including wins in each of the last 154 instances.

McGRAW RADIO SHOW DEBUTS JAN. 9

- For the first time, **Muffet McGraw** will have her own local radio show as the Muffet McGraw Show Presented by TireRack.com debuts Jan. 9 at O'Rourke's Public House, conveniently located in Eddy Street Commons, across the street from Notre Dame's campus.
- The hour-long show, which begins at 6 p.m., will be hosted by **Bob Nagle**, now in his 12th year as the radio voice of the Irish women's basketball team. It will be broadcast live locally on 92.1 Pulse FM and also be available over the internet at WatchND.tv. The shows will also be archived as Notre Dame Athletics Podcasts which are presented by Nissan.
- Each episode will also feature interviews with a current student-athlete, a member of the Irish coaching staff and also a feature on a select former player. Fans will have an opportunity to ask questions of coach McGraw and her guests along with winning prizes.
- Five shows, all on Monday nights, are planned for the 2016-17 season with the dates being Jan. 9, Jan. 23, Feb. 13, Feb. 20 and Feb. 27.

Around the ACC (Jan. 3)

ACC Standings

Team	Conf.	Overall
NC State (RV/23)	2-0	12-3
Virginia Tech (18/18)	1-0	14-0
Duke (13/15)	1-0	13-1
Boston College	1-0	8-6
NOTRE DAME (7/6)	1-1	13-2
Florida State (6/8)	1-1	13-2
Miami (14/14)	1-1	12-2
Louisville (8/9)	1-1	13-3
Syracuse (RV/25)	1-1	10-5
North Carolina	0-1	11-3
Georgia Tech	0-1	11-3
Virginia	0-1	11-3
Clemson	0-1	11-3
Pittsburgh	0-1	9-5
Wake Forest	0-0	9-4

ACC Preseason Predictions

2016-17 Predicted Order of Finish (First Place Votes)

	Blue Ribbon Panel	Coaches
1.	Notre Dame (44)	Notre Dame (13)
2.	Louisville (8)	Louisville (1)
3.	Florida State (2)	Florida State (1)
4.	Syracuse	Syracuse
5.	Miami	Miami
6.	Duke	Duke
7.	NC State	NC State
8.	North Carolina	Georgia Tech
9.	Georgia Tech	North Carolina
10.	Virginia	Virginia
11.	Wake Forest	Wake Forest
12.	Virginia Tech	Virginia Tech
13.	Pittsburgh	Boston College
14.	Boston College	Pittsburgh
15.	Clemson	Clemson

Blue Ribbon & Coaches Preseason Player of the Year
Myisha Hines-Allen, Jr., F, Louisville

2016-17 Blue Ribbon Panel Preseason All-ACC Team

Rebecca Greenwell, R-Jr., G, Duke
Leticia Romero, Sr., G, Florida State
Shakayla Thomas, Jr., G, Florida State
Asia Durr, So., G, Louisville
Myisha Hines-Allen, Jr., F, Louisville
Mariya Moore, Jr., F, Louisville
Adrienne Motley, Sr., G, Miami
Lindsay Allen, Sr., G, Notre Dame
Brianna Turner Jr., F, Notre Dame
Alexis Peterson, Sr., G, Syracuse

2016-17 Coaches Preseason All-ACC Team

Rebecca Greenwell, R-Jr., G, Duke
Leticia Romero, Sr., G, Florida State
Shakayla Thomas, Jr., G, Florida State
Myisha Hines-Allen, Jr., F, Louisville
Mariya Moore, Jr., F, Louisville
Asia Durr, So., G, Louisville
Adrienne Motley, Sr., G, Miami
Brianna Turner, Jr., F, Notre Dame
Lindsay Allen, Sr., G, Notre Dame
Alexis Peterson, Sr., G, Syracuse

2016-17 Blue Ribbon Panel Newcomer Watch List

Lexie Brown, Jr., G, Duke
Leaonna Odom, Fr, F, Duke
Chatrice White, Jr., C, Florida State
Erin Boley, Fr., F, Notre Dame
Jackie Young, Fr., G, Notre Dame

2016-17 Coaches Newcomer Watch List

Lexie Brown, Jr., G, Duke
Leaonna Odom, Fr, F, Duke
Chatrice White, Jr., C, Florida State
Erin Boley, Fr., F, Notre Dame
Jackie Young, Fr., G, Notre Dame

**Associated Press Poll
(Jan. 2)**

Rk.	Team (1st-place votes)	Record	Points	Lst Wk.
1	• Connecticut (33)	13-0	825	1
2	Baylor	13-1	781	3
3	Maryland	13-1	739	4
4	Mississippi State	15-0	714	5
5	South Carolina	11-1	691	6
6	• Florida State	13-1	654	7
7	Notre Dame	12-2	651	2
8	• Louisville	13-2	610	8
9	UCLA	11-2	551	10
10	Stanford	12-2	497	13
11	Ohio State	12-4	440	14
12	• Washington	14-2	418	9
13	• Duke	12-1	415	15
14	• Miami (FL)	11-2	405	11
15	Texas	8-4	324	16
16	Oregon State	13-1	304	22
17	West Virginia	13-1	289	12
18	• Virginia Tech	13-0	282	19
19	Arizona State	10-3	256	18
T20	Oklahoma	11-3	160	24
T20	California	13-1	160	21
22	South Florida	11-1	146	23
23	• DePaul	10-4	88	NR
24	Kentucky	9-5	71	17
25	Kansas State	11-3	54	NR

Others receiving votes: • Tennessee 42, Colorado 38, • Syracuse 37, • NC State 26, Texas A&M 11, Utah 10, Mississippi 6, • Green Bay 5, Michigan 5, Southern Cal 5, Boise State 5, Northwestern 4, Marquette 3, Oklahoma State 2, • Georgia Tech 1.

**USA Today Coaches Poll
(Jan. 3)**

Rk.	Team (1st-place votes)	Points	Rec.	Lst. Wk.
1	• Connecticut (32)	800	13-0	1
2	Baylor	747	13-1	4
3	Maryland	723	13-1	3
4	Mississippi State	701	15-0	5
5	South Carolina	681	11-1	6
6	Notre Dame	637	13-2	2
7	UCLA	578	11-2	10
8	• Florida State	533	13-2	7
9	• Louisville	499	13-3	8
10	Stanford	475	12-2	14
11	• Washington	444	14-2	9
12	Oregon State	439	13-1	15
13	Ohio State	430	12-4	13
14	• Miami (Fla.)	387	12-2	11
15	• Duke	383	13-1	17
16	West Virginia	304	13-1	12
17	Texas	284	8-4	16
18	• Virginia Tech	249	14-0	20
19	Arizona State	235	10-3	19
20	California	204	13-1	18
21	• DePaul	140	11-4	22
22	South Florida	110	11-1	25
23	• NC State	107	12-3	NR
24	Oklahoma	97	11-3	24
25	• Syracuse	83	10-5	21

Others Receiving Votes: • Michigan State 32; Kentucky 17; Northwestern 17; • Green Bay 16; Michigan 11; • Tennessee 11; Oklahoma State 7; Texas A&M 6; Kansas State 5; Tulane 3; Utah 3; Temple 2.

Notre Dame in the Polls

Date	AP	Coaches
Preseason	1	2
November 14	1	1
November 21	1	1
November 28	1	1
December 5	2	1
December 12	2	2
December 19	2	2
December 26	2	2
January 2	7	6

IRISH ROUTINELY PLAY THE BEST

- Notre Dame ranks second in nation in the NCAA's strength of schedule measure as its opposition has combined for a .754 winning percentage. That mark is outdistanced only by UConn's .767.
- This trend should continue with the rigors of ACC play. Measuring both past and future opponents, Notre Dame's .765 opponents' winning percentage is the best nationally, ahead of second place Kentucky's .749.
- Prior to the Dec. 27 game at four-time defending Southern Conference champion Chattanooga, every team Notre Dame had faced this year entered the game with both a winning record and no more than three losses, including seven undefeated teams.
- As a curious function of opening the season with the 16-team bracketed Preseason WNIT, along with winning each contest itself, each of Notre Dame's first six games this year saw a matchup of undefeated teams.
- UConn was the seventh undefeated team the Irish faced in the first nine games this season - all of which saw Notre Dame come into the contest undefeated as well.
- Notre Dame opened 2016-17 by facing six similarly undefeated schools in Central Michigan (0-0), Fordham (1-0), Green Bay (2-0), Washington (3-0), Louisiana-Lafayette (1-0) and TCU (4-0), defeating each of them.
- The Nov. 30 game at then-5-2 Iowa in the ACC/Big Ten Challenge was the first for the Irish this season against a team which had previously lost a game.

McGRAW NOMINATED FOR HALL OF FAME

- Already enshrined in the Women's Basketball Hall of Fame, **Muffet McGraw** took a step towards the sport's ultimate lifetime honor on Dec. 21 as she was included on the list of nominees for the Naismith Memorial Basketball Hall of Fame's Class of 2017.
- A finalist for enshrinement in 2016, McGraw joins a star-studded field which will be pared to a list of finalists to be announced on Feb. 18 at the NBA All-Star Game in New Orleans and then ultimately to the list of enshrinees, to be announced on April 3 at the men's Final Four in Arizona.
- McGraw, who guided the Irish to the 2001 national championship and seven Final Four appearances, is the winningest single-sport coach in Irish lore with 744 wins. Over her 30-year coaching career, McGraw is 832-265 (.758), making her the sixth-winningest active coach nationally and the 10th-winningest all-time at the Division I level.
- She is the 2017 recipient of the Wooden Awards' Legends of Coaching Award, becoming just the third female to receive this honor, joining Tennessee's Pat Summitt and Stanford's Tara VanDerveer. She is the fourth women's coach to be recognized with this honor, joining Summitt, VanDerveer and UConn's Geno Auriemma.
- Among her many accomplishments, McGraw is one of five coaches (men's or women's) in Division I history with 800 wins, seven Final Fours and five NCAA title game appearances, joining the elite company of Summitt, Auriemma, Duke men's coach Mike Krzyzewski and the late North Carolina men's coach Dean Smith, all of whom are enshrined in the Naismith Memorial Basketball Hall of Fame.
- She is also the only coach to be named the consensus national coach of the year three times, sweeping the Associated Press, Women's Basketball Coaches Association, Naismith Award and United States Basketball Writers Association honors in 2001, 2013 and 2014.

2016-17 Honors

Lindsay Allen, Sr., G

- ▶ Preseason WNIT All-Tournament Team
- ▶ Naismith Trophy Watch List
- ▶ Wade Award Watch List
- ▶ Wooden Award Preseason Top 30
- ▶ Nancy Lieberman Award Watch List
- ▶ Preseason espnW #10 player in the nation
- ▶ Preseason All-ACC (Blue Ribbon & Coaches)

Erin Boley, Fr., F

- ▶ ACC Newcomer Watch List (Blue Ribbon & Coaches)

Arike Ogunbowale, So., G

- ▶ espnW National Player of the Week (Nov. 21)
- ▶ Preseason WNIT Tournament MVP
- ▶ Preseason WNIT All-Tournament Team
- ▶ ACC Player of the Week (Nov. 14)
- ▶ Naismith Trophy Watch List

Brianna Turner, Jr., F

- ▶ ACC Player of the Week (Dec. 12)
- ▶ Preseason AP All-American
- ▶ Naismith Trophy Watch List
- ▶ Wade Award Watch List
- ▶ Wooden Award Preseason Top 30
- ▶ Preseason espnW #2 player in the nation
- ▶ Preseason All-ACC (Blue Ribbon & Coaches)

Jackie Young, Fr., G

- ▶ ACC Freshman of the Week (Dec. 5)
- ▶ ACC Newcomer Watch List (Blue Ribbon & Coaches)

Muffet McGraw

- ▶ Naismith Basketball Hall of Fame Nominee
- ▶ Wooden Legends of Coaching Award

11 WAS HEAVEN

- The Dec. 20 game at Michigan State marked the first one this year when all 11 players were available to play and the first where all 11 saw game action.
- Although limited as she continues to recover from an ankle sprain suffered on Dec. 7 against UConn, **Jackie Young** checked back into the Irish lineup late in the first quarter at the Breslin Center for the first time since UConn game.
- Young played just two minutes and did not record any statistics before yielding to her still-sore ankle. Fellow former Indiana Miss Basketball **Ali Patberg** continued her recovery from the after-effects of a virus at Michigan State as she played the game's final minute. Patberg did not play from Nov. 17 until Dec. 18.
- The Irish were able to make it consecutive games working all 11 players into the game on Dec. 27 at Chattanooga.

13 WINS THROUGH 15 GAMES

- The 2016-17 Irish needed just 11 games to hit the double figures mark in victories with 10 and have since moved to 13-2 on the year. This high rate of success is not uncommon.
- This is the ninth time in the past 10 seasons that Notre Dame has started a season 13-2 or better.
- Notre Dame started the season at 15-0 in 2009-10 and 2013-14. The Irish went 14-1 in 2008-09, 2011-12, 2012-13, 2014-15, 2015-16 and 2016-17. The Irish were 13-2 in 2007-08 after 15 games.
- The only exception in this 10-year run of starting at least 13-2 was the 2010-11 season when the Irish stood at 12-3 after 15 games.

ALLEN ASSIST CHART WATCH

- **Lindsay Allen's** name appears countless places in Notre Dame's record book and she moved up one rung on a major career-leaders chart on Dec. 27 at Chattanooga. Her 12 assists against the Mocs gave her 656 in her career assists, passing **Mollie Peirick's** 651 for fourth in school history. She now boasts 668.
- Allen has reached this total at a clip of 5.2 assists per game - ranking third in Irish lore behind just **Mary Gavin** (7.0) and **Niele Ivey** (5.5).
- Allen not only is leaving an impact on the Notre Dame records, but, as a part of the first class of four-year ACC Irish players, she is also historically doing it in conference history. Allen stands fifth in ACC history for the most career assists.

ND Career Assist Leaders

No.	Name	Years	Assists
1.	Mary Gavin	1984-88	778
2.	Skylar Diggins	2009-13	745
3.	Niele Ivey	1996-01	727
4.	Lindsay Allen	2013-	668
5.	Mollie Peirick	1994-97	651

ACC Career Assist Leaders

No.	Name, School	Years	Assists
1.	Sharnee Zoll, Virginia	2004-08	785
2.	Kristi Toliver, Maryland	2005-09	751
3.	Dawn Staley, Virginia	1989-92	729
4.	Nikki Teasley, UNC	1998-00, 02	728
5.	Lindsay Allen, ND	2013-	668

ANOTHER NICE NOVEMBER FOR NOTRE DAME

- Notre Dame went a perfect 7-0 in November, continuing a trend of hot starts for the Irish. The Irish have won 32 consecutive games in the month of November, running back to a Nov. 20, 2011, loss at No. 1 Baylor. In the 30 years under **Muffet McGraw**, Notre Dame is 108-20 (.844) in November, including a 64-4 (.941) mark at home.
- Highlights from this season's opening month include winning four games in nine days to claim the Preseason WNIT championship, defeating No. 17 Washington in the title game. **Arike Ogunbowale** earned tournament MVP honors while **Lindsay Allen** joined her on the all-tournament squad. The Irish went out of their way to create a Shamrock Series-style Homecoming game for Houston-area native **Brianna Turner**, defeating Louisiana-Lafayette in a unique contest that was played on two different courts. Notre Dame capped the month with a quality win over Iowa at Carver-Hawkeye Arena in the ACC/Big Ten Challenge.

REMEMBERED FOR CENTURIES

- Notre Dame has not only hit the century mark twice thus far in 2016-17, but the Irish have twice tallied at least 107.
- The Irish beat Central Michigan, 107-57, on Nov. 11 and downed Valparaiso, 114-54, on Dec. 4.
- The last time Notre Dame twice scored at least 107 points in a season came in 2011-12 when the Irish beat Mercer, 128-42, and Pittsburgh, 120-44.
- The 114 points scored against Valparaiso ties for the 12th-highest scoring output in the nation this year. Baylor has the high (as of Dec. 26) from their 140-32 win over Winthrop on Dec. 15. Notre Dame is tied with Northern Illinois' 114-104 2OT win over Milwaukee on Nov. 16.

BASKETBALL U?

- Notre Dame was the last school in the nation whose women's and men's basketball programs were both undefeated.
- Curiously, both teams were finally handed their first losses by the top-ranked school and defending national champion from their respective genders.
- The Irish women's team stood at 8-0 before falling to No. 1 UConn on Dec. 7. Notre Dame's men's team was 9-0 before losing to No. 1 Villanova on Dec. 10 in Newark, New Jersey.
- The dual dominance was best displayed on Dec. 4 as the teams combined to sweep a home doubleheader by a 114-point margin. Notre Dame's women's team began the twin-bill with a 114-54 win over Valparaiso while the Irish men provided a 107-53 victory over North Carolina A&T in the nightcap.

TURNER SWATS AWAY 200TH SHOT

- As a part of a six-block night at Chattanooga on Dec. 27, junior **Brianna Turner** recorded her 200th career blocked shot when she rejected Jasmine Joyner's shot with 8:19 left in the third quarter for her fourth block of the game.
- Turner is the third Irish player with 200 career blocks, joining **Ruth Riley** (370) and **Devereaux Peters** (227).
- Turner ranks 11th among all active players nationally with her 209 career blocks and third among juniors.
- Additionally, Turner's 209 blocks are presently tied for 14th in ACC history with former Florida State star Brooke Wyckoff (1998-01).
- Turner has found her shot-blocking form of late. After swatting away just 14 shots over Notre Dame's first 11 games, she has recorded 18 blocks in the past four games.

ND Career Blocked Shot Leaders

No.	Name	Years	Points
1.	Ruth Riley	1997-01	370
2.	Devereaux Peters	2007-12	227
3.	Brianna Turner	2014-	209

MATCHING MILLENNIAL MILESTONES

- Less than two minutes into the Iowa game on Nov. 30, **Brianna Turner** became the 36th player in Irish lore to crack the 1,000 career point plateau when **Marina Mabrey** lobbed a pass over the arms of a defender in the paint.
- **Lindsay Allen** had previously hit the 1,000-point marker this season during the game on Nov. 17 against Green Bay.
- Notre Dame last had two players reach the 1,000 career point plateau in the same season in 2013 when **Kayla McBride** and **Natalie Achonwa** each hit the millennial mark. Seven other Irish teams also saw two players hit the milestone but the school record of three was set back in 1985 (**Trena Keys**, **Mary Beth Schueth** and **Carrie Bates**).
- Notre Dame has seen at least one player reach 1,000 career points in eight of the last nine years with the exception coming in 2014-15.

ND Career Scoring Leaders

No.	Name	Years	Points
1.	Skylar Diggins	2009-13	2,357
2.	Beth Morgan (Cunningham)	1993-97	2,322
...			
26.	Krissi Davis	1987-91	1,194
27.	Courtney LaVere	2002-06	1,150
28.	Becca Bruszewski	2007-11	1,148
29.	Brianna Turner	2014-	1,142
30.	Lindsay Allen	2013-	1,112

Notre Dame's Record When...

Day of the Week

Sunday	3-0
Monday	2-0
Tuesday	3-0
Wednesday	1-1
Thursday	1-1
Friday	1-0
Saturday	2-0

Time of Game

Day games (before 6 p.m. local time)	4-0
Night games (6 p.m. or later local time)	9-2

Location

Home games	6-1
Road games	6-1
Neutral site games	1-0

Halftime score

Leading at the half	13-0
Tied at the half	0-1
Trailing at the half	0-1

Individual scoring

Two or fewer double-figure scorers	1-2
Three double-figure scorers	2-0
Four double-figure scorers	8-0
Five or more double-figure scorers	2-0

Rebounding margin

Grab more rebounds than opponents	10-0
Grab same number of rebounds	1-1
Grab fewer rebounds than opponents	2-1

Field goal shooting

Higher pct. than opponent	11-0
Same pct. as opponent	0-0
Lower pct. than opponent	2-2
Shoot 45% or better	7-0
Shoot less than 45%	6-2
Hold opponent under 40%	9-0

Free throw margin

Make more free throws	11-0
Make same number of free throws	1-0
Make fewer free throws	1-2

Turnovers

Commit fewer turnovers	10-1
Commit same number of turnovers	0-0
Commit more turnovers	3-1

Uniform Combinations

In white jerseys with blue trim	7-0
In white jerseys with green trim	0-1
In blue jerseys	6-1

Miscellaneous

Vs. Top 25 (AP or WBCA/USA Today polls)	2-1
When ranked higher	13-1
When ranked lower	0-1
On commercial television	4-1
In overtime games	0-0

Margin of Victory

1-5 points	1-0
6-10 points	0-1
11-15 points	3-1
16-20 points	3-0
21+ points	6-0

Month

November	7-0
December	5-2
January	1-0
February	0-0
March	0-0
April	0-0

Irish Specialty Stats

Date	Opp.	Paint	OffTO	2ndCh	FBreak	Bench
11/11	CMU	46/16	31/10	11/7	8/2	39/17
11/14	Fordham	42/16	17/11	11/2	4/0	18/9
11/17	Green Bay	28/24	18/5	12/5	6/2	8/22
11/20	Wash.	32/22	19/5	10/9	6/0	13/18
11/22	v. ULL	58/19	24/16	22/4	10/0	27/7
11/26	TCU	36/26	16/11	23/3	4/2	24/10
11/30	@Iowa	42/26	21/12	9/11	10/4	16/12
12/4	Valpo	70/16	50/14	13/4	28/6	49/24
12/7	UConn	30/42	16/20	14/15	6/10	15/4
12/10	@DePaul	40/24	13/23	12/6	5/8	19/8
12/18	@Toledo	44/28	26/21	7/9	8/0	16/29
12/20	@MSU	48/26	8/9	15/7	8/13	17/19
12/27	@UTC	54/22	16/20	18/12	6/0	18/12
12/29	@NCSU	30/24	16/17	11/11	7/11	7/12
1/2	@GT	32/18	14/10	5/11	8/0	12/19

* Notre Dame is listed first in each column

Season Totals

Points in the Paint	Total	Average
Notre Dame	632	42.1
Opponents	349	23.3

Points Off Turnovers	Total	Average
Notre Dame	315	21.0
Opponents	204	13.6

Second Chance Points	Total	Average
Notre Dame	191	12.9
Opponents	116	7.7

Fast Break Points	Total	Average
Notre Dame	124	8.3
Opponents	58	3.9

Bench Scoring	Total	Average
Notre Dame	298	19.9
Opponents	204	13.6

ALLEN TRIPLE TROUBLE FOR MOCS

- At Chattanooga on Dec. 27, senior **Lindsay Allen** recorded the sixth triple-double in Notre Dame history, scoring 11 points, grabbing a career-high 11 rebounds and matching her career high with 12 assists. Remarkably, the two-time Nancy Lieberman Award finalist and 1,000-point scorer had never previously recorded so much as a double-double.
- Allen was the first player in the ACC to record a triple-double so far in 2016-17 and remains one of just two to do so, joining Louisville's Mariya Moore (Dec. 29 vs. Syracuse).
- **Marina Mabrey** recorded a triple-double last year at Valparaiso. The NC State game marked the first time the Irish have ever put a lineup on the court featuring two players who each have a collegiate triple-double to their credit.
- The night would have been noteworthy for Allen regardless as she started her 125th career game, never missing one. The 125 consecutive starts is by far a school record and her 125th start overall moved her past **Ruth Riley** and **Lindsay Schrader** (both 124) into third place in school history. Next on the list is **Alicia Ratay** at 129 and then, finally, **Skylar Diggins** at 144. The Irish are currently 119-8 (.937) in Allen's 127 starts.

ND Triple-Doubles

Player	Date	Opponent	Stats
Lindsay Allen	12/27/16	at Chattanooga	11p, 11r, 12a
Marina Mabrey	11/23/15	at Valparaiso	18p, 10a, 12s
Skylar Diggins	2/24/13	at DePaul	17p, 10r, 10a
Skylar Diggins	3/27/12	vs. Maryland*	22p, 10r, 11a
Sara Liebscher	2/15/90	vs. Detroit	17p, 12r, 10a
Mary Gavin	1/31/87	vs. Marquette	11p, 14a, 10s

* NCAA Elite Eight (at PNC Arena, Raleigh, N.C.)

TURNER NAMED ACC PLAYER OF THE WEEK

- For **Brianna Turner**, two double-doubles against two ranked foes added up to one nice award as the junior forward was named the ACC's Player of the Week on Dec. 12.
- Facing No. 1 UConn on Dec. 7, Turner scored 16 points and grabbed 12 rebounds -- eight of them off of the offensive glass. Three nights later, on the road at No. 16 DePaul, Turner scored 14 points and added 11 rebounds. She blocked a pair of shots in each contest. Turner shot an even 50% for the week (11-for-22) from the floor and connected on eight of her nine free throw attempts.
- A preseason All-American, Turner has four double-doubles on the season including one in each of Notre Dame's three games this year against ranked opponents. In addition to her strong showings against both UConn and DePaul, Turner scored 10 points and added 12 rebounds in Notre Dame's win over No. 17 Washington in the championship game of the Preseason WNIT on Nov. 20.
- Her performance against UConn marked the first time the Huskies had allowed a double-double with at least 12 points and rebounds in nearly a year, dating back to when USF's Courtney Williams scored 26 and grabbed 13 boards on Jan. 11.

YOUNG NAMED ACC ROOKIE OF THE WEEK

- Freshman **Jackie Young** collected the first of what could be many honors over the potential Irish career on Dec. 5 when she was named the ACC's Rookie of the Week.
- Young had a break-through game in the Dec. 4, 114-54, win over Valparaiso, scoring 20 points -- the high-water mark of her young Irish career. Young connected on eight of her nine shots in the contest and went 3-of-4 from 3-point

range. She also had a career-high six steals against the Crusaders to go with five rebounds and three assists. Earlier in the week, on Nov. 30, Young tallied five points and grabbed three rebounds as the Irish claimed a 73-58 win at Iowa on Nov. 30 during the ACC/Big Ten Challenge.

OH GOODNESS, OGUNBOWALE!

- The first round of the Preseason WNIT proved to be a banner night for sophomore **Arike Ogunbowale** who obliterated her previous career high of 21 by scoring 30 points in Notre Dame's Nov. 11 win over Central Michigan.
- Ogunbowale capped her four-game Preseason WNIT run by scoring 17 points while adding five rebounds, four steals and three assists in Notre Dame's win over No. 17 Washington.
- Her efforts over the event earned her both tournament MVP honors and espnW's National Player of the Week accolade.
- For her performance against the Chippewas, Ogunbowale was named the ACC's Player of the Week on Nov. 14.
- Ogunbowale hit all five of her 3-point attempts against CMU, a feat that had not been seen for the Irish in 16 years. Ogunbowale provided just the third game in Irish lore where a player took at least five 3-pointers and did not miss one.
- **Alicia Ratay** sank all seven of her 3-point shots at Rutgers on Feb. 19, 2000, while **Sheila McMillen** went a perfect five-for-five behind the arc against UConn on Dec. 8, 1998.
- Her 12-of-13 from the floor narrowly missed becoming a school record for field goal percentage. **Karen Robinson** set that mark by going 12-for-12 at St. Louis on Jan. 14, 1989. It also marked the first time a Notre Dame player had hit the 30-point mark since **Jewell Loyd** tallied 31 at Georgia Tech on Feb. 19, 2015.
- Ogunbowale also had two steals, two assists and three rebounds on the night.

IRISH STING YELLOW JACKETS IN BOUNCE-BACK WIN

- Notre Dame used a 23-2 run in the late first and early second quarters to pull away to an eventual 55-38 victory over Georgia Tech on Jan. 2 in Atlanta.
- **Arike Ogunbowale** led all scorers with 18 points while **Brianna Turner** narrowly missed a double-double with her nine points and 11 assists. **Lindsay Allen** also put forth a balanced stat line on the night with seven points, seven rebounds and eight assists. Ogunbowale had 14 points in the first half.
- In holding Georgia Tech to 38 points on its home floor, Notre Dame's defense shut down the Yellow Jackets better than any team has done as an Atlanta visitor since Virginia beat Georgia Tech, 61-38, on Jan. 10, 2005, at then-Alexander Memorial Coliseum.
- Notre Dame showed great form when it closed the first quarter in a 6-0 run and capped it delightfully with one of the transitional plays of the day. The Irish rode that momentum into the second quarter, which Notre Dame opened on a 17-2 run to take command of the contest.
- The Irish defense in particular stepped up in the opening quarter. The Yellow Jackets shot just 15% in the first 10 minutes connecting on just three of their 20 shots. Notre Dame's defense forced seven Georgia Tech turnovers in the first quarter, four of which included an Irish steal.
- While Georgia Tech did not shoot particularly well in that first quarter, great offensive rebounding kept the Yellow

Jackets in the game. Georgia Tech missed 17 shots in the first 10 minutes of play, but got the offensive rebound on 12 of them and only trailed 17-9. In the second quarter, the Yellow Jackets grabbed just one offensive rebound, and the Irish began to put the game out of reach.

NOTRE DAME FALLS AT NC STATE IN ACC OPENER

- While the fourth quarter of the Dec. 29 game at NC State saw Notre Dame fight valiantly in an effort to complete the largest comeback in school history - trimming a 19-point deficit to just five points with 1:31 left to play - the Irish could not override a determined Wolfpack. NC State hung on to claim a 70-62 upset win over the Irish in front of a frenzied Reynolds Coliseum crowd.

- **Marina Mabrey** scored 11 of her 22 points in the fourth quarter, often punctuated by passionate joyful arm gestures encouraging her teammates, but NC State's 13-0 run to open the second half ultimately proved decisive.

- Following that 13-0 run, the Wolfpack led, 47-28, with 4:42 left in the third quarter. The Irish record for largest come-from-behind-win is 18 points, set on Dec. 30, 2008, at Vanderbilt and matched against Duke on Nov. 26, 2011, during the Junkaroo Jam in the Bahamas. Down by 17 as the fourth quarter commenced, the Irish made that record sweat.

- A **Kathryn Westbeld** steal led to a Mabrey 3-pointer with 7:51 to play, making it an 11-point deficit and forcing a Wolfpack timeout. The lead went back to single digits when Lindsay Allen drained a three from the corner at the 7:02 mark to cap an 11-2 Irish run. Coming out of a media timeout, **Erin Boley** drained a three over an outstretched NC State defender to make it a six-point game with 4:40 to play. The deficit was whittled down to five points at 64-59 with 1:31 remaining as **Arike Ogunbowale** scored on a lay-up. The Wolfpack, however, would sink all six of their free-throw attempts in the game's final 1:09 to ice its upset victory, capping a strong 14-for-15 night from the charity stripe.

- Aside from Mabrey, Allen was the only other Notre Dame player in double figures, tallying 12 points. **Brianna Turner** scored just seven points before fouling out, snapping a string of 31 consecutive games scoring in double figures. That stretch finished as the third-longest such run in school history behind **Katryna Gaither's** string of 76 from 1994-97 and a 60-game stretch by **Jewell Loyd** from 2013-15.

IRISH FLY PAST MOCS

- In her role as a team captain, **Lindsay Allen** knows to put herself before others, something reflected in her pass-first mentality at point guard. Despite scoring over 1,000 career points, it is often how she moves the ball which has helped the Irish to a 118-7 record in her 125 career starts, hitting that milestone on Dec. 27 in a 79-58 win at Chattanooga.

- Facing the four-time defending Southern Conference champion on the road, Allen's halftime line saw eight assists, nine rebounds (already matching her career high) and just two points. **Muffet McGraw** foresaw Allen's first career double-double but also knew that she would have to interject herself into the offense for the selfless Allen to also get the sixth triple-double in Irish lore.

- "We didn't tell her about the triple-double part," McGraw said afterwards. "We just ran stuff where she would get shots and fortunately she made them. I really don't want to keep her in the game that long but it's a pretty special day when you get a triple-double so I was happy."

- "It means a lot," Allen said of McGraw's play calling helping

to set up her triple-double. "Coach McGraw is a legendary coach and it's very cool to see that she has that confidence in me and she wants to see me have that moment for myself my senior year. All credit goes to her."

- Allen finally did hit double digits in scoring on a jumper with 2:40 to play, exiting the game with 11 points, 12 assists (matching her career high) and a career-high 11 rebounds.

- Not to be overshadowed, **Brianna Turner** turned in a big night for the Irish, scoring 24 points and adding six blocked shots - one off of her career high - including the milestone 200th block of her career. **Kathryn Westbeld** came close to a double-double with 11 points and eight rebounds.

- The Irish shot 56.1% on the night (32-of-57) and won with their strong inside presence, outscoring the Mocs 54-22 in the paint. Notre Dame opened the game on a 10-0 run and never looked back en route to the win.

IVEY JOINS RING OF HONOR

- Prior to the Valparaiso game on Dec. 4, **Niele Ivey** became the third inductee into the Ring of Honor (joining **Ruth Riley** and **Skylar Diggins**) and the first of two this season as **Beth (Morgan) Cunningham** will join the ranks on Jan. 29 when the Irish play host to Virginia.

- Ivey has made immense contributions to the program both as a player and coach. Along with Karen and Kevin Keyes Family Head Women's Basketball Coach **Muffet McGraw** and associate head coach **Carol Owens**, Ivey is one of three connections to all seven Irish Final Four appearances.

- Ivey co-captained the 2001 national championship team along with Riley and earned All-America accolades that season. Ivey was a finalist for the 2001 Nancy Lieberman Award as the country's best point guard and claimed the 2001 Frances Pomeroy Naismith Award for the nation's best player 5-foot-8 or under. Ivey was a three-time All-BIG EAST pick who would go on to play in the WNBA for four years.

- The 2016 WBCA assistant coach of the year, Ivey has helped mentor some of the nation's top backcourts at Notre Dame, led by **Skylar Diggins**, **Jewell Loyd** and **Lindsay Allen**.

IRISH HELD UNANIMOUS POLE POSITION

- Notre Dame received the No. 1 spot in the preseason Associated Press poll. Notre Dame stood at No. 2 in the preseason coaches poll but leapt up to No. 1 on Nov. 15, surpassing defending national champion Connecticut.

- Despite being undefeated, the Irish slipped back to No. 2 in the AP poll on Dec. 5.

- This year marked Notre Dame's first time holding the AP's top spot entering a season.

- The only other time the Irish sat atop the AP poll came during the 2001 season when Notre Dame earned the No. 1 ranking for a total of five weeks - four straight from Jan. 22 to Feb. 12, regaining it on March 5.

- Before this season, Notre Dame's last game as the No. 1-ranked team in the country was a 78-76 loss to No. 2 UConn, in the BIG EAST final on March 6, 2001, at Gampel Pavilion. The Irish, carrying the No. 2 ranking, avenged that defeat to the Huskies by beating them in the NCAA Final Four en route to claiming the national championship two days later with a win over Purdue.

- The Irish have made a habit of standing among the nation's elite in the AP poll. This week, Notre Dame is in the top 10 for the 211th time, surpassing North Carolina's 204 for the 10th-most AP top 10 appearances all-time. No. 3 Baylor is ninth at

216 (and counting).

- Notre Dame has been ranked in the top 10 for each of the last 113 polls since a No. 11 ranking on Jan. 17, 2011.

McGRAW GETS LEGENDS OF COACHING HONOR

- Now in her 30th year at Notre Dame and 35th as a collegiate head coach, **Muffet McGraw's** legacy of success on the court is visible in the plethora of banners hanging above the Purcell Pavilion court. Her legacy of success off the court is plainly visible in the scores of Irish women's basketball alumni who have been successful in their professions and life.

- This dual-success has been recognized by the John R. Wooden Award Committee which on Oct. 11 announced McGraw as its 2017 Legends of Coaching Award recipient.

- The lifetime achievement award is presented to a singular college basketball coach who exemplifies Wooden's high standards of coaching success and personal achievement. The accolade is just the latest national honor for McGraw - the only three-time consensus national coach of the year.

- An enshrine in the Women's Basketball Hall of Fame and a 2016 finalist for induction in the Naismith Memorial Basketball Hall of Fame, McGraw is the third woman to receive the Legends of Coaching Award - an accolade first bestowed in 1999 upon Dean Smith of North Carolina. Its 18th recipient, McGraw joins Tennessee's Pat Summitt and Stanford's Tara VanDerveer as the lone female honorees.

IRISH WELCOME TWO CLASS OF 2021 SIGNEES

- Notre Dame received two National Letters of Intent from the Class of 2021 on Nov. 9 as forward **Danielle Patterson** and center **Mikayla Vaughn** signed on to continue their academic and athletic careers with the Irish.

- Standing at 6-foot-2, Patterson (Brooklyn, New York/The Mary Louis Academy) is the No. 5-ranked small forward in the country, according to espnW/HoopGurlz reporter Dan Olson.

- A five-star recruit, Patterson averaged 22 points, 10 rebounds, two steals and two assists as a junior. She led The Mary Louis Academy to an 18-8 record and an appearance in the Brooklyn/Queens semifinals in 2016. She participated in the U17 Team USA Trials as a junior and was selected to the 2016 New York City Pre-Season Top 10 list prior to this season.

- Throughout high school, Patterson guided two AAU squads to championships, including the Philadelphia Belles to the 15U Boo Williams Championship and the New Jersey Sparks to the 2015 Peach State Championship.

- Vaughn, a four-star recruit, averaged 15 points, 10 rebounds and two blocks per game as a junior at Friends' Central School, before transferring to Paul VI Catholic High School (Fairfax, Virginia) for her senior season. She was named co-captain of the team, guiding it to the league championship in back-to-back seasons.

- Vaughn, 6-foot-3, was named 2016 first-team Class A all-state in Pennsylvania, following the school's run to the PAISSA quarterfinals her junior year. She has thrice received All-Mainline first-team honors.

- Vaughn, like Patterson, was a member of the Philadelphia Belles. She played lacrosse her freshman year and contributed to the team's PAISSA state championship.

WHAT'S NEXT

- Notre Dame finds itself back on the road once again as the Irish fly to Miami for a 3 p.m. game on Sunday against the Hurricanes. ESPN2 will broadcast the game nationally.

2016-17 Notre Dame Women's Basketball Alphabetical Roster

No.	Name	Ht.	Pos.	Yr.	Hometown	Last Team (League)
15	Lindsay Allen	5-8	G	Sr.	Mitchellville, Md.	St. John's College
22	Erin Boley	6-2	F	Fr.	Hodgenville, Ky.	Elizabethtown HS
14	Mychal Johnson	5-7	G	Jr.	Huntington, W. Va.	Huntington St. Joseph HS
3	Marina Mabrey	5-11	G	So.	Belmar, N.J.	Manasquan HS
21	Kristina Nelson	6-4	F	Sr.	Buford, Ga.	Buford HS
24	Arike Ogunbowale	5-8	G	So.	Milwaukee, Wis.	Divine Savior Holy Angels HS
20	Ali Patberg	5-10	G	So.	Columbus, Ind.	Columbus North HS
35	Diamond Thompson	6-5	C	Sr.	Wheaton, Ill.	Wheaton Warrenville South HS
11	Brianna Turner	6-3	F	Jr.	Pearland, Texas	Manvel HS
33	Kathryn Westbeld	6-2	F	Jr.	Kettering, Ohio	Kettering Fairmont HS
5	Jackie Young	6-0	G	Fr.	Princeton, Ind.	Princeton Community HS

2016-17 Notre Dame Women's Basketball Numerical Roster

No.	Name	Ht.	Pos.	Yr.	Hometown	Last Team (League)
3	Marina Mabrey	5-11	G	So.	Belmar, N.J.	Manasquan HS
5	Jackie Young	6-0	G	Fr.	Princeton, Ind.	Princeton Community HS
11	Brianna Turner	6-3	F	Jr.	Pearland, Texas	Manvel HS
14	Mychal Johnson	5-7	G	Jr.	Huntington, W. Va.	Huntington St. Joseph HS
15	Lindsay Allen	5-8	G	Sr.	Mitchellville, Md.	St. John's College
20	Ali Patberg	5-10	G	So.	Columbus, Ind.	Columbus North HS
21	Kristina Nelson	6-4	F	Sr.	Buford, Ga.	Buford HS
22	Erin Boley	6-2	F	Fr.	Hodgenville, Ky.	Elizabethtown HS
24	Arike Ogunbowale	5-8	G	So.	Milwaukee, Wis.	Divine Savior Holy Angels HS
33	Kathryn Westbeld	6-2	F	Jr.	Kettering, Ohio	Kettering Fairmont HS
35	Diamond Thompson	6-5	C	Sr.	Wheaton, Ill.	Wheaton Warrenville South HS

Coaches and Staff

Muffet McGraw: Karen and Kevin Keyes Family Head Women's Basketball Coach (St. Joseph's (Pa.) '77)

Carol Owens: Associate Head Coach (Northern Illinois '90)

Niele Ivey: Associate Head Coach / Recruiting Coordinator (Notre Dame '00)

Beth Cunningham: Associate Coach (Notre Dame '97)

Katie Capps: Director of Basketball Operations (Western Kentucky '02)

Erica Williamson: Video Coordinator (Notre Dame '10)

Sharla Lewis: Special Events Coordinator (Chicago State '99)

Anne Marquez: Athletic Trainer (West Florida '01)

Pronunciation Key

3	Marina MAY-bree
11	bree-ON-uh Turner
22	Erin BOH-lee
24	uh-REE-kay OH-goan-buh-WALL-ay
--	knee-ELL Ivey

By State

GEORGIA	
Kristina Nelson	Buford
ILLINOIS	
Diamond Thompson	Wheaton
INDIANA	
Ali Patberg	Columbus
Jackie Young	Princeton
KENTUCKY	
Erin Boley	Hodgenville
MARYLAND	
Lindsay Allen	Mitchellville
NEW JERSEY	
Marina Mabrey	Belmar
OHIO	
Kathryn Westbeld	Kettering
TEXAS	
Brianna Turner	Pearland
WEST VIRGINIA	
Mychal Johnson	Huntington
WISCONSIN	
Arike Ogunbowale	Milwaukee

By Class

SENIORS		
Lindsay Allen	G	Mitchellville, Md.
Kristina Nelson	F	Buford, Ga.
Diamond Thompson	C	Wheaton, Ill.
JUNIORS		
Mychal Johnson	G	Huntington, W. Va.
Brianna Turner	F	Pearland, Texas
Kathryn Westbeld	F	Kettering, Ohio
SOPHOMORES		
Marina Mabrey	G	Belmar, N.J.
Arike Ogunbowale	G	Milwaukee, Wis.
Ali Patberg	G	Columbus, Ind.
FRESHMEN		
Erin Boley	F	Hodgenville, Ky.
Jackie Young	G	Princeton, Ind.

By Position

CENTER		
Diamond Thompson	C	Wheaton, Ill.
FORWARDS		
Erin Boley	F	Hodgenville, Ky.
Kristina Nelson	F	Buford, Ga.
Brianna Turner	F	Pearland, Texas
Kathryn Westbeld	F	Kettering, Ohio
GUARDS		
Lindsay Allen	G	Mitchellville, Md.
Mychal Johnson	G	Huntington, W. Va.
Marina Mabrey	G	Belmar, N.J.
Arike Ogunbowale	G	Milwaukee, Wis.
Ali Patberg	G	Columbus, Ind.
Jackie Young	G	Princeton, Ind.

Notre Dame Radio/TV Roster



**#3
MARINA
MABREY**
5-11 | G | So.
Belmar, N.J.
Manasquan



**#5
JACKIE
YOUNG**
6-0 | G | Fr.
Princeton, Ind.
Princeton Community



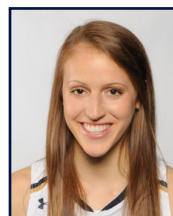
**#11
BRIANNA
TURNER**
6-3 | F | Jr.
Pearland, Texas
Manvel



**#14
MYCHAL
JOHNSON**
5-7 | G | Jr.
Huntington, W.Va.
Huntington St. Joseph



**#15
LINDSAY
ALLEN**
5-8 | G | Sr.
Mitchellville, Md.
St. John's College



**#20
ALI
PATBERG**
5-10 | G | So.
Columbus, Ind.
Columbus North



**#21
KRISTINA
NELSON**
6-4 | F | Sr.
Buford, Ga.
Buford



**#22
ERIN
BOLEY**
6-2 | F | Fr.
Hodgenville, Ky.
Elizabethtown



**#24
ARIKE
OGUNBOWALE**
5-8 | G | So.
Milwaukee, Wis.
Divine Savior Holy Angels



**#33
KATHRYN
WESTBELD**
6-2 | F | Jr.
Kettering, Ohio
Kettering Fairmont



**#35
DIAMOND
THOMPSON**
6-5 | C | Sr.
Wheaton, Ill.
Wheaton Warrenville South

Coaching and Support Staff



**MUFFET
McGRAW**
Head Coach
30th Year at ND
St. Joseph's '77



**CAROL
OWENS**
Assoc. Head Coach
17th Year at ND
N. Illinois '90



**NIELE
IVEY**
Assoc. Head Coach
10th Year at ND
Notre Dame '00



**BETH
CUNNINGHAM**
Associate Coach
5th Year at ND
Notre Dame '97



**KATIE
CAPPS**
Dir. of Basketball Ops.
2nd Year at ND
W. Kentucky '02



**ERICA
WILLIAMSON**
Video Coordinator
1st Year at ND
Notre Dame '10



**SHARLA
LEWIS**
Spec. Events Coord.
6th Year at ND
Chicago State '99



**ANNE
MARQUEZ**
Athletic Trainer
11th Year at ND
West Florida '01

Miscellaneous Notre Dame Statistics

LEADING SCORER

Brianna Turner	4 (24)
Arike Ogunbowale	8 (15)
Marina Mabrey	3 (9)
Lindsay Allen	1 (7)
Kathryn Westbeld	0 (2)
Jackie Young	1 (1)

LEADING REBOUNDER

Brianna Turner	6 (43)
Kathryn Westbeld	5 (23)
Arike Ogunbowale	1 (6)
Lindsay Allen	2 (5)
Kristina Nelson	2 (2)
Mychal Johnson	1 (1)
Diamond Thompson	0 (1)

LEADER IN ASSISTS

Lindsay Allen	14 (90)
Marina Mabrey	2 (4)
Kathryn Westbeld	0 (2)
Mychal Johnson	0 (1)

GAMES STARTED

Lindsay Allen	15 (127)
Brianna Turner	15 (79)
Kathryn Westbeld	15 (48)
Marina Mabrey	14 (16)
Arike Ogunbowale	14 (14)
Mychal Johnson	2 (2)

20-POINT SCORING GAMES

Opponents	3
Notre Dame	6

Brianna Turner	2 (12)
Lindsay Allen	0 (7)
Marina Mabrey	2 (3)
Arike Ogunbowale	1 (2)
Jackie Young	1 (1)

30-POINT SCORING GAMES

Opponents	1
Notre Dame	1

Arike Ogunbowale	1 (1)
------------------	-------

40-POINT SCORING GAMES

Opponents	0
Notre Dame	0

TECHNICAL/FLAGRANT FOULS

Opponents	0
Notre Dame	0

Lindsay Allen	0 (2)
---------------	-------

FOUR-POINT PLAYS

Opponents	1
Notre Dame	0

JUMP BALLS CONTROLLED

Opponents	3
Notre Dame	12

Brianna Turner	12-15 (.800)
----------------	--------------

FIRST SCORE

Opponents	3
Notre Dame	12

Brianna Turner	4
----------------	---

Arike Ogunbowale	4
------------------	---

Marina Mabrey	2
---------------	---

Lindsay Allen	1
---------------	---

Kathryn Westbeld	1
------------------	---

RUNS OF 10-0 OR BETTER

Opponents	3
Notre Dame	14

LARGEST HALFTIME LEAD

49 vs. Valparaiso, 12/4/16

LARGEST HALFTIME DEFICIT

6 at NC State, 12/29/16

LARGEST LEAD

62 vs. Valparaiso, 12/4/16

LARGEST DEFICIT

19 at NC State, 12/29/16

LARGEST DEFICIT

OVERCOME TO WIN
5 at Toledo, 12/18/16

LARGEST LEAD

GIVEN UP IN LOSS

4 vs. UConn, 12/7/16

LARGEST WIN

60 vs. Central Michigan, 11/11/16

60 vs. Valparaiso, 12/4/16

LARGEST DEFEAT

11 vs. UConn, 12/7/16

MOST CONSECUTIVE PTS

26 vs. Valparaiso, 12/4/16

MOST CONSECUTIVE OPP PTS

16 at NC State, 12/29/16

LONGEST WINNING STREAK

8 (Nov. 11-Dec. 4)

LONGEST LOSING STREAK

1 (Dec. 7-Dec. 10 & Dec. 29-Jan. 2)

LARGEST HOME CROWD

9,149 vs. UConn, 12/7/16

LARGEST ROAD CROWD

7,924 at Michigan State, 12/20/16

LARGEST NEUTRAL SITE CROWD

767 vs. UL-Lafayette, 11/22/16

NOTE: totals may not add up to games played due to ties ... figures in parentheses by player totals are career totals

Double-Figure Points

	2016-17	Career
Brianna Turner	13	66
Lindsay Allen	9	51
Arike Ogunbowale	11	34
Marina Mabrey	8	30
Kathryn Westbeld	7	29
Mychal Johnson	1	5
Jackie Young	3	3
Erin Boley	3	3
Kristina Nelson	0	2

Double-Figure Rebounds

	2016-17	Career
Brianna Turner	5	23
Kathryn Westbeld	1	5
Lindsay Allen	1	1

5-5-5 Games (aka "Stat Sheet Stuffers")

	2016-17	Career
Lindsay Allen	8	28
Brianna Turner	3	14
Marina Mabrey	1	2
Jackie Young	1	1
Kathryn Westbeld	1	1

NOTE: At least 5 in three of five statistical categories (points, rebounds, assists, steals or blocks)

Double-Doubles

	2016-17	Career
Brianna Turner	4	19
Kathryn Westbeld	1	3
Marina Mabrey	0	1

Triple-Doubles

	2016-17	Career
Lindsay Allen	1	1
Marina Mabrey	0	1

Clutch Free Throws (final 5 min. + OT)

	FT-FTA	Pct.
Mychal Johnson	3-3	1.000
Erin Boley	15-16	.938
Marina Mabrey	9-10	.900
Jackie Young	3-4	.750
Brianna Turner	3-4	.750
Lindsay Allen	8-15	.533
Kristina Nelson	3-6	.500
Diamond Thompson	1-2	.500
Arike Ogunbowale	0-2	.000
'16-17 Team Totals	45-62	.726

The Last Time Notre Dame...

SCORING

Player scored 25 points: Marina Mabrey (26) at Toledo, 12/18/16
Player scored 30 points: Arike Ogunbowale (31) vs. Central Michigan, 11/11/16
Player scored 35 points: see 40 points
Player scored 40 points: Jewell Loyd (41) at DePaul, 12/10/14
Player came off bench and scored 20 points: Jackie Young (20), vs. Valparaiso, 12/4/16
Two players scored 20 points: Madison Cable (25) & Lindsay Allen (20) vs. Ohio State, 12/2/15
Three players scored 20 points: Danielle Green (28), Sheila McMillen (26), Ruth Riley (23) vs. West Virginia, 1/7/99
Two players scored 25 points: Jewell Loyd (26) & Kayla McBride (25) vs. Duke, 3/9/14 (@ Greensboro, N.C.)
Player scored 25 points/consecutive games: Jewell Loyd (34 vs. Tennessee, 1/19/15; 29 vs. Georgia Tech, 1/22/15)
None in double figures: at Seton Hall, 2/8/04
One in double figures: Arike Ogunbowale (18) at Georgia Tech, 1/2/17
Six in double figures: Jackie Young (20), Arike Ogunbowale (18), Marina Mabrey (16), Erin Boley (15), Brianna Turner (13), Kathryn Westbeld (10), vs. Valparaiso, 12/4/16
Seven in double figures: see eight in double figures
Eight in double figures: Devereaux Peters (20), Natalie Achonwa (19), Kaila Turner (14), Natalie Novosel (13), Skylar Diggins (11), Brittany Mallory (11), Kayla McBride (11) and Markisha Wright (11) vs. Pittsburgh, 1/17/12
ND scored 50 points/half: See 60 points/half
ND scored 55 points/half: See 60 points/half
ND scored 60 points/half: 72 (1st half) vs. Valparaiso, 12/4/16
ND scored 50 points in both halves: 56 (1st) & 56 (2nd) vs. Central Michigan, 11/11/16
ND scored 100 points/game: 114 vs. Valparaiso, 12/4/16
ND scored 100 points/home game: 114 vs. Valparaiso, 12/4/16
ND scored 100 points/neutral site: 100 vs. Duquesne, 12/1/13 (@ Toronto, Ontario)
ND scored 100 points/conference game: 104 vs. Boston College, 1/11/15
ND scored fewer than 15 points/half: 11 (1st half) at West Virginia, 1/13/08
ND scored fewer than 20 points/half: 19 (1st half) at Connecticut, 1/16/10
ND scored fewer than 50 points/game: 44 at Connecticut, 3/8/10

FIELD-GOAL SHOOTING

Player made every shot from the field (min. 7): Taya Reimer (8-8) vs. Louisville, 2/23/15
ND shot 55 percent/game: 56.1 (32-57) at Chattanooga, 12/27/16
ND shot 55 percent/consecutive games: 62.1 (36-58) vs. DePaul, 12/9/15; 55.0 (33-60) at TCU, 12/12/15; 59.0 (36-61) at Saint Joseph's (Pa.), 12/21/15
ND shot 60 percent/game: 64.0 (48-75) vs. Valparaiso, 12/4/16
ND shot 65 percent/game: see 70 percent/game
ND shot 70 percent/game: 70.2 (40-57) at Mercer, 12/30/11
ND shot below 25 percent/game: 24.5 (13-53) at West Virginia, 1/13/08
ND shot below 30 percent/game: 29.7 (22-74) vs. Connecticut, 4/7/13 (@ New Orleans, La.)
ND shot below 35 percent/game: 33.3 (21-63) vs. Connecticut, 4/7/15 (@ Tampa, Fla.)
ND shot below 35 percent/game and won: 34.8 (23-66) vs. South Florida, 3/10/13 (@ Hartford, Conn.)
ND shot 55 percent/half: 58.1 (18-31), 1st half at Chattanooga, 12/27/16
ND shot 60 percent/half: see 70 percent/half
ND shot 65 percent/half: 68.2 (15-22), 2nd half at Toledo, 12/18/16
ND shot 70 percent/half: 71.4 (30-42), 1st half vs. Valparaiso, 12/4/16
ND shot 55 percent/both halves: 59.4 (19-32) and 55.6 (20-36), vs. UL-Lafayette, 11/22/16
ND shot below 25 percent/half: 24.0 (6-25), 1st half at Miami, 1/8/15
ND shot below 30 percent/half: 29.1 (7-24), 2nd half at Georgia Tech, 1/2/17

THREE-POINT SHOOTING

Player made 4 three-pointers/half: Madison Cable (1st half) vs. Syracuse, 3/6/16 (@ Greensboro, N.C.)
Player made 5 three-pointers/half: Michaela Mabrey (1st half) at Boston College, 2/8/15
Player made 5 three-pointers: Arike Ogunbowale vs. TCU 11/26/16
Player made 6 three-pointers: Michaela Mabrey vs. Syracuse, 1/21/16
Player made 7 three-pointers: Alicia Ratay at Providence, 2/16/03
Player made 8 three-pointers: Sheila McMillen vs. St. John's, 2/28/98 (@ Piscataway, N.J.)
Player attempted 10 three-pointers: Michaela Mabrey (10) vs. Syracuse, 1/21/16
ND made 10 three-pointers: 10 vs. Valparaiso, 12/4/16
ND did not make a three-pointer: vs. Saint Joseph's (Pa.), 12/21/14
ND attempted 20 three-pointers: 22 vs. Valparaiso, 12/4/16
ND shot 60 percent 3FG (min. 5 att.): 66.7 (4-6) vs. Stanford, 3/25/16 (@ Lexington, Ky.)

FREE-THROW SHOOTING

Player made 10 free-throws: Jewell Loyd (10) at Georgia Tech, 2/19/15
Player made 15 free-throws: Jewell Loyd (15) at DePaul, 12/10/14
Player attempted 15 free-throws: Brianna Turner (16) at North Carolina, 1/15/15
Player made 10 for 10 or better: 12-12 by Natalie Novosel vs. South Florida, 2/25/12
ND shot 90 percent (min. 10 att.): 92.3 (12-13) vs. Stanford, 3/25/16 (@ Lexington, Ky.)
ND shot below 50 percent (min. 10 att.): 36.4 (4-11) at NC State, 12/29/16
ND made 30 free-throws: 31 (attempted 46) vs. UCLA, 11/28/15 (@ Freeport, Bahamas)
ND made fewer than five FTs: 4 (attempted 1) at NC State, 12/29/16
ND attempted 40 free-throws: 46 (made 31) vs. UCLA, 11/28/15 (@ Freeport, Bahamas)
ND attempted fewer than five FTs: 2 (made 2) at Connecticut, 3/8/10

REBOUNDS

Player had 15 rebounds: Brianna Turner (18) at North Carolina, 1/15/15
Player had 20 rebounds: Natalie Achonwa (20) vs. South Florida, 3/10/13 (@ Hartford, Conn.)
Two players had double-figure rebounds: Taya Reimer (11) and Brianna Turner (10) vs. Connecticut, 4/7/15 (@ Tampa, Fla.)
Three players had double-figure rebounds: Jewell Loyd (12), Madison Cable (11) and Taya Reimer (11) at DePaul, 12/10/14
ND had 50 rebounds: 60 vs. UL-Lafayette, 11/22/16
ND had 20 offensive rebounds: 20 vs. TCU 11/26/16
ND had 25 offensive rebounds: 28 vs. Connecticut, 4/7/13 (@ New Orleans, La.)
ND had 30 offensive rebounds: 30 vs. Longwood, 12/28/11

DOUBLE-DOUBLES

Points & rebounds: Kathryn Westbeld (12/11) at Michigan State, 12/20/16
Points & rebounds/consecutive games: Brianna Turner (16/12) vs. UConn, 12/7/16; (14/11) at DePaul, 12/10/16
Points & rebounds/3 consecutive games: Natalie Achonwa (11/14) at Iowa, 3/26/13; (17/10) vs. Kansas, 3/31/13 (@ Norfolk, Va.); vs. Duke (17/13), 4/2/13 (@ Norfolk, Va.)
Points & rebounds/4 consecutive games: Jacqueline Batteast (14/11) vs. Virginia Tech, 1/10/04; (23/11) vs. Connecticut, 1/13/04; (22/10) at West Virginia, 1/17/04; (12/10) at Syracuse, 1/21/04
Points & rebounds/5 consecutive games: Jacqueline Batteast (20/10) vs. Western Michigan, 12/12/01; (11/12) vs. Marquette, 12/22/01; (23/10) at Rice, 12/28/01; (25/14) vs. DePaul, 12/31/01; (12/13) at Miami (Fla.), 1/2/02
Points & assists: Marina Mabrey (18/10) at Valparaiso, 11/23/15
Points & assists/consecutive games: Niele Ivey (12/10) at Valparaiso, 11/17/00; (14/11) vs. Arizona, 11/20/00
Two players had double-doubles: Brianna Turner (14p/11r) and Taya Reimer (14p/10r) vs. DePaul, 3/22/15
Three players had double-doubles: Jewell Loyd (41p/12r), Madison Cable (20p/11r) and Taya Reimer (15p/11r) at DePaul, 12/10/14
15 points and 15 rebounds: Brianna Turner (29/18) at North Carolina, 1/15/15
20 points and 10 rebounds: Madison Cable (21/10) vs. DePaul, 12/9/15
20 points and 20 rebounds: Natalie Achonwa (20/20) vs. South Florida, 3/10/13 (@ Hartford, Conn.)

TRIPLE-DOUBLES (only six in school history)

Lindsay Allen (11p/11r/12a) at Chattanooga, 12/27/16
 Marina Mabrey (18p/10a/12s) at Valparaiso, 11/23/15
 Skylar Diggins (17p/10r/10a) at DePaul, 2/24/13
 Skylar Diggins (22p/10r/11a) vs. Maryland, 3/27/12 (@ Raleigh, N.C.)
 Sara Liebscher (17p/12r/10a) vs. Detroit, 2/15/90
 Mary Gavin (11p/14a/10s) vs. Marquette, 1/31/87

ASSISTS

Player had 10 assists: Lindsay Allen (12) at Chattanooga, 12/27/16
Player had 10 assists/consecutive games: Megan Duffy (11 vs. Rutgers, 1/23/05; 10 vs. St. John's, 1/26/05)
Player had 15 assists: Mary Gavin (17) at Marquette, 2/28/87
ND had 30 assists: 30 vs. Central Michigan, 12/22/13
ND had fewer than 10 assists: 9 vs. Florida State, 1/2/15
ND had fewer than 5 assists: 3 vs. Villanova, 3/8/09 (@ Hartford, Conn.)

BLOCKED SHOTS

Player blocked 5 shots: see 6 blocks
Player blocked 6 shots: Brianna Turner (6) at Georgia Tech, 1/2/17
Player blocked 10 shots: Amanda Barksdale (11) vs. Boston College, 2/10/02
ND blocked 10 shots: 10 vs. Syracuse, 1/21/16
ND blocked 15 shots: 16 vs. Boston College, 2/10/02
ND blocked 0 shots: vs. Duke, 2/23/14

STEALS

Player had 5 steals: Jackie Young (6) vs. Valparaiso, 12/4/16
Player had 10 steals: Marina Mabrey (12) at Valparaiso, 11/23/15
ND had 20 steals: 21 vs. Saint Francis (Pa.), 12/31/12

TURNOVERS

ND committed 25 or more: 28 vs. Georgetown, 1/15/13
ND committed 25 or more and won: see 25 or more
ND committed 30 or more: 30 at West Virginia, 2/22/11
ND committed 10 or fewer: 10 at Michigan State, 12/20/16
ND committed 10 or fewer/consecutive games: 7 at Saint Joseph's (Pa.), 12/21/14; 7 vs. Oregon State, 12/28/15
ND committed 5 or fewer: 5 at Duke, 2/1/16

MISCELLANEOUS

Led ND in points/rebounds/assists: Jewell Loyd (27p/8r/6a) vs. Maryland, 12/3/14 (@ Fort Wayne, Ind.)
Hit "final minute" game-winning shot: Kathryn Westbeld (FT/0:26.2, 2nd) vs. Ohio State, 12/2/15
Four-point play: Madison Cable (9:52, 2nd half) vs. Wake Forest, 2/1/15
Made shot from midcourt or beyond: Lindsay Allen (50 feet at 0:00, 1st half) vs. Florida State, 1/2/15
Played every minute: Lindsay Allen (40) at NC State, 12/29/16
Played more than 40 minutes: Jewell Loyd (42) and Michaela Mabrey (41) at DePaul, 12/10/14
ND rallied from 10-point deficit to win: trailed at North Carolina, 23-34 (5:28 - 1st); won 89-79, 1/15/15
ND rallied from 15-point deficit to win: trailed vs. Syracuse, 7-22 (12:45 - 1st); won 79-68, 2/26/13
ND scored 20 straight points: see 25 straight points
ND scored 25 straight points: 26-0 run vs. Valparaiso, 12/4/16
ND scored 30 straight points: 36-0 run vs. Southeast Missouri State, 1/2/11

OVERTIME

ND played an OT game: vs. UCLA (W, 92-84, ot), 11/28/15 (@ Freeport, Bahamas)
ND played multiple overtimes: vs. Connecticut (W, 96-87, 3ot), 3/4/13
ND won an OT game: see played an OT game
ND won an OT game at home: vs. Connecticut (W, 96-87, 3ot), 3/4/13
ND won an OT game on the road: at DePaul (W, 94-93, ot), 12/10/14
ND lost an OT game: vs. UCLA (L, 86-83, 2ot), 11/18/10

RANKINGS

Played the No. 1 team in the AP poll: lost vs. Connecticut (72-61), 12/7/16
Played the No. 1 team in the WBCA/USA Today poll: lost at Connecticut (91-81), 12/5/15
Defeated top-10 opponent: at #12/9 Florida State (73-66), 2/22/16
Defeated top-10 opponent at home: vs. #10/9 Oregon State (62-61), 12/28/15
Defeated top-10 opponent on the road: see defeated top-10 opponent
Defeated top-10 opponent by double digits: vs. #7/6 Florida State (71-58), 3/8/15 (@ Greensboro, N.C.)

The Last Time An Opponent...

SCORING

Player scored 25 points: Erica McCall (27) vs. Stanford, 3/25/16 (@ Lexington, Ky.)
Player scored 30 points: Adrienne Motley (32) at Miami, 1/8/15
Player scored 35 points: Heather Butler (37), UT Martin, 3/24/13 (@ Iowa City, Iowa)
Two players scored 20 points: Erica McCall (27) and Karlie Samuelson (20) vs. Stanford, 3/25/16 (@ Lexington, Ky.)
Three players scored 20 points: Angela Simpson (37), Bridgette Williams (24) and Stephanie Shaw (22), Northwestern State, 3/24/95 (@ Amarillo, Texas)
Two players scored 25 points: Brittney Griner (32) and Odyssey Sims (25) at Baylor, 11/20/11
None in double figures: at Georgia Tech, 1/2/17 (Zaire O'Neil had nine points)
One in double figures: AJ Alix (16), vs. TCU, 11/26/16
Five in double figures: Erica McCall (27), Karlie Samuelson (20), Kaylee Johnson (17), Lili Thompson (11) and Marta Sniezek (11) vs. Stanford, 3/25/16 (@ Lexington, Ky.)
Six in double figures: Jannon Roland (21), Danielle McCulley (14), Jennifer Jacoby (12), Stacey Lovelace (12), Nicole Erickson (11) and Shannon Lindsey (11), Purdue, 11/30/94
Scored 50 points/half: 50 (1st half), vs. Stanford, 3/25/16 (@ Lexington, Ky.)
Scored 55 points/half: see 60 points/half
Scored 60 points/half: 63 (2nd half), Northwestern State, 3/24/95 (@ Amarillo, Texas)
Scored 100 points/game: 106, Connecticut, 12/8/98
Scored 100 points/non-conference game: 103, Northwestern State, 3/24/95 (@ Amarillo, Texas)
Scored fewer than 15 points/half: 11 (1st half), Virginia Tech, 1/24/16
Scored fewer than 20 points/half: 17 (1st half), at Georgia Tech, 1/2/17
Scored fewer than 40 points/game: 38, at Georgia Tech, 1/2/17

FIELD-GOAL SHOOTING

Shot 50 percent/game: see 55 percent/game
Shot 55 percent/game: 55.9 (33-59), vs. Stanford, 3/25/16 (@ Lexington, Ky.)
Shot 60 percent/game: 60.0 (30-50), DePaul, 1/22/08
Shot below 20 percent/game: 18.6 (11-59), Holy Cross, 11/23/14
Shot below 25 percent/game: 24.1 (14-58), at Georgia Tech, 1/2/17
Shot below 30 percent/game: See 30 percent/game
Shot 50 percent/half: 55.2 (12-23), 2nd half vs. UConn, 12/7/16
Shot 55 percent/half: 56.0 (14-25), 1st half at Iowa, 11/30/16
Shot 60 percent/half: 64.5 (20-31), 1st half vs. Stanford, 3/25/16 (@ Lexington, Ky.)
Shot 65 percent/half: 68.2 (15-22), 2nd half by Texas A&M, 4/5/11 (@ Indianapolis, Ind.)
Shot 70 percent/half: 70.0 (14-20), 2nd half by New Hampshire, 11/12/10
Shot 50 percent/both halves: 51.4 (19-37) and 53.8 (14-26) at Connecticut, 12/5/15
Shot below 20 percent/half: 16.0 (4-25), 1st half by Virginia Tech, 1/24/16
Shot below 25 percent/half: 21.9 (7-32) 1st half at Georgia Tech, 1/2/17
Shot below 30 percent/half: 26.9 (7-26) 2nd half at Georgia Tech, 1/2/17
Shot below 30 percent/both halves: 21.9 (7-32) and 26.9 (7-26) at Georgia Tech, 1/2/17

THREE-POINT SHOOTING

Player made 5 three-pointers: Jay-Ann Bravo-Harriott, at Toledo, 12/18/16
Player made 6 three-pointers: Heather Butler, UT Martin, 3/24/13 (@ Iowa City, Iowa)
Player made 7 three-pointers: Angie Bjorklund, Tennessee, 1/5/08
Player attempted 10 three-pointers: Chelsey Shumpert (10), at Chattanooga 12/27/16
Made 10 three-pointers: 12, vs. Green Bay, 11/17/16
Did not make a three-pointer: Duke, 2/16/15
Shot 50 percent 3FG (min. 5 att.): 54.5 (6-11), vs. TCU 11/26/16
Shot 60 percent 3FG (min. 5 att.): 60.0 (6-10), Tennessee, 1/19/15

FREE-THROW SHOOTING

Player made 10 free-throws: Brianna Kiesel (10), Pittsburgh, 2/26/15
Player made 15 free-throws: Nok Duany (15) at Georgetown, 2/23/02
Player attempted 15 free-throws: Brittany Hrynko (16) at DePaul, 12/10/14
Player made 10 for 10 or better: Allisha Gray (10-10) at North Carolina, 1/15/15
Shot 90 percent (min. 10 att.): 93.3 (14-15), at NC State, 12/29/16
Shot below 50 percent (min. 10 att.): 45.0 (9-12) at Georgia Tech, 1/2/17
Made 30 free-throws: 32 (attempted 37), Illinois, 11/24/98
Made fewer than five FTs: 3 (attempted 10) at Chattanooga, 12/27/16
Attempted 40 free-throws: 45 (made 28), at South Florida, 1/13/07
Attempted fewer than five FTs: 1 (made 1) vs. Valparaiso, 12/4/16

REBOUNDS

Player had 15 rebounds: Jessica Lindstrom (16), vs. Green Bay, 11/17/16
Player had 20 rebounds: Wendy Scholtens (20) at Vanderbilt, 1/8/89
Two players had double-figure rebounds: Oderah Chidom (11) and Azurá Stevens (10) vs. Duke, 3/4/16 (@ Greensboro, N.C.)
Three players had double-figure rebounds: Aurora Adams (16), Brenda McCunn (11) and Paula Langseth (10), Hawaii, 3/22/81 (@ Anchorage, Alaska)
Had 50 rebounds: 55, Syracuse, 1/21/16
Out-rebounded ND by 10 or more: 13, at Toledo, 12/18/16 (UT 40, ND 27)

DOUBLE-DOUBLES

Points & rebounds: Jennifer Mathurin (11/10) at NC State, 12/29/16
Points & assists: Chanise Jenkins (12/10) at DePaul, 12/10/14
Points & steals: Alexis Jones (16/10) at Duke, 2/2/14
Two players had double-doubles: Nina Davis (26/13) and Sune Agbuke (12/10), Baylor, 3/29/15 (@ Oklahoma City, Okla.)
Three players had double-doubles: Mary Raese (24p/10r), Mary Westerwelle (11p/10r) and Ne-tra McGrew (10p/10a), Idaho, 3/21/86 (@ Amarillo, Texas)
15 points and 15 rebounds: See 15/15
20 points and 10 rebounds: Jessica Lindstrom (20/16) vs. Green Bay, 11/17/16
20 points and 20 rebounds: Wendy Scholtens (29/20) at Vanderbilt, 1/8/89

TRIPLE-DOUBLES

Points, rebounds, assists: Liad Suez-Karni (14p/10r/10a), Villanova, 2/7/06
Points, rebounds, steals: Diana Vines (23p/11r/12s) at DePaul, 1/24/89

ASSISTS

Player had 10 assists: Aysia Bugg (10) at Pittsburgh, 1/3/16
Player had 15 assists: Veronica Pettry (16) at Loyola-Chicago, 2/18/89
Had 25 assists: 25, Connecticut, 4/8/14 (@ Nashville, Tenn.)
Had 30 assists: 30 at Loyola-Chicago, 2/18/89
Had fewer than 10 assists: see 5 or fewer
Had 5 or fewer assists: 5, at Georgia Tech, 1/2/17

BLOCKED SHOTS

Player blocked 5 shots: Jassany Williams (9) at Miami, 1/8/15
Blocked 10 shots: 10 at Miami, 1/8/15
Blocked 15 shots: 16 at Connecticut, 1/27/07
Blocked 0 shots: vs. Valparaiso, 12/4/16

STEALS

Player had 5 steals: Gabby Williams, vs. UConn, 12/7/16
Player had 6 steals: see player had seven steals
Player had 7 steals: Kala Green, North Carolina A&T, 3/19/16
Player had 10 steals: Alexis Jones at Duke, 2/2/14
Had 15 steals: 16 at Duke, 2/2/14
Had 20 steals: 24, Georgetown, 1/29/00

TURNOVERS

Player committed 10 turnovers: Samantha Logic (11) at Iowa, 3/26/13
Committed 20 turnovers or more and won: 24, Connecticut, 12/6/14
Committed 25 turnovers or more: see 30 turnovers
Committed 30 turnovers or more: 31 vs. Valparaiso, 12/4/16
Committed 35 turnovers or more: 35, Connecticut, 3/4/13
Committed 40 turnovers or more: 46, Akron, 11/11/11
Committed 5 turnovers or fewer: 5 at Villanova, 1/25/03
Committed 10 turnovers or fewer: 10, at Chattanooga, 12/27/16

MISCELLANEOUS

Led team in points/rebounds/assists: G'mrice Davis (9p/15r/3a), vs. Fordham, 11/14/16
Four-point play: Tori Jankoska (2:44, 1st quarter) at Michigan State, 12/20/16
Hit "final minute" game-winning shot: Brooke Hampton (2 FT/0:04.6), West Virginia, 2/12/12
Played every minute: Gabby Williams (40), Kia Nurse (40) and Katie Lou Samuelson (40) vs. UConn, 12/7/16
Played more than 40 minutes: Monique Billings (42) and Nirra Fields (41), UCLA, 11/28/15 (@ Freeport, Bahamas)
Rallied from 10-point deficit to win: Connecticut, 12/6/14 (ND led 28-18 with 10:13 left in 1st half, UCONN won 76-58)
Led ND by 10 or more at halftime: 11, vs. Stanford, 3/25/16 (@ Lexington, Ky.)
Led ND by 15 or more at halftime: 20 at Miami (40-20), 1/8/15
Led ND by 25 or more points: 25 by Baylor (75-50 at 4:56 of 2nd half), 4/3/12 (@ Denver, Colo.)

Scoring Margins - The Last Time...

ND won by 30-plus points: see 60 points
ND won by 30-plus points at home: see 60 points
ND won by 30-plus points on the road: 34 — ND 86, at Wake Forest 52, 2/18/15
ND won by 30-plus points at a neutral site: 40 — ND 91, UL-Lafayette 51, 11/22/16 (@ Houston, Texas)
ND won by 40-plus points: see 60 points
ND won by 50-plus points: see 60 points
ND won by 60-plus points: 60 — at ND 114, Valparaiso 54, 12/4/16
ND won by 70-plus points: 75 — at ND 104, Holy Cross 29, 11/23/14

ND lost by 10-19 points: 11 — Connecticut 72, at ND 61, 12/7/16
ND lost by 10-19 at home: 11 — Connecticut 72, at ND 61, 12/7/16
ND lost by 10-19 points on the road: 10 — at Connecticut 91, ND 81, 12/5/15
ND lost by 10-19 points at a neutral site: 10 — Connecticut 63, ND 53, 4/7/15 (@ Tampa, Fla.)
ND lost by 20-29 points: 21 — Connecticut 79, ND 58, 4/8/14 (@ Nashville, Tenn.)
ND lost by 20-29 points at home: 25 — Connecticut 76, at ND 51, 3/1/10
ND lost by 20-29 points on the road: 21 — at Connecticut 78, ND 57, 2/19/11
ND lost by 30-plus points: 39 — at Tennessee 89, ND 50, 3/17/02

2016-17 Notre Dame Women's Basketball Game Notes

Game 1: #1/2 Notre Dame 107, Central Mich. 47

Nov. 11, 2016 · Purcell Pavilion at the Joyce Center

Central Michigan 47 • 0-1

Table with columns: Player, FG-FGA, 3-Ptr, FT-FTA, Rebounds, PF, TP, A TO Blk, Stl, Min. Lists stats for 23 players and team totals.

Summary statistics for Central Michigan game, including 1st-4th quarter FG%, 3FG%, FT%, and game totals.

Notre Dame 107 • 1-0

Table with columns: Player, FG-FGA, 3-Ptr, FT-FTA, Rebounds, PF, TP, A TO Blk, Stl, Min. Lists stats for 17 players and team totals.

Summary statistics for Notre Dame game, including 1st-4th quarter FG%, 3FG%, FT%, and game totals.

Officials: Mark Berger, Erika Herriman-Camarota, Thurman leggs Jr. Technical fouls: Central Michigan-None. Notre Dame-None.

Score by periods table for Central Michigan vs Notre Dame game.

Last FG - CMU 4th-04:03, ND 4th-00:28. Largest lead - CMU None, ND by 60 4th-00:28.

Game 2: #1/2 Notre Dame 67, Fordham 36

Nov. 14, 2016 · Purcell Pavilion at the Joyce Center

Fordham 36 • 1-1

Table with columns: Player, FG-FGA, 3-Ptr, FT-FTA, Rebounds, PF, TP, A TO Blk, Stl, Min. Lists stats for 15 players and team totals.

Summary statistics for Fordham game, including 1st-4th quarter FG%, 3FG%, FT%, and game totals.

Notre Dame 67 • 2-0

Table with columns: Player, FG-FGA, 3-Ptr, FT-FTA, Rebounds, PF, TP, A TO Blk, Stl, Min. Lists stats for 17 players and team totals.

Summary statistics for Notre Dame game, including 1st-4th quarter FG%, 3FG%, FT%, and game totals.

Officials: Puulani Spurlock, Bob Enterline, Kevin Dillard Technical fouls: Fordham-None. Notre Dame-None.

Score by periods table for Fordham vs Notre Dame game.

Last FG - FOR 4th-04:49, ND 4th-03:25. Largest lead - FOR None, ND by 31 4th-01:09.

Game 3: #1 Notre Dame 71, Green Bay 67

Nov. 17, 2016 · Purcell Pavilion at the Joyce Center

Green Bay 67 • 2-1

Table with columns: Player, FG-FGA, 3-Ptr, FT-FTA, Rebounds, PF, TP, A TO Blk, Stl, Min. Lists stats for 11 players and team totals.

Summary statistics for Green Bay game, including 1st-4th quarter FG%, 3FG%, FT%, and game totals.

Notre Dame 71 • 3-0

Table with columns: Player, FG-FGA, 3-Ptr, FT-FTA, Rebounds, PF, TP, A TO Blk, Stl, Min. Lists stats for 14 players and team totals.

Summary statistics for Notre Dame game, including 1st-4th quarter FG%, 3FG%, FT%, and game totals.

Officials: Tom Hallead, Maggie Tieman, Mark Berger Technical fouls: Green Bay-None. Notre Dame-None.

Score by periods table for Green Bay vs Notre Dame game.

Last FG - GB 4th-00:03, ND 4th-02:32. Largest lead - GB None, ND by 17 3rd-05:56.

Game 4: #1 Notre Dame 71, #17 Washington 60

Nov. 20, 2016 · Purcell Pavilion at the Joyce Center

Washington 60 • 3-1

Table with columns: Player, FG-FGA, 3-Ptr, FT-FTA, Rebounds, PF, TP, A TO Blk, Stl, Min. Lists stats for 15 players and team totals.

Summary statistics for Washington game, including 1st-4th quarter FG%, 3FG%, FT%, and game totals.

Notre Dame 71 • 4-0

Table with columns: Player, FG-FGA, 3-Ptr, FT-FTA, Rebounds, PF, TP, A TO Blk, Stl, Min. Lists stats for 14 players and team totals.

Summary statistics for Notre Dame game, including 1st-4th quarter FG%, 3FG%, FT%, and game totals.

Officials: Cameron Inouye, Billy Smith, Karen Preato Technical fouls: Washington-None. Notre Dame-None.

Score by periods table for Washington vs Notre Dame game.

Last FG - WASH 4th-00:15, ND 4th-01:45. Largest lead - WASH None, ND by 20 2nd-07:08.

2016-17 Notre Dame Women's Basketball Game Notes

Game 5: #1 Notre Dame 91, UL-Lafayette 51

Nov. 22, 2016 · Campbell Center & Tudor Fieldhouse · Houston, Texas

UL-Lafayette 51 • 1-1

Statistical table for Game 5, UL-Lafayette players including Total FG-FGA, 3-Ptr FG-FGA, FT-FTA, Rebounds, PF, TP, A, TO, Blk, Stl, Min.

Summary statistics for Game 5: 1st-3rd FG%, 3FG%, FT%, Game FG%, Deadball Rebounds.

Notre Dame 91 • 5-0

Statistical table for Game 5, Notre Dame players including Total FG-FGA, 3-Ptr FG-FGA, FT-FTA, Rebounds, PF, TP, A, TO, Blk, Stl, Min.

Summary statistics for Game 5: 1st-3rd FG%, 3FG%, FT%, Game FG%, Deadball Rebounds.

Officials: Bruce Morris, Jules Gallien, Erika Herriman-Camarota. Technical fouls: UL-Lafayette-None. Notre Dame-None. Attendance: 767. Neutral site Homecoming game for Brianna Turner (Pearland, Texas/Manvel HS). Game moved from Campbell Center to Tudor Fieldhouse due to power outage 2:28 delay.

Score by periods table for Game 5 showing 1st, 2nd, 3rd, 4th quarters and Total score.

Game 6: #1 Notre Dame 92, TCU 59

Nov. 26, 2016 · Purcell Pavilion at the Joyce Center

TCU 59 • 4-1

Statistical table for Game 6, TCU players including Total FG-FGA, 3-Ptr FG-FGA, FT-FTA, Rebounds, PF, TP, A, TO, Blk, Stl, Min.

Summary statistics for Game 6: 1st-3rd FG%, 3FG%, FT%, Game FG%, Deadball Rebounds.

Notre Dame 92 • 6-0

Statistical table for Game 6, Notre Dame players including Total FG-FGA, 3-Ptr FG-FGA, FT-FTA, Rebounds, PF, TP, A, TO, Blk, Stl, Min.

Summary statistics for Game 6: 1st-3rd FG%, 3FG%, FT%, Game FG%, Deadball Rebounds.

Officials: Bryan Entlerne, Eric Brewton, Angel Stanton. Technical fouls: TCU-None. Notre Dame-None. Attendance: 8174.

Score by periods table for Game 6 showing 1st, 2nd, 3rd, 4th quarters and Total score.

Points in the paint, off the bench, 2nd chance, fast break, and bench points for Game 6.

Last FG - TCU 4th-03:10, ND 4th-01:58. Largest lead - TCU by 2 1st-08:08, ND by 33 4th-01:58. TCU led for 00:11, ND led for 37:50. Game was tied for 01:54.

Score tied - 3 times. Lead changed - 2 times.

Game 7: #1 Notre Dame 73, Iowa 58

Nov. 30, 2016 · Carver-Hawkeye Arena · Iowa City, Iowa

Notre Dame 73 • 7-0

Statistical table for Game 7, Notre Dame players including Total FG-FGA, 3-Ptr FG-FGA, FT-FTA, Rebounds, PF, TP, A, TO, Blk, Stl, Min.

Summary statistics for Game 7: 1st-3rd FG%, 3FG%, FT%, Game FG%, Deadball Rebounds.

Iowa 58 • 5-3

Statistical table for Game 7, Iowa players including Total FG-FGA, 3-Ptr FG-FGA, FT-FTA, Rebounds, PF, TP, A, TO, Blk, Stl, Min.

Summary statistics for Game 7: 1st-3rd FG%, 3FG%, FT%, Game FG%, Deadball Rebounds.

Officials: Sue Blauch, Felicia Grinter, Gina Cross. Technical fouls: Notre Dame-None, Iowa-None. Attendance: 3809. 2016 ACC/Big Ten Challenge.

Score by periods table for Game 7 showing 1st, 2nd, 3rd, 4th quarters and Total score.

Game 8: #1 Notre Dame 114, Valparaiso 54

Dec. 4, 2016 · Purcell Pavilion at the Joyce Center

Valparaiso 54 • 4-4

Statistical table for Game 8, Valparaiso players including Total FG-FGA, 3-Ptr FG-FGA, FT-FTA, Rebounds, PF, TP, A, TO, Blk, Stl, Min.

Summary statistics for Game 8: 1st-3rd FG%, 3FG%, FT%, Game FG%, Deadball Rebounds.

Notre Dame 114 • 8-0

Statistical table for Game 8, Notre Dame players including Total FG-FGA, 3-Ptr FG-FGA, FT-FTA, Rebounds, PF, TP, A, TO, Blk, Stl, Min.

Summary statistics for Game 8: 1st-3rd FG%, 3FG%, FT%, Game FG%, Deadball Rebounds.

Officials: Luis Gonzalez, Norma Jones, Jeffrey Smith. Technical fouls: Valparaiso-None, Notre Dame-None. Attendance: 8132.

Score by periods table for Game 8 showing 1st, 2nd, 3rd, 4th quarters and Total score.

Points in the paint, off the bench, 2nd chance, fast break, and bench points for Game 8.

Last FG - VALPOWBB 4th-00:52, ND 4th-00:37. Largest lead - VALPOWBB None, ND by 62 4th-01:53. VALPOWBB led for 00:00, ND led for 38:19. Game was tied for 01:41.

Score tied - 0 times. Lead changed - 0 times.

2016-17 Notre Dame Women's Basketball Game Notes

Game 9: #1 UConn, 72, #2 Notre Dame 61

Dec. 7, 2016 · Purcell Pavilion at the Joyce Center

UConn 72 • 8-0

##	Player	Total			3-Ptr			Rebounds			PF	TP	A	TO	Blk	Stl	Min
		FG	FGA	FT	FTA	FG	FGA	FT	FTA	Off							
14	Gabby WILLIAMS	f	7-17	0-1	5-6	4	8	12	1	19	6	2	2	5		40	
24	Napheesa COLLIER	f	7-9	0-0	6-6	1	4	5	3	20	0	1	0	1		29	
11	Kia NURSE	g	2-6	0-2	4-4	0	0	0	2	8	4	1	0	1		40	
12	Saniya CHONG	g	1-3	0-1	1-1	3	0	3	1	3	2	0	0	0		19	
33	Katie Lou SAMUELSON	g	7-16	1-4	3-3	0	3	3	3	18	2	2	1	0		40	
05	Crystal DANGERFIELD	g	2-4	0-1	0-0	0	2	2	3	4	2	5	0	1		24	
51	Natalie BUTLER	Team	0-1	0-0	0-0	1	3	4	2	0	2	3	0	0		8	
	Totals		26-56	1-9	19-20	11	24	35	15	72	18	16	2	9		200	

1st - FG %:	9-15	60.0%	2nd - FG %:	5-18	27.8%	3rd - FG %:	7-13	53.8%	4th - FG %:	5-10	50.0%	Game:	26-56	46.4%	Deadball	
3FG %:	1-2	50.0%	0-4	0.0%	0-3	0.0%	0-0	0.0%	1-9	11.1%					Rebounds	1
FT %:	4-4	100.0%	1-1	100.0%	2-2	100.0%	12-13	92.3%	19-20	95.0%						

Notre Dame 61 • 8-1

##	Player	Total			3-Ptr			Rebounds			PF	TP	A	TO	Blk	Stl	Min
		FG	FGA	FT	FTA	FG	FGA	FT	FTA	Off							
11	Brianna Turner	f	7-14	0-0	2-2	8	4	12	2	16	3	0	2	1		36	
33	Kathryn Westbeld	f	4-7	0-1	0-0	2	1	3	3	8	0	7	0	2		23	
03	Marina Mabrey	g	1-8	0-4	0-0	1	1	2	3	2	1	1	0	0		18	
15	Lindsay Allen	g	5-8	0-1	1-4	0	5	5	3	11	8	1	0	1		40	
24	Arike Ogunbowale	g	4-14	0-4	1-2	1	1	2	3	9	1	2	0	1		32	
05	Jackie Young	g	3-4	1-1	0-0	1	3	4	4	7	0	2	1	4		30	
14	Mychal Johnson	g	1-3	1-2	0-0	0	1	1	0	3	0	1	0	1		12	
21	Kristina Nelson	g	1-3	0-0	0-0	0	2	2	1	2	1	1	0	0		7	
22	Erin Boley	Team	1-2	1-1	0-0	0	0	0	0	3	0	0	0	0		2	
	Totals		27-63	3-14	4-8	13	19	32	19	61	14	15	3	10		200	

1st - FG %:	7-15	46.7%	2nd - FG %:	8-18	44.4%	3rd - FG %:	4-12	33.3%	4th - FG %:	8-18	44.4%	Game:	27-63	42.9%	Deadball	
3FG %:	0-4	0.0%	2-3	66.7%	0-1	0.0%	1-6	16.7%	3-14	21.4%					Rebounds	3
FT %:	0-0	0.0%	2-2	100.0%	1-2	50.0%	1-4	25.0%	4-8	50.0%						

Officials: Dee Kantner, Bryan Brunette, Karen Preato

Technical fouls: UConn-None. Notre Dame-None.

Attendance: 9149

Score by periods	1st	2nd	3rd	4th	Total
UConn	23	11	16	22	72
Notre Dame	14	20	9	18	61

Points	In	Off	2nd	Fast	Bench
UConn	42	20	15	10	4
ND	30	16	14	6	15

Last FG - UConn 4th-03:06, ND 4th-00:11.
Largest lead - UConn by 16 4th-00:51, ND by 4 2nd-02:24.
UConn led for 35:03, ND led for 02:46, Game was tied for 02:11.

Score tied - 2 times.
Lead changed - 3 times.

Game 10: #2 Notre Dame 75, #16 DePaul 61

Dec. 10, 2016 · McGrath-Phillips Arena · Chicago, Illinois

Notre Dame 75 • 9-1

##	Player	Total			3-Ptr			Rebounds			PF	TP	A	TO	Blk	Stl	Min
		FG	FGA	FT	FTA	FG	FGA	FT	FTA	Off							
11	Brianna Turner	f	4-8	0-0	6-7	3	8	11	2	14	2	4	2	0		26	
33	Kathryn Westbeld	f	2-3	0-0	0-0	2	5	7	2	4	2	2	0	0		17	
03	Marina Mabrey	g	1-6	0-1	5-6	3	3	6	2	7	4	2	0	2		29	
15	Lindsay Allen	g	6-11	0-0	2-3	1	8	9	3	14	3	2	0	1		40-	
24	Arike Ogunbowale	g	7-15	1-4	2-4	2	4	6	3	17	1	0	1	2		29	
14	Mychal Johnson	g	4-7	2-4	0-0	0	1	1	1	10	1	0	0	1		31	
21	Kristina Nelson	g	1-7	0-0	0-0	3	1	4	3	2	0	2	0	0		10	
22	Erin Boley	Team	2-4	1-3	2-2	1	1	2	2	7	0	2	0	0		18	
	Totals		27-61	4-12	17-22	16	32	48	18	75	13	15	3	6		200	

1st - FG %:	8-17	47.1%	2nd - FG %:	6-21	28.6%	3rd - FG %:	6-9	66.7%	4th - FG %:	7-14	50.0%	Game:	27-61	44.3%	Deadball	
3FG %:	1-5	20.0%	0-1	0.0%	1-2	50.0%	2-4	50.0%	4-12	33.3%					Rebounds	2
FT %:	2-2	100.0%	2-5	40.0%	6-7	85.7%	7-8	87.5%	17-22	77.3%						

DePaul 61 • 6-3

##	Player	Total			3-Ptr			Rebounds			PF	TP	A	TO	Blk	Stl	Min
		FG	FGA	FT	FTA	FG	FGA	FT	FTA	Off							
34	Grant, Jacqui	f	2-9	0-2	0-0	4	2	6	4	4	1	1	0	1		13	
01	Millender, Ashton	g	2-8	1-6	0-0	1	0	1	4	5	0	1	0	1		33	
10	Coleman, Amarah	g	2-3	0-1	2-2	0	2	2	1	6	1	1	1	0		20	
14	January, Jessica	g	8-23	0-4	3-8	2	4	6	4	19	6	4	1	0		37	
22	Schulte, Brooke	g	8-11	3-4	0-2	2	4	6	3	19	1	3	0	0		34	
05	Prochaska, Lauren	g	1-1	0-0	0-0	1	3	4	0	2	0	1	0	0		11	
20	Campbell, Kelly	g	1-6	1-3	3-4	0	1	1	4	6	1	0	0	2		29	
21	Stonewall, Chante	g	0-1	0-0	0-0	0	1	1	0	0	0	0	0	0		6	
24	Allen, Tanita	g	0-2	0-1	0-0	0	2	2	4	0	1	0	1	0		12	
33	McMahon, Claire	Team	0-2	0-2	0-0	0	0	0	1	0	1	0	0	0		5	
	Totals		24-66	5-23	8-16	14	21	35	25	61	12	11	3	4		200	

1st - FG %:	7-15	46.7%	2nd - FG %:	3-17	17.6%	3rd - FG %:	5-15	33.3%	4th - FG %:	9-19	47.4%	Game:	24-66	36.4%	Deadball	
3FG %:	0-3	0.0%	1-8	12.5%	3-6	50.0%	1-6	16.7%	5-23	21.7%					Rebounds	4
FT %:	1-4	25.0%	5-6	83.3%	3-6	50.0%	0-0	0.0%	8-16	50.0%						

Officials: Joseph Vaszily, Dennis DeMayo, Rachelle Jones

Technical fouls: Notre Dame-None. DePaul-None.

Attendance: 3001

Score by periods	1st	2nd	3rd	4th	Total
Notre Dame	19	14	19	23	75
DePaul	15	12	15	19	61

Game 11: #2 Notre Dame 85, Toledo 68

Dec. 18, 2016 · Savage Arena · Toledo, Ohio

Notre Dame 85 • 10-1

##	Player	Total			3-Ptr			Rebounds			PF	TP	A	TO	Blk	Stl	Min
		FG	FGA	FT	FTA	FG	FGA	FT	FTA	Off							
11	Turner, Brianna	f	11-13	0-0	4-7	2	6	8	1	26	2	3	2	1		30	
33	Westbeld, Kathryn	f	2-5	0-0	4-5	5	2	7	3	8	5	2	0	2		27	
03	Mabrey, Marina	g	8-12	2-3	1-1	1	5	6	4	19	3	5	2	1		30	
15	Allen, Lindsay	g	4-7	0-0	2-3	1	1	2	3	10	8	1	0	4		32	
24	Ogunbowale, Arike	g	2-11	0-4	2-4	0	1	1	3	6	2	3	0	3		26	
14	Johnson, Mychal	g	1-3	0-0	0-0	0	0	0	3	2	3	1	0	3		29	
20	Patberg, Ali	g	0-0	0-0	0-0	0	1	1	0	0	0	0	0	0		3	
21	Nelson, Kristina	g	0-2	0-0	2-4	0	0	0	0	2	1	1	0	1		9	
22	Boley, Erin	Team	4-7	3-5	1-1	0	1	1	1	12	1	1	0	1		14	
	Totals		32-60	5-12	16-25	10	17	27	18	85	25	17	4	16		200	

1st - FG %:	9-24	37.5%	2nd - FG %:	8-14	57.1%	3rd - FG %:	8-13	61.5%	4th - FG %:	7-9	77.8%	Game:	32-60	53.3%	Deadball	</
-------------	------	-------	-------------	------	-------	-------------	------	-------	-------------	-----	-------	-------	-------	-------	----------	----

2016-17 Notre Dame Women's Basketball Game Notes

Game 13: #2 Notre Dame 79, Chattanooga 58

Dec. 27, 2016 • McKenzie Arena • Chattanooga, Tennessee

##	Player	Total			3-Ptr		Rebounds			PF	TP	A	T	Blk	Stl	Min	
		FG	FGA	%	FG	FGA	Off	Def	Tot								
11	Brianna Turner	10	13		0-0	4-8	4	1	5	1	24	1	1	6	0	28	
33	Kathryn Westbeld	4	8		0-0	3-4	3	5	8	0	11	4	2	2	0	23	
03	Marina Mabrey	1-2	0-1	0-0	1	0	1	0	1	0	2	1	0	1	13		
15	Lindsay Allen	5-9	0-0	1-1	1	10	11	0	11	12	4	0	1	1	35		
24	Arike Ogunbowale	5-12	1-1	2-2	0	3	3	1	13	0	0	1	1	1	29		
05	Jackie Young	1-4	0-0	1-2	1	2	3	1	3	1	1	0	0	0	16		
14	Mychal Johnson	0-1	0-1	0-0	0	3	4	0	0	0	1	0	1	0	23		
20	Ali Patberg	0-0	0-0	0-0	0	1	1	0	0	0	0	0	0	0	3		
21	Kristina Nelson	4-5	0-0	0-0	1	2	3	5	8	0	1	0	0	0	12		
22	Erin Boley	2-3	0-1	3-3	1	5	6	0	7	0	2	0	0	0	16		
35	Diamond Thompson	0-0	0-0	0-0	0	0	0	1	0	0	0	0	0	0	2		
Team						2		2						2			
Totals		32-57		1-4		14-20		14		32		46		13		79	
1st FG %		11-18 61.1%		2nd: 7-13 53.8%		3rd: 9-14 64.3%		4th: 5-12 41.7%		Game: 32-57 56.1%		Deadball		Rebounds			
3FG %		0-1 0.0%		0-0 0.0%		0-1 0.0%		1-2 50.0%		1-4 25.0%		6-15		40.0%			
FT %		4-4 100.0%		4-8 50.0%		2-2 100.0%		4-6 66.7%		14-20 70.0%		4-11		36.4%			

##	Player	Total			3-Ptr		Rebounds			PF	TP	A	T	Blk	Stl	Min	
		FG	FGA	%	FG	FGA	Off	Def	Tot								
03	Jasmine Joyner	1-6	0-1	0-0	1	1	2	4	2	0	1	1	1	1	21		
10	Queen Alford	9-17	3-6	3-8	2	5	7	1	24	2	1	0	1	1	39		
20	Keiana Gilbert	0-4	0-0	0-0	1	1	2	0	0	2	1	0	1	20			
25	Cheley Shumpert	3-16	3-10	0-0	0	1	1	3	9	3	3	0	2	36			
33	Lakely Bouldin	4-8	3-5	0-0	0	1	1	0	11	0	0	0	0	35			
21	Sydney Vanlandingham	1-1	0-0	0-0	0	0	0	1	2	0	1	0	0	6			
22	Shelbie Davenport	1-2	0-1	0-0	0	1	1	2	2	0	1	0	0	4			
23	Moses Johnson	1-1	0-0	0-0	1	0	1	1	2	0	0	1	0	6			
24	Nakeia Burks	1-2	0-0	0-0	0	0	0	1	2	0	0	0	0	7			
30	Ansley Chilton	0-0	0-0	0-0	0	0	0	1	0	0	0	0	0	3			
35	Aryanna Gilbert	1-1	0-0	0-2	1	2	3	1	2	2	1	0	1	19			
41	Ashlyn Wert	1-2	0-0	0-0	1	0	1	0	2	0	0	0	0	4			
Team						3		2						2			
Totals		23-60		9-23		3-10		10		14		24		15		58	
1st FG %		5-19 26.3%		2nd: 7-14 50.0%		3rd: 7-16 43.8%		4th: 4-11 36.4%		Game: 23-60 38.3%		Deadball		Rebounds			
3FG %		2-7 28.6%		2-4 50.0%		3-8 37.5%		9-23 39.1%		3-8 37.5%		3-10		30.0%			
FT %		0-0 0.0%		1-2 50.0%		1-4 25.0%		1-4 25.0%		9-23 39.1%		3-10		30.0%			

Officials: Billy Smith, Dawn Marsh, Pualoni Spurlock
Technical fouls: Notre Dame-None, Chattanooga-None.
Attendance: 3388

Score by periods	1st	2nd	3rd	4th	Total	Points	In Paint	Off T/O	2nd Chance	Fast Break	Bench	Rebounds
Notre Dame	26	18	20	15	79	54	16	18	6	18	6	18
Chattanooga	12	17	17	12	58	22	20	12	0	12	0	12

Last FG - ND 4th-02:40, UTC 4th-04:25.
 Largest lead - ND by 21 3rd-06:23, UTC None.
 ND led for 39:33, UTC led for 00:00. Game was tied for 00:27.
 Score tied - 0 times.
 Lead changed - 0 times.

Game 14: NC State 70, #2 Notre Dame 62

Dec. 29, 2016 • Reynolds Coliseum • Raleigh, North Carolina

##	Player	Total			3-Ptr		Rebounds			PF	TP	A	T	Blk	Stl	Min	
		FG	FGA	%	FG	FGA	Off	Def	Tot								
03	Marina Mabrey	8-14	4-8	2-3	3	2	5	4	22	4	2	1	0	0	33		
11	Brianna Turner	3-8	0-0	1-4	0	3	3	5	7	2	2	1	0	0	30		
15	Lindsay Allen	5-14	1-1	1-4	0	4	4	3	12	4	3	0	0	0	40		
24	Arike Ogunbowale	3-9	0-1	0-0	2	2	4	2	6	3	2	0	0	0	22		
33	Kathryn Westbeld	4-5	0-0	0-0	2	4	6	2	8	1	0	0	1	0	26		
05	Jackie Young	0-1	0-1	0-0	0	1	1	3	0	0	1	0	0	0	10		
14	Mychal Johnson	1-3	0-1	0-0	0	2	2	1	2	0	2	0	0	3	19		
21	Kristina Nelson	1-3	0-0	0-0	0	1	1	0	2	0	2	0	0	0	6		
22	Erin Boley	1-5	1-3	0-0	1	0	1	1	3	1	1	0	0	0	14		
Team						5		10						14			
Totals		26-62		6-15		4-11		13		24		37		21		62	
1st FG %		6-14 42.9%		2nd: 6-16 37.5%		3rd: 3-14 21.4%		4th: 11-18 61.1%		Game: 26-62 41.9%		Deadball		Rebounds			
3FG %		1-2 50.0%		0-3 0.0%		0-1 0.0%		5-9 55.6%		6-15 40.0%		4-11		36.4%			
FT %		0-0 0.0%		3-5 60.0%		3-4 0.0%		1-2 50.0%		4-11 36.4%		3					

##	Player	Total			3-Ptr		Rebounds			PF	TP	A	T	Blk	Stl	Min	
		FG	FGA	%	FG	FGA	Off	Def	Tot								
03	Miah Spencer	5-9	2-2	5-5	3	4	7	2	17	6	3	0	1	1	36		
04	Ashley Williams	1-1	0-0	4-4	0	3	3	3	6	3	1	1	1	1	28		
05	Chelsea Nelson	1-2	0-0	4-4	2	2	4	5	6	0	2	0	1	14			
11	Jennifer Mathurin	4-10	3-6	0-0	2	8	10	0	11	2	2	1	1	27			
22	Dominique Wilson	7-17	3-5	1-2	0	3	4	18	1	2	0	0	0	33			
01	Aislinn Konig	1-9	0-5	0-0	0	0	0	0	2	0	0	0	1	18			
15	Lucky Rudder	0-1	0-1	0-0	0	0	0	0	0	0	0	0	0	5			
21	DD Rogers	0-1	0-0	0-0	0	3	3	2	0	0	0	0	0	13			
32	Akela Maize	3-5	0-0	0-0	1	1	2	5	6	0	2	0	0	9			
44	Nae Nae Cole	2-2	0-0	0-0	0	0	0	0	4	0	1	1	0	17			
Team						3		5						7			
Totals		24-57		8-19		14-15		10		27		37		21		70	
1st FG %		8-16 50.0%		2nd: 6-15 40.0%		3rd: 6-16 37.5%		4th: 4-10 40.0%		Game: 24-57 42.1%		Deadball		Rebounds			
3FG %		2-3 66.7%		2-6 33.3%		2-7 28.6%		2-3 66.7%		8-19 42.1%		9-9		100.0%			
FT %		2-2 100.0%		0-0 0.0%		3-4 75.0%		0-0 0.0%		14-15 93.3%		0					

Officials: Lawson Newton, Rachelle Jones, Bruce Morris
Technical fouls: #2/2 Notre Dame-None, NC State-None.
Attendance: 3677
Fouled Out: NCSU: #32 Maize, A. @ 0:54.9 in 3rd quarter
 #5 Nelson, C. @ 0:33.8 in 4th quarter
 ND: #11 Turner, B. @ 2:21 in 4th quarter

Score by periods	1st	2nd	3rd	4th	Total	Points	In Paint	Off T/O	2nd Chance	Fast Break	Bench	Rebounds
#2/2 Notre Dame	13	15	6	28	62	30	16	11	7	7	7	30
NC State	20	14	17	19	70	24	17	11	11	11	12	24

Last FG - ND 4th-00:20, ST 4th-03:27.
 Largest lead - ND None, ST by 19 3rd-04:42.
 ND led for 00:00, ST led for 38:54. Game was tied for 01:06.
 Score tied - 1 time.
 Lead changed - 0 times.

Game 15: #7/2 Notre Dame 55, Georgia Tech 38

Jan. 2, 2017 • McCamish Pavilion • Atlanta, Georgia

##	Player	Total			3-Ptr		Rebounds			PF	TP	A	T	Blk	Stl	Min	
		FG	FGA	%	FG	FGA	Off	Def	Tot								
03	Marina Mabrey	3-9	1-4	0-0	0	1	1	1	7	4	1	0	0	0	21		
11	Brianna Turner	4-7	0-0	1-4	3	8	11	2	9	0	1	6	4	27			
15	Lindsay Allen	3-6	0-1	1-2	1	6	7	3	7	8	3	0	4	38			
24	Arike Ogunbowale	8-18	2-6	0-0	1	3	4	2	18	0	2	0	1	32			
33	Kathryn Westbeld	1-3	0-0	0-0	2	1	3	1	2	1	3	0	0	16			
05	Jackie Young	0-2	0-0	0-0	0	1	1	3	0	0	0	0	0	23			
14	Mychal Johnson	0-1	0-0	2-2	0	1	1	2	2	0	1	0	1	14			
20	Ali Patberg	0-0	0-0	0-0	0	0	0	1	0	0	0	0	0	2			
21	Kristina Nelson	2-3	0-0	1-2	2	3	5	2	5	1	3	1	0	13			
22	Erin Boley	2-8	1-5	0-0	1	0	1	0	5	1	0	0	0	14			
Team						3		3						6			
Totals		32-57		4-16		5-10		13		27		40		17		55	
1st FG %		8-14 57.1%		2nd: 8-19 42.1%		3rd: 5-13 38.5%		4th: 2-11 18.2%		Game: 32-57 56.1%		Deadball		Rebounds			



MARINA MABREY

GUARD | 5-11 | SOPHOMORE | BELMAR, N.J. | MANASQUAN

3

GAMES WITH ...

	Season	Career
Double Figure Points	7	28
20-Plus Points	2	3
30-Plus Points	0	0
10-Plus Rebounds	0	1
10-Plus Assists	0	1
Double-Double	0	1

NOTABLES

HONORS AND AWARDS:

- 2016 ACC All-Freshman Team
- 2016 ACC All-Academic Team
- 2015 Junkanoo Jam All-Tournament Team

2016-17 SEASON:

- Tied a career-high 33 minutes at North Carolina State on 12/29/16 (also at Michigan State on 12/20/16), when she gathered 22 points, and five rebounds.
- Recorded her 500th career point on 12/18/16 at Toledo, where she scored 19 points and collected six rebounds.
- Has made 14 starts and has averaged 12.5 points and 3.3 rebounds.
- Scored a season-high 27 points on 11/22/16 versus Louisiana-Lafayette.

2015-16 SEASON:

- Played in all 35 games, averaging 10.7 points and 1.5 steals per game.

2016-17 GAME-BY-GAME

Opponent	Min	FG-A	3FG-A	FT-A	O-D-R	PF	A	TO	B	S	Pts
11/11 Central Mich.	26	4-8	3-7	6-7	1-2-3	2	5	2	1	1	17
11/14 ·Fordham	18	2-9	0-3	3-3	1-1-2	2	0	2	0	0	7
11/17 ·Green Bay	21	4-11	1-5	4-4	3-1-4	0	3	2	1	1	13
11/20 ·Washington	14	2-6	0-1	0-0	2-0-2	2	2	1	0	4	4
11/22 ·vs. UL-Lafayette	25	10-15	4-7	3-3	2-1-3	2	3	2	0	3	27
11/26 ·TCU	28	6-13	3-7	2-2	3-2-5	2	2	1	0	0	17
11/30 ·at Iowa	23	4-10	1-3	0-0	2-2-4	3	2	3	1	5	9
12/04 ·Valparaiso	26	7-11	1-4	1-2	0-1-1	1	4	2	1	0	1
12/07 ·Connecticut	18	1-8	0-4	0-0	1-1-2	3	1	1	0	0	2
12/10 ·at DePaul	29	1-6	0-1	5-6	3-3-6	2	4	2	0	2	7
12/18 ·at Toledo	30	8-12	2-3	1-1	1-5-6	4	3	5	2	1	19
12/20 ·at Michigan St.	33	7-15	3-6	2-2	1-4-5	1	5	0	1	1	19
12/27 ·at Chattanooga	13	1-2	0-1	0-0	1-0-1	0	2	1	0	1	2
12/29 ·at NC State*	33	8-14	4-8	2-3	3-2-5	4	4	2	1	0	22
01/02 ·at Ga. Tech*	21	3-9	1-4	0-0	0-1-1	1	4	1	0	0	7
01/05 Wake Forest*											
01/08 at Miami*											
01/12 Pittsburgh*											
01/16 at Tennessee											
01/19 at BC*											
01/22 at UNC*											
01/26 Duke*											
01/29 Virginia*											
02/02 at Va. Tech*											
02/06 Louisville*											
02/12 Georgia Tech*											
02/16 at Clemson*											
02/19 at Syracuse*											
02/23 BC*											
02/26 Florida State*											

CAREER AND SEASON HIGHS

Points	
Season	27 vs. UL-Lafayette (11/22/16)
Career	27 vs. UL-Lafayette (11/22/16)
Rebounds	
Season	6, 2x, at Toledo (12/18/16)
Career	6, 5x, at Toledo (12/18/16)
Assists	
Season	5, 2x, at Michigan State (12/20/16)
Career	10 at Valparaiso (11/23/15)
Steals	
Season	5 at Iowa (11/30/16)
Career	12 at Valparaiso (11/23/15)
Blocks	
Season	2 at Toledo (12/18/16)
Career	2, 4x, at Toledo (12/18/16)
Field Goals Made	
Season	10 vs. UL-Lafayette (11/22/16)
Career	10, 2x, vs. UL-Lafayette (11/22/16)
3-Point FGs Made	
Season	4, 2x, at NC State (12/29/16)
Career	4, 2x, at NC State (12/29/16)
Free Throws Made	
Season	6 vs. Central Michigan (11/11/16)
Career	7, 2x, vs. NC A&T (03/19/16)
Minutes	
Season	33, 2x, at NC State (12/29/16)
Career	33, 2x, at NC State (12/29/16)

CAREER STATISTICS

SEASON	GP-GS	MIN/AVG	FG-FGA	PCT	3FG-FGA	PCT	FT-FTA	PCT	ORB	DRB	REB	AVG	PF	DQ	AST	TO	BLK	STL	PTS	AVG
2015-16	35-2	662/18.9	127-247	.514	34-75	.453	85-104	.817	22	76	98	2.8	71	0	69	70	12	53	373	10.7
2016-17	15-14	358/23.9	68-149	.456	23-64	.359	29-33	.879	24	26	50	3.3	29	0	44	27	8	19	188	12.5
TOTAL	50-16	1,020/20.4	195-396	.492	57-139	.410	114-137	.832	46	102	148	3.0	100	0	113	97	20	72	561	11.2



JACKIE YOUNG

GUARD | 6-0 | FRESHMAN | PRINCETON, IND. | PRINCETON COMMUNITY

5

GAMES WITH ...

	Season	Career
Double Figure Points	3	3
20-Plus Points	1	1
30-Plus Points	0	0
5-Plus Rebounds	4	4
5-Plus Assists	0	0
Double-Double	0	0

NOTABLES

HONORS AND AWARDS:

- ACC Rookie of the Week (December 5, 2016)
- 2016 Naismith National Player of the Year
- 2016 McDonald's All-American
- 2016 Indiana Gatorade Player of the Year
- 2016 IBCA Senior Supreme All-State
- 2016 IndyStar Miss Basketball

2016-17 SEASON:

- Returned from an ankle injury with two minutes of action at Michigan State on 12/20/16.
- Was named Atlantic Coast Conference Rookie of the Week on 12/05/16, following her break-through game versus Valparaiso (20 points, six steals, five rebounds and three assists). She also tallied five points and three rebounds in the team's win at Iowa on 11/30/16.
- Scored a career-high 20 points with six steals and five rebounds vs. Valparaiso on 12/04/16. She became the first Irish player to score 20 points off the bench since Arike Ogunbowale had 21 at TCU on 12/12/15.
- Scored three points and recorded seven rebounds in her college debut against Green Bay on 11/17/16.

HIGH SCHOOL:

- Averaged 34 points, nine rebounds and five assists as a senior at Princeton Community High School.

2016-17 GAME-BY-GAME

	Opponent	Min	FG-A	3FG-A	FT-A	O-D-R	PF	A	TO	B	S	Pts
11/11	Central Mich.					DNP						
11/14	Fordham					DNP						
11/17	Green Bay	15	1-4	1-1	0-0	4-3-7	1	1	1	0	0	3
11/20	Washington	21	2-5	1-3	3-4	0-2-2	1	0	1	1	0	8
11/22	vs. UL-Lafayette	21	5-8	1-1	2-4	1-5-6	1	4	2	1	0	13
11/26	TCU	25	5-11	0-2	2-2	2-3-5	4	3	3	1	0	12
11/30	at Iowa	16	2-7	0-0	1-1	1-2-3	4	0	2	0	1	5
12/04	Valparaiso	26	8-9	3-4	1-1	1-4-5	1	3	1	0	6	20
12/07	Connecticut	30	3-4	1-1	0-0	1-3-4	4	0	2	1	4	7
12/10	at DePaul					DNP						
12/18	at Toledo					DNP						
12/20	at Michigan St.	2	0-0	0-0	0-0	0-0-0	0	0	0	0	0	0
12/27	at Chattanooga	16	1-4	0-0	1-2	1-2-3	1	1	1	0	0	3
12/29	at NC State*	10	0-1	0-1	0-0	0-1-1	3	0	1	0	0	0
01/02	at Ga. Tech*	23	0-2	0-0	0-0	0-1-1	3	0	0	0	1	0
01/05	Wake Forest*											
01/08	at Miami*											
01/12	Pittsburgh*											
01/16	at Tennessee											
01/19	at BC*											
01/22	at UNC*											
01/26	Duke*											
01/29	Virginia*											
02/02	at Va. Tech*											
02/06	Louisville*											
02/12	Georgia Tech*											
02/16	at Clemson*											
02/19	at Syracuse*											
02/23	BC*											
02/26	Florida State*											

CAREER AND SEASON HIGHS

Points	
Season	20 vs. Valparaiso (12/04/16)
Career	20 vs. Valparaiso (12/04/16)
Rebounds	
Season	7 vs. Green Bay (11/17/16)
Career	7 vs. Green Bay (11/17/16)
Assists	
Season	4 vs. UL-Lafayette (11/22/16)
Career	4 vs. UL-Lafayette (11/22/16)
Steals	
Season	6 vs. Valparaiso (12/04/16)
Career	6 vs. Valparaiso (12/04/16)
Blocks	
Season	1, 4x, vs. Connecticut (12/07/16)
Career	1, 4x, vs. Connecticut (12/07/16)
Field Goals Made	
Season	8 vs. Valparaiso (12/04/16)
Career	8 vs. Valparaiso (12/04/16)
3-Point FGs Made	
Season	3 vs. Valparaiso (12/04/16)
Career	3 vs. Valparaiso (12/04/16)
Free Throws Made	
Season	3 vs. Washington (11/20/16)
Career	3 vs. Washington (11/20/16)
Minutes	
Season	30 vs. Connecticut (12/07/16)
Career	30 vs. Connecticut (12/07/16)

CAREER STATISTICS

SEASON	GP-GS	MIN/AVG	FG-FGA	PCT	3FG-FGA	PCT	FT-FTA	PCT	ORB	DRB	REB	AVG	PF	DQ	AST	TO	BLK	STL	PTS	AVG
2016-17	11-0	205/18.6	27-55	.491	7-13	.538	10-14	.714	11	26	37	3.4	23	0	12	14	4	12	71	6.5
TOTAL	11-0	205/18.6	27-55	.491	7-13	.538	10-14	.714	11	26	37	3.4	23	0	12	14	4	12	71	6.5



BRIANNA TURNER

FORWARD | 6-3 | JUNIOR | PEARLAND, TEXAS | MANVEL

11

GAMES WITH ...

	Season	Career
Double Figure Points	13	65
20-Plus Points	2	12
30-Plus Points	0	0
10-Plus Rebounds	4	22
10-Plus Assists	0	0
Double-Double	4	18

NOTABLES

HONORS AND AWARDS:

- 2016 Wade Trophy Watch List
- 2016-17 AP Preseason All-American
- 2016 WBCA Coaches' All-America Team
- 2016 USBWA All-America Team
- 2016 Honda Sport Award Finalist
- 2016 Naismith Trophy Semifinalist

2016-17 SEASON:

- Snapped a streak of 31 consecutive games with double-figure points, including 13 straight games this season, with seven points in the team's loss at North Carolina State on 12/29/16.
- Was named Atlantic Coast Conference Player of the Week the week of December 12, 2016. She scored 30 points and collected 23 rebounds during that period.
- Recorded her 1,000th career point on 11/30/16 at Iowa. She became the 36th Irish player to accomplish the feat and second Notre Dame player this season (also Lindsay Allen on 11/17/16 vs. Green Bay).
- Scored a season-high 26 points and gathered eight rebounds on 12/18/16 at Toledo.
- Played a season-high 37 minutes at Michigan State on 12/20/16, scoring 19 points with seven rebounds.
- Recorded back-to-back double-doubles against Washington and Louisiana-Lafayette, scoring a combined 26 points and collecting 24 rebounds.

2016-17 GAME-BY-GAME

Opponent	Min	FG-A	3FG-A	FT-A	O-D-R	PF	A	TO	B	S	Pts
11/11 ·Central Mich.	20	5-8	0-0	2-4	2-1-3	1	1	2	0	0	12
11/14 ·Fordham	28	5-10	0-0	0-2	2-6-8	1	0	3	1	1	10
11/17 ·Green Bay	30	5-10	0-0	4-6	3-1-4	2	3	1	2	1	14
11/20 ·Washington	27	3-6	0-0	4-6	4-8-12	3	0	1	1	0	10
11/22 ·vs. UL-Lafayette	30	8-13	0-0	0-2	3-9-12	1	1	2	1	0	16
11/26 ·TCU	15	7-10	0-0	4-5	2-1-3	2	1	1	1	1	18
11/30 ·at Iowa	31	6-11	0-0	3-5	1-3-4	3	1	3	0	1	15
12/04 ·Valparaiso	19	6-11	0-0	1-2	3-1-4	3	1	1	2	0	13
12/07 ·Connecticut	36	7-14	0-0	2-2	8-4-12	2	3	0	2	1	16
12/10 ·at DePaul	26	4-8	0-0	6-7	3-8-11	2	2	4	2	0	14
12/18 ·at Toledo	30	11-13	0-0	4-7	2-6-8	1	2	3	2	1	26
12/20 ·at Michigan St.	37	7-15	0-0	5-8	2-5-7	2	1	2	5	0	19
12/27 ·at Chattanooga	28	10-13	0-0	4-8	4-1-5	1	1	1	6	0	24
12/29 ·at NC State*	30	3-8	0-0	1-4	0-3-3	5	2	2	1	0	7
01/02 ·at Ga. Tech*	27	4-7	0-0	1-4	3-8-11	2	0	1	6	4	9
01/05 Wake Forest*											
01/08 at Miami*											
01/12 Pittsburgh*											
01/16 at Tennessee											
01/19 at BC*											
01/22 at UNC*											
01/26 Duke*											
01/29 Virginia*											
02/02 at Va. Tech*											
02/06 Louisville*											
02/12 Georgia Tech*											
02/16 at Clemson*											
02/19 at Syracuse*											
02/23 BC*											
02/26 Florida State*											

CAREER AND SEASON HIGHS

Points	
Season	26 at Toledo (12/18/16)
Career	29, 2x, at UNC (01/15/15)
Rebounds	
Season	12, 3x, vs. Connecticut (12/07/16)
Career	18 at UNC (01/15/15)
Assists	
Season	3, 2x, vs. Connecticut (12/07/16)
Career	3, 6x, vs. Connecticut (12/07/16)
Steals	
Season	4, at Georgia Tech (01/02/17)
Career	4, at Georgia Tech (01/02/17)
Blocks	
Season	6, 2x, at Georgia Tech (01/02/17)
Career	7, 3x, vs. Louisville (02/23/15)
Field Goals Made	
Season	11 at Toledo (12/18/16)
Career	13 vs. UMass Lowell (11/14/14)
3-Point FGs Made	
Season	-
Career	-
Free Throws Made	
Season	6 at DePaul (12/10/16)
Career	9 at UNC (01/15/15)
Minutes	
Season	37 at Michigan State (12/20/16)
Career	38 at Duke (02/01/16)

CAREER STATISTICS

SEASON	GP-GS	MIN/AVG	FG-FGA	PCT	3FG-FGA	PCT	FT-FTA	PCT	ORB	DRB	REB	AVG	PF	DQ	AST	TO	BLK	STL	PTS	AVG
2014-15	36-35	921/25.6	202-310	.652	0-0	.000	92-152	.605	103	180	283	7.9	86	1	25	75	89	39	496	13.8
2015-16	29-29	783/27.0	169-285	.593	0-0	.000	85-133	.639	66	146	212	7.3	63	1	27	41	88	24	423	14.6
2016-17	15-15	414/27.6	91-157	.580	0-0	.000	41-72	.569	42	65	107	7.1	31	1	19	27	32	10	223	14.9
TOTAL	80-79	2,118/26.5	462-752	.614	0-0	.000	218-357	.611	211	391	602	7.5	180	3	71	143	209	73	1,142	14.3



MYCHAL JOHNSON

GUARD | 5-7 | JUNIOR | HUNTINGTON, W.VA. | HUNTINGTON ST. JOSEPH

14

GAMES WITH ...

	Season	Career
5-Point Games	4	16
Double Figure Points	1	5
20-Plus Points	0	0
5-Plus Rebounds	1	3
10-Plus Rebounds	0	0
5-Plus Assists	1	2

NOTABLES

2016-17 SEASON:

- Made her second start of the season in Notre Dame's game at Michigan State, her first start since the season opener on 11/11/16 versus Central Michigan.
- Played a career-high 31 minutes at DePaul on 12/10/16, scoring a season-high 10 points.

2015-16 SEASON:

- Appeared in 31 games as a sophomore, averaging 2.3 points and 1.2 rebounds per game.

2016-17 GAME-BY-GAME

Opponent	Min	FG-A	3FG-A	FT-A	O-D-R	PF	A	TO	B	S	Pts
11/11 -Central Mich.	27	2-4	1-2	2-2	0-2-2	3	4	0	1	4	7
11/14 Fordham	23	1-2	0-1	0-0	0-1-1	3	4	1	0	1	2
11/17 Green Bay	20	1-2	1-1	2-2	0-0-0	3	0	0	0	0	5
11/20 Washington	12	0-1	0-1	0-0	0-1-1	1	0	0	0	1	0
11/22 vs. UL-Lafayette	21	1-1	0-0	0-0	0-4-4	0	1	2	1	3	2
11/26 TCU	17	0-0	0-0	0-0	0-1-1	1	0	1	0	0	0
11/30 at Iowa	17	0-1	0-1	0-0	0-2-2	0	0	0	0	2	0
12/04 Valparaiso	25	2-4	2-4	0-0	2-4-6	0	4	3	0	1	6
12/07 Connecticut	12	1-3	1-2	0-0	0-1-1	0	0	1	0	1	3
12/10 at DePaul	31	4-7	2-4	0-0	0-1-1	1	1	0	0	1	10
12/18 at Toledo	29	1-3	0-0	0-0	0-0-0	3	3	1	0	3	2
12/20 -at Michigan St.	28	1-2	0-1	1-1	0-0-0	2	5	2	0	0	3
12/27 at Chattanooga	23	0-1	0-1	0-0	0-3-3	4	0	1	0	1	0
12/29 at NC State*	19	1-3	0-1	0-0	0-2-2	1	0	2	0	3	2
01/02 at Ga. Tech*	14	0-1	0-0	2-2	0-1-1	2	0	1	0	1	2
01/05 Wake Forest*											
01/08 at Miami*											
01/12 Pittsburgh*											
01/16 at Tennessee											
01/19 at BC*											
01/22 at UNC*											
01/26 Duke*											
01/29 Virginia*											
02/02 at Va. Tech*											
02/06 Louisville*											
02/12 Georgia Tech*											
02/16 at Clemson*											
02/19 at Syracuse*											
02/23 BC*											
02/26 Florida State*											

CAREER AND SEASON HIGHS

Points	
Season	10 at DePaul (12/10/16)
Career	17 vs. Chattanooga (11/21/14)
Rebounds	
Season	6 vs. Valparaiso (12/04/16)
Career	8 vs. Syracuse (01/21/16)
Assists	
Season	5 at Michigan State (12/20/16)
Career	7 vs. Quinnipiac (11/25/14)
Steals	
Season	4 vs. Central Michigan (11/11/16)
Career	4, 2x, vs. Central Mich. (11/11/16)
Blocks	
Season	1, 2x, vs. UL-Lafayette (11/22/16)
Career	2 vs. Miami (02/14/16)
Field Goals Made	
Season	4 at DePaul (12/10/16)
Career	6 vs. Chattanooga (11/21/14)
3-Point FGs Made	
Season	2, 2x, at DePaul (12/10/16)
Career	5 vs. Chattanooga (11/21/14)
Free Throws Made	
Season	2, 3x, at Georgia Tech (01/02/17)
Career	4 vs. Holy Cross (11/23/14)
Minutes	
Season	31 at DePaul (12/10/16)
Career	31 at DePaul (12/10/16)

CAREER STATISTICS

SEASON	GP-GS	MIN/AVG	FG-FGA	PCT	3FG-FGA	PCT	FT-FTA	PCT	ORB	DRB	REB	AVG	PF	DQ	AST	TO	BLK	STL	PTS	AVG
2014-15	28-0	320/11.4	28-84	.333	11-34	.324	20-29	.690	7	25	32	1.14	33	0	25	18	4	14	87	3.1
2015-16	31-0	371/12.0	16-53	.302	9-28	.321	29-43	.674	5	33	38	1.2	40	0	19	18	4	16	70	2.3
2016-17	15-2	318/21.2	15-35	.429	7-19	.368	7-7	1.000	2	23	25	1.7	24	0	22	15	2	22	44	2.9
TOTAL	74-2	1,009/13.6	59-172	.343	27-81	.333	56-79	.709	14	81	95	1.3	97	0	66	51	10	52	201	2.7



LINDSAY ALLEN

GUARD | 5-8 | SENIOR | MITCHELLVILLE, MD. | ST. JOHN'S COLLEGE

15

GAMES WITH ...

	Season	Career
Double-Figure Points	9	50
20-Plus Points	0	7
5-Rebound Games	11	38
5-Assist Games	12	78
Double-Figure Assists	2	4
5-5-5 Games	8	28
Triple Doubles	1	1

NOTABLES

HONORS AND AWARDS:

- 2016 Wade Trophy Watch List
- 2016-17 Nancy Lieberman Award Watch List
- 2016 Preseason WNIT All-Tournament Team
- 2016 Nancy Lieberman Award Finalist
- 2016 Naismith Trophy Midseason Top 30 List
- WBCA Coaches' All-America Team Finalist
- Two-time team captain (2015-16 & 2016-17)

2016-17 SEASON:

- Ranks first in the ACC and seventh in the country with a 3.52 assist/turnover ratio. Her 7.3 assists per game are most in the ACC and eighth-most in the country.
- Recorded her first career triple-double (previously had never finished with a double-double) with 11 points, 11 rebounds and 12 assists at Chattanooga on 12/27/16. The triple-double was the sixth in program history and the fourth consisting of points, rebounds and assists.
- Selected to the 2016 Preseason WNIT All-Tournament team after recording 13 points, five rebounds and four assists in the tournament finale versus Washington on 11/20/16.
- Scored her 1,000th point on 11/17/16 versus Green Bay and recorded her 600th assist on 11/26/16 versus TCU. She became the 35th Irish player to score 1,000 points and the first of two to do so this season (also Brianna Turner). Allen joins Skylar Diggins, Niele Ivey and Mollie Peirick as the only Irish players to score 1,000 career points and collect 600 career assists.
- Gathered a career-high 12 assists on 11/26/16 versus TCU.

2015-16 SEASON:

- Started all 33 games as a junior, averaging 9.3 points and a career-high 5.8 assists per game with a 2.52 assist/turnover ratio.

2016-17 GAME-BY-GAME

Opponent	Min	FG-A	3FG-A	FT-A	O-D-R	PF	A	TO	B	S	Pts
11/11 ·Central Mich.	19	6-8	1-2	0-0	0-5-5	0	8	0	0	4	13
11/14 ·Fordham	37	5-5	0-0	3-4	2-4-6	2	5	1	0	2	13
11/17 ·Green Bay	40	1-6	0-0	6-8	0-5-5	0	8	4	0	3	8
11/20 ·Washington	40	5-12	0-1	3-6	2-3-5	2	4	2	0	1	13
11/22 ·vs. UL-Lafayette	25	1-1	0-0	0-0	1-5-6	3	9	3	0	1	2
11/26 ·TCU	32	1-3	0-0	0-0	2-2-4	1	12	2	0	3	2
11/30 ·at Iowa	37	5-13	1-2	0-0	1-5-6	2	8	1	1	5	11
12/04 ·Valparaiso	19	3-5	0-0	2-2	2-2-4	1	6	1	0	4	8
12/07 ·Connecticut	40	5-8	0-1	1-4	0-5-5	3	8	1	0	1	11
12/10 ·at DePaul	40	6-11	0-0	2-3	1-8-9	3	3	2	0	1	14
12/18 ·at Toledo	32	4-7	0-0	2-3	1-1-2	3	8	1	0	4	10
12/20 ·at Michigan St.	25	4-8	0-0	1-1	0-5-5	4	6	3	0	1	9
12/27 ·at Chattanooga	35	5-9	0-0	1-1	1-10-11	0	12	4	0	1	11
12/29 ·at NC State*	40	5-14	1-1	1-4	0-4-4	3	4	3	0	0	12
01/02 ·at Ga. Tech*	38	3-6	0-1	1-2	1-6-7	3	8	3	0	4	7
01/05 Wake Forest*											
01/08 at Miami*											
01/12 Pittsburgh*											
01/16 at Tennessee											
01/19 at BC*											
01/22 at UNC*											
01/26 Duke*											
01/29 Virginia*											
02/02 at Va. Tech*											
02/06 Louisville*											
02/12 Georgia Tech*											
02/16 at Clemson*											
02/19 at Syracuse*											
02/23 BC*											
02/26 Florida State*											

CAREER AND SEASON HIGHS

Points	
Season	14 at DePaul (12/10/16)
Career	28 vs. Stanford (03/27/15)
Rebounds	
Season	9 at DePaul (12/10/16)
Career	9, 2x, at DePaul (12/10/16)
Assists	
Season	12, 2x, at Chattanooga (12/27/16)
Career	12, 2x, at Chattanooga (12/27/16)
Steals	
Season	5 at Iowa (11/30/16)
Career	5, 2x, at Iowa (11/30/16)
Blocks	
Season	1 at Iowa (11/30/16)
Career	2 vs. Central Michigan (12/22/13)
Field Goals Made	
Season	6, 2x, at DePaul (12/10/16)
Career	10, 2x, vs. Indiana (03/21/16)
3-Point FGs Made	
Season	1, 3x, at NC State (12/29/16)
Career	4, 2x, vs. Stanford (03/27/15)
Free Throws Made	
Season	6 vs. Green Bay (11/17/16)
Career	6, 5x, vs. Green Bay (11/17/16)
Minutes	
Season	40, 5x, at NC State (12/29/16)
Career	40, 9x, at NC State (12/29/16)

CAREER STATISTICS

SEASON	GP-GS	MIN/AVG	FG-FGA	PCT	3FG-FGA	PCT	FT-FTA	PCT	ORB	DRB	REB	AVG	PF	DQ	AST	TO	BLK	STL	PTS	AVG
2013-14	38-38	1017/26.8	77-155	.497	15-42	.357	66-81	.815	11	79	90	2.4	81	0	150	67	9	49	235	6.2
2014-15	39-39	1211/31.1	155-297	.522	20-54	.370	76-89	.854	23	115	138	3.54	75	2	205	96	3	52	406	10.4
2015-16	35-35	1047/29.9	127-255	.498	8-30	.267	65-91	.714	21	110	131	3.7	69	0	204	81	3	45	327	9.3
2016-17	15-15	499/33.3	59-116	.509	3-8	.375	23-38	.605	14	70	84	5.6	30	0	109	31	1	35	144	9.6
TOTAL	127-127	3,774/29.7	418-823	.508	46-134	.343	230-299	.769	69	374	443	3.5	255	2	668	275	16	181	1,112	8.8



ALI PATBERG

GUARD | 5-10 | SOPHOMORE | COLUMBUS, IND. | COLUMBUS NORTH

20

GAMES WITH ...

	Season	Career
Double Figure Points	0	0
20-Plus Points	0	0
30-Plus Points	0	0
10-Plus Rebounds	0	0
10-Plus Assists	0	0
Double-Double	0	0

NOTABLES

HONORS AND AWARDS:

- 2015 MaxPreps National High School Player of the Year
- 2015 McDonald's High School All-American

2016-17 SEASON:

- After being sidelined for eight games due to illness, made her return to the court on 12/18/16 at Toledo.
- Recorded three rebounds and three assists in 14 minutes against Central Michigan in her college debut.

2015-16 SEASON:

- Did not play due to injury.

2016-17 GAME-BY-GAME

Opponent	Min	FG-A	3FG-A	FT-A	O-D-R	PF	A	TO	B	S	Pts
11/11 Central Mich.	14	0-0	0-0	0-0	0-3-3	1	3	0	0	0	0
11/14 Fordham	7	0-0	0-0	0-0	0-1-1	2	0	0	0	1	0
11/17 Green Bay					DNP						
11/20 Washington					DNP						
11/22 vs. UL-Lafayette					DNP						
11/26 TCU					DNP						
11/30 at Iowa					DNP						
12/04 Valparaiso					DNP						
12/07 Connecticut					DNP						
12/10 at DePaul					DNP						
12/18 at Toledo	3	0-0	0-0	0-0	0-1-1	0	0	0	0	0	0
12/20 at Michigan St.	1	0-0	0-0	0-0	0-0-0	0	0	0	0	0	0
12/27 at Chattanooga	3	0-0	0-0	0-0	0-1-1	0	0	0	0	0	0
12/29 at NC State*					DNP						
01/02 at Ga. Tech*	2	0-0	0-0	0-0	0-0-0	1	0	0	0	0	0
01/05 Wake Forest*											
01/08 at Miami*											
01/12 Pittsburgh*											
01/16 at Tennessee											
01/19 at BC*											
01/22 at UNC*											
01/26 Duke*											
01/29 Virginia*											
02/02 at Va. Tech*											
02/06 Louisville*											
02/12 Georgia Tech*											
02/16 at Clemson*											
02/19 at Syracuse*											
02/23 BC*											
02/26 Florida State*											

CAREER AND SEASON HIGHS

Points	
Season	-
Career	-
Rebounds	
Season	3 vs. Central Michigan (11/11/16)
Career	3 vs. Central Michigan (11/11/16)
Assists	
Season	3 vs. Central Michigan (11/11/16)
Career	3 vs. Central Michigan (11/11/16)
Steals	
Season	1 vs. Fordham (11/14/16)
Career	1 vs. Fordham (11/14/16)
Blocks	
Season	-
Career	-
Field Goals Made	
Season	-
Career	-
3-Point FGs Made	
Season	-
Career	-
Free Throws Made	
Season	-
Career	-
Minutes	
Season	14 vs. Central Michigan (11/11/16)
Career	14 vs. Central Michigan (11/11/16)

CAREER STATISTICS

SEASON	GP-GS	MIN/AVG	FG-FGA	PCT	3FG-FGA	PCT	FT-FTA	PCT	ORB	DRB	REB	AVG	PF	DQ	AST	TO	BLK	STL	PTS	AVG
2015-16	DNP - Injury																			
2016-17	6-0	30/5.0	0-0	.000	0-0	.000	0-0	.000	0	6	6	1.0	4	0	3	0	0	1	0	0.0
TOTAL	6-0	30/5.0	0-0	.000	0-0	.000	0-0	.000	0	6	6	1.0	4	0	3	0	0	1	0	0.0



KRISTINA NELSON

FORWARD | 6-4 | SENIOR | BUFORD, GA. | BUFORD

21

GAMES WITH ...

	Season	Career
Double Figure Points	0	2
20-Plus Points	0	0
30-Plus Points	0	0
5-Plus Rebounds	6	11
10-Plus Rebounds	0	0
Double-Double	0	0

NOTABLES

HONORS AND AWARDS:

- 2016 ACC Academic Honor Roll

2016-17 SEASON:

- Collected a career-high nine rebounds and two steals in the team's season opener versus Central Michigan on 11/11/16.
- Has recorded six five-plus rebound games this season and 11 such games in her career. Is more than halfway to her 2015-16 rebound total (54 this season; 73 in 2015-16) through 15 games this season.

2016-17 GAME-BY-GAME

Opponent	Min	FG-A	3FG-A	FT-A	O-D-R	PF	A	TO	B	S	Pts
11/11 Central Mich.	20	4-10	0-0	0-0	4-5-9	2	2	1	1	2	8
11/14 Fordham	18	3-6	0-0	3-5	2-5-7	4	1	3	1	1	9
11/17 Green Bay	9	0-5	0-0	0-0	0-1-1	2	0	2	1	0	0
11/20 Washington	16	2-7	0-0	1-2	0-6-6	3	3	1	0	0	5
11/22 vs. UL-Lafayette	13	2-3	0-0	1-2	2-3-5	5	2	6	3	1	5
11/26 TCU	15	0-4	0-0	2-2	1-1-2	3	1	1	1	1	2
11/30 at Iowa	13	2-3	0-0	0-0	1-2-3	2	0	0	0	0	4
12/04 Valparaiso	24	4-6	0-0	0-0	0-6-6	4	3	2	4	1	8
12/07 Connecticut	7	1-3	0-0	0-0	0-2-2	1	1	1	0	0	2
12/10 at DePaul	10	1-7	0-0	0-0	3-1-4	3	0	2	0	0	2
12/18 at Toledo	9	0-2	0-0	2-4	0-0-0	0	1	1	0	1	2
12/20 at Michigan St.	1	0-0	0-0	0-0	0-0-0	0	0	2	0	0	0
12/27 at Chattanooga	12	4-5	0-0	0-0	1-2-3	5	0	1	0	0	8
12/29 at NC State*	6	1-3	0-0	0-0	0-1-1	0	0	2	0	0	2
01/02 at Ga. Tech*	13	2-3	0-0	1-2	2-3-5	2	1	3	1	0	5
01/05 Wake Forest*											
01/08 at Miami*											
01/12 Pittsburgh*											
01/16 at Tennessee											
01/19 at BC*											
01/22 at UNC*											
01/26 Duke*											
01/29 Virginia*											
02/02 at Va. Tech*											
02/06 Louisville*											
02/12 Georgia Tech*											
02/16 at Clemson*											
02/19 at Syracuse*											
02/23 BC*											
02/26 Florida State*											

CAREER AND SEASON HIGHS

Points	
Season	9 vs. Fordham (11/14/16)
Career	10, 2x, vs. Wake Forest (02/18/16)
Rebounds	
Season	9 vs. Central Michigan (11/11/16)
Career	9 vs. Central Michigan (11/11/16)
Assists	
Season	3, 2x, vs. Valparaiso (12/04/16)
Career	3, 3x, vs. Valparaiso (12/04/16)
Steals	
Season	2 vs. Central Michigan (11/11/16)
Career	2 vs. Central Michigan (11/11/16)
Blocks	
Season	4 vs. Valparaiso (12/04/16)
Career	4 vs. Valparaiso (12/04/16)
Field Goals Made	
Season	4, 3x, at Chattanooga (12/27/16)
Career	5 vs. Wake Forest (02/18/16)
3-Point FGs Made	
Season	-
Career	-
Free Throws Made	
Season	3 vs. Fordham (11/14/16)
Career	3 vs. Fordham (11/14/16)
Minutes	
Season	24 vs. Valparaiso (12/04/16)
Career	24 vs. Valparaiso (12/04/16)

CAREER STATISTICS

SEASON	GP-GS	MIN/AVG	FG-FGA	PCT	3FG-FGA	PCT	FT-FTA	PCT	ORB	DRB	REB	AVG	PF	DQ	AST	TO	BLK	STL	PTS	AVG
2013-14	32-0	129/4.0	28-50	.560	0-0	.000	9-17	.529	9	21	30	0.94	39	1	7	17	3	1	65	2.0
2014-15	DNP-Injury																			
2015-16	31-0	259/8.4	37-75	.493	0-0	.000	13-22	.591	29	44	73	2.4	45	0	17	31	12	4	87	2.8
2016-17	15-0	186/12.4	26-67	.388	0-0	.000	10-17	.588	16	38	54	3.6	36	2	15	28	12	7	62	4.1
TOTAL	78-0	574/7.4	91-192	.474	0-0	.000	32-56	.571	54	103	157	2.0	120	3	39	76	27	12	214	2.7



ERIN BOLEY

FORWARD | 6-2 | FRESHMAN | HODGENVILLE, KY. | ELIZABETHTOWN

22

GAMES WITH ...

	Season	Career
5-Point Games	11	11
Double Figure Points	3	3
20-Plus Points	0	0
5-Plus Rebounds	2	2
5-Plus Assists	0	0
Double-Double	0	0

NOTABLES

HONORS AND AWARDS:

- 2016 McDonald's All-American
- 2016 Gatorade National Player of the Year
- Three-time Kentucky Gatorade Player of the Year

2016-17 SEASON:

- In the team's win at Michigan State on 12/20/16, she scored six points and collected four rebounds in just six minutes of action.
- Scored a season-high 15 points in the team's win over Valparaiso on 12/04/16.
- Scored eight points and collected two rebounds in her college debut versus Central Michigan on 11/11/16.

HIGH SCHOOL:

- Competed in the 2015 FIBA 3x3 U18 World Championship in Hungary and guided her team to a second-place finish.
- Averaged 20.7 points, 10 rebounds and four steals as a senior at Elizabethtown High School.

2016-17 GAME-BY-GAME

Opponent	Min	FG-A	3FG-A	FT-A	O-D-R	PF	A	TO	B	S	Pts
11/11 Central Mich.	25	2-6	2-5	2-2	1-1-2	2	3	1	0	0	8
11/14 Fordham	17	1-6	1-4	4-4	0-1-1	0	0	2	0	0	7
11/17 Green Bay	5	0-4	0-1	0-0	1-2-3	0	0	0	0	1	0
11/20 Washington	1	0-1	0-0	0-0	0-0-0	0	0	0	0	0	0
11/22 vs. UL-Lafayette	17	3-9	0-5	1-1	2-6-8	0	1	1	0	0	8
11/26 TCU	11	3-4	3-4	1-2	0-3-3	0	0	0	0	0	10
11/30 at Iowa	7	2-4	1-3	0-0	0-4-4	1	0	0	0	0	5
12/04 Valparaiso	22	5-8	3-5	2-2	0-2-2	0	1	0	0	2	15
12/07 Connecticut	2	1-2	1-1	0-0	0-0-0	0	0	0	0	0	3
12/10 at DePaul	18	2-4	1-3	2-2	1-1-2	2	0	2	0	0	7
12/18 at Toledo	14	4-7	3-5	1-1	0-1-1	1	1	1	1	1	12
12/20 at Michigan St.	6	1-1	0-0	4-4	1-3-4	1	0	0	0	0	6
12/27 at Chattanooga	16	2-3	0-1	3-3	1-5-6	0	0	2	0	0	7
12/29 at NC State*	14	1-5	1-3	0-0	1-0-1	1	1	1	0	0	3
01/02 at Ga. Tech*	14	2-8	1-5	0-0	1-0-1	0	1	0	0	0	5
01/05 Wake Forest*											
01/08 at Miami*											
01/12 Pittsburgh*											
01/16 at Tennessee											
01/19 at BC*											
01/22 at UNC*											
01/26 Duke*											
01/29 Virginia*											
02/02 at Va. Tech*											
02/06 Louisville*											
02/12 Georgia Tech*											
02/16 at Clemson*											
02/19 at Syracuse*											
02/23 BC*											
02/26 Florida State*											

CAREER AND SEASON HIGHS

Points	
Season	15 vs. Valparaiso (12/04/16)
Career	15 vs. Valparaiso (12/04/16)
Rebounds	
Season	8 vs. UL-Lafayette (11/22/16)
Career	8 vs. UL-Lafayette (11/22/16)
Assists	
Season	3 vs. Central Michigan (11/11/16)
Career	3 vs. Central Michigan (11/11/16)
Steals	
Season	2 vs. Valparaiso (12/04/16)
Career	2 vs. Valparaiso (12/04/16)
Blocks	
Season	-
Career	-
Field Goals Made	
Season	5 vs. Valparaiso (12/04/16)
Career	5 vs. Valparaiso (12/04/16)
3-Point FGs Made	
Season	3, 3x, at Toledo (12/18/16)
Career	3, 3x, at Toledo (12/18/16)
Free Throws Made	
Season	4, 2x, at Michigan State (12/20/16)
Career	4, 2x, at Michigan State (12/20/16)
Minutes	
Season	25 vs. Central Michigan (11/11/16)
Career	25 vs. Central Michigan (11/11/16)

CAREER STATISTICS

SEASON	GP-GS	MIN/AVG	FG-FGA	PCT	3FG-FGA	PCT	FT-FTA	PCT	ORB	DRB	REB	AVG	PF	DQ	AST	TO	BLK	STL	PTS	AVG
2016-17	15-0	189/12.6	29-72	.403	17-45	.378	20-21	.952	9	29	38	2.5	8	0	8	10	0	4	95	6.3
TOTAL	15-0	189/12.6	29-72	.403	17-45	.378	20-21	.952	9	29	38	2.5	8	0	8	10	0	4	95	6.3



ARIKE OGUNBOWALE

GUARD | 5-8 | SOPHOMORE | MILWAUKEE, WIS. | DIVINE SAVIOR HOLY ANGELS

24

GAMES WITH ...

	Season	Career
Double Figure Points	11	33
20-Plus Points	1	2
30-Plus Points	1	1
5-Plus Rebounds	4	14
5-Plus Assists	0	0
Double-Double	0	0

NOTABLES

HONORS AND AWARDS:

- ESPNW Player of the Week (November 21, 2016)
- ACC Player of the Week (November 14, 2016)
- 2016 Preseason WNIT MVP
- 2016 ACC All-Freshman Team
- 2016 ACC All-Academic Team

2016-17 SEASON:

- Earned Preseason WNIT Most Valuable Player honors after scoring a team-high 17 points with five rebounds, four steals and three assists in the championship game versus Washington on 11/20/16.
- Was named ESPNW Player of the Week on 11/21/16 after recording double-figures in each game of the Preseason WNIT. She averaged 19.5 points per game in the tournament.
- Scored a career-high 30 points in the season opener on 11/11/16 versus Central Michigan and was named Atlantic Coast Conference Player of the Week for that week.

2015-16 SEASON:

- Appeared in all 35 games, averaging 19.3 minutes per game.
- Ranked 26th in the ACC in scoring with 11.4 points per game.

2016-17 GAME-BY-GAME

Opponent	Min	FG-A	3FG-A	FT-A	O-D-R	PF	A	TO	B	S	Pts
11/11 ·Central Mich.	23	12-13	5-5	1-1	1-2-3	1	2	1	0	2	30
11/14 ·Fordham	25	5-11	0-0	3-3	1-3-4	2	0	2	0	1	13
11/17 ·Green Bay	34	7-16	2-4	2-2	1-1-2	2	0	2	0	3	18
11/20 ·Washington	33	8-17	1-3	0-2	0-5-5	0	3	2	0	4	17
11/22 ·vs. UL-Lafayette	19	4-12	0-3	1-4	1-3-4	3	2	2	0	2	9
11/26 ·TCU	29	6-17	5-6	2-2	4-3-7	0	2	1	1	0	19
11/30 ·at Iowa	33	5-13	1-2	5-6	1-1-2	3	1	4	0	1	16
12/04 ·Valparaiso	18	8-12	1-4	1-1	3-1-4	0	4	0	0	3	18
12/07 ·Connecticut	32	4-14	0-4	1-2	1-1-2	3	1	2	0	1	9
12/10 ·at DePaul	29	7-15	1-4	2-4	2-4-6	3	1	0	1	2	17
12/18 ·at Toledo	26	2-11	0-4	2-4	0-1-1	3	2	3	0	3	6
12/20 at Michigan St.	33	5-13	0-2	1-2	0-6-6	4	3	1	0	0	11
12/27 ·at Chattanooga	29	5-12	1-1	2-2	0-3-3	1	0	0	1	1	13
12/29 ·at NC State*	22	3-9	0-1	0-0	2-2-4	2	3	2	0	0	6
01/02 ·at Ga. Tech*	32	8-18	2-6	0-0	1-3-4	2	0	2	0	1	18
01/05 Wake Forest*											
01/08 at Miami*											
01/12 Pittsburgh*											
01/16 at Tennessee											
01/19 at BC*											
01/22 at UNC*											
01/26 Duke*											
01/29 Virginia*											
02/02 at Va. Tech*											
02/06 Louisville*											
02/12 Georgia Tech*											
02/16 at Clemson*											
02/19 at Syracuse*											
02/23 BC*											
02/26 Florida State*											

CAREER AND SEASON HIGHS

Points	
Season	30 vs. Central Michigan (11/11/16)
Career	30 vs. Central Michigan (11/11/16)
Rebounds	
Season	7 vs. TCU (11/26/16)
Career	9 at Pittsburgh (01/03/16)
Assists	
Season	4 vs. Valparaiso (12/04/16)
Career	4, 3x, vs. Valparaiso (12/04/16)
Steals	
Season	4 vs. Washington (11/20/16)
Career	3 vs. Green Bay (11/17/16)
Blocks	
Season	1, 3x, at Chattanooga (12/27/16)
Career	1, 3x, at Chattanooga (12/27/16)
Field Goals Made	
Season	12 vs. Central Michigan (11/11/16)
Career	12 vs. Central Michigan (11/11/16)
3-Point FGs Made	
Season	5, 2x, vs. TCU (11/26/16)
Career	5, 2x, vs. TCU (11/26/16)
Free Throws Made	
Season	5 at Iowa (11/30/16)
Career	8 vs. Miami (02/14/16)
Minutes	
Season	34 vs. Green Bay (11/17/16)
Career	34 vs. Green Bay (11/17/16)

CAREER STATISTICS

SEASON	GP-GS	MIN/AVG	FG-FGA	PCT	3FG-FGA	PCT	FT-FTA	PCT	ORB	DRB	REB	AVG	PF	DQ	AST	TO	BLK	STL	PTS	AVG
2015-16	35-0	676/19.3	143-330	.433	18-46	.391	94-131	.718	48	71	119	3.4	60	0	41	69	3	22	398	11.4
2016-17	15-14	417/27.8	89-203	.438	19-49	.388	23-35	.657	18	39	57	3.8	29	0	24	24	3	24	220	14.7
TOTAL	50-14	1,093/21.9	232-533	.435	37-95	.389	117-166	.705	66	110	176	3.5	89	0	65	93	6	46	618	12.4



KATHRYN WESTBELD

FORWARD | 6-2 | JUNIOR | KETTERING, OHIO | KETTERING FAIRMONT

33

GAMES WITH ...

	Season	Career
Double Figure Points	7	29
20-Plus Points	0	0
30-Plus Points	0	0
10-Plus Rebounds	2	6
10-Plus Assists	0	0
Double-Double	1	3

NOTABLES

2016-17 SEASON:

- Recorded her first double-double of the season and the third of her career with 12 points and 11 rebounds at Michigan State on 12/20/16.
- Tied a career high in assists (5) on 12/18/16 at Toledo.
- Has started all 15 games and scored in double figures seven times.
- Scored a season-high 14 points with eight rebounds and three assists in Notre Dame's win over Washington on 11/20/16.

2015-16 SEASON:

- Started 33 games and averaged 7.9 points, 5.6 rebounds and 2.0 assists per game with a .528 field-goal percentage, ranking 11th in the ACC.

2016-17 GAME-BY-GAME

Opponent	Min	FG-A	3FG-A	FT-A	O-D-R	PF	A	TO	B	S	Pts
11/11 ·Central Mich.	15	3-4	0-1	0-0	0-4-4	2	1	1	0	0	6
11/14 ·Fordham	24	3-10	0-0	0-0	4-7-11	0	1	2	1	0	6
11/17 ·Green Bay	26	4-6	0-1	2-4	3-5-8	2	1	0	0	2	10
11/20 ·Washington	36	6-12	2-2	0-0	1-7-8	3	3	2	0	3	14
11/22 ·vs. UL-Lafayette	24	5-6	0-0	0-0	2-5-7	1	2	1	2	2	10
11/26 ·TCU	24	5-7	0-1	2-2	3-4-7	3	1	1	2	4	12
11/30 ·at Iowa	23	4-5	0-0	0-1	1-2-3	4	0	2	0	0	8
12/04 ·Valparaiso	21	5-9	0-1	0-0	1-3-4	0	3	4	0	2	10
12/07 ·Connecticut	23	4-7	0-1	0-0	2-1-3	3	0	7	0	2	8
12/10 ·at DePaul	17	2-3	0-0	0-0	2-5-7	2	2	2	0	0	4
12/18 ·at Toledo	27	2-5	0-0	4-5	5-2-7	3	5	2	0	2	8
12/20 ·at Michigan St.	33	6-9	0-0	0-0	4-7-11	0	2	0	1	0	12
12/27 ·at Chattanooga	23	4-8	0-0	3-4	3-5-8	0	4	2	2	0	11
12/29 ·at NC State*	26	4-5	0-0	0-0	2-4-6	2	1	0	0	1	8
01/02 ·at Ga. Tech*	16	1-3	0-0	0-0	2-1-3	1	1	3	0	0	2
01/05 Wake Forest*											
01/08 at Miami*											
01/12 Pittsburgh*											
01/16 at Tennessee											
01/19 at BC*											
01/22 at UNC*											
01/26 Duke*											
01/29 Virginia*											
02/02 at Va. Tech*											
02/06 Louisville*											
02/12 Georgia Tech*											
02/16 at Clemson*											
02/19 at Syracuse*											
02/23 BC*											
02/26 Florida State*											

CAREER AND SEASON HIGHS

Points	
Season	14 vs. Washington (11/20/16)
Career	17 at Virginia Tech (01/29/15)
Rebounds	
Season	11, 2x, at MSU (12/20/16)
Career	14 at TCU (12/12/15)
Assists	
Season	5 at Toledo (12/18/16)
Career	5, 2x, at Toledo (12/18/16)
Steals	
Season	4 vs. TCU (11/26/16)
Career	4, 3x, vs. TCU (11/26/16)
Blocks	
Season	2, 3x, at Chattanooga (12/27/16)
Career	2, 4x, at Chattanooga (12/27/16)
Field Goals Made	
Season	6, 2x, at Michigan State (12/20/16)
Career	8 at Virginia Tech (01/29/15)
3-Point FGs Made	
Season	2 vs. Washington (11/20/16)
Career	2, 2x, vs. Washington (11/20/16)
Free Throws Made	
Season	4 at Toledo (12/18/16)
Career	6 vs. Quinnipiac (11/25/14)
Minutes	
Season	36 vs. Washington (11/20/16)
Career	38 vs. UCLA (11/28/15)

CAREER STATISTICS

SEASON	GP-GS	MIN/AVG	FG-FGA	PCT	3FG-FGA	PCT	FT-FTA	PCT	ORB	DRB	REB	AVG	PF	DQ	AST	TO	BLK	STL	PTS	AVG
2014-15	39-0	676/17.3	100-190	.526	7-17	.412	54-76	.711	62	109	171	4.4	73	1	64	67	10	40	261	6.7
2015-16	33-33	682/20.7	114-216	.528	1-7	.143	32-42	.762	65	119	184	5.6	54	0	66	50	12	22	261	7.9
2016-17	15-15	358/23.9	58-99	.586	2-7	.286	11-17	.647	35	62	97	6.5	26	0	27	29	8	18	129	8.6
TOTAL	87-48	1,716/19.7	272-505	.539	10-31	.323	97-135	.719	162	290	452	5.2	153	1	157	146	30	80	651	7.5



DIAMOND THOMPSON

CENTER | 6-5 | SENIOR | WHEATON, ILL. | WHEATON WARRENVILLE SOUTH

35

GAMES WITH ...

	Season	Career
5-Point Games	1	2
Double Figure Points	0	0
20-Plus Points	0	0
5-Plus Rebounds	0	1
5-Plus Assists	0	0
Double-Double	0	0

NOTABLES

2016-17 SEASON:

- Tied her career high with six points against Central Michigan in the team's season-opener.

2015-16 SEASON:

- Appeared in a career-high 23 games, averaging 1.1 points and 0.9 rebounds per game.

2016-17 GAME-BY-GAME

Opponent	Min	FG-A	3FG-A	FT-A	O-D-R	PF	A	TO	B	S	Pts
11/11 Central Mich.	11	2-4	0-0	2-5	0-2-2	4	0	3	0	0	6
11/14 Fordham	3	0-0	0-0	0-0	0-0-0	0	0	0	0	0	0
11/17 Green Bay					DNP						
11/20 Washington					DNP						
11/22 vs. UL-Lafayette	3	0-0	0-0	0-0	0-0-0	0	0	0	0	0	0
11/26 TCU	4	0-2	0-0	0-0	0-0-0	0	1	0	0	0	0
11/30 at Iowa					DNP						
12/04 Valparaiso					DNP						
12/07 Connecticut					DNP						
12/10 at DePaul					DNP						
12/18 at Toledo					DNP						
12/20 at Michigan St.	1	0-0	0-0	0-0	0-1-1	0	0	0	0	0	0
12/27 at Chattanooga	2	0-0	0-0	0-0	0-0-0	1	0	0	0	0	0
12/29 at NC State*					DNP						
01/02 at Ga. Tech*					DNP						
01/05 Wake Forest*											
01/08 at Miami*											
01/12 Pittsburgh*											
01/16 at Tennessee											
01/19 at BC*											
01/22 at UNC*											
01/26 Duke*											
01/29 Virginia*											
02/02 at Va. Tech*											
02/06 Louisville*											
02/12 Georgia Tech*											
02/16 at Clemson*											
02/19 at Syracuse*											
02/23 BC*											
02/26 Florida State*											

CAREER AND SEASON HIGHS

Points	
Season	6 vs. Central Michigan (11/11/16)
Career	6, 3x, vs. Central Mich. (11/11/16)
Rebounds	
Season	2 vs. Central Michigan (11/11/16)
Career	5 vs. Denver (11/27/15)
Assists	
Season	1 vs. TCU (11/26/16)
Career	1, 3x, vs. TCU (11/26/16)
Steals	
Season	-
Career	1, 2x, vs. NC State (02/04/16)
Blocks	
Season	-
Career	2 vs. Clemson (02/25/16)
Field Goals Made	
Season	2 vs. Central Michigan (11/11/16)
Career	2, 4x, vs. Central Mich. (11/11/16)
3-Point FGs Made	
Season	-
Career	-
Free Throws Made	
Season	2 vs. Central Michigan (11/11/16)
Career	2, 6x, vs. Central Mich. (11/11/16)
Minutes	
Season	11 vs. Central Michigan (11/11/16)
Career	15 vs. Denver (11/27/15)

CAREER STATISTICS

SEASON	GP-GS	MIN/AVG	FG-FGA	PCT	3FG-FGA	PCT	FT-FTA	PCT	ORB	DRB	REB	AVG	PF	DQ	AST	TO	BLK	STL	PTS	AVG
2013-14	16-0	43/2.7	4-6	.667	0-0	.000	0-0	.000	6	7	13	0.81	10	0	0	6	3	0	8	0.5
2014-15	17-0	58/3.4	3-8	.375	0-0	.000	9-15	.600	3	5	8	0.47	8	0	2	3	4	1	15	0.9
2015-16	23-0	75/3.3	9-9	1.000	0-0	.000	8-14	.571	6	14	20	0.9	24	0	0	9	5	1	26	1.1
2016-17	6-0	24/4.0	2-6	.333	0-0	.000	2-5	.400	0	3	3	0.5	5	0	1	3	0	0	6	1.0
TOTAL	61-0	200/3.3	18-29	.621	0-0	.000	19-34	.558	15	29	44	0.7	47	0	3	21	12	2	55	0.9

Notre Dame Combined Team Statistics (as of Jan 02, 2017)
All games

RECORD:	OVERALL	HOME	AWAY	NEUTRAL
ALL GAMES	13-2	6-1	6-1	1-0
CONFERENCE	1-1	0-0	1-1	0-0
NON-CONFERENCE	12-1	6-1	5-0	1-0

##	Player	gp-gs	min	avg	Total		3-Point		F-Throw		Rebounds			pf	dq	a	to	blk	stl	pts	avg	
					fg-fga	fg%	3fg-fga	3fg%	ft-fa	ft%	off	def	tot									avg
11	Brianna Turner	15-15	414	27.6	91-157	.580	0-0	.000	41-72	.569	42	65	107	7.1	31	1	19	27	32	10	223	14.9
24	Arike Ogunbowale	15-14	417	27.8	89-203	.438	19-49	.388	23-35	.657	18	39	57	3.8	29	0	24	24	3	24	220	14.7
03	Marina Mabrey	15-14	358	23.9	68-149	.456	23-64	.359	29-33	.879	24	26	50	3.3	29	0	44	27	8	19	188	12.5
15	Lindsay Allen	15-15	499	33.3	59-116	.509	3-8	.375	23-38	.605	14	70	84	5.6	30	0	109	31	1	35	144	9.6
33	Kathryn Westbeld	15-15	358	23.9	58-99	.586	2-7	.286	11-17	.647	35	62	97	6.5	26	0	27	29	8	18	129	8.6
05	Jackie Young	11-0	205	18.6	27-55	.491	7-13	.538	10-14	.714	11	26	37	3.4	23	0	12	14	4	12	71	6.5
22	Erin Boley	15-0	189	12.6	29-72	.403	17-45	.378	20-21	.952	9	29	38	2.5	8	0	8	10	0	4	95	6.3
21	Kristina Nelson	15-0	186	12.4	26-67	.388	0-0	.000	10-17	.588	16	38	54	3.6	36	2	15	28	12	7	62	4.1
14	Mychal Johnson	15-2	318	21.2	15-35	.429	7-19	.368	7-7	1.000	2	23	25	1.7	24	0	22	15	2	22	44	2.9
35	Diamond Thompson	6-0	24	4.0	2-6	.333	0-0	.000	2-5	.400	0	3	3	0.5	5	0	1	3	0	0	6	1.0
20	Ali Patberg	6-0	30	5.0	0-0	.000	0-0	.000	0-0	.000	0	6	6	1.0	4	0	3	0	0	1	0	0.0
Team											34	36	70				4					
Total.....		15	2998		464-959	.484	78-205	.380	176-259	.680	205	423	628	41.9	245	3	284	212	70	152	1182	78.8
Opponents.....		15	3001		322-868	.371	93-298	.312	123-194	.634	156	326	482	32.1	288	-	204	275	36	95	860	57.3

TEAM STATISTICS	ND	OPP	Date	Opponent	Score	Att.
SCORING	1182	860	11/11/16	CENTRAL MICHIGAN	w 107-47	8454
Points per game	78.8	57.3	11/14/16	FORDHAM	w 67-36	7540
Scoring margin	+21.5	-	11/17/16	GREEN BAY	w 71-67	7817
FIELD GOALS-ATT	464-959	322-868	11/20/16	WASHINGTON	w 71-60	8106
Field goal pct	.484	.371	11/22/16	vs UL-Lafayette	w 91-51	767
3 POINT FG-ATT	78-205	93-298	11/26/16	TCU	w 92-59	8174
3-point FG pct	.380	.312	11/30/16	at Iowa	w 73-58	3809
3-pt FG made per game	5.2	6.2	12/4/16	VALPARAISO	w 114-54	8132
FREE THROWS-ATT	176-259	123-194	12/07/16	UCONN	L 61-72	9149
Free throw pct	.680	.634	12/10/16	at DePaul	w 75-61	3001
F-Throws made per game	11.7	8.2	12/18/16	at Toledo	w 85-68	5697
REBOUNDS	628	482	12/20/16	at Michigan State	w 79-61	7924
Rebounds per game	41.9	32.1	12/27/16	at Chattanooga	w 79-58	3388
Rebounding margin	+9.7	-	* 12/29/16	at NC State	L 62-70	3677
ASSISTS	284	204	* 1/2/17	at Georgia Tech	w 55-38	1641
Assists per game	18.9	13.6				
TURNOVERS	212	275				
Turnovers per game	14.1	18.3				
Turnover margin	+4.2	-				
Assist/turnover ratio	1.3	0.7				
STEALS	152	95				
Steals per game	10.1	6.3				
BLOCKS	70	36				
Blocks per game	4.7	2.4				
ATTENDANCE	57372	29904				
Home games-Avg/Game	7-8196	7-4162				
Neutral site-Avg/Game	-	1-767				

Score by Periods	1st	2nd	3rd	4th	Totals
Notre Dame	331	289	275	287	1182
Opponents	203	205	233	219	860

* - Conference game

Notre Dame Category Leaders (as of Jan 02, 2017)
All games

Points	G	Pts	Pts/G	Scoring Average	G	Pts	Avg/G
Brianna Turner	15	223	14.9	Brianna Turner	15	223	14.9
Arike Ogunbowale	15	220	14.7	Arike Ogunbowale	15	220	14.7
Marina Mabrey	15	188	12.5	Marina Mabrey	15	188	12.5
Lindsay Allen	15	144	9.6	Lindsay Allen	15	144	9.6
Kathryn Westbeld	15	129	8.6	Kathryn Westbeld	15	129	8.6
Erin Boley	15	95	6.3	Jackie Young	11	71	6.5
Jackie Young	11	71	6.5	Erin Boley	15	95	6.3
Kristina Nelson	15	62	4.1	Kristina Nelson	15	62	4.1
Mychal Johnson	15	44	2.9	Mychal Johnson	15	44	2.9
Diamond Thompson	6	6	1.0	Diamond Thompson	6	6	1.0
				Ali Patberg	6	0	0.0

FG Percentage	FG	Att	Pct	Field Goal Attempts	G	Att	Att/G
Kathryn Westbeld	58	99	.586	Arike Ogunbowale	15	203	13.5
Brianna Turner	91	157	.580	Brianna Turner	15	157	10.5
Lindsay Allen	59	116	.509	Marina Mabrey	15	149	9.9
Jackie Young	27	55	.491	Lindsay Allen	15	116	7.7
Marina Mabrey	68	149	.456	Kathryn Westbeld	15	99	6.6
Arike Ogunbowale	89	203	.438				
Mychal Johnson	15	35	.429	Field Goals Made	G	Made	Made/G
Erin Boley	29	72	.403	Brianna Turner	15	91	6.1
Kristina Nelson	26	67	.388	Arike Ogunbowale	15	89	5.9
Diamond Thompson	2	6	.333	Marina Mabrey	15	68	4.5
				Lindsay Allen	15	59	3.9
				Kathryn Westbeld	15	58	3.9

3-Point Percentage	3FG	Att	Pct	3-Point FG Attempts	G	Att	Att/G
Jackie Young	7	13	.538	Marina Mabrey	15	64	4.3
Arike Ogunbowale	19	49	.388	Arike Ogunbowale	15	49	3.3
Erin Boley	17	45	.378	Erin Boley	15	45	3.0
Lindsay Allen	3	8	.375	Mychal Johnson	15	19	1.3
Mychal Johnson	7	19	.368	Jackie Young	11	13	1.2
Marina Mabrey	23	64	.359				
Kathryn Westbeld	2	7	.286	3-Point FG Made	G	Made	Made/G
				Marina Mabrey	15	23	1.5
				Arike Ogunbowale	15	19	1.3
				Erin Boley	15	17	1.1
				Jackie Young	11	7	0.6
				Mychal Johnson	15	7	0.5

Free Throw Percent	FG	Att	Pct	Free Throw Attempts	G	Att	Att/G
Mychal Johnson	7	7	1.000	Brianna Turner	15	72	4.8
Erin Boley	20	21	.952	Lindsay Allen	15	38	2.5
Marina Mabrey	29	33	.879	Arike Ogunbowale	15	35	2.3
Jackie Young	10	14	.714	Marina Mabrey	15	33	2.2
Arike Ogunbowale	23	35	.657	Erin Boley	15	21	1.4
Kathryn Westbeld	11	17	.647				
Lindsay Allen	23	38	.605	Free Throws Made	G	Made	Made/G
Kristina Nelson	10	17	.588	Brianna Turner	15	41	2.7
Brianna Turner	41	72	.569	Marina Mabrey	15	29	1.9
Diamond Thompson	2	5	.400	Arike Ogunbowale	15	23	1.5
				Lindsay Allen	15	23	1.5
				Erin Boley	15	20	1.3

Notre Dame Category Leaders (as of Jan 02, 2017)
All games

<u>Rebounds</u>	<u>G</u>	<u>Reb</u>	<u>Reb/G</u>
Brianna Turner	15	107	7.1
Kathryn Westbeld	15	97	6.5
Lindsay Allen	15	84	5.6
Arike Ogunbowale	15	57	3.8
Kristina Nelson	15	54	3.6

<u>Assists</u>	<u>G</u>	<u>No.</u>	<u>Ast/G</u>
Lindsay Allen	15	109	7.3
Marina Mabrey	15	44	2.9
Kathryn Westbeld	15	27	1.8
Arike Ogunbowale	15	24	1.6
Mychal Johnson	15	22	1.5

<u>Rebound Average</u>	<u>G</u>	<u>Reb</u>	<u>Avg/G</u>
Brianna Turner	15	107	7.1
Kathryn Westbeld	15	97	6.5
Lindsay Allen	15	84	5.6
Arike Ogunbowale	15	57	3.8
Kristina Nelson	15	54	3.6

<u>Steals</u>	<u>G</u>	<u>No.</u>	<u>Stl/G</u>
Lindsay Allen	15	35	2.3
Arike Ogunbowale	15	24	1.6
Mychal Johnson	15	22	1.5
Marina Mabrey	15	19	1.3
Kathryn Westbeld	15	18	1.2

<u>Offensive Rebounds</u>	<u>G</u>	<u>No.</u>	<u>Avg/G</u>
Brianna Turner	15	42	2.8
Kathryn Westbeld	15	35	2.3
Marina Mabrey	15	24	1.6
Arike Ogunbowale	15	18	1.2
Kristina Nelson	15	16	1.1

<u>Blocked Shots</u>	<u>G</u>	<u>No.</u>	<u>Blk/G</u>
Brianna Turner	15	32	2.1
Kristina Nelson	15	12	0.8
Kathryn Westbeld	15	8	0.5
Marina Mabrey	15	8	0.5
Jackie Young	11	4	0.4

<u>Defensive Rebounds</u>	<u>G</u>	<u>No.</u>	<u>Avg/G</u>
Lindsay Allen	15	70	4.7
Brianna Turner	15	65	4.3
Kathryn Westbeld	15	62	4.1
Arike Ogunbowale	15	39	2.6
Kristina Nelson	15	38	2.5

<u>Minutes</u>	<u>G</u>	<u>No.</u>	<u>Min/G</u>
Lindsay Allen	15	499	33.3
Arike Ogunbowale	15	417	27.8
Brianna Turner	15	414	27.6
Marina Mabrey	15	358	23.9
Kathryn Westbeld	15	358	23.9

<u>Fouls</u>	<u>G</u>	<u>No.</u>	<u>Per/G</u>
Kristina Nelson	15	36	2.4
Brianna Turner	15	31	2.1
Lindsay Allen	15	30	2.0
Arike Ogunbowale	15	29	1.9
Marina Mabrey	15	29	1.9

<u>Turnovers</u>	<u>G</u>	<u>No.</u>	<u>TO/G</u>
Lindsay Allen	15	31	2.1
Kathryn Westbeld	15	29	1.9
Kristina Nelson	15	28	1.9
Brianna Turner	15	27	1.8
Marina Mabrey	15	27	1.8

<u>Foulsouts</u>	<u>G</u>	<u>No.</u>
Kristina Nelson	15	2
Brianna Turner	15	1

Notre Dame Team Game-by-Game Comparison (as of Jan 02, 2017)
All games

Opponent	1st	2nd	Score	Mar	Total FG	FG Pct	3-Pointers	3FG Pct	Free Throws	FT Pct	Rebounds	A
CENTRAL MICHIGAN	56/20	51/27	107-47	+60	40-65/17-63	.615/.270	12-22/7-33	.545/.212	15-21/6-12	.714/.500	45/33 +12	2
FORDHAM	34/20	33/16	67-36	+31	25-59/12-52	.424/.231	1-8/2-19	.125/.105	16-22/10-15	.727/.667	46/31 +15	1
GREEN BAY	41/30	30/37	71-67	+4	23-64/25-56	.359/.446	5-13/12-25	.385/.480	20-26/5-6	.769/.833	41/34 +7	1
WASHINGTON	39/22	32/38	71-60	+11	28-67/21-57	.418/.368	4-11/7-22	.364/.318	11-20/11-14	.550/.786	46/34 +12	1
UL-Lafayette	42/20	49/31	91-51	+40	39-68/19-61	.574/.311	5-16/6-18	.313/.333	8-16/7-15	.500/.467	60/20 +40	2
TCU	37/34	55/25	92-59	+33	33-71/21-48	.465/.438	11-20/6-11	.550/.545	15-17/11-14	.882/.786	45/21 +24	2
Iowa	41/33	32/25	73-58	+15	30-67/24-53	.448/.453	4-11/4-19	.364/.211	9-13/6-16	.692/.375	34/40 (6)	1
VALPARAISO	72/23	42/31	114-54	+60	48-75/22-58	.640/.379	10-22/9-26	.455/.346	8-10/1-1	.800/1000	38/25 +13	2
UCONN	34/34	27/38	61-72	(11)	27-63/26-56	.429/.464	3-14/1-9	.214/.111	4-8/19-20	.500/.950	32/35 (3)	1
DePaul	33/27	42/34	75-61	+14	27-61/24-66	.443/.364	4-12/5-23	.333/.217	17-22/8-16	.773/.500	48/35 +13	1
Toledo	44/32	41/36	85-68	+17	32-60/26-59	.533/.441	5-12/8-20	.417/.400	16-25/8-12	.640/.667	27/40 (13)	2
Michigan State	41/33	38/28	79-61	+18	31-63/24-64	.492/.375	3-9/8-23	.333/.348	14-18/5-8	.778/.625	43/33 +10	2
Chattanooga	44/29	35/29	79-58	+21	32-57/23-60	.561/.383	1-4/9-23	.250/.391	14-20/3-10	.700/.300	46/24 +22	2
NC State	28/34	34/36	62-70	(8)	26-62/24-57	.419/.421	6-15/8-19	.400/.421	4-11/14-15	.364/.933	37/37 -	1
Georgia Tech	34/17	21/21	55-38	+17	23-57/14-58	.404/.241	4-16/1-8	.250/.125	5-10/9-20	.500/.450	40/40 -	1

Note: Game totals are displayed in the format TEAM/OPPONENT for each category

Notre Dame Points-Rebounds-Assists (as of Jan 02, 2017)
All games

Opponent	Date	Score		03	05	11	14	15	20	21
				MABREY,MAR	YOUNG,JACK	TURNER,BRI	JOHNSON,MY	ALLEN,LIND	PATBERG,AL	NELSON,KRI
CENTRAL MICHIGAN	11/11/16	107-47	w	17-3-5	DNP	12-3-1	7-2-4	13-5-8	0-3-3	8-9-2
FORDHAM	11/14/16	67-36	w	7-2-0	DNP	10-8-0	2-1-4	13-6-5	0-1-0	9-7-1
GREEN BAY	11/17/16	71-67	w	13-4-3	3-7-1	14-4-3	5-0-0	8-5-8	DNP	0-1-0
WASHINGTON	11/20/16	71-60	w	4-2-2	8-2-0	10-12-0	0-1-0	13-5-4	DNP	5-6-3
vs UL-Lafayette	11/22/16	91-51	w	27-3-3	13-6-4	16-12-1	2-4-1	2-6-9	DNP	5-5-2
TCU	11/26/16	92-59	w	17-5-2	12-5-3	18-3-1	0-1-0	2-4-12	DNP	2-2-1
at Iowa	11/30/16	73-58	w	9-4-2	5-3-0	15-4-1	0-2-0	11-6-8	DNP	4-3-0
VALPARAISO	12/4/16	114-54	w	16-1-4	20-5-3	13-4-1	6-6-4	8-4-6	DNP	8-6-3
UCONN	12/07/16	61-72	L	2-2-1	7-4-0	16-12-3	3-1-0	11-5-8	DNP	2-2-1
at DePaul	12/10/16	75-61	w	7-6-4	DNP	14-11-2	10-1-1	14-9-3	DNP	2-4-0
at Toledo	12/18/16	85-68	w	19-6-3	DNP	26-8-2	2-0-3	10-2-8	0-1-0	2-0-1
at Michigan State	12/20/16	79-61	w	19-5-5	0-0-0	19-7-1	3-0-5	9-5-6	0-0-0	0-0-0
at Chattanooga	12/27/16	79-58	w	2-1-2	3-3-1	24-5-1	0-3-0	11-11-12	0-1-0	8-3-0
at NC State	12/29/16	62-70	L	22-5-4	0-1-0	7-3-2	2-2-0	12-4-4	DNP	2-1-0
at Georgia Tech	1/2/17	55-38	w	7-1-4	0-1-0	9-11-0	2-1-0	7-7-8	0-0-0	5-5-1

Opponent	Date	Score		22	24	33	35
				BOLEY,ERIN	OGUNBOWAL	WESTBELD,K	THOMPSON,D
CENTRAL MICHIGAN	11/11/16	107-47	w	8-2-3	30-3-2	6-4-1	6-2-0
FORDHAM	11/14/16	67-36	w	7-1-0	13-4-0	6-11-1	0-0-0
GREEN BAY	11/17/16	71-67	w	0-3-0	18-2-0	10-8-1	DNP
WASHINGTON	11/20/16	71-60	w	0-0-0	17-5-3	14-8-3	DNP
vs UL-Lafayette	11/22/16	91-51	w	7-8-1	9-4-2	10-7-2	0-0-0
TCU	11/26/16	92-59	w	10-3-0	19-7-2	12-7-1	0-0-1
at Iowa	11/30/16	73-58	w	5-4-0	16-2-1	8-3-0	DNP
VALPARAISO	12/4/16	114-54	w	15-2-1	18-4-4	10-4-3	DNP
UCONN	12/07/16	61-72	L	3-0-0	9-2-1	8-3-0	DNP
at DePaul	12/10/16	75-61	w	7-2-0	17-6-1	4-7-2	DNP
at Toledo	12/18/16	85-68	w	12-1-1	6-1-2	8-7-5	DNP
at Michigan State	12/20/16	79-61	w	6-4-0	11-6-3	12-11-2	0-1-0
at Chattanooga	12/27/16	79-58	w	7-6-0	13-3-0	11-8-4	0-0-0
at NC State	12/29/16	62-70	L	3-1-1	6-4-3	8-6-1	DNP
at Georgia Tech	1/2/17	55-38	w	5-1-1	18-4-0	2-3-1	DNP

Notre Dame Game-by-Game Highs (as of Jan 02, 2017)
All games

Opponent	Date	Score	Points	Rebounds	Assists	Steals	Blocked shots
CENTRAL MICHIGAN	11/11/16	107-47	30-Arike Ogunbowale	9-Kristina Nelson	8-Lindsay Allen	4-Mychal Johnson Lindsay Allen	1-Mychal Johnson Kristina Nelson Marina Mabrey
FORDHAM	11/14/16	67-36	13-Lindsay Allen Arike Ogunbowale	11-Kathryn Westbeld	5-Lindsay Allen	2-Lindsay Allen	1-Kristina Nelson Brianna Turner Kathryn Westbeld
GREEN BAY	11/17/16	71-67	18-Arike Ogunbowale	8-Kathryn Westbeld	8-Lindsay Allen	3-Arike Ogunbowale Lindsay Allen	2-Brianna Turner
WASHINGTON	11/20/16	71-60	17-Arike Ogunbowale	12-Brianna Turner	4-Lindsay Allen	4-Marina Mabrey Arike Ogunbowale	1-Brianna Turner Jackie Young
vs UL-Lafayette	11/22/16	91-51	27-Marina Mabrey	12-Brianna Turner	9-Lindsay Allen	3-Mychal Johnson Marina Mabrey	3-Kristina Nelson
TCU	11/26/16	92-59	19-Arike Ogunbowale	7-Kathryn Westbeld Arike Ogunbowale	12-Lindsay Allen	4-Kathryn Westbeld	2-Kathryn Westbeld
at Iowa	11/30/16	73-58	16-Arike Ogunbowale	6-Lindsay Allen	8-Lindsay Allen	5-Lindsay Allen Marina Mabrey	1-Lindsay Allen Marina Mabrey
VALPARAISO	12/4/16	114-54	20-Jackie Young	6-Kristina Nelson Mychal Johnson	6-Lindsay Allen	6-Jackie Young	4-Kristina Nelson
UCONN	12/07/16	61-72	16-Brianna Turner	12-Brianna Turner	8-Lindsay Allen	4-Jackie Young	2-Brianna Turner
at DePaul	12/10/16	75-61	17-Arike Ogunbowale	11-Brianna Turner	4-Marina Mabrey	2-Marina Mabrey Arike Ogunbowale	2-Brianna Turner
at Toledo	12/18/16	85-68	26-Brianna Turner	8-Brianna Turner	8-Lindsay Allen	4-Lindsay Allen	2-Brianna Turner Marina Mabrey
at Michigan State	12/20/16	79-61	19-Brianna Turner Marina Mabrey	11-Kathryn Westbeld	6-Lindsay Allen	1-Marina Mabrey Lindsay Allen	5-Brianna Turner
at Chattanooga	12/27/16	79-58	24-Brianna Turner	11-Lindsay Allen	12-Lindsay Allen	1-Mychal Johnson Arike Ogunbowale Marina Mabrey Lindsay Allen	6-Brianna Turner
at NC State	12/29/16	62-70	22-Marina Mabrey	6-Kathryn Westbeld	4-Marina Mabrey Lindsay Allen	3-Mychal Johnson	1-Marina Mabrey Brianna Turner
at Georgia Tech	1/2/17	55-38	18-Arike Ogunbowale	11-Brianna Turner	8-Lindsay Allen	4-Brianna Turner Lindsay Allen	6-Brianna Turner

Notre Dame Team High/Low Analysis (as of Jan 02, 2017)
All games

Notre Dame - TEAM GAME HIGHS

POINTS	114		VALPARAISO (12/4/16)
	107		CENTRAL MICHIGAN (11/11/16)
	92		TCU (11/26/16)
	91		vs UL-Lafayette (11/22/16)
	85		at Toledo (12/18/16)
FIELD GOALS MADE	48		VALPARAISO (12/4/16)
	40		CENTRAL MICHIGAN (11/11/16)
FIELD GOAL ATTEMPTS	75		VALPARAISO (12/4/16)
	71		TCU (11/26/16)
FIELD GOAL PERCENTAGE	.640	(48-75)	VALPARAISO (12/4/16)
	.615	(40-65)	CENTRAL MICHIGAN (11/11/16)
3 PT FIELD GOALS MADE	12		CENTRAL MICHIGAN (11/11/16)
	11		TCU (11/26/16)
3 PT FG ATTEMPTS	22		VALPARAISO (12/4/16)
	22		CENTRAL MICHIGAN (11/11/16)
3 PT FG PERCENTAGE	.550	(11-20)	TCU (11/26/16)
	.545	(12-22)	CENTRAL MICHIGAN (11/11/16)
FREE THROWS MADE	20		GREEN BAY (11/17/16)
	17		at DePaul (12/10/16)
FREE THROW ATTEMPTS	26		GREEN BAY (11/17/16)
	25		at Toledo (12/18/16)
FREE THROW PERCENTAGE	.882	(15-17)	TCU (11/26/16)
	.800	(8-10)	VALPARAISO (12/4/16)
REBOUNDS	60		vs UL-Lafayette (11/22/16)
	48		at DePaul (12/10/16)
ASSISTS	29		VALPARAISO (12/4/16)
	29		CENTRAL MICHIGAN (11/11/16)
STEALS	19		VALPARAISO (12/4/16)
	16		at Toledo (12/18/16)
BLOCKED SHOTS	9		at Chattanooga (12/27/16)
	8		vs UL-Lafayette (11/22/16)
TURNOVERS	21		vs UL-Lafayette (11/22/16)
	17		at Toledo (12/18/16)
FOULS	22		at Iowa (11/30/16)
	21		at NC State (12/29/16)

Notre Dame High/Low Analysis (as of Jan 02, 2017)
All games

Opponent - GAME HIGHS

POINTS	72		UCONN (12/07/16)
	70		at NC State (12/29/16)
	68		at Toledo (12/18/16)
	67		GREEN BAY (11/17/16)
	61		at Michigan State (12/20/16)
	61		at DePaul (12/10/16)
FIELD GOALS MADE	26		at Toledo (12/18/16)
	26		UCONN (12/07/16)
FIELD GOAL ATTEMPTS	66		at DePaul (12/10/16)
	64		at Michigan State (12/20/16)
FIELD GOAL PERCENTAGE	.464	(26-56)	UCONN (12/07/16)
	.453	(24-53)	at Iowa (11/30/16)
3 PT FIELD GOALS MADE	12		GREEN BAY (11/17/16)
	9		at Chattanooga (12/27/16)
	9		VALPARAISO (12/4/16)
3 PT FG ATTEMPTS	33		CENTRAL MICHIGAN (11/11/16)
	26		VALPARAISO (12/4/16)
3 PT FG PERCENTAGE	.545	(6-11)	TCU (11/26/16)
	.480	(12-25)	GREEN BAY (11/17/16)
FREE THROWS MADE	19		UCONN (12/07/16)
	14		at NC State (12/29/16)
FREE THROW ATTEMPTS	20		at Georgia Tech (1/2/17)
	20		UCONN (12/07/16)
FREE THROW PERCENTAGE	1.000	(1-1)	VALPARAISO (12/4/16)
	.950	(19-20)	UCONN (12/07/16)
REBOUNDS	40		at Georgia Tech (1/2/17)
	40		at Toledo (12/18/16)
	40		at Iowa (11/30/16)
ASSISTS	21		at Toledo (12/18/16)
	20		GREEN BAY (11/17/16)
STEALS	9		UCONN (12/07/16)
	8		at Toledo (12/18/16)
BLOCKED SHOTS	6		GREEN BAY (11/17/16)
	5		at Michigan State (12/20/16)
	5		TCU (11/26/16)
TURNOVERS	31		VALPARAISO (12/4/16)
	28		at Toledo (12/18/16)
FOULS	25		at DePaul (12/10/16)
	25		FORDHAM (11/14/16)

Notre Dame High/Low Analysis (as of Jan 02, 2017)
All games

Notre Dame - GAME LOWS

POINTS	55		at Georgia Tech (1/2/17)
	61		UCONN (12/07/16)
	62		at NC State (12/29/16)
	67		FORDHAM (11/14/16)
	71		GREEN BAY (11/17/16)
	71		WASHINGTON (11/20/16)
FIELD GOALS MADE	23		GREEN BAY (11/17/16)
	23		at Georgia Tech (1/2/17)
FIELD GOAL ATTEMPTS	57		at Chattanooga (12/27/16)
	57		at Georgia Tech (1/2/17)
FIELD GOAL PERCENTAGE	.359	(23-64)	GREEN BAY (11/17/16)
	.404	(23-57)	at Georgia Tech (1/2/17)
3 PT FIELD GOALS MADE	1		FORDHAM (11/14/16)
	1		at Chattanooga (12/27/16)
3 PT FG ATTEMPTS	4		at Chattanooga (12/27/16)
	8		FORDHAM (11/14/16)
3 PT FG PERCENTAGE	.125	(1-8)	FORDHAM (11/14/16)
	.214	(3-14)	UCONN (12/07/16)
FREE THROWS MADE	4		UCONN (12/07/16)
	4		at NC State (12/29/16)
FREE THROW ATTEMPTS	8		UCONN (12/07/16)
	10		VALPARAISO (12/4/16)
	10		at Georgia Tech (1/2/17)
FREE THROW PERCENTAGE	.364	(4-11)	at NC State (12/29/16)
	.500	(4-8)	UCONN (12/07/16)
	.500	(5-10)	at Georgia Tech (1/2/17)
	.500	(8-16)	vs UL-Lafayette (11/22/16)
REBOUNDS	27		at Toledo (12/18/16)
	32		UCONN (12/07/16)
ASSISTS	11		FORDHAM (11/14/16)
	12		at Iowa (11/30/16)
STEALS	2		at Michigan State (12/20/16)
	4		at Chattanooga (12/27/16)
	4		at NC State (12/29/16)
BLOCKED SHOTS	2		WASHINGTON (11/20/16)
	2		at Iowa (11/30/16)
	2		at NC State (12/29/16)
TURNOVERS	10		WASHINGTON (11/20/16)
	10		at Michigan State (12/20/16)
FOULS	10		VALPARAISO (12/4/16)
	12		GREEN BAY (11/17/16)

Notre Dame High/Low Analysis (as of Jan 02, 2017)
All games

Opponent - GAME LOWS

POINTS	36		FORDHAM (11/14/16)
	38		at Georgia Tech (1/2/17)
	47		CENTRAL MICHIGAN (11/11/16)
	51		vs UL-Lafayette (11/22/16)
	54		VALPARAISO (12/4/16)
FIELD GOALS MADE	12		FORDHAM (11/14/16)
	14		at Georgia Tech (1/2/17)
FIELD GOAL ATTEMPTS	48		TCU (11/26/16)
	52		FORDHAM (11/14/16)
FIELD GOAL PERCENTAGE	.231	(12-52)	FORDHAM (11/14/16)
	.241	(14-58)	at Georgia Tech (1/2/17)
3 PT FIELD GOALS MADE	1		UCONN (12/07/16)
	1		at Georgia Tech (1/2/17)
3 PT FG ATTEMPTS	8		at Georgia Tech (1/2/17)
	9		UCONN (12/07/16)
3 PT FG PERCENTAGE	.105	(2-19)	FORDHAM (11/14/16)
	.111	(1-9)	UCONN (12/07/16)
FREE THROWS MADE	1		VALPARAISO (12/4/16)
	3		at Chattanooga (12/27/16)
FREE THROW ATTEMPTS	1		VALPARAISO (12/4/16)
	6		GREEN BAY (11/17/16)
FREE THROW PERCENTAGE	.300	(3-10)	at Chattanooga (12/27/16)
	.375	(6-16)	at Iowa (11/30/16)
REBOUNDS	20		vs UL-Lafayette (11/22/16)
	21		TCU (11/26/16)
ASSISTS	5		at Georgia Tech (1/2/17)
	7		FORDHAM (11/14/16)
STEALS	2		at Michigan State (12/20/16)
	4		at DePaul (12/10/16)
BLOCKED SHOTS	0		VALPARAISO (12/4/16)
	1		CENTRAL MICHIGAN (11/11/16)
	1		FORDHAM (11/14/16)
	1		vs UL-Lafayette (11/22/16)
	1		at Iowa (11/30/16)
TURNOVERS	10		at Chattanooga (12/27/16)
	11		at DePaul (12/10/16)
	11		at Michigan State (12/20/16)
FOULS	12		VALPARAISO (12/4/16)
	14		at Iowa (11/30/16)

Notre Dame Player High/Low Analysis (as of Jan 02, 2017)
All games

Notre Dame - INDIVIDUAL GAME HIGHS

Points	30		Arike Ogunbowale vs Central Michigan (11/11/16)
	27		Marina Mabrey vs UL-Lafayette (11/22/16)
	26		Brianna Turner at Toledo (12/18/16)
	24		Brianna Turner at Chattanooga (12/27/16)
Field Goals Made	22		Marina Mabrey at NC State (12/29/16)
	12		Arike Ogunbowale vs Central Michigan (11/11/16)
Field Goal Att.	11		Brianna Turner at Toledo (12/18/16)
	18		Arike Ogunbowale at Georgia Tech (1/2/17)
	17		Arike Ogunbowale vs TCU (11/26/16)
FG Pct (min 5 made)	17		Arike Ogunbowale vs Washington (11/20/16)
	1.000	(5-5)	Lindsay Allen vs Fordham (11/14/16)
	.923	(12-13)	Arike Ogunbowale vs Central Michigan (11/11/16)
3-Point FG Made	5		Arike Ogunbowale vs TCU (11/26/16)
	5		Arike Ogunbowale vs Central Michigan (11/11/16)
3-Point FG Att.	8		Marina Mabrey at NC State (12/29/16)
	7		Marina Mabrey vs TCU (11/26/16)
	7		Marina Mabrey vs UL-Lafayette (11/22/16)
	7		Marina Mabrey vs Central Michigan (11/11/16)
3-Pt FG Pct (min 2 made)	1.000	(5-5)	Arike Ogunbowale vs Central Michigan (11/11/16)
	1.000	(2-2)	Kathryn Westbeld vs Washington (11/20/16)
Free Throws Made	6		Brianna Turner at DePaul (12/10/16)
	6		Lindsay Allen vs Green Bay (11/17/16)
	6		Marina Mabrey vs Central Michigan (11/11/16)
Free Throw Att.	8		Brianna Turner at Chattanooga (12/27/16)
	8		Brianna Turner at Michigan State (12/20/16)
	8		Lindsay Allen vs Green Bay (11/17/16)
FT Pct (min 3 made)	1.000	(4-4)	Erin Boley at Michigan State (12/20/16)
	1.000	(4-4)	Marina Mabrey vs Green Bay (11/17/16)
	1.000	(4-4)	Erin Boley vs Fordham (11/14/16)
	1.000	(3-3)	Erin Boley at Chattanooga (12/27/16)
	1.000	(3-3)	Marina Mabrey vs UL-Lafayette (11/22/16)
	1.000	(3-3)	Arike Ogunbowale vs Fordham (11/14/16)
Rebounds	1.000	(3-3)	Marina Mabrey vs Fordham (11/14/16)
	12		Brianna Turner vs UConn (12/07/16)
	12		Brianna Turner vs UL-Lafayette (11/22/16)
Assists	12		Brianna Turner vs Washington (11/20/16)
	12		Lindsay Allen at Chattanooga (12/27/16)
Steals	12		Lindsay Allen vs TCU (11/26/16)
	6		Jackie Young vs Valparaiso (12/4/16)
Blocked Shots	5		Marina Mabrey at Iowa (11/30/16)
	5		Lindsay Allen at Iowa (11/30/16)
	6		Brianna Turner at Georgia Tech (1/2/17)
Turnovers	6		Brianna Turner at Chattanooga (12/27/16)
	7		Kathryn Westbeld vs UConn (12/07/16)
Fouls	6		Kristina Nelson vs UL-Lafayette (11/22/16)
	5		Brianna Turner at NC State (12/29/16)
	5		Kristina Nelson at Chattanooga (12/27/16)
Minutes	5		Kristina Nelson vs UL-Lafayette (11/22/16)
	40		Lindsay Allen at NC State (12/29/16)
	40		Lindsay Allen at DePaul (12/10/16)
	40		Lindsay Allen vs UConn (12/07/16)
	40		Lindsay Allen vs Washington (11/20/16)
	40		Lindsay Allen vs Green Bay (11/17/16)

Notre Dame Opponent High/Low Analysis (as of Jan 02, 2017)
All games

OPPONENT INDIVIDUAL GAME HIGHS

Points	24		Queen Alford at Chattanooga (12/27/16)
	23		BRAVO-HARRIOTT, Jay at Toledo (12/18/16)
	22		Kelsey Plum vs Washington (11/20/16)
	21		Tori Jankoska at Michigan State (12/20/16)
	20		Napheesa COLLIER vs UConn (12/07/16)
Field Goals Made	20		Jessica LINDSTROM vs Green Bay (11/17/16)
	9		Queen Alford at Chattanooga (12/27/16)
	8		Tori Jankoska at Michigan State (12/20/16)
	8		BRAVO-HARRIOTT, Jay at Toledo (12/18/16)
	8		January, Jessica at DePaul (12/10/16)
Field Goal Att.	8		Schulte, Brooke at DePaul (12/10/16)
	8		Jessica LINDSTROM vs Green Bay (11/17/16)
	23		January, Jessica at DePaul (12/10/16)
	23		Gordon, Jaylyn vs UL-Lafayette (11/22/16)
	23		Gordon, Jaylyn vs UL-Lafayette (11/22/16)
FG Pct (min 5 made)	.778	(7-9)	Napheesa COLLIER vs UConn (12/07/16)
	.778	(7-9)	Megan Gustafson at Iowa (11/30/16)
3-Point FG Made	5		BRAVO-HARRIOTT, Jay at Toledo (12/18/16)
	5		Aleah SWARY vs Central Michigan (11/11/16)
3-Point FG Att.	10		Chelsey Shumpert at Chattanooga (12/27/16)
	10		BRAVO-HARRIOTT, Jay at Toledo (12/18/16)
	10		Cassie BREEN vs Central Michigan (11/11/16)
	10		Aleah SWARY vs Central Michigan (11/11/16)
3-Pt FG Pct (min 2 made)	1.000	(2-2)	Miah Spencer at NC State (12/29/16)
	1.000	(2-2)	Victoria Gaines at Michigan State (12/20/16)
	1.000	(2-2)	WOODY, Jada at Toledo (12/18/16)
Free Throws Made	6		Napheesa COLLIER vs UConn (12/07/16)
	6		Jada Butts vs TCU (11/26/16)
	6		Kelsey Plum vs Washington (11/20/16)
Free Throw Att.	8		Queen Alford at Chattanooga (12/27/16)
	8		January, Jessica at DePaul (12/10/16)
FT Pct (min 3 made)	1.000	(6-6)	Napheesa COLLIER vs UConn (12/07/16)
	1.000	(6-6)	Jada Butts vs TCU (11/26/16)
	1.000	(5-5)	Miah Spencer at NC State (12/29/16)
	1.000	(4-4)	Chelsea Nelson at NC State (12/29/16)
	1.000	(4-4)	Ashley Williams at NC State (12/29/16)
	1.000	(4-4)	Kia NURSE vs UConn (12/07/16)
	1.000	(3-3)	Katie Lou SAMUELSON vs UConn (12/07/16)
Rebounds	16		Jessica LINDSTROM vs Green Bay (11/17/16)
	15		G'mrice DAVIS vs Fordham (11/14/16)
Assists	6		Miah Spencer at NC State (12/29/16)
	6		Taryn McCutcheon at Michigan State (12/20/16)
	6		BOYD, Mikaela at Toledo (12/18/16)
	6		SANTUCCI, Mariella at Toledo (12/18/16)
	6		January, Jessica at DePaul (12/10/16)
	6		Gabby WILLIAMS vs UConn (12/07/16)
	6		Allie LeCLAIRE vs Green Bay (11/17/16)
Steals	5		Gabby WILLIAMS vs UConn (12/07/16)
	4		Quinn, Jodi vs UL-Lafayette (11/22/16)
	4		G'mrice DAVIS vs Fordham (11/14/16)
Blocked Shots	3		Jenna Allen at Michigan State (12/20/16)
	2		SANTUCCI, Mariella at Toledo (12/18/16)
	2		Gabby WILLIAMS vs UConn (12/07/16)
	2		Carol Willie vs TCU (11/26/16)

	2	Jordan Moore vs TCU (11/26/16)
	2	Madison WOLF vs Green Bay (11/17/16)
Turnovers	9	BOYD, Mikaela at Toledo (12/18/16)
	8	Georgi Donchetz vs Valparaiso (12/4/16)
Fouls	5	Akela Maize at NC State (12/29/16)
	5	Chelsea Nelson at NC State (12/29/16)
	5	Mehryn KRAKER vs Green Bay (11/17/16)
	5	Kate KRESLINA vs Fordham (11/14/16)
	5	Cassie BREEN vs Central Michigan (11/11/16)