



Sports Information Office
University of Notre Dame
112 Joyce Center
Notre Dame, IN 46556
www.und.com
574-631-7516
574-631-7941 FAX

NOTRE DAME

WOMEN'S BASKETBALL

2004-05 Irish Schedule/Results (22-3, 10-2 BIG EAST)

November

12	#	(10/11) Illinois State	W, 92-73
14	#	(10/11) Nebraska	W, 73-57
17	#	(11/10) Duke (6/6)	W, 76-65
20	#	(11/10) Ohio State (10/9)	W, 66-62
22		(6/6) Colorado State	W, 69-47
26		(6/6) at USC	W, 60-56
30		(3/3) at Valparaiso	W, 69-59

December

2		(3/3) Michigan St. (15/15)	L, 73-82 (ot)
9		(7/5) at Dayton	W, 65-39
11		(7/5) Washington	W, 72-58
19		(7/5) at Marquette	W, 50-47
30		(6/4) at Northern Illinois	W, 73-49

January

2	*	(6/4) Seton Hall	W, 54-33
5	*	(4/3) Syracuse	W, 75-58
9	*	(4/3) at Villanova	L, 54-59
12	*	(7/6) Connecticut (16/16)	L, 50-67
16	\$	(7/6) Purdue (20/20)	W, 86-69
19	*	(11/10) at Syracuse	W, 74-61
23	*	(11/10) Rutgers (6/7)	W, 63-47
26	*	(6/7) St. John's	W, 72-65
30	*	(6/7) at Connecticut (9/10)	...	W, 65-59

February

2	*	(6/7) Boston College (16/13)	W, 64-57
5	*	(6/7) at Pittsburgh	W, 75-47
9	*	(6/7) at Providence	W, 75-57
12	*	(6/7) Georgetown	W, 72-58
15	*	at Boston College (CSTV)	7:00 ET
19	*	at Rutgers	Noon ET
26	*	West Virginia (COM)	2:00 ET

March

1	*	at Seton Hall	7:00 ET
5-8	%	BIG EAST Championship		
19-22		NCAA First/Second Rounds (ESPN)		
26-29		NCAA Regionals (ESPN)		

April

3-5		NCAA Final Four (ESPN)		
		(Indianapolis, Ind.)		

* BIG EAST Conference game

Sportsview.tv Preseason WNIT (contested at campus sites)

\$ BIG EAST/Big Ten Challenge (Notre Dame, Ind.)

% To be played at Hartford Civic Center (Hartford, Conn.)

(COM) Game to be televised on Comcast Local (Detroit)

(CSTV) Game to be televised on College Sports Television

(ESPN/ESPN2) Game to be televised on ESPN or ESPN2

Numbers before opponent name indicate Notre Dame's ranking in AP and ESPN/USA Today polls at tipoff; numbers after opponent name indicate its ranking; one number indicates AP rank only.

Boldface indicates home game played at Joyce Center (11,418)
All times are local to site // Dates and times subject to change

GAME 26

(#5 AP/#7 ESPN/USA Today) **Notre Dame Fighting Irish (22-3, 10-2)**
vs. (#25 AP/#19 ESPN/USA Today) **Boston College Eagles (16-6, 7-4)**

The Date and Time: Tuesday, Feb. 15, 2005, at 7 p.m. ET.

The Site: Conte Forum (8,606) in Chestnut Hill, Mass.

The Tickets: Still available through the Notre Dame athletics ticket office (574-631-7356), the Boston College athletics ticket office (617-552-4622) or at the door on game night.

The TV Plans: College Sports Television (CSTV) national broadcast with **Beth Mowins** (play-by-play), **Debbie Antonelli** (analysis), **Jesse Christensen** (producer) and **Bob Fraterolli** (director). The game can be seen live in the South Bend market on WHME-TV (Channel 46) and also is available nationally on DirecTV (Channel 610).

The Radio Plans: Tuesday's game will be broadcast live on WDND-AM (ESPN Radio 1580) and WNDV-AM (1490) in South Bend with **Sean Stires** (play-by-play) calling the action. These broadcasts also are available through the Notre Dame athletics web site at www.und.com.

Real-Time Statistics: Live in-game statistics, courtesy of College Sports Online's GameTracker, are available for the Boston College game, via the Notre Dame (www.und.com) and Boston College (www.bceagles.com) athletics web sites.

Web Sites: Notre Dame (www.und.com), Boston College (www.bceagles.com).

#5/7 NOTRE DAME BEGINS KEY TWO-GAME ROAD TRIP TUESDAY AT BOSTON COLLEGE

With two weeks to go in the regular season, No. 5/7 Notre Dame will embark on perhaps its most important road swing of the season, beginning Tuesday with a 7 p.m. (ET) rematch at No. 25/19 Boston College. The Irish hold a scant half-game lead in the BIG EAST Conference standings, and will need to come through at two sites where they have traditionally had trouble — BC (Tuesday) and Rutgers (Saturday).

Notre Dame (22-3, 10-2 BIG EAST) stretched its season-long winning streak to nine games last Saturday with a 72-58 victory over Georgetown at the Joyce Center. The Irish led wire-to-wire, opening up a 17-point lead with five minutes to go in the first half. Notre Dame then weathered a spirited comeback by the Hoyas before going on a 17-4 run midway through the second half to put the game on ice.

Senior All-America forward **Jacqueline Batteast** turned in one of her strongest all-around efforts of the season, piling up a game-high 20 points, eight rebounds and five assists. Junior guard **Megan Duffy** added 17 points and seven assists for the Irish.

Boston College (16-6, 7-4) snapped a three-game losing streak last weekend with a 75-50 victory at Syracuse. Junior forward Brooke Queenan led four Eagles in double figures with 16 points.

With the loss of top scorer Jessalyn Deveny to injury, Queenan (11.2 ppg.) and sophomore Kathrin Ress (10.8 ppg.) are BC's top point producers.

LAST IRISH GAME

#6/7 Notre Dame 72, Georgetown 58
February 12, 2005
Joyce Center (Notre Dame, Ind.)

Georgetown (58)

Player	min	fg-a	3fg-a	ft-a	reb	ast	pf	tp
Tamoulianis	31	3-11	0-0	0-2	1	1	2	6
Marlow	32	3-7	0-0	0-0	5	2	1	6
Heidloff	35	2-8	2-6	1-2	2	2	2	7
Carlin	29	3-7	2-5	3-3	3	0	0	11
LeSueur	30	3-6	0-0	4-8	2	4	5	10
Lisicky	34	6-11	2-5	2-2	2	5	3	16
Whitt	9	1-1	0-0	0-0	2	0	1	2
Team					4			
Totals	200	21-51	6-16	10-17	21	14	14	58

Notre Dame (72)

Player	min	fg-a	3fg-a	ft-a	reb	ast	pf	tp
Batteast	38	8-18	0-3	4-4	8	5	1	20
LaVere	11	0-1	0-0	0-0	1	1	2	0
Borton	33	7-10	0-0	0-1	12	0	2	14
Duffy	38	3-8	2-7	9-10	3	7	2	17
Gray	21	2-2	0-0	1-2	2	1	0	5
Gaines	12	0-2	0-0	0-0	3	1	0	0
Allen	26	5-9	0-0	4-4	6	4	4	14
Erwin	21	0-3	0-0	2-4	5	0	1	2
Team					2			
Totals	200	25-53	2-10	20-25	42	19	12	72

Georgetown	26	32	--	58
Notre Dame	35	37	--	72

FG Pct: Georgetown 41.2, Notre Dame 47.2. **3-PT FG Pct:** Georgetown 37.5, Notre Dame 20.0. **FT Pct:** Georgetown 58.8, Notre Dame 80.0. **Turnovers:** Georgetown 19, Notre Dame 21. **Blocked Shots:** Georgetown 1, Notre Dame 4. **Steals:** Georgetown 10 (Heidloff 3), Notre Dame 8. **Attendance:** 6,461.



ASSOCIATED PRESS POLL
(Feb. 14)

Rk.	Team	Record	Previous
1.	LSU (45)	23-1	1
2.	Ohio State	24-2	2
3.	Duke	23-2	3
4.	Stanford	22-2	4
5.	NOTRE DAME	22-3	6
6.	Tennessee	19-4	5
7.	Baylor	19-3	7
8.	North Carolina	20-3	8
9.	Michigan State	22-3	9
10.	Rutgers	18-5	11
11.	Connecticut	16-6	10
12.	DePaul	21-3	15
13.	Texas	15-7	17
14.	Minnesota	19-5	12
15.	Texas Tech	17-5	13
16.	Georgia	20-6	18
17.	Temple	20-3	20
18.	Kansas State	17-5	16
19.	Iowa State	18-4	14
20.	Maryland	17-6	19
21.	North Carolina State	17-5	23
22.	Vanderbilt	17-6	21
23.	Wisconsin-Green Bay	21-2	24
24.	Penn State	16-8	25
25.	<i>Boston College</i>	<i>16-6</i>	<i>22</i>

ESPN/USA TODAY POLL
(Feb. 8)

Rk.	Team	Record	Previous
1.	LSU (39)	21-1	1
2.	Stanford	21-2	2
3.	Ohio State (1)	22-2	3
4.	Duke	22-2	4
5.	Tennessee	18-3	5
6.	North Carolina	19-3	6
7.	NOTRE DAME	20-3	7
8.	Baylor	17-3	9
9.	Michigan State	20-3	10
10.	Connecticut	15-5	11
11.	Rutgers	16-5	8
12.	Texas Tech	16-4	12
13.	Minnesota	18-4	16
14.	Iowa State	18-2	18
15.	DePaul	19-3	17
16.	Kansas State	17-4	15
17.	Texas	13-7	14
18.	Georgia	18-6	19
19.	<i>Boston College</i>	<i>15-5</i>	<i>13</i>
20.	Vanderbilt	16-5	20
21.	Maryland	16-5	21
22.	Temple	18-3	22
23.	Wisconsin-Green Bay	20-2	NR
24.	(tie) N.C. State	16-5	NR
	(tie) Florida State	19-5	24

Italics indicates 2004-05 Notre Dame opponents

A QUICK LOOK AT THE FIGHTING IRISH

It's hard to say a 13-3 team was at a crossroads in its season, but Notre Dame found itself in such a situation entering its Jan. 16 game with No. 20 Purdue. The Irish had opened with wins in 13 of their first 14 games, including a memorable run to the Sportsview.tv Preseason WNIT title that included victories over a pair of top-10 opponents (No. 6 Duke and No. 10 Ohio State). However, after rising as high as third in the polls, a pair of bitter losses to BIG EAST foes Villanova and No. 16 Connecticut sapped some of the team's confidence and left them searching for answers heading into the Purdue contest.

After a tense struggle through the first 10 minutes, Notre Dame pulled away and put together its second-highest offensive production of the season while ending a four-game losing streak to its in-state rival. The victory sparked a current season-high nine-game winning streak that has seen Notre Dame win six times by double figures, and four times against ranked opponents (two vs. top-10 foes). In addition to the Purdue victory, the Irish also have come back from a 13-point deficit to defeat No. 6/7 Rutgers, gone on the road to oust No. 9/10 Connecticut (snapping the Huskies' 112-game BIG EAST regular-season home winning streak) and fought past No. 16/13 Boston College.

Despite the added focus shown to her by opposing teams (and a recent bout with a stomach virus), senior All-America forward **Jacqueline Batteast** was a major catalyst for the Irish this season, averaging 18.0 points, 6.6 rebounds and 3.0 assists per game. A four-time BIG EAST Player of the Week and member of the Wooden Women's Award Midseason Top 20 List, Batteast has scored in double digits 22 times this season, has earned game-high scoring honors on 14 occasions and has six double-doubles. She also moved into the top five on Notre Dame's career lists for points (1,765), rebounds (911), blocks (157) and double-doubles (38). In addition, with 10 rebounds at Providence Feb. 9, she became only the third Irish player to amass 1,700 points and 900 rebounds in her career, joining All-Americans Katryna Gaither and Ruth Riley.

Junior guard **Megan Duffy** also has stepped up her play this season, registering 11.5 points per game with a team-high 5.6 assists (second in the BIG EAST and 26th in the nation) and 2.72 steals per game (first in the BIG EAST). Duffy also leads the league and is fourth nationally with a .910 free throw percentage (101-111) this season, sparking the Irish to a .743 free throw ratio (second in the league and 28th in the NCAA as of Feb. 8).

In the post, senior center **Teresa Borton** is showing capable leadership by example. In the past 12 games, Borton is averaging 11.2 ppg. and 7.2 rpg. with a .630 field goal percentage (58-92) and has eight double-figure scoring games. She is third on the team in scoring this season (9.0 ppg.), second in rebounding (6.2 rpg.) and first in blocked shots (1.72 bpg.) and field goal percentage (.585).

SOME POTENT NOTABLES ABOUT THE FIGHTING IRISH

- Notre Dame won its first seven games this season, the second-best debut in the program's history. The 2000-01 squad opened with a 23-game win streak en route to school's first national championship. The Irish also reached the double-digit win mark Dec. 19 at Marquette, getting their 10th win faster than any team in school history (the '00-01 team did it two days later on Dec. 21, 2000).
- The Irish are 9-1 on the road this year, and won their first five road games this season for the second time in school history. The 2000-01 club opened with a 10-game road winning streak to set the school standard. Ironically, Notre Dame struggled in true road games last year, losing its first four and six of its first seven on the opposition's floor.
- Notre Dame picked up its 20th win of the season Feb. 5 at Pittsburgh. The Irish have now posted 12 consecutive 20-win seasons (one of only six schools in the nation that can make that claim) and 16 in the 18-year Muffet McGraw era. In addition, Notre Dame reached the 20-win mark in its 23rd game this season, marking the fourth-fastest run to 20 victories in school history. The 2000-01 club opened with 23 consecutive wins, while the 1998-99 and 1999-2000 squads each did it in 22 games. However, in terms of calendar dates, the Irish logged their 20th win faster than any Notre Dame team except the 2000-01 unit, which reached the mark on Jan. 31.
- The Irish have been a fixture near the top of the RPI charts this year. Through Feb. 13, Notre Dame is fourth in the WBCA/Summerville RPI rankings, with the nation's 25th-toughest schedule.
- Notre Dame has appeared in the top 10 of the AP balloting 13 times in the first 15 polls of the year, checking in at No. 5 this week. On three other times in school history have the Irish spent longer in the AP top 10 during one season — 1998-99 (16 weeks), 1999-2000 (15 weeks) and 2000-01 (18 weeks). All told, Notre Dame has now spent 69 weeks in the AP top 10 and has a 106-18 (.855) all-time record when it's ranked in the top 10.
- The Irish have posted 36 wins over AP Top 25 opponents in the past seven seasons (1998-99 to present), including six this year (No. 6 Duke, No. 10 Ohio State, No. 20 Purdue, No. 6 Rutgers, No.

CONTE FORUM • CHESTNUT HILL, MASS.

NOTRE DAME'S PROBABLE STARTING LINEUP

No.	Player	Pos.	Ht.	Yr.	PPG	RPG	Other	Notes
21	Jacqueline Batteast*	F	6-2	Sr.	18.0	6.6	3.0 apg	Four-time BIG EAST Player of the Week
41	Courtney LaVere	F	6-3	Jr.	7.6	3.9	1.4 apg	Started past two gms.; 9.5 ppg., .516 FG% in last 8
12	Teresa Borton*	C	6-3	Sr.	9.0	6.2	1.7 bpg	11.2 ppg., 7.2 rpg., .630 FG% in past 12 games
13	Megan Duffy*	G	5-7	Jr.	11.5	3.1	5.6 apg	7.0 apg., 2.4 assist/turnover ratio in past 12 gms.
32	Breona Gray	G	5-7	So.	5.6	3.5	1.8 apg	Second on team with 32 steals (1.28 spg.) this year

OFF THE BENCH FOR THE IRISH

No.	Player	Pos.	Ht.	Yr.	PPG	RPG	Other	Notes
1	Tulyah Gaines	G	5-6	Fr.	2.4	1.5	1.3 apg	Logging 4.0 ppg., .583 FG% in past five games
2	Charel Allen	G	5-11	Fr.	8.1	4.5	1.7 apg	Averaging 11.7 ppg., .522 FG% in last nine games
3	Susie Powers	G	5-10	So.	0.5	1.1	0.6 apg	Came up with career-best two blocks at Pittsburgh
11	Amanda Tsipis	G	5-10	Fr.	0.4	0.1	0.1 apg	Walk-on frosh has seen action in nine games
33	Melissa D'Amico	F/C	6-5	Fr.	2.0	1.6	0.5 bpg	Averaging 2.7 ppg. on 3-4 FG in past four games
34	Crystal Erwin	F	6-1	So.	6.1	4.2	1.0 apg	Collecting 5.1 rebounds in past seven games

Boldface indicates statistical leaders // * - indicates team captains

9 Connecticut and No. 16 Boston College). Notre Dame is tied for the fourth-most Top 25 wins this season, exceeded only by Duke's eight wins and seven victories each for Michigan State and Ohio State. During the past two years, the Irish have 13 wins over ranked opponents.

- Notre Dame has defeated 23 top-10 opponents in its history, adding to that total with four victories this season. The four top-10 wins represent the second-highest total in school history (and tie Penn State and Rutgers for the most by any team in the nation this season) — the 2000-01 squad holds the Irish record with seven top-10 victories.
- Notre Dame owns a unique distinction with victories over both the No. 2 (Ohio State) and No. 3 (Duke) teams in this week's Associated Press poll. In fact, the Irish are one of only two teams to defeat Duke so far this season, and also one of just two squads to solve OSU in 2004-05.
- Head coach **Muffet McGraw** has a 406-152 (.728) record in 18 seasons with the Irish, having logged the milestone 400th victory Jan. 23 against Rutgers. She also has a 494-193 (.719) overall record in 23 seasons, leaving her only six victories shy of the 500-win plateau for her career.

A QUICK LOOK AT BOSTON COLLEGE

Although it's been less than two weeks since Notre Dame and Boston College last played one another, there's a significant change in the Eagles' camp. Entering the first matchup with the Irish, BC was counting on the return of all-BIG EAST guard Jessalyn Deveny, who was recovering from a sore right Achilles' tendon. However, less than a minute after she took the floor, Deveny's season was unfairly cut short when that same Achilles' tendon ruptured.

During the ensuing four games (including the first Notre Dame contest), Boston College has had to adjust to the loss of Deveny, the team's top scorer (17.1 ppg.) and three-point shooter (.511), not to mention their captain and emotional centerpiece. The adjustment resulted in a three-game losing streak before the Eagles bounced back last Saturday with a 75-50 victory at Syracuse. Junior forward Brooke Queenan led four BC players in double figures with 16 points, while senior guard/forward Clare Drosch chipped in with 15 points and seven assists.

Queenan has stepped into the breach left by Deveny's absence, averaging 11.2 points per game (11.0 ppg. in the past three contests), and sophomore forward Kathrin Ress is next on the team in scoring (10.8 ppg.). Drosch is up to 9.2 ppg. with a team-high 6.1 rpg. and a team-best 26 three-point field goals, while junior center Lisa Macchia (5.9 ppg., .565 FG%) has contributed 9.0 ppg. in the past three outings and sophomore guard Kindyll Dorsey (2.9 ppg.), who had 10 points in the first matchup at Notre Dame, has averaged 7.7 ppg. and is shooting .556 from the three-point line in place of Deveny.

Head coach Cathy Inglesse has provided a steady hand for Boston College for the past 12 seasons, compiling a 214-135 (.613) with the Eagles. Prior to arriving in Chestnut Hill, she spent seven years as

THE TALE OF THE TAPE

	ND	BC
Overall/BIG EAST record	22-3/10-2	16-6/7-4
AP/ESPN-USA Today rank	5/7	25/19

SCORING

Points scored per game	68.7	71.7
Points allowed per game	57.2	57.8
Field goal percentage	.443	.492
Three-point percentage	.371	.418
Free throw percentage	.743	.752

REBOUNDING

Rebounds per game	38.9	37.6
Opponent rebs. per game	36.1	29.8
Rebounding margin	+2.8	+7.8

OTHER

Assists per game	17.0	18.9
Turnovers per game	15.9	16.4
Assist/turnover ratio	1.07	1.15
Blocked shots per game	5.0	3.0
Steals per game	9.6	8.0

THE KEVIN WHITE RADIO SHOW

A weekly radio show featuring Notre Dame athletics director **Kevin White** airs at 7 p.m. (Central time) each Thursday on ESPN Radio 1000 in Chicago (1000 AM in Chicago, www.espnradio1000.com). Now in its fifth season, "The Kevin White Show" can be heard in 35 states. White welcomes to the show a series of guests and prominent figures associated with college athletics, including administrators, coaches and media members.



THE BOSTON COLLEGE SERIES

Series: Notre Dame leads 9-4. Games Played at Chestnut Hill: Boston College leads 4-2 (Boston College leads 3-2 at Conte Forum).

Date	Site	Result	Score
12/30/83	Chestnut Hill, Mass. *	L	55-59
1/6/96	Notre Dame, Ind.	W	80-51
1/7/97	Chestnut Hill, Mass.	W	61-57
2/12/97	Notre Dame, Ind.	W	91-64
2/12/98	Chestnut Hill, Mass.	L	76-78
12/30/98	Chestnut Hill, Mass.	L	65-78
2/3/99	Notre Dame, Ind.	W	74-59
2/5/00	Notre Dame, Ind.	W	72-59
2/3/01	Chestnut Hill, Mass.	W	81-65
2/10/02	Notre Dame, Ind.	W	60-44
1/29/03	Chestnut Hill, Mass.	L	48-76
1/31/04	Notre Dame, Ind.	W	52-50
2/2/05	Notre Dame, Ind.	W	64-57

* - Nike Christmas Classic

Series Scoring	Total	Average
Notre Dame	879	67.6
Boston College	797	61.3

- Current Win Streak: Notre Dame - 2 games
- Muffet McGraw vs. Boston College: 9-3
- Cathy Inglesse vs. Notre Dame: 3-9
- McGraw vs. Inglesse: McGraw leads 9-3
- ND Biggest Win: 27 (91-64 on 2/12/97)
- BC Biggest Win: 28 (76-48 on 1/29/03)
- ND Longest Win Streak: 4 (1999-2002)
- BC Longest Win Streak: 2 (1998)

WHEN THE GAME IS ON THE LINE ...

Here's a look at Notre Dame's performance at the free throw line in the final five minutes of regulation and overtime this season:

Charel Allen	16-16 (1.000)
Amanda Tsipis	2-2 (1.000)
Megan Duffy	47-54 (.870)
Jacqueline Batteast	11-13 (.846)
Tulyah Gaines	9-11 (.818)
Teresa Borton	5-7 (.714)
Courtney LaVere	5-7 (.714)
Breona Gray	7-10 (.700)
Crystal Erwin	3-6 (.500)
Melissa D'Amico	3-9 (.333)
TOTAL	108-135 (.800)

the head coach at Vermont, tutoring such prominent future head coaches as Minnesota's Pam Borton and Syracuse's Keith Cieplicki. Inglesse's career record stands at 334-209 (.615) in 19 seasons, although she is 3-9 all-time against Notre Dame.

THE NOTRE DAME-BOSTON COLLEGE SERIES

Notre Dame and Boston College have developed one of the more intense rivalries in the BIG EAST Conference during the past decade. With both squads regularly competing for the conference title, not to mention deep runs in the NCAA Tournament, the annual matchups between the Irish and Eagles have been spirited, if not thrilling in nature. Notre Dame leads the all-time series, 9-4, although Boston College owns a 4-2 edge when the scene shifts to Chestnut Hill in a series that has been largely dominated by the home team.

Notre Dame and BC first met on Dec. 30, 1983, when the Irish paid a visit to Chestnut Hill for the Nike Christmas Classic. The Eagles won that initial game, 59-55, before the series went dormant for the next 11 seasons. It wouldn't resume until Notre Dame joined the BIG EAST in time for the 1995-96 campaign.

The Irish won the first three conference games between the teams before Boston College picked up a pair of victories in 1998 to even the series at three games apiece. However, beginning with the second half of the 1998-99 season, Notre Dame has won six of the past seven games in the series, with five of those victories coming at the Joyce Center. The Eagles continued to maintain the upper hand in Chestnut Hill, earning their most recent win on Jan. 29, 2003, with a 76-48 rout at Conte Forum.

Tuesday night's game will mark BC's last regular-season matchup against Notre Dame as a member of the BIG EAST. Starting next season, the Eagles will compete in the Atlantic Coast Conference (ACC).

THE LAST TIME NOTRE DAME AND BOSTON COLLEGE MET

Notre Dame senior All-America forward **Jacqueline Batteast** scored all 15 of her points in the second half as the sixth-ranked Irish beat No. 16/13 Boston College, 64-57 on Feb. 2 at the Joyce Center.

The Eagles (15-4, 6-2 BIG EAST) went ahead 54-53 when Lisa Macchia scored inside with 6:45 left. But the Irish (19-3, 7-2) took the control with an 8-0 run, getting four of their points from baskets inside. It started with Batteast going around Macchia to score.

Batteast was double-teamed down low on Notre Dame's next possession, but passed to senior center **Teresa Borton**, who was wide open for a basket. After Macchia was called for a travel, junior forward **Courtney LaVere** hit a 15-foot shot to put the game away as the Eagles went five minutes without scoring, going 0-for-6 during that stretch.

Borton added 12 points for the Irish, who outscored the Eagles 44-18 inside despite being outbounded 45-32.

Clare Droesch led BC with 14 points and 10 rebounds, Aja Parham had 13 points and 13 rebounds, Sarah Marshall added 11 points and Kindyll Dorsey, who entered the game with 10 points this season, added 10 points.

The Eagles, the nation's best-shooting team, couldn't overcome a .345 field goal percentage or 22 turnovers. But BC managed to make a game of it after falling behind by nine points early in the second half. The Eagles had a 19-6 run and led 49-45 on a layup by Parham midway through the half.

Boston College kept the score close throughout the first half despite missing its first 10 shots and losing leading scorer Jessalyn Deveny five minutes in with a reinjured right Achilles' tendon.

LAST IRISH GAME AT BOSTON COLLEGE

Boston College 76, Notre Dame 48
January 29, 2003
Conte Forum (Chestnut Hill, Mass.)

Notre Dame (48)

Player	min	fg-a	3fg-a	ft-a	reb	ast	pf	tp
Batteast	36	7-24	1-3	2-2	13	2	1	17
Borton	24	3-6	0-0	0-0	1	0	4	6
Severe	10	0-1	0-0	0-0	1	2	1	0
Duffy	37	1-6	1-2	0-1	1	1	2	3
Ratay	33	2-6	2-4	2-2	9	1	2	8
Krause	6	0-1	0-0	0-0	0	0	0	0
Swanson	2	0-0	0-0	0-0	0	0	0	0
Flecky	28	3-7	0-2	1-2	5	2	4	7
LaVere	24	2-9	0-0	3-4	4	0	5	7
Team					6			
Totals	200	18-60	4-11	8-11	40	8	19	48

Boston College (76)

Player	min	fg-a	3fg-a	ft-a	reb	ast	pf	tp
Stepherson	29	4-11	0-0	2-3	7	5	3	10
Gottstein	35	3-8	0-0	6-6	9	4	2	12
Mackie	30	3-4	0-0	2-3	2	1	3	8
Deveny	39	7-16	0-3	4-4	9	1	2	18
Jacobs	26	8-9	0-1	1-2	3	5	2	17
Queenan	2	0-0	0-0	0-0	0	0	0	0
Smith	1	0-1	0-0	0-0	0	0	0	0
Droesch	18	3-10	2-8	0-0	3	0	4	8
Parham	1	0-0	0-0	0-0	1	0	0	0
Warren	1	0-0	0-0	0-0	0	0	0	0
Shields	4	0-1	0-0	0-0	0	0	0	0
Spears	13	1-3	0-0	1-2	3	0	0	3
Macchia	1	0-0	0-0	0-0	1	0	0	0
Team					3			
Totals	200	29-63	2-12	16-20	41	16	16	76

Notre Dame	25	23	--	48
Boston College	23	53	--	76

FG Pct: Notre Dame 30.0, Boston College 46.0. 3-PT FG Pct: Notre Dame 36.4, Boston College 16.7. FT Pct: Notre Dame 72.7, Boston College 80.0. Turnovers: Notre Dame 19, Boston College 13. Blocked Shots: Notre Dame 4 (Batteast 2), Boston College 2. Steals: Notre Dame 4, Boston College 10 (Jacobs 4). Attendance: 3,669.



THE LAST TIME NOTRE DAME AND BOSTON COLLEGE MET IN CHESTNUT HILL

Jacqueline Batteast posted her sixth double-double of the 2002-03 season, but it was not enough as No. 24 (ESPN/USA Today) Notre Dame dropped a 76-48 decision at No. 25 (ESPN/USA Today) Boston College on Jan. 29, 2003, before a crowd of 3,669 at Conte Forum in Chestnut Hill, Mass. It was the Eagles' first win over the Irish since 1998, breaking a four-game BC losing streak in the series.

Batteast rolled up 17 points and 13 rebounds, while Alicia Ratay added eight points and a season-best nine rebounds, marking the second consecutive game in which Ratay matched her season high in rebounds.

Jessalyn Deveny led four Boston College players in double figures with 18 points, all in the second half. Amber Jacobs chipped in with 17 points on 8-of-9 shooting, and Becky Gottstein nearly charted a double-double with 12 points and nine rebounds.

The teams played virtually even for the first nine minutes, trading the lead five times with four ties. Notre Dame fired the first salvo of the night, going on an 11-0 run to take its largest lead of the game at 21-12 with 5:45 remaining in the first half. However, BC responded with an 11-2 run of its own to pull even at 23-23 with 29 seconds left in the period. A pair of free throws by **Courtney LaVere** would give the Irish a two-point lead at halftime.

Notre Dame (11-7, 3-4 BIG EAST) built on its edge early in the second half, taking a 34-29 lead on a jumper by Batteast with 16:17 to play. That's when the Eagles took control, going on a 17-2 run over the next four minutes to take a 10-point lead. The Irish made a brief surge and got as close as 51-43 when **Megan Duffy** canned a three-pointer at the 9:22 mark. Boston College then iced the win by scoring 25 of the final 30 points in the game.

The Eagles (14-4, 6-1) were razor sharp in the second half, connecting on 57.6 percent of their shots (19-for-33). They also sparkled at the foul line, making 13-of-14 free throws (92.9 percent). Meanwhile, Notre Dame was hampered by the loss of starting point guard Le'Tania Severe, who was injured midway through the first half and did not return.

OTHER NOTRE DAME-BOSTON COLLEGE SERIES NOTES

- Only five times in 13 previous meetings has Boston College scored more than 60 points in a game against Notre Dame (four coming at Conte Forum). Conversely, the Irish have topped the 60-point mark 10 times against BC, including four of their six visits to Chestnut Hill.
- For the third (and final) time in Notre Dame's 10-year affiliation with the BIG EAST Conference, the Irish will be playing Boston College twice this season. Notre Dame also faced the Eagles on two occasions during the 1996-97 (ND sweep) and 1998-99 (split) campaigns.
- Tuesday's Notre Dame-Boston College contest will mark the 11th time in the past 12 series games that one or both teams are ranked at tipoff (ND leads 8-2 in these games). The 1997-98 matchup (a 78-76 BC win on Feb. 12) is the only time in the past nine seasons ('96-97 to present) that neither team appeared in the top 25 of one of the major national polls prior to the game.
- Senior All-America forward **Jacqueline Batteast** is averaging team highs of 13.8 points, 7.8 rebounds and 2.3 blocks in four career games against Boston College.

THE BEAST OF THE BIG EAST

Notre Dame is 134-30 (.817) in regular-season competition against the rest of BIG EAST Conference, owning the best conference winning percentage of any current member of the BIG EAST since joining the circuit for the 1995-96 campaign. The Irish also have finished either first or second in the BIG EAST eight times in their nine-year membership, and claimed a share of their first-ever regular-season conference championship in 2001.

When including postseason competition (BIG EAST and NCAA tournaments), Notre Dame is 147-39 (.790) against league opponents — when factoring in these 22 postseason tilts, the Irish are 75-8 (.904) at home, 59-25 (.702) on the road and 13-6 (.684) at neutral sites all-time vs. BIG EAST foes.

IRISH IN THE POLLS

Here's where Notre Dame has been ranked in both of the major national Top 25 polls during the 2004-05 season:

Week	AP	ESPN/USA Today
Preseason	10	11
Nov. 15	11	10
Nov. 22	6	6
Nov. 29	3	3
Dec. 6	7	5
Dec. 13	7	5
Dec. 20	7	5
Dec. 27	6	4
Jan. 3	4	3
Jan. 10	7	6
Jan. 17	11	10
Jan. 24	6	7
Jan. 31	6	7
Feb. 7	6	7
Feb. 14	5	TBA

IRISH MEDIA POLICIES

MEDIA CONTACT

Notre Dame assistant sports information director **Chris Masters** is the primary media contact for Irish women's basketball. He may be reached in his office at (574) 631-8032, via cell phone at (574) 532-4166 or e-mail at masters.5@nd.edu.

IN-SEASON INTERVIEW POLICY

All requests for Notre Dame player or coach interviews must be made through **Chris Masters** and 24 hours' notice should be allowed when scheduling interviews. Media members also may speak to Irish team personnel following practice sessions. While most practices are open to the media, some may be closed at the staff's discretion — contact **Chris Masters** for the latest practice schedule. On game days, no interviews will be granted prior to competition.

POST-GAME PRESS CONFERENCES

Following each Irish home game, Notre Dame head coach **Muffet McGraw** and selected players, followed by the visiting head coach and selected players, will be available to speak with the media. Press conferences will be held in the Joyce Center auditorium, located adjacent to Gate 1 on the first floor of the arena. Media members should submit player requests for post-game interviews to **Chris Masters** no later than the four-minute mark of the second half.

MEDIA SERVICES

- Credentials for all Notre Dame women's basketball games must be submitted to **Chris Masters** at least 24 hours prior to each game. Media passes will be left at the Joyce Center Media Will Call table, located inside Gate 1.
- Media should park in the lots located immediately south of the Joyce Center (no charge).
- Media members wishing to receive Notre Dame women's basketball game notes and press releases in PDF form via e-mail should send requests to **Chris Masters** at masters.5@nd.edu.
- Notre Dame's official athletics department web site can be found at www.und.com, with extensive offerings including live audio for all Irish women's basketball games (home and away), as well as real-time statistics for all Notre Dame home games.



**BIG EAST STANDINGS
(through games of Feb. 14)**

Pl.	Team	BIG EAST	Overall
1.	NOTRE DAME	10-2	22-3
2.	Rutgers	9-2	18-5
	Connecticut	9-2	16-6
4.	Boston College	7-4	16-6
	Villanova	7-4	14-8
6.	St. John's	6-6	17-6
	Seton Hall	6-6	14-9
8.	West Virginia	4-7	13-9
	Georgetown	4-7	9-13
10.	Pittsburgh	3-8	11-11
11.	Syracuse	3-9	11-12
12.	Providence	0-11	1-21

PLAYER OF THE WEEK

- Nov. 22** **Jacqueline Batteast, Notre Dame**
 Nov. 29 Jessalyn Deveny, Boston College
 Yolanda Paige, West Virginia
 Dec. 6 Meg Bulger, West Virginia
 Dec. 13 Jessalyn Deveny, Boston College
 Sherell Sowho, West Virginia
Dec. 20 **Jacqueline Batteast, Notre Dame**
 Dec. 27 Monique Blake, Seton Hall
 Meg Bulger, West Virginia
 Jan. 3 Jessalyn Deveny, Boston College
 Jan. 10 Jackie Adamshick, Villanova
 Monique Blake, Seton Hall
 Jan. 17 Meg Bulger, West Virginia
Jan. 24 **Jacqueline Batteast, Notre Dame**
 Jan. 31 Ashley Bush, Seton Hall
 Cappie Pondexter, Rutgers
 Feb. 7 Greeba Barlow, St. John's
Feb. 14 **Jacqueline Batteast, Notre Dame**

FRESHMAN OF THE WEEK

- Nov. 22 Sara Antolick, Syracuse
 Nov. 29 Andrea Peterson, St. John's
 Dec. 6 Charde Houston, Connecticut
 Dec. 13 Shamika Jackson, Boston College
 Dec. 20 Matee Ajavon, Rutgers
 Dec. 27 Kieraah Marlow, Georgetown
 Jan. 3 Matee Ajavon, Rutgers
 Jan. 10 Essence Carson, Rutgers
 Jan. 17 Matee Ajavon, Rutgers
 Charde Houston, Connecticut
 Jan. 24 Charde Houston, Connecticut
 Mercedes Walker, Pittsburgh
 Jan. 31 Kieraah Marlow, Georgetown
 Vaida Sipaviciute, Syracuse
Feb. 7 **Charel Allen, Notre Dame**
 Feb. 14 Matee Ajavon, Rutgers

POLLING PLACE

Notre Dame is 183-43 (.810) all-time when it is ranked in the Associated Press poll at tipoff (the Irish are fifth entering Tuesday night's game at Boston College). When playing at home, Notre Dame has been especially strong, going 86-10 (.896) as a ranked host after posting a 13-2 record at the Joyce Center this season. Conversely, the Irish are 73-25 (.745) all-time when they play on the road as a ranked team.

Upon closer inspection, Notre Dame has been very sharp when it's ranked in the top 10 of the AP poll. The Irish are 106-18 (.855) as a top-10 squad, including a 52-4 (.929) record at home. In fact, prior to its Dec. 2 overtime loss to then-No. 15 Michigan State, Notre Dame had a 41-game home winning streak when it was ranked in the AP top 10, dating back to December of 1998.

RISING UP

Notre Dame has posted a 6-2 record against ranked opponents this season, including a 4-0 mark against top-10 foes. Here's a look at the Irish statistical leaders against Top 25 clubs this year:

- **Jacqueline Batteast** — 18.1 ppg., 5.8 rpg., three 20-point games, one double-double
- **Megan Duffy** — 12.8 ppg., 5.9 apg., .481 FG% (25-52), .520 3FG% (13-25), six five-assist games
- **Charel Allen** — 9.1 ppg., 4.0 rpg., .531 FG% (26-49), 1.000 3FG% (5-5)
- **Teresa Borton** — 8.3 ppg., 7.3 rpg., 2.4 bpg., .509 FG% (27-53)
- **TEAM** — 67.9 ppg., .511 3FG% (23-45), .770 FT% (134-174)

BATTEAST NAMED BIG EAST PLAYER OF THE WEEK FOR FOURTH TIME

For the fourth time this season, and the fifth time in her career, senior All-America forward **Jacqueline Batteast** has been selected as the BIG EAST Conference Player of the Week, the league office announced Monday. The 6-foot-2 wing also was tapped for the honor on Nov. 22, Dec. 20 and Jan. 24, and she is the first player this season to be named BIG EAST Player of the Week four times.

In addition, Batteast is only the second Notre Dame player ever to garner the league's top weekly award four times in the same season, joining 2001 consensus National Player of the Year Ruth Riley, who also earned four awards in 2000-01. Batteast's five career BIG EAST Player of the Week selections tie her with Katryna Gaither (1993-97) for the second-most in school history — Riley had nine from 1997-2001.

Batteast averaged 21.5 points, 9.0 rebounds and 4.5 assists per game last week, as the Irish stretched their winning streak to a season-long nine games. At Providence on Feb. 9, she posted her sixth double-double of the year (38th of her career) with game highs of 23 points and 10 rebounds in a 75-57 Notre Dame victory. Three days later at home against Georgetown, she rolled up a game-best 20 points, along with eight rebounds and five assists as the Irish led all the way in a 72-58 conquest of the Hoyas. In that game, Batteast also moved into fourth place on Notre Dame's career scoring list with 1,765 points, passing former teammate Alicia Ratay (1,763 points from 1999-2003).

For the season, Batteast is second in the BIG EAST in scoring (18.0 ppg.), and also ranks among the conference leaders in rebounding (10th - 6.6 rpg.), assists (14th - 3.04 apg.), free throw percentage (2nd - .829), double-doubles (6th - 6) and 20-point games (2nd - 10).

THE QUICK DISH

With apologies to ESPN.com's Melanie Jackson, Notre Dame has its own true "Quick Dish" in junior guard **Megan Duffy**. During the past 12 games (starting with the first matchup vs. Syracuse on Jan. 5), Duffy is averaging 7.0 assists per game, with at least five handouts in 11 of 12 contests. In that time, she also has posted a sharp 2.40 assist/turnover ratio (84 assists, 35 turnovers).

And lest you think these numbers have been piled up against Podunk Tech, Notre Dame has played five ranked opponents (No. 16 Connecticut, No. 20 Purdue, No. 6/7 Rutgers, No. 9/10 Connecticut and No. 16/13 Boston College) in that 12-game span, and Duffy has averaged 6.8 assists per game with a 1.70 assist/turnover ratio (34 assists, 20 turnovers) against those top-25 squads.

THE SEASON FOR SHARING

One of the key elements in Notre Dame's success this season has been its penchant for distributing the ball well. In fact, the Irish have 426 assists (17.04 apg.; second in the BIG EAST and 21st in the nation as of Feb. 8) on 627 field goals made (25.1 per game), including a Preseason WNIT-record 29 handouts in the season opener vs. Illinois State.

Junior guard **Megan Duffy** leads the way at 5.64 assists per game (second in the BIG EAST and 26th in the nation), with at least five dimes in 16 contests this year, including a career-high 11 assists vs.



**NOTRE DAME LEADS IN
USSA DIRECTORS' CUP
STANDINGS**

The University of Notre Dame remains in first place in the final set of fall sports standings released in the 2004-05 United States Sports Academy Division I Directors' Cup all-sports competition sponsored by the National Association of Collegiate Directors of Athletics (formerly known as Sears Directors' Cup).

This marks the first season in the 12-year history of the program that Notre Dame has ranked number one. The previous highest ranking for the Irish was second in the 2004-05 second set of fall standings.

Fall NCAA competition earned the Irish 337 points based on their NCAA title in women's soccer (100 points), their fourth-place finish in women's cross country (80 points), their 11th-place finish in men's cross country (57 points) and their second-round NCAA appearances in both men's soccer and volleyball (50 points each).

Michigan (333 points) is second, highlighted by a quarterfinal appearance in field hockey and a sixth-place finish in women's cross country. Stanford (332 points) stands third, thanks to its NCAA title in volleyball. Duke (327) is fourth after runner-up NCAA finishes in women's cross country and field hockey.

The current standings include results from NCAA fall competition in football, volleyball, field hockey, water polo, men's and women's cross country, and men's and women's soccer.

The first set of winter standings will be available March 24.

In previous years in which the Directors' Cup competition has been held, Notre Dame has finished 11th in 1993-94, 30th in 1994-95, 11th in 1995-96, 14th in 1996-97, tied for 31st in 1997-98, 25th in 1998-99, 21st in 1999-2000, 11th in 2000-01, 13th in 2001-02, tied for 13th in 2002-03 and 19th in 2003-04.

Here are the current standings:

1.	NOTRE DAME	337
2.	Michigan	333
3.	Stanford	332
4.	Duke	327
5.	UCLA	297
6.	Maryland	280
7.	Ohio State	276
8.	Colorado	275
9.	Texas	262
10.	Wisconsin	251

AGAINST THE BEST

Notre Dame has four wins over top-10 opponents this season, tying for the most in the nation (through Feb. 13 vs. teams in either poll):

School	Top 10 Wins
NOTRE DAME	4
Penn State	4
Rutgers	4
several with	2

Notre Dame also has six victories over top-25 opponents this year, tying for the fourth-highest total in the country. In fact, there are only seven schools that currently have at least five top-25 wins on their resume:

School	Top 25 Wins
Duke	9
Michigan State	7
Ohio State	7
NOTRE DAME	6
LSU	6
Penn State	6
Tennessee	6

Rutgers on Jan. 23. Duffy also is second in the BIG EAST with 6.75 apg. in conference play.

ROAD WARRIORS

The Irish are 9-1 on the road this season, a far cry from last year's struggles away from the Joyce Center, when they lost their first four and six of their first seven true road contests. In fact, Notre Dame won its first five road games this year, marking only the second time in school history the Irish opened with five or more road victories (they won 10 in a row to begin the 2000-01 campaign).

Accenting Notre Dame's play on the road has been its defensive prowess. The Irish are holding opponents to 53.3 ppg., a .332 field goal percentage (185-for-557) and a .232 three-point percentage (42-for-181) away from home and have allowed more than 60 points only once in their 10 road games this year (61 by Syracuse on Jan. 19, although SU needed a Rochelle Coleman bucket with five seconds left to reach the mark).

PINE TIME PLAYERS

Notre Dame is 15-0 this year (6-0 vs. BIG EAST Conference opponents) when its bench outscores the opposition's reserves. For the season, the Irish understudies are averaging 17.4 ppg., compared to 14.3 ppg. for Notre Dame opponents. Freshman guard **Charel Allen** has been the top Irish reserve this season, logging 8.1 ppg.

Notre Dame's bench play has been especially important during its current nine-game winning streak. The Irish are getting an average of 22.7 ppg. from their reserves in that stretch, compared to 15.2 ppg. from the opposition's bench. Allen (10.8 ppg.) has been the key bench contributor during the streak with four double-figure games — 17 points at Syracuse (Jan. 19), 16 points at Pittsburgh (Feb. 5), 14 points vs. Georgetown (Feb. 12) and 11 points at No. 9/10 Connecticut (Jan. 30).

THREE-FENSE

In the past 22 games, Notre Dame has limited its opponents to a .252 three-point percentage (99-for-393), after Irish foes were shooting .333 from beyond the arc (17-for-51) in the first three games of the season. On Dec. 9, Notre Dame held Dayton to an opponent season-low .071 three-point percentage (1-for-14), with the Flyers missing their final 13 three-point attempts.

For the season, Notre Dame leads the BIG EAST in three-point percentage defense, holding opponents to a .262 mark (116-for-442) from long range.

THE FIVE-FINGER DISCOUNT

Notre Dame ranks second in the BIG EAST Conference in steals this season, averaging 9.56 thefts per game (239 total). The Irish have come up with at least 10 steals in 10 games and had a season-best 20 thefts on Nov. 22 vs. Colorado State, the most by a BIG EAST team this season.

Individually, junior guard **Megan Duffy** is tops in the conference in steals (2.72 spg., 68 total), while her backcourt mate, sophomore **Breona Gray** is second on the team with 1.28 steals per game (32 total). Four other Notre Dame players have at least 20 steals this year — senior All-America forward **Jacqueline Batteast** (29), freshman guard **Charel Allen** (29), senior center **Teresa Borton** (20) and freshman guard **Tulyah Gaines** (20).

LOTS OF FREE STUFF

When given the opportunity, Notre Dame has taken advantage of its trips to the free throw line this season. The Irish are second in the BIG EAST Conference and 28th nationally (as of Feb. 8), shooting 74.3 percent from the charity stripe. In fact, they set a school record by going a perfect 18-for-18 on Nov. 30 at Valparaiso, which also matches the best mark by any team in the country this season.

Notre Dame has been led at the gift line by junior guard **Megan Duffy** (.910, 101-111), freshman guard **Charel Allen** (.833, 50-60) and senior All-America forward **Jacqueline Batteast** (.829, 102-123). Duffy currently ranks first in the BIG EAST and fourth in the nation in free throw percentage, while



2004-05 IRISH HONORS

Charel Allen (Fr., Monessen, Pa.)

BIG EAST Freshman of the Week (Feb. 7)

Jacqueline Batteast (Sr., South Bend, Ind.)

Basketball News Preseason Player of the Year
State Farm/WBCA Wade Trophy Watch List
Naismith Trophy Watch List

John R. Wooden Women's Award Watch List
Wooden Women's Award Midseason Top 20 List
Preseason All-American:

- first team (Associated Press)
- first team (*Lindy's Annual*)
- first team (*Basketball News*)
- second team (*Gballmag.com*)
- "Terrific 10" (*Street & Smith's*)
- John R. Wooden Women's Award (*top 30*)

ESPN.com top five wings in country

BIG EAST Preseason Player of the Year
Preseason first-team all-BIG EAST (*unanimous*)
Bayer Advantage® Senior CLASS Award nominee
Sportsview.tv Preseason WNIT MVP
Three-time BIG EAST Player of the Week

Megan Duffy (Jr., Dayton, Ohio)

Preseason second-team all-BIG EAST
Sportsview.tv Preseason WNIT All-Tournament Team

TOP JOYCE CENTER
CROWDS

Rk.	Date	Opponent	Result	Atten.
T1.	1/15/01	#1 Connecticut	W, 92-76	11,418*
T1.	2/24/01	Georgetown	W, 65-53	11,418*
3.	2/10/02	#16 Boston Coll.	W, 60-44	9,676
4.	3/19/01	Michigan (NCAA)	W, 88-54	9,597
5.	1/4/03	#7 Purdue	L, 54-71	9,483
6.	1/26/02	#16 Virginia Tech	W, 64-57	8,878
7.	2/14/04	Providence	W, 81-51	8,760
8.	1/13/04	#4 Connecticut	W, 66-51	8,574
9.	1/29/02	Syracuse	W, 71-46	8,571
10.	3/17/01	Alcorn St. (NCAA)	W, 98-49	8,553
11.	1/20/03	#3 Connecticut	L, 53-72	8,265
12.	1/12/92	#2 Tennessee	L, 82-85	8,134
13.	11/18/01	Valparaiso	W, 42-35	7,960
14.	1/5/02	Providence	W, 72-66	7,804
15.	2/26/02	Villanova	L, 45-48	7,785
16.	2/19/02	West Virginia	W, 72-63	7,709
17.	1/18/03	Rutgers	L, 61-64	7,697
18.	2/13/02	St. John's	W, 66-31	7,677
19.	12/9/01	USC	W, 62-49	7,595
20.	2/12/00	St. John's	W, 94-51	7,530

* indicates capacity crowd // rankings are from AP poll
Boldface indicates game played this season

Batteast is second in the conference (Allen hasn't made enough foul shots to qualify) and has shown the greatest improvement among all Irish players this season with more than a 20-percent jump from last year's career low .627 mark.

One side note about Duffy's free throw prowess — the Irish junior struggled at the line early in her freshman season, shooting just 59.3 percent (16-27) during her first 15 collegiate games. However, in the 73 games since then (Jan. 20, 2003 to present), Duffy is connecting at an .871 clip (216-248) on her foul shots. She also has made 109 of her last 120 free throws (.908) in the past 31 Irish games, dating back to Feb. 28, 2004.

McGRAW'S MILESTONES

Entering this season, Notre Dame head coach **Muffet McGraw** had the opportunity to reach three career coaching milestones. Here's a look at her progress toward each landmark:

- Winningest basketball coach at Notre Dame — picked up 394th victory with the Irish on Dec. 19 at Marquette, passing longtime men's coach Digger Phelps (393 wins from 1971-91).
- 400th victory at Notre Dame — registered 400th win at Notre Dame on Jan. 23 vs. Rutgers (current record: 406-152, .728)
- 500th victory overall — needs six wins (current record: 494-193, .719)

BATTEAST NAMED TO WOODEN AWARD MIDSEASON TOP 20 LIST

Senior All-America forward **Jacqueline Batteast** has been named to the John R. Wooden Women's Award Midseason Top 20 List, recognized the leading candidates for the honor that goes to the nation's outstanding women's college basketball player. In March, approximately 15 finalists for the Wooden Women's Award will be placed on the voting ballot by the award's National Advisory Board, which is comprised of some of the country's leading sportswriters and sportscasters who cover women's basketball on a regular basis. Those ballots will then be mailed to more than 250 voters across the nation, with the top five vote-getters earning Wooden Award All-America honors, as well as a trip to the Wooden Award trophy presentation ceremony April 9 at the Omni Hotel in Los Angeles.

DETHRONING THE CHAMPS

Notre Dame achieved a historic basketball feat on Jan. 30, becoming the first school ever to defeat both the reigning men's and women's NCAA champions in the same season on two occasions. On that Sunday night, the Irish women ousted Connecticut, 65-59 in Storrs, a mere three hours after the Notre Dame men also toppled the Huskies, 78-74 in South Bend.

Last season, Notre Dame became just the fourth school since the inception of the NCAA women's basketball tournament in 1982 to have both its men's and women's basketball teams beat the defending national champions in the same season. The Irish women did their part by ousting Connecticut (66-51) on Jan. 13, 2004, while the Notre Dame men completed the double with an 84-72 win at Syracuse on Feb. 16, 2004.

The only other schools that can lay claim to this accomplishment are Duke (1998-99), Tennessee (1999-2000), Michigan State (1999-2000) and North Carolina (2004-05), with Notre Dame, Michigan State and UNC being the only institutions to turn the trick in the regular season (Duke's women beat Tennessee in the '99 NAAs, while Tennessee's men downed Connecticut in the '00 NAAs).

THE GEORGETOWN RECAP

Senior All-America forward **Jacqueline Batteast** had a game-high 20 points and eight rebounds as No. 6/7 Notre Dame recovered from nearly squandering a 17-point lead, beating Georgetown 72-58 Saturday afternoon at the Joyce Center for its ninth straight win.

Georgetown (9-13, 4-7 BIG EAST), which trailed 31-14 with five minutes to go in the first half, cut the lead to 35-30 early in the second half on a basket by Varda Tamoulianis. Later in the half the Hoyas closed to 42-39 when Mary Lisicky hit a three-pointer. Lisicky closed the gap to 43-41 when she made a pair of free throws with 12:41 left.

But Batteast dribbled around a crowd in the lane and drove the baseline to spark a 17-4 run by the Irish (22-3, 10-2). Batteast and freshman guard **Charel Allen** scored six points each during the spurt. Junior guard **Megan Duffy**, who had 17 points and seven assists, capped the run with a pair of free throws to give the Irish a 60-45 lead with 6:34 left.

Batteast moved into fourth place on Notre Dame's all-time scoring list with 1,765 points, two points ahead of Alicia Ratay. Ruth Riley, who led the Irish to a national championship in 2001, is third with 2,072 points.



Senior center **Teresa Borton** added 14 points and had a career-high 12 rebounds for her fourth career double-double as the Irish outrebounded Georgetown 42-21. The Irish dominated inside, outscoring the Hoyas 30-22. Allen added 14 points for Notre Dame.

Lisicky led Georgetown with 16 points. Kate Carlin added 11 points and Bethany LeSueur had 10. Kieraah Marlow, Georgetown's leading scorer and rebounder at 13.2 points and 9.0 rebounds a game, was held to six points and five boards in 32 minutes.

The Irish used an 18-6 run to open their 31-14 lead when Batteast scored on a running 10-foot jumper down the lane. But the Hoyas, who made just five of their first 20 shots, made their last five of the first half during a 12-4 run. A three-pointer by Kristin Heidloff from a step across halfcourt just before the buzzer cut Notre Dame's lead to 35-26 at the break.

NOTING THE GEORGETOWN WIN

- Notre Dame's nine-game winning streak is its longest since another nine-game run from Jan. 26-Feb. 23, 2002.
- The 22 wins this season are the most for the Irish since they won 34 times in 2000-01.
- The Georgetown victory also was Notre Dame's 10th in BIG EAST play, marking the 13th consecutive season that the Irish have posted double-digit conference wins (10 in the BIG EAST, three in the Midwestern Collegiate Conference).
- Notre Dame is 19-2 all-time against Georgetown, including a 10-0 record at home. The Irish also have scored at least 70 points in 16 of 21 career games vs. the Hoyas.
- Notre Dame improves to 17-0 this season when leading at halftime, 10-0 when it shoots 45 percent or better from the field, 12-1 when scoring at least 70 points and 16-1 when limiting the opposition to less than 60 points.
- The Irish had four double-digit scorers for the ninth time this year and are 12-1 when at least three players wind up in double figures.
- For the second consecutive game, Notre Dame held its opponent to a season-low rebounding total (45 total rebounds allowed in past two games).
- During their current winning streak, the Irish have shot better than 40 percent in all nine games, while keeping the opposition under that figure seven times.
- In addition to moving into fourth place on Notre Dame's career scoring list (1,765 points, passing former teammate Alicia Ratay), senior All-America forward **Jacqueline Batteast** collected her 10th 20-point game of the season (31st career), her 22nd double-figure scoring game of the year (94th career) and fifth five-assist game of the season (14th career).
- Senior center **Teresa Borton** notched her second double-double of the year (fourth of her career) with 14 points and a career-high 12 rebounds, the latter mark breaking the old standard of 11 she had set on four occasions (most recently at Connecticut on Jan. 30). Borton has scored in double figures 11 times this season (35 career), including four consecutive games and five times in the past six outings.
- Junior guard **Megan Duffy** matched her season-high totals at the foul line, going 9-for-10 (also vs. Duke on Nov. 17). Duffy also dished out at least five assists for the 11th time in the past 12 games, recording 7.0 apg. with a 2.40 assist/turnover ratio (84 assists, 35 turnovers) in that stretch. Duffy has 17 five-assist games this year (34 career).
- Freshman guard **Charel Allen** delivered a career-high four assists, one more than her previous best which she had set on five occasions (most recently at Pittsburgh on Feb. 5). Allen posted her seventh double-digit scoring game of the season and third in the past five contests.

HALF AND HALF

Over the past five seasons, Notre Dame has been nearly unbeatable when it has the lead at halftime. The Irish are 94-7 (.931) since the start of the 2000-01 campaign when they go into the dressing room with the lead. Notre Dame is 17-0 in such games this season, including a 7-0 record in BIG EAST Conference play.

THE BEST OFFENSE IS A GOOD DEFENSE ...

During the past decade, Notre Dame has discovered that a solid defensive effort can almost certainly guarantee a victory. In fact, since the beginning of the 1995-96 season (Notre Dame's first in the BIG EAST Conference), the Irish have an amazing 145-8 (.948) record when they hold their opponents to less than 60 points in a game, including a 16-1 mark this season (8-1 in BIG EAST games, including a 5-0 record in their last five games).

2004-05 IRISH TRENDS

Day of the Week	
Sunday	6-1
Monday	1-0
Tuesday	1-0
Wednesday	6-1
Thursday	2-1
Friday	2-0
Saturday	4-0
Time of Game	
Day games (before 6 p.m local time)	7-1
Night games (6 p.m. or later local time)	15-2
Location	
Home games	13-2
Road games	9-1
Neutral site games	0-0
Halftime score	
Leading at the half	17-0
Trailing at the half	5-3
Tied at the half	0-0
Rebounding margin	
Grab more rebounds than opponents	14-2
Grab fewer rebounds than opponents	7-1
Grab same number of rebounds as opponents	1-0
Field goal shooting	
Higher pct. than opponent	21-1
Lower pct. than opponent	1-2
Shoot 45% or better	10-0
Shoot less than 45%	12-3
Hold opponent under 40%	17-2
Free throw margin	
Make more free throws	19-1
Make fewer free throws	2-2
Make same number of free throws	1-0
Turnovers	
Commit fewer turnovers	13-1
Commit more turnovers	7-2
Commit same number of turnovers	2-0
Miscellaneous	
Vs. Top 25 (AP or ESPN/USA Today polls)	6-2
On television	8-3
In white jerseys	13-2
In blue jerseys	9-1
In green jerseys	0-0
In overtime games	0-1
Margin of Victory	
1-5 points	3-1
6-10 points	4-1
11-15 points	4-0
16-20 points	6-1
21+ points	5-0
Conference Affiliation	
BIG EAST	10-2
Atlantic Coast	1-0
Atlantic 10	1-0
Big Ten	2-1
Big 12	1-0
Conference USA	1-0
Mid-American	1-0
Mid-Continent	1-0
Missouri Valley	1-0
Mountain West	1-0
Pac-10	2-0
Month	
November	7-0
December	4-1
January	7-2
February	4-0
March	0-0



2004-05 IRISH INSIGHTS

- At times this year, some members of the Irish women's basketball team have attached a tiny medallion to their shoestrings with an engraving of the Guardian Angel on one side, while the other features an etching of St. Michael (a saint believed to protect warriors and guide them to victory in battle). The medallion was presented to them by a campus priest just before the start of the season.
- For the first time in the 28-year history of the Notre Dame women's basketball program, a player will wear jersey No. 1 (**Tulyah Gaines**) and No. 2 (**Charel Allen**) this season. The only remaining NCAA-approved jersey numbers an Irish player has never worn are No. 51, No. 53 and No. 54.
- Junior guard **Megan Duffy** does most things in her life right-handed, including eating, writing and swinging a golf club (she was a four-time all-city selection in high school). About the only thing she does left-handed? Shoot a basketball, which she's done quite well for the Irish for the past two seasons.
- Two Irish players — senior **Jacqueline Batteast** and junior **Courtney LaVere** — have designs on entering the broadcasting industry when their playing days are over. In fact, LaVere spent this past summer as an intern in the sports department at WNDU-TV, the NBC affiliate in South Bend.
- A close look at the shoes of sophomore guard **Breona Gray** may reveal the words "Big Granny." Gray has dedicated this season to the memory of her late grandmother, Viola Johnson, whom she and her family affectionately knew as "Big Granny."
- Senior center **Teresa Borton** has developed into an accomplished amateur photographer during her stay at Notre Dame. In fact, on more than one occasion, Borton has been spotted among the crowd of shutterbugs on the baseline at Irish men's basketball games.

... BUT SOMETIMES YOU HAVE TO SCORE IF YOU WANT TO WIN

Not resting solely on its defensive laurels, Notre Dame also seemingly has found the magic mark when it comes to outscoring its opponents. Over the past decade (1995-96 to present), the Irish are 90-3 (.968) when they score at least 80 points in a game. The only blemishes on that record are a pair of overtime losses to Texas A&M (88-84) and Michigan State (87-83) in 1995 and a 106-81 loss to Connecticut in 1998. Notre Dame has tacked two more wins onto that ledger with its victories this season over Illinois State and Purdue.

NOTRE DAME AMONG RECENT WINS LEADERS

Notre Dame has won 224 games over the past nine seasons, which is the sixth-most wins of any school in the country during that time. Here's where the Irish rank in terms of their wins since the start of the 1996-97 campaign (totals through games of Feb. 13):

TEAM	'96-'97	'97-'98	'98-'99	'99-'00	'00-01	'01-'02	'02-03	'03-04	'04-05	Total
1. Connecticut	33	34	29	36	32	39	37	31	16	287
2. Tennessee	29	39	31	33	31	30	33	31	19	276
3. Louisiana Tech	31	31	30	31	31	25	31	29	15	253
4. Duke	19	24	29	28	30	31	35	30	23	249
5. Old Dominion	34	29	28	29	21	28	21	25	14	229
6. NOTRE DAME	31	22	26	27	34	20	21	21	22	224
7. Purdue	17	23	34	23	31	24	29	29	13	223
8. Santa Barbara	24	27	26	30	22	26	27	27	13	222
9. Texas Tech	20	26	30	28	25	20	29	25	17	220

SWEET SUCCESS

Notre Dame is one of only five schools in the country to have appeared in the NCAA Sweet Sixteen six times in the past eight seasons (1997-2004). The others are Connecticut (eight times), Tennessee (eight times), Duke (seven times) and Louisiana Tech (seven times).

THE GOLD STANDARD

Having clinched their 12th consecutive 20-win season with a 75-47 victory at Pittsburgh on Feb. 5, the Irish are one of just six teams nationwide to have an active streak of at least 11 consecutive 20-win seasons. The others in these elite club are Tennessee (28), Texas Tech (15), Louisiana Tech (13), Old Dominion (13) and Connecticut (11), none of whom have 20 wins yet this year (through Feb. 13).

NOW THAT'S A HOME COURT ADVANTAGE

One of the hallmarks of Notre Dame's success has been its stellar play at home. In fact, the Irish have been virtually untouchable at home in recent years, winning 126 of their last 137 games (.920) at the 11,418-seat Joyce Center. Notre Dame also has a 75-8 (.904) home record in BIG EAST play.

The Irish have been particularly strong when it comes to non-conference games at home, winning 54 of their last 57 non-BIG EAST contests (.947) at the Joyce Center, dating back to the 1994-95 season. The only three losses in that span all came against Big Ten Conference teams — Wisconsin in 1996 (81-69), Purdue in 2003 (71-54) and Michigan State in 2004 (82-73 in OT).

Since its inaugural season in 1977-78, Notre Dame has played all of its games at the Joyce Center, posting a 276-72 (.793) record at the venerable facility. In three of the past five seasons (1999-2000, 2000-01 and 2003-04), the Irish were a perfect 15-0 at home, setting a school record for home wins in a season.

JAMMIN' THE JOYCE

Beginning with its national championship season of 2000-01, Notre Dame has ranked in the top 15 in the nation in attendance each of the past four years, and current returns indicate this season may be no different. According to the Feb. 14 unofficial national attendance rankings (as compiled by the University of Wisconsin Sports Information Office), Notre Dame is 15th in the nation with an average of 5,690 fans per game.

All of the top 20 crowds in the Irish record book have occurred during the 18-year tenure of head coach **Muffet McGraw** (1987-present). And, as more evidence of Notre Dame's rapid elevation to "hot ticket" status in South Bend, 19 of the top 20 crowds in school history have been recorded in the past six seasons (1999-2000 to present), including 12 audiences of 8,000 or more fans, and 64 of the past 66 home games with at least 5,000 fans filing into the Joyce Center.



NOTRE DAME ON THE SMALL SCREEN

The Irish are scheduled to make at least 13 appearances on regional or national television during the 2004-05 season (additional broadcasts may be announced at a later date).

Notre Dame made its TV debut this season on Nov. 20 when it defeated No. 10/9 Ohio State, 66-62 in the championship game of the Sportsview.tv Preseason WNIT. That contest was shown globally via broadband Internet connection at www.sportsview.tv, as well either live or delayed on several Comcast SportsNet outlets nationwide. The American Forces Network, which broadcasts to more than one million U.S. service men and women in 176 countries, also aired the game.

The Irish returned to the airwaves Dec. 2 when they dropped an 82-73 overtime decision to No. 15 Michigan State on College Sports Television (CSTV). That was the first of three Notre Dame games that will air nationally on the fledgling cable network, which has signed an agreement with the BIG EAST Conference to carry a national women's basketball Game of the Week eight times in 2004-05. The Irish also lost to No. 16 Connecticut, 67-50 on Jan. 12 at the Joyce Center and will play at Boston College Tuesday night in front of the CSTV cameras.

In addition, Notre Dame will play twice on ESPN2 this year. On Jan. 16, the Irish downed No. 20 Purdue, 86-69 in the BIG EAST/Big Ten Challenge at the Joyce Center. Two weeks later on Jan. 30, Notre Dame was back on ESPN2 as it defeated No. 9/10 Connecticut, 65-59 at Gampel Pavilion.

The BIG EAST also added two Irish games to its regional television package this season. Notre Dame lost at Villanova, 59-54 on Jan. 9 and defeated No. 6/7 Rutgers, 63-47 on Jan. 23, both on BIG EAST Television. Among those affiliates carrying the BETV package are Comcast SportsNet outlets in Chicago, Philadelphia and the Mid-Atlantic region, as well as Fox Sports Net outlets in New York, New England and Pittsburgh.

Detroit-based Comcast Local (Channel 3 on Comcast cable systems in South Bend) is the latest television outlet to select Notre Dame women's basketball games for broadcast. The newly-formed network will air five Irish games this season — at USC (Nov. 26), and home games vs. Washington (Dec. 11), St. John's (Jan. 26), Georgetown (Feb. 12) and West Virginia (Feb. 26) — with former Irish All-America center, WNBA champion and 2004 Olympic gold medalist Ruth Riley slated to provide color commentary on the final three broadcasts.

NOTRE DAME ON THE AIRWAVES

Once again this season, every Irish women's basketball game (home and away) airs on the flagship stations of the Artistic Media Partners (AMP) Network — WDND-AM (ESPN Radio 1580) and WNDV-AM (1490) in South Bend. Veteran broadcaster and AMP sports director Sean Stires is now in his fifth season handling the play-by-play for Notre Dame. The Irish also can be heard on the Internet at Notre Dame's official athletics web site (www.und.com) by subscribing to College Sports Pass, which gives listeners full multimedia access to a variety of Irish athletics events for only \$6.95 per month.

OH CAPTAIN, MY CAPTAIN

For the fourth time in school history (all during the **Muffet McGraw** era), Notre Dame will have three players sharing the captain's duties this year. Senior forward **Jacqueline Batteast**, senior center **Teresa Borton** and junior guard **Megan Duffy** all were accorded the honor based upon a vote of their teammates prior to the season. All three are serving as captains for the first time in their respective careers.

IRISH ADD TWO PLAYERS DURING EARLY SIGNING PERIOD

Notre Dame head coach **Muffet McGraw** has announced that **Lindsay Schrader**, a 6-0 guard from Bartlett, Ill., and **Chandrica Smith**, a 6-1 forward from Stone Mountain, Ga., have chosen to continue their careers with the Irish, signing National Letters of Intent to attend Notre Dame beginning in the fall of 2005.

With the additions of Schrader and Smith, Notre Dame's newest recruiting class is ranked 16th in the nation by *Blue Star Index*. That marks the ninth consecutive year the Irish have had a top-20 class, according to that publication, which makes Notre Dame one of only three schools in the nation that can claim that distinction (Connecticut and Tennessee are the others).

Schrader has been widely regarded as one of the top all-around players in the state of Illinois while attending Bartlett High School the past three seasons. She is a three-time all-state selection, a two-time Illinois Miss Basketball finalist, and a two-time *Street & Smith's* All-America selection who has averaged 20.1 points, 9.8 rebounds, 3.1 steals and 1.8 blocks per game in her prep career. Her finest all-around season came as a junior in 2003-04, when she averaged 20.8 ppg., 10.8 rpg. and 2.0 bpg. while earning first-team all-state honors from the Associated Press, *Chicago Tribune* and *Champaign*

GRADUATION RATES

The University of Notre Dame ranks second among Division I-A institutions in five major student-athlete graduate rate categories — overall, football, men, women and African-American — according to the latest statistics released in October by the NCAA.

The federally mandated 2004 NCAA Graduation Rates Report, the 14th such survey issued by the association, covers students who enrolled between 1994 and 1997 at Division I institutions, including 117 in Division I-A. The NCAA bases graduation rates on the raw percentage of student-athletes who entered an institution and graduated within six years. Students who leave or transfer, regardless of academic standing, are considered non-graduates.

Among student-athletes who completed all four years of athletic eligibility at Notre Dame, 99 percent earned their degrees. The national average was 84 percent.

Using the NCAA formula, Notre Dame graduated a four-year average of 87 percent of its student-athletes, second only to Duke University at 90 percent, and tied with Northwestern and Stanford Universities. The national average for Division I-A schools is 61 percent.

In August 2003, the NCAA presented an Academic Achievement Award to Notre Dame for its best-in-the-nation one-year graduation rate of 92 percent for all student-athletes who enrolled in 1996.

Notre Dame also graduated 71 percent of its African-American student-athletes, ranking ninth nationally, and Irish football players graduated at a 77 percent rate, to rank eighth.

All Student-Athletes

1.	Duke	90%
2.	(tie) Notre Dame	87
	(tie) Northwestern	87
	(tie) Stanford	87

Female Student-Athletes

1.	Northwestern	96%
2.	Duke	95
3.	Notre Dame	94

Male Student-Athletes

1.	Duke	88%
2.	Stanford	84
3.	Notre Dame	82



IRISH CAREER RECORDS

Total Points

1. Beth Morgan (1993-97)	2,322
2. Katryna Gaither (1993-97)	2,126
3. Ruth Riley (1997-2001)	2,072
4. Jacqueline Batteast (2001-present)	1,765

Scoring Average

3. Ruth Riley (1997-01)	15.8
4. Jacqueline Batteast (2001-present)	15.3
5. Heidi Bunek (1985-89)	14.5

Three-Point Field Goals Made

5. Mollie Peirick (1994-98)	129
6. Lisa Kuhns (1985-90)	102
7. Jeneka Joyce (2000-04)	92
8. Megan Duffy (2002-present)	87

Three-Point Field Goals Attempted

4. Niele Ivey (1996-2001)	469
5. Mollie Peirick (1994-98)	342
6. Lisa Kuhns (1985-90)	262
7. Megan Duffy (2002-present)	243

Field Goal Percentage (min. 400 att.)

5. Krissi Davis (1987-91)	.579
6. Carrie Bates (1981-85)	.553
7. Teresa Borton (2001-pres.)	.548 (351-640)
8. Shari Matvey (1979-83)	.533

Free Throw Percentage (min. 75 att.)

1. Alicia Ratay (1999-2003)	.872
2. Megan Duffy (2002-present)	.844 (232-275)
3. Mollie Peirick (1994-98)	.819
4. Beth Morgan (1993-97)	.814

Rebounds

2. Letitia Bowen (1991-95)	999
3. Katryna Gaither (1993-97)	986
4. Jacqueline Batteast (2001-present)	911

Rebounding Average (min. 6.5 per game)

1. Letitia Bowen (1991-95)	8.8
2. Mary Beth Schueth (1981-85)	8.1
3. Jacqueline Batteast (2001-present)	7.9
4. Heidi Bunek (1985-89)	7.8

Blocked Shots

1. Ruth Riley (1997-2001)	370
2. Amanda Barksdale (1999-2002)	170
3. Jacqueline Batteast (2001-present)	157
4. Katryna Gaither (1993-97)	141
5. Teresa Borton (2001-present)	136
6. Shari Matvey (1979-83)	133

Double-Doubles

1. Katryna Gaither (1993-97)	40
2. Jacqueline Batteast (2001-present)	38
3. Ruth Riley (1997-2001)	36

Boldface indicates current players

News-Gazette. She also was a sixth-team All-America selection by *Street & Smith's* and was a finalist for Illinois Miss Basketball honors, an award she will likely contend for once again this season.

On the summer camp circuit, Schrader was an Underclass All-Star at the 2002 adidas Top Ten Camp, before attending the Nike All-America Camp in both 2003 and 2004. She is ranked among the top 30 high school seniors in the nation by three separate recruiting services — *Blue Star Index* (14th), *All-Game Sports* (21st) and *All-Star Girls Report* (26th overall — eighth among shooting guards).

In addition, Schrader made a significant impact at the 2004 USA Basketball Youth Development Festival in Colorado Springs. Playing for the North Team that won the silver medal, she ranked third at the Festival in scoring (14.8 ppg.) and rebounding (8.6 rpg.), as well as second in field goal percentage (.542). All three figures were team highs, as were her 2.2 steals per game. For her efforts, Schrader was invited to attend the 2004 USA Women's Junior World Championship Qualifying Team Trials, where she was one of 17 finalists for the 12-player team that won the gold medal this past August.

Smith currently attends Oak Hill Academy in Mouth of Wilson, Va., where she transferred prior to her senior season. Previously, she was a standout at Stephenson High School in Stone Mountain, Ga., where she averaged 12.5 points, 8.1 rebounds, 3.5 steals and 2.4 blocks per game with a .620 field goal percentage. She also was a key component in the Jaguars' run to a 32-1 record and the Georgia 5A state championship last year. In fact, during her first three prep seasons, her teams posted a combined 89-7 (.927) record with three trips to the Georgia state championship and one state title.

Smith herself has received numerous accolades during her high school career. She is a two-time honorable mention All-America selection by *Street & Smith's* and was a *Student Sports* All-American in 2004. In addition, she attended the adidas Top Ten Camp three consecutive years and was named to its prestigious all-star team all three years (Underclass All-Star in 2002 & 2003; Upperclass All-Star in 2004). Last season, she was an honorable mention 5A all-state selection and a first-team all-county choice. She is ranked as high as 29th in the nation among high school seniors by *All-Star Girls Report*.

Like Schrader, Smith also attended the 2004 USA Basketball Youth Development Festival in Colorado Springs. Playing for the South Team, she averaged 5.4 points and 2.6 rebounds per game, scoring a personal-best 13 points in the bronze-medal game victory over the East squad.

MUFFET MCGRAW SIGNS CONTRACT EXTENSION THROUGH 2010-11 SEASON

On Nov. 6, Notre Dame announced that **Muffet McGraw** has signed a two-year extension to continue as head coach of the Notre Dame women's basketball program through the 2010-11 season.

McGraw, who is now in her 18th season with the Irish, most recently signed a four-year contract extension in July 2002 that took her through the 2008-09 season. Her first 17 seasons at Notre Dame have been highlighted by 15 20-win campaigns (including a current string of 11 straight), 11 NCAA tournament appearances (including a current streak of nine straight) and the 2001 NCAA title. Entering the 2004-05 season, she had a 384-149 (.720) record at Notre Dame.

In 2003-04, McGraw skillfully guided her team to a 21-11 record and a second consecutive berth in the NCAA Sweet Sixteen (the fourth for the Irish in five years). McGraw's charges placed second in the BIG EAST Conference, their eighth top-two finish since joining the league nine years ago. In addition, the Irish went 15-0 at home, their third perfect record at the Joyce Center in the past five seasons, and extended their overall home win streak to 20 games, the second-longest in school history and eighth-longest active string in the nation heading into the 2004-05 campaign.

McGraw has continued to enhance her reputation as one of the nation's outstanding big-game coaches and tacticians, piloting Notre Dame to a school-record seven wins over top 25 teams during the 2003-04 regular season. During her 17-year tenure with the Irish, McGraw has compiled 40 victories over nationally-ranked opponents, including 30 in the past six seasons (an average of five per year).

Under McGraw's guidance, the past nine years have been the most successful in Notre Dame's history as the Irish have compiled an impressive 225-69 (.765) record, including a sparkling 124-28 (.816) regular-season mark in BIG EAST play, the best winning percentage in league history. Notre Dame also has averaged 25 victories per campaign during that span, with two 30-win seasons to its credit. The Irish have won at least one NCAA tournament game every season over that time, advancing to the Sweet Sixteen six times (1997, 1998, 2000, 2001, 2003, 2004) and the Final Four twice (1997 and 2001).

PROMOTIONAL CORNER

Here's a rundown of some upcoming promotions and giveaways at future Notre Dame women's basketball games this season:

- Feb. 26 vs. West Virginia — Notre Dame women's basketball beanbag bears (first 1,000 fans)



NEXT GAME: RUTGERS

Notre Dame wraps up an important two-game BIG EAST road swing Saturday with a noon (ET) game at Rutgers. It's the second of two meetings this season between the Irish and Scarlet Knights, with Notre Dame winning the earlier matchup, 63-47 back on Jan. 23 at the Joyce Center.

Rutgers (18-5, 9-2 BIG EAST), which is ranked 10th in this week's Associated Press poll, joins Notre Dame as two of the three teams in the country with four victories over top-10 opponents this season. The Scarlet Knights' latest highly-ranked victim was (then) No. 10 Connecticut, which Rutgers defeated by a 76-62 count this past Sunday in Piscataway. With that win, the Scarlet Knights moved into a tie with the Huskies for second place in the BIG EAST, one-half game behind Notre Dame. RU is slated to play at Syracuse Wednesday night before returning home to entertain the Irish this weekend.

Rutgers leads the all-time series with Notre Dame, 11-9, including a 6-3 advantage at the Louis Brown Athletic Center in Piscataway. The teams have split their last 10 matchups, although the Scarlet Knights have won two of the past three times they have played host to the Irish.

NCAA AND BIG EAST STATISTICAL LEADERS

Here's where the Irish players and team stand in the most recent NCAA statistics report (through games of February 7) and BIG EAST Conference statistics report (through games of February 14) — **bold** indicates league/national leaders:

Team Rankings	NCAA	BIG EAST (all games)	BIG EAST games only
Scoring Offense		4th at 68.7	3rd at 66.1
Scoring Defense		5th at 57.2	5th at 55.7
Scoring Margin		4th at +11.4	3rd at +10.4
FT Percentage	28th at .746	2nd at .743	4th at .704
FG Percentage		5th at .443	4th at .440
FG Percentage Defense	11th at .346	2nd at .349	2nd at .339
3-Point FG Percentage		4th at .371	3rd at .347
3-Point FG Pct. Defense	not kept	1st at .262	2nd at .288
Rebounding		4th at 38.9	2nd at 39.3
Rebounding Defense	not kept	8th at 36.1	7th at 35.7
Rebounding Margin		5th at +2.8	4th at +3.6
Blocked Shots	27th at 5.0	2nd at 5.0	2nd at 4.67
Assists	21st at 16.9	2nd at 17.04	2nd at 16.83
Steals		2nd at 9.56	2nd at 9.17
Turnover Margin	not kept	3rd at +2.40	4th at +1.67
Assist/Turnover Ratio	not kept	3rd at 1.07	5th at 1.07
Individual Rankings	NCAA	BIG EAST (all games)	BIG EAST games only
Scoring		Batteast, 2nd at 18.0	Batteast, 2nd at 16.5
		Duffy, 18th at 11.5	
Rebounding		Batteast, 10th at 6.6	Borton, 11th at 6.5
		Borton, 13th at 6.2	Batteast, 15th at 5.8
FG Percentage		Batteast, 5th at .443	Batteast, 9th at .424
Assists	Duffy, 26th at 5.6	Duffy, 2nd at 5.64	Duffy, 2nd at 6.75
		Batteast, 14th at 3.04	
FT Percentage	Duffy, 4th at .911	Duffy, 1st at .910	Duffy, 1st at .898
		Batteast, 2nd at .829	Batteast, 5th at .800
Steals		Duffy, 1st at 2.72	Duffy, 1st at 2.67
3-Point FG Per Game		Duffy, 14th at 1.36	
Blocked Shots		Borton, 3rd at 1.72	Borton, 4th at 1.67
		Batteast, 7th at 1.32	Batteast, 6th at 1.42
Assist/Turnover Ratio		Duffy, 5th at 2.01	Duffy, 3rd at 2.31
		Batteast, 9th at 1.52	

NEXT BIG EAST COACHES TELECONFERENCE SLATED FOR MARCH 3

The BIG EAST Conference women's basketball coaches will hold three media teleconferences during the 2004-05 season, the last of which is scheduled for Thursday, March 3, prior to the start of the BIG EAST Championship. Each of the 12 league head coaches will be available for 5-10 minutes in a pre-arranged format.

Media representatives wishing to participate in the teleconference should contact Notre Dame assistant SID **Chris Masters** (574-631-8032) or BIG EAST director of communications/women's basketball contact **Rachel Margolis** (401-453-0660) for the teleconference phone number.

Here is a complete listing of the times when each BIG EAST coach will be available (all times Eastern and subject to change):

- 11:00 a.m. - Mike Carey, West Virginia
- 11:07 a.m. - Phyllis Mangina, Seton Hall
- 11:14 a.m. - Cathy Inglese, Boston College
- 11:21 a.m. - Susan Yow, Providence
- 11:28 a.m. - Terri Williams-Flournoy, Georgetown
- 11:35 a.m. - Muffet McGraw, Notre Dame**
- 11:42 a.m. - Agnus Berenato, Pittsburgh
- 11:49 a.m. - Harry Perretta, Villanova
- 11:56 a.m. - Kim Barnes-Arico, St. John's
- 12:03 p.m. - Keith Cieplicki, Syracuse
- 12:10 p.m. - Geno Auriemma, Connecticut
- 12:20 p.m. - C. Vivian Stringer, Rutgers

NOTRE DAME VS. BOSTON COLLEGE

2004-05 University of Notre Dame Women's Basketball Results

Overall Record: 22-3 (Home: 13-2, Away: 9-1, Neutral: 0-0); BIG EAST Conference Record: 10-2

----- Notre Dame Highs -----											
Date	ND NR	Opp NR	Opponent	Time/Result	Streak	Record	BEC	Scorer	Rebounder	Assists	Attendance
Nov. 12	10/11		(1) ILLINOIS STATE	W 92-73	W1	1-0		LaVere-18	three with 6	Duffy-8	6,190
Nov. 14	10/11		(1) NEBRASKA	W 73-57	W2	2-0		Batteast-24	Borton-11	Batteast-7	5,370
Nov. 17	11/10	6/6	(1) DUKE	W 76-65	W3	3-0		Batteast-17	LaVere-11	two with 7	3,094
Nov. 20	11/10	10/9	(1) OHIO STATE (ITV)	W 66-62	W4	4-0		Batteast-32	Gray-6	Duffy-6	3,925
Nov. 22	6/6		COLORADO STATE	W 69-47	W5	5-0		Duffy-15	Batteast-9	Batteast-7	5,115
Nov. 26	6/6		at USC (COM)	W 60-56	W6	6-0		Batteast-18	three with 5	Batteast-4	3,085
Nov. 30	3/3		at Valparaiso	W 69-59	W7	7-0		Batteast-25	Batteast-10	Duffy-4	2,214
Dec. 2	3/3	15/15	MICHIGAN STATE (CSTV)	L (ot) 73-82	L1	7-1		Erwin-20	two with 9	two with 4	5,544
Dec. 9	7/5		at Dayton	W 65-39	W1	8-1		Allen-14	Batteast-7	Duffy-5	2,517
Dec. 11	7/5		WASHINGTON (COM)	W 72-58	W2	9-1		Erwin-24	Batteast-10	Duffy-10	5,407
Dec. 19	7/5		at Marquette	W 50-47	W3	10-1		Batteast-27	Batteast-10	two with 3	2,573
Dec. 30	6/4		at Northern Illinois	W 73-49	W4	11-1		Batteast-21	Gaines-7	Borton-4	2,149
Jan. 2	6/4		SETON HALL*	W 54-33	W5	12-1	1-0	Batteast-18	Erwin-8	Duffy-3	6,188
Jan. 5	4/3		SYRACUSE*	W 75-58	W6	13-1	2-0	three with 17	three with 7	Duffy-6	5,173
Jan. 9	4/3		at Villanova* (BETV)	L 54-59	L1	13-2	2-1	Batteast-22	Batteast-6	Duffy-7	1,759
Jan. 12	7/6	16/16	CONNECTICUT* (CSTV)	L 50-67	L2	13-3	2-2	Erwin-11	Borton-9	Duffy-9	6,744
Jan. 16	7/6	20/20	(2) PURDUE (ESPN2)	W 86-69	W1	14-3		Batteast-21	Batteast-11	Duffy-6	7,282
Jan. 19	11/10		at Syracuse*	W 74-61	W2	15-3	3-2	Batteast-19	LaVere-10	Duffy-6	679
Jan. 23	11/10	6/7	RUTGERS* (BETV)	W 63-47	W3	16-3	4-2	Batteast-27	Erwin-9	Duffy-11	6,763
Jan. 26	6/7		ST. JOHN'S* (COM)	W 72-65	W4	17-3	5-2	two with 14	two with 10	Duffy-10	5,186
Jan. 30	6/7	9/10	at Connecticut* (ESPN2)	W 65-59	W5	18-3	6-2	LaVere-14	Borton-11	Duffy-5	10,167
Feb. 2	6/7	16/13	BOSTON COLLEGE*	W 64-57	W6	19-3	7-2	Batteast-15	two with 6	LaVere-4	6,904
Feb. 5	6/7		at Pittsburgh*	W 75-47	W7	20-3	8-2	LaVere-17	LaVere-8	Duffy-9	5,652
Feb. 9	6/7		at Providence*	W 75-57	W8	21-3	9-2	Batteast-23	Batteast-10	Duffy-5	216
Feb. 12	6/7		GEORGETOWN* (COM)	W 72-58	W9	22-3	10-2	Batteast-20	Borton-12	Duffy-7	6,461
Feb. 15			at Boston College* (CSTV)	7 p.m. ET							
Feb. 19			at Rutgers*	Noon ET							
Feb. 26			WEST VIRGINIA* (COM)	2 p.m. ET							
March 1			at Seton Hall*	7 p.m. ET							

BIG EAST Championship (Hartford Civic Center - Hartford, Conn.)

March 5	First Round	TBA
March 6	Quarterfinals (CSTV)	TBA
March 7	Semifinals (CSTV)	6/8 p.m. ET
March 8	Championship (ESPN)	7 p.m. ET

NCAA Tournament - First & Second Rounds (Campus sites TBA)

March 19-20	First Round (ESPN/ESPN2)
March 21-22	Second Round (ESPN/ESPN2)

NCAA Regionals (East - Philadelphia, Pa.; Midwest - Chattanooga, Tenn.; Midwest - Kansas City, Mo.; West - Tempe, Ariz.)

March 26-27	Semifinals (ESPN)
March 28-29	Finals (ESPN)

NCAA Final Four (RCA Dome - Indianapolis, Ind.)

April 3	National Semifinals (ESPN)
April 5	National Championship Game (ESPN)

* BIG EAST Conference game

(1) Sportsview.tv Preseason WNIT (held at campus sites)

(2) BIG EAST/Big Ten Challenge (Notre Dame, Ind.)

(ITV) Game televised live on Internet at www.sportsview.tv

(COM) Game to be televised live on Comcast Local (Detroit)

(CSTV) Game to be televised live on College Sports Television

(ESPN/ESPN2) Game to be televised live on ESPN or ESPN2

(BETV) Game to be televised live on BIG EAST Conference television package

NR - Indicates Notre Dame and opponent national rankings in the Associated Press/ESPN-USA Today polls at tipoff

CAPS indicates home game played at Joyce Center (capacity 11,418)

2004-05 ATTENDANCE

	Totals	Avg.	High
All Games:	116,357	4,654	10,167 (UC - 1/30)
Home:	85,346	5,690	7,282 (PUR - 1/16)
Away:	31,011	3,101	10,167 (UC - 1/30)
Neutral:	0	0	0

CONTE FORUM • CHESTNUT HILL, MASS.

2004-05 Notre Dame Women's Basketball Statistics — All Games

Overall Record: 22-3 (Home: 13-2, Away: 9-1, Neutral: 0-0)

Player	GP-GS	Min.-Avg.	FG-A	Pct.	3FG-A	Pct.	FT-A	Pct.	OR	DR	Tot.	Avg.	PF-DQ	A	T	B	S	Pts.	Avg.
Batteast, Jacqueline	25-25	819-32.8	167-377	.443	14-37	.378	102-123	.829	53	111	164	6.6	51-1	76	50	33	29	450	18.0
Duffy, Megan	25-25	919-36.8	76-188	.404	34-94	.362	101-111	.910	5	73	78	3.1	40-0	141	70	1	68	287	11.5
Borton, Teresa	25-25	629-25.2	93-159	.585	0-0	.000	40-61	.656	75	79	154	6.2	68-0	28	36	43	20	226	9.0
Allen, Charel	25-0	617-24.7	73-157	.465	7-12	.583	50-60	.833	39	73	112	4.5	51-1	42	50	7	29	203	8.1
LaVere, Courtney	20-7	387-19.4	65-132	.492	1-3	.333	21-39	.538	22	55	77	3.9	35-0	27	35	17	18	152	7.6
Erwin, Crystal	25-17	465-18.6	58-138	.420	0-0	.000	36-65	.554	44	60	104	4.2	61-3	24	42	7	16	152	6.1
Gray, Breona	25-25	603-24.1	55-148	.372	2-3	.667	27-39	.692	27	61	88	3.5	20-0	46	42	2	32	139	5.6
Gaines, Tulyah	21-0	277-13.2	16-47	.340	0-0	.000	18-28	.643	10	21	31	1.5	25-0	27	46	1	20	50	2.4
D'Amico, Melissa	22-0	145-6.6	19-45	.422	0-0	.000	7-16	.438	14	22	36	1.6	31-0	3	13	11	3	45	2.0
Powers, Susie	17-0	137-8.1	4-21	.190	1-10	.100	0-0	.000	5	14	19	1.1	3-0	11	5	3	4	9	0.5
Tsipis, Amanda	9-0	27-3.0	1-4	.250	0-0	.000	2-2	1.000	1	0	1	0.1	0-0	1	2	0	0	4	0.4
Team									51	58	109	4.4				7			
Notre Dame	25	5025	627-1416	.443	59-159	.371	404-544	.743	346	627	973	38.9	385-5	426	398	125	239	1717	68.7
Opponents	25	5025	512-1466	.349	116-442	.262	291-410	.710	384	518	902	36.1	441-12	317	458	89	208	1431	57.2

Deadball Rebounds: Notre Dame 65, Opponents 63

Score by Periods	1st	2nd	OT	Total
Notre Dame	818	896	3	-- 1717
Opponents	676	743	12	-- 1431

2004-05 Notre Dame Women's Basketball Statistics — BIG EAST Games

Overall Record: 10-2 (Home: 6-1, Away: 4-1)

Player	GP-GS	Min.-Avg.	FG-A	Pct.	3FG-A	Pct.	FT-A	Pct.	OR	DR	Tot.	Avg.	PF-DQ	A	T	B	S	Pts.	Avg.
Batteast, Jacqueline	12-12	385-32.1	73-172	.424	8-21	.381	44-55	.800	24	46	70	5.8	22-1	29	26	17	13	198	16.5
Duffy, Megan	12-12	443-36.9	34-88	.386	13-45	.289	44-49	.898	2	37	39	3.3	20-0	81	35	1	32	125	10.4
Borton, Teresa	12-12	319-26.6	52-85	.612	0-0	.000	16-28	.571	39	39	78	6.5	28-0	11	13	20	10	120	10.0
Allen, Charel	12-0	301-25.1	40-75	.533	4-5	.800	23-28	.821	18	36	54	4.5	20-0	18	25	0	14	107	8.9
LaVere, Courtney	12-2	240-20.0	41-80	.513	1-2	.500	9-18	.500	15	29	44	3.7	20-0	18	22	10	10	92	7.7
Gray, Breona	12-12	268-22.3	22-67	.328	0-0	.000	15-23	.652	15	24	39	3.3	3-0	17	12	1	13	59	4.9
Erwin, Crystal	12-10	211-17.6	17-58	.293	0-0	.000	24-42	.571	24	34	58	4.8	22-1	12	23	2	6	58	4.8
Gaines, Tulyah	12-0	153-12.8	7-23	.304	0-0	.000	6-13	.462	5	11	16	1.3	15-0	15	22	1	12	20	1.7
D'Amico, Melissa	10-0	44-4.4	6-11	.545	0-0	.000	2-4	.500	2	8	10	1.0	9-0	1	4	2	0	14	1.4
Powers, Susie	6-0	28-4.7	0-2	.000	0-2	.000	0-0	.000	0	3	3	0.5	0-0	0	1	2	0	0	0.0
Tsipis, Amanda	3-0	8-2.7	0-2	.000	0-0	.000	0-0	.000	1	0	1	0.3	0-0	0	2	0	0	0	0.0
Team									29	31	60	5.0				3			
Notre Dame	12	2400	292-663	.440	26-75	.347	183-260	.704	174	298	472	39.3	159-2	202	188	56	110	793	66.1
Opponents	12	2400	239-704	.339	65-226	.288	125-179	.698	193	235	428	35.7	203-7	142	208	48	102	668	55.7

Deadball Rebounds: Notre Dame 39, Opponents 29

Score by Periods	1st	2nd	Total
Notre Dame	385	408	-- 793
Opponents	330	338	-- 668

NOTRE DAME VS. BOSTON COLLEGE

2004-05 Notre Dame Women's Basketball Statistics — Home Games

Overall Record: 13-2 (BIG EAST: 6-1)

Player	GP-GS	Min.-Avg.	FG-A	Pct.	3FG-A	Pct.	FT-A	Pct.	OR	DR	Tot.	Avg.	PF-DQ	A	T	B	S	Pts.	Avg.
Batteast, Jacqueline	15-15	494-32.9	103-233	.442	5-19	.263	56-70	.800	38	67	105	7.0	26-0	52	32	25	20	267	17.8
Duffy, Megan	15-15	572-38.1	50-122	.410	25-62	.403	66-72	.917	1	45	46	3.1	23-0	94	52	0	38	191	12.7
Borton, Teresa	15-15	389-25.9	63-106	.594	0-0	.000	25-37	.676	52	45	97	6.5	38-0	18	21	28	10	151	10.1
Erwin, Crystal	15-9	301-20.1	46-93	.495	0-0	.000	26-51	.510	34	40	74	4.9	36-3	17	31	4	11	118	7.9
Allen, Charel	15-0	390-26.0	38-94	.404	4-8	.500	36-43	.837	27	44	71	4.7	28-1	28	28	6	22	116	7.7
LaVere, Courtney	13-6	234-18.0	38-80	.475	0-2	.000	16-27	.593	11	34	45	3.5	22-0	20	26	13	7	92	7.1
Gray, Breona	15-15	378-25.2	33-83	.398	2-3	.667	16-25	.640	19	37	56	3.7	14-0	31	25	0	23	84	5.6
D'Amico, Melissa	12-0	68-5.7	9-28	.321	0-0	.000	2-6	.333	10	11	21	1.8	13-0	2	6	4	2	20	1.7
Gaines, Tulyah	11-0	124-11.3	5-20	.250	0-0	.000	3-7	.429	5	11	16	1.5	13-0	17	20	0	11	13	1.2
Powers, Susie	8-0	61-7.6	1-10	.100	1-7	.143	0-0	.000	1	7	8	1.0	2-0	6	2	0	1	3	0.4
Tsipis, Amanda	6-0	14-2.3	1-2	.500	0-0	.000	0-0	.000	0	0	0	0.0	0-0	0	0	0	0	2	0.3
Team									26	31	57	3.8					3		
Notre Dame	15	3025	387-871	.444	37-101	.366	246-338	.728	224	372	596	39.7	215-4	285	246	80	145	1057	70.5
Opponents	15	3025	327-909	.360	74-261	.284	170-233	.730	239	318	557	37.1	273-6	209	279	48	137	898	59.9

2004-05 Notre Dame Women's Basketball Statistics — Road Games

Overall Record: 9-1 (BIG EAST 4-1; Away: 9-1, Neutral: 0-0)

Player	GP-GS	Min.-Avg.	FG-A	Pct.	3FG-A	Pct.	FT-A	Pct.	OR	DR	Tot.	Avg.	PF-DQ	A	T	B	S	Pts.	Avg.
Batteast, Jacqueline	10-10	325-32.5	64-144	.444	9-18	.500	46-53	.868	15	44	59	5.9	25-1	24	18	8	9	183	18.3
Duffy, Megan	10-10	347-34.7	26-66	.394	9-32	.281	35-39	.897	4	28	32	3.2	17-0	47	18	1	30	96	9.6
Allen, Charel	10-0	227-22.7	35-63	.556	3-4	.750	14-17	.824	12	29	41	4.1	23-0	14	22	1	7	87	8.7
LaVere, Courtney	7-2	153-21.9	27-52	.519	1-1	1.000	5-12	.417	11	21	32	4.6	13-0	7	9	4	11	60	8.6
Borton, Teresa	10-10	240-24.0	30-53	.566	0-0	.000	15-24	.625	23	34	57	5.7	30-0	10	15	15	10	75	7.5
Gray, Breona	10-10	225-22.5	22-65	.338	0-0	.000	11-14	.786	8	24	32	3.2	6-0	15	17	2	9	55	5.5
Gaines, Tulyah	10-0	153-15.3	11-27	.407	0-0	.000	15-21	.714	5	10	15	1.5	12-0	10	26	1	9	37	3.7
Erwin, Crystal	10-8	164-16.4	12-45	.267	0-0	.000	10-14	.714	10	20	30	3.0	25-0	7	11	3	5	34	3.4
D'Amico, Melissa	10-0	77-7.7	10-17	.588	0-0	.000	5-10	.500	4	11	15	1.5	18-0	1	7	7	1	25	2.5
Powers, Susie	9-0	76-8.4	3-11	.273	0-3	.000	0-0	.000	4	7	11	1.2	1-0	5	3	3	3	6	0.7
Tsipis, Amanda	3-0	13-4.3	0-2	.000	0-0	.000	2-2	1.000	1	0	1	0.3	0-0	1	2	0	0	2	0.7
Team									25	27	52	5.2					4		
Notre Dame	10	2000	240-545	.440	22-58	.379	158-206	.767	122	255	377	37.7	170-1	141	152	45	94	660	66.0
Opponents	10	2000	185-557	.332	42-181	.232	121-177	.684	145	200	345	34.5	168-6	108	179	41	71	533	53.3

Current Notre Dame Players — Career Statistics vs. Boston College

Player	GP-GS	Min.-Avg.	FG-A	Pct.	3FG-A	Pct.	FT-A	Pct.	OR	DR	Tot.	Avg.	PF-DQ	A	T	B	S	Pts.	Avg.
Batteast, Jacqueline	4-4	121-30.3	21-58	.362	2-7	.286	11-15	.733	11	20	31	7.8	7-0	10	9	9	7	55	13.8
Duffy, Megan	3-3	115-38.3	9-22	.409	4-9	.444	6-10	.600	0	10	10	3.3	5-0	7	7	0	7	28	9.3
Allen, Charel	1-0	28-28.0	3-5	.600	1-1	1.000	2-3	.667	1	4	5	5.0	2-0	1	2	0	2	9	9.0
LaVere, Courtney	3-0	71-23.7	7-25	.280	0-0	.000	11-14	.786	3	5	8	2.7	10-1	4	9	3	2	25	8.3
Borton, Teresa	4-3	89-22.3	10-23	.435	0-0	.000	0-4	.000	8	6	14	3.5	15-1	7	5	1	2	20	5.0
Gaines, Tulyah	1-0	13-13.0	2-2	1.000	0-0	.000	0-1	.000	1	2	3	3.0	1-0	1	2	0	3	4	4.0
D'Amico, Melissa	1-0	4-4.0	2-3	.667	0-0	.000	0-0	.000	1	0	1	1.0	1-0	0	0	0	0	4	4.0
Erwin, Crystal	2-1	19-9.5	1-7	.143	0-0	.000	1-2	.500	1	3	4	2.0	2-0	3	6	0	0	3	1.5
Gray, Breona	2-1	33-16.5	0-3	.000	0-0	.000	1-2	.500	1	2	3	1.5	1-0	0	3	0	4	1	0.5
Powers, Susie	1-0	8-8.0	0-0	.000	0-0	.000	0-0	.000	0	1	1	1.0	0-0	0	1	0	0	0	0.0

2004-05 Single Game Highs & Lows

Team Superlatives

Notre Dame High	Notre Dame Low	Category	Opponent High	Opponent Low
92 vs. Illinois State (11/12/04)	50, twice (MR: vs. Connecticut, 1/12/05)	Points/Game	82 by Michigan State (12/2/04)	33 by Seton Hall (1/2/05)
54 (1st) vs. Purdue (1/16/05)	20 (1st) vs. Rutgers (1/23/05)	Points/Half	41, twice (MR: 1st by Michigan State, 12/2/04)	14, twice (MR: 1st by SHU, 1/2/05)
37 vs. Illinois State (11/12/04)	16 at Marquette (12/19/04)	Field Goals Made	26 by Purdue (1/16/05)	12 by Seton Hall (1/2/05)
72 vs. Michigan State (12/2/04)	43 at Villanova (1/9/05)	Field Goal Attempts	72 by St. John's (1/26/05)	49, twice (MR: by Syracuse, 1/19/05)
.604 vs. Washington (12/11/04)	.347 vs. Michigan State (12/2/04)	FG Percentage	.448 by Purdue (1/16/05)	.222 by Seton Hall (1/2/05)
6 vs. Purdue (1/16/05)	0, three times (MR: vs. Connecticut, 1/12/05)	3-Point FG Made	9, twice (MR: by Connecticut, 1/30/05)	1 by Dayton (12/9/04)
10, three times (MR: vs. Georgetown, 2/12/05)	2 at Villanova (1/9/05)	3-Point FG Attempts	29 by Syracuse (1/5/05)	12 by Ohio State (11/20/04)
1.000, twice (MR: at Villanova, 1/9/05)	.000, three times (MR: vs. Connecticut, 1/12/05)	3-Point FG Percentage	.450 by Connecticut (1/30/05)	.071 by Dayton (12/9/04)
20, four times (MR: vs. Georgetown, 2/12/05)	10, twice (MR: vs. Connecticut, 1/12/05)	Free Throws Made	29 by Michigan State (12/2/04)	4 by Rutgers (1/23/05)
27 vs. Michigan State (12/2/04)	15, twice (MR: vs. Connecticut, 1/12/05)	Free Throw Attempts	33 by Michigan State (12/2/04)	5 by Rutgers (1/23/05)
1.000* at Valparaiso (11/30/04)	.542 vs. Seton Hall (1/2/05)	FT Percentage	.879 by Michigan State (12/2/04)	.412 by USC (11/26/04)
50 at Pittsburgh (2/5/05)	31 at Marquette (12/19/04)	Rebounds	54*** by Michigan State (12/2/04)	21 by Georgetown (2/12/05)
29** vs. Illinois State (11/12/04)	11, three times (MR: at Villanova, 1/9/05)	Assists	19 by Purdue (1/16/05)	6 by USC (11/26/04)
20 vs. Colorado State (11/22/04)	4 vs. Connecticut (1/12/05)	Steals	14, twice (MR: by St. John's, 1/26/05)	3 by Nebraska (11/14/04)
12 vs. Michigan State (12/2/04)	1 vs. Washington (12/11/04)	Blocked Shots	11*** by Duke (11/17/04)	0, twice (MR: by USC, 11/26/04)
23 at USC (11/26/04)	8 vs. Seton Hall (1/2/05)	Turnovers	29 by Colorado State (11/22/04)	7 by Valparaiso (11/30/04)
23 vs. Illinois State (11/12/04)	8 vs. Rutgers (1/23/05)	Fouls	21, three times (MR: by Michigan State, 12/2/04)	12 by Dayton (12/9/04)

* - school record // ** - Preseason WNIT record // *** - Joyce Center opponent record

Individual Superlatives

	Notre Dame	Opponent
Points Scored	32 by Jacqueline Batteast vs. Ohio State (11/20/04)	25, three times (MR: by Ann Strother of Connecticut, 1/30/05)
Field Goals Made	11 by Jacqueline Batteast vs. Ohio State (11/20/04)	11 by Jackie Adamshick of Villanova (1/9/05)
Field Goal Attempts	25 by Jacqueline Batteast vs. Michigan State (12/2/04)	23 by Jackie Adamshick of Villanova (1/9/05)
Highest FG Percentage (min. 5 made)	1.000 (9-9*) by Crystal Erwin vs. Washington (12/11/04)	.833 (5-6) by Vaida Sipaviciute of Syracuse (1/19/05)
3-Point Field Goals Made	3, five times (MR: by Megan Duffy vs. Purdue, 1/16/05)	7** by Ann Strother of Connecticut (1/30/05)
3-Point Field Goal Attempts	7 by Megan Duffy vs. Georgetown (2/12/05)	12, twice (MR: by Ann Strother of Connecticut, 1/12/05)
3-Point FG Percentage (min. 2 made)	1.000 (2-2), five times (MR: by J. Batteast at Pittsburgh, 2/5/05)	1.000 (3-3) by Erin Lawless of Purdue (1/16/05)
Free Throws Made	10 by Jacqueline Batteast vs. Ohio State (11/20/04)	10, three times (MR: by Stephanie Raymond of NIU, 12/30/04)
Free Throw Attempts	13 by Jacqueline Batteast at Providence (2/9/05)	15 by Katie Donovan of Illinois State (11/12/04)
Free Throw Percentage (min. 3 made)	1.000 (8-8), three times (MR: by Megan Duffy vs. Purdue, 1/16/05)	1.000 (9-9) by Jessica Davenport of Ohio State (11/20/04)
Rebounds	12 by Teresa Borton vs. Georgetown (2/12/05)	13, twice (MR: by Aja Parham of Boston College, 2/2/05)
Assists	11 by Megan Duffy vs. Rutgers (1/23/05)	7, four times (MR: by Brina Pollack of Purdue, 1/16/05)
Steals	7, three times (MR: by Megan Duffy at Connecticut, 1/30/05)	5 by Kia Wright of St. John's (1/26/05)
Blocked Shots	6 by Teresa Borton vs. Michigan State (12/2/04)	8** by Vaida Sipaviciute of Syracuse (1/19/05)
Turnovers	9 by Megan Duffy vs. Ohio State (11/20/04)	7, three times (MR: by Cappie Pondexter of Rutgers, 1/23/05)
Minutes Played	45 by Megan Duffy vs. Michigan State (12/2/04)	45 by Lindsay Bowen of Michigan State (12/2/04)

* - Joyce Center record // ** - opponent record

NOTRE DAME VS. BOSTON COLLEGE

2004-05 Notre Dame Game-by-Game Statistics

Opponent (Attendance)	Overall		3-Point		FT-A	Pct.	Rebs.		PF	A	TO	B	S	Pts
	FG-A	Pct.	FG-A	Pct.			Off-Def-Tot							
(1) NOTRE DAME (6,190) vs. Illinois State	37-70	.529	5-10	.500	13-21	.619	20-20-40	23	29	18	4	15	92	
(1) NOTRE DAME (5,370) vs. Nebraska	28-65	.431	1-7	.143	16-21	.762	16-33-49	14	19	11	5	5	73	
(1) NOTRE DAME (3,094) vs. Duke	21-65	.323	7-19	.368	8-15	.533	14-23-37	17	12	9	1	3	57	
(1) NOTRE DAME (3,925) vs. Ohio State	26-63	.413	5-5	1.000	19-22	.864	17-25-42	13	21	16	6	9	76	
NOTRE DAME (5,115) vs. Colorado State	25-68	.368	6-17	.353	9-12	.750	18-21-39	21	15	21	11	5	65	
NOTRE DAME at USC (3,085)	23-53	.434	3-6	.500	17-21	.810	14-22-36	16	12	18	8	8	66	
NOTRE DAME at Valparaiso (2,214)	23-52	.442	2-12	.167	14-17	.824	9-19-28	20	15	16	4	13	62	
Notre Dame (5,544) vs. MICHIGAN STATE	24-58	.414	2-8	.250	19-26	.731	14-22-36	13	18	16	8	20	69	
NOTRE DAME at Dayton (2,517)	18-49	.367	2-13	.154	9-12	.750	10-26-36	19	12	29	2	9	47	
NOTRE DAME at Marquette (2,573)	21-51	.412	0-3	.000	18-24	.750	7-29-36	20	12	23	5	10	60	
NOTRE DAME at Northern Illinois (2,149)	23-66	.348	3-19	.158	7-17	.412	18-24-42	21	6	25	0	10	56	
*NOTRE DAME (6,188) vs. Seton Hall	24-58	.414	3-8	.375	18-18	1.000	18-25-43	16	11	10	3	6	69	
*NOTRE DAME (5,173) vs. Syracuse	23-56	.411	2-16	.125	11-15	.733	11-16-27	15	12	7	2	7	59	
*Notre Dame at VILLANOVA (1,759)	25-72	.347	3-8	.375	20-27	.741	18-25-43	22	15	16	12	9	73	
*Notre Dame (6,744) vs. CONNECTICUT	24-67	.358	5-17	.294	29-33	.879	20-34-54	21	14	20	2	12	82	
(2) NOTRE DAME (7,282) vs. Purdue	27-58	.466	1-6	.167	10-15	.667	11-25-36	15	14	16	2	8	65	
*NOTRE DAME at Syracuse (679)	15-52	.288	1-14	.071	8-10	.800	13-22-35	12	12	26	5	5	39	
*NOTRE DAME (6,763) vs. Rutgers	29-48	.604	0-3	.000	14-20	.700	11-27-38	19	25	20	1	10	72	
*NOTRE DAME (5,186) vs. St. John's	21-62	.339	5-20	.250	11-14	.786	16-12-28	16	17	14	3	10	58	
*NOTRE DAME at Connecticut (10,167)	16-46	.348	1-6	.167	17-20	.850	6-25-31	20	11	13	6	11	50	
*NOTRE DAME (6,904) vs. Boston College	16-56	.286	4-15	.267	11-19	.579	20-27-47	17	13	19	3	5	47	
*NOTRE DAME at Pittsburgh (5,652)	25-49	.510	3-6	.500	20-25	.800	6-29-35	22	15	18	5	12	73	
*NOTRE DAME (6,461) vs. Georgetown	13-55	.236	4-22	.182	19-25	.760	16-20-36	20	10	18	4	12	49	
(1) Sportsview.tv Preseason WNIT (campus sites)	20-55	.364	1-8	.125	13-24	.542	12-23-35	10	15	8	2	14	54	
(2) BIG EAST/Big Ten Challenge (Notre Dame, Ind.)	12-54	.222	3-13	.231	6-8	.750	20-30-50	18	9	24	2	8	33	
(3) BIG EAST Conference Championship (Hartford, Conn.)	26-56	.464	4-10	.400	19-25	.760	15-30-45	10	22	17	3	8	75	
	22-70	.314	9-29	.310	5-8	.625	19-18-37	18	15	15	5	9	58	
	19-43	.442	2-2	1.000	14-19	.737	8-25-33	18	11	20	4	6	54	
	21-53	.396	4-16	.250	13-19	.684	10-17-27	14	11	10	5	9	59	
	20-52	.385	0-3	.000	10-15	.667	14-24-38	18	14	17	5	4	50	
	25-62	.403	5-20	.250	12-19	.632	17-20-37	13	17	9	6	9	67	
	30-62	.484	6-8	.750	20-24	.833	14-22-36	13	22	15	4	6	86	
	26-58	.448	6-17	.353	11-13	.846	11-20-31	19	19	21	4	8	69	
	29-63	.460	4-7	.571	12-17	.706	17-23-40	15	15	15	3	13	74	
	19-49	.388	4-17	.235	19-22	.864	8-19-27	16	14	19	8	5	61	
	21-45	.467	2-5	.400	19-22	.864	11-24-35	8	17	21	6	9	63	
	20-65	.308	3-17	.176	4-5	.800	22-15-37	18	9	21	1	14	47	
	28-63	.444	2-6	.333	14-23	.609	20-29-49	10	21	17	8	6	72	
	24-72	.333	7-19	.368	10-13	.769	21-21-42	19	12	14	3	14	65	
	23-57	.404	3-6	.500	16-21	.762	14-21-35	17	14	11	2	13	65	
	19-52	.365	9-20	.450	12-17	.706	14-22-36	19	12	20	7	5	59	
	25-56	.446	1-4	.250	13-22	.591	9-23-32	14	16	15	4	14	64	
	20-58	.345	4-17	.235	13-18	.722	17-28-45	20	11	22	3	6	57	
	27-62	.435	2-6	.333	19-24	.792	19-31-50	16	19	15	10	8	75	
	17-68	.250	5-26	.192	8-18	.444	26-18-44	18	7	20	6	7	47	
	29-58	.500	3-8	.375	14-23	.609	16-22-38	11	19	11	5	7	75	
	19-50	.380	6-16	.375	13-15	.867	9-15-24	16	11	15	1	6	57	
	25-53	.472	2-10	.200	20-25	.800	19-23-42	12	19	21	4	8	72	
	21-51	.412	6-16	.375	10-17	.588	10-11-21	14	14	19	1	10	58	

Winners listed in ALL CAPS // Attendance listed in parentheses next to home team (where applicable)

* - BIG EAST Conference game

(1) Sportsview.tv Preseason WNIT (campus sites)

(2) BIG EAST/Big Ten Challenge (Notre Dame, Ind.)

(3) BIG EAST Conference Championship (Hartford, Conn.)

2004-05 Notre Dame Points-Rebounds-Assists

Opponent	Gaines	Allen	Powers	Tsipis	Borton	Duffy	Batteast	Gray	D'Amico	Erwin	LaVere
(1) ILLINOIS STATE	0-0-0	14-6-3	3-2-4	2-0-0	11-5-2	15-1-8	13-5-3	4-6-2	2-5-0	10-6-2	18-2-5
(1) NEBRASKA	DNP	2-8-3	0-2-0	0-0-0	13-11-1	7-5-3	24-6-7	12-7-2	3-5-0	1-2-1	11-2-2
(1) DUKE	DNP	16-3-3	DNP	DNP	7-6-1	15-3-7	17-5-7	6-2-2	DNP	2-4-1	13-11-0
(1) OHIO STATE	DNP	6-5-1	DNP	DNP	4-4-1	15-3-6	32-4-0	4-6-3	2-2-0	0-1-0	3-5-1
COLORADO STATE	DNP	6-4-1	0-2-2	0-0-0	9-5-0	15-1-5	14-9-7	3-2-0	3-0-1	12-2-1	7-6-1
at USC	2-1-2	6-4-1	0-0-0	DNP	2-5-1	12-4-2	18-5-4	4-2-2	5-3-0	9-3-0	2-5-0
at Valparaiso	0-2-0	6-9-2	0-1-0	DNP	6-9-1	20-5-4	25-10-1	6-3-3	2-0-0	4-2-0	DNP
MICHIGAN STATE	0-0-2	7-5-3	0-0-0	DNP	9-9-2	19-5-0	16-9-4	2-4-4	0-2-0	20-5-0	DNP
at Dayton	5-1-0	14-2-2	2-6-3	0-0-1	8-4-0	5-2-5	7-7-0	12-1-2	12-4-0	0-6-1	DNP
WASHINGTON	2-0-4	2-3-1	0-0-0	DNP	10-3-2	6-4-10	17-10-4	11-5-2	0-1-0	24-7-2	DNP
at Marquette	2-2-0	4-2-0	2-2-1	DNP	3-2-1	5-2-3	27-10-3	5-3-2	0-0-0	2-3-1	DNP
at Northern Illinois	12-7-2	5-5-2	2-1-1	2-0-0	6-4-4	9-2-1	21-3-2	6-5-0	2-3-1	6-3-2	2-1-0
*SETON HALL	0-1-2	8-3-2	0-1-0	0-0-0	4-1-1	10-4-3	18-7-2	0-4-2	2-1-0	6-8-1	6-3-2
*SYRACUSE	0-3-2	0-3-1	0-1-0	0-0-0	17-6-3	17-3-6	15-7-4	17-7-4	4-2-1	5-7-0	0-2-1
*at Villanova	0-0-0	2-4-1	0-0-0	DNP	17-5-0	2-3-7	22-6-2	6-4-0	0-1-0	3-1-1	2-2-0
*CONNECTICUT	0-1-2	8-6-1	DNP	DNP	7-9-0	6-2-9	8-5-0	2-2-1	DNP	11-4-1	8-4-0
(2) PURDUE	7-2-2	8-2-2	0-0-0	0-0-0	18-9-1	19-2-6	21-11-5	5-3-5	0-1-0	4-2-1	4-1-0
*at Syracuse	0-0-1	17-5-0	0-0-0	DNP	8-6-0	17-5-6	19-2-3	0-4-2	0-0-0	0-2-0	13-10-3
*RUTGERS	0-1-1	8-6-0	DNP	DNP	4-4-0	7-1-11	27-6-1	4-1-0	0-0-0	4-9-2	9-5-2
*ST. JOHN'S	0-2-0	8-6-2	DNP	DNP	12-7-3	14-3-10	10-10-0	8-2-3	0-1-0	14-10-2	6-2-1
*at Connecticut	4-0-0	11-0-1	DNP	DNP	5-11-1	12-4-5	9-3-4	8-5-2	0-0-0	2-1-0	14-2-1
*BOSTON COLLEGE	4-3-1	9-5-1	DNP	DNP	12-6-1	9-6-3	15-3-3	1-3-0	4-1-0	3-2-3	7-1-4
*at Pittsburgh	3-2-3	16-3-3	0-1-0	0-1-0	10-7-1	6-2-9	12-3-1	0-4-2	3-2-0	8-6-0	17-8-0
*at Providence	9-0-2	6-7-2	0-0-0	DNP	10-4-1	8-3-5	23-10-4	8-1-0	1-2-0	0-3-2	10-4-3
*GEORGETOWN	0-3-1	14-6-4	DNP	DNP	14-12-0	17-3-7	20-8-5	5-2-1	DNP	2-5-0	0-1-1

Home games in ALL CAPS

* - BIG EAST Conference game

(1) Sportsview.tv Preseason WNIT (campus sites)

(2) BIG EAST/Big Ten Challenge (Notre Dame, Ind.)

(3) BIG EAST Conference Championship (Hartford, Conn.)

NOTRE DAME VS. BOSTON COLLEGE

2004-05 Miscellaneous Statistics

	<u>All Games</u>	<u>BIG EAST Games</u>
Most First Half Points Scored	54 vs. Purdue (1/16)	43 at Syracuse (1/19)
Most First Half Points Allowed	41 by Michigan State (12/2)	36 by Providence (2/9)
Most Second Half Points Scored	50 vs. Duke (11/17)	45 at Providence (2/9)
Most Second Half Points Allowed	41 by Illinois State (11/12)	36 by Connecticut (1/12)
Fewest First Half Points Scored	20 vs. Rutgers (1/23)	20 vs. Rutgers (1/23)
Fewest First Half Points Allowed	14, twice (MR: by Seton Hall, 1/2)	14 by Seton Hall (1/2)
Fewest Second Half Points Scored	24, twice (MR: vs. Connecticut, 1/12)	24, twice (MR: vs. Connecticut, 1/12)
Fewest Second Half Points Allowed	16 by Rutgers (1/23)	16 by Rutgers (1/23)

Largest Leads

ND: 34 — 75-41 (2:35, 2nd) at Pittsburgh (ND 75-47), 2/5
 Opponent: 17, twice — 65-48 (1:27, 2nd) and 67-50 (0:00, 2nd) by Connecticut (UC 67-50), 1/12

Biggest Deficit Overcome in a Win: 13 — 31-18 (1:06, 1st) vs. Rutgers (ND 63-47), 1/23

Biggest Halftime Deficit Overcome in a Win: 11 — 31-20 vs. Rutgers (ND 63-47), 1/23

Biggest Lead Surrendered in a Loss: 9 — 13-4 (13:35, 1st) at Villanova (VU 59-54), 1/9

Biggest Halftime Lead Surrendered in a Loss: None

Halftime Leads: ND: 17 (ND Record — 17-0; 7-0 vs. BIG EAST) // Opponents: 8 (ND Record — 5-3; 3-2 vs. BIG EAST) // Ties: 0 (ND Record — 0-0; 0-0 vs. BIG EAST)

Rebound Advantage: ND: 16 (ND Record — 14-2; 6-2 vs. BIG EAST) // Opponents: 8 (ND Record — 7-1; 4-0 vs. BIG EAST) // Ties: 1 (ND Record — 1-0; 0-0 vs. BIG EAST)

Bench Scoring Advantage: ND: 15 (ND Record — 15-0; 6-0 vs. BIG EAST) // Opponents: 10 (ND Record — 7-3; 4-2 vs. BIG EAST) // Ties: 0 (ND Record — 0-0; 0-0 vs. BIG EAST)

ND Margin: +78 points, +3.1 ppg. (ND — 435 pts., 17.4 ppg.; Opponents — 357 pts., 14.3 ppg.)

<u>Point Differential</u>	<u>3</u>	<u>4</u>	<u>5</u>	<u>6</u>	<u>7</u>	<u>9</u>	<u>10</u>	<u>11</u>	<u>13</u>	<u>14</u>	<u>16</u>	<u>17</u>	<u>18</u>	<u>19</u>	<u>21</u>	<u>22</u>	<u>24</u>	<u>26</u>	<u>28</u>
ND Wins	1	2	0	1	2	0	1	1	1	2	2	2	1	1	1	1	1	1	1
ND Losses	0	0	1	0	0	1	0	0	0	0	0	1	0	0	0	0	0	0	0

Starting Lineups (F-F-C-G-G) & W-L Marks

	<u>All Games</u>	<u>BIG EAST Games</u>
Batteast, Erwin, Borton, Duffy, Gray	14-3	8-2
Batteast, LaVere, Borton, Duffy, Gray	8-0	2-0

Complete Games Played: 8 // Opponents: 9

Most Minutes (overtime): 45 (Megan Duffy vs. Michigan State, 12/2)

Most Minutes (regulation): 40, seven times (Megan Duffy vs. Duke, 11/17; Duffy vs. Ohio State, 11/20; Jacqueline Batteast at Marquette, 12/19; Duffy at Villanova, 1/9; Duffy vs. Connecticut, 1/12; Duffy vs. Rutgers, 1/23; Duffy at Connecticut, 1/30)

Scoring

Double-Figure Games: 73 (Batteast 21, Duffy 14, Borton 11, Allen 7, LaVere 7, Erwin 6, Gray 4, D'Amico 1, Gaines 1) // Opponents: 60

20-29-Point Games: 12 (Batteast 9, Erwin 2, Duffy 1) // Opponents: 8

30-39-Point Games: 1 (Batteast 1) // Opponents: 0

Game-High Honors*: 20 (Batteast 14, Duffy 2, Borton 1, Erwin 1, Gray 1, LaVere 1)

Team-High Honors*: 28 (Batteast 15, Erwin 4, Duffy 3, LaVere 3, Allen 1, Borton 1, Gray 1)

Rebounding

Double-Figure Games: 12 (Batteast 6, Borton 3, LaVere 2, Erwin 1) // Opponents: 9

Game-High Honors*: 19 (Batteast 9, Borton 3, Erwin 3, LaVere 3, Gray 1)

Team-High Honors*: 34 (Batteast 12, Borton 7, Erwin 5, LaVere 4, Gray 3, Allen 1, Duffy 1, Gaines 1)

Assists

Double-Figure Games: 3 (Duffy 3) // Opponents: 0

Game-High Honors*: 19 (Duffy 14, Batteast 4, Borton 1)

Team-High Honors*: 28 (Duffy 19, Batteast 6, Borton 1, Gray 1, LaVere 1)

Double-Doubles

Points/Rebounds: 11 (Batteast 6 - VALPO, UW, MARQ, PUR, SJU, PC; Borton 2 - NEB, GU; LaVere 2 - DUKE, SYR**; Erwin 1 - SJU) // Opponents: 8

Points/Assists: 1 (Duffy 1 - SJU) // Opponents: 0

* - totals may not add up to games played due to ties // ** - second meeting with opponent

The Last Time It Happened ...

Notre Dame recorded a

30-point win was on 2/25/04 — ND 93, Miami 58 (35 points)*
 40-point win was on 11/26/02 — ND 107, Cleveland State 65 (42 points)*
 50-point win was on 3/4/01 — ND 89, Georgetown 33 (56 points) (*BIG EAST Championship Quarterfinal at Storrs, Conn.*)
 30-point loss was on 3/17/02 — Tennessee 89, ND 50 (39 points) (*NCAA Mideast Region Second Round at Knoxville, Tenn.*)

Notre Dame shot

60% on FGs was on 12/11/04 — 60.4% (29-48) vs. Washington (ND 72-58)*
 65% on FGs was on 2/12/97 — 68.0% (34-50) vs. Boston College (ND 91-64)*
 90% on FTs was on 11/30/04 — 100.0% (18-18) at Valparaiso (ND 69-59) (**school record**)

Notre Dame

won 10 games in a row was from 11/17/00 thru 2/14/01 — 23 straight
 won 15 games in a row was from 11/17/00 thru 2/14/01 — 23 straight
 won 20 games in a row was from 11/17/00 thru 2/14/01 — 23 straight
 lost 5 games in a row was from 3/21/91 thru 11/24/91 — 5 straight (*across two seasons*)
 • lost 5 games in a row (*one season*) was from 2/16/82 thru 3/6/82 — 5 straight
 scored 100 points was on 11/26/02 (ND 107, Cleveland State 65)*
 • scored 100 points on the road never
 • scored 100 points at a neutral site was on 11/24/89 vs. Liberty (ND 113-35) (*Rotary Classic at Orlando, Fla.*)
 • scored 100 points & lost never

allowed 100 points was on 12/8/98 (Connecticut 106, ND 81)*
 scored less than 50 points was on 3/27/04 (Penn State 55, ND 49) (*NCAA East Regional Semifinal at Hartford, Conn.*)
 allowed less than 50 points was on 2/5/05 (ND 75, Rutgers 47)
 played an overtime game was on 12/2/04 (Michigan State 82, ND 73 - ot)*
 • played a multiple-overtime game was on 11/30/97 (ND 93, UCLA 91 - 2ot)
 rallied from a double-digit deficit to win was on 2/9/05 — 11 points (25-36, 1:45, 1st) at Providence (ND 75-57)
 won on a "last second" shot was on 12/19/04 (ND 50, Marquette 47 — Jacqueline Batteast three-pointer at 0:00)
 lost on a "last second" shot was on 1/12/02 (Villanova 60, ND 59 — Mimi Riley jumper at 0:00.4)
 had five double-figure scorers was on 11/12/04 (ND 92, Illinois State 73) — Courtney LaVere 18, Megan Duffy 15, Charel Allen 14, Jacqueline Batteast 13, Teresa Borton 11, Crystal Erwin 10*
 had six double-figure scorers was on 11/12/04 (ND 92, Illinois State 73) — Courtney LaVere 18, Megan Duffy 15, Charel Allen 14, Jacqueline Batteast 13, Teresa Borton 11, Crystal Erwin 10*
 had seven double-figure scorers was on 2/6/97 (ND 90, Syracuse 73) — Rosanne Bohman 16, Mollie Peirick 15, Katryna Gaither 14, Kari Hutchinson 11, Sheila McMillen 11, Beth Morgan 11, Jeannine Augustin 10

had no double-figure scorers was on 2/8/04 (Seton Hall 51, ND 45)
 had two double-figure rebounders was on 1/26/05 (ND 72, St. John's 65) — Jacqueline Batteast 10, Crystal Erwin 10*
 had two players with "double-doubles" was on 1/26/05 (ND 72, St. John's 65) — Crystal Erwin (14 pts., 10 reb.), Megan Duffy (14 pts., 10 asst.) & Jacqueline Batteast (10 pts., 10 reb.)*
 had three players with "double-doubles" was on 1/26/05 (ND 72, St. John's 65) — Crystal Erwin (14 pts., 10 reb.), Megan Duffy (14 pts., 10 asst.) & Jacqueline Batteast (10 pts., 10 reb.)*
 had two 20-point scorers was on 11/30/04 (ND 69, Valparaiso 59) — Jacqueline Batteast 25, Megan Duffy 20
 had three 20-point scorers was on 1/7/99 (ND 111, West Virginia 90) — Danielle Green 28, Sheila McMillen 26, Ruth Riley 23*
 made 10 three-point field goals was on 3/3/02 (Syracuse 84, ND 79) — 10-26 (38.5%) on threes (*BIG EAST Championship Quarterfinal at Piscataway, N.J.*)
 committed 10 turnovers or less was on 1/2/05 (ND 54, Seton Hall 33) — 8 turnovers*
 committed 25 turnovers or more was on 1/28/04 (ND 59, Miami 50) — 26 turnovers
 forced 25 turnovers or more was on 12/9/04 (ND 65, Dayton 39) — 26 turnovers

An Irish player had

25 points was on 1/23/05 — Jacqueline Batteast (27) vs. Rutgers (ND 63-47)*
 30 points was on 11/20/04 — Jacqueline Batteast (32) vs. Ohio State (ND 66-62)*
 35 points was on 2/22/00 — Ruth Riley (36) vs. Miami (ND 83-68)*
 40 points was on 1/30/99 — Ruth Riley (41) at Providence (ND 97-59) (**school record**)
 15 rebounds was on 2/23/03 — Jacqueline Batteast (18) at Connecticut (UC 77-59)
 20 rebounds was on 1/20/88 — Heidi Bunek (20) at DePaul (DPU 80-77)
 10 assists was on 1/26/05 — Megan Duffy (10) vs. St. John's (ND 72-65)*
 5 blocks was on 12/2/04 — Teresa Borton (6) vs. Michigan State (MSU 82-73 - ot)*
 5 steals was on 1/30/05 — Megan Duffy (7) at Connecticut (ND 65-59)
 a "double-double" was on 2/12/05 — Teresa Borton (14 pts., 12 reb.) vs. Georgetown (ND 72-58)*
 a "triple-double" was on 2/15/90 — Sara Liebscher (17 pts., 12 reb., 10 asst.) vs. Detroit (ND 99-58)*
 20 pts & 10 rebs was on 2/9/05 — Jacqueline Batteast (23 pts., 10 reb.) at Providence (ND 75-57)
 20 pts & 20 rebs was on 1/20/88 — Heidi Bunek (25 pts., 20 reb.) at DePaul (DPU 80-77)

An opposing player had

25 points was on 1/30/05 — Ann Strother (25), Connecticut (ND 65-59)
 30 points was on 1/28/98 — Jen Beisel (30), Villanova (VU 70-54)*
 35 points was on 1/16/95 — Angela Simpson (37), Northwestern State (La.) (NSU 103-93) (*NWIT Semifinal at Amarillo, Texas*)
 10 rebounds was on 2/5/05 — Mercedes Walker (11), Pittsburgh (ND 75-47)
 15 rebounds was on 12/22/03 — Ebony Hoffman (16), USC (ND 73-62)*
 20 rebounds was on 1/8/89 — Wendy Scholtens (20), Vanderbilt (VU 86-64)
 10 assists was on 12/4/03 — Stephanie Rich (12), Wisconsin (ND 82-64)*
 5 blocks was on 1/19/05 — Vaida Sipaviciute (8), Syracuse (ND 74-61)
 5 steals was on 1/26/05 — Kia Wright (5), St. John's (ND 72-65)*
 a "double-double" was on 2/5/05 — Mercedes Walker (13 pts., 11 reb.), Pittsburgh (ND 75-47)
 a "triple-double" was on 1/24/89 — Diana Vines (23 pts., 11 reb., 12 stl.), DePaul (DPU 83-62)

* - Notre Dame home game

2004-05 Notre Dame Women's Basketball Box Scores

GAME 25

#6/7 Notre Dame 72, Georgetown 58
February 12, 2005
Joyce Center (Notre Dame, Ind.)

Georgetown (58)

Player	min	fg-a	3fg-a	ft-a	reb	ast	pf	tp
Tamoulianis	31	3-11	0-0	0-2	1	1	2	6
Marlow	32	3-7	0-0	0-0	5	2	1	6
Heidloff	35	2-8	2-6	1-2	2	2	2	7
Carlin	29	3-7	2-5	3-3	3	0	0	11
LeSueur	30	3-6	0-0	4-8	2	4	5	10
Lisicky	34	6-11	2-5	2-2	2	5	3	16
Whitt	9	1-1	0-0	0-0	2	0	1	2
Team					4			
Totals	200	21-51	6-16	10-17	21	14	14	58

Notre Dame (72)

Player	min	fg-a	3fg-a	ft-a	reb	ast	pf	tp
Batteast	38	8-18	0-3	4-4	8	5	1	20
LaVere	11	0-1	0-0	0-0	1	1	2	0
Borton	33	7-10	0-0	0-1	12	0	2	14
Duffy	38	3-8	2-7	9-10	3	7	2	17
Gray	21	2-2	0-0	1-2	2	1	0	5
Gaines	12	0-2	0-0	0-0	3	1	0	0
Allen	26	5-9	0-0	4-4	6	4	4	14
Erwin	21	0-3	0-0	2-4	5	0	1	2
Team					2			
Totals	200	25-53	2-10	20-25	42	19	12	72

Georgetown	26	32	--	58
Notre Dame	35	37	--	72

FG Pct: Georgetown 41.2, Notre Dame 47.2. **3-PT FG Pct:** Georgetown 37.5, Notre Dame 20.0. **FT Pct:** Georgetown 58.8, Notre Dame 80.0. **Turnovers:** Georgetown 19, Notre Dame 21. **Blocked Shots:** Georgetown 1, Notre Dame 4. **Steals:** Georgetown 10 (Heidloff 3), Notre Dame 8. **Attendance:** 6,461.

NOTES: Notre Dame's nine-game winning streak is its longest since another nine-game run from Jan. 26-Feb. 23, 2002 ... The 22 wins this season are the most for the Irish since they won 34 times in 2000-01 ... the Georgetown victory also was Notre Dame's 10th in BIG EAST play, marking the 13th consecutive season that the Irish have posted double-digit conference wins (10 in the BIG EAST, three in the Midwestern Collegiate Conference) ... Notre Dame is 19-2 all-time against Georgetown, including a 10-0 record at home ... the Irish have scored at least 70 points in 16 of 21 career games vs. the Hoyas ... Notre Dame improves to 17-0 this season when leading at halftime, 10-0 when it shoots 45 percent or better from the field, 12-1 when scoring at least 70 points and 16-1 when limiting the opposition to less than 60 points ... the Irish had four double-digit scorers for the ninth time this year and are 12-1 when at least three players wind up in double figures ... for the second consecutive game, Notre Dame held its opponent to a season-low rebounding total (45 total rebounds allowed in past two games) ... during their current winning streak, the Irish have shot better than 40 percent in all nine games, while keeping the opposition under that figure seven times ... in addition to moving into fourth place on Notre Dame's career scoring list (1,765 points, passing former teammate Alicia Ratay), senior All-America forward Jacqueline Batteast collected her 10th 20-point game of the season (31st career), her 22nd double-figure scoring game of the year (94th career) and fifth five-assist game of the season (14th career) ... senior center Teresa Borton notched her second double-double of the year (fourth of her career) with 14 points and a career-high 12 rebounds, the latter mark breaking the old standard of 11 she had set on four occasions (most recently at Connecticut on Jan. 30) ... Borton has scored in double figures 11 times this season (35 career), including four consecutive games and five times in the past six outings ... junior guard Megan Duffy matched her season-high totals at the foul line, going 9-for-10 (also vs. Duke on Nov. 17) ... Duffy dished out at least five assists for the 11th time in the past 12 games, recording 7.0 apg. with a 2.40 assist/turnover ratio (84 assists, 35 turnovers) in that stretch; Duffy has 17 five-assist games this year (34 career) ... freshman guard Charel Allen delivered a career-high four assists, one more than her previous best which she had set on five occasions (most recently at Pittsburgh on Feb. 5) ... Allen posted her seventh double-digit scoring game of the season and third in the past five contests.

#1 Tulyah Gaines

Guard • 5-6 • Fr.-HS • North Las Vegas, Nev. (Cheyenne HS)

2004-05 Highlights

- Played five minutes in season opener vs. Illinois State before leaving with neck injury (missed four games).
- Returned after injury absence to log two points, two rebounds and two steals at USC.
- Grabbed two rebounds in victory at Valparaiso.
- Dished out two assists against Michigan State.
- Scored five points in 16 minutes at Dayton.
- Distributed a season-best four assists against Washington.
- Had two points and two rebounds at Marquette.
- Charted personal bests of 12 points (4-6 FG, 4-5 FT) and seven rebounds in 27 minutes at Northern Illinois.
- Came up with career-high three steals in win over Seton Hall.
- Picked up two assists and a steal against Connecticut.
- Tallied seven points (3-4 FG), two assists and two rebounds in 13 minutes against Purdue.
- Scored four points in nine minutes of victory at Connecticut.
- Added four points, three rebounds and tied career high with three steals against Boston College.
- Contributed three points (3-4 FT) and three assists at Pittsburgh.
- Offered up nine points (3-4 FG), two assists and two steals in win at Providence.
- Averaging 4.0 points in 15.0 minutes with a .583 field goal percentage (7-12) during past five games.

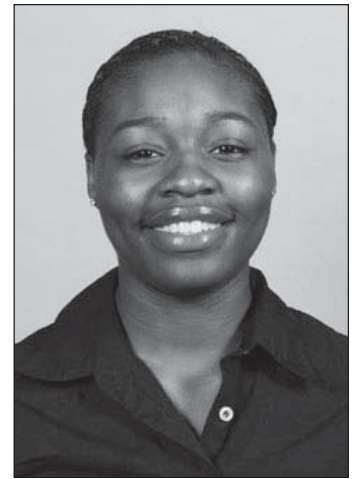
2004-05 Game-By-Game Statistics

Date	Opponent	Min	FG-FGA	3FG-FGA	FT-FTA	Off	Def	Tot	PF	A	TO	Blk	Stl	Pts
N12	Illinois State	5	0-0	0-0	0-0	0	0	0	1	0	0	0	0	0
N14	Nebraska	Did not play - INJ												
N17	#6/6 Duke	Did not play - INJ												
N20	#10/9 Ohio State	Did not play - INJ												
N22	Colorado State	Did not play - INJ												
N26	at USC	14	1-2	0-0	0-0	1	0	1	1	2	3	0	2	2
N30	at Valparaiso	12	0-2	0-0	0-0	2	0	2	0	0	3	0	1	0
D2	#15/15 Michigan St.	10	0-2	0-0	0-0	0	0	0	1	2	2	0	0	0
D9	at Dayton	16	1-3	0-0	3-4	1	0	1	2	0	5	0	0	5
D11	Washington	15	0-3	0-0	2-2	0	0	0	2	4	3	0	1	2
D19	at Marquette	12	0-2	0-0	2-2	1	1	2	1	0	2	0	1	2
D30	at Northern Illinois	27	4-6	0-0	4-5	0	7	7	2	2	4	0	2	12
J2	Seton Hall*	17	0-4	0-0	0-0	0	1	1	3	2	0	0	3	0
J5	Syracuse*	15	0-0	0-0	0-0	0	3	3	0	2	1	0	0	0
J9	at Villanova*	7	0-0	0-0	0-0	0	0	0	0	0	4	0	0	0
J12	#16/16 Connecticut*	11	0-2	0-0	0-2	0	1	1	1	2	2	0	1	0
J16	#20/20 Purdue	13	3-4	0-0	1-2	0	2	2	0	2	2	0	1	7
J19	at Syracuse*	15	0-2	0-0	0-2	0	0	0	0	1	1	0	1	0
J23	#6/7 Rutgers*	8	0-0	0-0	0-0	0	1	1	2	1	3	0	1	0
J26	St. John's*	5	0-1	0-0	0-0	2	0	2	2	0	3	0	0	0
J30	at #9/10 Connecticut*	9	2-3	0-0	0-0	0	0	0	1	0	1	0	0	4
F2	#16/13 BC*	13	2-2	0-0	0-1	1	2	3	1	1	2	0	3	4
F5	at Pittsburgh*	23	0-3	0-0	3-4	0	2	2	3	3	1	1	0	3
F9	at Providence*	18	3-4	0-0	3-4	0	0	0	2	2	2	0	2	9
F12	Georgetown*	12	0-2	0-0	0-0	2	1	3	0	1	2	0	1	0
F15	at Boston College*													
F19	at Rutgers*													
F26	West Virginia*													
M2	at Seton Hall*													

* - indicates BIG EAST Conference game // ^ - indicates game started

Gaines' Career Statistics

Season	GP-GS	Min.-Avg.	FG-FGA	Pct.	3FG-3FGA	Pct.	FT-FTA	Pct.	OR	DR	Tot	Avg	PF-DQ	A	T	B	S	Pts	Avg
2004-05	21-0	277-13.2	16-47	.340	0-0	.000	18-28	.643	10	21	31	1.5	25-0	27	46	1	20	50	2.4
TOTALS	21-0	277-13.2	16-47	.340	0-0	.000	18-28	.643	10	21	31	1.5	25-0	27	46	1	20	50	2.4



Career Highs

Points

Career ... 12 at Northern Illinois (12/30/04)

Rebounds

Career 7 at Northern Illinois (12/30/04)

Assists

Career 4 vs. Washington (12/11/04)

Field Goals

Career 4 at Northern Illinois (12/30/04)

Field Goal Attempts

Career 6 at Northern Illinois (12/30/04)

Three-Point Field Goals

Career None

Three-Point Field Goal Attempts

Career None

Free Throws

Career 4 at Northern Illinois (12/30/04)

Free Throw Attempts

Career 5 at Northern Illinois (12/30/04)

Steals

Career 3, twice (MR: vs. BC, 2/2/05)

Blocked Shots

Career 1 at Pittsburgh (2/5/05)

Minutes Played

Career ... 27 at Northern Illinois (12/30/04)

Miscellaneous

Double-doubles 0/0

Double-figure scoring games 1/1

20-point games 0/0

Double-figure rebound games 0/0

5-assist games 0/0

Double-figure assist games 0/0

(noted in season/career format)

#2 Charel Allen

Guard • 5-11 • Fr.-HS • Monessen, Pa. (Monessen HS)

2004-05 Highlights

- Scored 14 points and grabbed team-high six rebounds in collegiate debut vs. Illinois State.
- Plucked eight rebounds (second on team) in victory over Nebraska.
- Came off bench to score 16 points (14 in the second half), including two critical three-pointers in win vs. Duke.
- Made all three of her shots, finishing with six points and five rebounds in Preseason WNIT title game vs. Ohio State.
- Pinched season-high five steals against Colorado State.
- Scored six points for fourth consecutive game and added season-high nine rebounds at Valparaiso.
- Tallied seven points, five rebounds and three assists before fouling out against Michigan State.
- Rang up team-high 14 points (7-12 FG) in only 16 minutes at Dayton.
- Logged eight points and three rebounds in conference debut vs. Seton Hall.
- Knocked down first four shots vs. Connecticut, finishing with eight points and six rebounds in 28 minutes.
- Piled up eight points and matched season high with 32 minutes played against Purdue.
- Poured in season-high 17 points (6-9 FG, 2-2 3FG) and added five rebounds at Syracuse.
- Repeated Rutgers performance vs. St. John's with eight points and six rebounds.
- Scored 11 points (5-6 FG) at Connecticut, including five in a row during final four minutes to help seal victory.
- Added nine points and five rebounds in win over Boston College.
- Chalked up 16 points (7-11 FG) in homecoming game at Pittsburgh ... was named **BIG EAST Freshman of the Week** for her efforts vs. BC and Pittsburgh.
- Carded 14 points, six rebounds and career-high four assists vs. Georgetown.
- Coming off bench to average 11.7 points with .522 FG% (36-69) and 1.000 3FG% (5-5) in past nine games.

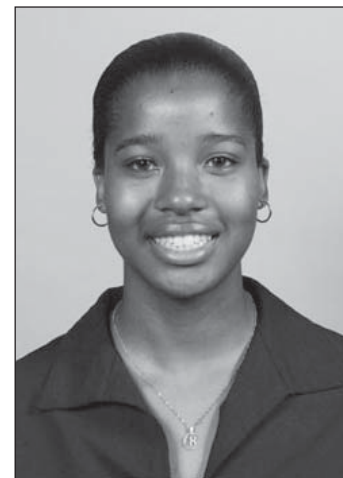
2004-05 Game-By-Game Statistics

Date	Opponent	Min	FG-FGA	3FG-FGA	FT-FTA	Off	Def	Tot	PF	A	TO	Blk	Stl	Pts
N12	Illinois State	27	4-9	0-1	6-7	4	2	6	3	3	2	1	2	14
N14	Nebraska	28	1-6	0-0	0-0	3	5	8	0	3	1	0	1	2
N17	#6/6 Duke	32	6-13	2-2	2-2	2	1	3	2	3	2	2	3	16
N20	#10/9 Ohio State	22	3-3	0-0	0-0	1	4	5	2	1	1	0	1	6
N22	Colorado State	31	2-7	0-1	2-2	2	2	4	0	1	2	2	5	6
N26	at USC	23	2-3	0-0	2-4	0	4	4	3	1	3	0	0	6
N30	at Valparaiso	31	1-4	0-0	4-4	4	5	9	3	2	3	0	0	6
D2	#15/15 Michigan St.	23	1-2	0-0	5-6	3	2	5	5	3	2	1	2	7
D9	at Dayton	16	7-12	0-1	0-0	1	1	2	2	2	2	0	1	14
D11	Washington	17	1-4	0-1	0-0	0	3	3	4	1	1	0	0	2
D19	at Marquette	15	1-5	0-0	2-2	0	2	2	3	0	5	0	0	4
D30	at Northern Illinois	19	2-4	0-0	1-1	0	5	5	3	2	0	1	0	5
J2	Seton Hall*	24	1-4	0-1	6-8	1	2	3	0	2	0	0	0	8
J5	Syracuse*	16	0-4	0-0	0-0	0	3	3	0	1	3	0	0	0
J9	at Villanova*	14	1-2	0-0	0-0	2	2	4	0	1	3	0	0	2
J12	#16/16 Connecticut*	28	4-6	0-0	0-0	2	4	6	4	1	0	0	0	8
J16	#20/20 Purdue	32	2-10	1-1	3-4	1	1	2	1	2	1	0	0	8
J19	at Syracuse*	30	6-9	2-2	3-4	2	3	5	2	0	3	0	2	17
J23	#6/7 Rutgers*	29	2-4	0-0	4-4	0	6	6	1	0	6	0	4	8
J26	St. John's*	27	3-8	0-0	2-3	2	4	6	0	2	2	0	0	8
J30	at #9/10 Connecticut*	21	5-6	1-1	0-0	0	0	0	4	1	0	0	2	11
F2	#16/13 BC*	28	3-5	1-1	2-3	1	4	5	2	1	2	0	2	9
F5	at Pittsburgh*	32	7-11	0-0	2-2	0	3	3	2	3	0	0	1	16
F9	at Providence*	26	3-7	0-0	0-0	3	4	7	1	2	3	0	1	6
F12	Georgetown*	26	5-9	0-0	4-4	5	1	6	4	4	3	0	2	14
F15	at Boston College*													
F19	at Rutgers*													
F26	West Virginia*													
M2	at Seton Hall*													

* - indicates BIG EAST Conference game // ^ - indicates game started

Allen's Career Statistics

Season	GP-GS	Min.-Avg.	FG-FGA	Pct.	3FG-3FGA	Pct.	FT-FTA	Pct.	Off	Def	Tot	Avg	PF-DQ	A	T	B	S	Pts	Avg
2004-05	25-0	617-24.7	73-157	.465	7-12	.583	50-60	.833	39	73	112	4.5	51-1	42	50	7	29	203	8.1
TOTALS	25-0	617-24.7	73-157	.465	7-12	.583	50-60	.833	39	73	112	4.5	51-1	42	50	7	29	203	8.1



Career Highs

Points

Career 17 at Syracuse (1/19/05)

Rebounds

Career 9 at Valparaiso (11/30/04)

Assists

Career 4 vs. Georgetown (2/12/05)

Field Goals

Career 7, twice (MR: at Pittsburgh, 2/5/05)

Field Goal Attempts

Career 13 vs. Duke (11/17/04)

Three-Point Field Goals

Career 2, twice (MR: at Syracuse, 1/19/05)

Three-Point Field Goal Attempts

Career 2, twice (MR: at Syracuse, 1/19/05)

Free Throws

Career ... 6, twice (MR: vs. Seton Hall, 1/2/05)

Free Throw Attempts

Career 8 vs. Seton Hall (1/2/05)

Steals

Career 5 vs. Colorado State (11/22/04)

Blocked Shots

Career ... 2, twice (MR: vs. CSU, 11/22/04)

Minutes Played

Career . 32, three times (MR: at Pittsburgh, 2/5/05)

Miscellaneous

Double-doubles 0/0

Double-figure scoring games 7/7

20-point games 0/0

Double-figure rebound games 0/0

5-assist games 0/0

5-steal games 1/1

(noted in season/career format)

#3 Susie Powers

Guard • 5-10 • So.-1V • Centennial, Colo. (Highlands Ranch HS)

2004-05 Highlights

- Set new career highs with six points, four assists and two three-pointers in season-opening victory over Illinois State.
- Had two rebounds against Nebraska.
- Collected two rebounds and two assists in win over Colorado State.
- Picked up a steal in four minutes at USC.
- Had one rebound in seven minutes at Valparaiso.
- Played four minutes against Michigan State.
- Snared career-high six rebounds and dished out three assists in season-best 20 minutes at Dayton.
- Logged two points and two rebounds at Marquette.
- Carded two points and a rebound at Northern Illinois.
- Registered career-high two blocked shots in eight minutes at Pittsburgh.

2004-05 Game-By-Game Statistics

Date	Opponent	Min	FG-FGA	3FG-FGA	FT-FTA	Off	Def	Tot	PF	A	TO	Blk	Stl	Pts
N12	Illinois State	19	2-6	2-4	0-0	0	2	2	1	4	0	0	1	6
N14	Nebraska	10	0-2	0-1	0-0	0	2	2	1	0	0	0	0	0
N17	#6/6 Duke	Did not play												
N20	#10/9 Ohio State	Did not play												
N22	Colorado State	12	0-1	0-1	0-0	1	1	2	0	2	1	0	0	0
N26	at USC	4	0-0	0-0	0-0	0	0	0	0	0	0	0	1	0
N30	at Valparaiso	7	0-0	0-0	0-0	0	1	1	0	0	0	0	0	0
D2	#15/15 Michigan St.	4	0-0	0-0	0-0	0	0	0	0	0	0	0	0	0
D9	at Dayton	20	1-7	0-2	0-0	3	3	6	0	3	1	1	1	2
D11	Washington	2	0-0	0-0	0-0	0	0	0	0	0	1	0	0	0
D19	at Marquette	17	1-3	0-1	0-0	0	2	2	1	1	0	0	1	2
D30	at Northern Illinois	12	1-1	0-0	0-0	1	0	1	0	1	1	0	0	2
J2	Seton Hall*	3	0-0	0-0	0-0	0	1	1	0	0	0	0	0	0
J5	Syracuse*	9	0-2	0-2	0-0	0	1	1	0	0	0	0	0	0
J9	at Villanova*	2	0-0	0-0	0-0	0	0	0	0	0	0	0	0	0
J12	#16/16 Connecticut*	Did not play												
J16	#20/20 Purdue	2	0-0	0-0	0-0	0	0	0	0	0	0	0	0	0
J19	at Syracuse*	1	0-0	0-0	0-0	0	0	0	0	0	0	0	0	0
J23	#6/7 Rutgers*	Did not play												
J26	St. John's*	Did not play												
J30	at #9/10 Connecticut*	Did not play												
F2	#16/13 BC*	Did not play												
F5	at Pittsburgh*	8	0-0	0-0	0-0	0	1	1	0	0	0	2	0	0
F9	at Providence*	5	0-0	0-0	0-0	0	0	0	0	0	1	0	0	0
F12	Georgetown*	Did not play												
F15	at Boston College*	Did not play												
F19	at Rutgers*	Did not play												
F26	West Virginia*	Did not play												
M2	at Seton Hall*	Did not play												

* - indicates BIG EAST Conference game // ^ - indicates game started

Powers' Career Statistics

Season	GP-GS	Min.-Avg.	FG-FGA	Pct.	3FG-3FGA	Pct.	FT-FTA	Pct.	Off	Def	Tot	Avg	PF-DQ	A	T	B	S	Pts	Avg
2003-04	21-0	123-5.9	4-18	.222	2-13	.154	3-7	.429	4	15	19	0.9	5-0	10	14	0	5	13	0.6
2004-05	17-0	137-8.1	4-21	.190	1-10	.100	0-0	.000	5	14	19	1.1	3-0	11	5	3	4	9	0.5
TOTALS	38-0	260-6.8	8-39	.205	3-23	.130	3-7	.429	9	29	38	1.0	8-0	21	19	3	9	22	0.6



Career Highs

Points

Career 6 vs. Illinois State (11/12/04)

Rebounds

Career 6 at Dayton (12/9/04)

Assists

Career 4 vs. Illinois State (11/12/04)

Field Goals

Career 2, twice (MR: vs. Ill. St., 11/12/04)

Field Goal Attempts

Career 7 at Dayton (12/9/04)

Three-Point Field Goals

Career 2 vs. Illinois State (11/12/04)

Three-Point Field Goal Attempts

Career 4, twice (MR: vs. Ill. St., 11/12/04)

Free Throws

Career 2 at Michigan State (11/26/03)

Free Throw Attempts

Career ... 2, three times (MR: vs. Prov., 2/14/04)

Steals

Career 3 vs. Dayton (12/13/03)

Blocked Shots

Career 2 at Pittsburgh (2/5/05)

Minutes Played

Career 22 vs. Dayton (12/13/03)

Miscellaneous

Double-doubles 0/0

Double-figure scoring games 0/0

20-point games 0/0

Double-figure rebound games 0/0

5-assist games 0/0

Double-figure assist games 0/0

(noted in season/career format)

#11 Amanda Tsipis

Guard • 5-10 • Fr.-HS • Perry, Ohio (Perry HS)

2004-05 Highlights

- Scored first collegiate basket on baseline jumper late in season-opening victory vs. Illinois State.
- Tallied first career assist in win at Dayton.
- Converted both of her free throw attempts (first of her career) at Northern Illinois.
- Grabbed first career rebound and played career-best five minutes at Pittsburgh.

2004-05 Game-By-Game Statistics

Date	Opponent	Min	FG-FGA	3FG-FGA	FT-FTA	Off	Def	Tot	PF	A	TO	Blk	Stl	Pts
N12	Illinois State	4	1-1	0-0	0-0	0	0	0	0	0	0	0	0	2
N14	Nebraska	2	0-0	0-0	0-0	0	0	0	0	0	0	0	0	0
N17	#6/6 Duke	Did not play												
N20	#10/9 Ohio State	Did not play												
N22	Colorado State	3	0-0	0-0	0-0	0	0	0	0	0	0	0	0	0
N26	at USC	Did not play												
N30	at Valparaiso	Did not play												
D2	#15/15 Michigan St.	Did not play												
D9	at Dayton	4	0-0	0-0	0-0	0	0	0	0	1	0	0	0	0
D11	Washington	Did not play												
D19	at Marquette	Did not play												
D30	at Northern Illinois	4	0-1	0-0	2-2	0	0	0	0	0	0	0	0	2
J2	Seton Hall*	2	0-1	0-0	0-0	0	0	0	0	0	0	0	0	0
J5	Syracuse*	1	0-0	0-0	0-0	0	0	0	0	0	0	0	0	0
J9	at Villanova*	Did not play												
J12	#16/16 Connecticut*	Did not play												
J16	#20/20 Purdue	2	0-0	0-0	0-0	0	0	0	0	0	0	0	0	0
J19	at Syracuse*	Did not play												
J23	#6/7 Rutgers*	Did not play												
J26	St. John's*	Did not play												
J30	at #9/10 Connecticut*	Did not play												
F2	#16/13 BC*	Did not play												
F5	at Pittsburgh*	5	0-1	0-0	0-0	1	0	1	0	0	2	0	0	0
F9	at Providence*	Did not play												
F12	Georgetown*	Did not play												
F15	at Boston College*	Did not play												
F19	at Rutgers*	Did not play												
F26	West Virginia*	Did not play												
M2	at Seton Hall*	Did not play												

* - indicates BIG EAST Conference game // ^ - indicates game started

Tsipis' Career Statistics

Season	GP-GS	Min.-Avg.	FG-FGA	Pct.	3FG-3FGA	Pct.	FT-FTA	Pct.	Off	Def	Tot	Avg	PF-DQ	A	T	B	S	Pts	Avg
2004-05	9-0	27-3.0	1-4	.250	0-0	.000	2-2	1.000	1	0	1	0.1	0-0	1	2	0	0	4	0.4
TOTALS	9-0	27-3.0	1-4	.250	0-0	.000	2-2	1.000	1	0	1	0.1	0-0	1	2	0	0	4	0.4



Career Highs

Points

Career 2, twice (MR: at NIU, 12/30/04)

Rebounds

Career 1 at Pittsburgh (2/5/05)

Assists

Career 1 at Dayton (12/9/04)

Field Goals

Career 1 vs. Illinois State (11/12/04)

Field Goal Attempts

Career 1, four times (MR: at Pittsburgh, 2/5/05)

Three-Point Field Goals

Career None

Three-Point Field Goal Attempts

Career None

Free Throws

Career 2 at Northern Illinois (12/30/04)

Free Throw Attempts

Career 2 at Northern Illinois (12/30/04)

Steals

Career None

Blocked Shots

Career None

Minutes Played

Career 5 at Pittsburgh (2/5/05)

Miscellaneous

Double-doubles 0/0

Double-figure scoring games 0/0

20-point games 0/0

Double-figure rebound games 0/0

5-assist games 0/0

Double-figure assist games 0/0

(noted in season/career format)

#12 Teresa Borton

Center • 6-3 • Sr.-3V • Yakima, Wash. (West Valley HS)

2004-05 Highlights

- Scored 11 points (4-7 FG) and added five rebounds in season opener against Illinois State.
- Had third career double-double (first since Feb. 5, 2002 at Pittsburgh) with 13 points and 11 rebounds vs. Nebraska.
- Had three blocks and limited Duke's Mistie Williams to 10 points (with six turnovers) in victory over Blue Devils.
- Became seventh player in school history with 100 career blocks after swatting two shots vs. Ohio State.
- Just missed double-double vs. Michigan State, finishing with nine points, nine rebounds and career-high six blocks.
- Returned to double figures with 10 points (5-7 FG) and added two steals vs. Washington.
- Collected 17 points (6-7 FG) in only 22 minutes against Syracuse.
- Added 17 points (6-8 FG) for second consecutive game in career-high tying 37 minutes at Villanova.
- Posted game highs of nine rebounds and three blocks while hitting 3-of-5 shots against Connecticut.
- Scored season-high 18 points (8-11 FG) and grabbed nine rebounds vs. Purdue.
- Rang up 12 points (5-7 FG), seven rebounds and three blocks against St. John's.
- Matched career best with 11 rebounds (seven offensive) in victory at Connecticut.
- Chipped in with 12 points (6-10 FG) and team-high six rebounds against Boston College.
- Registered 10 points (5-7 FG), seven rebounds and four blocks at Pittsburgh.
- Picked up third consecutive double-figure scoring game with 10 points (5-8 FG) at Providence.
- Notched second double-double of season (fourth career) with 14 points and career-high 12 rebounds vs. Georgetown.
- Averaging 11.2 points and 7.2 rebounds per game with .630 FG% (58-92) in past 12 contests.

2004-05 Game-By-Game Statistics

Date	Opponent	Min	FG-FGA	3FG-FGA	FT-FTA	Off	Def	Tot	PF	A	TO	Blk	Stl	Pts
N12	Illinois State [^]	16	4-7	0-0	3-4	4	1	5	2	2	1	1	0	11
N14	Nebraska [^]	24	6-10	0-0	1-1	5	6	11	3	1	0	2	0	13
N17	#6/6 Duke [^]	29	3-7	0-0	1-2	3	3	6	3	1	0	3	0	7
N20	#10/9 Ohio State [^]	23	1-4	0-0	2-2	2	2	4	3	1	0	2	1	4
N22	Colorado State [^]	19	3-6	0-0	3-3	4	1	5	4	0	4	1	0	9
N26	at USC [^]	21	1-3	0-0	0-2	0	5	5	4	1	3	1	0	2
N30	at Valparaiso [^]	23	2-4	0-0	2-2	3	6	9	4	1	2	1	0	6
D2	#15/15 Michigan St. [^]	33	3-8	0-0	3-4	6	3	9	2	2	2	6	2	9
D9	at Dayton [^]	20	3-4	0-0	2-4	1	3	4	2	0	1	0	0	8
D11	Washington [^]	26	5-7	0-0	0-0	2	1	3	4	2	4	1	2	10
D19	at Marquette [^]	22	1-1	0-0	1-2	0	2	2	4	1	0	3	1	3
D30	at Northern Illinois [^]	23	1-2	0-0	4-4	1	3	4	3	4	4	1	3	6
J2	Seton Hall [^]	26	2-4	0-0	0-2	0	1	1	2	1	0	0	0	4
J5	Syracuse [^]	22	6-7	0-0	5-6	5	1	6	3	3	2	0	2	17
J9	at Villanova [^]	37	6-8	0-0	5-6	1	4	5	3	0	2	2	2	17
J12	#16/16 Connecticut [^]	29	3-5	0-0	1-3	2	7	9	3	0	0	3	0	7
J16	#20/20 Purdue [^]	31	8-11	0-0	2-3	5	4	9	2	1	2	1	1	18
J19	at Syracuse [^]	20	4-11	0-0	0-0	4	2	6	3	0	1	1	1	8
J23	#6/7 Rutgers [^]	20	1-3	0-0	2-2	4	0	4	0	0	3	2	1	4
J26	St. John's [^]	28	5-7	0-0	2-2	3	4	7	1	3	1	3	0	12
J30	at #9/10 Connecticut [^]	27	2-5	0-0	1-2	7	4	11	3	1	1	1	1	5
F2	#16/13 BC [^]	30	6-10	0-0	0-2	3	3	6	4	1	1	1	1	12
F5	at Pittsburgh [^]	21	5-7	0-0	0-0	4	3	7	2	1	0	4	2	10
F9	at Providence [^]	26	5-8	0-0	0-2	2	2	4	2	1	1	1	0	10
F12	Georgetown [^]	33	7-10	0-0	0-1	4	8	12	2	0	1	2	0	14
F15	at Boston College*													
F19	at Rutgers*													
F26	West Virginia*													
M2	at Seton Hall*													

* - indicates BIG EAST Conference game // ^ - indicates game started

Borton's Career Statistics

Season	GP-GS	Min.-Avg.	FG-FGA	Pct.	3FG-3FGA	Pct.	FT-FTA	Pct.	Off	Def	Tot	Avg	PF-DQ	A	T	B	S	Pts	Avg
2001-02	30-6	609-20.3	76-153	.497	0-0	.000	27-57	.474	79	66	145	4.8	62-2	31	31	19	13	179	6.0
2002-03	32-32	778-24.3	108-188	.574	0-0	.000	41-59	.695	66	94	160	5.0	69-2	28	41	42	24	257	8.0
2003-04	32-20	633-19.8	74-140	.529	0-0	.000	37-52	.712	58	71	129	4.0	64-2	32	33	32	18	185	5.8
2004-05	25-25	629-25.2	93-159	.585	0-0	.000	40-61	.656	75	79	154	6.2	68-0	28	36	43	20	226	9.0
TOTALS	119-83	2649-22.3	351-640	.548	0-0	.000	145-229	.633	278	310	588	4.9	263-6	119	141	136	75	847	7.1



Career Highs

Points

Career 21 at Connecticut (2/23/03)

Rebounds

Career 12 vs. Georgetown (2/12/05)

Assists

Career 4, four times (MR: at NIU, 12/30/04)

Field Goals

Career ... 9, twice (MR: vs. Clev. St., 11/26/03)

Field Goal Attempts

Career .. 13 vs. Cleveland State (11/26/03)

Three-Point Field Goals

Career None

Three-Point Field Goal Attempts

Career None

Free Throws

Career 7, twice (MR: vs. Pitt., 2/26/03)

Free Throw Attempts

Career 7, four times (MR: vs. VT, 1/10/04)

Steals

Career 3, twice (MR: at NIU, 12/30/04)

Blocked Shots

Career 6 vs. Michigan State (12/2/04)

Minutes Played

Career ... 37, three times (MR: at Villanova, 1/9/05)

Miscellaneous

Double-doubles 2/4

Double-figure scoring games 11/35

20-point games 0/2

Double-figure rebound games 3/8

5-block games 1/3

(noted in season/career format)

#13 Megan Duffy

Guard • 5-7 • Jr.-2V • Dayton, Ohio (Chaminade-Julienne HS)

2004-05 Highlights

- Had 12 points (4-7 FG, 2-3 3FG) and dished out eight assists with only two turnovers in win over Illinois State.
- Tallied 15 points and seven assists vs. Duke; also made 9-10 FT, including 7-8 in final 3:10.
- Scored 15 points (5-7 FG, 3-4 3FG) and handed out six assists in Preseason WNIT title game vs. Ohio State.
- Picked up game-high 15 points (6-6 FT), five assists and career-best seven steals against Colorado State.
- Scored 12 points (8-8 FT), including four key free throws in final half-minute of victory at USC.
- Poured in season-high 20 points (including 500th of her career) with no turnovers in 39 minutes at Valparaiso.
- Registered 19 points while playing all 45 minutes in overtime loss vs. Michigan State.
- Notched first career double-digit assist game with 10 handouts against Washington.
- Matched career high with seven steals at Marquette.
- Shared game-high scoring honors vs. Syracuse with 17 points (6-11 FG, 3-6 3FG), while adding six assists.
- Poured in 19 points (17 in first half), including 3-4 3FG, and added six assists in victory over Purdue.
- Chalked up solid all-around game at Syracuse with 17 points, six assists, five rebounds and four steals.
- Passed out career-high 11 assists with three turnovers (8 A, 1 TO in second half) vs. Rutgers.
- Had first career double-double (14p, 10a) vs. St. John's; first Irish player with back-to-back 10+-assist games since Nov. 2000.
- Collected 12 points (4-4 FT in last three minutes) and tied career high with seven steals in win at Connecticut.
- Dished out all of her game-high nine assists in the first half at Pittsburgh; also had no turnovers in first half (two in second).
- Carded 17 points (9-10 FT) and seven assists without a turnover against Georgetown.
- Has logged five-or-more assists in 11 of past 12 games, averaging 7.0 assists per contest with a 2.40 assist/turnover ratio (84 assists, 35 turnovers) in that span ... has only six turnovers in past four games (1.5 topg.).
- Ranks among NCAA leaders in free throw percentage (fourth) and assists (26th), as of Feb. 8.

2004-05 Game-By-Game Statistics

Date	Opponent	Min	FG-FGA	3FG-FGA	FT-FTA	Off	Def	Tot	PF	A	TO	Blk	Stl	Pts
N12	Illinois State [^]	36	5-8	3-4	2-2	0	1	1	1	8	2	0	2	15
N14	Nebraska [^]	34	1-8	1-5	4-4	0	5	5	1	3	1	0	3	7
N17	#6/6 Duke [^]	40	2-3	2-2	9-10	0	3	3	1	7	3	0	0	15
N20	#10/9 Ohio State [^]	40	5-7	3-4	2-2	0	3	3	2	6	9	0	2	15
N22	Colorado State [^]	36	4-9	1-4	6-6	0	1	1	1	5	1	0	7	15
N26	at USC [^]	33	2-6	0-3	8-8	0	4	4	2	2	5	0	2	12
N30	at Valparaiso [^]	39	6-13	2-6	6-6	1	4	5	2	4	0	0	2	20
D2	#15/15 Michigan St. [^]	45	5-13	3-6	6-8	0	5	5	3	0	2	0	1	19
D9	at Dayton [^]	33	2-6	1-2	0-0	1	1	2	2	5	2	0	4	5
D11	Washington [^]	39	2-5	0-2	2-2	0	4	4	1	10	6	0	3	6
D19	at Marquette [^]	39	1-7	0-2	3-4	1	1	2	0	3	1	0	7	5
D30	at Northern Illinois [^]	25	3-8	2-5	1-2	0	2	2	3	1	0	0	1	9
J2	Seton Hall [^]	32	3-11	1-6	3-3	1	3	4	0	3	3	0	6	10
J5	Syracuse [^]	39	6-11	3-6	2-2	0	3	3	2	6	5	0	2	17
J9	at Villanova [^]	40	0-2	0-0	2-3	0	3	3	2	7	0	0	1	2
J12	#16/16 Connecticut [^]	40	3-9	0-1	0-0	0	2	2	2	9	7	0	1	6
J16	#20/20 Purdue [^]	37	4-7	3-4	8-8	0	2	2	1	6	3	0	2	19
J19	at Syracuse [^]	39	6-9	1-3	4-4	1	4	5	0	6	3	1	4	17
J23	#6/7 Rutgers [^]	40	2-4	1-3	2-2	0	1	1	1	11	3	0	2	7
J26	St. John's [^]	38	3-14	2-6	6-7	0	3	3	3	10	4	0	2	14
J30	at #9/10 Connecticut [^]	40	2-4	1-3	7-8	0	4	4	3	5	4	0	7	12
F2	#16/13 BC [^]	38	2-5	0-2	5-6	0	6	6	2	3	3	0	3	9
F5	at Pittsburgh [^]	25	1-5	0-4	4-4	0	2	2	2	9	2	0	1	6
F9	at Providence [^]	34	3-6	2-4	0-0	0	3	3	1	5	1	0	1	8
F12	Georgetown [^]	38	3-8	2-7	9-10	0	3	3	2	7	0	0	2	17
F15	at Boston College [*]													
F19	at Rutgers [*]													
F26	West Virginia [*]													
M2	at Seton Hall [*]													

^{*} - indicates BIG EAST Conference game // [^] - indicates game started

Duffy's Career Statistics

Season	GP-GS	Min.-Avg.	FG-FGA	Pct.	3FG-3FGA	Pct.	FT-FTA	Pct.	Off	Def	Tot	Avg	PF-DQ	A	T	B	S	Pts	Avg
2002-03	32-5	748-23.4	22-91	.242	7-35	.200	45-59	.763	9	51	60	1.9	59-1	73	78	1	26	96	3.0
2003-04	32-31	1066-33.3	93-231	.403	46-114	.404	86-105	.819	11	82	93	2.9	56-0	125	92	1	45	318	9.9
2004-05	25-25	919-36.8	76-188	.404	34-94	.362	101-111	.910	5	73	78	3.1	40-0	141	70	1	68	287	11.5
TOTALS	89-61	2733-30.7	191-510	.375	87-243	.358	232-275	.844	25	206	231	2.6	155-1	339	240	3	139	701	7.9



Career Highs

Points

Career 25 vs. Wisconsin (12/4/03)

Rebounds

Career 8 vs. Villanova (3/9/03)

Assists

Career 11 vs. Rutgers (1/23/05)

Field Goals

Career 8 vs. Wisconsin (12/4/03)

Field Goal Attempts

Career 14 vs. St. John's (1/26/05)

Three-Point Field Goals

Career 6 vs. Wisconsin (12/4/03)

Three-Point Field Goal Attempts

Career 10 vs. Wisconsin (12/4/03)

Free Throws

Career 11 at St. John's (2/17/04)

Free Throw Attempts

Career 13 at St. John's (2/17/04)

Steals

Career .. 7, three times (MR: at UConn, 1/30/05)

Blocked Shots

Career .. 1, three times (MR: at Syracuse, 1/19/05)

Minutes Played

Career 45 vs. Michigan State (12/2/04)

Miscellaneous

Double-doubles 1/1

Double-figure scoring games 14/33

20-point games 1/3

Double-figure assist games 3/3

5-assist games 17/34

5-steal games 4/4

(noted in season/career format)

#21 Jacqueline Batteast

Forward • 6-2 • Sr.-3V • South Bend, Ind. (Washington HS)

**** NATIONAL PLAYER OF THE YEAR CANDIDATE ****

2004-05 Highlights

- Had strong all-around game vs. Nebraska, tallying 24 points, six rebounds and a career-high tying seven assists.
- Scored game-high 17 points against Duke, including 10 in row during a game-changing 12-2 run in the second half; also tied career high with seven assists for second consecutive game.
- Named **Preseason WNIT MVP** and **BIG EAST Player of the Week** after pouring in career-best 32 points in WNIT title game vs. Ohio State; seven points in game-ending 12-0 run (go-ahead basket with 2:45 left) and blocked potential game-tying 3FG with two ticks left.
- Registered game highs of 25 points and 10 rebounds at Valparaiso for first double-double of the season.
- Picked up second double-double of season with 17 points and game-high 10 rebounds vs. Washington.
- Logged second consecutive double-double (third of year) with game highs of 27 points and 10 rebounds at Marquette; also buried game-winning three-pointer as time expired ... named **BIG EAST Player of the Week** for second time.
- Scored game-high 21 points (8-12 FG) in victory at Northern Illinois.
- Led all scorers with 18 points (8-13 FG) in conference opener vs. Seton Hall.
- Piled up fourth double-double of season with game highs of 21 points and 11 rebounds against Purdue.
- Tallied 18 of game-high 27 points in second half vs. Rutgers, outscoring Knights, 18-16 in final period ... had team's first 12 points of second half to key rally from 11-point halftime deficit ... named **BIG EAST Player of the Week** for third time.
- Earned fifth double-double of season with 10 points and 10 rebounds against St. John's.
- Collected sixth double-double of year at Providence with game highs of 23 points and 10 rebounds; also became fourth player in school history to record 900 career rebounds.
- Had 20 points, eight rebounds and five assists vs. Georgetown ... named **BIG EAST Player of the Week** for fourth time.

2004-05 Game-By-Game Statistics

Date	Opponent	Min	FG-FGA	3FG-FGA	FT-FTA	Off	Def	Tot	PF	A	TO	Blk	Stl	Pts
N12	Illinois State [^]	17	6-11	1-2	0-0	2	3	5	3	3	0	0	1	13
N14	Nebraska [^]	36	10-18	0-0	4-5	1	5	6	1	7	0	2	0	24
N17	#6/6 Duke [^]	28	7-15	1-1	2-2	1	4	5	3	7	3	0	2	17
N20	#10/9 Ohio State [^]	38	11-23	0-2	10-12	3	1	4	3	0	3	3	2	32
N22	Colorado State [^]	30	4-12	0-0	6-9	3	6	9	0	7	1	2	4	14
N26	at USC [^]	39	7-20	0-0	4-4	1	4	5	2	4	4	2	3	18
N30	at Valparaiso [^]	36	9-19	1-2	6-6	4	6	10	2	1	0	0	1	25
D2	#15/15 Michigan St. [^]	44	6-25	0-2	4-4	4	5	9	3	4	4	3	0	16
D9	at Dayton [^]	32	3-4	0-1	1-2	0	7	7	1	0	3	0	0	7
D11	Washington [^]	32	7-13	0-0	3-5	2	8	10	4	4	1	0	2	17
D19	at Marquette [^]	40	9-16	1-3	8-8	2	8	10	2	3	1	1	0	27
D30	at Northern Illinois [^]	30	8-12	1-1	4-4	1	2	3	3	2	1	0	1	21
J2	Seton Hall [^]	36	8-13	0-1	2-6	3	4	7	1	2	2	1	1	18
J5	Syracuse [^]	28	5-13	1-2	4-4	4	3	7	1	4	3	2	2	15
J9	at Villanova [^]	36	8-18	2-2	4-6	1	5	6	5	2	4	2	1	22
J12	#16/16 Connecticut [^]	34	2-12	0-2	4-4	1	4	5	1	0	3	0	2	8
J16	#20/20 Purdue [^]	32	7-17	1-2	6-7	5	6	11	2	5	3	3	0	21
J19	at Syracuse [^]	28	7-13	0-1	5-5	0	2	2	4	3	1	0	2	19
J23	#6/7 Rutgers [^]	38	10-20	1-1	6-6	2	4	6	1	1	2	2	0	27
J26	St. John's [^]	39	5-8	0-0	0-0	3	7	10	0	0	2	4	1	10
J30	at #9/10 Connecticut [^]	37	3-17	1-2	2-3	0	3	3	1	4	3	1	1	9
F2	#16/13 BC [^]	24	7-15	0-1	1-2	1	2	3	2	3	0	1	2	15
F5	at Pittsburgh [^]	15	4-10	2-2	2-2	2	1	3	3	1	1	1	0	12
F9	at Providence [^]	32	6-15	1-4	10-13	4	6	10	2	4	0	1	0	23
F12	Georgetown [^]	38	8-18	0-3	4-4	3	5	8	1	5	5	2	1	20
F15	at Boston College [*]													
F19	at Rutgers [*]													
F26	West Virginia [*]													
M2	at Seton Hall [*]													

^{*} - indicates BIG EAST Conference game // [^] - indicates game started

Batteast's Career Statistics

Season	GP-GS	Min.-Avg.	FG-FGA	Pct.	3FG-3FGA	Pct.	FT-FTA	Pct.	Off	Def	Tot	Avg	PF-DQ	A	T	B	S	Pts	Avg
2001-02	26-22	718-27.6	132-327	.404	27-81	.333	67-100	.670	68	136	204	7.8	61-1	53	75	36	35	358	13.8
2002-03	32-32	1022-31.9	179-461	.388	9-46	.196	78-116	.672	95	172	267	8.3	78-4	81	99	50	63	445	13.9
2003-04	32-32	1052-32.9	204-451	.452	10-29	.345	94-150	.627	91	185	276	8.6	76-1	73	90	38	48	512	16.0
2004-05	25-25	819-32.8	167-377	.443	14-37	.378	102-123	.829	53	111	164	6.6	51-1	76	50	33	29	450	18.0
TOTALS	115-111	3611-31.4	682-1616	.422	60-193	.311	341-489	.697	307	604	911	7.9	266-7	283	314	157	175	1765	15.3



Career Highs

Points

Career 32 vs. Ohio State (11/20/04)

Rebounds

Career 18 at Connecticut (2/23/03)

Assists

Career 7, four times (MR: vs. CSU, 11/22/04)

Field Goals

Career 13 vs. Middle Tenn. (3/23/04)

Field Goal Attempts

Career 25 vs. Michigan State (12/2/04)

Three-Point Field Goals

Career 3 vs. Michigan (12/2/01)

Three-Point Field Goal Attempts

Career 8 vs. Michigan (12/2/01)

Free Throws

Career 11 vs. Providence (1/5/02)

Free Throw Attempts

Career 13 at Providence (2/9/05)

Steals

Career 6 vs. Miami (2/25/04)

Blocked Shots

Career 5 at Virginia Tech (2/9/03)

Minutes Played

Career 44 vs. Michigan State (12/2/04)

Miscellaneous

Double-doubles 6/38

Double-figure scoring games 22/94

20-point games 10*/31*

Double-figure rebound games 6/41

5-assist games 5/14

(noted in season/career format; * - one 30-pt. game)

#32 Breona Gray

Guard • 5-7 • So.-1V • Las Vegas, Nev. (Bishop Gorman HS)

2004-05 Highlights

- Came up with four points, six rebounds and career-high three steals in victory over Illinois State.
- Piled up 12 points and career-high tying seven rebounds vs. Nebraska.
- Had six points and (then) career-high tying two assists vs. Duke.
- Career-high three assists and added six rebounds vs. Ohio State (third six-rebound game in four outings).
- Canned first career three-point field goal in win over Colorado State.
- Buried clutch jumper with shot clock winding down in final minute to help seal win at USC.
- Collected six points and three rebounds in victory at Valparaiso.
- Distributed four assists in career-best 35 minutes against Michigan State.
- Rolled up 12 points (all in second half) in win at Dayton.
- Scored 11 points (5-6 FG) and grabbed five rebounds in 31 minutes vs. Washington.
- Tallied six points and five rebounds in victory at Northern Illinois.
- Erupted for career-high 17 points (6-12 FG) and tied personal best with seven rebounds vs. Syracuse.
- Dished out career-best five assists and knocked down second career three-pointer against Purdue.
- Put up eight points and three assists vs. St. John's.
- Contributed eight points (including 2 FT in final second) and five rebounds in victory at Connecticut.
- Added eight points (4-5 FG) at Providence.
- Has made six of seven shots from the floor in past two games.
- Currently stands as one of team's most improved players, more than **doubling** her scoring, rebounding, assists, steals and minutes averages from a year ago while becoming an everyday starter for the first time.

2004-05 Game-By-Game Statistics

Date	Opponent	Min	FG-FGA	3FG-FGA	FT-FTA	Off	Def	Tot	PF	A	TO	Blk	Stl	Pts
N12	Illinois State [^]	23	2-5	0-0	0-1	3	3	6	4	2	6	0	3	4
N14	Nebraska [^]	31	6-13	0-1	0-0	3	4	7	2	2	2	0	1	12
N17	#6/6 Duke [^]	23	2-7	0-0	2-2	1	1	2	1	2	1	0	2	6
N20	#10/9 Ohio State [^]	33	1-2	0-0	2-3	1	5	6	0	3	1	0	1	4
N22	Colorado State [^]	21	1-4	1-1	0-0	0	2	2	2	0	5	0	2	3
N26	at USC [^]	21	1-5	0-0	2-2	1	1	2	2	2	2	0	1	4
N30	at Valparaiso [^]	26	3-8	0-0	0-0	1	2	3	1	3	2	1	1	6
D2	#15/15 Michigan St. [^]	35	1-5	0-0	0-0	1	3	4	2	4	2	0	1	2
D9	at Dayton [^]	19	4-10	0-0	4-4	0	1	1	0	2	0	0	2	12
D11	Washington [^]	31	5-6	0-0	1-2	0	5	5	0	2	2	0	1	11
D19	at Marquette [^]	22	2-5	0-0	1-2	0	3	3	1	2	3	0	0	5
D30	at Northern Illinois [^]	25	3-6	0-0	0-0	1	4	5	0	0	3	0	2	6
J2	Seton Hall [^]	15	0-6	0-0	0-2	1	3	4	0	2	0	0	3	0
J5	Syracuse [^]	32	6-12	0-0	5-7	5	2	7	0	4	1	0	1	17
J9	at Villanova [^]	35	3-8	0-0	0-0	0	4	4	1	0	3	0	1	6
J12	#16/16 Connecticut [^]	21	1-5	0-0	0-0	0	2	2	0	1	0	0	0	2
J16	#20/20 Purdue [^]	25	2-5	1-1	0-0	0	3	3	2	5	1	0	2	5
J19	at Syracuse [^]	18	0-5	0-0	0-0	2	2	4	0	2	2	0	0	0
J23	#6/7 Rutgers [^]	17	1-1	0-0	2-2	1	0	1	0	0	0	0	1	4
J26	St. John's [^]	23	3-7	0-0	2-2	0	2	2	0	3	0	0	1	8
J30	at #9/10 Connecticut [^]	25	2-8	0-0	4-4	1	4	5	0	2	0	0	1	8
F2	#16/13 BC [^]	27	0-3	0-0	1-2	1	2	3	1	0	1	0	3	1
F5	at Pittsburgh [^]	18	0-5	0-0	0-0	2	2	4	1	2	2	0	1	0
F9	at Providence [^]	16	4-5	0-0	0-2	0	1	1	0	0	0	1	0	8
F12	Georgetown [^]	21	2-2	0-0	1-2	2	0	2	0	1	3	0	1	5
F15	at Boston College [*]													
F19	at Rutgers [*]													
F26	West Virginia [*]													
M2	at Seton Hall [*]													

* - indicates BIG EAST Conference game // ^ - indicates game started

Gray's Career Statistics

Season	GP-GS	Min.-Avg.	FG-FGA	Pct.	3FG-3FGA	Pct.	FT-FTA	Pct.	Off	Def	Tot	Avg	PF-DQ	A	T	B	S	Pts	Avg
2003-04	29-0	330-11.4	24-58	.414	0-10	.000	17-27	.630	13	32	45	1.6	25-0	8	25	2	13	65	2.2
2004-05	25-25	603-24.1	55-148	.372	2-3	.667	27-39	.692	27	61	88	3.5	20-0	46	42	2	32	139	5.6
TOTALS	54-25	933-17.3	79-206	.383	2-13	.154	44-66	.667	40	93	133	2.5	45-0	54	67	4	45	204	3.8



Career Highs

Points

Career 17 vs. Syracuse (1/5/05)

Rebounds

Career .. 7, twice (MR: vs. Syracuse, 1/5/05)

Assists

Career 5 vs. Purdue (1/16/05)

Field Goals

Career .. 6, twice (MR: vs. Syracuse, 1/5/05)

Field Goal Attempts

Career 13 vs. Nebraska (11/14/04)

Three-Point Field Goals

Career ... 1, twice (MR: vs. Purdue, 1/16/05)

Three-Point Field Goal Attempts

Career 3 at Purdue (1/4/04)

Free Throws

Career 5 vs. Syracuse (1/5/05)

Free Throw Attempts

Career 7 vs. Syracuse (1/5/05)

Steals

Career .. 3, three times (MR: vs. BC, 2/2/05)

Blocked Shots

Career ... 1, four times (MR: at Providence, 2/9/05)

Minutes Played

Career .. 35, twice (MR: at Villanova, 1/9/05)

Miscellaneous

Double-doubles 0/0

Double-figure scoring games 4/5

20-point games 0/0

Double-figure rebound games 0/0

5-assist games 1/1

5-steal games 0/0

(noted in season/career format)

#33 Melissa D'Amico

Forward/Center • 6-5 • Fr.-HS • Manorville, N.Y. (William Floyd HS)

2004-05 Highlights

- Scored first collegiate basket on putback and grabbed five rebounds against Illinois State.
- Had three points and five rebounds in victory over Nebraska.
- Notched two points and two rebounds, while playing strong post defense in Preseason WNIT title game vs. Ohio State.
- Talled three points and blocked a shot against Colorado State.
- Registered five points (including old-fashioned three-point play) in win at USC.
- Played 13 minutes (two points) at Valparaiso.
- Had a blocked shot and two rebounds in three minutes vs. Michigan State.
- Turned in best night of young career at Dayton with season highs of 12 points, 6-8 FG and 19 minutes played.
- Rang up season-high three blocked shots at Northern Illinois.
- Had two points and a rebound in conference debut vs. Seton Hall.
- Scored four points and grabbed two rebounds against Syracuse.
- Contributed four points (2-3FG) in four minutes vs. Boston College.
- Added three points and two rebounds in 12 minutes at Pittsburgh.

2004-05 Game-By-Game Statistics

Date	Opponent	Min	FG-FGA	3FG-FGA	FT-FTA	Off	Def	Tot	PF	A	TO	Blk	Stl	Pts
N12	Illinois State	8	1-6	0-0	0-2	4	1	5	2	0	2	1	1	2
N14	Nebraska	12	1-3	0-0	1-2	3	2	5	0	0	1	1	0	3
N17	#6/6 Duke	Did not play												
N20	#10/9 Ohio State	9	1-2	0-0	0-0	1	1	2	3	0	1	0	1	2
N22	Colorado State	8	1-2	0-0	1-2	0	0	0	1	1	0	1	0	3
N26	at USC	7	2-2	0-0	1-1	0	3	3	1	0	0	1	0	5
N30	at Valparaiso	13	1-3	0-0	0-0	0	0	0	3	0	0	0	1	2
D2	#15/15 Michigan St.	3	0-2	0-0	0-0	0	2	2	1	0	1	1	0	0
D9	at Dayton	19	6-8	0-0	0-1	2	2	4	2	0	1	0	0	12
D11	Washington	4	0-1	0-0	0-0	0	1	1	1	0	0	0	0	0
D19	at Marquette	7	0-2	0-0	0-0	0	0	0	4	0	0	1	0	0
D30	at Northern Illinois	9	0-1	0-0	2-4	1	2	3	4	1	3	3	0	2
J2	Seton Hall*	3	1-1	0-0	0-0	0	1	1	1	0	1	0	0	2
J5	Syracuse*	11	2-5	0-0	0-0	0	2	2	2	1	0	0	0	4
J9	at Villanova*	2	0-0	0-0	0-0	0	1	1	0	0	0	0	0	0
J12	#16/16 Connecticut*	Did not play												
J16	#20/20 Purdue	2	0-2	0-0	0-0	1	0	1	0	0	0	0	0	0
J19	at Syracuse*	2	0-0	0-0	0-0	0	0	0	1	0	0	0	0	0
J23	#6/7 Rutgers*	1	0-0	0-0	0-0	0	0	0	0	0	0	0	0	0
J26	St. John's*	3	0-1	0-0	0-0	0	1	1	1	0	0	0	0	0
J30	at #9/10 Connecticut*	2	0-0	0-0	0-0	0	0	0	0	0	0	0	0	0
F2	#16/13 BC*	4	2-3	0-0	0-0	1	0	1	1	0	0	0	0	4
F5	at Pittsburgh*	12	1-1	0-0	1-2	0	2	2	2	0	3	1	0	3
F9	at Providence*	4	0-0	0-0	1-2	1	1	2	1	0	0	1	0	1
F12	Georgetown*	Did not play												
F15	at Boston College*													
F19	at Rutgers*													
F26	West Virginia*													
M2	at Seton Hall*													

* - indicates BIG EAST Conference game // ^ - indicates game started

D'Amico's Career Statistics

Season	GP-GS	Min.-Avg.	FG-FGA	Pct.	3FG-3FGA	Pct.	FT-FTA	Pct.	Off	Def	Tot	Avg	PF-DQ	A	T	B	S	Pts	Avg
2004-05	22-0	145-6.6	19-45	.422	0-0	.000	7-16	.438	14	22	36	1.6	31-0	3	13	11	3	45	2.0
TOTALS	22-0	145-6.6	19-45	.422	0-0	.000	7-16	.438	14	22	36	1.6	31-0	3	13	11	3	45	2.0



Career Highs

Points

Career 12 at Dayton (12/9/04)

Rebounds

Career ... 5, twice (MR: vs. Neb., 11/14/04)

Assists

Career .. 1, three times (MR: vs. Syracuse, 1/5/05)

Field Goals

Career 6 at Dayton (12/9/04)

Field Goal Attempts

Career 8 at Dayton (12/9/04)

Three-Point Field Goals

Career None

Three-Point Field Goal Attempts

Career None

Free Throws

Career 2 at Northern Illinois (12/30/04)

Free Throw Attempts

Career 4 at Northern Illinois (12/30/04)

Steals

Career .. 1, three times (MR: at Valpo., 11/30/04)

Blocked Shots

Career 3 at Northern Illinois (12/30/04)

Minutes Played

Career 19 at Dayton (12/9/04)

Miscellaneous

Double-doubles 0/0

Double-figure scoring games 1/1

20-point games 0/0

Double-figure rebound games 0/0

5-block games 0/0

(noted in season/career format)

#34 Crystal Erwin

Forward • 6-1 • So.-1V • Rancho Cucamonga, Calif. (St. Paul HS)

2004-05 Highlights

- Chalked up 10 points (5-7 FG) and added career-high six rebounds in season opener vs. Illinois State.
- Grabbed four rebounds and turned momentum in team's favor with physical post play vs. Duke.
- Rang up 12 points on a career-high 6-of-9 shooting in victory over Colorado State.
- Had successful return to home area of southern California with nine points (4-5 FG) in 19 minutes at USC.
- Made first career start at Valparaiso, scoring four points in 13 minutes.
- Erupted for 20 points (9-15 FG) and team-high three steals vs. Michigan State.
- Snared six rebounds in victory at Dayton.
- Set new career high with 24 points (9-9 FG) and added seven rebounds in 34 minutes vs. Washington; her field goal percentage also tied 18-year-old Joyce Center record and matched second-best performance in school history.
- Collected eight rebounds in conference opener vs. Seton Hall.
- Pulled down seven rebounds against Syracuse.
- Scored team-high 11 points (3-6 FG, 5-6 FT) before fouling out in second half against Connecticut.
- Grabbed career-high nine rebounds in victory over Rutgers.
- Registered first career double-double with 14 points and career-high 10 rebounds vs. St. John's.
- One of team's most improved players, nearly doubling her scoring and rebounding averages while making 17 starts.

2004-05 Game-By-Game Statistics

Date	Opponent	Min	FG-FGA	3FG-FGA	FT-FTA	Off	Def	Tot	PF	A	TO	Blk	Stl	Pts
N12	Illinois State	17	5-7	0-0	0-0	1	5	6	5	2	4	1	3	10
N14	Nebraska	11	0-1	0-0	1-2	1	1	2	2	1	3	0	0	1
N17	#6/6 Duke	19	1-5	0-0	0-0	2	2	4	3	1	2	0	0	2
N20	#10/9 Ohio State	13	0-5	0-0	0-0	1	0	1	0	0	0	0	0	0
N22	Colorado State	20	6-9	0-0	0-2	0	2	2	3	1	1	0	0	12
N26	at USC	19	4-5	0-0	1-2	2	1	3	2	0	2	0	0	9
N30	at Valparaiso [^]	13	2-5	0-0	0-0	2	0	2	1	0	0	1	0	4
D2	#15/15 Michigan St. [^]	28	9-15	0-0	2-5	4	1	5	5	0	1	1	3	20
D9	at Dayton [^]	21	0-4	0-0	0-0	0	6	6	4	1	1	1	0	0
D11	Washington [^]	34	9-9	0-0	6-9	4	3	7	3	2	2	0	1	24
D19	at Marquette [^]	26	1-5	0-0	0-0	1	2	3	4	1	0	1	1	2
D30	at Northern Illinois [^]	17	2-6	0-0	2-3	1	2	3	4	2	2	0	2	6
J2	Seton Hall [^]	23	2-7	0-0	2-2	4	4	8	0	1	1	0	1	6
J5	Syracuse [^]	21	1-2	0-0	3-6	0	7	7	2	0	2	1	1	5
J9	at Villanova [^]	9	0-0	0-0	3-4	0	1	1	4	1	1	0	1	3
J12	#16/16 Connecticut [^]	19	3-6	0-0	5-6	4	0	4	5	1	2	1	0	11
J16	#20/20 Purdue [^]	16	2-4	0-0	0-0	1	1	2	3	1	1	0	0	4
J19	at Syracuse [^]	12	0-4	0-0	0-0	2	0	2	2	0	2	0	0	0
J23	#6/7 Rutgers [^]	22	1-5	0-0	2-4	3	6	9	3	2	3	0	0	4
J26	St. John's [^]	25	6-10	0-0	2-9	7	3	10	1	2	2	0	1	14
J30	at #9/10 Connecticut [^]	16	1-4	0-0	0-1	0	1	1	1	0	1	0	0	2
F2	#16/13 BC [^]	12	1-5	0-0	1-2	0	2	2	0	3	3	0	0	3
F5	at Pittsburgh [^]	15	2-8	0-0	4-4	1	5	6	1	0	2	0	1	8
F9	at Providence [*]	16	0-4	0-0	0-0	1	2	3	2	2	0	0	0	0
F12	Georgetown [*]	21	0-3	0-0	2-4	2	3	5	1	0	4	0	1	2
F15	at Boston College [*]													
F19	at Rutgers [*]													
F26	West Virginia [*]													
M2	at Seton Hall [*]													

^{*} - indicates BIG EAST Conference game // [^] - indicates game started

Erwin's Career Statistics

Season	GP-GS	Min.-Avg.	FG-FGA	Pct.	3FG-3FGA	Pct.	FT-FTA	Pct.	Off	Def	Tot	Avg	PF-DQ	A	T	B	S	Pts	Avg
2003-04	32-0	353-11.0	42-94	.447	0-0	.000	22-42	.524	26	41	67	2.1	72-2	15	45	7	23	106	3.3
2004-05	25-17	465-18.6	58-138	.420	0-0	.000	36-65	.554	44	60	104	4.2	61-3	24	42	7	16	152	6.1
TOTALS	57-17	818-14.4	100-232	.431	0-0	.000	58-107	.542	70	101	171	3.0	133-5	39	87	14	39	258	4.5



Career Highs

Points

Career 24 vs. Washington (12/11/04)

Rebounds

Career 10 vs. St. John's (1/26/05)

Assists

Career 3, twice (MR: vs. BC, 2/2/05)

Field Goals

Career 9, twice (MR: vs. Wash., 12/11/04)

Field Goal Attempts

Career 15 vs. Michigan State (12/2/04)

Three-Point Field Goals

Career None

Three-Point Field Goal Attempts

Career None

Free Throws

Career 7 vs. Dayton (12/13/03)

Free Throw Attempts

Career .. 9, twice (MR: vs. St. John's, 1/26/05)

Steals

Career 4 vs. Middle Tenn. (3/23/04)

Blocked Shots

Career 1, 14 times (MR: vs. UConn, 1/12/05)

Minutes Played

Career 34 vs. Washington (12/11/04)

Miscellaneous

Double-doubles 1/1

Double-figure scoring games 6/7

20-point games 2/2

Double-figure rebound games 1/1

5-steal games 0/0

5-assist games 0/0

(noted in season/career format)

#41 Courtney LaVere

Forward • 6-3 • Jr.-2V • Ventura, Calif. (Buena HS)

2004-05 Highlights

- Led six players in double figures with 18 points (8-11 FG) and career-high tying five assists against Illinois State.
- Scored 11 points against Nebraska despite playing just 12 minutes with foul trouble.
- Chalked up first double-double of season (seventh of career) with 13 points and game-high 11 rebounds vs. Duke.
- Had five rebounds and three blocks in Preseason WNIT title game against Ohio State.
- Picked up seven points and six rebounds in win over Colorado State.
- Logged two points and five rebounds before leaving with sprained ankle late in victory at USC.
- Underwent arthroscopic knee surgery Nov. 30 to repair torn meniscus in her left knee (missed five games).
- Returned to action Dec. 30 at Northern Illinois, scoring two points in nine minutes.
- Had six points and three rebounds in 19 minutes off the bench against Seton Hall.
- Contributed eight points and four rebounds vs. Connecticut.
- Posted second double-double of year with 13 points (6-10 FG) and game-high 10 rebounds at Syracuse.
- Scored five of nine points vs. Rutgers in final seven minutes (including go-ahead bucket) during Irish comeback victory.
- Turned in best game since knee surgery with team-high 14 points (6-10 FG) in victory at Connecticut.
- Added seven points and team-high four assists against Boston College.
- Tallied game-high 17 points (7-11 FG) and added eight rebounds in victory at Pittsburgh.
- Returned to starting lineup at Providence, scoring 10 points (5-9 FG) and adding team-high three steals.
- Rounding back into form, averaging 9.5 points with .516 FG% (33-64) in past eight games.

2004-05 Game-By-Game Statistics

Date	Opponent	Min	FG-FGA	3FG-FGA	FT-FTA	Off	Def	Tot	PF	A	TO	Blk	Stl	Pts
N12	Illinois State [^]	28	8-11	0-0	2-5	0	2	2	1	5	1	0	2	18
N14	Nebraska [^]	12	3-4	0-0	5-7	0	2	2	4	2	3	0	0	11
N17	#6/6 Duke [^]	29	5-13	0-0	3-4	2	9	11	0	0	3	1	2	13
N20	#10/9 Ohio State [^]	22	1-7	0-0	1-2	1	4	5	3	1	3	3	0	3
N22	Colorado State [^]	20	3-8	0-1	1-2	3	3	6	2	1	1	2	2	7
N26	at USC [^]	19	1-5	0-0	0-1	1	4	5	3	0	1	1	1	2
N30	at Valparaiso	Did not play - INJ												
D2	#15/15 Michigan St.	Did not play - INJ												
D9	at Dayton	Did not play - INJ												
D11	Washington	Did not play - INJ												
D19	at Marquette	Did not play - INJ												
D30	at Northern Illinois	9	1-2	0-0	0-0	0	1	1	0	0	0	0	1	2
J2	Seton Hall [*]	19	3-4	0-0	0-1	1	2	3	3	2	1	1	0	6
J5	Syracuse [*]	6	0-0	0-0	0-0	0	2	2	0	1	0	0	0	0
J9	at Villanova [*]	18	1-5	0-0	0-0	2	0	2	3	0	2	0	0	2
J12	#16/16 Connecticut [*]	18	4-7	0-0	0-0	2	2	4	2	0	3	1	0	8
J16	#20/20 Purdue	8	2-2	0-0	0-0	0	1	1	2	0	1	0	0	4
J19	at Syracuse [*]	35	6-10	1-1	0-2	2	8	10	3	3	2	1	3	13
J23	#6/7 Rutgers [*]	25	4-8	0-1	1-2	1	4	5	0	2	1	2	0	9
J26	St. John's [*]	12	3-7	0-0	0-0	1	1	2	2	1	3	1	1	6
J30	at #9/10 Connecticut [*]	23	6-10	0-0	2-3	0	2	2	4	1	0	0	1	14
F2	#16/13 BC [*]	24	2-8	0-0	3-4	0	1	1	1	4	3	2	0	7
F5	at Pittsburgh [*]	26	7-11	0-0	3-6	4	4	8	0	0	1	1	2	17
F9	at Providence ^{^*}	23	5-9	0-0	0-0	2	2	4	0	3	3	1	3	10
F12	Georgetown ^{^*}	11	0-1	0-0	0-0	0	1	1	2	1	3	0	0	0
F15	at Boston College [*]													
F19	at Rutgers [*]													
F26	West Virginia [*]													
M2	at Seton Hall [*]													

* - indicates BIG EAST Conference game // ^ - indicates game started

LaVere's Career Statistics

Season	GP-GS	Min.-Avg.	FG-FGA	Pct.	3FG-3FGA	Pct.	FT-FTA	Pct.	Off	Def	Tot	Avg	PF-DQ	A	T	B	S	Pts	Avg
2002-03	32-10	723-22.6	151-311	.486	1-3	.333	95-136	.699	81	99	180	5.6	88-5	21	80	27	19	398	12.4
2003-04	32-17	709-22.2	113-274	.412	3-10	.300	47-85	.553	61	84	145	4.5	87-1	30	75	41	36	276	8.6
2004-05	20-8	387-19.4	65-132	.492	1-3	.333	21-39	.538	22	55	77	3.9	35-0	27	35	17	18	152	7.6
TOTALS	84-35	1819-21.7	329-717	.459	5-16	.313	163-260	.627	164	238	402	4.8	210-6	78	190	85	73	826	9.8



Career Highs

Points

Career ... 23, twice (MR: vs. Rutgers, 1/18/03)

Rebounds

Career 13 vs. SMS (3/21/04)

Assists

Career 5, twice (MR: vs. Ill. St., 11/12/04)

Field Goals

Career 9, three times (MR: vs. Wis., 12/4/03)

Field Goal Attempts

Career ... 16, three times (MR: vs. Wis., 12/4/03)

Three-Point Field Goals

Career 1, five times (MR: at Syr., 1/19/05)

Three-Point Field Goal Attempts

Career 2 vs. Penn State (3/27/04)

Free Throws

Career 12 at Villanova (1/25/03)

Free Throw Attempts

Career 16 at Villanova (1/25/03)

Steals

Career 4 vs. USC (12/22/03)

Blocked Shots

Career 5 at Marquette (12/31/02)

Minutes Played

Career 36 at Marquette (12/31/02)

Miscellaneous

Double-doubles 2/8

Double-figure scoring games 7/41

20-point games 0/6

Double-figure rebound games 2/8

5-block games 0/1

(noted in season/career format)