



BOSTON COLLEGE



Game Information

Date	Sunday, January 14, 2018
Game:	Bosotn College at No. 2 Notre Dame
Tipoff Time	1 p.m.
Location	Purcell Pavilion
LiveStats	umd.com
Livestream	ACCNetworkExtra
Next Game:	Boston College at Clemson
Date:	Thursday, Jan. 18, 2018
Time	7 p.m.

Home Live Stream Team

Play-By-Play:	Eric Gallanty
Color:	Keri Shields

2017-18 Schedule

NOVEMBER

Sun. 3	vs.	Fairfield	Conte Forum	L, 66-58
Sun. 3	vs.	Fairfield	Conte Forum	L, 66-58
Fri. 10	vs.	Bryant	Conte Forum	W, 65-42
Sun. 12	at	Dartmouth	Hanover, N.H.	L, 68-57
Thur. 16	vs.	Fordham	Conte Forum	W, 55-52
Sun. 19	at	Minnesota	Minneapolis, Minn.	L, 78-68
Wed. 22	vs.	Houston	Conte Forum	W, 79-74
Sun. 26	at	Boston University	Boston, Mass.	L, 61-57
Wed. 29	at	Columbia	New York, N.Y.	L, 68-60

DECEMBER

Sun. 3	vs.	Fairfield	Conte Forum	L, 66-58
Wed. 6	at	Holy Cross	Worcester, Mass.	W, 70-61
Sun. 10	vs.	Seton Hall	Conte Forum	L, 73-53
Sun. 17	vs.	New Hampshire	Conte Forum	W, 64-55 (ot)
Thur. 21	at	Providence	Providence, R.I.	L, 63-55
Thur. 28	vs.	Maine	Conte Forum	L, 61-40
Sun. 31	at	Virginia Tech **	Blacksburg, Virginia	L, 89-58

JANUARY

Thur. 4	vs.	North Carolina **	Conte Forum	W, 77-64
Thur. 11	vs.	Virginia **	Conte Forum	L, 68-57
Sun. 14	at	#2 Notre Dame **	Notre Dame, Indiana	1 p.m.
Thur. 18	at	Clemson **	Clemson, S.C.	7 p.m.
Sun. 21	vs.	Miami **	Conte Forum	1 p.m.
Thur. 25	at	Duke **	Durham, N.C.	7 p.m.
Sun. 28	vs.	Syracuse **	Conte Forum	1 p.m.

FEBRUARY

Thur. 1	vs.	Wake Forest **	Conte Forum	7 p.m.
Sun. 4	at	NC State **	Raleigh, N.C.	2 p.m.
Thur. 8	at	Georgie Tech **	Atlanta, Ga.	7 p.m.
Sun. 11	vs.	Pittsburgh **	Conte Forum	1 p.m.
Thur. 15	vs.	Louisville **	Conte Forum	7 p.m.
Sun. 18	vs.	Notre Dame **	Conte Forum	1 p.m.
Thur. 22	at	Florida State **	Tallahassee, Fla.	7 p.m.
Sun. 25	at	Syracuse **	Syracuse, N.Y.	2 p.m.

ACC TOURNAMENT

Greensboro, North Carolina		
Wed. Feb. 28	First Round	TBA
Thur., Mar 1	Second Round	TBA
Fri, Mar 2	Quarterfinals	TBA
Sat., Mar 3	Semifinals	TBA
Sun., Mar 4	Finals	TBA

** ACC Regular Season Games

Boston College (6-10, 1-2) at No. 2 Notre Dame (15-2,4-1)

Sunday, Jan. 14, 2018 • 1 p.m. • ACC Network Extra

Purcell Pavilion • Notre Dame, Indiana

#BCEagles #BCvsND

The Game

The Boston College women's basketball team will head out on a two-game road swing. The Eagles will play at No. 2 Notre Dame on Sunday, Jan. 14 followed by a Thursday road trip to Clemson for a 7 p.m. tip.

Boston College is currently 6-10 overall and 1-2 in the ACC. The Eagles lost to Virginia, 65-57 on Thursday night at Conte Forum. BC was led by rookie Milan Bolden-Morris with 14 points while sophomore Emma Guy pitched in with 12 points and eight rebounds.

Notre Dame (15-2, 4-1) is coming off a tough loss at No. 3 Louisville on Thursday night. The Irish was led by Jackie Young with 23 points and seven boards. Notre Dame had 18 turnovers and shot 44 percent. The Irish could not stop Louisville as the Cardinals shot 65 percent from the floor and hit 11 three's in the win.

The Irish are led by Arike Ogunbowale offensively with a 19.8 points per game and is shooting 44.4 percent from the floor. Jessica Sheppard averages 14.6 points per game while grabbing 7.9 rebounds.

About BC

- Boston College finished the 2016-17 season 9-12. The Eagles were selected to finish last in the ACC Pre-season Coaches poll this season.
- The Eagles return three players who earned starting time last year - sophomore Taylor Ortlepp, sophomore Georgia Pineau and sophomore Emma Guy. All three are expected to play high minutes. Ortlepp has worked on her outside shots, while Pineau can score inside and outside. Guy came into camp as one of the most improved players. A flu-bug has set her progress back a couple of weeks.
- Freshmen guard Sydney Lowery and freshman forward Milan Bolden-Morris are expected to play significant minutes this season. Lowery will play the off-guard position while Bolden-Morris will go from small forward to guard. Lowery is a slasher with a mid-range game while Bolden-Morris had range and loves to drive to the basket.
- Senior Marti Mosetti is expected to be the back-up point and off guard. Mosetti has played both over the past three seasons and is more comfortable in the off-guard position. She has been knocking down mid-range jumpers in practice and will be looked upon for her experience.
- Graduate student Andie Anastos, who played hockey at BC, will provide a defensive stopper and leadership for the Eagles young team. She is expected to play at the point and off-guard spot.
- Senior center Katie Quandt is expected to supply minutes off the bench for Pineau and Guy.

Boston College Starters

#	Pos.	Name	Yr.	Hgt.	Notes
4	G	Taylor Ortlepp	So.	5-9	10 points, 4 rebounds vs. Virginia
2	F	Georgia Pineau	So.	6-1	Averaging 11 points, 7.9 rebs. a game.
11	F	Emma Guy	So.	6-3	12 points, 8 rebounds vs. UVA
23	G	Milan Bolden-Morris	Fr.	5-10	ACC Rookie of the Week, Jan. 8
3	G	Andie Anastos	Gr.	5-8	Career-high 13 points vs. UNC

Boston College Substitutions

#	Pos.	Name	Yr.	Hgt.	Notes
31	G	Sydney Lowery	Fr.	5-10	10 points at Holy Cross
5	G	Rachel Garnter	Sr.	5-8	DNP vs. UVA
21	G	Marti Mosetti	Sr.	5-8	7 pts, 7 rebounds vs. UVA
42	C	Katie Quandt	Sr.	6-3	DNP vs. UVA

Boston College Athletic Communications Services

BOSTON COLLEGE ATHLETIC COMMUNICATIONS

The Boston College Athletic Communications Office is available to assist you with coverage of the BC women's basketball program. The primary media contact for the Boston College women's basketball program is Stephanie Tunnera.

The Athletic Communications Office is located on the second level of Conte Forum. For information regarding credentials, interviews, statistics, press conferences, etc., please call the BC Athletic Communications Office at 617-552-3004 or e-mail Stephanie Tunnera at tunnera@bc.edu.

To assist in your coverage throughout the year, please read the media information on this page. Briefly, all interviews must be arranged through the Communications Office at least one day in advance and all players, coaches and support staff will not take part in an interview unless scheduled by the BC Communications Office.

CREDENTIALS FOR THE 2017-18 SEASON

All requests for working press credentials for 2017-18 Boston College home women's basketball games should be made at least a day prior to each game in question. Please direct all credential inquiries to: Stephanie Tunnera, Assistant Athletics Director-Media Relations, Boston College - email: tunnera@bca.edu or call at (617) 552-0524. Official requests must be on company letterhead. Please include your name, affiliation, address, phone and fax numbers and e-mail address on all requests. All credentials should be picked up at the press will call table outside the first-floor elevator on the south side (Beacon Street) of Conte Forum. No credentials will be mailed. Press parking for women's basketball is located in the Beacon Street garage. There is no parking passes or payment for women's basketball games.

PHOTOGRAPHY

Photo credentials will be issued to accredited photographers, working television media, or others on special assignment. They should be requested in the same manner as press credentials. Photographers will be allowed access to floor-level action, with restriction to the two baselines. Shooting on the sidelines, including from behind or in front of either bench, and behind the scorer's table, is restricted to Boston College affiliated personnel.

MEDIA INTERVIEW POLICIES

All interviews with BC women's basketball players or coaches must be arranged through the media relations office, specifically through Stephanie Tunnera. It is suggested 24 hours notice be given for an interview request. The media relations office will arrange an interview time that is convenient for the player and media representative. Players are not to be called in their dormitory rooms, nor should they be contacted via e-mail. Rather, players will return telephone calls to members of the media. Players will not be asked to miss classroom time or practice time for interviews. Feature-type interviews will not be granted on game day.

PRACTICE

In general, BC practices are open to the media and general public. Any media wishing to attend practice can contact Stephanie Tunnera in the BC media relations office at (617) 552-3004. The general public can go through the women's basketball office for permission. Contact Chris Brann at (617) 552-4530.

POST GAME INTERVIEWS

The Boston College locker room is closed to all members of the media for all games. Head Coach Erik Johnson and requested players will be available for interviews following a 10-minute cooling off period.

After home games, Johnson and players will address the media in the media work room, located on the first floor (north side) of Conte Forum. Johnson and players will enter the media work room upon completion of the visiting team post-game interview.

Media wishing to interview players should notify appropriate members of the BC media relations staff just prior to or at the conclusion of the game. Every effort will be made to bring requested players to the interview area.

PRESS FACILITIES

Boston College's media room is located on the first floor (north side) of Conte Forum. Programs, rosters, statistics and game notes will be available for each game. Play-by-play stats will be delivered to press row and the press room at halftime. Following the post-game press conference in the media room, final box score booklets will be

distributed.

Press row is located courtside on the south side of the basketball floor in Conte Forum. Members of the working media, including writers and radio announcers, will be

WOMEN'S BASKETBALL MEDIA CONTACT

Stephanie Tunnera | tunnera@bc.edu | (O) 617-552-0524 | (C) 857-233-3421

BOSTON COLLEGE COMMUNICATIONS OFFICE

JASON BAUM

Associate AD/Communications / Football Contact
baum@bc.edu | (O) 617-552-0504 | (C) 201-966-6338

STEPHANIE TUNNERA

Assistant AD/Communications /W. Basketball/W. Soccer/W. Golf
Stephanie Tunnera | tunnera@bc.edu | (O) 617-552-0524 | (C) 857-233-3421

MIKE LAPREY

Associate Director/Communications/Men's Basketball/M. Golf/Secondary Football
laprey@bc.edu | (O) 617-552-2193 | (C) 401-929-3747

ZANNA OLLOVE

Associate Director/Communications/Field Hockey/Baseball/Rowing
ollove@bc.edu | (O) 617-552-2004 | (C) 978-828-9221

LIZZ SUMMERS

Associate Director/Communications/Women's Ice Hockey/Website
summerel@bc.edu | (O) 617-552-8841 | (C) 617-571-2219

MARK MAJEWSKI

Assistant Director of Graphic Design/Men's Hockey
majewsm@bc.edu | (O) 617-552-2094 | (C) 734-812-5480

COMMUNICATIONS ASSISTANTS

Emily Iannaconi / Secondary Football/Softball/M&W XCcountry/M&W Track
iannacoe@bc.edu | (O) 617-552-4508 |

Caroline Sobek / Volleyball / Lacrosse / M&W Tennis
sobek@bc.edu | (O) 617-552-1188

Ameen Smith / Video Production
smithbjc@bc.edu | (O) 617-552-3004



@BC_WBB



@BCWBBHoops



BostonCollegeWomensBasketball



@BCAthletics



The Erik Johnson File

Hometown: Wheaton, Illinois
 UC San Diego 1994
Wife: Laura Davis Johnson
Children: Daly, Avery (son, Davis passed in 2010)

Coaching Career

2012-Present		
Head Coach	Boston College	
2008-2012		
Head Coach	Denver	
2005-08		
Assistant Coach	Boston College	
2002-05		
Assoc. Head Coach	San Diego	
1998-02		
Assistant Coach	San Diego	
1995-98		
Assistan Coach	Rhode Island	

Year-By-Year Record

AT BOSTON COLLEGE			
Year	Overall	ACC	
2017-18	6-10	1-2	
2016-17	9-21	2-14	
2015-16	15-16	2-14	
2014-15	13-17	5-11	
2013-14	12-19	3-13	
2012-13	12-19	5-13	
Totals	67-102	18-67	

AT DENVER

2011-12	19-12	11-5	
2011-12	19-12	11-5	
2009-10	18-13	12-6	
2008-09	18-15	10-8	
Totals	72-52	44-24	

OVERALL CAREER RECORD | 139-154

Erik Johnson enters his sixth season as the Head Coach of the women's basketball team at Boston College. Johnson arrived at The Heights following a successful four-year run as head coach at the University of Denver.

This is Johnson's second stint at Boston College. He was an assistant coach with the women's basketball program from 2005-08.

In Johnson's six years at BC, the Eagles are 67-102 overall and 18-67 in the ACC. His overall coaching record is 139-154.

Johnson's 2016-17 finished up the season with a 9-21 record. The Eagles were led by senior guard Kelly Hughes who became the program's all-time leader in three-pointers. Also leading the team was sophomore center Mariella Fasoula. She led the team in points (14.4 ppg.) and rebounds (7.8 rpg.).

In the 2015-16 season, Johnson's team opened the season with a 12-1 run with key wins over Utah and Purdue on the road. The Eagles only loss in that run was to No. 23 ranked Oklahoma at the Junkanoo Jam in the Bahamas. The 2015-16 team finished the season 15-16 and ranked 19th in the country in three-point field goal percentage and 25th in assists per game. The Eagles ranked second in the ACC in three-point field goal percentage, three-point field goal defense, third in scoring defense and fifth in assists.

In Johnson's third season Boston College finished the season at 13-17 overall and 5-11 in the ACC. The Eagles had key wins vs. St. Mary's on the road, along with an upset of then-No. 13 ranked Duke on Jan. 22 at Conte Forum. It marked the first win over a ranked opponent since the 2010 season. It also marked Coach Johnson's second career win over a ranked opponent as his 2011 Denver Pioneer team defeated No. 19 ranked Vanderbilt.

The 2014-15 team set the program record for most three's made in a single season with 250. They finished 11th in the country in three's made and 29th in three-point field goal percentage.

In his second year, Johnson led the Eagles to a 12-19 record. The Eagles posted wins over Providence, FIU and Hartford in non-conference play and ACC victories over Miami, Virginia Tech and Virginia.

Johnson inherited a program that had only won seven games prior to his arrival in 2012-13. In his first season, the Eagles went 12-19 and won five ACC games, including a first round ACC Tournament victory over Virginia.

Under Johnson's guidance, then rookie Nicole Boudreau was named to the All-ACC Rookie team and senior Kerri Shields shot a career-high 40.5 percent from the floor and 38.1 from the three-point line. The team led the ACC and was 44th in the country in free throw percentage. Johnson has produced eight All-Conference/All-Rookie team players while at Boston College and Denver. Ten players have gone on to play professionally while one - Carolyn Swords - plays for the New York Liberty in the

WNBA.

In four years at Denver, Johnson's overall record was 72-52 and went 44-24 in the Sun Belt Conferents. His teams finished second in the Sun Belt four consecutive seasons.

Erik Johnson's Staff

Assoc. Head Coach | Yvonne Hawkins

She enters her sixth season as associate head coach alongside Coach Erik Johnson. Hawkins and Johnson have been a successful coaching combination from the time the two began working together at Boston College in 2006. The duo were assistant coaches at Boston College in 2006. When Johnson was hired as the head coach at Denver, Hawkins joined him as his assistant coach and was later promoted to an associate head coach. The two arrived back at the Heights in the 2012-13 season. A native of Ohio, Hawkins is the Eagles recruiting coordinator and responsible for coaching the post players on the BC roster.

ASSISTANT COACH | TOM GARRICK

Garrick, a native of Rhode Island, enters his third season as an assistant coach at BC. He arrived in June of 2015 after serving as an assistant coach and then associate head coach for the Vanderbilt women's basketball team. Garrick arrived at Vanderbilt as an assistant coach in 2009. He was then promoted to associate head coach in 2013. He worked with the team guards and helped in the development of Commodores then-rookie Rebeka Dahlman's emergence as one of the top players in the SEC. Garrick played at URI and professionally for several NBA teams.

Assistant Coach | Latara King

King is in her first season as an assistant at BC. Prior to BC, she was an assistant at Monmouth. While at Monmouth, King served as recruiting coordinator, worked with the guards and was the director of the Monmouth Women's Basketball Camps and Clinics. Prior to Monmouth, King was a GA for Florida State women's basketball. Prior to FSU, King was an assistant coach at Florida Memorial University. She handled recruiting, scheduling and the development of guards.

Director of Ops | Chris Brann

Brann enters his sixth season with the BC women's basketball program. This is Brann's second stint at The Heights as he worked in the same position for two seasons with former head coach Cathy Inglesse and one season with Sylvia Crawley's staff. Prior to returning to Boston College, Brann worked for one year as the Director of Basketball Operations for head coach Katie Meier and the Miami women's program. He held a similar position from 2010-2012 working alongside Erik Johnson and the Pioneer program. Brann, a native of Jacksonville, Florida, is responsible for team travel, non-conference scheduling, the Fast Break Club, budget management, film exchange and supervising the team managers as well as serving as the point person for the Boston College Basketball Summer Camps.

GAME 17: BOSTON COLLEGE AT NOTRE DAME | JAN. 14, 2018



HEAD COACH
ERIK JOHNSON
6th Season at BC



ASSOC. HEAD COACH
YVONNE HAWKINS
6th Season at BC



ASSISTANT COACH
TOM GARRICK
3rd season at BC



ASSISTANT COACH
LATARA KING
1st season at BC



DIR. OF OPERATIONS
CHRIS BRANN
6th Season at BC



STEPHANIE JONES
GUARD | SHELTON, CONN.



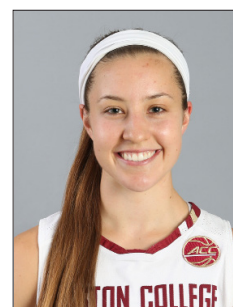
GEORGIA PINEAU
FOR. | VICTORIA, AUSTRALIA



ANDIE ANASTOS
GUARD | FARMINGTON HILLS
MICHIGAN



TAYLOR ORTLEPP
GUARD | ADELAIDE, AUSTRALIA



RACHEL GARTNER
GUARD | DANBURY, CONN.



EMMA GUY
FORWARD | PENFIELD, N.Y.



JASMINE TAYLOR
FORWARD | SPRINGFIELD, VA



MARTI MOSETTI
GUARD | TRIESTE, ITALY



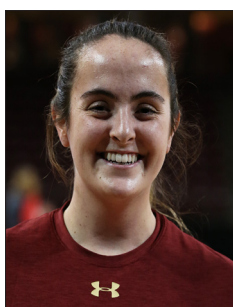
MILAN BOLDEN-MORRIS
FORWARD | BELLE GLADE, FLA



SYDNEY LOWERY
GUARD | SHELTON, CONN.



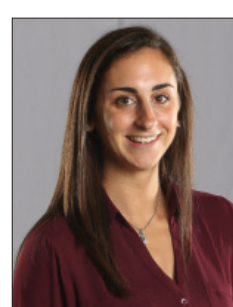
KATIE QUANDT
CENTER | LAKEVILLE, MINN.



ISABELLE ROBINSON
FORWARD | DIGHTON, MASS.



MIA NICKSON
1st YEAR GRADUATE ASSISTANT



LAUREN BATTISTA
2nd YEAR GRADUATE ASSISTANT



JOCELYN FISHER GATES
SR. ASSOC. AD/SWA

Roster Breakdown

PRONUNCIATION GUIDE

Georgia PIN-EAU	PIN-O
Taylor ORTLEPP	ORT-LEP
Emma GUY	Like Why - GUY
Andie ANASTOS	AN-AS-TOS
Sydney LOWERY	LAU-ER

By Heights

6-4	Katie Quandt
6-3	Emma Guy
6-1	Georgia Pineau
6-0	Jasmine Taylor
6-0	Isabelle Robinson
5-10	Sydney Lowery
5-10	Milan Bolden-Morris
5-9	Taylor Ortlepp
5-8	Rachel Gartner
5-8	Andie Anastos
5-8	Marti Mosetti
5-7	Stephanie Jones

By Position

Center	Katie Quandt
Forwards	Emma Guy, Georgia Pineau Isabelle Robinson Jasmine Taylor
Guard/Forward	Milan Bolden-Morris
Guards	Sydney Lowery, Steph Jones Taylor Ortlepp, Rachel Gartner Andie Anastos, Marti Mosetti

2017-18 BC Roster

No.	Name	Cl.	Pos.	Ht.	Hometown/High School/Previous School
1	Stephanie Jones	Jr.	G	5-7	Shelton, Conn. / Loomis Chaffee School
2	Georgia Pineau	So.	F	6-1	Victoria, Australia / Caulfield Grammar
3	Andie Anastos	Gr.	G	5-8	Farmington Hills, Mich./Livonia Ladywood
4	Taylor Ortlepp	So.	G	5-9	Adelaide, Australia / St. Ignatius College
5	Rachel Gartner	Sr.	G	5-8	Danbury, Conn. / Danbury High
11	Emma Guy	So.	F	6-3	Penfield, N.Y. / Penfield
20	Jasmine Taylor	So.	G/F	6-0	Springfield, Virginia / Bishop O'Connell
21	Martina Mosetti	Sr.	G	5-8	Trieste, Italy / Niccolo Tron
23	Milan Bolden-Morris	Fr.	G	5-10	Belle Glade, Florida / Cardinal Newman
25	Isabelle Robinson	So.	F	6-0	Dighton, Mass. / Moses Brown
31	Sydney Lowery	Fr.	G	5-10	Shelton, Conn. / St. Luke's School
42	Katie Quandt	Sr.	C/F	6-3	Lakeville, Minn. / Lakeville South

HEAD WOMEN'S BASKETBALL COACH

Erik Johnson (U. of Cal., San Diego '94)

Career Record: 139-154

Record at BC: 67-102

ASSOCIATE HEAD COACH

Yvonne Hawksin (Ashland '82)

ASSISTANT COACHES

Tom Garrick (URI '89)

Latara King (Florida Memorial Univ. '10)

DIRECTOR BASKETBALL OPERATIONS

Christopher Brann (Florida State '01)

VIDEO ANALYST

Marcus Shelmidine (Syracuse '16)

ATHLETIC TRAINER

Kristen Allen (Purdue '95)

STRENGTH COACH

Meghan Tierney (UConn '09)

SENIOR ASSOC. AD & SWA

Jocelyn Fisher Gates (Howard University)

Team Captains

- Senior **Rachel Gartner** and graduate student **Andie Anastos** will serve as the team captains for the 2017-18 season.
- Gartner joined the Eagles in the 2014-15 season and played nine games before suffering a season-ending injury. Gartner, a native of Danbury, Conn., has a sister who played Division I soccer.
- Anastos joined the team in May 2017 after enjoying a successful four-year career with the BC women's hockey program. A native of Farmington Hills, Michigan, Anastos is working on her master's degree from the Wood School of Advancing Studies.

From Down Under

- Sophomores **Taylor Ortlepp** and **Georgia Pineau** hail from Australia. Prior to BC, the tandem played together in the NWSL in Australia.
- Pineau committed to BC first and Ortlepp followed in February.
- Pineau played for the Victoria State team which won the National Championship in 2011, 2012, 2014 and 2015. Her brother Dane played at St. Mary's in California and currently plays for the Sydney Kings in the NBL.
- Pineau played in all 30 games and started 23 games. She averaged 7.5 points, 5.4 rebounds and had 8.3 assists as a freshman.
- Ortlepp played for the Norwood Flames in the So. Australian Premier League. She was also a member of the Australia Junior team in 2014 which placed fifth in the FIBA World U-17 Championships.
- Ortlepp missed seven games last season. Her first game was against Fordham on Dec. 4. She started the last 12 games and finished the season averaging 7.3 points, 2.0 rebounds and 2.6 assists per game.

Marti's World

- Senior guard **Marti Mosetti** has an inquiring mind. Since her arrival in the states in 2014, Mosetti has always asked questions to learn more about Boston College, the United States, ACC basketball and made a huge effort to improve her English.
- This past summer, Mosetti took advantage of her summer going into her senior season. The native of Trieste, Italy, volunteered in the marketing department at BC and worked at Below Zero - a startup company in Cambridge.
- Mosetti will be relied on this season for her leadership and experience for a young team.
- The 5-foot-9 guard shot a career-high 70 percent from the foul line and was second on the team in assists (68).

Walk On

- Isabelle Robinson joined the Eagles in November as a walk on. Robinson is a sophomore and transferred to Boston College from NYU.
- Known as Izzy, Robinson was a men's basketball manager.
- She played her high school ball at Moses Brown in Providence, Rhode Island.

RECORD BREAKDOWN

	2017
Home	5-4
Away	1-6
Neutral	0-0
Conference	1-2
Non-Conference	1-5
vs. Ranked Opponent	0-0

November	3-4
December	2-5
January	1-1
White Uniforms	5-4
Maroon Uniforms	0-4
Grey Uniforms	1-2

Game Decided by 1-4 points	1-1
Game Decided by 5-10 points	3-4
Game Decided by 11-20 points	1-3
Game Decided by 20-25 points	1-2
Game Decided by 30+ points	0-1
Overtime	1-0

PLAYER CAREER TOTALS

	GP/GS	PTS	ASTS	RBS
A. ANASTOS	13/12	74	46	41
K. QUANDT	98/25	383	31	241
M. MOSETTI	103/63	386	279	218
R. GARTNER	40/1	36	32	21
S. JONES	45/0	59	44	22
E. GUY	39/22	248	28	178
T. ORTLEPP	37/26	326	91	83
G. PINEAU	43/35	371	125	269
J. TAYLOR	10/0	7	5	7
M. B-MORRIS	15/13	200	15	74
S. LOWERY	15/10	113	12	46
I. ROBINSON	0/0	0	0	0

New York's Finest

• Sophomore Emma Guy came to preseason ready to step up. A native of Penfield, New York impressed a number of her teammates and administrators in the first two weeks of practice.

• The 6-foot-3 forward suffered a setback when the flu knocked her out. She missed a month of practice and the first four games of the season. Guy missed two games in December with an upper body injury.

The Rookies

• The young sophomore class will be supported by two rookies - Milan Bolden-Morris and Sydney Lowery. Bolden-Morris, a native of Belle Glade, Florida, is a scorer as she notched over 2,000 points in high school. She can drive to the hoop as well as hit the long-range shots.

• Lowery, a native of Shelton, Conn., is a 5-10 slasher. She scored over 2,000 points in high school and can hit the long-range as well as the mid-range jumper.

Ice to Court

• Former women's hockey player Andie Anastos has made a seamless transition to basketball here at The Heights.

• The graduate student from Michigan starred at BC for four seasons and was a two-time team captain. Anastos joined the team in the summer.

• The Eagles guard is scored her first career point in the third quarter against Dartmouth. She also hit her first career three-point in the fourth quarter of the game and finished with seven points and five rebounds. She is averaging 29 minutes per game.

• A team captain, Anastos did not play against Fairfield and Holy Cross due to an upper body injury. She returned to the lineup against Seton Hall and had a team high five assists.

Class of 2018

• Boston College will add six new players to the roster in 2018-19 after they all signed an NLI on Wed., Nov. 8.

• **Jenasae Bishop | 5-6 | Guard | Hammond, Indiana**
Bishop averaged 24.4 points, four assists and 6.6 rebounds as a junior ... Broke the E. Chicago Central High girl's scoring record with 1,763 career points ... 2018 Miss Basketball and Indiana All-Star candidate.

• **Clara Ford | 6-3 | Forward | Vienna, Virginia**
Ford averaged 19.6 points and 11 rebounds as a junior ... Named to the Capital Conference All-Star first team in 2016-17 ... MVP at George C. Marshall H.S. in 2016-17.

• **Marnella Garraud | 5-7 | Guard | Lynn, Mass.**
Averaged 13 points, four steals and five assists at Noble & Greenough last year ... Class AAA Champions ... New England Tournament Class AA MVP ... Played her first two seasons at St. Mary's.

• **Kate Klimkiewicz | 6-0 | Guard | Fairfax, Virginia**
Plays for Paul VI Catholic School which was third overall in the country in the final USA Today Poll ... A 1,000 point scorer ... Went 32-2 last year ... Washington Catholic Conference third-team selection.

• **Taylor Soule | 5-11 | Forward | W. Lebanon, N.H.**
Attends Kimball Union Academy ... Averaged 18 points, 11 rebounds and seven assists for the WBB team last year ... Scored her 1,000 point in Feb. 2017 ... Also a member of the soccer team.

• **Lana Hollingsworth | 5-10 | F | Brighton E., Australia**

Played at Haileybury Girls College, was the team MVP in 2016 & 2017 ... Member of the Frankston Blues in the U-18 Victorie Junior League ... Played for the Victorian State team in 2015 & 2017 that won the bronze medal.

A Look Ahead

• Boston College will hit the road to play old Big East rival - No. 2 Notre Dame. It will be the first nationally ranked team BC has played thus far in 2017-18. The two teams are schedule to play the second game of the season at Boston College on Sunday, Feb. 18 at 1 p.m. The Eagles will celebrate Senior Day on that Sunday.

• The Eagles will stay on the road and play at Clemson on Thursday at 7 p.m.

BC vs. Notre Dame

- Boston College is 5-20 against Notre Dame all-time
- BC lost twice vs. Notre Dame last season. The two teams have played twice every season - 2014, 2015 and 2016 - in ACC action.

- Since joining the ACC, Boston College has won once since 2005.

- BC and Notre Dame first met in 1983. The Eagles won, 59-55.

Last Three Games

- Boston College is 1-2 in the last three games. The lone win was at home vs. UNC. BC lost at Virginia Tech on Dec. 31 (89-53) and Virginia (68-57) at home.

- BC is shooting 44.7 percent from the floor in the three-game run while opponents are shooting 45.2 percent.

- BC is has been out-rebounded 26.7-36.7 in the three games.

- The Eagles average 64.0 points per game while opponents average 73.7 points per games.

- In ACC action and the last three games, freshman Milan Bolden-Morris leads the Eagles offensively with a 16.3 points per game average and is shooting 45.8 percent from the three-point line.

- Sophomore Taylor Ortlepp is shooting 45.5 percent from the floor and averaging 13.7 points and 2.1 assists in the three-game run.

Let's Start Here

- Boston College has had nine different starting line-ups this season due to injuries or illness.
- Sophomore guard **Taylor Ortlepp** has started 15- of 16 games, while **Milan Bolden-Morris** and **Georgia Pineau** have 14 starts.
- Rookie **Sydney Lowery** started the first 10 games.
- Graduate senior **Andie Anastos** has started 13 of 14 games. She missed two games due to an injury.
- Four players - **Milan Bolden-Morris**, **Taylor Ortlepp**, **Sydney Lowery** and **Katei Quandt** - have played in every game this season.

Eaglet

- Rookie **Milan Bolden-Morris** has scored in double-figures in the 12-of-16 games this season. Her season high is 18 which she posted in the win over UNH and again vs. North Carolina.
- Bolden-Morris leads the Eagles in three-point field goals with 47 three's made. She is fourth overall in three's made by a BC freshman, tied with Mandy West '95-96. The rookie record is 74, which is held by Kelly Hughes '13-14.
- She has led the Eagles in scoring six times this season, including four of the last six games.
- Bolden-Morris was named ACC Rookie of the Week on Dec. 26 after she averaged 17 points and shot over 50 percent from the floor. She picked up the honor again this past week after scoring 18 points and hitting four three's in the win over North Carolina.

Youth Movement

- Boston College has three seniors and one graduate senior on the roster. Of that group - Andie Anastos starts are the point while senior guard Marti Mosetti is the first off the bench. Neither is in the top five of the Eagles scoring leaders.
- Of the five starters, three are sophomores (Emma Guy, Georgia Pineau & Taylor Ortlepp and one rookie (Milan Bolden-Morris).
- The Eagles offense is led by the young guns as the top five scorers are either a freshman or sophomore

 Freshman Bolden-Morris 13.4 ppg.
 Sophomore Taylor Ortlepp 11.0
 Sophomore Georgia Pineau 11.0 ppg.
 Sophomore Emma Guy -- 9.0 ppg.
 Freshman Syd Lowery -- 7.3 ppg.

- In the 16 games, a rookie has led the team in scoring in seven games and a sophomore has led the team in six games.

Free Throws

- Sophomore **Emma Guy** has two double-doubles this season. She notched her first against Fairfield (12 pts-11 rebounds) and again vs. Maine (12 points, 13 rebounds).
- Freshman **Sydney Lowery** was name Eagle of the Week on Nov. 28 with her two-game effort against Houston and BU. She is the only player on the roster to have started every game this season.
- Sophomore **Taylor Ortlepp** scored a team-high 18 points against Fairfield. She went 3-for-5 from beyond the arc. Ortlepp has led the team in scoring vs. Houston (BU) and Fairfield. The Eagle guard went 8-for-8

- from the foul line against Holy Cross to seal the win. Earlier in the season, she went 10-for-10 from the charity stripe against Houston.
 - Sophomore **Georgia Pineau** had five blocks in the loss to Fairfield. She is the first players since former BC forward Karima Gabriel did it against FSU on Feb. 22, 2015. Pineau has notched double-figures in rebounds in three games - Holy Cross, BU and Dartmouth. Pineau has led BC in scoring four times and on the boards in seven games. She has notched double digits in rebounding in five games this season.
 - Senior **Marti Mosetti** has played in a team-high 104 career games. She has 64 starts, including 31 in her sophomore season. Mosetti also has 281 career assists, good enough for 14th overall - behind **Cal Bouchard** '00 with 284.
- Alumni News**
- **Danielle O'Banion** graduated from BC in 2001. The Eagles guard is now an Associate Head Coach for the Memphis Women's Basketball team.
 - Former Eagles forward **Katie Zenevitch** '14 is a kindergarten teacher in Lawrence.
 - Former Eagles forward **Aja Parham** '05 is the founder of SportsMindset in Brisbane, Australia.
 - **Brittany Johnson** '07 is the head coach at Evanston

- Township High School in Illinois. She is a 2010 graduate of Boston College.
- Former Eagles guard **Victoria Jones** '07 owns her own company - MakeTheMerge - go to makethemerge.com and check out her apparel.
- **Stephanie Murphy** '12 is an assistant coach with the Vermont Women's Basketball Program.
- Meanwhile former Eagle sharpshooter **Kindyll Dorsey** '06 is an assistant coach alongside former BC assistant and now head coach Kelly Cole at Northeastern.
- **Kristn Doherty** '14 is now the head coach at her alma mater - Sachem East in New York.
- Former Eagles head coach **Cathy Inglese** is now an assistant coach at Fairleigh Dickinson in New Jersey. The Knights are currently 7-2. This is her first season working alongside Mass. native Pete Cinella.
- **Carolyn Swords** is currently in Poland playing for Gorzow Wlkp. Swords is averaging 16.8 points, 9.3 rebounds and 1.4 assists a game. She is shooting 66.4percent from the floor and 82.7 percent from the foul line.

GAME-BY-GAME STARTERS

Opponent	PG	G	F	F	G
vs. Bryant	Ortlepp	Anastos	Pineau	Bolden-Morris	Lowery
at Dartmouth	Ortlepp	Anastos	Pineau	Bolden-Morris	Lowery
vs. Fordham	Ortlepp	Anastos	Pineau	Bolden-Morris	Lowery
at Minnesota	Ortlepp	Anastos	Quandt	Bolden-Morris	Lowery
vs. Houston	Ortlepp	Anastos	Guy	Bolden-Morris	Lowery
at BU	Anastos	Bolden-Morris	Guy	Pineau	Lowery
at Columbia	Ortlepp	Anastos	Guy	Pineau	Lowery
vs. Fairfield	Ortlepp	Bolden-Morris	Guy	Pineau	Lowery
at Holy Cross	Ortlepp	Bolden-Morris	Guy	Pineau	Lowery
vs. Seton Hall	Ortlepp	Bolden-Morris	Guy	Pineau	Lowery
vs. UNH	Ortlepp	Anastos	Quandt	Pineau	Mosetti
at Providence	Ortlepp	Anastos	Bolden-Morris	Pineau	Mosetti
vs. Maine	Ortlepp	Anastos	Guy	Pineau	Bolden-Morris
at Virginia Tech	Ortlepp	Anastos	Guy	Pineau	Bolden-Morris
vs. North Carolina	Ortlepp	Anastos	Guy	Pineau	Bolden-Morris
vs. Virginia	Ortlepp	Anastos	Guy	Pineau	Bolden-Morris
at Notre Dame					

No. 31, SYDNEY LOWERY

5-10, Freshman, Guard, Shelton, Conn.

- Scored 19 at Minnesota on Nov. 19, 2017
- Had 18 points at BU on Nov. 26, 2017.

LOWERY'S CAREER HIGHS

Points: -- 19 at Minn. 11.19.17

FG Made: --7 at BU, 11.26.17

FG Att.: -- 16 vs. Houston, 11.22.17

FT Made: -- 9 at Minnesota, 11.19.17

FT Attempted: -- 11 at Minnesota, 11.19.17

Assists: -- 2, 2x most recent vs. Houston, 11.22.17

Rebounds: - 6 3x, most recent vs. Fairfield, 12.3.17

Steals: -- 2 3x, at BU, 11.26.17

Minutes: -- 38 vs. Houston, 11.22.17

No. 4, TAYLOR ORTLEPP

5-9, So. Guard, Adalaide, Australia

- Went 10-for-10 from the foul line vs. Houston.
- Notched her career-high 23 points vs. UNC on 12.5.18.

ORTLEPP'S CAREER HIGHS

Points: 23 vs. UNC, 12.5.18

FG Made: 8 vs. UNC, 12.5.18

FG Att.: 15, 2x, most recent vs. Houston, 11.22.17

FT Made: 10 vs. Houston, 11.22.17

FT Attempted: 10 vs. Houston, 11.22.17

3PT FG Made: 5, 2x, vs. UNC, 12.5.18 & 2.9.17

3PT FG ATT: 9 vs. UNH, 12.17.17

Assists: 7 at Holy Cross, 12.6.17

Rebounds: 5, 3x, most recent at Holy Cross, 12.6.17

Steals: 3, 2x, most recent at Holy Cross, 12.6.17

Minutes: 42 vs. UNH, 12.17.17

No. 2, GEORGIA PINEAU

6-1, So. Forward, Victoria, Australia

- She has 3 double-doubles this season - at Dartmouth with 12 points, 11 rebounds (12.12.17); at Holy Cross (19,12 on 12.6.17) and vs. UNH (10,12 on 12.17.17).

PINEAU'S CAREER HIGHS

Points: 22 at Columbia, 11.29.17

FG Made: 8 3x, most recent vs. Seton Hall, 12.10.17

FG Att.: 15 at Dartmouth, 11.12.17

FT Made: 6 at Columbia, 11.29.17

FT Attempted: 11 at Columbia, 11.29.17

3PT FG Made: 1, 3x, most recent vs. Prov. 12.10.16

3PT FG ATT: 4, at Hartford, 11.11.16

Assists: 8 at Seton Hall, 11.17.16

Rebounds: 12 2x most recent vs. UNH, 12.17.17

Steals: 2, 7x, most recent vs. Maine, 12.28.17

Blocks: 5 vs. Fairfield, 12.3.17

Minutes: 38 vs. UNC, 1.5.18 & Fairfield, 12.3.17

No. 21 MARTI MOSETTI

5-8, Senior, Guard, Trieste, Italy

- Has a team-high 103 career games played with 62 starts, 31 as a sophomore.

MOSETTI'S CAREER HIGHS

Points: 14 vs. UNH, 12.17.17; vs. Clemson, 2.5.15

FG Made: 6, vs. Clemson, 2.5.15

FG Att.: 12 vs. Yale, 1.10.16

FT Made: 4, vs. UNH, 12.17.17; vs. Dartmouth, 12.21.16

FT Attempted: 8 vs. Dartmouth, 12.21.16

3PT FG Made: 2, 3x most recent vs. UVA, 1.11.18

Assists: 8 at Northeastern, 12.28.15

Rebounds: 7 2x, most recent vs. UVA, 1.11.18

Steals: 4 vs. NC State, 2.16.15

Minutes: 36 vs. Pittsburgh, 1.21.16

No. 11, EMMA GUY

6-3, So. Forward, Penfield, New York

- Missed 6 games this season due to illness or injury

GUY'S CAREER HIGHS

Points: 14, vs. Notre Dame, 1.19.17

FG Made: 6, vs. Notre Dame, 1.19.17

FG Att.: 10, 2x, most recently vs. Columba, 11.29.17

FT Made: 8, at Pittsburgh, 1.5.17

FT Attempted: 9, at Pittsburgh, 1.5.17

Assists: 5, at Hartford, 11.11.16

Rebounds: 13 vs. Maine, 12.28.17

Steals: 2, 4x, most recent vs. G-Tech, 3.1.17

Minutes: 33, vs. Boston University, 11.14.16

No. 23, MILAN BOLDEN-MORRIS

5-10, Freshman, G/F, Belle Glade, Florida

- Season-high 18 points vs. UNC, 1.5.18 & UNH, 12.17.17
- Has scored in double-figures in seven games.

BOLDEN-MORRIS' CAREER HIGHS

Points: -- 18, vs. UNC, 1.5.18 & UNH, 12.17.17

FG Made: -- 7 vs. Houston, 11.22.17

FG Att.: -- 16, at BU, 11.26.17

FT Made: -- 2, 5x most recent vs. at VTech, 12.31.17

FT Attempted: -- 4, at Holy Cross, 12.6.17

3PT FG Made: -- 4, 7x, most recent vs. UVA, 1.11.18

3 PT FG ATT: -- 10, 2x, most recent vs. UVA, 1.11.18

Assists: -- 3 vs. Fordham, 11.16.17

Rebounds: -- 9, 2x most recent Houston, 11.22.17

Steals: -- 3 vs. Bryant, 11.10.17

Minutes: -- 39 vs. Fairfield, 12.3.17

No. 3, ANDIE ANASTOS

5-9, Graduate, Guard, Farmington Hills, Michigan

- Scored her first career point at Dartmouth, finished with 7 points, including her first career three-pointer.
- Scored career-high 13 points vs. UNC, 1.5.18

ANASTOS CAREER HIGHS

Points: 13 vs. UNC, 1.5.18

FG ATT: 11 vs. UNC, 1.5.18

FG MADE: 4 2x, most recent vs. UNC, 1.5.18

3PTM: 2 2x, vs. UNC, 1.5.18 & at Minnesota, 11.19.17

3PTA: 3 vs. UNC, 1.5.18

Assists: 7 at Minnesota, 11.19.17

Rebounds: 8 vs. Houston, 11.22.17

Steals: 4 at BU, 11.26.17

Minutes: 35 4x, most recent vs. Prov. 12.21.17

No. 42 KATIE QUANDT

6-3, Senior, Center, Lakeville, Minnesota

- Had 9 points, 7 rebounds vs. Seton Hall - it's her season-high for the 2017-18 season.
- Has played in 93 career games with 24 starts.
- In three seasons, averages 4.0 points, 2.3 rebounds and shoots 50 percent from the floor.

QUANDT'S CAREER HIGHS

Points: 16 vs Bryant, 11.23.14

FG Made: 6, vs Bryant, 11.23.14

FG Att.: 9, 2x, most recent at Prov. 11.13.15

FT Made: 4, vs Bryant, 11.23.14, vs. Notre Dame, 2.8.15

FT Attempted: 7, vs. Notre Dame, 2.8.15

Rebounds: 7, 3x, most recent vs. Seton Hall, 12.10.17

Steals: 2 vs. Bryant, 12.30.15

Minutes: 31, vs Clemson, 2.5.15

No. 5 RACHEL GARTNER

5-8, Senior, Guard, Danbury, Conn.

- Team captain along with GR. SR. Andie Anastos.
- Has played in 36 career games and has one start.
- Played a season-high 19 minutes vs. Minnesota.

GARTNER'S CAREER HIGHS

Points: 6 vs. Providence, 12.28.14

Rebounds: 4 vs. Holy Cross, 12.6.17

Assists: 9, at Hartford, 12.7.14

Steals: 2 at Hartford, 12.7.14

Minutes: 28, at Hartford, 12.7.14

No. 25 ISABELLE ROBINSON

6-0, Sophomore, Forward, Dighton, Mass..

- Joined in the team in November, 2017.

ROBINSON'S CAREER HIGHS

Points: -----

Rebounds: -----

Assists: -----

Steals: -----

Minutes: -----

Individual Players

Scored 20+ points in a game	23, Taylor Ortlepp, vs. UNC, 1.5.18 22, Georgia Pineau, L at Columbia, 11.29.17 24, Kelly Hughes, W at UNC, 2.9.17
Scored 30+ points in a game	32, Kelly Hughes, at Wake Forest, 2.8.15 30, Stefanie Murphy, FSU, 1.27.11
Scored 35+ points in a game	39, Sarah Behn, G-Town, 1.13.93
Made 8+ 3's in a game	8, Nicole Boudreau, vs. UNC, 2.7.16 8, Kerri Shields, St. Joe's, 3.19.11
Made 5-7 3's in a game	5-7, Taylor Ortlepp, 1.5.18 7-10, Kelly Hughes, at UNC, 2.9.17 5-8, Taylor Ortlepp, at UNC, 2.9.17
10+ rebounds in a game	12, Georgia Pineau, vs. UNH, 12.17.17 12, Georgia Pineau, at Holy Cross, 12.3.17 10, Emma Guy, at Holy Cross, 12.3.17
15+ rebounds in a game	16, K. Zenevitch, vs. Mt. St. Mary's, 1.1.14
20+ rebounds in a game	21, Carolyn Swords, NC State, 1.29.09
Double-Double	10-12 vs. UNH - Georgia Pineau, 12.17.17 18-12, Georgia Pineau, at Holy Cross, 12.3.17
100% from FT line (5 or more)	8-8, Taylor Ortlepp, at Holy Cross, 12.3.17 10-10 Taylor Ortlepp, vs. Houston 11.22.17
10+ assists	10, Jaclyn Thoman, Rutgers, 12.12.10
6-9 assists	6, Georgia Pineau, vs. UNC, 1.5.18 6, Andie Anastos, at VTech, 12.31.17 7, Marti Mosetti, Providence, 12.21.17
5+ Steals	5, Karima Gabriel, vs. FSU, 2.22.15 5, Nicole Boudreau, vs. Prov. 12.28.14
5+ Blocks	5, Georgia Pineau, vs. Fairfield, 12.3.17 5, Karima Gabriel, vs. FSU, 2.22.15 6, Carolyn Swords, FSU, 3.5.10

* Program record

Team

Won in OT	64-55, OT vs. UNH, 12.17.17 64-59 OT, W vs. NC State, 2.16.15
Lost in OT	L, 69-64 (ot) at Maine, 11.30.14
Played 2 OT's	L, 92-87 vs. WF, 1.20.13
Defeated To 10 (AP) Opp	67-60, vs. No. 8 FSU, 3.5.10
Def. Ranked AP Opp (Reg)	60-56, W vs. No. 13/15 Duke, 1.22.15
Won by 20-30 points	66-46 W vs. CCSU, 12.18.16
Won by 20-30 (ACC) opp.	73-50, Virginia, 2.20.11
Won by 30+ points	62-28, vs. Hartford, 12.9.15
Lost by 20+ points	25 pts at Louisville, 2.12.17
Lost by 30 + points	89-58 at VTech, 12.31.17 85-53 L vs. #5/6 FSU, 2.2.17
Scored 100 points	113-104 vs. Penn St. 12.2.10
Scored 90 points	90-80 W vs. Brown, 11.28.14
Scored 75+ points	77-64, W vs. UNC, 1.5.18 78-74 W vs. Houston, 11.22.17
Allowed 80+ points	89 at VTech, 12.31.17 85-53 L vs. #5/6 FSU, 2.2.217
Scored fewer than 50 pts.	40 L vs Maine, 12.28.17
Scored less than 10 in a quarter	6 pts, vs. Maine, 12.28.17 (3Q) 6 pts, vs. Prov. 12.21.17 (3Q)
Scored under 20 in a half	19 at Dartmouth, (1st half) 11.12.17 16 at Louisville (1st half), 2.12.17
Opp. scored fewer than 20 in half	19 (1st half) at Dartmouth, 11.12.17
Opp. scored fewer than 10 pts in Q	8 vs. Maine, 12.28.17 8 vs. UNH (1Q) 12.17.17 8 vs. Fordham (3Q), 11.16.17 6 vs. Bryant, (4tQ) 11.10.17
Allowed fewer than 40 pts.	49-37, vs. VTech, 3.3.16
Allowed 100+ pt	104-58, L at #4/4 Notre Dame, 1.11.15
Shot over 70% from floor	76.2% W vs. Syracuse, 1.9.1989 *
Shot over 60% from floor	60.3 W, vs. Yale, 3.17.11
Shot 50% or better	50% L vs. ND, 1.19.17
Shot under 35% from floor	29.6% vs. Maine, 12.28.17
Held Opp. under 35%	30% W vs. UNH, 12.17.17

Did not make a 3-pointer	0-12 at Wake Forest, 2.26.17
Made 6-10 3's in a game	9 vs. UVA, 1.11.18 6 at Providence, 12.21.17
Made 11+ 3's in a game	11 vs. UNC, 1.5.18
Att. 11-19 3's in a game	13 vs. VTech, 1.31.17
Att. 21+ 3's in a game	27 vs. Virginia, 1.11.18 21 vs. UNC, 1.5.18
Att. 30+ free throws in game	31, W at Hofstra, 11.12.13
Made 25 free throws in game	28, W vs. UMass, 12.7.11
Made 15-24 free throws in game	10-17 W vs. UNH, 12.17.17 21-24 W vs. Houston, 11.22.17
100% at free throw line (5 or more)	10-for-10 L, at BU, 11.26.17 11-for-11 W vs. Holy Cross, 12.21.13
Grabbed 50 rebounds	51, L vs. Fairfield, 12.3.17
Had 40-50 rebounds	40 W vs. UNH, 12.17.17 47 W vs. Houston, 11.22.17
Had 30-39 rebounds	35, L vs. Maine, 12.28.17 30 L at Columbia, 11.29.17
Under 25 rebounds	24 L at VTech, 12.31.17 21 L at Duke, 1.17.16
21+ assists	22 W vs. CCSU, 12.18.16 21 W vs. St. Francis, 11.26.16
16-20 assists	17 at Minnesota, 11.19.17
5+ steals	6 vs. Virginia, 1.11.18 5 L, at VTech, 12.31.17
10+ steals	10 L at BU, 11.26.17 10 W vs. Bryant, 11.10.17 14 L at Miami, 2.19.17 10 L vs. Duke, 1.22.17
5+ Blocked Shots	6, L vs. Fairfield, 12.3.17 5 L vs. Cuse, 2.5.17 5 L at Miami, 1.29.17
+10 Turnovers	15 L, vs. Virginia, 1.11.18 11 W vs. UNC, 1.5.18
+20 Turnovers	20 L at VTech, 12.31.17



Game-By-Game Recaps

Game 1 vs. Bryant - November 10, 2017

The Boston College defeated Bryant, 65-42 in the season opener at home. The Eagles pulled away in the second quarter as they out-scored Bryant, 15-8. Boston College proceeded to apply pressure in the final quarter as the defense held Bryant to just six points. Four players finished in double-figures for the Eagles Georgia Pineau had 15 points, Milan Bolden-Morris pitched in with 11 points, nine rebounds, while rookie Sydney Lowery had 13 points and six rebounds. Senior Marti Mosetti had 13 points with three rebounds and one steal. Boston College shot 41 percent from the floor and scored 17 points off turnovers in the win. finished in double-figures for the Eagles

Game 2 at Dartmouth - Nov. 12, 2017

Boston College lost to Dartmouth, 68-57, despite a double-double from sophomore Georgia Pineau (14 points, 10 rebounds). The Eagles mounted a late comeback behind freshman Milan Bolden-Morris' 13 fourth quarter points and five from graduate senior Andie Anastos. BC was down at the half, 32-19. The Eagles were outscored, 19-11 in the third quarter but then scored 27 points in the final quarter. BC won the battle of the boards, 41-34 but had 14 turnovers. Bolden-Morris finished with 16 points, while Taylor Ortlepp added 11.

Game 3 vs. Fordham - Nov. 16, 2017

Freshman Milan Bolden-Morris hit four three-pointers on her way to a team-high 16 points as Boston College defeated Fordham, 55-52, at Conte Forum on Field Trip Day as over, 2563 fans cheered on the Eagles in a non-conference game. Boston College improved to 2-1, while Fordham is now 1-1. Bolden-Morris hit her fourth three-pointer with 3:23 to play which extended the Eagles lead to 12 points. BC held on the final three minutes behind three foul shots by Martina Mosetti, who finished with 11 points and five rebounds.

Game 4 at Minnesota - Nov. 19, 2017

The Boston College women's basketball fought hard but fell to Minnesota, 78-68, at Williams Arena in a non-conference battle. The Eagles cut the lead 10 points three times in the second half playing with five players with three or more fouls. Minnesota held a lead of 20-point lead in the third quarter but the Eagles never stopped fighting as freshman Sydney Lowery scored 15 of her season-high 19 points in the second half. Boston College shot 42.6 percent from the floor and 47.6 percent from the three-point line but lost the game on the boards. Minnesota out-rebounded BC, 54-30, with 22 offensive rebounds.

Game 5 vs. Houston - Nov. 22, 2017

The Boston College bounced back from the loss at Minnesota with a home win over Houston, 78-74. The Eagles went on a 10-0 run in the final minutes to seal the win. Freshman Sydney Lowery hit a three-point followed by a mid-range jumper by rookie Sydney Lowery in the spurt. Sophomore Taylor Ortlepp finished with a career-high 21 points in the win. She hit 10-for-10 from the foul line in the win.

Game 5 vs. Houston - Nov. 22, 2017

The Boston College bounced back from the loss at Minnesota with a home win over Houston, 78-74. The Eagles went on a 10-0 run in the final minutes to seal the win. Freshman Sydney Lowery hit a three-point followed by a mid-range jumper by rookie Sydney Lowery in the spurt. Sophomore Taylor Ortlepp finished with a career-high 21 points in the win. She hit 10-for-10 from the foul line in the win.

Game 6 at Boston University - Nov. 26, 2017

The Boston College fell on the road at Boston University, 61-57, despite 18 points from freshman Sydney Lowery. BC shot just 26 percent in the first quarter and held a one-point lead, 13-12. At the half, BC held a 28-27 as the Eagles hit 6-15 from the outside. BU outscored BC 14-8 in the third to pull away. BC shot just 25 percent in the quarter and went 0-3 from the three-point line. The Eagles did not hit a three-pointer until the three minute mark of the fourth quarter. A offensive flurry in the final two minutes fell short as a three-pointer by Lowery was negated on a call that she stepped out of bounds. BC is now 3-3 on the season.

Game 7 at Columbia - Nov. 29, 2017

The Boston College women's basketball team fell on the road at Columbia, 68-60, despite 22 points from sophomore forward Georgia Pineau. The Eagles are now 3-4 on the season while the Lions improved to 3-5. The Eagles shot 44.4 percent from the floor but 44.6 percent (10-for-21) from the charity stripe. Columbia shot 43.3 percent from the floor but out-rebounded BC, 43-30, and hit a seven three-pointers, all at key points in the game.

Game 8 vs. Fairfield - Dec. 3, 2017

The Boston College women's basketball team lost its third consecutive game to Fairfield, 66-58, at home in Conte Forum. Despite a double-double from sophomore Emma Guy (12 points, 11 rebounds) and 18 points from sophomore Taylor Ortlepp, BC turned the ball over 20 times which turned into 24 Stags points. BC held the lead at the half, 26-25, on a long three by Milan Bolden-Morris (16 points). The Stags out-scored the Eagles, 41-32 in the second half to earn the win.

Game 9 at Holy Cross - Dec. 6, 2017

The Boston College women's basketball team defeated the Holy Cross Crusaders, 70-61, on Wednesday night at the Hart Center behind sophomore Georgia Pineau's 19 point-12 rebound effort. The Eagles are now 4-5 on the season, while the Crusaders fell to 3-5. Boston College and the Crusaders were tied 25-25 at the end of the half. The Eagles took the lead for good at the start of the third quarter when they went on a 16-8 run. Pineau had six points in the run while Milan Bolden Morris pitched in with five. BC outscored Holy Cross 23-17 in the period and shot 66.7 percent from the floor to pull ahead to a 48-42 lead. BC shot 48.9 percent from the floor while Holy Cross shot 33.3 percent. The Eagles out-rebounded the Crusaders 43-31 in the victory.

Game 10 vs Seton Hall - Dec. 10, 2017

The Boston College women's basketball team fell, 73-53, to Seton Hall on Sunday afternoon in Conte Forum despite sophomore Georgia Pineau's 18-point, eight-rebound effort. The Eagles are now 4-6 on the season, while the Pirates advanced to 7-2. Boston College concluded the first quarter only three points down, but their efforts at redemption were squandered from there on out. Though the Eagles brought the Pirates' lead within eight points after a three from Andie Anastos, Seton Hall took charge and sustained a double-digit lead for the remainder of the game. BC shot 31.3 percent from the floor while Seton Hall shot 46.8 percent. The Eagles excelled in free throws, connecting 75 percent.

Game 11 vs UNH - Dec. 17, 2017

The Boston College women's basketball team defeated UNH, 64-55, in overtime on Sunday afternoon at Conte Forum behind 18 points from freshman Milan Bolden-Morris, including four three-pointers in the fourth quarter. Boston College took a 14-8 lead in the first quarter behind five points from sophomore Taylor Ortlepp. UNH would outshoot the Eagles 21-6 in the second quarter to claim a nine point lead heading into the half. Senior Martina Mosetti led the Eagles with nine points in the third to pull BC within seven. Bolden-Morris was a perfect four-for-four from behind the arc in the fourth quarter, helping to give the Eagles a 50-48 lead with 3:24 left in the game. UNH tied the score at 52-52 with 29 seconds left, forcing overtime. The Eagles outshot the Wildcats 12-3 to defeat the Wildcats. BC is now 5-6 on the season, while the Wildcats fell to 7-4. BC shot 47 percent from the floor while UNH shot 30 percent.

Game 12 at Providence - Dec. 21, 2017

Though leading going into half time, Boston College women's basketball was bested by Providence College's 21 points in the third quarter alone, falling to Providence at Alumni Hall, 63-55. The Eagles outperformed the Friars in the first quarter, holding the Friars to a six-minute scoring drought and taking an 8-0 to nab the lead. BC finished the first half on top, leading by a narrow five-point margin. In the second half, the Friars took off quickly, scoring 21 points in the third quarter alone and the Eagles could not answer, though they brought Providence's lead within four in the final minutes. The Eagles fell to 5-7 on the season, while the Friars improved to 7-6. Providence out-shot the Eagles with 47.8 percent from the floor to the Eagles' 41.7 percent.

Game 13 vs. Maine - Dec. 28, 2017

It was clear that the Christmas break did not help the Boston College. The Eagles fell at home, 61-40, in the first game back from break. BC's one highlight was sophomore Emma Guy posted her second double-double (12 points, 13 rebounds) upon her return to the lineup. The Eagles shot 29.6 percent from the floor for the game and scored just six points in the second quarter followed by nine in the third quarter.

Game-By-Game Recaps**Game 14 at Virginia Tech - Dec. 31, 2017**

BLACKSBURG, Virginia - The Boston College women's basketball team fell, 89-58, despite 17 points from freshman Milan Bolden-Morris and 14 from sophomore Emma Guy on Sunday afternoon. Boston College is now 5-9 and 0-1 in the ACC. Virginia Tech improved to 12-3 overall and 1-1 in the conference. The Eagles shot 44.2 percent from the floor but was out-rebounded, 38-24 by Virginia Tech and the Hokies hit 21-for-24 free throws in the game. The Hokies shot 50 percent from the floor and 87.5 percent from the floor. Virginia Tech also had nine steals and scored 27 points off the Eagles turnovers.

Game 15 vs. North Carolina - Jan. 5, 2018

The Boston College women's basketball team came out victorious over North Carolina, 77-64, for its first ACC win on the season in Chestnut Hill Friday afternoon. Though down coming out of the first quarter, the Eagles found two encouraging runs in the second frame to outscore the Tar Heels by eight points, capturing the lead going into half time. BC found its first double-digit lead after Taylor Ortlepp sank a three and rode it into the fourth. After adding another 22 points in the last frame, the Eagles came out on top. The Eagles shot 47 percent from the floor and hit 52 percent of trey attempts, while North Carolina only mustered 36 percent of connected field goals.

Game 16 vs. Virginia - Jan. 11, 2018

CHESTNUT HILL, Mass. - The Boston College women's basketball team fell to ACC rival Virginia, 68-57, in Chestnut Hill on Thursday evening. BC (6-10, 1-2) had the score close at the conclusion of the first quarter as the Eagles only trailed by four. Virginia pulled ahead in the second quarter though behind an 18-3 run. BC pulled to within 10 in the third quarter and again in the fourth behind four three-pointers but were unable to secure the victory, despite outscoring the Cavaliers 36-30 in the second half. Virginia won the battle of the boards, 35-24. The Eagles shot 41 percent from the floor and hit 67 percent of free throws, while Virginia shot 50 percent from the floor and 75 percent from behind the arc to remain undefeated in ACC play.



THE STAT CREW SYSTEM
Boston College Combined Team Statistics (as of Jan 11, 2018)
All games

RECORD:	OVERALL	HOME	AWAY	NEUTRAL
ALL GAMES	6-10	5-4	1-6	0-0
CONFERENCE	1-2	1-1	0-1	0-0
NON-CONFERENCE	5-8	4-3	1-5	0-0

##	Player	gp-gs	min	avg	Total		3-Point		F-Throw		Rebounds				pf	dq	a	to	blk	stl	pts	avg
					fg-fga	fg%	3fg-fga	3fg%	ft-fta	ft%	off	def	tot	avg								
23	Milan Bolden-Morris	16-14	546	34.1	77-180	.428	47-117	.402	13-23	.565	13	62	75	4.7	29	0	17	34	0	12	214	13.4
04	Taylor Ortlepp	16-15	508	31.8	56-164	.341	26-86	.302	38-47	.809	4	35	39	2.4	26	0	38	30	1	19	176	11.0
02	Georgia Pineau	14-14	463	33.1	63-134	.470	1-5	.200	27-43	.628	28	82	110	7.9	52	3	44	46	19	9	154	11.0
11	Emma Guy	10-10	200	20.0	40-73	.548	0-0	.000	10-18	.556	20	48	68	6.8	31	1	4	22	7	4	90	9.0
31	Sydney Lowery	16-10	420	26.3	38-137	.277	7-42	.167	34-49	.694	6	40	46	2.9	26	0	13	19	0	9	117	7.3
21	Martina Mosetti	13-2	342	26.3	29-71	.408	7-22	.318	20-29	.690	9	39	48	3.7	36	0	26	31	2	8	85	6.5
03	Andie Anastos	14-13	445	31.8	28-57	.491	7-11	.636	14-25	.560	8	34	42	3.0	31	1	48	31	1	15	77	5.5
42	Katie Quandt	15-2	196	13.1	22-52	.423	0-0	.000	3-4	.750	14	35	49	3.3	23	0	5	25	11	3	47	3.1
05	Rachel Gartner	11-0	105	9.5	6-18	.333	0-7	.000	1-3	.333	2	10	12	1.1	14	0	4	12	0	3	13	1.2
Team											40	41	81				6					
Total.....		16	3225		359-886	.405	95-290	.328	160-241	.664	144	426	570	35.6	268	5	199	256	41	82	973	60.8
Opponents.....		16	3225		382-963	.397	96-297	.323	183-265	.691	188	422	610	38.1	273	4	197	215	52	105	1043	65.2

TEAM STATISTICS	BC	OPP	Date	Opponent	Score	Att.
SCORING	973	1043	11/10/17	BRYANT	w 65-42	748
Points per game	60.8	65.2	11/12/17	at Dartmouth	L 57-68	0
Scoring margin	-4.4	-	11.16.17	FORDHAM	w 55-52	2563
FIELD GOALS-ATT	359-886	382-963	11/19/17	at Minnesota	L 68-78	2454
Field goal pct	.405	.397	11/22/17	HOUSTON	w 79-74	891
3 POINT FG-ATT	95-290	96-297	11/26/17	at Boston University	L 57-61	335
3-point FG pct	.328	.323	11/29/17	at Columbia	L 60-68	2372
3-pt FG made per game	5.9	6.0	12/3/17	FAIRFIELD	L 58-66	893
FREE THROWS-ATT	160-241	183-265	12/06/17	at Holy Cross	w 70-61	987
Free throw pct	.664	.691	12/10/17	SETON HALL	L 53-73	1249
F-Throws made per game	10.0	11.4	12/17/17	UNH	Wot 64-55	1041
REBOUNDS	570	610	12/21/17	at Providence	L 55-63	424
Rebounds per game	35.6	38.1	12/28/17	MAINE	L 40-61	1337
Rebounding margin	-2.5	-	* 12/31/17	at Virginia Tech	L 58-89	2349
ASSISTS	199	197	* 1/5/18	NC	w 77-64	747
Assists per game	12.4	12.3	* 1/11/18	VA	L 57-68	1065
TURNOVERS	256	215				
Turnovers per game	16.0	13.4				
Turnover margin	-2.6	-				
Assist/turnover ratio	0.8	0.9				
STEALS	82	105				
Steals per game	5.1	6.6				
BLOCKS	41	52				
Blocks per game	2.6	3.3				
ATTENDANCE	10534	8921				
Home games-Avg/Game	9-1170	7-1274				
Neutral site-Avg/Game	-	0-0				

Score by Periods	1st	2nd	3rd	4th	OT	Totals
Boston College	210	207	230	314	12	973
Opponents	217	248	286	289	3	1043

THE STAT CREW SYSTEM
Boston College Combined Team Statistics (as of Jan 11, 2018)
ACC games only

RECORD:	OVERALL	HOME	AWAY	NEUTRAL
ALL GAMES	1-2	1-1	0-1	0-0
CONFERENCE	1-2	1-1	0-1	0-0
NON-CONFERENCE	0-0	0-0	0-0	0-0

##	Player	gp-gs	min	avg	Total		3-Point		F-Throw		Rebounds				pf	dq	a	to	blk	stl	pts	avg
					fg-fga	fg%	3fg-fga	3fg%	ft-fta	ft%	off	def	tot	avg								
23	Milan Bolden-Morris	3-3	102	34.0	17-34	.500	11-24	.458	4-6	.667	2	6	8	2.7	7	0	5	4	0	2	49	16.3
04	Taylor Ortlepp	3-3	97	32.3	15-33	.455	8-18	.444	3-4	.750	0	8	8	2.7	6	0	7	4	0	3	41	13.7
02	Georgia Pineau	3-3	96	32.0	14-31	.452	0-3	.000	2-4	.500	4	7	11	3.7	7	0	13	12	3	2	30	10.0
11	Emma Guy	3-3	67	22.3	10-20	.500	0-0	.000	6-8	.750	3	13	16	5.3	8	0	0	4	3	3	26	8.7
03	Andie Anastos	3-3	81	27.0	6-13	.462	3-4	.750	3-4	.750	2	2	4	1.3	9	0	10	7	0	2	18	6.0
21	Martina Mosetti	3-0	85	28.3	5-12	.417	2-8	.250	5-7	.714	4	10	14	4.7	9	0	6	7	0	1	17	5.7
31	Sydney Lowery	3-0	51	17.0	3-14	.214	0-4	.000	3-5	.600	0	6	6	2.0	2	0	3	2	0	0	9	3.0
42	Katie Quandt	2-0	15	7.5	1-1	1.000	0-0	.000	0-1	.000	0	1	1	0.5	3	0	1	3	1	1	2	1.0
05	Rachel Gartner	1-0	6	6.0	0-1	.000	0-0	.000	0-0	.000	0	0	0	0.0	2	0	0	1	0	0	0	0.0
Team											5	7	12				2					
Total.....		3	600		71-159	.447	24-61	.393	26-39	.667	20	60	80	26.7	53	0	45	46	7	14	192	64.0
Opponents.....		3	600		80-177	.452	17-51	.333	44-54	.815	36	74	110	36.7	54	1	43	38	9	17	221	73.7

TEAM STATISTICS	BC	OPP	Date	Opponent	Score	Att.
SCORING	192	221	* 12/31/17	at Virginia Tech	L 58-89	2349
Points per game	64.0	73.7	* 1/5/18	NC	w 77-64	747
Scoring margin	-9.7	-	* 1/11/18	VA	L 57-68	1065
FIELD GOALS-ATT	71-159	80-177	* - ACC game			
Field goal pct	.447	.452				
3 POINT FG-ATT	24-61	17-51				
3-point FG pct	.393	.333				
3-pt FG made per game	8.0	5.7				
FREE THROWS-ATT	26-39	44-54				
Free throw pct	.667	.815				
F-Throws made per game	8.7	14.7				
REBOUNDS	80	110				
Rebounds per game	26.7	36.7				
Rebounding margin	-10.0	-				
ASSISTS	45	43				
Assists per game	15.0	14.3				
TURNOVERS	46	38				
Turnovers per game	15.3	12.7				
Turnover margin	-2.7	-				
Assist/turnover ratio	1.0	1.1				
STEALS	14	17				
Steals per game	4.7	5.7				
BLOCKS	7	9				
Blocks per game	2.3	3.0				
ATTENDANCE	1812	2349				
Home games-Avg/Game	2-906	1-2349				
Neutral site-Avg/Game	-	0-0				

Score by Periods	1st	2nd	3rd	4th	Totals
Boston College	36	44	56	56	192
Opponents	47	56	58	60	221

THE STAT CREW SYSTEM
Boston College Team Game-by-Game Comparison (as of Jan 11, 2018)
All games

Opponent	1st	2nd	Score	Mar	Total FG	FG Pct	3-Pointers	3FG Pct	Free Throws	FT Pct	Rebounds	Assist	T/Over	Block	Steal	Fouls
BRYANT	35/21	30/21	65-42	+23	25-60/18-51	.417/.353	6-22/1-11	.273/.091	9-15/5-9	.600/.556	39/33 +6	9/9	11/19	4/6	10/2	8/17
Dartmouth	19/32	38/36	57-68	(11)	23-65/25-52	.354/.481	5-24/9-19	.208/.474	6-12/9-12	.500/.750	41/34 +7	7/12	14/14	1/2	4/4	14/11
FORDHAM	26/23	29/29	55-52	+3	22-45/19-59	.489/.322	6-11/2-15	.545/.133	5-9/12-14	.556/.857	32/34 (2)	13/6	17/11	1/1	5/6	18/14
Minnesota	29/43	39/35	68-78	(10)	23-54/26-71	.426/.366	10-21/7-26	.476/.269	12-18/19-26	.667/.731	30/54 (24)	17/13	14/10	2/1	4/8	19/18
HOUSTON	32/26	47/48	79-74	+5	25-61/28-75	.410/.373	8-18/7-18	.444/.389	21-24/11-16	.875/.688	47/40 +7	13/6	22/16	3/1	2/9	13/27
Boston University	28/27	29/34	57-61	(4)	22-65/21-54	.338/.389	3-21/8-19	.143/.421	10-10/11-19	1000/.579	32/45 (13)	13/10	12/21	0/11	10/6	18/15
Columbia	29/27	31/41	60-68	(8)	24-54/26-60	.444/.433	2-13/7-23	.154/.304	10-21/9-13	.476/.692	30/43 (13)	7/17	13/16	4/3	6/4	18/18
FAIRFIELD	26/25	32/41	58-66	(8)	21-58/24-64	.362/.375	7-16/10-28	.438/.357	9-13/8-12	.692/.667	51/31 +20	11/18	20/6	6/5	1/9	17/14
Holy Cross	25/25	45/36	70-61	+9	23-47/22-66	.489/.333	5-12/6-24	.417/.250	19-30/11-18	.633/.611	43/31 +12	17/11	18/11	2/1	5/10	19/23
SETON HALL	22/34	31/39	53-73	(20)	21-67/29-62	.313/.468	2-22/7-17	.091/.412	9-12/8-13	.750/.615	41/42 (1)	13/16	14/14	5/9	5/8	12/17
UNH	20/29	32/23	64-55	+9	23-49/21-70	.469/.300	8-20/4-14	.400/.286	10-17/9-13	.588/.692	40/40 -	14/11	17/11	3/1	5/3	19/15
Providence	26/21	29/42	55-63	(8)	20-48/22-46	.417/.478	6-17/5-13	.353/.385	9-12/14-24	.750/.583	29/30 (1)	14/12	17/14	1/1	5/5	22/12
MAINE	20/29	20/32	40-61	(21)	16-54/21-56	.296/.375	3-12/6-19	.250/.316	5-9/13-22	.556/.591	35/43 (8)	6/13	21/14	2/1	6/14	18/18
Virginia Tech	27/37	31/52	58-89	(31)	23-52/30-60	.442/.500	4-13/8-22	.308/.364	8-14/21-24	.571/.875	24/38 (14)	15/18	20/11	3/3	5/9	17/18
NC	32/28	45/36	77-64	+13	28-59/22-61	.475/.361	11-21/3-15	.524/.200	10-13/17-22	.769/.773	32/37 (5)	17/10	11/11	3/4	3/5	23/20
VA	21/38	36/30	57-68	(11)	20-48/28-56	.417/.500	9-27/6-14	.333/.429	8-12/6-8	.667/.750	24/35 (11)	13/15	15/16	1/2	6/3	13/16

Note: Game totals are displayed in the format TEAM/OPPONENT for each category

THE STAT CREW SYSTEM
Boston College Points-Rebounds-Assists (as of Jan 13, 2018)
All games

Opponent	Date	Score		02	03	04	05	11	21	23
				PINEAU,GEO	ANASTOS,AN	ORTLEPP,TA	GARTNER,RA	GUY,EMMA	MOSETTI,MA	BOLDEN-MOR
BRYANT	11/10/17	65-42	w	15-8-1	0-2-2	9-4-3	2-0-0	DNP	13-3-1	11-9-1
at Dartmouth	11/12/17	57-68	L	12-11-1	7-5-1	11-5-1	DNP	DNP	4-7-3	16-2-0
FORDHAM	11.16.17	55-52	w	4-10-5	6-2-4	8-2-0	DNP	DNP	11-5-0	16-3-3
at Minnesota	11/19/17	68-78	L	DNP	9-5-7	10-0-3	2-3-1	DNP	10-2-1	14-4-2
HOUSTON	11/22/17	79-74	w	DNP	5-8-5	21-4-1	0-0-0	5-3-0	9-6-3	16-9-2
at Boston University	11/26/17	57-61	L	4-11-4	7-1-3	7-3-1	DNP	10-2-0	0-0-2	9-6-1
at Columbia	11/29/17	60-68	L	22-4-1	8-5-1	0-2-3	0-0-0	11-7-0	2-2-1	5-3-1
FAIRFIELD	12/3/17	58-66	L	5-9-4	DNP	18-2-3	2-2-0	12-11-2	DNP	16-7-2
at Holy Cross	12/06/17	70-61	w	19-12-6	DNP	14-5-7	0-4-0	8-10-2	DNP	15-6-0
SETON HALL	12/10/17	53-73	L	18-8-3	7-0-5	6-1-4	2-1-1	6-6-0	DNP	5-2-0
UNH	12/17/17	64-55	w	10-12-3	2-3-3	15-2-5	3-0-1	DNP	14-4-2	18-8-0
at Providence	12/21/17	55-63	L	9-9-2	3-6-3	12-0-0	0-1-0	DNP	5-2-7	16-5-0
MAINE	12/28/17	40-61	L	6-5-1	5-1-4	4-1-0	2-1-1	12-13-0	0-3-0	8-3-0
at Virginia Tech	12/31/17	58-89	L	8-3-5	2-1-6	8-3-0	0-0-0	14-8-0	2-1-1	17-1-2
NC	1/5/18	77-64	w	15-5-6	13-2-2	23-4-3	DNP	0-0-0	8-6-3	18-6-1
VA	1/11/18	57-68	L	7-3-2	3-1-2	10-1-4	DNP	12-8-0	7-7-2	14-1-2

Opponent	Date	Score		31	42
				LOWERY,SYD	QUANDT,KAT
BRYANT	11/10/17	65-42	w	13-6-1	2-2-0
at Dartmouth	11/12/17	57-68	L	5-1-1	2-3-0
FORDHAM	11.16.17	55-52	w	10-5-1	0-3-0
at Minnesota	11/19/17	68-78	L	19-4-2	4-8-1
HOUSTON	11/22/17	79-74	w	15-6-2	8-6-0
at Boston University	11/26/17	57-61	L	18-2-1	2-0-1
at Columbia	11/29/17	60-68	L	8-3-0	4-1-0
FAIRFIELD	12/3/17	58-66	L	1-6-0	4-7-0
at Holy Cross	12/06/17	70-61	w	10-0-1	4-3-1
SETON HALL	12/10/17	53-73	L	0-1-0	9-7-0
UNH	12/17/17	64-55	w	0-2-0	2-4-0
at Providence	12/21/17	55-63	L	6-1-1	4-2-1
MAINE	12/28/17	40-61	L	3-3-0	0-2-0
at Virginia Tech	12/31/17	58-89	L	5-3-1	2-0-0
NC	1/5/18	77-64	w	0-3-1	0-1-1
VA	1/11/18	57-68	L	4-0-1	DNP

THE STAT CREW SYSTEM
Boston College Game-by-Game Highs (as of Jan 13, 2018)
All games

Opponent	Date	Score	Points	Rebounds	Assists	Steals	Blocked shots
BRYANT	11/10/17	65-42	15-Georgia Pineau	9-Milan Bolden-Morris	3-Taylor Ortlepp	3-Milan Bolden-Morris	2-Katie Quandt Georgia Pineau
at Dartmouth	11/12/17	57-68	16-Milan Bolden-Morri	11-Georgia Pineau	3-Martina Mosetti	2-Milan Bolden-Morris	1-Martina Mosetti
FORDHAM	11.16.17	55-52	16-Milan Bolden-Morri	10-Georgia Pineau	5-Georgia Pineau	2-Taylor Ortlepp	1-Georgia Pineau
at Minnesota	11/19/17	68-78	19-Sydney Lowery	8-Katie Quandt	7-Andie Anastos	2-Sydney Lowery	1-Martina Mosetti Andie Anastos
HOUSTON	11/22/17	79-74	21-Taylor Ortlepp	9-Milan Bolden-Morris	5-Andie Anastos	1-Milan Bolden-Morris Andie Anastos	2-Emma Guy
at Boston University	11/26/17	57-61	18-Sydney Lowery	11-Georgia Pineau	4-Georgia Pineau	4-Andie Anastos	None
at Columbia	11/29/17	60-68	22-Georgia Pineau	7-Emma Guy	3-Taylor Ortlepp	2-Georgia Pineau	3-Georgia Pineau
FAIRFIELD	12/3/17	58-66	18-Taylor Ortlepp	11-Emma Guy	4-Georgia Pineau	1-Taylor Ortlepp	5-Georgia Pineau
at Holy Cross	12/06/17	70-61	19-Georgia Pineau	12-Georgia Pineau	7-Taylor Ortlepp	3-Taylor Ortlepp	1-Georgia Pineau Katie Quandt
SETON HALL	12/10/17	53-73	18-Georgia Pineau	8-Georgia Pineau	5-Andie Anastos	2-Milan Bolden-Morris Taylor Ortlepp	3-Katie Quandt
UNH	12/17/17	64-55	18-Milan Bolden-Morri	12-Georgia Pineau	5-Taylor Ortlepp	2-Taylor Ortlepp	2-Katie Quandt
at Providence	12/21/17	55-63	16-Milan Bolden-Morri	9-Georgia Pineau	7-Martina Mosetti	2-Taylor Ortlepp Martina Mosetti	1-Georgia Pineau
MAINE	12/28/17	40-61	12-Emma Guy	13-Emma Guy	4-Andie Anastos	3-Andie Anastos	1-Katie Quandt Emma Guy
at Virginia Tech	12/31/17	58-89	17-Milan Bolden-Morri	8-Emma Guy	6-Andie Anastos	2-Emma Guy	2-Emma Guy
NC	1/5/18	77-64	23-Taylor Ortlepp	6-Milan Bolden-Morris Martina Mosetti	6-Georgia Pineau	1-Milan Bolden-Morris Katie Quandt Andie Anastos	1-Georgia Pineau Emma Guy Katie Quandt
VA	1/11/18	57-68	14-Milan Bolden-Morri	8-Emma Guy	4-Taylor Ortlepp	2-Georgia Pineau Taylor Ortlepp	1-Georgia Pineau