



NOTRE DAME

Women's Basketball 2010-11

2001 NCAA Champions • 1997 NCAA Final Four
8 NCAA Sweet 16 Berths • 17 NCAA Tourney Appearances

2010-11 ND Women's Basketball: WBCA Classic

#18/16 Notre Dame Fighting Irish (2-2 / 0-0 BIG EAST)

- ◆ **DATE:** Nov. 26-28, 2010
- ◆ **AT:** Notre Dame, Ind.
Purcell Pavilion at the Joyce Center (9,149)
- ◆ **LIVE STATS:** [UND.com](#)
- ◆ **LIVE VIDEO:** [UND.com](#)
- ◆ **TWITTER:** [@ndwbsids@UND.com](#)
- ◆ **RADIO:** Pulse FM (96.9/92.1)
Bob Nagle, p-b-p

- ◆ **SCHEDULE:** *Friday, Nov. 26 (2:00 / 4:00)*
Notre Dame vs. IUPUI
Butler vs. Wake Forest
- Saturday, Nov. 27 (2:00 / 4:00)*
Notre Dame vs. Wake Forest
Butler vs. IUPUI
- Sunday, Nov. 29 (Noon / 2:00)*
IUPUI vs. Wake Forest
Notre Dame vs. Butler



2010-11 Schedule

2-2 / 0-0 BIG EAST

N3	(12/12) Michigan Tech (exhib.)	W, 102-30
N12	(12/12) New Hampshire	W, 99-48
N15	(12/12) Morehead State	W, 91-28
N18	(12/12) UCLA (15/15)	L, 83-86 ^{2OT}
N21	(12/12) @ Kentucky (9/10) ^{FSS}	L, 76-81
N26	(18/16) IUPUI¹	2:00 ET
N27	(18/16) Wake Forest¹	2:00 ET
N28	(18/16) Butler¹	2:00 ET
D1	@ Baylor	8:00 ET
D5	Purdue ^{ESPN2}	2:00 ET
D8	• @ Providence	7:00 ET
D11	Creighton	2:00 ET
D20	@ Valparaiso	8:05 ET
D29	vs. Gonzaga ²	7:30 ET
D30	vs. Loyola Marymount ²	7:30 ET
J2	Southeast Missouri State	2:00 ET
J5	• @ Marquette	8:00 ET
J8	• Connecticut ^{CBS}	2:00 ET
J12	• Louisville	7:00 ET
J15	• @ Pittsburgh	2:00 ET
J18	• Georgetown ^{CBS C}	7:00 ET
J23	• St. John's ^{ESPN}	2:00 ET
J29	• @ Villanova	7:00 ET
F1	• Syracuse	7:00 ET
F5	• @ South Florida	7:00 ET
F8	• Seton Hall	7:00 ET
F12	• Rutgers	2:00 ET
F19	• @ Connecticut ^{BETV}	2:00 ET
F22	• @ West Virginia ^{CBS C}	7:00 ET
F26	• Cincinnati	2:00 ET
F28	• @ DePaul ^{CBS C}	9:00 ET
M4	BIG EAST 1st Round ³	TBA
M5	BIG EAST 2nd Round ^{3-BETV}	TBA
M6	BIG EAST Quarterfinal ^{3-ESPN}	TBA
M7	BIG EAST Semifinal ^{3-ESPN}	6/8:00 ET
M8	BIG EAST Final ^{3-ESPN}	7:00 ET
M19-22	NCAA 1st-2nd Rounds ^{4-ESPN/ESPN2}	TBA
M26-29	NCAA Regionals ^{5-ESPN}	TBA
A3	NCAA National Semifinals ^{6-ESPN}	TBA
A5	NCAA Championship Game ^{6-ESPN}	TBA

Storylines

- ◆ The Fighting Irish return home to host their first regular-season scheduled tournament in 27 years when Purcell Pavilion serves as the locale for the 2010 Women's Basketball Coaches Association (WBCA) Classic.
- ◆ Wake Forest and Butler will play the day's first game at noon (ET), with all four teams competing in a round-robin format through Sunday afternoon.
- ◆ Notre Dame is looking to continue its success in regular season tournament play, with the Fighting Irish having won 21 of their last 24 in-season tournament games, including last year's Paradise Jam in the U.S. Virgin Islands.
- ◆ Notre Dame hits the court on the heels of a pair of losses to nationally ranked teams after suffering defeats to #15/15 UCLA and #12/12 Kentucky.

Rankings

- ◆ Notre Dame is No. 18 in the latest Associated Press poll and No. 16 in the ESPN/USA Today poll.
- ◆ Butler, Wake Forest and IUPUI are not ranked.

Web Sites

- ◆ Notre Dame: www.UND.com
- ◆ IUPUI: www.iupuijags.com
- ◆ Wake Forest: www.wakeforestsports.com
- ◆ Butler: www.butlersports.com
- ◆ BIG EAST: www.bigeast.org
- ◆ Summit: www.thesummitleague.org
- ◆ Atlantic Coast: www.theacc.com
- ◆ Horizon: www.horizonleague.org

Setting The Standard

Under the guidance of 24th-year head coach **Muffet McGraw**, Notre Dame has evolved into one of the country's leading women's basketball powers. The Irish have appeared in 17 NCAA Tournaments (including a current streak of 15 in a row) and advanced to the NCAA Sweet 16 eight times in the past 14 seasons. Notre Dame also has reached the NCAA Women's Final Four twice, winning college basketball's ultimate prize with the 2001 national championship.

In its history, Notre Dame has developed nine All-Americans, 10 WNBA players (including seven draft picks in the past nine years) and four USA Basketball veterans (eight medals won). Now in their 34th season in 2010-11, the Irish own an all-time record of **691-304 (.694)**.

Notre Dame Head Coach Muffet McGraw

Saint Joseph's '77

- ◆ 24th season at Notre Dame
 - 527-205 (.719) at Notre Dame
 - 615-246 (.714) in 29th season overall
- ◆ 2011 Women's Basketball Hall of Fame inductee
- ◆ 2001 consensus National Coach of the Year
- ◆ Four-time Naismith Coach of the Year finalist
- ◆ Four-time conference Coach of the Year
 - 2001 BIG EAST Coach of the Year
- ◆ 2009 WBCA Carol Eckman Award recipient

Notre Dame's Possible Starting Lineup (C = captain)

No	Name	Pos	Ht	Yr*	PPG	RPG	Other	Notes
14	Devereaux Peters	F	6-2	Sr.	9.0	5.0	3.3 spg	• Career-high 23 pts vs UNH in 16 min.
32	Becca Bruszewski (C)	F	6-1	Sr.	8.0	7.0	1.0 spg	• 12 pts, 8 rebs at Kentucky
4	Skylar Diggins	G	5-9	So.	15.3	2.3	4.5 apg	• 18 pts, 3 rebs, 1 blk, 1 stl at Kentucky
21	Natalie Novosel	G	5-11	Jr.	16.0	5.0	2.0 spg	• Career-high 21 pts at Kentucky
23	Kayla McBride	G	5-11	Fr.	10.8	3.5	2.5 apg	• Crisp effort (11p/4r/3a) in 33 min vs UCLA

Off the Bench For the Irish

1	Erica Solomon	F	6-2	Jr.	5.8	1.8	1.8 spg	• 8th career gm dbl-fig pts (11 vs. UNH)
2	Veronica Badway	G	5-7	Jr.	2.0	0.5	0.5 spg	• Walk-on made college debut vs. UNH (3 pts)
11	Natalie Achonwa	F	6-3	Fr.	7.5	7.3	1.8 apg	• Near dbl-dbl vs UCLA (9 pts, 9 rebs)
12	Fraderica Miller	G	5-10	Jr.	1.5	1.5	2.0 spg	• Tied career high with 5 stls vs. MSU
15	Kaila Turner	G	5-8	So.	4.8	1.8	2.0 apg	• 10p, career-high 5a/4r vs. Morehead
22	Brittany Mallory (C)	G	5-10	Sr.	6.7	1.3	3.7 spg	• Sat out Kentucky game due to injury
41	Mary Forr	F	5-11	Sr.	3.0	1.5	1.0 apg	• Walk-on scored 6 pts in debut vs. UNH
44	Ariel Braker	F	6-1	Fr.	2.5	4.5	2.0 spg	• 5 pts/5 rebs/4 stls in debut vs. UNH

* = players listed by academic class (Mallory and Peters retain additional year of eligibility)

Pronunciations: Achonwa (uh-CHAWN-wuh); Bruszewski (broo-SHEFF-skee); Fraderica (fruh-DARE-uh-kuh); Kaila (KAY-luh); Novosel (KNOW-vuh-sell)

(x) = numbers before opponent name indicate ND rank in AP/ESPN-USA Today polls; numbers after are opponent rank; when only one ranking is shown, it is from the AP poll.

- = BIG EAST Conference game
- 1 = WBCA Classic (Purcell Pavilion at the Joyce Center - Notre Dame, Ind.)
- 2 = State Farm Holiday Classic (KeyArena at Seattle Center - Seattle, Wash.)
- 3 = BIG EAST Championship (XL Center - Hartford, Conn.)
- 4 = NCAA 1st/2nd rounds (at campus sites)
- 5 = NCAA Regionals (at Dallas, Dayton, Philadelphia, Spokane)
- 6 = NCAA Women's Final Four (Conseco Fieldhouse - Indianapolis, Ind.)

FSS = Game to be televised on Fox Sports South
CBS C = Games to be televised on CBS College Sports
BETV = Games to be televised on BIG EAST Network package

NOTE: All home games not scheduled for commercial TV tentatively will be webcast live and free of charge at UND.com.

All games will be broadcast live on radio by South Bend's Pulse FM (96.9/92.1) and worldwide on the Internet at UND.com.

All times Eastern // Dates and times subject to change





Quick Hitters

- With its No. 18 ranking in this week's Associated Press poll, Notre Dame now has appeared in the AP poll for a school-record 61 consecutive weeks, breaking the previous record first set from preseason 1998-Dec. 3, 2001.
- The Irish also have been voted into the pre-season AP poll in 11 of the past 12 seasons (since 1999-2000), something only seven other schools in the country can match.
- Notre Dame has a rugged 2010-11 schedule lined up, with games against at least one team from each of the top six RPI conferences (BIG EAST, ACC, Big Ten, Big 12, Pac-10 and SEC), and five matchups against four other teams that advanced to last year's NCAA Sweet 16 (Connecticut twice, Baylor, Gonzaga and Kentucky).
- The Irish will play a school-record 17 regular-season home games this year, including their first regular-season tournament (outside of the Preseason WNIT) since the 1983 Notre Dame Thanksgiving Classic. The three-day, round-robin WBCA Classic (also featuring IUPUI, Wake Forest and Butler) comes to Purcell Pavilion Nov. 26-28.
- There will be lots of new faces on the Irish schedule this season, with Notre Dame playing seven first-time opponents as part of its 14-game non-conference slate. Those new opponents include: New Hampshire (Nov. 12 - W, 99-48), Morehead State (Nov. 15 - W, 91-28), Kentucky (Nov. 21 - L, 76-81), Wake Forest (Nov. 27), Baylor (Dec. 1), Gonzaga (Dec. 29) and Southeast Missouri (Jan. 2).
- Notre Dame is closing in on the 1,000th game in the program's 34-year history, with that milestone contest set for Dec. 5 when the Irish play host to in-state rival Purdue at Purcell Pavilion in a nationally-televised game on ESPN2. Notre Dame currently has an all-time record of 691-303 (.695).
- The Irish have only one true senior on this year's roster — forward **Becca Bruszewski**. Guard **Brittany Mallory** and forward **Devereaux Peters** both are listed as seniors on the roster based on their academic standing, but each player has the option to petition for a fifth year of eligibility after both suffered season-ending knee injuries (torn ACL) within the first seven games of the 2008-09 campaign.
- Notre Dame welcomes a three-player freshman class that includes the program's first-ever international player (Canadian National Team forward **Natalie Achonwa**), a 2010 McDonald's All-American (Erie, Pa., native **Kayla McBride**) and a two-time Michigan Player of the Year (**Ariel Braker** from Grosse Pointe Woods, Mich.). Collectively, this group has been ranked as high as eighth in the country by ESPN Hoopgurlz.
- The Irish made a shift on their coaching staff during the offseason, as former longtime assistant and post coach guru **Carol Owens** (who previously served as Notre Dame from 1995-2005) returns to the program as associate coach following a successful five-year run as the head coach at her alma mater,

Northern Illinois. In addition, **Angie Potthoff** has moved into the newly-created role of associate director of operations & technology, a position that has seen her help direct Notre Dame's emergence as one of the nation's leaders in social media development among women's college basketball programs.

Other Notre Dame Notables

- Notre Dame is among the nation's winningest programs during the past 15 seasons (1996-97 to present), ranking seventh with 345 victories.
- Notre Dame has ranked among the top 20 in the nation in attendance each of the past 10 seasons. Last year, the program finished fourth in the final NCAA attendance rankings with 8,377 fans per game, both setting new school records in the process. The Irish also have drawn 5,000-or-more fans to 144 of their last 146 home games, logging 12 Purcell Pavilion sellouts (including a school-record six last year, including four of the final five home games, most recently on March 1, 2010 vs. top-ranked Connecticut).
- The Irish have become a regular fixture in the WNBA Draft in recent years, as seven Notre Dame players have been selected in the past decade. **Charel Allen** was the most recent Irish player to be chosen, going to the Sacramento Monarchs in the third round (43rd overall pick) of the 2008 WNBA Draft. **Ruth Riley** (San Antonio) was active in the league during the '10 season, helping the Silver Stars return to the playoffs for the fourth consecutive season. Three of Notre Dame's eight WNBA alums have won a total of four league championships — Riley won a pair of crowns with the Detroit Shock (2003 Finals MVP, 2006), **Coquese Washington** toiled for the 2000 Houston Comets, while **Jacqueline Batteast** was Riley's teammate on the '06 title-winning squad in Detroit.
- For the fifth year in a row, the Irish posted a perfect 100-percent Graduation Success Rate (GSR), according to figures released by the NCAA in October 2010. What's more, since **Muffet McGraw** became the Fighting Irish head coach in 1987, every Notre Dame women's basketball player that has completed her athletic and academic eligibility at the University has earned her bachelor's degree (a 62-for-62 success rate), with all three members of this year's senior class on target to earn their diplomas.

Series Notes - IUPUI

For the third time in five seasons, Notre Dame will tangle with IUPUI as the Irish seek to stay perfect in the abbreviated series with the Jaguars ... the contest will also open the WBCA Classic for the Irish, as IUPUI presents the first foe over a three-game, 72-hour stretch for Notre Dame ... it will be the second time in as many seasons that Notre Dame will play three games in three days in late November, also doing so at the 2009 Paradise Jam (Nov. 26-27) in the U.S. Virgin Islands ... the Irish enjoy a 2-0 cushion in the series history with back-to-back wins in 2007 and 2008, defeating the Jaguars by an average of 21.5 points over that stretch ... when the programs last met

Covering the Irish

Notre Dame Sports Information

C112 Joyce Center, Second Floor
Notre Dame, IN 46556
phone (574) 631-7516 // fax (574) 631-7941
Chris Masters, Associate Media Relations Director (WBB)
masters.5@nd.edu // cell (574) 532-4166

Media Services

The official Notre Dame athletics web site contains schedules, rosters, updated statistics and some historical information from previous seasons. High-resolution color headshots and action photos of Notre Dame players, coaches and staff are available upon request.

Official Notre Dame athletics web site:

- <http://www.UND.com>

In-Season Interview Policy

All requests for Notre Dame player, coach or staff interviews must be made through **Chris Masters** and 24 hours' notice is appreciated. Please be aware that student-athletes' academic obligations always take precedence before any interview requests.

Media members also may speak to Irish team personnel before or after practice sessions. While most practices are open to the media, some may be closed at the coaching staff's discretion — contact **Chris Masters** for the latest practice schedule and availability.

On game days, no interviews will be granted with any Notre Dame player or coach prior to competition.

Credentials / Parking

Season credentials will be issued to all media covering the Irish on a regular basis. Please note — any Notre Dame men's basketball season credential also offers access to all Irish women's basketball games.

For single-game credentials, contact **Chris Masters** no later than 24 hours before tipoff. Credential requests may be submitted via phone, fax or e-mail. Passes will be left at the media will call entrance (Gate 8) of Purcell Pavilion.

Parking is free for all Irish women's basketball games in the large lot south of Purcell Pavilion. Due to construction in the vicinity of the arena, there are no designated parking lots or specific parking passes for media members.

Credentials remain the property of the University of Notre Dame and may be revoked at any time.

Game Notes

Notre Dame's game notes package is completed and made available on-line through the official Irish athletics web site during the season, usually at least one day prior to tipoff. Notre Dame's game notes are in Adobe PDF format and will be distributed via *electronic means only* (e-mail or web). Fax distribution is by request only.

Please contact **Chris Masters** if you wish to be added to the e-mail distribution list for Notre Dame's regular women's basketball releases.

Gameday Services

Gameday packages containing game notes, programs and other information will be available prior to all home contests. A pre-game meal also will be served in the Monogram Room media area (exit through stands above Gate 6 to right of press row, entrance on right after exiting outer concourse doors) beginning 75 minutes before tipoff.

A bank of statistics monitors is located on press row for the media's convenience. Final statistics books include an official NCAA box score and play-by-play. Telephone, copier and fax services are available on a first-come, first-served basis. Purcell Pavilion also offers wireless Internet capability — check with **Chris Masters** for access.

Post-Game Interviews

Following each Notre Dame home game, Irish head coach **Muffet McGraw** and selected players, as well as the visiting head coach and selected players, will be available to speak with the media. Post-game press conferences are held in the Hammes Auditorium, located between Gates 1 & 2 on the first floor of Purcell Pavilion (exit court via Gate 1 ramp on opposite end of court from press row, go straight and turn right at the Notre Dame women's basketball office; auditorium entrance will be on your left).

Media members should submit player requests for post-game interviews to **Chris Masters** at the final media timeout of the second half.





2010-11 Standings (through Nov. 25)

	BIG EAST		Overall	
	W	L	W	L
Marquette	0	0	5	0
Cincinnati	0	0	4	0
West Virginia	0	0	4	0
Connecticut	0	0	3	0
Georgetown	0	0	3	0
Syracuse	0	0	3	0
DePaul	0	0	4	1
St. John's	0	0	4	1
Villanova	0	0	4	1
Louisville	0	0	3	2
Providence	0	0	3	2
Seton Hall	0	0	3	2
South Florida	0	0	3	2
Notre Dame	0	0	2	2
Pittsburgh	0	0	2	2
Rutgers	0	0	2	2

Preseason Awards

Player of the Year Maya Moore*, Connecticut
 Freshman of the Year Bria Hartley, Connecticut

All-BIG EAST Team

*Skylar Diggins, So., G Notre Dame
 Keisha Hampton, Jr., F DePaul
 *Tiffany Hayes, Jr., G Connecticut
 Sarah Miles, Sr., G West Virginia
 Monique Reid, Jr., F Louisville
 Liz Repella, Sr., G West Virginia
 Angel Robinson, Sr., G Marquette
 *Sugar Rodgers, So., G Georgetown
 Shenneika Smith, So., G St. John's
 Da'Shena Stevens, Jr., F St. John's
 * - unanimous selection

All-BIG EAST Honorable Mention

Erica Morrow, Sr., G Syracuse
 Deirdre Naughton, Sr., G DePaul
 Sam Quigley, Sr., G DePaul
 Khadijah Rushdan, Jr.-RS, G Rutgers

Around the BIG EAST

Dec. 21, 2007, Charel Allen had 12 points and five steals as No. 17 Notre Dame defeated the Jaguars, 67-44, for its eighth straight win of the season ... with the output, Allen moved into 16th place on the Notre Dame career scoring list with 1,203 points, passing both Krissi Davis (1,194 points from 1987-91) and Heidi Bunek (1985-89) ... Devereaux Peters had 11 points and four blocks in the contest ... Notre Dame forced 28 turnovers in IUPUI's second-ever home game against a ranked opponent ... the Irish held the Jaguars to 24 percent shooting in the second half ... that game was especially memorable for former Irish guard Ashley Barlow, who was playing in her hometown for the first time as a college player ... Barlow scored her first points on a bucket with 16:33 to play, sparking a loud cheer ... a section of about 200 fans held up light green signs that read "Go Ashley" ... Barlow's brother, Davis, played for the IUPUI men's team ... the 2007 win gave Notre Dame a 10-1 start to the season for the third time in school history, matching its 11-game record in 2004-05 and one game back of its 11-0 debut in the 2000-01 national championship season ... the Irish reach the 10-win mark faster than any team in school history except the '04-05 club, which got its 10th victory two days earlier on Dec. 19 (the '00-01 squad also earned win #10 on Dec. 21) ... the Irish also limited IUPUI to 17 points in the second half.

Series Notes - Wake Forest

Never before has Notre Dame played Wake Forest, but that will change on day two of the WBCA Classic ... Notre Dame is 12-2 (.846) all-time against teams from the state of North Carolina - including a 4-0 record at Purcell Pavilion - following a 2009 home win over Charlotte ... that may be a good indication of things to come, as the 90-31 romp over the 49'ers was the fourth-largest margin of victory in Irish history (59 points) and their largest since Nov. 24, 1989, when Notre Dame set a school record in that category by defeating Liberty, 113-35, in the first round of the UCF Rotary Classic in Orlando, Fla. ... before the win over Charlotte, the last time the Irish played host to a team from the Tar Heel State was on Nov. 17, 2004, when Notre Dame downed sixth-ranked Duke, 76-65 in the semifinals of the Preseason WNIT ... Wake Forest was picked to finish ninth in the Atlantic Coast Conference, coming an 18-14 campaign that saw them finish tied for fifth in the ACC ... the Deacons and seventh-year head coach Mike Petersen return four starters, ten letterwinners and 90 percent of its scoring ... only two Irish players have hailed from North Carolina state: Mary Joan Forbes (1980-81) of Raleigh and Erica Williamson (2006-10) of Charlotte ... Williamson graduated from South Mecklenburg High School in 2006, and in her one year at the school, she helped the Lady Sabres post a 27-3 record and win the North Carolina Class 4A title (the school's first crown in 20 years) ... Williamson scored 13 points in the championship game and was named the Western Regional Most Valuable Player.

Series Notes - Butler

One of most frequented non-conference opponents in the Irish annals, Butler will present Notre Dame's final challenge of the WBCA Classic to cap off a three-game marathon within a 72-hour span ... excluding the current contingency of BIG EAST programs, Notre Dame has only played Dayton (28) more times than Butler (25) and any other non-conference foe ... Notre Dame leads the all-time series, 19-6 ... 10 of those wins have come at home for the Irish with a 7-3 record on the road and a pair of wins - without a loss - at neutral sites ... Butler won the first two meetings (1980 and 1981) before Notre Dame rattled off 13 straight victories ... the Bulldogs then notched four wins in the next five meetings, with Notre Dame coming up roses in each of the last five affairs ... as members of the Midwest Collegiate Conference, Notre Dame and Butler twice met in the league's postseason tournament ... Notre Dame won the 1990 meeting (67-66) and did so again in 1991 (62-52) to send the Bulldogs home from the tournament which was held both years in Dayton, Ohio ... senior guard Alyssa Pittman hails from nearby Elkhart, Ind., prepping at Elkhart Central ...

Butler head coach Beth Couture, now in her ninth year with the program, is 128-133 (.531) with the Bulldogs with five straight winning seasons (including three straight 20-win seasons) and a pair of WNIT appearances (2009 and 2010) ... she mentored the Bulldogs to a 23-10 record (14-4 Horizon League) in 2009-10, the team's most wins in 12 years ... Butler's second straight WNIT appearance also marked the first time the program has had consecutive postseason berths since becoming a Division I team.

November To Remember

Notre Dame's success during the past 16 years has been aided by its ability to get off to a good start. To wit - the Fighting Irish are 63-13 (.831) in November games since they joined the BIG EAST Conference in time for the 1995-96 season.

Notre Dame also just had a 16-game November winning streak ended with Thursday's double-overtime loss to No. 15 UCLA. That streak started on Nov. 20, 2007 with a 94-41 victory at Central Michigan and came four days after a 75-59 loss at third-ranked Maryland in the Preseason WNIT semifinals.

ND vs. First-Time Opponents Since '00-01		
11/27/00	Fordham*	W, 89-44
12/31/00	Rice*	W, 80-40
1/3/01	Va. Tech	W, 75-64
3/17/01	Alcorn St.*	W, 98-49
3/24/01	Utah	W, 69-54
11/21/01	Colorado St.	L, 66-72
11/26/01	Army*	W, 89-57
3/15/02	New Mexico	W, 58-44
3/25/03	Kansas St.	W, 59-53
11/14/03	Auburn	W, 77-64
3/23/04	Middle Tenn.*	W, 59-46
12/17/05	Arkansas St.	W, 77-54
12/16/06	IUPUI*	W, 75-65
12/28/06	Prairie View*	W, 94-55
3/18/07	California	W, 62-59
11/13/07	W. Kentucky*	W, 78-59
11/27/07	Canisius*	W, 93-47
12/29/07	St. Francis (Pa.)*	W, 82-39
11/25/08	Ga. Southern*	W, 85-36
12/28/08	Charlotte	W, 68-61
11/15/09	Ark.-Pine Bluff*	W, 102-57
3/23/10	Vermont*	W, 84-66
11/12/10	New Hampshire*	W, 99-48
11/15/10	Morehead St.*	W, 91-28
11/21/10	Kentucky	L, 76-81

* = home game
 NCAA tournament games in bold





Game #4 Recap: Kentucky

Muffet McGraw glanced at the stat sheet at halftime, saw No. 9 Kentucky was struggling from 3-point range and told her team to let the Wildcats keep shooting.

But Kentucky guard Keyla Snowden got hot, redshirt freshman Bernisha Pinkett did, too, and Victoria Dunlap did the rest, as Kentucky held off the 12th-ranked Irish 81-76 on Sunday.

For a couple of spectacular minutes, Snowden was everywhere, knocking down a series of deep jumpers in the second half to blunt a Notre Dame comeback. The junior finished with 17 points as Kentucky (3-0) won its 20th straight game at Memorial Coliseum.

The Wildcats needed it after Notre Dame (2-2) cut a 12-point deficit to 59-58 on a tip-in by Natalie Novosel. Snowden drilled a 3-pointer from several feet behind the line to push the lead back to four.

The Irish pulled within 66-65 a minute later on a conventional three-point play by Becca Bruszewski when Pinkett one-upped her teammate, banking in a 3-pointer from the corner to put Kentucky up 69-65 with 5:16 left. The Irish would get no closer the rest of the way.

Dunlap made sure it was enough. The defending Southeastern Conference Player of the Year had 24 points, 14 rebounds, four assists, three blocks and two steals in 38 grueling minutes.

Novosel led Notre Dame with 21 points and Skylar Diggins had 18 points, but the Irish came undone in the first half after forward Devereaux Peters went to the bench with foul trouble. The Wildcats ripped off a 19-2 run to take a lead they would never surrender.

Notre Dame gave it away 17 times and made just 2 of 15 3-pointers, allowing the undersized Wildcats to overcome a distinct size disadvantage. The Irish dominated the glass, outrebounding Kentucky 51-35 and scoring 52 points in the paint.

Yet Kentucky's aggressiveness attacking Notre Dame's zone allowed the Wildcats to get to the free throw line with regularity. The Wildcats outscored the Irish 21-10 at the line despite an uncharacteristically sloppy day from sophomore star A'Dia Mathies, who had just six points and four rebounds, including a 2-for-8 performance at the line.

Still, Mathies made a couple of huge defensive plays, none bigger than a strip of Diggins with 15 seconds remaining and the Wildcats nursing a four-point lead. She made one of two to preserve the win and perhaps send a message that the Wildcats are for real.

Kentucky won 28 games and reached the NCAA regional finals a year ago and earned the highest preseason ranking in team history. The Wildcats backed it up with their first win over a ranked non-conference opponent at home since beating Western Kentucky in 1997.

The loss spoiled a homecoming for Novosel, who starred at Lexington Catholic. She didn't appear nervous, scoring Notre Dame's first seven points.

Noting The Kentucky Game

- Notre Dame was facing back-to-back opponents ranked in the top 15 of the Associated Press poll during the regular season for the first time since the 2004 Preseason WNIT,

when the Fighting Irish defeated #6 Duke (76-65 on Nov. 17) and #10/9 Ohio State (66-62 on Nov. 20).

- Notre Dame saw its 18-game winning streak against first-time opponents snapped, falling to a new foe for the first time since Nov. 21, 2001, when Colorado State shaded the Fighting Irish, 72-66, in Fort Collins, Colo.
- Notre Dame is 23-2 against first-time opponents since the start of the 2000-01 season and 43-6 against new teams since joining the BIG EAST Conference in 1995-96.
- Kentucky was the third of seven first-time opponents on this year's Fighting Irish schedule, and third in four games following home wins over New Hampshire (99-48) and Morehead State (91-28) during the opening weekend of the season.
- Notre Dame basketball teams fell to 0-5 all-time at Memorial Coliseum, with Sunday's game being the first time a Fighting Irish hoops squad played in the historic venue since 1961, when the UK men's team defeated its Notre Dame counterpart, 100-53 ... Notre Dame also had its four-game winning streak against Southeastern Conference opponents come to an end, falling to an SEC school for the first time since March 30, 2008, when Tennessee rallied past the Fighting Irish, 74-64 in the NCAA Oklahoma City Regional semifinals at the Ford Center in Oklahoma City, Okla.
- For the second time this season, Notre Dame posted a rebound margin of +16 or better, having notched a season-high +18 margin on the backboards (47-29) against Morehead State on Nov. 15 at Purcell Pavilion ... Notre Dame grabbed a season-high 51 rebounds, its best total on the glass since Dec. 31, 2009, when the Fighting Irish nabbed 56 cars in a 74-69 win over #18/16 Vanderbilt, also at Purcell Pavilion.
- In her homecoming game, Lexington, Ky., native (and junior guard) Natalie Novosel scored a career-high 21 points, two more than her previous best set twice before (most recently this past Thursday in the double-overtime loss to #15 UCLA at Purcell Pavilion) ... Novosel also tied her career high with eight rebounds, having reached that mark twice before (most recently on Dec. 2, 2009, against Eastern Michigan), and she set new personal bests with eight field goals (previous: seven, three times, including Thursday vs. UCLA), 24 attempts (previous was 12 against UCLA), seven three-point attempts (previous was four against UCLA), and two blocks (previous: one on 10 occasions, the last against Oklahoma on March 28, 2010 in the NCAA regional semifinals).
- Freshman forward Natalie Achonwa grabbed a season-high 13 rebounds, also tying senior forward Becca Bruszewski for the most boards by a Fighting Irish player this season (Bruszewski had a baker's dozen against UCLA).

Polling Station

Notre Dame is ranked 12th in this week's Associated Press poll. That marks the 60th consecutive AP poll appearance for the Irish, setting a new program record and surpassing the old standard

National Polls

Associated Press Poll

• November 23, 2010: Week 2

Team	Record	Votes	LP
1 Connecticut	3-0	998	1
2 Baylor	5-1	937	2
3 Stanford	3-0	926	3
4 Tennessee	4-0	878	4
5 Xavier	3-0	819	5
6 Duke	5-0	808	6
7 Ohio State	4-0	759	7
8 Texas A&M	3-0	685	8
9 Kentucky	3-0	682	9
10 West Virginia	3-0	618	10
11 Oklahoma	3-0	591	11
12 Georgetown	3-0	540	13
13 UCLA	4-0	509	15
14 North Carolina	4-0	470	14
15 Florida State	4-0	430	16
16 Texas	4-0	356	17
17 Georgia	3-1	318	18
18 Notre Dame	2-2	313	12
19 Iowa State	3-0	301	19
20 Iowa	5-0	235	22
21 TCU	3-0	173	23
22 St. John's	4-1	164	20
23 Maryland	3-1	98	21
24 Vanderbilt	2-1	80	23
25 Michigan State	3-1	66	25

ESPN/USA Today/WBCA Coaches' Poll

• November 23, 2010: Week 2

Team (record)	Points	LP	1st
1 Connecticut (3-0)	775	1	31
2 Stanford (3-0)	720	3	0
3 Baylor (4-1)	714	2	0
4 Tennessee (4-0)	686	4	0
5 Xavier (2-0)	638	5	0
6 Duke (4-0)	626	6	0
7 Ohio State (4-0)	565	7	0
8 Texas A&M (3-0)	553	8	0
9 Kentucky (3-0)	522	10	0
10 Oklahoma (3-0)	501	9	0
11 West Virginia (3-0)	454	11	0
12 Georgetown (3-0)	419	13	0
13 UCLA (4-0)	394	15	0
14 Florida State (4-0)	381	14	0
15 North Carolina (4-0)	321	16	0
16 Notre Dame (2-2)	265	12	0
17 Iowa State (3-0)	256	17	0
18 Georgia (3-0)	234	18	0
19 Texas (3-0)	225	19	0
20 Nebraska (4-0)	138	21	0
21 Iowa (5-0)	131	24	0
22 Vanderbilt (2-1)	110	20	0
23 Wisconsin-Green Bay (3-0)	100	NR	0
24 St. John's (4-1)	94	23	0
25 TCU (3-0)	82	25	0

LP = last poll

1st = first-place votes





set from 1998 (preseason poll) to Dec. 3, 2001.

This year's No. 12 preseason ranking also represented the 11th time in the past 12 years (starting with the 1999-2000 campaign) that Notre Dame has appeared in the preseason AP poll, something only eight schools in the nation have done — Connecticut, Duke and Tennessee have shown up in all 12 during that span, while Georgia, North Carolina, Oklahoma and Stanford join the Irish with 11 preseason AP poll berths.

Notre Dame has been ranked in the AP poll for 199 weeks during the program's 34-year history, with every one of those appearances coming in the **Muffet McGraw** era (since 1987-88). McGraw ranks 13th among all active NCAA Division I head coaches for weeks in the AP poll, and also is 22nd all-time in that category.

In addition, the Fighting Irish are ranked 12th in the latest ESPN/USA Today/WBCA coaches' poll. Notre Dame now has been ranked in the coaches' survey for 60 of the past 61 weeks, falling just outside the Top 25 in the final poll of the 2008-09 season. Nevertheless, the Fighting Irish have appeared in the coaches' poll for a total of 191 weeks during their history (all coming during McGraw's tenure).

More Polling Data

Notre Dame head coach **Muffet McGraw** is one of 28 people in NCAA Division I women's basketball history who have both played for and coached a team that has appeared in the Associated Press Top 25 poll.

Besides her 199 AP poll appearances while coaching at Notre Dame, McGraw was the starting point guard at Saint Joseph's (Pa.) as a senior in 1977, helping the Hawks rise to No. 3 in the nation.

Of the 28 people on this list, 15 currently are NCAA Division I head coaches (see accompanying chart), including former Fighting Irish point guard and assistant coach **Coquese Washington** ('92), who helped Notre Dame to its first-ever AP poll ranking in 1990-91, and is in her fourth season as head coach at Penn State, guiding the Lady Lions into the AP poll at No. 23 on Jan. 25, 2010.

Six of the 16 active coaches in this group — including McGraw — led their teams to this year's NCAA Championship, while McGraw and Baylor's **Kim Mulkey** are the only active skippers to play for and coach a team in the AP poll, and also coach that team to a national title (McGraw in 2001, Mulkey in 2005).

Notre Dame Picked Fourth In 2010-11

BIG EAST Coaches' Preseason Poll

Notre Dame was selected to finish fourth in the BIG EAST Conference in 2010-11, according to a preseason vote of the league's 16 head coaches released on Oct. 21 during the annual BIG EAST Women's Basketball Media Day at the B.B. King Blues Club & Grill in New York City.

The Irish picked up 177 points in the balloting (coaches may not vote for their own teams), placing behind only two-time defending national champion Connecticut, which was a unanimous choice to win the conference title with 225 points, West Virginia (207 points, one first-place vote) and Georgetown (186 points) — St. John's rounded out the top five with 173 points.

Diggins Earns 2010-11

Preseason All-BIG EAST Honors

Along with picking Notre Dame to finish fourth in the conference this year in their preseason poll, the BIG EAST coaches unanimously voted sophomore guard **Skylar Diggins** to be the 10-player Preseason All-BIG EAST Team.

A preseason candidate for the Women's Basketball Coaches Association (WBCA)/State Farm Wade Trophy, Naismith Trophy and the John R. Wooden Award, as well as a consensus preseason All-American by most major media outlets, Diggins is coming off one of the finest rookie seasons in Fighting Irish women's basketball history as the first freshman in 17 seasons to lead Notre Dame in scoring and the first rookie in 16 years to top 100 assists in her debut season. What's more, she finished as just the third player in program history (and the first freshman) to log 400 points, 100 assists and 75 steals in a single season, joining a pair of All-Americans and Frances Pomeroy Naismith Award (top senior in the nation 5-foot-8 and under) recipients — current Notre Dame assistant coach **Niele Ivey** (2000-01) and **Megan Duffy** (2004-05) — in achieving that distinction.

A 2009-10 honorable mention All-America selection by both the Associated Press and WBCA, Diggins led Notre Dame in scoring (13.8 ppg.), steals (2.6 spg.) and assists (tied - 3.2 apg.) last season, while ranking third on the squad in three-point percentage (.350) and free throw percentage (.782). She also chalked up a team-high 24 double-digit scoring games, including seven 20-point outings, capped by a season-high 31 points against Vermont in the second round of the NCAA Championship at Purcell Pavilion. That scoring effort was the highest ever recorded by a Fighting Irish rookie in NCAA postseason play, while her 13 field goals made tied the program record for an NCAA tournament game.

In 2009-10, Diggins set Notre Dame freshman records for steals (90), free throws made (111), free throws attempted (142) and minutes played (1,028), while ranking among the top five on the Irish rookie charts for points (3rd - 484), scoring average (tied/4th - 13.8 ppg.), field goals made (3rd - 169), field goals attempted (3rd - 385), three-point field goals made (4th - 35), three-point attempts (5th - 100), three-point percentage (5th - .350), assists (3rd - 112), steals per game (2nd - 2.6 spg.), games started (tied/2nd - 30), games played (2nd - 35) and minutes per game (5th - 29.4).

McGraw Is Simply Legendary

The announcement on July 10, 2010, may have made it official, but it really only confirmed what Notre Dame fans have known for a very long time — head coach **Muffet McGraw** is a Hall of Famer.

McGraw, the 2001 consensus national coach of the year and winner of more than 600 games in her illustrious career, was one of six people — and the lone coach — named to the 2011 Women's Basketball Hall of Fame Class, as announced in Uncasville, Conn., during the "WNBA vs. USA Basketball: The Stars at the Sun Game" that was televised live nationally on ESPN from Mohegan Sun Arena.

The others in McGraw's Hall of Fame class

include former Olympic gold medalists **Ruthie Bolton** (Auburn) and **Vicky Bullett** (Maryland), as well as **Val Ackerman**, the first WNBA president (1996-2005) and first female president of USA Basketball (2005-08), and a pair of three-time All-America players from the pre-NCAA era, **Pearl Moore** (Frances Marion) and **Lometa Odom** (Wayland Baptist).

The '11 class officially was introduced at the 2010 State Farm Tip-Off Classic on Nov. 16 at the XL Center in Hartford, Conn., before the Connecticut-Baylor game (McGraw was not able to attend due to NCAA regulations). The group will be enshrined June 10-12, 2011, during the 13th annual Induction Weekend at the Women's Basketball Hall of Fame in Knoxville, Tenn.

McGraw becomes the first Notre Dame selection for the Women's Basketball Hall of Fame. The Irish skipper also is the third BIG EAST Conference coach chosen for the honor, joining Rutgers' **C. Vivian Stringer** (2001) and Connecticut's **Geno Auriemma** (2006) in that elite company. First-year Seton Hall head coach **Anne Donovan** also was a member of the Women's Basketball Hall of Fame inaugural class in 1999, going in primarily for her accomplishments as a player at Old Dominion.

McGraw also will be the ninth active college head coach to enter the Women's Basketball Hall of Fame on the basis of her success on the sidelines. Besides Stringer and Auriemma, the others on this notable list are: **Pat Summitt** (1999 - Tennessee), **Van Chancellor** (2001 - LSU), **Tara VanDerveer** (2002 - Stanford), **Sylvia Hatchell** (2004 - North Carolina), **Andy Landers** (2007 - Georgia) and **Debbie Ryan** (2008 - Virginia).

Riley's Double Zero Goes To The Rafters

Ruth Riley, a three-time All-America center at Notre Dame during her storied career from 1997-2001, and the 2001 consensus national player of the year, was inducted into Notre Dame's Ring of Honor on Nov. 12 during a pre-game ceremony before the Fighting Irish opened their 2010-11 season against New Hampshire at Purcell Pavilion.

A banner honoring Riley's number 00 was unveiled and now permanently hangs in the rafters of Purcell Pavilion, making her the first women's basketball player added to the Ring of Honor, and the second player overall following last spring's induction of men's basketball All-America forward **Luke Harangody**.

Beginning in 2010-11, the Notre Dame Athletics Department plans to honor annually additional former and present men's and women's basketball and volleyball players who have made distinguished and noteworthy contributions during their career while student-athletes at the University. A committee that will consist of Fighting Irish coaches and administrators will be formed to determine future inductees.

The only player in Notre Dame women's basketball history with 2,000 career points and 1,000 rebounds, Riley ranks as the program's all-time leader in seven categories, including rebounds (1,007), blocked shots (370 - fifth in NCAA history) and field goal percentage (.632 - 11th in NCAA history). What's more, the Macy, Ind., native ranks third in school history with 2,072 points, and holds the Fighting Irish single-game scoring





record with 41 points in a January 1998 win over Providence. Riley also played a pivotal role in Notre Dame's run to the 2001 NCAA national championship, earning Final Four Most Outstanding Player honors after scoring 28 points and grabbing 13 rebounds in the title game victory over Purdue, capped by her gamewinning free throws with 5.8 seconds remaining.

A 10-year WNBA veteran (the past four with the San Antonio Silver Stars), two-time WNBA champion and 2004 Olympic gold medalist, Riley was back on campus with the other members of the 2001 championship team for ceremonies honoring the 10th anniversary of that milestone achievement in Notre Dame athletics history.

Half And Half

During the past decade, Notre Dame has been nearly unbeatable when it has the lead at half-time. The Fighting Irish are 190-17 (.918) since the start of the 2000-01 campaign when they go into the dressing room with the lead, including wins in 118 of their last 129 such contests.

Notre Dame has led at the break in its first two games this year, after doing the same in 25 games last season (earning victories each time).

The Best Offense Is A Good Defense...

During the past 16 seasons, Notre Dame has discovered that a solid defensive effort can almost certainly guarantee a victory. In fact, since the beginning of the 1995-96 season (Notre Dame's first in the BIG EAST Conference), the Fighting Irish have an amazing 210-15 (.933) record when they hold their opponents below 60 points in a game, including victories in each of their first two contests this season.

...But Sometimes You Have To Score If You Want To Win

Not resting solely on its defensive laurels, Notre Dame also seemingly has found the magic mark when it comes to outscoring its opponents. During the past 16 seasons (since 1995-96), the Fighting Irish are 142-5 (.966) when they score at least 80 points in a game. The only blemishes on that record are three overtime losses to Texas A&M (88-84) and Michigan State (87-83) in 1995 and UCLA (86-83 in double OT) in 2010, as well as a 106-81 loss to Connecticut in 1998, and an 81-80 loss to DePaul in 2008.

Notre Dame has topped the 80-point mark in all three games this year (2-1 record) after going 17-0 last season when it scored at least 80 points, including four games when it topped the 90-point mark.

AP Poll Appearances As Player & Coach (active coaches only)

- Amanda Butler (Florida)
- June Daugherty (Wash. St.)
- Nell Fortner (Auburn)
- MaChelle Joseph (Ga. Tech)
- Wendy Larry (ODU)
- Joanne McCallie (Duke)
- ◆Muffet McGraw (ND)
- Katie Meier (Miami-Fla.)
- Kim Mulkey (Baylor)
- Kathy Olivier (UNLV)
- Jennifer Rizzotti (Hartford)
- Dawn Staley (S. Carolina)
- Charli Turner Thorne (Ariz. St.)
- Coquese Washington (Penn St.)
- Terri Williams-Flournoy (G'town)

NOTES: Current teams listed ... all coaches shown have made AP poll with current teams except Daugherty (did so at Boise State and Washington), Olivier (UCLA) and Staley (Temple) ... Butler, Larry and Olivier are coaching at their alma maters.

Now That's A Home Court Advantage

One of the hallmarks of Notre Dame's success has been its stellar play at home. In fact, the Fighting Irish have been virtually untouchable at home in recent years, winning 191 of their last 217 games (.880) at the 9,149-seat Purcell Pavilion, including winning streaks of 51 and 25 games in that span. Notre Dame also has a 106-18 (.855) record in BIG EAST Conference play at the former Joyce Center, sporting a 31-game league winning streak at home before it ended with a 48-45 loss to Villanova in the '02 home finale.

The Fighting Irish have been particularly strong when it comes to non-conference games at home, winning 87 of their last 95 non-BIG EAST contests (.916) at Purcell Pavilion, dating back to the 1994-95 season. Five of the eight losses in that span came at the hands of Big Ten Conference opponents (four by 12 points or less) — Wisconsin in 1996 (81-69), Purdue in 2003 (71-54), Michigan State in 2004 (82-73 OT), Indiana in 2006 (54-51) and Minnesota in 2009 (79-71) — with the other defeats coming to Tennessee in 2005 (62-51) and 2008 (87-63), and to UCLA in 2010 (86-83 in 2OT). The Purdue loss also snapped a 33-game non-conference home winning streak which began after the UW setback.

Since its inaugural season in 1977-78, Notre Dame has played all of its games at the former Joyce Center, posting a 341-87 (.797) record at the venerable facility. Three times (1999-2000, 2000-01 and 2003-04), the Fighting Irish went a perfect 15-0 at home, which was the school record for home victories in a season prior to last year, when Notre Dame went 16-1, capped by an 84-66 triumph over Vermont on March 23, 2010, in the second round of the NCAA Championship.

Irish Are The Hottest Ticket In Town

The 2009-10 season saw an unprecedented surge in fan support for Notre Dame women's basketball, as the Fighting Irish set new program records for the highest year-end NCAA attendance ranking (fourth), highest average attendance (8,377 fans per game) and most sellouts (six) in a single season. And, as the old saying goes — "you ain't seen nothin' yet."

For the second consecutive preseason, Notre Dame fans have all but exhausted the program's season ticket packages (close to 7,500) and are snapping up single-game ducats at a rate that will have the Fighting Irish challenging their freshly-minted single-season average attendance record in 2010-11.

Notre Dame has wasted little time in getting started with that challenge, averaging 8,067 fans for its first three home games this season.

Part of the appeal of Notre Dame women's basketball can be traced to the renovated Purcell Pavilion at the Joyce Center, which has yet another new feature this season with the addition of a four-sided LED video scoreboard high above center court, as well as LED auxiliary scoreboards above all four court-level entrance ramps and at the scorer's table.

2010-11 Trends

Day of the Week

Sunday	0-1
Monday	1-0
Tuesday	0-0
Wednesday	0-0
Thursday	0-1
Friday	1-0
Saturday	0-0

Time of Game

Day games (before 6 p.m. local time)	1-1
Night games (6 p.m. or later local time)	1-1

Location

Home games	2-1
Road games	0-1
Neutral site games	0-0

Halftime score

Leading at the half	2-0
Tied at the half	0-1
Trailing at the half	0-1

Individual scoring

Two or fewer double-figure scorers	0-0
Three double-figure scorers	0-0
Four double-figure scorers	2-2
Five or more double-figure scorers	0-0

Rebounding margin

Grab more rebounds than opponents	2-1
Grab same number of rebounds	0-0
Grab fewer rebounds than opponents	0-1

Field goal shooting

Higher pct. than opponent	1-2
Lower pct. than opponent	0-0
Same pct. as opponent	1-0
Shoot 45% or better	2-1
Shoot less than 45%	0-1
Hold opponent under 40%	1-1

Free throw margin

Make more free throws	2-0
Make same number of free throws	0-0
Make fewer free throws	0-2

Turnovers

Commit fewer turnovers	2-0
Commit same number of turnovers	0-0
Commit more turnovers	0-2

Miscellaneous

Vs. Top 25 (AP or ESPN/USA Today polls)	0-2
On commercial television	0-0
In white jerseys	2-1
In alternate white jerseys (green trim)	0-0
In alternate white jerseys (pink trim)	0-0
In blue jerseys	0-1
In green jerseys	0-0

Margin of Victory

1-5 points	0-2
6-10 points	0-0
11-15 points	0-0
16-20 points	0-0
21+ points	2-0
In overtime games	0-1

Conference Affiliation

America East	1-0
Atlantic Coast	0-0
BIG EAST	0-0
Big Ten	0-0
Big 12	0-0
Horizon League	0-0
Missouri Valley	0-0
Ohio Valley	1-0
Pac-10	0-1
Southeastern	0-1
Summit League	0-0
West Coast	0-0

Month

November	2-2
December	0-0
January	0-0
February	0-0
March	0-0



**2010-11 University of Notre Dame Women's Basketball Results****Overall Record: 2-2 (Home: 2-1, Away: 0-1, Neutral: 0-0); BIG EAST Conference Record: 0-0**

----- Notre Dame Highs -----

Date	ND NR	Opp NR	Opponent	Time/Result	Streak	Record	BEC	Scorer	Rebounder	Assists	Attendance
Nov. 12	12/12		NEW HAMPSHIRE	W 99-48	W1	1-0		Peters-23	Peters-8	Achonwa-5	8,614
Nov. 15	12/12		MOREHEAD STATE	W 91-28	W2	2-0		McBride-14	Bruszewski-7	Diggins-8	7,763
Nov. 18	12/12	15/15	(1) UCLA	L 83-86 (2ot)	L1	2-1		Diggins-22	Bruszewski-13	Diggins-5	7,824
Nov. 21	12/12	9/10	at Kentucky ^{FSS}	L 76-81	L2	2-2		Novosel-21	Achonwa-13	McBride-4	6,794
Nov. 26			(2) IUPUI	2:00 p.m.							
Nov. 27			(2) WAKE FOREST	2:00 p.m.							
Nov. 28			(2) BUTLER	2:00 p.m.							
Dec. 1			at Baylor	8:00 p.m.							
Dec. 5			PURDUE ^{ESPN2}	2:00 p.m.							
Dec. 8			• at Providence	7:00 p.m.							
Dec. 11			CREIGHTON	2:00 p.m.							
Dec. 20			at Valparaiso	8:05 p.m.							
Dec. 29			(3) vs. Gonzaga	7:30 p.m.							
Dec. 30			(3) vs. Loyola Marymount	7:30 p.m.							
Jan. 2			SOUTHEAST MISSOURI ST.	2:00 p.m.							
Jan. 5			• at Marquette	8:00 p.m.							
Jan. 8			• CONNECTICUT ^{CBS}	2:00 p.m.							
Jan. 12			• LOUISVILLE	7:00 p.m.							
Jan. 15			• at Pittsburgh	2:00 p.m.							
Jan. 18			• GEORGETOWN ^{CBS C}	7:00 p.m.							
Jan. 23			• ST. JOHN'S ^{ESPN}	2:00 p.m.							
Jan. 29			• at Villanova	7:00 p.m.							
Feb. 1			• SYRACUSE	7:00 p.m.							
Feb. 5			• at South Florida	7:00 p.m.							
Feb. 8			• SETON HALL	7:00 p.m.							
Feb. 12			• RUTGERS	2:00 p.m.							
Feb. 19			• at Connecticut ^{BIG EAST TV}	2:00 p.m.							
Feb. 22			• at West Virginia ^{CBS C}	7:00 p.m.							
Feb. 26			• CINCINNATI	2:00 p.m.							
Feb. 28			• at DePaul ^{CBS C}	9:00 p.m.							

BIG EAST Championship (Hartford, Conn. — XL Center)

March 4	First Round	TBA
March 5	Second Round ^{BIG EAST TV}	TBA
March 6	Quarterfinals ^{ESPN}	TBA
March 7	Semifinals ^{ESPN}	6/8 p.m. ET
March 8	Final ^{ESPN}	7 p.m. ET

NCAA Championship — First & Second Rounds (Campus Sites)

March 19-20	First Round ^{ESPN/ESPN2}	TBA
March 21-22	Second Round ^{ESPN/ESPN2}	TBA

NCAA Regionals (Dallas, Texas/Dayton, Ohio/Philadelphia, Pa./Spokane, Wash.)

March 26-27	Regional Semifinals ^{ESPN}	TBA
March 28-29	Regional Finals ^{ESPN}	TBA

NCAA Women's Final Four (Indianapolis, Ind. — Conseco Fieldhouse)

April 3	National Semifinals ^{ESPN}	TBA
April 5	National Championship ^{ESPN}	TBA

• = indicates BIG EAST Conference game

NR = national ranking (listed as Associated Press/ESPN-USA Today)

(c) = indicates capacity crowd

(1) = Super Six Series (Notre Dame, Ind.)

(2) = WBCA Classic (Notre Dame, Ind.)

(3) = State Farm Holiday Classic (Seattle, Wash.)

FSS = Game to be televised live on Fox Sports South (simulcast on WHME-TV Ch. 46 in South Bend)

CBS CS = Games to be televised live on CBS College Sports

BIG EAST TV = Games to be televised live as part of BIG EAST Network syndicated package

NOTE: All regular-season home games not scheduled for commercial TV will be webcast live at UND.com

All times listed are Eastern and are subject to change

Home games listed in ALL CAPS and played inside Purcell Pavilion at the Joyce Center (capacity 9,149)

2010-11 ATTENDANCE

	Totals	Avg.	High
All Games:	30,995	7,749	8,614 (11/12-UNH)
Home:	24,201	8,067	8,614 (11/12-UNH)
Away:	6,794	6,794	6,794 (11/21-KY)
Neutral:			





The Last Time Notre Dame...

SCORING

Player scored 25 points: see 30 points
Player scored 30 points: Skylar Diggins (31) vs. Vermont, 3/23/10
Player scored 35 points: Charel Allen (35) vs. Oklahoma, 3/25/08 (@ West Lafayette, Ind.)
Player scored 40 points: Ruth Riley (41) at Providence, 1/30/99
Two players scored 20 points: Lindsay Schrader (23) and Becca Bruszewski (20) vs. Syracuse, 2/24/09
Three players scored 20 points: Danielle Green (28), Sheila McMillen (26), Ruth Riley (23) vs. West Virginia, 1/7/99
Two players scored 25 points: Alicia Ratay (26) and Ruth Riley (26) at Rutgers, 2/19/00
Player scored 25 points/games: Charel Allen (25 vs. DePaul, 2/11/07; 25 at Villanova, 2/13/07; 26 at Providence, 2/17/07)
None in double figures: at Seton Hall, 2/8/04
One in double figures: Skylar Diggins (10) vs. Connecticut, 3/8/10 (@ Hartford, Conn.)
Six in double figures: see eight in double figures
Seven in double figures: see eight in double figures
Eight in double figures: Becca Bruszewski (19), Ashley Barlow (15), Skylar Diggins (14), Fraderica Miller (11), Lindsay Schrader (11), Brittany Mallory (10) and Natalie Novosel (10) vs. Arkansas-Pine Bluff, 11/15/09
ND scored 50 points/half: 51 (2nd half) vs. Morehead State, 11/15/10
ND scored 55 points/half: 55 (2nd half) vs. IPFW, 12/8/09
ND scored 60 points/half: 61 (1st half) vs. Cleveland State, 11/26/02
ND scored 100 points/BIG EAST game: 104 at Georgetown, 1/19/08
ND scored 100 points/non-BIG EAST game: see 100 points/home game
ND scored 100 points/home game: 102 vs. Arkansas-Pine Bluff, 11/15/09
ND scored fewer than 15 points/half: 11 (1st half) at West Virginia, 1/13/08
ND scored fewer than 20 points/half: 19 (1st half) at Connecticut, 1/16/10
ND scored fewer than 50 points/game: 44 vs. Connecticut, 3/8/10 (@ Hartford, Conn.)

FIELD GOAL SHOOTING

Player made every shot from the field (min. 7): Crystal Erwin (9-9) vs. Washington, 12/11/04
ND shot 55 percent/game: 56.5 (35-62) vs. Louisville, 3/6/10 (@ Hartford, Conn.)
ND shot 55 percent/consecutive games: 64.6 (42-65) at Boston College, 11/23/08; and 56.1 (32-57) vs. Georgia Southern, 11/25/08
ND shot 60 percent/game: 64.6 (42-65) at Boston College, 11/23/08
ND shot 65 percent/game: 68.0 (34-50) vs. Boston College, 2/12/97
ND shot 70 percent/game: 70.2 (40-57) vs. Xavier, 2/9/85
ND shot below 25 percent/game: 24.5 (13-53) at West Virginia, 1/13/08
ND shot below 30 percent/game: 26.9 (18-67) at Connecticut, 1/16/10
ND shot below 35 percent/game: 31.3 (20-64) vs. Connecticut, 3/8/10 (@ Hartford, Conn.)
ND shot below 35 percent/game and won: 33.8 (22-65) at Michigan State, 11/19/09
ND shot 55 percent/half: 55.9 (19-34), 2nd half vs. Morehead State, 11/15/10
ND shot 60 percent/half: 61.8 (21-34), 2nd half vs. Cleveland State, 3/21/10
ND shot 65 percent/half: 66.7 (18-27), 2nd half vs. Georgetown, 1/10/09
ND shot 70 percent/half: 71.0 (22-31), 2nd half at Boston College, 11/23/08
ND shot 55 percent/both halves: 57.1 (16-28) and 58.3 (21-36) vs. IPFW, 12/8/09
ND shot below 25 percent/half: 22.9 (8-35), 1st half at Connecticut, 1/16/10
ND shot below 30 percent/half: 9-31 (29.0), 2nd half vs. Connecticut, 3/1/10

THREE-POINT SHOOTING

Player made 4 three-pointers/half: Skylar Diggins (1st half) at Syracuse, 1/30/10
Player made 5 three-pointers/half: Kellie Watson (1st half) vs. Michigan State, 11/29/08
Player made 5 three-pointers: Ashley Barlow at Georgetown, 2/20/10
Player made 6 three-pointers: Kellie Watson vs. Michigan State, 11/29/08
Player made 7 three-pointers: Alicia Ratay at Providence, 2/16/03
Player made 8 three-pointers: Sheila McMillen vs. St. John's, 2/28/98 (@ Piscataway, N.J.)
Player attempted 10 three-pointers: 12 by Ashley Barlow at Syracuse, 1/30/10
ND made 10 three-pointers: 10 at Syracuse, 1/30/10
ND did not make a three-pointer: at Seton Hall, 1/3/09
ND attempted 20 three-pointers: 20 vs. Marquette, 2/23/10
ND shot 60 percent 3FG (min. 5 att.): 87.5 (7-8) at Boston College, 11/23/08

FREE THROW SHOOTING

Player made 10 for 10 or better: 12-12 by Charel Allen vs. Oklahoma, 3/25/08 (@ West Lafayette, Ind.)
ND shot 90 percent (min. 10 att.): 91.7 (11-12) vs. Evansville, 11/19/08
ND shot below 50 percent (min. 10 att.): 33.3 (4-12) vs. Cincinnati, 1/31/09
ND made 30 free throws: 30 (attempted 35) at South Florida, 2/17/09
ND made fewer than five FTs: 2 (attempted 2) vs. Connecticut, 3/8/10 (@ Hartford, Conn.)
ND attempted 40 free throws: 40 (made 25) at Eastern Michigan, 12/2/08
ND attempted fewer than 5 FTs: 2 (made 2) vs. Connecticut, 3/8/10 (@ Hartford, Conn.)

REBOUNDS

Player had 15 rebounds: Lindsay Schrader (15) vs. Cincinnati, 1/31/09
Player had 20 rebounds: Heidi Bunek (20) at DePaul, 1/20/88
Two players had double-figure rebounds: Lindsay Schrader (13) and Ashley Barlow (11) vs. South Florida, 1/12/10
Three players had double-figure rebounds: Katryna Gaither (14), Beth Morgan (11) and Carey Poor (10) at Michigan State, 12/21/95
ND had 60 rebounds: 60 at Eastern Michigan, 12/2/08
ND had 20 offensive rebounds: 22 vs. New Hampshire, 11/15/10
ND had 25 offensive rebounds: 26 vs. Vanderbilt, 12/31/09

DOUBLE-DOUBLES

Points & rebounds: Becca Bruszewski (12/13) vs. UCLA, 11/18/10

Points & rebounds/consecutive games: Lindsay Schrader (12/10) at Louisville, 1/19/10; (16/12) vs. West Virginia, 1/24/10
Points & rebounds/3 consecutive games: Jacqueline Batteast (17/11) vs. Missouri State, 3/21/04; (27/12) vs. Middle Tennessee, 3/23/04; (22/12) vs. Penn State, 3/27/04 (@ Hartford, Conn.)
Points & rebounds/4 consecutive games: Jacqueline Batteast (14/11) vs. Virginia Tech, 1/10/04; (23/11) vs. Connecticut, 1/13/04; (22/10) at West Virginia, 1/17/04; (12/10) at Syracuse, 1/21/04
Points & rebounds/5 consecutive games: Jacqueline Batteast (20/10) vs. Western Michigan, 12/12/01; (11/12) vs. Marquette, 12/22/01; (23/10) at Rice, 12/28/01; (25/14) vs. DePaul, 12/31/01; (12/13) at Miami (Fla.), 1/2/02
Points & assists: Megan Duffy (12/10) vs. West Virginia, 2/26/05
Points & assists/consecutive games: Niele Ivey (12/10) at Valparaiso, 11/17/00; (14/11) vs. Arizona, 11/20/00
Two players had double-doubles: Ashley Barlow (20p/12r) and Charel Allen (14p/11r) vs. SMU, 3/23/08 (@ West Lafayette, Ind.)
Three players had double-doubles: Crystal Erwin (14p/10r), Megan Duffy (14p/10a) and Jacqueline Batteast (10p/10r) vs. St. John's, 1/26/05
15 points and 15 rebounds: Lindsay Schrader (19/15) vs. Cincinnati, 1/31/09
20 points and 10 rebounds: Skylar Diggins (23/10) vs. Pittsburgh, 2/6/10
20 points and 20 rebounds: Heidi Bunek (25/20) at DePaul, 1/20/88

TRIPLE-DOUBLES (only two in school history)

Points, rebounds, assists: Sara Liebscher (17p/12r/10a) vs. Detroit, 2/15/90
Points, assists, steals: Mary Gavin (11p/14a/10s) vs. Marquette, 1/31/87

ASSISTS

Player had 10 assists: Megan Duffy vs. West Virginia, 2/26/05
Player had 10 assists/consecutive games: Megan Duffy (11 vs. Rutgers, 1/23/05; 10 vs. St. John's, 1/26/05)
Player had 15 assists: Mary Gavin (17) at Marquette, 2/28/87
ND had 30 assists: 31 vs. Arkansas-Pine Bluff, 11/15/09
ND had fewer than 10 assists: 6 vs. Connecticut, 3/8/10 (@ Hartford, Conn.)
ND had fewer than 5 assists: 3 vs. Villanova, 3/8/09 (@ Hartford, Conn.)

BLOCKED SHOTS

Player blocked 5 shots: see blocked 6 shots
Player blocked 6 shots: Devreaux Peters at St. John's, 2/16/10
Player blocked 10 shots: Amanda Barksdale (11) vs. Boston College, 2/10/02
ND blocked 10 shots: 10 at St. John's, 2/16/10
ND blocked 15 shots: 16 vs. Boston College, 2/10/02
ND blocked 0 shots: vs. Villanova, 1/9/10

STEALS

Player had 7 steals: Natalie Novosel vs. New Hampshire, 11/12/10
Player had 8 steals: Ashley Barlow vs. Cincinnati, 1/31/09
ND had 20 steals: 26 vs. Morehead State, 11/15/10

TURNOVERS

ND committed 25 or more: 27 vs. UCLA, 11/18/10
ND committed 25 or more and won: 26 vs. Charlotte, 12/20/09
ND committed 30 or more: 30 at Colorado, 11/15/03
ND committed fewer than 10: 9 vs. Pittsburgh, 2/6/10
ND committed fewer than 10/consecutive games: 9 at Purdue, 1/4/10; 9 vs. Villanova, 1/9/10
ND committed fewer than 5: 3 at Maryland, 11/16/07

MISCELLANEOUS

Led ND in points/rebounds/assists: Skylar Diggins (23p/10r/6a) vs. Pittsburgh, 2/6/10
Hit "final minute" game-winning shot: Ashley Barlow (3FG/0:34.2 2nd) at Syracuse, 1/30/10
Four-point play: Ashley Barlow (0:08.4, 1st half) at Syracuse, 1/30/10
Made shot from midcourt or beyond: Breona Gray (48 feet at 0:00, 1st half) at Seton Hall, 1/2/07
Played every minute: Melissa Lechlitner vs. St. John's, 1/17/09
Played more than 40 minutes: 47 by Skylar Diggins vs. UCLA, 11/18/10
ND rallied from a 10-point deficit to win: trailed vs. Vermont, 10-20 with 11:37 left in 1st half and won, 84-66, 3/23/10
ND rallied from a 15-point deficit to win: trailed at Vanderbilt, 28-46 with 15:56 to play and won, 59-57, 12/30/08
ND scored 20 straight points: see scored 25 straight points
ND scored 25 straight points: 28-0 run vs. New Hampshire, 11/12/10

OVERTIME

ND played an OT game: see played two overtimes
ND played two overtimes: vs. UCLA (L, 86-83), 11/18/10
ND won an OT game: vs. Oklahoma (79-75), 3/25/08 (@ West Lafayette, Ind.)
ND won an OT game at home: vs. Bowling Green (85-81), 11/13/06
ND won an OT game on the road: at Bowling Green (86-84), 12/5/07
ND lost an OT game: see played two overtimes

RANKINGS

Played the No. 1 team in the AP poll: lost vs. Connecticut (59-44), 3/8/10 (@ Hartford, Conn.)
Played the No. 1 team in the ESPN/USA Today/WBCA poll: see played No. 1 team in AP poll
Defeated top-10 opponent: vs. #10/9 Purdue (67-58), 12/6/06
Defeated top-10 opponent on the road: at #9/10 Connecticut (65-59), 1/30/05
Defeated top-10 opponent by double digits: vs. #6/7 Rutgers (63-47), 1/23/05





The Last Time An Opponent...

SCORING

Player scored 25 points: see 30 points

Player scored 30 points: Kailey Klein (31), Cleveland State, 3/21/10

Player scored 35 points: Angela Simpson (37), Northwestern State, 3/24/95 (@ Amarillo, Texas)

Two players scored 20 points: Nyeshia Stevenson (21) and Abi Olajuwon (20), Oklahoma, 3/28/10 (@ Kansas City, Mo.)

Three players scored 20 points: Angela Simpson (37), Bridgette Williams (24) and Stephanie Shaw (22), Northwestern State, 3/24/95 (@ Amarillo, Texas)

Two players scored 25 points: Jene Morris (32) and Quenese Davis (25), San Diego State, 11/26/09 (@ St. Thomas, U.S. Virgin Islands)

None in double figures: Georgia Southern, 11/25/08 (three with eight points)

One in double figures: Chynna Bozeman (12), Morehead State, 11/15/10

Five in double figures: Jasmine Dixon (18), Darxia Morris (17), Markel Walker (16), Rebekah Gardner (12) and Atonye Nyingifa (11), UCLA, 11/18/10

Six in double figures: Jannon Roland (21), Danielle McCulley (14), Jennifer Jacoby (12), Stacey Lovelace (12), Nicole Erickson (11) and Shannon Lindsey (11), Purdue, 11/30/94

Scored 50 points/half: 50 (2nd half), San Diego State, 11/26/09 (@ St. Thomas, U.S. Virgin Islands)

Scored 55 points/half: see 60 points/half

Scored 60 points/half: 63 (2nd half), Northwestern State, 3/24/95 (@ Amarillo, Texas)

Scored 100 points/BIG EAST game: 106, Connecticut, 12/8/98

Scored 100 points/non-BIG EAST game: 103, Northwestern State, 3/24/95 (@ Amarillo, Texas)

Scored fewer than 15 points/half: 7 (1st half), Morehead State, 11/15/10

Scored fewer than 20 points/half: see fewer than 15 points/half

Scored fewer than 40 points/game: 28, Morehead State, 11/15/10

FIELD GOAL SHOOTING

Shot 50 percent/game: 51.4 (19-37), New Hampshire, 11/12/10

Shot 55 percent/game: 55.6 (30-54), Connecticut, 3/1/10

Shot 60 percent/game: 60.0 (30-50), DePaul, 1/22/08

Shot below 25 percent/game: 17.5 (7-40), Morehead State, 11/15/10

Shot below 30 percent/game: see below 25 percent/game

Shot 50 percent/half: see 55 percent/half

Shot 55 percent/half: see 60 percent/half

Shot 60 percent/half: 70.0 (14-20), 2nd half by New Hampshire, 11/12/10

Shot 50 percent/both halves: 51.9 (14-27) and 59.3 (16-27), Connecticut, 3/1/10

Shot below 20 percent/half: 11.1 (2-18), 1st half by Morehead State, 11/15/10

Shot below 25 percent/half: 22.7 (5-22), 2nd half by Morehead State, 11/15/10

Shot below 30 percent/half: see below 25 percent/half

Shot below 30 percent/both halves: 11.1 (2-18) and 22.7 (5-22) by Morehead State, 11/15/10

THREE-POINT SHOOTING

Player made 5 three-pointers: Nyeshia Stevenson, Oklahoma, 3/28/10 (@ Kansas City, Mo.)

Player made 6 three-pointers: Anne Boese, IPFW, 12/8/09

Player made 7 three-pointers: Angie Bjorklund, Tennessee, 1/5/08

Player attempted 10 three-pointers: Maya Moore (10), Connecticut, 3/8/10 (@ Hartford, Conn.)

Made 10 three-pointers: 11 by IPFW, 12/8/09

Did not make a three-pointer: 0 at LSU, 11/16/08

Shot 50 percent 3FG (min. 5 att.): 50.0 (7-14) by Oklahoma, 3/28/10 (@ Kansas City, Mo.)

Shot 60 percent 3FG (min. 5 att.): 60.0 (9-15) by West Virginia, 1/24/10

FREE THROW SHOOTING

Player made 10 free throws: Adria Crawford (10) at Georgetown, 2/20/10

Player made 15 free throws: Nok Duany (15) at Georgetown, 2/23/02

Player attempted 15 free throws: Candace Parker (17), Tennessee, 3/30/08 (@ Oklahoma City, Okla.)

Player made 10 for 10 or better: Epiphany Prince (12-12), Rutgers, 1/27/09

Shot 90 percent (min. 10 att.): 90.9 (10-11) by Oklahoma, 3/28/10 (@ Kansas City, Mo.)

Shot below 50 percent (min. 10 att.): 48.0 (12-25) by Morehead State, 11/15/10

Made 30 free throws: 32 (attempted 37) by Illinois, 11/24/98

Made fewer than five FTs: 3 (attempted 10), Connecticut, 3/8/10 (@ Hartford, Conn.)

Attempted 40 free throws: 45 (made 28) at South Florida, 1/13/07

Attempted fewer than 5 FTs: 4 (made 3) at Seton Hall, 2/27/10

REBOUNDS

Player had 15 rebounds: Tina Charles (17), Connecticut, 3/8/10 (@ Hartford, Conn.)

Player had 20 rebounds: Wendy Scholtens (20) at Vanderbilt, 1/8/89

Two players had double-figure rebounds: Abi Olajuwon (14) and Amanda Thompson (11), Oklahoma, 3/28/10 (@ Kansas City, Mo.)

Three players had double-figure rebounds: Aurora Adams (16), Brenda McCunn (11) and Paula Langseth (10), Hawaii, 3/22/81 (@ Anchorage, Alaska)

Had 50 rebounds: 56 by Pittsburgh, 2/10/08

Out-rebounded ND by 10 or more: 11 by Oklahoma, 3/28/10 (@ Kansas City, Mo.) (OU 44, ND 33)

DOUBLE-DOUBLES

Points & rebounds: Jasmine Dixon (18/11), UCLA, 11/18/10

Points & assists: Liad Suez-Karni (14/10), Villanova, 2/7/06

Two players had double-doubles: Abi Olajuwon (20/14) and Amanda Thompson (13/11), Oklahoma, 3/28/10 (@ Kansas City, Mo.)

Three players had double-doubles: Mary Raese (24p/10r), Mary Westerwelle (11p/10r) and Netra McGrew (10p/10a), Idaho, 3/21/86 (@ Amarillo, Texas)

15 points and 15 rebounds: Tina Charles (16/17), Connecticut, 3/8/10 (@ Hartford, Conn.)

20 points and 10 rebounds: Abi Olajuwon (20/14), Oklahoma, 3/28/10 (@ Kansas City, Mo.)

20 points and 20 rebounds: Wendy Scholtens (29/20) at Vanderbilt, 1/8/89

TRIPLE-DOUBLES

Points, rebounds, assists: Liad Suez-Karni (14p/10r/10a), Villanova, 2/7/06

Points, rebounds, steals: Diana Vines (23p/11r/12s) at DePaul, 1/24/89

ASSISTS

Player had 10 assists: Ketia Swanier (11), Connecticut, 1/27/08

Player had 15 assists: Veronica Pettry (16) at Loyola-Chicago, 2/18/89

Had 25 assists: 27, Connecticut, 3/2/99 (@ Piscataway, N.J.)

Had 30 assists: 30 at Loyola-Chicago, 2/18/89

Had fewer than 10 assists: 7 at Seton Hall, 2/27/10

BLOCKED SHOTS

Player blocked 5 shots: Courtney Paris (5), Oklahoma, 3/25/08 (@ West Lafayette, Ind.)

Blocked 10 shots: see blocked 15 shots

Blocked 15 shots: 16 at Connecticut, 1/27/07

Blocked 0 shots: St. John's, 3/7/10 (@ Hartford, Conn.)

STEALS

Player had 5 steals: see 7 steals

Player had 7 steals: Courtnay Pilypaitis, Vermont, 3/23/10

Player had 10 steals: Katie Smrcka-Duffy, Georgetown, 1/29/00

Had 15 steals: 15, UCLA, 11/18/10

Had 20 steals: 24, Georgetown, 1/29/00

TURNOVERS

Player committed 10 turnovers: Chynna Bozeman, Morehead State, 11/15/10

Committed 20 turnovers or more and won: 20 at Marquette, 1/13/09

Committed 25 turnovers or more: 26 by UCLA, 11/18/10

Committed 30 turnovers or more: see 40 turnovers or more

Committed 35 turnovers or more: see 40 turnovers or more

Committed 40 turnovers or more: 40, Morehead State, 11/15/10

Committed 5 turnovers or fewer: 5 at Villanova, 1/25/03

Committed 10 turnovers or fewer: 10, Georgetown, 2/20/10

MISCELLANEOUS

Led team in points/rebounds/assists: Angel Robinson (19p/9r/6a) at Marquette, 1/13/09

Hit "final minute" game-winning shot: Nyeshia Stevenson (3-point jumper/0:04), Oklahoma, 3/28/10 (@ Kansas City, Mo.)

Played every minute: Danielle Robinson & Nyeshia Stevenson (45), Oklahoma, 3/28/10 (@ Kansas City, Mo.)

Played more than 40 minutes: Danielle Robinson & Nyeshia Stevenson (45), Oklahoma, 3/28/10 (@ Kansas City, Mo.)

Rallied from a 10-point deficit to win: Villanova, 3/8/09 (ND led 15-5 with 9:18 left in 1st half, VU won 58-47) (@ Hartford, Conn.)

Led ND by 10 or more at halftime: 13 by Connecticut (36-23), 3/1/10

Led ND by 15 or more at halftime: 23 at Connecticut (42-19), 1/16/10

Led ND by 25 or more points: 30 by Connecticut (71-41 at 2:58 of 2nd half), 3/1/10

SCORING MARGINS — The Last Time...

ND won by 30-plus points: see 60

ND won by 30-plus points at home: see 60

ND won by 30-plus points on the road: 33 — ND 85, at UCF 52, 12/29/09

ND won by 40-plus points: see 60

ND won by 50-plus points: see 60

ND won by 60-plus points: 63 — ND 91, Morehead State 28, 11/15/10

ND lost by 10-19 points: 15 — Connecticut 59, ND 44, 3/8/10 (@ Hartford, Conn.)

ND lost by 10-19 points at home: 10 — Rutgers 78, at ND 68, 1/27/09

ND lost by 10-19 points on the road: 10 — at Georgetown 76, ND 66, 2/20/10

ND lost by 20-29 points: 25 — Connecticut 76, at ND 51, 3/1/10

ND lost by 20-29 points on the road: 24 — at Connecticut 70, ND 46, 1/16/10

ND lost by 30-plus points: 39 — at Tennessee 89, ND 50, 3/17/02

Head Coach Muffet McGraw

24th season at ND (527-204, .721) • 28th season overall (615-245, .715)

"If we searched for an entire year, I don't think we would find anyone better suited for our program."

With those words, former Notre Dame athletics director **Gene Corrigan** announced the hiring of **Muffet McGraw** as the third head coach of the Irish women's basketball program on May 18, 1987. Corrigan may not have realized it at the time, but he also ushered in an era of unparalleled success in women's basketball at Notre Dame, brought to life on the shoulders of a 5-foot-6 dynamo who accepts nothing less than the very best from herself, her players and her program.

Ask anyone familiar with women's basketball about McGraw and her Notre Dame program and inevitably, you'll hear the same two words — consistency and excellence. And it's no wonder, when you consider what McGraw and the Irish have achieved in the past 23 seasons:

- The 2001 NCAA Championship, defeating Purdue in the title game, 68-66. McGraw is one of only eight active Division I coaches to guide her team to a national title.
- Two trips to the NCAA Final Four (1997 and 2001). McGraw is one of just 15 active Division I coaches to lead her team to multiple Final Four appearances.
- Eight NCAA Sweet 16 trips, all in the past 14 seasons (1997-2010). The Irish are one of only 10 programs in the nation that can make that claim.
- 20 seasons with 20-or-more victories, including 16 in the past 17 years (1993-2010). Notre Dame also has posted seven 25-win seasons and two 30-win campaigns in the past 14 years (1997-2010).
- 17 NCAA Tournament appearances, including a current string of 15 consecutive NCAA Tournament berths. During the first 15 years of this current streak (1996-2010), Notre Dame has won at least one NCAA postseason game 13 times.
- 66 wins over ranked opponents, including 56 in the past 12-plus seasons alone (1998-2011). In addition, 20 of those wins have come against top-10 opponents.
- 199 appearances in the Associated Press Top 25 poll, putting McGraw 13th among active Division I coaches and 22nd all-time on that list (through the Nov. 15, 2010 poll). Notre Dame also has spent 95 weeks ranked among the top 10 teams in the nation, all in the past 13-plus seasons (1997-2011).
- 12 top-four finishes in the BIG EAST Conference during Notre Dame's first 15 years in that league (1995-96 through 2009-10). The Irish also won a share of the 2001 BIG EAST regular-season title.
- 15 consecutive top-20 recruiting classes, dating to the incoming class of 1997. Notre Dame is one of just three programs in the nation that owns an active streak of that length.
- Ranks among the top 20 active NCAA Division I coaches with 615 career wins (reaching the 600-win milestone on Jan. 19, 2010, at Louisville in her 839th game, tying for 10th-fastest to 600 wins in Division I history) and a .716 all-time winning percentage.
- One of only five coaches in the 124-year history of Fighting Irish athletics to win 500 games at Notre Dame, joining fencing's **Michael DeCicco** and **Yves Auriol**, men's tennis/wrestling coach **Tom Fallon** and baseball's **Jake Kline**.
- Far and away the winningest basketball coach (men's or women's) in school history, with noted men's skipper **Richard "Digger" Phelps** second on that list (393 wins).
- A perfect 100-percent graduation rate for all players entering the program since 1987 who have completed their athletic and academic eligibility at Notre Dame (a spotless 62-for-62 success rate). The Irish have posted a perfect 100-percent NCAA Graduation Success Rate (GSR) score in each of the past four years, and they are one of only five programs in the country to combine a perfect GSR score with a trip to the NCAA Sweet 16 twice within the past three seasons (2008 and 2010).

Add it all up and you have the framework for a Hall of Fame career. And, on July 10, 2010, that's exactly what McGraw became, as she was named to the six-person Women's Basketball Hall of Fame Class of 2011. McGraw officially will become the Hall's first Notre Dame representative when she is inducted during Enshrinement Weekend activities June 10-12, 2011, in Knoxville, Tenn.

Still, with all of those accomplishments in hand, McGraw has shown no signs of slowing down any time soon. In July 2008, the veteran head coach signed a contract extension that will keep her parrotling the Irish sidelines through the 2014-15 campaign.

"For more than 20 years, Muffet has led our program with integrity and passion, and, of course, to much success," said **Rev. John I. Jenkins, C.S.C.**, Notre Dame's president. "As we look forward to many more years together, I am confident that the excellence she has achieved on and off the court will continue."

Under McGraw's guidance, the past 15 seasons (1995-96 to 2009-10) have been the most successful in Notre Dame's history. The Irish have compiled an impressive 366-123 (.748) record, including a sparkling 188-60 (.758) regular-season mark in BIG EAST play, the second-best winning percentage in league history. Notre Dame also has averaged more than 24 victories per year during that span, with two 30-win seasons and seven 25-win campaigns to its credit. The Irish have won at least one NCAA Tournament game 13 times in the past 15 years, advancing to the Sweet 16 eight times (1997, 1998, 2000, 2001, 2003, 2004, 2008, 2010) and the Final Four twice (1997 and 2001).

Success for McGraw also has meant coaching great players. During her illustrious career, the Notre Dame skipper has coached 11 All-Americans, including 2001 consensus National Player of the Year **Ruth Riley**. She also has worked with five players who have been selected for USA Basketball National Teams, with those players going on to win a total of nine medals (highlighted by Riley's gold with the '04 U.S. Olympic Team). In addition, McGraw has coached 22 players who have earned all-conference recognition a total of 48 times, including 15 first-team picks who have been chosen a total of 27 times, and has helped shape several other national award winners, namely two Frances Pomeroy Naismith award recipients (**Niele Ivey** in 2001, **Megan Duffy** in 2006) and 2002 United States Basketball Writers Association (USBWA) National Freshman of the Year **Jacqueline Batteast**.

Another sign of McGraw's success has been her ability to prepare her players for the next level. No less than 21 Notre Dame cagers have gone on to play professionally (domestically or overseas), including nine who either have been drafted or signed as free agents with WNBA teams. The past decade has seen the greatest influx of Irish talent into the WNBA, with seven Notre Dame players having been selected in the league's annual draft since 2001. Four of those players — Riley, Ivey, **Kelley Siemon** and **Ericka Haney** — were starters on the '01 Irish NCAA championship team, and five of the recent Irish WNBA draftees (Riley, Ivey, Batteast, Duffy and **Charel Allen**) earned All-America status during their careers at Notre Dame.

Dedicated to helping grow and further the sport in any way possible, McGraw has groomed 10 of her former players and/or assistant coaches who currently are serving as coaches at either the high school or college level. Of those 10 proteges, five presently are Division I head coaches — 1988 Notre Dame graduate **Sandy Botham** (Wisconsin-Milwaukee), 1997 Notre Dame graduate and the school's all-time leading scorer **Beth (Morgan) Cunningham** (Virginia Commonwealth), **Bill Fennelly** (Iowa State), **Kevin McGuff** (Xavier) and 1991 Notre Dame graduate **Coquese Washington** (Penn State). McGuff and Washington (along with current Irish associate coach **Carol Owens**) comprised McGraw's assistant coaching staff on the 2001 Irish NCAA national championship squad, while McGuff and Owens also were on staff for Notre Dame's run to the 1997 NCAA Final Four.

A native of West Chester, Pa., McGraw received her bachelor's degree in sociology from Saint Joseph's University (Pa.) in 1977. Following graduation, she coached for two seasons at Philadelphia's Archbishop Carroll High School (50-3 record) and two more at her alma mater as an assistant coach under **Jim Foster** (now the head coach at Ohio State). In 1982, McGraw was named head coach at Lehigh University, her teams finishing 88-41 (.683) during her five-year tenure.

McGraw and her husband, **Matt**, celebrated their 33rd wedding anniversary in 2010 and make their home in Granger, Ind. They are the proud parents of 20-year-old son **Murphy**, who is a junior at Indiana University.



Women's Basketball Hall of Fame, 2011

Consensus National Coach of the Year, 2001

Naismith National Coach of the Year Finalist, 1997, 1998, 2001, 2005

Conference Coach of the Year, 1983, 1988, 1991, 2001

NCAA National Champion, 2001

NCAA Final Four 1997, 2001

NCAA Tournament 1992, 1994, 1996-2010

NIT 1989, 1991, 1995

NOTE: McGraw's complete bio, including year-by-year records/results can be found on 72-77 of this year's Notre Dame women's basketball media guide.



#1 Erica Solomon

Forward • 6-2 • Jr.-1V

Charleston, W.Va. (Detroit (Mich.) Country Day School)

Did You Know?

- ◆ Nickname is "Roc" after her middle name (Raquel).
- ◆ Graduated from same high school that produced NBA standouts Chris Webber and Shane Battier, as well as former Irish All-America women's soccer player/two-time U.S. Olympic gold medalist Kate (Sobrero) Markgraf, among others.
- ◆ One of nine Irish players who also competed in another sport in high school — successful high jumper, setting school record with a 5'-6" jump.

◆ Ranks 10th in school history with 1.05 career blocks average.

2010-11 Highlights

◆ Led Irish reserves with 11 points (4-6 FG, 3-3 FT) in season opener against New Hampshire; was first double-figure scoring game since Feb. 17, 2009, at South Florida (10 points).

◆ Chipped in seven points against Morehead State while tying career highs with three assists and three steals.

Career Highs

Points
15 at Boston College (11/23/08)

Rebounds
10 at Villanova (1/24/09)

Assists
3 vs. Morehead State (11/15/10)

Field Goals
6 at Pittsburgh (2/3/09)

Field Goal Attempts
11 at Pittsburgh (2/3/09)

3-Point Field Goals
None

3-Point Field Goal Attempts
1 vs. Charlotte (12/20/09)

Free Throws
6, twice (MR: at EMU, 12/2/08)

Free Throw Attempts
10 at Eastern Michigan (12/2/08)

Steals
3, twice (MR: vs. Morehead St., 11/15/10)

Blocked Shots
4 at Eastern Michigan (12/2/08)

Minutes Played
24, twice (MR: at USF, 2/17/09)

Miscellaneous

Double-doubles0
Double-figure scoring games ...8
20-point games.....0
Double-figure rebound games....1
5-block games0
5-steal games.....0

Solomon Game-by-Game

Opponent	Date	GS	Min	FG	FGA	Pct	3FG	FGA	Pct	FT	FTA	Pct	Off	Def	Tot	Avg	PF	FO	A	TO	Blk	Stl	Pts	Avg
NEW HAMPSHIRE	11/12/10		14	4	6	.667	0	0	.000	3	3	1.000	0	1	1	1.0	2	0	0	2	0	2	11	11.0
MOREHEAD STATE	11/15/10		16	2	5	.400	0	0	.000	3	4	.750	1	0	1	1.0	2	0	3	2	1	3	7	9.0
UCLA	11/18/10		10	1	2	.500	0	0	.000	1	2	.500	0	2	2	1.3	2	0	0	3	1	2	3	7.0
at Kentucky	11/21/10		9	1	3	.333	0	0	.000	0	0	.000	1	2	3	1.8	0	0	0	1	1	0	2	5.8
TOTAL			0	49	8	.500	0	0	.000	7	9	.778	2	5	7	1.8	6	0	3	8	3	7	23	5.8

Solomon's Career Statistics — All Games

Year	GP	GS	Min	Avg	FG	FGA	Pct	FG	FGA	Pct	FT	FTA	Pct	Off	Def	Tot	Avg	PF	FO	Ast	TO	Blk	Stl	Pts	Avg
2008-09	31	0	512	16.5	66	154	.429	0	0	.000	53	86	.616	70	68	138	4.5	75	0	21	44	38	17	185	6.0
2009-10	11	0	107	9.7	12	31	.387	0	1	.000	13	19	.684	7	7	14	1.3	18	0	10	9	7	7	37	3.4
2010-11	4	0	49	12.3	8	16	.500	0	0	.000	7	9	.778	2	5	7	1.8	6	0	3	8	3	7	23	5.8
TOTAL	46	0	668	14.5	86	201	.428	0	1	.000	73	114	.640	79	80	159	3.5	99	0	34	61	48	31	245	5.3

Solomon's Career Statistics — BIG EAST Games

Year	GP	GS	Min	Avg	FG	FGA	Pct	FG	FGA	Pct	FT	FTA	Pct	Off	Def	Tot	Avg	PF	FO	Ast	TO	Blk	Stl	Pts	Avg
2008-09	16	0	260	16.3	33	73	.452	0	0	.000	18	35	.514	39	33	72	4.5	50	0	10	26	20	8	84	5.3
2009-10	1	0	10	10.0	2	4	.500	0	0	.000	0	0	.000	0	0	0	0.0	1	0	2	1	0	2	4	4.0
TOTAL	17	0	270	15.9	35	77	.455	0	0	.000	18	35	.514	39	33	72	4.2	51	0	12	27	20	10	88	5.2



#2 Veronica Badway

Guard • 5-7 • Jr.-HS
Pittsburgh, Pa. (Fox Chapel Area)

Overview

- ◆ Officially added as a walk-on player during preseason.
- ◆ Gritty, hard-working guard who adds depth to Notre Dame roster.
- ◆ Cerebral player who makes significant contributions during practices and games.
- ◆ Nickname is "V".

High School

- ◆ Three-year starter and two-year captain at Fox Chapel Area High School in Pittsburgh, Pa.
- ◆ Averaged 9.0 points, 7.0 assists, 3.0 rebounds and 3.0 assists per game as a senior in 2007-08, leading team to the first WPIAL Class 4A sectional title.
- ◆ Played in the A-K Valley Cager Classic (all-star game) following her senior season.
- ◆ Also played for a trio of successful AAU programs in western Pennsylvania — Pennsylvania Hoopstars, Pittsburgh Press and SMAC PA Elite.
- ◆ National Honor Society member who graduated as a senior scholar and was among the top five percent in her graduating class.

Personal Data

- ◆ Born June 4, 1990, in Pittsburgh, Pa. ... second of four children (older brother Aaron, younger brother Blaise and younger sister Gabriella) born to Andrea and David Badway ... father is a 1978 graduate of Notre Dame.
- ◆ One of three Pennsylvania residents on this year's Fighting Irish roster, joining freshman guard Kayla McBride (Erie) and fellow walk-on, senior forward Mary Forr (Altoona).
- ◆ Enrolled in the Mendoza College of Business, as an accounting major ... dean's list honoree each semester ... recipient of Notre Dame Accountancy Excellence Scholarship ... member of Notre Dame's Beta Alpha Psi international honorary society (accounting/finance).
- ◆ Only the second Fighting Irish player ever to wear No. 2, following in the footsteps of two-time honorable mention All-America guard (and Monessen, Pa., native) Charel Allen.

2010-11 Highlights

- ◆ Made college debut late in season opener vs. New Hampshire, hitting a three-pointer and grabbing a rebound in four minutes.
- ◆ Also played four minutes against Morehead State, converting 1-of-2 free throws and adding a steal.

Career Highs

Points
 3 vs. New Hampshire (11/12/10)

Rebounds
 1 vs. New Hampshire (11/12/10)

Assists
 None

Field Goals
 1 vs. New Hampshire (11/12/10)

Field Goal Attempts
 1 vs. New Hampshire (11/12/10)

3-Point Field Goals
 1 vs. New Hampshire (11/12/10)

3-Point Field Goal Attempts
 1 vs. New Hampshire (11/12/10)

Free Throws
 1 vs. Morehead State (11/15/10)

Free Throw Attempts
 2 vs. Morehead State (11/15/10)

Steals
 1 vs. Morehead State (11/15/10)

Blocked Shots
 None

Minutes Played
 4, twice (MR: vs. Morehead St., 11/15/10)

Miscellaneous

Double-doubles0
 Double-figure scoring games ...0
 20-point games.....0
 Double-figure rebound games....0
 5-assist games0
 5-steal games.....0

Badway Game-by-Game

Opponent	Date	GS	Min	FG	FGA	Pct	3FG	FGA	Pct	FT	FTA	Pct	Off	Def	Tot	Avg	PF	FO	A	TO	Blk	Stl	Pts	Avg
NEW HAMPSHIRE	11/12/10	4	1	1	1.000	1	1	1.000	0	0	.000	0	1	1	1.0	0	0	0	1	0	0	3	3.0	
MOREHEAD STATE	11/15/10	4	0	0	.000	0	0	.000	1	2	.500	0	0	0	0.5	1	0	0	0	0	1	1	2.0	
TOTAL		0	8	1	1	1.000	1	1	1.000	1	2	.500	0	1	1	0.5	1	0	0	1	0	1	4	2.0

Badway's Career Statistics — All Games

Year	GP	GS	Min	Avg	FG	FGA	Pct	FG	FGA	Pct	FT	FTA	Pct	Off	Def	Tot	Avg	PF	FO	Ast	TO	Blk	Stl	Pts	Avg
2010-11	2	0	8	4.0	1	1	1.000	1	1	1.000	1	2	.500	0	1	1	0.5	1	0	0	1	0	1	4	2.0
TOTAL	2	0	8	4.0	1	1	1.000	1	1	1.000	1	2	.500	0	1	1	0.5	1	0	0	1	0	1	4	2.0



#4 Skylar Diggins

Guard • 5-9 • So.-1V
South Bend, Ind. (Washington HS)

Did You Know?

- ◆ One of three McDonald's All-Americans (McBride, Peters) on 2010-11 Fighting Irish roster.
- ◆ Received NCAA waiver to participate in the inaugural ESPNW Retreat Sept. 30-Oct. 1, 2010, in La Jolla, Calif. ... took part in panel discussion entitled "The Future: The Journey To Becoming A World-Class Athlete", joining 16-year-old snowboard phenom Maddy Schaffrick and USA Hockey forward Kendall Coyne

for the session ... some other notable female sports figures who participated in the ESPNW Retreat included 39-time Grand Slam tennis champion and women's sports pioneer Billie Jean King, Olympic gold medalists Jennie Finch (softball), Julie Foudy (soccer), Shannon Miller (gymnastics), Jessica Mendoza (President of the Women's Sports Foundation and former Olympic softball silver medalist), champion boxer Laila Ali (daughter of the legendary Muhammad Ali), multi-time X Games champion snowboarder Gretchen Bleiler and ESPN Sportscenter anchor/1983 Notre Dame graduate Hannah Storm.

Awards/Honors

- ◆ State Farm/WBCA Wade Trophy Watch List
- ◆ Preseason John R. Wooden Award Watch List
- ◆ Preseason Naismith Trophy Watch List
- ◆ Preseason All-BIG EAST Team (*unanimous*)

2010-11 Highlights

- ◆ Collected 12 points, four assists and four steals in season opener against New Hampshire.
- ◆ Tallied nine points and game-high eight assists vs. Morehead State.
- ◆ Led all scorers with 22 points and added team-high five assists in career-best 47 minutes of double overtime loss vs. #15 UCLA.
- ◆ Went for 18 points and three boards at #9 Kentucky.

Career Highs

- Points**
31 vs. Vermont (3/23/10)
- Rebounds**
10 vs. Pittsburgh (2/6/10)
- Assists**
9 vs. Marquette (2/23/10)
- Field Goals**
13 vs. Vermont (3/23/10)
- Field Goal Attempts**
21, twice (MR: vs. UCLA, 11/18/10)
- 3-Point Field Goals**
4, twice (MR: at Syracuse, 1/30/10)
- 3-Point Field Goal Attempts**
9 at Syracuse (1/30/10)
- Free Throws**
10 at St. John's (2/16/10)
- Free Throw Attempts**
12 at St. John's (2/16/10)
- Steals**
7 vs. Vermont (3/23/10)
- Blocked Shots**
3 vs. San Diego St. (11/26/09)
- Minutes Played**
47 vs. UCLA (11/18/10)
- Miscellaneous**
 - Double-doubles 1
 - Double-figure scoring games .27
 - 20-point games 8*
 - Double-figure rebound games.... 1
 - 5-assist games 9
 - 5-steal games 3

* - includes one 30-point game

Diggins Game-by-Game

Opponent	Date	GS	Min	FG	FGA	Pct	3FG	FGA	Pct	FT	FTA	Pct	Off	Def	Tot	Avg	PF	FO	A	TO	Blk	Stl	Pts	Avg
NEW HAMPSHIRE	11/12/10	*	19	4	11	.364	0	1	.000	4	6	.667	2	0	2	2.0	1	0	4	3	0	4	12	12.0
MOREHEAD STATE	11/15/10	*	21	4	9	.444	0	1	.000	1	2	.500	2	1	3	2.5	1	0	8	2	0	2	9	10.5
UCLA	11/18/10	*	47	10	21	.476	0	4	.000	2	3	.667	0	1	1	2.0	4	0	5	6	0	3	22	14.3
at Kentucky	11/21/10	*	34	7	17	.412	0	2	.000	4	5	.800	0	3	3	2.3	4	0	1	6	1	1	18	15.3
TOTAL			4	121	25	.431	0	8	.000	11	16	.688	4	5	9	2.3	10	0	18	17	1	10	61	15.3

Diggins' Career Statistics — All Games

Year	GP	GS	Min	Avg	FG	FGA	Pct	FG	FGA	Pct	FT	FTA	Pct	Off	Def	Tot	Avg	PF	FO	Ast	TO	Blk	Stl	Pts	Avg
2009-10	35	30	1028	29.4	169	385	.439	35	100	.350	111	142	.782	48	95	143	4.1	80	0	112	97	23	90	484	13.8
2010-11	4	4	121	30.3	25	58	.431	0	8	.000	11	16	.688	4	5	9	2.3	10	0	18	17	1	10	61	15.3
TOTAL	39	34	1149	29.5	194	443	.438	35	108	.324	122	158	.772	52	100	152	3.9	90	0	130	114	24	100	545	14.0

Diggins' Career Statistics — BIG EAST Games

Year	GP	GS	Min	Avg	FG	FGA	Pct	FG	FGA	Pct	FT	FTA	Pct	Off	Def	Tot	Avg	PF	FO	Ast	TO	Blk	Stl	Pts	Avg
2009-10	16	15	479	29.9	76	172	.442	17	49	.347	53	70	.757	21	38	59	3.7	41	0	50	39	7	36	222	13.9
TOTAL	16	15	479	29.9	76	172	.442	17	49	.347	53	70	.757	21	38	59	3.7	41	0	50	39	7	36	222	13.9



#11 Natalie Achonwa

Forward • 6-3 • Fr.-HS
Guelph, Ontario (St. Mary's Catholic)

Did You Know?

- ◆ Last name is pronounced "uh-CHAWN-wuh" ... nicknames are "Ace" (shortened version of last name and/or her jersey numbers) or "Canada".
- ◆ First international player in the 34-year history of the Notre Dame women's basketball program.
- ◆ Youngest player ever to suit up for Canadian Senior National Team, doing so at age 16 in September 2009.

◆ Has already held her own against some of world's top players, facing off with three-time WNBA MVP (and Australian National Team forward) Lauren Jackson and 2010 WNBA Rookie of the Year (and USA center) Tina Charles, among others, while helping to represent Canada at the 2010 FIBA World Championships in the Czech Republic.

2010-11 Highlights

- ◆ Averaging 8.5 points, 3.5 rebounds and 3.0 assists per game with .583 field goal percentage.
- ◆ Nearly chalked up "5-5-5" game in her college debut against New Hampshire, finishing with seven points, four rebounds and game-high five assists before fouling out in 16 minutes.
- ◆ One of four Fighting Irish players in double figures against Morehead State with 10 points (5-8 FG).
- ◆ Career-high 13 boards - including eight on the offensive end - came with four points during a road loss at #9 Kentucky.

Career Highs

Points
10 vs. Morehead State (11/15/10)

Rebounds
13 at Kentucky (11/21/10)

Assists
5 vs. New Hampshire (11/12/10)

Field Goals
5 vs. Morehead State (11/15/10)

Field Goal Attempts
8 vs. Morehead State (11/15/10)

3-Point Field Goals
None

3-Point Field Goal Attempts
None

Free Throws
3 vs. New Hampshire (11/12/10)

Free Throw Attempts
4 vs. New Hampshire (11/12/10)

Steals
2, twice (MR: at Kentucky (11/21/10))

Blocked Shots
1, twice (MR: vs. UCLA, 11/18/10)

Minutes Played
28 vs. UCLA (11/18/10)

Miscellaneous

Double-doubles0
 Double-figure scoring games ...1
 20-point games.....0
 Double-figure rebound games....1
 5-block games0
 5-assist games1

Achonwa Game-by-Game

Opponent	Date	GS	Min	FG	FGA	Pct	3FG	FGA	Pct	FT	FTA	Pct	Off	Def	Tot	Avg	PF	FO	A	TO	Blk	Stl	Pts	Avg
NEW HAMPSHIRE	11/12/10	16	2	4	.500	0	0	.000	3	4	.750	2	2	4	4.0	5	1	5	2	0	2	7	7.0	
MOREHEAD STATE	11/15/10	17	5	8	.625	0	0	.000	0	1	.000	0	3	3	3.5	2	0	1	3	1	1	10	8.5	
UCLA	11/18/10	28	4	5	.800	0	0	.000	1	2	.500	3	6	9	5.3	1	0	0	6	1	0	9	8.7	
at Kentucky	11/21/10	22	2	4	.500	0	0	.000	0	0	.000	8	5	13	7.3	4	0	1	0	0	2	4	7.5	
TOTAL		0	83	13	21	.619	0	0	.000	4	7	.571	13	16	29	7.3	12	1	7	11	2	5	30	7.5

Achonwa's Career Statistics — All Games

Year	GP	GS	Min	Avg	FG	FGA	Pct	FG	FGA	Pct	FT	FTA	Pct	Off	Def	Tot	Avg	PF	FO	Ast	TO	Blk	Stl	Pts	Avg
2010-11	4	0	83	20.8	13	21	.619	0	0	.000	4	7	.571	13	16	29	7.3	12	1	7	11	2	5	30	7.5
TOTAL	4	0	83	20.8	13	21	.619	0	0	.000	4	7	.571	13	16	29	7.3	12	1	7	11	2	5	30	7.5



#12 Fraderica Miller

Guard • 5-10 • Jr.-2V
Ellenwood, Ga. (The Marist School)

Did You Know?

- ◆ First name is pronounced “fruh-DARE-uh-kuh” ... nickname is “Fred”.
- ◆ Also strong in the classroom, earning dean’s list honors in spring 2009 with 3.667 semester GPA (she is enrolled in Notre Dame’s Mendoza College of Business as an accounting major with a secondary major in film, television & theater through the College of Arts and Letters).
- ◆ One of nine Fighting Irish basketball players who also competed in another sport in high school — ran track & field, competing primarily in sprints (100m/200m/400m).

2010-11 Highlights

- ◆ Tied for fourth on team with eight steals (2.7 spg.) this season.
- ◆ Nabbed three steals, two rebounds and two assists in season opener against New Hampshire.
- ◆ Nearly tallied first career “5-5-5” game with five points, career-high-tying five steals and four rebounds against Morehead State.

Career Highs

- Points**
11 vs. Ark.-Pine Bluff (11/15/09)
- Rebounds**
7 vs. Ark.-Pine Bluff (11/15/09)
- Assists**
2, six times (MR: vs. UNH, 11/12/10)
- Field Goals**
5 vs. Ark.-Pine Bluff (11/15/09)
- Field Goal Attempts**
8 vs. Ark.-Pine Bluff (11/15/09)
- 3-Point Field Goals**
None
- 3-Point Field Goal Attempts**
None
- Free Throws**
2 vs. Villanova (1/9/10)
- Free Throw Attempts**
5 vs. Loyola-Chicago (12/20/08)
- Steals**
5, twice (MR: vs. Morehead St., 11/15/10)
- Blocked Shots**
1, twice (MR: vs. IPFW, 12/8/09)
- Minutes Played**
20 vs. Ark.-Pine Bluff (11/15/09)

Miscellaneous

- Double-doubles0
- Double-figure scoring games1
- 20-point games.....0
- Double-figure assist games.....0
- 5-assist games0
- 5-steal games.....2

Miller Game-by-Game

Opponent	Date	GS	Min	FG	FGA	Pct	3FG	FGA	Pct	FT	FTA	Pct	Off	Def	Tot	Avg	PF	FO	A	TO	Blk	Stl	Pts	Avg
NEW HAMPSHIRE	11/12/10	12	0	2	.000	0	0	.000	1	2	.500	2	0	2	2.0	1	0	2	3	0	3	1	1.0	
MOREHEAD STATE	11/15/10	15	2	3	.667	0	0	.000	1	2	.500	0	4	4	3.0	1	0	1	0	0	5	5	3.0	
UCLA	11/18/10	2	0	0	.000	0	0	.000	0	0	.000	0	0	0	2.0	0	0	0	0	0	0	0	2.0	
at Kentucky	11/21/10	3	0	1	.000	0	0	.000	0	0	.000	0	0	0	1.5	2	0	0	0	0	0	0	1.5	
TOTAL		0	32	2	6	.333	0	0	.000	2	4	.500	2	4	6	1.5	4	0	3	3	0	8	6	1.5

Miller's Career Statistics — All Games

Year	GP	GS	Min	Avg	FG	FGA	Pct	FG	FGA	Pct	FT	FTA	Pct	Off	Def	Tot	Avg	PF	FO	Ast	TO	Blk	Stl	Pts	Avg
2008-09	23	0	92	4.0	8	11	.727	0	0	.000	1	5	.200	6	7	13	0.6	25	0	8	5	0	15	17	0.7
2009-10	15	0	118	7.9	16	23	.696	0	0	.000	5	10	.500	16	14	30	2.0	13	0	9	17	2	16	37	2.5
2010-11	4	0	32	8.0	2	6	.333	0	0	.000	2	4	.500	2	4	6	1.5	4	0	3	3	0	8	6	1.5
TOTAL	42	0	242	5.8	26	40	.650	0	0	.000	8	19	.421	24	25	49	1.2	42	0	20	25	2	39	60	1.4

Miller's Career Statistics — BIG EAST Games

Year	GP	GS	Min	Avg	FG	FGA	Pct	FG	FGA	Pct	FT	FTA	Pct	Off	Def	Tot	Avg	PF	FO	Ast	TO	Blk	Stl	Pts	Avg
2008-09	13	0	43	3.3	2	3	.667	0	0	.000	0	0	.000	2	4	6	0.5	10	0	5	2	0	7	4	0.3
2009-10	1	0	5	5.0	0	1	.000	0	0	.000	2	2	1.000	0	0	0	0.0	0	0	0	0	0	2	2	2.0
TOTAL	14	0	48	3.4	2	4	.500	0	0	.000	2	2	1.000	2	4	6	0.4	10	0	5	2	0	9	6	0.4



#14 Devereaux Peters

Forward • 6-2 • Sr.-3V
Chicago, Ill. (Fenwick HS)

Did You Know?

- ◆ First name pronounced “DEV-er-OH” ... nickname is “Dev”.
- ◆ Has a 77-inch (6-foot-5) wingspan.
- ◆ Peters’ alma mater, Fenwick High School in Oak Park, Ill., holds a special place in Notre Dame athletics history, having produced numerous Irish greats in several sports — the most notable is 1953 Heisman Trophy John Lattner.
- ◆ One of two Irish players who had an uncle play professional football — Peters’

uncle, Tom Seabron, played linebacker at Michigan and was a fifth-round draft pick of the San Francisco 49ers in 1979; Ashley Barlow’s uncle, Ron, was a fullback at Kansas State and was selected by the New York Jets in the 1965 America Football League redshirt draft.

- ◆ Has registered three career “5-5-5” games, including one this season (St. John’s).
- ◆ Ranks third in school history with 1.62 career blocked shots average.

2010-11 Highlights

- ◆ Made big splash in season opener vs. New Hampshire with career-high 23 points (career-high 11 FGM on 13 FGA), eight rebounds four steals and two blocks in only 16 minutes ... was her first career “point-a-minute” game.
- ◆ Collected eight points, four rebounds and four steals against Morehead State.
- ◆ Tied career high with four assists against #15 UCLA.
- ◆ Solid outing on the glass at #9 Kentucky with three boards on both the defensive and offensive ends of the court.

Career Highs

Points
 23 vs. New Hampshire (11/12/10)

Rebounds
 14 at St. John’s (2/16/10)

Assists
 4, three times (MR: vs. UCLA, 11/18/10)

Field Goals
 11 vs. New Hampshire (11/12/10)

Field Goal Attempts
 15 at Maryland (11/16/07)

3-Point Field Goals
 None

3-Point Field Goal Attempts
 1 at Syracuse (1/30/10)

Free Throws
 8 at Richmond (1/2/08)

Free Throw Attempts
 10 at Richmond (1/2/08)

Steals
 7 vs. Villanova (1/16/08)

Blocked Shots
 6 at St. John’s (2/16/10)

Minutes Played
 34 at Maryland (11/16/07)

Miscellaneous

Double-doubles1
 Double-figure scoring games ..21
 20-point games.....0
 Double-figure rebound games...2
 5-block games2
 5-steal games1

Peters Game-by-Game

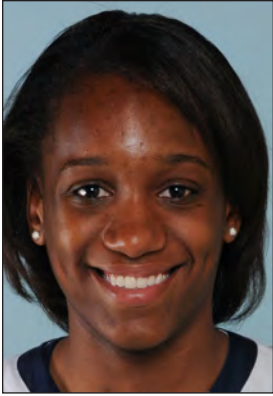
Opponent	Date	GS	Min	FG	FGA	Pct	3FG	FGA	Pct	FT	FTA	Pct	Off	Def	Tot	Avg	PF	FO	A	TO	Blk	Stl	Pts	Avg
NEW HAMPSHIRE	11/12/10	*	16	11	13	.846	0	0	.000	1	1	1.000	8	0	8	8.0	0	0	0	2	2	4	23	23.0
MOREHEAD STATE	11/15/10	*	18	3	5	.600	0	0	.000	2	3	.667	1	3	4	6.0	2	0	2	2	0	4	8	15.5
UCLA	11/18/10	*	18	1	9	.111	0	0	.000	1	2	.500	2	0	2	4.7	3	0	4	2	0	1	3	11.3
at Kentucky	11/21/10	*	13	1	3	.333	0	0	.000	0	0	.000	3	3	6	5.0	5	1	1	1	1	0	2	9.0
TOTAL			4	65	16	.533	0	0	.000	4	6	.667	14	6	20	5.0	10	1	7	7	3	9	36	9.0

Peters' Career Statistics — All Games

Year	GP	GS	Min	Avg	FG	FGA	Pct	FG	FGA	Pct	FT	FTA	Pct	Off	Def	Tot	Avg	PF	FO	Ast	TO	Blk	Stl	Pts	Avg
2007-08	23	2	468	20.3	82	157	.522	0	0	.000	42	56	.750	57	72	129	5.6	78	5	23	40	45	39	206	9.0
2008-09	3	1	61	20.3	11	16	.688	0	0	.000	0	3	.000	3	10	13	4.3	6	0	5	4	6	5	22	7.3
2009-10	25	0	455	18.2	67	139	.482	0	1	.000	33	60	.550	48	91	139	5.6	69	0	27	30	30	34	167	6.7
2010-11	4	4	65	16.3	16	30	.533	0	0	.000	4	6	.667	14	6	20	5.0	10	1	7	7	3	9	36	9.0
TOTAL	55	7	1049	19.1	176	342	.515	0	1	.000	79	125	.632	122	179	301	5.5	163	6	62	81	84	87	431	7.8

Peters' Career Statistics — BIG EAST Games

Year	GP	GS	Min	Avg	FG	FGA	Pct	FG	FGA	Pct	FT	FTA	Pct	Off	Def	Tot	Avg	PF	FO	Ast	TO	Blk	Stl	Pts	Avg
2007-08	9	2	161	17.9	30	58	.517	0	0	.000	22	29	.759	18	34	52	5.8	37	4	8	15	13	16	82	9.1
2009-10	16	0	297	18.6	42	84	.500	0	1	.000	25	39	.641	30	62	92	5.8	45	0	12	20	18	19	109	6.8
TOTAL	25	2	458	18.3	72	142	.507	0	1	.000	47	68	.691	48	96	144	5.8	82	4	20	35	31	35	191	7.6



#15 Kaila Turner

Guard • 5-8 • So.-1V
Joliet, Ill. (Marian Catholic HS)

Did You Know?

- ◆ One of 12 Illinois natives who have played for Notre Dame through the years, with 11 of those players (including Turner) coming from the Chicagoland area.
- ◆ From the "if you can't beat 'em, join 'em" files, Turner's high school team advanced to the Illinois Class AA semifinals during her junior year (2007-08), only to be defeated by eventual champion Fenwick High School, which was led

by her new Notre Dame teammate, senior forward Devereaux Peters (Turner's team came back to win the state third-place game).

2010-11 Highlights

- ◆ Logged two points and three assists (no turnovers) in season opener against New Hampshire.
- ◆ Posted one of best nights of career (and nearly first "5-5-5" game) against Morehead State with 10 points, and career highs for assists (5), rebounds (tied-4) and minutes (25).
- ◆ In her first career start, totaled seven points at #9 Kentucky with a pair of rebounds in 18 minutes and finished the game with a made three-pointer for the fifth time in her career.

Career Highs

- Points**
11 vs. Charlotte (12/20/09)
- Rebounds**
4, three times (MR: vs. Morehead St., 11/15/10)
- Assists**
5 vs. Morehead State (11/15/10)
- Field Goals**
4 vs. Charlotte (12/20/09)
- Field Goal Attempts**
7, twice (MR: vs. Morehead St., 11/15/10)
- 3-Point Field Goals**
1, five times (MR: at Kentucky (11/21/10))
- 3-Point Field Goal Attempts**
3, four times (MR: at Kentucky (11/21/10))
- Free Throws**
3 vs. Morehead State (11/15/10)
- Free Throw Attempts**
4 vs. Charlotte (12/20/09)
- Steals**
5 vs. Charlotte (12/20/09)
- Blocked Shots**
None
- Minutes Played**
25 vs. Morehead State (11/15/10)

Miscellaneous

- Double-doubles0
- Double-figure scoring games ...2
- 20-point games.....0
- Double-figure rebound games....0
- 5-assist games1
- 5-steal games.....1

Turner Game-by-Game

Opponent	Date	GS	Min	FG	FGA	Pct	3FG	FGA	Pct	FT	FTA	Pct	Off	Def	Tot	Avg	PF	FO	A	TO	Blk	Stl	Pts	Avg
NEW HAMPSHIRE	11/12/10	22	0	3	.000	0	3	.000	2	2	1.000	0	1	1	1.0	3	0	3	0	0	1	2	2.0	
MOREHEAD STATE	11/15/10	25	3	7	.429	1	3	.333	3	3	1.000	0	4	4	2.5	3	0	5	3	0	2	10	6.0	
UCLA	11/18/10	7	0	1	.000	0	1	.000	0	0	.000	0	0	0	1.7	2	0	0	1	0	0	0	4.0	
at Kentucky	11/21/10	18	3	6	.500	1	3	.333	0	0	.000	0	2	2	1.8	4	0	0	3	0	2	7	4.8	
TOTAL		0	72	6	.353	2	10	.200	5	5	1.000	0	7	7	1.8	12	0	8	7	0	5	19	4.8	

Turner's Career Statistics — All Games

Year	GP	GS	Min	Avg	FG	FGA	Pct	FG	FGA	Pct	FT	FTA	Pct	Off	Def	Tot	Avg	PF	FO	Ast	TO	Blk	Stl	Pts	Avg
2009-10	21	0	128	6.1	15	36	.417	3	16	.188	6	10	.600	1	14	15	0.7	8	0	18	12	0	7	39	1.9
2010-11	4	0	72	18.0	6	17	.353	2	10	.200	5	5	1.000	0	7	7	1.8	12	0	8	7	0	5	19	4.8
TOTAL	25	0	200	8.0	21	53	.396	5	26	.192	11	15	.733	1	21	22	0.9	20	0	26	19	0	12	58	2.3

Turner's Career Statistics — BIG EAST Games

Year	GP	GS	Min	Avg	FG	FGA	Pct	FG	FGA	Pct	FT	FTA	Pct	Off	Def	Tot	Avg	PF	FO	Ast	TO	Blk	Stl	Pts	Avg
2009-10	11	0	31	2.8	3	10	.300	0	4	.000	1	2	.500	0	5	5	0.5	2	0	4	2	0	1	7	0.6
TOTAL	11	0	31	2.8	3	10	.300	0	4	.000	1	2	.500	0	5	5	0.5	2	0	4	2	0	1	7	0.6



#21 Natalie Novosel

Guard • 5-11 • Jr.-2V
Lexington, Ky. (Lexington Catholic HS)

Did You Know?

- ◆ Last name is pronounced “KNOW-vuh-sell” ... nickname is “Nasty”.
- ◆ First Notre Dame women’s basketball player ever to come from the state of Kentucky.
- ◆ Has twin brother, Nathan, who is a two-time all-conference forward on men’s basketball team at Division III University of Rochester (N.Y.); older sister, Shan non, completed career at University of Evansville in 2008-09.

2010-11 Highlights

- ◆ Dropped in 11 points and swiped career-high seven steals in season opener against New Hampshire.
- ◆ Chalked up 13 points, including career-high-tying 6-of-8 FT in 15 minutes against Morehead State.
- ◆ Enjoyed career night against #15 UCLA, tying personal high with 19 points (career bests of 7 FG and 2 3FG) in career-high 39 minutes ... also hit two big shots in final 1:15 of regulation to give team four-point lead, as well as putback shot with 8.6 seconds left in first overtime that nearly stood up as game-winner.
- ◆ In front of her hometown crowd, dropped 21 points and eight boards at #9 Kentucky ... added three assists and a pair of blocks.

Career Highs

- Points**
21 at Kentucky (11/21/10)
- Rebounds**
8, three times (MR: at Kentucky (11/21/10))
- Assists**
6, twice (MR: vs. Louisville, 3/6/10)
- Field Goals**
8 at Kentucky (11/21/10)
- Field Goal Attempts**
24 at Kentucky (11/21/10)
- 3-Point Field Goals**
2 vs. UCLA (11/18/10)
- 3-Point Field Goal Attempts**
7 at Kentucky (11/21/10)
- Free Throws**
6, three times (MR: vs. Morehead St., 11/15/10)
- Free Throw Attempts**
8, three times (MR: vs. Morehead St., 11/15/10)
- Steals**
7 vs. Morehead State (11/15/10)
- Blocked Shots**
2 at Kentucky (11/21/10)
- Minutes Played**
39 vs. UCLA (11/18/10)
- Miscellaneous**

- Double-doubles0
- Double-figure scoring games ..18
- 20-point games.....1
- Double-figure rebound games...0
- 5-assist games4
- 5-steal games.....3

Novosel Game-by-Game

Opponent	Date	GS	Min	FG	FGA	Pct	3FG	FGA	Pct	FT	FTA	Pct	Off	Def	Tot	Avg	PF	FO	A	TO	Blk	Stl	Pts	Avg
NEW HAMPSHIRE	11/12/10	*	18	4	5	.800	0	0	.000	3	3	1.000	1	1	2	2.0	0	0	1	0	0	7	11	11.0
MOREHEAD STATE	11/15/10	*	15	3	5	.600	1	1	1.000	6	8	.750	1	3	4	3.0	1	0	0	4	0	0	13	12.0
UCLA	11/18/10	*	39	7	12	.583	2	4	.500	3	6	.500	3	3	6	4.0	4	0	4	4	0	1	19	14.3
at Kentucky	11/21/10	*	35	8	24	.333	1	7	.143	4	6	.667	3	5	8	5.0	2	0	3	4	2	0	21	16.0
TOTAL			4	107	22	.478	4	12	.333	16	23	.696	8	12	20	5.0	7	0	8	12	2	8	64	16.0

Novosel’s Career Statistics — All Games

Year	GP	GS	Min	Avg	FG	FGA	Pct	FG	FGA	Pct	FT	FTA	Pct	Off	Def	Tot	Avg	PF	FO	Ast	TO	Blk	Stl	Pts	Avg
2008-09	31	0	638	20.6	74	150	.493	1	10	.100	65	90	.722	44	45	89	2.9	57	0	47	60	3	45	214	6.9
2009-10	35	4	527	15.1	59	138	.428	7	20	.350	51	67	.761	26	51	77	2.2	48	0	61	60	7	47	176	5.0
2010-11	4	4	107	26.8	22	46	.478	4	12	.333	16	23	.696	8	12	20	5.0	7	0	8	12	2	8	64	16.0
TOTAL	70	8	1272	18.2	155	334	.464	12	42	.286	132	180	.733	78	108	186	2.7	112	0	116	132	12	100	454	6.5

Novosel’s Career Statistics — BIG EAST Games

Year	GP	GS	Min	Avg	FG	FGA	Pct	FG	FGA	Pct	FT	FTA	Pct	Off	Def	Tot	Avg	PF	FO	Ast	TO	Blk	Stl	Pts	Avg
2008-09	16	0	341	21.3	42	85	.494	0	1	.000	34	48	.708	22	22	44	2.8	34	0	28	30	2	29	118	7.4
2009-10	16	0	233	14.6	28	61	.459	2	5	.400	16	21	.762	10	18	28	1.8	16	0	23	23	2	13	74	4.6
TOTAL	32	0	574	17.9	70	146	.479	2	6	.333	50	69	.725	32	40	72	2.3	50	0	51	53	4	42	192	6.0



#22 Brittany Mallory

Guard • 5-10 • Sr.-3V
Baltimore, Md. (McDonogh School)

Did You Know?

- ◆ Nickname is "Chip", which she gained during summer school prior to her freshman year — its origin is a bit fuzzy and depends on which of her teammates you're talking to.
- ◆ Earned certificate of merit for participation in Notre Dame's Rosenthal Leadership Institute in 2007-08 academic year.

- ◆ One of two ND players (along with Devereaux Peters) coming off torn ACLs in their left knees suffered in first month of 2008-09 season.
- ◆ One of seven Irish basketball players who also competed in another sport in high school — was a two-time honorable mention All-America lacrosse midfielder and was named to the 2006 high school All-Tewaaraton Team; in fact, she was actively recruited by several Division I schools to play lacrosse, but chose to focus on basketball at Notre Dame.

2010-11 Highlights

- ◆ Leads team in steals (3.7 spg.) while adding 6.7 points per game.
- ◆ Notched nine points and five steals in season opener against New Hampshire.
- ◆ Delivered seven points and game-high five steals vs. Morehead State.

Career Highs

- Points**
22 vs. Valparaiso (12/12/09)
- Rebounds**
8 at Cincinnati (2/9/10)
- Assists**
7 vs. Charlotte (12/20/09)
- Field Goals**
7, twice (MR: vs. Valparaiso, 12/12/09)
- Field Goal Attempts**
17 at St. John's (2/16/10)
- 3-Point Field Goals**
4 vs. South Florida (2/27/08)
- 3-Point Field Goal Attempts**
8 at St. John's (3/3/08)
- Free Throws**
6, twice (MR: vs. SDSU, 11/26/09)
- Free Throw Attempts**
8 vs. San Diego St. (11/26/09)
- Steals**
6 vs. Ark.-Pine Bluff (11/15/09)
- Blocked Shots**
1, seven times (MR: vs. Marquette, 2/23/10)
- Minutes Played**
36 at St. John's (2/16/10)

Miscellaneous

- Double-doubles0
- Double-figure scoring games ..16
- 20-point games.....1
- Double-figure rebound games...0
- 5-assist games4
- 5-steal games5

Mallory Game-by-Game

Opponent	Date	GS	Min	FG	FGA	Pct	3FG	FGA	Pct	FT	FTA	Pct	Off	Def	Tot	Avg	PF	FO	A	TO	Blk	Stl	Pts	Avg
NEW HAMPSHIRE	11/12/10	*	20	3	8	.375	1	4	.250	2	2	1.000	0	1	1	1.0	0	0	3	1	0	5	9	9.0
MOREHEAD STATE	11/15/10	*	18	1	2	.500	1	1	1.000	4	6	.667	1	1	2	1.5	0	0	2	0	0	5	7	8.0
UCLA	11/18/10	*	22	1	4	.250	1	3	.333	1	2	.500	1	0	1	1.3	1	0	1	1	0	1	4	6.7
TOTAL			3	60	5	.357	3	8	.375	7	10	.700	2	2	4	1.3	1	0	6	2	0	11	20	6.7

Mallory's Career Statistics — All Games

Year	GP	GS	Min	Avg	FG	FGA	Pct	FG	FGA	Pct	FT	FTA	Pct	Off	Def	Tot	Avg	PF	FO	Ast	TO	Blk	Stl	Pts	Avg
2007-08	33	0	533	16.2	64	187	.342	34	122	.279	46	57	.807	26	46	72	2.2	52	0	29	36	3	42	208	6.3
2008-09	7	3	154	22.0	21	45	.467	7	20	.350	8	13	.615	5	18	23	3.3	15	0	20	9	1	11	57	8.1
2009-10	35	2	676	19.3	76	206	.369	28	91	.308	49	66	.742	32	74	106	3.0	62	0	79	56	5	61	229	6.5
2010-11	3	3	60	20.0	5	14	.357	3	8	.375	7	10	.700	2	2	4	1.3	1	0	6	2	0	11	20	6.7
TOTAL	78	8	1423	18.2	166	452	.367	72	241	.299	110	146	.753	65	140	205	2.6	130	0	134	103	9	125	514	6.6

Mallory's Career Statistics — BIG EAST Games

Year	GP	GS	Min	Avg	FG	FGA	Pct	FG	FGA	Pct	FT	FTA	Pct	Off	Def	Tot	Avg	PF	FO	Ast	TO	Blk	Stl	Pts	Avg
2007-08	16	0	246	15.4	30	73	.411	21	55	.382	24	30	.800	9	15	24	1.5	24	0	14	20	2	16	105	6.6
2009-10	16	2	320	20.0	25	90	.278	10	40	.250	26	32	.813	13	29	42	2.6	29	0	36	26	3	30	86	5.4
TOTAL	32	2	566	17.7	55	163	.337	31	95	.326	50	62	.806	22	44	66	2.1	53	0	50	46	5	46	191	6.0



#23 Kayla McBride

Guard • 5-11 • Fr.-HS
Erie, Pa. (Villa Maria Academy)

Did You Know?

- ◆ Nickname is "K-Mac".
- ◆ One of three McDonald's All-Americans (Diggins, Peters) and two Gatorade state high school players of the year (Diggins - Indiana) on this year's Fighting Irish roster.
- ◆ One of three current Notre Dame players (Achonwa, Diggins) to have earned a medal in international basketball competition, having started last summer for gold medal-winning USA side at 2010 FIBA U18 Americas Championships in Colorado Springs.

2010-11 Highlights

- ◆ Collected eight points and three steals in college debut against New Hampshire.
- ◆ Dropped in game-high 14 points (7-11 FG) while adding six rebounds and two steals against Morehead State.
- ◆ Played season-high 33 minutes against #15 UCLA, tallying 11 points (2-3 3FG), four rebounds and season-best three assists.
- ◆ Dished out a career-high four assists at #9 Kentucky while pouring in 10 points against the Wildcats.

Career Highs

- Points**
14 vs. Morehead State (11/15/10)
- Rebounds**
6 vs. Morehead State (11/15/10)
- Assists**
4 at Kentucky (11/21/10)
- Field Goals**
7 vs. Morehead State (11/15/10)
- Field Goal Attempts**
11 vs. Morehead State (11/15/10)
- 3-Point Field Goals**
2 vs. UCLA (11/18/10)
- 3-Point Field Goal Attempts**
3 vs. UCLA (11/18/10)
- Free Throws**
2 vs. New Hampshire (11/12/10)
- Free Throw Attempts**
2, twice (MR: vs. UCLA, 11/18/10)
- Steals**
3 vs. New Hampshire (11/12/10)
- Blocked Shots**
1 vs. Morehead State (11/15/10)
- Minutes Played**
34 at Kentucky (11/21/10)

Miscellaneous

- Double-doubles0
- Double-figure scoring games3
- 20-point games.....0
- Double-figure rebound games...0
- 5-assist games0
- 5-steal games0

McBride Game-by-Game

Opponent	Date	GS	Min	FG	FGA	Pct	3FG	FGA	Pct	FT	FTA	Pct	Off	Def	Tot	Avg	PF	FO	A	TO	Blk	Stl	Pts	Avg
NEW HAMPSHIRE	11/12/10		23	3	9	.333	0	1	.000	2	2	1.000	0	2	2	2.0	0	0	2	2	0	3	8	8.0
MOREHEAD STATE	11/15/10		21	7	11	.636	0	0	.000	0	0	.000	2	4	6	4.0	2	0	1	2	1	2	14	11.0
UCLA	11/18/10		33	4	8	.500	2	3	.667	1	2	.500	4	0	4	4.0	2	0	3	1	0	1	11	11.0
at Kentucky	11/21/10	*	34	5	9	.556	0	2	.000	0	0	.000	0	2	2	3.5	1	0	4	1	0	0	10	10.8
TOTAL			111	19	37	.514	2	6	.333	3	4	.750	6	8	14	3.5	5	0	10	6	1	6	43	10.8

McBride's Career Statistics — All Games

Year	GP	GS	Min	Avg	FG	FGA	Pct	FG	FGA	Pct	FT	FTA	Pct	Off	Def	Tot	Avg	PF	FO	Ast	TO	Blk	Stl	Pts	Avg
2010-11	4	1	111	27.8	19	37	.514	2	6	.333	3	4	.750	6	8	14	3.5	5	0	10	6	1	6	43	10.8
TOTAL	4	1	111	27.8	19	37	.514	2	6	.333	3	4	.750	6	8	14	3.5	5	0	10	6	1	6	43	10.8



#32 Becca Bruszewski

Forward • 6-1 • Sr.-3V
Valparaiso, Ind. (Wheeler HS)

Did You Know?

- ◆ Last name is pronounced “broo-SHEFF-skee” ... nickname is “Bruiser”, due to her fearless, physical style of play and her penchant for leaving teammates and opponents black and blue after a practice or game.
- ◆ One of seven Irish basketball players who also competed in another sport in high school — was a three-time all-state volleyball middle blocker and still holds school records for career kills (2,042) and blocks (452), and single-season kills

(657) and blocks (139).

- ◆ First Notre Dame women’s basketball player from northwest Indiana, hailing from same area of state as former Irish men’s basketball All-America power forward Luke Harangody.

2010-11 Highlights

- ◆ Dished out three assists in season opener against New Hampshire.
- ◆ Tallied seven points (including six in game-opening 20-2 run) and game-high seven rebounds against Morehead State.
- ◆ Posted third career double-double with 12 points and career-high 13 rebounds in career-best 44 minutes against #15 UCLA.
- ◆ Narrowly missed out on back-to-back double-doubles with 12 points and eight caroms at #9 Ken tucky.

Career Highs

- Points**
25 vs. DePaul (2/14/10)
- Rebounds**
13 vs. UCLA (11/18/10)
- Assists**
7 at Louisville (1/19/10)
- Field Goals**
10 vs. DePaul (2/14/10)
- Field Goal Attempts**
17 vs. DePaul (2/14/10)
- 3-Point Field Goals**
2, seven times (MR: vs. Iona, 11/22/09)
- 3-Point Field Goal Attempts**
6 vs. Minnesota (3/22/09)
- Free Throws**
8 at South Florida (2/17/09)
- Free Throw Attempts**
12 vs. Syracuse (2/24/09)
- Steals**
4, twice (MR: vs. IPFW, 12/8/09)
- Blocked Shots**
3 at Pittsburgh (2/3/09)
- Minutes Played**
44 vs. UCLA (11/18/10)

Miscellaneous

- Double-doubles3
- Double-figure scoring games ..39
- 20-point games.....3
- Double-figure rebound games...3
- 5-assist games2
- 5-steal games.....0

Bruszewski Game-by-Game

Opponent	Date	GS	Min	FG	FGA	Pct	3FG	FGA	Pct	FT	FTA	Pct	Off	Def	Tot	Avg	PF	FO	A	TO	Blk	Stl	Pts	Avg
NEW HAMPSHIRE	11/12/10	*	15	0	1	.000	0	0	.000	1	2	.500	0	0	0	0.0	0	0	3	1	0	1	1	1.0
MOREHEAD STATE	11/15/10	*	18	3	6	.500	0	0	.000	1	2	.500	2	5	7	3.5	2	0	0	2	1	1	7	4.0
UCLA	11/18/10	*	44	6	12	.500	0	0	.000	0	0	.000	4	9	13	6.7	5	1	3	3	0	2	12	6.7
at Kentucky	11/21/10	*	31	5	9	.556	0	1	.000	2	5	.400	5	3	8	7.0	5	1	1	1	0	0	12	8.0
TOTAL			4	108	14	.500	0	1	.000	4	9	.444	11	17	28	7.0	12	2	7	7	1	4	32	8.0

Bruszewski's Career Statistics — All Games

Year	GP	GS	Min	Avg	FG	FGA	Pct	FG	FGA	Pct	FT	FTA	Pct	Off	Def	Tot	Avg	PF	FO	Ast	TO	Blk	Stl	Pts	Avg
2007-08	32	0	423	13.2	58	104	.558	1	2	.500	42	54	.778	37	43	80	2.5	58	0	13	31	10	16	159	5.0
2008-09	31	31	842	27.2	132	271	.487	21	56	.375	48	71	.676	31	125	156	5.0	88	2	52	53	15	33	333	10.7
2009-10	34	26	629	18.5	129	261	.494	8	31	.258	42	64	.656	46	60	106	3.1	92	3	48	42	18	23	308	9.1
2010-11	4	4	108	27.0	14	28	.500	0	1	.000	4	9	.444	11	17	28	7.0	12	2	7	7	1	4	32	8.0
TOTAL	101	61	2002	19.8	333	664	.502	30	90	.333	136	198	.687	125	245	370	3.7	250	7	120	133	44	76	832	8.2

Bruszewski's Career Statistics — BIG EAST Games

Year	GP	GS	Min	Avg	FG	FGA	Pct	FG	FGA	Pct	FT	FTA	Pct	Off	Def	Tot	Avg	PF	FO	Ast	TO	Blk	Stl	Pts	Avg
2007-08	14	0	171	12.2	21	35	.600	1	2	.500	21	24	.875	14	18	32	2.3	26	0	5	12	5	4	64	4.6
2008-09	16	16	458	28.6	73	158	.462	12	34	.353	30	40	.750	17	70	87	5.4	46	0	24	20	9	15	188	11.8
2009-10	16	14	323	20.2	64	133	.481	3	13	.231	17	25	.680	17	27	44	2.8	44	1	23	14	10	10	148	9.3
TOTAL	46	30	952	20.7	158	326	.485	16	49	.327	68	89	.764	48	115	163	3.5	116	1	52	46	24	29	400	8.7



#41 Mary Forr

Forward • 5-11 • Sr.-HS
Altoona, Pa. (Bishop Guilfoyle)

Overview

- ◆ Officially added as a walk-on player during preseason.
- ◆ Previously spent parts of three seasons as a member of Notre Dame's "Sixth Man Team" (practice squad), a role also held by former walk-on guard and 2010 graduate Alena Christiansen.
- ◆ Has been active in Notre Dame's RecSports program, winning a total of 11 team/individual intramural championships and being named the Notre Dame

RecSports Female Athlete of the Year in 2009.

- ◆ Determined, fundamentally-sound post player who adds depth to Fighting Irish front line corps, both i practices and games.

High School

- ◆ Four-year starter at Bishop Guilfoyle High School in Altoona, Pa.
- ◆ Averaged 17.0 points and 6.0 rebounds per game as a senior in 2006-07, leading team to a 30-1 record and the Pennsylvania Interscholastic Athletic Association (PIAA) Class A state championship.
- ◆ First-team all-state selection, as well as Mountain Athletic Conference Player of the Year and Blair County Sports Hall of Fame Scholar-Athlete of the Year in 2006-07.
- ◆ Also played tennis in high school, twice earning second-team all-state honors.

Personal Data

- ◆ Born Nov. 3, 1988, in Altoona, Pa. ... youngest of three children (older sister Marita and older brother Tommy, a 2007 Notre Dame graduate) born to Patricia and R. Thomas Forr, Jr.
- ◆ One of three Pennsylvania residents on this year's Fighting Irish roster, joining freshman guard Kayla McBride (Erie) and fellow walk-on, junior guard Veronica Badway (Pittsburgh).
- ◆ Enrolled in the College of Arts and Letters as a double major in political science and philosophy.
- ◆ Worked three summers at Helen Diller Home for the Blind and can read grade one braille.
- ◆ Spent time as basketball coach for St. Joseph County (Ind.) Special Olympics, and sister of former Special Olympian of the Month, Marita Forr.
- ◆ Just the third Fighting Irish player to wear No. 41, following Imani Dunbar (1997-2001) and Courtney L Vere (2002-06).

2010-11 Highlights

- ◆ Saw first collegiate action in season opener against New Hampshire, piling up six points (3-4 FG), two rebounds and an assist in nine minutes.
- ◆ Played six minutes against Morehead State, finishing with an assist and rebound.

Career Highs

Points

6 vs. New Hampshire (11/12/10)

Rebounds

2 vs. New Hampshire (11/12/10)

Assists

1, twice (MR: vs. Morehead State, 11/15/10)

Field Goals

3 vs. New Hampshire (11/12/10)

Field Goal Attempts

4 vs. New Hampshire (11/12/10)

3-Point Field Goals

None

3-Point Field Goal Attempts

None

Free Throws

None

Free Throw Attempts

None

Steals

None

Blocked Shots

None

Minutes Played

9 vs. New Hampshire (11/12/10)

Miscellaneous

Double-doubles0
 Double-figure scoring games0
 20-point games.....0
 Double-figure rebound games.....0
 5-assist games0
 5-steal games.....0

Forr Game-by-Game

Opponent	Date	GS	Min	FG	FGA	Pct	3FG	FGA	Pct	FT	FTA	Pct	Off	Def	Tot	Avg	PF	FO	A	TO	Blk	Stl	Pts	Avg
NEW HAMPSHIRE	11/12/10	9	3	4	.750	0	0	.000	0	0	.000	1	1	2	2.0	1	0	1	1	0	0	6	6.0	
MOREHEAD STATE	11/15/10	6	0	1	.000	0	0	.000	0	0	.000	0	1	1	1.5	2	0	1	0	0	0	0	3.0	
TOTAL		0	15	3	5	.600	0	0	.000	0	0	.000	1	2	3	1.5	3	0	2	1	0	0	6	3.0

Forr's Career Statistics — All Games

Year	GP	GS	Min	Avg	FG	FGA	Pct	FG	FGA	Pct	FT	FTA	Pct	Off	Def	Tot	Avg	PF	FO	Ast	TO	Blk	Stl	Pts	Avg
2010-11	2	0	15	7.5	3	5	.600	0	0	.000	0	0	.000	1	2	3	1.5	3	0	2	1	0	0	6	3.0
TOTAL	2	0	15	7.5	3	5	.600	0	0	.000	0	0	.000	1	2	3	1.5	3	0	2	1	0	0	6	3.0



#44 Ariel Braker

Forward • 6-1 • Fr.-HS
Grosse Pointe Woods, Mich. (Grosse Point North)

Did You Know?

- ◆ Nickname is "Rell".
- ◆ One of nine Fighting Irish basketball players who also competed in another sport in high school — like fellow Michigan prep standout (and Notre Dame junior forward Erica Solomon), Braker was a star high jumper in high school, qualifying for the state meet as a sophomore.
- ◆ Also competed in gymnastics for four years during her formative years.
- ◆ Has read every book in the "Twilight" series.

2010-11 Highlights

- ◆ Nearly had "5-5-5" game in her college debut against New Hampshire, registering five points, five rebounds and four steals in 12 minutes.
- ◆ Grabbed four rebound in six minutes against Morehead State.

Career Highs

- Points**
5 vs. New Hampshire (11/12/10)
- Rebounds**
5 vs. New Hampshire (11/12/10)
- Assists**
2 vs. New Hampshire (11/12/10)
- Field Goals**
2 vs. New Hampshire (11/12/10)
- Field Goal Attempts**
5 vs. New Hampshire (11/12/10)
- 3-Point Field Goals**
None
- 3-Point Field Goal Attempts**
None
- Free Throws**
1 vs. New Hampshire (11/12/10)
- Free Throw Attempts**
4 vs. New Hampshire (11/12/10)
- Steals**
4 vs. New Hampshire (11/12/10)
- Blocked Shots**
1 vs. New Hampshire (11/12/10)
- Minutes Played**
12 vs. New Hampshire (11/12/10)
- Miscellaneous**
 Double-doubles0
 Double-figure scoring games0
 20-point games0
 Double-figure rebound games.....0
 5-block games0
 5-steal games0

Braker Game-by-Game

Opponent	Date	GS	Min	FG	FGA	Pct	3FG	FGA	Pct	FT	FTA	Pct	Off	Def	Tot	Avg	PF	FO	A	TO	Blk	Stl	Pts	Avg
NEW HAMPSHIRE	11/12/10	12	2	5	.400	0	0	.000	1	4	.250	3	2	5	5.0	2	0	2	1	1	4	5	5.0	
MOREHEAD STATE	11/15/10	6	0	1	.000	0	0	.000	0	0	.000	1	3	4	4.5	1	0	0	0	0	0	0	2.5	
at Kentucky	11/21/10	1	0	0	.000	0	0	.000	0	0	.000	0	0	0	3.0	0	0	0	0	0	0	0	1.7	
TOTAL		0	19	2	6	.333	0	0	.000	1	4	.250	4	5	9	3.0	3	0	2	1	1	4	5	1.7

Braker's Career Statistics — All Games

Year	GP	GS	Min	Avg	FG	FGA	Pct	FG	FGA	Pct	FT	FTA	Pct	Off	Def	Tot	Avg	PF	FO	Ast	TO	Blk	Stl	Pts	Avg
2010-11	3	0	19	6.3	2	6	.333	0	0	.000	1	4	.250	4	5	9	3.0	3	0	2	1	1	4	5	1.7
TOTAL	3	0	19	6.3	2	6	.333	0	0	.000	1	4	.250	4	5	9	3.0	3	0	2	1	1	4	5	1.7

2010-11 ND Women's Basketball
Notre Dame Combined Team Statistics (as of Nov 21, 2010)
All games

RECORD:	OVERALL	HOME	AWAY	NEUTRAL
ALL GAMES	2-2	2-1	0-1	0-0
CONFERENCE	0-0	0-0	0-0	0-0
NON-CONFERENCE	2-2	2-1	0-1	0-0

#	Player	gp-gs	min	avg	Total		3-Point		F-Throw		Rebounds			pf	dq	a	to	blk	stl	pts	avg		
					fg-fga	fg%	3fg-fga	3fg%	ft-fga	ft%	off	def	tot										
21	NOVOSEL, Natalie	4-4	107	26.8	22-46	.478	4-12	.333	16-23	.696	8	12	20	5.0	7	0	8	12	2	8	64	16.0	
04	DIGGINS, Skylar	4-4	121	30.3	25-58	.431	0-8	.000	11-16	.688	4	5	9	2.3	10	0	18	17	1	10	61	15.3	
23	McBRIDE, Kayla	4-1	111	27.8	19-37	.514	2-6	.333	3-4	.750	6	8	14	3.5	5	0	10	6	1	6	43	10.8	
14	PETERS, Devereaux	4-4	65	16.3	16-30	.533	0-0	.000	4-6	.667	14	6	20	5.0	10	1	7	7	3	9	36	9.0	
32	BRUSZEWSKI, Becca	4-4	108	27.0	14-28	.500	0-1	.000	4-9	.444	11	17	28	7.0	12	2	7	7	1	4	32	8.0	
11	ACHONWA, Natalie	4-0	83	20.8	13-21	.619	0-0	.000	4-7	.571	13	16	29	7.3	12	1	7	11	2	5	30	7.5	
22	MALLORY, Brittany	3-3	60	20.0	5-14	.357	3-8	.375	7-10	.700	2	2	4	1.3	1	0	6	2	0	11	20	6.7	
01	SOLOMON, Erica	4-0	49	12.3	8-16	.500	0-0	.000	7-9	.778	2	5	7	1.8	6	0	3	8	3	7	23	5.8	
15	TURNER, Kaila	4-0	72	18.0	6-17	.353	2-10	.200	5-5	1.000	0	7	7	1.8	12	0	8	7	0	5	19	4.8	
41	FORR, Mary	2-0	15	7.5	3-5	.600	0-0	.000	0-0	.000	1	2	3	1.5	3	0	2	1	0	0	6	3.0	
02	BADWAY, Veronica	2-0	8	4.0	1-1	1.000	1-1	1.000	1-2	.500	0	1	1	0.5	1	0	0	1	0	1	4	2.0	
44	BRAKER, Ariel	3-0	19	6.3	2-6	.333	0-0	.000	1-4	.250	4	5	9	3.0	3	0	2	1	1	4	5	1.7	
12	MILLER, Fraderica	4-0	32	8.0	2-6	.333	0-0	.000	2-4	.500	2	4	6	1.5	4	0	3	3	0	8	6	1.5	
Team											12	6	18										
Total.....		4	850		136-285	.477	12-46	.261	65-99	.657	79	96	175	43.8	86	4	81	83	14	78	349	87.2	
Opponents.....		4	850		82-212	.387	17-73	.233	62-99	.626	50	85	135	33.8	85	2	40	127	11	38	243	60.8	

TEAM STATISTICS	ND	OPP	Date	Opponent	Score	Att.
SCORING	349	243	11/12/10	NEW HAMPSHIRE	W 99-48	8614
Points per game	87.2	60.8	11/15/10	MOREHEAD STATE	W 91-28	7763
Scoring margin	+26.5	-	11/18/10	UCLA	Lo2 83-86	7824
FIELD GOALS-ATT	136-285	82-212	11/21/10	at Kentucky	L 76-81	6794
Field goal pct	.477	.387				
3 POINT FG-ATT	12-46	17-73	* - Conference game			
3-point FG pct	.261	.233				
3-pt FG made per game	3.0	4.3				
FREE THROWS-ATT	65-99	62-99				
Free throw pct	.657	.626				
F-Throws made per game	16.3	15.5				
REBOUNDS	175	135				
Rebounds per game	43.8	33.8				
Rebounding margin	+10.0	-				
ASSISTS	81	40				
Assists per game	20.3	10.0				
TURNOVERS	83	127				
Turnovers per game	20.8	31.8				
Turnover margin	+11.0	-				
Assist/turnover ratio	1.0	0.3				
STEALS	78	38				
Steals per game	19.5	9.5				
BLOCKS	14	11				
Blocks per game	3.5	2.8				
ATTENDANCE	24201	6794				
Home games-Avg/Game	3-8067	1-6794				
Neutral site-Avg/Game	-	0-0				

Score by Periods	1st	2nd	OT	OT2	Totals
Notre Dame	165	168	12	4	349
Opponents	101	123	12	7	243

2010-11 ND Women's Basketball
Notre Dame Points-Rebounds-Assists (as of Nov 21, 2010)
All games

Opponent	Date	Score		01	02	04	11	12	14	15
				SOLOMON,ER	BADWAY,VER	DIGGINS,SK	ACHONWA,NA	MILLER,FRA	PETERS,DEV	TURNER,KAI
NEW HAMPSHIRE	11/12/10	99-48	w	11-1-0	3-1-0	12-2-4	7-4-5	1-2-2	23-8-0	2-1-3
MOREHEAD STATE	11/15/10	91-28	w	7-1-3	1-0-0	9-3-8	10-3-1	5-4-1	8-4-2	10-4-5
UCLA	11/18/10	83-86	L	3-2-0	DNP	22-1-5	9-9-0	0-0-0	3-2-4	0-0-0
at Kentucky	11/21/10	76-81	L	2-3-0	DNP	18-3-1	4-13-1	0-0-0	2-6-1	7-2-0

Opponent	Date	Score		21	22	23	32	41	44
				NOVOSEL,NA	MALLORY,BR	MCBRIDE,KA	BRUSZEWSKI	FORR,MARY	BRAKER,ARI
NEW HAMPSHIRE	11/12/10	99-48	w	11-2-1	9-1-3	8-2-2	1-0-3	6-2-1	5-5-2
MOREHEAD STATE	11/15/10	91-28	w	13-4-0	7-2-2	14-6-1	7-7-0	0-1-1	0-4-0
UCLA	11/18/10	83-86	L	19-6-4	4-1-1	11-4-3	12-13-3	DNP	DNP
at Kentucky	11/21/10	76-81	L	21-8-3	DNP	10-2-4	12-8-1	DNP	0-0-0

2010-11 ND Women's Basketball
Notre Dame Team Game-by-Game Comparison (as of Nov 21, 2010)
All games

Opponent	1st	2nd	Score	Mar	Total FG	FG Pct	3-Pointers	3FG Pct	Free Throws	FT Pct	Rebounds	Assist	T/Over	Block	Steal	Fouls
NEW HAMPSHIRE	53/12	46/36	99-48	+51	37-72/19-37	.514/.514	2-10/3-11	.200/.273	23-31/7-11	.742/.636	34/25 +9	26/10	19/49	3/3	36/10	15/23
MOREHEAD STATE	40/7	51/21	91-28	+63	33-63/7-40	.524/.175	3-6/2-20	.500/.100	22-33/12-25	.667/.480	47/29 +18	24/2	20/40	4/2	26/8	20/23
UCLA	37/41	30/26	83-86	(3)	34-74/30-69	.459/.435	5-15/4-15	.333/.267	10-19/22-31	.526/.710	43/46 (3)	20/19	27/26	2/2	11/15	24/21
Kentucky	35/41	41/40	76-81	(5)	32-76/26-66	.421/.394	2-15/8-27	.133/.296	10-16/21-32	.625/.656	51/35 +16	11/9	17/12	5/4	5/5	27/18

Note: Game totals are displayed in the format TEAM/OPPONENT for each category

Official Basketball Box Score -- Game Totals -- Final Statistics

Notre Dame vs Kentucky

11/21/10 1:08 pm at Memorial Coliseum, Lexington, KY

Notre Dame 76 • 2-2

##	Player	f	Total			3-Ptr			Rebounds			PF	TP	A	TO	Blk	Stl	Min
			FG	FGA	FT	FTA	FG	FGA	FT	FTA	Off							
14	PETERS, Devereaux	f	1	3	0	0	0	0	3	3	6	5	2	1	1	1	0	13
32	BRUSZEWSKI, Becca	f	5	9	0	1	2	5	5	3	8	5	12	1	1	0	0	31
04	DIGGINS, Skylar	g	7	17	0	2	4	5	0	3	3	4	18	1	6	1	1	34
21	NOVOSEL, Natalie	g	8	24	1	7	4	6	3	5	8	2	21	3	4	2	0	35
23	McBRIDE, Kayla	g	5	9	0	2	0	0	0	2	2	1	10	4	1	0	0	34
01	SOLOMON, Erica		1	3	0	0	0	0	1	2	3	0	2	0	1	1	0	9
11	ACHONWA, Natalie		2	4	0	0	0	0	8	5	13	4	4	1	0	0	2	22
12	MILLER, Fraderica		0	1	0	0	0	0	0	0	0	2	0	0	0	0	0	3
15	TURNER, Kaila		3	6	1	3	0	0	0	2	2	4	7	0	3	0	2	18
44	BRAKER, Ariel		0	0	0	0	0	0	0	0	0	0	0	0	0	0	0	1
Team									5	1	6							
Totals			32	76	2	15	10	16	25	26	51	27	76	11	17	5	5	200

FG % 1st Half: 16-36 44.4% 2nd half: 16-40 40.0% Game: 32-76 42.1% Deadball Rebounds 3,1
 3FG % 1st Half: 2-7 28.6% 2nd half: 0-8 0.0% Game: 2-15 13.3%
 FT % 1st Half: 1-5 20.0% 2nd half: 9-11 81.8% Game: 10-16 62.5%

Kentucky 81 • 3-0

##	Player	f	Total			3-Ptr			Rebounds			PF	TP	A	TO	Blk	Stl	Min
			FG	FGA	FT	FTA	FG	FGA	FT	FTA	Off							
34	DUNLAP, Victoria	f	7	12	0	2	10	12	6	8	14	2	24	4	2	3	2	38
01	MATHIES, A'dia	g	2	9	0	1	2	8	1	3	4	2	6	0	2	1	1	34
04	SNOWDEN, Keyla	g	5	14	5	12	2	2	1	1	2	1	17	0	1	0	1	28
05	MORROW, Carly	g	0	2	0	1	0	0	0	0	0	0	0	0	0	0	1	5
20	CONWRIGHT, Maegan	g	2	6	0	2	4	6	0	0	0	5	8	3	0	0	0	25
03	RILEY, Crystal		2	6	0	2	1	2	0	0	0	1	5	0	2	0	0	15
10	PINKETT, Bernisha		7	14	3	6	0	0	4	1	5	3	17	0	4	0	0	23
32	EVANS, Kastine		0	2	0	1	2	2	1	1	2	4	2	2	0	0	0	23
40	HENDERSON, Brittany		1	1	0	0	0	0	1	2	3	0	2	0	1	0	0	9
Team									2	3	5							
Totals			26	66	8	27	21	32	16	19	35	18	81	9	12	4	5	200

FG % 1st Half: 14-37 37.8% 2nd half: 12-29 41.4% Game: 26-66 39.4% Deadball Rebounds 8,3
 3FG % 1st Half: 3-16 18.8% 2nd half: 5-11 45.5% Game: 8-27 29.6%
 FT % 1st Half: 10-13 76.9% 2nd half: 11-19 57.9% Game: 21-32 65.6%

Officials: Lisa Mattingly, Felicia Grinter, Bryan Enterline
 Technical fouls: Notre Dame-None. Kentucky-None.
 Attendance: 6794

Score by periods	1st	2nd	Total
Notre Dame	35	41	76
Kentucky	41	40	81

Points	In Paint	Off T/O	2nd Chance	Fast Break	Bench
ND	52	15	19	8	13
KENTUC	36	18	13	4	26

Last FG - ND 2nd-00:43, KENTUCKY 2nd-02:54.
 Largest lead - ND by 7 1st-16:21, KENTUCKY by 12 1st-02:32.

Score tied - 5 times.
 Lead changed - 3 times.