



2020-21 GEORGIA TECH WOMEN'S BASKETBALL

Georgia Tech Athletic Association Communications & Public Relations • WBB Contact: Liz Ryan
Office: 404-894-5445 • Cell: 404-431-9619 • Email: lryan@athletics.gatech.edu • @GTWBB

2020-21 SCHEDULE

Overall: 3-1 ACC: 1-0 Streak: W2

Home: 3-1 Away: 0-0 Neutral: 0-0

| | | |
|-----------|--------------------|-------------|
| Nov. 25 | GEORGIA STATE | W, 62-38 |
| Nov. 29 | GEORGIA | L, 69-75 OT |
| Dec. 3 | TULANE | W, 55-51 |
| Dec. 9 | BOSTON COLLEGE* | W, 86-68 |
| Dec. 13 | at Notre Dame* | 2 p.m. |
| Dec. 17 | MIAMI* | 7 p.m. |
| Dec. 21 | UCF | 2 p.m. |
| Dec. 31 | NC STATE* | 7 p.m. |
| Jan. 3 | at Notre Dame* | 4 p.m. |
| Jan. 7 | at Clemson* | 7 p.m. |
| Jan. 10 | VIRGINIA TECH* | 2 p.m. |
| Jan. 14 | SYRACUSE* | 6 p.m. |
| Jan. 17 | at Virginia* | 1 p.m. |
| Jan. 21 | at Wake Forest* | 6 p.m. |
| Jan. 24 | DUKE* | 2 p.m. |
| Jan. 28 | at Miami* | 7 p.m. |
| Jan. 31 | at Florida State* | 2 p.m. |
| Feb. 4 | CLEMSON* | 7 p.m. |
| Feb. 7 | WAKE FOREST* | 2 p.m. |
| Feb. 11 | at Louisville* | 7 p.m. |
| Feb. 18 | FLORIDA STATE* | 6 p.m. |
| Feb. 21 | at Boston College* | 2 p.m. |
| Feb. 25 | at North Carolina* | 6 p.m. |
| Feb. 28 | PITTSBURGH* | TBA |
| March 3-7 | at ACC Tournament! | |

Home games in BOLD

* - ACC Conference Game

! - ACC Tournament (Greensboro, N.C.)

Georgia Tech (3-1, 1-0 ACC) at Notre Dame (2-2, 0-0 ACC)

Game 5 | 2 p.m. | South Bend, Ind. | Purcell Pavilion



YELLOW JACKETS

Head Coach: Nell Fortner
Record at GT: 23-12 (2nd year)
Career Record: 185-129 (11th year)

FIGHTING IRISH

Head Coach: Niele Ivey
Record at ND: 2-2 (1st year)
Career Record: 1-2 (1st year)



STORYLINES

• Georgia Tech hits the road for the first time this season, traveling for a matinee on Sunday at Notre Dame for the first of two trips to South Bend this season. Tech and the Fighting Irish are set to tip at 2 p.m. on ACC Network Extra with Conor Clingen and Mike Lightfoot calling the action. Fans can also TuneIn to hear Richard Musterer's radio call from Atlanta.

• The Yellow Jackets opened the ACC season with a convincing win over Boston College on Thursday. Four Yellow Jackets finished in double-figures led by a career-high 27 points from Lotta-Maj Lahtinen. The junior hit a career-best 11 field goals and five three-pointers, and set a personal-best with eight steals.

• In every game this season, the Jackets have won the battle on the glass, outrebounding all four opponents. Lorela Cubaj has led the Jackets in every game, pulling down a combined 50 rebounds to average 12.5 per game. Last season, Tech finished 2019-20 with a +5.8 rebounding margin and currently boasts a +7.5 margin on the glass.

• Lotta-Maj Lahtinen's eight-steal performance against Boston College marked the most steals recorded by an individual in the ACC this season. It also marks the most steals by a Yellow Jacket in a single game since Dawnn Maye recorded 10 steals against Marquette on Nov. 18, 2012.

• Senior forward Lorela Cubaj currently ranks second in the ACC in rebounding, leading Tech on the glass with a 12.5 rebounds per game average. The Jackets are 55th in the country, averaging 43.8 per game, and Cubaj ranks 8th individually in the nation.

• Georgia Tech welcomed six newcomers to this year's roster and all six have seen playing time after Anaya Boyd made her collegiate debut against Tulane. Freshman Loyal McQueen has made immediate impact, starting all four games and is currently third on the team in scoring, averaging 11.8 points per game.

• Georgia Tech and Notre Dame will meet for the 14th time on the hardwood on Sunday. The Fighting Irish lead the all-time series, 13-0, and have won all six contests in South Bend. In last season's lone meeting, Notre Dame captured a 59-51 decision in McCamish Pavilion, shooting 46.7 percent from the field and 73.9 percent from the free throw line. The Jackets were limited to a 30.2 percent shooting clip and hit 55.0 percent from the charity stripe.

• Among Tech's seven returning letterwinners are seniors Lorela Cubaj and Kierra Fletcher. The duo account for 32.7 percent of the team's scoring and 37.0 percent of the team's rebounding from last season.

• Overall, Tech returns 59.4 percent of its scoring and 60.7 percent of its rebounding from last season.



Lotta-Maj Lahtinen scored a career-high 27 points against Boston College.

| STARTERS (BASED OFF LAST GAME) | | | | | | NOTES | |
|--------------------------------|-----|--|-----|------|------|-------|---|
| | GP | GS | PPG | RPG | MPG | | |
| 00 | G | Loyal McQueen (Fr., 5-8, Florence, S.C.) | 4-4 | 11.8 | 2.8 | 34.7 | Scored in double-figures all three games |
| 3 | G | Sarah Bates (r-Jr., 5-9, Fresno, Calif) | 4-4 | 8.5 | 3.5 | 32.2 | Hit four treys in season-opener against GSU |
| 13 | F | Lorela Cubaj (Sr., 6-4, Terni, Italy) | 4-4 | 15.5 | 12.5 | 33.5 | Posted two-straight double-doubles |
| 20 | C | Nerea Hermosa (So., 6-5, Vitoria, Spain) | 4-3 | 5.5 | 3.5 | 18.1 | Posted six points and five rebounds against GSU |
| 31 | G | Lotta-Maj Lahtinen (Jr., 5-7, Helsinki, Finland) | 4-4 | 13.5 | 6.8 | 34.9 | Recorded double-double against GSU |
| OFF THE BENCH | | | | | | | |
| 4 | G | Anaya Boyd (Fr., 5-10, McDonough, Ga.) | 1-0 | 0.0 | 1.0 | 2.1 | Made collegiate debut against Tulane |
| 11 | F | Aixa Wone Aranz (So., 6-3, Pamplona, Spain) | 4-1 | 2.8 | 4.0 | 22.5 | Averaging 21.3 minutes per game off the bench |
| 12 | G | Kondalia Montgomery (Jr., 5-7, Tacoma, Wash.) | | | | | |
| 14 | G | Anisa Clark (Fr., 5-7, McDonough, Ga.) | 1-0 | 0.0 | 0.0 | 0.9 | Made debut against Georgia State |
| 15 | G | Ayonce Carter (Fr., 5-10, Norcross, Ga.) | 2-0 | 5.5 | 2.0 | 12.1 | |
| 24 | G/F | Eylia Love (Fr., 6-1, Kansas City, Kansas) | 4-0 | 7.8 | 5.3 | 23.4 | Hit two three-pointers against Tulane |
| 41 | G | Kierra Fletcher (Sr., 5-9, Warren, Mich.) | | | | | |

QUICK FACTS

GENERAL

Full Name: Georgia Institute of Technology
 Location: Atlanta, Ga.
 Founded: 1885
 Enrollment: 35,000
 Nicknames: Ramblin' Wreck, Yellow Jackets
 Colors: Old Gold and White
 Arena (Cap.): McCamish Pavilion (8,600)
 President: Dr. Ángel Cabrera
 Athletics Director: Todd Stansbury
 Faculty Ath. Representative: Dr. Baratunde Cole
 Sport Administrator: Joeleen Akin

COACHING STAFF

Head Coach: Nell Fortner
 Years at Tech: 2nd
 Twitter: @NellOnWheels
 Career Record: 185-129 (.587)
 Record at Tech: 23-12 (.645)/2 years
 Alma Mater: Texas, 1982
 Assistant Coaches: Tasha Butts, Blanche Alverson,
 Murriel Page
 Director of WBB Ops: Ashlee Villarreal

TEAM INFORMATION

2019-20 Overall Record: 20-11
 2019-20 ACC Record: 10-8
 2019-20 Home Record: 10-4
 2019-20 Road Record: 7-4
 2019-20 Neutral Record: 3-3
 Letterwinners R/L: 7/5
 Starters R/L: 4/1
 Newcomers 6

HISTORY

First Year: 1974-75 (47th season)
 Overall Record: 709-643 (.524)
 ACC Record: 218-371 (.370)
 ACC Tournament Record: 19-41
 Postseason Record: 21-24 (NCAA, WNIT & AIAW)
 NCAA Appearances/Last: 9, 2014
 NCAA Tournament Record: 5-9
 WNIT Record: 14-7
 All-Time Home Record: 383-217
 All-Time Road Record: 175-286
 All-Time Neutral Record: 82-82

ATHLETIC COMMUNICATIONS & PUBLIC RELATIONS

WBB Contact: Liz Ryan
 Email: lryan@athletics.gatech.edu
 Phone: 404-894-5445
 Cell Phone: 404-431-9619
 Press Row: 404-894-5458
 Website: www.ramblinwreck.com

It is incorrect to call it "Georgia Tech University."

**Officially, it's The Georgia Institute of Technology.
But just call us "Georgia Tech."**

2020-21 GEORGIA TECH WOMEN'S BASKETBALL ROSTER

Numerical

| No. | Name | YR | HT | POS | Hometown | High School/Previous School |
|-----|---------------------|-------|------|-----|---------------------|------------------------------|
| 00 | Loyal McQueen | Fr. | 5-8 | G | Florence, S.C. | Wilson |
| 3 | Sarah Bates | r-Jr. | 5-9 | G | Fresno, Calif. | Clovis West/Kansas State |
| 4 | Anaya Boyd | Fr. | 5-10 | G | McDonough, Ga. | Lovejoy |
| 11 | Aixa Wone Aranz | So. | 6-3 | F | Pamplona, Spain | IES Joaquim Blume/Ohio State |
| 12 | Kondalia Montgomery | Jr. | 5-7 | G | Tacoma, Wash. | Lincoln |
| 13 | Lorela Cubaj | Sr. | 6-4 | F | Terni, Italy | Istituto Paritario G. Parini |
| 14 | Anisa Clark | Fr. | 5-7 | G | McDonough, Ga. | Union Grove |
| 15 | Avyonce Carter | Fr. | 5-10 | G | Norcross, Ga. | Wesleyan |
| 20 | Nerea Hermosa | So. | 6-5 | C | Vitoria, Spain | IES Joaquim Blume |
| 21 | Ronni Nwora | r-Fr. | 6-2 | F/C | Buffalo, N.Y. | The Park School of Buffalo |
| 24 | Eylia Love | Fr. | 6-1 | G/F | Kansas City, Kansas | Olathe North |
| 31 | Lotta-Maj Lahtinen | Jr. | 5-7 | G | Helsinki, Finland | Makelanrinne Sports |
| 41 | Kierra Fletcher | Sr. | 5-9 | G | Warren, Mich. | Warren Cousino |

Alphabetical

| No. | Name | YR | HT | POS | Hometown | High School/Previous School |
|-----|---------------------|-------|------|-----|---------------------|------------------------------|
| 11 | Aixa Wone Aranz | So. | 6-3 | F | Pamplona, Spain | IES Joaquim Blume/Ohio State |
| 3 | Sarah Bates | r-Jr. | 5-9 | G | Fresno, Calif. | Clovis West/Kansas State |
| 4 | Anaya Boyd | Fr. | 5-10 | G | McDonough, Ga. | Lovejoy |
| 15 | Avyonce Carter | Fr. | 5-10 | G | Norcross, Ga. | Wesleyan |
| 14 | Anisa Clark | Fr. | 5-7 | G | McDonough, Ga. | Union Grove |
| 13 | Lorela Cubaj | Sr. | 6-4 | F | Terni, Italy | Istituto Paritario G. Parini |
| 41 | Kierra Fletcher | Sr. | 5-9 | G | Warren, Mich. | Warren Cousino |
| 20 | Nerea Hermosa | So. | 6-5 | C | Vitoria, Spain | IES Joaquim Blume |
| 31 | Lotta-Maj Lahtinen | Jr. | 5-7 | G | Helsinki, Finland | Makelanrinne Sports |
| 24 | Eylia Love | Fr. | 6-1 | G/F | Kansas City, Kansas | Olathe North |
| 00 | Loyal McQueen | Fr. | 5-8 | G | Florence, S.C. | Wilson |
| 12 | Kondalia Montgomery | Jr. | 5-7 | G | Tacoma, Wash. | Lincoln |
| 22 | Ronni Nwora | r-Fr. | 6-2 | F/C | Buffalo, N.Y. | The Park School of Buffalo |

Head Coach: Nell Fortner (Texas, 1982), 2nd season

Assistant Coach: Tasha Butts (Tennessee, 2004), 2nd season

Assistant Coach: Blanche Alverson (Auburn, 2013), 2nd season

Assistant Coach: Murriel Page (Florida, 1998), 1st season

Chief of Staff: Mickie DeMoss (Louisiana Tech, 1977)

Director of Operations: Ashlee Villarreal (Texas Tech, 2017)

Assistant Director of Operations: Brittini Oliver (Tusculum College, 2011)

Director of Video: Sydney Durrah (Maryland, 2015)

Recruiting Operations: Cortnee Walton (Louisville, 2015)

Athletic Trainer: Rachel Matthews

Player Development Coach: Yolanda Berryhill

HOW TO SAY IT

| | | | |
|--------------------|-------------------------------------|-------------|------------------------|
| Aixa Wone Aranz | eye-sha wone (like moan) ah-duh-nas | Eylia Love | uh-lee-uh |
| Avyonce Carter | ah-vee-on-see | Ronni Nwora | WOR-uh ('N' is silent) |
| Anisa Clark | a-knee-suh | | |
| Lorela Cubaj | low-rell-UH coo-BYE | | |
| Nerea Hermosa | nu-RAY-uh her-MOS-a | | |
| Lotta-Maj Lahtinen | LOW-tah MY LAW-tin-in | | |

BY CLASS:

Seniors (2): Lorela Cubaj, Kierra Fletcher
Juniors (3): Sarah Bates, Kondalia Montgomery, Lotta-Maj Lahtinen
Sophomores (2): Aixa Wone Aranz, Nerea Hermosa
Freshman (6): Loyal McQueen, Anaya Boyd, Anisa Clark, Avyonce Carter, Ronni Nwora, Eylia Love

BY STATE/COUNTRY:

California: Sarah Bates
Finland: Lotta-Maj Lahtinen
Georgia: Anaya Boyd, Anisa Clark, Avyonce Carter
Italy: Lorela Cubaj
Kansas: Eylia Love
Michigan: Kierra Fletcher
New York: Ronni Nwora
South Carolina: Loyal McQueen
Spain: Aixa Wone Aranz, Nerea Hermosa
Washington: Kondalia Montgomery

BY POSITION:

Guards: Sarah Bates, Anaya Boyd, Avyonce Carter, Anisa Clark, Kierra Fletcher, Lotta-Maj Lahtinen, Eylia Love,
Forwards: Aixa Wone Aranz, Lorela Cubaj, Ronni Nwora
Center: Nerea Hermosa

SERIES HISTORY

Overall: Notre Dame leads 13-0

Current Streak: L13

Home Games: Notre Dame leads 7-0

Last: 2/2/20 - Notre Dame 59, Georgia Tech 51

Away Games: Notre Dame leads 6-0

Last: 2/3/19 - ND 90, GT 50

Neutral Sites: N/A

LAST MEETINGS VS. NOTRE DAME

| | | | |
|---------------|---|---|-------|
| Feb. 2, 2020 | h | L | 59-51 |
| Feb. 3, 2019 | a | L | 90-50 |
| Jan. 6, 2019 | h | L | 76-55 |
| Jan. 11, 2018 | a | L | 85-69 |
| Jan. 7, 2018 | h | L | 77-54 |
| Feb. 12, 2017 | a | L | 69-90 |
| Jan. 2, 2017 | h | L | 38-55 |
| Jan. 28, 2016 | h | L | 42-54 |
| Dec. 30, 2015 | a | L | 76-85 |
| Feb. 19, 2015 | h | L | 61-71 |
| Jan. 22, 2015 | a | L | 76-89 |
| Feb. 17, 2014 | a | L | 72-87 |

TEAM COMPARISON



| | |
|-----------------------|-------|
| Record | 3-1 |
| Conference Record | 1-0 |
| Points per game | 68.0 |
| Scoring Margin | +10.0 |
| FG Percentage | .397 |
| 3-pt FG Percentage | .300 |
| 3-pt FG Made Per Game | 6.0 |
| FT Percentage | .698 |
| Rebounds per game | 43.8 |
| Rebounding Margin | +7.5 |
| Assists Per Game | 12.8 |
| Turnovers Per Game | 16.5 |
| Turnover Margin | -0.3 |
| Steals Per Game | 8.5 |
| Blocks Per Game | 3.3 |



| | |
|-----------------------|------|
| Record | 2-2 |
| Conference Record | 0-0 |
| Points per game | 76.0 |
| Scoring Margin | +4.0 |
| FG Percentage | .481 |
| 3-pt FG Percentage | .303 |
| 3-pt FG Made Per Game | 5.0 |
| FT Percentage | .732 |
| Rebounds per game | 33.5 |
| Rebounding Margin | -2.8 |
| Assists Per Game | 17.0 |
| Turnovers Per Game | 15.0 |
| Turnover Margin | +2.5 |
| Steals Per Game | 8.5 |
| Blocks Per Game | 2.8 |

TOP STAT LEADERS

POINTS

Lorela Cubaj
• 15.5 ppg

REBOUNDS

Lorela Cubaj
• 12.5 rpg

ASSISTS

Lotta-Maj Lahtinen
• 3.8 apg

STEALS

Lotta-Maj Lahtinen
• 3.8 spg

POINTS

Maddy Westbeld
• 17.5 ppg

REBOUNDS

Maddy Westbeld
• 6.8 rpg

ASSISTS

Dara Mabrey
• 3.3 apg

STEALS

Anaya Peoples
• 2.3 spg

UNSTOPPABLE LAHTINEN

Lotta-Maj Lahtinen was practically unstoppable in Tech's first ACC game against Boston College on Dec. 9. The junior dropped a career-high 27 points to lead all scorers in the win. Lahtinen reached 27 points, shooting 11-of-16 from the field, including a 5-for-8 performance from three-point range. The 11 field goals and five three-pointers each marked personal-bests. Additionally, Lahtinen recorded a career-high eight steals in the win. The 20-plus point outing marked the first of her collegiate career.

The eight steals marked the most by a Yellow Jacket in a single game since Dawnn Maye recorded 10 steals against Marquette on Nov. 18, 2012.

MCQUEEN JUMPS RIGHT IN

Tech freshman guard Loyal McQueen has quickly filled a starting role with the Yellow Jackets, earning the start in all four games thus far. The freshman has also contributed double-figure scoring numbers in all four outings, and currently is third on the team in scoring, averaging 11.8 points per game. The Florence, S.C., native is averaging 34.7 minutes per game.

DOUBLE-DOUBLES ANYONE?

In Tech's first three games of the 2020-21 season, two different Yellow Jackets recorded double-doubles: Lotta-Maj Lahtinen and Lorela Cubaj (2). Lahtinen helped lead the Jackets to a victory over Georgia State (Nov. 25) with her second career double-double (14 pts, 10 rebs), while Cubaj posted her 10th and 11th career double-doubles against Georgia (20 pts, 13 rebs) and Tulane (18 pts, 16 rebs). Cubaj is one of five players in the ACC to have recorded two or more double-doubles this season so far. Elizabeth Kitley of Virginia Tech leads the league with five double-doubles.

MORE ACC ALL AROUND

With the women's basketball schedule adjustments due to Covid-19, the ACC women's basketball schedule was extended to 20 games for the 2020-21 season. Due to the extended conference schedule, the Yellow Jackets visit Notre Dame twice and will play a home-and-home with Boston College. In addition, Tech will have home-and-home series against Clemson, Florida State, Miami and Wake Forest.

CONTINUING MOMENTUM

Under second-year head coach Nell Fortner, the Yellow Jackets look to carry momentum from an impressive 2019-20 campaign into 2020-21. Tech finished last season with a 20-11 overall record, finished seventh in the ACC behind a 10-8 league record and reached the ACC Tournament quarterfinals before the season was suspended due to Covid-19. Fortner was tabbed the 2020 Whack Hyder Georgia Women's College Coach of the Year following the conclusion of the 2019-20 season. Francesca Pan led the Yellow Jackets offensively last season, averaging 13.4 points per game. She earned All-ACC honors, ACC All-Tournament Team accolades and All-ACC Academic Team recognition to close out her collegiate career.

At the collegiate level, Fortner enters her 11th season as a head coach having led the helm at Purdue (one season), Auburn (eight seasons) and Georgia Tech (one season). In her collegiate head coaching career, Fortner has compiled a 185-129 (.587) record.

WHAT RETURNS

Georgia Tech returns seven letterwinners from last season's squad and welcomes six newcomers. The Jackets return 59.4 percent of its scoring from last season and 60.7 percent of its rebounding.

Tech will look for leadership from its two seniors this season: Lorela Cubaj and Kierra Fletcher. Cubaj, the team's leading rebounder in 2019-20, averaged a 7.7 rebounds per game. Fletcher enters the 2020-21 season as the team's leading returning scorer having averaged 10.2 points per game. With 814 career points, Fletcher needs to score 186 points her senior season to surpass

ACC PRESEASON PREDICTIONS

2020-21 Predicted Order of Finish

Blue Ribbon Panel

1. Louisville (45)
2. NC State (10)
3. Syracuse (2)
4. Notre Dame
5. North Carolina
6. Florida State
7. Virginia Tech
8. Boston College
9. Georgia Tech
10. Duke
11. Miami
12. Wake Forest
13. Clemson
14. Virginia
15. Pitt

Coaches

1. Louisville (13)
2. NC State (2)
3. Syracuse
4. North Carolina
5. Georgia Tech
6. Notre Dame
7. Virginia Tech
8. Florida State
9. Boston College
10. Miami
11. Duke
12. Wake Forest
13. Clemson
14. Pitt
15. Virginia

Blue Ribbon Panel Preseason Player of the Year

Dana Evans - Louisville, Sr., G

Coaches Preseason Player of the Year

Dana Evans - Louisville, Sr., G

2020-21 Blue Ribbon Panel Preseason All-ACC Team

Taylor Soule - Boston College
Dana Evans - Louisville
Janelle Bailey - North Carolina
Elissa Cunane - NC State
Sam Brunelle - Notre Dame
Kiara Lewis - Syracuse
Tiana Mangakahia - Syracuse
Elizabeth Kitley - Virginia Tech
Aisha Sheppard - Virginia Tech
Ivana Raca - Wake Forest

2020-21 Coaches Preseason All-ACC Team

Taylor Soule - Boston College
Dana Evans - Louisville
Janelle Bailey - North Carolina
Jakia Brown-Turner - NC State
Elissa Cunane - NC State
Kiara Lewis - Syracuse
Tiana Mangakahia - Syracuse
Elizabeth Kitley - Virginia Tech
Aisha Sheppard - Virginia Tech
Ivana Raca - Wake Forest

2020-21 Blue Ribbon Panel Newcomer Watch List

Tiana England - Florida State
Hailey Van Lith - Louisville
Deja Kelly - North Carolina
Maddy Westbeld - Notre Dame
Kamilla Cardoso - Syracuse

2020-21 Coaches Newcomer Watch List

Hailey Van Lith - Louisville
Kianna Smith - Louisville
Deja Kelly - North Carolina
Maddy Westbeld - Notre Dame
Kamilla Cardoso - Syracuse

TOP 25 POLLS

ASSOCIATED PRESS

- 1 Stanford
- 2 Louisville**
- 3 UConn
- 4 NC State**
- 5 South Carolina
- 6 Arizona
- 7 Baylor
- 8 Oregon
- 9 Kentucky
- 10 Texas A&M
- 11 UCLA
- 12 Mississippi State
- 13 Arkansas
- 14 Maryland
- 15 Indiana
- 15 Oregon State
- 17 Northwestern
- 18 Ohio State
- 19 Michigan
- 20 Syracuse**
- 21 Missouri State
- 22 South Dakota State
- 23 Texas
- 24 DePaul
- 25 Gonzaga

USA TODAY COACHES

- 1 Stanford
- 2 Louisville**
- 3 NC State**
- 4 South Carolina
- 5 UConn
- 6 Arizona
- 7 Baylor
- 8 Oregon
- 9 Kentucky
- 10 Texas A&M
- 11 UCLA
- 12 Mississippi State
- 13 Arkansas
- 14 Maryland
- 15 Indiana
- 16 Oregon State
- 17 Northwestern
- 18 Syracuse**
- 19 Ohio State
- 20 Michigan
- 21 South Dakota State
- 22 Missouri State
- 23 DePaul
- 24 Iowa State
- 25 Gonzaga

Bold = 2020-21 Opponent

WINS AGAINST RANKED FOES

| | | | |
|----------------|--------------------------|---|------------|
| Jan. 6, 1987 | #13 Maryland | H | 81-80 (OT) |
| Jan. 21, 1989 | #13 Virginia | H | 105-80 |
| Jan. 2, 1990 | #6 NC State | H | 79-78 |
| Jan. 18, 1990 | #15 Maryland | H | 70-68 |
| Jan. 17, 1992 | #16 NC State | H | 83-72 |
| Feb. 4, 1992 | at #18 Clemson | A | 59-57 |
| March 7, 1992 | vs. #4 Maryland | N | 68-67 |
| March 8, 1992 | vs. #18 Clemson | N | 74-73 |
| Jan. 15, 1993 | #15 North Carolina | H | 73-63 |
| Jan. 25, 1996 | #18 Clemson | H | 55-38 |
| Feb. 25, 1996 | at #17 Clemson | A | 72-62 |
| Jan. 5, 1997 | #7 NC State | H | 73-72 |
| Feb. 13, 1997 | #9 Virginia | H | 72-60 |
| Dec. 6, 1997 | #9 Virginia | H | 84-65 |
| Dec. 5, 1998 | at #17/14 NC State | A | 74-73 |
| Jan. 24, 1999 | #7/6 North Carolina | H | 91-84 |
| Jan. 13, 2000 | #15/12 North Carolina | H | 55-44 |
| Feb. 24, 2000 | at #14/11 NC State | A | 69-52 |
| March 4, 2000 | vs. #15/14 NC State | N | 71-62 |
| Jan. 7, 2001 | #25 Virginia | H | 70-65 |
| Feb. 8, 2001 | at #24 Virginia | A | 87-70 |
| Jan. 17, 2002 | at #17/16 North Carolina | A | 81-62 |
| Dec. 27, 2002 | vs. #24/22 Georgia | N | 55-49 |
| Dec. 3, 2004 | #6/6 Georgia | H | 55-49 |
| Feb. 1, 2007 | #4/4 Maryland | H | 77-72 |
| Dec. 3, 2008 | #21/24 Michigan St. | H | 70-57 |
| Jan. 22, 2009 | #2/3 North Carolina | H | 66-62 |
| March 1, 2009 | #22/19 Virginia | H | 74-66 |
| Dec. 5, 2010 | #21/22 Georgia | H | 69-53 |
| Jan. 6, 2011 | #8/8 North Carolina | H | 71-70 |
| Feb. 24, 2011 | at #13/16 North Carolina | A | 64-57 |
| March 4, 2011 | vs. #13/15 Maryland | N | 70-64 |
| Feb. 12, 2012 | at #23/RV North Carolina | A | 56-64 |
| March 20, 2012 | vs. #17/16 Georgetown | N | 76-64 |
| Feb. 6, 2014 | #13/11 North Carolina | H | 94-91 |
| Feb. 26, 2015 | #16/17 Duke | H | 71-62 |
| Jan. 15, 2017 | #24 Syracuse | H | 75-66 |
| Nov. 18, 2018 | #14 Georgia | H | 63-53 |
| Jan. 20, 2019 | #12/12 Syracuse | H | 65-55 |
| Jan. 2, 2020 | #23/RV Miami | H | 61-54 |
| Jan. 9, 2020 | #11/11 Florida State | A | 67-52 |
| Feb. 16, 2020 | #4/4 NC State | A | 65-61 |
| Feb. 23, 2020 | #17/18 Florida State | H | 65-62 |

LAST WIN VS. RANKED OPPONENT

Tech picked up its fourth win over a ranked opponent in the 2019-20 season, sweeping No. 17/18 Florida State on Feb. 23, 2020. Francesca Pan dropped 23 points in her final regular season home game on The Flats.

the 1,000-career point mark.

APPROACHING A MILESTONE

The team's leading returning scorer from last season, senior Kierra Fletcher is quickly approaching the 1,000-career point plateau, currently sitting with 814 career points. The Warren, Mich., native needs to score 186 points to become the 32nd member of the Georgia Tech women's basketball 1,000-career point club.

WHAT'S NEW?

Even though Tech returns the core of its roster from last season, the Jackets welcomed six newcomers to the squad. Tech's recruiting class was ranked No. 12 by ESPN HoopGurlz.

Loyal McQueen - Multi-sport athlete at Wilson High School...Competed in cross country and women's basketball...2019-20 Gatorade South Carolina Girls Player of the Year...Helped Wilson HS to Class 4A state quarterfinals as a senior...Surpassed 2,000 career points at Wilson... Scored 51 points, hitting 11 three-pointers in a single game as a senior...2020 Class 4A Girls Player of the Year...2020 Max Preps South Carolina Player of the Year...2019-20 South Carolina Miss Basketball...Three-time Florence Morning News Player of the Year...USA Today Southeast Player of the Year finalist...2019 Region VI-AAAA Player of the Year...2019 Miss Hoop Zone...Named 2019 Florence Morning News Preseason Player of the Year...Three-time South Carolina Basketball Coaches Association All-State selection...Twice-named first team all-region...Also tabbed USA Today second team South Carolina and all-State in both 2018 and 2019...In 2018, WPDE All Hoop Zone Player of the Year finalist and WPDE All Hoop Zone Team honoree... Ranked No. 74 overall and No. 22 guard by ESPN...Rated top South Carolina prospect...Four-star recruit.

Anaya Boyd - Attended Lovejoy High School...Served as team captain two years...Helped lead Lovejoy to 2018 State Championship...Tabbed second team AAAAAA all-State by AJC in 2018...Lovejoy finished State runner-up in 2019... McDonald's All-American nominee...Gatorade Player of the Year nominee...2020 Georgia Athletic Coaches Association Class 6A South first team...2020 All-Georgia honorable mention...2019 Atlanta Journal Constitution 6A Player of the Year...2019 Naismith Metro Player of the Year...Ranked No. 2 Georgia recruit by Prep Girls Hoops...Ranked by ESPN No. 31 overall and No. 8 in position...Surpassed 1,000 career point mark at Lovejoy.

Aixa Wone Aranz - A transfer from Ohio State where she played her freshman season...Appeared in 28 games as a freshman at Ohio State, making five starts...Finished with 43 points, 37 rebounds, 17 assists and eight steals...Scored season-high 12 points against Ohio, going 5-for-8 from the floor...Played season-high 28 minutes at Sacramento State, finishing with five points, six rebounds and three assists.

Anisa Clark - Attended Union Grove High School...Played for coach Dock Gammage and served as team captain her senior season...Was named Henry County All-Star Team in 2020...Tabbed 2020 Offensive Player of the Year...Also competed in track and field in shot put and discus...Received Scholar-Athlete Award three times (2017, 2019 and 2020).

Ayonce Carter - Attended Wesleyan School...Team captain junior and senior seasons...Helped lead team to 2017 and 2018 State Championships...State runner-up in 2019...Finished high school career third in school history in career points...Tabbed 2020 Region 5-A Player of the Year...2020 Georgia Athletic Coaches Association Class 1A North Player of the Year...2019 USA Today first team selection in Georgia...Named Atlanta Journal Constitution first team class A private all-State team in 2019 and second team in 2018...Four star recruit...Ranked No. 7 in position and No. 66 overall by ESPN.

Eylia Love - Served as team captain senior year at Olathe North High School...Tabbed Class 6A first team all-State in

CAREER DOUBLE-DOUBLES

LORELA CUBAJ - 11

- 13 pts, 11 rebs vs. Duke - 1/10/18
- 17 pts, 13 rebs vs. Bethune-Cookman - 3/15/18
- 13 pts, 12 rebs vs. Wofford - 12/30/18
- 17 pts, 12 rebs at UNC - 1/31/19
- 12 pts, 12 rebs vs. Georgia State - 11/20/19
- 16 pts, 12 rebs vs. Seton Hall - 11/28/19
- 20 pts, 11 rebs vs. ETSU - 12/15/19
- 10 pts, 10 rebs vs. Miami - 1/2/20
- 13 pts, 11 rebs vs. Florida State - 2/23/20
- 20 pts, 13 rebs vs. Georgia - 11/29/20
- 18 pts, 16 rebs vs. Tulane - 12/3/20

KIERRA FLETCHER - 4

- 11 pts, 14 rebs vs. Seton Hall - 12/20/18
- 13 pts, 11 rebs vs. Clemson - 2/21/19
- 15 pts, 13 rebs vs. Rice - 12/21/19
- 17 pts, 13 rebs at Virginia Tech - 2/13/20

LOTTA-MAJ LAHTINEN - 2

- 18 pts, 12 rebs at Clemson - 3/1/20
- 14 pts, 10 rebs vs. Georgia State - 11/25/20

LARGEST HOME CROWDS

| | | | | |
|-----|----------|-----------------|-----------|-------|
| 1. | 11/21/10 | #1/1 UConn | L, 71-51 | 7,325 |
| 2. | 2/8/95 | #11/11 UNC | L, 84-62 | 6,621 |
| 3. | 12/5/08 | Georgia | W, 57-42 | 6,212 |
| 4. | 2/7/99 | #9/11 Duke | L, 74-73 | 6,058 |
| 5. | 11/11/12 | #20/16 Tenn. | L, 54-71 | 5,517 |
| 6. | 1/23/93 | #10 Virginia | L, 107-81 | 4,158 |
| 7. | 2/21/93 | Wake Forest | W, 85-72 | 4,136 |
| 8. | 2/16/03 | Virginia | L, 56-54 | 4,044 |
| 9. | 1/26/02 | Clemson | W, 83-78 | 3,965 |
| 10. | 12/13/09 | MVSU | W, 89-41 | 3,864 |
| 11. | 1/20/96 | #7/7 Virginia | L, 79-58 | 3,849 |
| 12. | 1/8/04 | #1/2 Duke | L, 45-77 | 3,833 |
| 13. | 2/11/96 | Wake Forest | W, 75-65 | 3,827 |
| 14. | 2/18/99 | #17/17 Virginia | L, 73-86 | 3,812 |
| 15. | 1/13/03 | #1/1 Duke | L, 59-79 | 3,592 |
| 16. | 1/9/00 | #14/10 Duke | L, 45-64 | 3,512 |
| 17. | 2/27/94 | Duke | W, 64-56 | 3,385 |
| 18. | 2/10/08 | #3/3 UNC | L, 61-75 | 3,257 |

2020...McDonald's All-American nominee...Gatorade Player of the Year nominee...2020 DiRenna Award finalist...Kansas 6A Player of the Year finalist...2020 Sunflower League Player of the Year...2020 All-Sunflower League first team...2020 Class 6A second team...Earned Class 6A third team all-State and second team all-conference in 2019...Four star prospect...Ranked No. 64 overall and No. 12 in position by Collegiate Girls Basketball Report...Scored 1,000th career point at Olathe North on March 2, 2019.

HOME SWEET HOME

All time, the Yellow Jackets are 380-216 (.620) when playing at home. The Jackets have won the last seven-consecutive home openers dating back to the 2012-13 season.

ALL OVER THE WORLD

Georgia Tech's roster boasts players from seven different states and three different countries. Senior Lorela Cubaj (Terni, Italy), junior Lotta-Maj Lahtinen (Helsinki, Finland) and sophomores Nerea Hermosa (Vitoria, Spain) and Aixa Wone Aranz (Pamplona, Spain) are Tech's international student-athletes.

RECORD WHEN...

| | |
|-----------------------------------|-----|
| At home | 3-1 |
| On road | 0-0 |
| Neutral | 0-0 |
| Against ranked teams | 0-0 |
| In games decided by 3 pts or less | 0-0 |
| In games decided by 4-5 pts | 1-0 |
| In games decided by 6-10 pts | 0-1 |
| In games decided by 11-20 pts | 1-0 |
| In games decided by 21+ pts | 1-0 |
| Leading at half | 3-0 |
| Tied at half | 0-0 |
| Trailing at half | 0-1 |
| Leading with 10:00 remaining | 3-1 |
| Trailing with 10:00 remaining | 0-0 |
| Leading with 5:00 remaining | 3-0 |
| Trailing with 5:00 remaining | 0-1 |
| GT shoots 40% or better | 1-0 |
| GT shoots less than 40% | 2-1 |
| GT shoots same/better than opp | 3-0 |
| Opp. shoots 40% or better | 1-1 |
| Opp. shoots less than 40% | 2-0 |
| GT out-rebounds opp | 3-1 |
| Opp. out-rebounds GT | 0-0 |
| Teams tied in rebounding | 0-0 |
| GT shoots 70% or better on FT's | 2-1 |
| GT has more/same FT attempts | 2-0 |
| Opp. has more FT attempts | 1-1 |
| GT shoots 30% or better on 3pt | 2-0 |
| GT shoots less than 30% on 3pt | 1-1 |
| Opp. shoots 30% or better on 3pt | 0-0 |
| Opp. shoots less than 30% on 3pt | 3-1 |
| GT has more/same TO than opp | 2-0 |
| GT scores 90+ pts | 0-0 |
| GT scores 80-89 pts | 1-0 |
| GT scores 70-79 pts | 0-0 |
| GT scores 60-69 pts | 1-1 |
| GT scores 50-59 pts | 1-0 |
| GT scores less than 50 pts | 0-0 |
| Opp. scores 90+ pts | 0-0 |
| Opp. scores 80-89 pts | 0-0 |
| Opp. scores 70-79 pts | 0-1 |
| Opp. scores 60-69 pts | 1-0 |
| Opp. scores 50-59 pts | 1-0 |
| Opp. scores less than 50 pts | 1-0 |
| On Mondays | 0-0 |
| On Tuesdays | 0-0 |
| On Wednesdays | 2-0 |
| On Thursdays | 1-0 |
| On Fridays | 0-0 |
| On Saturdays | 0-0 |
| On Sundays | 0-1 |
| In November | 1-1 |
| In December | 2-0 |
| In January | 0-0 |
| In February | 0-0 |
| In March | 0-0 |
| In Overtime | 0-1 |
| In Gold Uniforms | 1-0 |
| In Navy Uniforms | 0-0 |
| In White Uniforms | 2-1 |

THE LAST TIME...

The Last Time (Team)

| | |
|---|---|
| Tech scored 100 points in a game: | 102 vs. Southeastern Louisiana, November 18, 2015 |
| Tech scored 100 points in an ACC game: | 101 at Virginia, March 2, 2008 (2 OT) |
| A Tech opponent scored 100 points: | 103 at Virginia, March 2, 2008 (2 OT) |
| Tech scored 60-69 points in a half: | 60 vs. Morgan State, Nov. 16, 2014 |
| Tech scored 70+ points in a half: | 70 vs. Presbyterian (2nd half), Dec. 2, 1985 |
| Tech won an overtime game: | vs. Wake Forest (89-82), Jan. 31, 2013 |
| Tech lost an overtime game: | vs. Georgia (75-69), Nov. 29, 2020 |
| Tech played a double overtime game: | at Houston (95-89), Nov. 9, 2018 |
| Tech played a triple overtime game: | vs. Michigan (89-79), April 1, 2017 |
| Tech shot 70 percent for a half: | 76.9 (20-26) at Houston, Nov. 9, 2018 |
| Tech shot 80 percent for a half: | Never |
| Tech shot 60 percent from the field in a game: | 63.5 (40-63) vs. Kennesaw State, Nov. 22, 2011 |
| Tech shot 90 percent from the free throw line in a game (min. 10 att.): | 92.3 (12-13), Wake Forest, Feb. 10, 2019 |
| Tech shot 100 percent from the free throw line in a game (min. 10 att.): | 1.000 (14-14), Virginia, Jan. 25, 2015 |
| Tech shot less than 40 percent from the field in a game: | 35.5 (22-62) vs. Tulane, Dec. 3, 2020 |
| Tech shot less than 30 percent from the field in a half: | 20.0 (6-30) Louisville vs. , Feb. 20, 2020 |
| Tech shot less than 50 percent from the free throw line in a game: | 33.3 (4-12) vs. Florida State, March 3, 2019 |
| Opponent shot less than 50 percent from the free throw line in a game: | 42.9 (6-14) vs. Georgia State, Nov. 25, 2020 |
| Tech did not make a 3-point field goal: | vs Virginia, Jan. 28, 2018 |
| Tech held an opponent under 30 percent shooting: | 23.3 (14-60), vs. Georgia State, Nov. 25, 2020 |
| An opponent shot 60 percent: | 62.3 (33-53) vs Notre Dame, Jan. 7, 2018 |
| Tech attempted 50 free throws: | 51 (made 34) vs. Alabama State, Nov. 24, 2015 |
| Tech made 40 free throws: | Never |
| Tech defeated a top-10 opponent: | No. 4/4 at NC State, 65-61, Feb. 16, 2020 |
| Tech defeated a top-25 opponent: | No. 17/18 vs. Florida State, 65-62, Feb. 23, 2020 |
| Tech defeated a top-25 opponent on the road: | No. 4/4 at NC State, 65-61, Feb. 16, 2020 |

The Last Time (Player)

| | |
|---|---|
| A player scored 40+ points: | Niesha Butler (40) vs. Florida State, Jan. 2, 1999 |
| A player scored 35-39 points: | Elizabeth Balogun (35) at North Carolina, Jan. 31, 2019 |
| A player scored 30-34 points: | Francesca Pan (30) at NC State, Feb. 16, 2020 |
| Two players scored 20+/same game: | Francesca Pan(22) & Lorela Cubaj (21) vs. Wake Forest, Feb. 9, 2020 |
| Three players scored 20+/same game: | Alex Montgomery (26), Janie Mitchell (20) and Iasia Hemingway (20) vs. Maryland, Jan. 20, 2008 |
| Four players scored 20+/same game: | Never |
| A player had back-to-back 30+ point games: | Carla Munnion (34) vs. Manhattan, Jan. 23, 1995, and (35) vs. Chattanooga, Dec. 13, 1995 |
| A player had 20+ rebounds: | Kisha Ford (21) vs. Mercer, Nov. 25, 1996 |
| A player had 15-19 rebounds: | Lorela Cubaj (16) vs. Tulane, Dec. 3, 2020 |
| Two players had a double-double | E. Dixon (22 pts, 17 rebs) and L. Cubaj (13 pts, 11 rebs) vs. Duke, Jan. 10, 2019 |
| Two players had double-figure rebounds in the same game: | Cubaj (10 rebs) and Balogun (10 rebs) at Louisville, Jan. 13, 2019 |
| Three players had double-figure rebounds in the same game: | Roddreka Rogers (12), Katarina Vuckovic (12) and Zaire O'Neil (11), NC State, Feb. 12, 2015 |
| One player had a double-double (Pts and Ast): | Aaliyah Whiteside (14 pts, 11 asts) vs. Prairie View A&M, Dec. 15, 2015 |
| One player had a double-double (Pts and Steals): | Dawnn Maye (23 pts, 10 steals) vs. Marquette, Nov. 18, 2012 |
| A player had a double-double in consecutive games: | Lorela Cubaj - vs. Georgia, Nov. 29, 2020 (20 pts, 13 rebs.) vs. Tulane, Dec. 3, 2020 (18 pts, 16 rebs.) |
| A player had a triple-double (Pts, Reb, Asst.): | Milli Martinez (12 pts, 10 reb, 10 ast) vs. Morris Brown, Feb. 23, 2002 |
| A player had 20 points and 20 rebounds in the same game: | Kisha Ford (21 pts, 21 reb) vs. Mercer, Nov. 25, 1996 |
| A player had 10-14 assists in a game: | Aaliyah Whiteside (11) vs. Prairie View A&M, Dec. 15, 2015 |
| A player had 15+ assists in a game: | Nina Bärlin (17) vs. Virginia, Jan. 10, 2002 |
| A player had 10+ assists in three consecutive games: | Nina Bärlin (11) vs. E. Washington, Nov. 24, 2001, (14) vs. Arkansas St., Dec. 1, 2001, (11) vs. Southern, Dec. 2, 2001, (13) vs. Florida State, Dec. 5, 2001 |
| A player topped the team in scoring, rebounds, and assists for a game: | Lotta-Maj Lahtinen, 27 pts, 7 reb, 5 ast vs. Boston College, Dec. 9, 2020 |
| A player played every minute of a game: | Kierra Fletcher vs. Pitt, March 5, 2020 |
| A player had five blocked shots in a game: | Elizabeth Balogun (6) vs. Syracuse, Jan. 20, 2019 |
| A player had five blocked shots in back-to-back games: | Zaire O'Neil (5) vs. Syracuse, Feb. 8, 2015 (6) vs. NC State, Feb. 12, 2015 |
| A player had 10+ steals in a game: | Dawnn Maye (10) vs. Marquette, Nov. 18, 2012 |

STARTING LINEUPS

| Game | | C/F | F/G | G/F | G | G |
|------|----------------|---------|-------|---------|-------|----------|
| N25 | Georgia State | Hermosa | Cubaj | McQueen | Bates | Lahtinen |
| N29 | Georgia | Hermosa | Cubaj | McQueen | Bates | Lahtinen |
| D3 | Tulane | Hermosa | Cubaj | McQueen | Bates | Lahtinen |
| D9 | Boston College | Aranaz | Cubaj | McQueen | Bates | Lahtinen |

SPECIALTY STATS (GT/Opp)

| Game | | Paint | Off TO | 2ndCh | FBreak | Bench |
|------|----------------|-------|--------|-------|--------|-------|
| N25 | Georgia State | 32/14 | 14/11 | 13/3 | 5/9 | 10/17 |
| N29 | Georgia | 40/38 | 21/16 | 8/4 | 6/16 | 12/27 |
| D3 | Tulane | 28/40 | 14/7 | 14/18 | 3/4 | 12/9 |
| D9 | Boston College | 32/30 | 18/17 | 9/11 | 13/13 | 19/6 |



LAST TIME VS. NOTRE DAME



Official Basketball Box Score - Final
Notre Dame at Georgia Tech
 02/02/20 McCarish Pavilion, Atlanta
 Georgia Tech vs. Notre Dame

Game Time: 2:00 PM
 Game Duration: 1:59
 Attendance: 1,749

Officials: Bryan Brunette, Carla Fountain, Robert Enterline

Notre Dame - 59

Record: 8-14 (3-7)

| NO. | Name | Min | FG | | | Rebounds | | | Fouls | | TP | AS | TO | ST | Blocks | | +/- |
|---------------|-------------------|---------|-------|--------|--------|----------|----|-----|-------|----|----|----|----|----|--------|----|-----|
| | | | M-A | 3P-M-A | FT-M-A | OR | DR | TOT | PF | FD | | | | | BS | BA | |
| 33 | Sam Brunelle | F 37:33 | 2-7 | 0-2 | 3-3 | 0 | 4 | 4 | 2 | 2 | 7 | 3 | 1 | 0 | 2 | 1 | 5 |
| 30 | Mikayla Vaughn | C 29:12 | 10-15 | 0-0 | 0-0 | 2 | 5 | 7 | 4 | 3 | 20 | 0 | 1 | 1 | 1 | 3 | 2 |
| 10 | Katlyn Gilbert | G 36:07 | 4-9 | 0-0 | 3-6 | 0 | 2 | 2 | 2 | 3 | 11 | 5 | 4 | 2 | 0 | 1 | 9 |
| 13 | Marta Sniezek | G 38:14 | 1-1 | 0-0 | 4-6 | 0 | 4 | 4 | 1 | 7 | 6 | 2 | 6 | 2 | 0 | 0 | 8 |
| 24 | Destinee Walker | G 40:00 | 4-11 | 0-3 | 7-8 | 0 | 4 | 4 | 3 | 5 | 15 | 2 | 1 | 2 | 0 | 1 | 8 |
| 2 | Kaitlin Cole | 08:59 | 0-0 | 0-0 | 0-0 | 0 | 0 | 0 | 2 | 0 | 0 | 0 | 0 | 1 | 0 | 0 | 2 |
| 22 | Danielle Cosgrove | 09:55 | 0-2 | 0-2 | 0-0 | 0 | 3 | 3 | 2 | 0 | 0 | 1 | 0 | 0 | 0 | 0 | 6 |
| Team | | | | | | 2 | 5 | 7 | | | 0 | | 3 | | | | |
| Totals | | | 21-45 | 0-7 | 17-23 | 4 | 27 | 31 | 16 | 20 | 59 | 13 | 16 | 8 | 3 | 6 | 8 |

| Shooting By Period | | |
|--------------------|------|-------------|
| 1st | FG% | 6-16 37.5% |
| | 3PT% | 0-1 0.0% |
| | FT% | 0-0 0% |
| 2nd | FG% | 5-10 50.0% |
| | 3PT% | 0-2 0.0% |
| | FT% | 1-2 50% |
| 3rd | FG% | 6-11 54.5% |
| | 3PT% | 0-3 0.0% |
| | FT% | 7-8 87.5% |
| 4th | FG% | 4-8 50.0% |
| | 3PT% | 0-1 0.0% |
| | FT% | 9-13 69.2% |
| GM | FG% | 21-45 46.7% |
| | 3PT% | 0-7 0.0% |
| | FT% | 17-23 73.9% |

Technical Fouls: NONE

Dead Ball Rebounds: 6, 0

Georgia Tech - 51

Record: 14-8 (5-6)

| NO. | Name | Min | FG | | | Rebounds | | | Fouls | | TP | AS | TO | ST | Blocks | | +/- |
|---------------|----------------------|---------|-------|--------|--------|----------|----|-----|-------|----|----|----|----|----|--------|----|-----|
| | | | M-A | 3P-M-A | FT-M-A | OR | DR | TOT | PF | FD | | | | | BS | BA | |
| 4 | Anne Françoise Diouf | F 16:12 | 1-6 | 0-0 | 0-0 | 4 | 3 | 7 | 1 | 0 | 2 | 0 | 1 | 0 | 2 | 1 | -8 |
| 20 | Nerea Hermosa | C 14:49 | 2-4 | 0-0 | 0-0 | 1 | 1 | 2 | 0 | 0 | 4 | 1 | 2 | 0 | 0 | 0 | -11 |
| 2 | Jasmine Carson | G 22:29 | 5-13 | 2-8 | 5-6 | 0 | 3 | 3 | 2 | 3 | 17 | 0 | 2 | 1 | 1 | 0 | -1 |
| 33 | Francesca Pan | G 26:18 | 1-7 | 0-3 | 0-2 | 1 | 1 | 2 | 5 | 1 | 2 | 1 | 2 | 0 | 1 | 0 | -2 |
| 41 | Kierra Fletcher | G 36:38 | 2-11 | 0-1 | 4-6 | 4 | 3 | 7 | 4 | 3 | 8 | 5 | 3 | 3 | 1 | 1 | -6 |
| 13 | Lorela Cubaj | 34:48 | 5-12 | 0-0 | 0-1 | 4 | 1 | 5 | 4 | 4 | 10 | 3 | 1 | 0 | 1 | 1 | -5 |
| 31 | Lotta-Maj Lahtinen | 28:28 | 2-4 | 0-1 | 2-5 | 2 | 6 | 8 | 3 | 5 | 6 | 1 | 3 | 1 | 0 | 0 | -6 |
| 00 | Daijah Jefferson | 11:45 | 0-1 | 0-1 | 0-0 | 0 | 0 | 0 | 0 | 0 | 0 | 1 | 0 | 0 | 0 | 0 | 1 |
| 12 | Kondalia Montgomery | 06:18 | 1-3 | 0-1 | 0-0 | 2 | 0 | 2 | 1 | 0 | 2 | 0 | 0 | 0 | 0 | 0 | -4 |
| 3 | Sarah Bates | 02:15 | 0-2 | 0-1 | 0-0 | 0 | 1 | 1 | 0 | 0 | 0 | 0 | 0 | 0 | 0 | 0 | 2 |
| Team | | | | | | 1 | 1 | 2 | | | 0 | | 2 | | | | |
| Totals | | | 19-63 | 2-16 | 11-20 | 19 | 20 | 39 | 20 | 16 | 51 | 12 | 16 | 5 | 6 | 3 | -8 |

Technical Fouls: NONE

Dead Ball Rebounds: 7, 0

| | ND | GT |
|------------------|---------------------------|--------------------------|
| Biggest lead | 13 (4 th 5:34) | 4 (2 nd 5:20) |
| Best Scoring Run | 6 (3 rd 8:11) | 6 (3 rd 6:58) |
| Lead Changes | 8 | |
| Times Tied | 14 | |
| Time with Lead | 20:21 | 07:09 |

| | ND | GT |
|---------------|----|----|
| Points from | | |
| Turnovers | 12 | 12 |
| Paint | 36 | 20 |
| Second Chance | 4 | 16 |
| Fast Breaks | 11 | 9 |
| Bench | 0 | 18 |

| | Period by Period Scoring | | | | |
|----|--------------------------|-----|-----|-----|-----|
| | 1st | 2nd | 3rd | 4th | TOT |
| ND | 12 | 11 | 19 | 17 | 59 |
| GT | 12 | 12 | 11 | 16 | 51 |

2020-21 GEORGIA TECH STATISTICS



2020-21 Georgia Tech Women's Basketball Combined Team Statistics All games

Page 1/1
as of Dec 09, 2020

Game Records

| Record | Overall | Home | Away | Neutral |
|----------------|---------|------|------|---------|
| ALL GAMES | 3-1 | 3-1 | 0-0 | 0-0 |
| CONFERENCE | 1-0 | 1-0 | 0-0 | 0-0 |
| NON-CONFERENCE | 2-1 | 2-1 | 0-0 | 0-0 |

Score by Periods

| Team | 1st | 2nd | 3rd | 4th | OT | TOT |
|--------------|-----|-----|-----|-----|----|-----|
| Georgia Tech | 69 | 65 | 77 | 55 | 6 | 272 |
| Opponents | 52 | 51 | 47 | 70 | 12 | 232 |

Team Box Score

| No. | Player | GP-GS | | MIN | | AVG | | Total | | 3-Point | | F-Throw | | Rebounds | | | | PF DQ A TO BLK STL PTS AVG | | | | | |
|------------------|---------------------|----------|----|------------|------|----------------|-------------|--------------|-------------|--------------|-------------|-----------|------------|------------|-------------|-----------|----------|----------------------------|-----------|-----------|-----------|------------|-------------|
| | | GP | GS | MIN | AVG | FG-FGA | FG% | 3FG-FGA | 3FG% | FT-FTA | FT% | OFF | DEF | TOT | AVG | PF | DQ | A | TO | BLK | STL | PTS | AVG |
| 13 | CUBAJ, Lorela | 4-4 | | 134:06 | 33.5 | 25-59 | .424 | 1-6 | .167 | 11-16 | .688 | 9 | 41 | 50 | 12.5 | 8 | 0 | 9 | 8 | 9 | 10 | 62 | 15.5 |
| 31 | LAHTINEN, Lotta-Maj | 4-4 | | 139:43 | 34.9 | 22-50 | .440 | 5-17 | .294 | 5-6 | .833 | 8 | 19 | 27 | 6.8 | 9 | 0 | 15 | 17 | 0 | 15 | 54 | 13.5 |
| 00 | MCQUEEN, Loyal | 4-4 | | 138:60 | 34.7 | 19-52 | .365 | 5-21 | .238 | 4-7 | .571 | 1 | 10 | 11 | 2.8 | 10 | 0 | 13 | 16 | 1 | 2 | 47 | 11.8 |
| 3 | BATES, Sarah | 4-4 | | 128:50 | 32.2 | 11-29 | .379 | 10-27 | .370 | 2-2 | 1.000 | 0 | 14 | 14 | 3.5 | 4 | 0 | 3 | 2 | 0 | 1 | 34 | 8.5 |
| 24 | LOVE, Eyllia | 4-0 | | 93:45 | 23.4 | 9-17 | .529 | 2-2 | 1.000 | 11-16 | .688 | 8 | 13 | 21 | 5.3 | 12 | 0 | 0 | 7 | 1 | 2 | 31 | 7.8 |
| 20 | HERMOSA, Nerea | 4-3 | | 72:20 | 18.1 | 10-26 | .385 | 0-0 | .000 | 2-4 | .500 | 7 | 7 | 14 | 3.5 | 8 | 0 | 2 | 4 | 2 | 1 | 22 | 5.5 |
| 15 | CARTER, Avyonce | 2-0 | | 24:17 | 12.1 | 2-6 | .333 | 1-5 | .200 | 6-8 | .750 | 0 | 4 | 4 | 2.0 | 2 | 0 | 2 | 6 | 0 | 1 | 11 | 5.5 |
| 11 | WONE ARANAZ, Aixa | 4-1 | | 90:02 | 22.5 | 4-17 | .235 | 0-2 | .000 | 3-4 | .750 | 6 | 10 | 16 | 4.0 | 8 | 0 | 7 | 3 | 0 | 1 | 11 | 2.8 |
| 4 | BOYD, Anaya | 1-0 | | 02:03 | 2.1 | 0-1 | .000 | 0-0 | .000 | 0-0 | .000 | 0 | 1 | 1 | 1.0 | 1 | 0 | 0 | 1 | 0 | 1 | 0 | 0.0 |
| 14 | CLARK, Anisa | 1-0 | | 00:54 | 0.9 | 0-0 | .000 | 0-0 | .000 | 0-0 | .000 | 0 | 0 | 0 | 0.0 | 0 | 0 | 0 | 0 | 0 | 0 | 0 | 0.0 |
| Team | | | | | | | | | | | | 10 | 7 | 17 | | | | | 2 | | | | |
| Total | | 4 | | 825 | | 102-257 | .397 | 24-80 | .300 | 44-63 | .698 | 49 | 126 | 175 | 43.8 | 62 | 0 | 51 | 66 | 13 | 34 | 272 | 68.0 |
| Opponents | | 4 | | 825 | | 91-251 | .363 | 12-68 | .176 | 38-59 | .644 | 40 | 105 | 145 | 36.3 | 70 | 0 | 47 | 65 | 18 | 29 | 232 | 58.0 |

Team Statistics

| | GATECH | OPP |
|------------------------|----------------|---------------|
| Scoring | 272 | 232 |
| Points per game | 68.0 | 58.0 |
| Scoring margin | +10.0 | - |
| Field goals-att | 102-257 | 91-251 |
| Field goal pct | .397 | .363 |
| 3 point fg-att | 24-80 | 12-68 |
| 3-point FG pct | .300 | .176 |
| 3-pt FG made per game | 6.0 | 3.0 |
| Free throws-att | 44-63 | 38-59 |
| Free throw pct | .698 | .644 |
| F-Throws made per game | 11.0 | 9.5 |
| Rebounds | 175 | 145 |
| Rebounds per game | 43.8 | 36.3 |
| Rebounding margin | +7.5 | - |
| Assists | 51 | 47 |
| Assists per game | 12.8 | 11.8 |
| Turnovers | 66 | 65 |
| Turnovers per game | 16.5 | 16.3 |
| Turnover margin | -0.3 | - |
| Assist/turnover ratio | 0.8 | 0.7 |
| Steals | 34 | 29 |
| Steals per game | 8.5 | 7.3 |
| Blocks | 13 | 18 |
| Blocks per game | 3.3 | 4.5 |
| Winning streak | 2 | - |
| Home win streak | 2 | - |
| Attendance | 4800 | 0 |
| Home games-Avg/Game | 4-1200 | 0-0 |
| Neutral site-Avg/Game | - | 0-0 |

Team Results

| Date | Opponent | | Score | Att. |
|------------|----------------|-----|-------|------|
| 11/25/2020 | Georgia St. | W | 62-38 | 1200 |
| 11/29/2020 | Georgia | Lot | 69-75 | 1200 |
| 12/03/2020 | Tulane | W | 55-51 | 1200 |
| 12/09/2020 | Boston College | W | 86-68 | 1200 |

2020-21 ACC ONLY GEORGIA TECH STATISTICS



2020-21 Georgia Tech Women's Basketball Combined Team Statistics In Conference games

Page 1/1
as of Dec 09, 2020

Game Records

| Record | Overall | Home | Away | Neutral |
|----------------|---------|------|------|---------|
| ALL GAMES | 1-0 | 1-0 | 0-0 | 0-0 |
| CONFERENCE | 1-0 | 1-0 | 0-0 | 0-0 |
| NON-CONFERENCE | 0-0 | 0-0 | 0-0 | 0-0 |

Score by Periods

| Team | 1st | 2nd | 3rd | 4th | OT | TOT |
|--------------|-----|-----|-----|-----|----|-----|
| Georgia Tech | 27 | 24 | 23 | 12 | 0 | 86 |
| Opponents | 18 | 12 | 15 | 23 | 0 | 68 |

Team Box Score

| No. | Player | | | | Total | | 3-Point | | F-Throw | | Rebounds | | | | | | | | | | | |
|------------------|---------------------|----------|------------|------|--------------|-------------|--------------|-------------|--------------|-------------|-----------|-----------|-----------|-------------|-----------|----------|-----------|-----------|----------|-----------|-----------|-------------|
| | | GP-GS | MIN | AVG | FG-FGA | FG% | 3FG-FGA | 3FG% | FT-FTA | FT% | OFF | DEF | TOT | AVG | PF | DQ | A | TO | BLK | STL | PTS | AVG |
| 31 | LAHTINEN, Lotta-Maj | 1-1 | 37:08 | 37.1 | 11-16 | .688 | 5-8 | .625 | 0-0 | .000 | 1 | 6 | 7 | 7.0 | 1 | 0 | 5 | 4 | 0 | 8 | 27 | 27.0 |
| 13 | CUBAJ, Lorela | 1-1 | 30:57 | 30.9 | 5-11 | .455 | 0-1 | .000 | 6-8 | .750 | 0 | 7 | 7 | 7.0 | 0 | 0 | 2 | 1 | 3 | 3 | 16 | 16.0 |
| 00 | MCQUEEN, Loyal | 1-1 | 27:36 | 27.6 | 6-12 | .500 | 1-4 | .250 | 0-2 | .000 | 1 | 3 | 4 | 4.0 | 3 | 0 | 5 | 4 | 0 | 0 | 13 | 13.0 |
| 24 | LOVE, Eylia | 1-0 | 23:16 | 23.3 | 3-3 | 1.000 | 0-0 | .000 | 4-6 | .667 | 2 | 3 | 5 | 5.0 | 4 | 0 | 0 | 0 | 0 | 0 | 10 | 10.0 |
| 3 | BATES, Sarah | 1-1 | 36:13 | 36.2 | 3-9 | .333 | 3-9 | .333 | 0-0 | .000 | 0 | 5 | 5 | 5.0 | 1 | 0 | 1 | 0 | 0 | 0 | 9 | 9.0 |
| 15 | CARTER, Avyonce | 1-0 | 10:19 | 10.3 | 2-3 | .667 | 1-2 | .500 | 2-2 | 1.000 | 0 | 0 | 0 | 0.0 | 1 | 0 | 0 | 3 | 0 | 0 | 7 | 7.0 |
| 20 | HERMOSA, Nerea | 1-0 | 08:17 | 8.3 | 0-2 | .000 | 0-0 | .000 | 2-2 | 1.000 | 1 | 0 | 1 | 1.0 | 1 | 0 | 0 | 1 | 0 | 0 | 2 | 2.0 |
| 11 | WONE ARANAZ, Aixa | 1-1 | 26:14 | 26.2 | 1-4 | .250 | 0-0 | .000 | 0-0 | .000 | 2 | 0 | 2 | 2.0 | 1 | 0 | 2 | 1 | 0 | 1 | 2 | 2.0 |
| Team | | | | | | | | | | | 2 | | 2 | | | | | 1 | | | | |
| Total | | 1 | 200 | | 31-60 | .517 | 10-24 | .417 | 14-20 | .700 | 9 | 24 | 33 | 33.0 | 12 | 0 | 15 | 15 | 3 | 12 | 86 | 86.0 |
| Opponents | | 1 | 200 | | 28-65 | .431 | 5-18 | .278 | 7-8 | .875 | 12 | 20 | 32 | 32.0 | 21 | 0 | 15 | 17 | 3 | 6 | 68 | 68.0 |

Team Statistics

| | GATECH | OPP |
|------------------------|--------------|--------------|
| Scoring | 86 | 68 |
| Points per game | 86.0 | 68.0 |
| Scoring margin | +18.0 | - |
| Field goals-att | 31-60 | 28-65 |
| Field goal pct | .517 | .431 |
| 3 point fg-att | 10-24 | 5-18 |
| 3-point FG pct | .417 | .278 |
| 3-pt FG made per game | 10.0 | 5.0 |
| Free throws-att | 14-20 | 7-8 |
| Free throw pct | .700 | .875 |
| F-Throws made per game | 14.0 | 7.0 |
| Rebounds | 33 | 32 |
| Rebounds per game | 33.0 | 32.0 |
| Rebounding margin | +1.0 | - |
| Assists | 15 | 15 |
| Assists per game | 15.0 | 15.0 |
| Turnovers | 15 | 17 |
| Turnovers per game | 15.0 | 17.0 |
| Turnover margin | +2.0 | - |
| Assist/turnover ratio | 1.0 | 0.9 |
| Steals | 12 | 6 |
| Steals per game | 12.0 | 6.0 |
| Blocks | 3 | 3 |
| Blocks per game | 3.0 | 3.0 |
| Winning streak | 1 | - |
| Home win streak | 1 | - |
| Attendance | 1200 | 0 |
| Home games-Avg/Game | 1-1200 | 0-0 |
| Neutral site-Avg/Game | - | 0-0 |

Team Results

| Date | Opponent | Score | Att. |
|------------|----------------|---------|------|
| 12/09/2020 | Boston College | W 86-68 | 1200 |



2020-21 GEORGIA TECH BOX SCORES



Official Basketball Box Score - Final
Georgia State at Georgia Tech
11/25/20 McCamish Pavilion, Atlanta
Georgia Tech vs. Georgia State

Game Time: 12:00 PM
Game Duration: 1:51
Attendance: 1,200

Officials: Dee Koster, Felicia Young, Mark McDemery

Georgia State - 38

Record: 0-1

Box score for Georgia State showing player stats (NO. Name, Min, FG, 3P, FT, Rebounds, Fouls, TP, AS, TO, ST, Blocks, +/-) and team totals.

Shooting By Period and Technical Fouls for Georgia State.

Georgia Tech - 62

Record: 1-0

Box score for Georgia Tech showing player stats (NO. Name, Min, FG, 3P, FT, Rebounds, Fouls, TP, AS, TO, ST, Blocks, +/-) and team totals.

Shooting By Period and Technical Fouls for Georgia Tech.

Summary statistics: Biggest lead, Best Scoring Run, Lead Changes, Times Tied, Time with Lead.

Points from Turnovers, Paint, Second Chance, Fast Breaks, Bench.

Period by Period Scoring table.



Official Basketball Box Score - Final
Georgia at Georgia Tech
11/25/20 McCamish Pavilion, Atlanta
Georgia Tech vs. Georgia

Game Time: 2:00 PM
Game Duration: 2:11
Attendance: 1,200

Officials: Joseph Vaszly, Carla Fountain, Saif Ehab

Georgia - 75

Record: 2-0

Box score for Georgia showing player stats (NO. Name, Min, FG, 3P, FT, Rebounds, Fouls, TP, AS, TO, ST, Blocks, +/-) and team totals.

Shooting By Period and Technical Fouls for Georgia.

Georgia Tech - 69

Record: 1-1

Box score for Georgia Tech showing player stats (NO. Name, Min, FG, 3P, FT, Rebounds, Fouls, TP, AS, TO, ST, Blocks, +/-) and team totals.

Shooting By Period and Technical Fouls for Georgia Tech.

Summary statistics: Biggest lead, Best Scoring Run, Lead Changes, Times Tied, Time with Lead.

Points from Turnovers, Paint, Second Chance, Fast Breaks, Bench.

Period by Period Scoring table.



Official Basketball Box Score - Final
Tulane at Georgia Tech
12/3/20 McCamish Pavilion, Atlanta
Georgia Tech vs. Tulane

Game Time: 6:00 PM
Game Duration: 1:51
Attendance: 1,200

Officials: Jeffrey Smith, Fitzco Gasco-Stephens, Brandon Eterlein

Tulane - 51

Record: 2-1

Box score for Tulane showing player stats (NO. Name, Min, FG, 3P, FT, Rebounds, Fouls, TP, AS, TO, ST, Blocks, +/-) and team totals.

Shooting By Period and Technical Fouls for Tulane.

Georgia Tech - 55

Record: 2-1

Box score for Georgia Tech showing player stats (NO. Name, Min, FG, 3P, FT, Rebounds, Fouls, TP, AS, TO, ST, Blocks, +/-) and team totals.

Shooting By Period and Technical Fouls for Georgia Tech.

Summary statistics: Biggest lead, Best Scoring Run, Lead Changes, Times Tied, Time with Lead.

Points from Turnovers, Paint, Second Chance, Fast Breaks, Bench.

Period by Period Scoring table.



Official Basketball Box Score - Final
Boston College at Georgia Tech
12/3/20 McCamish Pavilion, Atlanta
Georgia Tech vs. Boston College

Game Time: 11:00 AM
Game Duration: 1:46
Attendance: 1,200

Officials: Mij Forsberg, Bryan Brunette, Maggie Tetterton

Boston College - 68

Record: 4-1 (0-1)

Box score for Boston College showing player stats (NO. Name, Min, FG, 3P, FT, Rebounds, Fouls, TP, AS, TO, ST, Blocks, +/-) and team totals.

Shooting By Period and Technical Fouls for Boston College.

Georgia Tech - 86

Record: 3-1 (1-0)

Box score for Georgia Tech showing player stats (NO. Name, Min, FG, 3P, FT, Rebounds, Fouls, TP, AS, TO, ST, Blocks, +/-) and team totals.

Shooting By Period and Technical Fouls for Georgia Tech.

Summary statistics: Biggest lead, Best Scoring Run, Lead Changes, Times Tied, Time with Lead.

Points from Turnovers, Paint, Second Chance, Fast Breaks, Bench.

Period by Period Scoring table.



HEAD COACH NELL FORTNER

2nd Season • Texas '82

Nell Fortner was named the sixth head coach of Georgia Tech women's basketball on April 9, 2019. One of the most successful coaches in women's basketball history, Fortner has compiled a 328-199 (.621) record as a head coach at the collegiate, professional and international levels. She has led teams to Big Ten (Purdue – 1997) and Southeastern Conference (Auburn – 2009) championships and, perhaps most notably, coached the United States national team to three international titles from 1997-2000, including the gold medal at the 2000 Summer Olympics in Sydney, Australia. Fortner is the winningest coach in the history of the USA women's basketball national team, having compiled a 101-14 (.878) record. In addition to the 2000 Olympics championship, she also led the team to the gold medal at the 1998 World Championship in Berlin, Germany and the 1998 William Jones Cup in Taipei, Taiwan. At the collegiate level, Fortner has 10 seasons of experience as a head coach – one at Purdue (1996-97), eight at Auburn (2004-12) and one at Georgia Tech (2019-20) – and has compiled a 185-129 (.587) overall record in the college ranks.

THE FORTNER FILE

PERSONAL

Education Texas, 1982 (Physical Education);
Stephen F. Austin, 1987 (Master's of Education)

COACHING EXPERIENCE

1983-86 Head Coach, Killen (Texas) H.S.
1986-87 Graduate Assistant, Stephen F. Austin
1987-90 Assistant Coach, Stephen F. Austin
1990-95 Assistant Coach, Louisiana Tech
1995-96 Assistant Coach, U.S. National Team
1996-97 Head Coach, Purdue
1997-2000 Head Coach, U.S. National Team
2000-03 Head Coach/General Manager, Indiana Fever
2004-12 Head Coach, Auburn
2019-Present Head Coach, Georgia Tech

COLLEGE COACHING RECORD

| SEASON | SCHOOL | RECORD | ACC FINISH | POSTSEASON |
|----------------|---------------------|--------------|------------|------------------------------|
| 1987-88 | Stephen F. Austin | 29-5 | -- | NCAA Tourn. 2nd rd. |
| 1988-89 | Stephen F. Austin | 30-4 | -- | NCAA Tourn. 2nd rd. |
| 1989-90 | Stephen F. Austin | 28-3 | -- | NCAA Tourn. 2nd rd. |
| 1990-91 | Louisiana Tech | 18-12 | -- | NCAA Tourn. 1st rd. |
| 1991-92 | Louisiana Tech | 20-10 | -- | NCAA Tourn. 1st rd. |
| 1992-93 | Louisiana Tech | 26-6 | -- | NCAA Tourn. Elite 8 |
| 1993-94 | Louisiana Tech | 31-4 | -- | NCAA Tourn. Runners-Up |
| 1994-95 | Louisiana Tech | 28-5 | -- | NCAA Tourn. Sweet 16 |
| 1996-97 | Purdue | 17-11 | -- | NCAA Tourn. 2nd rd. |
| 2004-05 | Auburn | 16-13 | -- | |
| 2005-06 | Auburn | 14-15 | -- | |
| 2006-07 | Auburn | 21-13 | -- | WNIT Quarterfinals |
| 2007-08 | Auburn | 20-12 | -- | NCAA Tournament |
| 2008-09 | Auburn | 30-4 | -- | NCAA Tourn. 2nd rd. |
| 2009-10 | Auburn | 15-16 | -- | |
| 2010-11 | Auburn | 16-16 | -- | WNIT 2nd rd. |
| 2011-12 | Auburn | 13-17 | -- | |
| 2019-20 | Georgia Tech | 20-11 | 7th | Canceled due to Covid |
| 2020-21 | Georgia Tech | 3-1 | | |

Bold = Head Coach

HEAD COACH (10 SEASONS) 185-129 (.587)

ASSISTANT COACH (8 SEASONS) 210-49 (.811)

18 OVERALL SEASONS 395-178 (.689)

Stephen F. Austin (3 seasons) 87-12 (.879)
Louisiana Tech (5 seasons) 123-37 (.769)
Purdue (1 season) 17-11 (.607)
Auburn (8 seasons) 145-106 (.578)
Georgia Tech (2 seasons) 23-12 (.645)

FORTNER PROFESSIONAL COACHING

PROFESSIONAL COACHING EXPERIENCE

| SEASON | TEAM | RECORD |
|------------------|-----------------------|---------------|
| 1997-2000 | USA Basketball | 101-14 |
| 2001 | Indiana Fever | 10-22 |
| 2002 | Indiana Fever | 16-16 |
| 2003 | Indiana Fever | 16-18 |

Overall with U.S. national team 101-14 (.878)

Overall with Indiana Fever 42-56 (.429)

USA WOMEN'S BASKETBALL TOURNAMENT MEDALS

| Tournament | Record | Place |
|------------------------------|--------|--------|
| 2000 Olympic Games | 8-0 | Gold |
| 1999 Pan American Games | 4-3 | Bronze |
| 1998 FIBA World Championship | 9-0 | Gold |
| 1998 R. William Jones Cup | 5-0 | Gold |

FORTNER HEAD COACHING EXPERIENCE

| | |
|-----------|---|
| 1996-97 | Purdue (17-11, 12-4 Big Ten - Big Ten regular-season champion, NCAA Tournament) |
| 1997-2000 | U.S. National Team (101-14) |
| 2001 | Indiana Fever (10-22) |
| 2002 | Indiana Fever (16-16) |
| 2003 | Indiana Fever (16-18) |
| 2004-05 | Auburn (16-13, 6-8 SEC) |
| 2005-06 | Auburn (14-15, 4-10 SEC) |
| 2006-07 | Auburn (21-13, 6-8 SEC) |
| 2007-08 | Auburn (20-12, 7-7 SEC - NCAA Tournament) |
| 2008-09 | Auburn (30-4, 12-2 SEC - SEC regular-season champion, NCAA Tournament) |
| 2009-10 | Auburn (15-16, 5-11 SEC) |
| 2010-11 | Auburn (16-16, 8-8 SEC - WNIT) |
| 2011-12 | Auburn (13-17, 5-11 SEC - WNIT) |
| 2019-20 | Georgia Tech (20-11, 10-8 ACC) |
| 2020-21 | Georgia Tech (3-1) |

Overall at Purdue 17-11 (.607)

Overall with U.S. national team 101-14 (.878)

Overall with Indiana Fever 42-56 (.429)

Overall at Auburn 145-106 (.578)

Overall as a college head coach 185-129 (.587)

Overall as a head coach 328-199 (.621)

CAREER STATS

Aixa Wone Aranaz

| Season | gp-gs | min/avg | Total | | 3-Point | | F-Throws | | Rebounds | | | | Scoring | | | | | | | |
|--------------|------------|----------------|-------------|-------------|------------|-------------|------------|-------------|----------|-----------|-----------|------------|----------|----------|----------|----------|----------|----------|-----------|------------|
| | | | fg-fga | pct | fg-fga | pct | ft-fta | pct | off | def | tot | avg | pf | fo | ast | to | blk | stl | pts | avg |
| 2020-21 | 4-1 | 91/22.8 | 4-17 | .235 | 0-2 | .000 | 3-4 | .750 | 6 | 10 | 16 | 4.0 | 8 | 0 | 7 | 3 | 0 | 1 | 11 | 2.8 |
| TOTAL | 4-1 | 91/22.8 | 4-17 | .235 | 0-2 | .000 | 3-4 | .750 | 6 | 10 | 16 | 4.0 | 8 | 0 | 7 | 3 | 0 | 1 | 11 | 2.8 |

Sarah Bates

| Season | gp-gs | min/avg | Total | | 3-Point | | F-Throws | | Rebounds | | | | Scoring | | | | | | | |
|--------------|-------------|-----------------|--------------|-------------|--------------|-------------|------------|-------------|----------|-----------|-----------|------------|-----------|----------|----------|----------|----------|----------|-----------|------------|
| | | | fg-fga | pct | fg-fga | pct | ft-fta | pct | off | def | tot | avg | pf | fo | ast | to | blk | stl | pts | avg |
| 2019-20 | 17-0 | 82/4.8 | 6-24 | .250 | 3-16 | .188 | 3-5 | .600 | 0 | 6 | 6 | 0.4 | 6 | 0 | 3 | 5 | 0 | 3 | 18 | 1.1 |
| 2020-21 | 4-4 | 130/32.5 | 11-29 | .379 | 10-27 | .370 | 2-2 | 1.000 | 0 | 14 | 14 | 3.5 | 4 | 0 | 3 | 2 | 0 | 1 | 34 | 8.5 |
| TOTAL | 21-4 | 212/10.1 | 17-53 | .321 | 13-43 | .302 | 5-7 | .714 | 0 | 20 | 20 | 1.0 | 10 | 0 | 6 | 7 | 0 | 4 | 52 | 2.5 |

Anaya Boyd

| Season | gp-gs | min/avg | Total | | 3-Point | | F-Throws | | Rebounds | | | | Scoring | | | | | | | |
|--------------|------------|--------------|------------|-------------|------------|-------------|------------|-------------|----------|----------|----------|------------|----------|----------|----------|----------|----------|----------|----------|------------|
| | | | fg-fga | pct | fg-fga | pct | ft-fta | pct | off | def | tot | avg | pf | fo | ast | to | blk | stl | pts | avg |
| 2020-21 | 1-0 | 2/2.0 | 0-1 | .000 | 0-0 | .000 | 0-0 | .000 | 0 | 1 | 1 | 1.0 | 1 | 0 | 0 | 1 | 0 | 1 | 0 | 0.0 |
| TOTAL | 1-0 | 2/2.0 | 0-1 | .000 | 0-0 | .000 | 0-0 | .000 | 0 | 1 | 1 | 1.0 | 1 | 0 | 0 | 1 | 0 | 1 | 0 | 0.0 |

Avyonce Carter

| Season | gp-gs | min/avg | Total | | 3-Point | | F-Throws | | Rebounds | | | | Scoring | | | | | | | |
|--------------|------------|----------------|------------|-------------|------------|-------------|------------|-------------|----------|----------|----------|------------|----------|----------|----------|----------|----------|----------|-----------|------------|
| | | | fg-fga | pct | fg-fga | pct | ft-fta | pct | off | def | tot | avg | pf | fo | ast | to | blk | stl | pts | avg |
| 2020-21 | 2-0 | 24/12.0 | 2-6 | .333 | 1-5 | .200 | 6-8 | .750 | 0 | 4 | 4 | 2.0 | 2 | 0 | 2 | 6 | 0 | 1 | 11 | 5.5 |
| TOTAL | 2-0 | 24/12.0 | 2-6 | .333 | 1-5 | .200 | 6-8 | .750 | 0 | 4 | 4 | 2.0 | 2 | 0 | 2 | 6 | 0 | 1 | 11 | 5.5 |

Anisa Clark

| Season | gp-gs | min/avg | Total | | 3-Point | | F-Throws | | Rebounds | | | | Scoring | | | | | | | |
|--------------|------------|--------------|------------|-------------|------------|-------------|------------|-------------|----------|----------|----------|------------|----------|----------|----------|----------|----------|----------|----------|------------|
| | | | fg-fga | pct | fg-fga | pct | ft-fta | pct | off | def | tot | avg | pf | fo | ast | to | blk | stl | pts | avg |
| 2020-21 | 1-0 | 1/1.0 | 0-0 | .000 | 0-0 | .000 | 0-0 | .000 | 0 | 0 | 0 | 0.0 | 0 | 0 | 0 | 0 | 0 | 0 | 0 | 0.0 |
| TOTAL | 1-0 | 1/1.0 | 0-0 | .000 | 0-0 | .000 | 0-0 | .000 | 0 | 0 | 0 | 0.0 | 0 | 0 | 0 | 0 | 0 | 0 | 0 | 0.0 |

Lorela Cubaj

| Season | gp-gs | min/avg | Total | | 3-Point | | F-Throws | | Rebounds | | | | Scoring | | | | | | | |
|--------------|--------------|------------------|----------------|-------------|--------------|-------------|---------------|-------------|------------|------------|------------|------------|------------|----------|------------|------------|------------|------------|------------|------------|
| | | | fg-fga | pct | fg-fga | pct | ft-fta | pct | off | def | tot | avg | pf | fo | ast | to | blk | stl | pts | avg |
| 2017-18 | 34-32 | 701/20.6 | 57-173 | .329 | 1-6 | .167 | 12-26 | .462 | 46 | 104 | 150 | 4.4 | 72 | 1 | 50 | 52 | 26 | 46 | 127 | 3.7 |
| 2018-19 | 30-29 | 851/28.4 | 90-220 | .409 | 1-4 | .250 | 28-56 | .500 | 70 | 149 | 219 | 7.3 | 96 | 2 | 59 | 70 | 31 | 44 | 209 | 7.0 |
| 2019-20 | 31-30 | 1060/34.2 | 128-285 | .449 | 7-25 | .280 | 48-83 | .578 | 64 | 176 | 240 | 7.7 | 88 | 1 | 76 | 59 | 37 | 36 | 311 | 10.0 |
| 2020-21 | 4-4 | 133/33.2 | 25-59 | .424 | 1-6 | .167 | 11-16 | .688 | 9 | 41 | 50 | 12.5 | 8 | 0 | 9 | 8 | 9 | 10 | 62 | 15.5 |
| TOTAL | 99-95 | 2745/27.7 | 300-737 | .407 | 10-41 | .244 | 99-181 | .547 | 189 | 470 | 659 | 6.7 | 264 | 4 | 194 | 189 | 103 | 136 | 709 | 7.2 |

Nerea Hermosa

| Season | gp-gs | min/avg | Total | | 3-Point | | F-Throws | | Rebounds | | | | Scoring | | | | | | | |
|--------------|--------------|-----------------|---------------|-------------|------------|-------------|--------------|-------------|-----------|-----------|------------|------------|-----------|----------|-----------|-----------|-----------|-----------|------------|------------|
| | | | fg-fga | pct | fg-fga | pct | ft-fta | pct | off | def | tot | avg | pf | fo | ast | to | blk | stl | pts | avg |
| 2019-20 | 31-15 | 664/21.4 | 89-165 | .539 | 0-0 | .000 | 25-44 | .568 | 57 | 69 | 126 | 4.1 | 59 | 1 | 24 | 49 | 21 | 19 | 203 | 6.5 |
| 2020-21 | 4-3 | 73/18.3 | 10-26 | .385 | 0-0 | .000 | 2-4 | .500 | 7 | 7 | 14 | 3.5 | 8 | 0 | 2 | 4 | 2 | 1 | 22 | 5.5 |
| TOTAL | 35-18 | 737/21.1 | 99-191 | .518 | 0-0 | .000 | 27-48 | .563 | 64 | 76 | 140 | 4.0 | 67 | 1 | 26 | 53 | 23 | 20 | 225 | 6.4 |

Lotta-Maj Lahtinen

| Season | gp-gs | min/avg | Total | | 3-Point | | F-Throws | | Rebounds | | | | Scoring | | | | | | | |
|--------------|--------------|------------------|----------------|-------------|---------------|-------------|---------------|-------------|-----------|------------|------------|------------|------------|----------|------------|------------|----------|------------|------------|------------|
| | | | fg-fga | pct | fg-fga | pct | ft-fta | pct | off | def | tot | avg | pf | fo | ast | to | blk | stl | pts | avg |
| 2018-19 | 30-5 | 602/20.1 | 53-159 | .333 | 13-49 | .265 | 23-31 | .742 | 31 | 34 | 65 | 2.2 | 67 | 3 | 66 | 65 | 2 | 48 | 142 | 4.7 |
| 2019-20 | 31-30 | 1015/32.7 | 108-275 | .393 | 29-101 | .287 | 36-66 | .545 | 52 | 81 | 133 | 4.3 | 70 | 0 | 81 | 68 | 4 | 42 | 281 | 9.1 |
| 2020-21 | 4-4 | 140/35.0 | 22-50 | .440 | 5-17 | .294 | 5-6 | .833 | 8 | 19 | 27 | 6.8 | 9 | 0 | 15 | 17 | 0 | 15 | 54 | 13.5 |
| TOTAL | 65-39 | 1757/27.0 | 183-484 | .378 | 47-167 | .281 | 64-103 | .621 | 91 | 134 | 225 | 3.5 | 146 | 3 | 162 | 150 | 6 | 105 | 477 | 7.3 |

CAREER STATS

Eylia Love

| Season | gp-gs | min/avg | Total | | 3-Point | | F-Throws | | Rebounds | | | | Scoring | | | | | | | |
|---------|-------|---------|--------|------|---------|-------|----------|------|----------|-----|-----|-----|---------|----|-----|----|-----|-----|-----|-----|
| | | | fg-fga | pct | fg-fga | pct | ft-fa | pct | off | def | tot | avg | pf | fo | ast | to | blk | stl | pts | avg |
| 2020-21 | 4-0 | 92/23.0 | 9-17 | .529 | 2-2 | 1.000 | 11-16 | .688 | 8 | 13 | 21 | 5.3 | 12 | 0 | 0 | 7 | 1 | 2 | 31 | 7.8 |
| TOTAL | 4-0 | 92/23.0 | 9-17 | .529 | 2-2 | 1.000 | 11-16 | .688 | 8 | 13 | 21 | 5.3 | 12 | 0 | 0 | 7 | 1 | 2 | 31 | 7.8 |

Loyal McQueen

| Season | gp-gs | min/avg | Total | | 3-Point | | F-Throws | | Rebounds | | | | Scoring | | | | | | | |
|---------|-------|----------|--------|------|---------|------|----------|------|----------|-----|-----|-----|---------|----|-----|----|-----|-----|-----|------|
| | | | fg-fga | pct | fg-fga | pct | ft-fa | pct | off | def | tot | avg | pf | fo | ast | to | blk | stl | pts | avg |
| 2020-21 | 4-4 | 139/34.8 | 19-52 | .365 | 5-21 | .238 | 4-7 | .571 | 1 | 10 | 11 | 2.8 | 10 | 0 | 13 | 16 | 1 | 2 | 47 | 11.8 |
| TOTAL | 4-4 | 139/34.8 | 19-52 | .365 | 5-21 | .238 | 4-7 | .571 | 1 | 10 | 11 | 2.8 | 10 | 0 | 13 | 16 | 1 | 2 | 47 | 11.8 |



LOYAL McQUEEN #00

Freshman • 5'8" • Guard • Florence, S.C. • Wilson

THE McQUEEN FILE

Earned first collegiate start against Georgia State (11/25) and finished with 12 points, hitting four field goals, and three rebounds...Added 12 points against Georgia (11/29) and finished with a career-high three assists, while recording her first collegiate steal...Recorded third-straight game scoring in double-figures against Tulane (12/3) with 10 points, hitting four field goals including two three-pointers...Also recorded first collegiate block against the Green Wave and finished with four assists and a steal...Scored season-high 13 points in first ACC game against Boston College (12/9), going 6-for-12 from the field, and dished out season-best five assists.

KEY SEASON AVERAGES

| | | |
|-------------|------------|------------|
| Points | Rebounds | Assists |
| 11.8 | 2.8 | 3.3 |

CAREER & SEASON HIGHS

Points

Career: 13 vs. Boston College (12/9/20)

Field Goals

Career: 6 vs. Boston College (12/9/20)

Field Goals Attempted

Career: 16 vs. Georgia (11/29/20)

3- Point Field Goals

Career: 2 vs. Tulane (12/3/20)

3- Point Field Goals Attempted

Career: 6, 2x, last vs. Tulane (12/3/20)

Free Throws

Career: 3 vs. Georgia State (11/25/20)

Free Throws Attempted

Career: 4 vs. Georgia State (11/25/20)

Rebounds

Career: 4, 2x, last vs. Boston College (12/9/20)

Assists

Career: 5 vs. Boston College (12/9/20)

Steals

Career: 1, 2x, last vs. Tulane (12/3/20)

Blocks

Career: 1 vs. Tulane (12/3/20)

Turnovers

Career: 4, 4x, last vs. Boston College (12/9/20)

Minutes

Career: 42 vs. Georgia (11/29/20)

Miscellaneous

| | | |
|--------------------------|--------|-------|
| | Career | 20-21 |
| Double-Doubles: | - | - |
| Double Figure Points: | 4 | 4 |
| Double Figure Rebounds: | - | - |
| Led Team In Points/Rebs: | - | - |
| 20+ Points: | - | - |

2020-21 GAME-BY-GAME

#00 MCQUEEN, Loyal

| Opponent | Date | GS | MIN | Total | | 3-Pointers | | Free throws | | Rebounds | | | | PF | A | T/O | BLK | STL | PTS | AVG | |
|----------------|------------|----|----------|---------------|--------------|-------------|-------------|-------------|------------|-------------|----------|-----------|-----------|------------|-----------|-----------|-----------|----------|----------|-----------|-------------|
| | | | | FG-FGA | PCT | 3FG-3FGA | PCT | FT-FTA | PCT | OFF | DEF | TOT | AVG | | | | | | | | |
| Georgia St. | 11/25/2020 | * | 31:10 | 4-13 | .308 | 1-6 | .167 | 3-4 | .750 | 0 | 3 | 3 | 3.0 | 1 | 1 | 4 | 0 | 0 | 12 | 12.0 | |
| Georgia | 11/29/2020 | * | 42:12 | 5-16 | .313 | 1-5 | .200 | 1-1 | 1.000 | 0 | 0 | 0 | 1.5 | 4 | 3 | 4 | 0 | 1 | 12 | 12.0 | |
| Tulane | 12/03/2020 | * | 38:01 | 4-11 | .364 | 2-6 | .333 | 0-0 | .000 | 0 | 4 | 4 | 2.3 | 2 | 4 | 4 | 1 | 1 | 10 | 11.3 | |
| Boston College | 12/09/2020 | * | 27:36 | 6-12 | .500 | 1-4 | .250 | 0-2 | .000 | 1 | 3 | 4 | 2.8 | 3 | 5 | 4 | 0 | 0 | 13 | 11.8 | |
| Totals | | | 4 | 138:60 | 19-52 | .365 | 5-21 | .238 | 4-7 | .571 | 1 | 10 | 11 | 2.8 | 10 | 13 | 16 | 1 | 2 | 47 | 11.8 |

Player Averages

| Games Played | Minutes/game | Points/game | FG Pct | 3FG Pct | FT Pct | Rebounds/game | Assists/game | Turnovers/game | Assist/Turnover ratio | Steals/game | Blocks/game |
|--------------|--------------|-------------|--------|---------|--------|---------------|--------------|----------------|-----------------------|-------------|-------------|
| 4 | 34.7 | 11.8 | 36.5 | 23.8 | 57.1 | 2.8 | 3.3 | 4.0 | 0.8 | 0.5 | 0.3 |



SARAH BATES

#3

Redshirt-Junior • 5'9" • Guard • Fresno, Calif. • Kansas State

THE BATES FILE

In Tech's season-opener against Georgia State (11/25), posted 12 points, hitting four three-pointers...Hit two three-pointers and pulled down six rebounds against Georgia (11/29)...Contributed nine points and five rebounds in Tech's ACC-opening win over Boston College (12/9).

KEY SEASON AVERAGES

Points **8.5** Rebounds **3.5** Assists **0.8**

CAREER & SEASON HIGHS

Points

Season: 12 vs. Georgia State (11/25/20)
 Career: 25, 2x, last at UC Davis (1/27/18) *

Field Goals

Season: 4 vs. Georgia State (11/25/20)
 Career: 9 at UC Davis (1/27/18) *

Field Goals Attempted

Season: 9 vs. Boston College (12/9/20)
 Career: 17 at UC Davis (1/27/18) *

3- Point Field Goals

Season: 4 vs. Georgia State (11/25/20)
 Career: 7 at UC Davis (1/27/18) *

3- Point Field Goals Attempted

Season: 9 vs. Boston College (12/9/20)
 Career: 12 at UC Davis (1/27/18) *

Free Throws

Season: 1, 2x, last vs. Tulane (12/3/20)
 Career: 12 at Northern Arizona (11/10/17) *

Free Throws Attempted

Season: 1, 2x, last vs. Tulane (12/3/20)
 Career: 16 at Northern Arizona (11/10/17) *

Rebounds

Season: 6 vs. Georgia (11/29/20)
 Career: 7 vs. San Diego State (12/22/17) *

Assists

Season: 2 vs. Georgia (11/29/20)
 Career: 6 vs. Hawai'i (2/3/18) *

Steals

Season: 1 vs. Tulane (12/3/20)
 Career: 3 vs. CSUN (1/31/18) *

Blocks

Season:
 Career: 1, 3x, last at Hawai'i (3/1/18) *

Turnovers

Season: 1, 2x, last vs. Georgia (11/29/20)
 Career: 5, 2x, last at Cal Poly (2/21/18) *

Minutes

Season: 36 vs. Boston College (12/9/20)
 Career: 40, 2x, last at Cal Poly (2/21/18) *

Miscellaneous

| | | |
|--------------------------|--------|-------|
| | Career | 19-20 |
| Double-Doubles: | - | - |
| Double Figure Points: | 1 | 1 |
| Double Figure Rebounds: | - | - |
| Led Team In Points/Rebs: | - | - |
| 20+ Points: | - | - |

* Career-high set at UC Santa Barbara

2020-21 GAME-BY-GAME

#3 BATES, Sarah

| Opponent | Date | GS | MIN | Total | | 3-Pointers | | Free throws | | Rebounds | | | | PF | A | T/O | BLK | STL | PTS | AVG |
|----------------|------------|----|-----------------|--------------|-------------|--------------|-------------|-------------|--------------|----------|-----------|-----------|------------|----------|----------|----------|----------|----------|-----------|------------|
| | | | | FG-FGA | PCT | 3FG-3FGA | PCT | FT-FTA | PCT | OFF | DEF | TOT | AVG | | | | | | | |
| Georgia St. | 11/25/2020 | * | 26:34 | 4-6 | .667 | 4-6 | .667 | 0-0 | .000 | 0 | 1 | 1 | 1.0 | 1 | 0 | 1 | 0 | 0 | 12 | 12.0 |
| Georgia | 11/29/2020 | * | 30:10 | 3-7 | .429 | 2-6 | .333 | 1-1 | 1.000 | 0 | 6 | 6 | 3.5 | 2 | 2 | 1 | 0 | 0 | 9 | 10.5 |
| Tulane | 12/03/2020 | * | 35:53 | 1-7 | .143 | 1-6 | .167 | 1-1 | 1.000 | 0 | 2 | 2 | 3.0 | 0 | 0 | 0 | 0 | 1 | 4 | 8.3 |
| Boston College | 12/09/2020 | * | 36:13 | 3-9 | .333 | 3-9 | .333 | 0-0 | .000 | 0 | 5 | 5 | 3.5 | 1 | 1 | 0 | 0 | 0 | 9 | 8.5 |
| Totals | | | 4 128:50 | 11-29 | .379 | 10-27 | .370 | 2-2 | 1.000 | 0 | 14 | 14 | 3.5 | 4 | 3 | 2 | 0 | 1 | 34 | 8.5 |

Player Averages

| Games Played | Minutes/game | Points/game | FG Pct | 3FG Pct | FT Pct | Rebounds/game | Assists/game | Turnovers/game | Assist/Turnover ratio | Steals/game | Blocks/game |
|--------------|--------------|-------------|--------|---------|--------|---------------|--------------|----------------|-----------------------|-------------|-------------|
| 4 | 32.2 | 8.5 | 37.9 | 37.0 | 100.0 | 3.5 | 0.8 | 0.5 | 1.5 | 0.3 | 0.0 |



ANAYA BOYD

#4

Freshman • 5'10" • Guard • McDonough, Ga. • Lovejoy

THE BOYD FILE

Took the floor in her first collegiate appearance against Tulane (12/3) and pulled down a rebound and steal.

KEY SEASON AVERAGES

Points Rebounds Steals
0.0 **1.0** **1.0**

CAREER & SEASON HIGHS

Points

Career:

Field Goals

Career:

Field Goals Attempted

Career: 1 vs. Tulane (12/3/20)

3- Point Field Goals

Career:

3- Point Field Goals Attempted

Career:

Free Throws

Career:

Free Throws Attempted

Career:

Rebounds

Career: 1 vs. Tulane (12/3/20)

Assists

Career:

Steals

Career: 1 vs. Tulane (12/3/20)

Blocks

Career:

Turnovers

Career: 1 vs. Tulane (12/3/20)

Minutes

Career: 2 vs. Tulane (12/3/20)

Miscellaneous

| | Career | 20-21 |
|--------------------------|--------|-------|
| Double-Doubles: | - | - |
| Double Figure Points: | - | - |
| Double Figure Rebounds: | - | - |
| Led Team In Points/Rebs: | - | - |
| 20+ Points: | - | - |

2020-21 GAME-BY-GAME

#4 BOYD, Anaya

| Opponent | Date | GS | | Total | | 3-Pointers | | Free throws | | Rebounds | | | | PF | | A | | BLK | | STL | | PTS | | AVG | |
|---------------|------------|----------|--------------|------------|-------------|------------|------------|-------------|------------|-------------|----------|----------|----------|------------|----------|----------|----------|----------|----------|----------|----------|----------|------------|-----|--|
| | | MIN | FG | FGA | PCT | 3FG | 3FGA | PCT | FT | FTA | PCT | OFF | DEF | TOT | AVG | PF | A | T/O | BLK | STL | PTS | AVG | | | |
| Tulane | 12/03/2020 | 02:03 | 0-1 | 0-1 | .000 | 0-0 | 0-0 | .000 | 0-0 | .000 | 0 | 1 | 1 | 1.0 | 1 | 0 | 1 | 0 | 1 | 0 | 1 | 0 | 0.0 | | |
| Totals | | 0 | 02:03 | 0-1 | .000 | 0-0 | 0-0 | .000 | 0-0 | .000 | 0 | 1 | 1 | 1.0 | 1 | 0 | 1 | 0 | 1 | 0 | 1 | 0 | 0.0 | | |

Player Averages

| Games Played | Minutes/ game | Points/ game | FG Pct | 3FG Pct | FT Pct | Rebounds/ game | Assists/ game | Turnovers/ game | Assist/Turnover ratio | Steals/ game | Blocks/ game |
|--------------|---------------|--------------|--------|---------|--------|----------------|---------------|-----------------|-----------------------|--------------|--------------|
| 1 | 2.1 | 0.0 | 0.0 | 0.0 | 0.0 | 1.0 | 0.0 | 1.0 | 0.0 | 1.0 | 0.0 |

**AIXA WONE ARANAZ****#11**

Sophomore • 6'3" • Forward • Pamplona, Spain • Ohio State

THE WONE ARANAZ FILE

Saw first action as a Yellow Jacket against Georgia State (11/25) and finished with five rebounds and two points...Pitched in five points, hitting 3-of-4 from the free throw line, and five rebounds against Georgia (11/29)...Grabbed four rebounds against Tulane (12/3)...Earned first start as a Yellow Jacket in ACC-opening win over Boston College (12/9).

KEY SEASON AVERAGES

| | | |
|------------|------------|------------|
| Points | Rebounds | Assists |
| 2.8 | 4.0 | 1.8 |

CAREER & SEASON HIGHS**Points**

Season: 5 vs. Georgia (11/29/20)

Career: 12 vs. Ohio (11/17/19)*

Field Goals

Season: 1, 4x, last vs. Boston College (12/9/20)

Career: 5 vs. Ohio (11/17/19)*

Field Goals Attempted

Season: 6 vs. Georgia (11/29/20)

Career: 8 vs. Ohio (11/17/19)*

3- Point Field Goals

Season:

Career: 1, 2x, last at Sacramento St. (12/17/19)*

3- Point Field Goals Attempted

Season: 2 vs. Georgia (11/29/20)

Career: 2, 4x, last vs. Georgia (11/29/20)

Free Throws

Season: 3 vs. Georgia (11/29/20)

Career: 3 vs. Georgia (11/29/20)

Free Throws Attempted

Season: 4 vs. Georgia (11/29/20)

Career: 4, 2x, last vs. Georgia (11/29/20)

Rebounds

Season: 5, 2x, last vs. Georgia (11/29/20)

Career: 6 at Sacramento St. (12/17/19)*

Assists

Season: 2, 3x, last vs. Boston College (12/9/20)

Career: 3, 2x, last at Sacramento St. (12/17/19)*

Steals

Season: 1 vs. Boston College (12/9/20)

Career: 2 vs. Valparaiso (11/10/19)*

Blocks

Season:

Career: 1 vs. UConn (11/24/19)*

Turnovers

Season: 1, 3x, last vs. Boston College (12/9/20)

Career: 4 at Sacramento St. (12/17/19)*

Minutes

Season: 26, 2x, last vs. Boston College (12/9/20)

Career: 28 at Sacramento St. (12/17/19)*

Miscellaneous

| | | |
|--------------------------|--------|-------|
| | Career | 20-21 |
| Double-Doubles: | - | - |
| Double Figure Points: | 1 | - |
| Double Figure Rebounds: | - | - |
| Led Team In Points/Rebs: | - | - |
| 20+ Points: | - | - |

*Career high at Ohio State

2020-21 GAME-BY-GAME**#11 WONE ARANAZ, Aixa**

| Opponent | Date | GS | MIN | Total | | 3-Pointers | | Free throws | | Rebounds | | | | PF | | | | PTS | AVG | |
|----------------|------------|----------|--------------|-------------|-------------|------------|-------------|-------------|-------------|----------|-----------|-----------|------------|----------|----------|----------|----------|----------|-----------|------------|
| | | | | FG-FGA | PCT | 3FG-3FGA | PCT | FT-FTA | PCT | OFF | DEF | TOT | AVG | A | T/O | BLK | STL | | | |
| Georgia St. | 11/25/2020 | | 17:51 | 1-5 | .200 | 0-0 | .000 | 0-0 | .000 | 2 | 3 | 5 | 5.0 | 3 | 2 | 1 | 0 | 0 | 2 | 2.0 |
| Georgia | 11/29/2020 | | 26:10 | 1-6 | .167 | 0-2 | .000 | 3-4 | .750 | 0 | 5 | 5 | 5.0 | 2 | 2 | 1 | 0 | 0 | 5 | 3.5 |
| Tulane | 12/03/2020 | | 19:47 | 1-2 | .500 | 0-0 | .000 | 0-0 | .000 | 2 | 2 | 4 | 4.7 | 2 | 1 | 0 | 0 | 0 | 2 | 3.0 |
| Boston College | 12/09/2020 | * | 26:14 | 1-4 | .250 | 0-0 | .000 | 0-0 | .000 | 2 | 0 | 2 | 4.0 | 1 | 2 | 1 | 0 | 1 | 2 | 2.8 |
| Totals | | 1 | 90:02 | 4-17 | .235 | 0-2 | .000 | 3-4 | .750 | 6 | 10 | 16 | 4.0 | 8 | 7 | 3 | 0 | 1 | 11 | 2.8 |

Player Averages

| Games Played | Minutes/game | Points/game | FG Pct | 3FG Pct | FT Pct | Rebounds/game | Assists/game | Turnovers/game | Assist/Turnover ratio | Steals/game | Blocks/game |
|--------------|--------------|-------------|--------|---------|--------|---------------|--------------|----------------|-----------------------|-------------|-------------|
| 4 | 22.5 | 2.8 | 23.5 | 0.0 | 75.0 | 4.0 | 1.8 | 0.8 | | 2.3 | 0.3 |



KONDALIA MONTGOMERY #12

Junior • 5'7" • Guard • Tacoma, Wash. • Lincoln

THE MONTGOMERY FILE

KEY SEASON AVERAGES (2019-20)

Points Rebounds Assists
0.6 **0.7** **0.3**

CAREER & SEASON HIGHS

Points

Season: 4 vs. ETSU (12/15/19)
 Career: 6 vs. North Carolina (3/7/19)

Field Goals

Season: 1, 2x, last vs. Notre Dame (2/2/20)
 Career: 2 vs. North Carolina (3/7/19)

Field Goals Attempted

Season: 3 vs. Notre Dame (2/2/20)
 Career: 3, 2x, last vs. Notre Dame (2/2/20)

3- Point Field Goals

Season:
 Career:

3- Point Field Goals Attempted

Season: 1 vs. Notre Dame (2/2/20)
 Career: 1 vs. Notre Dame (2/2/20)

Free Throws

Season: 3 at Pitt (2/6/20)
 Career: 3 at Pitt (2/6/20)

Free Throws Attempted

Season: 4 at Pitt (2/6/20)
 Career: 4 at Pitt (2/6/20)

Rebounds

Season: 5 at Pitt (2/6/20)
 Career: 5 at Pitt (2/6/20)

Assists

Season: 1, 5x, last vs. Louisville (2/20/20)
 Career: 1, 7x, last vs. Louisville (2/20/20)

Steals

Season: 1 vs. Houston (11/5/19)
 Career: 1, 2x, last vs. Houston (11/5/19)

Blocks

Season:
 Career:

Turnovers

Season: 3 vs. Houston (11/5/19)
 Career: 3 vs. Houston (11/5/19)

Minutes

Season: 12 vs. Seton Hall (11/28/19)
 Career: 15 vs. North Carolina (3/7/19)

Miscellaneous

| | | |
|--------------------------|--------|-------|
| | Career | 19-20 |
| Double-Doubles: | - | - |
| Double Figure Points: | - | - |
| Double Figure Rebounds: | - | - |
| Led Team In Points/Rebs: | - | - |

2019-20 GAME-BY-GAME

#12 MONTGOMERY, Kondalia

| Opponent | Date | GS | MIN | Total | | 3-Pointers | | Free throws | | Rebounds | | | | PF | A | T/O | BLK | STL | PTS | AVG |
|------------------|------------|----------|--------------|------------|-------------|------------|-------------|-------------|-------------|----------|----------|-----------|------------|-----------|----------|----------|----------|----------|-----------|------------|
| | | | | FG-FGA | PCT | 3FG-3FGA | PCT | FT-FTA | PCT | OFF | DEF | TOT | AVG | | | | | | | |
| Houston | 11/05/2019 | | 12:16 | 0-0 | .000 | 0-0 | .000 | 0-0 | .000 | 0 | 0 | 0 | 0.0 | 2 | 0 | 3 | 0 | 1 | 0 | 0.0 |
| Grambling | 11/10/2019 | | 04:30 | 0-0 | .000 | 0-0 | .000 | 0-0 | .000 | 0 | 1 | 1 | 0.5 | 0 | 1 | 1 | 0 | 0 | 0 | 0.0 |
| at Georgia | 11/17/2019 | | 02:05 | 0-0 | .000 | 0-0 | .000 | 0-0 | .000 | 0 | 0 | 0 | 0.3 | 0 | 0 | 1 | 0 | 0 | 0 | 0.0 |
| Georgia St. | 11/20/2019 | | 05:18 | 0-0 | .000 | 0-0 | .000 | 1-2 | .500 | 0 | 0 | 0 | 0.3 | 0 | 1 | 0 | 0 | 0 | 1 | 0.3 |
| vs Seton Hall | 11/28/2019 | | 12:10 | 0-2 | .000 | 0-0 | .000 | 0-2 | .000 | 0 | 0 | 0 | 0.2 | 2 | 1 | 0 | 0 | 0 | 0 | 0.2 |
| vs Rutgers | 11/30/2019 | | 00:02 | 0-0 | .000 | 0-0 | .000 | 0-0 | .000 | 0 | 0 | 0 | 0.2 | 1 | 0 | 0 | 0 | 0 | 0 | 0.2 |
| Wisconsin | 12/05/2019 | | 02:56 | 0-0 | .000 | 0-0 | .000 | 0-0 | .000 | 0 | 1 | 1 | 0.3 | 1 | 0 | 0 | 0 | 0 | 0 | 0.1 |
| at Kennesaw St. | 12/08/2019 | | 03:06 | 0-0 | .000 | 0-0 | .000 | 0-0 | .000 | 0 | 0 | 0 | 0.3 | 0 | 0 | 0 | 0 | 0 | 0 | 0.1 |
| ETSU | 12/15/2019 | | 09:06 | 1-1 | 1.000 | 0-0 | .000 | 2-2 | 1.000 | 0 | 0 | 0 | 0.2 | 1 | 0 | 0 | 0 | 0 | 4 | 0.6 |
| vs Rice | 12/21/2019 | | 00:02 | 0-0 | .000 | 0-0 | .000 | 0-0 | .000 | 0 | 0 | 0 | 0.2 | 0 | 0 | 0 | 0 | 0 | 0 | 0.5 |
| at Syracuse | 01/16/2020 | | 06:48 | 0-0 | .000 | 0-0 | .000 | 0-0 | .000 | 1 | 0 | 1 | 0.3 | 2 | 1 | 0 | 0 | 0 | 0 | 0.5 |
| Boston College | 01/19/2020 | | 00:58 | 0-1 | .000 | 0-0 | .000 | 0-0 | .000 | 1 | 0 | 1 | 0.3 | 0 | 0 | 0 | 0 | 0 | 0 | 0.4 |
| Notre Dame | 02/02/2020 | | 06:18 | 1-3 | .333 | 0-1 | .000 | 0-0 | .000 | 2 | 0 | 2 | 0.5 | 1 | 0 | 0 | 0 | 0 | 2 | 0.5 |
| at Pittsburgh | 02/06/2020 | | 10:08 | 0-0 | .000 | 0-0 | .000 | 3-4 | .750 | 4 | 1 | 5 | 0.8 | 2 | 0 | 0 | 0 | 0 | 3 | 0.7 |
| at Virginia Tech | 02/13/2020 | | 00:55 | 0-0 | .000 | 0-0 | .000 | 0-0 | .000 | 0 | 0 | 0 | 0.7 | 0 | 0 | 0 | 0 | 0 | 0 | 0.7 |
| Louisville | 02/20/2020 | | 10:00 | 0-2 | .000 | 0-0 | .000 | 0-0 | .000 | 1 | 0 | 1 | 0.8 | 1 | 1 | 0 | 0 | 0 | 0 | 0.6 |
| Florida St. | 02/23/2020 | | 03:19 | 0-0 | .000 | 0-0 | .000 | 0-0 | .000 | 0 | 0 | 0 | 0.7 | 0 | 0 | 0 | 0 | 0 | 0 | 0.6 |
| Totals | | 0 | 89:57 | 2-9 | .222 | 0-1 | .000 | 6-10 | .600 | 9 | 3 | 12 | 0.7 | 13 | 5 | 5 | 0 | 1 | 10 | 0.6 |

Player Averages

| Games Played | Minutes/ game | Points/ game | FG Pct | 3FG Pct | FT Pct | Rebounds/ game | Assists/ game | Turnovers/ game | Assist/Turnover ratio | Steals/ game | Blocks/ game |
|--------------|---------------|--------------|--------|---------|--------|----------------|---------------|-----------------|-----------------------|--------------|--------------|
| 17 | 5.3 | 0.6 | 22.2 | 0.0 | 60.0 | 0.7 | 0.3 | 0.3 | 1.0 | 0.1 | 0.0 |



LORELA CUBAJ #13
 Senior • 6'4" • Forward • Terni, Italy • Istituto Paritario G. Parini

THE CUBAJ FILE

Blocked a career-high four shots and pulled down a career-best 14 rebounds in season-opener against Georgia State (11/25)...Led Tech with a double-double against Georgia (11/29), finishing with a team-best 20 rebounds and 13 assists...Tied career-best hitting eight field goals against the Lady Bulldogs... Recorded second-straight double-double against Tulane (12/3) with 18 points and a career-high 16 rebounds...Has pulled down double-figure rebounds in all three games and led the Jackets on the glass in each...Dropped 16 points and hit career-high six free throws in ACC win over Boston College (12/9).

KEY SEASON AVERAGES

Points Rebounds Assists
15.5 12.5 2.3

CAREER & SEASON HIGHS

Points

Season: 20 vs. Georgia (11/29/20)
 Career: 21 vs. Wake Forest (2/9/20)

Field Goals

Season: 8, 2x, last vs. Tulane (12/3/20)
 Career: 8, 8x, last vs. Tulane (12/3/20)

Field Goals Attempted

Season: 20 vs. Georgia (11/29/20)
 Career: 20 vs. Georgia (11/29/20)

3- Point Field Goals

Season: 1 vs. Georgia (11/29/20)
 Career: 2 vs. Virginia (12/29/19)

3- Point Field Goals Attempted

Season: 3 vs. Georgia (11/29/20)
 Career: 4, 2x, last vs. Virginia (12/29/19)

Free Throws

Season: 6 vs. Boston College (12/9/20)
 Career: 6 vs. Boston College (12/9/20)

Free Throws Attempted

Season: 8 vs. Boston College (12/9/20)
 Career: 11 vs. Duke (1/10/19)

Rebounds

Season: 16 vs. Tulane (12/3/20)
 Career: 16 vs. Tulane (12/3/20)

Assists

Season: 4 vs. Georgia State (11/25/20)
 Career: 7, 2x, last vs. Seton Hall (11/28/19)

Steals

Season: 4 vs. Georgia (11/29/20)
 Career: 5, twice

Blocks

Season: 4 vs. Georgia State (11/25/20)
 Career: 4 vs. Georgia State (11/25/20)

Turnovers

Season: 3 vs. Georgia (11/29/20)
 Career: 7 vs. Houston (11/5/19)

Minutes

Season: 37 vs. Georgia (11/29/20)
 Career: 50 at Houston (11/9/18)

Miscellaneous

| | | |
|--------------------------|--------|-------|
| | Career | 20-21 |
| Double-Doubles: | 11 | 2 |
| Double Figure Points: | 28 | 3 |
| Double Figure Rebounds: | 17 | 3 |
| Led Team In Points/Rebs: | 7/35 | 2/4 |
| 20+ Points: | 3 | 2 |

2020-21 GAME-BY-GAME

#13 CUBAJ, Lorela

| Opponent | Date | GS | MIN | Total | | 3-Pointers | | Free throws | | Rebounds | | | | PF | A | T/O | BLK | STL | PTS | AVG | | |
|----------------|------------|----|-------|----------|---------------|--------------|-------------|-------------|-------------|--------------|-------------|----------|-----------|-----------|-------------|----------|----------|----------|----------|-----------|-----------|-------------|
| | | | | FG-FGA | PCT | 3FG-3FGA | PCT | FT-FTA | PCT | OFF | DEF | TOT | AVG | | | | | | | | | |
| Georgia St. | 11/25/2020 | * | 30:27 | 4-10 | .400 | 0-2 | .000 | 0-1 | .000 | 1 | 13 | 14 | 14.0 | 2 | 4 | 2 | 4 | 2 | 8 | 8.0 | | |
| Georgia | 11/29/2020 | * | 37:20 | 8-20 | .400 | 1-3 | .333 | 3-5 | .600 | 4 | 9 | 13 | 13.5 | 3 | 2 | 3 | 1 | 4 | 20 | 14.0 | | |
| Tulane | 12/03/2020 | * | 35:22 | 8-18 | .444 | 0-0 | .000 | 2-2 | 1.000 | 4 | 12 | 16 | 14.3 | 3 | 1 | 2 | 1 | 1 | 18 | 15.3 | | |
| Boston College | 12/09/2020 | * | 30:57 | 5-11 | .455 | 0-1 | .000 | 6-8 | .750 | 0 | 7 | 7 | 12.5 | 0 | 2 | 1 | 3 | 3 | 16 | 15.5 | | |
| Totals | | | | 4 | 134:06 | 25-59 | .424 | 1-6 | .167 | 11-16 | .688 | 9 | 41 | 50 | 12.5 | 8 | 9 | 8 | 9 | 10 | 62 | 15.5 |

Player Averages

| Games Played | Minutes/game | Points/game | FG Pct | 3FG Pct | FT Pct | Rebounds/game | Assists/game | Turnovers/game | Assist/Turnover ratio | Steals/game | Blocks/game |
|--------------|--------------|-------------|--------|---------|--------|---------------|--------------|----------------|-----------------------|-------------|-------------|
| 4 | 33.5 | 15.5 | 42.4 | 16.7 | 68.8 | 12.5 | 2.3 | 2.0 | 1.1 | 2.5 | 2.3 |



ANISA CLARK

#14

Freshman • 5'7" • Guard • McDonough, Ga. • Union Grove

THE CLARK FILE

Took the floor in the final minute against Georgia State (11/25) in season-opening action.

KEY SEASON AVERAGES

Points Rebounds Assists
0.0 **0.0** **0.0**

CAREER & SEASON HIGHS

Points

Career:

Field Goals

Career:

Field Goals Attempted

Career:

3- Point Field Goals

Career:

3- Point Field Goals Attempted

Career:

Free Throws

Career:

Free Throws Attempted

Career:

Rebounds

Career:

Assists

Career:

Steals

Career:

Blocks

Career:

Turnovers

Career:

Minutes

Career: 0.9 vs. Georgia State (11/25/20)

Miscellaneous

| | | |
|--------------------------|--------|-------|
| | Career | 20-21 |
| Double-Doubles: | - | - |
| Double Figure Points: | - | - |
| Double Figure Rebounds: | - | - |
| Led Team In Points/Rebs: | - | - |
| 20+ Points: | - | - |

2020-21 GAME-BY-GAME

#14 CLARK, Anisa

| Opponent | Date | GS | MIN | Total | | 3-Pointers | | Free throws | | Rebounds | | | | PF | | A | | BLK | | STL | | PTS | | AVG |
|---------------|------------|----------|--------------|------------|-------------|------------|-------------|-------------|-------------|----------|----------|----------|------------|----------|----------|----------|----------|----------|----------|----------|----------|------------|--|-----|
| | | | | FG-FGA | PCT | 3FG-3FGA | PCT | FT-FTA | PCT | OFF | DEF | TOT | AVG | PF | A | T/O | BLK | STL | PTS | AVG | | | | |
| Georgia St. | 11/25/2020 | | 00:54 | 0-0 | .000 | 0-0 | .000 | 0-0 | .000 | 0 | 0 | 0 | 0.0 | 0 | 0 | 0 | 0 | 0 | 0 | 0 | 0 | 0.0 | | |
| Totals | | 0 | 00:54 | 0-0 | .000 | 0-0 | .000 | 0-0 | .000 | 0 | 0 | 0 | 0.0 | 0 | 0 | 0 | 0 | 0 | 0 | 0 | 0 | 0.0 | | |

Player Averages

| Games Played | Minutes/game | Points/game | FG Pct | 3FG Pct | FT Pct | Rebounds/game | Assists/game | Turnovers/game | Assist/Turnover ratio | Steals/game | Blocks/game |
|--------------|--------------|-------------|--------|---------|--------|---------------|--------------|----------------|-----------------------|-------------|-------------|
| 1 | 0.9 | 0.0 | 0.0 | 0.0 | 0.0 | 0.0 | 0.0 | 0.0 | 0.0 | 0.0 | 0.0 |



AVYONCE CARTER #15
 Freshman • 5'10" • Guard • Norcross, Ga. • Wesleyan

THE CARTER FILE

Pitched in four points at the free throw line in Tech's season-opener against Georgia State (11/25)...Contributed seven points in ACC win over Boston College (12/9), going 2-for-3 from the field, including a three-pointer.

KEY SEASON AVERAGES

Points **5.5** Rebounds **2.0** Assists **1.0**

CAREER & SEASON HIGHS

Points

Career: 7 vs. Boston College (12/9/20)

Field Goals

Career: 2 vs. Boston College (12/9/20)

Field Goals Attempted

Career: 3, 2x, last vs. Boston College (12/9/20)

3- Point Field Goals

Career: 1 vs. Boston College (12/9/20)

3- Point Field Goals Attempted

Career: 3 vs. Georgia State (11/25/20)

Free Throws

Career: 4 vs. Georgia State (11/25/20)

Free Throws Attempted

Career: 6 vs. Georgia State (11/25/20)

Rebounds

Career: 4 vs. Georgia State (11/25/20)

Assists

Career: 2 vs. Georgia State (11/25/20)

Steals

Career: 1 vs. Georgia State (11/25/20)

Blocks

Career:

Turnovers

Career: 3, 2x, last vs. Boston College (12/9/20)

Minutes

Career: 14 vs. Georgia State (11/25/20)

Miscellaneous

| | | |
|--------------------------|--------|-------|
| | Career | 20-21 |
| Double-Doubles: | - | - |
| Double Figure Points: | - | - |
| Double Figure Rebounds: | - | - |
| Led Team In Points/Rebs: | - | - |
| 20+ Points: | - | - |

2020-21 GAME-BY-GAME

#15 CARTER, Avyonce

| Opponent | Date | GS | MIN | Total | | 3-Pointers | | Free throws | | Rebounds | | | | PF | A | T/O | BLK | STL | PTS | AVG |
|----------------|------------|----------|--------------|------------|-------------|------------|-------------|-------------|-------------|----------|----------|----------|------------|----------|----------|----------|----------|----------|-----------|------------|
| | | | | FG-FGA | PCT | 3FG-3FGA | PCT | FT-FTA | PCT | OFF | DEF | TOT | AVG | | | | | | | |
| Georgia St. | 11/25/2020 | | 13:58 | 0-3 | .000 | 0-3 | .000 | 4-6 | .667 | 0 | 4 | 4 | 4.0 | 1 | 2 | 3 | 0 | 1 | 4 | 4.0 |
| Boston College | 12/09/2020 | | 10:19 | 2-3 | .667 | 1-2 | .500 | 2-2 | 1.000 | 0 | 0 | 0 | 2.0 | 1 | 0 | 3 | 0 | 0 | 7 | 5.5 |
| Totals | | 0 | 24:17 | 2-6 | .333 | 1-5 | .200 | 6-8 | .750 | 0 | 4 | 4 | 2.0 | 2 | 2 | 6 | 0 | 1 | 11 | 5.5 |

Player Averages

| Games Played | Minutes/game | Points/game | FG Pct | 3FG Pct | FT Pct | Rebounds/game | Assists/game | Turnovers/game | Assist/Turnover ratio | Steals/game | Blocks/game |
|--------------|--------------|-------------|--------|---------|--------|---------------|--------------|----------------|-----------------------|-------------|-------------|
| 2 | 12.1 | 5.5 | 33.3 | 20.0 | 75.0 | 2.0 | 1.0 | 3.0 | 0.3 | 0.5 | 0.0 |



NEREA HERMOSA

#20

Sophomore • 6'5" • Center • Vitoria, Spain • IES Joaquim Blume

THE HERMOSA FILE

Contributed six points and five rebounds in Tech's season-opening win against Georgia State (11/25)...Pitched in 10 points, shooting 5-of-9 from the floor, and pulled down five rebounds against Georgia (11/29).

KEY SEASON AVERAGES

| | | |
|------------|------------|------------|
| Points | Rebounds | Assists |
| 5.5 | 3.5 | 0.5 |

CAREER & SEASON HIGHS

Points

Season: 10 vs. Georgia (11/29/20)
 Career: 16 at Pitt (2/6/20)

Field Goals

Season: 5 vs. Georgia (11/29/20)
 Career: 8 at Pitt (2/6/20)

Field Goals Attempted

Season: 9 vs. Georgia (11/29/20)
 Career: 10, 3x, last vs. Pitt (3/5/20)

3- Point Field Goals

Season:
 Career:

3- Point Field Goals Attempted

Season:
 Career:

Free Throws

Season: 2 vs. Boston College (12/9/20)
 Career: 5 vs. Grambling State (11/10/19)

Free Throws Attempted

Season: 2, 2x, last vs. Boston College (12/9/20)
 Career: 6, 3x, last vs. Pitt (3/5/20)

Rebounds

Season: 5, 2x, last vs. Georgia (11/29/20)
 Career: 9 vs. Georgia State (11/20/19)

Assists

Season: 2 vs. Georgia State (11/25/20)
 Career: 4 vs. Georgia State (11/20/19)

Steals

Season: 1 vs. Georgia (11/29/20)
 Career: 3 vs. Grambling State (11/10/19)

Blocks

Season: 1, 2x, last vs. Tulane (12/3/20)
 Career: 4 vs. North Carolina (1/23/20)

Turnovers

Season: 2 vs. Georgia State (11/25/20)
 Career: 4, 2x, last vs. Rutgers (11/30/19)

Minutes

Season: 24 vs. Georgia (11/29/20)
 Career: 40 vs. Rutgers (11/30/19)

Miscellaneous

| | | |
|--------------------------|--------|-------|
| | Career | 20-21 |
| Double-Doubles: | - | - |
| Double Figure Points: | 9 | 1 |
| Double Figure Rebounds: | - | - |
| Led Team In Points/Rebs: | 3/0 | - |
| 20+ Points: | - | - |

2020-21 GAME-BY-GAME

#20 HERMOSA , Nerea

| Opponent | Date | GS | MIN | Total | | 3-Pointers | | Free throws | | Rebounds | | | | PF | A | T/O | BLK | STL | PTS | AVG |
|----------------|------------|----|--------------|--------------|-------------|------------|-------------|-------------|-------------|----------|----------|-----------|------------|----------|----------|----------|----------|----------|-----------|------------|
| | | | | FG-FGA | PCT | 3FG-3FGA | PCT | FT-FTA | PCT | OFF | DEF | TOT | AVG | | | | | | | |
| Georgia St. | 11/25/2020 | * | 23:29 | 3-8 | .375 | 0-0 | .000 | 0-2 | .000 | 1 | 4 | 5 | 5.0 | 4 | 2 | 2 | 1 | 0 | 6 | 6.0 |
| Georgia | 11/29/2020 | * | 24:10 | 5-9 | .556 | 0-0 | .000 | 0-0 | .000 | 3 | 2 | 5 | 5.0 | 2 | 0 | 0 | 0 | 1 | 10 | 8.0 |
| Tulane | 12/03/2020 | * | 16:24 | 2-7 | .286 | 0-0 | .000 | 0-0 | .000 | 2 | 1 | 3 | 4.3 | 1 | 0 | 1 | 1 | 0 | 4 | 6.7 |
| Boston College | 12/09/2020 | | 08:17 | 0-2 | .000 | 0-0 | .000 | 2-2 | 1.000 | 1 | 0 | 1 | 3.5 | 1 | 0 | 1 | 0 | 2 | 5.5 | |
| Totals | | | 72:20 | 10-26 | .385 | 0-0 | .000 | 2-4 | .500 | 7 | 7 | 14 | 3.5 | 8 | 2 | 4 | 2 | 1 | 22 | 5.5 |

Player Averages

| Games Played | Minutes/game | Points/game | FG Pct | 3FG Pct | FT Pct | Rebounds/game | Assists/game | Turnovers/game | Assist/Turnover ratio | Steals/game | Blocks/game |
|--------------|--------------|-------------|--------|---------|--------|---------------|--------------|----------------|-----------------------|-------------|-------------|
| 4 | 18.1 | 5.5 | 38.5 | 0.0 | 50.0 | 3.5 | 0.5 | 1.0 | 0.5 | 0.3 | 0.5 |



RONNI NWORA

#21

Redshirt-Freshman • 6'2" • Forward/Center • Buffalo, N.Y. • The Park School of Buffalo

THE NWORA FILE

KEY SEASON AVERAGES

| Points | Rebounds | Assists |
|------------|------------|------------|
| 0.0 | 0.0 | 0.0 |

2020-21 GAME-BY-GAME

CAREER & SEASON HIGHS

| | | |
|---------------------------------------|--------|-------|
| Points | | |
| Season: | | |
| Field Goals | | |
| Season: | | |
| Field Goals Attempted | | |
| Season: | | |
| 3- Point Field Goals | | |
| Season: | | |
| 3- Point Field Goals Attempted | | |
| Season: | | |
| Free Throws | | |
| Season: | | |
| Free Throws Attempted | | |
| Season: | | |
| Rebounds | | |
| Season: | | |
| Assists | | |
| Season: | | |
| Steals | | |
| Season: | | |
| Blocks | | |
| Season: | | |
| Turnovers | | |
| Season: | | |
| Minutes | | |
| Season: | | |
| Miscellaneous | | |
| | Career | 19-20 |
| Double-Doubles: | - | - |
| Double Figure Points: | - | - |
| Double Figure Rebounds: | - | - |
| Led Team In Points/Rebs: | - | - |
| 20+ Points: | - | - |



EYLIA LOVE

#24

Freshman • 6'1" • Guard/Forward • Kansas City, Kansas • Olathe North

THE LOVE FILE

Pulled down eight rebounds, while finishing with four points and a block in first collegiate game against Georgia State (11/25)...Contributed seven points and four rebounds against Georgia (11/29)...Posted first double-figure scoring performance against Tulane (12/3) with 10 points, going 2-for-2 from three-point range for her first treys of the season...Added 10 points in win over Boston College (12/9), going a perfect 3-for-3 from the field and finishing 4-of-6 at the charity stripe.

KEY SEASON AVERAGES

| | | |
|------------|------------|------------|
| Points | Rebounds | Steals |
| 7.8 | 5.3 | 0.5 |

CAREER & SEASON HIGHS

Points

Career: 10 , 2x, last vs. Boston College (12/9/20)

Field Goals

Career: 3, 2x, last vs. Boston College (12/9/20)

Field Goals Attempted

Career: 5, 2x, last vs. Tulane (12/3/20)

3- Point Field Goals

Career: 2 vs. Tulane (12/3/20)

3- Point Field Goals Attempted

Career: 2 vs. Tulane (12/3/20)

Free Throws

Career: 4 vs. Boston College (12/9/20)

Free Throws Attempted

Career: 6 vs. Boston College (12/9/20)

Rebounds

Career: 8 vs. Georgia State (11/25/20)

Assists

Career:

Steals

Career: 1, 2x, last vs. Tulane (12/3/20)

Blocks

Career: 1 vs. Georgia State (11/25/20)

Turnovers

Career: 3 vs. Georgia State (11/25/20)

Minutes

Career: 29 vs. Georgia (11/29/20)

Miscellaneous

| | | |
|--------------------------|--------|-------|
| | Career | 20-21 |
| Double-Doubles: | - | - |
| Double Figure Points: | 2 | 2 |
| Double Figure Rebounds: | - | - |
| Led Team In Points/Rebs: | - | - |
| 20+ Points: | - | - |

2020-21 GAME-BY-GAME

#24 LOVE, Eylia

| Opponent | Date | GS | MIN | Total | | 3-Pointers | | Free throws | | Rebounds | | | | PF | A | T/O | BLK | STL | PTS | AVG |
|----------------|------------|----------|--------------|-------------|-------------|------------|--------------|--------------|-------------|----------|-----------|-----------|------------|-----------|----------|----------|----------|----------|-----------|------------|
| | | | | FG-FGA | PCT | 3FG-3FGA | PCT | FT-FTA | PCT | OFF | DEF | TOT | AVG | | | | | | | |
| Georgia St. | 11/25/2020 | | 20:26 | 1-5 | .200 | 0-0 | .000 | 2-4 | .500 | 3 | 5 | 8 | 8.0 | 1 | 0 | 3 | 1 | 0 | 4 | 4.0 |
| Georgia | 11/29/2020 | | 29:09 | 2-4 | .500 | 0-0 | .000 | 3-4 | .750 | 2 | 2 | 4 | 6.0 | 3 | 0 | 2 | 0 | 1 | 7 | 5.5 |
| Tulane | 12/03/2020 | | 20:54 | 3-5 | .600 | 2-2 | 1.000 | 2-2 | 1.000 | 1 | 3 | 4 | 5.3 | 4 | 0 | 2 | 0 | 1 | 10 | 7.0 |
| Boston College | 12/09/2020 | | 23:16 | 3-3 | 1.000 | 0-0 | .000 | 4-6 | .667 | 2 | 3 | 5 | 5.3 | 4 | 0 | 0 | 0 | 0 | 10 | 7.8 |
| Totals | | 0 | 93:45 | 9-17 | .529 | 2-2 | 1.000 | 11-16 | .688 | 8 | 13 | 21 | 5.3 | 12 | 0 | 7 | 1 | 2 | 31 | 7.8 |

Player Averages

| Games Played | Minutes/game | Points/game | FG Pct | 3FG Pct | FT Pct | Rebounds/game | Assists/game | Turnovers/game | Assist/Turnover ratio | Steals/game | Blocks/game |
|--------------|--------------|-------------|--------|---------|--------|---------------|--------------|----------------|-----------------------|-------------|-------------|
| 4 | 23.4 | 7.8 | 52.9 | 100.0 | 68.8 | 5.3 | 0.0 | 1.8 | 0.0 | 0.5 | 0.3 |

**LOTTA-MAJ LAHTINEN****#31**

Junior • 5'7" • Guard • Helsinki, Finland • Makelanrinne Sports

THE LAHTINEN FILE

Recorded second career double-double in season-opening game against Georgia State (11/25) with a team-best 14 points and 10 rebounds...Recorded a career night against Boston College (12/9), scoring a career-high 27 points on personal-best 11-of-16 field goals...Hit career-high five three-pointers and swiped personal-best eight steals...Her 27 point outing marked the first 20-plus point game in her collegiate career.

KEY SEASON AVERAGES

Points Rebounds Assists
13.5 **6.8** **3.8**

CAREER & SEASON HIGHS**Points**

Season: 27 vs. Boston College (12/9/20)

Career: 27 vs. Boston College (12/9/20)

Field Goals

Season: 11 vs. Boston College (12/9/20)

Career: 11 vs. Boston College (12/9/20)

Field Goals Attempted

Season: 16 vs. Boston College (12/9/20)

Career: 16, 2x, last vs. Boston College (12/9/20)

3- Point Field Goals

Season: 5 vs. Boston College (12/9/20)

Career: 5 vs. Boston College (12/9/20)

3- Point Field Goals Attempted

Season: 8 vs. Boston College (12/9/20)

Career: 8, 2x, last vs. Boston College (12/9/20)

Free Throws

Season: 2, 2x, last vs. Georgia (11/29/20)

Career: 6 at UNC (1/31/19)

Free Throws Attempted

Season: 3 vs. Georgia State (11/25/20)

Career: 7 vs. Boston College (1/19/20)

Rebounds

Season: 10 vs. Georgia State (11/25/20)

Career: 12 at Clemson (3/1/20)

Assists

Season: 5 vs. Boston College (12/9/20)

Career: 7 vs. Florida State (3/3/19)

Steals

Season: 8 vs. Boston College (12/9/20)

Career: 8 vs. Boston College (12/9/20)

Blocks

Season:

Career: 2 vs. Virginia (12/29/19)

Turnovers

Season: 6 vs. Tulane (12/3/20)

Career: 8 at Houston (11/9/18)

Minutes

Season: 37 vs. Boston College (12/9/20)

Career: 45 at Virginia Tech (2/13/20)

Miscellaneous

| | | |
|--------------------------|--------|-------|
| | Career | 20-21 |
| Double-Doubles: | 2 | 1 |
| Double Figure Points: | 19 | 2 |
| Double Figure Rebounds: | 2 | 1 |
| Led Team In Points/Rebs: | 9/4 | 2/1 |
| 20+ Points: | 1 | 1 |

2020-21 GAME-BY-GAME**#31 LAHTINEN, Lotta-Maj**

| Opponent | Date | GS | MIN | Total | | 3-Pointers | | Free throws | | Rebounds | | | | PF | A | T/O | BLK | STL | PTS | AVG | |
|----------------|------------|----|----------|---------------|--------------|-------------|-------------|-------------|------------|-------------|----------|-----------|-----------|------------|----------|-----------|-----------|----------|-----------|-----------|-------------|
| | | | | FG-FGA | PCT | 3FG-3FGA | PCT | FT-FTA | PCT | OFF | DEF | TOT | AVG | | | | | | | | |
| Georgia St. | 11/25/2020 | * | 35:11 | 6-11 | .545 | 0-3 | .000 | 2-3 | .667 | 3 | 7 | 10 | 10.0 | 1 | 3 | 2 | 0 | 4 | 14 | 14.0 | |
| Georgia | 11/29/2020 | * | 35:49 | 2-12 | .167 | 0-4 | .000 | 2-2 | 1.000 | 1 | 4 | 5 | 7.5 | 4 | 4 | 5 | 0 | 0 | 6 | 10.0 | |
| Tulane | 12/03/2020 | * | 31:36 | 3-11 | .273 | 0-2 | .000 | 1-1 | 1.000 | 3 | 2 | 5 | 6.7 | 3 | 3 | 6 | 0 | 3 | 7 | 9.0 | |
| Boston College | 12/09/2020 | * | 37:08 | 11-16 | .688 | 5-8 | .625 | 0-0 | .000 | 1 | 6 | 7 | 6.8 | 1 | 5 | 4 | 0 | 8 | 27 | 13.5 | |
| Totals | | | 4 | 139:43 | 22-50 | .440 | 5-17 | .294 | 5-6 | .833 | 8 | 19 | 27 | 6.8 | 9 | 15 | 17 | 0 | 15 | 54 | 13.5 |

Player Averages

| Games Played | Minutes/ game | Points/ game | FG Pct | 3FG Pct | FT Pct | Rebounds/ game | Assists/ game | Turnovers/ game | Assist/Turnover ratio | Steals/ game | Blocks/ game |
|--------------|---------------|--------------|--------|---------|--------|----------------|---------------|-----------------|-----------------------|--------------|--------------|
| 4 | 34.9 | 13.5 | 44.0 | 29.4 | 83.3 | 6.8 | 3.8 | 4.3 | 0.9 | 3.8 | 0.0 |



KIERRA FLETCHER

#41

Senior • 5'9" • Guard • Warren, Mich. • Warren Cousino High School

THE FLETCHER FILE

KEY SEASON AVERAGES (2019-20)

| | | |
|-------------|------------|------------|
| Points | Rebounds | Assists |
| 10.2 | 6.2 | 3.1 |

CAREER & SEASON HIGHS

Points

 Season: 19 vs. North Carolina (1/23/20)
 Career: 25 at Houston (11/9/18)

Field Goals

 Season: 8, 2x, last at Virginia Tech (2/13/20)
 Career: 10 at Houston (11/9/18)

Field Goals Attempted

 Season: 16, 2x, last at Virginia Tech (2/13/20)
 Career: 16, 2x, last at Virginia Tech (2/13/20)

3- Point Field Goals

 Season: 1, 2x, last vs. North Carolina (1/23/20)
 Career: 1, 2x, last vs. North Carolina (1/23/20)

3- Point Field Goals Attempted

 Season: 2, 2x, last vs. Virginia (12/29/19)
 Career: 2, 3x, last vs. Virginia (12/29/19)

Free Throws

 Season: 8 at Wake Forest (1/5/20)
 Career: 10 vs. Syracuse (1/20/19)

Free Throws Attempted

 Season: 8 at Wake Forest (1/5/20)
 Career: 11, 2x, last vs. Syracuse (1/20/19)

Rebounds

 Season: 13, 2x, last at Virginia Tech (2/13/20)
 Career: 14 vs. Seton Hall (12/20/18)

Assists

 Season: 7, 2x, last at Georgia (11/17/19)
 Career: 7, 4x, last at Georgia (11/17/19)

Steals

 Season: 6 vs. Grambling State (11/10/19)
 Career: 7 vs. Miami (2/22/18)

Blocks

 Season: 2, 2x, last vs. Pitt (3/5/20)
 Career: 3 at Notre Dame (2/3/19)

Turnovers

 Season: 6 at Duke (1/26/20)
 Career: 7, 2x, last at Houston (11/9/18)

Minutes

 Season: 44 at Miami (1/30/20)
 Career: 48 at Houston (11/9/18)

Miscellaneous

| | | |
|--------------------------|--------|-------|
| | Career | 19-20 |
| Double-Doubles: | 4 | 2 |
| Double Figure Points: | 35 | 14 |
| Double Figure Rebounds: | 6 | 3 |
| Led Team In Points/Rebs: | 6/13 | 1/7 |
| 20+ Points: | 2 | - |

2019-20 GAME-BY-GAME

#41 FLETCHER, Kierra

| Opponent | Date | GS | MIN | Total | | 3-Pointers | | Free throws | | Rebounds | | | | PF | A | T/O | BLK | STL | PTS | AVG | |
|------------------|------------|----|-----------|----------------|----------------|-------------|-------------|-------------|---------------|-------------|-----------|------------|------------|------------|-----------|-----------|-----------|----------|-----------|------------|-------------|
| | | | | FG-FGA | PCT | 3FG-3FGA | PCT | FT-FTA | PCT | OFF | DEF | TOT | AVG | | | | | | | | |
| Houston | 11/05/2019 | * | 28:30 | 3-8 | .375 | 0-0 | .000 | 3-4 | .750 | 3 | 4 | 7 | 7.0 | 3 | 3 | 4 | 0 | 0 | 9 | 9.0 | |
| Grambling | 11/10/2019 | * | 31:01 | 5-6 | .833 | 0-0 | .000 | 3-4 | .750 | 5 | 3 | 8 | 7.5 | 0 | 7 | 1 | 0 | 6 | 13 | 11.0 | |
| at Georgia | 11/17/2019 | * | 37:54 | 7-16 | .438 | 1-2 | .500 | 1-1 | 1.000 | 3 | 4 | 7 | 7.3 | 1 | 7 | 3 | 1 | 2 | 16 | 12.7 | |
| Georgia St. | 11/20/2019 | * | 26:52 | 3-4 | .750 | 0-0 | .000 | 1-2 | .500 | 0 | 2 | 2 | 6.0 | 2 | 4 | 2 | 0 | 0 | 7 | 11.3 | |
| vs Seton Hall | 11/28/2019 | * | 32:03 | 3-4 | .750 | 0-0 | .000 | 2-4 | .500 | 1 | 5 | 6 | 6.0 | 1 | 4 | 3 | 0 | 0 | 8 | 10.6 | |
| vs Rutgers | 11/30/2019 | * | 34:24 | 2-6 | .333 | 0-0 | .000 | 3-6 | .500 | 4 | 3 | 7 | 6.2 | 3 | 3 | 4 | 0 | 0 | 7 | 10.0 | |
| Wisconsin | 12/05/2019 | * | 32:43 | 3-6 | .500 | 0-0 | .000 | 2-2 | 1.000 | 1 | 4 | 5 | 6.0 | 2 | 5 | 1 | 1 | 1 | 8 | 9.7 | |
| at Kennesaw St. | 12/08/2019 | * | 40:00 | 2-5 | .400 | 0-0 | .000 | 3-4 | .750 | 3 | 6 | 9 | 6.4 | 2 | 2 | 2 | 0 | 1 | 7 | 9.4 | |
| ETSU | 12/15/2019 | * | 22:21 | 2-3 | .667 | 0-0 | .000 | 0-0 | .000 | 2 | 3 | 5 | 6.2 | 4 | 4 | 2 | 0 | 0 | 4 | 8.8 | |
| vs Texas A&M | 12/20/2019 | * | 37:40 | 5-8 | .625 | 0-1 | .000 | 1-1 | 1.000 | 1 | 5 | 6 | 6.2 | 2 | 2 | 0 | 0 | 0 | 11 | 9.0 | |
| vs Rice | 12/21/2019 | * | 39:22 | 6-13 | .462 | 0-1 | .000 | 3-4 | .750 | 6 | 7 | 13 | 6.8 | 0 | 3 | 1 | 0 | 0 | 15 | 9.5 | |
| Virginia | 12/29/2019 | * | 34:08 | 4-10 | .400 | 0-2 | .000 | 3-4 | .750 | 3 | 5 | 8 | 6.9 | 2 | 1 | 1 | 0 | 1 | 11 | 9.7 | |
| Miami (FL) | 01/02/2020 | * | 39:04 | 3-7 | .429 | 0-1 | .000 | 2-4 | .500 | 3 | 7 | 10 | 7.2 | 3 | 2 | 3 | 0 | 1 | 8 | 9.5 | |
| at Wake Forest | 01/05/2020 | * | 35:46 | 2-9 | .222 | 0-0 | .000 | 8-8 | 1.000 | 3 | 0 | 3 | 6.9 | 5 | 4 | 2 | 0 | 2 | 12 | 9.7 | |
| at Florida St. | 01/09/2020 | * | 40:00 | 5-9 | .556 | 0-0 | .000 | 2-4 | .500 | 4 | 2 | 6 | 6.8 | 2 | 2 | 0 | 0 | 4 | 12 | 9.9 | |
| Clemson | 01/12/2020 | * | 40:00 | 1-6 | .167 | 0-1 | .000 | 3-3 | 1.000 | 2 | 3 | 5 | 6.7 | 1 | 3 | 3 | 0 | 1 | 5 | 9.6 | |
| at Syracuse | 01/16/2020 | * | 39:31 | 4-8 | .500 | 0-0 | .000 | 5-5 | 1.000 | 3 | 4 | 7 | 6.7 | 2 | 1 | 3 | 0 | 3 | 13 | 9.8 | |
| Boston College | 01/19/2020 | * | 33:03 | 2-11 | .182 | 0-1 | .000 | 2-4 | .500 | 0 | 3 | 3 | 6.5 | 2 | 0 | 3 | 2 | 2 | 6 | 9.6 | |
| North Carolina | 01/23/2020 | * | 38:53 | 8-15 | .533 | 1-1 | 1.000 | 2-2 | 1.000 | 2 | 5 | 7 | 6.5 | 4 | 1 | 2 | 0 | 2 | 19 | 10.1 | |
| at Duke | 01/26/2020 | * | 40:00 | 5-11 | .455 | 0-1 | .000 | 0-0 | .000 | 2 | 3 | 5 | 6.5 | 1 | 1 | 6 | 0 | 2 | 10 | 10.1 | |
| at Miami (FL) | 01/30/2020 | * | 43:39 | 4-13 | .308 | 0-1 | .000 | 2-3 | .667 | 4 | 4 | 8 | 6.5 | 1 | 3 | 2 | 0 | 2 | 10 | 10.0 | |
| Notre Dame | 02/02/2020 | * | 36:38 | 2-11 | .182 | 0-1 | .000 | 4-6 | .667 | 4 | 3 | 7 | 6.5 | 4 | 5 | 3 | 1 | 3 | 8 | 10.0 | |
| at Pittsburgh | 02/06/2020 | * | 31:49 | 4-7 | .571 | 0-0 | .000 | 2-2 | 1.000 | 3 | 2 | 5 | 6.5 | 3 | 4 | 0 | 0 | 2 | 10 | 10.0 | |
| Wake Forest | 02/09/2020 | * | 38:00 | 2-7 | .286 | 0-0 | .000 | 5-6 | .833 | 3 | 1 | 4 | 6.4 | 1 | 3 | 1 | 0 | 0 | 9 | 9.9 | |
| at Virginia Tech | 02/13/2020 | * | 43:23 | 8-16 | .500 | 0-0 | .000 | 1-3 | .333 | 5 | 8 | 13 | 6.6 | 1 | 3 | 3 | 1 | 0 | 17 | 10.2 | |
| at NC State | 02/16/2020 | * | 22:14 | 4-6 | .667 | 0-0 | .000 | 0-0 | .000 | 0 | 0 | 0 | 6.4 | 2 | 3 | 0 | 0 | 0 | 8 | 10.1 | |
| Louisville | 02/20/2020 | * | 18:08 | 2-8 | .250 | 0-0 | .000 | 3-5 | .600 | 4 | 2 | 6 | 6.4 | 4 | 0 | 1 | 0 | 0 | 7 | 10.0 | |
| Florida St. | 02/23/2020 | * | 36:50 | 5-9 | .556 | 0-0 | .000 | 4-5 | .800 | 1 | 4 | 5 | 6.3 | 3 | 3 | 3 | 0 | 0 | 14 | 10.1 | |
| at Clemson | 03/01/2020 | * | 38:06 | 4-7 | .571 | 0-0 | .000 | 3-3 | 1.000 | 3 | 1 | 4 | 6.2 | 1 | 4 | 3 | 0 | 1 | 11 | 10.2 | |
| vs Pittsburgh | 03/05/2020 | * | 40:00 | 2-8 | .250 | 0-1 | .000 | 2-4 | .500 | 1 | 2 | 3 | 6.1 | 2 | 5 | 0 | 2 | 2 | 6 | 10.0 | |
| vs NC State | 03/06/2020 | * | 39:23 | 7-11 | .636 | 0-1 | .000 | 1-3 | .333 | 2 | 7 | 9 | 6.2 | 1 | 3 | 1 | 1 | 2 | 15 | 10.2 | |
| Totals | | | 31 | 1091:26 | 119-268 | .444 | 2-15 | .133 | 76-106 | .717 | 81 | 112 | 193 | 6.2 | 65 | 95 | 63 | 9 | 40 | 316 | 10.2 |

Player Averages

| Games Played | Minutes/ game | Points/ game | FG Pct | 3FG Pct | FT Pct | Rebounds/ game | Assists/ game | Turnovers/ game | Assist/Turnover ratio | Steals/ game | Blocks/ game |
|--------------|---------------|--------------|--------|---------|--------|----------------|---------------|-----------------|-----------------------|--------------|--------------|
| 31 | 35.2 | 10.2 | 44.4 | 13.3 | 71.7 | 6.2 | 3.1 | 2.0 | 1.5 | 1.3 | 0.3 |



TV/RADIO ROSTER



Loyal McQueen 00
G • 5-8 • Fr.



Sarah Bates 3
G • 5-9 • r-Jr.



Anaya Boyd 4
G • 5-10 • Fr.



Aixa Wone Aranz 11
F • 6-3 • So.



Kondalia Montgomery 12
G • 5-7 • Jr.



Lorela Cubaj 13
F • 6-4 • Sr.



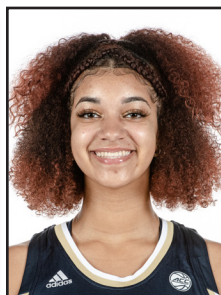
Anisa Clark 14
G • 5-7 • Fr.



Avyonce Carter 15
G • 5-10 • Fr.



Nerea Hermosa 20
C • 6-5 • So.



Ronni Nwora 21
F/C • 6-2 • r-Fr.



Eylia Love 24
G/F • 6-1 • Fr.



Lotta-Maj Lahtinen 31
G • 5-7 • Jr.



Kierra Fletcher 41
G • 5-9 • Sr.



Nell Fortner
Head Coach



Tasha Butts
Assistant Coach



Blanche Alverson
Assistant Coach



Murriel Page
Assistant Coach



Mickie DeMoss
Chief of Staff



Ashlee Villarreal
Director of Operations



Sydney Durrah
Director of Video



Cortnee Walton
Recruiting Operations



Katie Wilkins
Graduate Manager



Yolanda Berryhill
Player Development Coach



Rachel Matthews
Athletic Trainer