



Officials: Carla Fountain, Rod Creech, Brandon Enterline

Boston College - 48

Record: 11-5 (1-2)

NO.	Name	C/G	Min	FG			3P			FT			Rebounds			Fouls		TP	AS	TO	ST	Blocks		+/-
				M-A	M-A	M-A	OR	DR	TOT	PF	FD	OR	DR	TOT	BS	BA								
5	Maria Gakdeng	C	31:07	1-6	0-0	0-0	2	3	5	2	0	2	2	1	2	3	6	0	-32					
4	JoJo Lacey	G	26:20	1-6	0-2	1-2	1	3	4	4	1	3	2	6	0	0	1	-33						
20	Taina Mair	G	31:49	4-18	0-2	2-2	0	2	2	3	1	10	0	2	1	0	0	-32						
21	Andrea Daley	G	28:54	8-14	0-2	1-4	2	0	2	3	3	17	0	3	0	1	0	-23						
24	Dontavia Waggoner	G	33:32	3-11	0-0	1-2	0	4	4	2	3	7	3	3	3	2	3	-42						
12	Ally VanTimmeren		25:37	1-5	0-2	1-2	2	0	2	2	4	3	0	0	1	0	2	-12						
14	Kayla Lezama		10:35	0-2	0-1	0-0	0	0	0	4	0	0	0	1	0	0	0	-13						
3	Ava McGee		11:13	2-2	0-0	2-2	2	1	3	0	1	6	0	1	0	1	0	2						
43	Ally Carman		00:53	0-0	0-0	0-0	0	0	0	0	0	0	0	0	0	0	0	0						
Team							3	3	6			0		0										
Totals				20-64	0-9	8-14	12	16	28	20	13	48	6	18	8	10	6	-37						

Technical Fouls::NONE

Shooting By Period		
1 st FG%	4-19	21.1%
3PT%	0-3	0.0%
FT%	0-0	0%
2 nd FG%	3-13	23.1%
3PT%	0-2	0.0%
FT%	2-4	50%
3 rd FG%	7-13	53.8%
3PT%	0-3	0.0%
FT%	5-6	83.3%
4 th FG%	6-19	31.6%
3PT%	0-1	0.0%
FT%	1-4	25%
GM FG%	20-64	31.3%
3PT%	0-9	0.0%
FT%	8-14	57.1%

Dead Ball Rebounds: 5, 0

Notre Dame - 85

Record: 12-1 (3-0)

NO.	Name	C/G	Min	FG			3P			FT			Rebounds			Fouls		TP	AS	TO	ST	Blocks		+/-
				M-A	M-A	M-A	OR	DR	TOT	PF	FD	OR	DR	TOT	BS	BA								
21	Maddy Westbeld	F	22:35	3-8	0-1	0-0	1	1	2	3	0	6	3	2	1	0	2	29						
22	Kylee Watson	F	17:51	2-6	0-0	2-2	0	4	4	0	3	6	1	2	2	3	3	17						
1	Dara Mabrey	G	22:24	1-6	0-2	3-3	0	3	3	1	1	5	2	3	2	0	1	18						
5	Olivia Miles	G	27:31	7-10	0-2	3-5	0	6	6	1	4	17	5	5	3	0	0	35						
11	Sonia Citron	G	27:42	7-9	1-1	0-0	1	5	6	1	1	15	4	1	3	2	0	34						
33	Lauren Ebo		21:46	2-4	0-0	1-2	2	4	6	3	1	5	2	1	1	0	1	12						
14	KK Bransford		22:32	5-5	0-0	7-9	0	0	0	1	5	17	1	1	0	0	0	11						
4	Cassandre Prosper		16:35	3-7	1-1	0-0	4	5	9	1	2	7	1	2	2	0	2	23						
15	Natalija Marshall		09:30	1-1	0-0	0-0	0	0	0	2	0	2	1	2	0	1	0	8						
0	Jenna Brown		08:12	1-2	0-0	3-4	3	0	3	0	3	5	0	0	1	0	0	-1						
25	Sarah Cernugel		03:22	0-2	0-0	0-0	0	0	0	0	0	0	0	0	0	0	1	-1						
Team							2	5	7			0		0										
Totals				32-60	2-7	19-25	13	33	46	13	20	85	20	19	15	6	10	37						

Technical Fouls::NONE

Shooting By Period		
1 st FG%	9-16	56.3%
3PT%	0-2	0.0%
FT%	7-8	87.5%
2 nd FG%	8-17	47.1%
3PT%	1-3	33.3%
FT%	7-9	77.8%
3 rd FG%	5-9	55.6%
3PT%	0-1	0.0%
FT%	2-4	50%
4 th FG%	10-18	55.6%
3PT%	1-1	100.0%
FT%	3-4	75%
GM FG%	32-60	53.3%
3PT%	2-7	28.6%
FT%	19-25	76.0%

Dead Ball Rebounds: 5, 0

	BOS	UND
Biggest lead	0 (1 st 10:00)	39 (4 th 3:22)
Best Scoring Run	8(3 rd 0:17)	13(2 nd 5:05)
Lead Changes	0	
Times Tied	0	
Time with Lead	00:00	39:55

Points from	BOS	UND
Turnovers	14	19
Paint	36	56
Second Chance	10	16
Fast Breaks	9	19
Bench	9	36

	Period by Period Scoring				
	1st	2nd	3rd	4th	TOT
BOS	8	8	19	13	48
UND	25	24	12	24	85



Period 1

Quarter Starters:

UND	1 Mabrey D	5 Miles O	11 Citron S	21 Westbeld M	22 Watson K
BOS	4 Lacey J	5 Gakdeng M	20 Mair T	21 Daley A	24 Waggoner D

Game Time	UND	Score	Diff	BOS
10:00	22 WATSON K jumpball won			5 GAKDENG M jumpball lost
09:55	21 WESTBELD M 2pt FG in the paint, layup made (2)	2-0	2	
09:55	11 CITRON S assist (1)			
09:37				21 DALEY A 2pt FG in the paint, layup missed
09:34	22 WATSON K defensive rebound (1)			
09:13	21 WESTBELD M turnover lost ball (1)			
09:00				20 MAIR T 2pt FG from turnover outside the paint, pull up jump shot missed
08:57	21 WESTBELD M defensive rebound (1)			
08:49	22 WATSON K 2pt FG in the paint, layup blocked			
08:49				5 GAKDENG M block (1)
08:45				20 MAIR T defensive rebound (1)
08:29	5 MILES O steal (1)			24 WAGGONER D turnover bad pass (1)
08:26	5 MILES O foul drawn (1)			24 WAGGONER D foul shooting (1 - 1)
08:26	5 MILES O free throw fast break 1 - 2 missed			
08:26	offensive dead ball rebound (1)			
08:26	5 MILES O free throw fast break 2 - 2 made (1)	3-0	3	
08:07	5 MILES O steal (2)			21 DALEY A turnover lost ball (1)
08:00	11 CITRON S 2pt FG fast break from turnover in the paint, driving layup made (2)	5-0	5	
08:00	5 MILES O assist (1)			
07:51				20 MAIR T 2pt FG in the paint, driving layup missed
07:51	22 WATSON K defensive rebound (2)			
07:51	22 WATSON K foul drawn (1)			5 GAKDENG M foul personal (1 - 2)
07:36	11 CITRON S 2pt FG in the paint, driving layup made (4)	7-0	7	
07:36	22 WATSON K assist (1)			
07:24		7-2	5	24 WAGGONER D 2pt FG in the paint, driving layup made (2)
07:14	5 MILES O 3pt FG , jump shot missed			
07:12				defensive rebound (2)
07:13	22 WATSON K substitution out			
07:13	33 EBO L substitution in			
07:02				24 WAGGONER D 2pt FG in the paint, jump shot missed
07:00				offensive rebound (3)
06:53	5 MILES O steal (3)			5 GAKDENG M turnover lost ball (1)
06:47	21 WESTBELD M 2pt FG from turnover in the paint, layup blocked			
06:47				24 WAGGONER D block (1)
06:46				defensive rebound (4)
06:33		7-4	3	5 GAKDENG M 2pt FG outside the paint, jump shot made (2)
06:33				24 WAGGONER D assist (1)
06:19	1 MABREY D 2pt FG in the paint, driving layup made (2)	9-4	5	
06:01				24 WAGGONER D 2pt FG in the paint, driving layup missed
05:57	11 CITRON S defensive rebound (1)			
05:53	5 MILES O 2pt FG fast break in the paint, layup made (3)	11-4	7	



Official Basketball Play by Play - 1st Period
Boston College at Notre Dame
 01/01/23 Purcell Pavilion at the Joyce Center, Notre Dame, Ind.
 2022-23 Women's Basketball

Game Time: 12:00 PM
Game Duration: 1:44
Attendance: 5,532

Officials: Carla Fountain, Rod Creech, Brandon Enterline

Game Time	UND	Score	Diff	BOS
05:53	11 CITRON S assist (2)			
05:53	5 MILES O foul drawn (2)			21 DALEY A foul shooting (1 - 3)
05:53	1 MABREY D substitution out			
05:53	14 BRANSFORD K substitution in			
05:53				5 GAKDENG M substitution out
05:53				12 VANTIMMEREN A substitution in
05:53	5 MILES O free throw fast break 1 - 1 made (4)	12-4	8	
05:40	11 CITRON S steal (1)			21 DALEY A turnover bad pass (2)
05:18	5 MILES O 2pt FG from turnover in the paint, driving layup made (6)	14-4	10	
05:12				21 DALEY A 2pt FG in the paint, layup missed
05:06	11 CITRON S defensive rebound (2)			
05:05	21 WESTBELD M 2pt FG in the paint, layup missed			
05:02				24 WAGGONER D defensive rebound (1)
05:00	21 WESTBELD M steal (1)			21 DALEY A turnover lost ball (3)
05:00	14 BRANSFORD K 2pt FG fast break from turnover in the paint, layup made (2)	16-4	12	
05:00	21 WESTBELD M assist (1)			
04:40				Timeout 30 Sec
04:40	5 MILES O substitution out			
04:40	21 WESTBELD M substitution out			
04:40	1 MABREY D substitution in			
04:40	22 WATSON K substitution in			
04:40				21 DALEY A substitution out
04:40				14 LEZAMA K substitution in
04:21	1 MABREY D steal (1)			14 LEZAMA K turnover bad pass (1)
04:07	1 MABREY D turnover bad pass (1)			
04:07				14 LEZAMA K substitution out
04:07				5 GAKDENG M substitution in
03:51				12 VANTIMMEREN A 3pt FG from turnover, jump shot missed
03:47	1 MABREY D defensive rebound (1)			
03:41	1 MABREY D 3pt FG , jump shot missed			
03:37				4 LACEY J defensive rebound (1)
03:33				20 MAIR T 2pt FG outside the paint, pull up jump shot missed
03:29	33 EBO L defensive rebound (1)			
03:13	33 EBO L 2pt FG in the paint, jump shot blocked			
03:13				5 GAKDENG M block (2)
03:08				4 LACEY J defensive rebound (2)
03:06	11 CITRON S steal (2)			4 LACEY J turnover bad pass (1)
03:00	11 CITRON S turnover bad pass (1)			5 GAKDENG M steal (1)
02:55		16-6	10	20 MAIR T 2pt FG from turnover in the paint, floating jump shot made (2)
02:34	14 BRANSFORD K foul drawn (1)			4 LACEY J foul shooting (1 - 4)
02:34	11 CITRON S substitution out			
02:34	33 EBO L substitution out			
02:34	5 MILES O substitution in			
02:34	21 WESTBELD M substitution in			
02:34				4 LACEY J substitution out
02:34				21 DALEY A substitution in
02:34	14 BRANSFORD K free throw 1 - 2 made (3)	17-6	11	



Official Basketball Play by Play - 1st Period
Boston College at Notre Dame
 01/01/23 Purcell Pavilion at the Joyce Center, Notre Dame, Ind.
 2022-23 Women's Basketball

Game Time: 12:00 PM
Game Duration: 1:44
Attendance: 5,532

Officials: Carla Fountain, Rod Creech, Brandon Enterline

Game Time	UND	Score	Diff	BOS
02:34	14 BRANSFORD K free throw 2 - 2 made (4)	18-6	12	
02:19				20 MAIR T 2pt FG outside the paint, step back jump shot missed
02:16	1 MABREY D defensive rebound (2)			
02:06	14 BRANSFORD K 2pt FG in the paint, turnaround jump shot made (6)	20-6	14	
02:06	21 WESTBELD M assist (2)			
02:06	14 BRANSFORD K foul drawn (2)			21 DALEY A foul shooting (2 - 5)
02:06				21 DALEY A substitution out
02:06				4 LACEY J substitution in
02:06	14 BRANSFORD K free throw 1 - 1 made (7)	21-6	15	
01:44	jump ball situation			
01:35				20 MAIR T 3pt FG , jump shot missed
01:33				5 GAKDENG M offensive rebound (1)
01:30				4 LACEY J 2pt FG second chance outside the paint, jump shot missed
01:28				offensive rebound (9)
01:26				12 VANTIMMEREN A 3pt FG second chance, jump shot missed
01:23	5 MILES O defensive rebound (1)			
01:21	14 BRANSFORD K 2pt FG fast break in the paint, layup made (9)	23-6	17	
01:21	5 MILES O assist (2)			
01:04	1 MABREY D foul personal (1 - 1)			12 VANTIMMEREN A foul drawn (1)
01:04	1 MABREY D substitution out			
01:04	11 CITRON S substitution in			
00:54				24 WAGGONER D 2pt FG in the paint, driving layup blocked
00:54	22 WATSON K block (1)			
00:50	5 MILES O defensive rebound (2)			
00:48	5 MILES O 2pt FG in the paint, floating jump shot missed			
00:45				20 MAIR T defensive rebound (2)
00:40		23-8	15	24 WAGGONER D 2pt FG fast break in the paint, layup made (4)
00:40				4 LACEY J assist (1)
00:24	14 BRANSFORD K foul drawn (3)			20 MAIR T foul shooting (1 - 6)
00:24	14 BRANSFORD K free throw 1 - 2 made (10)	24-8	16	
00:24	14 BRANSFORD K free throw 2 - 2 made (11)	25-8	17	
00:15				20 MAIR T 2pt FG outside the paint, pull up jump shot missed
00:12				5 GAKDENG M offensive rebound (2)
00:02				4 LACEY J 2pt FG second chance in the paint, driving layup blocked
00:02	22 WATSON K block (2)			
00:00	22 WATSON K defensive rebound (3)			
END OF PERIOD				
UND 25-8 BOS				



Officials: Carla Fountain, Rod Creech, Brandon Enterline

Boston College - 8

NO.	Name	C	Min	FG			Rebounds			Fouls		TP	AS	TO	ST	Blocks		+/-
				M-A	M-A	M-A	OR	DR	TOT	PF	FD					BS	BA	
5	Maria Gakdeng	C	08:14	1-1	0-0	0-0	2	0	2	1	0	2	0	1	1	2	0	-12
4	JoJo Lacey	G	09:32	0-2	0-0	0-0	0	2	2	1	0	0	1	1	0	0	1	-13
20	Taina Mair	G	10:00	1-7	0-1	0-0	0	2	2	1	0	2	0	0	0	0	0	-17
21	Andrea Daley	G	05:48	0-2	0-0	0-0	0	0	0	2	0	0	0	3	0	0	0	-16
24	Dontavia Waggoner	G	10:00	2-5	0-0	0-0	0	1	1	1	0	4	1	1	0	1	1	-17
12	Ally VanTimmeren		05:53	0-2	0-2	0-0	0	0	0	0	1	0	0	0	0	0	0	-10
14	Kayla Lezama		00:33	0-0	0-0	0-0	0	0	0	0	0	0	0	1	0	0	0	0
Team							2	2	4			0		0				
Totals				4-19	0-3	0-0	4	7	11	6	1	8	2	7	1	3	2	-17

Shooting By Period		
1st FG%	4-19	21.1%
3PT%	0-3	0.0%
FT%	0-0	0%
GM FG%	4-19	21.1%
3PT%	0-3	0.0%
FT%	0-0	0.0%

Dead Ball Rebounds: 0, 0

Technical Fouls::NONE

Notre Dame - 25

NO.	Name	F	Min	FG			Rebounds			Fouls		TP	AS	TO	ST	Blocks		+/-
				M-A	M-A	M-A	OR	DR	TOT	PF	FD					BS	BA	
21	Maddy Westbeld	F	07:54	1-3	0-0	0-0	0	1	1	0	0	2	2	1	1	0	1	19
22	Kylee Watson	F	07:27	0-1	0-0	0-0	0	3	3	0	1	0	1	0	0	2	1	10
1	Dara Mabrey	G	07:43	1-2	0-1	0-0	0	2	2	1	0	2	0	1	1	0	0	12
5	Olivia Miles	G	07:54	2-4	0-1	2-3	0	2	2	0	2	6	2	0	3	0	0	19
11	Sonia Citron	G	08:30	2-2	0-0	0-0	0	2	2	0	0	4	2	1	2	0	0	10
33	Lauren Ebo		04:39	0-1	0-0	0-0	0	1	1	0	0	0	0	0	0	0	1	5
14	KK Bransford		05:53	3-3	0-0	5-5	0	0	0	0	3	11	0	0	0	0	0	10
Team							0	0	0			0		0				
Totals				9-16	0-2	7-8	0	11	11	1	6	25	7	3	7	2	3	17

Shooting By Period		
1st FG%	9-16	56.3%
3PT%	0-2	0.0%
FT%	7-8	87.5%
GM FG%	9-16	56.3%
3PT%	0-2	0.0%
FT%	7-8	87.5%

Dead Ball Rebounds: 1, 0

Technical Fouls::NONE

	BOS	UND
Biggest lead	0 (1 st 10:00)	17 (1 st 1:21)
Best Scoring Run	4(1 st 6:33)	9(1 st 5:00)
Lead Changes	0	
Times Tied	0	
Time with Lead	00:00	09:55

	BOS	UND
Points from		
Turnovers	2	7
Paint	6	18
Second Chance	0	0
Fast Breaks	2	10
Bench	0	11

	Period by Period Scoring				
	1st	2nd	3rd	4th	TOT
BOS	8	8	19	13	48
UND	25	24	12	24	85



Period 2

Quarter Starters:

UND	4 Prosper C	5 Miles O	11 Citron S	21 Westbeld M	33 Ebo L
BOS	4 Lacey J	5 Gakdeng M	12 VanTimmeren A	20 Mair T	24 Waggoner D

Game Time	UND	Score	Diff	BOS
10:00	14 BRANSFORD K substitution out			
10:00	22 WATSON K substitution out			
10:00	4 PROSPER C substitution in			
10:00	33 EBO L substitution in			
09:50	5 MILES O turnover (1)			
09:40	33 EBO L steal (1)			4 LACEY J turnover bad pass (2)
09:30	21 WESTBELD M turnover bad pass (2)			
09:17	4 PROSPER C steal (1)			24 WAGGONER D turnover lost ball (2)
09:14	4 PROSPER C 2pt FG from turnover in the paint, layup blocked			
09:14				24 WAGGONER D block (2)
09:14	offensive rebound (12)			
09:13	11 CITRON S 3pt FG from turnover second chance, jump shot made (7)	28-8	20	
09:13	5 MILES O assist (3)			
08:50				24 WAGGONER D 2pt FG in the paint, driving layup missed
08:49	defensive rebound (13)			
08:34	21 WESTBELD M 3pt FG , jump shot missed			
08:32	4 PROSPER C offensive rebound (1)			
08:29	4 PROSPER C 2pt FG second chance outside the paint, pull up jump shot missed			
08:28	21 WESTBELD M offensive rebound (2)			
08:28				4 LACEY J substitution out
08:28				21 DALEY A substitution in
08:21	11 CITRON S 2pt FG second chance in the paint, layup made (9)	30-8	22	
08:21	21 WESTBELD M assist (3)			
08:01				5 GAKDENG M 2pt FG in the paint, jump shot missed
07:58	5 MILES O defensive rebound (3)			
07:43	5 MILES O turnover bad pass (2)			5 GAKDENG M steal (2)
07:38		30-10	20	21 DALEY A 2pt FG fast break from turnover in the paint, layup made (2)
07:38				24 WAGGONER D assist (2)
07:25	5 MILES O turnover bad pass (3)			5 GAKDENG M steal (3)
07:13				20 MAIR T 2pt FG from turnover outside the paint, step back jump shot missed
07:10	5 MILES O defensive rebound (4)			
07:06	5 MILES O 2pt FG fast break in the paint, driving layup made (8)	32-10	22	
06:36				20 MAIR T 2pt FG in the paint, floating jump shot missed
06:33	33 EBO L defensive rebound (2)			
06:28	21 WESTBELD M 2pt FG fast break in the paint, layup made (4)	34-10	24	
06:28	5 MILES O assist (4)			
06:12				21 DALEY A 3pt FG , jump shot missed
06:09	defensive rebound (19)			
06:08	21 WESTBELD M substitution out			
06:08	33 EBO L substitution out			



Official Basketball Play by Play - 2nd Period
Boston College at Notre Dame
 01/01/23 Purcell Pavilion at the Joyce Center, Notre Dame, Ind.
 2022-23 Women's Basketball

Game Time: 12:00 PM
Game Duration: 1:44
Attendance: 5,532

Officials: Carla Fountain, Rod Creech, Brandon Enterline

Game Time	UND	Score	Diff	BOS
06:08	15 MARSHALL N substitution in			
06:08	22 WATSON K substitution in			
06:08				12 VANTIMMEREN A substitution out
06:08				21 DALEY A substitution out
06:08				4 LACEY J substitution in
06:08				14 LEZAMA K substitution in
05:54	22 WATSON K 2pt FG in the paint, layup made (2)	36-10	26	
05:54	4 PROSPER C assist (1)			
05:54	22 WATSON K foul drawn (2)			4 LACEY J foul shooting (2 - 1)
05:54	11 CITRON S substitution out			
05:54	1 MABREY D substitution in			
05:54	22 WATSON K free throw 1 - 1 made (3)	37-10	27	
05:42	1 MABREY D steal (2)			20 MAIR T turnover bad pass (1)
05:31	22 WATSON K 2pt FG from turnover in the paint, driving layup made (5)	39-10	29	
05:31	1 MABREY D assist (1)			
05:31	22 WATSON K foul drawn (3)			14 LEZAMA K foul shooting (1 - 2)
05:31	22 WATSON K free throw 1 - 1 made (6)	40-10	30	
05:13				5 GAKDENG M 2pt FG in the paint, layup missed
05:10	4 PROSPER C defensive rebound (2)			
05:05	1 MABREY D foul drawn (1)			20 MAIR T foul shooting (2 - 3)
05:05	1 MABREY D free throw 1 - 3 made (3)	41-10	31	
05:05	1 MABREY D free throw 2 - 3 made (4)	42-10	32	
05:05	1 MABREY D free throw 3 - 3 made (5)	43-10	33	
04:51				4 LACEY J turnover lost ball (3)
04:50	Timeout media			
04:50	4 PROSPER C substitution out			
04:50	5 MILES O substitution out			
04:50	0 BROWN J substitution in			
04:50	14 BRANSFORD K substitution in			
04:37	22 WATSON K 2pt FG from turnover in the paint, layup blocked			
04:37				5 GAKDENG M block (3)
04:34	0 BROWN J offensive rebound (1)			
04:33	0 BROWN J 2pt FG from turnover second chance in the paint, jump shot missed			
04:30				24 WAGGONER D defensive rebound (2)
04:15				20 MAIR T 2pt FG outside the paint, step back jump shot missed
04:13	defensive rebound (22)			
04:03	15 MARSHALL N turnover bad pass (1)			24 WAGGONER D steal (1)
04:00		43-12	31	24 WAGGONER D 2pt FG fast break from turnover in the paint, layup made (6)
03:41	22 WATSON K 2pt FG in the paint, layup blocked			
03:41				5 GAKDENG M block (4)
03:38	0 BROWN J offensive rebound (2)			
03:37	0 BROWN J foul drawn (1)			20 MAIR T foul personal (3 - 4)
03:37				20 MAIR T substitution out
03:37				12 VANTIMMEREN A substitution in
03:22	14 BRANSFORD K 2pt FG second chance in the paint, layup made (13)	45-12	33	
03:22	15 MARSHALL N assist (1)			



Official Basketball Play by Play - 2nd Period
Boston College at Notre Dame
 01/01/23 Purcell Pavilion at the Joyce Center, Notre Dame, Ind.
 2022-23 Women's Basketball

Game Time: 12:00 PM
Game Duration: 1:44
Attendance: 5,532

Officials: Carla Fountain, Rod Creech, Brandon Enterline

Game Time	UND	Score	Diff	BOS
02:55	14 BRANSFORD K foul shooting (1 - 1)			4 LACEY J foul drawn (1)
02:55				4 LACEY J free throw 1 - 2 missed
02:55				offensive dead ball rebound (1)
02:55		45-13	32	4 LACEY J free throw 2 - 2 made (1)
02:42	22 WATSON K turnover bad pass (1)			12 VANTIMMEREN A steal (1)
02:33	22 WATSON K steal (1)			4 LACEY J turnover bad pass (4)
02:29	1 MABREY D turnover bad pass (2)			24 WAGGONER D steal (2)
02:21				24 WAGGONER D 2pt FG from turnover in the paint, jump shot missed
02:19	1 MABREY D defensive rebound (3)			
02:07	1 MABREY D 2pt FG in the paint, floating jump shot blocked			
02:07				5 GAKDENG M block (5)
02:07				4 LACEY J defensive rebound (3)
01:42	15 MARSHALL N foul shooting (1 - 2)			12 VANTIMMEREN A foul drawn (2)
01:42	1 MABREY D substitution out			
01:42	22 WATSON K substitution out			
01:42	5 MILES O substitution in			
01:42	33 EBO L substitution in			
01:42				4 LACEY J substitution out
01:42				3 MCGEE A substitution in
01:42				12 VANTIMMEREN A free throw 1 - 2 missed
01:42				offensive dead ball rebound (2)
01:42		45-14	31	12 VANTIMMEREN A free throw 2 - 2 made (1)
01:23	0 BROWN J foul drawn (2)			14 LEZAMA K foul personal (2 - 5)
01:23	14 BRANSFORD K substitution out			
01:23	11 CITRON S substitution in			
01:23				14 LEZAMA K substitution out
01:23				4 LACEY J substitution in
01:23	0 BROWN J free throw 1 - 2 missed			
01:23	offensive dead ball rebound (2)			
01:23	0 BROWN J free throw 2 - 2 made (1)	46-14	32	
01:12	0 BROWN J steal (1)			5 GAKDENG M turnover bad pass (2)
01:07	0 BROWN J 2pt FG fast break from turnover in the paint, driving layup made (3)	48-14	34	
00:59				4 LACEY J 3pt FG , jump shot missed
00:57	11 CITRON S defensive rebound (3)			
00:45	11 CITRON S 2pt FG in the paint, driving layup missed			
00:45	33 EBO L offensive rebound (3)			
00:45	33 EBO L foul drawn (1)			4 LACEY J foul shooting (3 - 6)
00:45				4 LACEY J substitution out
00:45				21 DALEY A substitution in
00:45	33 EBO L free throw 1 - 2 made (1)	49-14	35	
00:45	33 EBO L free throw 2 - 2 missed			
00:44				defensive rebound (14)
00:44				3 MCGEE A substitution out
00:44				14 LEZAMA K substitution in
00:17				21 DALEY A 2pt FG in the paint, driving layup missed
00:15				12 VANTIMMEREN A offensive rebound (1)
00:14		49-16	33	12 VANTIMMEREN A 2pt FG second chance in the paint, layup made (3)



Official Basketball Play by Play - 2nd Period
Boston College at Notre Dame
01/01/23 Purcell Pavilion at the Joyce Center, Notre Dame, Ind.
2022-23 Women's Basketball

Game Time: 12:00 PM
Game Duration: 1:44
Attendance: 5,532

Officials: Carla Fountain, Rod Creech, Brandon Enterline

Game Time	UND	Score	Diff	BOS
00:01	5 MILES O 3pt FG , jump shot missed			
00:00	0 BROWN J offensive rebound (3)			
END OF PERIOD				
UND 49-16 BOS				



Officials: Carla Fountain, Rod Creech, Brandon Enterline

Boston College - 8

NO.	Name	C/G	Min	FG			Rebounds			Fouls		TP	AS	TO	ST	Blocks		+/-
				M-A	M-A	M-A	OR	DR	TOT	PF	FD					BS	BA	
5	Maria Gakdeng	C	10:00	0-2	0-0	0-0	0	0	0	0	0	0	1	2	3	0	-16	
4	JoJo Lacey	G	06:35	0-1	0-1	1-2	0	1	1	2	1	0	3	0	0	0	-14	
20	Taina Mair	G	06:23	0-3	0-0	0-0	0	0	0	2	0	0	1	0	0	0	-14	
21	Andrea Daley	G	03:06	1-3	0-1	0-0	0	0	0	0	0	2	0	0	0	0	-3	
24	Dontavia Waggoner	G	10:00	1-3	0-0	0-0	0	1	1	0	0	2	1	1	2	1	-16	
14	Kayla Lezama		05:29	0-0	0-0	0-0	0	0	0	2	0	0	0	0	0	0	-5	
12	Ally VanTimmeren		07:29	1-1	0-0	1-2	1	0	1	0	1	3	0	0	1	0	-9	
3	Ava McGee		00:58	0-0	0-0	0-0	0	0	0	0	0	0	0	0	0	0	-3	
Team							0	1	1		0		0					
Totals				3-13	0-2	2-4	1	3	4	6	2	8	1	6	5	4	0	-16

Shooting By Period		
2nd FG%	3-13	23.1%
3PT%	0-2	0.0%
FT%	2-4	50%
GM FG%	3-13	23.1%
3PT%	0-2	0.0%
FT%	2-4	50.0%

Dead Ball Rebounds: 2, 0

Technical Fouls::NONE

Notre Dame - 24

NO.	Name	C/G	Min	FG			Rebounds			Fouls		TP	AS	TO	ST	Blocks		+/-
				M-A	M-A	M-A	OR	DR	TOT	PF	FD					BS	BA	
21	Maddy Westbeld	F	03:52	1-2	0-1	0-0	1	0	1	0	0	2	1	1	0	0	0	7
22	Kylee Watson	F	04:26	2-4	0-0	2-2	0	0	0	0	2	6	0	1	1	0	2	8
1	Dara Mabrey	G	04:12	0-1	0-0	3-3	0	1	1	0	1	3	1	1	1	0	1	6
5	Olivia Miles	G	06:52	1-2	0-1	0-0	0	2	2	0	0	2	2	3	0	0	0	17
11	Sonia Citron	G	05:29	2-3	1-1	0-0	0	1	1	0	0	5	0	0	0	0	0	11
4	Cassandre Prosper		05:10	0-2	0-0	0-0	1	1	2	0	0	0	1	0	1	0	1	16
33	Lauren Ebo		05:34	0-0	0-0	1-2	1	1	2	0	1	1	0	0	1	0	0	8
15	Natalija Marshall		06:08	0-0	0-0	0-0	0	0	0	1	0	0	1	1	0	0	0	9
0	Jenna Brown		04:50	1-2	0-0	1-2	3	0	3	0	2	3	0	0	1	0	0	0
14	KK Bransford		03:27	1-1	0-0	0-0	0	0	0	1	0	2	0	0	0	0	0	-2
Team							1	3	4		0		0					
Totals				8-17	1-3	7-9	7	9	16	2	6	24	6	7	5	0	4	16

Shooting By Period		
2nd FG%	8-17	47.1%
3PT%	1-3	33.3%
FT%	7-9	77.8%
GM FG%	8-17	47.1%
3PT%	1-3	33.3%
FT%	7-9	77.8%

Dead Ball Rebounds: 1, 0

Technical Fouls::NONE

	BOS	UND
Biggest lead	0 (1 st 10:00)	35 (2 nd 0:45)
Best Scoring Run	2(2 nd 7:38)	13(2 nd 5:05)
Lead Changes	0	
Times Tied	0	
Time with Lead	00:00	09:14

Points from	BOS	UND
Turnovers	4	8
Paint	6	14
Second Chance	2	8
Fast Breaks	4	6
Bench	3	6

	Period by Period Scoring				
	1st	2nd	3rd	4th	TOT
BOS	8	8	19	13	48
UND	25	24	12	24	85



Officials: Carla Fountain, Rod Creech, Brandon Enterline

Boston College - 16

NO.	Name	C	Min	FG	3P	FT	Rebounds			Fouls		TP	AS	TO	ST	Blocks		+/-
				M-A	M-A	M-A	OR	DR	TOT	PF	FD					BS	BA	
5	Maria Gakdeng	C	18:14	1-3	0-0	0-0	2	0	2	1	0	2	0	2	3	5	0	-28
4	JoJo Lacey	G	16:07	0-3	0-1	1-2	0	3	3	3	1	1	1	4	0	0	1	-27
20	Taina Mair	G	16:23	1-10	0-1	0-0	0	2	2	3	0	2	0	1	0	0	0	-31
21	Andrea Daley	G	08:54	1-5	0-1	0-0	0	0	0	2	0	2	0	3	0	0	0	-19
24	Dontavia Waggoner	G	20:00	3-8	0-0	0-0	0	2	2	1	0	6	2	2	2	2	1	-33
12	Ally VanTimmeren		13:22	1-3	0-2	1-2	1	0	1	0	2	3	0	0	1	0	0	-19
14	Kayla Lezama		06:02	0-0	0-0	0-0	0	0	0	2	0	0	0	1	0	0	0	-5
3	Ava McGee		00:58	0-0	0-0	0-0	0	0	0	0	0	0	0	0	0	0	0	-3
Team							2	3	5			0						
Totals				7-32	0-5	2-4	5	10	15	12	3	16	3	13	6	7	2	-33

Shooting By Period		
1 st FG%	4-19	21.1%
3PT%	0-3	0.0%
FT%	0-0	0%
2 nd FG%	3-13	23.1%
3PT%	0-2	0.0%
FT%	2-4	50%
GM FG%	7-32	21.9%
3PT%	0-5	0.0%
FT%	2-4	50.0%

Dead Ball Rebounds: 2, 0

Technical Fouls::NONE

Notre Dame - 49

NO.	Name	C	Min	FG	3P	FT	Rebounds			Fouls		TP	AS	TO	ST	Blocks		+/-
				M-A	M-A	M-A	OR	DR	TOT	PF	FD					BS	BA	
21	Maddy Westbeld	F	11:46	2-5	0-1	0-0	1	1	2	0	0	4	3	2	1	0	1	26
22	Kylee Watson	F	11:53	2-5	0-0	2-2	0	3	3	0	3	6	1	1	1	2	3	18
1	Dara Mabrey	G	11:55	1-3	0-1	3-3	0	3	3	1	1	5	1	2	2	0	1	18
5	Olivia Miles	G	14:46	3-6	0-2	2-3	0	4	4	0	2	8	4	3	3	0	0	36
11	Sonia Citron	G	13:59	4-5	1-1	0-0	0	3	3	0	0	9	2	1	2	0	0	21
33	Lauren Ebo		10:13	0-1	0-0	1-2	1	2	3	0	1	1	0	0	1	0	1	13
14	KK Bransford		09:20	4-4	0-0	5-5	0	0	0	1	3	13	0	0	0	0	0	8
4	Cassandre Prosper		05:10	0-2	0-0	0-0	1	1	2	0	0	0	1	0	1	0	1	16
15	Natalija Marshall		06:08	0-0	0-0	0-0	0	0	0	1	0	0	1	1	0	0	0	9
0	Jenna Brown		04:50	1-2	0-0	1-2	3	0	3	0	2	3	0	0	1	0	0	0
Team							1	3	4			0						
Totals				17-33	1-5	14-17	7	20	27	3	12	49	13	10	12	2	7	33

Shooting By Period		
1 st FG%	9-16	56.3%
3PT%	0-2	0.0%
FT%	7-8	87.5%
2 nd FG%	8-17	47.1%
3PT%	1-3	33.3%
FT%	7-9	77.8%
GM FG%	17-33	51.5%
3PT%	1-5	20.0%
FT%	14-17	82.4%

Dead Ball Rebounds: 2, 0

Technical Fouls::NONE

	BOS	UND
Biggest lead	0 (1 st 10:00)	35 (2 nd 0:45)
Best Scoring Run	4 (1 st 6:33)	13 (2 nd 5:05)
Lead Changes	0	
Times Tied	0	
Time with Lead	00:00	19:55

Points from	BOS	UND
Turnovers	6	15
Paint	12	32
Second Chance	2	8
Fast Breaks	6	16
Bench	3	17

	Period by Period Scoring				
	1st	2nd	3rd	4th	TOT
BOS	8	8	19	13	48
UND	25	24	12	24	85



Period 3

Quarter Starters:

UND	1 Mabrey D	5 Miles O	11 Citron S	21 Westbeld M	22 Watson K
BOS	4 Lacey J	5 Gakdeng M	20 Mair T	21 Daley A	24 Waggoner D

Game Time	UND	Score	Diff	BOS
10:00	0 BROWN J substitution out			
10:00	15 MARSHALL N substitution out			
10:00	33 EBO L substitution out			
10:00	1 MABREY D substitution in			
10:00	21 WESTBELD M substitution in			
10:00	22 WATSON K substitution in			
10:00				12 VANTIMMEREN A substitution out
10:00				14 LEZAMA K substitution out
10:00				4 LACEY J substitution in
10:00				20 MAIR T substitution in
09:37	11 CITRON S steal (3)			24 WAGGONER D turnover bad pass (3)
09:37	jump ball situation			
09:17	22 WATSON K 2pt FG from turnover in the paint, layup missed			
09:14				5 GAKDENG M defensive rebound (3)
09:11				4 LACEY J 3pt FG , jump shot missed
09:08	11 CITRON S defensive rebound (4)			
09:03	22 WATSON K turnover lost ball (2)			20 MAIR T steal (1)
08:50	22 WATSON K steal (2)			4 LACEY J turnover bad pass (5)
08:42	21 WESTBELD M 2pt FG from turnover in the paint, layup blocked			
08:42				5 GAKDENG M block (6)
08:38				24 WAGGONER D defensive rebound (3)
08:36		49-18	31	21 DALEY A 2pt FG fast break in the paint, layup made (4)
08:36				24 WAGGONER D assist (3)
08:10	5 MILES O 2pt FG in the paint, pull up jump shot made (10)	51-18	33	
07:40	21 WESTBELD M foul shooting (1 - 1)			24 WAGGONER D foul drawn (1)
07:40	22 WATSON K substitution out			
07:40	33 EBO L substitution in			
07:40				4 LACEY J substitution out
07:40				12 VANTIMMEREN A substitution in
07:40				24 WAGGONER D free throw 1 - 2 missed
07:40				offensive dead ball rebound (3)
07:40		51-19	32	24 WAGGONER D free throw 2 - 2 made (7)
07:23	5 MILES O foul drawn (3)			24 WAGGONER D foul shooting (2 - 1)
07:23	5 MILES O free throw 1 - 2 missed			
07:23	offensive dead ball rebound (3)			
07:23	5 MILES O free throw 2 - 2 made (11)	52-19	33	
07:11				12 VANTIMMEREN A 2pt FG in the paint, driving layup blocked
07:11	11 CITRON S block (1)			
07:07	11 CITRON S defensive rebound (5)			
06:50	11 CITRON S foul drawn (1)			12 VANTIMMEREN A foul personal (1 - 2)
06:42	5 MILES O 2pt FG in the paint, driving layup made (13)	54-19	35	
06:19	21 WESTBELD M foul shooting (2 - 2)			20 MAIR T foul drawn (1)



Official Basketball Play by Play - 3rd Period
Boston College at Notre Dame
 01/01/23 Purcell Pavilion at the Joyce Center, Notre Dame, Ind.
 2022-23 Women's Basketball

Game Time: 12:00 PM
Game Duration: 1:44
Attendance: 5,532

Officials: Carla Fountain, Rod Creech, Brandon Enterline

Game Time	UND	Score	Diff	BOS
06:19	11 CITRON S substitution out			
06:19	21 WESTBELD M substitution out			
06:19	14 BRANSFORD K substitution in			
06:19	22 WATSON K substitution in			
06:19		54-20	34	20 MAIR T free throw 1 - 2 made (3)
06:19		54-21	33	20 MAIR T free throw 2 - 2 made (4)
06:04	1 MABREY D turnover 3 seconds (3)			
05:48				5 GAKDENG M 2pt FG from turnover in the paint, jump shot missed
05:45	5 MILES O defensive rebound (5)			
05:38	5 MILES O foul offensive (1 - 3)			24 WAGGONER D foul drawn (2)
05:38	5 MILES O turnover offensive (4)			
05:38	1 MABREY D substitution out			
05:38	11 CITRON S substitution in			
05:38				5 GAKDENG M substitution out
05:38				4 LACEY J substitution in
05:21		54-23	31	21 DALEY A 2pt FG from turnover in the paint, layup made (6)
05:02	11 CITRON S 2pt FG in the paint, layup made (11)	56-23	33	
05:02	33 EBO L assist (1)			
04:40				24 WAGGONER D 2pt FG in the paint, driving layup blocked
04:40	22 WATSON K block (3)			
04:40	defensive rebound (31)			
04:40	Timeout media			
04:40	22 WATSON K substitution out			
04:40	21 WESTBELD M substitution in			
04:40				12 VANTIMMEREN A substitution out
04:40				24 WAGGONER D substitution out
04:40				3 MCGEE A substitution in
04:40				5 GAKDENG M substitution in
04:25	21 WESTBELD M 2pt FG in the paint, layup made (6)	58-23	35	
04:25	5 MILES O assist (5)			
04:08		58-25	33	20 MAIR T 2pt FG in the paint, driving layup made (6)
03:59	14 BRANSFORD K foul drawn (4)			5 GAKDENG M foul shooting (2 - 3)
03:59				4 LACEY J substitution out
03:59				12 VANTIMMEREN A substitution in
03:59	14 BRANSFORD K free throw 1 - 2 missed			
03:59	offensive dead ball rebound (4)			
03:59	14 BRANSFORD K free throw 2 - 2 made (14)	59-25	34	
03:33				20 MAIR T 3pt FG , jump shot missed
03:31				12 VANTIMMEREN A offensive rebound (2)
03:27		59-27	32	20 MAIR T 2pt FG second chance outside the paint, jump shot made (8)
03:05	21 WESTBELD M 2pt FG in the paint, driving layup missed			
03:02	33 EBO L offensive rebound (4)			
03:01	33 EBO L 2pt FG second chance in the paint, layup made (3)	61-27	34	
02:37		61-29	32	20 MAIR T 2pt FG in the paint, driving layup made (10)
02:14	14 BRANSFORD K turnover dribbling violation (1)			
02:14	11 CITRON S substitution out			
02:14	1 MABREY D substitution in			



Official Basketball Play by Play - 3rd Period
Boston College at Notre Dame
 01/01/23 Purcell Pavilion at the Joyce Center, Notre Dame, Ind.
 2022-23 Women's Basketball

Game Time: 12:00 PM
Game Duration: 1:44
Attendance: 5,532

Officials: Carla Fountain, Rod Creech, Brandon Enterline

Game Time	UND	Score	Diff	BOS
01:43		61-31	30	21 DALEY A 2pt FG from turnover in the paint, driving layup made (8)
01:25	5 MILES O foul drawn (4)			12 VANTIMMEREN A foul personal (2 - 4)
01:25	14 BRANSFORD K substitution out			
01:25	4 PROSPER C substitution in			
01:24	1 MABREY D 3pt FG , jump shot missed			
01:19				5 GAKDENG M defensive rebound (4)
01:09		61-33	28	21 DALEY A 2pt FG in the paint, layup made (10)
00:51	5 MILES O turnover bad pass (5)			
00:23				21 DALEY A 3pt FG from turnover, jump shot missed
00:19				3 MCGEE A offensive rebound (1)
00:17	21 WESTBELD M foul shooting (3 - 4)			3 MCGEE A foul drawn (1)
00:17	21 WESTBELD M substitution out			
00:17	22 WATSON K substitution in			
00:17		61-34	27	3 MCGEE A free throw 1 - 2 made (1)
00:17		61-35	26	3 MCGEE A free throw 2 - 2 made (2)
00:04	33 EBO L foul offensive (1 - 5)			12 VANTIMMEREN A foul drawn (3)
00:04	33 EBO L turnover offensive (1)			
00:04				3 MCGEE A substitution out
00:04				4 LACEY J substitution in
END OF PERIOD				
UND 61-35 BOS				



Officials: Carla Fountain, Rod Creech, Brandon Enterline

Boston College - 19

NO.	Name	C/G	Min	FG			Rebounds			Fouls		TP	AS	TO	ST	Blocks		+/-
				M-A	M-A	M-A	OR	DR	TOT	PF	FD					BS	BA	
5	Maria Gakdeng	C	09:02	0-1	0-0	0-0	0	2	2	1	0	0	0	0	0	1	0	7
4	JoJo Lacey	G	04:03	0-1	0-1	0-0	0	0	0	0	0	0	1	0	0	0	0	0
20	Taina Mair	G	10:00	3-4	0-1	2-2	0	0	0	0	1	8	0	0	1	0	0	7
21	Andrea Daley	G	10:00	4-5	0-1	0-0	0	0	0	0	0	8	0	0	0	0	0	7
24	Dontavia Waggoner	G	05:20	0-1	0-0	1-2	0	1	1	1	2	1	1	1	0	0	1	0
14	Kayla Lezama		00:00	0-0	0-0	0-0	0	0	0	0	0	0	0	0	0	0	0	0
12	Ally VanTimmeren		06:59	0-1	0-0	0-0	1	0	1	2	1	0	0	0	0	0	1	7
3	Ava McGee		04:36	0-0	0-0	2-2	1	0	1	0	1	2	0	0	0	0	0	7
Team							0	0	0		0		0					
Totals				7-13	0-3	5-6	2	3	5	4	5	19	1	2	1	1	2	7

Shooting By Period		
3rd FG%	7-13	53.8%
3PT%	0-3	0.0%
FT%	5-6	83.3%
GM FG%	7-13	53.8%
3PT%	0-3	0.0%
FT%	5-6	83.3%

Dead Ball Rebounds: 1, 0

Technical Fouls::NONE

Notre Dame - 12

NO.	Name	C/G	Min	FG			Rebounds			Fouls		TP	AS	TO	ST	Blocks		+/-	
				M-A	M-A	M-A	OR	DR	TOT	PF	FD					BS	BA		
21	Maddy Westbeld	F	08:04	1-3	0-0	0-0	0	0	0	3	0	2	0	0	0	0	1	-3	
22	Kylee Watson	F	04:16	0-1	0-0	0-0	0	0	0	0	0	0	0	1	1	1	0	-4	
1	Dara Mabrey	G	06:36	0-1	0-1	0-0	0	0	0	0	0	0	0	1	0	0	0	-6	
5	Olivia Miles	G	10:00	2-2	0-0	1-2	0	1	1	1	2	5	1	2	0	0	0	-7	
11	Sonia Citron	G	07:05	1-1	0-0	0-0	0	2	2	0	1	2	0	0	1	1	0	1	
0	Jenna Brown		00:00	0-0	0-0	0-0	0	0	0	0	0	0	0	0	0	0	0	0	
15	Natalija Marshall		00:00	0-0	0-0	0-0	0	0	0	0	0	0	0	0	0	0	0	0	
33	Lauren Ebo		07:40	1-1	0-0	0-0	1	0	1	1	0	2	1	1	0	0	0	-7	
14	KK Bransford		04:54	0-0	0-0	1-2	0	0	0	0	1	1	0	1	0	0	0	-5	
4	Cassandre Prosper		01:25	0-0	0-0	0-0	0	0	0	0	0	0	0	0	0	0	0	-4	
Team							0	1	1		0		0						
Totals				5-9	0-1	2-4	1	4	5	5	4	12	2	6	2	2	2	1	-7

Shooting By Period		
3rd FG%	5-9	55.6%
3PT%	0-1	0.0%
FT%	2-4	50%
GM FG%	5-9	55.6%
3PT%	0-1	0.0%
FT%	2-4	50.0%

Dead Ball Rebounds: 2, 0

Technical Fouls::NONE

	BOS	UND
Biggest lead	0 (1 st 10:00)	35 (3 rd 6:42)
Best Scoring Run	8(3 rd 0:17)	4(3 rd 4:25)
Lead Changes	0	
Times Tied	0	
Time with Lead	00:00	09:17

Points from	BOS	UND
Turnovers	6	0
Paint	12	10
Second Chance	4	2
Fast Breaks	2	0
Bench	2	3

	Period by Period Scoring				
	1st	2nd	3rd	4th	TOT
BOS	8	8	19	13	48
UND	25	24	12	24	85



Period 4

Quarter Starters:

UND	1 Mabrey D	4 Prosper C	11 Citron S	22 Watson K	33 Ebo L
BOS	4 Lacey J	5 Gakdeng M	20 Mair T	21 Daley A	24 Waggoner D

Game Time	UND	Score	Diff	BOS
10:00	5 MILES O substitution out			
10:00	11 CITRON S substitution in			
10:00				12 VANTIMMEREN A substitution out
10:00				24 WAGGONER D substitution in
09:44				4 LACEY J 2pt FG in the paint, pull up jump shot missed
09:42	defensive rebound (33)			
09:29	4 PROSPER C 3pt FG , jump shot made (3)	64-35	29	
09:29	11 CITRON S assist (3)			
09:10		64-37	27	4 LACEY J 2pt FG in the paint, layup made (3)
09:10				5 GAKDENG M assist (1)
08:51	11 CITRON S 2pt FG in the paint, floating jump shot made (13)	66-37	29	
08:40				20 MAIR T 2pt FG outside the paint, jump shot missed
08:37	22 WATSON K defensive rebound (4)			
08:29	1 MABREY D 2pt FG outside the paint, jump shot missed			
08:26				5 GAKDENG M defensive rebound (5)
08:24	4 PROSPER C foul shooting (1 - 1)			21 DALEY A foul drawn (1)
08:24				4 LACEY J substitution out
08:24				5 GAKDENG M substitution out
08:24				3 MCGEE A substitution in
08:24				12 VANTIMMEREN A substitution in
08:24				21 DALEY A free throw fast break 1 - 2 missed
08:24				offensive dead ball rebound (4)
08:24				21 DALEY A free throw fast break 2 - 2 missed
08:22				3 MCGEE A offensive rebound (2)
08:18	22 WATSON K substitution out			
08:18	14 BRANSFORD K substitution in			
08:16				21 DALEY A 2pt FG second chance outside the paint, jump shot missed
08:13	4 PROSPER C defensive rebound (3)			
08:04	33 EBO L 2pt FG in the paint, jump shot missed			
08:01				3 MCGEE A defensive rebound (3)
07:56	33 EBO L foul shooting (2 - 2)			21 DALEY A foul drawn (2)
07:56				21 DALEY A free throw fast break 1 - 2 missed
07:56				offensive dead ball rebound (5)
07:56		66-38	28	21 DALEY A free throw fast break 2 - 2 made (11)
07:46	4 PROSPER C turnover bad pass (1)			
07:34				24 WAGGONER D 2pt FG from turnover in the paint, layup blocked
07:34	11 CITRON S block (2)			
07:31	33 EBO L defensive rebound (5)			
07:29	1 MABREY D 2pt FG in the paint, layup missed			
07:26	4 PROSPER C offensive rebound (4)			
07:25	4 PROSPER C 2pt FG second chance in the paint, jump shot missed			



Official Basketball Play by Play - 4th Period
Boston College at Notre Dame
 01/01/23 Purcell Pavilion at the Joyce Center, Notre Dame, Ind.
 2022-23 Women's Basketball

Game Time: 12:00 PM
Game Duration: 1:44
Attendance: 5,532

Officials: Carla Fountain, Rod Creech, Brandon Enterline

Game Time	UND	Score	Diff	BOS
07:24				24 WAGGONER D defensive rebound (4)
07:10	33 EBO L foul personal (3 - 3)			12 VANTIMMEREN A foul drawn (4)
07:10				20 MAIR T turnover bad pass (2)
07:10				12 VANTIMMEREN A substitution out
07:10				5 GAKDENG M substitution in
07:01	4 PROSPER C 2pt FG from turnover in the paint, layup made (5)	68-38	30	
07:01	33 EBO L assist (2)			
06:54				20 MAIR T 2pt FG in the paint, pull up jump shot missed
06:51	33 EBO L defensive rebound (6)			
06:38	14 BRANSFORD K 2pt FG outside the paint, pull up jump shot made (16)	70-38	32	
06:38	11 CITRON S assist (4)			
06:23		70-40	30	21 DALEY A 2pt FG in the paint, layup made (13)
06:10	33 EBO L 2pt FG in the paint, layup made (5)	72-40	32	
06:10	1 MABREY D assist (2)			
06:07	Timeout 30 Sec			
06:07	1 MABREY D substitution out			
06:07	33 EBO L substitution out			
06:07	5 MILES O substitution in			
06:07	21 WESTBELD M substitution in			
06:07				3 MCGEE A substitution out
06:07				20 MAIR T substitution out
06:07				4 LACEY J substitution in
06:07				14 LEZAMA K substitution in
05:58	4 PROSPER C steal (2)			4 LACEY J turnover lost ball (6)
05:54	4 PROSPER C 2pt FG fast break from turnover in the paint, layup made (7)	74-40	34	
05:31				5 GAKDENG M 2pt FG in the paint, layup missed
05:28				offensive rebound (25)
05:21				5 GAKDENG M 2pt FG second chance in the paint, layup missed
05:18	5 MILES O defensive rebound (6)			
05:08	5 MILES O 2pt FG in the paint, driving layup made (15)	76-40	36	
04:59				14 LEZAMA K 3pt FG , jump shot missed
04:55				21 DALEY A offensive rebound (1)
04:55	11 CITRON S foul personal (1 - 4)			21 DALEY A foul drawn (3)
04:55				Timeout media
04:55				5 GAKDENG M substitution out
04:55				14 LEZAMA K substitution out
04:55				12 VANTIMMEREN A substitution in
04:55				20 MAIR T substitution in
04:55				4 LACEY J substitution out
04:55				14 LEZAMA K substitution in
04:52				24 WAGGONER D 2pt FG second chance outside the paint, jump shot missed
04:48	4 PROSPER C defensive rebound (5)			
04:42	jump ball situation			
04:39	11 CITRON S 2pt FG in the paint, driving layup missed			
04:37	11 CITRON S offensive rebound (6)			
04:36	11 CITRON S 2pt FG second chance in the paint, layup made (15)	78-40	38	



Official Basketball Play by Play - 4th Period
Boston College at Notre Dame
 01/01/23 Purcell Pavilion at the Joyce Center, Notre Dame, Ind.
 2022-23 Women's Basketball

Game Time: 12:00 PM
Game Duration: 1:44
Attendance: 5,532

Officials: Carla Fountain, Rod Creech, Brandon Enterline

Game Time	UND	Score	Diff	BOS
04:11				20 MAIR T 2pt FG outside the paint, floating jump shot missed
04:08				21 DALEY A offensive rebound (2)
04:07		78-42	36	21 DALEY A 2pt FG second chance in the paint, layup made (15)
03:36	5 MILES O 2pt FG in the paint, driving layup made (17)	80-42	38	
03:29				20 MAIR T 2pt FG in the paint, floating jump shot missed
03:25	4 PROSPER C defensive rebound (6)			
03:22	14 BRANSFORD K foul drawn (5)			14 LEZAMA K foul shooting (3 - 1)
03:22	5 MILES O substitution out			
03:22	11 CITRON S substitution out			
03:22	21 WESTBELD M substitution out			
03:22	0 BROWN J substitution in			
03:22	15 MARSHALL N substitution in			
03:22	25 CERNUGEL S substitution in			
03:22				14 LEZAMA K substitution out
03:22				20 MAIR T substitution out
03:22				3 MCGEE A substitution in
03:22				4 LACEY J substitution in
03:22	14 BRANSFORD K free throw fast break 1 - 2 missed			
03:22	offensive dead ball rebound (5)			
03:22	14 BRANSFORD K free throw fast break 2 - 2 made (17)	81-42	39	
03:05				12 VANTIMMEREN A 2pt FG in the paint, hook shot blocked
03:05	15 MARSHALL N block (1)			
03:00				4 LACEY J offensive rebound (4)
02:59		81-44	37	3 MCGEE A 2pt FG second chance in the paint, layup made (4)
02:59				4 LACEY J assist (2)
02:44	4 PROSPER C foul drawn (1)			21 DALEY A foul personal (3 - 2)
02:40	jump ball situation			
02:40	4 PROSPER C turnover lost ball (2)			24 WAGGONER D steal (3)
02:25				3 MCGEE A turnover bad pass (1)
02:12	15 MARSHALL N foul offensive (2 - 5)			24 WAGGONER D foul drawn (3)
02:12	15 MARSHALL N turnover offensive (2)			
01:59		81-46	35	3 MCGEE A 2pt FG from turnover in the paint, driving layup made (6)
01:51	25 CERNUGEL S 2pt FG outside the paint, jump shot missed			
01:48	4 PROSPER C offensive rebound (7)			
01:48	4 PROSPER C 2pt FG second chance in the paint, layup blocked			
01:48				21 DALEY A block (1)
01:48	offensive rebound (44)			
01:48				24 WAGGONER D substitution out
01:48				14 LEZAMA K substitution in
01:44	15 MARSHALL N 2pt FG second chance outside the paint, turnaround jump shot made (2)	83-46	37	
01:44	14 BRANSFORD K assist (1)			
01:24				14 LEZAMA K 2pt FG in the paint, layup missed
01:22	4 PROSPER C defensive rebound (8)			
01:22	4 PROSPER C foul drawn (2)			14 LEZAMA K foul personal (4 - 3)
00:57	25 CERNUGEL S 2pt FG outside the paint, jump shot blocked			
00:57				3 MCGEE A block (1)



Official Basketball Play by Play - 4th Period
Boston College at Notre Dame
 01/01/23 Purcell Pavilion at the Joyce Center, Notre Dame, Ind.
 2022-23 Women's Basketball

Game Time: 12:00 PM
Game Duration: 1:44
Attendance: 5,532

Officials: Carla Fountain, Rod Creech, Brandon Enterline

Game Time	UND	Score	Diff	BOS
00:52	4 PROSPER C offensive rebound (9)			
00:53	0 BROWN J foul drawn (3)			4 LACEY J foul shooting (4 - 4)
00:53				12 VANTIMMEREN A substitution out
00:53				43 CARMAN A substitution in
00:53	0 BROWN J free throw 1 - 2 made (4)	84-46	38	
00:53	0 BROWN J free throw 2 - 2 made (5)	85-46	39	
00:27		85-48	37	21 DALEY A 2pt FG in the paint, floating jump shot made (17)
END OF GAME				
UND 85-48 BOS				



Officials: Carla Fountain, Rod Creech, Brandon Enterline

Boston College - 13

NO.	Name	C/G	Min	FG			Rebounds			Fouls		TP	AS	TO	ST	Blocks		+/-
				M-A	M-A	M-A	OR	DR	TOT	PF	FD					BS	BA	
5	Maria Gakdeng	C	03:51	0-2	0-0	0-0	0	1	1	0	0	0	1	0	0	0	0	-11
4	JoJo Lacey	G	06:10	1-2	0-0	0-0	1	0	1	1	0	2	1	1	0	0	0	-6
20	Taina Mair	G	05:26	0-4	0-0	0-0	0	0	0	0	0	0	0	1	0	0	0	-8
21	Andrea Daley	G	10:00	3-4	0-0	1-4	2	0	2	1	3	7	0	0	0	1	0	-11
24	Dontavia Waggoner	G	08:12	0-2	0-0	0-0	0	1	1	0	1	0	0	0	1	0	1	-9
3	Ava McGee		05:39	2-2	0-0	0-0	1	1	2	0	0	4	0	1	0	1	0	-2
12	Ally VanTimmeren		05:16	0-1	0-0	0-0	0	0	0	0	1	0	0	0	0	0	1	0
14	Kayla Lezama		04:33	0-2	0-1	0-0	0	0	0	2	0	0	0	0	0	0	0	-8
43	Ally Carman		00:53	0-0	0-0	0-0	0	0	0	0	0	0	0	0	0	0	0	0
Team							1	0	1			0		0				
Totals				6-19	0-1	1-4	5	3	8	4	5	13	2	3	1	2	2	-11

Shooting By Period		
4 th FG%	6-19	31.6%
3PT%	0-1	0.0%
FT%	1-4	25%
GM FG%	6-19	31.6%
3PT%	0-1	0.0%
FT%	1-4	25.0%

Dead Ball Rebounds: 2, 0

Technical Fouls::NONE

Notre Dame - 24

NO.	Name	C/G	Min	FG			Rebounds			Fouls		TP	AS	TO	ST	Blocks		+/-
				M-A	M-A	M-A	OR	DR	TOT	PF	FD					BS	BA	
21	Maddy Westbeld	F	02:45	0-0	0-0	0-0	0	0	0	0	0	0	0	0	0	0	0	6
22	Kylee Watson	F	01:42	0-0	0-0	0-0	0	1	1	0	0	0	0	0	0	0	0	3
1	Dara Mabrey	G	03:53	0-2	0-0	0-0	0	0	0	0	0	0	1	0	0	0	0	6
5	Olivia Miles	G	02:45	2-2	0-0	0-0	0	1	1	0	0	4	0	0	0	0	0	6
11	Sonia Citron	G	06:38	2-3	0-0	0-0	1	0	1	1	0	4	2	0	0	1	0	12
4	Cassandre Prosper		10:00	3-5	1-1	0-0	3	4	7	1	2	7	0	2	1	0	1	11
33	Lauren Ebo		03:53	1-2	0-0	0-0	0	2	2	2	0	2	1	0	0	0	0	6
14	KK Bransford		08:18	1-1	0-0	1-2	0	0	0	0	1	3	1	0	0	0	0	8
0	Jenna Brown		03:22	0-0	0-0	2-2	0	0	0	0	1	2	0	0	0	0	0	-1
15	Natalija Marshall		03:22	1-1	0-0	0-0	0	0	0	1	0	2	0	1	0	1	0	-1
25	Sarah Cernugel		03:22	0-2	0-0	0-0	0	0	0	0	0	0	0	0	0	0	1	-1
Team							1	1	2			0		0				
Totals				10-18	1-1	3-4	5	9	14	5	4	24	5	3	1	2	2	11

Shooting By Period		
4 th FG%	10-18	55.6%
3PT%	1-1	100.0%
FT%	3-4	75%
GM FG%	10-18	55.6%
3PT%	1-1	100.0%
FT%	3-4	75.0%

Dead Ball Rebounds: 1, 0

Technical Fouls::NONE

	BOS	UND
Biggest lead	0 (1 st 10:00)	39 (4 th 3:22)
Best Scoring Run	4(4 th 1:59)	8(4 th 4:36)
Lead Changes	0	
Times Tied	0	
Time with Lead	00:00	09:44

	BOS	UND
Points from		
Turnovers	2	4
Paint	12	14
Second Chance	4	6
Fast Breaks	1	3
Bench	4	16

	Period by Period Scoring				
	1st	2nd	3rd	4th	TOT
BOS	8	8	19	13	48
UND	25	24	12	24	85



Officials: Carla Fountain, Rod Creech, Brandon Enterline

Boston College - 32

NO.	Name	C/G	Min	FG			Rebounds			Fouls		TP	AS	TO	ST	Blocks		+/-
				M-A	M-A	M-A	OR	DR	TOT	PF	FD					BS	BA	
5	Maria Gakdeng	C	12:53	0-3	0-0	0-0	0	3	3	1	0	0	1	0	0	1	0	-4
4	JoJo Lacey	G	10:13	1-3	0-1	0-0	1	0	1	1	0	2	1	2	0	0	0	-6
20	Taina Mair	G	15:26	3-8	0-1	2-2	0	0	0	0	1	8	0	1	1	0	0	-1
21	Andrea Daley	G	20:00	7-9	0-1	1-4	2	0	2	1	3	15	0	0	0	1	0	-4
24	Dontavia Waggoner	G	13:32	0-3	0-0	1-2	0	2	2	1	3	1	1	1	1	0	2	-9
12	Ally VanTimmeren		12:15	0-2	0-0	0-0	1	0	1	2	2	0	0	0	0	0	2	7
3	Ava McGee		10:15	2-2	0-0	2-2	2	1	3	0	1	6	0	1	0	1	0	5
14	Kayla Lezama		04:33	0-2	0-1	0-0	0	0	0	2	0	0	0	0	0	0	0	-8
43	Ally Carman		00:53	0-0	0-0	0-0	0	0	0	0	0	0	0	0	0	0	0	0
Team							1	0	1			0		0				
Totals				13-32	0-4	6-10	7	6	13	8	10	32	3	5	2	3	4	-4

Shooting By Period		
3 rd FG%	7-13	53.8%
3PT%	0-3	0.0%
FT%	5-6	83.3%
4 th FG%	6-19	31.6%
3PT%	0-1	0.0%
FT%	1-4	25%
GM FG%	13-32	40.6%
3PT%	0-4	0.0%
FT%	6-10	60.0%

Dead Ball Rebounds: 3, 0

Technical Fouls::NONE

Notre Dame - 36

NO.	Name	C/G	Min	FG			Rebounds			Fouls		TP	AS	TO	ST	Blocks		+/-
				M-A	M-A	M-A	OR	DR	TOT	PF	FD					BS	BA	
21	Maddy Westbeld	F	10:49	1-3	0-0	0-0	0	0	0	3	0	2	0	0	0	0	1	3
22	Kylee Watson	F	05:58	0-1	0-0	0-0	0	1	1	0	0	0	0	1	1	1	0	-1
1	Dara Mabrey	G	10:29	0-3	0-1	0-0	0	0	0	0	0	0	1	1	0	0	0	0
5	Olivia Miles	G	12:45	4-4	0-0	1-2	0	2	2	1	2	9	1	2	0	0	0	-1
11	Sonia Citron	G	13:43	3-4	0-0	0-0	1	2	3	1	1	6	2	0	1	2	0	13
33	Lauren Ebo		11:33	2-3	0-0	0-0	1	2	3	3	0	4	2	1	0	0	0	-1
14	KK Bransford		13:12	1-1	0-0	2-4	0	0	0	0	2	4	1	1	0	0	0	3
4	Cassandre Prosper		11:25	3-5	1-1	0-0	3	4	7	1	2	7	0	2	1	0	1	7
0	Jenna Brown		03:22	0-0	0-0	2-2	0	0	0	0	1	2	0	0	0	0	0	-1
15	Natalija Marshall		03:22	1-1	0-0	0-0	0	0	0	1	0	2	0	1	0	1	0	-1
25	Sarah Cernugel		03:22	0-2	0-0	0-0	0	0	0	0	0	0	0	0	0	0	1	-1
Team							1	2	3			0		0				
Totals				15-27	1-2	5-8	6	13	19	10	8	36	7	9	3	4	3	4

Shooting By Period		
3 rd FG%	5-9	55.6%
3PT%	0-1	0.0%
FT%	2-4	50%
4 th FG%	10-18	55.6%
3PT%	1-1	100.0%
FT%	3-4	75%
GM FG%	15-27	55.6%
3PT%	1-2	50.0%
FT%	5-8	62.5%

Dead Ball Rebounds: 3, 0

Technical Fouls::NONE

	BOS	UND
Biggest lead	0 (1 st 10:00)	39 (4 th 3:22)
Best Scoring Run	8(3 rd 0:17)	8(4 th 4:36)
Lead Changes	0	
Times Tied	0	
Time with Lead	00:00	19:17

	BOS	UND
Points from		
Turnovers	8	4
Paint	24	24
Second Chance	8	8
Fast Breaks	3	3
Bench	6	19

	Period by Period Scoring				
	1st	2nd	3rd	4th	TOT
BOS	8	8	19	13	48
UND	25	24	12	24	85



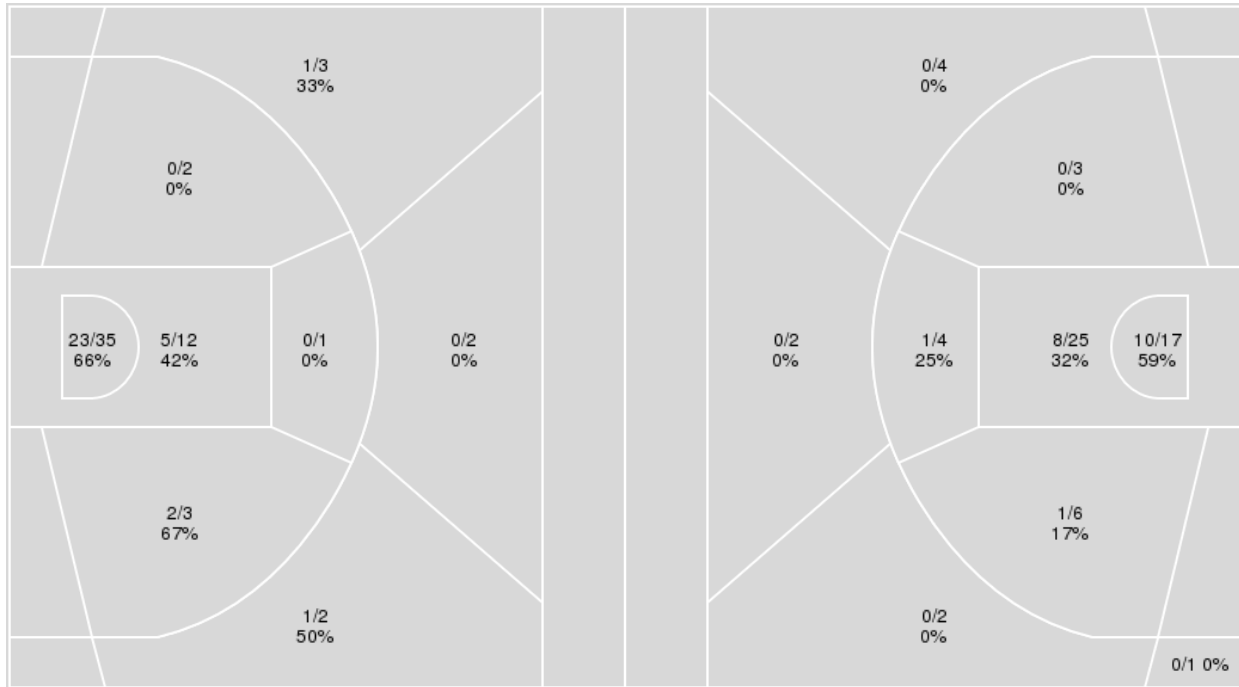
Officials: Carla Fountain, Rod Creech, Brandon Enterline

{ Players => 0, 1, 2, 4, 5, 11, 14, 15, 20, 21, 22, 25, 33; } FG Types => All; Results => All;

{ Players => 2, 3, 4, 5, 12, 14, 20, 21, 24, 30, 43, 44; } FG Types => All; Results => All;

Notre Dame

Boston College



Notre Dame	M/A	%
Field Goals	32/60	53
2 Points	30/53	57
3 Points	2/7	29
Free Throws	19/25	76

Boston College	M/A	%
Field Goals	20/64	31
2 Points	20/55	36
3 Points	0/9	0
Free Throws	8/14	57



Officials: Carla Fountain, Rod Creech, Brandon Enterline

Boston College

No	Name	Mins		Score		Points Diff		Points per Min		Assists		Rebounds		Steals		Turnovers	
		On	Off	On	Off	On	Off	On	Off	On	Off	On	Off	On	Off	On	Off
3	Ava McGee	11:13	28:47	22 - 20	26 - 65	2	-39	1.96	0.90	1	5	8	20	1	7	3	15
4	JoJo Lacey	26:20	13:40	25 - 58	23 - 27	-33	-4	0.95	1.68	5	1	19	9	6	2	17	1
5	Maria Gakdeng	31:07	08:53	37 - 69	11 - 16	-32	-5	1.19	1.24	5	1	22	6	7	1	13	5
12	Ally VanTimmeren	25:37	14:23	32 - 44	16 - 41	-12	-25	1.25	1.11	3	3	18	10	6	2	10	8
14	Kayla Lezama	10:35	29:25	10 - 23	38 - 62	-13	-24	0.94	1.29	0	6	6	22	3	5	5	13
20	Taina Mair	31:49	08:11	38 - 70	10 - 15	-32	-5	1.19	1.22	5	1	22	6	5	3	14	4
21	Andrea Daley	28:54	11:06	40 - 63	8 - 22	-23	-14	1.38	0.72	5	1	20	8	4	4	10	8
24	Dontavia Waggoner	33:32	06:28	34 - 76	14 - 9	-42	5	1.01	2.16	6	0	25	3	8	0	18	0
43	Ally Carman	00:53	39:07	2 - 2	46 - 83	0	-37	2.26	1.18	0	6	0	28	0	8	0	18

Notre Dame

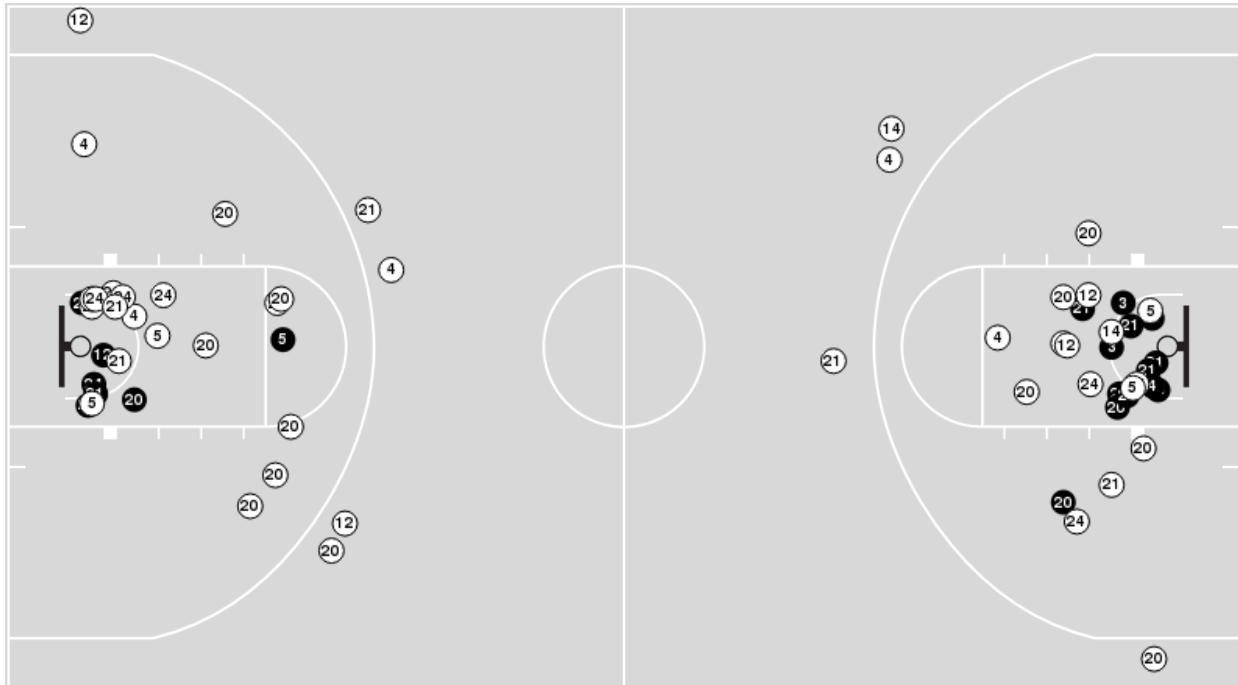
No	Name	Mins		Score		Points Diff		Points per Min		Assists		Rebounds		Steals		Turnovers	
		On	Off	On	Off	On	Off	On	Off	On	Off	On	Off	On	Off	On	Off
0	Jenna Brown	08:12	31:48	11 - 12	74 - 36	-1	38	1.34	2.33	2	18	11	35	2	13	5	14
1	Dara Mabrey	22:24	17:36	43 - 25	42 - 23	18	19	1.92	2.39	12	8	22	24	9	6	12	7
4	Cassandra Prosper	16:35	23:25	42 - 19	43 - 29	23	14	2.53	1.84	10	10	23	23	4	11	9	10
5	Olivia Miles	27:31	12:29	67 - 32	18 - 16	35	2	2.43	1.44	14	6	30	16	12	3	11	8
11	Sonia Citron	27:42	12:18	64 - 30	21 - 18	34	3	2.31	1.71	15	5	34	12	13	2	10	9
14	KK Bransford	22:32	17:28	42 - 31	43 - 17	11	26	1.86	2.46	10	10	26	20	6	9	11	8
15	Natalija Marshall	09:30	30:30	20 - 12	65 - 36	8	29	2.11	2.13	4	16	12	34	3	12	5	14
21	Maddy Westbeld	22:35	17:25	52 - 23	33 - 25	29	8	2.30	1.89	11	9	24	22	10	5	8	11
22	Kylee Watson	17:51	22:09	36 - 19	49 - 29	17	20	2.02	2.21	10	10	19	27	8	7	10	9
25	Sarah Cernugel	03:22	36:38	5 - 6	80 - 42	-1	38	1.49	2.18	1	19	4	42	0	15	2	17
33	Lauren Ebo	21:46	18:14	43 - 31	42 - 17	12	25	1.98	2.30	11	9	25	21	8	7	12	7



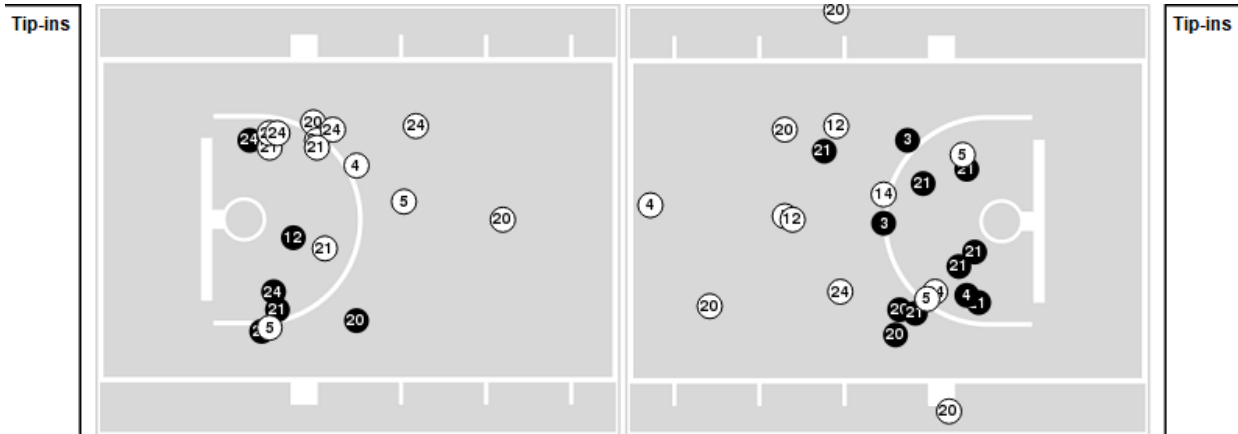
Players => 2, 3, 4, 5, 12, 14, 20, 21, 24, 30, 43, 44FG Types=>AllResults=>All

Boston College

All Field Goals



Blow Up Chart



● Made ○ Missed N - Player Number

Boston College	M/A	%
Field Goals	20/64	31
2 Points	20/55	36
3 Points	0/9	0
Free Throws	8/14	57

Boston College	M/A	%
Points in the Paint	36 (18 / 42)	43
Fast Break Points	9 (5/8)	63
Second Chance Points	10 (6/12)	50
Effective FG%	31	

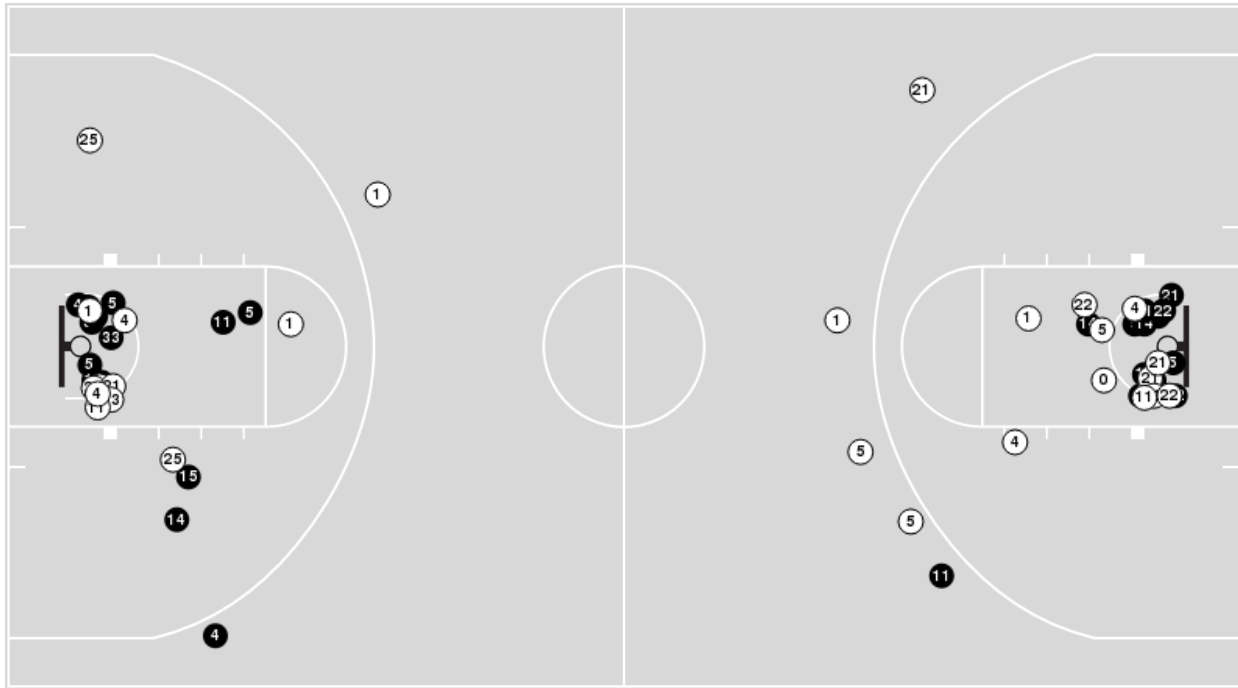


Officials: Carla Fountain, Rod Creech, Brandon Enterline

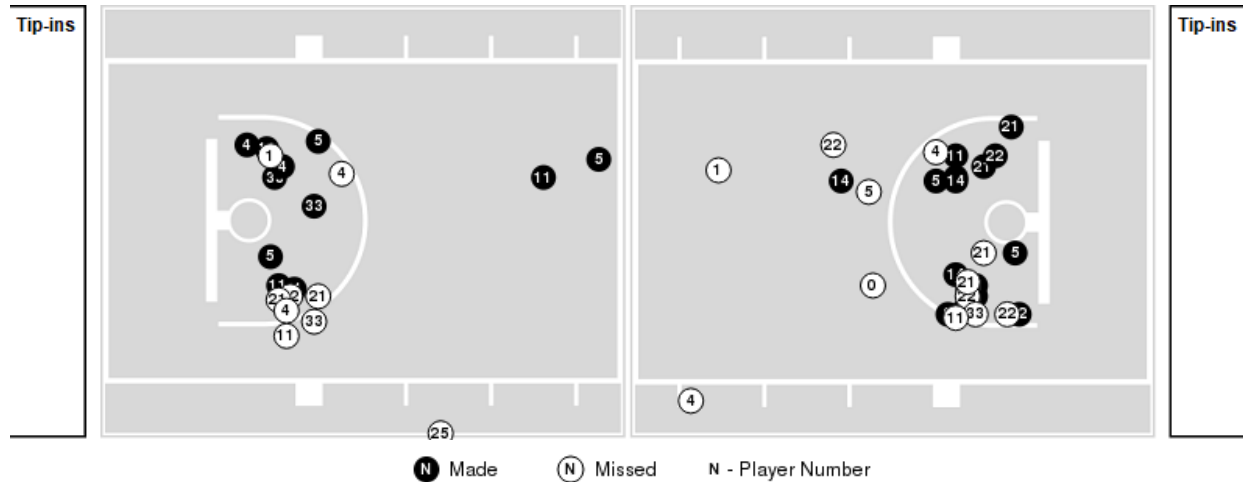
Players => 0, 1, 2, 4, 5, 11, 14, 15, 20, 21, 22, 25, 33FG Types=>AllResults=>All

Notre Dame

All Field Goals



Blow Up Chart



Notre Dame	M/A	%
Field Goals	32/60	53
2 Points	30/53	57
3 Points	2/7	29
Free Throws	19/25	76

Notre Dame	M/A	%
Points in the Paint	56 (28 / 47)	60
Fast Break Points	19 (11/13)	85
Second Chance Points	16 (9/14)	64
Effective FG%	55	



Officials: Carla Fountain, Rod Creech, Brandon Enterline

Boston College

Lineup	Quarter On	Time On	Quarter Off	Time Off	Time on Court	Score	Score Diff	Reb	Stl	Tov	Ass	PPP
4- Lacey J/ 5- Gakdeng M/ 20- Mair T/ 21- Daley A/ 24- Waggoner D/	1	10:00	1	05:53	04:07	4-11	-7	4	0	3	1	0.4444
4- Lacey J/ 12- VanTimmeren A/ 20- Mair T/ 21- Daley A/ 24- Waggoner D/	1	05:53	1	04:40	01:13	0-5	-5	1	0	2	0	0.0000
4- Lacey J/ 12- VanTimmeren A/ 14- Lezama K/ 20- Mair T/ 24- Waggoner D/	1	04:40	1	04:07	00:33	0-0	0	0	0	1	0	0.0000
4- Lacey J/ 5- Gakdeng M/ 12- VanTimmeren A/ 20- Mair T/ 24- Waggoner D/	1	04:07	1	02:34	01:33	2-0	2	2	1	1	0	0.5000
5- Gakdeng M/ 12- VanTimmeren A/ 20- Mair T/ 21- Daley A/ 24- Waggoner D/	1	02:34	1	02:06	00:28	0-4	-4	0	0	0	0	0.0000
4- Lacey J/ 5- Gakdeng M/ 12- VanTimmeren A/ 20- Mair T/ 24- Waggoner D/	1	02:06	2	08:28	03:38	2-8	-6	4	0	2	1	0.2857
5- Gakdeng M/ 12- VanTimmeren A/ 20- Mair T/ 21- Daley A/ 24- Waggoner D/	2	08:28	2	06:08	02:20	2-6	-4	0	2	0	1	0.4000
4- Lacey J/ 5- Gakdeng M/ 14- Lezama K/ 20- Mair T/ 24- Waggoner D/	2	06:08	2	03:37	02:31	2-9	-7	1	1	2	0	0.4000
4- Lacey J/ 5- Gakdeng M/ 12- VanTimmeren A/ 14- Lezama K/ 24- Waggoner D/	2	03:37	2	01:42	01:55	1-2	-1	1	2	1	0	0.3472
3- McGee A/ 5- Gakdeng M/ 12- VanTimmeren A/ 14- Lezama K/ 24- Waggoner D/	2	01:42	2	01:23	00:19	1-0	1	0	0	0	0	1.1364
3- McGee A/ 4- Lacey J/ 5- Gakdeng M/ 12- VanTimmeren A/ 24- Waggoner D/	2	01:23	2	00:45	00:37	0-3	-3	0	0	1	0	0.0000
3- McGee A/ 5- Gakdeng M/ 12- VanTimmeren A/ 21- Daley A/ 24- Waggoner D/	2	00:45	2	00:44	00:02	0-1	-1	1	0	0	0	0.0000
5- Gakdeng M/ 12- VanTimmeren A/ 14- Lezama K/ 21- Daley A/ 24- Waggoner D/	2	00:44	3	10:00	00:44	2-0	2	1	0	0	0	2.0000
4- Lacey J/ 5- Gakdeng M/ 20- Mair T/ 21- Daley A/ 24- Waggoner D/	3	10:00	3	07:40	02:20	2-2	0	2	1	2	1	0.5000
5- Gakdeng M/ 12- VanTimmeren A/ 20- Mair T/ 21- Daley A/ 24- Waggoner D/	3	07:40	3	05:38	02:02	3-3	0	0	0	0	0	0.7979
4- Lacey J/ 12- VanTimmeren A/ 20- Mair T/ 21- Daley A/ 24- Waggoner D/	3	05:38	3	04:40	00:58	2-2	0	0	0	0	0	1.0000
3- McGee A/ 4- Lacey J/ 5- Gakdeng M/ 20- Mair T/ 21- Daley A/	3	04:40	3	03:59	00:41	2-2	0	0	0	0	0	2.0000
3- McGee A/ 5- Gakdeng M/ 12- VanTimmeren A/ 20- Mair T/ 21- Daley A/	3	03:59	3	00:04	03:55	10-3	7	3	0	0	0	2.0492
4- Lacey J/ 5- Gakdeng M/ 12- VanTimmeren A/ 20- Mair T/ 21- Daley A/	3	00:04	4	10:00	00:04	0-0	0	0	0	0	0	0.0000
4- Lacey J/ 5- Gakdeng M/ 20- Mair T/ 21- Daley A/ 24- Waggoner D/	4	10:00	4	08:24	01:36	2-5	-3	1	0	0	1	0.6667
3- McGee A/ 12- VanTimmeren A/ 20- Mair T/ 21- Daley A/ 24- Waggoner D/	4	08:24	4	07:10	01:14	1-0	1	3	0	1	0	0.2660
3- McGee A/ 5- Gakdeng M/ 20- Mair T/ 21- Daley A/ 24- Waggoner D/	4	07:10	4	06:07	01:03	2-6	-4	0	0	0	0	1.0000
4- Lacey J/ 5- Gakdeng M/ 14- Lezama K/ 21- Daley A/ 24- Waggoner D/	4	06:07	4	04:55	01:12	0-4	-4	2	0	1	0	0.0000
4- Lacey J/ 12- VanTimmeren A/ 20- Mair T/ 21- Daley A/ 24- Waggoner D/	4	04:55	4	04:55	00:00	0-0	0	0	0	0	0	0.0000
12- VanTimmeren A/ 14- Lezama K/ 20- Mair T/ 21- Daley A/ 24- Waggoner D/	4	04:55	4	03:22	01:33	2-4	-2	1	0	0	0	0.6667
3- McGee A/ 4- Lacey J/ 12- VanTimmeren A/ 21- Daley A/ 24- Waggoner D/	4	03:22	4	01:48	01:34	4-1	3	1	1	1	1	1.3333
3- McGee A/ 4- Lacey J/ 12- VanTimmeren A/ 14- Lezama K/ 21- Daley A/	4	01:48	4	00:53	00:55	0-2	-2	0	0	0	0	0.0000
3- McGee A/ 4- Lacey J/ 14- Lezama K/ 21- Daley A/ 43- Carman A/	4	00:53	4	00:00	00:53	2-2	0	0	0	0	0	2.0000



Official Basketball Rotations Summary - Final
Boston College at Notre Dame
 01/01/23 Purcell Pavilion at the Joyce Center, Notre Dame, Ind.
 2022-23 Women's Basketball

Game Time: 12:00 PM
Game Duration: 1:44
Attendance: 5,532

Officials: Carla Fountain, Rod Creech, Brandon Enterline

Notre Dame

Lineup	Quarter On	Time On	Quarter Off	Time Off	Time on Court	Score	Score Diff	Reb	Stl	Tov	Ass	PPP
1- Mabrey D/ 5- Miles O/ 11- Citron S/ 21- Westbeld M/ 22- Watson K/	1	10:00	1	07:13	02:47	7-2	5	3	2	1	3	1.0174
1- Mabrey D/ 5- Miles O/ 11- Citron S/ 21- Westbeld M/ 33- Ebo L/	1	07:13	1	05:53	01:20	4-2	2	1	1	0	1	1.3333
5- Miles O/ 11- Citron S/ 14- Bransford K/ 21- Westbeld M/ 33- Ebo L/	1	05:53	1	04:40	01:13	5-0	5	1	2	0	1	1.4535
1- Mabrey D/ 11- Citron S/ 14- Bransford K/ 22- Watson K/ 33- Ebo L/	1	04:40	1	02:34	02:06	0-2	-2	2	2	2	0	0.0000
1- Mabrey D/ 5- Miles O/ 14- Bransford K/ 21- Westbeld M/ 22- Watson K/	1	02:34	1	01:04	01:30	7-0	7	2	0	0	2	2.1084
5- Miles O/ 11- Citron S/ 14- Bransford K/ 21- Westbeld M/ 22- Watson K/	1	01:04	2	10:00	01:04	2-2	0	2	0	0	0	1.0638
4- Prosper C/ 5- Miles O/ 11- Citron S/ 21- Westbeld M/ 33- Ebo L/	2	10:00	2	06:08	03:52	9-2	7	8	2	4	3	1.1250
4- Prosper C/ 5- Miles O/ 11- Citron S/ 15- Marshall N/ 22- Watson K/	2	06:08	2	05:54	00:14	2-0	2	0	0	0	1	2.0000
1- Mabrey D/ 4- Prosper C/ 5- Miles O/ 15- Marshall N/ 22- Watson K/	2	05:54	2	04:50	01:04	7-0	7	1	1	0	1	2.1875
0- Brown J/ 1- Mabrey D/ 14- Bransford K/ 15- Marshall N/ 22- Watson K/	2	04:50	2	01:42	03:08	2-3	-1	4	1	3	1	0.3333
0- Brown J/ 5- Miles O/ 14- Bransford K/ 15- Marshall N/ 33- Ebo L/	2	01:42	2	01:23	00:19	0-1	-1	0	0	0	0	0.0000
0- Brown J/ 5- Miles O/ 11- Citron S/ 15- Marshall N/ 33- Ebo L/	2	01:23	3	10:00	01:23	4-2	2	3	1	0	0	1.4493
1- Mabrey D/ 5- Miles O/ 11- Citron S/ 21- Westbeld M/ 22- Watson K/	3	10:00	3	07:40	02:20	2-2	0	1	2	1	0	0.5000
1- Mabrey D/ 5- Miles O/ 11- Citron S/ 21- Westbeld M/ 33- Ebo L/	3	07:40	3	06:19	01:21	3-1	2	1	0	0	0	1.5957
1- Mabrey D/ 5- Miles O/ 14- Bransford K/ 22- Watson K/ 33- Ebo L/	3	06:19	3	05:38	00:41	0-2	-2	1	0	2	0	0.0000
5- Miles O/ 11- Citron S/ 14- Bransford K/ 22- Watson K/ 33- Ebo L/	3	05:38	3	04:40	00:58	2-2	0	1	0	0	1	2.0000
5- Miles O/ 11- Citron S/ 14- Bransford K/ 21- Westbeld M/ 33- Ebo L/	3	04:40	3	02:14	02:26	5-6	-1	1	0	1	1	1.2887
1- Mabrey D/ 5- Miles O/ 14- Bransford K/ 21- Westbeld M/ 33- Ebo L/	3	02:14	3	01:25	00:49	0-2	-2	0	0	0	0	0.0000
1- Mabrey D/ 4- Prosper C/ 5- Miles O/ 21- Westbeld M/ 33- Ebo L/	3	01:25	3	00:17	01:08	0-2	-2	0	0	1	0	0.0000
1- Mabrey D/ 4- Prosper C/ 5- Miles O/ 22- Watson K/ 33- Ebo L/	3	00:17	4	10:00	00:17	0-2	-2	0	0	1	0	0.0000
1- Mabrey D/ 4- Prosper C/ 11- Citron S/ 22- Watson K/ 33- Ebo L/	4	10:00	4	08:18	01:42	5-2	3	2	0	0	1	1.6667
1- Mabrey D/ 4- Prosper C/ 11- Citron S/ 14- Bransford K/ 33- Ebo L/	4	08:18	4	06:07	02:11	6-3	3	4	0	1	3	1.0000
4- Prosper C/ 5- Miles O/ 11- Citron S/ 14- Bransford K/ 21- Westbeld M/	4	06:07	4	03:22	02:45	8-2	6	4	1	0	0	2.0000
0- Brown J/ 4- Prosper C/ 14- Bransford K/ 15- Marshall N/ 25- Cernugel S/	4	03:22	4	00:00	03:22	5-6	-1	4	0	2	1	1.0504



Boston College

Lineup	Time	Score	Score Diff	Pts/Min	Reb	Stl	Tov	Ass	PPP
4- Lacey J/ 5- Gakdeng M/ 20- Mair T/ 21- Daley A/ 24- Waggoner D/	08:03	8-18	-10	0.9938	7	1	5	3	0.5000
4- Lacey J/ 5- Gakdeng M/ 12- VanTimmeren A/ 20- Mair T/ 24- Waggoner D/	05:11	4-8	-4	0.7717	6	1	3	1	0.3636
5- Gakdeng M/ 12- VanTimmeren A/ 20- Mair T/ 21- Daley A/ 24- Waggoner D/	04:50	5-13	-8	1.0345	0	2	0	1	0.5123
3- McGee A/ 5- Gakdeng M/ 12- VanTimmeren A/ 20- Mair T/ 21- Daley A/	03:55	10-3	7	2.5532	3	0	0	0	2.0492
4- Lacey J/ 5- Gakdeng M/ 14- Lezama K/ 20- Mair T/ 24- Waggoner D/	02:31	2-9	-7	0.7947	1	1	2	0	0.4000
4- Lacey J/ 12- VanTimmeren A/ 20- Mair T/ 21- Daley A/ 24- Waggoner D/	02:11	2-7	-5	0.9160	1	0	2	0	0.4000
4- Lacey J/ 5- Gakdeng M/ 12- VanTimmeren A/ 14- Lezama K/ 24- Waggoner D/	01:55	1-2	-1	0.5217	1	2	1	0	0.3472
3- McGee A/ 4- Lacey J/ 12- VanTimmeren A/ 21- Daley A/ 24- Waggoner D/	01:34	4-1	3	2.5532	1	1	1	1	1.3333
12- VanTimmeren A/ 14- Lezama K/ 20- Mair T/ 21- Daley A/ 24- Waggoner D/	01:33	2-4	-2	1.2903	1	0	0	0	0.6667
3- McGee A/ 12- VanTimmeren A/ 20- Mair T/ 21- Daley A/ 24- Waggoner D/	01:14	1-0	1	0.8108	3	0	1	0	0.2660
4- Lacey J/ 5- Gakdeng M/ 14- Lezama K/ 21- Daley A/ 24- Waggoner D/	01:12	0-4	-4	0.0000	2	0	1	0	0.0000
3- McGee A/ 5- Gakdeng M/ 20- Mair T/ 21- Daley A/ 24- Waggoner D/	01:03	2-6	-4	1.9048	0	0	0	0	1.0000
3- McGee A/ 4- Lacey J/ 12- VanTimmeren A/ 14- Lezama K/ 21- Daley A/	00:55	0-2	-2	0.0000	0	0	0	0	0.0000
3- McGee A/ 4- Lacey J/ 14- Lezama K/ 21- Daley A/ 43- Carman A/	00:53	2-2	0	2.2642	0	0	0	0	2.0000
5- Gakdeng M/ 12- VanTimmeren A/ 14- Lezama K/ 21- Daley A/ 24- Waggoner D/	00:44	2-0	2	2.7273	1	0	0	0	2.0000
3- McGee A/ 4- Lacey J/ 5- Gakdeng M/ 20- Mair T/ 21- Daley A/	00:41	2-2	0	2.9268	0	0	0	0	2.0000
3- McGee A/ 4- Lacey J/ 5- Gakdeng M/ 12- VanTimmeren A/ 24- Waggoner D/	00:37	0-3	-3	0.0000	0	0	1	0	0.0000
4- Lacey J/ 12- VanTimmeren A/ 14- Lezama K/ 20- Mair T/ 24- Waggoner D/	00:33	0-0	0	0.0000	0	0	1	0	0.0000
3- McGee A/ 5- Gakdeng M/ 12- VanTimmeren A/ 14- Lezama K/ 24- Waggoner D/	00:19	1-0	1	3.1579	0	0	0	0	1.1364
4- Lacey J/ 5- Gakdeng M/ 12- VanTimmeren A/ 20- Mair T/ 21- Daley A/	00:04	0-0	0	0.0000	0	0	0	0	0.0000
3- McGee A/ 5- Gakdeng M/ 12- VanTimmeren A/ 21- Daley A/ 24- Waggoner D/	00:02	0-1	-1	0.0000	1	0	0	0	0.0000



Officials: Carla Fountain, Rod Creech, Brandon Enterline

Notre Dame

Lineup	Time	Score	Score Diff	Pts/Min	Reb	Stl	Tov	Ass	PPP
1- Mabrey D/ 5- Miles O/ 11- Citron S/ 21- Westbeld M/ 22- Watson K/	05:07	9-4	5	1.7590	4	4	2	3	0.8272
4- Prosper C/ 5- Miles O/ 11- Citron S/ 21- Westbeld M/ 33- Ebo L/	03:52	9-2	7	2.3276	8	2	4	3	1.1250
5- Miles O/ 11- Citron S/ 14- Bransford K/ 21- Westbeld M/ 33- Ebo L/	03:39	10-6	4	2.7397	2	2	1	2	1.3661
0- Brown J/ 4- Prosper C/ 14- Bransford K/ 15- Marshall N/ 25- Cernugel S/	03:22	5-6	-1	1.4851	4	0	2	1	1.0504
0- Brown J/ 1- Mabrey D/ 14- Bransford K/ 15- Marshall N/ 22- Watson K/	03:08	2-3	-1	0.6383	4	1	3	1	0.3333
4- Prosper C/ 5- Miles O/ 11- Citron S/ 14- Bransford K/ 21- Westbeld M/	02:45	8-2	6	2.9091	4	1	0	0	2.0000
1- Mabrey D/ 5- Miles O/ 11- Citron S/ 21- Westbeld M/ 33- Ebo L/	02:41	7-3	4	2.6087	2	1	0	1	1.4344
1- Mabrey D/ 4- Prosper C/ 11- Citron S/ 14- Bransford K/ 33- Ebo L/	02:11	6-3	3	2.7481	4	0	1	3	1.0000
1- Mabrey D/ 11- Citron S/ 14- Bransford K/ 22- Watson K/ 33- Ebo L/	02:06	0-2	-2	0.0000	2	2	2	0	0.0000
1- Mabrey D/ 4- Prosper C/ 11- Citron S/ 22- Watson K/ 33- Ebo L/	01:42	5-2	3	2.9412	2	0	0	1	1.6667
1- Mabrey D/ 5- Miles O/ 14- Bransford K/ 21- Westbeld M/ 22- Watson K/	01:30	7-0	7	4.6667	2	0	0	2	2.1084
0- Brown J/ 5- Miles O/ 11- Citron S/ 15- Marshall N/ 33- Ebo L/	01:23	4-2	2	2.8916	3	1	0	0	1.4493
1- Mabrey D/ 4- Prosper C/ 5- Miles O/ 21- Westbeld M/ 33- Ebo L/	01:08	0-2	-2	0.0000	0	0	1	0	0.0000
5- Miles O/ 11- Citron S/ 14- Bransford K/ 21- Westbeld M/ 22- Watson K/	01:04	2-2	0	1.8750	2	0	0	0	1.0638
1- Mabrey D/ 4- Prosper C/ 5- Miles O/ 15- Marshall N/ 22- Watson K/	01:04	7-0	7	6.5625	1	1	0	1	2.1875
5- Miles O/ 11- Citron S/ 14- Bransford K/ 22- Watson K/ 33- Ebo L/	00:58	2-2	0	2.0690	1	0	0	1	2.0000
1- Mabrey D/ 5- Miles O/ 14- Bransford K/ 21- Westbeld M/ 33- Ebo L/	00:49	0-2	-2	0.0000	0	0	0	0	0.0000
1- Mabrey D/ 5- Miles O/ 14- Bransford K/ 22- Watson K/ 33- Ebo L/	00:41	0-2	-2	0.0000	1	0	2	0	0.0000
0- Brown J/ 5- Miles O/ 14- Bransford K/ 15- Marshall N/ 33- Ebo L/	00:19	0-1	-1	0.0000	0	0	0	0	0.0000
1- Mabrey D/ 4- Prosper C/ 5- Miles O/ 22- Watson K/ 33- Ebo L/	00:17	0-2	-2	0.0000	0	0	1	0	0.0000
4- Prosper C/ 5- Miles O/ 11- Citron S/ 15- Marshall N/ 22- Watson K/	00:14	2-0	2	8.5714	0	0	0	1	2.0000