

2023-24 SCHEDULE/RESULTS

Date	Opponent	Time/Result
NOVEMBER		
Mon. 6	at Cincinnati (ESPN+)	W, 77-59
Sun. 12	DePaul (ACCN)	W, 81-74
Thurs. 16	Bellarmine (ACCNX)	W, 111-33
Sun. 19	Bucknell (ACCN)	W, 77-44
Fri. 24	vs. Alabama [^] (ESPN+)	L, 73-78
Sat. 25	vs. Liberty [^] (ESPN+)	W, 72-63
Sun. 26	vs. #16/15 Gonzaga [^] (ESPN+)	W, 81-70
Wed. 29	at #19/20 Ole Miss (ESPNU)	W, 64-58
DECEMBER		
Sun. 3	NC A&T (ACCNX)	W, 80-40
Sun. 10	Kentucky (ACCN)	W, 73-61
Wed. 13	Morehead State (ACCNX)	W, 74-48
Sat. 16	at #17/18 UConn (FOX)	L, 62-86
Wed. 20	#23 Washington (ACCN)	W, 59-51
Sun. 31	at RV/#23 Miami* (ACCN)	W, 77-72
JANUARY		
Thur. 4	Duke* (ACCN)	W, 61-44
Thur. 11	at Pitt* (ACCN)	W, 74-44
Sun. 14	Wake Forest* (ACCN)	W, 83-62
Thur. 18	at Clemson* (ACCNX)	W, 81-64
Sun. 21	at #23/24 North Carolina* (ACCN)	L, 68-79
Thur. 25	Boston College* (ACCNX)	W, 88-60
Sun. 28	Pitt* (ACCNX)	W, 77-58
FEBRUARY		
Thur. 1	#21/23 Syracuse* (ACCNX)	W, 81-69
Mon. 5	at #3/5 NC State* (ESPN2)	L, 67-77
Thur. 8	#12/14 Notre Dame* (ESPN)	W, 73-66
Sun. 11	at #23 Syracuse* (CW)	L, 72-73
Thur. 15	at Boston College* (ACCNX)	W, 69-67
Sun. 18	#12/13 Virginia Tech* (ESPN)	L, 70-86
Thur. 22	at Georgia Tech* (ACCN)	W, 80-62
Sun. 25	Virginia* (CW)	L, 68-73
Thur. 29	RV Florida State* (ACCN)	W, 70-55
MARCH		
Sun. 3	at #17 Notre Dame* (ESPN)	2 p.m.
Wed-Sun. 6-10	vs. ACC Tournament (ACCN/ESPN)	TBA

Home games are in **bold** | All Times Eastern

* = ACC

[^] = Van Chancellor Classic (Katy, Texas)

QUICK FACTS

Location	Louisville, Ky.
Founded / Enrollment	1798 / 22,298
Nickname / Colors	Cardinals / Red and Black
Conference	Atlantic Coast
Home Court (Capacity)	KFC Yum! Center (22,090)
President	Dr. Kim Schatzel
Vice President for Athletics	Josh Heird
Senior Woman Administrator	Amy Calabrese
Head Coach	Jeff Walz (Northern Kentucky, '95)
Associate Head Coach	Stephanie Norman
Associate Coach	Jonneshia Pineda
Associate Coach	Shay Robinson
Director of Operations	Macey Ford
Assistant AD/Women's Basketball	Adrienne Johnson
Director of Video Analytics/Graphic Design	LaMont Russell
Director of Player Development and Alumni Relations	Cortnee Walton
All-Time Record	1,010-523 (49th yr.)
All-Time NCAA Tournament Record	44-25 (25 Appearances)
SID - Matt Paras	c: (401) 215-5656
	email: Paras@GoCards.com
Athletics Department	(502) 852-5732
Basketball Office	(502) 852-8355
Sports Information Office	(502) 852-6581

LOUISVILLE

2023-24 WOMEN'S BASKETBALL



No. 22/23 Louisville Cardinals vs. No. 17 Notre Dame Fighting Irish

Game 31 • Sunday, March 3 • 2 p.m. ET • ESPN • 93.9-FM The Ville • South Bend, Ind. • Purcell Pavilion

LOUISVILLE

Record: 23-7, 12-5 ACC
 NET: 23 SOS: 40
 Last Game: W, 70-55 vs. Florida State
 Current Streak: W1
 Scoring Margin: +12.3
 Head Coach: Jeff Walz
 Record at UL: 464-132 (17th year)
 International Record: 19-1 (.950)
 Career Record: 483-133 (.784)
 Leading Scorer: Kiki Jefferson (13.2)
 Leading Rebounder: Cochran, Harris (6.5)
 Assists Leader: Nina Rickards (2.6)
 Blocks Leader: Olivia Cochran (0.5)
 Steals Leader: Olivia Cochran (1.4)

NOTRE DAME

Record: 22-6, 12-5 ACC
 NET: 10 SOS: 64
 Last Game: W, 71-58 vs. #5 Virginia Tech
 Current Streak: W4
 Scoring Margin: +19.0
 Head Coach: Niele Ivey
 Record at ND: 83-31 (Fourth year)
 Career Record: same
 Leading Scorer: Hannah Hidalgo (23.7)
 Leading Rebounder: Maddy Westbeld (9.3)
 Assists Leader: Hannah Hidalgo (5.5)
 Blocks Leader: Kylee Watson (1.5)
 Steals Leader: Hanna Hidalgo (4.8)

STARTING FIVE

■ The post duo of Olivia Cochran and Nyla Harris went to work in the home win over Florida State on Feb. 29. Nyla Harris scored 11 points and set a career high with 15 rebounds for her team-leading sixth double-double of the season. The 15 rebounds were the most by a Louisville player in a game this season and the most since CC Carr had 17 against DePaul on Dec. 21, 2022. Olivia Cochran led the team with 16 points and had 11 rebounds for her fourth double-double of the season. It is the first time since 2019 against Kentucky that Louisville had two players record a double-double in the same game. Louisville owned the glass against the Seminoles and outrebounded them 57-32. The 57 rebounds set a record for most rebounds all-time in an ACC game for the Cardinals.

■ Since Louisville joined the ACC in the 2014-15 season, the Cardinals have been the most successful team in conference play. Over the last 10 seasons, the Cardinals are 138-29 (.826) in ACC play. The Cardinals are the only team to have a winning percentage at .800 or higher and have seven more wins than the school with the second-highest win total during that span. Louisville is also the only ACC team to have 10 or more conference wins in each of the last 10 seasons.

■ The Cardinals have been able to bounce back quickly following a loss during Jeff Walz's tenure as head coach. In his 17 years, the Cardinals are 92-24 all-time following a loss after the win over Florida State on Feb. 29. The Cardinals are even better following a loss in ACC play. Louisville is 26-3 following a loss against ACC opponents and have only lost two-straight games in ACC play three times over the past 10 seasons. So far this season, Louisville is 7-0 following a loss.

■ Head coach Jeff Walz is among a select few coaches in all of college basketball to reach four or more Final Fours. In women's basketball, he is one of five active head coaches and one of eleven all-time to reach four or more Final Fours. Of those 11, he is one of nine to have all of his appearances at the same school. Combining men's college basketball, Walz is one nine active head coaches and one of 33 all-time to reach four or more Final Fours.

■ Louisville's squad has scored a total of 9,631 career points in their Division I career, the highest amount of career points on any active roster in the ACC. The Cardinals have five players on their team with 1,000 or more career points (Jayda Curry, 1,160; Olivia Cochran, 1,216; Nina Rickards, 1,252; Sydney Taylor, 1,789) and Kiki Jefferson has eclipsed 2,000 points for her career (2,233).

Sports Information Office // University of Louisville // Louisville, KY 40292 // GoCards.com
 Phone: (502) 852-3085 // Fax: (502) 852-7401 // email: Paras@GoCards.com // Twitter: @LouisvilleWBB

PROJECTED STARTERS (Based off last game)

15		1		12		44		2											
Nina RICKARDS		Sydney TAYLOR		Kiki JEFFERSON		Olivia COCHRAN		Nyla HARRIS											
PPG	RPG	APG	MPG	PPG	RPG	APG	MPG	PPG	RPG	APG	MPG								
7.0	3.6	2.6	23.1	10.9	2.8	2.1	24.5	13.2	4.5	2.5	25.0	10.8	6.5	1.4	27.0	10.6	6.5	0.7	26.7

2023-24 Louisville Cardinals

Projected Starters (Based off last game)

No.	Name	Pos.	Ht.	Yr.	Hometown	PPG	RPG	APG	Notes
15	Nina Rickards	G	5-9	Gr.	Queens, N.Y.	7.0	3.6	2.6	Scored a season-best 16 points at Boston College
1	Sydney Taylor	G	5-9	Gr.	Long Island, N.Y.	10.9	2.8	2.1	Tallied 31 points and tied a career high with 7 3's against GT
12	Kiki Jefferson	G	6-1	Gr.	Lancaster, Pa.	13.2	4.5	2.5	Tallied double-double (10 pts, 10 rebs) against UVA
44	Olivia Cochran	F	6-3	Sr.	Columbus, Ga.	10.8	6.5	1.4	Tallied her fourth double-double (16 pts, 11 rebs) vs. FSU
2	Nyla Harris	F	6-2	So.	Orlando, Fla.	10.6	6.5	0.7	Team leading sixth double-double (11 pts., 15 rebs.) vs. FSU

Reserves

3	Hennie van Schaik	F	6-3	Jr.	Urk, Netherlands	1.6	0.9	0.1	Scored season-best seven points against Bucknell
10	Eseosa Imafidon	C	6-5	R-So.	Benin-City, Nigeria	-	-	-	Is redshirting this season
11	Elif Istanbuluoglu	F	6-3	Fr.	Istanbul, Turkey	2.6	2.3	0.4	Scored a career-high 11 points against Boston College
13	Merissah Russell	G	6-0	Sr.	Ottawa, Canada	4.9	2.4	1.0	Scored 11-straight points and made three-straight threes against Miami
23	Alexia Mobley	F	6-2	Jr.	Reynoldsburg, Ohio	1.8	1.9	0.3	Scored career-best 12 points against Bellarmine
24	Eylia Love	G	6-1	Sr.	Kansas City, Kan.	4.0	2.8	0.9	Tied a career high with five assists against Pitt
30	Jayda Curry	G	5-6	Jr.	Corona, Calif.	8.9	1.6	2.0	Has scored a season-best 19 points twice this season (Miami, Clemson)

Pronunciation Guide:

Hennie (Hen-EE) van Schaik (von Shy-ke), Eseosa (e-SOW-sah) Imafidon (ee-MAH-fee-dawn), Elif (Ay-lif) Istanbuluoglu (ee-stahn-BOO-low-loo), Rickards (ri-CARDS), Mobley (MOW-blee), Eylia (uh-LEE-uh), Walz (Walls), Jonneshia Pineda (JO-nee-SHA PIN-ay-duh)

ABOUT THE FIGHTING IRISH

Notre Dame comes into Sunday's matchup with a 22-6 record and are 12-5 in conference play. The Fighting Irish are currently ranked No. 17 in both the AP and Coaches poll and are coming off a 71-58 home win over No. 5 Virginia Tech this past Thursday. The Irish have won four games in a row and five of their last six games coming into the final weekend of the regular season. Sunday's matchup will pair two of the best shooting teams in the ACC and in the country. Louisville ranks second in the ACC and 25th nationally with a 45.9 field goal percentage. Notre Dame is third in the ACC and 27th nationally with a 45.7 field goal percentage. The Irish have some of the best marks in the conference in several categories. They lead the league and rank 10th nationally in scoring margin with +19.0. The Irish also lead the league and are eighth nationally in steals per game with 11.6. Notre Dame also is tops in the league and 34th nationally in three-point percentage defense as they hold opponents to 27.7 percent from behind the arc. Freshman guard Hannah Hidalgo leads the nation with 4.8 steals per game and 135 steals on the season. She is third nationally in points (663) and points per game (23.7).

■ **Series History** - This will be the 33rd meeting between the two schools as they have been conference foes going back to the BIG EAST days. The Cardinals trail the all-time series 14-18 but have seen more success over the past few years. Louisville has won eight of the last 10 matchups dating back to the 2018-19 season. The Cardinals trail the series 5-7 in games played in South Bend but have won three of the last four home matchups up there dating back to the 2019-20 season.

■ **Last Meeting (Feb. 8, 2024)** - The No. 15 Louisville women's basketball team (20-4, 9-2 ACC) never trailed in their 73-66 victory over No. 12/14 Notre Dame (17-5, 7-4 ACC) Thursday night inside the KFC Yum! Center, moving to 13-0 at home this season and notching the 14th-straight season that the Cards have won at least 20 games. Louisville managed to hold the Irish to 66 points, just the third time Notre Dame has been held under the 70-point mark and the first time the Irish never led in a game this year. Nyla Harris led the way with a career-high 19 points and 10 rebounds, making nine of her 11 shots from the field and recording her team-leading fourth double-double this season. Sydney Taylor totaled 13 points, four assists, and two rebounds, and Kiki Jefferson rounded out the double-digit scorers with 12 points on top of eight rebounds, four assists, and a 6-for-6 night from the charity stripe. Nina Rickards played a crucial role on the glass, pulling down nine rebounds while tallying six points.

APPROACHING MILESTONES

■ **Jefferson approaches 1,000 career rebounds** - Kiki Jefferson currently has 951 career rebounds and is 49 shy of 1,000.

QUICK HITTERS

■ **Strong ACC Shooting** - So far in conference play this season, Louisville has been the best shooting team in the ACC. In ACC games, the Cardinals lead the conference with a 46.8 field goal percentage and the second-best team in the league (Virginia Tech) is shooting 45.2 percent from the field. The Cardinals have shot 50 percent or better in seven of their ACC games this season.

■ **Threes Company** - Louisville has also been successful from behind the arc in ACC play this season. They lead the league in conference play with a 35.4 three-point field goal percentage. Two of Louisville's best shooting games of the season

GAMEDAY INFO

Date: Sunday, March 3

Time: 2 p.m. ET

Site: South Bend, Ind. | Purcell Pavilion (9,149)

TV: ESPN (Pam Ward, play-by-play; Kelly Gramlich, analyst)

Radio: 93.9-FM The Ville (Nick Curran, play-by-play; Cortnee Walton, analyst)

Series History: Louisville trails 14-18 (home 6-6, away 5-7 neutral 3-5)

Last Meeting: W, 73-66 (Feb. 8, 2024 at KFC Yum! Center)

UofL National Ranking: 22nd Associated Press, 23rd USA Today

Team Statistics	Cards (23-7)	ND (22-6)
Points per game	74.8	80.2
Scoring margin	+12.3	+19.0
Field goal percentage	.459	.457
3-Point FG-attempts	145-443	155-463
3-Point FG percentage	.327	.335
3-Point FG made per game	4.8	5.5
Free throws-attempts	456-606	401-524
Free throw percentage	.752	.765
FTs made per game	15.2	14.3
Rebounds per game	37.4	41.8
Rebounding margin	+6.4	+6.6
Assists per game	13.7	16.5
Turnovers per game	15.2	14.8
Turnover margin	+3.4	+4.7
Assist/turnover ratio	0.9	1.1
Steals per game	8.5	11.6
Blocks per game	1.6	4.8

from three came in conference play when they were 7-for-11 (63.6 percent) from three against Wake Forest and 12-for-22 (54.5 percent) from three against Georgia Tech.

■ **Stopping the League's Best** - Louisville put on a defensive display against the league's top scoring offense in Florida State on Feb. 29. The Cardinals limited the Seminoles to just 55 points in the win, the second-fewest points the Noles have scored in a game this season. Heading into the game, Florida State averaged a league-best 81.0 points per game.

ANOTHER 20-WIN SEASON

UofL defeated #12/14 Notre Dame 73-66 on Feb. 8 to reach 20 wins for the 14th-straight season and extended the program record. The 14-straight seasons with 20 or more wins is the fifth-longest active streak in the country. The longest run previously was three, achieved twice. The Cards have won at least 20 games in 16 of Walz's 17 seasons. Prior to Walz's arrival, Louisville had just 10 20-win seasons in its history.

YEAR 4 FOR OC

Olivia Cochran is set for a big role with the Cardinals in her fourth year with the team. She is the most experienced Cardinal returning from the 2022-23 squad.

- Cochran leads the team in rebounds (6.5), steals (1.4) and blocks (0.5) per game and is third on the team in scoring (10.8).
- Cochran has tallied 19 double-digit scoring games this season and has been an efficient shooter from the field. She is third on the team with a .500 field goal shooting percentage and has shot 50 percent or better from the floor in 19 games this year.
- In the win over Florida State, she led the team with 16 points and hauled in 11 rebounds for her fourth double-double of the season.
- She recorded a team-best 12 rebounds to go with eight points against Georgia Tech. It was her fifth game this season with 10 or more rebounds.
- Cochran had 11 points and a team-best nine rebounds against Boston College.
- She led the team with 17 points and a season-high 12 rebounds against No. 3/5 NC State.
- Cochran hit double figures for the 12th-straight game with 10 points on 5-for-10 shooting and had a team-best seven rebounds in the win over Boston College. It was also the 12th-straight game she has shot 50 percent or better from the floor.
- She scored 14 points on 6-for-9 shooting, team-best five rebounds and tied a season-best with four assists against #23/24 North Carolina.
- Cochran tallied a team-best 12 points to go with a season-best four assists and three rebounds in the win over Wake Forest.
- In the win over Duke on Jan. 4, she scored double-digit points (13) and had a team-best six rebounds and three steals.
- Cochran scored in double figures with 11 points, seven rebounds, two steals and two blocks in the road win over #RV/23 Miami.
- She led the Cards with 14 points and had seven rebounds in the win over #23 Washington.
- Cochran tallied her second double-double of the season with a team-best 16 points and tied a season high with 11 rebounds against Morehead State.
- She surpassed the 1,000-point mark for her career with 10 points in the home win over Kentucky while adding a team-best eight rebounds and three assists. She is the 33rd player in program history to score 1,000 points or more in their Louisville careers.
- Cochran tied her career high with 21 points and added 11 rebounds against Liberty for her 10th career double-double and the first of the season. She tied a career high when she made nine free throws against the Flames and tied a season high with three steals.
- She was named to the Wooden Award Preseason Top 50 Watch List prior to the matchup with Bellarmine. The Cardinals have had at least one player on the Wooden Watch List in seven of the last eight seasons.
- Cochran tallied a career-high 21 points and led the team with three assists, three steals and added five rebounds in the win over DePaul.
- Ahead of the 2023-24 season, Cochran was named to the Naismith Women's Player of the Year Watch List, Katrina McClain Award Watch List and Preseason All-ACC team.
- She led the Cardinals with 6.5 rebounds per game last season and had one of her best career games in the Elite Eight against the national runners-up. Cochran had a career-high 20 points and added 14 points against Iowa. The 14 rebounds were tied for fifth-most in an NCAA Tournament game in program history.
- She was the only player to play and start all 38 games last season and led the team with four double-doubles.

HOW ABOUT HARRIS

Sophomore Nyla Harris has made a big jump in her second season with the Cardinals.

- Harris currently leads the team in field goal percentage (.588), double-doubles (6), tied for the team lead in rebounds per game (6.5) and is one of four players to average over 10 points per game (10.6).
- She has elevated her game during conference play this season, especially when facing Top-25 opponents. In conference games against ranked opponents (7 games),

HEAD COACH JEFF WALZ



Head coach **Jeff Walz**, in his 17th season as a head coach, has compiled a 464-132 record as the Cardinals' leader. Walz and the Cardinals boast quite an astounding resumé that includes 12 trips to the NCAA Sweet 16, eight trips to the Elite Eight, four trips to the final four and two trips to the national title game. Overall, he has compiled a 40-14 record in NCAA Tournament games and ranks eighth all-time and fifth among active coaches with a 74.1 NCAA Tournament winning percentage. All of this for a program that had just four NCAA Tournament wins and had never reached a Sweet 16 prior to Walz being named head coach.

Walz is the all-time winningest coach in program history and averages 27.6 victories per season. He directed Louisville to a program-record 36 victories in 2017-18 en route to being named ACC Coach of the Year, 34 victories in 2008-09, 33 wins in 2013-14, 32 wins in 2018-19 and 29 wins in 2021-22.

The Cardinals have reached 20 wins 14 consecutive times and they have won at least 20 games in 16 of Walz's 17 seasons. The longest run previously was three, achieved twice, and UofL had just 10 20-win seasons in its 32 previous years.

Walz led Louisville to four consecutive Atlantic Coast Conference regular season titles in 2018, 2019, 2020 and 2021, and over that four-year span, the Cardinals went a combined 122-15, which marked the fewest losses and best winning percentage over a four-year period in program history.

From 2016-2021, he coached the ACC Player of the Year in five of six seasons as Myisha Hines-Allen won the award in 2016, Asia Durr in 2018 and 2019, and Dana Evans in 2020 and 2021. He also coached Angel McCoughtry to Big East Player of the Year honors in 2007.

After being hired as the Cardinals' head coach on March 27, 2007, the Bluegrass State native used little time to make a splash. His first year featured the program's first NCAA Sweet 16 and it culminated with Louisville earning the No. 12 ranking in the final ESPN/USA Today Coaches Poll. For his efforts, Walz was named the WBCA Maggie Dixon Rookie Coach of the Year.

Prior to taking the reins at Louisville, Walz spent five seasons at Maryland, including his final season as the associate head coach in 2006-07. The season prior, he helped lead the Terrapins to a school-record 34 wins and the program's first national title.

Walz has four children: daughter Kaeley, son Jacob, and daughters Lola and Lucy. He married the former Lauren Lueders in September of 2012, and the couple resides in Louisville.

No.	Date	Score
1	11/10/07	Louisville 81, Ball State 62
50	2/17/09	Louisville 89, St. John's 60
100	11/22/11	Louisville 78, Austin Peay 60
150	11/11/13	Louisville 100, Quinnipiac 82
200	1/29/15	Louisville 78, Syracuse 58
250	1/15/17	Louisville 63, Miami 59
300	11/6/18	Louisville 102, WKU 80
350	1/23/20	Louisville 71, Virginia 56
400	1/16/22	Louisville 63, Boston College 53
450	12/10/23	Louisville 73, Kentucky 61

Before Walz 1975-2007 (32 seasons)	With Walz 2007-pres (17th season)
Overall Record 547-391 (.583)	College Record 464-132 (.779)
NCAAT Record 4-11 (.267)	NCAAT Record 40-14 (.741)
Sweet 16 App. 0	Sweet 16 App. 12
Elite Eight App. 0	Elite Eight App. 8
Final Four App. 0	Final Four App. 4
NCAA Finalist 0	NCAA Finalist 2

Harris is averaging a team-best 15.3 points per game, 8.6 rebounds per game and .645 field goal percentage (40-for-62).

■ Against all conference opponents, Harris leads the team with 7.5 rebounds per game, .589 field goal percentage and is second on the team with 11.4 points per game. Five of her team-leading six double-doubles have come against conference foes.

■ Harris set a career high with 15 rebounds and scored 11 points for her sixth double-double of the season in the home win over Florida State. The 15 rebounds were the most by a Louisville player in a game this season.

■ She led the team with 17 points, tallied nine rebounds and tied a career-high with two assists against Virginia.

■ Harris set her career high in points for the second-straight game with 22 points and hauled in 11 rebounds for her second-straight double-double against #23 Syracuse.

■ She scored a career high 19 points on 9-for-11 shooting and tallied 10 rebounds for a double-double in the home win over #12/14 Notre Dame.

■ Harris set a career high with 14 rebounds and tied a career high with 18 points for a double-double in the home win over #21/23 Syracuse. The 14 rebounds were the most by a Louisville player this season.

■ On the road against #23/24 North Carolina, Harris scored 16 points and shot 7-for-11 from the field.

■ Harris recorded a double-double with 13 points and 12 rebounds in the road win over RV/#23 Miami to snap the Hurricanes 17-game winning streak.

KEEPING UP WITH THE JEFFERSON

Graduate transfer guard Kiki Jefferson has been one of the most consistent scoring threats for the Cardinals this season.

■ She leads the team with 13.2 points per game, is second on the team with 2.5 assists per game, has scored double figures a team-best 23 times and has eight or more points scored in 28 of 30 games this season.

■ Jefferson has been an efficient scorer this season and has shot 50 percent or better from the floor in 17 games this year.

■ She is one of the best free throws in the country and is shooting 89.4 percent (110-for-123) from the line this season. That mark leads the ACC and ranks 12th nationally.

■ Scored in double figures with 12 points, had seven rebounds and led the team with three assists in the home win over Florida State.

■ Tallied her first double-double of the season with 10 points and 10 rebounds against Virginia.

■ Jefferson had a team-best 19 points on 7-for-12 shooting against No. 12/13 Virginia Tech.

■ She was 6-for-6 from the free throw line for the third-straight game and had 13 points on the road against No. 23 Syracuse.

■ Jefferson tallied 12 points and was 6-for-6 from the line, tied a season high with eight rebounds and had a team-best four assists against No. 12/14 Notre Dame.

■ She scored 16 points and brought in six rebounds against No. 3/5 NC State.

■ Jefferson eclipsed the 20-point mark for the fourth time this season with 21 points on 6-for-12 shooting and 9-for-11 from the line in the win over #21/23 Syracuse.

■ She tallied her best scoring performance of the season with a season-best 27 points on 8-for-14 shooting, 2-for-2 from behind the arc and a season-best 9-for-11 from the line in the win over Boston College. Jefferson also added a team-best seven rebounds and four assists. The 27 points were the most by a Louisville player this season.

■ Prior to the Boston College game, Jefferson was named to the Cheryl Miller Award Top 10 List.

■ Jefferson recorded 17 points on 6-for-9 shooting and tallied a season-best eight assists in the road win over Clemson. It was the 12th time in her last 13 games with 10 points or more.

■ She was one of six Cardinals to score in double figures with 10 points against Wake Forest.

■ She eclipsed the 2,000-career point mark in the road win over Miami on Dec. 31 with 12 points on 4-for-8 shooting.

■ Scored a team-best 19 points, tied a season high with five assists and three steals and hit a season-best eight field goals on the road against #17/18 UConn.

■ Jefferson tallied a season-high 21 points on 7-for-10 shooting and 6-for-6 from the line in the win that clinched the Betty Chancellor Classic over Gonzaga on Nov. 26. She was named to the Chancellor Classic All-Tournament Team following the win over Gonzaga.

■ Eclipsed the 20-point mark for the first time this season with a team-high 20 points and was 8-for-8 from the line in the win over Liberty on Nov. 25.

NO STOPPING NINA

Graduate transfer guard Nina Rickards has played well for the Cardinals this season, impacting the game in a number of categories.

■ Rickards leads the team in assists per game (2.6), second in steals per game (1.2) and field goal percentage (.522), fourth in rebounds per game (3.6) and is one of six players to average at least seven points per game (7.0).

■ She has tallied two or more assists in 23 games and scored six or more points in 20 games this season. She has led the team in assists in 14 games this year and has had a season-high five assists three separate times.

■ Rickards led the team with 16 points on 7-for-10 shooting and had three rebounds,

2023-24 NATIONAL RANKINGS

Associated Press (Week 17)			USA Today (Week 17)		
1	South Carolina (35)	27-0	1	South Carolina (32)	27-0
2	Ohio State	24-3	2	Ohio State	24-3
3	Texas	26-3	3	Texas	26-3
4	Stanford	24-4	4	Virginia Tech	23-4
5	Virginia Tech	23-4	5	Stanford	24-4
6	Iowa	24-4	6	Iowa	24-4
7	Southern Cal	21-5	7	LSU	24-4
8	UCLA	21-5	8	UCLA	22-5
9	LSU	24-4	9	Southern Cal	21-5
10	UConn	24-5	10	UConn	24-5
11	Oregon State	22-5	11	NC State	23-5
12	NC State	23-5	12	Indiana	22-4
13	Colorado	20-6	13	Gonzaga	28-2
14	Indiana	22-4	14	Kansas State	23-5
15	Kansas State	23-5	15	Colorado	20-7
16	Gonzaga	28-2	16	Oregon State	22-5
17	Notre Dame	21-6	17	Notre Dame	21-6
18	Utah	20-8	18	Utah	20-8
19	Syracuse	23-5	19	Syracuse	23-5
20	Oklahoma	20-7	20	Creighton	22-4
21	Baylor	21-6	21	Baylor	21-6
22	Louisville	22-7	22	Oklahoma	20-7
23	Creighton	22-4	23	Louisville	22-7
24	UNLV	24-2	24	UNLV	24-2
	West Virginia	22-5	25	West Virginia	22-5

Others receiving votes: Fairfield 49, Duke 33, Princeton 7, North Carolina 5, Florida State 3, Columbia 2, Ole Miss 1

Others receiving votes: Princeton 22; Fairfield 14; Duke 14; Saint Joseph's 8; Ball State 5; Michigan State 2; Tennessee 1; Richmond 1; Kansas 1

Louisville in the Polls

Date	AP	USAT
Preseason	17	15
Nov. 13	19	15
Nov. 20	20	15
Nov. 27	22	19
Dec. 4	18	18
Dec. 11	18	17
Dec. 18	19	19
Dec. 25	19	19
Jan. 1	17	16
Jan. 8	15	15
Jan. 15	13	12
Jan. 22	18	16
Jan. 29	16	12
Feb. 5	15	15
Feb. 12	18	18
Feb. 19	20	20
Feb. 26	22	23

two assists and steal against Boston College.

- She tallied double-digit points with 14 points on 6-for-9 shooting with four rebounds, three assists and two steals in the win over #21/23 Syracuse.

- Rickards tied a career high with five steals and added six points, four rebounds and a team-best two assists in the win over #23 Washington.

- She scored in double figures in her fourth-straight game with 15 points and a team-best three assists and three steals in the road win over #19/20 Ole Miss.

- At the Betty Chancellor Classic in Texas, she scored in double-figures in all three games, including a season-high 16 against Gonzaga with a season-best five assists. She also tallied her first double-double of the season with 12 points and 10 rebounds against Alabama.

- Rickards was one of two Cardinals (Kiki Jefferson) to be named to the Chancellor Classic All-Tournament team.

NEW YEAR'S EVE PARTY IN SOUTH BEACH FOR THE CARDS

Louisville closed the year out with a bang in its 77-72 road win over #RV/23 Miami in the ACC opener on New Year's Eve.

- The Cardinals snapped a 17-game home winning streak for the Hurricanes. Heading into the game, Miami had not lost a home game since Dec. 29, 2022.

- The 77 points scored by the Cardinals were the most points the Hurricanes had allowed all season. Heading into the contest, Miami led the ACC in scoring defense and allowed just 53.5 points per game.

- Kiki Jefferson and Jayda Curry both hit milestones in the win. Jefferson eclipsed the 2,000-point mark for her career and Curry eclipsed the 1,000-point mark for her career.

- Curry led the team with a season-high 19 points in the win. She scored 11 of her 19 points in the third quarter.

- Merissah Russell was perfect from the floor in the fourth quarter as she was 3-for-3 from behind the arc and scored 11-straight points as the Cardinals regained the lead for good. She scored a season-high 12 points in the win.

- Louisville improved to 10-0 in ACC openers with the road win over the Hurricanes.

LOUISVILLE COLLECTS SECOND TOURNAMENT TITLE THIS SEASON AT BETTY CHANCELLOR CLASSIC

The 2023-24 Louisville women's basketball team won their second tournament this season when they defeated Gonzaga to clinch the Betty Chancellor Tournament Championship on Nov. 26 in Katy, Texas.

- The Cardinals needed to defeat Gonzaga by eight points or more to win the tiebreaker for the tournament championship.

- Louisville led by three heading into the final quarter and hit each of their first nine shots of the quarter to grow the lead to the largest of the game at 17 points.

- The Cardinals closed the game out at the line and outscored Gonzaga 22-14 in the fourth to clinch the title with a 81-70 win.

- Louisville was 34-for-58 (58.6 percent) from the floor in the win over Gonzaga and hit a season-best seven three-pointers.

- Jefferson scored 20-plus points for the second-straight game with a season-best 21 and tied for the team lead with five assists. Nina Rickards scored in double figures for the third-straight game with a season-high 16 points and tied for the team lead with five assists. The pair were both named to the Betty Chancellor Classic All-Tournament Team.

- The Cardinals also defeated Liberty, 72-63, on Saturday en route to the tournament championship. The Cardinals outscored the Flames 26-11 in the fourth quarter to get the win.

- Olivia Cochran tallied a double-double (21 pts., 11 rebs.) and Kiki Jefferson scored 20 points and was 8-for-8 from the line in the win over the Flames.

- This is the second tournament championship for the Cardinals after they won the 2023 GLOBL JAM tournament in Toronto this past July.

CARDINALS HIT PROGRAM-BEST MARKS IN WIN OVER BELLARMINE

The Cardinals put together one of the best games of the Jeff Walz era and made some history in their 111-33 win over Bellarmine on Nov. 16.

- The Cardinals set a program record with eight players scoring in double figures (Taylor, 15; Harris, 14; Mobley, 12; Russell, 11; Jefferson, 11; Curry, 11; Cochran, 10 and Istanbuluoglu, 10).

- The 78-point margin of victory was the largest in a game during the Jeff Walz era and the second largest in program history.

- The 111 points scored were the third most in a game in program history.

- Louisville limited Bellarmine to nine points in the first half, the third-fewest points allowed in the first half in program history and the most in a game since 2020.

- The Cardinals tallied 62 points in the paint against Bellarmine. It is the most points in the paint since Dec. 4, 2020, when Louisville recorded 74 against DePaul.

- Freshman Elif Istanbuluoglu recorded a double-double with 10 points and 12



STANDINGS (Mar. 1)

TEAM	ACC	PCT.	OVERALL
1. Virginia Tech	14-3	.824	23-5
2. Syracuse	13-5	.722	23-6
3. NC State	12-5	.706	24-5
4. Louisville	12-5	.706	23-7
5. Notre Dame	12-5	.706	22-6
6. Duke	11-6	.647	19-9
7. Florida State	11-6	.647	20-9
8. North Carolina	10-7	.588	18-11
9. Miami	8-9	.471	18-10
10. Georgia Tech	6-11	.353	15-14
11. Virginia	6-11	.353	14-14
12. Clemson	5-12	.294	12-17
13. Boston College	4-13	.235	12-18
14. Wake Forest	2-15	.118	6-23
15. Pitt	2-15	.118	8-22

ACC RESULTS (Feb. 29)

#22 Louisville 70, RV Florida State 55

Clemson 68, Wake Forest 64

Miami 62, Pitt 44

#17 Notre Dame 71, #5 Virginia Tech 58

RV Duke 73, Virginia 54

#12 NC State 75, #19 Syracuse 71 (OT)

Boston College 78, RV North Carolina 74

ACC SCHEDULE (Mar. 3)

#22 Louisville vs. #17 Notre Dame 2 p.m. ESPN

Boston College vs. Pitt 12 p.m. ACCNX

Georgia Tech vs. Miami 2 p.m. ACCN

Wake Forest vs. #12 NC State 2 p.m. ACCNX

Clemson vs. RV Florida State 4 p.m. ACCN

RV Duke vs. RV North Carolina 4 p.m. ESPN

#5 Virginia Tech vs. Virginia 6 p.m. ACCN

rebounds. She is the first Louisville freshman to record a double-double since Olivia Cochran had 13 points and 15 rebounds against Northwestern in the second round of the 2021 NCAA Tournament.

CARDS AMONG ACC BEST IN NCAA TOURNAMENT

Since Louisville joined the ACC back in the 2014-15 season, they have been one of the most successful teams in the conference when it comes to winning and advancing in the NCAA Tournament.

- Over the last three tournaments (2021, 2022, 2023), Louisville leads the ACC with 10 total wins in the NCAA Tournament. The 10 wins are double the number of wins from the programs that are tied for second-most during that span (Virginia Tech, Miami - 5).

- In two of those three years (2021, 2022), the Cardinals were the farthest ACC team to advance in the bracket.

- In the past five tournaments (2018, 2019, 2021, 2022, 2023), Louisville has the most wins among ACC teams in the NCAA Tournament with 17. The Cardinals reached the Elite Eight or farther in all five tournaments.

- Overall since the 2014-15 season, Louisville is second in the conference in NCAA Tournament wins (22) and second in years they have been the last ACC team standing in the tournament (2).

IN RARE AIR

Jeff Walz is among a select few coaches in all of college basketball when it comes to making four or more Final Fours.

- In Women's Basketball, he is one of just five active head coaches and one of 11 all-time to make four or more Final Fours.

- Of those 11, Walz is one of nine to have all of his appearances come at the same school.

- Including Men's Basketball, Walz is one of nine active and one of 33 all-time to make four or more Final Fours.

- Of those 33, he is one of 25 to make all of his appearances at the same school.

LOUISVILLE PICKED FOURTH IN ACC PRESEASON POLL

Louisville was selected to finish fourth overall in the ACC Preseason Poll ahead of the 2023-24 season. Since the Cardinals joined the league in 2014-15, they have finished fourth or higher in the league in every season. The Cardinals are the only team in the ACC to finish fourth or higher in each of the last nine seasons.

2023-24 ACC Preseason Blue Ribbon Poll

- | | |
|----------------------|--------------------|
| 1. Virginia Tech | 9. Syracuse |
| 2. Notre Dame | 10. Virginia |
| 3. North Carolina | 11. Clemson |
| 4. Louisville | 12. Georgia Tech |
| 5. Florida State | 13. Boston College |
| 6. Miami | 14. Wake Forest |
| 7. Duke | 15. Pitt |
| 8. NC State | |

ALLOWING 59 POINTS OR LESS

The Cardinals have great success when allowing 59 points or less in a game over the past few seasons. Louisville has won 44-straight games when allowing 59 points or less in a game after the 70-55 win over Florida State on Feb. 29. The 44-straight wins dates back to the 2020-21 season. Over the past nine seasons, the Cardinals are 151-4 when allowing 59 points or less in a game.

ROAD WARRIORS

The Cardinals are 7-4 on the road this season. Last season, the Cardinals were 10-5 in true road games. Since the start of the 2017-18 season, the Cardinals are 69-16 in true road games. Louisville is fourth in the NCAA in road wins and fifth in winning percentage (.812) during that span. The 10 road wins last season were tied for the most in the ACC.

70-PLUS POINTS

The Cardinals are 101-7 in their last 107 games when they have scored 70 points or more, dating back to the 2018-19 season. UofL is 330-30 when surpassing the 70-point plateau under Walz.

ONE OF THE BEST IN THE COUNTRY

Louisville has been one of the best teams in the country since the start of the 2017-18 season. The Cardinals have totaled 200 wins and an .837 winning percentage. The wins rank fourth and the winning percentage ranks seventh in the NCAA during that span. Louisville is just one of four teams to win 200 games or more over the past six seasons.

50/50

The Cardinals shot 55.8 percent (29-52) from the floor in the road win over Georgia Tech, their ninth game shooting over 50 percent this season and they are 9-0 in those games. Overall, they boast a 152-3 record when shooting 50 percent or better from the field under Walz.

CAREER 20-POINT GAMES

Olivia Cochran (3)		
vs. Liberty	11/25/23	21
DePaul	11/12/23	21
vs. Iowa	3/26/23	20
Jayda Curry (16) *at Cal		
at Colorado*	2/25/23	26
at Utah*	2/23/23	28
Southern Cal*	2/19/23	27
at Arizona State*	2/10/23	21
Oregon State*	1/29/23	21
at Stanford*	1/23/22	20
UC San Diego*	1/21/22	22
vs. Notre Dame*	1/12/22	24
at Oregon State*	2/20/22	23
at Southern Cal*	2/14/22	21
at Stanford*	1/21/22	30
Cal Poly*	1/21/21	27
Furman*	11/26/21	26
at UC San Diego*	11/20/21	20
at San Francisco*	11/13/21	27
Sacramento St.*	11/9/21	23
Nyla Harris (1)		
at Syracuse	2/11/24	22
Kiki Jefferson (45) *at James Madison		
Syracuse	2/1/24	21
Boston College	1/25/24	27
vs. Gonzaga	11/26/23	21
vs. Liberty	11/25/23	20
vs. Texas State*	3/6/23	22
vs. Old Dominion*	3/5/23	22
at Old Dominion*	2/18/23	30
at Texas State*	2/16/23	20
Arkansas State*	2/11/23	22
at South Alabama*	2/2/23	22
at Georgia State*	1/28/23	28
Troy*	1/21/23	21
App State*	1/12/23	21
Coastal Carolina*	1/29/22	20
Liberty*	1/23/22	20
North Carolina*	1/20/22	30
at Longwood*	11/17/22	26
Queens*	11/13/22	21
at Millersville*	11/9/22	21
Maine*	11/7/22	23
Delaware*	3/5/22	20
Drexel*	3/3/22	22
at Hofstra*	2/27/22	23
UNCW*	2/20/22	21
College of Charleston*	2/18/22	20
at William & Mary*	2/6/22	32
Northeastern*	1/30/22	20
at UNCW*	1/21/22	20
at Delaware*	1/18/22	26
Elon*	1/9/22	22
at George Mason*	12/20/21	21
Villanova*	12/9/21	25
George Washington*	12/2/21	20
NC Central*	11/24/21	23
at Liberty*	11/18/21	21
Virginia*	11/9/21	31
vs. Drexel*	3/12/21	31
vs. Northwestern*	3/11/21	23
Delaware*	2/20/21	20
at Towson*	2/10/21	29
Northeastern*	1/25/21	20
Towson*	1/3/21	24
George Washington*	12/9/20	23
UNCW*	2/16/20	21
at College of Charleston*	1/19/20	21
Eylia Love (2) *at Georgia Tech		
Clemson	2/13/22	26
Boston College	1/27/22	20
Nina Rickards (4) *at Florida		
at Wake Forest*	3/20/23	25
at Miami*	12/11/22	23
at Dayton*	12/4/22	24
Bethune-Cookman*	11/18/22	23
Sydney Taylor (29) *at UMass		
at Georgia Tech	2/22/24	31
Harvard*	3/20/23	21
Davidson*	2/19/23	20
at George Mason*	2/12/23	21
at La Salle*	2/14/23	26
at Duquesne*	1/29/23	20
VCU*	1/26/23	21
at Dayton*	1/22/23	30
at FIU*	11/27/22	25
vs. Drake*	11/25/22	29
at UMass Lowell*	11/22/22	25
at Harvard*	11/18/22	23
vs. Notre Dame*	3/19/22	21
vs. Saint Joseph's*	3/5/22	20
at Saint Louis*	2/26/22	28
VCU*	2/23/22	23
George Mason*	2/11/22	27
Saint Louis*	2/5/22	22
at VCU*	1/12/22	32
vs. South Dakota State*	11/26/21	23
at Providence*	11/23/21	26
Iona*	11/16/21	25
vs. Ohio*	3/22/21	25
at VCU*	3/14/21	23
vs. Fordham*	3/12/21	27
vs. Saint Joseph's*	3/11/21	21
Davidson*	1/8/21	27
at Fairfield*	12/3/20	20
at Bryant*	11/25/20	24

SUCCESS AGAINST UNRANKED TEAMS

Louisville is 202-11 in their last 213 games against unranked opponents. From 2015 to 2019, Louisville won 102 consecutive games against teams not ranked in the AP Top 25.

NON-CONFERENCE SUCCESS

All-time, Walz is 185-35 (.841) against nonconference foes in regular season play. They are 88-12 in non-conference play over the past eight seasons.

ROSTER BREAKDOWN

Louisville returns four players that played for last year's team, brings in eight newcomers and had 11 departures.

■ **Returnees** - The Cardinals return two starters from last year's team in senior forward Olivia Cochran and sophomore forward Nyla Harris. Both Harris and Cochran played in all 38 games last season. Joining the two starters are senior guard Merissah Russell and redshirt-sophomore forward Alexia Mobley. Russell played in 37 games last season off the bench and scored six or more points 11 times. She scored eight points on 3-for-6 shooting in the Sweet 16 win over Ole Miss. Mobley made her collegiate debut on the road against Pitt last season. She scored her first collegiate points in the ACC Tournament against Wake Forest.

■ **Newcomers** - Louisville brings in a slew of transfers along with two international freshmen products for the 2023-24 squad.

■ Senior Eylia Love transferred to Louisville this past January and was with the Cardinals during their Elite Eight run but was not eligible to play. She comes to the Cardinals from Georgia Tech where she played 71 games and made 41 starts over two and a half seasons.

■ Junior guard Jayda Curry joins the Cards after transferring from Cal in April. She was the Pac-12 Freshman of the Year in 2021-22 and was selected to the All-Pac-12 team last season by the media. She has averaged 16.9 points per game over 53 games during her two seasons at Cal.

■ Junior forward Hennie van Schaik joins the Cardinals after transferring from CSU-Bakersfield this past April. van Schaik led Bakersfield in points per game (11.6) and rebounds (7.2) this past season. Over the summer, she competed with Netherlands at the FIBA U20 European Women's Championship.

■ Graduate guard Kiki Jefferson comes to the Cards after playing her first four collegiate seasons at James Madison. She was the 2023 Sun Belt Player of the Year and was the 2023 Sun Belt Tournament Most Outstanding player this past season. She has scored 1,838 points in her 116 career games played and hauled in 815 rebounds.

■ Graduate guard Sydney Taylor played her first four seasons at UMass before transferring to the Cards this past spring. She was an Atlantic 10 All-Conference First Team honoree last season and was one of the best three-point shooters in the country. She made 107 threes, which led the A-10 and ranked seventh nationally.

■ Graduate guard Nina Rickards came to the Cardinals in April after playing her first four years at Florida. She has played 120 collegiate games, the most of any player on the Cardinals roster, and eclipsed the 1,000-point plateau last season with the Gators. In her final year at Florida, she finished second on the team in scoring with a career-best 12.1 points per game and was third in rebounding (4.9) and steals (1.4) per game.

■ Forward Elif Istanbuluoglu comes to the Cardinals from Turkey and signed with Louisville in August. She has played with the Turkish National Team at the U18 and U20 Championships this past summer. Her older sister, Seval, played collegiately at Siena.

■ Center Eseosa Imafidon comes to the Cardinals after playing for Proctor Academy last season. She will redshirt this upcoming season but is originally from Nigeria. She came to the United States to play high school and prep basketball through the Access2Success Program.

EXPERIENCE AND SCORING NOT A PROBLEM FOR THE CARDS

The Cardinals have an influx of new players to the 2023-24 squad as eight newcomers have joined the squad but the team does not have an issue with experience or scoring. Of the 12 players on the roster, three are graduate students and five are juniors or older.

■ **Games on games on games** - Louisville has nine players on the roster that have played in 50 or more collegiate games. Five of those players have tallied over 100 career games with Nina Rickards leading the way with 149, followed by Kiki Jefferson at 145, Sydney Taylor at 136, Olivia Cochran at 129 and Merissah Russell at 104.

■ **Scoring Touch** - Several Cardinals players have the ability to light it up from

Nonconference Success Under Walz

Season	Record
2007-08	11-2
2008-09	13-1
2009-10	8-5
2010-11	9-5
2011-12	11-2
2012-13	12-2
2013-14	12-1
2014-15	12-1
2015-16	9-5
2016-17	13-2
2017-18	14-1
2018-19	13-0
2019-20	11-1
2020-21	7-1
2021-22	10-1
2022-23	9-4
2023-24	11-2
Total	185-35

CAREER DOUBLE-DOUBLES**Olivia Cochran (13)**

Florida State	2/29/24	16 pts., 11 rebs.
at NC State	2/5/24	17 pts., 12 rebs.
Morehead State	12/13/23	16 pts., 11 rebs.
vs. Liberty	11/25/23	21 pts., 11 rebs.
vs. Iowa	3/26/23	20 pts., 14 rebs.
at Pitt	12/18/22	11 pts., 13 rebs.
Longwood	11/25/22	10 pts., 10 rebs.
at Belmont	11/13/22	13 pts., 13 rebs.
Northwestern	3/24/21	13 pts., 15 rebs.
Syracuse	3/6/21	10 pts., 10 rebs.
at Wake Forest	1/24/21	10 pts., 11 rebs.
at Duke	12/9/20	11 pts., 12 rebs.
DePaul	12/4/20	19 pts., 10 rebs.

Jayda Curry (1) *at Cal

Arkansas-Pine Bluff*	12/03/22	19 pts., 10 rebs.
----------------------	----------	-------------------

Elif Istanbuluoglu (1)

Bellarmine	11/16/23	10 pts., 12 rebs.
------------	----------	-------------------

Nyla Harris (6)

Florida State	2/29/24	11 pts., 15 rebs.
at Syracuse	2/11/24	22 pts., 11 rebs.
Notre Dame	2/8/24	19 pts., 10 rebs.
Syracuse	2/1/24	18 pts., 14 rebs.
at Miami	12/31/23	13 pts., 12 rebs.
DePaul	11/12/23	13 pts., 11 rebs.

Kiki Jefferson (21) *at James Madison

Virginia	2/25/24	10 pts., 10 rebs.
at Texas State*	2/16/22	20 pts., 12 rebs.
Louisiana*	2/9/23	12 pts., 11 rebs.
at Georgia Southern*	2/4/23	17 pts., 10 rebs.
at South Alabama*	2/2/23	22 pts., 14 rebs.
at Marshall*	1/5/23	11 pts., 13 rebs.
Coastal Carolina*	12/29/22	20 pts., 10 rebs.
Liberty*	11/23/22	20 pts., 12 rebs.
North Carolina*	11/20/22	30 pts., 10 rebs.
Maine*	11/7/22	23 pts., 11 rebs.
at Delaware*	1/18/22	26 pts., 10 rebs.
at Towson*	1/16/22	19 pts., 10 rebs.
at George Mason*	12/20/21	21 pts., 10 rebs.
Virginia*	11/9/21	31 pts., 11 rebs.
vs. Drexel*	3/12/21	31 pts., 11 rebs.
UNCW*	2/16/21	14 pts., 12 rebs.
at Towson*	2/10/21	29 pts., 10 rebs.
Elon*	2/6/21	14 pts., 12 rebs.
at College of Charleston*	1/30/21	10 pts., 11 rebs.
Towson*	1/3/21	24 rebs., 11 rebs.
at College of Charleston*	1/19/20	21 pts., 12 rebs.

Eylia Love (2) *at Georgia Tech

NC A&T	12/3/23	10 pts., 10 rebs.
at Syracuse*	1/20/22	10 pts., 13 rebs.

Nina Rickards (5) *at Florida

vs. Alabama	11/24/23	10 pts., 10 rebs.
UNC Greensboro*	12/18/22	12 pts., 10 rebs.
at Dayton*	12/4/22	24 pts., 11 rebs.
Kentucky*	2/15/21	19 pts., 10 rebs.
Texas A&M*	1/3/21	14 pts., 10 rebs.

Sydney Taylor (2) *at UMass

at Rhode Island*	2/16/23	18 pts., 10 rebs.
at La Salle*	2/4/23	26 pts., 10 rebs.

Hennie van Schaik (4) *at CSU-Bakersfield

vs. UC Santa Barbara*	3/10/23	14 pts., 11 rebs.
Long Beach State*	3/2/23	15 pts., 12 rebs.
Hawaii*	1/28/23	18 pts., 12 rebs.
Bethesda (CA)*	11/9/21	13 pts., 14 rebs.

the floor. Seven different players have tallied at least one 20-point game in their careers and three players have had 10 or more 20-point games. In total, there have been 100 20-point games by Cardinals players in their careers. Kiki Jefferson leads the way with 45, Sydney Taylor is second with 29, Jayda Curry has 16, Nina Rickards has four, Olivia Cochran has three, Eylia Love has two and Nyla Harris has one.

CARDS WIN GOLD AT 2023 GLOBL JAM

The 2023-24 Cardinals have already hit the floor together this year as they competed in the 2023 GLOBL JAM Tournament in Toronto back in July. The Cardinals were the representatives from the United States and were joined by national U23 teams from Canada, Puerto Rico and BAL Select.

■ The Cardinals went 2-1 in the pool play games with wins over Puerto Rico (78-55) and BAL Select (72-39) and dropped a close game against Canada (71-74). The Cardinals still advanced to the gold medal game where they had a rematch against Team Canada.

■ Trailing by one with under a minute left, Sydney Taylor knocked down the game-winning three to clinch the win for the Cardinals and claimed the Gold Medal over Canada. Taylor was named Tournament MVP after she left the Cardinals in scoring over the four games.

■ Merissah Russell won the event for the second-straight year. She won gold back in 2022 with Team Canada and she competed with the Cards for this year's tournament.

PRESEASON HONORS FOR COCHRAN, JEFFERSON AND CURRY

Olivia Cochran, Jayda Curry and Kiki Jefferson all earned preseason honors ahead of the 2023-24 season.

■ Cochran has been named to a few national Player of the Year Watch Lists as the season has gotten underway. Cochran was named to the Wooden Award Preseason Top 50 Watch List on Nov. 14. She was one of two Cardinals to be selected for the Naismith Women's Player of the Year Watch List. She was named to the Preseason All-ACC team for the first time in her career. The Cardinals have had at least one player named to the Preseason All-ACC team since they joined the league in the 2014-15 season. Cochran was also named to the Katrina McClain Award Watch List for the third-straight season. She was one of five players that has been on each of the last three McClain Award Watch Lists.

■ Curry joined Cochran on the Naismith Women's Player of the Year Watch List. She was one of two Cardinals (Kiki Jefferson) that were named to the ACC Newcomer Watch List. She joins the Cardinals from Cal where she was the Pac-12 Freshman of the Year in 2021-22 and was named to the First Team All Pac-12 last season by the media.

■ Jefferson was the second Cardinal with Curry to be named to the ACC Newcomer Watch List. It is the first time since the Cardinals joined the ACC that they had multiple players on the Newcomer Watch List. Jefferson was also named to the Cheryl Miller Award Watch List, that recognizes the best small forward in college basketball. It is the first time Jefferson has made the Miller Award Watch List in her career and the fourth-straight season the Cardinals have had a representative on the list.

PRESEASON AP AND USA TODAY RANKINGS

The Cardinals were ranked 17th in the 2023-24 Associated Press preseason poll and were picked 15th in the USA Today poll. They were one of five ACC teams in the AP poll and were one of seven ACC teams in the USA Today Poll.

■ **Preseason Top-20** - It marks the 13th-consecutive season that Louisville has been ranked in the Top-20 of the AP preseason poll and the 14th time in Walz's 17-year tenure. The 13-year streak in the preseason Top-20 is the longest active streak of any ACC team. The second-longest active streak among ACC teams is just two years.

RETURNING STARTERS

The Cards return only two players that have made a start in a Louisville uniform but the pair have combined for 110 starts during their time at Louisville heading into the 2023-24 season. (Cochran - 95, Harris - 15).

MOST UOFL VICTORIES

The Cardinals won 26 games last season and it tied for 11th-most in a single season in program history. The top eight and 13 of the 14 top win totals have come under Walz.

Most UoFL Victories		
Year	Record	NCAA Postseason
2017-18	36-3	Final Four
2008-09	34-5	Runner-Up
2013-14	33-5	Elite Eight
2018-19	32-4	Elite Eight
2021-22	29-5	Final Four
2016-17	29-8	Sweet 16
2012-13	29-9	Runner-Up
2019-20	28-4	*No NCAA Tourney
2006-07	27-8	2nd Round
2014-15	27-7	Sweet 16
2022-23	26-12	Elite Eight
2020-21	26-4	Elite Eight
2015-16	26-8	2nd Round
2007-08	26-10	Sweet 16

THE LAST TIME LOUISVILLE ...

Defeated a Top-5 team:

Nov. 20, 2022 - No. 3 Texas, W, 71-63

Defeated a Top-25 team:

Feb. 8, 2024 - No. 12 Notre Dame, W, 73-66

Scored 100 or more points:

Nov. 16, 2023 - vs. Bellarmine, W, 111-33

Scored less than 50 points:

Dec. 4, 2022 - Middle Tennessee, L, 49-67

Allowed 100 or more points:

Dec. 20, 2009 - at Kentucky, L, 67-101

Held a team to less than 50 points:

Jan. 11, 2024 - at Pitt, W, 74-44

Won an overtime game:

Dec. 19, 2019 - at UT Martin, W, 71-63 (2OT)

Lost an overtime game:

Feb. 16, 2023 - at #10 Notre Dame, L, 76-78 (OT)

Played a double-overtime game:

Dec. 19, 2019 - at UT Martin, W, 71-63 (2OT)

THE LAST TIME UOFL HAD ...

A player score 30 points:

31, Sydney Taylor at Georgia Tech (2/22/24)

A player score 35 points:

47, Asia Durr vs. NC State (2/28/19)

A player score 40 points:

47, Asia Durr vs. NC State (2/28/19)

Two players score 20 points in a game:

21, Olivia Cochran; 20, Kiki Jefferson vs. Liberty (11/25/23)

A player grab 15 boards:

15, Nyla Harris vs. Florida State (2/29/24)

A player grab 20 boards:

20, Angel McCoughtry vs. Syracuse (2/3/09)

Two or more players grab 10 rebounds in a game:

15, Nyla Harris; 11, Olivia Cochran vs. Florida State (2/29/24)

A player dish out 10 assists:

10, Mykasa Robinson vs. Wake Forest (3/3/23)

A player record five or more steals:

6, Jayda Curry vs. NC A&T (12/3/23)

A player with five or more blocked shots:

5, Emily Engstler vs. FSU (1/27/22)

Two players record a double-double:

Nyla Harris, Olivia Cochran vs. Florida State (2/29/24)

Three players record a double-double:

M. Hines-Allen, M. Moore, S. Fuehring vs. Va. Tech (2/9/17)

Seven players score in double figures:

Durr (12), Fuehring (12), Jones (12), Dunham (11), Hines-Allen (11), Shook (11), Evans (10) vs. TSU (12/12/17)

Eight players score in double figures:

Taylor (15), Harris (14), Mobley (12), Russell (11), Curry (11), Jefferson (11), Cochran (10), Istanbuluoglu (10) vs. BU (11/16/23)

A player records a triple-double:

11 pts., 11 rbs., 10 assts. Mariya Moore vs. Syracuse (12/29/16)

A player with 7 or more 3-pointers:

7, Sydney Taylor at Georgia Tech (2/22/24)

A player hit a last-second shot to win a game:

Emily Engstler, :03.3 at No. 16 Georgia Tech, 50-48 (1/2/21)

HOME COURT ADVANTAGE

Since the KFC Yum! Center opened its doors for the 2010-11 season, the Cardinals have had one of the best home court advantages in the country. Louisville is 205-33 all-time at the KFC Yum! Center over the past 14 seasons. During that span, the Cardinals have won at least 11 home games every season. In six of those seasons, the Cardinals lost one home game or less. The Cardinals program record for consecutive home wins is 21 games, a streak that spanned over three seasons. Over the past seven seasons, Louisville is 100-9 at home.

BEST FANS IN THE COUNTRY

During the regular season, Louisville averaged 8,640 fans at the KFC Yum! Center, which is first in the ACC and currently ranks eighth in the country. The 8,640 fans per game currently ranks ninth in ACC men's basketball this season. For 14 straight-seasons, they have led the ACC and ranked in the top 10 in the country in attendance. They had a season-high 12,249 fans against Virginia Tech, the largest home crowd since the 2018-19 season.

KFC Yum! Center Attendance			
Year	Avg.	High	DI Rank
2010-11	10,859	22,152 vs. UK (12/5/10)	2nd
2011-12	10,670	16,483 vs. UConn (2/7/12)	2nd
2012-13	9,358	15,453 vs. UK (12/2/12)	3rd
2013-14	9,469	22,163 vs. UConn (3/3/13)	3rd
2014-15	9,515	14,862 vs. UK (12/7/14)	3rd
2015-16	9,503	16,524 vs. Cal (11/15/15)	4th
2016-17	8,256	12,245 vs. UK (12/4/16)	5th
2017-18	7,836	14,248 vs. FSU (1/21/18)	5th
2018-19	9,531	17,023 vs. UConn (1/31/19)	3rd
2019-20	9,062	12,086 vs. ND (1/26/20)	5th
2020-21*	2,557	2,989 vs. NCST (2/1/21)	2nd
2021-22	8,361	12,167 vs. Kentucky (12/12/21)	4th
2022-23	8,779	12,015 vs. Notre Dame (2/26/23)	5th
2023-24	8,640	12,249 vs. Virginia Tech (2/18/24)	8th

*Fans limited due to covid protocols

REPRESENTING THEIR COUNTRIES

The Cardinals had a number of players represent their countries at international competitions this past summer.

- **USA** - Following her MVP performance at the 2023 GLOBL JAM Tournament in Toronto, Sydney Taylor was added to the USA 3x3 U23 Nations League Team for multiple stops throughout the summer. She made her debut with Team USA in Chile as the team won five of the six single-day tournaments during that stop. Later on, she played with Team USA in Quebec before being named to the USA Nations League Final team that competed in Mongolia back in September.
- **Netherlands** - Hennie van Schaik competed with Team Netherlands in the 2023 FIBA U20 European Championships in late July and August. She played in four total games as the Netherlands finished third overall at the event.
- **Turkey** - Elif Istanbuluoglu played with Turkey at the 2023 FIBA U18 and U20 Championships this past summer before ultimately committing to the Cards. At the U18 Championships, she averaged 11.0 points and 10.7 rebounds per game as Turkey reached the quarterfinals.

NCAA TOURNAMENT SUCCESS

Louisville has been one of the most consistent teams in the NCAA Tournament during Jeff Walz's tenure.

- They are the only team in the country that have been to each of the last five Elite Eights.
- They are just one of three teams (UConn, South Carolina) with an active Sweet 16 streak of six years or longer.
- Louisville is one of five programs (UConn, Stanford, South Carolina, Notre Dame) to make four or more Final Fours in the last 15 seasons.

WALZ IN THE BIG DANCE

Walz boasts a 40-14 record in NCAA Tournament games. He is eighth all-time in winning percentage and fifth among active coaches. He has directed UofL to a pair of national runner-up finishes (2009, 2013), four Final Fours (2009, 2013, 2018, 2022), eight Elite Eights (2009, 2013, 2014, 2018, 2019, 2021, 2022, 2023), 12 trips to the Sweet 16 and 14 NCAA Tournaments. Walz is one of five active head coaches to make four or more Final Fours.

NCAA Tournament All-Time Winning Percentage			
No.	Coach	Record	Years
1.	Geno Auriemma, UConn	.857 (132-22)	1989-pres
2.	Pat Summitt, Tennessee	.830 (112-23)	1982-2012
3.	Kim Mulkey, Baylor/LSU	.773 (58-17)	2001-pres
4.	Linda Sharp, USC/Texas St.	.760 (19-6)	1982-1997
5.	Leon Barmore, Louisiana Tech	.747 (56-19)	1983-2002
6.	Tara VanDerveer, OSU, Stan	.742 (98-34)	1982-pres
7.	Vic Schaefer, Miss. St./Texas	.742 (23-8)	1990-pres
8.	Jeff Walz, Louisville	.741 (40-14)	2008-pres
9.	Muffet McGraw, Notre Dame	.736 (67-24)	1987-2020
10.	Brenda Frese, Maryland	.700 (42-18)	2002-pres

TOP TEAM EFFORTS UNDER JEFF WALZ

- Most points scored in a game:** 116 vs. DePaul, 12/4/20 (UofL 116, DePaul 75)
- Most field goals made in a game:** 49 vs. DePaul, 12/4/20 (UofL 116, DePaul 75)
- Most 3-point field goals made in a game:** 18 vs. Syracuse, 2/11/12 (UofL 89, SU 62)
- Most free throws made in a game:** 33 at Kentucky, 12/11/22 (UofL 86, UK 72)
- Most free throws attempted in a game:** 42 vs. Rutgers, 1/11/09 (UofL 64, RU 59)
- Most total rebounds in a game:** 68 vs. Loyola-Chicago, 11/9/13 (UofL 101, LC 54)
- Most assists in a game:** 28 vs. Ball State, 12/17/13 (UofL 105, BSU 67); vs. Chattanooga, 3/18/17 (UL 82, UTC 62)
- Most steals in a game:** 24 vs. BYU, 3/21/15 (UofL 86, BYU 53)
- Most blocked shots in a game:** 11 vs. DePaul, 12/4/20 (UofL 116, DePaul 75); vs. TSU, 12/2/18 (UofL 107, TSU 52)
- Fewest turnovers in a game:** 3 vs. Oregon State, 3/26/18 (UofL 76, OSU 43)
- Fewest points allowed in a game:** 25 vs. Bellarmine, 11/16/21 (UofL 82, BU 25); vs. Tennessee State, 12/31/12 (UofL 88, TSU 25)
- Largest margin of victory:** 78 vs. Bellarmine, 11/16/23 (UofL 111, BU 33)
- Highest field goal percentage in a game:** .678 (40-59) vs. IPFW, 11/29/10 (UofL 100, IPFW 79)
- Highest 3-point percentage in a game (min. 8 attempts):** .714 (10-14) vs. Rutgers, 3/8/09 (UofL 87, RU 82, 2 OT)
- Lowest field goal percentage allowed:** .149 (7-47) Bellarmine, 11/16/21 (UofL 82, BU 25)

HONORS

- Olivia Cochran**
2023-24 Wooden Award Preseason Top 50 Watch List, 2023-24 Naismith Women's Player of the Year Watch List, 2023-24 Preseason All-ACC, 2024 McClain Award Watch List, ACC Second Team All-Tournament, 2023 McClain Award Watch List, 2022 McClain Award Watch List, 2020-21 ACC All-Freshman Team
- Jayda Curry**
2023-24 Naismith Women's Player of the Year Watch List, ACC Newcomer Watch List, All-Pac-12 Honorable Mention - Coaches (2023), Pac-12 All-Conference - Media (2023), Pac-12 Freshman of the Year - Media (2022), Pac-12 All-Conference - Media (2022), Pac-12 All-Freshman Team - Media (2022), All-Pac-12 Honorable Mention - Coaches (2022), Pac-12 All-Freshman Team - Coaches (2022), Pac-12 Freshman of the Week (Five times)
- Kiki Jefferson**
2024 Cheryl Miller Award Top 10 List, 2023 Betty Chancellor Classic All-Tournament Team, 2024 Cheryl Miller Award Watch List, ACC Newcomer Watch List, 2023 Sun Belt Tournament Most Outstanding Player, 2023 Sun Belt Player of the Year, 2023 First Team All-Sun Belt, 2023 VaSID All-State First Team, 2023 ECAC First Team, 3x 2022-23 Sun Belt Player of the Week (11/15, 11/22, 2/21), 2022 Preseason All-Sun Belt Second Team, 2022 CAA All-Conference Second Team, 2021-22 Preseason All-CAA First Team, 2022 Becky Hammon Mid-Major Player of the Year Award Preseason Watch List, 2021 All-CAA First Team, 2021 CAA Player of the Week (1/4/21), 2021 CAA All-Tournament Team, 2021 VaSID All-State First Team, 2020-21 All-CAA First Team, 2020 CAA Rookie of the Year, 2020 CAA All-Rookie Team, 9x CAA Rookie of the Week (11/11/19, 11/18/19, 12/23/19, 1/6/20, 1/20/20, 1/27/20, 2/17/20, 2/24/20)
- Nina Rickards**
2023 Betty Chancellor Classic All-Tournament Team
- Sydney Taylor**
2023 GLOBL JAM Tournament MVP, 2023 Atlantic 10 All-Conference First Team, 2023 Atlantic 10 All-Academic Team, 2022 FIU Thanksgiving Classic MVP, Atlantic 10 Player of the Week (11/28/22), 2022 Atlantic 10 All-Conference Second Team, 2022 Atlantic 10 All-Championship Team, Atlantic 10 Player of the Week (1/17/22, 2/28/22), 2021 All-Championship Team Atlantic-10
- Hennie van Schaik**
2022-23 All-Big West Honorable Mention, 2021-22 All-Big West Freshman Team
- Jeff Walz**
2021-22 Naismith Coach of the Year Late Season Watch List, 2020-21 Naismith Coach of the Year Semifinalist, 2019-20 Naismith Coach of the Year Semifinalist, 2019 USA Basketball National Coach of the Year, 2018-19 Naismith Coach of the Year Semifinalist, 2017-18 ACC Coach of the Year, 2017-18 Naismith Coach of the Year Semifinalist

2023-24 Women's Basketball Results

RECORD: 23-7 Overall (Home: 14-2; Away: 7-4; Neutral: 2-1; ACC: 12-5)

Date	Opponent	Dec.	Result	Margin	Rec.	High Scorer	High Rebounder	High Assists	Attendance
N 6	at Cincinnati	W	77-59	+18	1-0	Taylor - 16	Cochran - 10	Cochran, Rickards - 3	1,725
N 12	DEPAUL	W	81-74	+7	2-0	Cochran - 21	Harris - 11	Cochran, Rickards - 3	7,456
N 16	BELLARMINE	W	111-33	+78	3-0	Taylor - 15	Istanbulluoglu - 12	Taylor, Russell, Rickards - 4	7,486
N 19	BUCKNELL	W	77-44	+33	4-0	Taylor - 17	Cochran - 8	Curry, Jefferson - 4	7,383
N 24	vs. Alabama	L	73-78	-8	4-1	Harris - 18	Rickards - 10	Curry - 6	200
N 25	vs. Liberty	W	72-63	+9	5-1	Cochran - 21	Cochran - 11	Taylor - 4	256
N 26	vs. Gonzaga	W	81-70	+11	6-1	Jefferson - 21	Jefferson - 4	Rickards, Jefferson - 5	200
N 29	at #19/20 Ole Miss	W	64-58	+6	7-1	Jefferson - 16	Taylor - 6	Rickards - 3	2,694
D 3	NC A&T	W	80-40	+40	8-1	Curry - 12	Love - 10	Curry - 5	7,618
D 10	KENTUCKY	W	73-61	+13	9-1	Love - 14	Cochran, Harris - 8	Rickards - 3	11,291
D 13	MOREHEAD STATE	W	74-48	+26	10-1	Cochran, Harris - 16	Cochran - 11	Rickards - 5	7,086
D 16	at #17/18 UConn	L	62-86	-24	10-2	Jefferson - 19	Jefferson, Cochran - 6	Jefferson - 5	13,028
D 20	#23 WASHINGTON	W	59-51	+8	11-2	Cochran - 14	Jefferson - 8	Rickards, Taylor - 2	8,018
D 31	at #RV/23 Miami	W	77-72	+5	12-2	Curry - 19	Harris - 12	Rickards - 4	2,120
J 4	DUKE	W	61-44	+17	13-2	Jefferson - 15	Cochran - 16	Taylor - 4	7,789
J 11	at Pitt	W	74-44	+30	14-2	Taylor - 13	Harris - 6	Love - 5	868
J 14	WAKE FOREST	W	83-62	+21	15-2	Curry, Cochran - 12	Russell, Mobley - 5	Rickards - 5	8,901
J 18	at Clemson	W	81-64	+17	16-2	Curry - 19	Taylor - 8	Jefferson - 8	868
J 21	at #23/24 North Carolina	L	68-79	-11	16-3	Harris - 16	Cochran, Love - 5	Jefferson - 5	6,073
J 25	BOSTON COLLEGE	W	88-60	+28	17-3	Jefferson - 27	Cochran, Jefferson - 7	Rickards, Jefferson - 4	7,606
J 28	PITT	W	77-58	+19	18-3	Curry - 15	Harris - 6	Cochran, Taylor, Love - 4	9,452
F 1	#21/23 SYRACUSE	W	81-69	+12	19-3	Jefferson - 21	Harris - 14	Taylor - 4	8,254
F 5	at #3/5 NC State	L	67-77	-10	19-4	Cochran - 17	Cochran - 12	Rickards - 3	5,500
F 8	#12/14 NOTRE DAME	W	73-66	+7	20-4	Harris - 19	Harris - 10	Russell, Jefferson, Taylor - 4	9,417
F 11	at #23 Syracuse	L	72-73	-1	20-5	Harris - 22	Harris - 11	Rickards - 4	3,912
F 15	at Boston College	W	69-67	+2	21-5	Rickards - 16	Cochran - 9	Love - 3	937
F 18	#12/13 VIRGINIA TECH	L	70-86	-16	21-6	Jefferson - 19	Cochran - 6	Harris, Cochran - 2	12,249
F 22	at Georgia Tech	W	80-62	+12	22-6	Taylor - 31	Cochran - 12	Jefferson - 5	1,554
F 25	VIRGINIA	L	68-73	-5	22-7	Harris - 17	Jefferson - 10	Rickards - 4	10,305
F 29	FLORIDA STATE	W	70-55	+15	23-7	Taylor, Cochran - 16	Harris - 15	Jefferson - 3	7,932

Team Extended Statistics

Team Box Score Extended

No.	Player	Total			3-Point			F-Throw		Rebounds				Advanced													
		GP-GS	MIN	AVG	FG-FGA	FG%	3FG-3FGA	3FG%	FT-FTA	FT%	OFF	DEF	TOT	AVG	PF	DQ	A	A/G	TO	TO/G	A/TO	BLK	BLK/G	STL	STL/G	PTS	AVG
12	JEFFERSON, Kiki	30-28	754:49	25.2	130-274	.474	25-75	.333	110-123	.894	34	102	136	4.5	55	0	75	2.50	63	2.10	1.19	7	0.23	33	1.10	395	13.2
1	TAYLOR, Sydney	30-28	735:40	24.5	113-299	.378	53-162	.327	48-66	.727	20	65	85	2.8	71	0	62	2.07	57	1.90	1.09	2	0.07	27	0.90	327	10.9
44	COCHRAN, Olivia	30-30	808:31	27.0	129-258	.500	0-5	.000	67-95	.705	61	135	196	6.5	82	3	42	1.40	53	1.77	0.79	15	0.50	41	1.37	325	10.8
2	HARRIS, Nyia	30-30	801:26	26.7	124-211	.588	0-1	.000	71-99	.717	89	105	194	6.5	68	2	20	0.67	52	1.73	0.38	7	0.23	26	0.87	319	10.6
30	CURRY, Jayda	30-5	639:55	21.3	94-233	.403	39-98	.398	39-50	.780	12	37	49	1.6	59	1	60	2.00	50	1.67	1.20	0	0.00	22	0.73	266	8.9
15	RICKARDS, Nina	30-25	693:17	23.1	83-159	.522	0-1	.000	45-64	.703	31	76	107	3.6	45	0	77	2.57	58	1.93	1.33	3	0.10	36	1.20	211	7.0
13	RUSSELL, Merissah	29-2	482:44	16.6	50-130	.385	16-58	.276	25-34	.735	27	43	70	2.4	41	0	28	0.97	39	1.34	0.72	3	0.10	27	0.93	141	4.9
24	LOVE, Eyllia	30-0	493:51	16.5	44-97	.454	4-11	.364	27-36	.750	36	47	83	2.8	51	0	27	0.90	32	1.07	0.84	1	0.03	29	0.97	119	4.0
11	ISTANBULLUOGLU, Elif	30-2	386:44	12.9	30-81	.370	4-19	.211	14-22	.636	26	44	70	2.3	27	0	13	0.43	29	0.97	0.45	5	0.17	4	0.13	78	2.6
23	MOBLEY, Alexia	22-0	122:13	5.6	15-24	.625	0-0	.000	9-15	.600	16	25	41	1.9	14	0	6	0.27	6	0.27	1.00	3	0.14	7	0.32	39	1.8
3	VAN SCHAIK, Hennie	14-0	80:51	5.8	9-23	.391	4-13	.308	1-2	.500	3	9	12	0.9	14	0	1	0.07	7	0.50	0.14	2	0.14	4	0.29	23	1.6
Total		30	6000		821-1789	.459	145-443	.327	456-606	.752	390	731	1121	37.4	527	6	411	13.70	456	15.20	0.90	48	1.60	256	8.53	2243	74.8
Opponents		30	6000		692-1661	.417	168-558	.301	324-463	.700	291	639	930	31.0	575	13	354	11.80	559	18.63	0.63	95	3.17	210	7.00	1876	62.5

Score by Periods

Team	1st	2nd	3rd	4th	OT	TOT
Louisville	561	565	572	545	0	2243
Opponents	513	407	466	490	0	1876

Louisville Women's Basketball Game-by-Game Team Statistics

Teams	FG-FGA	Pct	3FG-FGA	Pct	FT-FTA	Pct	O	D	Reb	PF-D	A	TO	STL	BLK	1Q	2Q	3Q	4Q	OT	TOT
Cincinnati Louisville	20-53 23-59	.377 .390	3-13 5-17	.231 .294	16-22 26-32	.727 .813	8 15	20 26	28 41	25-23 23-25	8 11	21 14	7 9	3 3	15 14	7 22	18 16	19 25		59 77
DePaul LOUISVILLE	28-70 27-60	.400 .450	11-28 2-17	.393 .118	7-12 25-31	.583 .806	14 10	25 31	39 41	23-15 15-23	17 9	15 14	7 8	1 0	29 29	9 13	20 21	16 18		74 81
Bellarmino LOUISVILLE	12-57 41-66	.211 .621	4-21 6-18	.190 .333	5-5 23-26	1.000 .885	8 12	14 37	22 49	22-15 15-22	3 23	29 13	4 12	1 3	6 24	3 24	12 30	12 33		33 111
Bucknell LOUISVILLE	19-42 27-60	.452 .450	5-16 5-13	.313 .385	1-5 18-21	.200 .857	0 15	19 25	19 40	18-10 10-18	9 16	26 15	5 17	0 1	18 22	6 15	7 20	13 20		44 77
Alabama Louisville	26-54 27-66	.481 .409	9-24 3-14	.375 .214	17-24 16-24	.708 .667	13 21	20 16	33 37	21-26 26-16	10 13	20 18	6 7	2 0	22 18	16 15	20 22	20 18		78 73
Liberty Louisville	22-46 21-61	.478 .339	8-17 5-15	.471 .333	11-14 25-31	.786 .806	3 16	21 18	24 34	22-15 15-22	15 9	21 12	6 10	3 1	17 10	15 22	20 14	11 26		63 72
Gonzaga Louisville	22-40 34-58	.550 .586	7-18 7-19	.389 .368	19-23 6-7	.826 .857	6 6	17 13	23 19	19-24 25-19	15 19	21 16	3 10	2 1	21 19	15 28	20 12	14 22		70 81
Ole Miss Louisville	22-51 18-44	.431 .409	1-11 3-6	.091 .500	13-28 25-36	.464 .694	14 9	22 24	36 33	27-14 24-26	12 8	21 18	7 8	5 1	14 14	16 14	14 22	14 14		58 64
NC A&T LOUISVILLE	14-39 31-70	.359 .443	1-8 8-25	.125 .320	11-15 10-13	.733 .769	5 23	18 22	23 45	16-14 14-15	8 11	31 17	5 16	3 6	13 29	8 25	9 15	10 11		40 80
Kentucky LOUISVILLE	25-55 27-59	.455 .458	7-21 6-19	.333 .316	4-7 13-19	.571 .684	2 15	21 30	23 45	21-16 16-21	14 14	19 18	5 8	2 1	16 18	11 10	17 22	17 23		61 73
Morehead State LOUISVILLE	19-60 28-69	.317 .406	4-21 3-13	.190 .231	6-12 15-18	.500 .833	13 16	26 31	39 47	17-16 16-17	6 9	17 10	4 6	1 2	14 16	8 25	16 18	10 15		48 74
UConn Louisville	32-54 25-61	.593 .410	7-18 4-15	.389 .267	15-20 8-12	.750 .667	5 11	28 18	33 29	15-20 21-15	24 13	20 19	12 12	7 3	28 27	18 15	19 9	21 11		86 62
Washington LOUISVILLE	19-52 26-60	.365 .433	7-23 1-6	.304 .167	6-7 6-8	.857 .750	6 13	20 27	26 40	13-13 13-12	11 8	14 14	9 10	3 0	13 13	13 18	12 13	13 15		51 59
Miami Louisville	27-55 28-56	.491 .500	7-18 5-9	.389 .556	11-16 16-21	.688 .762	10 13	17 21	27 34	23-18 18-23	13 12	20 22	10 9	3 3	23 20	14 17	20 21	15 19		72 77
Duke LOUISVILLE	19-57 21-50	.333 .420	2-19 2-8	.105 .250	4-9 17-21	.444 .810	17 11	19 22	36 33	22-16 16-22	8 11	27 19	12 12	7 4	15 21	4 14	12 19	13 7		44 61
Pitt Louisville	16-44 30-57	.364 .526	5-17 7-19	.294 .368	7-11 7-10	.636 .700	8 8	21 23	29 31	18-17 17-18	10 20	24 13	3 11	4 1	11 20	14 12	13 16	6 26		44 74
Wake Forest LOUISVILLE	23-54 31-56	.426 .554	7-25 7-11	.280 .636	9-10 14-20	.900 .700	9 11	17 21	26 32	19-15 15-19	13 17	19 16	6 8	0 0	19 20	8 26	14 20	21 17		62 83
Clemson Louisville	23-55 31-59	.418 .525	5-25 8-22	.200 .364	13-19 11-17	.684 .647	8 11	21 27	29 38	18-20 20-18	10 20	14 12	5 3	0 1	13 26	19 21	9 19	23 15		64 81
North Carolina Louisville	28-57 26-59	.491 .441	6-14 4-15	.429 .267	17-23 12-23	.739 .522	13 9	29 19	42 28	23-24 24-23	14 15	17 11	5 5	11 2	22 13	14 23	24 13	19 19		79 68
Boston College LOUISVILLE	22-54 32-56	.407 .571	6-17 4-8	.353 .500	10-18 20-27	.556 .741	13 15	15 23	28 38	24-17 17-24	8 14	20 15	8 9	1 2	13 18	18 21	13 22	16 27		60 88
Pitt LOUISVILLE	20-55 30-62	.364 .484	5-17 7-20	.294 .350	13-15 10-13	.867 .769	11 11	23 24	34 35	12-16 16-12	12 18	18 12	6 12	3 2	9 19	20 17	19 26	10 15		58 77
Syracuse LOUISVILLE	25-69 28-56	.362 .500	8-21 3-13	.381 .231	11-23 22-29	.478 .759	18 12	18 29	36 41	20-19 19-20	11 16	13 15	9 8	1 2	21 14	13 26	13 20	22 21		69 81
NC State Louisville	25-58 25-68	.431 .368	10-21 4-16	.476 .250	17-24 13-17	.708 .765	10 15	31 27	41 42	16-19 19-16	12 9	13 12	8 7	4 0	28 22	19 8	12 19	18 18		77 67
Notre Dame LOUISVILLE	26-64 26-60	.406 .433	2-18 7-18	.111 .389	12-14 14-23	.857 .609	12 15	24 27	36 42	19-16 16-19	11 16	17 21	14 6	5 2	12 15	17 15	18 24	19 19		66 73
Syracuse Louisville	28-73 23-57	.384 .404	6-23 3-12	.261 .250	11-13 23-24	.846 .958	20 14	21 26	41 40	20-18 19-19	12 16	13 14	7 6	12 1	19 25	18 15	15 17	21 15		73 72
Boston College Louisville	26-59 26-57	.441 .456	2-9 1-6	.222 .167	13-17 16-21	.765 .762	7 13	20 26	27 39	22-19 19-22	15 7	18 24	12 8	2 1	17 8	15 24	20 19	15 18		67 69
Virginia Tech LOUISVILLE	34-52 28-66	.654 .424	10-23 4-16	.435 .250	8-9 10-14	.889 .714	7 13	28 11	35 24	17-13 13-17	21 7	14 4	2 9	2 0	20 13	28 22	22 19	16 16		86 70
Georgia Tech Louisville	21-50 29-52	.420 .558	4-11 12-22	.364 .545	16-18 10-13	.889 .769	8 8	16 23	24 31	12-18 18-12	12 19	16 15	7 5	0 1	13 21	15 22	12 20	22 17		62 80
Virginia LOUISVILLE	27-64 24-56	.422 .429	7-21 6-17	.333 .353	12-18 14-20	.667 .700	17 12	22 24	39 36	18-18 18-18	12 12	14 15	6 4	3 2	16 15	16 11	15 28	26 14		73 68
Florida State LOUISVILLE	22-68 28-68	.324 .412	2-20 3-14	.100 .214	9-12 11-15	.750 .733	6 17	26 40	32 57	14-12 12-14	8 9	7 18	10 1	5 1	16 18	10 25	11 16	18 11		55 70

Louisville Women's Basketball Specialty Statistics

GAME	Points	Points	2nd	Fast		Largest	Largest	Times	Lead	Margins	
	in Paint	Off TO	Chance	Break	Bench	Lead	Deficit	Tied	Changes	Half	Final
at Cincinnati	34/24	27/8	12/4	17/11	26/14	20 (4th, 0:55)	2 (1st, 9:09)	3	5	+14	+18
DePaul	46/28	23/12	9/12	10/4	33/3	13 (4th, 4:13)	13 (1st, 4:49)	4	6	+4	+7
Bellarmine	62/14	42/7	25/2	18/0	50/9	78 (4th, 0:35)	0	0	0	+39	+78
Bucknell	36/18	34/6	20/0	4/0	26/2	35 (4th, 0:26)	0	0	0	+13	+33
vs. Alabama	42/34	10/24	23/13	11/13	15/19	2 (1st, 8:44)	8 (2nd, 3:06)	12	9	-5	-5
vs. Liberty	26/22	19/12	17/9	10/2	11/8	12 (4th, 0:15)	10 (2nd, 5:00)	3	6	0	+9
vs. Gonzaga	44/20	27/21	7/11	18/3	26/5	17 (4th, 4:33)	4 (1st, 0:46)	5	2	+11	+11
at #19/20 Ole Miss	22/28	18/19	12/4	2/8	14/10	8 (4th, 3:45)	4 (2nd, 1:10)	4	7	-2	+6
NC A&T	43/8	36/22	25/2	8/2	44/15	44 (4th, 2:24)	0	0	0	+33	+40
Kentucky	34/34	23/11	11/0	8/2	24/9	13 (4th, 6:44)	3 (2nd, 7:52)	8	9	+1	+13
Morehead State	46/16	11/4	20/9	6/2	24/18	28 (4th, 4:26)	4 (1st, 8:01)	3	3	+19	+26
at #17/18 UConn	30/40	25/22	9/5	10/24	9/25	3 (1st, 5:46)	26 (4th, 1:17)	3	6	-4	-24
#23 Washington	34/18	21/12	17/5	6/0	12/17	12 (3rd, 2:40)	3 (2nd, 6:12)	5	7	+5	+8
at #RV/23 Miami	38/36	17/20	12/9	7/5	35/31	5 (3rd, 4:25)	7 (2nd, 8:26)	12	17	0	+5
Duke	26/32	27/17	10/3	10/10	16/23	27 (4th, 7:27)	2 (1st, 6:24)	2	2	+16	+17
at Pitt	36/14	34/8	7/4	10/2	25/25	30 (4th, 0:36)	0	0	0	+7	+30
Wake Forest	40/24	23/19	11/9	4/2	37/22	25 (4th, 9:25)	0	1	0	+19	+21
at Clemson	32/36	22/10	13/6	7/11	30/8	27 (3rd, 1:59)	2 (1st, 9:41)	2	1	+15	+17
at #23/24 North Carolina	24/28	15/10	8/9	6/8	20/16	4 (3rd, 8:48)	12 (4th, 7:44)	8	7	0	-11
Boston College	38/30	23/17	21/13	4/6	31/14	30 (4th, 0:32)	1 (1st, 4-3)	0	2	+8	+28
Pitt	28/22	22/10	9/17	4/2	38/11	21 (4th, 1:16)	4 (1st, 8:10)	1	3	+7	+19
#21/23 Syracuse	36/22	15/21	12/13	10/2	6/4	15 (4th, 3:11)	7 (1st, 0:35)	0	2	+6	+12
at #3/5 NC State	32/24	13/11	15/14	14/10	12/13	4 (1st, 7:43)	21 (2nd, 1:23)	1	6	-17	-10
#12/14 Notre Dame	34/38	16/19	13/6	7/6	16/10	13 (4th, 4:30)	0	1	0	+1	+7
at #23 Syracuse	36/34	12/12	12/14	19/11	17/20	10 (3rd, 8:21)	1 (4th, 2:36)	5	3	+3	-1
at Boston College	48/36	17/16	14/4	6/8	11/13	5 (3rd, 1:24)	10 (2nd, 5:16)	7	5	0	+2
#12/13 Virginia Tech	30/36	11/4	4/9	4/0	15/13	2 (1st, 8:32)	19 (4th, 0:40)	2	1	-13	-16
at Georgia Tech	24/30	28/14	9/9	0/2	53/16	4 (1st, 8:28)	23 (3rd, 8:28)	0	1	+15	+18
Virginia	32/38	16/18	19/10	6/2	34/15	9 (4th, 8:50)	8 (3rd, 9:32)	3	4	-6	-5
Florida State	38/34	7/13	11/3	4/6	7/2	22 (3rd, 0:32)	4 (2nd, 8:25)	5	2	+17	+15

Louisville Women's Basketball Miscellaneous Statistics

Louisville's Record When the Cardinals ...

Lead at halftime.....	19-1
Trail at halftime.....	1-5
Tied at halftime.....	3-1
Shoot better from the field than opponent.....	21-2
Shoot worse from the field than opponent.....	2-5
Shoot the same from the field as opponent.....	0-0
Shoot 50 percent or better from the field.....	9-0
Shoot below 50 percent from the field.....	14-7
Opp. shoots 50 pct. or better from the field.....	1-2
Opp. shoots below 50 pct. from the field.....	22-5
Make more than 7 3-point goals.....	3-0
Make 7 or fewer 3-point goals.....	20-7
Attempt 20 or more 3-point field goals.....	4-0
Attempt less than 20 3-point field goals.....	19-7
Make more free throws than opponent.....	16-3
Opponent makes more free throws.....	5-4
Free throws made are even.....	2-0
Outrebound their opponent.....	20-2
Outrebounded by their opponent.....	3-5
Rebounds are even.....	0-0
Bench outscores the opposing bench.....	19-3
Opponent bench outscores bench.....	3-4
Bench points are even.....	1-0
Commit fewer turnovers than opponent.....	17-5
Commit more turnovers than opponent.....	5-2
Turnovers are even.....	1-0
Lead with 5:00 remaining.....	22-2
Trail with 5:00 remaining.....	1-4
Tied with 5:00 remaining.....	0-1
Play an overtime game.....	0-0
1-4 point margins.....	1-1
5-10 point margins.....	6-3
11-20 point margins.....	9-2
21 or more point margins.....	7-1
vs. Current/Previous Top-25 teams.....	6-5
Play at home.....	14-2
Play on the road.....	7-4
Play on a neutral court.....	2-1
Score 59 points or less.....	1-0
Score 60-69 points.....	3-4
Score 70-79 points.....	10-3
Score 80-89 points.....	8-0
Score 90 points or more.....	1-0
Allow 59 points or less.....	11-0
Allow 60-69 points.....	9-0
Allow 70-79 points.....	3-5
Allow 80-89 points.....	0-2
Allow 90 points or more.....	0-0
Play after a loss.....	7-0
Score the first point.....	13-3
November.....	7-1
December.....	5-1
January.....	6-1
February.....	5-4
March.....	0-0

Points in Paint

Louisville.....	1048 (34.9)	Opp.....	842 (28.1)
-----------------	-------------	----------	------------

Points Off Turnovers

Louisville.....	638 (21.3)	Opp.....	419 (14.0)
-----------------	------------	----------	------------

Second Chance Points

Louisville.....	403 (13.4)	Opp.....	227 (7.6)
-----------------	------------	----------	-----------

Fast Break Points

Louisville.....	250 (8.3)	Opp.....	164 (5.5)
-----------------	-----------	----------	-----------

Bench Scoring

Louisville.....	717 (23.9)	Opp.....	410 (13.7)
-----------------	------------	----------	------------

Double-Figure

Scoring Games	
Jefferson.....	23
Cochran.....	19
Harris.....	16
Taylor.....	15
Curry.....	12
Rickards.....	7
Russell.....	5
Love.....	4
Istanbulluoglu.....	2
Mobley.....	1

Games Leading

UofL in Scoring	
Jefferson.....	7
Harris.....	6
Cochran.....	7
Taylor.....	6
Curry.....	5
Rickards.....	1
Love.....	1

Games Leading

UofL in Rebounding	
Cochran.....	13
Harris.....	9
Jefferson.....	5
Taylor.....	2
Love.....	2
Rickards.....	1
Istanbulluoglu.....	1
Russell.....	1
Mobley.....	1

Games Leading

UofL in Assists	
Rickards.....	14
Jefferson.....	9
Taylor.....	7
Cochran.....	5
Curry.....	3
Love.....	3
Russell.....	2
Harris.....	1

Scored Louisville's

First Points	
Who	
Cochran.....	13
Harris.....	6
Rickards.....	5
Jefferson.....	2
Taylor.....	2
Love.....	1
Curry.....	1

How

Layup.....	16
Jumper.....	9
3-Pointer.....	3
Free Throw.....	2

Double-Doubles

Harris.....	6
Cochran.....	4
Jefferson.....	1
Love.....	1
Rickards.....	1
Istanbulluoglu.....	1

Jump Balls Controlled

UofL.....	16
Opponents.....	14

Starting Lineups

W-L					
18-5	Rickards	Taylor	Jefferson	Cochran	Harris
4-1	Curry	Taylor	Jefferson	Cochran	Harris
1-1	Rickards	Russell	Istanbulluoglu	Cochran	Harris

Scoring Summary

	1st Pd.	2nd Pd.	3rd Pd.	4th Pd.	OT	Total
Louisville	561	565	572	545	0	2243
Opponents	513	407	466	490	0	1876

Louisville Women's Basketball Team Superlatives

Louisville High	Louisville Low	Statistical Category	Opponent High	Opponent Low
111 vs. Bellarmine (11/16/23)	59 vs. Washington (12/20/23)	Points	86 vs. Virginia Tech (2/18/24) 86 at UConn (12/16/23)	33 vs. Bellarmine (11/16/23)
54 vs. NC A&T (12/3/23)	26 vs. Virginia (2/25/24)	First-Half Points	48 vs. Virginia Tech (2/18/24)	9 vs. Bellarmine (11/16/23)
63 vs. Bellarmine (11/16/23)	20 at UConn (12/16/23)	Second-Half Points	46 at Syracuse (2/11/24)	19 at Pitt (1/11/24) 19 vs. NC A&T (12/3/23)
41 vs. Bellarmine (11/16/23)	18 at Ole Miss (11/29/23)	Field Goals	34 vs. Virginia Tech (2/18/24)	12 vs. Bellarmine (11/16/23)
69 vs. Morehead St. (12/13/23)	44 at Ole Miss (11/29/23)	Field Goal Attempts	73 at Syracuse (2/11/24)	39 vs. NC A&T (12/3/23)
.621 vs. Bellarmine (11/16/23)	.339 vs. Liberty (11/25/23)	FG Percentage	.654 vs. Virginia Tech (2/18/24)	.211 vs. Bellarmine (11/16/23)
12 at Georgia Tech (2/22/24)	1 at Boston College (2/15/24) 1 vs. Washington (12/20/23)	3-Point Field Goals	11 vs. DePaul (11/12/23)	1 vs. NC A&T (12/3/23) 1 at Ole Miss (11/29/23)
25 vs. NC A&T (12/3/23)	6 (3x), latest at Boston College (2/15/24)	3-Point Field Goal Att.	28 vs. DePaul (11/12/23)	11 at Ole Miss (11/29/23)
.636 vs. Wake Forest (1/14/24)	.167 at Boston College (2/15/24)	3-Point FG Percentage	.476 at NC State (2/5/24)	.091 at Ole Miss (11/29/23)
26 at Cincinnati (11/6/23)	6 vs. Washington (12/20/23) 6 vs. Gonzaga (11/26/23)	Free Throws	19 vs. Gonzaga (11/26/23)	1 vs. Bucknell (11/19/23)
36 at Ole Miss (11/29/23)	7 vs. Gonzaga (11/26/23)	Free Throw Attempts	28 at Ole Miss (11/29/23)	5 vs. Bucknell (11/19/23)
.958 at Syracuse (2/11/24)	.522 at North Carolina (1/21/24)	Free Throw Percentage	100.0 vs. Bellarmine (11/16/23)	.200 vs. Bucknell (11/19/23)
23 vs. NC A&T (12/3/23)	6 vs. Gonzaga (11/26/23)	Offensive Rebounds	20 at Syracuse (2/11/24)	0 vs. Bucknell (11/19/23)
40 vs. Florida State (2/29/24)	11 vs. Virginia Tech (2/18/24)	Defensive Rebounds	31 at NC State (2/5/24)	14 vs. Bellarmine (11/16/23)
57 vs. Florida State (2/29/24)	19 vs. Gonzaga (11/26/23)	Total Rebounds	42 at North Carolina (1/21/24)	19 vs. Bucknell (11/19/23)
26 vs. Alabama (11/24/23)	10 vs. Bucknell (11/19/23)	Fouls	27 at Ole Miss (11/29/23)	12 at Georgia Tech (2/22/24) 12 vs. Pitt (1/28/24)
23 vs. Bellarmine (11/16/23)	7 vs. Virginia Tech (2/18/24) 7 at Boston College (2/15/24)	Assists	24 at UConn (12/16/23)	3 vs. Bellarmine (11/16/23)
24 at Boston College (2/15/24)	4 vs. Virginia Tech (2/18/24)	Turnovers	31 vs. NC A&T (12/3/23)	7 vs. Florida State (2/29/24)
6 vs. NC A&T (12/3/23)	0 (6x), latest vs. Virginia Tech (2/18/24)	Blocked Shots	12 at Syracuse (2/11/24)	0 (4x), latest at Georgia Tech (2/22/24)
17 vs. Bucknell (11/19/23)	1 vs. Florida State (2/29/24)	Steals	14 vs. Notre Dame (2/8/24)	2 vs. Virginia Tech (2/18/24)

Louisville Women's Basketball Individual Superlatives

	Louisville	Opponent
Points	31 by Sydney Taylor at Georgia Tech (2/22/24)	32 by Kate Clarke vs. DePaul (11/12/23)
Field Goals Made	10 by Sydney Taylor at Georgia Tech (2/22/24)	12 (2x), latest by Liz Kitley vs. Virginia Tech (2/18/24)
Field Goals Attempted	17 (3x), latest by Cochran vs. Florida State (2/29/24)	25 by Hannah Hidalgo vs. Notre Dame (2/8/24)
Highest FG Pct. (min. 5 made)	100.0 (5-5) by Nyla Harris vs. Wake Forest (1/14/24) 100.0 (8-8) by Nina Rickards vs. Gonzaga (11/26/23) 100.0 (5-5) by Nyla Harris vs. Bellarmine (11/16/23)	100.0 (6-6) by Bella Smuda vs. Liberty (11/25/23)
3-Point Field Goals Made	7 by Sydney Taylor at Georgia Tech (2/22/24)	8 by Kate Clarke vs. DePaul (11/12/23)
3-Point Field Goals Attempted	12 by Sydney Taylor at Georgia Tech (2/22/24)	15 by Kate Clarke vs. DePaul (11/12/23)
3-Point FG Pct. (min. 3 made)	100.0 (3-3) by Merissah Russell at Miami (12/31/23)	.750 (3-4) (2x), latest by Jala Jordan at Pitt (1/11/24)
Free Throws Made	9 (2x), latest by Kiki Jefferson vs. Syracuse (2/1/24)	14 by Deja Kelly at North Carolina (1/21/24)
Free Throws Attempted	11 (2x), latest by Kiki Jefferson vs. Syracuse (2/1/24)	16 by Deja Kelly at North Carolina (1/21/24)
Free Throw Pct. (min. 6 made)	100.0 (10x), latest by Jefferson (6-6) & Harris (8-8) at Syracuse (2/11/24)	100.0 (4x), latest by Kara Dunn (6-6) at Georgia Tech (2/22/24)
Offensive Rebounds	7 by Nyla Harris vs. Alabama (11/24/23)	5 (3x), latest by Dontavia Waggoner vs. Boston College (1/25/24)
Defensive Rebounds	11 by Olivia Cochran at Georgia Tech (2/22/24)	10 (2x), latest by Liz Kitley vs. Virginia Tech (2/18/24)
Total Rebounds	15 by Nyla Harris vs. Florida State (2/29/24)	14 by Liatu King vs. Pitt (1/28/24)
Turnovers	8 by Kiki Jefferson at Syracuse (2/11/24)	8 by Nika Muhl at UConn (12/16/23)
Assists	8 by Kiki Jefferson at Clemson (1/18/24)	10 (2x), latest by Georgia Amooore vs. Virginia Tech (2/18/24)
Blocked Shots	2 (4x), latest by Olivia Cochran vs. Syracuse (2/1/24)	7 by Alyssa Ustby at North Carolina (1/21/24)
Steals	6 by Jayda Curry vs. NC A&T (12/3/23)	7 by Hannah Hidalgo vs. Notre Dame (2/8/24)
Minutes Played (regulation game)	39:24 by Nina Rickards at Ole Miss (11/29/23)	40:00 (6x), latest by Kara Dunn at Georgia Tech (2/22/24)
Minutes Played (overtime game)		



2 NYLA HARRIS

Forward | 6-2 | Sophomore
Orlando, Fla. | Lake Highland Prep

SEASON HIGHS	
Points.....	22 at Syracuse (2/11/24)
Reb.....	15 vs. Florida State (2/29/24)
Asst.....	2 (4x), latest vs. Virginia (2/25/24)
Blocks.....	2 vs. Duke (1/4/24)
Steals.....	3 (3x), latest vs. Boston College (1/25/24)
FGM.....	9 vs. Notre Dame (2/8/24)
FGA.....	13 vs. Alabama (11/24/23)
3FGM.....	
3FGA.....	1 vs. Liberty (11/25/23)
FT.....	8 (2x), latest at Syracuse (2/11/24)
FTA.....	10 vs. Syracuse (2/1/24)
Minutes.....	38 (2x), latest vs. Florida State (2/29/24)

CAREER HIGHS	
Points.....	22 at Syracuse (2/11/24)
Reb.....	15 vs. Florida State (2/29/24)
Asst.....	2 (6x), latest vs. Virginia (2/25/24)
Blocks.....	3 at Syracuse (1/29/23)
Steals.....	4 vs. Drake (3/18/23)
FGM.....	9 vs. Notre Dame (2/8/24)
FGA.....	13 vs. Alabama (11/24/23)
3FGM.....	
3FGA.....	1 vs. Liberty (11/25/23)
FT.....	8 (2x), latest at Syracuse (2/11/24)
FTA.....	10 vs. Syracuse (2/1/24)
Minutes.....	38 (2x), latest vs. Florida State (2/29/24)

MISC STATS	Season	Career
Double-Doubles.....	6	6
10-Plus Points.....	15	17
20-Plus Points.....	1	1
30-Plus Points.....	0	0
Team-High Points.....	6	7
10-Plus Rebounds.....	6	9
Team-High Rebounds.....	9	13
10-Plus Assists.....	0	0
Team-High Assists.....	1	1

2023-24 GAME-BY-GAME													
Opponent	Min	FG-A	3PT-A	FT-A	O-D-T	PF	AST	TO	STL	BLK	PTS	AVG	
at Cincinnati*	16	1-3	0-0	4-4	2-1-3	5	0	2	1	0	6	6.0	
DEPAUL*	28	4-7	0-0	5-6	5-6-11	3	0	4	1	0	13	9.5	
BELLARMINE*	16	5-5	0-0	4-4	1-2-3	0	0	0	1	0	14	11.0	
BUCKNELL*	18	4-5	0-0	2-3	2-4-6	3	1	3	1	1	10	10.8	
vs. Alabama*	34	8-13	0-0	2-2	7-1-8	5	1	4	2	0	18	12.2	
vs. Liberty*	21	0-6	0-1	0-0	3-1-4	0	0	2	0	0	0	10.2	
vs. Gonzaga*	22	2-2	0-0	0-0	0-1-1	2	0	0	2	0	4	9.3	
at Ole Miss*	21	1-4	0-0	2-2	0-3-3	4	0	1	1	0	4	8.6	
NC A&T*	18	4-6	0-0	1-2	3-2-5	2	1	1	0	0	9	8.7	
KENTUCKY*	30	6-9	0-0	1-4	4-4-8	2	1	1	3	0	13	9.1	
MOREHEAD ST.*	22	6-9	0-0	4-6	4-5-9	1	0	1	0	0	16	9.7	
at UConn*	18	2-6	0-0	3-4	1-1-2	1	0	2	1	0	7	9.5	
WASHINGTON*	23	5-7	0-0	1-1	3-1-4	3	0	1	0	0	11	9.6	
at Miami*	35	5-11	0-0	3-5	5-7-12	3	1	3	2	0	13	9.9	
DUKE*	28	1-6	0-0	3-4	0-4-4	3	1	0	1	2	5	9.5	
at Pitt*	26	4-9	0-0	0-1	3-3-6	2	2	1	1	0	8	9.4	
WAKE FOREST*	22	5-5	0-0	0-0	1-2-3	3	1	2	0	0	10	9.5	
at Clemson*	26	4-6	0-0	0-0	3-3-6	2	0	1	0	1	8	9.4	
at North Carolina*	38	7-11	0-0	2-6	1-2-3	3	2	2	3	1	16	9.7	
BOSTON COLLEGE*	21	2-2	0-0	3-4	3-3-6	4	1	0	3	0	7	9.6	
PITT*	21	4-9	0-0	0-0	2-4-6	1	0	0	0	1	8	9.5	
SYRACUSE*	30	5-7	0-0	8-10	6-8-14	1	1	3	0	0	18	9.9	
at NC State*	30	4-6	0-0	1-1	1-4-5	2	2	3	1	0	9	9.9	
NOTRE DAME*	36	9-11	0-0	1-3	4-6-10	4	0	2	0	0	19	10.3	
at Syracuse*	37	7-11	0-0	8-8	5-6-11	2	1	2	0	0	22	10.7	
at Boston College*	24	1-3	0-0	2-4	2-4-6	3	0	4	1	1	4	10.5	
VIRGINIA TECH*	34	3-5	0-0	4-5	3-2-5	0	2	0	1	0	10	10.4	
at Georgia Tech*	34	4-7	0-0	1-2	4-2-6	1	0	1	0	0	9	10.4	
VIRGINIA*	37	6-12	0-0	5-7	5-4-9	0	2	5	0	0	17	10.6	
FLORIDA STATE*	38	5-8	0-0	1-1	6-9-15	3	0	1	0	0	11	10.6	
at Notre Dame													

Sophomore Year (2023-24)

- Recorded her sixth double-double of the year with 11 points and a career-best 15 rebounds against Florida State.
- Led the team with 17 points, had nine rebounds and tied a career high with two assists against Virginia.
- Set a career high in points for the second-straight game with 22 points, 7-for-11 shooting from the floor and perfect 8-for-8 from the line, to go with 11 rebounds for her second-straight double-double on the road against No. 23 Syracuse.
- Set a career high with 19 points and was 9-for-11 from the floor with 10 rebounds for her fourth double-double of the season in the win over #12/14 Notre Dame.
- Had a career game with a career-best 14 rebounds and tied a career high with 18 points for her third double-double of the season in the win over #21/13 Syracuse. The 14 rebounds were the most by a Louisville player this season.
- Led the team with six rebounds and had eight points in the win over Pitt.
- Tallied seven points on 2-for-2 shooting with six rebounds and tied a season high with three steals against Boston College.
- Led the team with 16 points on 7-for-11 shooting and tied a season high with three steals on the road against #23/24 North Carolina.
- Was perfect from the floor (5-for-5) for the second time this season and scored 10 points in the win over Wake Forest.
- Hauled in a team-best six rebounds, tied a career high with two assists and had eight points in the road win over Pitt.
- Recorded her second double-double of the season with 13 points and tied a career high with 12 rebounds against RV/23 Miami.
- Scored in double figures with 11 points on 5-for-7 shooting in the win over #23 Washington.
- Tallied 16 points on 6-of-9 shooting with nine rebounds in the win over Morehead State.
- Scored 13 points on 6-of-9 shooting to go with a team-best eight rebounds and season-high three steals against Kentucky.
- Tied a career high with 18 points and set a career high with eight field goals made and 34 minutes played against Alabama.
- Tallied double-digit points for the third straight game with 10 points and added six rebounds against Bucknell.
- Scored in double figures for the second-straight game with 14 points against Bellarmine.
- Tallied her first career double-double with 13 points and a team-high 11 rebounds in the win over DePaul.

Freshman Year (2022-23)

- Played all 38 games in her freshman season and made 15 starts.
- Scored eight or more points in six games and made eight or more rebounds in four games.
- Set a career high with four steals, tied for the team lead with five rebounds and had eight points against No. 12 seed Drake.
- Led the team with nine rebounds in the win over Wake Forest in the ACC Quarterfinals.
- Earned her second career start and had a career-best 12 rebounds to lead the Cards in the win over North Carolina. The 12 rebounds are the most by a Louisville freshman since Olivia Cochran had 15 in the NCAA Tournament against Northwestern in 2021.
- Had a team and career-high 18 points and a career-high three blocks to go with six rebounds in the road win over Syracuse. The 18 points were the most points scored by a Louisville freshman since 2021 when Hailey Van Lith scored 24 against Wake Forest on March 5, 2021.
- Set a career high with a team-best 10 rebounds against Syracuse. She also tied a career high with two assists and added eight points.
- Led the team in rebounding with a season-high nine in the win over SIUE. She also tied a season high with two steals and two blocks.
- Scored in double figures in her second collegiate game against IUPUI. She tallied 11 points and added six rebounds.
- Made her collegiate debut against Cincinnati and scored five points and grabbed two rebounds.

High School

- A five-star prospect and is ranked No. 34 overall by espnw HoopGurlz and Prep Girls Hoops
- espnW HoopGurlz also ranks Harris as the eighth best forward in the 2022 class
- As a senior, averaged 17.8 points, 11.4 rebounds, 1.5 assists, 1.2 steals, and 1.1 blocked shots a game for a 26-5 team that won a state title and then lost to Sidwell Friends (D.C.) in the title game of the inaugural State Champions Invitational.
- As a junior, Harris helped Lake Highland Prep to the Class 4-A state title in Florida
- Named the MaxPreps Player of the Year as a sophomore after averaging 11.3 points and 6.2 rebounds per game
- Tallied 20 points, five rebounds and three blocks to lead Lake Highland Prep to a Florida 4A State Championship as a sophomore.
- Named to the 2022 Naismith High School Trophy Underclassmen Girls Watch List
- Chose Louisville over Florida State, North Carolina, North Carolina State, and Georgia Tech

Personal

- Born on May 23, 2003
- Daughter of Marlo and Robert Harris; has a younger brother and sister
- Majoring in neuroscience/psychology
- Twitter: @nylagrace
- Instagram: @thenylaharris

NYLA HARRIS CAREER STATISTICS																				
		Field Goals		3-Point		F-Throws		Rebounds				Scoring								
SEASON	TEAM	GP-GS	MIN/AVG	FG-FGA	FG%	3FG-3FGA	3FG%	FT-FTA	FT%	OFF	DEF	TOT	AVG	PF-FO	A	TO	BLK	STL	PTS	AVG
2022-23	LOU	38-15	516/13.6	67-132	.508	0-0	.000	25-49	.510	56	79	135	3.6	54-0	13	39	12	17	159	4.2
2023-24	LOU	30-30	801/26.7	124-211	.588	0-1	.000	71-99	.717	89	105	194	6.5	68-2	20	52	7	26	319	10.6
TOTAL		68-45	1317/19.4	191-343	.557	0-1	.000	96-148	.649	145	184	329	4.8	122-2	33	91	19	43	478	7.0



3 HENNIE VAN SCHAIK

Forward | 6-3 | Junior

Urk, Netherlands | Centre for Sports and Education | CSU-Bakersfield

SEASON HIGHS

Points..... 7 vs. Bucknell (11/19/23)
 Reb..... 4 vs. NC A&T (12/3/23), vs. Bellarmine (11/16/23)
 Asst..... 1 vs. Bucknell (11/19/23)
 Blocks..... 2 vs. NC A&T (12/3/23)
 Steals 3 vs. NC A&T (12/3/23)
 FGM 2 vs. NC A&T (12/3/23), vs. Bucknell (11/19/23)
 FGA 6 vs. NC A&T (12/3/23)
 3FGM 2 vs. Bucknell (11/19/23)
 3FGA 3 vs. NC A&T (12/3/23)
 FT 1 vs. Bucknell (11/19/23)
 FTA 2 vs. Bucknell (11/19/23)
 Minutes..... 16 vs. NC A&T (12/3/23)

CAREER HIGHS

Points 19 vs. CSUN (3/7/23)*
 Reb..... 14 (2x), latest vs. UC Irvine (3/8/23)*
 Asst..... 3 at UC Irvine (3/5/22)*
 Blocks..... 3 vs. CSUN (3/7/23)*
 Steals 3 (3x), latest vs. NC A&T (12/3/23)
 FGM 8 at Fresno St. (11/11/22)*
 FGA 17 vs. CSUN (3/7/23)*
 3FGM 4 vs. UC Riverside (12/29/22)*
 3FGA 8 vs. UC Riverside (12/29/22)*
 FT 7 vs. UC San Diego (2/4/23)*
 FTA 10 vs. UC San Diego (2/4/23)*
 Min..... 49 vs. UC Irvine (3/8/23)*
 * at CSU-Bakersfield

MISC STATS

	Season	Career*
Double-Doubles.....	0	4
10-Plus Points.....	0	19
20-Plus Points.....	0	0
30-Plus Points.....	0	0
Team-High Points.....	0	12
10-Plus Rebounds.....	0	5
Team-High Rebounds.....	0	14
10-Plus Assists.....	0	0
Team-High Assists.....	0	2

* at CSU-Bakersfield

2023-24 GAME-BY-GAME

Opponent	Min	FG-A	3PT-A	FT-A	O-D-T	PF	AST	TO	STL	BLK	PTS	AVG
at Cincinnati	0-0	0-0	0-0	0-0	0-0-0	1	0	0	0	0	0	0.0
DEPAUL												--DNP--
BELLARMINE	15	1-5	0-2	0-0	0-4-4	2	0	2	0	0	2	1.0
BUCKNELL	11	2-3	2-2	1-2	0-2-2	0	1	0	0	0	7	3.0
vs. Alabama												--DNP--
vs. Liberty	2	1-1	1-1	0-0	0-0-0	0	0	1	0	0	3	3.0
vs. Gonzaga	7	1-1	0-0	0-0	0-0-0	2	0	0	0	0	2	2.8
at Ole Miss												--DNP--
NC A&T	16	2-6	1-3	0-0	3-1-4	3	0	3	3	2	5	3.2
KENTUCKY												--DNP--
MOREHEAD ST.	6	1-1	0-0	0-0	0-1-1	2	0	0	0	0	2	3.0
at UConn												--DNP--
WASHINGTON												--DNP--
at Miami												--DNP--
DUKE	2	0-0	0-0	0-0	0-0-0	0	0	0	0	0	0	2.6
at Pitt	4	0-1	0-1	0-0	0-1-1	1	0	0	0	0	0	2.3
WAKE FOREST	6	0-1	0-1	0-0	0-0-0	1	0	1	1	0	0	2.1
at Clemson	2	0-1	0-1	0-0	0-0-0	1	0	0	0	0	0	1.9
at North Carolina												--DNP--
BOSTON COLLEGE	4	0-0	0-0	0-0	0-0-0	0	0	0	0	0	0	1.8
PITT	3	1-3	0-2	0-0	0-0-0	1	0	0	0	0	2	1.8
SYRACUSE												--DNP--
at NC State												--DNP--
NOTRE DAME												--DNP--
at Syracuse												--DNP--
at Boston College												--DNP--
VIRGINIA TECH												--DNP--
at Georgia Tech												--DNP--
VIRGINIA												--DNP--
FLORIDA STATE	1	0-0	0-0	0-0	0-0-0	0	0	0	0	0	0	1.6
at Notre Dame												

Louisville - Junior Year (2023-24)

- Tied a career high with three steals and added five points, four rebounds and two blocks against NC A&T.
- Had her best game in a Louisville uniform with seven points and was 2-for-2 from behind the arc against Bucknell.

van Schaik transferred to Louisville in April 2023 and will be eligible to play in the 2023-24 season.

Honors and Awards

- 2022-23 All-Big West Honorable Mention
- 2021-22 All-Big West Freshman Team
- Competed at the FIBA U20 European Championship

CSU Bakersfield - Sophomore Year (2022-23)

- Improved on her impressive freshman year with an even better sophomore campaign, becoming CSUB's best scoring threat
- Missed a chunk of the season with a few injuries but played 22 games, starting 20 of them
- Scored double-digit points in 16 of her 22 games
- Led the team with 159 rebounds and 7.2 per game, as well as 256 points and 11.6 per game
- Reset her career-high points with a game-leading 19 during CSUB's first round Big West Championship win over CSUN
- Also posted new career high 14 rebounds during the double-overtime quarterfinals win over UC Irvine
- Shot at a .370 clip while still assisting 26 times
- Was named an All-Big West honorable mention for the season.

CSU Bakersfield - Freshman Year (2021-22)

- Started in 16 of 25 games played
- Tallied a double-double (13 points, 14 rebounds) in season opener against Bethesda
- Led Bakersfield in blocks with a total of 12 on the season
- Was fourth on the team in rebounding grabbing 3.2 a contest
- Averaged 4.3 points per game
- Voted to All-Big West Freshman Team
- Played for national team over the summer and participated in the FIBA U20 European Championship

High School

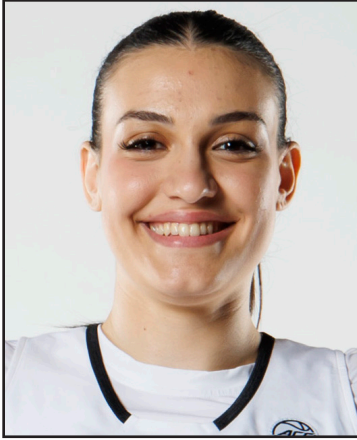
- A 2021 graduate of Centre for Sports and Education in Zwolle, Netherlands
- Played in the highest level conference in Netherlands
- Helped team win a national championship in 2018
- Also played for the Dutch national team and is still active

Personal

- Birth date is October 23, 2003
- Parents are Hermina and Edwin van Schaik
- Brother, Bart van Schaik plays professionally for Landstede Hammers Zwolle
- Major is Sociology
- Plans to play basketball professionally

HENNIE VAN SCHAIK CAREER STATISTICS

SEASON	TEAM	GP-GS	MIN/AVG	Field Goals		3-Point		F-Throws		Rebounds				Scoring						
				FG-FGA	FG%	3FG-3FGA	3FG%	FT-FTA	FT%	OFF	DEF	TOT	AVG	PF-FO	A	TO	BLK	STL	PTS	AVG
2021-22	CSUB	25-16	364/14.6	38-106	.358	11-35	.314	21-34	.618	24	56	80	3.2	46-1	10	50	12	15	108	4.3
2022-23	CSUB	22-20	667/30.3	87-235	.370	17-62	.274	65-88	.739	37	122	159	7.2	71-2	26	77	16	16	256	11.6
2023-24	LOU	14-0	81/5.8	9-23	.391	4-13	.308	1-2	.500	3	9	12	0.9	14-0	1	7	2	4	23	1.6
TOTAL FOR LOU		14-0	81/5.8	9-23	.391	4-13	.308	1-2	.500	3	9	12	0.9	14-0	1	7	2	4	23	1.6
TOTAL		61-36	1112/18.2	134-364	.368	32-110	.291	87-124	.702	64	187	251	4.1	131-3	37	134	30	35	387	6.3



11 ELIF ISTANBULLUOGLU

Forward | 6-3 | Freshman
Istanbul, Turkey | Fenerbahçe S.K.

SEASON HIGHS	
Points.....	11 vs. Boston College (1/25/24)
Reb.....	12 vs. Bellarmine (11/16/23)
Asst.....	3 (2x), latest at Georgia Tech (2/22/24)
Blocks.....	1 (5x), latest at Georgia Tech (2/22/24)
Steals.....	1 (3x), latest vs. Bellarmine (11/16/23)
FGM.....	5 vs. Boston College (1/25/24)
FGA.....	8 (2x), latest vs. Boston College (1/25/24)
3FGM.....	1 (4x), latest at Georgia Tech (2/22/24)
3FGA.....	5 vs. NC A&T (12/3/23)
FT.....	4 vs. DePaul (11/12/23)
FTA.....	4 vs. DePaul (11/12/23), at Cincinnati (11/6/23)
Minutes.....	21 at Cincinnati (11/6/23)

MISC STATS	Season	Career
Double-Doubles.....	1	1
10-Plus Points.....	2	2
20-Plus Points.....	0	0
30-Plus Points.....	0	0
Team-High Points.....	0	0
10-Plus Rebounds.....	1	1
Team-High Rebounds.....	1	1
10-Plus Assists.....	0	0
Team-High Assists.....	0	0

2023-24 GAME-BY-GAME

Opponent	Min	FG-A	3PT-A	FT-A	O-D-T	PF	AST	TO	STL	BLK	PTS	AVG
at Cincinnati	21	2-3	0-0	3-4	1-2-3	3	0	3	1	1	7	7.0
DEPAUL	20	0-3	0-2	4-4	0-3-3	1	0	2	1	0	4	5.5
BELLARMINE	17	4-6	0-1	2-3	6-6-12	0	3	1	1	0	10	7.0
BUCKNELL	19	1-4	0-0	0-0	1-1-2	2	2	4	0	0	2	5.8
vs. Alabama	17	2-6	0-1	0-0	2-1-3	0	0	1	0	0	4	5.4
vs. Liberty	9	0-2	0-0	0-0	0-0-0	0	0	0	0	0	0	4.5
vs. Gonzaga	7	0-1	0-0	0-0	0-0-0	1	0	2	0	0	0	3.9
at Ole Miss	8	0-0	0-0	1-2	0-1-1	1	1	1	0	0	1	3.5
NC A&T	18	0-8	0-5	2-2	1-0-1	2	1	0	0	0	2	3.3
KENTUCKY	13	0-2	0-1	0-0	1-1-2	2	1	0	0	1	0	3.0
MOREHEAD ST.	19	2-3	0-0	0-0	0-5-5	0	0	1	0	0	4	3.1
at UConn	6	0-1	0-1	1-2	0-0-0	1	0	1	0	0	1	2.9
WASHINGTON	11	0-1	0-0	0-0	2-2-4	2	1	3	0	0	0	2.7
at Miami	7	0-0	0-0	0-0	0-0-0	2	0	0	0	0	0	2.5
DUKE	11	0-1	0-0	0-0	0-1-1	0	0	2	0	0	0	2.3
at Pitt	16	2-4	1-1	0-0	0-3-3	2	0	1	0	0	5	2.5
WAKE FOREST	20	4-5	1-1	0-1	3-1-4	2	0	1	0	0	9	2.9
at Clemson	14	2-3	1-1	0-2	0-1-1	0	0	2	0	0	5	3.0
at North Carolina	11	1-4	0-1	0-0	0-1-1	1	0	0	0	1	2	2.9
BOSTON COLLEGE	20	5-8	0-0	1-2	3-1-4	1	0	1	0	0	11	3.4
PITT	16	2-3	0-1	0-0	0-2-2	0	1	0	0	0	4	3.4
SYRACUSE	4	0-0	0-0	0-0	0-0-0	0	0	0	0	0	0	3.2
at NC State	6	0-1	0-0	0-0	0-0-0	1	0	0	0	0	0	3.1
NOTRE DAME	8	1-1	0-0	0-0	1-1-2	1	0	0	0	1	2	3.0
at Syracuse	11	0-2	0-0	0-0	1-2-3	0	0	0	0	0	0	2.9
at Boston College	10	0-2	0-0	0-0	0-2-2	0	0	1	0	0	0	2.8
VIRGINIA TECH	12	0-1	0-1	0-0	1-2-3	0	0	0	0	0	0	2.7
at Georgia Tech*	20	1-2	1-1	0-0	0-3-3	0	3	0	1	1	3	2.7
VIRGINIA*	11	1-3	0-1	0-0	1-0-1	1	0	1	0	0	2	2.7
FLORIDA STATE	7	0-1	0-0	0-0	2-2-4	1	0	1	0	0	0	2.6
at Notre Dame												

Freshman Year (2023-24)

- Earned her first career start in the road win over Georgia Tech.
- Tallied a career high 11 points on 5-for-8 shooting with four rebounds against Boston College.
- Scored nine points, was 4-for-5 from the floor and 1-for-1 from behind the arc with four rebounds in the win over Wake.
- Tallied her first double-double in just her third collegiate game with 10 points and 12 rebounds in the win over Bellarmine. She was the first freshman to record a double-double since 2021.
- Made her collegiate debut against Cincinnati on Nov. 6 and tallied seven points, three rebounds, one block and one steal.

Prep

- Played with Turkey at the 2023 FIBA U18 and U20 Championships this summer
- At the U18 Championships, she helped Turkey reach the quarterfinals and finished eighth
- She averaged 11.0 points and 10.7 rebounds per game, which was second on the team in scoring and she led the team in rebounds
- At the U20 Championships, Turkey finished eighth and she averaged double figures with 10.7 points per game during the tournament
- She played in the most recent FIBA EuroLeague season with Fenerbahçe S.K.
- Fenerbahçe S.K. won the EuroLeague for the first time in team history

Personal

- Hails from Istanbul, Turkey
- Daughter of Serkan and Asli Istanbulluoglu
- Parents both played basketball professionally in Turkey
- Has one older sister, Sevval
- Sevval played four years collegiately at Siena

ELIF ISTANBULLUOGLU CAREER STATISTICS

SEASON	TEAM	GP-GS	MIN/AVG	Field Goals		3-Point		F-Throws		Rebounds				Scoring						
				FG-FGA	FG%	3FG-3FGA	3FG%	FT-FTA	FT%	OFF	DEF	TOT	AVG	PF-FO	A	TO	BLK	STL	PTS	AVG
2023-24	LOU	30-2	387/12.9	30-81	.370	4-19	.211	14-22	.636	26	44	70	2.3	27-0	13	29	5	4	78	2.6
TOTAL		30-2	387/12.9	30-81	.370	4-19	.211	14-22	.636	26	44	70	2.3	27-0	13	29	5	4	78	2.6



23 ALEXIA MOBLEY

Guard | 5-7 | Redshirt Sophomore
Reynoldsburg, Ohio | Reynoldsburg

SEASON HIGHS

Points..... 12 vs. Bellarmine (11/16/23)
 Reb 7 vs. NC A&T (12/3/23)
 Asst..... 1 (4x), latest vs. NC A&T (12/3/23)
 Blocks 1 (3x), latest vs. Pitt (1/28/24)
 Steals 3 vs. NC A&T (12/3/23)
 FGM 4 vs. Bellarmine (11/16/23)
 FGA 4 vs. Bellarmine (11/16/23), at Cincinnati (11/6/23)
 3FGM.....
 3FGA.....
 FT 4 vs. Bellarmine (11/16/23)
 FTA 4 vs. Bellarmine (11/16/23)
 Minutes..... 16 vs. NC A&T (12/3/23)

CAREER HIGHS

Points..... 12 vs. Bellarmine (11/16/23)
 Reb 7 vs. NC A&T (12/3/23)
 Asst..... 1 (4x), latest vs. NC A&T (12/3/23)
 Blocks 1 (3x), latest vs. NC A&T (12/3/23)
 Steals 3 vs. NC A&T (12/3/23)
 FGM 4 vs. Bellarmine (11/16/23)
 FGA 4 vs. Bellarmine (11/16/23), at Cincinnati (11/6/23)
 3FGM.....
 3FGA.....
 FT 4 vs. Bellarmine (11/16/23)
 FTA 4 vs. Bellarmine (11/16/23)
 Minutes..... 16 vs. NC A&T (12/3/23)

MISC STATS

	Season	Career
Double-Doubles.....	0	0
10-Plus Points.....	1	1
20-Plus Points.....	0	0
30-Plus Points.....	0	0
Team-High Points.....	0	0
10-Plus Rebounds.....	0	0
Team-High Rebounds.....	1	1
10-Plus Assists.....	0	0
Team-High Assists.....	0	0

2023-24 GAME-BY-GAME

Opponent	Min	FG-A	3PT-A	FT-A	O-D-T	PF	AST	TO	STL	BLK	PTS	AVG
at Cincinnati	9	1-4	0-0	2-2	2-4-6	1	0	1	0	1	4	4.0
DEPAUL	2	0-0	0-0	0-0	0-0-0	0	0	0	0	0	0	2.0
BELLARMINE	13	4-4	0-0	4-4	1-3-4	1	1	0	2	0	12	5.3
BUCKNELL	12	0-0	0-0	1-2	2-1-3	2	1	2	1	0	1	4.3
vs. Alabama	4	0-0	0-0	0-0	0-1-1	1	1	0	0	0	0	3.4
vs. Liberty	1	0-0	0-0	0-0	0-0-0	0	0	0	0	0	0	2.8
vs. Gonzaga	7	0-1	0-0	0-0	1-0-1	0	1	0	0	0	0	2.4
at Ole Miss												--DNP--
NC A&T	16	2-2	0-0	0-0	2-5-7	0	1	0	3	1	4	2.6
KENTUCKY	1	0-0	0-0	0-0	0-0-0	0	0	1	0	0	0	2.3
MOREHEAD ST.	15	1-3	0-0	0-0	1-2-3	4	0	1	0	0	2	2.3
at UConn	1	1-2	0-0	0-2	3-1-4	0	0	0	0	0	2	2.3
WASHINGTON												--DNP--
at Miami	1	0-0	0-0	0-0	0-0-0	0	0	0	0	0	0	2.1
DUKE	4	0-1	0-0	0-0	0-1-1	0	0	0	0	0	0	1.9
at Pitt	4	0-0	0-0	0-0	0-0-0	0	0	0	0	0	0	1.8
WAKE FOREST	9	1-2	0-0	0-0	2-3-5	1	1	0	0	0	2	1.8
at Clemson	4	1-1	0-0	0-1	0-1-1	0	0	0	0	0	2	1.8
at North Carolina	2	0-0	0-0	0-0	0-0-0	0	0	0	0	0	0	1.7
BOSTON COLLEGE	5	1-1	0-0	1-2	0-1-1	1	0	1	0	0	3	1.8
PITT	9	2-2	0-0	1-2	1-2-3	1	0	0	1	1	5	1.9
SYRACUSE												--DNP--
at NC State												--DNP--
NOTRE DAME												--DNP--
at Syracuse												--DNP--
at Boston College	4	1-1	0-0	0-0	1-0-1	2	0	0	0	0	2	2.0
VIRGINIA TECH												--DNP--
at Georgia Tech												--DNP--
VIRGINIA	1	0-0	0-0	0-0	0-0-0	0	0	0	0	0	0	1.9
FLORIDA STATE	1	0-0	0-0	0-0	0-0-0	0	0	0	0	0	0	1.8
at Notre Dame												

Redshirt-Sophomore Year (2023-24)

- Had a team-best five rebounds in the home win over Wake Forest.
- Talled a career-best seven rebounds and three steals to go with four points and a block against NC A&T.
- Scored in double figures for the first time in her career with a career-best 12 points on 4-for-4 shooting in the win over Bellarmine.
- Talled a career-best four points and six rebounds in just nine minutes of action against Cincinnati.

Redshirt-Freshman Year (2022-23)

- Played in seven games during her redshirt freshman season.
- Scored her first collegiate points in the ACC Tournament against Wake Forest.
- Made her collegiate debut in the road win over Pitt.

High School

- Ranked a four-star player and No.31 overall as the seventh best wing in the Class of 2022 by ESPNW Hoop Guriz
- Named to the 2020 OPSWA Division II First-Team Ohio
- Averaged a double-double in all three years in high school
- Reached 1,000 career rebounds in a 61-40 win over Central Crossing
- Recorded 12 points and 14 rebounds in Division I regional semifinal vs. Dublin Coffman
- As a junior, averaged 12 points, 14 rebounds, 3 assists, 3 steals, and 2 blocks per game to lead Reynoldsburg to an 18-4 record and district championship
- As a sophomore at Whitehall-Yearling, named First-Team All-State and MSL-Ohio Player of the Year after averaging 17.9 points and 20.7 rebounds, and three blocks in 21 games
- Ranked fourth nationally in rebounding with 20.7 per game as a sophomore, recorded double-digit rebounds in 13 of 21 games, including a school season record 402 rebounds and single-game record 29 boards
- Appeared in all games as a freshman for Reynoldsburg
- Was Reynoldsburg High School's valedictorian, finishing with the 4.2 GPA and graduated a year early in May 2021

Personal

- Daughter of Cynthia and Alvin Mobley, has one brother Josiah
- Her father Alvin played basketball overseas after collegiate career at VCU and her mother played basketball at Stetson
- Born on Jan. 26, 2004
- Majoring in sports administration

ALEXIA MOBLEY CAREER STATISTICS

SEASON	TEAM	GP-GS	MIN/AVG	Field Goals		3-Point		F-Throws		Rebounds				Scoring						
				FG-FGA	FG%	3FG-3FGA	3FG%	FT-FTA	FT%	OFF	DEF	TOT	AVG	PF-FO	A	TO	BLK	STL	PTS	AVG
2022-23	LOU	7-0	12/1.8	1-2	.500	0-0	.000	0-0	.000	0	1	1	0.1	1-0	0	1	1	0	2	0.3
2023-24	LOU	22-0	122/5.6	15-24	.625	0-0	.000	9-15	.600	16	25	41	1.9	14-0	6	6	3	7	39	1.8
TOTAL		29-0	135/4.6	16-26	.615	0-0	.000	9-15	.600	16	26	42	1.4	15-0	6	7	4	7	41	1.4

2023-24 Louisville Women's Basketball Box Scores

Official Basketball Box Score - Final
Louisville at Cincinnati
11/06/23 Fifth Third Arena, Cincinnati
Cincinnati vs. Louisville
Game Time: 6:00 PM
Game Duration: 2:03
Attendance: 1,725

Box score for Louisville - 77 vs Cincinnati - 99. Includes player stats for Nyla Harris, Olivia Cochran, Sydney Taylor, Kiki Jefferson, Jayda Curry, Elif Istanbulioglu, Merisash Russell, Nina Rickards, Alexia Mobley, Elyia Love, and Hennie van Schaik. Shooting by period and technical fouls are also listed.

Box score for Cincinnati - 99 vs Louisville - 77. Includes player stats for Jillian Hayes, Malea Williams, Destiny Thomas, Braylyn Milton, Mya Jackson, Brianna Byars, A'neal Jackson, Reagan Jackson, Aicha Dia, Nia Clark, Ta'Zhen Jenkins, Delaney Snyder, and Abby Holtman. Shooting by period and technical fouls are also listed.

Summary statistics for the Louisville vs Cincinnati game, including biggest lead, best scoring run, lead changes, times tied, and time with lead.

Official Basketball Box Score - Final
DePaul at Louisville
11/22/23 KYC Yum! Center, Louisville
2023-24 Women's Basketball
Game Time: 4:02 PM
Game Duration: 1:56
Attendance: 7,456

Box score for DePaul - 74 vs Louisville - 81. Includes player stats for Jorie Allen, Kaitlyn Gilbert, Anaya Peoples, Michelle Sidor, Kate Clarke, Brynn Masikewich, Maeve McErlane, Sumer Lee, and Charlee Chiazari. Shooting by period and technical fouls are also listed.

Box score for Louisville - 81 vs DePaul - 74. Includes player stats for Nyla Harris, Olivia Cochran, Sydney Taylor, Kiki Jefferson, Jayda Curry, Elif Istanbulioglu, Merisash Russell, Elyia Love, Nina Rickards, and Alexia Mobley. Shooting by period and technical fouls are also listed.

Summary statistics for the Louisville vs DePaul game, including biggest lead, best scoring run, lead changes, times tied, and time with lead.

Official Basketball Box Score - Final
Bellarmine at Louisville
11/16/23 KYC Yum! Center, Louisville
2023-24 Women's Basketball
Game Time: 7:02 PM
Game Duration: 1:47
Attendance: 7,486

Box score for Bellarmine - 33 vs Louisville - 111. Includes player stats for Paetlynn Gray, Cam Browning, Myah Brown, Hope Sivori, Hayley Harrison, Claire Knies, Mackenzie Keelin, Jayla Butler, Ashlee Harris, Bralee Trice, Lucy Robertson, and Aly Avrach. Shooting by period and technical fouls are also listed.

Box score for Louisville - 111 vs Bellarmine - 33. Includes player stats for Nyla Harris, Olivia Cochran, Sydney Taylor, Kiki Jefferson, Jayda Curry, Elif Istanbulioglu, Merisash Russell, Nina Rickards, Alexia Mobley, Elyia Love, and Hennie van Schaik. Shooting by period and technical fouls are also listed.

Summary statistics for the Louisville vs Bellarmine game, including biggest lead, best scoring run, lead changes, times tied, and time with lead.

Official Basketball Box Score - Final
Bucknell at Louisville
11/16/23 KYC Yum! Center, Louisville, KY
2023-24 Women's Basketball
Game Time: 4:02 PM
Game Duration: 1:47
Attendance: 7,383

Box score for Bucknell - 44 vs Louisville - 77. Includes player stats for Emma Theodorsson, Isabella King, Ashley Soflikaning, Caroline Dingler, Blake Matthews, Nicole Davis, Ashley O'Connor, Kaylee Reinbeau, Julie Kulesza, Sophia Sabino, and Rosie Scognamiglio. Shooting by period and technical fouls are also listed.

Box score for Louisville - 77 vs Bucknell - 44. Includes player stats for Nyla Harris, Olivia Cochran, Sydney Taylor, Kiki Jefferson, Jayda Curry, Elyia Love, Nina Rickards, Elif Istanbulioglu, Alexia Mobley, and Hennie van Schaik. Shooting by period and technical fouls are also listed.

Summary statistics for the Louisville vs Bucknell game, including biggest lead, best scoring run, lead changes, times tied, and time with lead.

2023-24 Louisville Women's Basketball Box Scores

Official Basketball Box Score - Final Louisville at Alabama, Game Time: 11:00 AM, Game Duration: 2:13, Officials: Scott Yarborough, DeMoya Pugh, Leah Lane

Box score for Louisville - 73, including player stats for Nyla Harris, Olivia Cochran, Sydney Taylor, Kiki Jefferson, Asia Boone, Emma Hess, Elisabeth Agaidotiti, Claudia Acin, Emily Howard, Ella Wigal, and Alexia Mobley.

Shooting By Period for Louisville - 73, showing FG, 3PT, and FT percentages for each quarter.

Box score for Liberty - 63, including player stats for Jordan Bailey, Bella Smuda, Jordan Hodges, Asia Boone, Emma Hess, Elisabeth Agaidotiti, Claudia Acin, Emily Howard, Ella Wigal, and Brooke Moore.

Shooting By Period for Liberty - 63, showing FG, 3PT, and FT percentages for each quarter.

Box score for Alabama - 78, including player stats for Essence Cody, Loyal McQueen, Sarah Ashlee Barker, Jessica Timmons, Aaliyah Nye, JeAnna Cunningham, Karly Weathers, and Meg Newman.

Box score for Louisville - 72, including player stats for Nyla Harris, Olivia Cochran, Sydney Taylor, Kiki Jefferson, Nina Rickards, Elif Istanbuluoglu, Merisash Russell, Jayda Curry, Eylla Love, and Alexia Mobley.

Shooting By Period for Louisville - 72, showing FG, 3PT, and FT percentages for each quarter.

Box score for Alabama - 78, including player stats for Essence Cody, Loyal McQueen, Sarah Ashlee Barker, Jessica Timmons, Aaliyah Nye, JeAnna Cunningham, Karly Weathers, and Meg Newman.

Shooting By Period for Alabama - 78, showing FG, 3PT, and FT percentages for each quarter.

Box score for Louisville - 72, including player stats for Nyla Harris, Olivia Cochran, Sydney Taylor, Kiki Jefferson, Nina Rickards, Elif Istanbuluoglu, Merisash Russell, Jayda Curry, Eylla Love, and Alexia Mobley.

Summary statistics for Louisville vs Alabama, including Biggest lead, Best Scoring Run, Lead Changes, Times Tied, and Time with Lead.

Summary statistics for Louisville vs Liberty, including Biggest lead, Best Scoring Run, Lead Changes, Times Tied, and Time with Lead.

Summary statistics for Louisville vs Alabama, including Biggest lead, Best Scoring Run, Lead Changes, Times Tied, and Time with Lead.

Summary statistics for Louisville vs Liberty, including Biggest lead, Best Scoring Run, Lead Changes, Times Tied, and Time with Lead.

Summary statistics for Louisville vs Alabama, including Biggest lead, Best Scoring Run, Lead Changes, Times Tied, and Time with Lead.

Official Basketball Box Score - Final Gonzaga at Louisville, Game Time: 12:45 PM, Game Duration: 2:05, Officials: Scott Yarborough, Ashley Glass, Courtney Robinson

Box score for Gonzaga - 70, including player stats for Eliza Hollingsworth, Yvonne Ejim, Kayleigh Truong, Kaylynn Truong, Brynna Maxwell, Maud Huijbers, Cali Stokes, and Esther Little.

Shooting By Period for Gonzaga - 70, showing FG, 3PT, and FT percentages for each quarter.

Official Basketball Box Score - Final Louisville at Ole Miss, Game Time: 8:15 PM, Game Duration: 2:25, Attendance: 2,694, Officials: Pulen Spurlock-Welsh, Joseph Vaszy, Natasha Caym

Box score for Louisville - 64, including player stats for Nyla Harris, Marquasha Davis, Snudisa Collins, Sydney Taylor, Kharissa Richardson, Kennedy Todd-Williams, Marja Aviljas, Tyla Singleton, Rita Igbokwe, Rhema Collins, Zakiya Stephenson, Mariyah Noel, and Ayanna Thompson.

Shooting By Period for Louisville - 64, showing FG, 3PT, and FT percentages for each quarter.

Box score for Louisville - 64, including player stats for Nyla Harris, Marquasha Davis, Snudisa Collins, Sydney Taylor, Kharissa Richardson, Kennedy Todd-Williams, Marja Aviljas, Tyla Singleton, Rita Igbokwe, Rhema Collins, Zakiya Stephenson, Mariyah Noel, and Ayanna Thompson.

Box score for Louisville - 81, including player stats for Nyla Harris, Olivia Cochran, Sydney Taylor, Kiki Jefferson, Nina Rickards, Elif Istanbuluoglu, Eylla Love, Jayda Curry, Alexia Mobley, Merisash Russell, and Hennie van Schaik.

Shooting By Period for Louisville - 81, showing FG, 3PT, and FT percentages for each quarter.

Box score for Louisville - 64, including player stats for Nyla Harris, Marquasha Davis, Snudisa Collins, Sydney Taylor, Kharissa Richardson, Kennedy Todd-Williams, Marja Aviljas, Tyla Singleton, Rita Igbokwe, Rhema Collins, Zakiya Stephenson, Mariyah Noel, and Ayanna Thompson.

Shooting By Period for Louisville - 64, showing FG, 3PT, and FT percentages for each quarter.

Box score for Louisville - 64, including player stats for Nyla Harris, Marquasha Davis, Snudisa Collins, Sydney Taylor, Kharissa Richardson, Kennedy Todd-Williams, Marja Aviljas, Tyla Singleton, Rita Igbokwe, Rhema Collins, Zakiya Stephenson, Mariyah Noel, and Ayanna Thompson.

Summary statistics for Louisville vs Alabama, including Biggest lead, Best Scoring Run, Lead Changes, Times Tied, and Time with Lead.

Summary statistics for Louisville vs Liberty, including Biggest lead, Best Scoring Run, Lead Changes, Times Tied, and Time with Lead.

Summary statistics for Louisville vs Alabama, including Biggest lead, Best Scoring Run, Lead Changes, Times Tied, and Time with Lead.

Summary statistics for Louisville vs Liberty, including Biggest lead, Best Scoring Run, Lead Changes, Times Tied, and Time with Lead.

Summary statistics for Louisville vs Alabama, including Biggest lead, Best Scoring Run, Lead Changes, Times Tied, and Time with Lead.

2023-24 Louisville Women's Basketball Box Scores



Official Basketball Box Score - Final
N.C. A&T at Louisville
12/03/23 KFC Yum! Center, Louisville
2023-24 Women's Basketball

Game Time: 12:02 PM
Game Duration: 1:59
Attendance: 7,618



Official Basketball Box Score - Final
Kentucky at Louisville
12/03/23 KFC Yum! Center, Louisville
2023-24 Women's Basketball

Game Time: 2:02 PM
Game Duration: 1:55
Attendance: 11,291

Officials: John Capolino, Kayla Mabry, Aigraene Carr

Box score for N.C. A&T - 40. Includes player stats (NO. Name, Min, FG, 3P, FT, Rebounds, Fouls, TP, AS, TO, ST, Blocks, +/-) and team totals. Shooting by period and technical fouls are also listed.

Box score for Kentucky - 61. Includes player stats (NO. Name, Min, FG, 3P, FT, Rebounds, Fouls, TP, AS, TO, ST, Blocks, +/-) and team totals. Shooting by period and technical fouls are also listed.

Box score for Louisville - 80. Includes player stats (NO. Name, Min, FG, 3P, FT, Rebounds, Fouls, TP, AS, TO, ST, Blocks, +/-) and team totals. Shooting by period and technical fouls are also listed.

Box score for Louisville - 73. Includes player stats (NO. Name, Min, FG, 3P, FT, Rebounds, Fouls, TP, AS, TO, ST, Blocks, +/-) and team totals. Shooting by period and technical fouls are also listed.

Summary statistics for NCA and LOU. Includes Biggest lead, Best Scoring Run, Lead Changes, Times Tied, Time with Lead, Points from Turnovers, Paint, Second Chance, Fast Breaks, and Bench.

Summary statistics for UKY and LOU. Includes Biggest lead, Best Scoring Run, Lead Changes, Times Tied, Time with Lead, Points from Turnovers, Paint, Second Chance, Fast Breaks, and Bench.



Official Basketball Box Score - Final
Morehead St. at Louisville
12/13/23 KFC Yum! Center, Louisville
2023-24 Women's Basketball

Game Time: 4:02 PM
Game Duration: 1:43
Attendance: 7,086



Official Basketball Box Score - Final
Notre Dame at UConn
01/27/24 Harry A. Gampel Pavilion, Storrs, Conn.
2023-24 Women's Basketball

Game Time: 8:00 PM
Game Duration: 1:55
Attendance: 10,299

Officials: Denise Brooks, Mark Berger, Leah Lurie

Box score for Morehead St. - 48. Includes player stats (NO. Name, Min, FG, 3P, FT, Rebounds, Fouls, TP, AS, TO, ST, Blocks, +/-) and team totals. Shooting by period and technical fouls are also listed.

Box score for Notre Dame - 82. Includes player stats (NO. Name, Min, FG, 3P, FT, Rebounds, Fouls, TP, AS, TO, ST, Blocks, +/-) and team totals. Shooting by period and technical fouls are also listed.

Box score for Louisville - 74. Includes player stats (NO. Name, Min, FG, 3P, FT, Rebounds, Fouls, TP, AS, TO, ST, Blocks, +/-) and team totals. Shooting by period and technical fouls are also listed.

Box score for UConn - 67. Includes player stats (NO. Name, Min, FG, 3P, FT, Rebounds, Fouls, TP, AS, TO, ST, Blocks, +/-) and team totals. Shooting by period and technical fouls are also listed.

Summary statistics for MSU and LOU. Includes Biggest lead, Best Scoring Run, Lead Changes, Times Tied, Time with Lead, Points from Turnovers, Paint, Second Chance, Fast Breaks, and Bench.

Summary statistics for UND and UCN. Includes Biggest lead, Best Scoring Run, Lead Changes, Times Tied, Time with Lead, Points from Turnovers, Paint, Second Chance, Fast Breaks, and Bench.

2023-24 Louisville Women's Basketball Box Scores



Official Basketball Box Score - Final
Washington at Louisville
12/02/23 KFC Yum! Center, Louisville
2023-24 Women's Basketball

Game Time: 7:02 PM
Game Duration: 1:47
Attendance: 8,018

Officials: Billy Smith, Fatou Cissoko-Stephens, Tyler Trimble

Washington - 51

Box score table for Washington vs Louisville, including player stats and team totals.

Technical Fouls: Daniels 3, 8, 01

Shooting By Period table for Washington vs Louisville.



Official Basketball Box Score - Final
Louisville at Miami (FL)
12/31/23 Hescro Center, Coral Gables, Fla.
2023-24 Women's Basketball

Game Time: 4:00 PM
Game Duration: 2:01
Attendance: 2,120

Officials: Joseph Vaszily, Karen Preato, Ed Sidlasky

Louisville - 77

Box score table for Louisville vs Miami (FL), including player stats and team totals.

Technical Fouls: NONE

Shooting By Period table for Louisville vs Miami (FL).

Dead Ball Rebounds: 3, 0

Louisville - 59

Box score table for Louisville vs Washington, including player stats and team totals.

Technical Fouls: NONE

Shooting By Period table for Louisville vs Washington.

Dead Ball Rebounds: 2, 0

Miami (FL) - 72

Box score table for Miami (FL) vs Louisville, including player stats and team totals.

Technical Fouls: NONE

Shooting By Period table for Miami (FL) vs Louisville.

Dead Ball Rebounds: 2, 0

Summary statistics table for Washington vs Louisville game.

Summary statistics table for Louisville vs Miami (FL) game.



Official Basketball Box Score - Final
Duke at Louisville
01/04/24 KFC Yum! Center, Louisville
2023-24 Women's Basketball

Game Time: 8:02 PM
Game Duration: 1:53
Attendance: 7,789

Officials: Mj Forsberg, Jeffrey Smith, Brandon Erlertine

Duke - 44

Box score table for Duke vs Louisville, including player stats and team totals.

Technical Fouls: NONE

Shooting By Period table for Duke vs Louisville.

Dead Ball Rebounds: 4, 0

Louisville - 61

Box score table for Louisville vs Duke, including player stats and team totals.

Technical Fouls: NONE

Shooting By Period table for Louisville vs Duke.

Dead Ball Rebounds: 3, 0

Summary statistics table for Louisville vs Duke game.

Official Basketball Box Score - Final
Louisville at Pitt
01/11/24 Petersen Events Center, Pittsburgh
Pitt vs. Louisville

Game Time: 6:00 PM
Game Duration: 1:48
Attendance: 688

Officials: Rod Creech, Ryan Durham, Linda Miles

Louisville - 74

Box score table for Louisville vs Pitt, including player stats and team totals.

Technical Fouls: NONE

Shooting By Period table for Louisville vs Pitt.

Dead Ball Rebounds: 1, 0

Pitt - 44

Box score table for Pitt vs Louisville, including player stats and team totals.

Technical Fouls: NONE

Shooting By Period table for Pitt vs Louisville.

Dead Ball Rebounds: 1, 0

Summary statistics table for Pitt vs Louisville game.

2023-24 Louisville Women's Basketball Box Scores



Official Basketball Box Score - Final
Wake Forest at Clemson
01/14/24 KFC Yum! Center, Louisville
2023-24 Women's Basketball

Game Time: 2:02 PM
Game Duration: 1:51
Attendance: 6,901



Official Basketball Box Score - Final
Louisville at Clemson
01/18/24 Littlejohn Coliseum, Clemson
2023-24 Women's Basketball

Game Time: 7:00 PM
Game Duration: 2:02
Attendance: 868

Officials: Ed Salsbery, Erika Herrman, Alexis Porco

Officials: Katie Lukanich, Talisa Green, Krystle Apellaniz

Wake Forest - 62
Record: 4-13 (0-5)
Table with columns: NO. Name, Min, FG, 3P, FT, Rebounds, Fouls, TP, AS, TO, ST, Blocks, +/-, Shooting By Period

Louisville - 81
Record: 16-2 (5-0)
Table with columns: NO. Name, Min, FG, 3P, FT, Rebounds, Fouls, TP, AS, TO, ST, Blocks, +/-, Shooting By Period

Louisville - 83
Record: 15-2 (4-0)
Table with columns: NO. Name, Min, FG, 3P, FT, Rebounds, Fouls, TP, AS, TO, ST, Blocks, +/-, Shooting By Period

Clemson - 64
Record: 8-10 (1-5)
Table with columns: NO. Name, Min, FG, 3P, FT, Rebounds, Fouls, TP, AS, TO, ST, Blocks, +/-, Shooting By Period

Summary statistics for Wake Forest vs Louisville (Game 31) including Biggest lead, Best Scoring Run, Lead Changes, Times Tied, Time with Lead, Points from Turnovers, Paint, Second Chance, Fast Breaks, Bench, and Period by Period Scoring.

Summary statistics for Louisville vs Clemson (Game 31) including Biggest lead, Best Scoring Run, Lead Changes, Times Tied, Time with Lead, Points from Turnovers, Paint, Second Chance, Fast Breaks, Bench, and Period by Period Scoring.



Official Basketball Box Score - Final
Louisville at North Carolina
01/21/24 Carmichael Arena, Chapel Hill
2023-24 Women's Basketball

Game Time: 2:00 PM
Game Duration: 2:05
Attendance: 6,073



Official Basketball Box Score - Final
Boston College at Louisville
01/25/24 KFC Yum! Center, Louisville
2023-24 Women's Basketball

Game Time: 7:02 PM
Game Duration: 1:52
Attendance: 7,600

Officials: Dee Kantner, Puatari Spurlock-Welsh, Rod Creech

Officials: Angelica Suffman, Ashley Goss, Josh Hbwel

Louisville - 68
Record: 16-3 (5-1)
Table with columns: NO. Name, Min, FG, 3P, FT, Rebounds, Fouls, TP, AS, TO, ST, Blocks, +/-, Shooting By Period

Boston College - 60
Record: 11-10 (3-5)
Table with columns: NO. Name, Min, FG, 3P, FT, Rebounds, Fouls, TP, AS, TO, ST, Blocks, +/-, Shooting By Period

North Carolina - 79
Record: 14-5 (6-1)
Table with columns: NO. Name, Min, FG, 3P, FT, Rebounds, Fouls, TP, AS, TO, ST, Blocks, +/-, Shooting By Period

Louisville - 88
Record: 17-3 (6-1)
Table with columns: NO. Name, Min, FG, 3P, FT, Rebounds, Fouls, TP, AS, TO, ST, Blocks, +/-, Shooting By Period

Summary statistics for Louisville vs North Carolina (Game 31) including Biggest lead, Best Scoring Run, Lead Changes, Times Tied, Time with Lead, Points from Turnovers, Paint, Second Chance, Fast Breaks, Bench, and Period by Period Scoring.

Summary statistics for Louisville vs Boston College (Game 31) including Biggest lead, Best Scoring Run, Lead Changes, Times Tied, Time with Lead, Points from Turnovers, Paint, Second Chance, Fast Breaks, Bench, and Period by Period Scoring.

2023-24 Louisville Women's Basketball Box Scores



Official Basketball Box Score - Final
Pittsburgh at Louisville
02/05/24 KFC Yum! Center, Louisville
2023-24 Women's Basketball

Game Time: 2:02 PM
Game Duration: 1:50
Attendance: 9,462



Official Basketball Box Score - Final
Syracuse at Louisville
02/01/24 KFC Yum! Center, Louisville
2023-24 Women's Basketball

Game Time: 7:02 PM
Game Duration: 2:04
Attendance: 8,254

Officials: Meadow Overstreet, John Capolino, Jules Galzin

Officials: Bruce Morris, Kate Lukanich, Safi Esho

Box score for Pittsburgh - 58 vs Louisville - 77. Includes player stats, shooting percentages, and technical fouls.

Box score for Syracuse - 69 vs Louisville - 81. Includes player stats, shooting percentages, and technical fouls.

Box score for Louisville - 77 vs Louisville - 81. Includes player stats, shooting percentages, and technical fouls.

Box score for Louisville - 81 vs Louisville - 81. Includes player stats, shooting percentages, and technical fouls.

Summary statistics for Louisville - 77 vs Louisville - 81, including biggest lead, lead changes, and time with lead.

Summary statistics for Louisville - 81 vs Louisville - 81, including biggest lead, lead changes, and time with lead.



Official Basketball Box Score - Final
Louisville at NC State
02/05/24 Reynolds Coliseum, Raleigh
2023-24 Women's Basketball

Game Time: 7:00 PM
Game Duration: 2:41
Attendance: 5,500



Official Basketball Box Score - Final
Notre Dame at Louisville
02/05/24 KFC Yum! Center, Louisville
2023-24 Women's Basketball

Game Time: 6:03 PM
Game Duration: 2:07
Attendance: 9,417

Officials: Dee Kantner, Joseph Vaszly, Denise Brooks

Officials: Tara Cruise, Keren Presto, Mark Resch

Box score for Louisville - 67 vs NC State - 77. Includes player stats, shooting percentages, and technical fouls.

Box score for Notre Dame - 66 vs Louisville - 73. Includes player stats, shooting percentages, and technical fouls.

Box score for NC State - 77 vs Louisville - 73. Includes player stats, shooting percentages, and technical fouls.

Box score for Louisville - 73 vs Louisville - 73. Includes player stats, shooting percentages, and technical fouls.

Summary statistics for NC State - 77 vs Louisville - 73, including biggest lead, lead changes, and time with lead.

Summary statistics for Louisville - 73 vs Louisville - 73, including biggest lead, lead changes, and time with lead.

2023-24 Louisville Women's Basketball Box Scores



Official Basketball Box Score - Final
Louisville at Syracuse
02/11/24 JMA Wireless Dome, Syracuse
2023-24 Women's Basketball

Game Time: 12:00 PM
Game Duration: 2:06
Attendance: 3,912



Official Basketball Box Score - Final
Louisville at Boston College
02/15/24 Conte Forum, Chestnut Hill, Mass
2023-24 Women's Basketball

Game Time: 7:00 PM
Game Duration: 2:06
Attendance: 937

Box score for Louisville - 72 vs Syracuse - 73. Includes player stats for Nyla Harris, Olivia Cochran, Sydney Taylor, Kiki Jefferson, Nina Rickards, Merissah Russell, Elif Istanbuluoglu, and Jayda Curry.

Shooting By Period and Team statistics for Louisville - 72. Includes FG, 3P, FT, and GMFG percentages.

Box score for Louisville - 69 vs Boston College - 67. Includes player stats for Nyla Harris, Olivia Cochran, Sydney Taylor, Kiki Jefferson, Nina Rickards, Merissah Russell, Jayda Curry, Elif Istanbuluoglu, and Alexia Mobley.

Shooting By Period and Team statistics for Louisville - 69. Includes FG, 3P, FT, and GMFG percentages.

Box score for Syracuse - 73 vs Louisville - 72. Includes player stats for Sanaia Wilson, Kyra Wood, Dyaisha Fair, Georgia Woolley, Alaina Rice, Kenned Perkins, Alyssa Latham, Lili Krasovec, and Sophie Burrows.

Shooting By Period and Team statistics for Syracuse - 73. Includes FG, 3P, FT, and GMFG percentages.

Box score for Boston College - 67 vs Louisville - 69. Includes player stats for Teysa Sicberry, Kayleigh Ivey, Andrea Daley, Dontavia Waggoner, Tyana Todd, Nene Ndisaye, JaKaya Thompson, JoJo Lacey, Lili Krasovec, and Kayla Lezama.

Shooting By Period and Team statistics for Boston College - 67. Includes FG, 3P, FT, and GMFG percentages.

Summary statistics for Louisville vs Syracuse: Biggest lead, Best Scoring Run, Lead Changes, Times Tied, Time with Lead.

Summary statistics for Louisville vs Boston College: Biggest lead, Best Scoring Run, Lead Changes, Times Tied, Time with Lead.



Official Basketball Box Score - Final
Virginia Tech at Louisville
02/18/24 KFC Yum Center, Louisville
2023-24 Women's Basketball

Game Time: 2:05 PM
Game Duration: 1:44
Attendance: 12,249



Official Basketball Box Score - Final
Louisville at Georgia Tech
02/22/24 McCamish Pavilion, Atlanta
Georgia Tech vs Louisville

Game Time: 6:00 PM
Game Duration: 1:52
Attendance: 1,554

Box score for Virginia Tech - 86 vs Louisville - 70. Includes player stats for Olivia Summiel, Elizabeth Kitley, Georgia Amroore, Melikia Ekh, Carleigh King, Carleigh Wenzel, Clara Strack, and Carys Baker.

Shooting By Period and Team statistics for Virginia Tech - 86. Includes FG, 3P, FT, and GMFG percentages.

Box score for Louisville - 80 vs Georgia Tech - 62. Includes player stats for Nyla Harris, Elif Istanbuluoglu, Olivia Cochran, Merissah Russell, Nina Rickards, Jayda Curry, Sydney Taylor, Kiki Jefferson, and Elyia Love.

Shooting By Period and Team statistics for Louisville - 80. Includes FG, 3P, FT, and GMFG percentages.

Box score for Louisville - 70 vs Virginia Tech - 86. Includes player stats for Nyla Harris, Olivia Cochran, Sydney Taylor, Kiki Jefferson, Nina Rickards, Elif Istanbuluoglu, Merissah Russell, Jayda Curry, and Elyia Love.

Shooting By Period and Team statistics for Louisville - 70. Includes FG, 3P, FT, and GMFG percentages.

Box score for Georgia Tech - 62 vs Louisville - 80. Includes player stats for Kayla Blackshear, Tonea Morgan, Sydney Johnson, Ines Nugiero, Kara Dunn, Rusne Augustinaite, and Aixa Wone Aranz.

Shooting By Period and Team statistics for Georgia Tech - 62. Includes FG, 3P, FT, and GMFG percentages.

Summary statistics for Louisville vs Virginia Tech: Biggest lead, Best Scoring Run, Lead Changes, Times Tied, Time with Lead.

Summary statistics for Louisville vs Georgia Tech: Biggest lead, Best Scoring Run, Lead Changes, Times Tied, Time with Lead.

2023-24 Louisville Women's Basketball Box Scores



Official Basketball Box Score - Final
Virginia at Louisville
02/25/24 KY Yum! Center, Louisville
2023-24 Women's Basketball

Game Time: 12:06 PM
Game Duration: 1:58
Attendance: 10,305

Officials: El Sklasy, Kryste Apollantz, Ashley Goss

Box score table for Virginia - 73. Columns include NO. Name, Min, FG, 3P, FT, Rebounds, Fouls, TP, AS, TO, ST, Blocks, +/-, and Shooting By Period.

Shooting By Period summary for Virginia. Columns include 1st FG%, 3PT%, FT%, 2nd FG%, 3PT%, FT%, 3rd FG%, 3PT%, FT%, 4th FG%, 3PT%, FT%, GMFG%, 3PT%, FT%, and Dead Ball Rebounds.

Box score table for Louisville - 68. Columns include NO. Name, Min, FG, 3P, FT, Rebounds, Fouls, TP, AS, TO, ST, Blocks, +/-, and Shooting By Period.

Shooting By Period summary for Louisville. Columns include 1st FG%, 3PT%, FT%, 2nd FG%, 3PT%, FT%, 3rd FG%, 3PT%, FT%, 4th FG%, 3PT%, FT%, GMFG%, 3PT%, FT%, and Dead Ball Rebounds.

Summary statistics table for Louisville vs Virginia. Includes UVA and LOU for Biggest lead, Best Scoring Run, Lead Changes, Times Tied, and Time with Lead.

Summary statistics table for Louisville vs Virginia. Includes Points from Turnovers, Paint, Second Chance, Fast Breaks, and Bench.

Summary statistics table for Louisville vs Virginia. Includes Period by Period Scoring for 1st, 2nd, 3rd, 4th, and TOT.



Official Basketball Box Score - Final
Florida St. at Louisville
02/25/24 KY Yum! Center, Louisville
2023-24 Women's Basketball

Game Time: 8:02 PM
Game Duration: 1:48
Attendance: 7,892

Officials: MJ Forsberg, Bryan Brunette, Teresa Stuck

Box score table for Florida St. - 55. Columns include NO. Name, Min, FG, 3P, FT, Rebounds, Fouls, TP, AS, TO, ST, Blocks, +/-, and Shooting By Period.

Shooting By Period summary for Florida St. Columns include 1st FG%, 3PT%, FT%, 2nd FG%, 3PT%, FT%, 3rd FG%, 3PT%, FT%, 4th FG%, 3PT%, FT%, GMFG%, 3PT%, FT%, and Dead Ball Rebounds.

Box score table for Louisville - 70. Columns include NO. Name, Min, FG, 3P, FT, Rebounds, Fouls, TP, AS, TO, ST, Blocks, +/-, and Shooting By Period.

Shooting By Period summary for Louisville. Columns include 1st FG%, 3PT%, FT%, 2nd FG%, 3PT%, FT%, 3rd FG%, 3PT%, FT%, 4th FG%, 3PT%, FT%, GMFG%, 3PT%, FT%, and Dead Ball Rebounds.

Summary statistics table for Louisville vs Florida St. Includes FSU and LOU for Biggest lead, Best Scoring Run, Lead Changes, Times Tied, and Time with Lead.

Summary statistics table for Louisville vs Florida St. Includes Points from Turnovers, Paint, Second Chance, Fast Breaks, and Bench.

Summary statistics table for Louisville vs Florida St. Includes Period by Period Scoring for 1st, 2nd, 3rd, 4th, and TOT.

2023-24 Louisville Cardinals - Photo Roster



1 Sydney Taylor
G | 5-9 | Gr.
Long Island, N.Y.
(UMass)



2 Nyla Harris
F | 6-2 | So.
Orlando, Fla.
(Lake Highland Prep)



3 Hennie van Schaik
F | 6-3 | Jr.
Urk, Netherlands
(CSU-Bakersfield)



10 Eseosa Imafidon
C | 6-5 | Rs.
Benin-City, Nigeria
(Proctor Academy)



11 Elif Istanbuluoglu
F | 6-3 | Fr.
Istanbul, Turkey
(Fenerbahçe S.K)



12 Kiki Jefferson
G | 6-1 | Gr.
Lancaster, Pa.
(James Madison)



13 Merissah Russell
G | 6-0 | Sr.
Ottawa, Ontario
(Cairine Wilson)



15 Nina Rickards
G | 5-9 | Gr.
Queens, N.Y.
(Florida)



23 Alexia Mobley
F | 6-2 | R-So.
Reynoldsburg, Ohio
(Reynoldsburg)



24 Eylia Love
G | 6-1 | Sr.
Kansas City, Kan.
(Georgia Tech)



30 Jayda Curry
G | 5-6 | Jr.
Corona, Calif.
(Cal)



44 Olivia Cochran
F | 6-3 | Sr.
Columbus, Ga.
(Carver)

Coaching Staff



Jeff Walz
Head Coach



Stephanie Norman
Associate Head Coach



Jonneshia Pineda
Associate Coach



Shay Robinson
Associate Coach



Macey Ford
Director of Operations



2023-24 Louisville Women's Basketball Combined Team Statistics All games

Game Records

Record	Overall	Home	Away	Neutral
ALL GAMES	23-7	14-2	7-4	2-1
CONFERENCE	12-5	7-2	5-3	0-0
NON-CONFERENCE	11-2	7-0	2-1	2-1

Score by Periods

Team	1st	2nd	3rd	4th	OT	TOT
Louisville	561	565	572	545	0	2243
Opponents	513	407	466	490	0	1876

Team Box Score

No.	Player	Total			3-Point			F-Throw		Rebounds				Other Stats									
		GP-GS	MIN	AVG	FG-FGA	FG%	3FG-3FGA	3FG%	FT-FTA	FT%	OFF	DEF	TOT	AVG	PF	DQ	A	TO	BLK	STL	PTS	AVG	
12	JEFFERSON, Kiki	30-28	754:49	25.2	130-274	.474	25-75	.333	110-123	.894	34	102	136	4.5	55	0	75	63	7	33	395	13.2	
1	TAYLOR, Sydney	30-28	735:40	24.5	113-299	.378	53-162	.327	48-66	.727	20	65	85	2.8	71	0	62	57	2	27	327	10.9	
44	COCHRAN, Olivia	30-30	808:31	27.0	129-258	.500	0-5	.000	67-95	.705	61	135	196	6.5	82	3	42	53	15	41	325	10.8	
2	HARRIS, Nyla	30-30	801:26	26.7	124-211	.588	0-1	.000	71-99	.717	89	105	194	6.5	68	2	20	52	7	26	319	10.6	
30	CURRY, Jayda	30-5	639:55	21.3	94-233	.403	39-98	.398	39-50	.780	12	37	49	1.6	59	1	60	50	0	22	266	8.9	
15	RICKARDS, Nina	30-25	693:17	23.1	83-159	.522	0-1	.000	45-64	.703	31	76	107	3.6	45	0	77	58	3	36	211	7.0	
13	RUSSELL, Merissah	29-2	482:44	16.6	50-130	.385	16-58	.276	25-34	.735	27	43	70	2.4	41	0	28	39	3	27	141	4.9	
24	LOVE, Eylia	30-0	493:51	16.5	44-97	.454	4-11	.364	27-36	.750	36	47	83	2.8	51	0	27	32	1	29	119	4.0	
11	ISTANBULLUOGLU, Elif	30-2	386:44	12.9	30-81	.370	4-19	.211	14-22	.636	26	44	70	2.3	27	0	13	29	5	4	78	2.6	
23	MOBLEY, Alexia	22-0	122:13	5.6	15-24	.625	0-0	.000	9-15	.600	16	25	41	1.9	14	0	6	6	3	7	39	1.8	
3	VAN SCHAIK, Hennie	14-0	80:51	5.8	9-23	.391	4-13	.308	1-2	.500	3	9	12	0.9	14	0	1	7	2	4	23	1.6	
Team											35	43	78									10	
Total		30	6000		821-1789	.459	145-443	.327	456-606	.752	390	731	1121	37.4	527	6	411	456	48	256	2243	74.8	
Opponents		30	6000		692-1661	.417	168-558	.301	324-463	.700	291	639	930	31.0	575	13	354	559	95	210	1876	62.5	

Team Statistics

	LOU	OPP
Scoring	2243	1876
Points per game	74.8	62.5
Scoring margin	+12.2	-
Field goals-att	821-1789	692-1661
Field goal pct	.459	.417
3 point fg-att	145-443	168-558
3-point FG pct	.327	.301
3-pt FG made per game	4.8	5.6
Free throws-att	456-606	324-463
Free throw pct	.752	.700
F-Throws made per game	15.2	10.8
Rebounds	1121	930
Rebounds per game	37.4	31.0
Rebounding margin	+6.4	-
Assists	411	354
Assists per game	13.7	11.8
Turnovers	456	559
Turnovers per game	15.2	18.6
Turnover margin	+3.4	-
Assist/turnover ratio	0.9	0.6
Steals	256	210
Steals per game	8.5	7.0
Blocks	48	95
Blocks per game	1.6	3.2
Winning streak	1	-
Home win streak	1	-
Attendance	138243	39279
Home games-Avg/Game	16-8640	11-3571
Neutral site-Avg/Game	-	3-223

Team Results

Date	Opponent	Score	Att.
11/06/2023	at Cincinnati	W 77-59	1725
11/12/2023	DePaul	W 81-74	7456
11/16/2023	Bellarmine	W 111-33	7486
11/19/2023	Bucknell	W 77-44	7383
11/24/2023	vs Alabama	L 73-78	215
11/25/2023	vs Liberty	W 72-63	256
11/26/2023	vs Gonzaga	W 81-70	197
11/29/2023	at Ole Miss	W 64-58	2694
12/03/2023	N.C. A&T	W 80-40	7618
12/10/2023	Kentucky	W 73-61	11291
12/13/2023	Morehead St.	W 74-48	7086
12/16/2023	at UConn	L 62-86	13028
12/20/2023	Washington	W 59-51	8018
12/31/2023	at Miami (FL)	W 77-72	2120
01/04/2024	Duke	W 61-44	7789
01/11/2024	at Pittsburgh	W 74-44	868
01/14/2024	Wake Forest	W 83-62	8901
01/18/2024	at Clemson	W 81-64	868
01/21/2024	at North Carolina	L 68-79	6073
01/25/2024	Boston College	W 88-60	7606
01/28/2024	Pittsburgh	W 77-58	9452
02/01/2024	Syracuse	W 81-69	8254
02/05/2024	at NC State	L 67-77	5500
02/08/2024	Notre Dame	W 73-66	9417
02/11/2024	at Syracuse	L 72-73	3912
02/15/2024	at Boston College	W 69-67	937
02/18/2024	Virginia Tech	L 70-86	12249
02/22/2024	at Georgia Tech	W 80-62	1554
02/25/2024	Virginia	L 68-73	10305
02/29/2024	Florida St.	W 70-55	7932



2023-24 Louisville Women's Basketball Combined Team Statistics In Conference games

Game Records

Record	Overall	Home	Away	Neutral
ALL GAMES	12-5	7-2	5-3	0-0
CONFERENCE	12-5	7-2	5-3	0-0
NON-CONFERENCE	0-0	0-0	0-0	0-0

Score by Periods

Team	1st	2nd	3rd	4th	OT	TOT
Louisville	308	319	338	294	0	1259
Opponents	287	262	262	300	0	1111

Team Box Score

No.	Player	Overall			Total		3-Point		F-Throw		Rebounds				Other				PTS	AVG		
		GP-GS	MIN	AVG	FG-FGA	FG%	3FG-3FGA	3FG%	FT-FTA	FT%	OFF	DEF	TOT	AVG	PF	DQ	A	TO			BLK	STL
12	JEFFERSON, Kiki	17-15	450:53	26.5	74-167	.443	16-51	.314	71-79	.899	19	62	81	4.8	30	0	49	43	3	15	235	13.8
2	HARRIS, Nyla	17-17	516:44	30.4	76-129	.589	0-0	.000	42-61	.689	54	73	127	7.5	37	0	16	30	6	13	194	11.4
1	TAYLOR, Sydney	17-15	421:51	24.8	64-161	.398	33-89	.371	30-42	.714	9	39	48	2.8	47	0	38	30	2	16	191	11.2
44	COCHRAN, Olivia	17-17	489:38	28.8	70-144	.486	0-2	.000	31-49	.633	36	79	115	6.8	43	1	28	36	8	20	171	10.1
30	CURRY, Jayda	17-0	367:52	21.6	59-137	.431	26-58	.448	26-32	.813	7	17	24	1.4	43	1	33	29	0	9	170	10.0
15	RICKARDS, Nina	17-17	382:54	22.5	49-92	.533	0-0	.000	22-32	.688	13	39	52	3.1	29	0	39	30	1	19	120	7.1
13	RUSSELL, Merissah	17-2	275:55	16.2	29-70	.414	8-28	.286	10-13	.769	14	27	41	2.4	21	0	14	22	1	18	76	4.5
11	ISTANBULLUOGLU, Elif	17-2	203:09	12.0	19-41	.463	4-8	.500	1-5	.200	12	22	34	2.0	12	0	4	10	3	1	43	2.5
24	LOVE, Eyllia	17-0	228:25	13.4	19-40	.475	0-5	.000	5-10	.500	15	23	38	2.2	25	0	16	22	1	10	43	2.5
23	MOBLEY, Alexia	11-0	41:27	3.8	6-8	.750	0-0	.000	2-5	.400	4	8	12	1.1	5	0	1	1	1	1	14	1.3
3	VAN SCHAİK, Hennie	7-0	21:12	3.0	1-6	.167	0-5	.000	0-0	.000	0	1	1	0.1	4	0	0	1	0	1	2	0.3
Team											25	23	48					4				
Total		17	3400		466-995	.468	87-246	.354	240-328	.732	208	413	621	36.5	296	2	238	258	26	123	1259	74.1
Opponents		17	3400		412-988	.417	94-319	.295	193-269	.717	194	368	562	33.1	317	7	202	284	62	130	1111	65.4

Team Statistics

	LOU	OPP
Scoring	1259	1111
Points per game	74.1	65.4
Scoring margin	+8.7	-
Field goals-att	466-995	412-988
Field goal pct	.468	.417
3 point fg-att	87-246	94-319
3-point FG pct	.354	.295
3-pt FG made per game	5.1	5.5
Free throws-att	240-328	193-269
Free throw pct	.732	.717
F-Throws made per game	14.1	11.4
Rebounds	621	562
Rebounds per game	36.5	33.1
Rebounding margin	+3.5	-
Assists	238	202
Assists per game	14.0	11.9
Turnovers	258	284
Turnovers per game	15.2	16.7
Turnover margin	+1.5	-
Assist/turnover ratio	0.9	0.7
Steals	123	130
Steals per game	7.2	7.6
Blocks	26	62
Blocks per game	1.5	3.6
Winning streak	1	-
Home win streak	1	-
Attendance	81905	21832
Home games-Avg/Game	9-9101	8-2729
Neutral site-Avg/Game	-	0-0

Team Results

Date	Opponent		Score	Att.
12/31/2023	at Miami (FL)	W	77-72	2120
01/04/2024	Duke	W	61-44	7789
01/11/2024	at Pittsburgh	W	74-44	868
01/14/2024	Wake Forest	W	83-62	8901
01/18/2024	at Clemson	W	81-64	868
01/21/2024	at North Carolina	L	68-79	6073
01/25/2024	Boston College	W	88-60	7606
01/28/2024	Pittsburgh	W	77-58	9452
02/01/2024	Syracuse	W	81-69	8254
02/05/2024	at NC State	L	67-77	5500
02/08/2024	Notre Dame	W	73-66	9417
02/11/2024	at Syracuse	L	72-73	3912
02/15/2024	at Boston College	W	69-67	937
02/18/2024	Virginia Tech	L	70-86	12249
02/22/2024	at Georgia Tech	W	80-62	1554
02/25/2024	Virginia	L	68-73	10305
02/29/2024	Florida St.	W	70-55	7932