



Officials: Tiara Cruse, Bryan Brunette, Brandon Enterline

Notre Dame - 89

Record: 17-2 (8-0)

NO.	Name	F	Min	FG	3P	FT	Rebounds			Fouls		TP	AS	TO	ST	Blocks		+/-
				M-A	M-A	M-A	OR	DR	TOT	PF	FD					BS	BA	
20	Liatu King	F	25:22	4-8	0-0	0-0	1	4	5	3	2	8	2	2	2	1	1	10
21	Maddy Westbeld	F	19:39	6-7	2-3	0-0	3	2	5	4	1	14	1	0	0	0	0	13
3	Hannah Hidalgo	G	33:33	9-23	2-4	3-4	5	0	5	3	2	23	3	2	5	0	0	12
5	Olivia Miles	G	31:21	6-11	2-7	2-2	0	2	2	2	2	16	3	3	2	1	0	26
11	Sonia Citron	G	28:47	3-9	0-3	3-3	2	7	9	1	2	9	6	2	2	1	1	35
8	Cassandre Prosper		20:53	2-3	0-0	0-1	1	2	3	1	1	4	0	3	1	0	0	7
32	Liza Karlen		24:18	3-4	1-1	2-2	0	4	4	1	3	9	0	2	0	1	0	12
13	Kate Koval		11:57	0-1	0-0	2-2	1	2	3	0	2	2	3	1	0	2	0	15
2	Emma Risch		02:51	2-2	0-0	0-0	0	1	1	1	0	4	0	2	0	0	0	0
25	Sarah Cernugel		01:19	0-0	0-0	0-0	0	0	0	1	0	0	0	0	0	0	0	0
Team							2	3	5			0		0				
<b>Totals</b>				35-68	7-18	12-14	15	27	42	17	15	89	18	17	12	6	2	26

Technical Fouls::NONE

Shooting By Period		
1 <sup>st</sup> FG%	8-17	47.1%
3PT%	1-3	33.3%
FT%	0-1	0%
2 <sup>nd</sup> FG%	8-17	47.1%
3PT%	4-9	44.4%
FT%	4-4	100%
3 <sup>rd</sup> FG%	12-19	63.2%
3PT%	1-3	33.3%
FT%	2-3	66.7%
4 <sup>th</sup> FG%	7-15	46.7%
3PT%	1-3	33.3%
FT%	6-6	100%
GM FG%	35-68	51.5%
3PT%	7-18	38.9%
FT%	12-14	85.7%

Dead Ball Rebounds: 1, 2

Boston College - 63

Record: 12-9 (3-5)

NO.	Name	F	Min	FG	3P	FT	Rebounds			Fouls		TP	AS	TO	ST	Blocks		+/-
				M-A	M-A	M-A	OR	DR	TOT	PF	FD					BS	BA	
32	Teya Sidberry	F	26:56	2-10	0-2	1-2	2	3	5	1	1	5	1	1	1	0	1	-15
2	Kaylah Ivey	G	19:52	2-5	2-5	0-0	0	1	1	1	1	6	1	2	0	0	0	-24
21	Andrea Daley	G	22:52	1-8	0-2	5-6	4	6	10	0	5	7	1	3	1	0	0	-11
24	Dontavia Waggoner	G	23:56	2-5	0-0	2-2	3	0	3	2	3	6	0	5	1	0	0	-27
30	T' yana Todd	G	35:56	7-15	2-6	2-2	1	0	1	2	1	18	1	3	2	0	1	-21
33	Savannah Samuel		20:46	2-5	0-0	3-4	2	2	4	5	2	7	0	1	2	0	1	-3
10	Nene Ndiaye		23:43	4-9	0-2	0-0	2	2	4	1	1	8	3	0	1	1	2	-19
13	Tatum Greene		10:17	0-3	0-1	0-0	1	0	1	1	1	0	0	1	1	1	0	-3
23	Kennedi Jackson		09:32	2-6	0-0	2-2	1	1	2	0	1	6	0	1	1	0	1	-8
0	Athena Tomlinson		06:10	0-2	0-2	0-0	0	1	1	2	1	0	0	1	0	0	0	1
Team							2	3	5			0		2				
<b>Totals</b>				22-68	4-20	15-18	18	19	37	15	17	63	7	20	10	2	6	-26

Technical Fouls::NONE

Shooting By Period		
1 <sup>st</sup> FG%	6-15	40.0%
3PT%	1-4	25.0%
FT%	5-6	83.3%
2 <sup>nd</sup> FG%	5-18	27.8%
3PT%	2-10	20.0%
FT%	1-2	50%
3 <sup>rd</sup> FG%	8-16	50.0%
3PT%	0-2	0.0%
FT%	1-2	50%
4 <sup>th</sup> FG%	3-19	15.8%
3PT%	1-4	25.0%
FT%	8-8	100%
GM FG%	22-68	32.4%
3PT%	4-20	20.0%
FT%	15-18	83.3%

Dead Ball Rebounds: 2, 0

	UND	BCE
Biggest lead	28 (4 <sup>th</sup> 2:34)	3 (1 <sup>st</sup> 9:42)
Best Scoring Run	13(4 <sup>th</sup> 2:34)	4(1 <sup>st</sup> 5:58)
Lead Changes	7	
Times Tied	3	
Time with Lead	32:00	06:15

Points from	UND	BCE
Turnovers	20	10
Paint	52	24
Second Chance	22	16
Fast Breaks	15	6
Bench	19	21

	Period by Period Scoring				
	1st	2nd	3rd	4th	TOT
UND	17	24	27	21	89
BCE	18	13	17	15	63



**Period 1**

**Quarter Starters:**

<b>BCE</b>	2 Ivey K	21 Daley A	24 Waggoner D	30 Todd T	32 Sidberry T
<b>UND</b>	3 Hidalgo H	5 Miles O	11 Citron S	20 King L	21 Westbeld M

Game Time	BCE	Score	Diff	UND
10:00	21 DALEY A jumpball won			21 WESTBELD M jumpball lost
09:42	2 IVEY K 3pt FG , jump shot made (3)	<b>3-0</b>	<b>3</b>	
09:30				3 HIDALGO H 2pt FG outside the paint, jump shot missed
09:26				21 WESTBELD M offensive rebound (1)
09:19		<b>3-2</b>	<b>1</b>	20 KING L 2pt FG second chance in the paint, layup made (2)
09:19				3 HIDALGO H assist (1)
09:09	30 TODD T 2pt FG in the paint, driving layup missed			
09:06				5 MILES O defensive rebound (1)
09:03				11 CITRON S turnover lost ball (1)
08:40	24 WAGGONER D turnover lost ball (1)			3 HIDALGO H steal (1)
08:35				3 HIDALGO H 2pt FG from turnover in the paint, layup missed
08:31	21 DALEY A defensive rebound (1)			
08:23	24 WAGGONER D foul drawn (1)			5 MILES O foul shooting (1 - 1)
08:23	24 WAGGONER D free throw 1 - 2 made (1)	<b>4-2</b>	<b>2</b>	
08:23	24 WAGGONER D free throw 2 - 2 made (2)	<b>5-2</b>	<b>3</b>	
08:01		<b>5-4</b>	<b>1</b>	21 WESTBELD M 2pt FG in the paint, jump shot made (2)
07:57	21 DALEY A turnover bad pass (1)			3 HIDALGO H steal (2)
07:53				3 HIDALGO H 2pt FG from turnover in the paint, layup missed
07:49				3 HIDALGO H offensive rebound (1)
07:49		<b>5-6</b>	<b>-1</b>	3 HIDALGO H 2pt FG from turnover second chance in the paint, tip-in layup made (2)
07:37	2 IVEY K 3pt FG , jump shot missed			
07:32				21 WESTBELD M defensive rebound (2)
07:24		<b>5-8</b>	<b>-3</b>	20 KING L 2pt FG in the paint, layup made (4)
07:24				5 MILES O assist (1)
07:01	21 DALEY A substitution out			
07:01	33 SAMUEL S substitution in			
07:01	turnover sec 5 (3)			
07:01				11 CITRON S substitution out
07:01				8 PROSPER C substitution in
06:45	33 SAMUEL S steal (1)			5 MILES O turnover lost ball (1)
06:41	30 TODD T 2pt FG from turnover in the paint, layup blocked			
06:41				5 MILES O block (1)
06:41	offensive rebound (2)			
06:39	30 TODD T 2pt FG from turnover second chance outside the paint, jump shot made (2)	<b>7-8</b>	<b>-1</b>	
06:39	2 IVEY K assist (1)			
06:17				20 KING L 2pt FG outside the paint, pull up jump shot missed
06:14	32 SIDBERRY T defensive rebound (1)			
06:14	24 WAGGONER D foul drawn (2)			20 KING L foul personal (1 - 2)
05:58	32 SIDBERRY T 2pt FG in the paint, layup made (2)	<b>9-8</b>	<b>1</b>	
05:48	24 WAGGONER D foul drawn (3)			5 MILES O foul offensive (2 - 3)
05:48				5 MILES O turnover offensive (2)
05:48				5 MILES O substitution out



**Notre Dame at Boston College**

01/23/25 Conte Forum, Chestnut Hill, Mass.  
2024-25 Women's Basketball

**Game Time:** 7:00 PM  
**Game Duration:** 1:44  
**Attendance:** 2,879

**Officials:** Tiara Cruse, Bryan Brunette, Brandon Enterline

Game Time	BCE	Score	Diff	UND
05:48				20 KING L substitution out
05:48				11 CITRON S substitution in
05:48				32 KARLEN L substitution in
05:36	32 SIDBERRY T 2pt FG from turnover outside the paint, jump shot missed			
05:32				8 PROSPER C defensive rebound (1)
05:21	32 SIDBERRY T foul personal (1 - 1)			32 KARLEN L foul drawn (1)
05:19				11 CITRON S 3pt FG , jump shot missed
05:17				offensive rebound (6)
05:17	33 SAMUEL S foul personal (1 - 2)			21 WESTBELD M foul drawn (1)
05:06		<b>9-10</b>	<b>-1</b>	8 PROSPER C 2pt FG second chance in the paint, layup made (2)
05:06				11 CITRON S assist (1)
05:06	24 WAGGONER D foul shooting (1 - 3)			8 PROSPER C foul drawn (1)
05:06				8 PROSPER C free throw 1 - 1 missed
05:03	defensive rebound (4)			
05:02	24 WAGGONER D substitution out			
05:02	21 DALEY A substitution in			
04:50	33 SAMUEL S foul drawn (1)			8 PROSPER C foul shooting (1 - 4)
04:50	Timeout media			
04:50	2 IVEY K substitution out			
04:50	10 NDIAYE N substitution in			
04:50	33 SAMUEL S free throw 1 - 2 made (1)	<b>10-10</b>	<b>0</b>	
04:50	33 SAMUEL S free throw 2 - 2 made (2)	<b>11-10</b>	<b>1</b>	
04:31		<b>11-12</b>	<b>-1</b>	32 KARLEN L 2pt FG in the paint, layup made (2)
04:31				11 CITRON S assist (2)
04:15	30 TODD T 2pt FG outside the paint, pull up jump shot made (4)	<b>13-12</b>	<b>1</b>	
04:06				3 HIDALGO H 2pt FG outside the paint, step back jump shot missed
04:02	32 SIDBERRY T defensive rebound (2)			
03:44	10 NDIAYE N 3pt FG , jump shot missed			
03:41	33 SAMUEL S offensive rebound (1)			
03:40	33 SAMUEL S 2pt FG second chance in the paint, layup missed			
03:36	10 NDIAYE N offensive rebound (1)			
03:36	10 NDIAYE N 2pt FG second chance in the paint, tip-in layup made (2)	<b>15-12</b>	<b>3</b>	
03:10		<b>15-15</b>	<b>0</b>	3 HIDALGO H 3pt FG , jump shot made (5)
02:56	32 SIDBERRY T 2pt FG in the paint, driving layup made (4)	<b>17-15</b>	<b>2</b>	
02:45		<b>17-17</b>	<b>0</b>	32 KARLEN L 2pt FG in the paint, layup made (4)
02:45				21 WESTBELD M assist (1)
02:13	21 DALEY A 2pt FG in the paint, layup missed			
02:13	offensive dead ball rebound (1)			
02:13	turnover shot clock (4)			
02:13				21 WESTBELD M substitution out
02:13				32 KARLEN L substitution out
02:13				13 KOVAL K substitution in
02:13				20 KING L substitution in
02:03				8 PROSPER C turnover bad pass (1)
01:42	32 SIDBERRY T 2pt FG from turnover in the paint, turnaround jump shot missed			
01:37				20 KING L defensive rebound (1)



Official Basketball Play by Play - 1st Period

### Notre Dame at Boston College

01/23/25 Conte Forum, Chestnut Hill, Mass.  
2024-25 Women's Basketball

Game Time: 7:00 PM

Game Duration: 1:44

Attendance: 2,879

Officials: Tiara Cruse, Bryan Brunette, Brandon Enterline

Game Time	BCE	Score	Diff	UND
01:35	33 SAMUEL S steal (2)			20 KING L turnover bad pass (1)
01:32	33 SAMUEL S foul drawn (2)			3 HIDALGO H foul shooting (1 - 5)
01:32	32 SIDBERRY T substitution out			
01:32	13 GREENE T substitution in			
01:32	33 SAMUEL S free throw fast break 1 - 2 made (3)	18-17	1	
01:32	33 SAMUEL S free throw fast break 2 - 2 missed			
01:30				20 KING L defensive rebound (2)
01:11				3 HIDALGO H 3pt FG , step back jump shot missed
01:06	21 DALEY A defensive rebound (2)			
01:06	21 DALEY A turnover travel (2)			
01:05	33 SAMUEL S substitution out			
01:05	2 IVEY K substitution in			
00:55				3 HIDALGO H 2pt FG from turnover in the paint, driving layup missed
00:53	10 NDIAYE N defensive rebound (2)			
00:36	30 TODD T 3pt FG , jump shot missed			
00:34				defensive rebound (9)
00:05				11 CITRON S 2pt FG outside the paint, jump shot blocked
00:05	13 GREENE T block (1)			
00:01	2 IVEY K defensive rebound (1)			
00:00	30 TODD T turnover travel (1)			
<b>END OF PERIOD</b>				
<b>BCE 18-17 UND</b>				



**Officials:** Tiara Cruse, Bryan Brunette, Brandon Enterline

**Notre Dame - 17**

NO.	Name	F	Min	FG	3P	FT	Rebounds			Fouls		TP	AS	TO	ST	Blocks		+/-
				M-A	M-A	M-A	OR	DR	TOT	PF	FD					BS	BA	
20	Liatu King	F	06:25	2-3	0-0	0-0	0	2	2	1	0	4	0	1	0	0	0	-2
21	Maddy Westbeld	F	07:47	1-1	0-0	0-0	1	1	2	0	1	2	1	0	0	0	0	0
3	Hannah Hidalgo	G	10:00	2-8	1-2	0-0	1	0	1	1	0	5	1	0	2	0	0	-1
5	Olivia Miles	G	04:12	0-0	0-0	0-0	0	1	1	2	0	0	1	2	0	1	0	-1
11	Sonia Citron	G	08:47	0-2	0-1	0-0	0	0	0	0	0	0	2	1	0	0	1	3
8	Cassandre Prosper		07:01	1-1	0-0	0-1	0	1	1	1	1	2	0	1	0	0	0	-4
32	Liza Karlen		03:35	2-2	0-0	0-0	0	0	0	0	1	4	0	0	0	0	0	1
13	Kate Koval		02:13	0-0	0-0	0-0	0	0	0	0	0	0	0	0	0	0	0	-1
Team							1	1	2			0			0			
<b>Totals</b>				8-17	1-3	0-1	3	6	9	5	3	17	5	5	2	1	1	-1

Shooting By Period		
1st FG%	8-17	47.1%
3PT%	1-3	33.3%
FT%	0-1	0%
GM FG%	8-17	47.1%
3PT%	1-3	33.3%
FT%	0-1	0.0%

Dead Ball Rebounds: 0, 0

Technical Fouls::NONE

**Boston College - 18**

NO.	Name	F	Min	FG	3P	FT	Rebounds			Fouls		TP	AS	TO	ST	Blocks		+/-
				M-A	M-A	M-A	OR	DR	TOT	PF	FD					BS	BA	
32	Teya Sidberry	F	08:28	2-4	0-0	0-0	0	2	2	1	0	4	0	0	0	0	0	0
2	Kaylah Ivey	G	06:15	1-2	1-2	0-0	0	1	1	0	0	3	1	0	0	0	0	-1
21	Andrea Daley	G	08:01	0-1	0-0	0-0	0	2	2	0	0	0	0	2	0	0	0	-1
24	Dontavia Waggoner	G	04:58	0-0	0-0	2-2	0	0	0	1	3	2	0	1	0	0	0	-1
30	T' yana Todd	G	10:00	2-5	0-1	0-0	0	0	0	0	0	4	0	1	0	0	1	1
33	Savannah Samuel		05:56	0-1	0-0	3-4	1	0	1	1	2	3	0	0	2	0	0	4
10	Nene Ndiaye		04:50	1-2	0-1	0-0	1	1	2	0	0	2	0	0	0	0	0	2
13	Tatum Greene		01:32	0-0	0-0	0-0	0	0	0	0	0	0	0	0	0	1	0	1
Team							1	1	2			0			2			
<b>Totals</b>				6-15	1-4	5-6	3	7	10	3	5	18	1	6	2	1	1	1

Shooting By Period		
1st FG%	6-15	40.0%
3PT%	1-4	25.0%
FT%	5-6	83.3%
GM FG%	6-15	40.0%
3PT%	1-4	25.0%
FT%	5-6	83.3%

Dead Ball Rebounds: 1, 0

Technical Fouls::NONE

	UND	BCE
<b>Biggest lead</b>	3 (1 <sup>st</sup> 7:24)	3 (1 <sup>st</sup> 9:42)
<b>Best Scoring Run</b>	6 (1 <sup>st</sup> 7:24)	4 (1 <sup>st</sup> 5:58)
<b>Lead Changes</b>	6	
<b>Times Tied</b>	3	
<b>Time with Lead</b>	02:23	05:52

Points from	UND	BCE
<b>Turnovers</b>	2	3
<b>Paint</b>	14	6
<b>Second Chance</b>	6	4
<b>Fast Breaks</b>	0	1
<b>Bench</b>	6	5

	Period by Period Scoring				
	1st	2nd	3rd	4th	TOT
<b>UND</b>	17	24	27	21	89
<b>BCE</b>	18	13	17	15	63



**Period 2**

**Quarter Starters:**

<b>BCE</b>	2 Ivey K	24 Waggoner D	30 Todd T	32 Sidberry T	33 Samuel S
<b>UND</b>	3 Hidalgo H	5 Miles O	11 Citron S	20 King L	21 Westbeld M

Game Time	BCE	Score	Diff	UND
10:00	10 NDIAYE N substitution out			
10:00	13 GREENE T substitution out			
10:00	21 DALEY A substitution out			
10:00	24 WAGGONER D substitution in			
10:00	32 SIDBERRY T substitution in			
10:00	33 SAMUEL S substitution in			
10:00				8 PROSPER C substitution out
10:00				13 KOVAL K substitution out
10:00				5 MILES O substitution in
10:00				21 WESTBELD M substitution in
09:37		<b>18-19</b>	<b>-1</b>	21 WESTBELD M 2pt FG in the paint, layup made (4)
09:37				20 KING L assist (1)
09:10	33 SAMUEL S 2pt FG in the paint, driving layup missed			
09:08	24 WAGGONER D offensive rebound (1)			
09:07	24 WAGGONER D 2pt FG second chance in the paint, layup missed			
09:02				11 CITRON S defensive rebound (1)
08:59		<b>18-22</b>	<b>-4</b>	5 MILES O 3pt FG , jump shot made (3)
08:59				11 CITRON S assist (3)
08:42	30 TODD T 3pt FG , jump shot made (7)	<b>21-22</b>	<b>-1</b>	
08:42	32 SIDBERRY T assist (1)			
08:29	33 SAMUEL S foul personal (2 - 1)			20 KING L foul drawn (1)
08:29	33 SAMUEL S substitution out			
08:29	21 DALEY A substitution in			
08:24				11 CITRON S 2pt FG outside the paint, jump shot missed
08:18	21 DALEY A defensive rebound (3)			
08:13	24 WAGGONER D turnover travel (2)			
08:03				3 HIDALGO H 2pt FG from turnover in the paint, driving layup missed
07:59				20 KING L offensive rebound (3)
07:53		<b>21-25</b>	<b>-4</b>	21 WESTBELD M 3pt FG from turnover second chance, jump shot made (7)
07:53				3 HIDALGO H assist (2)
07:30	30 TODD T 3pt FG , jump shot missed			
07:27				11 CITRON S defensive rebound (2)
07:21				3 HIDALGO H 3pt FG , jump shot missed
07:19				3 HIDALGO H offensive rebound (2)
07:18				3 HIDALGO H 2pt FG second chance in the paint, layup missed
07:16				3 HIDALGO H offensive rebound (3)
07:14				3 HIDALGO H 2pt FG second chance in the paint, layup missed
07:12	21 DALEY A defensive rebound (4)			
07:09	24 WAGGONER D 2pt FG fast break in the paint, layup made (4)	<b>23-25</b>	<b>-2</b>	
07:09	21 DALEY A assist (1)			
06:57				11 CITRON S 3pt FG , jump shot missed



**Notre Dame at Boston College**

01/23/25 Conte Forum, Chestnut Hill, Mass.  
2024-25 Women's Basketball

**Game Time:** 7:00 PM  
**Game Duration:** 1:44  
**Attendance:** 2,879

**Officials:** Tiara Cruse, Bryan Brunette, Brandon Enterline

Game Time	BCE	Score	Diff	UND
06:55				3 HIDALGO H offensive rebound (4)
06:54		<b>23-27</b>	<b>-4</b>	3 HIDALGO H 2pt FG second chance outside the paint, jump shot made (7)
06:36	2 IVEY K 3pt FG , jump shot missed			
06:35	offensive rebound (14)			
06:35	21 DALEY A substitution out			
06:35	24 WAGGONER D substitution out			
06:35	30 TODD T substitution out			
06:35	10 NDIAYE N substitution in			
06:35	13 GREENE T substitution in			
06:35	33 SAMUEL S substitution in			
06:35				3 HIDALGO H substitution out
06:35				8 PROSPER C substitution in
06:26	2 IVEY K 3pt FG second chance, jump shot made (6)	<b>26-27</b>	<b>-1</b>	
06:26	10 NDIAYE N assist (1)			
06:13		<b>26-30</b>	<b>-4</b>	21 WESTBELD M 3pt FG , jump shot made (10)
06:13				11 CITRON S assist (4)
05:50	32 SIDBERRY T 2pt FG in the paint, layup missed			
05:47				8 PROSPER C defensive rebound (2)
05:35		<b>26-32</b>	<b>-6</b>	20 KING L 2pt FG in the paint, driving layup made (6)
05:28	2 IVEY K turnover bad pass (1)			20 KING L steal (1)
05:22		<b>26-35</b>	<b>-9</b>	5 MILES O 3pt FG fast break from turnover, jump shot made (6)
05:22				11 CITRON S assist (5)
05:22	Timeout 30 Sec			
05:22	2 IVEY K substitution out			
05:22	10 NDIAYE N substitution out			
05:22	21 DALEY A substitution in			
05:22	30 TODD T substitution in			
05:22				11 CITRON S substitution out
05:22				32 KARLEN L substitution in
04:56	21 DALEY A 2pt FG outside the paint, step back jump shot made (2)	<b>28-35</b>	<b>-7</b>	
04:37				8 PROSPER C turnover travel (2)
04:17	13 GREENE T 3pt FG from turnover, jump shot missed			
04:13				5 MILES O defensive rebound (2)
04:06	13 GREENE T foul shooting (1 - 2)			32 KARLEN L foul drawn (2)
04:06				20 KING L substitution out
04:06				3 HIDALGO H substitution in
04:06	13 GREENE T substitution out			
04:06	10 NDIAYE N substitution in			
04:06		<b>28-36</b>	<b>-8</b>	32 KARLEN L free throw 1 - 2 made (5)
04:06		<b>28-37</b>	<b>-9</b>	32 KARLEN L free throw 2 - 2 made (6)
03:47	10 NDIAYE N 2pt FG outside the paint, pull up jump shot made (4)	<b>30-37</b>	<b>-7</b>	
03:34				5 MILES O 3pt FG , step back jump shot missed
03:31				21 WESTBELD M offensive rebound (3)
03:23				3 HIDALGO H turnover bad pass (1)
03:06	30 TODD T 3pt FG from turnover, jump shot missed			
03:02	33 SAMUEL S offensive rebound (2)			



**Notre Dame at Boston College**

01/23/25 Conte Forum, Chestnut Hill, Mass.  
2024-25 Women's Basketball

Officials: Tiara Cruse, Bryan Brunette, Brandon Enterline

Game Time	BCE	Score	Diff	UND
02:55	30 TODD T 3pt FG from turnover second chance, jump shot missed			
02:52	32 SIDBERRY T offensive rebound (3)			
02:52	32 SIDBERRY T foul drawn (1)			21 WESTBELD M foul shooting (1 - 1)
02:52	32 SIDBERRY T free throw 1 - 2 missed			
02:52	offensive dead ball rebound (2)			
02:52	32 SIDBERRY T free throw 2 - 2 made (5)	<b>31-37</b>	<b>-6</b>	
02:52	33 SAMUEL S substitution out			
02:52	24 WAGGONER D substitution in			
02:52				8 PROSPER C substitution out
02:52				11 CITRON S substitution in
02:39	24 WAGGONER D steal (1)			32 KARLEN L turnover lost ball (1)
02:32	24 WAGGONER D turnover lost ball (3)			5 MILES O steal (1)
02:24		<b>31-39</b>	<b>-8</b>	3 HIDALGO H 2pt FG fast break from turnover in the paint, layup made (9)
02:16	32 SIDBERRY T 3pt FG , jump shot missed			
02:13				11 CITRON S defensive rebound (3)
02:07				5 MILES O 3pt FG , jump shot missed
02:05				offensive rebound (20)
02:05				21 WESTBELD M substitution out
02:05				20 KING L substitution in
01:51	21 DALEY A steal (1)			20 KING L turnover lost ball (2)
01:42	21 DALEY A turnover travel (3)			
01:24				11 CITRON S 3pt FG from turnover, jump shot missed
01:18				3 HIDALGO H offensive rebound (5)
00:59	32 SIDBERRY T steal (1)			32 KARLEN L turnover bad pass (2)
00:52	24 WAGGONER D 2pt FG from turnover in the paint, layup missed			
00:50	24 WAGGONER D offensive rebound (2)			
00:49	32 SIDBERRY T 2pt FG from turnover second chance in the paint, jump shot missed			
00:46				32 KARLEN L defensive rebound (1)
00:41	30 TODD T foul shooting (1 - 3)			3 HIDALGO H foul drawn (1)
00:41				32 KARLEN L substitution out
00:41				13 KOVAL K substitution in
00:41		<b>31-40</b>	<b>-9</b>	3 HIDALGO H free throw fast break 1 - 2 made (10)
00:41		<b>31-41</b>	<b>-10</b>	3 HIDALGO H free throw fast break 2 - 2 made (11)
00:26	21 DALEY A 3pt FG , jump shot missed			
00:24				defensive rebound (23)
00:02				13 KOVAL K turnover lost ball (1)
00:00	21 DALEY A 3pt FG from turnover, jump shot missed			
00:00				defensive dead ball rebound (1)
<b>END OF PERIOD</b>				
<b>BCE 31-41 UND</b>				





**Notre Dame at Boston College**

01/23/25 Conte Forum, Chestnut Hill, Mass.  
2024-25 Women's Basketball

Game Time: 7:00 PM  
Game Duration: 1:44  
Attendance: 2,879

Officials: Tiara Cruse, Bryan Brunette, Brandon Enterline

**Notre Dame - 24**

NO.	Name	F	Min	FG			Rebounds			Fouls		TP	AS	TO	ST	Blocks		+/-
				M-A	3P	FT	OR	DR	TOT	PF	FD					BS	BA	
20	Liatu King	F	07:59	1-1	0-0	0-0	1	0	1	0	1	2	1	1	1	0	0	10
21	Maddy Westbeld	F	07:55	3-3	2-2	0-0	1	0	1	1	0	8	0	0	0	0	0	9
3	Hannah Hidalgo	G	07:31	2-6	0-1	2-2	4	0	4	0	1	6	1	1	0	0	0	8
5	Olivia Miles	G	10:00	2-4	2-4	0-0	0	1	1	0	0	6	0	0	1	0	0	11
11	Sonia Citron	G	07:30	0-3	0-2	0-0	0	3	3	0	0	0	3	0	0	0	0	14
8	Cassandre Prosper		03:43	0-0	0-0	0-0	0	1	1	0	0	0	0	1	0	0	0	2
32	Liza Karlen		04:40	0-0	0-0	2-2	0	1	1	0	1	2	0	2	0	0	0	-1
13	Kate Koval		00:42	0-0	0-0	0-0	0	0	0	0	0	0	0	1	0	0	0	2
Team							1	1	2			0		0				
<b>Totals</b>				8-17	4-9	4-4	7	7	14	1	3	24	5	6	2	0	0	11

Shooting By Period		
2nd FG%	8-17	47.1%
3PT%	4-9	44.4%
FT%	4-4	100%
GM FG%	8-17	47.1%
3PT%	4-9	44.4%
FT%	4-4	100.0%

Dead Ball Rebounds: 0, 1

Technical Fouls::NONE

**Boston College - 13**

NO.	Name	F	Min	FG			Rebounds			Fouls		TP	AS	TO	ST	Blocks		+/-
				M-A	3P	FT	OR	DR	TOT	PF	FD					BS	BA	
32	Teya Sidberry	F	10:00	0-3	0-1	1-2	1	0	1	0	1	1	1	0	1	0	0	-11
2	Kaylah Ivey	G	04:38	1-2	1-2	0-0	0	0	0	0	0	3	0	1	0	0	0	-10
21	Andrea Daley	G	07:16	1-3	0-2	0-0	0	2	2	0	0	2	1	1	1	0	0	-4
24	Dontavia Waggoner	G	06:17	1-3	0-0	0-0	2	0	2	0	0	2	0	2	1	0	0	-9
30	T'yana Todd	G	08:47	1-4	1-4	0-0	0	0	0	1	0	3	0	0	0	0	0	-6
33	Savannah Samuel		05:14	0-1	0-0	0-0	1	0	1	1	0	0	0	0	0	0	0	-4
10	Nene Ndiaye		05:19	1-1	0-0	0-0	0	0	0	0	0	2	1	0	0	0	0	-8
13	Tatum Greene		02:29	0-1	0-1	0-0	0	0	0	1	0	0	0	0	0	0	0	-3
Team							1	0	1			0		0				
<b>Totals</b>				5-18	2-10	1-2	5	2	7	3	1	13	3	4	3	0	0	-11

Shooting By Period		
2nd FG%	5-18	27.8%
3PT%	2-10	20.0%
FT%	1-2	50%
GM FG%	5-18	27.8%
3PT%	2-10	20.0%
FT%	1-2	50.0%

Dead Ball Rebounds: 1, 0

Technical Fouls::NONE

	UND	BCE
Biggest lead	10 (2 <sup>nd</sup> 0:41)	0 (1 <sup>st</sup> 10:00)
Best Scoring Run	8(2 <sup>nd</sup> 5:22)	3(2 <sup>nd</sup> 8:42)
Lead Changes	1	
Times Tied	0	
Time with Lead	09:37	00:00

Points from	UND	BCE
Turnovers	8	1
Paint	6	2
Second Chance	5	4
Fast Breaks	7	2
Bench	2	2

	Period by Period Scoring				
	1st	2nd	3rd	4th	TOT
UND	17	24	27	21	89
BCE	18	13	17	15	63



**Officials:** Tiara Cruse, Bryan Brunette, Brandon Enterline

**Notre Dame - 41**

NO.	Name	F	Min	FG			3P			FT			Rebounds			Fouls		TP	AS	TO	ST	Blocks		+/-
				M-A	M-A	M-A	OR	DR	TOT	PF	FD	BS	BA											
20	Liatu King	F	14:24	3-4	0-0	0-0	1	2	3	1	1	6	1	2	1	0	0	8						
21	Maddy Westbeld	F	15:42	4-4	2-2	0-0	2	1	3	1	1	10	1	0	0	0	9							
3	Hannah Hidalgo	G	17:31	4-14	1-3	2-2	5	0	5	1	1	11	2	1	2	0	7							
5	Olivia Miles	G	14:12	2-4	2-4	0-0	0	2	2	2	0	6	1	2	1	1	10							
11	Sonia Citron	G	16:17	0-5	0-3	0-0	0	3	3	0	0	0	5	1	0	0	17							
8	Cassandre Prosper		10:44	1-1	0-0	0-1	0	2	2	1	1	2	0	2	0	0	-2							
32	Liza Karlen		08:15	2-2	0-0	2-2	0	1	1	0	2	6	0	2	0	0	0							
13	Kate Koval		02:55	0-0	0-0	0-0	0	0	0	0	0	0	0	1	0	0	1							
Team							2	2	4			0		0										
<b>Totals</b>				16-34	5-12	4-5	10	13	23	6	6	41	10	11	4	1	1	10						

Shooting By Period		
1st FG%	8-17	47.1%
3PT%	1-3	33.3%
FT%	0-1	0%
2nd FG%	8-17	47.1%
3PT%	4-9	44.4%
FT%	4-4	100%
GM FG%	16-34	47.1%
3PT%	5-12	41.7%
FT%	4-5	80.0%

Dead Ball Rebounds: 0, 1

Technical Fouls::NONE

**Boston College - 31**

NO.	Name	F	Min	FG			3P			FT			Rebounds			Fouls		TP	AS	TO	ST	Blocks		+/-
				M-A	M-A	M-A	OR	DR	TOT	PF	FD	BS	BA											
32	Teya Sidberry	F	18:28	2-7	0-1	1-2	1	2	3	1	1	5	1	0	1	0	-11							
2	Kaylah Ivey	G	10:53	2-4	2-4	0-0	0	1	1	0	0	6	1	1	0	0	-11							
21	Andrea Daley	G	15:17	1-4	0-2	0-0	0	4	4	0	0	2	1	3	1	0	-5							
24	Dontavia Waggoner	G	11:15	1-3	0-0	2-2	2	0	2	1	3	4	0	3	1	0	-10							
30	T'yana Todd	G	18:47	3-9	1-5	0-0	0	0	0	1	0	7	0	1	0	0	-5							
33	Savannah Samuel		11:10	0-2	0-0	3-4	2	0	2	2	2	3	0	0	2	0	0							
10	Nene Ndiaye		10:09	2-3	0-1	0-0	1	1	2	0	0	4	1	0	0	0	-6							
13	Tatum Greene		04:01	0-1	0-1	0-0	0	0	0	1	0	0	0	0	0	0	-2							
Team							2	1	3			0		2										
<b>Totals</b>				11-33	3-14	6-8	8	9	17	6	6	31	4	10	5	1	1	-10						

Shooting By Period		
1st FG%	6-15	40.0%
3PT%	1-4	25.0%
FT%	5-6	83.3%
2nd FG%	5-18	27.8%
3PT%	2-10	20.0%
FT%	1-2	50%
GM FG%	11-33	33.3%
3PT%	3-14	21.4%
FT%	6-8	75.0%

Dead Ball Rebounds: 2, 0

Technical Fouls::NONE

	UND	BCE
Biggest lead	10 (2 <sup>nd</sup> 0:41)	3 (1 <sup>st</sup> 9:42)
Best Scoring Run	8(2 <sup>nd</sup> 5:22)	4(1 <sup>st</sup> 5:58)
Lead Changes	7	
Times Tied	3	
Time with Lead	12:00	06:15

Points from	UND	BCE
Turnovers	10	4
Paint	20	8
Second Chance	11	8
Fast Breaks	7	3
Bench	8	7

	Period by Period Scoring				
	1st	2nd	3rd	4th	TOT
UND	17	24	27	21	89
BCE	18	13	17	15	63



**Period 3**

**Quarter Starters:**

<b>BCE</b>	2 Ivey K	21 Daley A	24 Waggoner D	30 Todd T	32 Sidberry T
<b>UND</b>	3 Hidalgo H	5 Miles O	11 Citron S	20 King L	21 Westbeld M

Game Time	BCE	Score	Diff	UND
10:00	10 NDIAYE N substitution out			
10:00	2 IVEY K substitution in			
10:00				13 KOVAL K substitution out
10:00				21 WESTBELD M substitution in
09:44	30 TODD T turnover bad pass (2)			20 KING L steal (2)
09:40	24 WAGGONER D foul personal (2 - 1)			20 KING L foul drawn (2)
09:25				3 HIDALGO H 2pt FG from turnover outside the paint, floating jump shot missed
09:20				21 WESTBELD M offensive rebound (4)
09:20		<b>31-43</b>	<b>-12</b>	21 WESTBELD M 2pt FG from turnover second chance in the paint, tip-in layup made (12)
08:57	32 SIDBERRY T 3pt FG , jump shot missed			
08:53				11 CITRON S defensive rebound (4)
08:51	30 TODD T steal (1)			11 CITRON S turnover lost ball (2)
08:48	30 TODD T 2pt FG fast break from turnover in the paint, layup made (9)	<b>33-43</b>	<b>-10</b>	
08:39				5 MILES O 3pt FG , jump shot missed
08:34	21 DALEY A defensive rebound (5)			
08:28	2 IVEY K 3pt FG , pull up jump shot missed			
08:23	32 SIDBERRY T offensive rebound (4)			
08:22	32 SIDBERRY T turnover lost ball (1)			11 CITRON S steal (1)
08:19		<b>33-45</b>	<b>-12</b>	3 HIDALGO H 2pt FG fast break from turnover in the paint, driving layup made (13)
07:50	24 WAGGONER D 2pt FG outside the paint, jump shot missed			
07:47	21 DALEY A offensive rebound (6)			
07:47	21 DALEY A 2pt FG second chance in the paint, tip-in layup missed			
07:47	21 DALEY A offensive rebound (7)			
07:47	2 IVEY K foul drawn (1)			21 WESTBELD M foul personal (2 - 1)
07:47				11 CITRON S substitution out
07:47				8 PROSPER C substitution in
07:42	32 SIDBERRY T 2pt FG second chance in the paint, driving layup missed			
07:40				21 WESTBELD M defensive rebound (5)
07:32		<b>33-47</b>	<b>-14</b>	20 KING L 2pt FG in the paint, layup made (8)
07:32				5 MILES O assist (2)
06:59	30 TODD T 2pt FG outside the paint, turnaround jump shot made (11)	<b>35-47</b>	<b>-12</b>	
06:43		<b>35-49</b>	<b>-14</b>	21 WESTBELD M 2pt FG in the paint, layup made (14)
06:43				3 HIDALGO H assist (3)
06:37	21 DALEY A foul drawn (1)			21 WESTBELD M foul shooting (3 - 2)
06:37	2 IVEY K substitution out			
06:37	32 SIDBERRY T substitution out			
06:37	13 GREENE T substitution in			
06:37	33 SAMUEL S substitution in			



**Notre Dame at Boston College**

01/23/25 Conte Forum, Chestnut Hill, Mass.  
2024-25 Women's Basketball

**Game Time:** 7:00 PM  
**Game Duration:** 1:44  
**Attendance:** 2,879

**Officials:** Tiara Cruse, Bryan Brunette, Brandon Enterline

Game Time	BCE	Score	Diff	UND
06:37				21 WESTBELD M substitution out
06:37				32 KARLEN L substitution in
06:37	21 DALEY A free throw fast break 1 - 2 made (3)	<b>36-49</b>	<b>-13</b>	
06:37	21 DALEY A free throw fast break 2 - 2 missed			
06:35				20 KING L defensive rebound (4)
06:25	21 DALEY A substitution out			
06:25	10 NDIAYE N substitution in			
06:12	10 NDIAYE N steal (1)			8 PROSPER C turnover lost ball (3)
06:07	30 TODD T 2pt FG from turnover in the paint, driving layup made (13)	<b>38-49</b>	<b>-11</b>	
05:42		<b>38-51</b>	<b>-13</b>	3 HIDALGO H 2pt FG in the paint, layup made (15)
05:22	13 GREENE T 2pt FG in the paint, driving layup missed			
05:19				20 KING L defensive rebound (5)
05:14	10 NDIAYE N foul shooting (1 - 2)			3 HIDALGO H foul drawn (2)
05:14				8 PROSPER C substitution out
05:14				11 CITRON S substitution in
05:14				3 HIDALGO H free throw 1 - 2 missed
05:14				offensive dead ball rebound (2)
05:14		<b>38-52</b>	<b>-14</b>	3 HIDALGO H free throw 2 - 2 made (16)
04:56	13 GREENE T turnover bad pass (1)			11 CITRON S steal (2)
04:52		<b>38-54</b>	<b>-16</b>	5 MILES O 2pt FG fast break from turnover in the paint, layup made (8)
04:52				11 CITRON S assist (6)
04:32	33 SAMUEL S 2pt FG in the paint, driving layup made (5)	<b>40-54</b>	<b>-14</b>	
04:32	10 NDIAYE N assist (2)			
04:20				32 KARLEN L 2pt FG outside the paint, jump shot missed
04:17				11 CITRON S offensive rebound (5)
04:17		<b>40-56</b>	<b>-16</b>	11 CITRON S 2pt FG second chance in the paint, layup made (2)
04:17	33 SAMUEL S foul shooting (3 - 3)			11 CITRON S foul drawn (1)
04:17	Timeout media			
04:17		<b>40-57</b>	<b>-17</b>	11 CITRON S free throw 1 - 1 made (3)
04:07	33 SAMUEL S 2pt FG in the paint, layup made (7)	<b>42-57</b>	<b>-15</b>	
04:07	30 TODD T assist (1)			
03:51				5 MILES O 3pt FG , jump shot missed
03:47				11 CITRON S offensive rebound (6)
03:46		<b>42-59</b>	<b>-17</b>	11 CITRON S 2pt FG second chance in the paint, layup made (5)
03:30	10 NDIAYE N 2pt FG in the paint, pull up jump shot made (6)	<b>44-59</b>	<b>-15</b>	
03:02				3 HIDALGO H 2pt FG in the paint, layup missed
02:59	33 SAMUEL S defensive rebound (3)			
02:55	13 GREENE T foul drawn (1)			20 KING L foul personal (2 - 3)
02:55	13 GREENE T substitution out			
02:55	21 DALEY A substitution in			
02:55				20 KING L substitution out
02:55				13 KOVAL K substitution in
02:34	10 NDIAYE N 2pt FG in the paint, driving layup missed			
02:34				defensive rebound (31)
02:20		<b>44-62</b>	<b>-18</b>	3 HIDALGO H 3pt FG , jump shot made (19)
02:20				13 KOVAL K assist (1)



**Notre Dame at Boston College**

01/23/25 Conte Forum, Chestnut Hill, Mass.  
2024-25 Women's Basketball

**Officials:** Tiara Cruse, Bryan Brunette, Brandon Enterline

Game Time	BCE	Score	Diff	UND
02:02	24 WAGGONER D turnover travel (4)			
01:47				11 CITRON S 2pt FG from turnover outside the paint, jump shot missed
01:46	defensive rebound (23)			
01:46	21 DALEY A foul drawn (2)			11 CITRON S foul personal (1 - 4)
01:46	21 DALEY A substitution out			
01:46	24 WAGGONER D substitution out			
01:46	2 IVEY K substitution in			
01:46	23 JACKSON K substitution in			
01:35	2 IVEY K turnover lost ball (2)			3 HIDALGO H steal (3)
01:31		<b>44-64</b>	<b>-20</b>	3 HIDALGO H 2pt FG fast break from turnover in the paint, layup made (21)
01:15	23 JACKSON K 2pt FG in the paint, layup made (2)	<b>46-64</b>	<b>-18</b>	
01:06		<b>46-66</b>	<b>-20</b>	5 MILES O 2pt FG in the paint, driving layup made (10)
00:43	10 NDIAYE N 2pt FG outside the paint, jump shot made (8)	<b>48-66</b>	<b>-18</b>	
00:30				3 HIDALGO H 2pt FG in the paint, driving layup missed
00:30				13 KOVAL K offensive rebound (1)
00:30	2 IVEY K foul personal (1 - 4)			13 KOVAL K foul drawn (1)
00:30				3 HIDALGO H substitution out
00:30				8 PROSPER C substitution in
00:27		<b>48-68</b>	<b>-20</b>	11 CITRON S 2pt FG second chance in the paint, pull up jump shot made (7)
00:00	33 SAMUEL S 2pt FG outside the paint, jump shot blocked			
00:00				11 CITRON S block (1)
00:00				defensive dead ball rebound (3)
<b>END OF PERIOD</b>				
<b>BCE 48-68 UND</b>				



**Officials:** Tiara Cruse, Bryan Brunette, Brandon Enterline

**Notre Dame - 27**

NO.	Name	F	Min	FG			Rebounds			Fouls		TP	AS	TO	ST	Blocks		+/-
				M-A	M-A	M-A	OR	DR	TOT	PF	FD					BS	BA	
20	Liatu King	F	07:05	1-1	0-0	0-0	0	2	2	1	1	2	0	0	1	0	0	5
21	Maddy Westbeld	F	03:23	2-2	0-0	0-0	1	1	2	2	0	4	0	0	0	0	0	4
3	Hannah Hidalgo	G	09:30	4-7	1-1	1-2	0	0	0	0	1	10	1	0	1	0	0	8
5	Olivia Miles	G	10:00	2-4	0-2	0-0	0	0	0	0	0	4	1	0	0	0	0	10
11	Sonia Citron	G	07:27	3-4	0-0	1-1	2	1	3	1	1	7	1	1	2	1	0	9
8	Cassandre Prosper		03:03	0-0	0-0	0-0	0	0	0	0	0	0	0	1	0	0	0	3
32	Liza Karlen		06:37	0-1	0-0	0-0	0	0	0	0	0	0	0	0	0	0	0	6
13	Kate Koval		02:55	0-0	0-0	0-0	1	0	1	0	1	0	1	0	0	0	0	5
Team							0	1	1			0		0				
<b>Totals</b>				12-19	1-3	2-3	4	5	9	4	4	27	4	2	4	1	0	10

Shooting By Period		
3rd FG%	12-19	63.2%
3PT%	1-3	33.3%
FT%	2-3	66.7%
GM FG%	12-19	63.2%
3PT%	1-3	33.3%
FT%	2-3	66.7%

Dead Ball Rebounds: 1, 1

**Technical Fouls::NONE**

**Boston College - 17**

NO.	Name	F	Min	FG			Rebounds			Fouls		TP	AS	TO	ST	Blocks		+/-
				M-A	M-A	M-A	OR	DR	TOT	PF	FD					BS	BA	
32	Teya Sidberry	F	03:23	0-2	0-1	0-0	1	0	1	0	0	0	0	1	0	0	0	-4
2	Kaylah Ivey	G	05:09	0-1	0-1	0-0	0	0	0	1	1	0	0	1	0	0	0	-6
21	Andrea Daley	G	04:44	0-1	0-0	1-2	2	1	3	0	2	1	0	0	0	0	0	-6
24	Dontavia Waggoner	G	08:14	0-1	0-0	0-0	0	0	0	1	0	0	0	1	0	0	0	-8
30	T'yana Todd	G	10:00	3-3	0-0	0-0	0	0	0	0	0	6	1	1	1	0	0	-10
13	Tatum Greene		03:42	0-1	0-0	0-0	0	0	0	0	1	0	0	1	0	0	0	-1
33	Savannah Samuel		06:37	2-3	0-0	0-0	0	1	1	1	0	4	0	0	0	0	1	-6
10	Nene Ndiaye		06:25	2-3	0-0	0-0	0	0	0	1	0	4	1	0	1	0	0	-7
23	Kennedi Jackson		01:46	1-1	0-0	0-0	0	0	0	0	0	2	0	0	0	0	0	-2
Team							0	1	1			0		0				
<b>Totals</b>				8-16	0-2	1-2	3	3	6	4	4	17	2	5	2	0	1	-10

Shooting By Period		
3rd FG%	8-16	50.0%
3PT%	0-2	0.0%
FT%	1-2	50%
GM FG%	8-16	50.0%
3PT%	0-2	0.0%
FT%	1-2	50.0%

Dead Ball Rebounds: 0, 0

**Technical Fouls::NONE**

	UND	BCE
<b>Biggest lead</b>	20 (3 <sup>rd</sup> 1:31)	0 (1 <sup>st</sup> 10:00)
<b>Best Scoring Run</b>	5(3 <sup>rd</sup> 4:52)	3(3 <sup>rd</sup> 6:07)
<b>Lead Changes</b>	0	
<b>Times Tied</b>	0	
<b>Time with Lead</b>	09:25	00:00

Points from	UND	BCE
<b>Turnovers</b>	8	4
<b>Paint</b>	22	12
<b>Second Chance</b>	9	0
<b>Fast Breaks</b>	6	3
<b>Bench</b>	0	10

Period by Period Scoring					
	1st	2nd	3rd	4th	TOT
<b>UND</b>	17	24	27	21	89
<b>BCE</b>	18	13	17	15	63



**Period 4**

**Quarter Starters:**

<b>BCE</b>	2 Ivey K	10 Ndiaye N	23 Jackson K	30 Todd T	33 Samuel S
<b>UND</b>	3 Hidalgo H	5 Miles O	8 Prosper C	20 King L	21 Westbeld M

Game Time	BCE	Score	Diff	UND
10:00				11 CITRON S substitution out
10:00				13 KOVAL K substitution out
10:00				32 KARLEN L substitution out
10:00				3 HIDALGO H substitution in
10:00				20 KING L substitution in
10:00				21 WESTBELD M substitution in
09:45				21 WESTBELD M 3pt FG , jump shot missed
09:41	33 SAMUEL S defensive rebound (4)			
09:26	30 TODD T foul drawn (1)			21 WESTBELD M foul shooting (4 - 1)
09:26				21 WESTBELD M substitution out
09:26				32 KARLEN L substitution in
09:26	30 TODD T free throw 1 - 2 made (14)	<b>49-68</b>	<b>-19</b>	
09:26	30 TODD T free throw 2 - 2 made (15)	<b>50-68</b>	<b>-18</b>	
09:26	2 IVEY K substitution out			
09:26	0 TOMLINSON A substitution in			
09:14				8 PROSPER C 2pt FG in the paint, layup missed
09:12				8 PROSPER C offensive rebound (3)
09:11		<b>50-70</b>	<b>-20</b>	8 PROSPER C 2pt FG second chance in the paint, layup made (4)
09:02	30 TODD T 3pt FG , jump shot made (18)	<b>53-70</b>	<b>-17</b>	
09:02	10 NDIAYE N assist (3)			
08:49				20 KING L 2pt FG in the paint, layup missed
08:45	23 JACKSON K defensive rebound (1)			
08:41	0 TOMLINSON A turnover lost ball (1)			3 HIDALGO H steal (4)
08:36		<b>53-72</b>	<b>-19</b>	3 HIDALGO H 2pt FG fast break from turnover in the paint, layup made (23)
08:36				20 KING L assist (2)
08:22	23 JACKSON K 2pt FG in the paint, layup made (4)	<b>55-72</b>	<b>-17</b>	
08:14				5 MILES O 3pt FG , jump shot missed
08:11	0 TOMLINSON A defensive rebound (1)			
08:00	33 SAMUEL S turnover bad pass (1)			3 HIDALGO H steal (5)
07:54	0 TOMLINSON A foul drawn (1)			3 HIDALGO H foul offensive (2 - 2)
07:54				3 HIDALGO H turnover offensive (2)
07:54				8 PROSPER C substitution out
07:54				11 CITRON S substitution in
07:26	23 JACKSON K 2pt FG from turnover in the paint, turnaround jump shot missed			
07:22	10 NDIAYE N offensive rebound (3)			
07:20	10 NDIAYE N 3pt FG from turnover second chance, jump shot missed			
07:18				32 KARLEN L defensive rebound (2)
07:18	33 SAMUEL S foul personal (4 - 1)			32 KARLEN L foul drawn (3)
07:18	33 SAMUEL S substitution out			
07:18	24 WAGGONER D substitution in			



**Notre Dame at Boston College**

01/23/25 Conte Forum, Chestnut Hill, Mass.  
2024-25 Women's Basketball

**Game Time:** 7:00 PM  
**Game Duration:** 1:44  
**Attendance:** 2,879

**Officials:** Tiara Cruse, Bryan Brunette, Brandon Enterline

Game Time	BCE	Score	Diff	UND
07:14	0 TOMLINSON A foul personal (1 - 2)			5 MILES O foul drawn (1)
07:14	23 JACKSON K substitution out			
07:14	32 SIDBERRY T substitution in			
07:01				20 KING L 2pt FG outside the paint, jump shot missed
06:57	32 SIDBERRY T defensive rebound (5)			
06:52	10 NDIAYE N 2pt FG in the paint, driving layup blocked			
06:52				32 KARLEN L block (1)
06:48	24 WAGGONER D offensive rebound (3)			
06:47	24 WAGGONER D 2pt FG second chance in the paint, layup made (6)	<b>57-72</b>	<b>-15</b>	
06:35	0 TOMLINSON A foul shooting (2 - 3)			5 MILES O foul drawn (2)
06:35		<b>57-73</b>	<b>-16</b>	5 MILES O free throw 1 - 2 made (11)
06:35		<b>57-74</b>	<b>-17</b>	5 MILES O free throw 2 - 2 made (12)
06:19	32 SIDBERRY T 2pt FG in the paint, layup blocked			
06:19				20 KING L block (1)
06:15				11 CITRON S defensive rebound (7)
06:07				20 KING L 2pt FG in the paint, layup blocked
06:07	10 NDIAYE N block (1)			
06:07	10 NDIAYE N defensive rebound (4)			
06:07	10 NDIAYE N foul drawn (1)			20 KING L foul personal (3 - 3)
06:07	0 TOMLINSON A substitution out			
06:07	2 IVEY K substitution in			
06:07				20 KING L substitution out
06:07				13 KOVAL K substitution in
05:55	24 WAGGONER D turnover travel (5)			
05:36				13 KOVAL K 2pt FG from turnover in the paint, turnaround jump shot missed
05:34	defensive rebound (31)			
05:06	10 NDIAYE N 2pt FG in the paint, driving layup blocked			
05:06				13 KOVAL K block (1)
05:01				32 KARLEN L defensive rebound (3)
05:00	30 TODD T foul shooting (2 - 4)			11 CITRON S foul drawn (2)
05:00	Timeout media			
05:00	32 SIDBERRY T substitution out			
05:00	23 JACKSON K substitution in			
05:00				3 HIDALGO H substitution out
05:00				8 PROSPER C substitution in
05:00		<b>57-75</b>	<b>-18</b>	11 CITRON S free throw 1 - 2 made (8)
05:00		<b>57-76</b>	<b>-19</b>	11 CITRON S free throw 2 - 2 made (9)
04:43	23 JACKSON K 2pt FG in the paint, jump shot blocked			
04:43				13 KOVAL K block (2)
04:39				13 KOVAL K defensive rebound (2)
04:34		<b>57-78</b>	<b>-21</b>	5 MILES O 2pt FG in the paint, driving layup made (14)
04:19	23 JACKSON K 2pt FG outside the paint, jump shot missed			
04:15	30 TODD T offensive rebound (1)			
04:14	30 TODD T turnover lost ball (3)			5 MILES O steal (2)
04:11	30 TODD T steal (2)			5 MILES O turnover lost ball (3)
04:08	30 TODD T 2pt FG from turnover in the paint, layup missed			
04:05				13 KOVAL K defensive rebound (3)





**Notre Dame at Boston College**

01/23/25 Conte Forum, Chestnut Hill, Mass.  
2024-25 Women's Basketball

**Game Time:** 7:00 PM  
**Game Duration:** 1:44  
**Attendance:** 2,879

**Officials:** Tiara Cruse, Bryan Brunette, Brandon Enterline

Game Time	BCE	Score	Diff	UND
03:57		<b>57-80</b>	<b>-23</b>	5 MILES O 2pt FG outside the paint, pull up jump shot made (16)
03:41	23 JACKSON K 2pt FG in the paint, step back jump shot missed			
03:38				11 CITRON S defensive rebound (8)
03:15		<b>57-83</b>	<b>-26</b>	32 KARLEN L 3pt FG , jump shot made (9)
03:15				5 MILES O assist (3)
02:53	30 TODD T 2pt FG outside the paint, pull up jump shot missed			
02:51				11 CITRON S defensive rebound (9)
02:51	2 IVEY K substitution out			
02:51	10 NDIAYE N substitution out			
02:51	24 WAGGONER D substitution out			
02:51	30 TODD T substitution out			
02:51	0 TOMLINSON A substitution in			
02:51	21 DALEY A substitution in			
02:51	32 SIDBERRY T substitution in			
02:51	33 SAMUEL S substitution in			
02:51				5 MILES O substitution out
02:51				11 CITRON S substitution out
02:51				2 RISCH E substitution in
02:51				3 HIDALGO H substitution in
02:34	33 SAMUEL S foul personal (5 - 5)			13 KOVAL K foul drawn (2)
02:34	33 SAMUEL S substitution out			
02:34	13 GREENE T substitution in			
02:34		<b>57-84</b>	<b>-27</b>	13 KOVAL K free throw 1 - 2 made (1)
02:34		<b>57-85</b>	<b>-28</b>	13 KOVAL K free throw 2 - 2 made (2)
02:23	0 TOMLINSON A 3pt FG , jump shot missed			
02:19	13 GREENE T offensive rebound (1)			
02:05	0 TOMLINSON A 3pt FG second chance, jump shot missed			
02:01				2 RISCH E defensive rebound (1)
01:58	13 GREENE T steal (1)			2 RISCH E turnover bad pass (1)
01:51	21 DALEY A 2pt FG from turnover in the paint, pull up jump shot missed			
01:47	21 DALEY A offensive rebound (8)			
01:47	21 DALEY A foul drawn (3)			32 KARLEN L foul personal (1 - 4)
01:44	21 DALEY A foul drawn (4)			3 HIDALGO H foul shooting (3 - 5)
01:44	21 DALEY A free throw 1 - 2 made (4)	<b>58-85</b>	<b>-27</b>	
01:44	21 DALEY A free throw 2 - 2 made (5)	<b>59-85</b>	<b>-26</b>	
01:33				3 HIDALGO H 2pt FG outside the paint, turnaround jump shot missed
01:30	21 DALEY A defensive rebound (9)			
01:20	21 DALEY A 2pt FG outside the paint, pull up jump shot missed			
01:19	23 JACKSON K offensive rebound (2)			
01:19	23 JACKSON K foul drawn (1)			2 RISCH E foul shooting (1 - 6)
01:19				3 HIDALGO H substitution out
01:19				25 CERNUGEL S substitution in
01:19	23 JACKSON K free throw 1 - 2 made (5)	<b>60-85</b>	<b>-25</b>	
01:19	23 JACKSON K free throw 2 - 2 made (6)	<b>61-85</b>	<b>-24</b>	
01:12	23 JACKSON K steal (1)			2 RISCH E turnover bad pass (2)
01:07	21 DALEY A 2pt FG from turnover in the paint, driving layup missed			



Official Basketball Play by Play - 4th Period

### Notre Dame at Boston College

01/23/25 Conte Forum, Chestnut Hill, Mass.  
2024-25 Women's Basketball

Game Time: 7:00 PM

Game Duration: 1:44

Attendance: 2,879

Officials: Tiara Cruse, Bryan Brunette, Brandon Enterline

Game Time	BCE	Score	Diff	UND
01:03				32 KARLEN L defensive rebound (4)
00:50		<b>61-87</b>	<b>-26</b>	2 RISCH E 2pt FG in the paint, layup made (2)
00:50				13 KOVAL K assist (2)
00:35	13 GREENE T 2pt FG in the paint, step back jump shot missed			
00:32	21 DALEY A offensive rebound (10)			
00:34	21 DALEY A foul drawn (5)			25 CERNUGEL S foul personal (1 - 7)
00:34	21 DALEY A free throw 1 - 2 made (6)	<b>62-87</b>	<b>-25</b>	
00:34	21 DALEY A free throw 2 - 2 made (7)	<b>63-87</b>	<b>-24</b>	
00:18		<b>63-89</b>	<b>-26</b>	2 RISCH E 2pt FG in the paint, jump shot made (4)
00:18				13 KOVAL K assist (3)
00:04	23 JACKSON K turnover bad pass (1)			8 PROSPER C steal (1)
<b>END OF GAME</b>				
<b>BCE 63-89 UND</b>				



Officials: Tiara Cruse, Bryan Brunette, Brandon Enterline

Notre Dame - 21

NO.	Name	F	Min	FG			Rebounds			Fouls		TP	AS	TO	ST	Blocks		+/-
				M-A	M-A	M-A	OR	DR	TOT	PF	FD					BS	BA	
20	Liatu King	F	03:53	0-3	0-0	0-0	0	0	0	1	0	0	1	0	0	1	1	-3
21	Maddy Westbeld	F	00:34	0-1	0-1	0-0	0	0	0	1	0	0	0	0	0	0	0	0
3	Hannah Hidalgo	G	06:32	1-2	0-0	0-0	0	0	0	2	0	2	0	1	2	0	0	-3
5	Olivia Miles	G	07:09	2-3	0-1	2-2	0	0	0	0	2	6	1	1	1	0	0	6
11	Sonia Citron	G	05:03	0-0	0-0	2-2	0	3	3	0	1	2	0	0	0	0	0	9
32	Liza Karlen		09:26	1-1	1-1	0-0	0	3	3	1	1	3	0	0	0	1	0	6
13	Kate Koval		06:07	0-1	0-0	2-2	0	2	2	0	1	2	2	0	0	2	0	9
8	Cassandre Prosper		07:06	1-2	0-0	0-0	1	0	1	0	0	2	0	0	1	0	0	6
2	Emma Risch		02:51	2-2	0-0	0-0	0	1	1	1	0	4	0	2	0	0	0	0
25	Sarah Cernugel		01:19	0-0	0-0	0-0	0	0	0	1	0	0	0	0	0	0	0	0
Team							0	0	0			0						
<b>Totals</b>				7-15	1-3	6-6	1	9	10	7	5	21	4	4	4	4	1	6

Shooting By Period		
4 <sup>th</sup> FG%	7-15	46.7%
3PT%	1-3	33.3%
FT%	6-6	100%
GM FG%	7-15	46.7%
3PT%	1-3	33.3%
FT%	6-6	100.0%

Dead Ball Rebounds: 0, 0

Technical Fouls::NONE

Boston College - 15

NO.	Name	F	Min	FG			Rebounds			Fouls		TP	AS	TO	ST	Blocks		+/-
				M-A	M-A	M-A	OR	DR	TOT	PF	FD					BS	BA	
32	Teya Sidberry	F	05:05	0-1	0-0	0-0	0	1	1	0	0	0	0	0	0	0	1	0
2	Kaylah Ivey	G	03:50	0-0	0-0	0-0	0	0	0	0	0	0	0	0	0	0	0	-7
21	Andrea Daley	G	02:51	0-3	0-0	4-4	2	1	3	0	3	4	0	0	0	0	0	0
24	Dontavia Waggoner	G	04:27	1-1	0-0	0-0	1	0	1	0	0	2	0	1	0	0	0	-9
30	T' yana Todd	G	07:09	1-3	1-1	2-2	1	0	1	1	1	5	0	1	1	0	0	-6
10	Nene Ndiaye		07:09	0-3	0-1	0-0	1	1	2	0	1	0	1	0	0	1	2	-6
0	Athena Tomlinson		06:10	0-2	0-2	0-0	0	1	1	2	1	0	0	1	0	0	0	1
23	Kennedi Jackson		07:46	1-5	0-0	2-2	1	1	2	0	1	4	0	1	1	0	1	-6
33	Savannah Samuel		02:59	0-0	0-0	0-0	0	1	1	2	0	0	0	1	0	0	0	3
13	Tatum Greene		02:34	0-1	0-0	0-0	1	0	1	0	0	0	0	0	1	0	0	0
Team							0	1	1			0						
<b>Totals</b>				3-19	1-4	8-8	7	7	14	5	7	15	1	5	3	1	4	-6

Shooting By Period		
4 <sup>th</sup> FG%	3-19	15.8%
3PT%	1-4	25.0%
FT%	8-8	100%
GM FG%	3-19	15.8%
3PT%	1-4	25.0%
FT%	8-8	100.0%

Dead Ball Rebounds: 0, 0

Technical Fouls::NONE

	UND	BCE
Biggest lead	28 (4 <sup>th</sup> 2:34)	0 (1 <sup>st</sup> 10:00)
Best Scoring Run	13(4 <sup>th</sup> 2:34)	4(4 <sup>th</sup> 6:47)
Lead Changes	0	
Times Tied	0	
Time with Lead	09:45	00:00

Points from	UND	BCE
Turnovers	2	2
Paint	10	4
Second Chance	2	8
Fast Breaks	2	0
Bench	11	4

Period by Period Scoring					
	1st	2nd	3rd	4th	TOT
UND	17	24	27	21	89
BCE	18	13	17	15	63



**Notre Dame at Boston College**

01/23/25 Conte Forum, Chestnut Hill, Mass.  
2024-25 Women's Basketball

Game Time: 7:00 PM  
Game Duration: 1:44  
Attendance: 2,879

Officials: Tiara Cruse, Bryan Brunette, Brandon Enterline

**Notre Dame - 48**

NO.	Name	F	Min	FG			Rebounds			Fouls		TP	AS	TO	ST	Blocks		+/-
				M-A	M-A	M-A	OR	DR	TOT	PF	FD					BS	BA	
20	Liattu King	F	10:58	1-4	0-0	0-0	0	2	2	2	1	2	1	0	1	1	1	2
21	Maddy Westbeld	F	03:57	2-3	0-1	0-0	1	1	2	3	0	4	0	0	0	0	0	4
3	Hannah Hidalgo	G	16:02	5-9	1-1	1-2	0	0	0	2	1	12	1	1	3	0	0	5
5	Olivia Miles	G	17:09	4-7	0-3	2-2	0	0	0	0	2	10	2	1	1	0	0	16
11	Sonia Citron	G	12:30	3-4	0-0	3-3	2	4	6	1	2	9	1	1	2	1	0	18
8	Cassandre Prosper		10:09	1-2	0-0	0-0	1	0	1	0	0	2	0	1	1	0	0	9
32	Liza Karlen		16:03	1-2	1-1	0-0	0	3	3	1	1	3	0	0	0	1	0	12
13	Kate Koval		09:02	0-1	0-0	2-2	1	2	3	0	2	2	3	0	0	2	0	14
2	Emma Risch		02:51	2-2	0-0	0-0	0	1	1	1	0	4	0	2	0	0	0	0
25	Sarah Cernugel		01:19	0-0	0-0	0-0	0	0	0	1	0	0	0	0	0	0	0	0
Team							0	1	1			0		0				
<b>Totals</b>				19-34	2-6	8-9	5	14	19	11	9	48	8	6	8	5	1	16

Shooting By Period		
3 <sup>rd</sup> FG%	12-19	63.2%
3PT%	1-3	33.3%
FT%	2-3	66.7%
4 <sup>th</sup> FG%	7-15	46.7%
3PT%	1-3	33.3%
FT%	6-6	100%
GM FG%	19-34	55.9%
3PT%	2-6	33.3%
FT%	8-9	88.9%

Dead Ball Rebounds: 1, 1

Technical Fouls::NONE

**Boston College - 32**

NO.	Name	F	Min	FG			Rebounds			Fouls		TP	AS	TO	ST	Blocks		+/-
				M-A	M-A	M-A	OR	DR	TOT	PF	FD					BS	BA	
32	Teya Sidberry	F	08:28	0-3	0-1	0-0	1	1	2	0	0	0	0	1	0	0	1	-4
2	Kaylah Ivey	G	08:59	0-1	0-1	0-0	0	0	0	1	1	0	0	1	0	0	0	-13
21	Andrea Daley	G	07:35	0-4	0-0	5-6	4	2	6	0	5	5	0	0	0	0	0	-6
24	Dontavia Waggoner	G	12:41	1-2	0-0	0-0	1	0	1	1	0	2	0	2	0	0	0	-17
30	T' yana Todd	G	17:09	4-6	1-1	2-2	1	0	1	1	1	11	1	2	2	0	0	-16
13	Tatum Greene		06:16	0-2	0-0	0-0	1	0	1	0	1	0	0	1	1	0	0	-1
33	Savannah Samuel		09:36	2-3	0-0	0-0	0	2	2	3	0	4	0	1	0	0	1	-3
10	Nene Ndiaye		13:34	2-6	0-1	0-0	1	1	2	1	1	4	2	0	1	1	2	-13
23	Kennedi Jackson		09:32	2-6	0-0	2-2	1	1	2	0	1	6	0	1	1	0	1	-8
0	Athena Tomlinson		06:10	0-2	0-2	0-0	0	1	1	2	1	0	0	1	0	0	0	1
Team							0	2	2			0		0				
<b>Totals</b>				11-35	1-6	9-10	10	10	20	9	11	32	3	10	5	1	5	-16

Shooting By Period		
3 <sup>rd</sup> FG%	8-16	50.0%
3PT%	0-2	0.0%
FT%	1-2	50%
4 <sup>th</sup> FG%	3-19	15.8%
3PT%	1-4	25.0%
FT%	8-8	100%
GM FG%	11-35	31.4%
3PT%	1-6	16.7%
FT%	9-10	90.0%

Dead Ball Rebounds: 0, 0

Technical Fouls::NONE

	UND	BCE
Biggest lead	28 (4 <sup>th</sup> 2:34)	0 (1 <sup>st</sup> 10:00)
Best Scoring Run	13(4 <sup>th</sup> 2:34)	4(4 <sup>th</sup> 6:47)
Lead Changes	0	
Times Tied	0	
Time with Lead	19:25	00:00

	UND	BCE
Points from		
Turnovers	10	6
Paint	32	16
Second Chance	11	8
Fast Breaks	8	3
Bench	11	14

Period by Period Scoring					
	1st	2nd	3rd	4th	TOT
UND	17	24	27	21	89
BCE	18	13	17	15	63



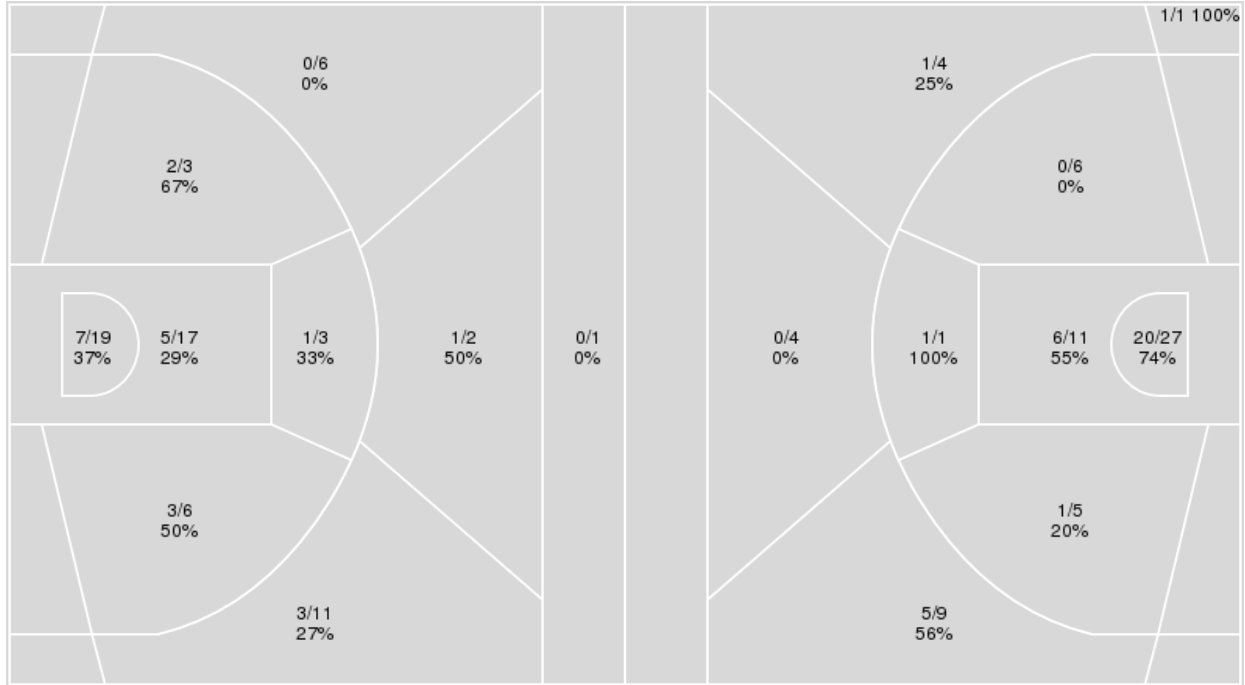
**Officials:** Tiara Cruse, Bryan Brunette, Brandon Enterline

{ Players => All; } FG Types => All; Results => All;

{ Players => All; } FG Types => All; Results => All;

**Boston College**

**Notre Dame**



<b>Boston College</b>	<b>M/A</b>	<b>%</b>
Field Goals	22/68	32
2 Points	18/48	38
3 Points	4/20	20
Free Throws	15/18	83

<b>Notre Dame</b>	<b>M/A</b>	<b>%</b>
Field Goals	35/68	51
2 Points	28/50	56
3 Points	7/18	39
Free Throws	12/14	86



**Notre Dame at Boston College**

01/23/25 Conte Forum, Chestnut Hill, Mass.  
2024-25 Women's Basketball

Officials: Tiara Cruse, Bryan Brunette, Brandon Enterline

**Notre Dame**

No	Name	Mins		Score		Points Diff		Points per Min		Assists		Rebounds		Steals		Turnovers	
		On	Off	On	Off	On	Off	On	Off	On	Off	On	Off	On	Off	On	Off
2	Emma Risch	02:51	37:09	6 - 6	83 - 57	0	26	2.11	2.23	2	16	2	40	1	11	2	15
3	Hannah Hidalgo	33:33	06:27	66 - 54	23 - 9	12	14	1.97	3.57	13	5	35	7	9	3	14	3
5	Olivia Miles	31:21	08:39	74 - 48	15 - 15	26	0	2.36	1.73	13	5	35	7	11	1	13	4
8	Cassandre Prosper	20:53	19:07	46 - 39	43 - 24	7	19	2.20	2.25	11	7	18	24	5	7	11	6
11	Sonia Citron	28:47	11:13	71 - 36	18 - 27	35	-9	2.47	1.60	13	5	34	8	9	3	9	8
13	Kate Koval	11:57	28:03	26 - 11	63 - 52	15	11	2.18	2.25	4	14	13	29	3	9	6	11
20	Liatu King	25:22	14:38	52 - 42	37 - 21	10	16	2.05	2.53	11	7	28	14	8	4	12	5
21	Maddy Westbeld	19:39	20:21	47 - 34	42 - 29	13	13	2.39	2.06	12	6	20	22	6	6	7	10
25	Sarah Cernugel	01:19	38:41	4 - 4	85 - 59	0	26	3.04	2.20	2	16	1	41	1	11	1	16
32	Liza Karlen	24:18	15:42	53 - 41	36 - 22	12	14	2.18	2.29	9	9	24	18	7	5	10	7

**Boston College**

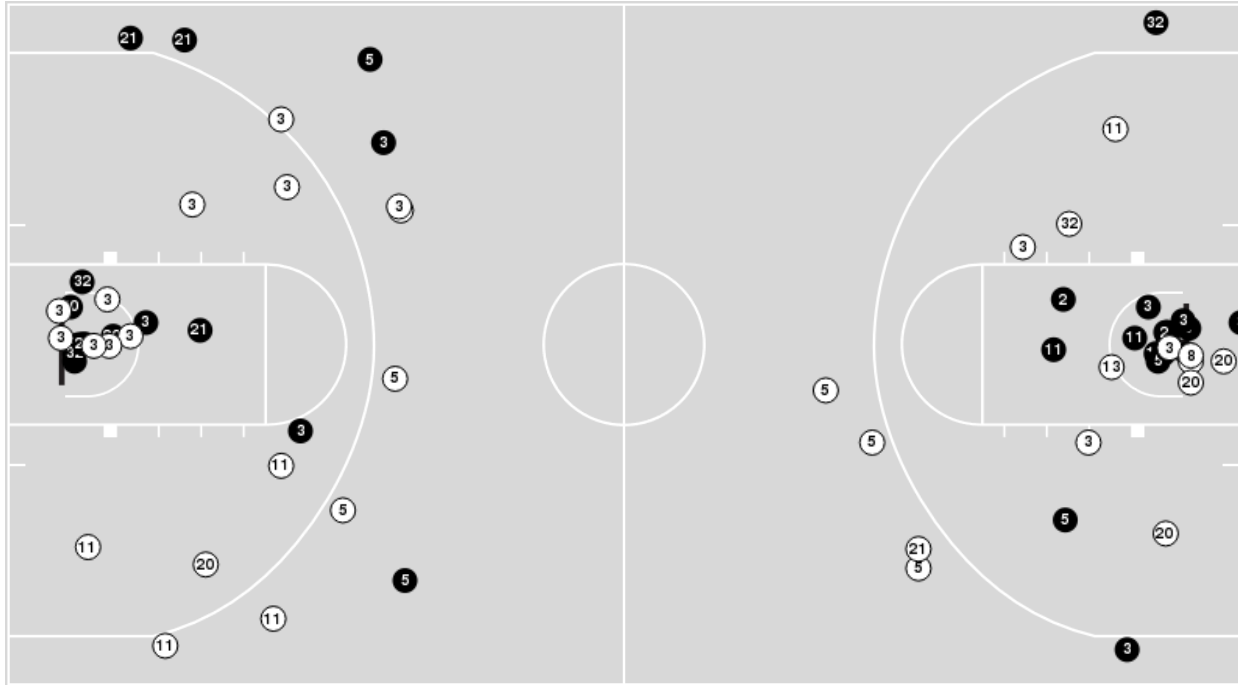
No	Name	Mins		Score		Points Diff		Points per Min		Assists		Rebounds		Steals		Turnovers	
		On	Off	On	Off	On	Off	On	Off	On	Off	On	Off	On	Off	On	Off
0	Athena Tomlinson	06:10	33:50	13 - 12	50 - 77	1	-27	2.11	1.48	1	6	11	26	2	8	3	17
2	Kaylah Ivey	19:52	20:08	27 - 51	36 - 38	-24	-2	1.36	1.79	4	3	17	20	3	7	11	9
10	Nene Ndiaye	23:43	16:17	36 - 55	27 - 34	-19	-7	1.52	1.66	4	3	20	17	6	4	13	7
13	Tatum Greene	10:17	29:43	21 - 24	42 - 65	-3	-23	2.04	1.41	3	4	9	28	3	7	5	15
21	Andrea Daley	22:52	17:08	32 - 43	31 - 46	-11	-15	1.40	1.81	1	6	23	14	7	3	12	8
23	Kennedi Jackson	09:32	30:28	17 - 25	46 - 64	-8	-18	1.78	1.51	1	6	10	27	3	7	5	15
24	Dontavia Waggoner	23:56	16:04	29 - 56	34 - 33	-27	1	1.21	2.12	5	2	20	17	7	3	12	8
30	Tyana Todd	35:56	04:04	54 - 75	9 - 14	-21	-5	1.50	2.21	6	1	32	5	8	2	18	2
32	Teya Sidberry	26:56	13:04	42 - 57	21 - 32	-15	-11	1.56	1.61	4	3	27	10	8	2	12	8
33	Savannah Samuel	20:46	19:14	44 - 47	19 - 42	-3	-23	2.12	0.99	6	1	16	21	3	7	9	11



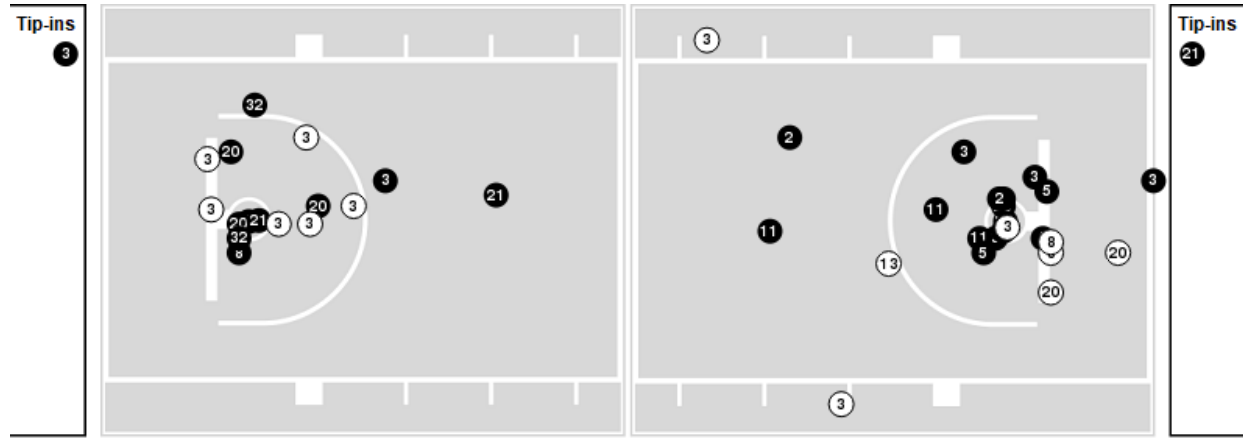
**Officials:** Tiara Cruse, Bryan Brunette, Brandon Enterline

Players => AllFG Types=>AllResults=>All  
**Notre Dame**

**All Field Goals**



**Blow Up Chart**



● Made    ○ Missed    N - Player Number

Notre Dame	M/A	%
Field Goals	35/68	51
2 Points	28/50	56
3 Points	7/18	39
Free Throws	12/14	86

Notre Dame	M/A	%
Points in the Paint	52 (26 / 38)	68
Fast Break Points	15 (8/8)	100
Second Chance Points	22 (11/14)	79
Effective FG%	57	

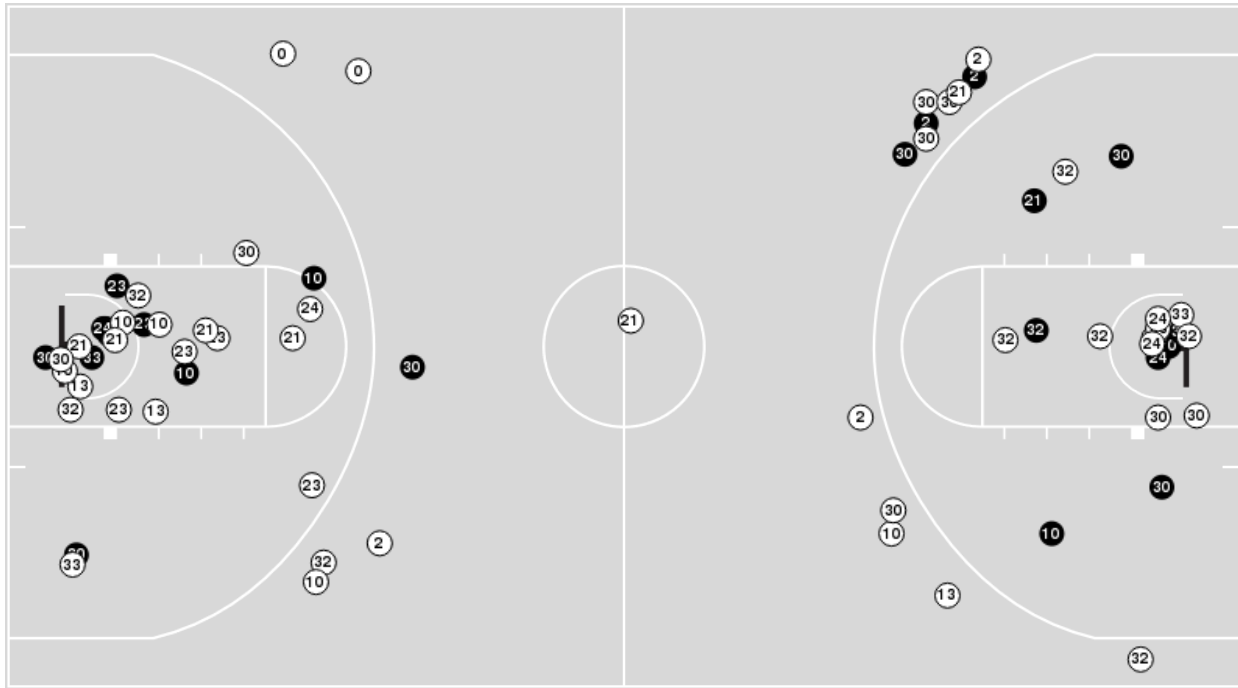


**Officials:** Tiara Cruse, Bryan Brunette, Brandon Enterline

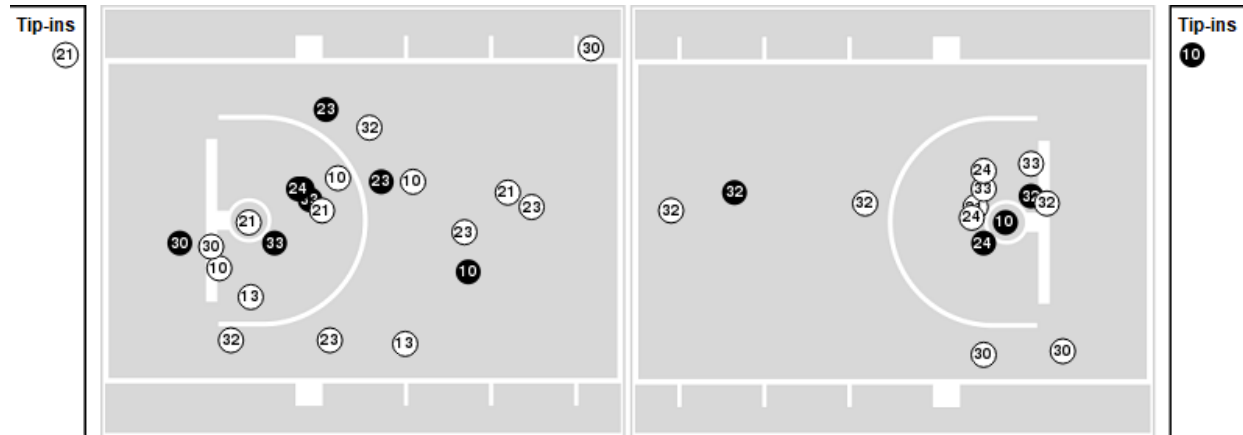
Players => AllFG Types=>AllResults=>All

**Boston College**

**All Field Goals**



**Blow Up Chart**



● Made ○ Missed N - Player Number

Boston College	M/A	%
Field Goals	22/68	32
2 Points	18/48	38
3 Points	4/20	20
Free Throws	15/18	83

Boston College	M/A	%
Points in the Paint	24 (12 / 36)	33
Fast Break Points	6 (4/6)	67
Second Chance Points	16 (11/20)	55
Effective FG%	35	





**Notre Dame at Boston College**

01/23/25 Conte Forum, Chestnut Hill, Mass.  
2024-25 Women's Basketball

**Game Time:** 7:00 PM  
**Game Duration:** 1:44  
**Attendance:** 2,879

**Officials:** Tiara Cruse, Bryan Brunette, Brandon Enterline

**Notre Dame**

Lineup	Quarter On	Time On	Quarter Off	Time Off	Time on Court	Score	Score Diff	Reb	Stl	Tov	Ass	PPP
3- Hidalgo H/ 5- Miles O/ 11- Citron S/ 20- King L/ 21- Westbeld M/	1	10:00	1	07:01	02:59	8-5	3	4	2	1	2	1.3333
3- Hidalgo H/ 5- Miles O/ 8- Prosper C/ 20- King L/ 21- Westbeld M/	1	07:01	1	05:48	01:13	0-4	-4	0	0	2	0	0.0000
3- Hidalgo H/ 8- Prosper C/ 11- Citron S/ 21- Westbeld M/ 32- Karlen L/	1	05:48	1	02:13	03:35	9-8	1	2	0	0	3	1.6544
3- Hidalgo H/ 8- Prosper C/ 11- Citron S/ 13- Koval K/ 20- King L/	1	02:13	2	10:00	02:13	0-1	-1	3	0	2	0	0.0000
3- Hidalgo H/ 5- Miles O/ 11- Citron S/ 20- King L/ 21- Westbeld M/	2	10:00	2	06:35	03:25	10-5	5	6	0	0	3	1.6667
5- Miles O/ 8- Prosper C/ 11- Citron S/ 20- King L/ 21- Westbeld M/	2	06:35	2	05:22	01:13	8-3	5	1	1	0	2	2.6667
5- Miles O/ 8- Prosper C/ 20- King L/ 21- Westbeld M/ 32- Karlen L/	2	05:22	2	04:06	01:16	0-2	-2	1	0	1	0	0.0000
3- Hidalgo H/ 5- Miles O/ 8- Prosper C/ 21- Westbeld M/ 32- Karlen L/	2	04:06	2	02:52	01:14	2-3	-1	1	0	1	0	1.0638
3- Hidalgo H/ 5- Miles O/ 11- Citron S/ 21- Westbeld M/ 32- Karlen L/	2	02:52	2	02:05	00:47	2-0	2	2	1	1	0	1.0000
3- Hidalgo H/ 5- Miles O/ 11- Citron S/ 20- King L/ 32- Karlen L/	2	02:05	2	00:41	01:23	0-0	0	2	0	2	0	0.0000
3- Hidalgo H/ 5- Miles O/ 11- Citron S/ 13- Koval K/ 20- King L/	2	00:41	3	10:00	00:41	2-0	2	1	0	1	0	1.0638
3- Hidalgo H/ 5- Miles O/ 11- Citron S/ 20- King L/ 21- Westbeld M/	3	10:00	3	07:47	02:13	4-2	2	2	2	1	0	1.0000
3- Hidalgo H/ 5- Miles O/ 8- Prosper C/ 20- King L/ 21- Westbeld M/	3	07:47	3	06:37	01:10	4-2	2	1	0	0	2	2.0000
3- Hidalgo H/ 5- Miles O/ 8- Prosper C/ 20- King L/ 32- Karlen L/	3	06:37	3	05:14	01:23	2-3	-1	2	0	1	0	1.0000
3- Hidalgo H/ 5- Miles O/ 11- Citron S/ 20- King L/ 32- Karlen L/	3	05:14	3	02:55	02:19	8-6	2	2	1	0	1	1.5038
3- Hidalgo H/ 5- Miles O/ 11- Citron S/ 13- Koval K/ 32- Karlen L/	3	02:55	3	00:30	02:25	7-4	3	2	1	0	1	1.7500
5- Miles O/ 8- Prosper C/ 11- Citron S/ 13- Koval K/ 32- Karlen L/	3	00:30	4	10:00	00:30	2-0	2	0	0	0	0	2.0000
3- Hidalgo H/ 5- Miles O/ 8- Prosper C/ 20- King L/ 21- Westbeld M/	4	10:00	4	09:26	00:34	0-0	0	0	0	0	0	0.0000
3- Hidalgo H/ 5- Miles O/ 8- Prosper C/ 20- King L/ 32- Karlen L/	4	09:26	4	07:54	01:32	4-7	-3	1	2	1	1	0.8000
3- Hidalgo H/ 5- Miles O/ 11- Citron S/ 20- King L/ 32- Karlen L/	4	07:54	4	06:07	01:47	2-2	0	2	0	0	0	0.6944
3- Hidalgo H/ 5- Miles O/ 11- Citron S/ 13- Koval K/ 32- Karlen L/	4	06:07	4	05:00	01:07	0-0	0	1	0	0	0	0.0000
5- Miles O/ 8- Prosper C/ 11- Citron S/ 13- Koval K/ 32- Karlen L/	4	05:00	4	02:51	02:09	9-0	9	4	1	1	1	1.8443
2- Risch E/ 3- Hidalgo H/ 8- Prosper C/ 13- Koval K/ 32- Karlen L/	4	02:51	4	01:19	01:32	2-2	0	1	0	1	0	0.6944
2- Risch E/ 8- Prosper C/ 13- Koval K/ 25- Cernugel S/ 32- Karlen L/	4	01:19	4	00:00	01:19	4-4	0	1	1	1	2	1.3333



**Notre Dame at Boston College**

01/23/25 Conte Forum, Chestnut Hill, Mass.  
2024-25 Women's Basketball

Officials: Tiara Cruse, Bryan Brunette, Brandon Enterline

**Boston College**

Lineup	Quarter On	Time On	Quarter Off	Time Off	Time on Court	Score	Score Diff	Reb	Stl	Tov	Ass	PPP
2- Ivey K/ 21- Daley A/ 24- Waggoner D/ 30- Todd T/ 32- Sidberry T/	1	10:00	1	07:01	02:59	5-8	-3	1	0	2	0	0.8503
2- Ivey K/ 24- Waggoner D/ 30- Todd T/ 32- Sidberry T/ 33- Samuel S/	1	07:01	1	05:02	01:59	4-2	2	3	1	1	1	1.0000
2- Ivey K/ 21- Daley A/ 30- Todd T/ 32- Sidberry T/ 33- Samuel S/	1	05:02	1	04:50	00:12	0-0	0	0	0	0	0	0.0000
10- Ndiaye N/ 21- Daley A/ 30- Todd T/ 32- Sidberry T/ 33- Samuel S/	1	04:50	1	01:32	03:18	8-7	1	3	1	1	0	1.1628
10- Ndiaye N/ 13- Greene T/ 21- Daley A/ 30- Todd T/ 33- Samuel S/	1	01:32	1	01:05	00:27	1-0	1	1	0	1	0	0.5319
2- Ivey K/ 10- Ndiaye N/ 13- Greene T/ 21- Daley A/ 30- Todd T/	1	01:05	2	10:00	01:05	0-0	0	2	0	1	0	0.0000
2- Ivey K/ 24- Waggoner D/ 30- Todd T/ 32- Sidberry T/ 33- Samuel S/	2	10:00	2	08:29	01:31	3-5	-2	1	0	0	1	1.5000
2- Ivey K/ 21- Daley A/ 24- Waggoner D/ 30- Todd T/ 32- Sidberry T/	2	08:29	2	06:35	01:54	2-5	-3	3	0	1	1	0.6667
2- Ivey K/ 10- Ndiaye N/ 13- Greene T/ 32- Sidberry T/ 33- Samuel S/	2	06:35	2	05:22	01:13	3-8	-5	0	0	1	1	1.0000
13- Greene T/ 21- Daley A/ 30- Todd T/ 32- Sidberry T/ 33- Samuel S/	2	05:22	2	04:06	01:16	2-0	2	0	0	0	0	1.0000
10- Ndiaye N/ 21- Daley A/ 30- Todd T/ 32- Sidberry T/ 33- Samuel S/	2	04:06	2	02:52	01:14	3-2	1	2	0	0	0	1.5957
10- Ndiaye N/ 21- Daley A/ 24- Waggoner D/ 30- Todd T/ 32- Sidberry T/	2	02:52	3	10:00	02:52	0-4	-4	1	3	2	0	0.0000
2- Ivey K/ 21- Daley A/ 24- Waggoner D/ 30- Todd T/ 32- Sidberry T/	3	10:00	3	06:37	03:23	4-8	-4	4	1	2	0	0.6667
13- Greene T/ 21- Daley A/ 24- Waggoner D/ 30- Todd T/ 33- Samuel S/	3	06:37	3	06:25	00:12	1-0	1	0	0	0	0	1.1364
10- Ndiaye N/ 13- Greene T/ 24- Waggoner D/ 30- Todd T/ 33- Samuel S/	3	06:25	3	02:55	03:30	8-10	-2	1	1	1	2	1.3333
10- Ndiaye N/ 21- Daley A/ 24- Waggoner D/ 30- Todd T/ 33- Samuel S/	3	02:55	3	01:46	01:09	0-3	-3	1	0	1	0	0.0000
2- Ivey K/ 10- Ndiaye N/ 23- Jackson K/ 30- Todd T/ 33- Samuel S/	3	01:46	4	09:26	02:20	6-6	0	1	0	1	0	1.2295
0- Tomlinson A/ 10- Ndiaye N/ 23- Jackson K/ 30- Todd T/ 33- Samuel S/	4	09:26	4	07:18	02:08	5-4	1	3	0	2	1	1.0000
0- Tomlinson A/ 10- Ndiaye N/ 23- Jackson K/ 24- Waggoner D/ 30- Todd T/	4	07:18	4	07:14	00:04	0-0	0	0	0	0	0	0.0000
0- Tomlinson A/ 10- Ndiaye N/ 24- Waggoner D/ 30- Todd T/ 32- Sidberry T/	4	07:14	4	06:07	01:07	2-2	0	3	0	0	0	1.0000
2- Ivey K/ 10- Ndiaye N/ 24- Waggoner D/ 30- Todd T/ 32- Sidberry T/	4	06:07	4	05:00	01:07	0-0	0	1	0	1	0	0.0000
2- Ivey K/ 10- Ndiaye N/ 23- Jackson K/ 24- Waggoner D/ 30- Todd T/	4	05:00	4	02:51	02:09	0-9	-9	1	1	1	0	0.0000
0- Tomlinson A/ 21- Daley A/ 23- Jackson K/ 32- Sidberry T/ 33- Samuel S/	4	02:51	4	02:34	00:17	0-0	0	0	0	0	0	0.0000
0- Tomlinson A/ 13- Greene T/ 21- Daley A/ 23- Jackson K/ 32- Sidberry T/	4	02:34	4	00:00	02:34	6-6	0	5	2	1	0	1.0638



**Officials:** Tiara Cruse, Bryan Brunette, Brandon Enterline

**Notre Dame**

Lineup	Time	Score	Score Diff	Pts/Min	Reb	Stl	Tov	Ass	PPP
3- Hidalgo H/ 5- Miles O/ 11- Citron S/ 20- King L/ 21- Westbeld M/	08:37	22-12	10	2.5532	12	4	2	5	1.3750
3- Hidalgo H/ 5- Miles O/ 11- Citron S/ 20- King L/ 32- Karlen L/	05:29	10-8	2	1.8226	6	1	2	1	0.9804
3- Hidalgo H/ 8- Prosper C/ 11- Citron S/ 21- Westbeld M/ 32- Karlen L/	03:35	9-8	1	2.5116	2	0	0	3	1.6544
3- Hidalgo H/ 5- Miles O/ 11- Citron S/ 13- Koval K/ 32- Karlen L/	03:32	7-4	3	1.9811	3	1	0	1	1.4000
3- Hidalgo H/ 5- Miles O/ 8- Prosper C/ 20- King L/ 21- Westbeld M/	02:57	4-6	-2	1.3559	1	0	2	2	0.6667
3- Hidalgo H/ 5- Miles O/ 8- Prosper C/ 20- King L/ 32- Karlen L/	02:55	6-10	-4	2.0571	3	2	2	1	0.8571
5- Miles O/ 8- Prosper C/ 11- Citron S/ 13- Koval K/ 32- Karlen L/	02:39	11-0	11	4.1509	4	1	1	1	1.8707
3- Hidalgo H/ 8- Prosper C/ 11- Citron S/ 13- Koval K/ 20- King L/	02:13	0-1	-1	0.0000	3	0	2	0	0.0000
2- Risch E/ 3- Hidalgo H/ 8- Prosper C/ 13- Koval K/ 32- Karlen L/	01:32	2-2	0	1.3043	1	0	1	0	0.6944
2- Risch E/ 8- Prosper C/ 13- Koval K/ 25- Cernugel S/ 32- Karlen L/	01:19	4-4	0	3.0380	1	1	1	2	1.3333
5- Miles O/ 8- Prosper C/ 20- King L/ 21- Westbeld M/ 32- Karlen L/	01:16	0-2	-2	0.0000	1	0	1	0	0.0000
3- Hidalgo H/ 5- Miles O/ 8- Prosper C/ 21- Westbeld M/ 32- Karlen L/	01:14	2-3	-1	1.6216	1	0	1	0	1.0638
5- Miles O/ 8- Prosper C/ 11- Citron S/ 20- King L/ 21- Westbeld M/	01:13	8-3	5	6.5753	1	1	0	2	2.6667
3- Hidalgo H/ 5- Miles O/ 11- Citron S/ 21- Westbeld M/ 32- Karlen L/	00:47	2-0	2	2.5532	2	1	1	0	1.0000
3- Hidalgo H/ 5- Miles O/ 11- Citron S/ 13- Koval K/ 20- King L/	00:41	2-0	2	2.8708	1	0	1	0	1.0638



**Officials:** Tiara Cruse, Bryan Brunette, Brandon Enterline

**Boston College**

Lineup	Time	Score	Score Diff	Pts/Min	Reb	Stl	Tov	Ass	PPP
2- Ivey K/ 21- Daley A/ 24- Waggoner D/ 30- Todd T/ 32- Sidberry T/	08:16	11-21	-10	1.3306	8	1	5	1	0.7392
10- Ndiaye N/ 21- Daley A/ 30- Todd T/ 32- Sidberry T/ 33- Samuel S/	04:32	11-9	2	2.4265	5	1	1	0	1.2557
2- Ivey K/ 24- Waggoner D/ 30- Todd T/ 32- Sidberry T/ 33- Samuel S/	03:30	7-7	0	2.0000	4	1	1	2	1.1667
10- Ndiaye N/ 13- Greene T/ 24- Waggoner D/ 30- Todd T/ 33- Samuel S/	03:30	8-10	-2	2.2857	1	1	1	2	1.3333
10- Ndiaye N/ 21- Daley A/ 24- Waggoner D/ 30- Todd T/ 32- Sidberry T/	02:52	0-4	-4	0.0000	1	3	2	0	0.0000
0- Tomlinson A/ 13- Greene T/ 21- Daley A/ 23- Jackson K/ 32- Sidberry T/	02:34	6-6	0	2.3377	5	2	1	0	1.0638
2- Ivey K/ 10- Ndiaye N/ 23- Jackson K/ 30- Todd T/ 33- Samuel S/	02:20	6-6	0	2.5714	1	0	1	0	1.2295
2- Ivey K/ 10- Ndiaye N/ 23- Jackson K/ 24- Waggoner D/ 30- Todd T/	02:09	0-9	-9	0.0000	1	1	1	0	0.0000
0- Tomlinson A/ 10- Ndiaye N/ 23- Jackson K/ 30- Todd T/ 33- Samuel S/	02:08	5-4	1	2.3438	3	0	2	1	1.0000
13- Greene T/ 21- Daley A/ 30- Todd T/ 32- Sidberry T/ 33- Samuel S/	01:16	2-0	2	1.5789	0	0	0	0	1.0000
2- Ivey K/ 10- Ndiaye N/ 13- Greene T/ 32- Sidberry T/ 33- Samuel S/	01:13	3-8	-5	2.4658	0	0	1	1	1.0000
10- Ndiaye N/ 21- Daley A/ 24- Waggoner D/ 30- Todd T/ 33- Samuel S/	01:09	0-3	-3	0.0000	1	0	1	0	0.0000
0- Tomlinson A/ 10- Ndiaye N/ 24- Waggoner D/ 30- Todd T/ 32- Sidberry T/	01:07	2-2	0	1.7910	3	0	0	0	1.0000
2- Ivey K/ 10- Ndiaye N/ 24- Waggoner D/ 30- Todd T/ 32- Sidberry T/	01:07	0-0	0	0.0000	1	0	1	0	0.0000
2- Ivey K/ 10- Ndiaye N/ 13- Greene T/ 21- Daley A/ 30- Todd T/	01:05	0-0	0	0.0000	2	0	1	0	0.0000
10- Ndiaye N/ 13- Greene T/ 21- Daley A/ 30- Todd T/ 33- Samuel S/	00:27	1-0	1	2.2222	1	0	1	0	0.5319
0- Tomlinson A/ 21- Daley A/ 23- Jackson K/ 32- Sidberry T/ 33- Samuel S/	00:17	0-0	0	0.0000	0	0	0	0	0.0000
2- Ivey K/ 21- Daley A/ 30- Todd T/ 32- Sidberry T/ 33- Samuel S/	00:12	0-0	0	0.0000	0	0	0	0	0.0000
13- Greene T/ 21- Daley A/ 24- Waggoner D/ 30- Todd T/ 33- Samuel S/	00:12	1-0	1	5.0000	0	0	0	0	1.1364
0- Tomlinson A/ 10- Ndiaye N/ 23- Jackson K/ 24- Waggoner D/ 30- Todd T/	00:04	0-0	0	0.0000	0	0	0	0	0.0000