



**SMU at Notre Dame**

02/19/25 Purcell Pavilion at the Joyce Center, Notre Dame  
2024-25 Men's Basketball

Game Time: 7:00 PM  
Game Duration: 2:03  
Attendance: 4,332

Officials: Bert Smith, Tommy Morrissey, Eric Lewis

SMU - 97

Record: 20-6 (11-4)

NO.	Name	F	Min	FG			3P			FT			Rebounds			Fouls		TP	AS	TO	ST	Blocks		+/-
				M-A	M-A	M-A	OR	DR	TOT	PF	FD	OR	DR	TOT	BS	BA								
33	Matt Cross	F	26:11	5-9	2-4	2-2	2	7	9	2	1	14	2	1	14	2	1	3	1	0	21			
24	Samet Yigitoglu	C	23:04	6-10	0-1	2-5	2	4	6	2	6	14	0	3	2	0	3	2	0	16				
0	B.J. Edwards	G	29:43	3-5	1-1	1-2	0	6	6	1	1	8	4	2	3	0	0	21						
3	Chuck Harris	G	30:38	4-10	1-5	2-2	1	5	6	2	2	11	7	2	1	0	0	19						
8	Kario Oquendo	G	24:40	8-10	3-5	6-7	0	1	1	2	4	25	2	0	0	0	0	21						
5	Tibet Gorener		14:24	1-1	1-1	1-2	0	0	0	1	1	4	0	0	1	0	0	1						
10	AJ George		15:10	1-1	0-0	5-5	2	1	3	2	3	7	0	1	0	1	0	9						
22	Keon Ambrose-Hylton		14:18	1-4	0-2	0-0	3	2	5	1	0	2	1	2	0	0	0	9						
20	Jerrell Colbert		09:44	2-3	0-0	0-0	1	0	1	3	1	4	1	1	0	0	1	3						
21	Yohan Traore		12:08	3-5	0-1	2-2	1	1	2	3	2	8	0	0	0	0	0	0						
Team							1	3	4			0			1									
<b>Totals</b>				34-58	8-20	21-27	13	30	43	19	21	97	17	13	10	2	1	24						

Shooting By Period		
1 <sup>st</sup> FG%	21-29	72.4%
3PT%	4-8	50.0%
FT%	4-7	57.1%
2 <sup>nd</sup> FG%	13-29	44.8%
3PT%	4-12	33.3%
FT%	17-20	85%
GM FG%	34-58	58.6%
3PT%	8-20	40.0%
FT%	21-27	77.8%

Dead Ball Rebounds: 3, 0

Technical Fouls::NONE

Notre Dame - 73

Record: 11-15 (5-10)

NO.	Name	F	Min	FG			3P			FT			Rebounds			Fouls		TP	AS	TO	ST	Blocks		+/-
				M-A	M-A	M-A	OR	DR	TOT	PF	FD	OR	DR	TOT	BS	BA								
7	Tae Davis	F	23:35	5-8	1-2	2-5	2	3	5	2	4	13	1	3	0	0	0	0	0	-19				
14	Kebba Njie	F	09:37	0-0	0-0	0-0	0	0	0	2	0	0	0	1	0	0	0	0	-18					
3	Markus Burton	G	23:22	1-6	0-3	0-0	0	0	0	3	0	2	3	4	1	0	0	-23						
4	Sir Mohammed	G	22:57	3-7	0-2	2-4	1	1	2	4	5	8	2	0	0	0	1	-13						
11	Braeden Shrewsbury	G	27:23	6-11	5-8	4-4	0	2	2	2	1	21	0	1	0	0	1	-24						
1	Julian Roper II		10:04	1-2	1-2	0-2	0	0	0	0	1	3	0	0	1	0	0	-5						
20	J.R. Konieczny		23:23	2-6	1-3	2-3	0	2	2	1	1	7	3	1	0	0	0	-1						
25	Nikita Konstantynovskiy		08:28	0-1	0-0	0-0	0	2	2	3	1	0	0	0	0	0	0	-5						
41	Matt Allocco		18:45	0-3	0-3	0-0	0	0	0	2	0	0	2	1	0	0	0	-15						
12	Garrett Sundra		13:57	3-4	2-3	3-3	1	1	2	0	3	11	0	1	1	1	0	1						
5	Cole Certa		10:13	0-3	0-3	2-2	0	1	1	2	1	2	1	0	0	0	0	-3						
2	Logan Imes		08:16	2-4	0-2	2-2	0	1	1	0	2	6	2	0	2	0	0	5						
Team							2	1	3			0			0									
<b>Totals</b>				23-55	10-31	17-25	6	14	20	21	19	73	14	12	5	1	2	-24						

Shooting By Period		
1 <sup>st</sup> FG%	7-22	31.8%
3PT%	3-12	25.0%
FT%	8-11	72.7%
2 <sup>nd</sup> FG%	16-33	48.5%
3PT%	7-19	36.8%
FT%	9-14	64.3%
GM FG%	23-55	41.8%
3PT%	10-31	32.3%
FT%	17-25	68.0%

Dead Ball Rebounds: 4, 0

Technical Fouls::NONE

	SMU	UND
Biggest lead	34 (2 <sup>nd</sup> 11:40)	0 (1 <sup>st</sup> 20:00)
Best Scoring Run	10 (1 <sup>st</sup> 9:40)	7 (2 <sup>nd</sup> 3:47)
Lead Changes	0	
Times Tied	0	
Time with Lead	39:27	00:00

Points from	SMU	UND
Turnovers	16	21
Paint	46	20
Second Chance	17	4
Fast Breaks	15	11
Bench	25	29

	Period by Period Scoring		
	1st	2nd	TOT
SMU	50	47	97
UND	25	48	73



**Period 1**

**Quarter Starters:**

<b>UND</b>	3 Burton M	4 Mohammed S	7 Davis T	11 Shrewsberry B	14 Njie K
<b>SMU</b>	0 Edwards B	3 Harris C	8 Oquendo K	24 Yigitoglu S	33 Cross M

Game Time	UND	Score	Diff	SMU
20:00	14 NJIE K jumpball won			24 YIGITOGU S jumpball lost
19:44	7 DAVIS T 2pt FG in the paint, floating jump shot missed			
19:41				33 CROSS M defensive rebound (1)
19:27		0-2	-2	0 EDWARDS B 2pt FG in the paint, jump shot made (2)
19:12	4 MOHAMMED S 3pt FG , jump shot missed			
19:08				3 HARRIS C defensive rebound (1)
18:38		0-4	-4	3 HARRIS C 2pt FG outside the paint, jump shot made (2)
18:21	3 BURTON M turnover bad pass (1)			0 EDWARDS B steal (1)
18:18		0-6	-6	8 OQUENDO K 2pt FG fast break from turnover in the paint, dunk, made (2)
18:18				0 EDWARDS B assist (1)
18:17	Timeout 30 Sec			
18:05	7 DAVIS T 3pt FG , jump shot made (3)	3-6	-3	
18:05	3 BURTON M assist (1)			
17:45		3-8	-5	24 YIGITOGU S 2pt FG in the paint, hook shot made (2)
17:32	11 SHREWSBERRY B 3pt FG , jump shot missed			
17:29				defensive rebound (3)
17:13				3 HARRIS C 2pt FG outside the paint, floating jump shot missed
17:10	7 DAVIS T defensive rebound (1)			
16:51	3 BURTON M turnover bad pass (2)			24 YIGITOGU S steal (1)
16:51				24 YIGITOGU S turnover travel (1)
16:29	4 MOHAMMED S 3pt FG from turnover, jump shot missed			
16:28				defensive rebound (4)
16:06				24 YIGITOGU S 2pt FG in the paint, layup missed
16:03	11 SHREWSBERRY B defensive rebound (1)			
15:51	3 BURTON M 3pt FG , jump shot missed			
15:48				0 EDWARDS B defensive rebound (1)
15:38		3-11	-8	8 OQUENDO K 3pt FG , jump shot made (5)
15:38				33 CROSS M assist (1)
15:12	14 NJIE K turnover lost ball (1)			33 CROSS M steal (1)
15:03		3-13	-10	3 HARRIS C 2pt FG from turnover outside the paint, step back jump shot made (4)
14:40	7 DAVIS T foul drawn (1)			8 OQUENDO K foul shooting (1 - 1)
14:40	Timeout media			
14:40	3 BURTON M substitution out			
14:40	4 MOHAMMED S substitution out			
14:40	11 SHREWSBERRY B substitution out			
14:40	14 NJIE K substitution out			
14:40	1 ROPER II J substitution in			
14:40	20 KONIECZNY J substitution in			
14:40	25 KONSTANTYNOVSKYI N substitution in			
14:40	41 ALLOCCO M substitution in			
14:40	7 DAVIS T free throw 1 - 2 missed			
14:40	offensive dead ball rebound (1)			



Official Basketball Play by Play - First Half  
**SMU at Notre Dame**  
 02/19/25 Purcell Pavilion at the Joyce Center, Notre Dame  
 2024-25 Men's Basketball

**Game Time:** 7:00 PM  
**Game Duration:** 2:03  
**Attendance:** 4,332

**Officials:** Bert Smith, Tommy Morrissey, Eric Lewis

Game Time	UND	Score	Diff	SMU
14:39	7 DAVIS T free throw 2 - 2 missed			
14:38				24 YIGITOGU S defensive rebound (1)
14:12				3 HARRIS C turnover out of bounds (1)
14:12	7 DAVIS T substitution out			
14:12	12 SUNDRA G substitution in			
13:48	20 KONIECZNY J 2pt FG from turnover outside the paint, floating jump shot missed			
13:45				33 CROSS M defensive rebound (2)
13:37		<b>3-15</b>	<b>-12</b>	8 OQUENDO K 2pt FG in the paint, driving layup made (7)
13:22	20 KONIECZNY J foul drawn (1)			33 CROSS M foul shooting (1 - 2)
13:22	20 KONIECZNY J free throw 1 - 3 missed			
13:22	offensive dead ball rebound (2)			
13:22	20 KONIECZNY J free throw 2 - 3 made (1)	<b>4-15</b>	<b>-11</b>	
13:22				8 OQUENDO K substitution out
13:22				5 GORENER T substitution in
13:22	20 KONIECZNY J free throw 3 - 3 made (2)	<b>5-15</b>	<b>-10</b>	
12:53				0 EDWARDS B 2pt FG outside the paint, jump shot missed
12:49				24 YIGITOGU S offensive rebound (2)
12:48		<b>5-17</b>	<b>-12</b>	24 YIGITOGU S 2pt FG second chance in the paint, layup made (4)
12:36	20 KONIECZNY J turnover lost ball (1)			33 CROSS M steal (2)
12:27				3 HARRIS C 3pt FG from turnover, jump shot missed
12:24	12 SUNDRA G defensive rebound (1)			
12:22				3 HARRIS C substitution out
12:22				33 CROSS M substitution out
12:22				10 GEORGE A substitution in
12:22				22 AMBROSE-HYLTON K substitution in
12:07	12 SUNDRA G foul drawn (1)			22 AMBROSE-HYLTON K foul personal (1 - 3)
11:55	Timeout media			
11:55	1 ROPER II J substitution out			
11:55	12 SUNDRA G substitution out			
11:55	20 KONIECZNY J substitution out			
11:55	25 KONSTANTYNOVSKYI N substitution out			
11:55	41 ALLOCCO M substitution out			
11:55	3 BURTON M substitution in			
11:55	5 CERTA C substitution in			
11:55	7 DAVIS T substitution in			
11:55	11 SHREWSBERRY B substitution in			
11:55	14 NJIE K substitution in			
11:49	5 CERTA C 3pt FG , jump shot missed			
11:47	7 DAVIS T offensive rebound (2)			
11:30	3 BURTON M 3pt FG second chance, jump shot missed			
11:26				10 GEORGE A defensive rebound (1)
11:08	14 NJIE K foul shooting (1 - 1)			24 YIGITOGU S foul drawn (1)
11:08				24 YIGITOGU S free throw 1 - 2 missed
11:08				offensive dead ball rebound (1)
11:08				24 YIGITOGU S free throw 2 - 2 missed
11:06	7 DAVIS T defensive rebound (3)			
10:41	3 BURTON M turnover lost ball (3)			24 YIGITOGU S steal (2)
10:31				24 YIGITOGU S 3pt FG from turnover, jump shot missed



Official Basketball Play by Play - First Half  
**SMU at Notre Dame**  
 02/19/25 Purcell Pavilion at the Joyce Center, Notre Dame  
 2024-25 Men's Basketball

**Game Time:** 7:00 PM  
**Game Duration:** 2:03  
**Attendance:** 4,332

**Officials:** Bert Smith, Tommy Morrissey, Eric Lewis

Game Time	UND	Score	Diff	SMU
10:30				10 GEORGE A offensive rebound (2)
10:30		5-19	-14	10 GEORGE A 2pt FG from turnover second chance in the paint, layup made (2)
10:30	5 CERTA C foul shooting (1 - 2)			10 GEORGE A foul drawn (1)
10:30	5 CERTA C substitution out			
10:30	41 ALLOCCO M substitution in			
10:30				0 EDWARDS B substitution out
10:30				5 GORENER T substitution out
10:30				24 YIGITOGLU S substitution out
10:30				3 HARRIS C substitution in
10:30				8 OQUENDO K substitution in
10:30				20 COLBERT J substitution in
10:30		5-20	-15	10 GEORGE A free throw 1 - 1 made (3)
10:20	7 DAVIS T turnover lost ball (1)			
10:20	7 DAVIS T substitution out			
10:20	4 MOHAMMED S substitution in			
10:03		5-22	-17	8 OQUENDO K 2pt FG from turnover in the paint, floating jump shot made (9)
09:54	4 MOHAMMED S foul drawn (1)			20 COLBERT J foul personal (1 - 4)
09:45	3 BURTON M 3pt FG , jump shot missed			
09:42				8 OQUENDO K defensive rebound (1)
09:40		5-24	-19	8 OQUENDO K 2pt FG fast break in the paint, floating jump shot made (11)
09:40	41 ALLOCCO M foul shooting (1 - 3)			8 OQUENDO K foul drawn (1)
09:40		5-25	-20	8 OQUENDO K free throw fast break 1 - 1 made (12)
09:26	4 MOHAMMED S 2pt FG in the paint, floating jump shot made (2)	7-25	-18	
09:26	41 ALLOCCO M assist (1)			
09:12		7-28	-21	8 OQUENDO K 3pt FG , jump shot made (15)
09:12				20 COLBERT J assist (1)
08:43	11 SHREWSBERRY B 2pt FG in the paint, floating jump shot made (2)	9-28	-19	
08:25		9-30	-21	20 COLBERT J 2pt FG in the paint, alleyoop made (2)
08:25				3 HARRIS C assist (1)
08:19	11 SHREWSBERRY B 3pt FG fast break, jump shot made (5)	12-30	-18	
08:19	3 BURTON M assist (2)			
08:05		12-32	-20	20 COLBERT J 2pt FG in the paint, jump shot made (4)
08:05				3 HARRIS C assist (2)
07:39	11 SHREWSBERRY B 2pt FG outside the paint, jump shot blocked			
07:39				10 GEORGE A block (1)
07:38				3 HARRIS C defensive rebound (2)
07:38	14 NJIE K foul personal (2 - 4)			20 COLBERT J foul drawn (1)
07:38	4 MOHAMMED S substitution out			
07:38	11 SHREWSBERRY B substitution out			
07:38	14 NJIE K substitution out			
07:38	1 ROPER II J substitution in			
07:38	7 DAVIS T substitution in			
07:38	25 KONSTANTYNOVSKIY I N substitution in			
07:38				8 OQUENDO K substitution out
07:38				22 AMBROSE-HYLTON K substitution out



**Officials:** Bert Smith, Tommy Morrissey, Eric Lewis

Game Time	UND	Score	Diff	SMU
07:38				0 EDWARDS B substitution in
07:38				33 CROSS M substitution in
07:15				3 HARRIS C 3pt FG , jump shot missed
07:12	25 KONSTANTYNOVSKYI N defensive rebound (1)			
06:59	7 DAVIS T foul drawn (2)			3 HARRIS C foul personal (1 - 5)
06:45	7 DAVIS T 2pt FG in the paint, layup missed			
06:42				3 HARRIS C defensive rebound (3)
06:38				33 CROSS M 3pt FG , jump shot missed
06:35	defensive rebound (7)			
06:35	1 ROPER II J substitution out			
06:35	20 KONIECZNY J substitution in			
06:35				10 GEORGE A substitution out
06:35				20 COLBERT J substitution out
06:35				8 OQUENDO K substitution in
06:35				24 YIGITOGLU S substitution in
06:11	3 BURTON M 2pt FG outside the paint, jump shot made (2)	<b>14-32</b>	<b>-18</b>	
05:59		<b>14-34</b>	<b>-20</b>	24 YIGITOGLU S 2pt FG in the paint, hook shot made (6)
05:59				3 HARRIS C assist (3)
05:38	3 BURTON M 2pt FG in the paint, jump shot missed			
05:36				0 EDWARDS B defensive rebound (2)
05:25	25 KONSTANTYNOVSKYI N foul personal (1 - 5)			24 YIGITOGLU S foul drawn (2)
05:25	3 BURTON M substitution out			
05:25	11 SHREWSBERRY B substitution in			
05:22				3 HARRIS C 2pt FG outside the paint, jump shot missed
05:20				33 CROSS M offensive rebound (3)
05:03		<b>14-37</b>	<b>-23</b>	3 HARRIS C 3pt FG second chance, jump shot made (7)
05:03				33 CROSS M assist (2)
04:44	41 ALLOCCO M 3pt FG , step back jump shot missed			
04:40				0 EDWARDS B defensive rebound (3)
04:37		<b>14-39</b>	<b>-25</b>	0 EDWARDS B 2pt FG fast break in the paint, driving layup made (4)
04:17	41 ALLOCCO M substitution out			
04:17	2 IMES L substitution in			
04:06	2 IMES L 3pt FG , jump shot missed			
04:03				0 EDWARDS B defensive rebound (4)
03:52	25 KONSTANTYNOVSKYI N foul personal (2 - 6)			24 YIGITOGLU S foul drawn (3)
03:52	Timeout media			
03:52	25 KONSTANTYNOVSKYI N foul drawn (1)			24 YIGITOGLU S foul flagrant 1 (1 - 6)
03:52				24 YIGITOGLU S turnover offensive (2)
03:52	11 SHREWSBERRY B free throw 1 - 2 made (6)	<b>15-39</b>	<b>-24</b>	
03:52	11 SHREWSBERRY B free throw 2 - 2 made (7)	<b>16-39</b>	<b>-23</b>	
03:22	11 SHREWSBERRY B 3pt FG , jump shot made (10)	<b>19-39</b>	<b>-20</b>	
03:22	7 DAVIS T assist (1)			
03:08	25 KONSTANTYNOVSKYI N foul personal (3 - 7)			24 YIGITOGLU S foul drawn (4)
03:08	2 IMES L substitution out			
03:08	3 BURTON M substitution in			
03:08				3 HARRIS C substitution out
03:08				5 GORENER T substitution in
03:08				24 YIGITOGLU S 1&1 free throw 1 missed



**Officials:** Bert Smith, Tommy Morrissey, Eric Lewis

Game Time	UND	Score	Diff	SMU
03:07	25 KONSTANTYNOVSKIYI N defensive rebound (2)			
02:57	25 KONSTANTYNOVSKIYI N 2pt FG in the paint, hook shot missed			
02:54				33 CROSS M defensive rebound (4)
02:50		<b>19-42</b>	<b>-23</b>	33 CROSS M 3pt FG fast break, jump shot made (3)
02:50				0 EDWARDS B assist (2)
02:29	11 SHREWSBERRY B foul drawn (1)			5 GORENER T foul personal (1 - 7)
02:29	25 KONSTANTYNOVSKIYI N substitution out			
02:29	12 SUNDRA G substitution in			
02:29	11 SHREWSBERRY B 1&1 free throw 1 made (11)	<b>20-42</b>	<b>-22</b>	
02:29	11 SHREWSBERRY B 1&1 free throw 2 made (12)	<b>21-42</b>	<b>-21</b>	
02:15		<b>21-44</b>	<b>-23</b>	33 CROSS M 2pt FG in the paint, jump shot made (5)
02:15				8 OQUENDO K assist (1)
01:55	7 DAVIS T foul drawn (3)			0 EDWARDS B foul shooting (1 - 8)
01:55	7 DAVIS T free throw 1 - 2 made (4)	<b>22-44</b>	<b>-22</b>	
01:55	7 DAVIS T free throw 2 - 2 made (5)	<b>23-44</b>	<b>-21</b>	
01:27	20 KONIECZNY J foul shooting (1 - 8)			24 YIGITGLU S foul drawn (5)
01:27		<b>23-45</b>	<b>-22</b>	24 YIGITGLU S free throw 1 - 2 made (7)
01:27				8 OQUENDO K substitution out
01:27				3 HARRIS C substitution in
01:27		<b>23-46</b>	<b>-23</b>	24 YIGITGLU S free throw 2 - 2 made (8)
01:27				24 YIGITGLU S substitution out
01:27				20 COLBERT J substitution in
01:16	3 BURTON M turnover lost ball (4)			5 GORENER T steal (1)
01:02		<b>23-48</b>	<b>-25</b>	33 CROSS M 2pt FG from turnover in the paint, hook shot made (7)
00:34	12 SUNDRA G turnover bad pass (1)			
00:34	3 BURTON M substitution out			
00:34	11 SHREWSBERRY B substitution out			
00:34	1 ROPER II J substitution in			
00:34	2 IMES L substitution in			
00:34				5 GORENER T substitution out
00:34				20 COLBERT J substitution out
00:34				8 OQUENDO K substitution in
00:34				24 YIGITGLU S substitution in
00:34	12 SUNDRA G substitution out			
00:34	25 KONSTANTYNOVSKIYI N substitution in			
00:23	2 IMES L steal (1)			24 YIGITGLU S turnover bad pass (3)
00:17	2 IMES L 2pt FG fast break from turnover in the paint, driving layup made (2)	<b>25-48</b>	<b>-23</b>	
00:00		<b>25-50</b>	<b>-25</b>	3 HARRIS C 2pt FG in the paint, floating jump shot made (9)
<b>END OF PERIOD</b>				
<b>UND 25-50 SMU</b>				



**SMU at Notre Dame**

02/19/25 Purcell Pavilion at the Joyce Center, Notre Dame  
2024-25 Men's Basketball

Game Time: 7:00 PM  
Game Duration: 2:03  
Attendance: 4,332

Officials: Bert Smith, Tommy Morrissey, Eric Lewis

**SMU - 50**

NO.	Name	F/C	Min	FG			Rebounds			Fouls		TP	AS	TO	ST	Blocks		+/-
				M-A	M-A	M-A	OR	DR	TOT	PF	FD					BS	BA	
33	Matt Cross	F	15:16	3-4	1-2	0-0	1	3	4	1	0	7	2	0	2	0	0	17
24	Samet Yigitoglu	C	15:12	3-5	0-1	2-5	1	1	2	1	5	8	0	3	2	0	0	17
0	B.J. Edwards	G	17:08	2-3	0-0	0-0	0	4	4	1	0	4	2	0	1	0	0	19
3	Chuck Harris	G	16:27	4-8	1-3	0-0	0	3	3	1	0	9	3	1	0	0	0	21
8	Kario Oquendo	G	15:12	6-6	2-2	1-1	0	1	1	1	1	15	1	0	0	0	0	19
5	Tibet Gorener		05:26	0-0	0-0	0-0	0	0	0	1	0	0	0	0	1	0	0	8
10	AJ George		05:47	1-1	0-0	1-1	1	1	2	0	1	3	0	0	0	1	0	8
22	Keon Ambrose-Hylton		04:44	0-0	0-0	0-0	0	0	0	1	0	0	0	0	0	0	0	8
20	Jerrell Colbert		04:48	2-2	0-0	0-0	0	0	0	1	1	4	1	0	0	0	0	8
Team							0	2	2			0		0				
<b>Totals</b>				21-29	4-8	4-7	3	15	18	8	8	50	9	4	6	1	0	25

Shooting By Period		
1st FG%	21-29	72.4%
3PT%	4-8	50.0%
FT%	4-7	57.1%
GM FG%	21-29	72.4%
3PT%	4-8	50.0%
FT%	4-7	57.1%

Dead Ball Rebounds: 1, 0

Technical Fouls::NONE

**Notre Dame - 25**

NO.	Name	F/C	Min	FG			Rebounds			Fouls		TP	AS	TO	ST	Blocks		+/-
				M-A	M-A	M-A	OR	DR	TOT	PF	FD					BS	BA	
7	Tae Davis	F	15:01	1-3	1-1	2-4	1	2	3	0	3	5	1	1	0	0	0	-18
14	Kebba Njie	F	09:37	0-0	0-0	0-0	0	0	0	2	0	0	0	1	0	0	0	-18
3	Markus Burton	G	14:24	1-5	0-3	0-0	0	0	0	0	0	2	2	4	0	0	0	-23
4	Sir Mohammed	G	08:02	1-3	0-2	0-0	0	0	0	0	1	2	0	0	0	0	0	-15
11	Braeden Shrewsbury	G	14:28	3-5	2-3	4-4	0	1	1	0	1	12	0	0	0	0	1	-23
1	Julian Roper II		04:22	0-0	0-0	0-0	0	0	0	0	0	0	0	0	0	0	0	-2
20	J.R. Konieczny		09:20	0-1	0-0	2-3	0	0	0	1	1	2	0	1	0	0	0	-7
25	Nikita Konstantynovskyi		08:28	0-1	0-0	0-0	0	2	2	3	1	0	0	0	0	0	0	-5
41	Matt Allocco		08:58	0-1	0-1	0-0	0	0	0	1	0	0	1	0	0	0	0	-13
12	Garrett Sundra		04:12	0-0	0-0	0-0	0	1	1	0	1	0	0	1	0	0	0	-4
5	Cole Certa		01:25	0-1	0-1	0-0	0	0	0	1	0	0	0	0	0	0	0	-2
2	Logan Imes		01:43	1-2	0-1	0-0	0	0	0	0	0	2	0	0	1	0	0	5
Team							0	1	1			0		0				
<b>Totals</b>				7-22	3-12	8-11	1	7	8	8	8	25	4	8	1	0	1	-25

Shooting By Period		
1st FG%	7-22	31.8%
3PT%	3-12	25.0%
FT%	8-11	72.7%
GM FG%	7-22	31.8%
3PT%	3-12	25.0%
FT%	8-11	72.7%

Dead Ball Rebounds: 2, 0

Technical Fouls::NONE

	SMU	UND
Biggest lead	25 (1st 4:37)	0 (1st 20:00)
Best Scoring Run	10(1st 9:40)	5(1st 3:22)
Lead Changes	0	
Times Tied	0	
Time with Lead	19:27	00:00

	SMU	UND
Points from		
Turnovers	11	4
Paint	30	6
Second Chance	8	0
Fast Breaks	10	5
Bench	7	4

	Period by Period Scoring		
	1st	2nd	TOT
SMU	50	47	97
UND	25	48	73



**Officials:** Bert Smith, Tommy Morrissey, Eric Lewis

**Period 2**

**Quarter Starters:**

<b>UND</b>	4 Mohammed S	7 Davis T	11 Shrewsberry B	20 Konieczny J	41 Allocco M
<b>SMU</b>	0 Edwards B	3 Harris C	8 Oquendo K	24 Yigitoglu S	33 Cross M

Game Time	UND	Score	Diff	SMU
20:00	1 ROPER II J substitution out			
20:00	2 IMES L substitution out			
20:00	25 KONSTANTYNOVSKYI N substitution out			
20:00	4 MOHAMMED S substitution in			
20:00	11 SHREWSBERRY B substitution in			
20:00	41 ALLOCCO M substitution in			
19:47				33 CROSS M 2pt FG in the paint, floating jump shot missed
19:43	20 KONIECZNY J defensive rebound (1)			
19:38	11 SHREWSBERRY B 2pt FG in the paint, driving layup missed			
19:35	4 MOHAMMED S offensive rebound (1)			
19:32	4 MOHAMMED S 2pt FG second chance in the paint, layup blocked			
19:32				33 CROSS M block (1)
19:28				24 YIGITOGU S defensive rebound (3)
19:20				24 YIGITOGU S 2pt FG in the paint, hook shot missed
19:17	11 SHREWSBERRY B defensive rebound (2)			
19:13	11 SHREWSBERRY B 3pt FG , jump shot made (15)	<b>28-50</b>	<b>-22</b>	
19:13	20 KONIECZNY J assist (1)			
18:44		<b>28-53</b>	<b>-25</b>	33 CROSS M 3pt FG , jump shot made (10)
18:44				8 OQUENDO K assist (2)
18:29	20 KONIECZNY J 3pt FG , jump shot made (5)	<b>31-53</b>	<b>-22</b>	
18:29	41 ALLOCCO M assist (2)			
18:14		<b>31-55</b>	<b>-24</b>	24 YIGITOGU S 2pt FG in the paint, floating jump shot made (10)
18:14				0 EDWARDS B assist (3)
18:01	7 DAVIS T 3pt FG , jump shot missed			
17:59				33 CROSS M defensive rebound (5)
17:47	11 SHREWSBERRY B foul personal (1 - 1)			3 HARRIS C foul drawn (1)
17:37	4 MOHAMMED S foul personal (1 - 2)			24 YIGITOGU S foul drawn (6)
17:30		<b>31-57</b>	<b>-26</b>	8 OQUENDO K 2pt FG in the paint, driving layup made (17)
17:22	4 MOHAMMED S 2pt FG outside the paint, floating jump shot made (4)	<b>33-57</b>	<b>-24</b>	
17:22	4 MOHAMMED S foul drawn (2)			33 CROSS M foul shooting (2 - 1)
17:21	4 MOHAMMED S free throw 1 - 1 missed			
17:20				24 YIGITOGU S defensive rebound (4)
17:07		<b>33-59</b>	<b>-26</b>	24 YIGITOGU S 2pt FG in the paint, hook shot made (12)
17:07				0 EDWARDS B assist (4)
16:49	7 DAVIS T 2pt FG in the paint, layup made (7)	<b>35-59</b>	<b>-24</b>	
16:36				8 OQUENDO K 3pt FG , jump shot missed
16:33	4 MOHAMMED S defensive rebound (2)			
16:28	20 KONIECZNY J 3pt FG , jump shot missed			
16:25				0 EDWARDS B defensive rebound (5)
16:14		<b>35-61</b>	<b>-26</b>	33 CROSS M 2pt FG in the paint, turnaround jump shot made (12)





Official Basketball Play by Play - Second Half  
**SMU at Notre Dame**  
 02/19/25 Purcell Pavilion at the Joyce Center, Notre Dame  
 2024-25 Men's Basketball

**Game Time:** 7:00 PM  
**Game Duration:** 2:03  
**Attendance:** 4,332

**Officials:** Bert Smith, Tommy Morrissey, Eric Lewis

Game Time	UND	Score	Diff	SMU
16:10				24 YIGITOGU S substitution out
16:10				21 TRAORE Y substitution in
15:58	7 DAVIS T turnover bad pass (2)			0 EDWARDS B steal (2)
15:54	41 ALLOCCO M foul shooting (2 - 3)			8 OQUENDO K foul drawn (2)
15:54	Timeout media			
15:54		<b>35-62</b>	<b>-27</b>	8 OQUENDO K free throw fast break 1 - 2 made (18)
15:54		<b>35-63</b>	<b>-28</b>	8 OQUENDO K free throw fast break 2 - 2 made (19)
15:38	41 ALLOCCO M 3pt FG , jump shot missed			
15:35	7 DAVIS T offensive rebound (4)			
15:32	7 DAVIS T 2pt FG second chance in the paint, layup made (9)	<b>37-63</b>	<b>-26</b>	
15:08				0 EDWARDS B turnover lost ball (1)
15:08				0 EDWARDS B substitution out
15:08				10 GEORGE A substitution in
14:55	4 MOHAMMED S foul drawn (3)			10 GEORGE A foul shooting (1 - 2)
14:55	4 MOHAMMED S free throw 1 - 2 missed			
14:55	offensive dead ball rebound (3)			
14:55	20 KONIECZNY J substitution out			
14:55	3 BURTON M substitution in			
14:55	4 MOHAMMED S free throw 2 - 2 made (5)	<b>38-63</b>	<b>-25</b>	
14:42	4 MOHAMMED S foul shooting (2 - 4)			8 OQUENDO K foul drawn (3)
14:42		<b>38-64</b>	<b>-26</b>	8 OQUENDO K free throw 1 - 2 made (20)
14:42				8 OQUENDO K free throw 2 - 2 missed
14:40				21 TRAORE Y offensive rebound (1)
14:40		<b>38-66</b>	<b>-28</b>	21 TRAORE Y 2pt FG second chance in the paint, layup made (2)
14:40	7 DAVIS T foul shooting (1 - 5)			21 TRAORE Y foul drawn (1)
14:40	7 DAVIS T substitution out			
14:40	1 ROPER II J substitution in			
14:40		<b>38-67</b>	<b>-29</b>	21 TRAORE Y free throw 1 - 1 made (3)
14:15	11 SHREWSBERRY B 3pt FG , jump shot missed			
14:13	offensive rebound (14)			
14:13	4 MOHAMMED S foul drawn (4)			21 TRAORE Y foul personal (1 - 3)
14:13				33 CROSS M substitution out
14:13				22 AMBROSE-HYLTON K substitution in
14:00	41 ALLOCCO M 3pt FG second chance, jump shot missed			
13:59				defensive rebound (24)
13:41				3 HARRIS C 3pt FG , jump shot missed
13:37				22 AMBROSE-HYLTON K offensive rebound (1)
13:31				8 OQUENDO K 3pt FG second chance, jump shot missed
13:28				22 AMBROSE-HYLTON K offensive rebound (2)
13:27				22 AMBROSE-HYLTON K turnover travel (1)
13:27	41 ALLOCCO M substitution out			
13:27	5 CERTA C substitution in			
13:27				8 OQUENDO K substitution out
13:27				0 EDWARDS B substitution in
13:10	11 SHREWSBERRY B 3pt FG from turnover, jump shot missed			
13:08				3 HARRIS C defensive rebound (4)
12:59		<b>38-69</b>	<b>-31</b>	21 TRAORE Y 2pt FG in the paint, layup made (5)
12:59				3 HARRIS C assist (4)



Official Basketball Play by Play - Second Half  
**SMU at Notre Dame**  
 02/19/25 Purcell Pavilion at the Joyce Center, Notre Dame  
 2024-25 Men's Basketball

**Game Time:** 7:00 PM  
**Game Duration:** 2:03  
**Attendance:** 4,332

**Officials:** Bert Smith, Tommy Morrissey, Eric Lewis

Game Time	UND	Score	Diff	SMU
12:59	4 MOHAMMED S foul shooting (3 - 6)			21 TRAORE Y foul drawn (2)
12:59	4 MOHAMMED S substitution out			
12:59	12 SUNDRA G substitution in			
12:59				3 HARRIS C substitution out
12:59				33 CROSS M substitution in
12:59		<b>38-70</b>	<b>-32</b>	21 TRAORE Y free throw 1 - 1 made (6)
12:51	5 CERTA C 3pt FG , jump shot missed			
12:48				22 AMBROSE-HYLTON K defensive rebound (3)
12:36	1 ROPER II J steal (1)			10 GEORGE A turnover lost ball (1)
12:22	1 ROPER II J foul drawn (1)			21 TRAORE Y foul shooting (2 - 4)
12:22	1 ROPER II J free throw 1 - 2 missed			
12:22	offensive dead ball rebound (4)			
12:22	1 ROPER II J free throw 2 - 2 missed			
12:20				33 CROSS M defensive rebound (6)
12:09				21 TRAORE Y 2pt FG in the paint, layup missed
12:08	5 CERTA C defensive rebound (1)			
11:57	3 BURTON M 2pt FG in the paint, turnaround jump shot missed			
11:54				33 CROSS M defensive rebound (7)
11:44	Timeout media			
11:44	11 SHREWSBERRY B substitution out			
11:44	2 IMES L substitution in			
11:41				33 CROSS M 2pt FG in the paint, hook shot missed
11:40				33 CROSS M offensive rebound (8)
11:40	3 BURTON M foul personal (1 - 7)			33 CROSS M foul drawn (1)
11:40		<b>38-71</b>	<b>-33</b>	33 CROSS M 1&1 free throw 1 made (13)
11:40		<b>38-72</b>	<b>-34</b>	33 CROSS M 1&1 free throw 2 made (14)
11:29	2 IMES L foul drawn (1)			10 GEORGE A foul shooting (2 - 5)
11:29	2 IMES L free throw 1 - 2 made (3)	<b>39-72</b>	<b>-33</b>	
11:29				10 GEORGE A substitution out
11:29				3 HARRIS C substitution in
11:29	2 IMES L free throw 2 - 2 made (4)	<b>40-72</b>	<b>-32</b>	
11:15				0 EDWARDS B turnover lost ball (2)
10:46	1 ROPER II J 3pt FG from turnover, jump shot made (3)	<b>43-72</b>	<b>-29</b>	
10:46	5 CERTA C assist (1)			
10:25				33 CROSS M 3pt FG , jump shot missed
10:22				3 HARRIS C offensive rebound (5)
10:15		<b>43-74</b>	<b>-31</b>	22 AMBROSE-HYLTON K 2pt FG second chance in the paint, driving layup made (2)
10:02	5 CERTA C 3pt FG , jump shot missed			
09:59				33 CROSS M defensive rebound (9)
09:45		<b>43-77</b>	<b>-34</b>	0 EDWARDS B 3pt FG , jump shot made (7)
09:45				3 HARRIS C assist (5)
09:32	12 SUNDRA G 3pt FG , jump shot made (3)	<b>46-77</b>	<b>-31</b>	
09:32	2 IMES L assist (1)			
09:22				22 AMBROSE-HYLTON K 3pt FG , jump shot missed
09:19	2 IMES L defensive rebound (1)			
09:04	1 ROPER II J 3pt FG , jump shot missed			
08:59	12 SUNDRA G offensive rebound (2)			
08:58	2 IMES L foul drawn (2)			3 HARRIS C foul personal (2 - 6)



Official Basketball Play by Play - Second Half  
**SMU at Notre Dame**  
 02/19/25 Purcell Pavilion at the Joyce Center, Notre Dame  
 2024-25 Men's Basketball

**Game Time:** 7:00 PM  
**Game Duration:** 2:03  
**Attendance:** 4,332

**Officials:** Bert Smith, Tommy Morrissey, Eric Lewis

Game Time	UND	Score	Diff	SMU
08:58	1 ROPER II J substitution out			
08:58	2 IMES L substitution out			
08:58	5 CERTA C substitution out			
08:58	12 SUNDRA G substitution out			
08:58	7 DAVIS T substitution in			
08:58	11 SHREWSBERRY B substitution in			
08:58	20 KONIECZNY J substitution in			
08:58	41 ALLOCCO M substitution in			
08:58				21 TRAORE Y substitution out
08:58				22 AMBROSE-HYLTON K substitution out
08:58				33 CROSS M substitution out
08:58				5 GORENER T substitution in
08:58				8 OQUENDO K substitution in
08:58				24 YIGITGLU S substitution in
08:54	20 KONIECZNY J 3pt FG second chance, jump shot missed			
08:51				0 EDWARDS B defensive rebound (6)
08:43	3 BURTON M foul shooting (2 - 8)			3 HARRIS C foul drawn (2)
08:43		<b>46-78</b>	<b>-32</b>	3 HARRIS C free throw 1 - 2 made (10)
08:43		<b>46-79</b>	<b>-33</b>	3 HARRIS C free throw 2 - 2 made (11)
08:32	7 DAVIS T 2pt FG in the paint, floating jump shot made (11)	<b>48-79</b>	<b>-31</b>	
08:32	3 BURTON M assist (3)			
08:09		<b>48-82</b>	<b>-34</b>	8 OQUENDO K 3pt FG , jump shot made (23)
08:09				3 HARRIS C assist (6)
07:54	7 DAVIS T 2pt FG in the paint, driving layup made (13)	<b>50-82</b>	<b>-32</b>	
07:54	7 DAVIS T foul drawn (4)			8 OQUENDO K foul shooting (2 - 7)
07:54				Timeout media
07:54	3 BURTON M substitution out			
07:54	4 MOHAMMED S substitution in			
07:54	7 DAVIS T free throw 1 - 1 missed			
07:53				24 YIGITGLU S defensive rebound (5)
07:44				turnover 10 sec back court (9)
07:33	11 SHREWSBERRY B 3pt FG from turnover, jump shot made (18)	<b>53-82</b>	<b>-29</b>	
07:33	4 MOHAMMED S assist (1)			
07:17				3 HARRIS C 3pt FG , jump shot missed
07:13	20 KONIECZNY J defensive rebound (2)			
06:56	41 ALLOCCO M turnover bad pass (1)			3 HARRIS C steal (1)
06:51	11 SHREWSBERRY B foul shooting (2 - 9)			8 OQUENDO K foul drawn (4)
06:51		<b>53-83</b>	<b>-30</b>	8 OQUENDO K free throw fast break 1 - 2 made (24)
06:51		<b>53-84</b>	<b>-31</b>	8 OQUENDO K free throw fast break 2 - 2 made (25)
06:24	20 KONIECZNY J 2pt FG outside the paint, pull up jump shot made (7)	<b>55-84</b>	<b>-29</b>	
06:03				8 OQUENDO K substitution out
06:03				33 CROSS M substitution in
05:57				0 EDWARDS B 2pt FG in the paint, driving layup missed
05:54				24 YIGITGLU S offensive rebound (6)
05:53				24 YIGITGLU S 2pt FG second chance in the paint, layup missed
05:50	7 DAVIS T defensive rebound (5)			
05:47	7 DAVIS T turnover bad pass (3)			0 EDWARDS B steal (3)



Official Basketball Play by Play - Second Half  
**SMU at Notre Dame**  
 02/19/25 Purcell Pavilion at the Joyce Center, Notre Dame  
 2024-25 Men's Basketball

**Game Time:** 7:00 PM  
**Game Duration:** 2:03  
**Attendance:** 4,332

**Officials:** Bert Smith, Tommy Morrissey, Eric Lewis

Game Time	UND	Score	Diff	SMU
05:44	7 DAVIS T foul shooting (2 - 10)			0 EDWARDS B foul drawn (1)
05:44				0 EDWARDS B free throw fast break 1 - 2 missed
05:44				offensive dead ball rebound (2)
05:44	7 DAVIS T substitution out			
05:44	41 ALLOCCO M substitution out			
05:44	3 BURTON M substitution in			
05:44	12 SUNDRA G substitution in			
05:44		<b>55-85</b>	<b>-30</b>	0 EDWARDS B free throw fast break 2 - 2 made (8)
05:44				0 EDWARDS B substitution out
05:44				10 GEORGE A substitution in
05:35	12 SUNDRA G 3pt FG , jump shot missed			
05:32				3 HARRIS C defensive rebound (6)
05:23		<b>55-87</b>	<b>-32</b>	24 YIGITOGLU S 2pt FG in the paint, hook shot made (14)
05:23				3 HARRIS C assist (7)
05:05	11 SHREWSBERRY B turnover bad pass (1)			33 CROSS M steal (3)
05:00	3 BURTON M steal (1)			33 CROSS M turnover bad pass (1)
04:56	12 SUNDRA G 3pt FG fast break from turnover, jump shot made (6)	<b>58-87</b>	<b>-29</b>	
04:56	20 KONIECZNY J assist (2)			
04:56	12 SUNDRA G foul drawn (2)			24 YIGITOGLU S foul shooting (2 - 8)
04:56				24 YIGITOGLU S substitution out
04:56				33 CROSS M substitution out
04:56				20 COLBERT J substitution in
04:56				21 TRAORE Y substitution in
04:56	12 SUNDRA G free throw fast break 1 - 1 made (7)	<b>59-87</b>	<b>-28</b>	
04:46	3 BURTON M foul shooting (3 - 11)			10 GEORGE A foul drawn (2)
04:46		<b>59-88</b>	<b>-29</b>	10 GEORGE A free throw 1 - 2 made (4)
04:46		<b>59-89</b>	<b>-30</b>	10 GEORGE A free throw 2 - 2 made (5)
04:30	11 SHREWSBERRY B 3pt FG , jump shot made (21)	<b>62-89</b>	<b>-27</b>	
04:30	4 MOHAMMED S assist (2)			
04:23	12 SUNDRA G steal (1)			3 HARRIS C turnover lost ball (2)
04:20	12 SUNDRA G 2pt FG fast break from turnover in the paint, driving layup made (9)	<b>64-89</b>	<b>-25</b>	
04:20	20 KONIECZNY J assist (3)			
04:19				Timeout 30 Sec
04:19	11 SHREWSBERRY B substitution out			
04:19	5 CERTA C substitution in			
04:19				3 HARRIS C substitution out
04:19				22 AMBROSE-HYLTON K substitution in
03:48				22 AMBROSE-HYLTON K 3pt FG , jump shot missed
03:47				10 GEORGE A offensive rebound (3)
03:47	5 CERTA C foul drawn (1)			20 COLBERT J foul offensive (2 - 9)
03:47				20 COLBERT J turnover offensive (1)
03:47	5 CERTA C 1&1 free throw 1 made (1)	<b>65-89</b>	<b>-24</b>	
03:47	5 CERTA C 1&1 free throw 2 made (2)	<b>66-89</b>	<b>-23</b>	
03:47	Timeout media			
03:47	3 BURTON M substitution out			
03:47	2 IMES L substitution in			
03:32	4 MOHAMMED S foul shooting (4 - 12)			5 GORENER T foul drawn (1)
03:32				5 GORENER T free throw 1 - 2 missed



Official Basketball Play by Play - Second Half  
**SMU at Notre Dame**  
 02/19/25 Purcell Pavilion at the Joyce Center, Notre Dame  
 2024-25 Men's Basketball

**Game Time:** 7:00 PM  
**Game Duration:** 2:03  
**Attendance:** 4,332

**Officials:** Bert Smith, Tommy Morrissey, Eric Lewis

Game Time	UND	Score	Diff	SMU
03:32				offensive dead ball rebound (3)
03:32		<b>66-90</b>	<b>-24</b>	5 GORENER T free throw 2 - 2 made (1)
03:16	4 MOHAMMED S 2pt FG in the paint, layup made (7)	<b>68-90</b>	<b>-22</b>	
03:16	2 IMES L assist (2)			
03:16	4 MOHAMMED S foul drawn (5)			20 COLBERT J foul shooting (3 - 10)
03:16	4 MOHAMMED S free throw 1 - 1 made (8)	<b>69-90</b>	<b>-21</b>	
03:05	5 CERTA C foul personal (2 - 13)			10 GEORGE A foul drawn (3)
03:05		<b>69-91</b>	<b>-22</b>	10 GEORGE A free throw 1 - 2 made (6)
03:05		<b>69-92</b>	<b>-23</b>	10 GEORGE A free throw 2 - 2 made (7)
02:52	4 MOHAMMED S 2pt FG in the paint, floating jump shot missed			
02:50				21 TRAORE Y defensive rebound (2)
02:30		<b>69-95</b>	<b>-26</b>	5 GORENER T 3pt FG , jump shot made (4)
02:30				22 AMBROSE-HYLTON K assist (1)
02:10	2 IMES L 3pt FG , jump shot missed			
02:07				22 AMBROSE-HYLTON K defensive rebound (4)
01:59				21 TRAORE Y 3pt FG , jump shot missed
01:56				20 COLBERT J offensive rebound (1)
01:54				20 COLBERT J 2pt FG second chance in the paint, layup blocked
01:54	12 SUNDRA G block (1)			
01:53				offensive rebound (42)
01:36		<b>69-97</b>	<b>-28</b>	21 TRAORE Y 2pt FG second chance outside the paint, turnaround jump shot made (8)
01:19	2 IMES L 2pt FG in the paint, driving layup made (6)	<b>71-97</b>	<b>-26</b>	
00:55				22 AMBROSE-HYLTON K 2pt FG in the paint, driving layup missed
00:53				22 AMBROSE-HYLTON K offensive rebound (5)
00:52	2 IMES L steal (2)			22 AMBROSE-HYLTON K turnover lost ball (2)
00:40	20 KONIECZNY J 2pt FG from turnover in the paint, turnaround jump shot missed			
00:39	offensive rebound (20)			
00:30	12 SUNDRA G foul drawn (3)			21 TRAORE Y foul personal (3 - 11)
00:30	12 SUNDRA G free throw 1 - 2 made (10)	<b>72-97</b>	<b>-25</b>	
00:30	12 SUNDRA G free throw 2 - 2 made (11)	<b>73-97</b>	<b>-24</b>	
<b>END OF GAME</b>				
<b>UND 73-97 SMU</b>				



Officials: Bert Smith, Tommy Morrissey, Eric Lewis

SMU - 47

NO.	Name	F	Min	FG			3P			FT			Rebounds			Fouls		TP	AS	TO	ST	Blocks		+/-
				M-A	M-A	M-A	OR	DR	TOT	PF	FD	OR	DR	TOT	BS	BA								
33	Matt Cross	F	10:55	2-5	1-2	2-2	1	4	5	1	1	7	0	1	1	1	0	1	1	1	0	0	4	
24	Samet Yigitoglu	C	07:52	3-5	0-0	0-0	1	3	4	1	1	6	0	0	0	0	0	0	0	0	0	0	-1	
0	B.J. Edwards	G	12:35	1-2	1-1	1-2	0	2	2	0	1	4	2	2	2	2	0	0	0	0	0	0	2	
3	Chuck Harris	G	14:11	0-2	0-2	2-2	1	2	3	1	2	2	4	1	1	1	0	0	0	0	0	0	-2	
8	Kario Oquendo	G	09:28	2-4	1-3	5-6	0	0	0	1	3	10	1	0	0	0	0	0	0	0	0	0	2	
21	Yohan Traore		12:08	3-5	0-1	2-2	1	1	2	3	2	8	0	0	0	0	0	0	0	0	0	0	0	
10	AJ George		09:23	0-0	0-0	4-4	1	0	1	2	2	4	0	1	0	0	0	0	0	0	0	0	1	
22	Keon Ambrose-Hylton		09:34	1-4	0-2	0-0	3	2	5	0	0	2	1	2	0	0	0	0	0	0	0	0	1	
5	Tibet Gorener		08:58	1-1	1-1	1-2	0	0	0	0	1	4	0	0	0	0	0	0	0	0	0	0	-7	
20	Jerrell Colbert		04:56	0-1	0-0	0-0	1	0	1	2	0	0	0	0	1	0	0	0	0	0	1	0	-5	
Team							1	1	2			0			1									
<b>Totals</b>				13-29	4-12	17-20	10	15	25	11	13	47	8	9	4	1	1	1	-1					

Shooting By Period		
2 <sup>nd</sup> FG%	13-29	44.8%
3PT%	4-12	33.3%
FT%	17-20	85%
GM FG%	13-29	44.8%
3PT%	4-12	33.3%
FT%	17-20	85.0%

Dead Ball Rebounds: 2, 0

Technical Fouls::NONE

Notre Dame - 48

NO.	Name	F	Min	FG			3P			FT			Rebounds			Fouls		TP	AS	TO	ST	Blocks		+/-
				M-A	M-A	M-A	OR	DR	TOT	PF	FD	OR	DR	TOT	BS	BA								
7	Tae Davis	F	08:34	4-5	0-1	0-1	1	1	2	2	1	8	0	2	0	0	0	0	0	0	0	0	-1	
14	Kebba Njie	F	00:00	0-0	0-0	0-0	0	0	0	0	0	0	0	0	0	0	0	0	0	0	0	0	0	
3	Markus Burton	G	08:58	0-1	0-0	0-0	0	0	0	3	0	0	1	0	1	0	0	0	0	0	0	0	0	
4	Sir Mohammed	G	14:55	2-4	0-0	2-4	1	1	2	4	4	6	2	0	0	0	0	1	2	0	1	2	2	
11	Braeden Shrewsbury	G	12:55	3-6	3-5	0-0	0	1	1	2	0	9	0	1	0	0	0	0	0	0	0	0	-1	
25	Nikita Konstantynovskyi		00:00	0-0	0-0	0-0	0	0	0	0	0	0	0	0	0	0	0	0	0	0	0	0	0	
41	Matt Allocco		09:47	0-2	0-2	0-0	0	0	0	1	0	0	1	0	0	1	1	0	0	0	0	0	-2	
1	Julian Roper II		05:42	1-2	1-2	0-2	0	0	0	0	1	3	0	0	1	0	0	1	0	0	0	0	-3	
5	Cole Certa		08:48	0-2	0-2	2-2	0	1	1	1	1	2	1	0	0	0	0	0	0	0	0	0	-1	
12	Garrett Sundra		09:45	3-4	2-3	3-3	1	0	1	0	2	11	0	0	1	1	0	0	1	1	0	5		
2	Logan Imes		06:33	1-2	0-1	2-2	0	1	1	0	2	4	2	0	1	0	0	0	0	0	0	0	0	
20	J.R. Konieczny		14:03	2-5	1-3	0-0	0	2	2	0	0	5	3	0	0	0	0	0	0	0	0	0	6	
Team							2	0	2			0			0									
<b>Totals</b>				16-33	7-19	9-14	5	7	12	13	11	48	10	4	4	1	1	1	1					

Shooting By Period		
2 <sup>nd</sup> FG%	16-33	48.5%
3PT%	7-19	36.8%
FT%	9-14	64.3%
GM FG%	16-33	48.5%
3PT%	7-19	36.8%
FT%	9-14	64.3%

Dead Ball Rebounds: 2, 0

Technical Fouls::NONE

	SMU	UND
Biggest lead	34 (2 <sup>nd</sup> 11:40)	0 (1 <sup>st</sup> 20:00)
Best Scoring Run	9(2 <sup>nd</sup> 11:40)	7(2 <sup>nd</sup> 3:47)
Lead Changes	0	
Times Tied	0	
Time with Lead	19:47	00:00

Points from	SMU	UND
Turnovers	5	17
Paint	16	14
Second Chance	9	4
Fast Breaks	5	6
Bench	18	25

	Period by Period Scoring		
	1st	2nd	TOT
SMU	50	47	97
UND	25	48	73



**SMU at Notre Dame**

02/19/25 Purcell Pavilion at the Joyce Center, Notre Dame  
2024-25 Men's Basketball

**Game Time:** 7:00 PM  
**Game Duration:** 2:03  
**Attendance:** 4,332

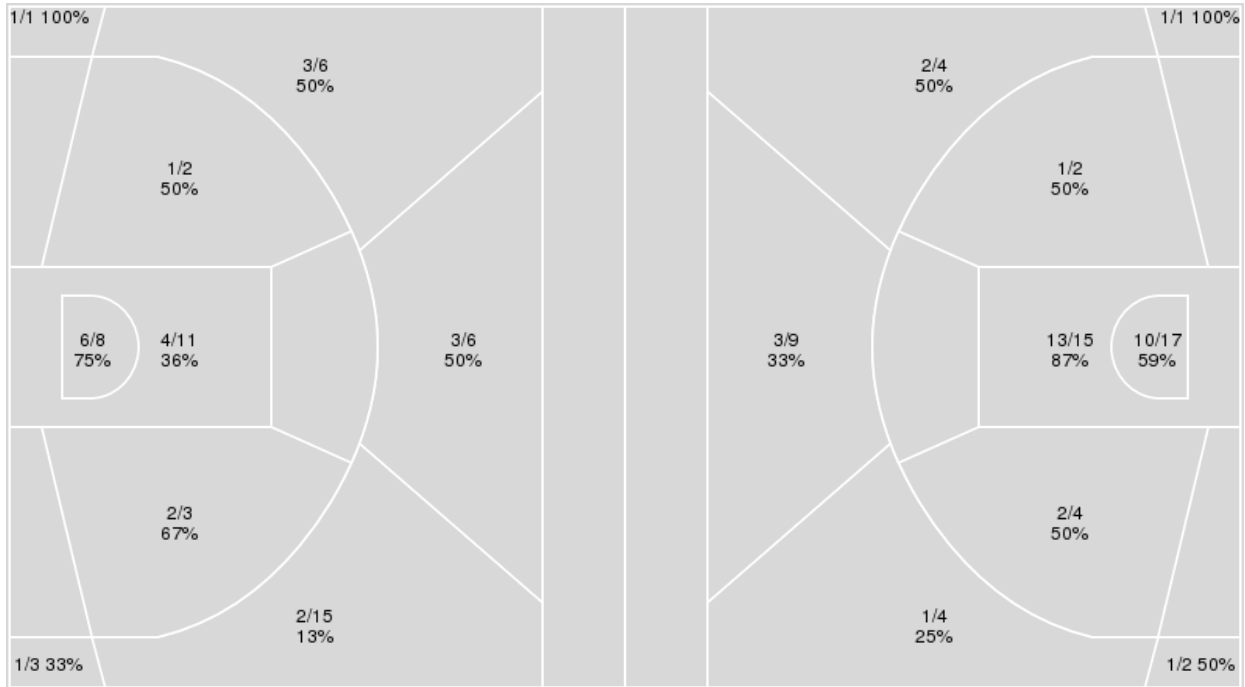
**Officials:** Bert Smith, Tommy Morrissey, Eric Lewis

{ Players => All; } FG Types => All; Results => All;

{ Players => 0, 1, 2, 3, 5, 8, 10, 13, 20, 21, 22, 23, 24, 31, 33, 35; } FG  
Types => All; Results => All;

**Notre Dame**

**SMU**



Notre Dame	M/A	%
Field Goals	23/55	42
2 Points	13/24	54
3 Points	10/31	32
Free Throws	17/25	68

SMU	M/A	%
Field Goals	34/58	59
2 Points	26/38	68
3 Points	8/20	40
Free Throws	21/27	78



**SMU at Notre Dame**

02/19/25 Purcell Pavilion at the Joyce Center, Notre Dame  
2024-25 Men's Basketball

**Game Time:** 7:00 PM  
**Game Duration:** 2:03  
**Attendance:** 4,332

**Officials:** Bert Smith, Tommy Morrissey, Eric Lewis

**SMU**

No	Name	Mins		Score		Points Diff		Points per Min		Assists		Rebounds		Steals		Turnovers	
		On	Off	On	Off	On	Off	On	Off	On	Off	On	Off	On	Off	On	Off
0	B.J. Edwards	29:43	10:17	68 - 47	29 - 26	21	3	2.29	2.82	12	5	30	13	9	1	8	5
3	Chuck Harris	30:38	09:22	78 - 59	19 - 14	19	5	2.55	2.03	14	3	30	13	9	1	10	3
5	Tibet Gorener	14:24	25:36	33 - 32	64 - 41	1	23	2.29	2.50	5	12	14	29	6	4	5	8
8	Kario Oquendo	24:40	15:20	67 - 46	30 - 27	21	3	2.72	1.96	13	4	24	19	5	5	7	6
10	AJ George	15:10	24:50	36 - 27	61 - 46	9	15	2.37	2.46	6	11	21	22	2	8	6	7
20	Jerrell Colbert	09:44	30:16	25 - 22	72 - 51	3	21	2.57	2.38	4	13	9	34	1	9	3	10
21	Yohan Traore	12:08	27:52	26 - 26	71 - 47	0	24	2.14	2.55	3	14	17	26	1	9	7	6
22	Keon Ambrose-Hylton	14:18	25:42	33 - 24	64 - 49	9	15	2.31	2.49	6	11	20	23	1	9	5	8
24	Samet Yigitoglu	23:04	16:56	56 - 40	41 - 33	16	8	2.43	2.42	11	6	23	20	8	2	6	7
33	Matt Cross	26:11	13:49	63 - 42	34 - 31	21	3	2.41	2.46	11	6	27	16	8	2	8	5

**Notre Dame**

No	Name	Mins		Score		Points Diff		Points per Min		Assists		Rebounds		Steals		Turnovers	
		On	Off	On	Off	On	Off	On	Off	On	Off	On	Off	On	Off	On	Off
1	Julian Roper II	10:04	29:56	12 - 17	61 - 80	-5	-19	1.19	2.04	2	12	7	13	2	3	1	11
2	Logan Imes	08:16	31:44	22 - 17	51 - 80	5	-29	2.66	1.61	4	10	3	17	2	3	0	12
3	Markus Burton	23:22	16:38	40 - 63	33 - 34	-23	-1	1.71	1.98	9	5	11	9	3	2	8	4
4	Sir Mohammed	22:57	17:03	46 - 59	27 - 38	-13	-11	2.00	1.58	10	4	11	9	3	2	7	5
5	Cole Certa	10:13	29:47	17 - 20	56 - 77	-3	-21	1.66	1.88	3	11	6	14	2	3	1	11
7	Tae Davis	23:35	16:25	38 - 57	35 - 40	-19	-5	1.61	2.13	6	8	14	6	1	4	10	2
11	Braeden Shrewsbury	27:23	12:37	50 - 74	23 - 23	-24	0	1.83	1.82	11	3	14	6	3	2	11	1
12	Garrett Sundra	13:57	26:03	32 - 31	41 - 66	1	-25	2.30	1.57	6	8	5	15	4	1	4	8
14	Kebba Njie	09:37	30:23	10 - 28	63 - 69	-18	-6	1.04	2.07	3	11	4	16	0	5	5	7
20	J.R. Konieczny	23:23	16:37	54 - 55	19 - 42	-1	-23	2.31	1.14	9	5	10	10	4	1	7	5
25	Nikita Konstantynovskyi	08:28	31:32	11 - 16	62 - 81	-5	-19	1.30	1.97	1	13	4	16	1	4	1	11
41	Matt Allocco	18:45	21:15	33 - 48	40 - 49	-15	-9	1.76	1.88	6	8	11	9	0	5	5	7



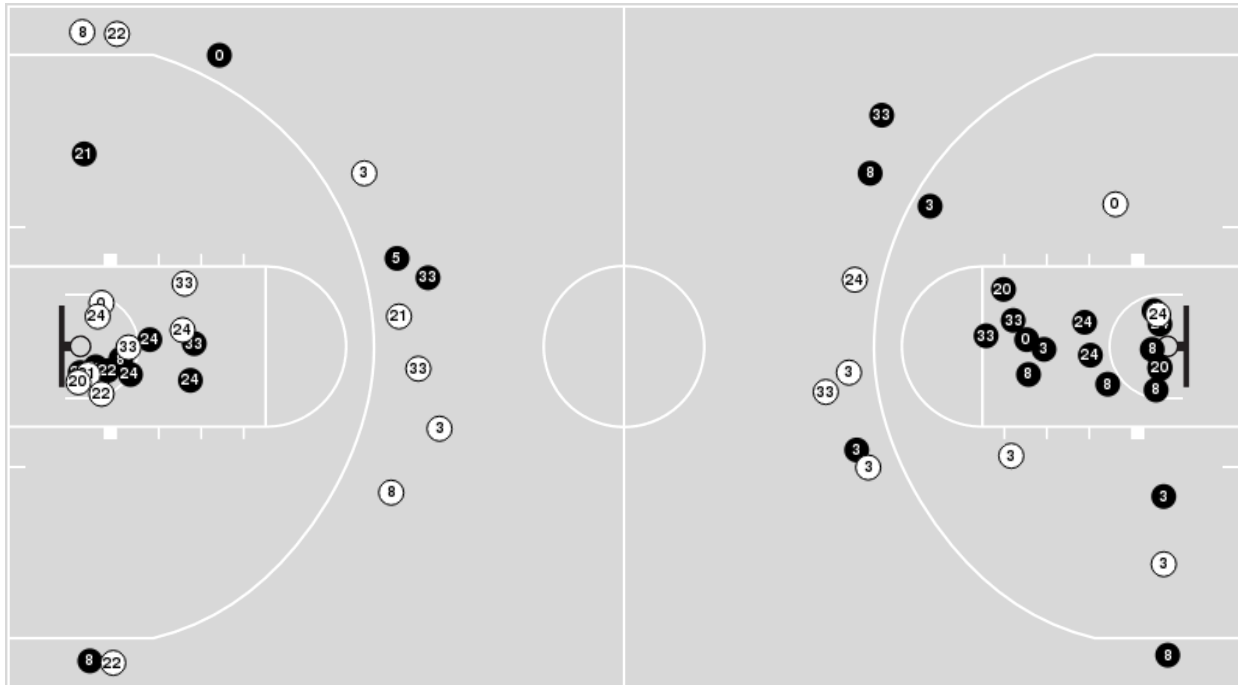


**Officials:** Bert Smith, Tommy Morrissey, Eric Lewis

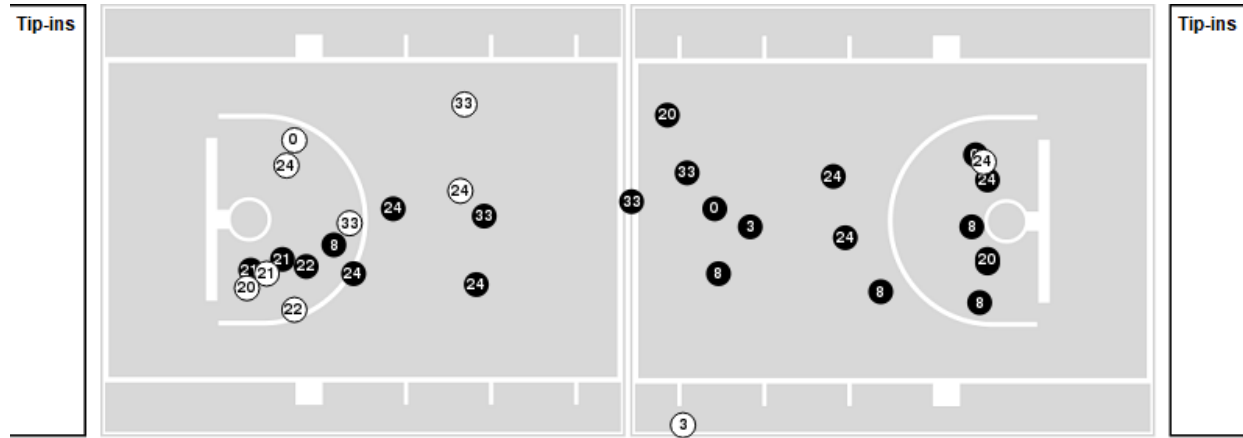
Players => 0, 1, 2, 3, 5, 8, 10, 13, 20, 21, 22, 23, 24, 31, 33, 35FG Types=>AllResults=>All

**SMU**

**All Field Goals**



**Blow Up Chart**



● Made ○ Missed N - Player Number

SMU	M/A	%
Field Goals	34/58	59
2 Points	26/38	68
3 Points	8/20	40
Free Throws	21/27	78

SMU	M/A	%
Points in the Paint	46 (23 / 32)	72
Fast Break Points	15 (10/11)	91
Second Chance Points	17 (10/13)	77
Effective FG%	66	

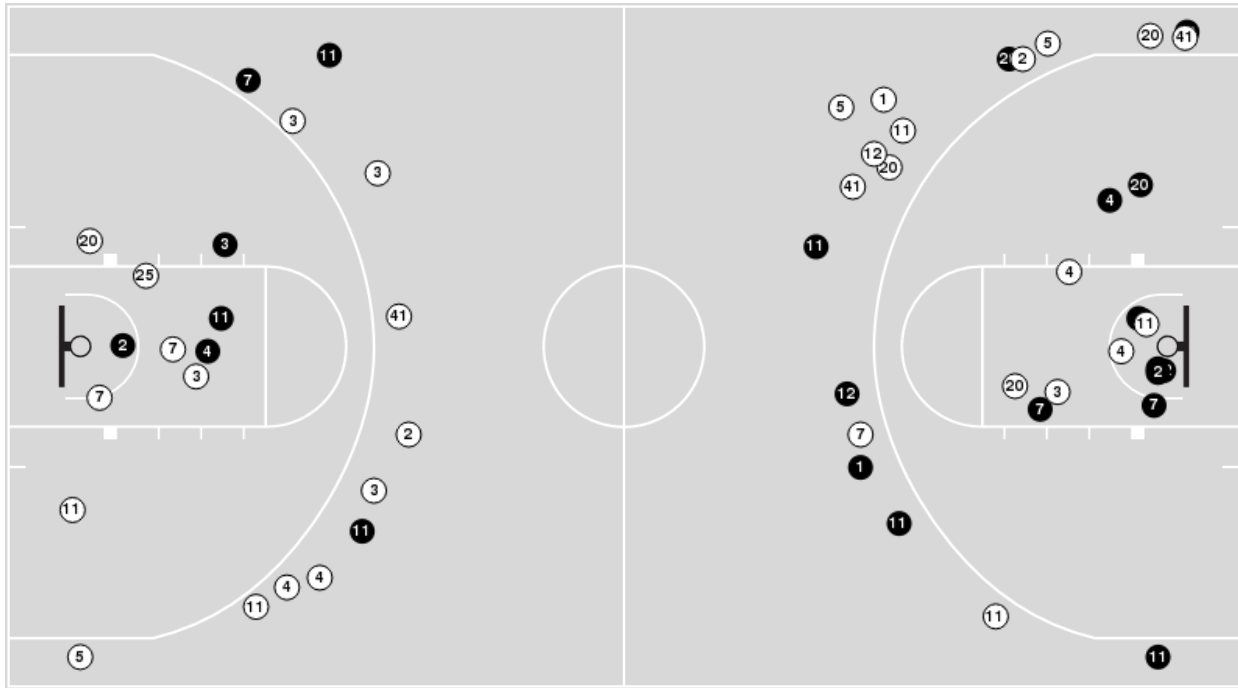


**Officials:** Bert Smith, Tommy Morrissey, Eric Lewis

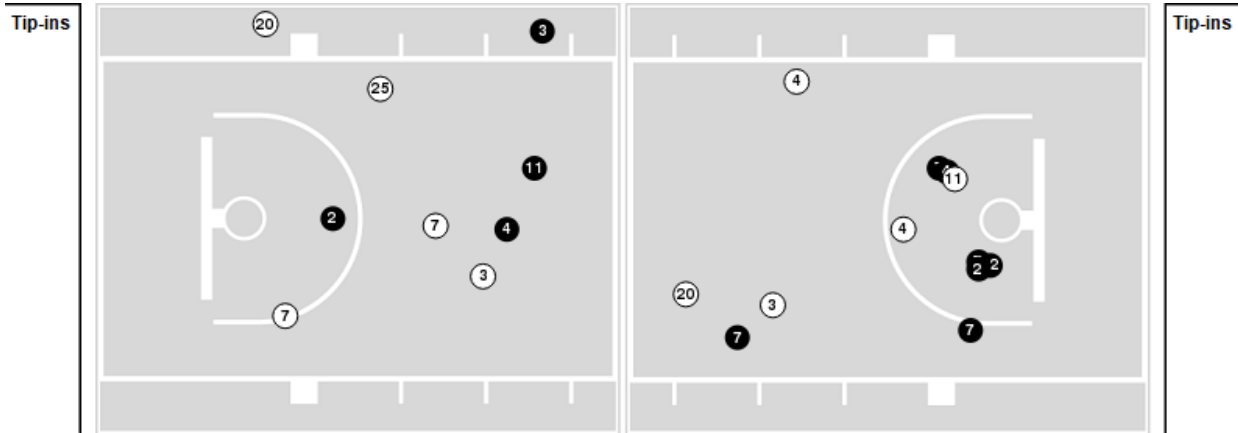
Players => AllFG Types=>AllResults=>All

**Notre Dame**

**All Field Goals**



**Blow Up Chart**



● Made    ○ Missed    N - Player Number

Notre Dame	M/A	%
Field Goals	23/55	42
2 Points	13/24	54
3 Points	10/31	32
Free Throws	17/25	68

Notre Dame	M/A	%
Points in the Paint	20 (10 / 19)	53
Fast Break Points	11 (5/5)	100
Second Chance Points	4 (3/7)	43
Effective FG%	51	



Official Basketball Rotations Summary - Final  
**SMU at Notre Dame**  
 02/19/25 Purcell Pavilion at the Joyce Center, Notre Dame  
 2024-25 Men's Basketball

**Game Time:** 7:00 PM  
**Game Duration:** 2:03  
**Attendance:** 4,332

**Officials:** Bert Smith, Tommy Morrissey, Eric Lewis

**SMU**

Lineup	Quarter On	Time On	Quarter Off	Time Off	Time on Court	Score	Score Diff	Reb	Stl	Tov	Ass	PPP
0- Edwards B/ 3- Harris C/ 8- Oquendo K/ 24- Yigitoglu S/ 33- Cross M/	1	20:00	1	13:22	06:38	15-4	11	7	3	2	2	1.3636
0- Edwards B/ 3- Harris C/ 5- Gorener T/ 24- Yigitoglu S/ 33- Cross M/	1	13:22	1	12:22	01:00	2-1	1	1	1	0	0	1.0000
0- Edwards B/ 5- Gorener T/ 10- George A/ 22- Ambrose-Hylton K/ 24- Yigitoglu S/	1	12:22	1	10:30	01:52	2-0	2	2	1	0	0	1.0638
3- Harris C/ 8- Oquendo K/ 10- George A/ 20- Colbert J/ 22- Ambrose-Hylton K/	1	10:30	1	07:38	02:52	13-7	6	2	0	0	3	2.2109
0- Edwards B/ 3- Harris C/ 10- George A/ 20- Colbert J/ 33- Cross M/	1	07:38	1	06:35	01:03	0-0	0	1	0	0	0	0.0000
0- Edwards B/ 3- Harris C/ 8- Oquendo K/ 24- Yigitoglu S/ 33- Cross M/	1	06:35	1	03:08	03:27	7-7	0	4	0	1	2	1.7500
0- Edwards B/ 5- Gorener T/ 8- Oquendo K/ 24- Yigitoglu S/ 33- Cross M/	1	03:08	1	01:27	01:41	6-4	2	1	0	0	2	2.0833
0- Edwards B/ 3- Harris C/ 5- Gorener T/ 24- Yigitoglu S/ 33- Cross M/	1	01:27	1	01:27	00:00	1-0	1	0	0	0	0	2.2727
0- Edwards B/ 3- Harris C/ 5- Gorener T/ 20- Colbert J/ 33- Cross M/	1	01:27	1	00:34	00:52	2-0	2	0	1	0	0	2.0000
0- Edwards B/ 3- Harris C/ 8- Oquendo K/ 24- Yigitoglu S/ 33- Cross M/	1	00:34	2	16:10	04:24	13-12	1	4	0	1	3	1.3000
0- Edwards B/ 3- Harris C/ 8- Oquendo K/ 21- Traore Y/ 33- Cross M/	2	16:10	2	15:08	01:02	2-2	0	0	1	1	0	1.0638
3- Harris C/ 8- Oquendo K/ 10- George A/ 21- Traore Y/ 33- Cross M/	2	15:08	2	14:13	00:55	4-1	3	1	0	0	0	3.0303
3- Harris C/ 8- Oquendo K/ 10- George A/ 21- Traore Y/ 22- Ambrose-Hylton K/	2	14:13	2	13:27	00:46	0-0	0	3	0	1	0	0.0000
0- Edwards B/ 3- Harris C/ 10- George A/ 21- Traore Y/ 22- Ambrose-Hylton K/	2	13:27	2	12:59	00:28	2-0	2	1	0	0	1	2.0000
0- Edwards B/ 10- George A/ 21- Traore Y/ 22- Ambrose-Hylton K/ 33- Cross M/	2	12:59	2	11:29	01:30	3-1	2	4	0	1	0	0.9036
0- Edwards B/ 3- Harris C/ 21- Traore Y/ 22- Ambrose-Hylton K/ 33- Cross M/	2	11:29	2	08:58	02:31	5-7	-2	2	0	1	1	1.2500
0- Edwards B/ 3- Harris C/ 5- Gorener T/ 8- Oquendo K/ 24- Yigitoglu S/	2	08:58	2	06:03	02:55	7-9	-2	2	1	1	1	1.4706
0- Edwards B/ 3- Harris C/ 5- Gorener T/ 24- Yigitoglu S/ 33- Cross M/	2	06:03	2	05:44	00:19	1-0	1	1	1	0	0	0.5319
3- Harris C/ 5- Gorener T/ 10- George A/ 24- Yigitoglu S/ 33- Cross M/	2	05:44	2	04:56	00:48	2-3	-1	1	1	1	1	1.0000
3- Harris C/ 5- Gorener T/ 10- George A/ 20- Colbert J/ 21- Traore Y/	2	04:56	2	04:19	00:37	2-6	-4	0	0	1	0	1.0638
5- Gorener T/ 10- George A/ 20- Colbert J/ 21- Traore Y/ 22- Ambrose-Hylton K/	2	04:19	2	00:00	04:19	8-9	-1	6	0	2	1	1.3889



**Officials:** Bert Smith, Tommy Morrissey, Eric Lewis

**Notre Dame**

Lineup	Quarter On	Time On	Quarter Off	Time Off	Time on Court	Score	Score Diff	Reb	Stl	Tov	Ass	PPP
3- Burton M/ 4- Mohammed S/ 7- Davis T/ 11- Shrewsberry B/ 14- Njie K/	1	20:00	1	14:40	05:20	3-13	-10	2	0	3	1	0.3333
1- Roper II J/ 7- Davis T/ 20- Konieczny J/ 25- Konstantynovskiy N/ 41- Allocco M/	1	14:40	1	14:12	00:28	0-0	0	0	0	0	0	0.0000
1- Roper II J/ 12- Sundra G/ 20- Konieczny J/ 25- Konstantynovskiy N/ 41- Allocco M/	1	14:12	1	11:55	02:17	2-4	-2	1	0	1	0	0.6024
3- Burton M/ 5- Certa C/ 7- Davis T/ 11- Shrewsberry B/ 14- Njie K/	1	11:55	1	10:30	01:25	0-2	-2	2	0	1	0	0.0000
3- Burton M/ 7- Davis T/ 11- Shrewsberry B/ 14- Njie K/ 41- Allocco M/	1	10:30	1	10:20	00:10	0-1	-1	0	0	1	0	0.0000
3- Burton M/ 4- Mohammed S/ 11- Shrewsberry B/ 14- Njie K/ 41- Allocco M/	1	10:20	1	07:38	02:42	7-12	-5	0	0	0	2	1.4000
1- Roper II J/ 3- Burton M/ 7- Davis T/ 25- Konstantynovskiy N/ 41- Allocco M/	1	07:38	1	06:35	01:03	0-0	0	2	0	0	0	0.0000
3- Burton M/ 7- Davis T/ 20- Konieczny J/ 25- Konstantynovskiy N/ 41- Allocco M/	1	06:35	1	05:25	01:10	2-2	0	0	0	0	0	1.0000
7- Davis T/ 11- Shrewsberry B/ 20- Konieczny J/ 25- Konstantynovskiy N/ 41- Allocco M/	1	05:25	1	04:17	01:08	0-5	-5	0	0	0	0	0.0000
2- Imes L/ 7- Davis T/ 11- Shrewsberry B/ 20- Konieczny J/ 25- Konstantynovskiy N/	1	04:17	1	03:08	01:09	5-0	5	0	0	0	1	1.7361
3- Burton M/ 7- Davis T/ 11- Shrewsberry B/ 20- Konieczny J/ 25- Konstantynovskiy N/	1	03:08	1	02:29	00:39	0-3	-3	1	0	0	0	0.0000
3- Burton M/ 7- Davis T/ 11- Shrewsberry B/ 12- Sundra G/ 20- Konieczny J/	1	02:29	1	00:34	01:54	4-6	-2	0	0	2	0	1.0638
1- Roper II J/ 2- Imes L/ 7- Davis T/ 12- Sundra G/ 20- Konieczny J/	1	00:34	1	00:34	00:00	0-0	0	0	0	0	0	0.0000
1- Roper II J/ 2- Imes L/ 7- Davis T/ 20- Konieczny J/ 25- Konstantynovskiy N/	1	00:34	2	20:00	00:34	2-2	0	0	1	0	0	2.0000
4- Mohammed S/ 7- Davis T/ 11- Shrewsberry B/ 20- Konieczny J/ 41- Allocco M/	2	20:00	2	14:55	05:05	12-13	-1	5	0	1	2	1.2146
3- Burton M/ 4- Mohammed S/ 7- Davis T/ 11- Shrewsberry B/ 41- Allocco M/	2	14:55	2	14:40	00:15	1-3	-2	0	0	0	0	2.2727
1- Roper II J/ 3- Burton M/ 4- Mohammed S/ 11- Shrewsberry B/ 41- Allocco M/	2	14:40	2	13:27	01:13	0-1	-1	1	0	0	0	0.0000
1- Roper II J/ 3- Burton M/ 4- Mohammed S/ 5- Certa C/ 11- Shrewsberry B/	2	13:27	2	12:59	00:28	0-2	-2	0	0	0	0	0.0000
1- Roper II J/ 3- Burton M/ 5- Certa C/ 11- Shrewsberry B/ 12- Sundra G/	2	12:59	2	11:44	01:15	0-1	-1	1	1	0	0	0.0000
1- Roper II J/ 2- Imes L/ 3- Burton M/ 5- Certa C/ 12- Sundra G/	2	11:44	2	08:58	02:46	8-7	1	2	0	0	2	2.0619
3- Burton M/ 7- Davis T/ 11- Shrewsberry B/ 20- Konieczny J/ 41- Allocco M/	2	08:58	2	07:54	01:04	4-5	-1	0	0	0	1	1.3333
4- Mohammed S/ 7- Davis T/ 11- Shrewsberry B/ 20- Konieczny J/ 41- Allocco M/	2	07:54	2	05:44	02:10	5-2	3	2	0	2	1	1.1261
3- Burton M/ 4- Mohammed S/ 11- Shrewsberry B/ 12- Sundra G/ 20- Konieczny J/	2	05:44	2	04:19	01:25	9-5	4	0	2	1	3	1.6544
3- Burton M/ 4- Mohammed S/ 5- Certa C/ 12- Sundra G/ 20- Konieczny J/	2	04:19	2	03:47	00:32	2-0	2	0	0	0	0	2.2727
2- Imes L/ 4- Mohammed S/ 5- Certa C/ 12- Sundra G/ 20- Konieczny J/	2	03:47	2	00:00	03:47	7-8	-1	1	1	0	1	1.3158



**SMU at Notre Dame**

02/19/25 Purcell Pavilion at the Joyce Center, Notre Dame  
2024-25 Men's Basketball

**Game Time:** 7:00 PM  
**Game Duration:** 2:03  
**Attendance:** 4,332

**Officials:** Bert Smith, Tommy Morrissey, Eric Lewis

**SMU**

Lineup	Time	Score	Score Diff	Pts/Min	Reb	Stl	Tov	Ass	PPP
0- Edwards B/3- Harris C/8- Oquendo K/24- Yigitoglu S/33- Cross M/	14:29	35-23	12	2.4155	15	3	4	7	1.4000
5- Gorener T/10- George A/20- Colbert J/21- Traore Y/22- Ambrose-Hylton K/	04:19	8-9	-1	1.8533	6	0	2	1	1.3889
0- Edwards B/3- Harris C/5- Gorener T/8- Oquendo K/24- Yigitoglu S/	02:55	7-9	-2	2.4000	2	1	1	1	1.4706
3- Harris C/8- Oquendo K/10- George A/20- Colbert J/22- Ambrose-Hylton K/	02:52	13-7	6	4.5349	2	0	0	3	2.2109
0- Edwards B/3- Harris C/21- Traore Y/22- Ambrose-Hylton K/33- Cross M/	02:31	5-7	-2	1.9868	2	0	1	1	1.2500
0- Edwards B/5- Gorener T/10- George A/22- Ambrose-Hylton K/24- Yigitoglu S/	01:52	2-0	2	1.0714	2	1	0	0	1.0638
0- Edwards B/5- Gorener T/8- Oquendo K/24- Yigitoglu S/33- Cross M/	01:41	6-4	2	3.5644	1	0	0	2	2.0833
0- Edwards B/10- George A/21- Traore Y/22- Ambrose-Hylton K/33- Cross M/	01:30	3-1	2	2.0000	4	0	1	0	0.9036
0- Edwards B/3- Harris C/5- Gorener T/24- Yigitoglu S/33- Cross M/	01:19	4-1	3	3.0380	2	2	0	0	0.9259
0- Edwards B/3- Harris C/10- George A/20- Colbert J/33- Cross M/	01:03	0-0	0	0.0000	1	0	0	0	0.0000
0- Edwards B/3- Harris C/8- Oquendo K/21- Traore Y/33- Cross M/	01:02	2-2	0	1.9355	0	1	1	0	1.0638
3- Harris C/8- Oquendo K/10- George A/21- Traore Y/33- Cross M/	00:55	4-1	3	4.3636	1	0	0	0	3.0303
0- Edwards B/3- Harris C/5- Gorener T/20- Colbert J/33- Cross M/	00:52	2-0	2	2.2814	0	1	0	0	2.0000
3- Harris C/5- Gorener T/10- George A/24- Yigitoglu S/33- Cross M/	00:48	2-3	-1	2.5000	1	1	1	1	1.0000
3- Harris C/8- Oquendo K/10- George A/21- Traore Y/22- Ambrose-Hylton K/	00:46	0-0	0	0.0000	3	0	1	0	0.0000
3- Harris C/5- Gorener T/10- George A/20- Colbert J/21- Traore Y/	00:37	2-6	-4	3.2432	0	0	1	0	1.0638
0- Edwards B/3- Harris C/10- George A/21- Traore Y/22- Ambrose-Hylton K/	00:28	2-0	2	4.2857	1	0	0	1	2.0000



**Officials:** Bert Smith, Tommy Morrissey, Eric Lewis

**Notre Dame**

Lineup	Time	Score	Score Diff	Pts/Min	Reb	Stl	Tov	Ass	PPP
4- Mohammed S/ 7- Davis T/ 11- Shrewsberry B/ 20- Konieczny J/ 41- Allocco M/	07:15	17-15	2	2.3448	7	0	3	3	1.1872
3- Burton M/ 4- Mohammed S/ 7- Davis T/ 11- Shrewsberry B/ 14- Njie K/	05:20	3-13	-10	0.5625	2	0	3	1	0.3333
2- Imes L/ 4- Mohammed S/ 5- Certa C/ 12- Sundra G/ 20- Konieczny J/	03:47	7-8	-1	1.8502	1	1	0	1	1.3158
1- Roper II J/ 2- Imes L/ 3- Burton M/ 5- Certa C/ 12- Sundra G/	02:46	8-7	1	2.8916	2	0	0	2	2.0619
3- Burton M/ 4- Mohammed S/ 11- Shrewsberry B/ 14- Njie K/ 41- Allocco M/	02:42	7-12	-5	2.5926	0	0	0	2	1.4000
1- Roper II J/ 12- Sundra G/ 20- Konieczny J/ 25- Konstantynovskiy N/ 41- Allocco M/	02:17	2-4	-2	0.8759	1	0	1	0	0.6024
3- Burton M/ 7- Davis T/ 11- Shrewsberry B/ 12- Sundra G/ 20- Konieczny J/	01:54	4-6	-2	2.0942	0	0	2	0	1.0638
3- Burton M/ 5- Certa C/ 7- Davis T/ 11- Shrewsberry B/ 14- Njie K/	01:25	0-2	-2	0.0000	2	0	1	0	0.0000
3- Burton M/ 4- Mohammed S/ 11- Shrewsberry B/ 12- Sundra G/ 20- Konieczny J/	01:25	9-5	4	6.3529	0	2	1	3	1.6544
1- Roper II J/ 3- Burton M/ 5- Certa C/ 11- Shrewsberry B/ 12- Sundra G/	01:15	0-1	-1	0.0000	1	1	0	0	0.0000
1- Roper II J/ 3- Burton M/ 4- Mohammed S/ 11- Shrewsberry B/ 41- Allocco M/	01:13	0-1	-1	0.0000	1	0	0	0	0.0000
3- Burton M/ 7- Davis T/ 20- Konieczny J/ 25- Konstantynovskiy N/ 41- Allocco M/	01:10	2-2	0	1.7143	0	0	0	0	1.0000
2- Imes L/ 7- Davis T/ 11- Shrewsberry B/ 20- Konieczny J/ 25- Konstantynovskiy N/	01:09	5-0	5	4.3478	0	0	0	1	1.7361
7- Davis T/ 11- Shrewsberry B/ 20- Konieczny J/ 25- Konstantynovskiy N/ 41- Allocco M/	01:08	0-5	-5	0.0000	0	0	0	0	0.0000
3- Burton M/ 7- Davis T/ 11- Shrewsberry B/ 20- Konieczny J/ 41- Allocco M/	01:04	4-5	-1	3.7500	0	0	0	1	1.3333
1- Roper II J/ 3- Burton M/ 7- Davis T/ 25- Konstantynovskiy N/ 41- Allocco M/	01:03	0-0	0	0.0000	2	0	0	0	0.0000
3- Burton M/ 7- Davis T/ 11- Shrewsberry B/ 20- Konieczny J/ 25- Konstantynovskiy N/	00:39	0-3	-3	0.0000	1	0	0	0	0.0000
1- Roper II J/ 2- Imes L/ 7- Davis T/ 20- Konieczny J/ 25- Konstantynovskiy N/	00:34	2-2	0	3.4884	0	1	0	0	2.0000
3- Burton M/ 4- Mohammed S/ 5- Certa C/ 12- Sundra G/ 20- Konieczny J/	00:32	2-0	2	3.7500	0	0	0	0	2.2727
1- Roper II J/ 7- Davis T/ 20- Konieczny J/ 25- Konstantynovskiy N/ 41- Allocco M/	00:28	0-0	0	0.0000	0	0	0	0	0.0000
1- Roper II J/ 3- Burton M/ 4- Mohammed S/ 5- Certa C/ 11- Shrewsberry B/	00:28	0-2	-2	0.0000	0	0	0	0	0.0000
3- Burton M/ 4- Mohammed S/ 7- Davis T/ 11- Shrewsberry B/ 41- Allocco M/	00:15	1-3	-2	4.0000	0	0	0	0	2.2727
3- Burton M/ 7- Davis T/ 11- Shrewsberry B/ 14- Njie K/ 41- Allocco M/	00:10	0-1	-1	0.0000	0	0	1	0	0.0000
1- Roper II J/ 2- Imes L/ 7- Davis T/ 12- Sundra G/ 20- Konieczny J/	00:00	0-0	0	NaN	0	0	0	0	0.0000