



Officials: Denise Brooks, Jeffrey Smith, Kevin Sparrock

Notre Dame - 88

Record: 22-2 (13-0)

NO.	Name	Min	FG			Rebounds			Fouls		TP	AS	TO	ST	Blocks		+/-
			M-A	M-A	M-A	OR	DR	TOT	PF	FD					BS	BA	
20	Liatu King	F 28:56	5-11	0-0	1-2	2	4	6	1	3	11	4	4	1	0	0	23
21	Maddy Westbeld	F 14:24	1-4	1-1	0-0	0	0	0	4	0	3	1	0	1	1	0	7
3	Hannah Hidalgo	G 31:16	3-17	1-6	4-4	1	0	1	3	3	11	5	3	7	0	2	17
5	Olivia Miles	G 34:37	10-16	8-13	0-0	1	6	7	0	1	28	5	2	1	0	0	33
11	Sonia Citron	G 32:33	8-9	4-5	2-4	1	9	10	1	3	22	2	0	2	1	0	30
32	Liza Karlen	24:24	2-3	0-0	2-2	0	3	3	4	1	6	1	3	1	1	0	24
8	Cassandre Prosper	20:47	2-3	0-0	0-0	1	2	3	4	0	4	0	0	0	0	0	13
13	Kate Koval	10:14	1-2	0-0	1-2	1	6	7	2	1	3	1	4	1	1	0	5
25	Sarah Cernugel	02:49	0-0	0-0	0-0	0	0	0	0	0	0	0	0	0	0	0	3
Team						2	0	2			0		0				
<b>Totals</b>			32-65	14-25	10-14	9	30	39	19	12	88	19	16	14	4	2	31

Technical Fouls::NONE

Shooting By Period		
1st FG%	8-16	50.0%
3PT%	3-6	50.0%
FT%	3-4	75%
2nd FG%	10-16	62.5%
3PT%	6-8	75.0%
FT%	1-2	50%
3rd FG%	7-18	38.9%
3PT%	3-6	50.0%
FT%	3-4	75%
4th FG%	7-15	46.7%
3PT%	2-5	40.0%
FT%	3-4	75%
GM FG%	32-65	49.2%
3PT%	14-25	56.0%
FT%	10-14	71.4%

Dead Ball Rebounds: 3, 0

Pittsburgh - 57

Record: 11-15 (3-10)

NO.	Name	Min	FG			Rebounds			Fouls		TP	AS	TO	ST	Blocks		+/-
			M-A	M-A	M-A	OR	DR	TOT	PF	FD					BS	BA	
3	MaKayla Elmore	F 34:04	0-3	0-3	1-2	0	6	6	2	1	1	3	2	1	0	0	-22
15	Khadija Faye	C 35:43	10-21	0-0	3-4	5	11	16	4	7	23	0	4	4	2	2	-23
0	Brooklynn Miles	G 27:50	0-4	0-0	0-0	1	1	2	1	0	0	3	4	1	0	1	-29
11	Marley Washenitz	G 35:21	4-11	2-4	3-3	0	1	1	4	3	13	2	2	3	0	1	-38
23	Mikayla Johnson	G 38:56	4-16	0-4	7-7	1	3	4	1	5	15	1	3	1	0	0	-27
1	Aaryn Battle	13:14	1-3	0-0	0-0	0	0	0	0	2	2	3	2	0	0	0	-6
22	Audrey Biggs	08:45	0-0	0-0	0-0	0	0	0	0	0	0	0	0	1	0	0	-14
14	Raeven Boswell	06:07	1-1	0-0	1-1	0	2	2	0	1	3	0	1	0	0	0	4
Team						1	1	2			0		3				
<b>Totals</b>			20-59	2-11	15-17	8	25	33	12	19	57	12	21	11	2	4	-31

Technical Fouls::NONE

Shooting By Period		
1st FG%	7-11	63.6%
3PT%	0-1	0.0%
FT%	7-7	100%
2nd FG%	4-13	30.8%
3PT%	1-2	50.0%
FT%	3-4	75%
3rd FG%	6-16	37.5%
3PT%	0-2	0.0%
FT%	5-6	83.3%
4th FG%	3-19	15.8%
3PT%	1-6	16.7%
FT%	0-0	0%
GM FG%	20-59	33.9%
3PT%	2-11	18.2%
FT%	15-17	88.2%

Dead Ball Rebounds: 3, 0

	ND	UP
Biggest lead	31 (4 <sup>th</sup> 0:12)	3 (1 <sup>st</sup> 6:39)
Best Scoring Run	12(3 <sup>rd</sup> 4:39)	9(3 <sup>rd</sup> 2:10)
Lead Changes	3	
Times Tied	1	
Time with Lead	36:43	02:22

	ND	UP
Points from		
Turnovers	14	12
Paint	36	26
Second Chance	8	2
Fast Breaks	26	8
Bench	13	5

	Period by Period Scoring				
	1st	2nd	3rd	4th	TOT
ND	22	27	20	19	88
UP	21	12	17	7	57



**Notre Dame at Pittsburgh**

02/13/25 Petersen Events Center, Pittsburgh  
2024-25 Women's Basketball

Officials: Denise Brooks, Jeffrey Smith, Kevin Sparrock

**Period 1**

**Quarter Starters:**

<b>UP</b>	0 Miles B	3 Elmore M	11 Washenitz M	15 Faye K	23 Johnson M
<b>ND</b>	3 Hidalgo H	5 Miles O	11 Citron S	20 King L	21 Westbeld M

Game Time	UP	Score	Diff	ND
10:00	15 FAYE K jumpball won			21 WESTBELD M jumpball lost
09:42	15 FAYE K 2pt FG in the paint, layup made (2)	<b>2-0</b>	<b>2</b>	
09:42	0 MILES B assist (1)			
09:27	3 ELMORE M steal (1)			20 KING L turnover lost ball (1)
09:19	3 ELMORE M 3pt FG from turnover, jump shot missed			
09:15				11 CITRON S defensive rebound (1)
09:07		<b>2-3</b>	<b>-1</b>	5 MILES O 3pt FG fast break, jump shot made (3)
09:07				11 CITRON S assist (1)
08:49	15 FAYE K foul drawn (1)			21 WESTBELD M foul personal (1 - 1)
08:40	11 WASHENITZ M 2pt FG in the paint, driving layup missed			
08:38	15 FAYE K offensive rebound (1)			
08:37	15 FAYE K turnover travel (1)			
08:24				3 HIDALGO H 2pt FG from turnover outside the paint, pull up jump shot blocked
08:24	15 FAYE K block (1)			
08:20	0 MILES B defensive rebound (1)			
08:07	23 JOHNSON M 2pt FG outside the paint, pull up jump shot made (2)	<b>4-3</b>	<b>1</b>	
07:47				21 WESTBELD M 2pt FG outside the paint, jump shot missed
07:45	3 ELMORE M defensive rebound (1)			
07:41	3 ELMORE M turnover travel (1)			
07:11				3 HIDALGO H 3pt FG from turnover, jump shot missed
07:08	15 FAYE K defensive rebound (2)			
06:53	11 WASHENITZ M 2pt FG in the paint, layup missed			
06:50				11 CITRON S defensive rebound (2)
06:43				3 HIDALGO H 3pt FG , pull up jump shot missed
06:40	11 WASHENITZ M defensive rebound (1)			
06:39	23 JOHNSON M 2pt FG fast break in the paint, layup made (4)	<b>6-3</b>	<b>3</b>	
06:39	11 WASHENITZ M assist (1)			
06:20		<b>6-6</b>	<b>0</b>	11 CITRON S 3pt FG , jump shot made (3)
06:20				5 MILES O assist (1)
05:54	15 FAYE K 2pt FG outside the paint, turnaround jump shot missed			
05:51				11 CITRON S defensive rebound (3)
05:43		<b>6-8</b>	<b>-2</b>	11 CITRON S 2pt FG in the paint, driving layup made (5)
05:38	0 MILES B turnover lost ball (1)			3 HIDALGO H steal (1)
05:36	3 ELMORE M foul shooting (1 - 1)			3 HIDALGO H foul drawn (1)
05:36				21 WESTBELD M substitution out
05:36				32 KARLEN L substitution in
05:36		<b>6-9</b>	<b>-3</b>	3 HIDALGO H free throw fast break 1 - 2 made (1)
05:36		<b>6-10</b>	<b>-4</b>	3 HIDALGO H free throw fast break 2 - 2 made (2)
05:26	15 FAYE K 2pt FG in the paint, layup made (4)	<b>8-10</b>	<b>-2</b>	
05:26	0 MILES B assist (2)			
05:17		<b>8-13</b>	<b>-5</b>	5 MILES O 3pt FG , step back jump shot made (6)



**Notre Dame at Pittsburgh**

02/13/25 Petersen Events Center, Pittsburgh  
2024-25 Women's Basketball

**Game Time:** 8:00 PM  
**Game Duration:** 1:51  
**Attendance:** 1,774

**Officials:** Denise Brooks, Jeffrey Smith, Kevin Sparrock

Game Time	UP	Score	Diff	ND
05:10	23 JOHNSON M turnover travel (1)			
05:10				11 CITRON S substitution out
05:10				8 PROSPER C substitution in
04:58		<b>8-15</b>	<b>-7</b>	8 PROSPER C 2pt FG from turnover in the paint, layup made (2)
04:58				5 MILES O assist (2)
04:46	15 FAYE K 2pt FG in the paint, layup made (6)	<b>10-15</b>	<b>-5</b>	
04:46	11 WASHENITZ M assist (2)			
04:31	11 WASHENITZ M foul personal (1 - 2)			3 HIDALGO H foul drawn (2)
04:30	Timeout media			
04:30				20 KING L substitution out
04:30				13 KOVAL K substitution in
04:18	11 WASHENITZ M steal (1)			13 KOVAL K turnover bad pass (1)
04:12	jump ball situation			
04:12	11 WASHENITZ M turnover lost ball (1)			3 HIDALGO H steal (2)
03:54				3 HIDALGO H 3pt FG from turnover, jump shot missed
03:52	3 ELMORE M defensive rebound (2)			
03:41	23 JOHNSON M foul drawn (1)			8 PROSPER C foul shooting (1 - 2)
03:41				8 PROSPER C substitution out
03:41				11 CITRON S substitution in
03:41	23 JOHNSON M free throw 1 - 2 made (5)	<b>11-15</b>	<b>-4</b>	
03:41	23 JOHNSON M free throw 2 - 2 made (6)	<b>12-15</b>	<b>-3</b>	
03:14		<b>12-17</b>	<b>-5</b>	11 CITRON S 2pt FG in the paint, driving layup made (7)
03:07	15 FAYE K foul drawn (2)			13 KOVAL K foul personal (1 - 3)
02:42	turnover shot clock (6)			
02:42				13 KOVAL K substitution out
02:42				32 KARLEN L substitution out
02:42				20 KING L substitution in
02:42				21 WESTBELD M substitution in
02:29				20 KING L 2pt FG from turnover in the paint, layup missed
02:27				20 KING L offensive rebound (1)
02:26		<b>12-19</b>	<b>-7</b>	20 KING L 2pt FG from turnover second chance in the paint, layup made (2)
02:16	15 FAYE K foul drawn (3)			21 WESTBELD M foul shooting (2 - 4)
02:16				21 WESTBELD M substitution out
02:16				32 KARLEN L substitution in
02:16	15 FAYE K free throw 1 - 2 made (7)	<b>13-19</b>	<b>-6</b>	
02:16	15 FAYE K free throw 2 - 2 made (8)	<b>14-19</b>	<b>-5</b>	
02:12	jump ball situation			
02:12	15 FAYE K steal (1)			5 MILES O turnover lost ball (1)
01:53	11 WASHENITZ M foul drawn (1)			20 KING L foul shooting (1 - 5)
01:53	11 WASHENITZ M free throw 1 - 3 made (1)	<b>15-19</b>	<b>-4</b>	
01:53	11 WASHENITZ M free throw 2 - 3 made (2)	<b>16-19</b>	<b>-3</b>	
01:53	11 WASHENITZ M free throw 3 - 3 made (3)	<b>17-19</b>	<b>-2</b>	
01:33	15 FAYE K foul shooting (1 - 3)			20 KING L foul drawn (1)
01:33				5 MILES O substitution out
01:33				8 PROSPER C substitution in
01:33		<b>17-20</b>	<b>-3</b>	20 KING L free throw 1 - 2 made (3)
01:33				20 KING L free throw 2 - 2 missed
01:32	15 FAYE K defensive rebound (3)			



### Notre Dame at Pittsburgh

02/13/25 Petersen Events Center, Pittsburgh  
2024-25 Women's Basketball

Officials: Denise Brooks, Jeffrey Smith, Kevin Sparrock

Game Time	UP	Score	Diff	ND
01:19	3 ELMORE M turnover bad pass (2)			32 KARLEN L steal (1)
01:08				3 HIDALGO H 2pt FG from turnover in the paint, driving layup blocked
01:08	15 FAYE K block (2)			
01:08				offensive rebound (5)
01:07				3 HIDALGO H 2pt FG from turnover second chance outside the paint, step back jump shot missed
01:07	15 FAYE K defensive rebound (4)			
01:07	11 WASHENITZ M 2pt FG in the paint, driving layup made (5)	19-20	-1	
01:07		19-22	-3	20 KING L 2pt FG fast break in the paint, layup made (5)
01:07				3 HIDALGO H assist (1)
00:02	11 WASHENITZ M 2pt FG outside the paint, floating jump shot made (7)	21-22	-1	
00:02	0 MILES B assist (3)			
<b>END OF PERIOD</b>				
<b>UP 21-22 ND</b>				



**Notre Dame at Pittsburgh**

02/13/25 Petersen Events Center, Pittsburgh  
2024-25 Women's Basketball

Game Time: 8:00 PM  
Game Duration: 1:51  
Attendance: 1,774

Officials: Denise Brooks, Jeffrey Smith, Kevin Sparrock

**Notre Dame - 22**

NO.	Name	F	Min	FG			Rebounds			Fouls		TP	AS	TO	ST	Blocks		+/-
				M-A	3P	FT	OR	DR	TOT	PF	FD					BS	BA	
20	Liatu King	F	08:12	2-3	0-0	1-2	1	0	1	1	1	5	0	1	0	0	0	1
21	Maddy Westbeld	F	04:50	0-1	0-0	0-0	0	0	0	2	0	0	0	0	0	0	0	4
3	Hannah Hidalgo	G	10:00	0-6	0-3	2-2	0	0	0	0	2	2	1	0	2	0	2	1
5	Olivia Miles	G	08:27	2-2	2-2	0-0	0	0	0	0	0	6	2	1	0	0	0	2
11	Sonia Citron	G	08:31	3-3	1-1	0-0	0	3	3	0	0	7	1	0	0	0	0	1
32	Liza Karlen		05:10	0-0	0-0	0-0	0	0	0	0	0	0	0	0	1	0	0	-3
8	Cassandre Prosper		03:02	1-1	0-0	0-0	0	0	0	1	0	2	0	0	0	0	0	-1
13	Kate Koval		01:48	0-0	0-0	0-0	0	0	0	1	0	0	0	1	0	0	0	0
Team							1	0	1			0		0				
<b>Totals</b>				8-16	3-6	3-4	2	3	5	5	3	22	4	3	3	0	2	1

Shooting By Period		
1st FG%	8-16	50.0%
3PT%	3-6	50.0%
FT%	3-4	75%
GM FG%	8-16	50.0%
3PT%	3-6	50.0%
FT%	3-4	75.0%

Dead Ball Rebounds: 0, 0

Technical Fouls::NONE

**Pittsburgh - 21**

NO.	Name	F	Min	FG			Rebounds			Fouls		TP	AS	TO	ST	Blocks		+/-
				M-A	3P	FT	OR	DR	TOT	PF	FD					BS	BA	
3	MaKayla Elmore	F	10:00	0-1	0-1	0-0	0	2	2	1	0	0	0	2	1	0	0	-1
15	Khadija Faye	C	10:00	3-4	0-0	2-2	1	3	4	1	3	8	0	1	1	2	0	-1
0	Brooklynn Miles	G	10:00	0-0	0-0	0-0	0	1	1	0	0	0	3	1	0	0	0	-1
11	Marley Washenitz	G	10:00	2-4	0-0	3-3	0	1	1	1	1	7	2	1	1	0	0	-1
23	Mikayla Johnson	G	10:00	2-2	0-0	2-2	0	0	0	0	1	6	0	1	0	0	0	-1
Team							0	0	0			0		1				
<b>Totals</b>				7-11	0-1	7-7	1	7	8	3	5	21	5	7	3	2	0	-1

Shooting By Period		
1st FG%	7-11	63.6%
3PT%	0-1	0.0%
FT%	7-7	100%
GM FG%	7-11	63.6%
3PT%	0-1	0.0%
FT%	7-7	100.0%

Dead Ball Rebounds: 0, 0

Technical Fouls::NONE

	ND	UP
Biggest lead	7 (1 <sup>st</sup> 4:58)	3 (1 <sup>st</sup> 6:39)
Best Scoring Run	7(1 <sup>st</sup> 5:36)	5(1 <sup>st</sup> 1:53)
Lead Changes	3	
Times Tied	1	
Time with Lead	06:43	02:22

Points from	ND	UP
Turnovers	6	3
Paint	10	10
Second Chance	2	0
Fast Breaks	7	2
Bench	2	0

	Period by Period Scoring				
	1st	2nd	3rd	4th	TOT
ND	22	27	20	19	88
UP	21	12	17	7	57



**Notre Dame at Pittsburgh**

02/13/25 Petersen Events Center, Pittsburgh  
2024-25 Women's Basketball

Officials: Denise Brooks, Jeffrey Smith, Kevin Sparrock

**Period 2**

**Quarter Starters:**

<b>UP</b>	0 Miles B	1 Battle A	3 Elmore M	11 Washenitz M	22 Biggs A
<b>ND</b>	5 Miles O	8 Prosper C	11 Citron S	20 King L	32 Karlen L

Game Time	UP	Score	Diff	ND
10:00	15 FAYE K substitution out			
10:00	23 JOHNSON M substitution out			
10:00	1 BATTLE A substitution in			
10:00	22 BIGGS A substitution in			
10:00				3 HIDALGO H substitution out
10:00				5 MILES O substitution in
09:48		<b>21-25</b>	<b>-4</b>	11 CITRON S 3pt FG , jump shot made (10)
09:48				20 KING L assist (1)
09:40	1 BATTLE A turnover bad pass (1)			11 CITRON S steal (1)
09:33		<b>21-28</b>	<b>-7</b>	5 MILES O 3pt FG fast break from turnover, pull up jump shot made (9)
09:06	1 BATTLE A 2pt FG outside the paint, pull up jump shot made (2)	<b>23-28</b>	<b>-5</b>	
08:56				32 KARLEN L turnover travel (1)
08:56	1 BATTLE A substitution out			
08:56	22 BIGGS A substitution out			
08:56	15 FAYE K substitution in			
08:56	23 JOHNSON M substitution in			
08:41	15 FAYE K foul drawn (4)			32 KARLEN L foul personal (1 - 1)
08:31	11 WASHENITZ M 2pt FG from turnover outside the paint, pull up jump shot missed			
08:28				11 CITRON S defensive rebound (4)
08:18		<b>23-30</b>	<b>-7</b>	20 KING L 2pt FG in the paint, layup made (7)
08:18				11 CITRON S assist (2)
08:05	0 MILES B 2pt FG in the paint, layup missed			
08:02				8 PROSPER C defensive rebound (1)
07:52				20 KING L 2pt FG outside the paint, jump shot missed
07:49	3 ELMORE M defensive rebound (3)			
07:37	23 JOHNSON M 2pt FG outside the paint, pull up jump shot missed			
07:33				32 KARLEN L defensive rebound (1)
07:20				32 KARLEN L 2pt FG outside the paint, turnaround jump shot missed
07:17	3 ELMORE M defensive rebound (4)			
07:07	15 FAYE K 2pt FG outside the paint, jump shot missed			
07:05				8 PROSPER C defensive rebound (2)
06:51		<b>23-33</b>	<b>-10</b>	5 MILES O 3pt FG , step back jump shot made (12)
06:50	Timeout 30 Sec			
06:50	Timeout media			
06:50	0 MILES B substitution out			
06:50	3 ELMORE M substitution out			
06:50	1 BATTLE A substitution in			
06:50	22 BIGGS A substitution in			
06:50				8 PROSPER C substitution out
06:50				32 KARLEN L substitution out



**Notre Dame at Pittsburgh**

02/13/25 Petersen Events Center, Pittsburgh  
2024-25 Women's Basketball

Officials: Denise Brooks, Jeffrey Smith, Kevin Sparrock

Game Time	UP	Score	Diff	ND
06:50				3 HIDALGO H substitution in
06:50				13 KOVAL K substitution in
06:39	1 BATTLE A turnover bad pass (2)			13 KOVAL K steal (1)
06:32	11 WASHENITZ M steal (2)			3 HIDALGO H turnover lost ball (1)
06:26	jump ball situation			
06:16	1 BATTLE A foul drawn (1)			3 HIDALGO H foul personal (1 - 2)
06:05	15 FAYE K 2pt FG from turnover in the paint, turnaround jump shot blocked			
06:05				13 KOVAL K block (1)
06:01				13 KOVAL K defensive rebound (1)
05:56	15 FAYE K steal (2)			13 KOVAL K turnover lost ball (2)
05:47	15 FAYE K 2pt FG from turnover in the paint, turnaround jump shot missed			
05:47				13 KOVAL K defensive rebound (2)
05:38	23 JOHNSON M foul drawn (2)			13 KOVAL K foul offensive (2 - 3)
05:38				13 KOVAL K turnover offensive (3)
05:38	22 BIGGS A substitution out			
05:38	3 ELMORE M substitution in			
05:38				13 KOVAL K substitution out
05:38				32 KARLEN L substitution in
05:22	11 WASHENITZ M 3pt FG from turnover, jump shot made (10)	<b>26-33</b>	<b>-7</b>	
05:22	3 ELMORE M assist (1)			
05:01		<b>26-35</b>	<b>-9</b>	11 CITRON S 2pt FG in the paint, layup made (12)
05:01				20 KING L assist (2)
04:43	23 JOHNSON M foul drawn (3)			11 CITRON S foul shooting (1 - 4)
04:43	23 JOHNSON M free throw 1 - 2 made (7)	<b>27-35</b>	<b>-8</b>	
04:43	23 JOHNSON M free throw 2 - 2 made (8)	<b>28-35</b>	<b>-7</b>	
04:30		<b>28-38</b>	<b>-10</b>	11 CITRON S 3pt FG , jump shot made (15)
04:30				5 MILES O assist (3)
04:04	1 BATTLE A substitution out			
04:04	0 MILES B substitution in			
03:55	0 MILES B turnover lost ball (2)			5 MILES O steal (1)
03:35				3 HIDALGO H 2pt FG from turnover outside the paint, pull up jump shot missed
03:34	defensive rebound (11)			
03:20	15 FAYE K 2pt FG outside the paint, jump shot made (10)	<b>30-38</b>	<b>-8</b>	
03:20	3 ELMORE M assist (2)			
03:09	11 WASHENITZ M foul personal (2 - 1)			5 MILES O foul drawn (1)
03:01		<b>30-40</b>	<b>-10</b>	20 KING L 2pt FG in the paint, driving layup made (9)
02:50	23 JOHNSON M 2pt FG outside the paint, pull up jump shot missed			
02:47				20 KING L defensive rebound (2)
02:44		<b>30-43</b>	<b>-13</b>	5 MILES O 3pt FG fast break, pull up jump shot made (15)
02:43	Timeout 30 Sec			
02:19	15 FAYE K 2pt FG outside the paint, pull up jump shot missed			
02:17				20 KING L defensive rebound (3)
02:05				3 HIDALGO H 3pt FG , jump shot missed
02:03				11 CITRON S offensive rebound (5)
02:02	0 MILES B foul shooting (1 - 2)			11 CITRON S foul drawn (1)
02:02				20 KING L substitution out



**Notre Dame at Pittsburgh**

02/13/25 Petersen Events Center, Pittsburgh  
2024-25 Women's Basketball

Officials: Denise Brooks, Jeffrey Smith, Kevin Sparrock

Game Time	UP	Score	Diff	ND
02:02				8 PROSPER C substitution in
02:02		<b>30-44</b>	<b>-14</b>	11 CITRON S free throw 1 - 2 made (16)
02:01				11 CITRON S free throw 2 - 2 missed
02:00	15 FAYE K defensive rebound (5)			
01:50	15 FAYE K 2pt FG in the paint, layup made (12)	<b>32-44</b>	<b>-12</b>	
01:50	23 JOHNSON M assist (1)			
01:42		<b>32-46</b>	<b>-14</b>	3 HIDALGO H 2pt FG fast break in the paint, driving layup made (4)
01:20	23 JOHNSON M 3pt FG , jump shot missed			
01:18				5 MILES O defensive rebound (1)
01:12		<b>32-49</b>	<b>-17</b>	11 CITRON S 3pt FG fast break, jump shot made (19)
01:12				5 MILES O assist (4)
00:58	turnover 10 sec back court (11)			
00:58	0 MILES B substitution out			
00:58	1 BATTLE A substitution in			
00:44				3 HIDALGO H 2pt FG from turnover in the paint, driving layup missed
00:41	15 FAYE K defensive rebound (6)			
00:24	3 ELMORE M foul drawn (1)			32 KARLEN L foul shooting (2 - 5)
00:24	3 ELMORE M free throw 1 - 2 missed			
00:24	offensive dead ball rebound (1)			
00:24	3 ELMORE M free throw 2 - 2 made (1)	<b>33-49</b>	<b>-16</b>	
00:24				32 KARLEN L substitution out
00:24				21 WESTBELD M substitution in
00:00				5 MILES O 3pt FG , jump shot missed
00:00				offensive dead ball rebound (1)
<b>END OF PERIOD</b>				
<b>UP 33-49 ND</b>				





**Notre Dame at Pittsburgh**

02/13/25 Petersen Events Center, Pittsburgh  
2024-25 Women's Basketball

Game Time: 8:00 PM  
Game Duration: 1:51  
Attendance: 1,774

Officials: Denise Brooks, Jeffrey Smith, Kevin Sparrock

**Notre Dame - 27**

NO.	Name	F	Min	FG	3P	FT	Rebounds			Fouls		TP	AS	TO	ST	Blocks		+/-
				M-A	M-A	M-A	OR	DR	TOT	PF	FD					BS	BA	
20	Liattu King	F	07:58	2-3	0-0	0-0	0	2	2	0	0	4	2	0	0	0	0	12
21	Maddy Westbeld	F	00:24	0-0	0-0	0-0	0	0	0	0	0	0	0	0	0	0	0	0
3	Hannah Hidalgo	G	06:50	1-4	0-1	0-0	0	0	0	1	0	2	0	1	0	0	0	6
5	Olivia Miles	G	10:00	3-4	3-4	0-0	0	1	1	0	1	9	2	0	1	0	0	15
11	Sonia Citron	G	10:00	4-4	3-3	1-2	1	1	2	1	1	12	1	0	1	0	0	15
13	Kate Koval		01:12	0-0	0-0	0-0	0	2	2	1	0	0	0	2	1	1	0	0
32	Liza Karlen		08:24	0-1	0-0	0-0	0	1	1	2	0	0	0	1	0	0	0	15
8	Cassandre Prosper		05:12	0-0	0-0	0-0	0	2	2	0	0	0	0	0	0	0	0	12
Team							0	0	0			0		0				
<b>Totals</b>				10-16	6-8	1-2	1	9	10	5	2	27	5	4	3	1	0	15

Shooting By Period		
2 <sup>nd</sup> FG%	10-16	62.5%
3PT%	6-8	75.0%
FT%	1-2	50%
GM FG%	10-16	62.5%
3PT%	6-8	75.0%
FT%	1-2	50.0%

Dead Ball Rebounds: 1, 0

Technical Fouls::NONE

**Pittsburgh - 12**

NO.	Name	F	Min	FG	3P	FT	Rebounds			Fouls		TP	AS	TO	ST	Blocks		+/-
				M-A	M-A	M-A	OR	DR	TOT	PF	FD					BS	BA	
3	MaKayla Elmore	F	08:48	0-0	0-0	1-2	0	2	2	0	1	1	2	0	0	0	0	-15
15	Khadija Faye	C	08:56	2-6	0-0	0-0	0	2	2	0	1	4	0	0	1	0	1	-11
0	Brooklynn Miles	G	06:16	0-1	0-0	0-0	0	0	0	1	0	0	0	1	0	0	0	-16
11	Marley Washenitz	G	10:00	1-2	1-1	0-0	0	0	0	1	0	3	0	0	1	0	0	-15
23	Mikayla Johnson	G	08:56	0-3	0-1	2-2	0	0	0	0	2	2	1	0	0	0	0	-11
1	Aaryn Battle		04:48	1-1	0-0	0-0	0	0	0	0	1	2	0	2	0	0	0	-3
22	Audrey Biggs		02:16	0-0	0-0	0-0	0	0	0	0	0	0	0	0	0	0	0	-4
Team							0	1	1			0		1				
<b>Totals</b>				4-13	1-2	3-4	0	5	5	2	5	12	3	4	2	0	1	-15

Shooting By Period		
2 <sup>nd</sup> FG%	4-13	30.8%
3PT%	1-2	50.0%
FT%	3-4	75%
GM FG%	4-13	30.8%
3PT%	1-2	50.0%
FT%	3-4	75.0%

Dead Ball Rebounds: 1, 0

Technical Fouls::NONE

	ND	UP
Biggest lead	17 (2 <sup>nd</sup> 1:12)	0 (1 <sup>st</sup> 10:00)
Best Scoring Run	6(2 <sup>nd</sup> 9:33)	3(2 <sup>nd</sup> 5:22)
Lead Changes	0	
Times Tied	0	
Time with Lead	09:48	00:00

Points from	ND	UP
Turnovers	3	3
Paint	8	2
Second Chance	1	0
Fast Breaks	11	0
Bench	0	2

	Period by Period Scoring				
	1st	2nd	3rd	4th	TOT
ND	22	27	20	19	88
UP	21	12	17	7	57



Officials: Denise Brooks, Jeffrey Smith, Kevin Sparrock

Notre Dame - 49

NO.	Name	F	Min	FG			3P			FT			Rebounds			Fouls		TP	AS	TO	ST	Blocks		+/-
				M-A	M-A	M-A	OR	DR	TOT	PF	FD	BS	BA											
20	Liatu King	F	16:10	4-6	0-0	1-2	1	2	3	1	1	9	2	1	0	0	0	0	0	0	0	13		
21	Maddy Westbeld	F	05:14	0-1	0-0	0-0	0	0	0	2	0	0	0	0	0	0	0	0	0	0	0	4		
3	Hannah Hidalgo	G	16:50	1-10	0-4	2-2	0	0	0	1	2	4	1	1	2	0	2	7						
5	Olivia Miles	G	18:27	5-6	5-6	0-0	0	1	1	0	1	15	4	1	1	0	0	17						
11	Sonia Citron	G	18:31	7-7	4-4	1-2	1	4	5	1	1	19	2	0	1	0	0	16						
32	Liza Karlen		13:34	0-1	0-0	0-0	0	1	1	2	0	0	0	1	1	0	0	12						
8	Cassandre Prosper		08:14	1-1	0-0	0-0	0	2	2	1	0	2	0	0	0	0	0	11						
13	Kate Koval		03:00	0-0	0-0	0-0	0	2	2	2	0	0	0	0	3	1	1	0	0	0	0			
Team							1	0	1			0			0									
<b>Totals</b>				18-32	9-14	4-6	3	12	15	10	5	49	9	7	6	1	2	16						

Shooting By Period		
1 <sup>st</sup> FG%	8-16	50.0%
3PT%	3-6	50.0%
FT%	3-4	75%
2 <sup>nd</sup> FG%	10-16	62.5%
3PT%	6-8	75.0%
FT%	1-2	50%
GM FG%	18-32	56.3%
3PT%	9-14	64.3%
FT%	4-6	66.7%

Dead Ball Rebounds: 1, 0

Technical Fouls::NONE

Pittsburgh - 33

NO.	Name	F	Min	FG			3P			FT			Rebounds			Fouls		TP	AS	TO	ST	Blocks		+/-
				M-A	M-A	M-A	OR	DR	TOT	PF	FD	BS	BA											
3	MaKayla Elmore	F	18:48	0-1	0-1	1-2	0	4	4	1	1	1	2	2	1	0	0	-16						
15	Khadija Faye	C	18:56	5-10	0-0	2-2	1	5	6	1	4	12	0	1	2	2	1	-12						
0	Brooklynn Miles	G	16:16	0-1	0-0	0-0	0	1	1	1	0	0	3	2	0	0	0	-17						
11	Marley Washenitz	G	20:00	3-6	1-1	3-3	0	1	1	2	1	10	2	1	2	0	0	-16						
23	Mikayla Johnson	G	18:56	2-5	0-1	4-4	0	0	0	0	3	8	1	1	0	0	0	-12						
1	Aaryn Battle		04:48	1-1	0-0	0-0	0	0	0	0	1	2	0	2	0	0	0	-3						
22	Audrey Biggs		02:16	0-0	0-0	0-0	0	0	0	0	0	0	0	0	0	0	0	-4						
Team							0	1	1			0			2									
<b>Totals</b>				11-24	1-3	10-11	1	12	13	5	10	33	8	11	5	2	1	-16						

Shooting By Period		
1 <sup>st</sup> FG%	7-11	63.6%
3PT%	0-1	0.0%
FT%	7-7	100%
2 <sup>nd</sup> FG%	4-13	30.8%
3PT%	1-2	50.0%
FT%	3-4	75%
GM FG%	11-24	45.8%
3PT%	1-3	33.3%
FT%	10-11	90.9%

Dead Ball Rebounds: 1, 0

Technical Fouls::NONE

	ND	UP
Biggest lead	17 (2 <sup>nd</sup> 1:12)	3 (1 <sup>st</sup> 6:39)
Best Scoring Run	7 (1 <sup>st</sup> 5:36)	5 (1 <sup>st</sup> 1:53)
Lead Changes	3	
Times Tied	1	
Time with Lead	16:43	02:22

Points from	ND	UP
Turnovers	9	6
Paint	18	12
Second Chance	3	0
Fast Breaks	18	2
Bench	2	2

	Period by Period Scoring				
	1st	2nd	3rd	4th	TOT
ND	22	27	20	19	88
UP	21	12	17	7	57



**Notre Dame at Pittsburgh**

02/13/25 Petersen Events Center, Pittsburgh  
2024-25 Women's Basketball

**Game Time:** 8:00 PM  
**Game Duration:** 1:51  
**Attendance:** 1,774

**Officials:** Denise Brooks, Jeffrey Smith, Kevin Sparrock

**Period 3**

**Quarter Starters:**

<b>UP</b>	0 Miles B	3 Elmore M	11 Washenitz M	15 Faye K	23 Johnson M
<b>ND</b>	3 Hidalgo H	5 Miles O	11 Citron S	20 King L	21 Westbeld M

Game Time	UP	Score	Diff	ND
10:00	1 BATTLE A substitution out			
10:00	0 MILES B substitution in			
10:00				8 PROSPER C substitution out
10:00				20 KING L substitution in
09:48				11 CITRON S 3pt FG , jump shot missed
09:44	23 JOHNSON M defensive rebound (1)			
09:21	15 FAYE K 2pt FG in the paint, layup blocked			
09:21				21 WESTBELD M block (1)
09:21	offensive rebound (15)			
09:21				21 WESTBELD M substitution out
09:21				32 KARLEN L substitution in
09:21	Timeout media			
09:19	11 WASHENITZ M 2pt FG second chance outside the paint, jump shot missed			
09:16				11 CITRON S defensive rebound (6)
08:58				32 KARLEN L substitution out
08:58				21 WESTBELD M substitution in
08:58				20 KING L 2pt FG outside the paint, jump shot missed
08:58				3 HIDALGO H offensive rebound (1)
08:58				3 HIDALGO H 2pt FG second chance outside the paint, pull up jump shot missed
08:58	15 FAYE K defensive rebound (7)			
08:58	15 FAYE K 2pt FG in the paint, hook shot made (14)	<b>35-49</b>	<b>-14</b>	
08:58				5 MILES O 3pt FG , step back jump shot missed
08:57				20 KING L offensive rebound (4)
08:54	15 FAYE K foul personal (2 - 1)			20 KING L foul drawn (2)
08:03				20 KING L 2pt FG second chance outside the paint, jump shot missed
08:01	15 FAYE K defensive rebound (8)			
07:49	11 WASHENITZ M 3pt FG , jump shot missed			
07:47				20 KING L defensive rebound (5)
07:39		<b>35-52</b>	<b>-17</b>	5 MILES O 3pt FG fast break, jump shot made (18)
07:39				3 HIDALGO H assist (2)
07:04	11 WASHENITZ M 2pt FG outside the paint, jump shot blocked			
07:04				11 CITRON S block (1)
07:04	offensive dead ball rebound (2)			
07:04	turnover shot clock (12)			
07:04	3 ELMORE M substitution out			
07:04	22 BIGGS A substitution in			
07:04				21 WESTBELD M substitution out
07:04				32 KARLEN L substitution in
06:48	22 BIGGS A steal (1)			32 KARLEN L turnover bad pass (2)
06:46	11 WASHENITZ M foul drawn (2)			3 HIDALGO H foul personal (2 - 1)



**Notre Dame at Pittsburgh**

02/13/25 Petersen Events Center, Pittsburgh  
2024-25 Women's Basketball

**Game Time:** 8:00 PM  
**Game Duration:** 1:51  
**Attendance:** 1,774

**Officials:** Denise Brooks, Jeffrey Smith, Kevin Sparrock

Game Time	UP	Score	Diff	ND
06:26	23 JOHNSON M 2pt FG from turnover in the paint, turnaround jump shot missed			
06:23				5 MILES O defensive rebound (2)
06:20		<b>35-55</b>	<b>-20</b>	3 HIDALGO H 3pt FG fast break, pull up jump shot made (7)
06:20				5 MILES O assist (5)
05:55	jump ball situation			
05:55	22 BIGGS A substitution out			
05:55	3 ELMORE M substitution in			
05:55				20 KING L substitution out
05:55				13 KOVAL K substitution in
05:51	23 JOHNSON M 3pt FG , jump shot missed			
05:48				13 KOVAL K defensive rebound (3)
05:34	0 MILES B steal (1)			3 HIDALGO H turnover lost ball (2)
05:28	0 MILES B 2pt FG from turnover in the paint, layup missed			
05:23	15 FAYE K offensive rebound (9)			
05:22	15 FAYE K turnover bad pass (2)			3 HIDALGO H steal (3)
05:21	11 WASHENITZ M foul personal (3 - 2)			11 CITRON S foul drawn (2)
05:17		<b>35-57</b>	<b>-22</b>	11 CITRON S 2pt FG from turnover in the paint, layup made (21)
05:17				32 KARLEN L assist (1)
05:09	0 MILES B turnover lost ball (3)			3 HIDALGO H steal (4)
05:05		<b>35-59</b>	<b>-24</b>	3 HIDALGO H 2pt FG fast break from turnover in the paint, layup made (9)
04:54	23 JOHNSON M 2pt FG in the paint, driving layup missed			
04:54				11 CITRON S defensive rebound (7)
04:52	Timeout media			
04:52	0 MILES B substitution out			
04:52	1 BATTLE A substitution in			
04:39	11 WASHENITZ M foul shooting (4 - 3)			3 HIDALGO H foul drawn (3)
04:39				11 CITRON S substitution out
04:39				8 PROSPER C substitution in
04:39		<b>35-60</b>	<b>-25</b>	3 HIDALGO H free throw 1 - 2 made (10)
04:39		<b>35-61</b>	<b>-26</b>	3 HIDALGO H free throw 2 - 2 made (11)
04:39	11 WASHENITZ M substitution out			
04:39	14 BOSWELL R substitution in			
04:24	15 FAYE K 2pt FG in the paint, driving layup made (16)	<b>37-61</b>	<b>-24</b>	
04:18				5 MILES O turnover bad pass (2)
04:07	15 FAYE K turnover lost ball (3)			3 HIDALGO H steal (5)
04:02				3 HIDALGO H 3pt FG from turnover, step back jump shot missed
03:59	14 BOSWELL R defensive rebound (1)			
03:54	23 JOHNSON M 2pt FG fast break in the paint, driving layup made (10)	<b>39-61</b>	<b>-22</b>	
03:54	23 JOHNSON M foul drawn (4)			8 PROSPER C foul shooting (2 - 2)
03:54				32 KARLEN L substitution out
03:54				21 WESTBELD M substitution in
03:54	23 JOHNSON M free throw fast break 1 - 1 made (11)	<b>40-61</b>	<b>-21</b>	
03:42				21 WESTBELD M 2pt FG outside the paint, pull up jump shot missed
03:37				8 PROSPER C offensive rebound (3)
03:37				8 PROSPER C 2pt FG second chance in the paint, tip-in layup missed
03:36				5 MILES O offensive rebound (3)



**Notre Dame at Pittsburgh**

02/13/25 Petersen Events Center, Pittsburgh  
2024-25 Women's Basketball

**Game Time:** 8:00 PM  
**Game Duration:** 1:51  
**Attendance:** 1,774

**Officials:** Denise Brooks, Jeffrey Smith, Kevin Sparrock

Game Time	UP	Score	Diff	ND
03:35		<b>40-63</b>	<b>-23</b>	5 MILES O 2pt FG second chance in the paint, turnaround jump shot made (20)
03:22	15 FAYE K 2pt FG in the paint, turnaround jump shot made (18)	<b>42-63</b>	<b>-21</b>	
03:22	1 BATTLE A assist (1)			
03:12				3 HIDALGO H 2pt FG in the paint, floating jump shot missed
03:10	15 FAYE K defensive rebound (10)			
02:59	15 FAYE K 2pt FG outside the paint, turnaround jump shot made (20)	<b>44-63</b>	<b>-19</b>	
02:59	1 BATTLE A assist (2)			
02:49	15 FAYE K steal (3)			3 HIDALGO H turnover bad pass (3)
02:45	14 BOSWELL R 2pt FG fast break from turnover in the paint, driving layup made (2)	<b>46-63</b>	<b>-17</b>	
02:45	1 BATTLE A assist (3)			
02:45	14 BOSWELL R foul drawn (1)			3 HIDALGO H foul shooting (3 - 3)
02:45	15 FAYE K substitution out			
02:45	22 BIGGS A substitution in			
02:45				3 HIDALGO H substitution out
02:45				13 KOVAL K substitution out
02:45				11 CITRON S substitution in
02:45				20 KING L substitution in
02:45	14 BOSWELL R free throw fast break 1 - 1 made (3)	<b>47-63</b>	<b>-16</b>	
02:21				21 WESTBELD M 2pt FG in the paint, turnaround jump shot missed
02:19	3 ELMORE M defensive rebound (5)			
02:10	23 JOHNSON M foul drawn (5)			8 PROSPER C foul shooting (3 - 4)
02:10	23 JOHNSON M free throw 1 - 2 made (12)	<b>48-63</b>	<b>-15</b>	
02:10	23 JOHNSON M free throw 2 - 2 made (13)	<b>49-63</b>	<b>-14</b>	
01:55		<b>49-65</b>	<b>-16</b>	20 KING L 2pt FG in the paint, layup made (11)
01:55				21 WESTBELD M assist (1)
01:46	23 JOHNSON M turnover bad pass (2)			21 WESTBELD M steal (1)
01:29	3 ELMORE M foul personal (2 - 4)			20 KING L foul drawn (3)
01:29	22 BIGGS A substitution out			
01:29	15 FAYE K substitution in			
01:22				20 KING L 2pt FG from turnover in the paint, pull up jump shot missed
01:21				offensive rebound (25)
01:21	23 JOHNSON M foul personal (1 - 5)			11 CITRON S foul drawn (3)
01:21				11 CITRON S free throw 1 - 2 missed
01:21				offensive dead ball rebound (2)
01:21		<b>49-66</b>	<b>-17</b>	11 CITRON S free throw 2 - 2 made (22)
01:08	14 BOSWELL R turnover bad pass (1)			20 KING L steal (1)
01:02	23 JOHNSON M steal (1)			20 KING L turnover bad pass (2)
00:37	15 FAYE K foul drawn (5)			21 WESTBELD M foul shooting (3 - 5)
00:37	15 FAYE K free throw 1 - 2 made (21)	<b>50-66</b>	<b>-16</b>	
00:37	15 FAYE K free throw 2 - 2 missed			
00:36				11 CITRON S defensive rebound (8)
00:11		<b>50-69</b>	<b>-19</b>	5 MILES O 3pt FG , step back jump shot made (23)
00:00	15 FAYE K 2pt FG in the paint, hook shot missed			
00:00	23 JOHNSON M offensive rebound (2)			
00:00	23 JOHNSON M 2pt FG second chance in the paint, tip-in layup missed			



Official Basketball Play by Play - 3rd Period

### Notre Dame at Pittsburgh

02/13/25 Petersen Events Center, Pittsburgh  
2024-25 Women's Basketball

Game Time: 8:00 PM

Game Duration: 1:51

Attendance: 1,774

Officials: Denise Brooks, Jeffrey Smith, Kevin Sparrock

Game Time	UP	Score	Diff	ND
00:00	offensive dead ball rebound (3)			
END OF PERIOD				
UP 50-69 ND				



Notre Dame at Pittsburgh

02/13/25 Petersen Events Center, Pittsburgh  
2024-25 Women's Basketball

Game Time: 8:00 PM  
Game Duration: 1:51  
Attendance: 1,774

Officials: Denise Brooks, Jeffrey Smith, Kevin Sparrock

Notre Dame - 20

NO.	Name	F	Min	FG			Rebounds			Fouls		TP	AS	TO	ST	Blocks		+/-
				M-A	3P	FT	OR	DR	TOT	PF	FD					BS	BA	
20	Liatu King	F	06:50	1-4	0-0	0-0	1	1	2	0	2	2	0	1	1	0	0	6
21	Maddy Westbeld	F	06:27	0-2	0-0	0-0	0	0	0	1	0	0	1	0	1	1	0	-2
3	Hannah Hidalgo	G	07:15	2-5	1-2	2-2	1	0	1	2	1	7	1	2	3	0	0	1
5	Olivia Miles	G	10:00	3-4	2-3	0-0	1	1	2	0	0	8	1	1	0	0	0	3
11	Sonia Citron	G	08:06	1-2	0-1	1-2	0	3	3	0	2	3	0	0	0	1	0	10
32	Liza Karlen		03:33	0-0	0-0	0-0	0	0	0	0	0	0	1	1	0	0	0	5
13	Kate Koval		03:10	0-0	0-0	0-0	0	1	1	0	0	0	0	0	0	0	0	-3
8	Cassandre Prosper		04:39	0-1	0-0	0-0	1	0	1	2	0	0	0	0	0	0	0	-5
Team							1	0	1			0		0				
<b>Totals</b>				7-18	3-6	3-4	5	6	11	5	5	20	4	5	5	2	0	3

Shooting By Period		
3rd FG%	7-18	38.9%
3PT%	3-6	50.0%
FT%	3-4	75%
GM FG%	7-18	38.9%
3PT%	3-6	50.0%
FT%	3-4	75.0%

Dead Ball Rebounds: 1, 0

Technical Fouls::NONE

Pittsburgh - 17

NO.	Name	F	Min	FG			Rebounds			Fouls		TP	AS	TO	ST	Blocks		+/-
				M-A	3P	FT	OR	DR	TOT	PF	FD					BS	BA	
3	MaKayla Elmore	F	08:51	0-0	0-0	0-0	0	1	1	1	0	0	0	0	0	0	0	0
15	Khadija Faye	C	08:44	4-6	0-0	1-2	1	3	4	1	1	9	0	2	1	0	1	-4
0	Brooklynn Miles	G	05:08	0-1	0-0	0-0	0	0	0	0	0	0	0	1	1	0	0	-8
11	Marley Washenitz	G	05:21	0-3	0-1	0-0	0	0	0	2	1	0	0	0	0	0	1	-10
23	Mikayla Johnson	G	10:00	1-5	0-1	3-3	1	1	2	1	2	5	0	1	1	0	0	-3
22	Audrey Biggs		02:25	0-0	0-0	0-0	0	0	0	0	0	0	0	0	1	0	0	-2
1	Aaryn Battle		04:52	0-0	0-0	0-0	0	0	0	0	0	0	3	0	0	0	0	5
14	Raeven Boswell		04:39	1-1	0-0	1-1	0	1	1	0	1	3	0	1	0	0	0	7
Team							1	0	1			0		1				
<b>Totals</b>				6-16	0-2	5-6	3	6	9	5	5	17	3	6	4	0	2	-3

Shooting By Period		
3rd FG%	6-16	37.5%
3PT%	0-2	0.0%
FT%	5-6	83.3%
GM FG%	6-16	37.5%
3PT%	0-2	0.0%
FT%	5-6	83.3%

Dead Ball Rebounds: 2, 0

Technical Fouls::NONE

	ND	UP
Biggest lead	26 (3 <sup>rd</sup> 4:39)	0 (1 <sup>st</sup> 10:00)
Best Scoring Run	12(3 <sup>rd</sup> 4:39)	9(3 <sup>rd</sup> 2:10)
Lead Changes	0	
Times Tied	0	
Time with Lead	09:48	00:00

Points from	ND	UP
Turnovers	5	4
Paint	8	10
Second Chance	3	0
Fast Breaks	8	6
Bench	0	3

Period by Period Scoring					
	1st	2nd	3rd	4th	TOT
ND	22	27	20	19	88
UP	21	12	17	7	57



**Notre Dame at Pittsburgh**

02/13/25 Petersen Events Center, Pittsburgh  
2024-25 Women's Basketball

**Game Time:** 8:00 PM  
**Game Duration:** 1:51  
**Attendance:** 1,774

**Officials:** Denise Brooks, Jeffrey Smith, Kevin Sparrock

**Period 4**

**Quarter Starters:**

<b>UP</b>	1 Battle A	3 Elmore M	11 Washenitz M	15 Faye K	23 Johnson M
<b>ND</b>	3 Hidalgo H	5 Miles O	11 Citron S	20 King L	21 Westbeld M

Game Time	UP	Score	Diff	ND
10:00	14 BOSWELL R substitution out			
10:00	11 WASHENITZ M substitution in			
10:00				8 PROSPER C substitution out
10:00				3 HIDALGO H substitution in
09:46	15 FAYE K steal (4)			20 KING L turnover bad pass (3)
09:21	15 FAYE K 2pt FG from turnover in the paint, layup missed			
09:18				11 CITRON S defensive rebound (9)
09:05		<b>50-72</b>	<b>-22</b>	21 WESTBELD M 3pt FG , jump shot made (3)
09:05				20 KING L assist (3)
08:46	23 JOHNSON M turnover bad pass (3)			11 CITRON S steal (2)
08:39				5 MILES O 2pt FG from turnover in the paint, driving layup missed
08:37	23 JOHNSON M defensive rebound (3)			
08:24	3 ELMORE M 3pt FG , jump shot missed			
08:21				5 MILES O defensive rebound (4)
08:14				5 MILES O 3pt FG , pull up jump shot missed
08:11	15 FAYE K defensive rebound (11)			
08:03	1 BATTLE A 2pt FG in the paint, driving layup missed			
08:01				5 MILES O defensive rebound (5)
07:54		<b>50-74</b>	<b>-24</b>	5 MILES O 2pt FG in the paint, driving layup made (25)
07:54				3 HIDALGO H assist (3)
07:54	Timeout 30 Sec			
07:54	Timeout media			
07:54				5 MILES O substitution out
07:54				8 PROSPER C substitution in
07:54	1 BATTLE A substitution out			
07:54	0 MILES B substitution in			
07:39	23 JOHNSON M 2pt FG in the paint, driving layup missed			
07:36	15 FAYE K offensive rebound (12)			
07:36	15 FAYE K 2pt FG second chance in the paint, tip-in layup made (23)	<b>52-74</b>	<b>-22</b>	
07:29		<b>52-76</b>	<b>-24</b>	8 PROSPER C 2pt FG in the paint, driving layup made (4)
07:29				3 HIDALGO H assist (4)
07:17	15 FAYE K foul drawn (6)			21 WESTBELD M foul personal (4 - 1)
07:17				21 WESTBELD M substitution out
07:17				32 KARLEN L substitution in
07:06	0 MILES B 2pt FG in the paint, floating jump shot blocked			
07:06				32 KARLEN L block (1)
07:01				32 KARLEN L defensive rebound (2)
06:51				20 KING L turnover travel (4)
06:34	23 JOHNSON M 2pt FG from turnover in the paint, driving layup made (15)	<b>54-76</b>	<b>-22</b>	
06:34	3 ELMORE M assist (3)			
06:14		<b>54-78</b>	<b>-24</b>	32 KARLEN L 2pt FG in the paint, layup made (2)





**Notre Dame at Pittsburgh**

02/13/25 Petersen Events Center, Pittsburgh  
2024-25 Women's Basketball

**Game Time:** 8:00 PM  
**Game Duration:** 1:51  
**Attendance:** 1,774

**Officials:** Denise Brooks, Jeffrey Smith, Kevin Sparrock

Game Time	UP	Score	Diff	ND
06:14				3 HIDALGO H assist (5)
05:55	11 WASHENITZ M 3pt FG , step back jump shot made (13)	<b>57-78</b>	<b>-21</b>	
05:44				20 KING L 2pt FG in the paint, layup missed
05:42	15 FAYE K defensive rebound (13)			
05:25	15 FAYE K turnover travel (4)			
05:03				3 HIDALGO H 2pt FG from turnover in the paint, floating jump shot missed
05:01	23 JOHNSON M defensive rebound (4)			
04:53	3 ELMORE M 3pt FG , jump shot missed			
04:51				11 CITRON S defensive rebound (10)
04:40		<b>57-80</b>	<b>-23</b>	32 KARLEN L 2pt FG in the paint, layup made (4)
04:40				20 KING L assist (4)
04:13	15 FAYE K 2pt FG in the paint, pull up jump shot missed			
04:11				20 KING L defensive rebound (6)
04:04	15 FAYE K foul shooting (3 - 1)			32 KARLEN L foul drawn (1)
04:04	15 FAYE K substitution out			
04:04	22 BIGGS A substitution in			
04:04				11 CITRON S substitution out
04:04				20 KING L substitution out
04:04				5 MILES O substitution in
04:04				13 KOVAL K substitution in
04:04		<b>57-81</b>	<b>-24</b>	32 KARLEN L free throw 1 - 2 made (5)
04:04		<b>57-82</b>	<b>-25</b>	32 KARLEN L free throw 2 - 2 made (6)
03:42	11 WASHENITZ M turnover lost ball (2)			3 HIDALGO H steal (6)
03:36				3 HIDALGO H 2pt FG from turnover in the paint, floating jump shot missed
03:35	3 ELMORE M defensive rebound (6)			
03:35	Timeout 60 Sec			
03:35	3 ELMORE M substitution out			
03:35	15 FAYE K substitution in			
03:18	23 JOHNSON M 3pt FG , jump shot missed			
03:16				13 KOVAL K defensive rebound (4)
03:02		<b>57-85</b>	<b>-28</b>	5 MILES O 3pt FG , jump shot made (28)
03:02				13 KOVAL K assist (1)
02:49	0 MILES B turnover lost ball (4)			3 HIDALGO H steal (7)
02:49				3 HIDALGO H substitution out
02:49				25 CERNUGEL S substitution in
02:27	11 WASHENITZ M foul drawn (3)			32 KARLEN L foul offensive (3 - 2)
02:27				32 KARLEN L turnover offensive (3)
02:13	0 MILES B 2pt FG from turnover in the paint, driving layup missed			
02:11	15 FAYE K offensive rebound (14)			
02:11	15 FAYE K 2pt FG from turnover second chance in the paint, tip-in layup missed			
02:11	15 FAYE K offensive rebound (15)			
02:11	15 FAYE K foul drawn (7)			32 KARLEN L foul personal (4 - 3)
02:05	11 WASHENITZ M 3pt FG from turnover second chance, pull up jump shot missed			
02:03	0 MILES B offensive rebound (2)			
01:58	23 JOHNSON M 2pt FG from turnover second chance in the paint, driving layup missed			



**Notre Dame at Pittsburgh**

02/13/25 Petersen Events Center, Pittsburgh  
2024-25 Women's Basketball

**Officials:** Denise Brooks, Jeffrey Smith, Kevin Sparrock

Game Time	UP	Score	Diff	ND
01:55				13 KOVAL K defensive rebound (5)
01:50				5 MILES O 3pt FG , pull up jump shot missed
01:46	15 FAYE K defensive rebound (16)			
01:34	15 FAYE K 2pt FG outside the paint, jump shot missed			
01:31				5 MILES O defensive rebound (6)
01:28	15 FAYE K foul shooting (4 - 2)			13 KOVAL K foul drawn (1)
01:28	0 MILES B substitution out			
01:28	15 FAYE K substitution out			
01:28	1 BATTLE A substitution in			
01:28	14 BOSWELL R substitution in			
01:28				13 KOVAL K free throw 1 - 2 missed
01:28				offensive dead ball rebound (3)
01:28		<b>57-86</b>	<b>-29</b>	13 KOVAL K free throw 2 - 2 made (1)
01:07	1 BATTLE A 2pt FG outside the paint, jump shot missed			
01:05				32 KARLEN L defensive rebound (3)
00:45				13 KOVAL K 2pt FG in the paint, hook shot missed
00:41	14 BOSWELL R defensive rebound (2)			
00:36	1 BATTLE A foul drawn (2)			8 PROSPER C foul personal (4 - 4)
00:32	23 JOHNSON M 2pt FG outside the paint, jump shot missed			
00:28				5 MILES O defensive rebound (7)
00:16				5 MILES O 3pt FG , step back jump shot missed
00:12				13 KOVAL K offensive rebound (6)
00:12		<b>57-88</b>	<b>-31</b>	13 KOVAL K 2pt FG second chance in the paint, tip-in layup made (3)
00:03	23 JOHNSON M 3pt FG , jump shot missed			
00:00				13 KOVAL K defensive rebound (7)
00:00	11 WASHENITZ M steal (3)			13 KOVAL K turnover lost ball (4)
<b>END OF GAME</b>				
<b>UP 57-88 ND</b>				



**Notre Dame at Pittsburgh**

02/13/25 Petersen Events Center, Pittsburgh  
2024-25 Women's Basketball

Game Time: 8:00 PM  
Game Duration: 1:51  
Attendance: 1,774

Officials: Denise Brooks, Jeffrey Smith, Kevin Sparrock

**Notre Dame - 19**

NO.	Name	F	Min	FG			Rebounds			Fouls		TP	AS	TO	ST	Blocks		+/-
				M-A	3P	FT	OR	DR	TOT	PF	FD					BS	BA	
20	Liatu King	F	05:56	0-1	0-0	0-0	0	1	1	0	0	0	2	2	0	0	0	4
21	Maddy Westbeld	F	02:43	1-1	1-1	0-0	0	0	0	1	0	3	0	0	0	0	0	5
3	Hannah Hidalgo	G	07:11	0-2	0-0	0-0	0	0	0	0	0	3	0	2	0	0	9	
5	Olivia Miles	G	06:10	2-6	1-4	0-0	0	4	4	0	0	5	0	0	0	0	13	
11	Sonia Citron	G	05:56	0-0	0-0	0-0	0	2	2	0	0	0	0	0	1	0	4	
8	Cassandre Prosper		07:54	1-1	0-0	0-0	0	0	0	1	0	2	0	0	0	0	7	
32	Liza Karlen		07:17	2-2	0-0	2-2	0	2	2	2	1	6	0	1	0	1	7	
13	Kate Koval		04:04	1-2	0-0	1-2	1	3	4	0	1	3	1	1	0	0	8	
25	Sarah Cernugel		02:49	0-0	0-0	0-0	0	0	0	0	0	0	0	0	0	0	3	
Team							0	0	0			0						
<b>Totals</b>				7-15	2-5	3-4	1	12	13	4	2	19	6	4	3	1	0	12

Shooting By Period		
4 <sup>th</sup> FG%	7-15	46.7%
3PT%	2-5	40.0%
FT%	3-4	75%
GM FG%	7-15	46.7%
3PT%	2-5	40.0%
FT%	3-4	75.0%

Dead Ball Rebounds: 1, 0

Technical Fouls::NONE

**Pittsburgh - 7**

NO.	Name	F	Min	FG			Rebounds			Fouls		TP	AS	TO	ST	Blocks		+/-
				M-A	3P	FT	OR	DR	TOT	PF	FD					BS	BA	
3	MaKayla Elmore	F	06:25	0-2	0-2	0-0	0	1	1	0	0	0	1	0	0	0	0	-6
15	Khadija Faye	C	08:03	1-5	0-0	0-0	3	3	6	2	2	2	0	1	1	0	0	-7
0	Brooklynn Miles	G	06:26	0-2	0-0	0-0	1	0	1	0	0	0	0	1	0	0	1	-4
11	Marley Washenitz	G	10:00	1-2	1-2	0-0	0	0	0	0	1	3	0	1	1	0	0	-12
23	Mikayla Johnson	G	10:00	1-6	0-2	0-0	0	2	2	0	0	2	0	1	0	0	0	-12
22	Audrey Biggs		04:04	0-0	0-0	0-0	0	0	0	0	0	0	0	0	0	0	0	-8
1	Aaryn Battle		03:34	0-2	0-0	0-0	0	0	0	0	1	0	0	0	0	0	0	-8
14	Raeven Boswell		01:28	0-0	0-0	0-0	0	1	1	0	0	0	0	0	0	0	0	-3
Team							0	0	0			0						
<b>Totals</b>				3-19	1-6	0-0	4	7	11	2	4	7	1	4	2	0	1	-12

Shooting By Period		
4 <sup>th</sup> FG%	3-19	15.8%
3PT%	1-6	16.7%
FT%	0-0	0%
GM FG%	3-19	15.8%
3PT%	1-6	16.7%
FT%	0-0	0.0%

Dead Ball Rebounds: 0, 0

Technical Fouls::NONE

	ND	UP
Biggest lead	31 (4 <sup>th</sup> 0:12)	0 (1 <sup>st</sup> 10:00)
Best Scoring Run	10(4 <sup>th</sup> 0:12)	3(4 <sup>th</sup> 5:55)
Lead Changes	0	
Times Tied	0	
Time with Lead	09:21	00:00

Points from	ND	UP
Turnovers	0	2
Paint	10	4
Second Chance	2	2
Fast Breaks	0	0
Bench	11	0

Period by Period Scoring					
	1st	2nd	3rd	4th	TOT
ND	22	27	20	19	88
UP	21	12	17	7	57



**Notre Dame at Pittsburgh**

02/13/25 Petersen Events Center, Pittsburgh  
2024-25 Women's Basketball

Game Time: 8:00 PM  
Game Duration: 1:51  
Attendance: 1,774

Officials: Denise Brooks, Jeffrey Smith, Kevin Sparrock

**Notre Dame - 39**

NO.	Name	Min	FG			Rebounds			Fouls		TP	AS	TO	ST	Blocks		+/-
			M-A	3P	FT	OR	DR	TOT	PF	FD					BS	BA	
20	Liatu King	F 12:46	1-5	0-0	0-0	1	2	3	0	2	2	2	3	1	0	0	10
21	Maddy Westbeld	F 09:10	1-3	1-1	0-0	0	0	0	2	0	3	1	0	1	1	0	3
3	Hannah Hidalgo	G 14:26	2-7	1-2	2-2	1	0	1	2	1	7	4	2	5	0	0	10
5	Olivia Miles	G 16:10	5-10	3-7	0-0	1	5	6	0	0	13	1	1	0	0	0	16
11	Sonia Citron	G 14:02	1-2	0-1	1-2	0	5	5	0	2	3	0	0	1	1	0	14
32	Liza Karlen	10:50	2-2	0-0	2-2	0	2	2	2	1	6	1	2	0	1	0	12
13	Kate Koval	07:14	1-2	0-0	1-2	1	4	5	0	1	3	1	1	0	0	0	5
8	Cassandre Prosper	12:33	1-2	0-0	0-0	1	0	1	3	0	2	0	0	0	0	0	2
25	Sarah Cernugel	02:49	0-0	0-0	0-0	0	0	0	0	0	0	0	0	0	0	0	3
Team						1	0	1			0		0				
<b>Totals</b>			14-33	5-11	6-8	6	18	24	9	7	39	10	9	8	3	0	15

Shooting By Period		
3 <sup>rd</sup> FG%	7-18	38.9%
3PT%	3-6	50.0%
FT%	3-4	75%
4 <sup>th</sup> FG%	7-15	46.7%
3PT%	2-5	40.0%
FT%	3-4	75%
GM FG%	14-33	42.4%
3PT%	5-11	45.5%
FT%	6-8	75.0%

Dead Ball Rebounds: 2, 0

Technical Fouls::NONE

**Pittsburgh - 24**

NO.	Name	Min	FG			Rebounds			Fouls		TP	AS	TO	ST	Blocks		+/-
			M-A	3P	FT	OR	DR	TOT	PF	FD					BS	BA	
3	MaKayla Elmore	F 15:16	0-2	0-2	0-0	0	2	2	1	0	0	1	0	0	0	0	-6
15	Khadija Faye	C 16:47	5-11	0-0	1-2	4	6	10	3	3	11	0	3	2	0	1	-11
0	Brooklynn Miles	G 11:34	0-3	0-0	0-0	1	0	1	0	0	0	0	2	1	0	1	-12
11	Marley Washenitz	G 15:21	1-5	1-3	0-0	0	0	0	2	2	3	0	1	1	0	1	-22
23	Mikayla Johnson	G 20:00	2-11	0-3	3-3	1	3	4	1	2	7	0	2	1	0	0	-15
22	Audrey Biggs	06:29	0-0	0-0	0-0	0	0	0	0	0	0	0	0	1	0	0	-10
1	Aaryn Battle	08:26	0-2	0-0	0-0	0	0	0	0	1	0	3	0	0	0	0	-3
14	Raeven Boswell	06:07	1-1	0-0	1-1	0	2	2	0	1	3	0	1	0	0	0	4
Team						1	0	1			0		1				
<b>Totals</b>			9-35	1-8	5-6	7	13	20	7	9	24	4	10	6	0	3	-15

Shooting By Period		
3 <sup>rd</sup> FG%	6-16	37.5%
3PT%	0-2	0.0%
FT%	5-6	83.3%
4 <sup>th</sup> FG%	3-19	15.8%
3PT%	1-6	16.7%
FT%	0-0	0%
GM FG%	9-35	25.7%
3PT%	1-8	12.5%
FT%	5-6	83.3%

Dead Ball Rebounds: 2, 0

Technical Fouls::NONE

	ND	UP
Biggest lead	31 (4 <sup>th</sup> 0:12)	0 (1 <sup>st</sup> 10:00)
Best Scoring Run	12(3 <sup>rd</sup> 4:39)	9(3 <sup>rd</sup> 2:10)
Lead Changes	0	
Times Tied	0	
Time with Lead	19:48	00:00

Points from	ND	UP
Turnovers	5	6
Paint	18	14
Second Chance	5	2
Fast Breaks	8	6
Bench	11	3

Period by Period Scoring					
	1st	2nd	3rd	4th	TOT
ND	22	27	20	19	88
UP	21	12	17	7	57



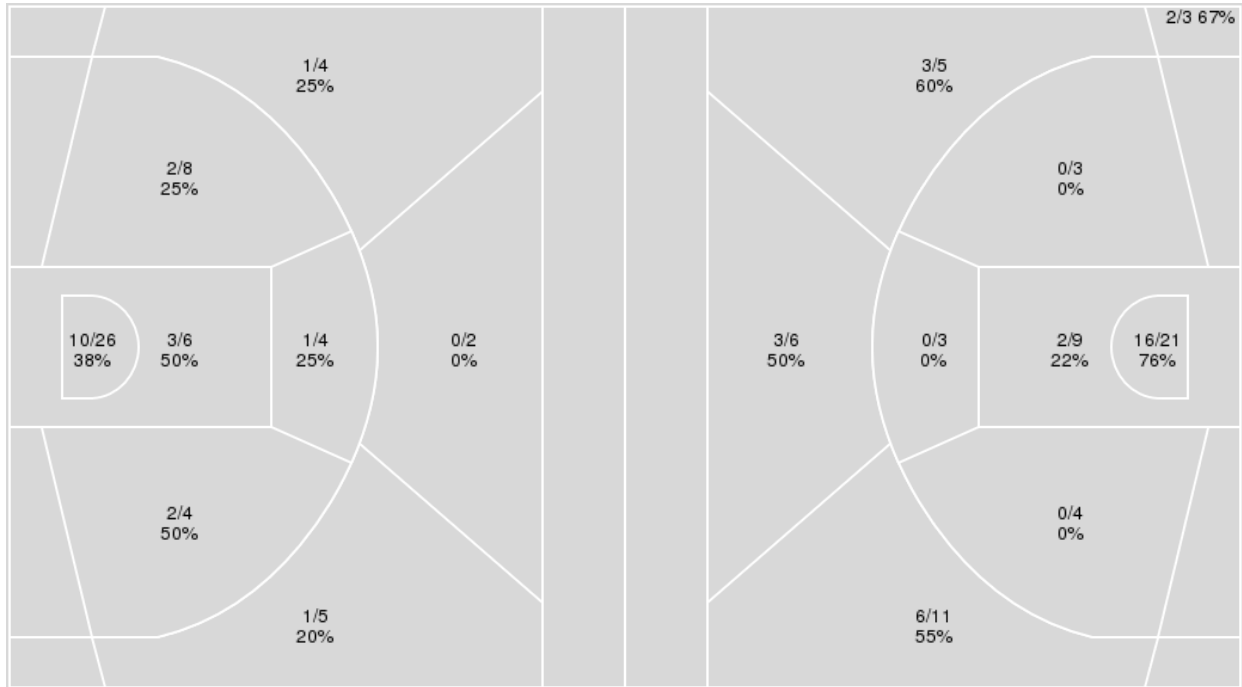
**Officials:** Denise Brooks, Jeffrey Smith, Kevin Sparrock

{ Players => 0, 1, 2, 3, 5, 10, 11, 13, 14, 15, 20, 22, 23; } FG Types => All; Results => All;

{ Players => 2, 3, 5, 8, 10, 11, 13, 14, 15, 20, 21, 22, 25, 32; } FG Types => All; Results => All;

**Pittsburgh**

**Notre Dame**



Pittsburgh	M/A	%
Field Goals	20/59	34
2 Points	18/48	38
3 Points	2/11	18
Free Throws	15/17	88

Notre Dame	M/A	%
Field Goals	32/65	49
2 Points	18/40	45
3 Points	14/25	56
Free Throws	10/14	71



**Notre Dame at Pittsburgh**

02/13/25 Petersen Events Center, Pittsburgh  
2024-25 Women's Basketball

Officials: Denise Brooks, Jeffrey Smith, Kevin Sparrock

**Notre Dame**

No	Name	Mins		Score		Points Diff		Points per Min		Assists		Rebounds		Steals		Turnovers	
		On	Off	On	Off	On	Off	On	Off	On	Off	On	Off	On	Off	On	Off
3	Hannah Hidalgo	31:16	08:44	68 - 51	20 - 6	17	14	2.17	2.29	16	3	27	12	11	3	12	4
5	Olivia Miles	34:37	05:23	79 - 46	9 - 11	33	-2	2.28	1.67	15	4	35	4	13	1	15	1
8	Cassandra Prosper	20:47	19:13	46 - 33	42 - 24	13	18	2.21	2.19	10	9	20	19	8	6	8	8
11	Sonia Citron	32:33	07:27	74 - 44	14 - 13	30	1	2.27	1.88	17	2	30	9	10	4	11	5
13	Kate Koval	10:14	29:46	18 - 13	70 - 44	5	26	1.76	2.35	2	17	13	26	7	7	9	7
20	Liatu King	28:56	11:04	64 - 41	24 - 16	23	8	2.21	2.17	16	3	27	12	8	6	10	6
21	Maddy Westbeld	14:24	25:36	28 - 21	60 - 36	7	24	1.94	2.34	7	12	14	25	4	10	4	12
25	Sarah Cernugel	02:49	37:11	3 - 0	85 - 57	3	28	1.07	2.29	0	19	6	33	0	14	2	14
32	Liza Karlen	24:24	15:36	60 - 36	28 - 21	24	7	2.46	1.79	12	7	23	16	9	5	9	7

**Pittsburgh**

No	Name	Mins		Score		Points Diff		Points per Min		Assists		Rebounds		Steals		Turnovers	
		On	Off	On	Off	On	Off	On	Off	On	Off	On	Off	On	Off	On	Off
0	Brooklynn Miles	27:50	12:10	36 - 65	21 - 23	-29	-2	1.29	1.73	8	4	25	8	5	6	16	5
1	Aaryn Battle	13:14	26:46	23 - 29	34 - 59	-6	-25	1.74	1.27	4	8	8	25	6	5	6	15
3	MaKayla Elmore	34:04	05:56	57 - 79	0 - 9	-22	-9	1.67	0.00	12	0	28	5	7	4	19	2
11	Marley Washenitz	35:21	04:39	42 - 80	15 - 8	-38	7	1.19	3.23	9	3	29	4	9	2	18	3
14	Raeven Boswell	06:07	33:53	15 - 11	42 - 77	4	-35	2.45	1.24	3	9	5	28	3	8	3	18
15	Khadija Faye	35:43	04:17	52 - 75	5 - 13	-23	-8	1.46	1.17	12	0	30	3	10	1	18	3
22	Audrey Biggs	08:45	31:15	5 - 19	52 - 69	-14	-17	0.57	1.66	0	12	7	26	4	7	5	16
23	Mikayla Johnson	38:56	01:04	55 - 82	2 - 6	-27	-4	1.41	1.88	12	0	33	0	11	0	20	1

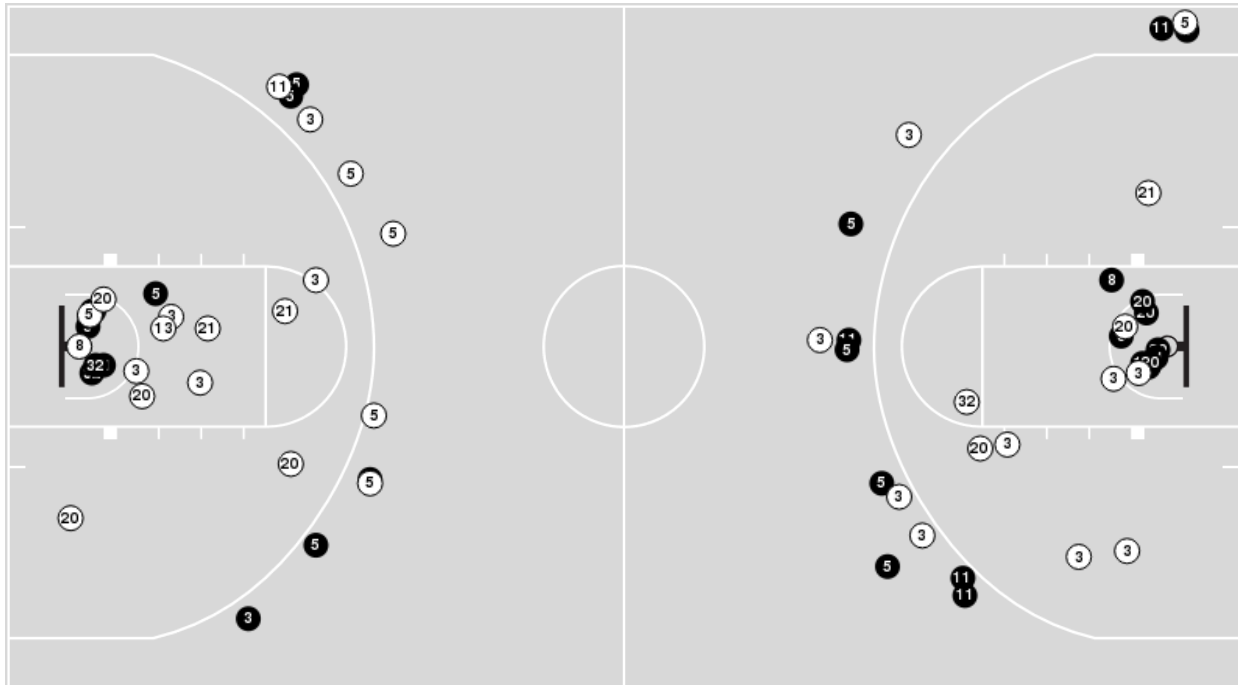


**Officials:** Denise Brooks, Jeffrey Smith, Kevin Sparrock

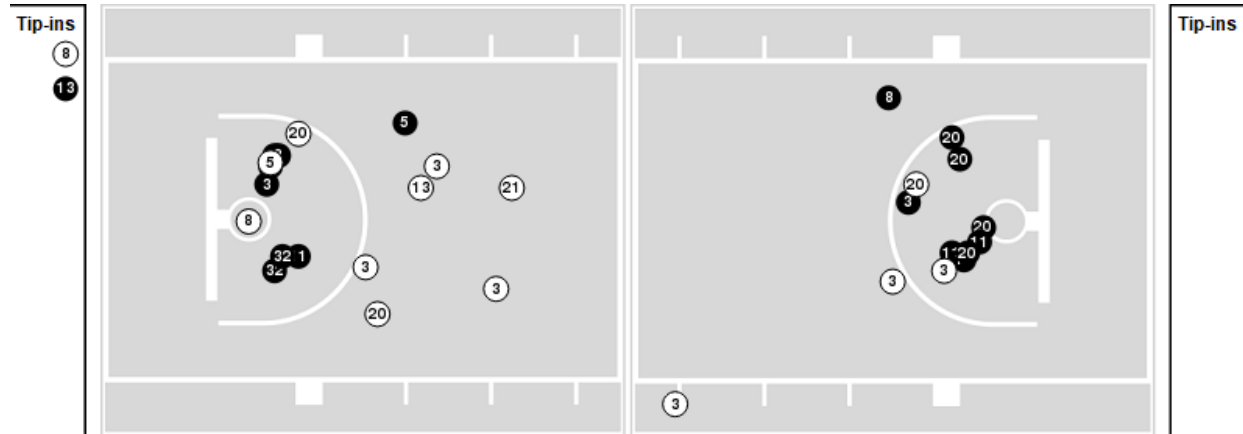
Players => 2, 3, 5, 8, 10, 11, 13, 14, 15, 20, 21, 22, 25, 32FG Types=>AllResults=>All

**Notre Dame**

**All Field Goals**



**Blow Up Chart**



**N** Made    **M** Missed    N - Player Number

Notre Dame	M/A	%
Field Goals	32/65	49
2 Points	18/40	45
3 Points	14/25	56
Free Throws	10/14	71

Notre Dame	M/A	%
Points in the Paint	36 (18 / 30)	60
Fast Break Points	26 (11/11)	100
Second Chance Points	8 (5/11)	45
Effective FG%	60	

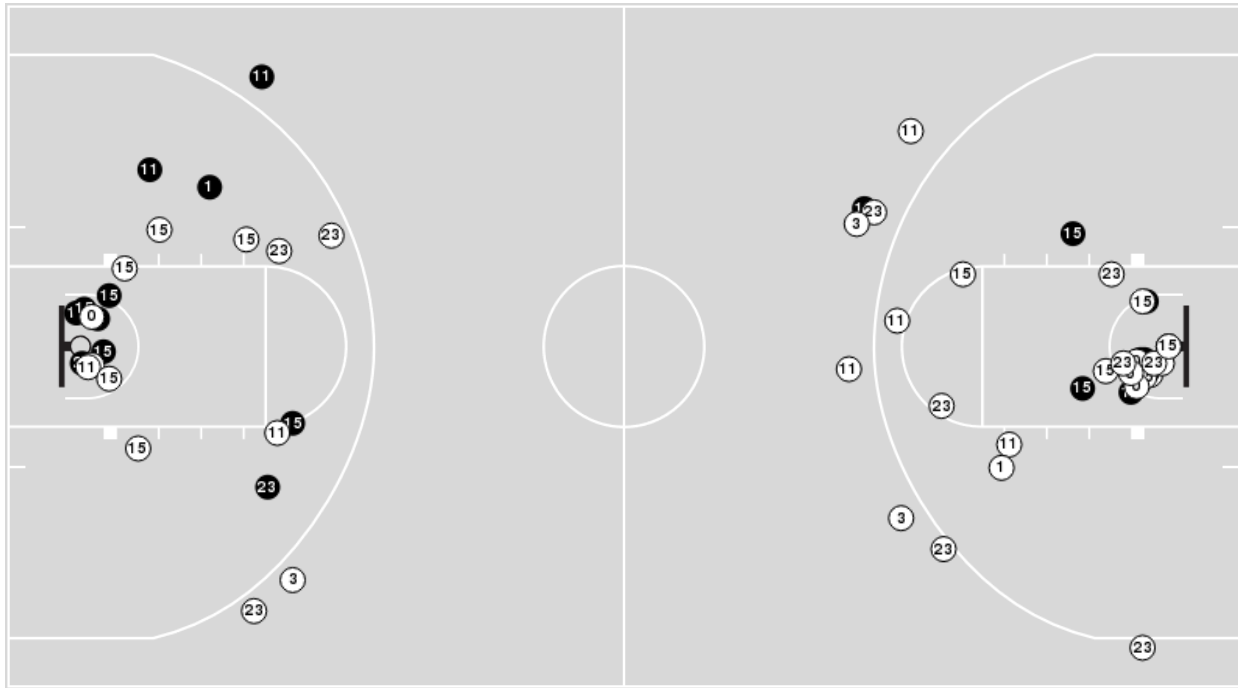


**Officials:** Denise Brooks, Jeffrey Smith, Kevin Sparrock

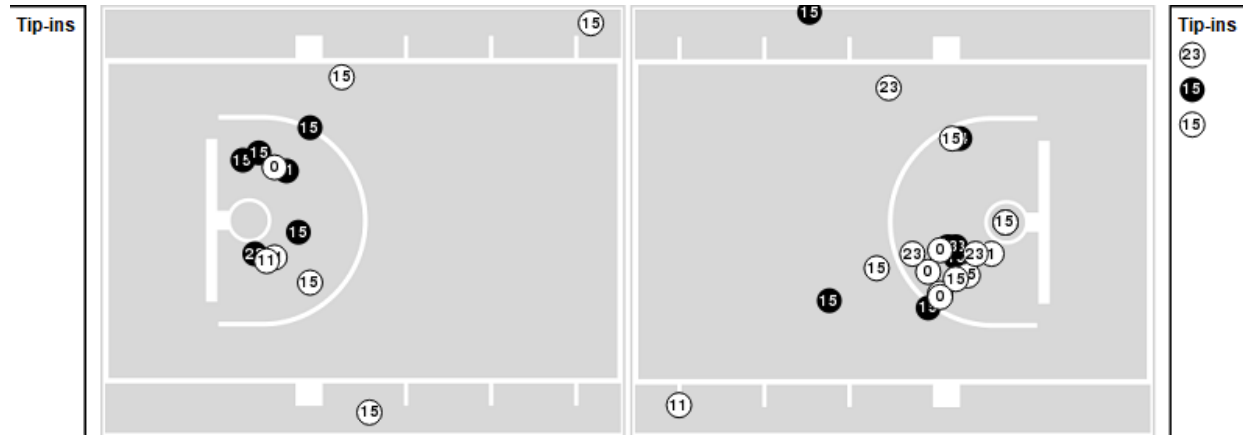
Players => 0, 1, 2, 3, 5, 10, 11, 13, 14, 15, 20, 22, 23 FG Types=>All Results=>All

## Pittsburgh

### All Field Goals



### Blow Up Chart



● Made ○ Missed N - Player Number

Pittsburgh	M/A	%
Field Goals	20/59	34
2 Points	18/48	38
3 Points	2/11	18
Free Throws	15/17	88

Pittsburgh	M/A	%
Points in the Paint	26 (13 / 32)	41
Fast Break Points	8 (5/5)	100
Second Chance Points	2 (1/6)	17
Effective FG%	36	





**Notre Dame at Pittsburgh**

02/13/25 Petersen Events Center, Pittsburgh  
2024-25 Women's Basketball

Officials: Denise Brooks, Jeffrey Smith, Kevin Sparrock

**Notre Dame**

Lineup	Quarter On	Time On	Quarter Off	Time Off	Time on Court	Score	Score Diff	Reb	Stl	Tov	Ass	PPP
3- Hidalgo H/ 5- Miles O/ 11- Citron S/ 20- King L/ 21- Westbeld M/	1	10:00	1	05:36	04:24	8-6	2	3	1	1	2	1.0000
3- Hidalgo H/ 5- Miles O/ 11- Citron S/ 20- King L/ 32- Karlen L/	1	05:36	1	05:10	00:26	5-2	3	0	0	0	0	2.6596
3- Hidalgo H/ 5- Miles O/ 8- Prosper C/ 20- King L/ 32- Karlen L/	1	05:10	1	04:30	00:40	2-2	0	0	0	0	1	2.0000
3- Hidalgo H/ 5- Miles O/ 8- Prosper C/ 13- Koval K/ 32- Karlen L/	1	04:30	1	03:41	00:49	0-0	0	0	1	1	0	0.0000
3- Hidalgo H/ 5- Miles O/ 11- Citron S/ 13- Koval K/ 32- Karlen L/	1	03:41	1	02:42	00:59	2-2	0	0	0	0	0	2.0000
3- Hidalgo H/ 5- Miles O/ 11- Citron S/ 20- King L/ 21- Westbeld M/	1	02:42	1	02:16	00:26	2-0	2	1	0	0	0	2.0000
3- Hidalgo H/ 5- Miles O/ 11- Citron S/ 20- King L/ 32- Karlen L/	1	02:16	1	01:33	00:43	0-5	-5	0	0	1	0	0.0000
3- Hidalgo H/ 8- Prosper C/ 11- Citron S/ 20- King L/ 32- Karlen L/	1	01:33	2	10:00	01:33	3-4	-1	1	1	0	1	1.0417
5- Miles O/ 8- Prosper C/ 11- Citron S/ 20- King L/ 32- Karlen L/	2	10:00	2	06:50	03:10	11-2	9	4	1	1	2	1.5714
3- Hidalgo H/ 5- Miles O/ 11- Citron S/ 13- Koval K/ 20- King L/	2	06:50	2	05:38	01:12	0-0	0	2	1	3	0	0.0000
3- Hidalgo H/ 5- Miles O/ 11- Citron S/ 20- King L/ 32- Karlen L/	2	05:38	2	02:02	03:36	10-7	3	3	1	0	2	2.0000
3- Hidalgo H/ 5- Miles O/ 8- Prosper C/ 11- Citron S/ 32- Karlen L/	2	02:02	2	00:24	01:37	6-3	3	1	0	0	1	1.5464
3- Hidalgo H/ 5- Miles O/ 8- Prosper C/ 11- Citron S/ 21- Westbeld M/	2	00:24	3	10:00	00:24	0-0	0	0	0	0	0	0.0000
3- Hidalgo H/ 5- Miles O/ 11- Citron S/ 20- King L/ 21- Westbeld M/	3	10:00	3	09:21	00:39	0-0	0	0	0	0	0	0.0000
3- Hidalgo H/ 5- Miles O/ 11- Citron S/ 20- King L/ 32- Karlen L/	3	09:21	3	08:58	00:23	0-0	0	1	0	0	0	0.0000
3- Hidalgo H/ 5- Miles O/ 11- Citron S/ 20- King L/ 21- Westbeld M/	3	08:58	3	07:04	01:54	3-2	1	3	0	0	1	1.0000
3- Hidalgo H/ 5- Miles O/ 11- Citron S/ 20- King L/ 32- Karlen L/	3	07:04	3	05:55	01:09	3-0	3	1	0	1	1	1.5000
3- Hidalgo H/ 5- Miles O/ 11- Citron S/ 13- Koval K/ 32- Karlen L/	3	05:55	3	04:39	01:16	4-0	4	2	2	1	1	1.3333
3- Hidalgo H/ 5- Miles O/ 8- Prosper C/ 13- Koval K/ 32- Karlen L/	3	04:39	3	03:54	00:45	2-4	-2	0	1	1	0	0.6944
3- Hidalgo H/ 5- Miles O/ 8- Prosper C/ 13- Koval K/ 21- Westbeld M/	3	03:54	3	02:45	01:09	2-7	-5	2	0	1	0	0.6667
5- Miles O/ 8- Prosper C/ 11- Citron S/ 20- King L/ 21- Westbeld M/	3	02:45	4	10:00	02:45	6-4	2	2	2	1	1	1.2295
3- Hidalgo H/ 5- Miles O/ 11- Citron S/ 20- King L/ 21- Westbeld M/	4	10:00	4	07:54	02:06	5-0	5	3	1	1	2	1.0000
3- Hidalgo H/ 8- Prosper C/ 11- Citron S/ 20- King L/ 21- Westbeld M/	4	07:54	4	07:17	00:37	2-2	0	0	0	0	1	2.0000
3- Hidalgo H/ 8- Prosper C/ 11- Citron S/ 20- King L/ 32- Karlen L/	4	07:17	4	04:04	03:13	4-5	-1	3	0	1	2	0.8000
3- Hidalgo H/ 5- Miles O/ 8- Prosper C/ 13- Koval K/ 32- Karlen L/	4	04:04	4	02:49	01:15	5-0	5	1	2	0	1	1.7361
5- Miles O/ 8- Prosper C/ 13- Koval K/ 25- Cernugel S/ 32- Karlen L/	4	02:49	4	00:00	02:49	3-0	3	6	0	2	0	0.5102



**Notre Dame at Pittsburgh**

02/13/25 Petersen Events Center, Pittsburgh  
2024-25 Women's Basketball

Officials: Denise Brooks, Jeffrey Smith, Kevin Sparrock

**Pittsburgh**

Lineup	Quarter On	Time On	Quarter Off	Time Off	Time on Court	Score	Score Diff	Reb	Stl	Tov	Ass	PPP
0- Miles B/ 3- Elmore M/ 11- Washenitz M/ 15- Faye K/ 23- Johnson M/	1	10:00	2	10:00	10:00	21-22	-1	8	3	7	5	1.0458
0- Miles B/ 1- Battle A/ 3- Elmore M/ 11- Washenitz M/ 22- Biggs A/	2	10:00	2	08:56	01:04	2-6	-4	0	0	1	0	1.0000
0- Miles B/ 3- Elmore M/ 11- Washenitz M/ 15- Faye K/ 23- Johnson M/	2	08:56	2	06:50	02:06	0-5	-5	2	0	0	0	0.0000
1- Battle A/ 11- Washenitz M/ 15- Faye K/ 22- Biggs A/ 23- Johnson M/	2	06:50	2	05:38	01:12	0-0	0	0	2	1	0	0.0000
1- Battle A/ 3- Elmore M/ 11- Washenitz M/ 15- Faye K/ 23- Johnson M/	2	05:38	2	04:04	01:34	5-5	0	0	0	0	1	2.6596
0- Miles B/ 3- Elmore M/ 11- Washenitz M/ 15- Faye K/ 23- Johnson M/	2	04:04	2	00:58	03:05	4-11	-7	2	0	2	2	0.5714
1- Battle A/ 3- Elmore M/ 11- Washenitz M/ 15- Faye K/ 23- Johnson M/	2	00:58	3	10:00	00:58	1-0	1	1	0	0	0	1.1364
0- Miles B/ 3- Elmore M/ 11- Washenitz M/ 15- Faye K/ 23- Johnson M/	3	10:00	3	07:04	02:56	2-3	-1	4	0	1	0	0.4000
0- Miles B/ 11- Washenitz M/ 15- Faye K/ 22- Biggs A/ 23- Johnson M/	3	07:04	3	05:55	01:09	0-3	-3	0	1	0	0	0.0000
0- Miles B/ 3- Elmore M/ 11- Washenitz M/ 15- Faye K/ 23- Johnson M/	3	05:55	3	04:52	01:03	0-4	-4	1	1	2	0	0.0000
1- Battle A/ 3- Elmore M/ 11- Washenitz M/ 15- Faye K/ 23- Johnson M/	3	04:52	3	04:39	00:13	0-2	-2	0	0	0	0	0.0000
1- Battle A/ 3- Elmore M/ 14- Boswell R/ 15- Faye K/ 23- Johnson M/	3	04:39	3	02:45	01:54	11-2	9	2	1	1	3	1.7081
1- Battle A/ 3- Elmore M/ 14- Boswell R/ 22- Biggs A/ 23- Johnson M/	3	02:45	3	01:29	01:16	3-2	1	1	0	1	0	1.2931
1- Battle A/ 3- Elmore M/ 14- Boswell R/ 15- Faye K/ 23- Johnson M/	3	01:29	4	10:00	01:29	1-4	-3	1	1	1	0	0.3472
1- Battle A/ 3- Elmore M/ 11- Washenitz M/ 15- Faye K/ 23- Johnson M/	4	10:00	4	07:54	02:06	0-5	-5	2	1	1	0	0.0000
0- Miles B/ 3- Elmore M/ 11- Washenitz M/ 15- Faye K/ 23- Johnson M/	4	07:54	4	04:04	03:50	7-6	1	3	0	1	1	1.0000
0- Miles B/ 3- Elmore M/ 11- Washenitz M/ 22- Biggs A/ 23- Johnson M/	4	04:04	4	03:35	00:29	0-2	-2	1	0	1	0	0.0000
0- Miles B/ 11- Washenitz M/ 15- Faye K/ 22- Biggs A/ 23- Johnson M/	4	03:35	4	01:28	02:07	0-3	-3	4	0	1	0	0.0000
1- Battle A/ 11- Washenitz M/ 14- Boswell R/ 22- Biggs A/ 23- Johnson M/	4	01:28	4	00:00	01:28	0-3	-3	1	1	0	0	0.0000



**Notre Dame at Pittsburgh**

02/13/25 Petersen Events Center, Pittsburgh  
2024-25 Women's Basketball

Game Time: 8:00 PM

Game Duration: 1:51

Attendance: 1,774

Officials: Denise Brooks, Jeffrey Smith, Kevin Sparrock

**Notre Dame**

Lineup	Time	Score	Score Diff	Pts/Min	Reb	Stl	Tov	Ass	PPP
3- Hidalgo H/ 5- Miles O/ 11- Citron S/ 20- King L/ 21- Westbeld M/	09:29	18-8	10	1.8981	10	2	2	5	1.0000
3- Hidalgo H/ 5- Miles O/ 11- Citron S/ 20- King L/ 32- Karlen L/	06:17	18-14	4	2.8647	5	1	2	3	1.8219
3- Hidalgo H/ 8- Prosper C/ 11- Citron S/ 20- King L/ 32- Karlen L/	04:46	7-9	-2	1.4685	4	1	1	3	0.8883
5- Miles O/ 8- Prosper C/ 11- Citron S/ 20- King L/ 32- Karlen L/	03:10	11-2	9	3.4737	4	1	1	2	1.5714
3- Hidalgo H/ 5- Miles O/ 8- Prosper C/ 13- Koval K/ 32- Karlen L/	02:49	7-4	3	2.4852	1	4	2	1	0.9021
5- Miles O/ 8- Prosper C/ 13- Koval K/ 25- Cernugel S/ 32- Karlen L/	02:49	3-0	3	1.0651	6	0	2	0	0.5102
5- Miles O/ 8- Prosper C/ 11- Citron S/ 20- King L/ 21- Westbeld M/	02:45	6-4	2	2.1818	2	2	1	1	1.2295
3- Hidalgo H/ 5- Miles O/ 11- Citron S/ 13- Koval K/ 32- Karlen L/	02:15	6-2	4	2.6667	2	2	1	1	1.5000
3- Hidalgo H/ 5- Miles O/ 8- Prosper C/ 11- Citron S/ 32- Karlen L/	01:37	6-3	3	3.6772	1	0	0	1	1.5464
3- Hidalgo H/ 5- Miles O/ 11- Citron S/ 13- Koval K/ 20- King L/	01:12	0-0	0	0.0000	2	1	3	0	0.0000
3- Hidalgo H/ 5- Miles O/ 8- Prosper C/ 13- Koval K/ 21- Westbeld M/	01:09	2-7	-5	1.7391	2	0	1	0	0.6667
3- Hidalgo H/ 5- Miles O/ 8- Prosper C/ 20- King L/ 32- Karlen L/	00:40	2-2	0	3.0000	0	0	0	1	2.0000
3- Hidalgo H/ 8- Prosper C/ 11- Citron S/ 20- King L/ 21- Westbeld M/	00:37	2-2	0	3.2432	0	0	0	1	2.0000
3- Hidalgo H/ 5- Miles O/ 8- Prosper C/ 11- Citron S/ 21- Westbeld M/	00:24	0-0	0	0.0000	0	0	0	0	0.0000



### Notre Dame at Pittsburgh

02/13/25 Petersen Events Center, Pittsburgh  
2024-25 Women's Basketball

Officials: Denise Brooks, Jeffrey Smith, Kevin Sparrock

## Pittsburgh

Lineup	Time	Score	Score Diff	Pts/Min	Reb	Stl	Tov	Ass	PPP
0- Miles B/ 3- Elmore M/ 11- Washenitz M/ 15- Faye K/ 23- Johnson M/	23:00	34-51	-17	1.4775	20	4	13	8	0.7222
1- Battle A/ 3- Elmore M/ 11- Washenitz M/ 15- Faye K/ 23- Johnson M/	04:51	6-12	-6	1.2358	3	1	1	1	0.8876
1- Battle A/ 3- Elmore M/ 14- Boswell R/ 15- Faye K/ 23- Johnson M/	03:23	12-6	6	3.5468	3	2	2	3	1.2876
0- Miles B/ 11- Washenitz M/ 15- Faye K/ 22- Biggs A/ 23- Johnson M/	03:16	0-6	-6	0.0000	4	1	1	0	0.0000
1- Battle A/ 11- Washenitz M/ 14- Boswell R/ 22- Biggs A/ 23- Johnson M/	01:28	0-3	-3	0.0000	1	1	0	0	0.0000
1- Battle A/ 3- Elmore M/ 14- Boswell R/ 22- Biggs A/ 23- Johnson M/	01:16	3-2	1	2.3684	1	0	1	0	1.2931
1- Battle A/ 11- Washenitz M/ 15- Faye K/ 22- Biggs A/ 23- Johnson M/	01:12	0-0	0	0.0000	0	2	1	0	0.0000
0- Miles B/ 1- Battle A/ 3- Elmore M/ 11- Washenitz M/ 22- Biggs A/	01:04	2-6	-4	1.8750	0	0	1	0	1.0000
0- Miles B/ 3- Elmore M/ 11- Washenitz M/ 22- Biggs A/ 23- Johnson M/	00:29	0-2	-2	0.0000	1	0	1	0	0.0000