

2024-25 SCHEDULE/RESULTS

Date	Opponent	Time/Result
NOVEMBER		
Mon. 4	vs. #5/#6 UCLA [^] (ESPN)	L, 59-66
Fri. 8	Southern Indiana (ACCNX)	W, 75-51
Tues. 12	at UT Martin (ESPN+)	W, 86-64
Sat. 16	at #20/#19 Kentucky (SECN+)	L, 61-71 (OT)
Thurs. 21	Morehead State (ACCNX)	W, 107-70
Sun. 24	vs. South Florida% (NBC Sports FAST)	W, 64-60
Sat. 30	at Colorado (ESPN+)	W, 79-71
DECEMBER		
Wed. 4	#11 Oklahoma[^] (ESPN2)	L, 72-78
Sat. 7	vs. #2 UConn\$ (FOX)	L, 52-85
Thurs. 12	Grambling State (ACCNX)	W, 96-57
Sun. 15	#22/#20 NC State@* (ABC)	L, 42-72
Sat. 21	at Memphis (ESPN)	W, 87-88
Sun. 29	at Boston College* (ACCN)	W, 86-73
JANUARY		
Thur. 2	Miami* (ACCNX)	W, 74-56
Sun. 5	at Wake Forest* (ACCN)	W, 81-76 (OT)
Thur. 9	at Pitt* (ACCNX)	W, 65-56
Sun. 12	#13 Georgia Tech* (ACCN)	W, 69-60
Thurs. 16	Syracuse* (ACCNX)	W, 72-62
Sun. 19	at Virginia Tech* (ACCN)	L, 65-70
Sun. 26	at Virginia* (CW)	W, 68-65
Thurs. 30	at SMU* (ACCN)	W, 80-75
FEBRUARY		
Sun. 2	#3 Notre Dame* (ESPN2)	12 p.m.
Thurs. 6	#19/#18 Cal* (ACCN)	8 p.m.
Sun. 9	Stanford* (ESPN2)	12 p.m.
Thurs. 13	at #25/#24 Florida State* (ACCNX)	6 p.m.
Thurs. 20	at #10 Duke* (ESPN2)	7 p.m.
Sun. 23	#15 North Carolina* (ESPN)	2 p.m.
Thurs. 27	Clemson* (ACCN)	6 p.m.
MARCH		
Sun. 2	at #3 Notre Dame* (ESPN)	12 p.m.
Wed-Sun. 5-9	vs. ACC Tournament (ACCN/ESPN)	TBA

Home games are in **bold** | All Times Eastern

* = ACC

[^] = Aflac OUI-Play (Paris, France)

% = WBCA State Farm Showcase (Orlando, Fla.)

= SEC/ACC Challenge

\$ = Women's Champions Classic (Brooklyn, N.Y.)

@ = Jimmy V Women's Classic (Louisville, Ky.)

QUICK FACTS

Location	Louisville, Ky.
Founded / Enrollment	1798 / 22,298
Nickname / Colors	Cardinals / Red and Black
Conference	Atlantic Coast
Home Court (Capacity)	KFC Yum! Center (22,090)
President	Dr. Kim Schatzel
Vice President for Athletics	Josh Heird
Senior Woman Administrator	Amy Calabrese
Head Coach	Jeff Walz (Northern Kentucky, '95)
Associate Head Coach	Stephanie Norman
Associate Coach	Jhoneshia Pineda
Associate Coach	Shay Robinson
Assistant Coach	Amanda Butler
Director of Operations	Cortnee Walton
Assistant AD/Women's Basketball	Adrienne Johnson
Director of Video Analytics/Graphic Design	LaMont Russell
All-Time Record	1,026-531 (50th yr.)
All-Time NCAA Tournament Record	44-26 (26 Appearances)
SID - Matt Paras	c: (401) 215-5656
	email: Paras@GoCards.com
Athletics Department	(502) 852-5732
Basketball Office	(502) 852-8355
Sports Information Office	(502) 852-6581

LOUISVILLE

2024-25 WOMEN'S BASKETBALL



Louisville Cardinals vs. #3 Notre Dame Fighting Irish

Game 22 • Sunday, February 2 • 12 p.m. ET • ESPN2 • 93.9-FM The Ville • Louisville, Ky. • KFC Yum! Center

LOUISVILLE

Record: 15-6, 8-2 ACC
 NET: 41 SOS: 15
 Last Game: W, 80-75 at SMU
 Current Streak: W2
 Scoring Margin: +6.4
 Head Coach: Jeff Walz
 Record at UL: 480-141 (18th year)
 International Record: 19-1 (.950)
 Career Record: 499-142 (.778)
 Leading Scorer: Tajianna Roberts (13.0)
 Leading Rebounder: Olivia Cochran (6.5)
 Assists Leader: Ja'Leah Williams (4.0)
 Blocks Leader: Eseosa Imafidon (0.8)
 Steals Leader: Tajianna Roberts (1.9)

NOTRE DAME

Record: 18-2, 9-0 ACC
 NET: 6 SOS: 26
 Last Game: W, 77-61 at Virginia Tech
 Current Streak: W13
 Scoring Margin: +25.3
 Head Coach: Niele Ivey
 Record at ND: 107-34 (Fifth season)
 Career Record: same
 Leading Scorer: Hannah Hidalgo (25.6)
 Leading Rebounder: Liatu King (10.8)
 Assists Leader: Olivia Miles (6.8)
 Blocks Leader: Kate Koval (2.3)
 Steals Leader: Hannah Hidalgo (4.1)

FAST BREAK

■ Louisville has one of the toughest schedules among ACC teams and in the nation this season. Heading into Sunday's game against Notre Dame, the Cardinals have the 15th toughest schedule in the NCAA, which ranks third in the ACC. Looking at their remaining schedule, the Cardinals rank 13th nationally, which is the toughest remaining schedule in the ACC. The second toughest remaining schedule in the league is Miami, which ranks 21st overall.

■ Louisville has a grueling remaining schedule as the calendar flips to February. Six of the eight remaining games are against teams that are ranked in the Top 25. Three of those six games are against teams that are ranked in the Top 10. Five of the eight games will be at home as the Cardinals have had just eight home games so far this season. The eight home games are the fewest of any ACC team and tied for the fewest among teams ranked in the Top 50 of the NET Rankings.

■ Senior guard Jayda Curry has been lights out at the free throw line this season. She leads the ACC and ranks third nationally with a 95.5 free throw percentage on the season. In her 17 games this season, she is 42-for-44 from the free throw line. In ACC games, Curry is 26-for-27 from the line and leads the league with a 96.3 free throw percentage. The Louisville program record for free throw percentage in a single season is 92.1 (116-126) by Kristin Mattox during the 1995-96 season.

■ Junior forward Nyla Harris has been the most consistent shooter for the Cardinals this season. She leads the team with a 60.8 field goal percentage (90-for-148) this season and has an even better mark in ACC play. In conference games, Harris is shooting 64.9 percent (50-for-77) from the floor. That mark leads the league in conference games this season and is significantly higher than the second-best mark in conference play. Rose Micheaux is second in ACC play with a 54.0 field goal percentage (54-for-100).

■ Head coach Jeff Walz (480-141) is the winningest coach in program history; directing the Cards to 15 NCAA Tournament appearances, including 12 Sweet 16's, eight Elite Eight's, four trips to the Final Four (2009, 2013, 2018, 2022) and two appearances in the national title game (2009, 2013). Prior to his arrival, the Cardinals had never reached a Sweet 16 and only had four tournament wins in 11 appearances. Walz has averaged 27.4 wins per season and has guided the Cardinals to 14-straight 20-win seasons, the fifth longest active streak in the country. Before Walz took over in 2007-08, the program only had 10 20-win seasons in its entire history.

Sports Information Office // University of Louisville // Louisville, KY 40292 // GoCards.com
 Phone: (502) 852-3085 // Fax: (502) 852-7401 // email: Paras@GoCards.com // Twitter: @LouisvilleWBB

PROJECTED STARTERS (based off last game)



12

Ja'Leah
WILLIAMS

PPG	RPG	APG	MPG
6.5	4.3	4.0	24.1



30

Jayda
CURRY

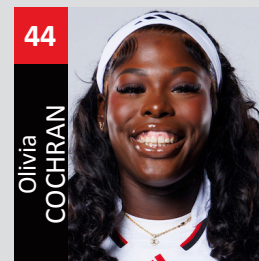
PPG	RPG	APG	MPG
11.9	2.0	3.1	26.8



22

Tajianna
ROBERTS

PPG	RPG	APG	MPG
13.0	3.0	2.4	30.0



44

Olivia
COCHRAN

PPG	RPG	APG	MPG
10.1	6.5	1.4	25.8



2

Nyla
HARRIS

PPG	RPG	APG	MPG
10.2	5.5	0.7	25.6

2024-25 Louisville Cardinals

No.	Name	Pos.	Ht.	Yr.	Hometown	PPG	RPG	APG	Notes
0	Izela Arenas	G	5-9	Fr.	Porter Ranch, Calif.	4.4	1.3	0.8	Tallied 11 points in road win over SMU
1	Imari Berry	G	5-10	Fr.	Clarksville, Tenn.	5.5	2.4	1.0	Scored team-best 21 points against Morehead State
2	Nyla Harris	F	6-2	Jr.	Orlando, Fla.	10.2	5.5	0.7	Leads ACC with 64.9 FG % in conference games
4	Mackeny Randolph	F	6-0	Fr.	Los Angeles, Calif.	3.2	1.6	1.0	Scored season-best 9 points against Memphis
5	Rebekah Graves	G	5-6	Fr.	Keller, Texas	-	-	-	Will miss season due to injury
9	Anaya Hardy	F	6-3	Fr.	Detroit, Mich.	1.1	0.6	0.0	Made her collegiate debut against USI
10	Eseosa Imafidon	C	6-5	R-Fr.	Benin-City, Nigeria	0.8	1.8	0.2	Had 6 rebounds and 3 blocks against Morehead State
11	Elif Istanbuluoglu	F	6-3	So.	Istanbul, Türkiye	3.4	2.0	0.5	Scored 9 points in win over Syracuse
12	Ja'Leah Williams	G	5-9	Sr.	Pompano Beach, Fla.	6.5	4.3	4.0	Tallied a double-double (11 pts., 10 rebs.) against SU
13	Merissah Russell	G	5-11	Gr.	Ottawa, Canada	5.2	2.8	1.6	Scored career-best 14 points against #11 Oklahoma
15	Isla Juffermans	F	6-4	Fr.	Coffs Harbour, Australia	2.8	2.0	0.3	Scored 11 points against Morehead State
21	Reagan Bender	G	5-10	Fr.	Louisville, Ky.	1.4	0.4	0.2	Tallied a season-high 7 points against Grambling State
22	Tajjanna Roberts	G	5-10	Fr.	San Diego, Calif.	13.0	3.0	2.4	3x ACC Rookie of the Week
30	Jayda Curry	G	5-6	Sr.	Corona, Calif.	11.9	2.0	3.1	Leads ACC and 3rd nationally with 95.5 FT %
44	Olivia Cochran	F	6-3	Gr.	Columbus, Ga.	10.1	6.5	1.4	Tallied a double-double (10 pts., 11 rebs.) against Virginia

Pronunciation Guide:

Izela (EE-sell-uh), Imari (uh-MAR-ə), Anaya (uh-NYE-uh), Eseosa (Sosa) Imafidon (e-MAH-fee-don), Elif (Ay-lif) Istanbuluoglu (ee-stahn-BOO-low-loo), Isla (EYE-luh), Walz (Walls), Jonneshia Pineda (JON-ee-SHA PIN-ay-duh)

ABOUT THE FIGHTING IRISH

Notre Dame comes into Sunday's matchup with an 18-2 overall record and are 9-0 in ACC play this season. The Irish have won 13-straight games heading into Sunday and are ranked No. 3 the AP and Coaches Poll. This will be the first of two regular season meetings between the two teams, as they will square off in South Bend for the regular season finale on March 2. The Irish lead the league and have some of the nation's best marks in a number of categories heading into the weekend. The Irish lead the ACC in assists per game (18.9), blocks per game (6.0), field goal percentage (49.7), rebounds per game (44.7), scoring margin (+25.3), steals per game (11.5), three-point percentage (41.3) and three-point percentage defense (25.8). The Irish lead the nation in three point percentage and rank top-five nationally in field goal percentage. Individually, Hannah Hidalgo and Olivia Miles are two of the best guards in the country. Hidalgo leads the ACC and ranks top-five nationally in steals per game (4.1), she ranks second nationally in points per game (25.3) and is second in the ACC in three point percentage (43.0). Miles leads the nation in triple doubles (3) and leads the ACC in assists per game (6.8). Liatu King is also one of the best rebounders in the league as she is second in the ACC with 10.8 rebounds per game.

■ **Series History** - This will be the 35th meeting between the two schools as they have been conference foes going back to the BIG EAST days. The Cardinals trail the all-time series 14-20 but have seen more success over the past few years. Louisville has won eight of the last 12 matchups dating back to the 2018-19 season. The Cardinals are 6-6 all-time in games played in Louisville but have won five of the last six home matchups dating back to the 2017-18 season.

■ **Last Meeting (Mar. 8, 2024)** - The No. 5 seed Louisville Cardinals (24-9) dropped its quarterfinal matchup to No. 4 seed Notre Dame (24-6), 77-68, Friday afternoon at the ACC Women's Basketball Tournament. Louisville struggled from the floor in the first half and faced a big halftime deficit. The Cardinals fought back in the second half and got the deficit down to three but were unable to come all the way back. Jayda Curry had her best game in a Louisville uniform as she sparked the comeback bid in the second half. She scored a team-best 26 points on 8-for-16 shooting, 3-for-6 from behind the arc and added three rebounds, three assists and two steals. 23 of Curry's 26 points came in the second half as the Cardinals made their comeback bid. Nyla Harris had a team-best 10 rebounds and was one point shy of a double-double with nine points.

APPROACHING MILESTONES

■ **Cochran Approaches 1,000 Career Rebounds** - Olivia Cochran has 974 career rebounds, 26 shy of 1,000.

■ **Cochran Approaches 1,500 Career Points** - Olivia Cochran has 1,472 career points, 28 shy of 1,500.

■ **Cochran is Second in Career Games Played** - Olivia Cochran has 155 career games played and currently is second in program history for the most games played at Louisville. She only trails Mykasa Robinson, who holds the record at 162 games played.

■ **Curry Approaches 1,500 Career Points** - Jayda Curry has 1,408 career points, 92 shy of 1,500.

GAMEDAY INFO

Date: Sunday, February 2

Time: 12 p.m. ET

Site: Louisville, Ky. | KFC Yum! Center (22,090)

TV: ESPN2 (Ryan Ruocco, play-by-play; Rebecca Lobo, analyst; Holly Rowe, reporter)

Radio: 93.9-FM The Ville (Nick Curran, play-by-play; Cortnee Walton, analyst)

Series History: Louisville trails 14-20 (home 6-6, away 5-8, neutral 3-6)

Last Meeting: L, 68-77 (Mar. 8, 2024 at Greensboro, N.C.)

Team Statistics	Cards (15-6)	ND (18-2)
Points per game	73.3	87.0
Scoring margin	+6.4	+25.3
Field goal percentage	.442	.497
3-Point FG-attempts	131-438	158-383
3-Point FG percentage	.299	.413
3-Point FG made per game	6.2	7.9
Free throws-attempts	235-335	249-329
Free throw percentage	.701	.757
FTs made per game	11.2	12.5
Rebounds per game	36.1	44.7
Rebounding margin	+3.2	+11.2
Assists per game	16.0	18.9
Turnovers per game	16.5	15.1
Turnover margin	+3.4	+2.6
Assist/turnover ratio	1.0	1.2
Steals per game	9.6	11.5
Blocks per game	2.4	6.0

A DECADE OF ACC SUCCESS

Since Louisville joined the ACC back in the 2014-15 season, they have been one of the most successful teams in the conference during the regular season and in the NCAA Tournament.

- Since the 2014-15 season, Louisville leads the league with 146 ACC wins and a .820 winning percentage in conference games. They are one of just two schools in the league to have a winning percentage of .800 or better in ACC games during that timeframe.
- Louisville has had five players named ACC Player of the Year, the most by any school during that time span.
- The Cardinals have won 10 or more ACC games every season since they joined the league. They are the only program in the conference to have 10 or more ACC wins in each of the last 10 seasons.
- Louisville has finished in the Top-5 of the league standings every season they have been in the league. They are the only school to finish in the Top-5 in the ACC standings in each of the last 10 seasons.
- The Cardinals have also reached the quarterfinals or farther in each of the last 10 ACC Tournaments, the only school to reach the quarterfinals or farther in each of the last 10 conference tournaments.
- Over the last four NCAA tournaments (2021, 2022, 2023, 2024), Louisville leads the ACC with 10 total wins in the NCAA Tournament.
- In two of those four years (2021, 2022), the Cardinals were the farthest ACC team to advance in the bracket.
- In the past six NCAA tournaments (2018, 2019, 2021, 2022, 2023, 2024), Louisville has the most wins among ACC teams in the NCAA Tournament with 17. The Cardinals reached the Elite Eight or farther in five of the six of those tournaments.
- Overall since the 2014-15 season, Louisville is second in the conference in NCAA Tournament wins (22) and second in years they have been the last ACC team standing in the tournament (2).

ROBERTS IS ROLLING

Freshman Tajiana Roberts wasted no time making an impact early on in her collegiate career.

- Roberts earned the start in her first collegiate game and was one of two freshmen (Mackleny Randolph) in the starting lineup for the season opener.
- She scored a game-high 21 points, hit four three-pointers and did not have any turnovers against #5/#6 UCLA.
- Roberts is the first Louisville freshman to score 20+ points in their debut since the 2020-21 season.
- She followed it up with 11 points, four rebounds and a team-best four assists in the win over Southern Indiana.
- Roberts was named ACC Rookie of the Week following her performance over the opening week of the season.
- Roberts scored in double-figures in each of the next three games against UT Martin (13 points), #20/#19 Kentucky (12 points) and Morehead State (11 points).
- In the win over Colorado, Roberts scored 13 points on 5-for-10 shooting and had a season-high four steals.
- She went on a 5-0 run on her own in the fourth quarter to regain the lead for the Cards. Her run sparked a larger 16-0 run in the fourth quarter as the Cards closed out the win.
- Roberts earned ACC Rookie of the Week honors following her game against the Buffaloes.
- Roberts tallied 10 points, a season-high four assists and four steals in the win over Grambling State.
- She scored a career-best 23 points on 10-for-17 shooting to go with three steals and two assists in the win over Memphis. The 23 points were the most scored by a Louisville player this season.
- Roberts tallied 13 points and tied for the team lead with four assists in the road win over Boston College.
- She scored 14 points and tied a season high with four assists and four rebounds to go with two steals in the win over Miami.
- In the road win over Wake Forest, Roberts scored 17 points (6-for-13 shooting) with three three-pointers and three assists.
- Roberts led the team with 17 points and set a season high with five three-pointers in the win over Pitt and led the team in scoring with 16 in the win over #13 Georgia Tech.

HEAD COACH JEFF WALZ



Head coach **Jeff Walz**, in his 18th season as a head coach, has compiled a 480-141 record as the Cardinals' leader. Walz and the Cardinals boast quite an astounding resumé that includes 12 trips to the NCAA Sweet 16, eight trips to the Elite Eight, four trips to the final four and two trips to the national title game. Overall, he has compiled a 40-15 record in NCAA Tournament games and ranks 10th all-time and fifth among active coaches with a 72.7 NCAA Tournament winning percentage. All of this for a program that had just four NCAA Tournament wins and had never reached a Sweet 16 prior to Walz being named head coach.

Walz is the all-time winningest coach in program history and averages 27.4 victories per season. He directed Louisville to a program-record 36 victories in 2017-18 en route to being named ACC Coach of the Year, 34 victories in 2008-09, 33 wins in 2013-14, 32 wins in 2018-19 and 29 wins in 2021-22.

Walz has been with the Cardinals for 18 seasons and is tied for 17th for the longest active streak at the same school. Among the power conferences, Walz is sixth behind Geno Auriemma (40 years, UConn), Bill Fennelly (30 years, Iowa State), Jose Fernandez (25 years, USF), Brenda Frese (23 years, Maryland) and Jim Flanery (23 years, Creighton).

The Cardinals have reached 20 wins 14 consecutive times and they have won at least 20 games in 16 of Walz's 17 full seasons. The longest run previously was three, achieved twice, and UofL had just 10 20-win seasons in its 32 previous years.

Walz led Louisville to four consecutive Atlantic Coast Conference regular season titles in 2018, 2019, 2020 and 2021, and over that four-year span, the Cardinals went a combined 122-15, which marked the fewest losses and best winning percentage over a four-year period in program history.

From 2016-2021, he coached the ACC Player of the Year in five of six seasons as Myisha Hines-Allen won the award in 2016, Asia Durr in 2018 and 2019, and Dana Evans in 2020 and 2021. He also coached Angel McCoughtry to Big East Player of the Year honors in 2007.

After being hired as the Cardinals' head coach on March 27, 2007, the Bluegrass State native used little time to make a splash. His first year featured the program's first NCAA Sweet 16 and it culminated with Louisville earning the No. 12 ranking in the final ESPN/USA Today Coaches Poll. For his efforts, Walz was named the WBCA Maggie Dixon Rookie Coach of the Year.

Prior to taking the reins at Louisville, Walz spent five seasons at Maryland, including his final season as the associate head coach in 2006-07. The season prior, he helped lead the Terrapins to a school-record 34 wins and the program's first national title.

Walz has four children: daughter Kaeley, son Jacob, and daughters Lola and Lucy. He married the former Lauren Lueders in September of 2012, and the couple resides in Louisville.

No.	Date	Score
1	11/10/07	Louisville 81, Ball State 62
50	2/17/09	Louisville 89, St. John's 60
100	11/22/11	Louisville 78, Austin Peay 60
150	11/11/13	Louisville 100, Quinnipiac 82
200	1/29/15	Louisville 78, Syracuse 58
250	1/15/17	Louisville 63, Miami 59
300	11/6/18	Louisville 102, WKU 80
350	1/23/20	Louisville 71, Virginia 56
400	1/16/22	Louisville 63, Boston College 53
450	12/10/23	Louisville 73, Kentucky 61

Before Walz 1975-2007 (32 seasons)	With Walz 2007-pres (18th season)
Overall Record 547-391 (.583)	Overall Record 480-141 (.773)
NCAAT Record 4-11 (.267)	NCAAT Record 40-15 (.727)
Sweet 16 App. 0	Sweet 16 App. 12
Elite Eight App. 0	Elite Eight App. 8
Final Four App. 0	Final Four App. 4
NCAA Finalist 0	NCAA Finalist 2

- She was named ACC Rookie of the Week for the third time this season following her performances against Pitt and #13 Georgia Tech.
- Scored a team-best 13 points and tied a season high with four assists in the win over Syracuse.
- Set a career high with nine rebounds, tied a career high with four assists and scored 11 points in the road win over Virginia.
- Roberts hit the game-winning bucket with 56 seconds remaining in the road win over SMU. She scored a team-best 22 points and led the team with a career-best five assists. She also tied a career high with four steals in the win.
- She has scored in double figures in a team-best 17 of 21 games this season, the most by any ACC freshman this season.

CURRY IS COOKING

Senior guard Jayda Curry has been an impact player in her second season with the Cardinals after transferring from Cal in the summer of 2023.

- She made her season debut against Morehead State after missing the first four games due to injury.
- Curry scored in double figures in each of her first four games, including a team-best 14 points in the road win over Colorado on Nov. 30.
- In the WBCA Showcase against South Florida, Curry had a season-best six assists to go with 12 points in the win.
- Curry tied a season high with 14 points and tallied five assists in the road win over Memphis on Dec. 21.
- She scored 14 points for the second-straight game as she led the team in the road win over Boston College.
- Curry had her best game of the season against Miami when she scored a season-best 21 points on 6-for-12 shooting and tied a career high with four three-pointers made.
- She scored seven of her 11 points and made back-to-back threes in overtime in the road win over Wake Forest.
- She tied a career high with four made three-pointers and had 12 points in the win over Syracuse.
- Curry set a career high with five three-pointers and tied a career high with a team-best eight assists to go with a team-high 19 points in the road win over Virginia.
- She scored in double figures with 15 points on 5-for-9 shooting and 3-for-5 from behind the arc with four assists in the road win over SMU.
- Curry leads the ACC and ranks third nationally with a 95.5 (42-for-44) free throw shooting percentage. In ACC games, she is 26-for-27 and leads the league with a 96.3 free throw percentage.
- She has scored 10 or more points in 13 of her 17 games this season.

HOW ABOUT HARRIS

Nyla Harris made a big jump in her second season with the Cardinals and is ready to continue the upward trend during her junior season.

- She led the team with 16 points on 6-for-8 shooting in the road win over UT Martin.
- Harris tallied eight points on 4-for-6 shooting and three rebounds in just 10 minutes of action against Morehead State.
- In her return to her hometown, Harris led the Cards with nine rebounds and had eight points on 3-for-3 shooting from the floor in the win over South Florida.
- Harris had a team-best 14 points on 5-for-7 shooting and a team-best four rebounds to go with three steals in the win over Colorado.
- She was one of five players in double figures with 10 points, six rebounds, three steals, two blocks and two assists against No. 11 Oklahoma.
- Harris joined Cochran in the double-double party with 14 points and 10 rebounds against Grambling for her first double-double of the season.
- She tallied 12 points on 5-for-6 shooting to go with five rebounds in the win over Boston College.
- Harris led the team with a season-best 18 points on 8-for-10 shooting with four rebounds and two steals in the road win over Wake Forest.
- She was perfect from the field with 5-for-5 shooting for 11 points and six rebounds in the win over #13 Georgia Tech.
- Recorded her second double-double of the season with 10 points and a season-best 11 rebounds in the win over Syracuse.
- Harris tallied 15 points on 7-for-10 shooting in the road win over Virginia.
- She had another strong effort in the road win over SMU with 14 points on 4-for-5 shooting from the field and 6-for-6 from the line with four rebounds, three steals and two assists.



STANDINGS (JAN. 31)

TEAM	ACC	PCT.	OVERALL
1. #3 Notre Dame	9-0	1.000	18-2
2. #17/#16 NC State	9-1	.900	17-4
3. #10 Duke	8-1	.889	17-4
4. Louisville	8-2	.800	15-6
5. #25/#24 Florida State	7-2	.778	17-4
6. #15 North Carolina	7-3	.700	19-4
7. #19/#18 Cal	6-3	.667	18-4
8. #20/#21 Georgia Tech	5-4	.556	17-4
9. Virginia Tech	5-5	.500	14-7
10. Clemson	4-6	.400	11-10
11. Stanford	3-6	.333	11-9
12. Miami	3-7	.300	13-8
13. Boston College	3-7	.300	12-11
14. Virginia	3-7	.300	11-11
15. Syracuse	2-7	.222	8-12
16. SMU	2-8	.200	10-12
17. Pitt	1-8	.111	9-13
18. Wake Forest	1-9	.100	8-13

ACC RESULTS (Jan. 30)

Louisville 80, SMU 75

#25/#24 Florida State 104, Boston College 80

#17/#16 NC State 90, Wake Forest 83

#3 Notre Dame 77, Virginia Tech 61

Miami 77, Virginia 74

#15 North Carolina 65, #19/#18 Cal 52

Stanford 58, Pitt 46

ACC SCHEDULE (Feb. 2)

#3 Notre Dame vs. Louisville	12 p.m.	ESPN2
Virginia vs. Syracuse	12 p.m.	ACCN
SMU vs. Virginia Tech	2 p.m.	ACCNX
#20/#21 Georgia Tech vs. Miami	2 p.m.	ACCN
Clemson vs. Boston College	2 p.m.	ACCNX
#15 North Carolina vs. Stanford	3 p.m.	ACCNX
Pitt vs. Cal	5 p.m.	ACCNX
Wake Forest vs. #25/#24 Florida State	6 p.m.	ACCN

■ She leads the team with a 60.8 field goal percentage (90-for-148) on the season. In ACC games, Harris leads the league with a 64.9 field goal percentage (50-for-77).

RUNNING IT BACK AGAIN FOR OC

Olivia Cochran is back for her fifth and final collegiate season with the Cardinals for the 2024-25 season.

- Cochran has started every game in each of the last three seasons and has started in 116-straight games for the Cardinals through 21 games in the 24-25 season.
- She has played in 155 career games at Louisville and is second in program history for most career games played.
- She currently ranks third all-time on the career rebound list at Louisville with 974 for her career.
- Cochran scored in double figures in back-to-back games against USI (team-best 15 points) and UT Martin (14 points).
- She led the team with six rebounds and had six points, two steals, an assist and a block against Morehead State.
- Cochran was named WBCA Showcase Most Outstanding Player after she led the Cards with 13 points and nine rebounds in the win over South Florida on Nov. 24.
- She led the Cards with 17 points and nine rebounds against No. 11 Oklahoma.
- Tallied her first double-double of the season with a season-best 18 points and 11 rebounds in the win over Grambling State.
- She picked up her second double-double of the season with 12 points and 13 rebounds in the win over Memphis. The 13 rebounds are the most by a Louisville player in a game this year.
- Cochran scored 13 points on 6-for-9 shooting and led the team with seven rebounds, four assists and three steals in the win over Boston College.
- She tallied 13 points on 6-for-9 shooting and tied a season high with three steals in the win over Miami.
- Cochran tied a career high when she went 9-for-9 from the free throw line and scored in double figures for the fourth-straight game with 13 points to go with a team-best seven rebounds and four assists in the road win over Wake Forest.
- Led the team with 14 points and eight rebounds against Virginia Tech.
- Tallied her team-leading third double-double of the season with 10 points and 11 rebounds in the road win over Virginia.
- She has shot 50 percent or better from the field in 12 of her 20 games this season.

WILLIAMS IS WORKING

Transfer guard Ja'Leah Williams has been stuffing the stat sheet this season for the Cards.

- In the season opener against #5/#6 UCLA, she set a career high with nine assists to go with a team-high four steals, team-high seven rebounds and 11 points.
- The nine assists were the second most by an ACC player in a game over the first week of the season.
- Williams led the team again with four assists to go with six rebounds, four points and two steals in the win over Southern Indiana.
- In the win over UT Martin on Nov. 12, Williams had nine points on 4-for-4 shooting to go with three rebounds, two steals, an assist and a block.
- Against #20/#19 Kentucky, Williams tallied nine points, a team-high six assists and had five rebounds and a block.
- Williams was efficient against Morehead State as she had a game-high eight assists to go with six points in 14 minutes of action.
- She came up clutch with the go-ahead layup in the final minute of the team's win over South Florida on Nov. 24 and led the team with seven assists.
- Williams led the team with four assists to go with six points and two steals and a block against Grambling State.
- She had a team-best seven assists to go with six points on 3-for-3 shooting with three steals and three rebounds in the win over Memphis.
- Williams had a season-best 12 points to go with six rebounds, two assists and two steals in the win over Boston College.
- Facing her former team, Williams led the team with seven assists, seven rebounds and four steals and tallied eight points in the win over the Hurricanes.
- She led the team with seven rebounds and scored in double figures with 13 points to go with three assists and three steals in the win over #13 Georgia Tech.
- Tallied her first career double-double with 11 points and a season-best 10 rebounds

2024-25 NATIONAL RANKINGS

Associated Press (Week 12)		USA Today (Week 12)			
1	UCLA* (31)	20-0	1	UCLA* (30)	20-0
2	South Carolina (1)	19-1	2	South Carolina (1)	20-1
3	Notre Dame*	17-2	3	Notre Dame*	17-2
4	USC	18-1	4	USC	18-1
5	Texas	20-2	5	LSU	21-1
6	UConn*	19-2	6	UConn*	19-2
7	LSU	21-1	7	Texas	18-2
8	Ohio State	19-1	8	Ohio State	19-1
9	TCU	20-2	9	TCU	20-2
10	Duke*	17-4	10	Duke*	17-4
11	Kansas State	19-2	11	Kansas State	19-2
12	Kentucky*	17-2	12	Oklahoma*	16-4
13	Oklahoma*	16-4	13	Kentucky*	17-3
14	Maryland	16-4	14	Maryland	16-4
15	North Carolina*	18-4	15	North Carolina*	18-4
16	Michigan State	17-3	16	NC State*	16-4
17	NC State*	16-4	17	Michigan State	17-3
18	Tennessee	15-4	18	Cal*	18-3
19	Cal*	18-3	19	Tennessee	15-5
20	Georgia Tech*	17-4	20	West Virginia	16-4
21	West Virginia	17-4	21	Georgia Tech*	17-4
22	Alabama	17-4	22	Alabama	17-4
23	Vanderbilt	17-4	23	Vanderbilt	17-4
24	Oklahoma State	17-3	24	Florida State*	16-4
25	Florida State*	16-4	25	Oklahoma State	17-3

* opponent this season

* opponent this season

Others receiving votes: Michigan 30, Nebraska 26, Minnesota 25, Creighton 21, Baylor 12, Utah 11, Mississippi 8, Harvard 7, South Dakota St. 2

Others receiving votes: South Dakota State 34; Baylor 33; Creighton 17; Minnesota 16; Nebraska 15; Utah 8; Louisville 6; Virginia Tech 5; Michigan 5; Richmond 4; George Mason 2; FGCU 2; Norfolk State 1

Louisville in the Polls

Date	AP	USAT
Preseason	17	17
Week 1	18	18
Week 2	25	22
Week 3	24	23
Week 4	22	22
Week 5	RV	RV
Week 6	NR	NR
Week 7	NR	NR
Week 8	NR	NR
Week 9	NR	NR
Week 10	RV	RV
Week 11	NR	RV
Week 12	NR	RV

to go with a team-best seven assists in the win over Syracuse.

- Led the team with four assists to go with 12 points and five rebounds against Virginia Tech.
- Williams has had seven games this season with six or more assists and 11 games this season she has led the team in assists.

IN RARE AIR

Jeff Walz is among a select few coaches in all of college basketball when it comes to making four or more Final Fours.

- In Women's Basketball, he is one of just four active head coaches (Geno Auriemma, Dawn Staley, Kim Mulkey) and one of 11 all-time to make four or more Final Fours.
- Of those 11, Walz is one of nine to have all of his appearances come at the same school.
- Including Men's Basketball, Walz is one of seven active and one of 32 all-time to make four or more Final Fours.
- Of those 32, he is one of 25 to make all of his appearances at the same school.

WALZ IN THE BIG DANCE

Walz boasts a 40-15 record in NCAA Tournament games. He is 10th all-time in winning percentage and fifth among active coaches who have coached in at least 25 tournament games or more. He has directed UofL to a pair of national runner-up finishes (2009, 2013), four Final Fours (2009, 2013, 2018, 2022), eight Elite Eights (2009, 2013, 2014, 2018, 2019, 2021, 2022, 2023), 12 trips to the Sweet 16 and 15 NCAA Tournaments. Walz is one of four active head coaches to make four or more Final Fours.

NCAA Tournament All-Time Winning Percentage (Min. 25 games)			
No.	Coach	Record	Years
1.	Geno Auriemma, UConn	.850 (136-24)	1989-pres
2.	Pat Summitt, Tennessee	.830 (112-23)	1982-2012
3.	Kim Mulkey, Baylor/LSU	.778 (63-18)	2001-pres
4.	Linda Sharp, USC/Texas St.	.760 (19-6)	1982-1997
5.	Leon Barmore, Louisiana Tech	.747 (56-19)	1983-2002
6.	Dawn Staley, Temple, SC	.746 (44-15)	2002-pres.
7.	Vic Schaefer, Miss. St./Texas	.743 (26-9)	1990-pres
8.	Tara VanDerveer, OSU, Stan	.741 (100-35)	1982-2024
9.	Muffet McGraw, Notre Dame	.736 (67-24)	1987-2020
10.	Jeff Walz, Louisville	.727 (40-15)	2008-pres

ONE OF THE BEST IN THE COUNTRY

Louisville has been one of the best teams in the country since the start of the 2017-18 season. The Cardinals have totaled 216 wins and an .818 winning percentage. The wins rank fifth and the winning percentage is sixth in the NCAA during that span. Louisville is just one of nine teams to win 200 games or more over the past eight seasons.

ROAD WARRIORS

Since the start of the 2017-18 season, the Cardinals are 77-19 in true road games. Louisville is tied for third in the NCAA in road wins and fifth in road winning percentage (.802) during that span.

70-PLUS POINTS

The Cardinals are 112-8 in their last 120 games when they have scored 70 points or more, dating back to the 2018-19 season. UofL is 341-31 when surpassing the 70-point plateau under Walz.

50/50

Last season, the Cardinals were 9-0 in games when they shot 50 percent or better from the floor and they are 7-0 this season after they shot 52.6 percent (30-57) from the field in the win over SMU on Jan. 30. Overall, they boast a 159-3 record when shooting 50 percent or better from the field under Walz.

ALLOWING 59 POINTS OR LESS

The Cardinals have great success when allowing 59 points or less in a game over the past few seasons. Louisville has won 49-straight games when allowing 59 points or less in a game after the 65-56 win over Pitt on Jan. 9. The 49-straight wins dates back to the 2020-21 season. Over the past 10 seasons, the Cardinals are 156-4 when allowing 59 points or less in a game.

CARDS ECLIPSE CENTURY MARK IN WIN OVER MOREHEAD STATE

Louisville had an offensive explosion in its 107-70 win over Morehead State on Nov. 21.

- Louisville had all 14 players score in the win, the most players to score in a game this season. It is the first time in the Jeff Walz era that the Cardinals had 14 different players

TOP TEAM EFFORTS UNDER JEFF WALZ

Most points scored in a game: 116 vs. DePaul, 12/4/20 (UofL 116, DePaul 75)

Most field goals made in a game: 49 vs. DePaul, 12/4/20 (UofL 116, DePaul 75)

Most 3-point field goals made in a game: 18 vs. Syracuse, 2/11/12 (UofL 89, SU 62)

Most free throws made in a game: 33 at Kentucky, 12/11/22 (UofL 86, UK 72)

Most free throws attempted in a game: 42 vs. Rutgers, 1/11/09 (UofL 64, RU 59)

Most total rebounds in a game: 68 vs. Loyola-Chicago, 11/9/13 (UofL 101, LC 54)

Most assists in a game: 28 vs. Ball State, 12/17/13 (UofL 105, BSU 67); vs. Chattanooga, 3/18/17 (UL 82, UTC 62)

Most steals in a game: 24 vs. BYU, 3/21/15 (UofL 86, BYU 53)

Most blocked shots in a game: 11 vs. DePaul, 12/4/20 (UofL 116, DePaul 75); vs. TSU, 12/2/18 (UofL 107, TSU 52)

Fewest turnovers in a game: 3 vs. Oregon State, 3/26/18 (UofL 76, OSU 43)

Fewest points allowed in a game: 25 vs. Bellarmine, 11/16/21 (UofL 82, BU 25); vs. Tennessee State, 12/31/12 (UofL 88, TSU 25)

Largest margin of victory: 78 vs. Bellarmine, 11/16/23 (UofL 111, BU 33)

Highest field goal percentage in a game: .678 (40-59) vs. IPFW, 11/29/10 (UofL 100, IPFW 79)

Highest 3-point percentage in a game (min. 8 attempts): .714 (10-14) vs. Rutgers, 3/8/09 (UofL 87, RU 82, 2 OT)

Lowest field goal percentage allowed: .149 (7-47) Bellarmine, 11/16/21 (UofL 82, BU 25)

HONORS

Imari Berry

ACC Newcomer Watch List

Olivia Cochran

WBCA Showcase Most Outstanding Player, 2025 McClain Award Watch List, 2024 All-ACC Second Team, 2023-24 Wooden Award Preseason Top 50 Watch List, 2023-24 Naismith Women's Player of the Year Watch List, 2023-24 Pre-season All-ACC, 2024 McClain Award Watch List, ACC Second Team All-Tournament, 2023 McClain Award Watch List, 2022 McClain Award Watch List, 2020-21 ACC All-Freshman Team

Jayda Curry

2025 Drysdale Award Watch List, 2023-24 Naismith Women's Player of the Year Watch List, ACC Newcomer Watch List, All-Pac-12 Honorable Mention - Coaches (2023), Pac-12 All-Conference - Media (2023), Pac-12 Freshman of the Year - Media (2022), Pac-12 All-Conference - Media (2022), Pac-12 All-Freshman Team - Media (2022), All-Pac-12 Honorable Mention - Coaches (2022), Pac-12 All-Freshman Team - Coaches (2022), Pac-12 Freshman of the Week (Five times)

Nyla Harris

2025 Leslie Award Watch List

Jeff Walz

2021-22 Naismith Coach of the Year Late Season Watch List, 2020-21 Naismith Coach of the Year Semifinalist, 2019-20 Naismith Coach of the Year Semifinalist, 2019 USA Basketball National Coach of the Year, 2018-19 Naismith Coach of the Year Semifinalist, 2017-18 ACC Coach of the Year, 2017-18 Naismith Coach of the Year Semifinalist

Tajianna Roberts

3x ACC Rookie of the Week (1/13, 12/2, 11/11)

Ja'Leah Williams

2022 All-ACC Freshman Team

score in a game.

- The Cardinals scored over 100 points for the first time this season and the 32nd time in program history.
- Louisville tallied 59 points in the first half, the most points scored in a first half since Dec. 5, 2022, when they scored 62 against SIUE.
- The Cardinals were 39-for-62 (62.9 percent) from the field, their highest field goal percentage in a game since 2022 against SIUE when they shot 66.2 percent (43-for-65).
- Louisville lit it up from distance as they were 16-for-27 (59.3 percent) from behind the arc. It was the most three-pointers made in a single game since Nov. 6, 2018, when they hit 16 in the season opening win on the road against Western Kentucky.
- The Cards had 25 assists in the win, the most in a single game since they had 25 against Syracuse on January 29, 2023.

ROSTER BREAKDOWN

Louisville returns five players that played for last year’s team and brings in nine newcomers to the 2024-25 squad.

■ **Returnees** - The Cardinals returned two starters from last year’s team in graduate forward Olivia Cochran and junior forward Nyla Harris. Both Harris and Cochran played in all 34 games last season and led the team with 6.6 rebounds per game. Cochran eclipsed the 1,000-career point plateau last season and was second on the team in points with 10.8 points per game. She also led the team with 0.6 blocks per game and 1.4 steals per game. Harris led the team with six double doubles last season and was one of four players to average 10 points or more per game (10.4). Joining the two starters are graduate guard Merissah Russell, senior guard Jayda Curry and sophomore forward Elif Istanbuluoglu. Curry played in all 34 games last season and was one of five players to average nine points or more per game (9.2). Russell also played in all 34 games last season and earned her first collegiate start. She was one of seven players to average five points or more per game (5.1). Istanbuluoglu played in all 34 games in her first collegiate season and collected a double-double in just her third career game against Bellarmine.

■ **Newcomers** - Louisville brings in a large crop of newcomers with eight freshman and one collegiate transfer.

■ Senior Ja’Leah Williams joins the Cardinals after playing her first three collegiate seasons in the ACC at Miami. She played in 99 career games and made 81 starts at Miami and was part of the 2022-23 squad that reached the Elite Eight. She was selected to the 2022 ACC All-Freshman team after her first season with the Hurricanes.

■ Imari Berry was the highest-rated recruit by ESPN.com as she was No. 19 overall and a five-star recruit. She was a McDonald’s All-American and the 2024 Tennessee Girls Basketball Gatorade Player of the Year. She was the first player from Clarksville High School to be named Ms. Basketball in the state of Tennessee.

■ Mackenly Randolph was also a five-star prospect and ranked No. 23 overall by ESPN.com. She was a McDonald’s All-American with Berry and played in the All-American Game. Randolph also played in the Jordan Brand Classic with two other Louisville recruits (Roberts, Arenas). She was named a Third Team Naismith Trophy All-American.

■ Tajianna Roberts was one spot behind Randolph as she was ranked No. 24 overall by ESPN.com and a five-star recruit. Roberts played with Randolph and Arenas in the Jordan Brand Classic. She played in the Chipotle National Finals in her senior season with IMG. Roberts was named a Naismith Trophy Honorable Mention All-American.

■ Izela Arenas rounded out the Cardinals ranked in the Top-100 by ESPN.com as she came in at No. 88 overall. She was high school teammates with Randolph at Sierra Canyon. The duo won a CIF Open Division championship, a CIF State Open Division championship, an ESPN national championship and four league championships while playing at Sierra Canyon. Arenas also played in the Jordan Brand Classic with Randolph and Roberts.

■ Reagan Bender is a local product from Louisville and played at Sacred Heart. She won a state championship in all four years at Sacred Heart becoming the only program, boys or girls, to win four-straight titles in the state of Kentucky. Bender earned first team all-state honors and was a finalist for Miss Basketball in the state of Kentucky.

■ Isla Juffermans comes to Louisville from Australia where she had a successful prep and international career. She is coming off a season in the NBL where her team won the East Championship before coming to Louisville. She was the 2023 New South Wales Champion and won MVP. Competing for her country, she was named the MVP of the 2022 FUBA Under 18 Women’s Asian Championship.

CAREER 20-POINT GAMES

Imari Berry (1)		
vs. Morehead State	11/21/24	21
Olivia Cochran (3)		
vs. Liberty	11/25/23	21
DePaul	11/12/23	21
vs. Iowa	3/26/23	20
Jayda Curry (18) *at Cal		
Miami	1/2/25	21
vs. Notre Dame	3/8/24	26
at Colorado*	2/25/23	26
at Utah*	2/23/23	28
Southern Cal*	2/19/23	27
at Arizona State*	2/10/23	21
Oregon State*	1/29/23	21
at Stanford*	12/23/22	20
UC San Diego*	12/16/22	22
vs. Notre Dame*	11/12/22	24
at Oregon State*	2/20/22	23
at Southern Cal*	2/4/22	21
at Stanford*	1/21/22	30
Cal Poly*	12/18/21	27
Furman*	11/26/21	26
at UC San Diego*	11/20/21	20
at San Francisco*	11/13/21	27
Sacramento St.*	11/9/21	23
Nyla Harris (1)		
at Syracuse	2/11/24	22
Tajianna Roberts (3)		
at SMU	1/30/25	22
at Memphis	12/21/24	23
vs. UCLA	11/4/24	21

CAREER DOUBLE-DOUBLES

Olivia Cochran (17)		
at Virginia	1/26/25	10 pts., 11 rebs.
at Memphis	12/21/24	12 pts., 13 rebs.
Grambling State	12/12/24	18 pts., 11 rebs.
vs. MTSU	3/22/24	17 pts., 10 rebs.
Florida State	2/29/24	16 pts., 11 rebs.
at NC State	2/5/24	17 pts., 12 rebs.
Morehead State	12/13/23	16 pts., 11 rebs.
vs. Liberty	11/25/23	21 pts., 11 rebs.
vs. Iowa	3/26/23	20 pts., 14 rebs.
at Pitt	12/18/22	11 pts., 13 rebs.
Longwood	11/25/22	10 pts., 10 rebs.
at Belmont	11/13/22	13 pts., 13 rebs.
Northwestern	3/24/21	13 pts., 15 rebs.
Syracuse	3/6/21	10 pts., 10 rebs.
at Wake Forest	1/24/21	10 pts., 11 rebs.
at Duke	12/9/20	11 pts., 12 rebs.
DePaul	12/4/20	19 pts., 10 rebs.
Jayda Curry (1) *at Cal		
Arkansas-Pine Bluff*	12/03/22	19 pts., 10 rebs.
Elif Istanbuluoglu (1)		
Bellarmine	11/16/23	10 pts., 12 rebs.
Nyla Harris (8)		
Syracuse	1/16/25	10 pts., 11 rebs.
Grambling State	12/12/24	14 pts., 10 rebs.
Florida State	2/29/24	11 pts., 15 rebs.
at Syracuse	2/11/24	22 pts., 11 rebs.
Notre Dame	2/8/24	19 pts., 10 rebs.
Syracuse	2/1/24	18 pts., 14 rebs.
at Miami	12/31/23	13 pts., 12 rebs.
DePaul	11/12/23	13 pts., 11 rebs.
Ja’Leah Williams (1)		
Syracuse	1/16/25	11 pts., 10 rebs.

■ Anaya Hardy comes to Louisville from Detroit where she won three-straight PSL Championships with Renaissance High. Hardy was named 2024 AP First Team All-State, 20204 MLive's Metro Detroit Dream Team and 2024 Detroit Free Press First Team All-Area.

■ Rebekah Graves joins the Cardinals from Texas where she was named the 4-6A Defensive Player of the Year. Her older sister, Sarah, plays collegiately at the University of Texas Austin.

RETURNING STARTERS

The Cards returned five players that made a start in a Louisville uniform led by Olivia Cochran (150) and Nyla Harris (70), who both started all 34 games last season. Jayda Curry (14), Elif Istanbuluoglu (2) and Merissah Russell (5) have also made starts in a Louisville uniform. Between the five players, they have started 241 career games for the Cardinals. Louisville also brings in transfer guard Ja'Leah Williams, who has started 102 career games between Miami and Louisville.

PRESEASON HONORS FOR BERRY, COCHRAN, CURRY & HARRIS

Olivia Cochran, Jayda Curry, Nyla Harris and Imari Berry all earned preseason honors ahead of the 2024-25 season.

■ Cochran was named to the Katrina McClain Award Watch List for the fourth-straight season. She was one of just two players that has been on the McClain Award Watch List in each of the last four seasons.

■ Curry was named to the Ann Meyers Drysdale Award Watch List which highlights the best shooting guard in the country. This is the first time she has been named to a positional watch list in her collegiate career.

■ Harris was selected for the Lisa Leslie Award Watch List prior to the season, which honors the best center in college basketball. It is Harris' first positional watch list nomination for her collegiate career.

■ Berry was selected as one of five players on the ACC Newcomer Watch List, the Blue Ribbon Panel selected prior to the season. The Cardinals have had a player on the ACC Newcomer Watch List in five of the last six seasons.

ANOTHER 20-WIN SEASON

UofL defeated #12/14 Notre Dame 73-66 last season to reach 20 wins for the 14th-straight season and extended the program record. The 14-straight seasons with 20 or more wins is the fifth-longest active streak in the country. The longest run previously was three, achieved twice. The Cards have won at least 20 games in 16 of Walz's 17 seasons. Prior to Walz's arrival, Louisville had just 10 20-win seasons in its history.

HOME COURT ADVANTAGE

Since the KFC Yum! Center opened its doors for the 2010-11 season, the Cardinals have had one of the best home court advantages in the country. Louisville is 210-35 all-time at the KFC Yum! Center over the past 15 seasons. During that span, the Cardinals have won at least 11 home games every season. In six of those seasons, the Cardinals lost one home game or less. The Cardinals program record for consecutive home wins is 21 games, a streak that spanned over three seasons. Over the past eight seasons, Louisville is 105-11 at home.

BEST FANS IN THE COUNTRY

During the 2023-24 season, Louisville averaged 8,640 fans at the KFC Yum! Center, which was first in

the ACC and eighth in the country. The 8,640 fans per game ranked ninth in ACC men's basketball last season. For 14 straight-seasons, they have led the ACC and ranked in the top 10 in the country in attendance. Last season, they had a season-best 12,249 fans against Virginia Tech, the largest home crowd since the 2018-19 season.

Year	Avg.	High	DI Rank
2010-11	10,859	22,152 vs. UK (12/5/10)	2nd
2011-12	10,670	16,483 vs. UConn (2/7/12)	2nd
2012-13	9,358	15,453 vs. UK (12/2/12)	3rd
2013-14	9,469	22,163 vs. UConn (3/3/13)	3rd
2014-15	9,515	14,862 vs. UK (12/7/14)	3rd
2015-16	9,503	16,524 vs. Cal (11/15/15)	4th
2016-17	8,256	12,245 vs. UK (12/4/16)	5th
2017-18	7,836	14,248 vs. FSU (1/21/18)	5th
2018-19	9,531	17,023 vs. UConn (1/31/19)	3rd
2019-20	9,062	12,086 vs. ND (1/26/20)	5th
2020-21*	2,557	2,989 vs. NCST (2/1/21)	2nd
2021-22	8,361	12,167 vs. Kentucky (12/12/21)	4th
2022-23	8,779	12,015 vs. Notre Dame (2/26/23)	5th
2023-24	8,640	12,249 vs. Virginia Tech (2/18/24)	8th

*Fans limited due to covid protocols

THE LAST TIME LOUISVILLE ...

Defeated a Top-5 team:

Nov. 20, 2022 - No. 3 Texas, W, 71-63

Defeated a Top-25 team:

Jan. 12, 2025 - No. 13 Georgia Tech, W, 69-60

Scored 100 or more points:

Nov. 21, 2024 - vs. Morehead State, W, 107-70

Scored less than 50 points:

Dec. 15, 2024 - No. 22/20 NC State, L, 42-72

Allowed 100 or more points:

Dec. 20, 2009 - at Kentucky, L, 67-101

Held a team to less than 50 points:

Jan. 11, 2024 - at Pitt, W, 74-44

Won an overtime game:

Jan. 5, 2025 - at Wake Forest, W, 81-76 (OT)

Lost an overtime game:

Nov. 16, 2024 - at #20 Kentucky, L, 61-71 (OT)

Played a double-overtime game:

Dec. 19, 2019 - at UT Martin, W, 71-63 (2OT)

THE LAST TIME UOFL HAD ...

A player score 30 points:

31, Sydney Taylor at Georgia Tech (2/22/24)

A player score 35 points:

47, Asia Durr vs. NC State (2/28/19)

A player score 40 points:

47, Asia Durr vs. NC State (2/28/19)

Two players score 20 points in a game:

21, Olivia Cochran; 20, Kiki Jefferson vs. Liberty (11/25/23)

A player grab 15 boards:

15, Nyla Harris vs. Florida State (2/29/24)

A player grab 20 boards:

20, Angel McCoughtry vs. Syracuse (2/3/09)

Two or more players grab 10 rebounds in a game:

11, Nyla Harris; 10, Ja'Leah Williams vs. Syracuse (1/16/25)

A player dish out 10 assists:

10, Mykasa Robinson vs. Wake Forest (3/3/23)

A player record five or more steals:

6, Jayda Curry vs. NC A&T (12/3/23)

A player with five or more blocked shots:

5, Emily Engstler vs. FSU (1/27/22)

Two players record a double-double:

Nyla Harris, Ja'Leah Williams vs. Syracuse (1/16/25)

Three players record a double-double:

M. Hines-Allen, M. Moore, S. Fuehring vs. Va. Tech (2/9/17)

Seven players score in double figures:

Durr (12), Fuehring (12), Jones (12), Dunham (11), Hines-Allen (11), Shook (11), Evans (10) vs. TSU (12/12/17)

Eight players score in double figures:

Taylor (15), Harris (14), Mobley (12), Russell (11), Curry (11), Jefferson (11), Cochran (10), Istanbuluoglu (10) vs. BU (11/16/23)

A player records a triple-double:

11 pts., 11 rbs., 10 assts. Mariya Moore vs. Syracuse (12/29/16)

A player with 7 or more 3-pointers:

7, Sydney Taylor at Georgia Tech (2/22/24)

A player hit a last-second shot to win a game:

Emily Engstler, :03.3 at No. 16 Georgia Tech, 50-48 (1/2/21)

2024-25 Women's Basketball Results

RECORD: 15-6 Overall (Home: 6-2; Away: 8-2 Neutral: 1-2; ACC: 8-2)

Date	Opponent	Dec.	Result	Margin	Rec.	High Scorer	High Rebounder	High Assists	Attendance
N 4	vs. #5/#6 UCLA	L	59-66	-7	0-1	Roberts - 21	Williams - 7	Williams - 9	3,472
N 8	SOUTHERN INDIANA	W	75-51	+24	1-1	Cochran - 15	Berry - 8	Roberts, Williams - 4	7,666
N 12	at UT Martin	W	86-64	+22	2-1	Harris - 16	Berry - 9	Arenas - 4	1,453
N 16	at #20/#19 Kentucky	L	61-71 (OT)	-10	2-2	Berry - 14	Cochran - 6	Williams - 6	6,117
N 21	MOREHEAD STATE	W	107 -70	+37	3-2	Berry - 21	Cochran, Imafidon - 6	Williams - 8	7,344
N 24	vs. South Florida	W	64-60	+4	4-2	Berry, Cochran - 13	Cochran, Harris - 9	Williams - 7	1,310
N 30	at Colorado	W	79-71	+8	5-2	Cochran, Curry - 14	Harris - 4	Curry - 3	3,487
D 4	#11 OKLAHOMA	L	72-78	-6	5-3	Cochran - 17	Cochran - 7	Roberts - 3	7,446
D 7	vs. #2 UConn	L	52-85	-33	5-4	Berry - 10	Williams - 6	Roberts - 3	9,114
D 12	GRAMBLING STATE	W	96-57	+39	6-4	Cochran - 18	Cochran - 11	Williams, Roberts, Russell - 4	7,395
D 15	#22/#20 NC STATE	L	42-72	-30	6-5	Harris, Cochran - 8	Harris - 8	Curry - 2	9,116
D 21	at Memphis	W	87-68	+19	7-5	Roberts - 23	Cochran - 13	Williams - 7	2,021
D 29	at Boston College	W	86-73	+13	8-5	Curry - 14	Cochran - 7	Cochran, Roberts - 4	1,138
J 2	MIAMI	W	74-56	+18	9-5	Curry - 21	Williams - 7	Williams - 7	7,956
J 5	at Wake Forest	W	81-76 (OT)	+5	10-5	Harris - 18	Cochran - 7	Cochran, Williams, Russell - 4	1,019
J 9	at Pitt	W	65-56	+9	11-5	Roberts - 17	Harris - 8	Curry, Russell - 3	357
J 12	#13 GEORGIA TECH	W	69-60	+9	12-5	Roberts - 16	Williams - 7	Curry - 5	8,917
J 16	SYRACUSE	W	72-62	+10	13-5	Roberts - 13	Harris - 11	Williams - 7	7,442
J 19	at Virginia Tech	L	65-70	-5	13-6	Cochran - 14	Cochran - 8	Williams - 4	8,925
J 26	at Virginia	W	68-65	+3	14-6	Curry - 19	Cochran - 11	Curry - 8	5,551
J 30	at SMU	W	80-75	+5	15-6	Roberts - 22	Cochran - 5	Roberts - 5	1,148

Bold - Team season high

Louisville Women's Basketball Game-by-Game Team Statistics

Teams	FG-FGA	Pct	3FG-FGA	Pct	FT-FTA	Pct	O	D	Reb	PF-D	A	TO	STL	BLK	1Q	2Q	3Q	4Q	OT	TOT
UCLA	26-63	.413	8-23	.348	6-8	.750	15	32	47	12-15	20	22	4	7	13	19	18	16		66
Louisville	24-75	.320	6-29	.207	5-8	.625	19	24	43	15-11	15	14	12	3	18	11	17	13		59
Southern Indiana	21-56	.375	3-15	.200	6-12	.500	11	20	31	18-15	8	20	8	2	21	4	11	15		51
LOUISVILLE	29-64	.453	8-25	.320	9-18	.500	18	27	45	15-18	17	19	12	4	22	21	19	13		75
UT Martin	20-67	.299	6-27	.222	18-24	.750	19	14	33	24-19	9	13	13	6	11	9	21	23		64
Louisville	31-54	.574	4-12	.333	20-29	.690	14	32	46	19-24	18	21	8	6	25	19	23	19		86
Kentucky	27-58	.456	4-16	.250	13-18	.722	9	31	40	15-20	17	24	2	9	16	11	15	16	13	71
Louisville	23-64	.359	6-17	.353	9-15	.600	9	19	28	20-15	14	19	5	6	15	15	16	12	3	61
Morehead State	27-58	.466	10-20	.500	6-11	.545	3	21	24	20-9	16	17	4	1	27	10	20	13		70
LOUISVILLE	39-62	.629	16-27	.593	13-24	.542	10	28	38	9-20	25	13	5	5	28	31	20	28		107
South Florida	21-50	.420	8-18	.444	10-13	.769	6	24	30	17-18	13	19	12	1	21	8	17	14		60
Louisville	26-59	.441	3-16	.188	9-12	.750	12	25	37	18-17	17	17	5	3	18	21	14	11		64
Colorado	24-48	.500	5-14	.357	18-23	.783	10	15	25	23-22	17	25	6	4	16	17	22	16		71
Louisville	29-59	.492	4-17	.235	17-23	.739	16	17	33	22-23	12	18	17	2	10	25	21	23		79
Oklahoma	24-53	.453	9-24	.375	21-27	.778	11	32	43	23-29	15	27	6	5	14	15	20	29		78
LOUISVILLE	25-72	.347	8-26	.231	16-20	.800	17	20	37	29-23	15	19	11	2	21	20	19	12		72
UConn	33-63	.524	9-24	.375	10-16	.625	18	34	52	18-14	22	13	5	3	28	21	23	13		85
Louisville	16-62	.258	6-27	.222	14-20	.700	15	13	28	15-18	11	11	7	1	10	14	9	19		52
Grambling State	19-54	.352	3-7	.429	16-22	.727	14	15	29	19-22	8	27	8	1	15	12	11	19		57
LOUISVILLE	39-69	.565	7-18	.389	11-17	.647	18	26	44	22-19	22	19	12	3	19	23	28	26		96
NC State	29-66	.439	7-19	.368	7-10	.700	15	38	53	20-18	14	23	9	4	19	22	20	11		72
LOUISVILLE	16-67	.239	2-23	.087	8-16	.500	16	24	40	18-20	5	17	12	2	6	15	13	8		42
Memphis	23-57	.404	8-15	.533	14-25	.560	12	15	27	16-23	12	19	8	0	21	15	16	16		68
Louisville	36-60	.600	8-18	.444	7-10	.700	9	26	35	23-16	21	19	10	2	21	30	22	14		87
Boston College	25-52	.481	5-14	.357	18-22	.818	12	11	23	21-20	12	23	6	4	18	18	19	18		73
Louisville	31-62	.500	5-17	.294	19-26	.731	20	16	36	20-21	15	20	14	0	23	17	24	22		86
Miami	20-52	.385	4-17	.235	12-17	.706	8	25	33	12-19	9	19	3	1	14	13	13	16		56
LOUISVILLE	29-61	.475	9-26	.346	7-7	1.000	6	24	30	19-12	18	13	11	1	23	20	22	9		74
Wake Forest	27-46	.587	10-19	.526	12-19	.632	9	19	28	17-21	21	28	10	5	17	15	24	14	6	76
Louisville	27-60	.450	9-19	.474	18-19	.947	12	11	23	21-17	17	21	11	0	12	19	23	16	11	81
Pitt	18-51	.353	6-17	.353	14-16	.875	10	25	35	13-19	11	20	8	2	17	11	7	21		56
Louisville	26-66	.394	8-30	.267	5-7	.714	15	23	38	19-13	12	14	11	2	13	8	16	28		65
Georgia Tech	24-48	.500	5-12	.417	7-11	.636	5	19	24	17-14	12	16	7	1	13	10	26	11		60
LOUISVILLE	29-55	.527	3-17	.176	8-12	.667	11	20	31	14-17	14	15	7	0	18	19	22	10		69
Syracuse	25-59	.424	6-16	.375	6-9	.667	11	18	29	14-14	12	14	8	5	15	15	21	11		62
LOUISVILLE	29-63	.460	5-15	.333	9-12	.750	16	24	40	14-14	18	15	6	1	21	12	26	13		72
Virginia Tech	23-43	.535	6-16	.375	18-25	.720	2	23	25	15-25	12	14	3	2	17	17	24	12		70
Louisville	26-66	.394	2-18	.111	11-17	.647	17	22	39	25-15	10	13	4	2	14	13	18	20		65
Virginia	29-57	.509	1-14	.071	6-9	.667	8	23	31	10-11	13	15	9	11	12	17	16	20		65
Louisville	27-70	.386	6-22	.273	8-10	.800	20	23	43	11-10	19	15	9	2	25	19	18	6		68
SMU	23-49	.469	7-16	.438	22-25	.880	11	19	30	13-18	14	21	7	1	15	17	19	24		75
Louisville	30-57	.526	8-19	.421	12-13	.923	8	17	25	18-13	22	15	13	3	21	20	20	19		80

Team Extended Statistics

Team Box Score Extended

No.	Player	GP-GS			Total		3-Point		F-Throw		Rebounds				PF			A/G			TO/G			BLK			STL			PTS		AVG	
		MIN	AVG	FG-FGA	FG%	3FG-3FGA	3FG%	FT-FTA	FT%	OFF	DEF	TOT	AVG	PF	DQ	A	A/G	TO	TO/G	A/TO	BLK	BLK/G	STL	STL/G	PTS	AVG							
22	ROBERTS, Tajianna	21-21	628:30	29.9	106-255	.416	33-111	.297	28-42	.667	21	42	63	3.0	30	0	50	2.38	42	2.00	1.19	3	0.14	40	1.90	273	13.0						
30	CURRY, Jayda	17-9	457:48	26.9	63-170	.371	34-99	.343	42-44	.955	3	31	34	2.0	47	1	52	3.06	26	1.53	2.00	0	0.00	17	1.00	202	11.9						
2	HARRIS, Nyla	21-21	530:23	25.3	90-148	.608	0-0	.000	34-46	.739	62	54	116	5.5	46	2	15	0.71	42	2.00	0.36	8	0.38	21	1.00	214	10.2						
44	COCHRAN, Olivia	21-21	538:28	25.6	86-174	.494	3-14	.214	38-52	.731	44	92	136	6.5	58	4	29	1.38	48	2.29	0.60	12	0.57	23	1.10	213	10.1						
12	WILLIAMS, Ja'Leah	21-21	505:55	24.1	53-118	.449	3-14	.214	27-48	.563	35	55	90	4.3	47	0	85	4.05	47	2.24	1.81	6	0.29	35	1.67	136	6.5						
1	BERRY, Imari	20-0	248:05	12.4	41-104	.394	23-59	.390	5-6	.833	8	39	47	2.4	22	0	20	1.00	18	0.90	1.11	5	0.25	10	0.50	110	5.5						
13	RUSSELL, Merissah	21-3	367:26	17.5	37-97	.381	14-55	.255	22-27	.815	24	34	58	2.8	34	1	34	1.62	16	0.76	2.13	3	0.14	22	1.05	110	5.2						
0	ARENAS, Izela	19-0	208:28	11.0	32-82	.390	15-41	.366	5-6	.833	8	17	25	1.3	20	0	16	0.84	21	1.11	0.76	1	0.05	9	0.47	84	4.4						
11	ISTANBULLUOGLU, Elif	21-0	298:00	14.2	30-62	.484	1-16	.063	10-17	.588	14	28	42	2.0	27	0	10	0.48	23	1.10	0.43	0	0.00	8	0.38	71	3.4						
4	RANDOLPH, Mackenly	20-9	235:50	11.8	25-58	.431	1-16	.063	12-20	.600	15	16	31	1.6	26	0	19	0.95	23	1.15	0.83	2	0.10	13	0.65	63	3.2						
15	JUFFERMANS, Isla	14-0	115:40	8.3	14-32	.438	0-0	.000	9-13	.692	14	12	26	1.9	20	0	4	0.29	17	1.21	0.24	6	0.43	1	0.07	37	2.6						
21	BENDER, Reagan	9-0	72:21	8.0	4-15	.267	4-13	.308	1-3	.333	1	3	4	0.4	6	0	2	0.22	5	0.56	0.40	0	0.00	3	0.33	13	1.4						
9	HARDY, Anaya	8-0	22:39	2.8	4-8	.500	0-0	.000	1-6	.167	3	2	5	0.6	1	0	0	0.00	1	0.13	0.00	0	0.00	0	0.00	9	1.1						
10	IMAFIDON, Eseosa	6-0	20:28	3.4	2-4	.500	0-0	.000	1-5	.200	7	4	11	1.8	1	0	1	0.17	1	0.17	1.00	5	0.83	0	0.00	5	0.8						
Total		21	4250		587-1327	.442	131-438	.299	235-335	.701	298	461	759	36.1	385	8	337	16.05	348	16.57	0.97	51	2.43	202	9.62	1540	73.3						
Opponents		21	4250		508-1150	.442	130-363	.358	260-362	.718	219	473	692	33.0	356	7	287	13.67	419	19.95	0.68	75	3.57	146	6.95	1406	67.0						

Score by Periods

Team	1st	2nd	3rd	4th	OT	TOT
Louisville	383	392	410	341	14	1540
Opponents	360	296	383	348	19	1406

Louisville Women's Basketball Specialty Statistics

GAME	Points in Paint	Points Off TO	2nd Chance	Fast Break	Fast Bench	Largest Lead	Largest Deficit	Times Tied	Lead Changes	Lead Margins Half	Margins Final
vs. #5/#6 UCLA	20/32	19/19	15/19	15/6	11/23	6 (1st, 8:54)	10 (4th, 4:02)	4	13	-3	-7
Southern Indiana	34/26	19/15	16/11	4/10	31/10	33 (4th, 4:36)	4 (1st, 0:54)	3	4	+18	+24
at UT Martin	52/18	17/19	19/11	20/5	30/9	33 (4th, 6:34)	1 (1st, 9:26)	0	2	+24	+22
at #20/#19 Kentucky	30/38	24/18	3/10	9/4	25/0	7 (3rd, 1:08)	10 (OT, 0:25)	6	9	+3	-10
Morehead State	40/24	27/15	11/3	13/0	72/14	37 (4th, 0:19)	1 (1st, 4:32)	2	4	+22	+37
vs. South Florida	32/20	18/22	11/4	10/19	31/15	13 (3rd, 8:01)	11 (1st, 2:39)	1	4	+10	+4
at Colorado	44/38	33/13	9/11	28/12	43/26	15 (4th, 4:17)	8 (1st, 5:12)	8	10	+2	+8
#11 Oklahoma	22/30	28/19	12/10	2/5	28/17	17 (2nd, 2:11)	6 (4th, 0:07)	6	4	+12	-6
vs. #2 UConn	16/38	10/16	8/21	5/9	31/28	0	46 (3rd, 1:01)	0	0	-25	-33
Grambling State	46/20	29/14	15/11	12/2	45/29	42 (4th, 0:30)	7 (1st, 7:13)	0	3	+15	+39
#22/#20 NC State	24/34	8/18	7/15	4/2	13/28	0	35 (4th, 4:10)	0	0	-20	-30
at Memphis	44/20	18/25	8/4	16/12	36/8	22 (3rd, 1:20)	1 (1st, 6:23)	1	4	+15	+19
at Boston College	40/36	28/16	24/11	19/6	22/12	13 (4th, 0:10)	2 (1st, 1:58)	5	10	+4	+13
Miami	26/32	26/10	6/5	13/0	10/6	28 (4th, 9:48)	2 (1st, 9:40)	1	1	+16	+18
at Wake Forest	20/24	15/26	14/3	11/2	20/23	5 (OT, 1:02)	7 (2nd, 6:18)	11	12	-1	+5
at Pitt	26/18	20/9	13/13	15/11	15/14	14 (4th, 2:35)	9 (2nd, 0:53)	4	2	-7	+9
#13 Georgia Tech	42/30	22/9	13/4	6/4	13/14	18 (3rd, 2:22)	5 (1st, 9:11)	3	1	+14	+9
Syracuse	36/30	18/15	10/13	4/0	16/27	15 (3rd, 4:50)	1 (2nd, 3:06)	2	2	+3	+10
at Virginia Tech	44/26	15/10	13/1	2/3	11/20	0	13 (3rd, 1:02)	0	1	-7	-5
at Virginia	28/52	10/12	15/8	7/15	10/12	17 (2nd, 0:36)	0	1	0	+15	+3
at SMU	24/26	26/25	11/6	10/10	21/6	14 (4th, 9:23)	2 (2nd, 7:22)	5	4	+9	+5

Louisville Women's Basketball Miscellaneous Statistics

Louisville's Record When the Cardinals ...

Lead at halftime	13-2
Trail at halftime	2-4
Tied at halftime	0-0
Shoot better from the field than opponent	12-0
Shoot worse from the field than opponent.....	3-6
Shoot the same from the field as opponent.....	0-0
Shoot 50 percent or better from the field	7-0
Shoot below 50 percent from the field	8-6
Opp. shoots 50 pct. or better from the field	4-2
Opp. shoots below 50 pct. from the field	11-4
Make more than 7 3-point goals	6-0
Make 7 or fewer 3-point goals	9-6
Attempt 20 or more 3-point field goals.....	5-4
Attempt less than 20 3-point field goals.....	10-2
Make more free throws than opponent.....	8-2
Opponent makes more free throws	7-4
Free throws made are even.....	0-0
Outrebound their opponent.....	12-1
Outrebounded by their opponent.....	3-5
Rebounds are even	0-0
Bench outscores the opposing bench	11-3
Opponent bench outscores bench.....	4-3
Bench points are even.....	0-0
Commit fewer turnovers than opponent	10-6
Commit more turnovers than opponent.....	3-0
Turnovers are even	2-0
Lead with 5:00 remaining	15-2
Trail with 5:00 remaining.....	0-4
Tied with 5:00 remaining	0-0
Play an overtime game.....	0-1
1-4 point margins	2-0
5-10 point margins.....	6-4
11-20 point margins	3-0
21 or more point margins.....	4-2
vs. AP Top 25 teams	1-5
Play at home.....	6-2
Play on the road	8-2
Play on a neutral court.....	1-2
Score 59 points or less.....	0-3
Score 60-69 points	4-2
Score 70-79 points	4-1
Score 80-89 points	5-0
Score 90 points or more	2-0
Allow 59 points or less	4-0
Allow 60-69 points	6-1
Allow 70-79 points	5-4
Allow 80-89 points	0-1
Allow 90 points or more	0-0
Play after a loss	5-1
Score the first point.....	11-2
November	5-2
December	3-3
January	7-1
February	0-0
March.....	0-0

Points in Paint		
Louisville.....	690 (32.9)	Opp..... 601 (28.6)

Points Off Turnovers		
Louisville.....	430 (20.5)	Opp..... 345 (16.4)

Second Chance Points		
Louisville.....	233 (11.1)	Opp..... 189 (9.0)

Fast Break Points		
Louisville.....	212 (10.1)	Opp..... 137 (6.5)

Bench Scoring		
Louisville.....	524 (25.0)	Opp..... 335 (16.0)

Double-Figure

Scoring Games	
Roberts	17
Curry.....	13
Cochran	12
Harris	11
Williams	6
Berry	5
Arenas	4
Russell.....	2
Juffermans.....	1

Games Leading

UofL in Scoring	
Cochran	7
Roberts	6
Harris	4
Berry	4
Curry.....	4

Games Leading

UofL in Rebounding	
Cochran	11
Harris	5
Williams	4
Berry	2
Imafidon.....	1

Games Leading

UofL in Assists	
Williams	11
Roberts	6
Curry.....	5
Russell.....	3
Cochran	2
Arenas	1

Scored Louisville's First Points

Who	
Harris	7
Williams	5
Roberts	4
Cochran	3
Curry.....	1
Randolph.....	1

How

Layup.....	9
Jump Shot	8
Free Throw	3
Three Pointer.....	1

Double-Doubles

Cochran	3
Harris	2
Williams	1

Jump Balls Controlled

UofL.....	14
Opponents.....	7

Starting Lineups

W-L

8-1	Williams	Curry	Roberts	Cochran	Harris
2-1	Williams	Roberts	Russell	Cochran	Harris
5-4	Williams	Roberts	Randolph	Cochran	Harris

Scoring Summary

	1st Pd.	2nd Pd.	3rd Pd.	4th Pd.	OT	Total
Louisville	383	392	410	341	14	1540
Opponents	360	296	383	348	19	1406

Louisville Women's Basketball Team Superlatives

Louisville High	Louisville Low	Statistical Category	Opponent High	Opponent Low
107 vs. Morehead State (11/21/24)	42 vs. NC State (12/15/24)	Points	85 vs. UConn (12/7/24)	51 vs. Southern Indiana (11/8/24)
59 vs. Morehead State (11/21/24)	21 (2x), MR at Pitt (1/9/25)	First-Half Points	49 vs. UConn (12/7/24)	20 at UT Martin (11/12/24)
54 vs. Grambling State (12/12/24)	21 vs. NC State (12/15/24)	Second-Half Points	49 vs. Oklahoma (12/4/24)	26 vs. Southern Indiana (11/8/24)
39 (2x), MR vs. Grambling State (12/12/24)	16 (2x), MR vs. NC State (12/15/24)	Field Goals	33 vs. UConn (12/7/24)	18 at Pitt (1/9/25)
75 vs. UCLA (11/4/24)	54 at UT Martin (11/12/24)	Field Goal Attempts	67 at UT Martin (11/12/24)	43 at Virginia Tech (1/19/25)
.629 vs. Morehead State (11/21/24)	.239 vs. NC State (12/15/24)	FG Percentage	.587 at Wake Forest (1/5/25)	.299 at UT Martin (11/12/24)
16 vs. Morehead State (11/21/24)	2 (2x), MR at Virginia Tech (1/19/25)	3-Point Field Goals	10 (2x), MR at Wake Forest (1/5/25)	1 at Virginia (1/26/25)
30 at Pitt (1/9/25)	12 at UT Martin (11/12/24)	3-Point Field Goal Att.	27 at UT Martin (11/12/24)	7 vs. Grambling State (12/12/24)
.593 vs. Morehead State (11/21/24)	.087 vs. NC State (12/15/24)	3-Point FG Percentage	.533 at Memphis (12/21/24)	.071 at Virginia (1/26/25)
20 at UT Martin (11/12/24)	5 (2x), MR at Pitt (1/9/25)	Free Throws	22 at SMU (1/30/25)	6 (3x), MR at Virginia (1/26/25)
29 at UT Martin (11/12/24)	7 at Pitt (1/9/25)	Free Throw Attempts	27 vs. Oklahoma (12/4/24)	8 vs. UCLA (11/4/24)
1.000 vs. Miami (1/2/25)	.500 (2x), MR vs. NC State (12/15/24)	Free Throw Percentage	.880 at SMU (1/30/25)	.500 vs. Southern Indiana (11/8/24)
20 (2x), MR at Virginia (1/26/25)	6 vs. Miami (1/2/25)	Offensive Rebounds	19 at UT Martin (11/12/24)	2 at Virginia Tech (1/19/25)
32 at UT Martin (11/12/24)	11 at Wake Forest (1/5/25)	Defensive Rebounds	38 vs. NC State (12/15/24)	11 at Boston College (12/29/24)
46 at UT Martin (11/12/24)	23 at Wake Forest (1/5/25)	Total Rebounds	53 vs. NC State (12/15/24)	23 at Boston College (12/29/24)
29 vs. Oklahoma (12/4/24)	9 vs. Morehead State (11/21/24)	Fouls	24 at UT Martin (11/12/24)	10 at Virginia (1/26/25)
25 vs. Morehead State (11/21/24)	5 vs. NC State (12/15/24)	Assists	22 vs. UConn (12/7/24)	8 vs. Southern Indiana (11/8/24)
21 at UT Martin (11/12/24)	11 vs. UConn (12/7/24)	Turnovers	28 at Wake Forest (1/5/25)	13 (2x), MR vs. UConn (12/7/24)
6 at Kentucky (11/16/24)	0 (3x), MR vs. Georgia Tech (1/12/25)	Blocked Shots	11 at Virginia (1/26/25)	0 at Memphis (12/21/24)
17 at Colorado (11/30/24)	4 at Virginia Tech (1/19/25)	Steals	13 at UT Martin (11/12/24)	2 (2x), MR at Virginia Tech (1/19/25)

Louisville Women's Basketball Individual Superlatives

	Louisville	Opponent
Points	23 by Tajianna Roberts at Memphis (12/21/24)	32 by Nya Robertson at SMU (1/30/25)
Field Goals Made	10 by Tajianna Roberts at Memphis (12/21/24)	9 (2x), MR by Paris Clark at Virginia (1/26/25)
Field Goals Attempted	19 by Tajianna Roberts vs. UCLA (11/4/24)	19 by Aziaha James vs. NC State (12/15/24)
Highest FG Pct. (min. 5 made)	1.000 (5-5) by Nyla Harris vs. Georgia Tech (1/12/25)	.875 (7-8) by Zamareya Jones vs. NC State (12/15/24)
3-Point Field Goals Made	5 (3x), MR by Jayda Curry at Virginia (1/26/25)	5 (4x), latest by Rylie Theuerkauf at Wake Forest (1/5/25)
3-Point Field Goals Attempted	12 by Jayda Curry at Virginia (1/26/25)	10 by Kenley McCarn at UT Martin (11/12/24)
3-Point FG Pct. (min. 3 made)	.800 (4-5) by Imari Berry at Kentucky (11/16/24)	.714 (5-7) by Timea Gardiner vs. UCLA (11/4/24)
Free Throws Made	9 by Olivia Cochran at Wake Forest (1/5/25)	13 by Nya Robertson at SMU (1/30/25)
Free Throws Attempted	9 by Olivia Cochran at Wake Forest (1/5/25)	13 by Nya Robertson at SMU (1/30/25)
Free Throw Pct. (min. 6 made)	1.000 (2x), MR by Nyla Harris at SMU (1/30/25)	1.000 (3x), MR by Nya Robertson at SMU (1/30/25)
Offensive Rebounds	7 by Nyla Harris vs. Syracuse (1/16/25)	6 by Jessica Peterson at SMU (1/30/25)
Defensive Rebounds	11 by Olivia Cochran at Memphis (12/21/24)	13 (2x), latest by Saniya Rivers vs. NC State (12/15/24)
Total Rebounds	13 by Olivia Cochran at Memphis (12/21/24)	13 (4x), latest by Saniya Rivers vs. NC State (12/15/24)
Turnovers	6 by Olivia Cochran at Colorado (11/30/24)	9 (2x), MR by Nya Robertson at SMU (1/30/25)
Assists	9 by Ja'Leah Williams vs. UCLA (11/4/24)	10 by Kindyll Wetta at Colorado (11/30/24)
Blocked Shots	3 (3x), latest by Eseosa Imafidon vs. Morehead State (11/21/24)	5 by Teonni Key at Kentucky (11/16/24)
Steals	4 (5x), latest by Tajianna Roberts at SMU (1/30/25)	4 (2x), latest by Alasia Smith at Memphis (12/21/24)
Minutes Played (regulation game)	40:00 by Ja'Leah Williams vs. Georgia Tech (1/12/25)	40:00 by Mama Dembele vs. South Florida (11/24/24)
Minutes Played (overtime game)	39:33 by Ja'Leah Williams at Kentucky (11/16/24)	45:00 by Georgia Amooore at Kentucky (11/16/24)



O IZELA ARENAS

Guard | 5-9 | Freshman
Porter Ranch, Calif. | Sierra Canyon

SEASON HIGHS

Points..... 13 vs. Grambling State (12/12/24)
 Reb..... 3 (6x), MR at Pitt (1/9/25)
 Asst..... 4 at UT Martin (11/12/24)
 Blocks.....
 Steals 2 (3x), MR at Pitt (1/9/25)
 FGM 5 vs. Grambling State (12/12/24)
 FGA 12 vs. USI (11/8/24)
 3FGM..... 3 (2x), MR at SMU (1/30/25)
 3FGA 6 at SMU (1/30/25)
 FT 2 (2x), MR at Colorado (11/30/24)
 FTA 2 (3x), MR at Colorado (11/30/24)
 Minutes..... 27 at Colorado (11/30/24)

MISC STATS

	Season	Career
Double-Doubles.....	0	0
10-Plus Points.....	4	4
20-Plus Points.....	0	0
30-Plus Points.....	0	0
Team-High Points.....	0	0
10-Plus Rebounds.....	0	0
Team-High Rebounds.....	0	0
10-Plus Assists.....	0	0
Team-High Assists.....	1	1

2024-25 GAME-BY-GAME

Opponent	Min	FG-A	3PT-A	FT-A	O-D-T	PF	AST	TO	STL	BLK	PTS	AVG
vs. UCLA	10	1-6	1-4	0-0	1-0-1	0	1	0	0	0	3	3.0
SOUTHERN INDIANA	23	3-12	1-5	0-0	1-2-3	0	1	2	0	0	7	5.0
at UT Martin	17	2-5	0-1	1-2	1-2-3	2	4	5	1	0	5	5.0
at Kentucky	3	0-0	0-0	0-0	0-0-0	1	0	0	0	0	0	3.8
MOREHEAD ST.	13	2-4	2-3	2-2	1-2-3	1	0	1	0	0	8	4.6
vs. USF												--DNP--
at Colorado	27	4-8	1-4	2-2	1-2-3	4	2	3	2	0	11	5.7
OKLAHOMA	6	0-1	0-1	0-0	0-0-0	0	0	0	0	0	0	4.9
vs. UConn	14	1-6	1-4	0-0	0-0-0	0	1	0	0	0	3	4.6
GRAMBLING ST.	12	5-8	3-4	0-0	1-2-3	1	1	1	0	0	13	5.6
NC STATE	11	1-3	0-2	0-0	0-0-0	2	1	1	1	0	2	5.2
at Memphis	1	0-0	0-0	0-0	0-0-0	0	0	1	0	0	0	4.7
at Boston College	3	0-0	0-0	0-0	0-1-1	1	0	0	0	0	0	4.3
MIAMI	3	0-0	0-0	0-0	0-0-0	1	0	0	0	0	0	4.0
at Wake Forest	11	4-5	2-2	0-0	0-1-1	2	1	1	2	0	10	4.4
at Pitt	8	2-4	0-1	0-0	1-2-3	1	1	0	2	0	4	4.4
GEORGIA TECH	5	1-1	1-1	0-0	0-0-0	0	0	1	0	0	3	4.3
SYRACUSE												--DNP--
at Virginia Tech	8	0-2	0-1	0-0	1-1-2	4	1	2	0	0	0	4.1
at Virginia	10	2-6	0-2	0-0	0-1-1	0	0	1	0	0	4	4.1
at SMU	24	4-11	3-6	0-0	0-1-1	0	2	2	1	1	11	4.4
NOTRE DAME												
CAL												
STANFORD												
at Florida State												
at Duke												
NORTH CAROLINA												
CLEMSON												
at Notre Dame												

Freshman Year (2024-25)

- Tied a career high with three three-pointers and had 11 points in the road win over SMU
- Recorded 10 points, all in the second quarter, on 4-for-5 shooting and 2-for-2 from behind the arc while tying a season high with two steals in the win over Wake Forest
- Scored a season-best 13 points and was 3-for-4 from behind the arc and tied a season high with three rebounds in the win against Grambling State
- Tallied a season-high 11 points to go with a season-best three rebounds, two steals and two assists in the road win over Colorado
- Scored a season-best eight points and made two threes against Morehead State
- Led the team with four assists in the road win over UT Martin
- Scored seven points in the win over USI
- Made her collegiate debut against #5/#6 UCLA

Prep and Personal

- Played in the Jordan Brand Classic with Tajianna Roberts and Mackenly Randolph
- In May of 2023, she won the Queen of the Court event, which is a one-on-one showcase with some of the top female basketball players in the country
- Four-star prospect ranked No. 88 by espnW HoopGurlz
- She chose the Cardinals over Oregon, Arizona and Iowa State among others
- Played for Sierra Canyon and was teammates with Mackenly Randolph
- While playing for Sierra Canyon, Arenas won a CIF Open Division championship, a CIF State Open Division championship, an ESPN national championship and four league championships
- During her junior season, Sierra Canyon was ranked No. 1 in the country
- Daughter of former NBA All-Star Gilbert Arenas

IZELA ARENAS CAREER STATISTICS

SEASON	TEAM	GP-GS	MIN/AVG	Field Goals		3-Point		F-Throws		Rebounds				Scoring						
				FG-FGA	FG%	3FG-3FGA	3FG%	FT-FTA	FT%	OFF	DEF	TOT	AVG	PF-FO	A	TO	BLK	STL	PTS	AVG
2024-25	LOU	19-0	208/11.0	32-82	.390	15-41	.366	5-6	.833	8	17	25	1.3	20-0	16	21	1	9	84	4.4
TOTAL		19-0	208/11.0	32-82	.390	15-41	.366	5-6	.833	8	17	25	1.3	20-0	16	21	1	9	84	4.4



1 IMARI BERRY

Guard | 5-10 | Freshman
Clarksville, Tenn. | Clarksville

SEASON HIGHS

Points.....	21 vs. Morehead State (11/21/24)
Reb.....	9 at UT Martin (11/12/24)
Asst.....	4 vs. Morehead State (11/21/24)
Blocks.....	1 (5x), MR vs. NC State (12/15/24)
Steals.....	2 (2x), MR at Virginia (1/26/25)
FGM.....	8 vs. Morehead State (11/21/24)
FGA.....	12 vs. Morehead State (11/21/24)
3FGM.....	5 vs. Morehead State (11/21/24)
3FGA.....	8 vs. Morehead State (11/21/24)
FT.....	2 at Kentucky (11/18/24), at UT Martin (11/12/24)
FTA.....	2 (3x), MR vs. UConn (12/7/24)
Minutes.....	24 vs. USF (11/24/24)

MISC STATS

	Season	Career
Double-Doubles.....	0	0
10-Plus Points.....	5	5
20-Plus Points.....	1	1
30-Plus Points.....	0	0
Team-High Points.....	4	4
10-Plus Rebounds.....	0	0
Team-High Rebounds.....	2	2
10-Plus Assists.....	0	0
Team-High Assists.....	0	0

2024-25 GAME-BY-GAME

Opponent	Min	FG-A	3PT-A	FT-A	O-D-T	PF	AST	TO	STL	BLK	PTS	AVG
vs. UCLA	16	1-7	0-4	0-0	1-2-3	2	0	2	0	1	2	2.0
SOUTHERN INDIANA	19	2-6	0-1	0-0	4-4-8	3	2	1	1	1	4	3.0
at UT Martin	22	3-6	2-3	2-2	1-8-9	2	0	2	1	1	10	5.3
at Kentucky	20	4-8	4-5	2-2	0-1-1	1	1	3	1	0	14	7.5
MOREHEAD ST.	18	8-12	5-8	0-0	0-3-3	1	4	1	0	0	21	10.2
vs. USF	24	5-10	3-6	0-0	0-2-2	3	2	3	0	1	13	10.7
at Colorado	11	2-6	1-2	0-0	0-2-2	1	0	0	2	0	5	9.9
OKLAHOMA	14	0-6	0-6	0-0	1-1-2	0	2	1	0	0	0	8.6
vs. UConn	13	3-8	2-5	1-2	0-1-1	1	1	0	0	0	10	8.8
GRAMBLING ST.	15	3-4	0-0	0-0	1-6-7	1	3	2	0	0	6	8.5
NC STATE	16	1-7	0-2	0-0	0-1-1	0	0	1	1	1	2	7.9
at Memphis	8	2-7	2-4	0-0	0-1-1	3	1	1	0	1	6	7.8
at Boston College	5	2-2	2-2	0-0	0-0-0	3	0	1	0	0	6	7.6
MIAMI	6	0-2	0-2	0-0	0-1-1	3	0	0	0	0	0	7.1
at Wake Forest	2	0-0	0-0	0-0	0-0-0	0	0	0	0	0	0	6.6
at Pitt	6	1-2	0-1	0-0	0-1-1	0	0	0	0	0	2	6.3
GEORGIA TECH					-DNP-							
SYRACUSE	8	1-1	1-1	0-0	0-1-1	0	0	0	0	0	3	6.1
at Virginia Tech	4	0-3	0-3	0-0	0-0-0	1	0	1	0	0	0	5.8
at Virginia	8	2-4	0-2	0-0	0-2-2	0	0	0	2	0	4	5.7
at SMU	12	1-3	0-2	0-0	0-2-2	0	2	0	1	0	2	5.5
NOTRE DAME												
CAL												
STANFORD												
at Florida State												
at Duke												
NORTH CAROLINA												
CLEMSON												
at Notre Dame												

Freshman Year (2024-25)

- Had a team-best 10 points and hit three three-pointers against #2 UConn
- Led the team in scoring with 13 points on 5-for-10 shooting and was 3-for-6 from behind the arc in the win over USF
- Had a team-high 21 points, shot 8-for-12 from the floor 5-for-8 from three, to go with four assists in the win over Morehead State
- The five three pointers were the most by a Louisville freshman since the 2020-21 season
- Had a team-high 14 points and was 4-for-5 from three on the road against #20 Kentucky. She scored 12-straight points for the Cards between the third and fourth quarter.
- Led the team with nine rebounds and scored 10 points in the win over UT Martin
- Led the team with eight rebounds in the win over USI
- Made her collegiate debut against #5/#6 UCLA
- 2024 ACC Newcomer Watch List

Prep and Personal

- 2024 McDonald's All-American
- 2024 Tennessee Girls Basketball Gatorade Player of the Year
- 2024 Tennessee Class 4A Ms. Basketball
- She was the first player from Clarksville High School to be named Ms. Basketball in the state of Tennessee
- She was a finalist for Ms. Basketball in her sophomore and junior seasons (2022, 2023)
- In her senior season, she led Clarksville to an undefeated regular season and second-straight trip to the state tournament
- 2023 Leaf-Chronicle Girls Basketball Player of the Year
- Five-star prospect, No. 19 ranked recruit and the highest-ranked player from the state of Tennessee by espnW HoopGurlz
- Chose the Cardinals over Kentucky and North Carolina

IMARI BERRY CAREER STATISTICS

SEASON	TEAM	GP-GS	MIN/AVG	Field Goals		3-Point		F-Throws		Rebounds				Scoring						
				FG-FGA	FG%	3FG-3FGA	3FG%	FT-FTA	FT%	OFF	DEF	TOT	AVG	PF-FO	A	TO	BLK	STL	PTS	AVG
2024-25	LOU	20-0	248/12.4	41-104	.394	23-59	.390	5-6	.833	8	39	47	2.4	22-0	20	18	5	10	110	5.5
TOTAL		20-0	248/12.4	41-104	.394	23-59	.390	5-6	.833	8	39	47	2.4	22-0	20	18	5	10	110	5.5



2 NYLA HARRIS

Forward | 6-2 | Junior
Orlando, Fla. | Lake Highland Prep

SEASON HIGHS

Points..... 18 at Wake Forest (1/5/25)
Reb..... 11 vs. Syracuse (1/16/25)
Asst..... 2 (6x), MR at SMU (1/30/25)
Blocks..... 2 vs. Oklahoma (12/4/24)
Steals..... 3 (4x), MR at SMU (1/30/25)
FGM..... 8 at Wake Forest (1/5/25)
FGA..... 11 vs. Syracuse (1/16/25)
3FGM.....
3FGA.....
FT..... 6 at SMU (1/30/25)
FTA..... 6 at SMU (1/30/25)
Minutes..... 37 at Wake Forest (1/5/25)

CAREER HIGHS

Points..... 22 at Syracuse (2/11/24)
Reb..... 15 vs. Florida State (2/29/24)
Asst..... 2 (12x), MR at SMU (1/30/25)
Blocks..... 3 at Syracuse (1/29/23)
Steals..... 4 vs. Drake (3/18/23)
FGM..... 9 vs. Notre Dame (2/8/24)
FGA..... 13 vs. Alabama (11/24/23)
3FGM.....
3FGA..... 1 vs. Liberty (11/25/23)
FT..... 8 (2x), MR at Syracuse (2/11/24)
FTA..... 10 vs. Syracuse (2/1/24)
Minutes..... 38 (2x), latest vs. Florida State (2/29/24)

MISC STATS

	Season	Career
Double-Doubles.....	2	8
10-Plus Points.....	11	29
20-Plus Points.....	0	1
30-Plus Points.....	0	0
Team-High Points.....	3	11
10-Plus Rebounds.....	2	12
Team-High Rebounds.....	5	20
10-Plus Assists.....	0	0
Team-High Assists.....	0	2

2024-25 GAME-BY-GAME

Opponent	Min	FG-A	3PT-A	FT-A	O-D-T	PF	AST	TO	BLK	PTS	AVG
vs. UCLA*	21	3-9	0-0	0-0	2-2-4	1	1	2	3	0	6.0
SOUTHERN INDIANA*	17	4-7	0-0	1-4	2-0-2	0	1	2	0	1	7.5
at UT Martin*	22	6-8	0-0	4-4	2-1-3	1	2	0	1	0	10.3
at Kentucky*	34	2-7	0-0	1-3	0-4-4	4	0	3	0	1	5.0
MOREHEAD ST.*	10	4-6	0-0	0-0	2-1-3	0	0	0	0	1	8.8
vs. USF*	34	3-3	0-0	2-4	4-5-9	2	0	1	0	1	8.7
at Colorado*	31	5-7	0-0	4-4	2-2-4	2	2	4	3	1	14.9
OKLAHOMA*	26	3-10	0-0	4-4	5-1-6	5	2	2	3	2	10.9
vs. UConn*	20	0-3	0-0	2-2	2-2-4	2	2	2	0	0	2.8
GRAMBLING ST.*	19	6-7	0-0	2-4	6-4-10	3	0	2	1	1	14.9
NC STATE*	22	4-10	0-0	0-2	5-3-8	0	0	3	0	0	8.9
at Memphis*	16	4-4	0-0	0-0	1-2-3	5	0	3	0	0	8.9
at Boston College*	26	5-6	0-0	2-2	3-2-5	3	0	4	1	0	12.9
MIAMI*	27	4-7	0-0	0-0	1-5-6	2	0	1	0	0	8.9
at Wake Forest*	37	8-10	0-0	2-2	3-1-4	2	0	2	2	0	18.9
at Pitt*	33	4-7	0-0	2-2	3-5-8	3	0	3	1	0	10.9
GEORGIA TECH*	22	5-5	0-0	1-2	2-4-6	2	0	1	1	0	11.9
SYRACUSE*	27	5-11	0-0	0-0	7-4-11	2	1	1	0	0	10.9
at Virginia Tech*	24	4-6	0-0	0-0	2-5-7	2	0	1	0	0	8.9
at Virginia*	34	7-10	0-0	1-1	4-1-5	3	2	2	1	0	15.0
at SMU*	28	4-5	0-0	6-6	4-0-4	2	2	2	3	1	14.0
NOTRE DAME											
CAL											
STANFORD											
at Florida State											
at Duke											
NORTH CAROLINA											
CLEMSON											
at Notre Dame											

Junior Year (2024-25)

- Scored 14 points after 4-for-5 shooting from the field and 6-for-6 from the line and tied season highs with three steals and two assists in the road win over SMU
- Scored 15 points on 7-for-10 shooting to go with five rebounds, two assists and a steal in the road win over Virginia
- Tallied a double-double with 10 points and a season-best 11 rebounds in the win over Syracuse
- Scored 11 points and was 5-for-5 from the field with six rebounds in the win over #13 Georgia Tech
- Led the team with eight rebounds to go with 10 points in the road win over Pitt
- Recorded a season-high 18 points on 8-for-10 shooting to lead the team with four rebounds and two steals in the win at Wake Forest
- Scored 12 points on 5-for-6 shooting with five rebounds in the road win over Boston College
- Tallied her first double-double of the season with 14 points and 10 rebounds on 6-for-7 shooting against Grambling State
- Recorded 10 points to go with six rebounds, three steals, two blocks and two assists against #11 Oklahoma
- Had a team-best 14 points and four rebounds to go with three steals, two assists and a block in the road win over Colorado
- Led the team with a season-best nine rebounds and had eight points on 3-for-3 shooting against South Florida
- Scored eight points and brought in three rebounds in just 10 minutes of action vs. Morehead State
- Led the team with 16 points on 6-of-8 shooting in the road win over UT Martin
- 2025 Leslie Award Watch List

Sophomore Year (2023-24)

- Finished the season with a team-best .563 field goal percentage, six double-doubles, tied for the team lead with 6.6 rebounds and was one of four players to score 10 points or more per game (10.4)
- Tallied a team-best 10 rebounds and nine points against No. 4 seed Notre Dame
- Led the team with 14 points and had nine rebounds in the win over Boston College
- Recorded her sixth double-double of the year with 11 points and a career-best 15 rebounds against Florida State
- Led the team with 17 points, had nine rebounds and tied a career high with two assists against Virginia
- Set a career high in points for the second-straight game with 22 points, 7-for-11 shooting from the floor and perfect 6-for-8 from the line, to go with 11 rebounds for her second-straight double-double on the road against No. 23 Syracuse
- Set a career high with 19 points and was 9-for-11 from the floor with 10 rebounds for her fourth double-double of the season in the win over #12/14 Notre Dame
- Had a career game with a career-best 14 rebounds and tied a career high with 18 points for her third double-double of the season in the win over #21/13 Syracuse. The 14 rebounds were the most by a Louisville player this season.
- Led the team with six rebounds and had eight points in the win over Pitt
- Tallied seven points on 2-for-2 shooting with six rebounds and tied a season high with three steals against Boston College
- Led the team with 18 points on 7-for-11 shooting and tied a season high with three steals on the road against #23/24 North Carolina
- Was perfect from the floor (5-for-5) for the second time this season and scored 10 points in the win over Wake Forest
- Hauled in a team-best six rebounds, tied a career high with two assists and had eight points in the road win over Pitt
- Recorded her second double-double of the season with 13 points and tied a career high with 12 rebounds against RV/23 Miami
- Scored in double figures with 11 points on 5-for-7 shooting in the win over #23 Washington
- Tallied 16 points on 6-of-9 shooting with nine rebounds in the win over Morehead State
- Scored 13 points on 6-of-9 shooting to go with a team-best eight

- rebounds and season-high three steals against Kentucky
- Tied a career high with 18 points and set a career high with eight field goals made and 34 minutes played against Alabama
- Tallied double-digit points for the third straight game with 10 points and added six rebounds against Bucknell
- Scored in double figures for the second-straight game with 14 points against Belarmine
- Tallied her first career double-double with 13 points and a team-high 11 rebounds in the win over DePaul

Freshman Year (2022-23)

- Played all 38 games in her freshman season and made 15 starts
- Scored eight or more points in six games and made eight or more rebounds in four games
- Set a career high with four steals, tied for the team lead with five rebounds and had eight points against No. 12 seed Drake
- Led the team with nine rebounds in the win over Wake Forest in the ACC Quarterfinals
- Earned her second career start and had a career-best 12 rebounds to lead the Cards in the win over North Carolina. The 12 rebounds are the most by a Louisville freshman since Olivia Cochran had 15 in the NCAA Tournament against Northwestern in 2021
- Had a team and career-high 18 points and a career-high three blocks to go with six rebounds in the road win over Syracuse. The 18 points were the most points scored by a Louisville freshman since 2021 when Hailey Van Lith scored 24 against Wake Forest on March 5, 2021
- Set a career high with a team-best 10 rebounds against Syracuse. She also tied a career high with two assists and added eight points
- Led the team in rebounding with a season-high nine in the win over SIUE. She also tied a season high with two steals and two blocks
- Scored in double figures in her second collegiate game against IUPUI. She tallied 11 points and added six rebounds
- Made her collegiate debut against Cincinnati and scored five points and grabbed two rebounds

High School

- A five-star prospect and is ranked No. 34 overall by espnW HoopGuriz and Prep Girls Hoops
- espnW HoopGuriz also ranks Harris as the eighth best forward in the 2022 class
- As a senior, averaged 17.8 points, 11.4 rebounds, 1.5 assists, 1.2 steals, and 1.1 blocked shots a game for a 26-5 team that won a state title and then lost to Sidwell Friends (D.C.) in the title game of the inaugural State Champions Invitational
- As a junior, Harris helped Lake Highland Prep to the Class 4-A state title in Florida
- Named the MaxPreps Player of the Year as a sophomore after averaging 11.3 points and 6.2 rebounds per game
- Tallied 20 points, five rebounds and three blocks to lead Lake Highland Prep to a Florida 4A State Championship as a sophomore
- Named to the 2022 Naismith High School Trophy Underclassmen Girls Watch List
- Chose Louisville over Florida State, North Carolina, North Carolina State, and Georgia Tech

NYLA HARRIS CAREER STATISTICS

SEASON	TEAM	GP-GS	MIN/AVG	Field Goals		3-Point			F-Throws		Rebounds				Scoring					
				FG-FGA	FG%	3FG-3FGA	3FG%	FT-FTA	FT%	OFF	DEF	TOT	AVG	PF-FO	A	TO	BLK	STL	PTS	AVG
2022-23	LOU	38-15	516/13.6	67-132	.508	0-0	.000	25-49	.510	56	79	135	3.6	54-0	13	39	12	17	159	4.2
2023-24	LOU	34-34	920/27.1	138-245	.563	0-1	.000	78-107	.729	99	125	224	6.6	79-2	25	63	7	31	354	10.4
2024-25	LOU	21-21	530/25.3	90-148	.608	0-0	.000	34-46	.739	62	54	116	5.5	46-2	15	42	8	21	214	10.2
TOTAL		93-70	1966/21.1	295-525	.562	0-1	.000	137-202	.678	217	258	475	5.1	179-4	53	144	27	69	727	7.8



4 MACKENLY RANDOLPH

Forward | 6-0 | Freshman
 Los Angeles, Calif. | Sierra Canyon

SEASON HIGHS		MISC STATS	
		Season	Career
Points.....	9 at Memphis (12/21/24)	Double-Doubles.....	0
Reb.....	4 (2x), MR vs. UConn (12/7/24)	10-Plus Points.....	0
Asst.....	4 at Memphis (12/21/24)	20-Plus Points.....	0
Blocks.....	1 (2x), MR vs. UConn (12/7/24)	30-Plus Points.....	0
Steals.....	2 (2x), MR at SMU (1/30/25)	Team-High Points.....	0
FGM.....	4 vs. Memphis (12/21/24)	10-Plus Rebounds.....	0
FGA.....	6 at Kentucky (11/18/24), vs. UCLA (11/4/24)	Team-High Rebounds.....	0
3FGM.....	1 vs. USI (11/8/24)	10-Plus Assists.....	0
3FGA.....	4 vs. UCLA (11/4/24)	Team-High Assists.....	0
FT.....	2 (4x), MR at SMU (1/30/25)		
FTA.....	4 (2x), MR vs. NC State (12/15/24)		
Minutes.....	24 vs. UConn (12/7/24)		

2024-25 GAME-BY-GAME

Opponent	Min	FG-A	3PT-A	FT-A	O-D-T	PF	AST	TO	STL	BLK	PTS	AVG
vs. UCLA*	18	1-6	0-4	0-0	1-2-3	2	3	1	1	0	2	2.0
SOUTHERN INDIANA*	18	2-5	1-3	0-0	1-1-2	3	2	4	2	0	5	3.5
at UT Martin*	12	1-3	0-0	2-4	1-3-4	3	1	3	0	0	4	3.7
at Kentucky*	15	3-6	0-2	2-2	0-0-0	1	0	0	0	1	8	4.8
MOREHEAD ST.*	10	2-2	0-0	0-0	0-0-0	0	1	0	1	0	4	4.6
vs. USF*	13	3-5	0-0	0-0	1-0-1	0	0	1	0	0	6	4.8
at Colorado*	9	2-3	0-0	1-2	2-0-2	1	0	1	0	0	5	4.9
OKLAHOMA*	9	2-4	0-0	0-0	1-1-2	1	0	1	1	0	4	4.8
vs. UConn*	24	1-4	0-1	0-0	3-1-4	1	2	1	1	1	2	4.4
GRAMBLING ST.	20	1-5	0-2	0-0	0-2-2	2	2	0	1	0	2	4.2
NC STATE	13	0-1	0-1	1-4	1-0-1	2	0	1	1	0	1	3.9
at Memphis	14	4-5	0-1	1-2	0-1-1	2	4	1	0	0	9	4.3
at Boston College	14	2-2	0-0	1-2	1-1-2	2	1	0	1	0	5	4.4
MIAMI	14	0-2	0-1	0-0	1-2-3	1	2	2	0	0	0	4.1
at Wake Forest	7	0-0	0-0	2-2	1-0-1	1	0	3	1	0	2	3.9
at Pitt	5	0-1	0-1	0-0	0-2-2	1	0	2	0	0	0	3.7
GEORGIA TECH												--DNP--
SYRACUSE	3	0-1	0-0	0-0	0-0-0	0	0	0	0	0	0	3.5
at Virginia Tech	1	0-1	0-0	0-0	0-0-0	0	0	0	0	0	0	3.3
at Virginia	5	0-0	0-0	0-0	1-0-1	1	0	1	1	0	0	3.1
at SMU	11	1-2	0-0	2-2	0-0-0	2	1	1	2	0	4	3.2
NOTRE DAME												
CAL												
STANFORD												
at Florida State												
at Duke												
NORTH CAROLINA												
CLEMSON												
at Notre Dame												

Freshman Year (2024-25)

- Scored a season-best nine points on 4-for-5 shooting and had four assists against Memphis
- Tied a season high with four rebounds against #2 UConn
- Scored eight points and had a block on the road against #20 Kentucky
- Earned a start in her first collegiate appearance against #5/#6 UCLA

Prep and Personal

- 2024 Third Team Naismith Trophy All-American
- 2024 McDonald's All-American
- Played in the 2024 Jordan Brand Classic with Arenas and Roberts
- Played with the USA Basketball Women's U17 National Team and won the gold medal at the U17 FIBA World Cup
- Competed with USA Basketball at the 2024 Women's Nike Hoop Summit
- Five-star prospect ranked No. 23 by espnW HoopGurlz
- She chose the Cardinals over Notre Dame and Michigan State
- While playing for Sierra Canyon, Randolph won a CIF Open Division championship, a CIF State Open Division championship, an ESPN national championship and four league championships
- She holds the program record for points all-time lead in points and rebounds
- During her junior season at Sierra Canyon, the team was ranked No. 1 in the country
- Daughter of former NBA All-Star Zach Randolph

MACKENLY RANDOLPH CAREER STATISTICS

SEASON	TEAM	GP-GS	MIN/AVG	Field Goals		3-Point		F-Throws		Rebounds				Scoring						
				FG-FGA	FG%	3FG-3FGA	3FG%	FT-FTA	FT%	OFF	DEF	TOT	AVG	PF	FO	A	TO	BLK	STL	PTS
2024-25	LOU	20-9	236/11.8	25-58	.431	1-16	.063	12-20	.600	15	16	31	1.6	26-0	19	23	2	13	63	3.2
TOTAL		20-9	236/11.8	25-58	.431	1-16	.063	12-20	.600	15	16	31	1.6	26-0	19	23	2	13	63	3.2



9 ANAYA HARDY

Forward | 6-3 | Freshman
 Detroit, Mich. | Renaissance

SEASON HIGHS		MISC STATS	
		Season	Career
Points.....	4 vs. Morehead State (11/21/24)	Double-Doubles.....	0
Reb.....	2 vs. Morehead State (11/21/24)	10-Plus Points.....	0
Asst.....		20-Plus Points.....	0
Blocks.....		30-Plus Points.....	0
Steals.....		Team-High Points.....	0
FGM.....	2 vs. Morehead State (11/21/24)	10-Plus Rebounds.....	0
FGA.....	4 vs. Morehead State (11/21/24)	Team-High Rebounds.....	0
3FGM.....		10-Plus Assists.....	0
3FGA.....		Team-High Assists.....	0
FT.....	1 vs. NC State (12/15/24)		
FTA.....	2 (3x), MR vs. NC State (12/15/24)		
Minutes.....	6 vs. Morehead State (11/21/24)		

2024-25 GAME-BY-GAME														
Opponent	Min	FG-A	3PT-A	FT-A	O-D-T	PF	AST	TO	STL	BLK	PTS	AVG		
vs. UCLA														
SOUTHERN INDIANA	5	1-1	0-0	0-0	1-0-1	0	0	1	0	0	2	2.0		
at UT Martin	3	1-3	0-0	0-2	1-0-1	1	0	0	0	0	2	2.0		
at Kentucky														
MOREHEAD ST.	6	2-4	0-0	0-2	0-2-2	0	0	0	0	0	4	2.7		
vs. USF	1	0-0	0-0	0-0	0-0-0	0	0	0	0	0	0	2.0		
at Colorado														
OKLAHOMA														
vs. UConn	4	0-0	0-0	0-0	0-0-0	0	0	0	0	0	0	1.6		
GRAMBLING ST.	3	0-0	0-0	0-0	0-0-0	0	0	0	0	0	0	1.3		
NC STATE	2	0-0	0-0	1-2	1-0-1	0	0	0	0	0	1	1.3		
at Memphis														
at Boston College														
MIAMI														
at Wake Forest														
at Pitt	1	0-0	0-0	0-0	0-0-0	0	0	0	0	0	0	1.1		
GEORGIA TECH														
SYRACUSE														
at Virginia Tech														
at Virginia														
at SMU														
NOTRE DAME														
CAL														
STANFORD														
at Florida State														
at Duke														
NORTH CAROLINA														
CLEMSON														
at Notre Dame														

Freshman Year (2024-25)

- Made her collegiate debut against USI

Prep and Personal

- 2024 AP First Team All-State
- 2024 MLive's Metro Detroit Dream Team
- 2024 Detroit Free Press First Team All-Area
- Scored 28 points and hauled in 12 rebounds in the Detroit Public School Championship Game, the third-straight PSL championship for Renaissance
- She averaged 13 points, 10 rebounds and four blocks per game in her senior season
- Tallied a triple-double (20 points, 17 rebounds, 11 blocks) in a win over Macomb Dakota
- Led Renaissance to a 24-2 record and a trip to the state semifinals in her junior season

ANAYA HARDY CAREER STATISTICS

SEASON	TEAM	GP-GS	MIN/AVG	Field Goals		3-Point		F-Throws		Rebounds				Scoring						
				FG-FGA	FG%	3FG-3FGA	3FG%	FT-FTA	FT%	OFF	DEF	TOT	AVG	PF-FO	A	TO	BLK	STL	PTS	AVG
2024-25	LOU	8-0	23/2.8	4-8	.500	0-0	.000	1-6	.167	3	2	5	0.6	1-0	0	1	0	0	9	1.1
TOTAL		8-0	23/2.8	4-8	.500	0-0	.000	1-6	.167	3	2	5	0.6	1-0	0	1	0	0	9	1.1



10 ESEOSA IMAFIDON

Center | 6-5 | Redshirt Freshman
Benin-City, Nigeria | Proctor Academy

SEASON HIGHS	
Points.....	4 vs. Morehead State (11/21/24)
Reb.....	6 vs. Morehead State (11/21/24)
Asst.....	1 vs. Morehead State (11/21/24)
Blocks.....	3 vs. Morehead State (11/21/24)
Steals.....	
FGM.....	2 (2x), MR vs. Morehead State (11/21/24)
FGA.....	3 vs. Morehead State (11/21/24)
3FGM.....	
3FGA.....	
FT.....	1 vs. UT Martin (11/12/24)
FTA.....	2 vs. UT Martin (11/12/24), vs. USI (11/8/24)
Minutes.....	6 vs. Morehead State (11/21/24)

MISC STATS	Season	Career
Double-Doubles.....	0	0
10-Plus Points.....	0	0
20-Plus Points.....	0	0
30-Plus Points.....	0	0
Team-High Points.....	0	0
10-Plus Rebounds.....	0	0
Team-High Rebounds.....	1	1
10-Plus Assists.....	0	0
Team-High Assists.....	0	0

2024-25 GAME-BY-GAME

Opponent	Min	FG-A	3PT-A	FT-A	O-D-T	PF	AST	TO	STL	BLK	PTS	AVG
vs. UCLA												
SOUTHERN INDIANA	5	0-0	0-0	0-2	1-1-2	1	0	1	0	2	0	0.0
at UT Martin	2	0-0	0-0	1-2	2-0-2	0	0	0	0	0	1	0.5
at Kentucky												
MOREHEAD ST.	6	2-3	0-0	0-1	3-3-6	0	1	0	0	3	4	1.7
vs. USF												
at Colorado												
OKLAHOMA												
vs. UConn	4	0-1	0-0	0-0	1-0-1	0	0	0	0	0	0	1.3
GRAMBLING ST.	1	0-0	0-0	0-0	0-0-0	0	0	0	0	0	0	1.0
NC STATE												
at Memphis												
at Boston College												
MIAMI												
at Wake Forest												
at Pitt	2	0-0	0-0	0-0	0-0-0	0	0	0	0	0	0	0.8
GEORGIA TECH												
SYRACUSE												
at Virginia Tech												
at Virginia												
at SMU												
NOTRE DAME												
CAL												
STANFORD												
at Florida State												
at Duke												
NORTH CAROLINA												
CLEMSON												
at Notre Dame												

Redshirt-Freshman Year (2024-25)

- Led the team in rebounds with six to go with four points and three blocks in just six minutes against Morehead State
- Made her collegiate debut against USI

Freshman Year (2023-24)

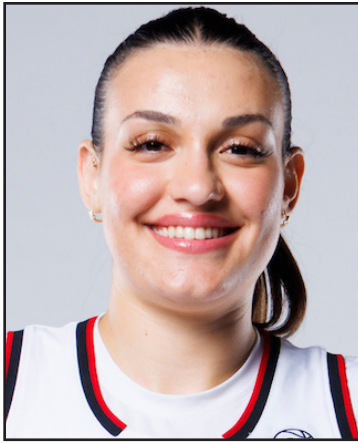
- She was a redshirt her first year at Louisville

Prep and Personal

- Played most recently at Proctor Academy
- Helped led Proctor to a 14-7 in the NEPSAC Class AA League, one of the best prep leagues in New England
- Prior to her time at Proctor, she was at Matthews Covenant Day in Matthews, N.C.
- During the 2021-22 season, she averaged 14.1 points, 11.3 rebounds and 2.2 blocks per game
- Following the season, she earned second team NCSAA Girls' Varsity Basketball All-American honors
- She also spent time with Team Curry in Charlotte, N.C.
- Imafidon is originally from Nigeria and started playing basketball in 2019
- She came to the United States to play high school and prep basketball through the Access2Success Program

ESEOSA IMAFIDON CAREER STATISTICS

		Field Goals		3-Point		F-Throws		Rebounds				Scoring								
SEASON	TEAM	GP-GS	MIN/AVG	FG-FGA	FG%	3FG-3FGA	3FG%	FT-FTA	FT%	OFF	DEF	TOT	AVG	PF-FO	A	TO	BLK	STL	PTS	AVG
2024-25	LOU	6-0	20/3.4	2-4	.500	0-0	.000	1-5	.200	7	4	11	1.8	1-0	1	1	5	0	5	0.8
TOTAL		6-0	20/3.4	2-4	.500	0-0	.000	1-5	.200	7	4	11	1.8	1-0	1	1	5	0	5	0.8



11 ELIF ISTANBULLUOGLU

Forward | 6-3 | Sophomore
Istanbul, Türkiye | Fenerbahçe S.K.

SEASON HIGHS

Points..... 9 vs. Syracuse (1/16/25)
Reb..... 6 vs. UCLA (11/4/24)
Asst..... 4 vs. Morehead State (11/21/24)
Blocks.....
Steals 2 at Colorado (11/30/24)
FGM 3 (2x), MR vs. Syracuse (1/16/25)
FGA 6 vs. Syracuse (1/16/25)
3FGM..... 1 vs. Miami (1/2/25)
3FGA..... 3 vs. Oklahoma (12/4/24)
FT 3 (2x), MR vs. Syracuse (1/16/25)
FTA 4 (3x), MR vs. Syracuse (1/16/25)
Minutes..... 24 (3x), MR at Memphis (12/21/24)

CAREER HIGHS

Points..... 11 vs. Boston College (1/25/24)
Reb..... 12 vs. Bellarmine (11/16/23)
Asst..... 4 vs. Morehead State (11/21/24)
Blocks..... 1 (6x), MR vs. Boston College (3/7/24)
Steals 2 at Colorado (11/30/24)
FGM 5 vs. Boston College (1/25/24)
FGA 8 (2x), MR vs. Boston College (1/25/24)
3FGM..... 1 (7x), MR vs. Miami (1/2/25)
3FGA..... 5 vs. NC A&T (12/3/23)
FT 4 vs. DePaul (11/12/23)
FTA 4 (4x), MR vs. Syracuse (1/16/25)
Minutes..... 24 (2x), MR at Colorado (11/30/24)

MISC STATS

	Season	Career
Double-Doubles.....	0	1
10-Plus Points.....	0	2
20-Plus Points.....	0	0
30-Plus Points.....	0	0
Team-High Points.....	0	0
10-Plus Rebounds.....	0	1
Team-High Rebounds.....	0	1
10-Plus Assists.....	0	0
Team-High Assists.....	0	0

2024-25 GAME-BY-GAME

Opponent	Min	FG-A	3PT-A	FT-A	O-D-T	PF	AST	TO	STL	BLK	PTS	AVG
vs. UCLA	16	1-2	0-1	0-0	2-4-6	0	0	0	1	0	2	2.0
SOUTHERN INDIANA	9	2-3	0-0	0-0	2-2-4	2	0	0	0	0	4	3.0
at UT Martin	16	2-4	0-1	0-0	0-2-2	2	0	2	0	0	4	3.3
at Kentucky	17	2-4	0-0	0-0	0-2-2	2	0	1	1	0	4	3.5
MOREHEAD ST.	24	2-4	0-2	2-2	1-4-5	3	4	2	1	0	6	4.0
vs. USF	13	1-1	0-0	0-0	0-0-0	2	0	2	0	0	2	3.7
at Colorado	24	2-4	0-1	1-2	2-0-2	0	1	2	2	0	5	3.9
OKLAHOMA	12	0-3	0-3	3-4	1-4-5	3	0	0	0	0	3	3.8
vs. UConn	11	1-3	0-1	0-0	0-0-0	0	0	0	0	0	2	3.6
GRAMBLING ST.	16	2-3	0-0	1-4	0-0-0	2	0	2	1	0	5	3.7
NC STATE	12	1-2	0-1	0-0	0-2-2	0	0	0	1	0	2	3.5
at Memphis	24	3-5	0-0	0-0	0-4-4	1	1	1	0	0	6	3.8
at Boston College	5	0-0	0-0	0-0	0-0-0	0	0	2	0	0	0	3.5
MIAMI	15	2-3	1-2	0-0	0-0-1	1	0	2	1	0	5	3.6
at Wake Forest	8	0-3	0-1	0-0	0-1-1	4	1	1	0	0	0	3.3
at Pitt	14	2-4	0-2	0-1	2-1-3	1	0	1	1	0	4	3.4
GEORGIA TECH	14	2-2	0-0	0-0	1-0-1	1	0	2	0	0	4	3.4
SYRACUSE	18	3-6	0-1	3-4	1-1-2	2	1	2	0	0	9	3.7
at Virginia Tech	12	1-1	0-0	0-0	1-0-1	0	0	0	0	0	2	3.6
at Virginia	5	0-1	0-0	0-0	0-0-0	0	0	0	0	0	0	3.5
at SMU	13	1-4	0-0	0-0	1-1-2	1	1	2	0	0	2	3.4
NOTRE DAME												
CAL												
STANFORD												
at Florida State												
at Duke												
NORTH CAROLINA												
CLEMSON												
at Notre Dame												

Sophomore Year (2024-25)

- Set a season high with nine points in the win over Syracuse
- Tied a season high with six points against Memphis
- Set a career high with four assists to go with six points and five rebounds against Morehead State

Summer (2024)

- Played with Türkiye at the U20 FIBA Eurobasket in Lithuania and Coach Walz was an assistant on the staff.
- She averaged 16.3 points, 6.6 rebounds and shot .447 percent from the floor as Türkiye finished seventh.
- She was named a 'Player Who Impressed' by FIBA following the tournament.

Freshman Year (2023-24)

- Played in all 34 games and made two starts in her first season with the Cardinals.
- Scored seven points and hit one three-pointer in her first career NCAA Tournament game against Middle Tennessee.
- Earned her first career start in the road win over Georgia Tech.
- Tallied a career high 11 points on 5-for-8 shooting with four rebounds against Boston College.
- Scored nine points, was 4-for-5 from the floor and 1-for-1 from behind the arc with four rebounds in the win over Wake.
- Tallied her first double-double in just her third collegiate game with 10 points and 12 rebounds in the win over Bellarmine. She was the first freshman to record a double-double since 2021.
- Made her collegiate debut against Cincinnati on Nov. 6 and tallied seven points, three rebounds, one block and one steal.

Prep

- Played with Turkey at the 2023 FIBA U18 and U20 Championships this summer
- At the U18 Championships, she helped Turkey reach the quarterfinals and finished eighth
- She averaged 11.0 points and 10.7 rebounds per game, which was second on the team in scoring and she led the team in rebounds
- At the U20 Championships, Turkey finished eighth and she averaged double figures with 10.7 points per game during the tournament
- She played in the most recent FIBA EuroLeague season with Fenerbahçe S.K.
- Fenerbahçe S.K. won the EuroLeague for the first time in team history

ELIF ISTANBULLUOGLU CAREER STATISTICS

		Field Goals		3-Point		F-Throws		Rebounds				Scoring								
SEASON	TEAM	GP-GS	MIN/AVG	FG-FGA	FG%	3FG-3FGA	3FG%	FT-FTA	FT%	OFF	DEF	TOT	AVG	PF-FO	A	TO	BLK	STL	PTS	AVG
2023-24	LOU	34-2	431/12.7	34-91	.374	6-27	.222	16-24	.667	27	49	76	2.2	33-0	13	29	6	5	90	2.6
2024-25	LOU	21-0	298/14.2	30-62	.484	1-16	.063	10-17	.588	14	28	42	2.0	27-0	10	23	0	8	71	3.4
TOTAL		55-2	729/13.3	64-153	.418	7-43	.163	26-41	.634	41	77	118	2.1	60-0	23	52	6	13	161	2.9



12 JA'LEAH WILLIAMS

Guard | 5-9 | Senior
Pompano Beach, Fla. | Blanche Ely | Miami

SEASON HIGHS	
Points.....	13 vs. Georgia Tech (1/12/25)
Reb.....	10 vs. Syracuse (1/16/25)
Asst.....	9 vs. UCLA (11/4/24)
Blocks.....	1 (6x), MR at SMU (1/30/25)
Steals.....	4 (2x), MR vs. Miami (1/2/25)
FGM.....	5 (4x), MR at Virginia Tech (1/12/25)
FGA.....	11 (3x), MR vs. Georgia Tech (1/12/25)
3FGM.....	2 vs. Morehead State (11/21/24)
3FGA.....	2 (4x), MR vs. Georgia Tech (1/12/25)
FT.....	4 vs. USI (11/8/24)
FTA.....	6 (2x), MR at Boston College (12/29/24)
Minutes.....	40 (2x), MR vs. Georgia Tech (1/12/25)

CAREER HIGHS	
Points.....	28 vs. Columbia (11/27/22)*
Reb.....	12 vs. Virginia Tech (3/8/24)*
Asst.....	9 vs. UCLA (11/4/24)
Blocks.....	2 vs. Clemson (2/16/23)*
Steals.....	7 vs. Jackson St. (12/20/23)*
FGM.....	10 vs. Columbia (11/27/22)*
FGA.....	14 vs. Columbia (11/27/22)*
3FGM.....	3 vs. North Carolina (3/7/24)*
3FGA.....	7 vs. North Carolina (3/7/24)*
FT.....	11 vs. Columbia (11/27/22)*
FTA.....	11 vs. Columbia (11/27/22)*
Min.....	40 (3x), MR vs. Georgia Tech (1/12/25)

MISC STATS	Season	Career*
Double-Doubles.....	1	1
10-Plus Points.....	6	30
20-Plus Points.....	0	1
30-Plus Points.....	0	0
Team-High Points.....	0	5
10-Plus Rebounds.....	1	3
Team-High Rebounds.....	4	14
10-Plus Assists.....	0	0
Team-High Assists.....	11	48

* at Louisville & Miami

2024-25 GAME-BY-GAME

Opponent	Min	FG-A	3PT-A	FT-A	O-D-T	PF	AST	TO	STL	BLK	PTS	AVG
vs. UCLA*	27	4-9	0-1	3-4	3-4-7	3	9	5	4	0	11	11.0
SOUTHERN INDIANA*	16	0-1	0-0	4-6	2-4-6	3	4	1	2	0	4	7.5
at UT Martin*	23	4-4	0-0	1-1	1-2-3	1	1	3	2	1	9	8.0
at Kentucky*	40	4-11	0-1	1-2	2-3-5	3	6	5	0	1	9	8.3
MOREHEAD ST.*	14	2-2	2-2	0-0	0-0-0	0	8	2	1	0	6	7.8
vs. USF*	21	2-7	0-1	0-0	1-1-2	2	7	2	0	0	4	7.2
at Colorado*	9	1-3	0-2	0-0	0-0-0	3	1	0	0	0	2	6.4
OKLAHOMA*	23	0-3	0-0	0-2	3-2-5	1	2	3	1	0	0	5.6
vs. UConn*	18	0-4	0-1	3-4	2-4-6	3	1	1	2	0	3	5.3
GRAMBLING ST.*	16	3-6	0-0	0-0	0-0-0	3	4	2	2	1	6	5.4
NC STATE*	15	1-2	0-0	2-4	2-3-5	3	0	2	1	0	4	5.3
at Memphis*	27	3-3	0-0	0-0	2-1-3	3	7	2	3	0	6	5.8
at Boston College*	25	5-7	0-0	2-6	3-3-6	3	2	1	2	0	12	5.8
MIAMI*	32	4-8	0-2	0-0	2-5-7	1	7	2	4	1	8	6.0
at Wake Forest*	28	1-6	0-1	0-0	2-1-3	2	4	2	2	0	2	5.7
at Pitt*	23	5-11	0-1	1-2	2-3-5	4	2	2	2	0	11	6.1
GEORGIA TECH*	40	5-11	1-2	2-4	4-3-7	3	3	3	3	0	13	6.5
SYRACUSE*	32	4-7	0-0	3-5	1-9-10	2	7	3	2	0	11	6.7
at Virginia Tech*	30	5-9	0-0	2-4	1-4-5	3	4	3	1	0	12	7.0
at Virginia*	27	0-4	0-0	3-4	2-3-5	1	3	1	0	1	3	6.8
at SMU*	19	0-0	0-0	0-0	0-0-0	0	3	2	1	1	0	6.5
NOTRE DAME												
CAL												
STANFORD												
at Florida State												
at Duke												
NORTH CAROLINA												
CLEMSON												
at Notre Dame												

Louisville - Senior Year (2024-25)

- Scored 12 points, recorded five rebounds and led the team with four assists against Virginia Tech
- Recorded her first career double-double with 11 points and a season-high 10 rebounds to go with a team-best seven assists and two steals in the win over Syracuse
- Led the Cards with seven rebounds to go with 13 points, tied a season high with 5-for-11 shooting and had three assists and three steals in the win against #13 Georgia Tech
- Scored 11 points and tied a season high with five field goals to go with five rebounds, two assists and two steals in the road win over Pitt
- Had a team-best seven assists, seven rebounds and four steals to go with eight points in the win over Miami
- Scored a season-best 12 points on 5-for-7 shooting with six rebounds, two assists and two steals in the win over Boston College
- Led the team with seven assists to go with six points, three rebounds and three steals in the win over Memphis
- Had a team-best four assists to go with six points and two steals against Grambling State
- Led the team with six rebounds against #2 UConn
- Had a team-best seven assists in the win over South Florida
- Led the team with eight assists and had six points and two three-pointers against Morehead State
- Tallied nine points to go with a team-best six assists and five rebounds against #20 Kentucky
- Scored nine points on 4-for-4 shooting in the road win over UT Martin
- Led the team with four assists and had six rebounds, four points and two steals against Southern Indiana
- Set a career high with nine assists to go with 11 points, team-high seven rebounds and four steals against #5/#6 UCLA

Williams transferred to Louisville ahead of the 2024-25 season after playing three years at Miami (FL)

Miami - Junior Year (2023-24)

- She averaged 7.1 points per game (fourth-best on the team), was second on the squad with 2.7 assists per game and third with 4.5 rebounds per game in her junior year
- Was critical in the win against Duke Jan. 28, scoring 16 points to go with seven rebounds
- Played a big part in Miami's 60-59 win against UNC in the ACC Tournament Second Round, posting 11 points and seven rebounds
- Set a career high with 12 boards against Virginia Tech March 8
- Came up just short of a double-double in an overtime win against Clemson Feb. 8, posting 11 points and nine rebounds
- Was a consummate distributor in the win against Fordham Nov. 12, tallying seven points, eight assists and three steals
- Started a streak of four-straight double-digit scoring games Dec. 20, posting seven steals and 12 points in the win against Jackson State
- Tallied her non-conference high for points with 14 on 6-for-7 shooting against Alabama State Dec. 28
- Scored four of her 11 points at the line against Louisville Dec. 31

- Grabbed eight boards and scored 10 points at No. 11 Virginia Tech Jan. 11

Miami - Sophomore Year (2022-23)

- Started all 35 games played
- Averaged 6.5 points, 3.1 rebounds, 2.7 assists and 1.2 steals per game
- Led the Hurricanes in total assists with 93
- Reached double-figure points on eight occasions as a sophomore
- Poured in a career-high 28 points on 10 made field goals against Columbia (11/27)
- Recorded multiple steals in 11 games, including a season-high five against UMES (11/7)

Miami - Freshman Year (2021-22)

- Started 28 of 34 games played as a freshman
- Was the only freshman to start a game this season
- Led the Hurricanes in steals (65)
- Ranked third on the team in points per game (7.3) and rebounds per game (4.1)
- Totaled nine double-digit outings
- Led all Hurricanes in field goal percentage (minimum 200 attempts) with a .416 clip
- Ranked in the top five among ACC freshmen in steals (first), rebounding (third), scoring (fourth) and assists (fourth), one of just two league rookies to do so
- Finished the season third among ACC players in total steals (65)
- Tallied multiple steals in 17 of 34 games
- Posted a career-best six steals and seven assists against Arkansas-Pine Bluff (12/6)
- Reached double-digit rebounding numbers for the first time in her career with 10 at Wake Forest

Prep and Personal

- Attended Blanche Ely High School
- Named the Sun Sentinel Broward County Class 7A-6A Player of the Year in 2019-20
- Earned a spot on the Miami Herald's First Team and Sun Sentinel's First Team for two years straight
- As a senior, served as team captain, led her team to its first state championship since 1992
- Totaled 10 points, five rebounds and four assists in the title game
- As a junior, averaged 18.0 points, eight assists, seven rebounds and five steals per game
- Honor Roll member every year of high school
- Parents are Jessica and George
- Enjoys running track
- Hopes to become a manager, physical therapist or athletic trainer

JA'LEAH WILLIAMS CAREER STATISTICS

SEASON	TEAM	GP-GS	MIN/AVG	Field Goals		3-Point		F-Throws		Rebounds				Scoring						
				FG-FGA	FG%	3FG-3FGA	3FG%	FT-FTA	FT%	OFF	DEF	TOT	AVG	PF-FO	A	TO	BLK	STL	PTS	AVG
2021-22	UM	34-28	915/26.9	97-233	.416	5-30	.167	49-70	.700	60	80	140	4.1	59-0	75	69	7	65	248	7.3
2022-23	UM	35-35	862/24.6	93-230	.404	6-28	.214	37-56	.661	38	69	107	3.1	69-0	93	91	7	43	229	6.5
2023-24	UM	30-18	837/27.9	83-195	.426	17-53	.321	29-44	.659	37	99	136	4.5	59-0	82	71	5	50	212	7.1
2024-25	LOU	21-21	506/24.1	53-118	.449	3-14	.214	27-48	.563	35	55	90	4.3	47-0	85	47	6	35	136	6.5
TOTAL FOR LOU		21-21	506/24.1	53-118	.449	3-14	.214	27-48	.563	35	55	90	4.3	47-0	85	47	6	35	136	6.5
TOTAL		120-102	3120/26.0	326-776	.420	31-125	.248	142-218	.651	170	303	473	3.9	234-0	335	278	25	193	825	6.9



13 MERISSAH RUSSELL

Guard | 6-0 | Graduate
Ottawa, Ontario | Cairine Wilson

SEASON HIGHS

Points..... 14 vs. Oklahoma (12/4/24)
 Reb..... 5 (3x), MR at Virginia Tech (1/19/25)
 Asst..... 4 (3x), MR vs. Georgia Tech (1/12/25)
 Blocks..... 1 (3x), MR vs. NC State (12/15/24)
 Steals..... 3 vs. USI (11/8/24)
 FGM..... 5 vs. Oklahoma (12/4/24)
 FGA..... 11 vs. Oklahoma (12/4/24)
 3FGM..... 4 vs. Oklahoma (12/4/24)
 3FGA..... 8 vs. Oklahoma (12/4/24)
 FT..... 7 at Boston College (12/29/24)
 FTA..... 8 at Boston College (12/29/24)
 Minutes..... 30 at Wake Forest (1/5/25)

CAREER HIGHS

Points..... 14 vs. Oklahoma (12/4/24)
 Reb..... 8 at Virginia (2/9/23)
 Asst..... 4 (6x), MR vs. Georgia Tech (1/12/25)
 Blocks..... 1 (10x), MR vs. NC State (12/15/24)
 Steals..... 3 (3x), MR vs. USI (11/8/24)
 FGM..... 5 (3x), MR vs. Oklahoma (12/4/24)
 FGA..... 11 (2x, MR vs. Oklahoma (12/4/24)
 3FGM..... 4 vs. Oklahoma (12/4/24)
 3FGA..... 8 (3x), MR vs. Oklahoma (12/4/24)
 FT..... 7 at Boston College (12/29/24)
 FTA..... 8 at Boston College (12/29/24)
 Minutes..... 30 at Wake Forest (1/5/25)

MISC STATS

	Season	Career
Double-Doubles.....	0	0
10-Plus Points.....	2	11
20-Plus Points.....	0	0
30-Plus Points.....	0	0
Team-High Points.....	0	0
10-Plus Rebounds.....	0	0
Team-High Rebounds.....	0	2
10-Plus Assists.....	0	0
Team-High Assists.....	3	5

2024-25 GAME-BY-GAME

Opponent	Min	FG-A	3PT-A	FT-A	O-D-T	PF	AST	TO	STL	BLK	PTS	AVG
vs. UCLA	18	1-4	0-3	0-0	1-3-4	1	0	0	2	1	2	2.0
SOUTHERN INDIANA	15	3-5	3-5	0-0	1-2-3	0	1	0	3	0	9	5.5
at UT Martin	13	1-3	0-2	4-4	2-0-2	1	3	0	0	0	6	5.7
at Kentucky	25	3-8	1-4	0-0	0-2-2	5	3	0	1	0	7	6.0
MOREHEAD ST.	9	0-0	0-0	1-2	0-1-1	0	0	1	0	0	1	5.0
vs. USF	6	0-1	0-0	0-0	1-1-2	2	1	0	0	0	0	4.2
at Colorado	13	1-2	0-1	4-4	1-1-2	0	1	1	1	1	6	4.4
OKLAHOMA	26	5-11	4-8	0-0	1-3-4	3	2	0	2	0	14	5.6
vs. UConn	16	3-6	1-4	1-1	0-1-1	2	1	1	2	0	8	5.9
GRAMBLING ST.*	18	1-5	1-4	0-0	0-3-3	0	4	1	2	0	3	5.6
NC STATE*	28	1-7	0-4	0-0	2-3-5	2	1	2	0	1	2	5.3
at Memphis*	18	0-0	0-0	2-3	1-0-1	0	1	2	1	0	2	5.0
at Boston College	22	2-6	0-2	7-8	2-1-3	3	2	0	2	0	11	5.5
MIAMI	13	1-3	1-2	0-0	1-2-3	2	2	0	0	0	3	5.3
at Wake Forest	30	3-6	2-4	0-0	0-1-1	4	4	3	2	0	8	5.5
at Pitt	23	2-6	1-5	0-0	1-2-3	1	3	0	1	0	5	5.4
GEORGIA TECH	22	2-6	0-3	2-2	2-3-5	0	4	2	1	0	6	5.5
SYRACUSE	15	2-6	0-1	0-0	3-1-4	1	0	2	2	0	4	5.4
at Virginia Tech	20	4-9	0-2	1-3	4-1-5	3	1	0	0	0	9	5.6
at Virginia	5	1-1	0-0	0-0	1-1-2	0	0	1	0	0	2	5.4
at SMU	12	1-2	0-1	0-0	0-2-2	4	0	0	0	0	2	5.2
NOTRE DAME												
CAL												
STANFORD												
at Florida State												
at Duke												
NORTH CAROLINA												
CLEMSON												
at Notre Dame												

Graduate Year (2024-25)

- Tied a season high with five rebounds and nine points against Virginia Tech
- Tied a career high with four assists and tied a season high with five rebounds with six points in the win over #13 Georgia Tech
- Tied a career high with a team-leading four assists to go with eight points and two steals in a career-best 30 minutes in the win at Wake Forest
- Scored 11 points and set a career high with seven free throws made with three rebounds, two assists and two steals in the win over Boston College
- Tied a career high with a team-best four assists against Grambling State
- Set a career high with 14 points and four three-pointers against #11 Oklahoma
- Tied a career high with three steals and three 3-pointers against Southern Indiana

Senior Year (2023-24)

- Played in all 34 games and made two starts in her senior season with the Cardinals.
- Led the team and tied a career high with four assists to go with nine points, five rebounds, two steals and a block against Middle Tennessee.
- Tied a career high with three steals and had a season-high six rebounds against Virginia.
- Earned her first career start in the road win over Georgia Tech.
- Tied a career high with a team-best four assists to go with seven points in the win over #12/14 Notre Dame.
- Scored nine points, tied a season high with four field goals made and two steals in the home win over Pitt.
- Scored in double figures for the third time against an ACC opponent with 10 points, 2-for-3 from behind the arc and tallied a season and team-best five rebounds in the win over Wake.
- Tallied double-figures points for the second-straight game with 10 points, two rebounds and two steals in the win over Duke.
- Scored a season-best 12 points and was 3-for-3 from the floor and from three in the win over #RV/23 Miami. She tied a career high with three three-pointers made and scored 11 of her 12 points in the fourth quarter.
- Tied a career high with three made three-pointers and tied a season high with 11 points to go with three rebounds, three assists, a steal and a block in a career-best 27 minutes against NC A&T.
- Scored nine points and added three rebounds, an assist and a steal in the win over Gonzaga.
- Tallied a career-best four assists to go with 11 points, four rebounds, two steals and a block in the win over Bellarmine.
- Set a career high with five made free throws in the road win over Cincinnati.

Junior Year (2022-23)

- Played in 37 games coming off the bench during her junior season.
- Scored six or more points in 11 games this season.
- Scored eight points on 3-for-6 shooting in the win over No. 8 seed Ole Miss.
- Tallied nine points, two boards, two assists and a steal off the bench in the win over No. 12 seed Drake.
- Scored 12 points and tied a career high with five field goals made against #10 Notre Dame.
- Tied a career high with three assists in the home win over Miami.
- Scored a career-high 13 points with four rebounds, two assists and a steal against Boston College. Nine of her 13 points came in the fourth quarter against the Eagles.
- Tallied seven points, tied a career high with three assists and had two steals in the win over Clemson.
- Led the Cardinals and set a career high with eight rebounds to go with nine points in the road win over Virginia.
- Was active on the glass and tied a career high with seven rebounds against Syracuse. She also hit a three in the win, her seventh-straight game with at least one three made.
- Tied a career high with 11 points, four field goals and three three-pointers in the road win over DePaul.
- Tied a career high with seven rebounds and added six points in the win over Kentucky.
- Had a career-best 11 points, four field goals, three steals and three made three pointers in the win over Longwood on Nov. 25.
- Tied a career high with two steals and set a season high with five points in the win at Belmont.

Sophomore Year (2021-22)

- Missed Syracuse and Notre Dame games competing for Canadian National Team in 2022 World Cup Qualifying Tournament in Osaka, Japan
- Played a season-high 15 minutes, recording a season-high five points with three rebounds and one assist off the bench vs. Pitt on 1/6
- Notched a season-high of 12 minutes, recording three points and two rebounds off the bench at Colorado State on 11/28

Canadian National Team (2021)

- Named an alternate on Canada's women's basketball team that competed at the Tokyo Olympic Games, but did not travel
- In mid-June, competed for Canada at the FIBA Women's AmeriCup in San Juan, Puerto Rico. She helped lead Canada to a perfect 4-0 record in pool play and a trip to the semifinals. In the win over El Salvador, she had nine points on 3-of-5 shooting from deep, while adding two steals. She had six points on 2-of-4 shooting from beyond the arc in a win over the U.S. Virgin Islands

Freshman Year (2020-21)

- Played in 20 games, averaging 2.2 points and 2.2 rebounds
- Recorded six points and five rebounds in 12 minutes at Boston College on 2/4
- Converted on her first collegiate three point field goal in a win at Virginia Tech on 1/7
- Tied a season-high eight points, highlighted by 4-5 from the free throw line, in a win vs. Bellarmine on 1/2
- Scored eight points on 3-4 from the field, adding five rebounds and one assist in 19 minutes in her collegiate debut at SEMO on 11/25

High School

- Ranked as the 29th best guard by espnW. She is listed as a four-star prospect by Prospects Nation and is rated No. 54 overall by PASS Scouting Service
- Played for Canada's U19 team at the 2019 FIBA Women's Basketball World Cup in Bangkok, Thailand. She helped lead Canada to the quarterfinals, where they fell to eventual champion USA and head coach Jeff Walz. She finished the tournament averaging 6.4 points, 4.0 rebounds and 1.3 assists
- Also a member of Canada's Senior National team and participated as the youngest player on the roster in a five-game European exhibition tour in Belgium and Great Britain
- Was named the MVP of the first ever BioSteele All Canadian Girls Game in April, the Canadian version of the McDonald's All-American game. She finished with 30 points, 10 rebounds and three steals in that game which featured the top 24 female high school players in Canada

MERISSAH RUSSELL CAREER STATISTICS

SEASON	TEAM	GP-GS	MIN/AVG	Field Goals		3-Point		F-Throws		Rebounds				Scoring						
				FG-FGA	FG%	3FG-3FGA	3FG%	FT-FTA	FT%	OFF	DEF	TOT	AVG	PF-FO	A	TO	BLK	STL	PTS	AVG
2020-21	LOU	20-0	135/6.7	16-36	.444	1-6	.167	10-15	.667	15	29	44	2.2	18-0	8	10	1	4	43	2.2
2021-22	LOU	18-0	117/6.5	6-23	.261	3-9	.333	10-13	.769	5	13	18	1.0	10-0	5	10	0	2	25	1.4
2022-23	LOU	37-0	566/15.3	62-141	.440	29-79	.367	19-25	.760	31	60	91	2.5	63-1	33	32	2	32	172	4.6
2023-24	LOU	33-2	596/18.1	60-152	.395	19-67	.284	28-40	.700	36	49	85	2.6	53-0	33	46	4	31	167	5.1
2024-25	LOU	21-3	367/17.5	37-97	.381	14-55	.255	22-27	.815	24	34	58	2.8	34-1	34	16	3	22	110	5.2
TOTAL		129-5	1781/13.8	181-449	.403	66-216	.306	89-120	.742	111	185	296	2.3	178-2	113	114	10	91	517	4.0



15 ISLA JUFFERMANS

Forward | 6-4 | Freshman
 Coffs Harbour, Australia | Centre of Excellence Australia

SEASON HIGHS

Points	11 vs. Morehead State (11/21/24)
Reb	4 (3x), MR vs. Grambling State (12/12/24)
Asst	1 (4x), MR at Memphis (12/21/24)
Blocks	3 vs. UT Martin (11/12/24)
Steals	1 vs. Grambling State (12/12/24)
FGM	4 vs. Morehead State (11/21/24)
FGA	7 vs. UCLA (11/4/24)
3FGM	
3FGA	
FT	3 vs. Morehead State (11/21/24)
FTA	4 (2x), MR vs. Grambling State (12/12/24)
Minutes	18 vs. Morehead State (11/21/24)

MISC STATS

	Season	Career
Double-Doubles	0	0
10-Plus Points	1	1
20-Plus Points	0	0
30-Plus Points	0	0
Team-High Points	0	0
10-Plus Rebounds	0	0
Team-High Rebounds	0	0
10-Plus Assists	0	0
Team-High Assists	0	0

2024-25 GAME-BY-GAME

Opponent	Min	FG-A	3PT-A	FT-A	O-D-T	PF	AST	TO	STL	BLK	PTS	AVG
vs. UCLA	14	1-7	0-0	0-0	1-0-1	0	0	1	0	0	2	2.0
SOUTHERN INDIANA	13	2-2	0-0	1-2	2-0-2	2	1	2	0	1	5	3.5
at UT Martin	14	1-3	0-0	0-0	1-3-4	3	1	2	0	3	2	3.0
at Kentucky												-DNP-
MOREHEAD ST.	18	4-6	0-0	3-4	2-2-4	2	1	1	0	0	11	5.0
vs. USF	4	2-2	0-0	0-0	0-1-1	1	0	0	0	0	4	4.8
at Colorado	6	1-1	0-0	0-0	1-1-2	0	0	0	0	0	2	4.3
OKLAHOMA	4	0-1	0-0	0-0	0-0-0	3	0	2	0	0	0	3.7
vs. UConn	11	1-2	0-0	1-2	2-0-2	1	0	1	0	0	3	3.6
GRAMBLING ST.	11	2-3	0-0	1-1	3-1-4	2	0	2	1	0	5	3.8
NC STATE	7	0-1	0-0	0-0	1-2-3	3	0	2	0	0	0	3.4
at Memphis	5	0-1	0-0	1-2	0-1-1	3	1	1	0	1	1	3.2
at Boston College												-DNP-
MIAMI	3	0-2	0-0	2-2	0-0-0	0	0	0	0	0	2	3.1
at Wake Forest												-DNP-
at Pitt												-DNP-
GEORGIA TECH												-DNP-
SYRACUSE	5	0-1	0-0	0-0	1-1-2	0	0	2	0	1	0	2.8
at Virginia Tech												-DNP-
at Virginia												-DNP-
at SMU	1	0-0	0-0	0-0	0-0-0	0	0	0	0	0	0	2.6
NOTRE DAME												
CAL												
STANFORD												
at Florida State												
at Duke												
NORTH CAROLINA												
CLEMSON												
at Notre Dame												

Freshman Year (2024-25)

- Tied a season high with four rebounds to go with five points against Grambling State
- Scored a season-best 11 points on 4-for-6 shooting with four rebounds against Morehead State
- Tallied three blocks and four rebounds in the road win over UT Martin
- Made her first collegiate debut against #5/#6 UCLA

Prep and Personal

- Named MVP of the 2022 FIBA Under 18 Women's Asian Championship
- Also named MVP at the U20 Nationals and won the gold medal
- 2023 New South Wales Champion and MVP
- Won Defensive Player of the Year at the U20 Australian Championship
- At the FIBA U19 World Cup, she averaged 10.3 points and 7.1 rebounds a game
- At the U18 Asian Championships she averaged 17 points and 11 rebounds a game
- This most recent season in 2024, she played 16 games with the NBL One Australian League and averaged 18 points and 11 rebounds
- Played 24 games for the NBL One League in 2023 and averaged 16.6 points, 9.5 rebounds and shot 59.4 percent from the field
- In 2022, played 13 games in the NBL One League

ISLA JUFFERMANS CAREER STATISTICS

SEASON	TEAM	GP-GS	MIN/AVG	Field Goals		3-Point		F-Throws		Rebounds				Scoring						
				FG-FGA	FG%	3FG-3FGA	3FG%	FT-FTA	FT%	OFF	DEF	TOT	AVG	PF-FO	A	TO	BLK	STL	PTS	AVG
2024-25	LOU	14-0	116/8.3	14-32	.438	0-0	.000	9-13	.692	14	12	26	1.9	20-0	4	17	6	1	37	2.6
TOTAL		14-0	116/8.3	14-32	.438	0-0	.000	9-13	.692	14	12	26	1.9	20-0	4	17	6	1	37	2.6



21 REAGAN BENDER

Guard | 5-10 | Freshman
Louisville, Ky. | Sacred Heart

SEASON HIGHS	
Points	7 vs. Grambling State (12/12/24)
Reb	1 (4x), MR vs. NC State (12/15/24)
Asst	1 (2x), MR vs. Grambling State (12/12/24)
Blocks	
Steals	1 (2x), MR vs. Grambling State (12/12/24)
FGM	2 (2x), MR vs. Grambling State (12/12/24)
FGA	5 vs. USI (11/8/24)
3FGM	2 (2x), MR vs. Grambling State (12/12/24)
3FGA	5 vs. USI (11/8/24)
FT	1 vs. Grambling State (12/12/24)
FTA	2 vs. Morehead State (11/21/24)
Minutes	15 vs. USI (11/8/24)

MISC STATS	Season	Career
Double-Doubles	0	0
10-Plus Points	0	0
20-Plus Points	0	0
30-Plus Points	0	0
Team-High Points	0	0
10-Plus Rebounds	0	0
Team-High Rebounds	0	0
10-Plus Assists	0	0
Team-High Assists	0	0

2024-25 GAME-BY-GAME														
Opponent	Min	FG-A	3PT-A	FT-A	O-D-T	PF	AST	TO	STL	BLK	PTS	AVG		
vs. UCLA	1	0-0	0-0	0-0	0-0-0	0	0	0	0	0	0	0.0		
SOUTHERN INDIANA	15	0-5	0-5	0-0	0-1-1	1	0	1	1	0	0	0.0		
at UT Martin	13	0-1	0-1	0-0	0-1-1	1	1	0	0	0	0	0.0		
at Kentucky														
MOREHEAD ST.	12	2-3	2-3	0-2	0-0-0	0	0	2	0	0	6	1.5		
vs. USF														
at Colorado														
OKLAHOMA														
vs. UConn	10	0-3	0-2	0-0	0-0-0	0	0	0	0	0	0	1.2		
GRAMBLING ST.	12	2-2	2-2	1-1	0-1-1	3	1	1	1	0	7	2.2		
NC STATE	7	0-1	0-0	0-0	1-0-1	0	0	1	1	0	0	1.9		
at Memphis	1	0-0	0-0	0-0	0-0-0	0	0	0	0	0	0	1.6		
at Boston College														
MIAMI	3	0-0	0-0	0-0	0-0-0	1	0	0	0	0	0	1.4		
at Wake Forest														
at Pitt														
GEORGIA TECH														
SYRACUSE														
at Virginia Tech														
at Virginia														
at SMU														
NOTRE DAME														
CAL														
STANFORD														
at Florida State														
at Duke														
NORTH CAROLINA														
CLEMSON														
at Notre Dame														

Freshman Year (2024-25)

- Tallied a season-best seven points against Grambling State
- Scored her first collegiate points against Morehead State
- Made her collegiate debut against #5/#6 UCLA

Prep and Personal

- Local product and played high school at Sacred Heart in Louisville
- In four seasons as a starter, Bender scored 1,818 points and grabbed 477 rebounds, hit 212 three-pointers during her career and led Sacred Heart to a 128-20 record in those four years and was a finalist for Miss Basketball in the state of Kentucky
- Won her fourth-straight state championship after scoring 18 points in the championship game over McCracken County
- She was named to the all-tournament team and The Courier Journal's All-Seventh Region girls basketball team following the state tournament
- For her senior year, Bender averaged 13.4 points, 3.0 rebounds, 2.9 assists and 1.9 steals per game
- In her junior season, Sacred Heart finished 36-3 for a second straight season and Bender averaged 15.2 points and 3.1 rebounds
- She was a first-team All-State selection after her junior year
- As a sophomore, Bender averaged 11.4 points and 3.2 rebounds a game, while she hit for 10.1 points and 4.2 rebounds as a freshman
- Bender's grandfather, Bob Bender Sr., graduated from the University of Louisville in 1957 and was inducted into the University of Louisville Hall of Fame in 1992

REAGAN BENDER CAREER STATISTICS

SEASON	TEAM	GP-GS	MIN/AVG	Field Goals		3-Point		F-Throws		Rebounds				Scoring						
				FG-FGA	FG%	3FG-3FGA	3FG%	FT-FTA	FT%	OFF	DEF	TOT	AVG	PF	FO	A	TO	BLK	STL	PTS
2024-25	LOU	9-0	72/8.0	4-15	.267	4-13	.308	1-3	.333	1	3	4	0.4	6-0	2	5	0	3	13	1.4
TOTAL		9-0	72/8.0	4-15	.267	4-13	.308	1-3	.333	1	3	4	0.4	6-0	2	5	0	3	13	1.4



22 TAJIANNA ROBERTS

Guard | 5-10 | Freshman
San Diego, Calif. | IMG Academy (FL)

SEASON HIGHS	
Points	23 at Memphis (12/21/24)
Reb	9 at Virginia (1/26/25)
Asst.	5 at SMU (1/30/25)
Blocks	1 (2x), MR vs. USF (11/24/24)
Steals	4 (3x), MR at SMU (1/30/25)
FGM	10 at Memphis (12/21/24)
FGA	19 vs. UCLA (11/4/24)
3FGM	5 at Pitt (1/9/25)
3FGA	10 vs. UCLA (11/4/24)
FT	4 vs. UConn (12/7/24)
FTA	6 at Kentucky (11/18/24)
Minutes	39 at Wake Forest (1/5/25)

MISC STATS		
	Season	Career
Double-Doubles	0	0
10-Plus Points	17	17
20-Plus Points	3	3
30-Plus Points	0	0
Team-High Points	5	5
10-Plus Rebounds	0	0
Team-High Rebounds	0	0
10-Plus Assists	0	0
Team-High Assists	6	6

2024-25 GAME-BY-GAME

Opponent	Min	FG-A	3PT-A	FT-A	O-D-T	PF	AST	TO	STL	BLK	PTS	AVG
vs. UCLA*	36	8-19	4-10	1-2	2-1-3	1	1	0	1	1	21	21.0
SOUTHERN INDIANA*	22	4-8	3-6	0-0	0-4-4	0	4	0	1	0	11	18.5
at UT Martin*	21	6-8	1-2	0-2	0-1-1	1	0	1	0	0	13	15.0
at Kentucky*	35	4-9	1-3	3-6	2-2-4	1	0	1	2	0	12	14.3
MOREHEAD ST.*	24	3-7	3-5	2-4	1-1-2	1	2	1	0	0	11	13.6
vs. USF*	26	0-6	0-4	2-2	0-2-2	2	1	4	1	1	2	11.7
at Colorado*	29	5-10	1-2	2-3	0-2-2	3	2	0	4	0	13	11.9
OKLAHOMA*	31	5-12	1-5	2-2	0-1-1	4	3	4	2	0	13	12.0
vs. UConn*	28	1-11	1-7	4-4	2-1-3	1	3	3	2	0	7	11.4
GRAMBLING ST.*	20	4-11	0-4	2-2	2-0-2	1	4	3	4	0	10	11.3
NC STATE*	24	3-12	1-6	0-0	2-2-4	2	1	2	3	0	7	10.9
at Memphis*	30	10-17	3-7	0-0	0-0-0	1	2	4	3	0	23	11.9
at Boston College*	38	5-17	1-5	2-2	2-1-3	0	4	1	2	0	13	12.0
MIAMI*	22	6-13	2-6	0-0	0-4-4	3	4	2	2	0	14	12.1
at Wake Forest*	39	6-13	3-6	2-2	0-2-2	0	3	2	1	0	17	12.5
at Pitt*	30	6-13	5-9	0-0	1-3-4	1	1	3	2	0	17	12.8
GEORGIA TECH*	38	8-18	0-6	0-1	1-2-3	2	1	2	1	0	16	12.9
SYRACUSE*	32	6-14	0-4	1-1	0-2-2	1	4	1	1	0	13	12.9
at Virginia Tech*	33	2-7	0-3	3-5	0-4-4	3	1	2	1	1	7	12.6
at Virginia*	36	5-16	1-6	0-1	4-5-9	1	4	3	3	0	11	12.6
at SMU*	35	9-14	2-5	2-3	2-2-4	1	5	3	4	0	22	13.0
NOTRE DAME												
CAL												
STANFORD												
at Florida State												
at Duke												
NORTH CAROLINA												
CLEMSON												
at Notre Dame												

Freshman Year (2024-25)

- Led the team with 22 points and set a career high with five assists to go with four steals and four rebounds in the road win over SMU
- Set a career high with nine rebounds, tied a career high with four assists to go with 11 points and three steals in the road win over Virginia
- Scored in double figures with a team-best 13 points and tied a season high with four assists in the win over Syracuse
- ACC Rookie of the Week (1/14)
- Led the team with 16 points and had three rebounds in the win over #13 Georgia Tech
- Scored a team-high 17 points and set a season high with five three pointers in the road win over Pitt
- Recorded 17 points on 6-for-13 shooting and 3-for-6 from behind the arc to go with three assists, two rebounds and a steal in the road win over Wake Forest
- Scored 14 points and tied a season high with four rebounds and four assists in the win over Miami
- Tallied 13 points and tied a career high with four assists, three rebounds and two steals in the win over Boston College
- Scored a season-best 23 points on 10-for-17 shooting with three steals and two assists in the win over Memphis
- Tied a season-high with four assists and four steals to go with 10 points against Grambling State
- Had a team-best three assists against #2 UConn
- Scored 13 points, led the team with three assists and had two steals against #11 Oklahoma
- ACC Rookie of the Week (12/2)
- Tallied 13 points and had a season-best four steals to go with two rebounds and two assists in the road win over Colorado.
- Scored in double figures for the fifth-straight game with 11 points and was 3-for-5 from three against Morehead State
- Tallied 12 points and tied a season best with four rebounds and two steals against #20 Kentucky
- Scored 13 points on 6-for-8 shooting in the win over UT Martin
- ACC Rookie of the Week (11/11)
- Led the team with four assists to go with 11 points and four rebounds against Southern Indiana
- Earned a start in her first collegiate game and had a game-high 21 points, made four three-pointers and did not commit a turnover against #5/#6 UCLA
- She is the first Louisville freshman to score 20+ points in her debut since the 2020 season

Prep and Personal

- 2024 Naismith Trophy Honorable Mention All-American
- Participated and advanced to the finals of the 2024 State Farm 3-point shootout in Phoenix
- She played in the Jordan Brand Classic with fellow incoming recruits Mackenly Randolph and Izela Arenas
- Guided IMG to the Chipotle National Finals in her senior season
- In the September of 2023, she guided Team South to a championship at the 2023 Nike World Basketball Festival
- In her junior season, she led La Jolla to their third CIF title in four years and earned a top five national ranking by Max Preps
- She averaged 14 points, 4.6 rebounds, and 3.6 assists a game in her junior season with La Jolla
- A five-star prospect and ranked No. 24 overall by espnW Hoop Gurlz
- She chose the Cardinals over Kentucky, Duke, California, and Virginia Tech

TAJIANNA ROBERTS CAREER STATISTICS

		Field Goals		3-Point		F-Throws		Rebounds				Scoring								
SEASON	TEAM	GP-GS	MIN/AVG	FG-FGA	FG%	3FG-3FGA	3FG%	FT-FTA	FT%	OFF	DEF	TOT	AVG	PF-FO	A	TO	BLK	STL	PTS	AVG
2024-25	LOU	21-21	628/29.9	106-255	.416	33-111	.297	28-42	.667	21	42	63	3.0	30-0	50	42	3	40	273	13.0
TOTAL		21-21	628/29.9	106-255	.416	33-111	.297	28-42	.667	21	42	63	3.0	30-0	50	42	3	40	273	13.0



30 JAYDA CURRY

Guard | 5-6 | Senior
Corona, Calif. | Centennial | Cal

SEASON HIGHS

Points	21 vs. Miami (1/2/25)
Reb	4 (2x), MR vs. NC State (12/15/24)
Asst.	8 at Virginia (1/26/25)
Blocks	
Steals	3 (2x), MR at Boston College (12/29/24)
FGM	6 (2x), MR at Virginia (1/26/25)
FGA	19 at Virginia (1/26/25)
3FGM	5 at Virginia (1/26/25)
3FGA	12 at Virginia (1/26/25)
FT	5 vs. Miami (1/2/25)
FTA	5 vs. Miami (1/2/25)
Minutes	37 at Virginia (1/26/25)

CAREER HIGHS

Points	30 at Stanford (1/21/22)*
Reb	10 vs. Arkansas Pine Bluff (12/3/22)*
Asst.	8 (3x), latest at Virginia (1/26/25)
Blocks	1 (3x), latest vs. Washington State (2/28/22)*
Steals	6 vs. NC A&T (12/3/23)
FGM	11 at Utah (2/23/23)*
FGA	23 (2x), MR vs. Notre Dame (11/12/22)*
3FGM	5 at Virginia (1/26/25)
3FGA	12 at Virginia (1/26/25)
FT	12 at Stanford (1/21/22)*
FTA	14 at Stanford (1/21/22)*
Min.	40 (2x), latest vs. Washington State (3/1/23)*
	* at Cal

MISC STATS

	Season	Career*
Double-Doubles	0	1
10-Plus Points	12	73
20-Plus Points	1	18
30-Plus Points	0	1
Team-High Points	4	44
10-Plus Rebounds	0	1
Team-High Rebounds	0	4
10-Plus Assists	0	0
Team-High Assists	5	29

* at Cal & Louisville

2024-25 GAME-BY-GAME

Opponent	Min	FG-A	3PT-A	FT-A	O-D-T	PF	AST	TO	STL	BLK	PTS	AVG
vs. UCLA												
SOUTHERN INDIANA												
at UT Martin												
at Kentucky												
MOREHEAD ST.	19	4-6	2-3	1-1	0-2-2	1	3	0	0	0	11	11.0
vs. USF	31	4-11	0-4	4-4	0-2-2	2	6	1	3	0	12	11.5
at Colorado	22	5-10	1-4	3-4	1-2-2	3	3	1	1	0	14	12.3
OKLAHOMA	23	4-9	1-3	2-2	1-1-2	4	2	2	1	0	11	12.0
vs. UConn	11	2-4	0-1	1-1	0-0-0	0	0	0	0	0	5	10.6
GRAMBLING ST.	12	2-5	1-2	2-2	0-0-0	3	1	2	0	0	7	10.0
NC STATE	23	1-10	1-6	2-2	0-4-4	2	2	1	2	0	5	9.3
at Memphis	27	4-8	3-6	3-3	0-3-3	4	5	1	2	0	14	9.9
at Boston College*	31	4-13	2-7	4-4	1-1-2	2	2	4	3	0	14	10.3
MIAMI*	33	6-12	4-9	5-5	0-2-2	2	3	1	1	0	21	11.4
at Wake Forest*	24	3-7	2-5	3-4	0-0-0	2	0	4	0	0	11	11.4
at Pitt*	31	3-13	2-10	2-2	0-3-3	3	3	2	0	0	10	11.3
GEORGIA TECH*	36	2-7	1-5	3-3	0-2-2	4	5	1	1	0	8	11.0
SYRACUSE*	33	4-10	4-8	0-0	0-3-3	4	2	0	0	0	12	11.1
at Virginia Tech*	35	4-17	2-9	3-3	0-2-2	5	3	2	0	0	13	11.2
at Virginia*	37	6-19	5-12	2-2	1-2-3	3	8	2	2	0	19	11.7
at SMU*	30	5-9	3-5	2-2	0-2-2	3	4	2	1	0	15	11.9
NOTRE DAME												
CAL												
STANFORD												
at Florida State												
at Duke												
NORTH CAROLINA												
CLEMSON												
at Notre Dame												

Louisville - Senior Year (2024-25)

- Scored 15 points on 5-for-9 shooting and 3-for-5 from behind the arc with four assists in the road win over SMU
- Set a career high with five three-pointers, tied a career high with eight assists and had a team best 19 points in the road win over Virginia
- Scored 13 points on the road against Virginia Tech
- Tied a career high with four made three points and had 12 points, three rebounds and two assists in the win over Syracuse
- Led the team with five assists and had eight points in the win over #13 Georgia Tech
- Scored 10 points and led the team with three assists in the road win over Pitt
- Recorded seven of her 11 points in overtime in the road win over Wake Forest
- Scored a season-best 21 points and tied a career high with four made three pointers in the win over Miami
- Led the team with 14 points and had three steals, two assists and two rebounds in the win over Boston College
- Tied a season high with 14 points and had five assists, three rebounds and two steals in the win over Memphis
- Scored 11 points and had two rebounds and two assists against #11 Oklahoma
- Recorded a team-best 14 points and three assists to go with two rebounds and a steal in the road win over Colorado.
- Scored 12 points and had six assists and three steals in the win over South Florida
- Made her first appearance of the season against Morehead State and scored 11 points to go with three assists and two rebounds
- 2025 Drysdale Award Watch List

Louisville - Junior Year (2023-24)

- Played all 34 games and made five starts with the Cardinals.
- Was second on the team with 45 three-pointers and was one of six players to average 7 or more points per game (9.0).
- Scored a season-high 26 points and led the team with three assists against No. 4 seed Notre Dame.
- Tied a season high with three made three-pointers and tallied 13 points in the road win over Georgia Tech.
- Led the Cards with 15 points on 6-for-9 shooting and tied a season high with three made three pointers in the win over Pitt.
- Scored in double figures for the third-straight game with 14 points on the road against #23 North Carolina.
- Led the team and tied a season high with 19 points, set a season high with eight made field goals and tied a season high with three three-pointers made in the road win over Clemson.
- Had a team-best 12 points and shot 5-for-6 from the field and 2-for-2 from behind the arc in the home win over Wake.
- Tallied season-best marks with 19 points on 7-for-12 shooting in the win over #RV23 Miami. She was 2-for-2 from three and scored 11 of her 19 points in the third quarter. Curry eclipsed 1,000 career points in the win.
- Scored a team-best 12 points, set a career high with six steals, led the team with five assists and had five rebounds in the win over NC A&T.
- Tied a season high with 13 points and hit a season best three three-pointers in the win over Gonzaga.
- Recorded a season-high six assists against Alabama.
- Scored in double figures for the second time this season with 11 points against Bellarmine.
- In her Louisville regular season debut, she scored in double figures with 13 points and added two assists and a steal against Cincinnati.
- 2023-24 Naismith Women's Player of the Year Watch List
- ACC Newcomer Watch List

Curry transferred to Louisville in April 2023 and will be eligible to play for the Cardinals during the 2023-24 season.

Cal - Sophomore Year (2022-23)

- Named to Pac-12 Honorable Mention team by the coaches and All-Pac-12 First Team by the media.
- One of five players to appear in all 30 games and started every game.
- Logged 988 minutes, averaging 32.9 minutes per contest which led the team.
- Led the team in scoring at 15.5 points per game, which ranked sixth in the Pac-12 and tops among all sophomores in the conference and 22nd nationally.
- Became the second fastest player in program history to score 500 points, doing so in 29 games, against Montana on Nov. 26.
- Scored in double-figures in 23 games and led the team in scoring in 18 games.
- Tied for the team lead with 59 made 3-pointers, which ranked seventh in the Pac-12.
- Her 3-point total ranks seventh on Cal's all-time single season list.
- Was the only player in the Pac-12 and one of eight players in DI women's

basketball to hit at least one 3-pointer in every game for the season.

- Has an active streak of 51 consecutive regular season games with at least one 3PM, which is the longest known streak in Pac-12 history since the 1999-00 season.
- Tied her career-high with four 3PM twice (last against No. 25 USC on Feb. 19, Oregon on Jan. 27).
- Was second on the team in assists (3.5 assists per game), which ranked 10th in the Pac-12.
- Had a career-high 10 rebounds against Arkansas-Pine Bluff on Dec. 3.
- Registered her first career double-double with 19 points and 10 rebounds against Arkansas-Pine Bluff on Dec. 3.

Cal - Freshman Year (2021-22)

- Named the Pac-12 Freshman of the Year by the Pac-12 Media, also earned All-Conference honors by the media.
- Named to Pac-12 Honorable Mention team by the coaches and All-Freshman Team.
- Led the Pac-12 in scoring, averaging 18.6 points per game - the first freshman in conference history to lead the Pac-12 in scoring.
- The 18.6 points per game ranked in the top-50 in the nation. She finished the year as the nation's second leading scorer.
- Shot 38.6 percent from the field (135-for-350) and 33.6 percent from 3-point range (47-for-140).
- Connected on 80.4 percent of her free throw attempts (111-for-138).
- Was elite at getting to the line, she led the Pac-12 in free throws made and was second in the conference in attempts.
- Five time Pac-12 Freshman of the Week
- Played in 23 games, making 23 starts. Averaged 34.6 minutes per contest which was fifth most by a freshman in the nation.
- Scored 426 points - finished with 22 games in double figures, including eight with 20 or more points.
- The 428 points was just 58 points behind the top total in the conference in eight less games played.
- Led the Bears in scoring in 16 of the 23 games she played.
- Was second on the team in assists with 64, her 2.8 assists per game ranked in the top-15 in the Pac-12. She was one of four players - and only freshman - in the Pac-12 to finish in the top-15 in scoring and assists.
- Scored a season-high 30 points at No. 2 Stanford on Jan. 21.
- In Pac-12 play she averaged 17.1 points per game which was third in the conference - tops among all freshmen.
- Made her collegiate debut on Nov. 9 against Sacramento State, finished with 23 points, along with five rebounds and three assists.

High School

- Named Ms. Basketball State Player of the Year
- Named the MaxPreps California Player of the Year
- Was named the 2020 Press Enterprise Player of the Year
- Named the 2020 Riverside Player of the Year
- A four-time letter winner at Centennial High School for head coach Martin Woods.
- Earned All-American Honorable Mention honors from MaxPreps following her junior campaign.
- Led Centennial to a California State Championship her senior year, she finished with a double-double scoring 27 points and grabbing 11 rebounds in the win over Mater Dei.
- In four years she amassed 2,190 points, 778 field goals, 567 rebounds, 399 assists and 375 steals.
- Averaged 18.9 points per game in her four year career while shooting 41.3 percent from the field.
- As a senior she averaged 21.3 points per game, 6.4 rebounds, 5.1 assists and 3.9 steals per game.
- Her junior year she scored 717 points, averaging 22.4 points per contest.
- She currently holds the Centennial single-game scoring record with 50 points.

JAYDA CURRY CAREER STATISTICS

SEASON	TEAM	GP-GS	MIN/AVG	Field Goals		3-Point		F-Throws		Rebounds				Scoring						
				FG-FGA	FG%	3FG-3FGA	3FG%	FT-FTA	FT%	OFF	DEF	TOT	AVG	PF-FO	A	TO	BLK	STL	PTS	AVG
2021-22	Cal	23-23	796/34.6	135-350	.386	47-140	.336	111-138	.804	11	74	85	3.7	61-2	64	57	3	32	428	18.6
2022-23	Cal	30-30	989/33.0	157-414	.379	59-176	.335	93-120	.775	11	93	104	3.5	75-1	106	68	0	15	466	15.5
2023-24	LOU	34-5	751/22.1	109-277	.394	45-116	.388	49-64	.766	14	43	57	1.7	72-2	66	59	0	25	312	9.2
2024-25	LOU	17-9	458/26.9	63-170	.371	34-99	.343	42-44	.955	3	31	34	2.0	47-1	52	26	0	17	202	11.9
TOTAL FOR LOU		51-14	1209/23.7	172-447	.385	79-215	.367	91-108	.843	17	74	91	1.8	119-3	118	85	0	42	514	10.1
TOTAL		104-67	2994/28.8	464-1211	.383	185-531	.348	295-366	.806	39	241	280	2.7	255-6	288	210	3	89	1408	13.5



44 OLIVIA COCHRAN

Forward | 6-3 | Graduate
Columbus, Ga. | Carver

SEASON HIGHS

Points.....	18 vs. Grambling State (12/12/24)
Reb.....	13 at Memphis (12/21/24)
Asst.....	4 (3x), MR at Wake Forest (1/5/25)
Blocks.....	3 at Kentucky (11/16/24)
Steals.....	3 (4x), MR vs. Miami (1/2/25)
FGM.....	8 vs. Grambling State (12/12/24)
FGA.....	13 vs. USF (11/24/24)
3FGM.....	1 (3x), MR vs. Miami (1/2/25)
3FGA.....	2 (4x), MR vs. Miami (1/2/25)
FT.....	9 at Wake Forest (1/5/25)
FTA.....	9 at Wake Forest (1/5/25)
Minutes.....	38 (2x), MR at Wake Forest (1/5/25)

CAREER HIGHS

Points.....	21 vs. Liberty (11/25/23), vs. DePaul (11/12/23)
Reb.....	15 vs. Northwestern (3/24/21)
Asst.....	6 at Colorado State (11/28/21)
Blocks.....	3 (4x), MR at Kentucky (11/16/24)
Steals.....	4 vs. South Carolina (4/1/22)
FGM.....	9 vs. DePaul (11/12/23)
FGA.....	17 vs. NC State (2/5/24)
3FGM.....	1 (8x), MR vs. Miami (1/2/25)
3FGA.....	2 (8x), MR vs. Miami (1/5/25)
FT.....	9 (3x), MR at Wake Forest (1/5/25)
FTA.....	12 vs. Liberty (11/25/23)
Minutes.....	38 (2x), MR at Wake Forest (1/5/25)

MISC STATS

	Season	Career
Double-Doubles.....	3	17
10-Plus Points.....	12	75
20-Plus Points.....	0	3
30-Plus Points.....	0	0
Team-High Points.....	7	21
10-Plus Rebounds.....	3	25
Team-High Rebounds.....	11	59
10-Plus Assists.....	0	0
Team-High Assists.....	2	10

2024-25 GAME-BY-GAME

Opponent	Min	FG-A	3PT-A	FT-A	O-D-T	PF	AST	TO	STL	BLK	PTS	AVG
vs. UCLA*	23	3-6	1-2	1-2	2-2-4	5	0	2	0	0	8	8.0
SOUTHERN INDIANA*	24	6-9	0-0	3-4	0-6-6	0	1	0	1	0	15	10.8
at UT Martin*	22	4-6	1-2	5-6	1-6-7	1	2	2	3	1	14	10.8
at Kentucky*	38	1-11	0-2	0-0	2-4-6	2	4	5	0	3	2	9.3
MOREHEAD ST.*	16	2-3	0-1	2-4	0-6-6	0	1	1	2	1	6	9.0
vs. USF*	30	6-13	0-1	1-2	3-6-9	2	0	2	1	0	13	9.7
at Colorado*	18	1-5	0-1	0-2	1-2-3	5	0	6	2	0	2	8.6
OKLAHOMA*	26	6-12	0-0	5-6	3-6-9	5	2	4	1	0	17	9.6
vs. UConn*	16	3-7	0-1	1-4	2-2-4	3	0	1	0	0	7	9.3
GRAMBLING ST.*	24	8-10	0-0	2-3	5-6-11	1	1	2	0	1	18	10.2
NC STATE*	20	3-11	0-1	2-2	0-4-4	2	0	1	1	0	8	10.0
at Memphis*	29	6-10	0-0	0-0	2-11-13	4	0	3	0	2	12	10.2
at Boston College*	32	6-9	0-1	1-2	4-3-7	3	4	4	3	0	13	10.4
MIAMI*	27	6-9	1-2	0-0	1-2-3	2	0	1	3	0	13	10.6
at Wake Forest*	38	2-10	0-0	9-9	3-4-7	4	4	3	1	0	13	10.7
at Pitt*	25	1-5	0-0	0-0	3-0-3	4	2	1	2	2	2	10.2
GEORGIA TECH*	25	4-5	0-0	0-0	1-5-6	2	1	3	0	0	8	10.1
SYRACUSE*	26	4-6	0-0	2-2	2-2-4	2	3	3	1	0	10	10.1
at Virginia Tech*	31	6-11	0-0	2-2	4-4-8	4	0	0	2	1	14	10.3
at Virginia*	33	4-9	0-0	2-2	4-7-11	2	3	0	1	10	10.3	
at SMU*	17	4-7	0-0	0-0	1-4-5	5	2	1	0	0	8	10.1
NOTRE DAME												
CAL												
STANFORD												
at Florida State												
at Duke												
NORTH CAROLINA												
CLEMSON												
at Notre Dame												

Graduate Year (2024-25)

- Recorded a double-double with 10 points and 11 rebounds in the road win over Virginia
- Led the team with 14 points and eight rebounds against Virginia Tech
- Scored 10 points with four rebounds and three assists in the win over Syracuse
- Tied a career high after going 9-for-9 from the free throw line and led the team with seven rebounds and four assists to go with 13 points in the road win over Wake Forest
- Scored in double figures for the third-straight game with 13 points on 6-for-9 shooting and tied a season high with three steals in the win over Miami
- Led the team with seven rebounds, four assists while scoring 13 points and tied a season high with three steals in the road win over Boston College
- Tallied her second double-double of the season with 12 points and a season-best 13 rebounds in the win over Memphis
- Recorded her first double-double of the season with a season-best 18 points and 11 rebounds on 8-for-10 shooting against Grambling State
- Tallied a season and team-best 17 points and nine rebounds against #11 Oklahoma
- Had a team-best 13 points and nine rebounds and was named WBCA Showcase Most Outstanding Player in the win over South Florida
- Led the team with six rebounds and had eight points against Morehead State
- Set a career high with 38 minutes played, tied a career high with three blocks and led the team with six rebounds against #20 Kentucky
- Scored 14 points on 4-for-6 shooting to go with seven rebounds, three steals and two assists against UT Martin
- Led the team with 15 points against Southern Indiana
- Named to the McClain Award Watch List for the fourth-straight season

Senior Year (2023-24)

- Played and started all 34 games for the Cardinals.
- Tied for the team lead with 6.6 rebounds, 1.4 steals and 0.6 blocks per game, second on the squad with five double-doubles and was tied for second on the team with 10.8 points per game.
- Led the team with 17 points and 10 rebounds for her fifth double-double against Middle Tennessee.
- Tied a season high with three steals, two blocks and had nine points and seven rebounds against Boston College.
- All-ACC Second Team
- Scored a team-best 18 points and hauled in 11 rebounds in the home win over Florida State.
- Led the team with 12 rebounds and had eight points in the road win over Georgia Tech.
- Had a team-best nine rebounds to go with 11 points on 3-for-6 shooting in the road win over Boston College.
- Led the team with 17 points and 12 rebounds for her third double-double of the season against No. 3/5 NC State.
- Recorded nine points, nine rebounds, tied a season best with three assists and two blocks over a career-high 36 minutes played against #12/23 Syracuse.
- Scored in double figures for the 12th-straight game with 10 points, team-high seven rebounds and was 5-for-10 shooting from the floor against Boston College.
- Tallied 14 points, team-best five rebounds and tied a season high with four assists against #23/24 North Carolina.
- Had 12 points with six rebounds and two assists in the road win over Clemson.
- Led the team with 12 points, was 6-for-6 from the line and had a season-high four assists in the win over Wake.
- Scored 10 points on 4-for-8 shooting with four rebounds in the road win over Pitt.
- Tallied double-digit points with 13 points on 6-for-11 shooting to go with a team-best six rebounds and tied a season best with three steals against Duke.
- Scored in double figures with 11 points to go with seven rebounds, two steals and two blocks against #RV/23 Miami.
- Led the team with 14 points on 5-for-8 shooting and added seven rebounds in the win over #23 Washington.
- Scored in double figures with 12 points on 6-for-10 shooting to go with a team-best six rebounds, tied a season high with three steals and season-best two blocks against No. 17/18 UConn.
- Tied a season high with 11 rebounds and tied for the team high with 16 points for her second double-double of the season against Morehead State.
- Eclipsed the 1,000-point plateau with 10 points in the win over Kentucky. She also added a team-best eight rebounds and three assists with one steal and zero turnovers.
- Scored 10 points on 5-for-8 shooting with two rebounds, an assist, a steal and a block in just 15 minutes against NC A&T.
- Tied a career high with 21 points and hauled in 11 rebounds for her 10th career double-double in the win against Liberty. She tied a career high with nine made free throws and tied a season high with three steals.
- Led the Cards with eight rebounds to go with 11 points and three steals against Bucknell.
- Recorded 10 points on 5-for-8 shooting, two rebounds, two assists and one steal in just 13 minutes against Bellarmine.
- 2023-24 Wooden Award Preseason Top 50 Watch List
- Set a career high with 21 points on 9-for-14 shooting to go with five rebounds and team-best three assists and three steals against DePaul.
- Led the Cardinals with 10 rebounds and three assists to go with seven points in the win over Cincinnati.
- 2023-24 Naismith Women's Player of the Year Watch List
- Preseason All-ACC Team
- Katrina McClain Award Watch List

Junior Year (2022-23)

- Only player to play and start in all 38 games this season.
- Led the team in rebounds (6.5) per game and double-doubles (4) in her junior season.
- Tallied a career-best 20 points to go with 14 rebounds for her fourth double-double of the

season against No. 4 Iowa. The 14 rebounds are tied for the fifth-most in program history in an NCAA Tournament game.

- Scored 10 points with six rebounds, a block and a steal in the win over No. 8 seed Ole Miss.
- ACC Second Team All-Tournament
- Reached double figures for the fourth-straight game with 11 points to go with four rebounds, two blocks and one steal against No. 3 Virginia Tech in the ACC Finals.
- Scored 12 points and led the team with eight rebounds in the ACC semifinal win over Notre Dame.
- Tallied 11 points on 5-of-6 shooting in the win over Wake Forest.
- Scored 10 points and added six rebounds, three assists, a block and a steal against #10 Notre Dame.
- Hit the tying layup with 3.8 seconds left in overtime and had six points, five rebounds and tied a season high with two steals in overtime on the road against #10 Notre Dame.
- Hauled in a team-best 12 rebounds to go with seven points in the win over Clemson. It was her fifth game this season with 10 or more rebounds.
- Scored in double figures with 11 points and led the Cards with six rebounds against Wake Forest.
- Had a team-high 11 rebounds against #20/18 NC State. It was the fourth time this season she has had 10 or more rebounds in a game.
- Led the team with seven rebounds and had eight points, three assists, two steals and a block in the win over Boston College.
- Scored 13 points, tied a career high with three blocks, had a season-high four assists to go with eight rebounds in the road win over Florida State.
- Led the team with nine rebounds, scored eight points and had two assists and two steals against Pitt. It was her second game this season that she had multiple steals and multiple blocks in the same game.
- Tallied a team-high six rebounds to go with 10 points in the win over Georgia Tech.
- Scored a season-high 15 points on 7-of-9 shooting to go with seven rebounds in the win over Syracuse.
- Recorded her third double-double of the season with 11 points and tied a season high with 13 rebounds against Pitt.
- Led the team with nine rebounds and added nine points in the road win over Kentucky.
- Scored in double figures for the second-straight game and third time in her last four with 12 points against SIUE on 6-of-8 shooting.
- Led the team with 14 points against Middle Tennessee on Dec. 4. She also had seven rebounds, her sixth game this season with seven or more rebounds.
- Recorded her second double-double of the season and seventh of her career in the win over Longwood on Nov. 25. She had 10 points and 10 rebounds.
- Led the Cardinals with a season-high four assists and had a season-high two blocks in the win over #15 Texas on Nov. 20.
- On her 21st birthday, she had her sixth career double-double with 13 points and 13 rebounds. She also led the Cardinals with a team-high three assists in the win over Belmont.
- One of four players to score in double figures against IUPUI (11 pts.).
- Katrina McClain Award Watch List

Sophomore Year (2021-22)

- In ACC play, ranked fourth on the team with 9.7 points per game, while pulling down 5.8 rebounds per game and shooting 50 percent from the floor and 75 percent from the stripe
- Scored 14 points on 6-11 shooting and added four rebounds in the Final Four of the NCAA tournament vs. South Carolina on 4/1
- With 52-50 lead with 2:52 remaining against Michigan in Elite 8, scored six straight points to build lead to 58-50 with 33 seconds left, finished with nine points on 4-7 shooting and four rebounds in 20 minutes
- Scored 11 points on 5-8 shooting, while contributing five rebounds and three assists in 25 minutes in the second win of the NCAA tournament vs Gonzaga
- Shot a perfect 4-4 from the field and added four rebounds in the opening round win of the NCAA tournament vs. UAlbany
- Recorded 14 points on 5-8 from the field and 4-5 from the line, adding five rebounds, two blocks and two steals at UNC on 2/17
- Led the team 11 rebounds while adding nine points off 4-6 from the floor and one assist at Syracuse on 2/6
- Recorded 18 points on 8-15 from the field, including game-winner, while adding five rebounds and one assist at Miami on 2/1
- Scored 17 points on 6-10 shooting, including her first 3 of the season, with 6 rebounds vs. FSU on 1/27
- Led the team with a career-high tying 19 points on 8-12 from the field, adding seven rebounds, one assist and one block at NC State on 1/20
- Put up a season-high 13 points, shooting 5-10 and adding 7 rebounds, 1 assist, and 1 steal, vs. Syracuse on 1/13
- Tallied a new season-high 11 points, shooting a perfect 3-3 from the field and 5-6 from the charity stripe, adding four rebounds, one block and one steal vs. Pitt on 1/6
- Recorded a season high 13 rebounds while tying a career high three blocks, adding seven points, one assist and one steal in 33 minutes (ties career high) at Georgia Tech on 1/2
- Tied a season high 10 points, adding four rebounds, one assist, one steal and one block while hitting 3-6 shots from the field and 4-4 from the charity stripe vs. BC
- Recorded a career-high six assists while committing zero turnovers at Colorado State
- Named to Katrina McClain Award Watch List

OLIVIA COCHRAN CAREER STATISTICS

SEASON	TEAM	GP-GS	MIN/AVG	Field Goals		3-Point		F-Throws		Rebounds				Scoring						
				FG-FGA	FG%	3FG-3FGA	3FG%	FT-FTA	FT%	OFF	DEF	TOT	AVG	PF-FO	A	TO	BLK	STL	PTS	AVG
2020-21	LOU	29-25	605/20.9	111-204	.544	1-7	.143	63-81	.778	60	140	200	6.9	64-0	20	48	24	12	286	9.9
2021-22	LOU	33-32	737/22.3	109-212	.514	1-4	.250	65-94	.691	85	83	168	5.1	79-1	35	60	24	27	284	8.6
2022-23	LOU	38-38	917/24.1	126-252	.500	2-9	.222	67-100	.670	83	163	246	6.5	112-4	40	71	23	25	321	8.4
2023-24	LOU	34-34	922/27.1	145-292	.497	1-7	.143	77-111	.694	64	160	224	6.6	94-3	46	60	20	47	368	10.8
2024-25	LOU	21-21	538/25.6	86-174	.494	3-14	.214	38-52	.731	44	92	136	6.5	58-4	29	48	12	23	213	10.1
TOTAL		155-150	3718/24.0	577-1134	.509	8-41	.195	310-438	.708	336	638	974	6.3	407-12	170	287	103	134	1472	9.5

2024-25 BOX SCORES

Official Basketball Box Score - Final Louisville at UCLA. Game Time: 8:45 PM. Game Duration: 1:56. Attendance: 3,472. Record: 0-1. Includes player stats for Nyla Harris, Makenly Randolph, Olivia Cochran, Ja'Leah Williams, and Tajanna Roberts.

Official Basketball Box Score - Final Southern Ind. at Louisville. Game Time: 7:02 PM. Game Duration: 1:52. Attendance: 7,666. Record: 1-1. Includes player stats for Meredith Raley, Amiyah Buchanan, Trinity Rakston, and Vanessa Shafford.

Official Basketball Box Score - Final UCLA - 66. Record: 1-0. Includes player stats for Gabriela Jaquez, Angela Dugalic, Lauren Betts, and Loundryn Jones.

Official Basketball Box Score - Final Louisville - 75. Record: 1-1. Includes player stats for Nyla Harris, Makenly Randolph, Olivia Cochran, Ja'Leah Williams, and Tajanna Roberts.

Summary statistics for Louisville vs UCLA: Biggest lead 6 (1st 8:54), Best Scoring Run 6 (1st 8:54), Lead Changes 13, Times Tied 4, Time with Lead 15:27.

Summary statistics for Louisville vs Southern Ind.: Biggest lead 4 (1st 0:54), Best Scoring Run 6 (4th 2:15), Lead Changes 4, Times Tied 3, Time with Lead 02:05.

Official Basketball Box Score - Final #18 Louisville at UT Martin. Game Time: 6:00 PM. Game Duration: 2:09. Attendance: 4,453. Record: 2-1. Includes player stats for Nyla Harris, Lexi Rubel, Makenly Randolph, Olivia Cochran, and Ja'Leah Williams.

Official Basketball Box Score - Final Louisville at Kentucky. Game Time: 6:00 PM. Game Duration: 2:11. Attendance: 6,117. Record: 2-2. Includes player stats for Nyla Harris, Makenly Randolph, Olivia Cochran, Ja'Leah Williams, and Tajanna Roberts.

Official Basketball Box Score - Final UT Martin - 64. Record: 0-3. Includes player stats for Anya Brown, Lexi Rubel, Daejah Richmond, and Shaee Littleford.

Official Basketball Box Score - Final Kentucky - 71. Record: 4-0. Includes player stats for Teonni Key, Amelia Hassett, Clara Strack, and Georgia Amoree.

Summary statistics for Louisville vs UT Martin: Biggest lead 33 (4th 6:34), Best Scoring Run 17 (2nd 1:52), Lead Changes 2, Times Tied 0, Time with Lead 39:33.

Summary statistics for Louisville vs Kentucky: Biggest lead 7 (3rd 1:08), Best Scoring Run 9 (3rd 1:08), Lead Changes 9, Times Tied 6, Time with Lead 28:02.

2024-25 BOX SCORES



Official Basketball Box Score - Final
Morehead St. at Louisville
11/21/24 KFC Yum! Center, Louisville
2024-25 Women's Basketball

Game Time: 7:02 PM
Game Duration: 1:49
Attendance: 7,344

Officials: Rod Creech, Mark Berger, Erika Hermin

Box score table for Morehead St. at Louisville. Columns include NO., Name, Min, FG, 3P, FT, Rebounds, Fouls, TP, AS, TO, ST, Blocks, +/-, and Shooting By Period.

Shooting By Period table for Morehead St. at Louisville. Columns include 1st FG%, 2nd FG%, 3rd FG%, 4th FG%, GM FG%, and FT%.



Official Basketball Box Score - Final
Louisville at South Fla.
11/24/24 State Farm Field House, Lake Buena Vista, Fla.
2024-25 Women's Basketball

Game Time: 1:00 PM
Game Duration: 1:53

Officials: Dee Karner, Denise Brooks, Rod Creech

Box score table for Louisville at South Fla. Columns include NO., Name, Min, FG, 3P, FT, Rebounds, Fouls, TP, AS, TO, ST, Blocks, +/-, and Shooting By Period.

Shooting By Period table for Louisville at South Fla. Columns include 1st FG%, 2nd FG%, 3rd FG%, 4th FG%, GM FG%, and FT%.

Box score table for Louisville - 107. Columns include NO., Name, Min, FG, 3P, FT, Rebounds, Fouls, TP, AS, TO, ST, Blocks, +/-, and Shooting By Period.

Shooting By Period table for Louisville - 107. Columns include 1st FG%, 2nd FG%, 3rd FG%, 4th FG%, GM FG%, and FT%.

Box score table for South Fla. - 60. Columns include NO., Name, Min, FG, 3P, FT, Rebounds, Fouls, TP, AS, TO, ST, Blocks, +/-, and Shooting By Period.

Shooting By Period table for South Fla. - 60. Columns include 1st FG%, 2nd FG%, 3rd FG%, 4th FG%, GM FG%, and FT%.

Summary statistics for Louisville - 107. Includes Biggest lead, Best Scoring Run, Lead Changes, Times Tied, Time with Lead, Points from Turnovers, MSU LOU, and Period by Period Scoring.

Summary statistics for South Fla. - 60. Includes Biggest lead, Best Scoring Run, Lead Changes, Times Tied, Time with Lead, Points from Turnovers, LOU USF, and Period by Period Scoring.



Official Basketball Box Score - Final
Louisville at Colorado
11/19/24 CU Events Center, Boulder
2024-25 Women's Basketball

Game Time: 1:00 PM
Game Duration: 2:16
Attendance: 4,487

Officials: Roy Gulbeyan, Chuck Gonzalez, In'Fari Robinson

Box score table for Louisville at Colorado. Columns include NO., Name, Min, FG, 3P, FT, Rebounds, Fouls, TP, AS, TO, ST, Blocks, +/-, and Shooting By Period.

Shooting By Period table for Louisville at Colorado. Columns include 1st FG%, 2nd FG%, 3rd FG%, 4th FG%, GM FG%, and FT%.

Box score table for Colorado - 71. Columns include NO., Name, Min, FG, 3P, FT, Rebounds, Fouls, TP, AS, TO, ST, Blocks, +/-, and Shooting By Period.

Shooting By Period table for Colorado - 71. Columns include 1st FG%, 2nd FG%, 3rd FG%, 4th FG%, GM FG%, and FT%.

Summary statistics for Colorado - 71. Includes Biggest lead, Best Scoring Run, Lead Changes, Times Tied, Time with Lead, Points from Turnovers, UL COLO, and Period by Period Scoring.

Official Basketball Box Score - Final
Oklahoma at Louisville
12/04/24 KFC Yum! Center, Louisville
2024-25 Women's Basketball

Game Time: 5:02 PM
Game Duration: 2:11
Attendance: 7,446

Officials: Denise Brooks, Tiffany Bird, Saf Esho

Box score table for Oklahoma at Louisville. Columns include NO., Name, Min, FG, 3P, FT, Rebounds, Fouls, TP, AS, TO, ST, Blocks, +/-, and Shooting By Period.

Shooting By Period table for Oklahoma at Louisville. Columns include 1st FG%, 2nd FG%, 3rd FG%, 4th FG%, GM FG%, and FT%.

Box score table for Louisville - 72. Columns include NO., Name, Min, FG, 3P, FT, Rebounds, Fouls, TP, AS, TO, ST, Blocks, +/-, and Shooting By Period.

Shooting By Period table for Louisville - 72. Columns include 1st FG%, 2nd FG%, 3rd FG%, 4th FG%, GM FG%, and FT%.

Summary statistics for Louisville - 72. Includes Biggest lead, Best Scoring Run, Lead Changes, Times Tied, Time with Lead, Points from Turnovers, OKL LOU, and Period by Period Scoring.

2024-25 BOX SCORES



Official Basketball Box Score - Final
(22) Louisville at (2) UConn
12/27/24 Barclays Center, Brooklyn, NY
2024 Shark Beauty Women's Championship Classic

Game Time: 9:40 PM
Game Duration: 1:52
Attendance: 9,114

Officials: Maj Forsberg, Kate Lukachik, Billy Smith

Box score for Louisville - 52 vs UConn - 85. Includes player stats for Nyla Harris, Mackenly Randolph, Olivia Cochran, Ja'Leah Williams, Tajanna Roberts, Merissah Russell, Elif Istanbuluoglu, Jayda Curry, Imari Berry, Isla Juffermans, Izela Arenas, Reagan Bender, Esosaa Imafidon, Anaya Hardy. Totals: 16-62 FG, 6-27 3P, 14-20 FT, 15 13 28 15 18 52 11 11 7 1 3 33.

Technical Fouls: Coach 3^9:36. Shooting By Period: 1st FG% 11-19 57.9%, 2nd FG% 7-16 44.4%, 3rd FG% 9-17 52.9%, 4th FG% 2-6 33.3%. GM FG% 33-63 52.4%, 3PT% 9-24 37.5%, FT% 10-16 62.5%.

Points from Lou/UConn, Turnovers, Period by Period Scoring, Lead Changes, Times Tied, Time with Lead.



Official Basketball Box Score - Final
Grambling at Louisville
12/22/24 KFC Yum! Center, Louisville
2024-25 Women's Basketball

Game Time: 7:02 PM
Game Duration: 1:54
Attendance: 7,355

Officials: Julio Krommhoek, Toni Rallo, Kim Hibbs

Box score for Grambling - 57 vs Louisville - 96. Includes player stats for Alyssa Phillip, Zaria Johnson, Arianna Moseley, Kahlia Warmley, Sharonica Hartsfield, Lillian Jackson, Lydia Freeman, Claire Simmons, Nicole Sandifer, Halima Salat. Totals: 19-54 FG, 3-7 3P, 16-22 FT, 14 15 29 19 22 57 8 27 8 1 3 -39.

Technical Fouls: NONE. Shooting By Period: 1st FG% 9-15 60.0%, 2nd FG% 1-2 50.0%, 3rd FG% 1-8 12.5%, 4th FG% 9-14 64.3%. GM FG% 19-54 35.2%, 3PT% 3-7 42.9%, FT% 16-22 72.7%.

Points from Lou/UConn, Turnovers, Period by Period Scoring, Lead Changes, Times Tied, Time with Lead.



Official Basketball Box Score - Final
NC State at Louisville
12/15/24 KFC Yum! Center, Louisville
2024-25 Women's Basketball

Game Time: 1:05 PM
Game Duration: 1:56
Attendance: 9,116

Officials: Dee Kattner, Chuck Gonzalez, Rod Creech

Box score for NC State - 72 vs Louisville - 87. Includes player stats for Malory Collier, Aizhia James, Madison Hayes, Saniya Rivers, Zoe Brooks, Lorena Awou, Zamareya Jones, Middle Cox, Tilda Trygger, Laci Steele, Deyvn Quigley. Totals: 29-66 FG, 7-19 3P, 15 38 53 20 18 72 14 23 9 4 2 30.

Technical Fouls: NONE. Shooting By Period: 1st FG% 8-15 53.3%, 2nd FG% 1-2 50.0%, 3rd FG% 8-17 47.1%, 4th FG% 5-18 27.8%. GM FG% 29-66 43.9%, 3PT% 7-19 36.8%, FT% 7-10 70.0%.

Points from NCS/LOU, Turnovers, Period by Period Scoring, Lead Changes, Times Tied, Time with Lead.



Official Basketball Box Score - Final
Louisville at Memphis
12/21/24 FedExForum, Memphis
2024-25 Women's Basketball

Game Time: 4:00 PM
Game Duration: 1:53
Attendance: 2,021

Officials: Ashley Gloss, Jules Gallen, Jeff Wooten

Box score for Louisville - 87 vs Memphis - 68. Includes player stats for Nyla Harris, Olivia Cochran, Ja'Leah Williams, Merissah Russell, Tajanna Roberts, Mackenly Randolph, Elif Istanbuluoglu, Jayda Curry, Imari Berry, Isla Juffermans, Izela Arenas, Reagan Bender. Totals: 36-60 FG, 8-18 3P, 7-10 FT, 9 26 35 23 16 87 21 19 10 3 0 19.

Technical Fouls: NONE. Shooting By Period: 1st FG% 9-15 60.0%, 2nd FG% 13-20 65.0%, 3rd FG% 4-6 66.7%, 4th FG% 6-10 60.0%. GM FG% 36-60 60.0%, 3PT% 8-18 44.4%, FT% 7-10 70.0%.

Points from LOU/MEM, Turnovers, Period by Period Scoring, Lead Changes, Times Tied, Time with Lead.

2024-25 BOX SCORES



Official Basketball Box Score - Final
Louisville at Boston College
12/29/24 Conte Forum, Chestnut Hill, Mass
2024-25 Women's Basketball

Game Time: 2:00 PM
Game Duration: 2:14
Attendance: 1,138

Officials: Karen Preato, Chuck Gonzalez, Teresa Shuck

Louisville - 86

Record: 8-5 (1-1)

Box score table for Louisville vs Boston College, including columns for NO. Name, Min, FG, 3P, FT, Rebounds, Fouls, TP, AS, TO, ST, Blocks, +/-.

Shooting By Period table for Louisville vs Boston College, showing FG, 3PT, FT percentages for 1st, 2nd, 3rd, 4th quarters and OT.

Dead Ball Rebounds: 6, 1

Boston College - 73

Record: 10-5 (1-1)

Box score table for Boston College vs Louisville, including columns for NO. Name, Min, FG, 3P, FT, Rebounds, Fouls, TP, AS, TO, ST, Blocks, +/-.

Shooting By Period table for Boston College vs Louisville, showing FG, 3PT, FT percentages for 1st, 2nd, 3rd, 4th quarters and OT.

Dead Ball Rebounds: 6, 1

Summary statistics table for Louisville vs Boston College, including Biggest lead, Best Scoring Run, Lead Changes, Times Tied, Time with Lead.

Points from Turnovers, Second Chance, Fast Breaks, Bench table for Louisville vs Boston College.

Period by Period Scoring table for Louisville vs Boston College, showing points scored in each quarter and OT.



Official Basketball Box Score - Final
Miami (FL) at Louisville
01/02/25 YFC Yuni Center, Louisville
2024-25 Women's Basketball

Game Time: 7:02 PM
Game Duration: 1:51
Attendance: 7,956

Officials: Katie Lukanich, Tiana Curcio, Tiffany Bird

Miami (FL) - 56

Record: 11-3 (1-2)

Box score table for Miami (FL) vs Louisville, including columns for NO. Name, Min, FG, 3P, FT, Rebounds, Fouls, TP, AS, TO, ST, Blocks, +/-.

Shooting By Period table for Miami (FL) vs Louisville, showing FG, 3PT, FT percentages for 1st, 2nd, 3rd, 4th quarters and OT.

Dead Ball Rebounds: 5, 0

Louisville - 74

Record: 9-5 (2-1)

Box score table for Louisville vs Miami (FL), including columns for NO. Name, Min, FG, 3P, FT, Rebounds, Fouls, TP, AS, TO, ST, Blocks, +/-.

Shooting By Period table for Louisville vs Miami (FL), showing FG, 3PT, FT percentages for 1st, 2nd, 3rd, 4th quarters and OT.

Dead Ball Rebounds: 1, 0

Summary statistics table for Louisville vs Miami (FL), including Biggest lead, Best Scoring Run, Lead Changes, Times Tied, Time with Lead.

Points from Turnovers, Second Chance, Fast Breaks, Bench table for Louisville vs Miami (FL).

Period by Period Scoring table for Louisville vs Miami (FL), showing points scored in each quarter and OT.



Official Basketball Box Score - Final
Louisville at Wake Forest
01/05/25 LJM Coliseum, Winston-Salem
2024-25 Women's Basketball

Game Time: 4:00 PM
Game Duration: 2:19
Attendance: 1,019

Officials: Maj Forsberg, Kevin Sparrock, Linda Mies

Louisville - 81

Record: 10-5 (3-1)

Box score table for Louisville vs Wake Forest, including columns for NO. Name, Min, FG, 3P, FT, Rebounds, Fouls, TP, AS, TO, ST, Blocks, +/-.

Shooting By Period table for Louisville vs Wake Forest, showing FG, 3PT, FT percentages for 1st, 2nd, 3rd, 4th quarters and OT.

Dead Ball Rebounds: 3, 0

Summary statistics table for Louisville vs Wake Forest, including Biggest lead, Best Scoring Run, Lead Changes, Times Tied, Time with Lead.

Points from Turnovers, Second Chance, Fast Breaks, Bench table for Louisville vs Wake Forest.

Period by Period Scoring table for Louisville vs Wake Forest, showing points scored in each quarter and OT.



Official Basketball Box Score - Final
Louisville at Pittsburgh
01/09/25 Petersen Events Center, Pittsburgh
2024-25 Women's Basketball

Game Time: 6:00 PM
Game Duration: 1:55
Attendance: 357

Officials:

Louisville - 65

Record: 11-5 (4-1)

Box score table for Louisville vs Pittsburgh, including columns for NO. Name, Min, FG, 3P, FT, Rebounds, Fouls, TP, AS, TO, ST, Blocks, +/-.

Shooting By Period table for Louisville vs Pittsburgh, showing FG, 3PT, FT percentages for 1st, 2nd, 3rd, 4th quarters and OT.

Dead Ball Rebounds: 2, 0

Pittsburgh - 56

Record: 8-9 (0-4)

Box score table for Pittsburgh vs Louisville, including columns for NO. Name, Min, FG, 3P, FT, Rebounds, Fouls, TP, AS, TO, ST, Blocks, +/-.

Shooting By Period table for Pittsburgh vs Louisville, showing FG, 3PT, FT percentages for 1st, 2nd, 3rd, 4th quarters and OT.

Dead Ball Rebounds: 2, 0

Summary statistics table for Pittsburgh vs Louisville, including Biggest lead, Best Scoring Run, Lead Changes, Times Tied, Time with Lead.

Points from Turnovers, Second Chance, Fast Breaks, Bench table for Pittsburgh vs Louisville.

Period by Period Scoring table for Pittsburgh vs Louisville, showing points scored in each quarter and OT.

Summary statistics table for Louisville vs Wake Forest, including Biggest lead, Best Scoring Run, Lead Changes, Times Tied, Time with Lead.

Points from Turnovers, Second Chance, Fast Breaks, Bench table for Louisville vs Wake Forest.

Period by Period Scoring table for Louisville vs Wake Forest, showing points scored in each quarter and OT.

2024-25 BOX SCORES



Official Basketball Box Score - Final
Georgia Tech at Louisville
01/22/25 KFC Yum! Center, Louisville
2024-25 Women's Basketball

Game Time: 4:00 PM
Game Duration: 1:55
Attendance: 8,917

Officials: Maddow Overstreet, Michael Price, Safi Esho

Georgia Tech - 60
Record: 15-2 (3-2)
Table with columns: NO. Name, Min, FG, 3P, FT, Rebounds, Fouls, TP, AS, TO, ST, Blocks, +/-
Includes shooting by period and technical fouls.

Louisville - 69
Record: 12-5 (5-1)
Table with columns: NO. Name, Min, FG, 3P, FT, Rebounds, Fouls, TP, AS, TO, ST, Blocks, +/-
Includes shooting by period and technical fouls.

Summary statistics for Georgia Tech vs Louisville
Includes: Biggest lead, Best Scoring Run, Lead Changes, Times Tied, Time with Lead, Points from Turnovers, Second Chance, Fast Breaks, Bench, Period by Period Scoring.



Official Basketball Box Score - Final
Syracuse at Louisville
01/16/25 KFC Yum! Center, Louisville
2024-25 Women's Basketball

Game Time: 7:02 PM
Game Duration: 1:53
Attendance: 7,442

Officials: Dee Kanner, Billy Smith, Teresa Slack

Syracuse - 62
Record: 7-10 (1-5)
Table with columns: NO. Name, Min, FG, 3P, FT, Rebounds, Fouls, TP, AS, TO, ST, Blocks, +/-
Includes shooting by period and technical fouls.

Louisville - 72
Record: 13-5 (6-1)
Table with columns: NO. Name, Min, FG, 3P, FT, Rebounds, Fouls, TP, AS, TO, ST, Blocks, +/-
Includes shooting by period and technical fouls.

Summary statistics for Syracuse vs Louisville
Includes: Biggest lead, Best Scoring Run, Lead Changes, Times Tied, Time with Lead, Points from Turnovers, Second Chance, Fast Breaks, Bench, Period by Period Scoring.



Official Basketball Box Score - Final
Louisville at Virginia Tech
01/19/25 Cassell Coliseum, Blacksburg, Va.
2024-25 Women's Basketball

Game Time: 4:00 PM
Game Duration: 2:06
Attendance: 8,955

Officials: Tarrn Cruise, Kevin Sparrack, Jeff Wooten

Louisville - 65
Record: 13-6 (2-2)
Table with columns: NO. Name, Min, FG, 3P, FT, Rebounds, Fouls, TP, AS, TO, ST, Blocks, +/-
Includes shooting by period and technical fouls.

Virginia Tech - 70
Record: 13-5 (4-3)
Table with columns: NO. Name, Min, FG, 3P, FT, Rebounds, Fouls, TP, AS, TO, ST, Blocks, +/-
Includes shooting by period and technical fouls.

Summary statistics for Louisville vs Virginia Tech
Includes: Biggest lead, Best Scoring Run, Lead Changes, Times Tied, Time with Lead, Points from Turnovers, Second Chance, Fast Breaks, Bench, Period by Period Scoring.



Official Basketball Box Score - Final
Louisville at Virginia
01/26/25 John Paul Jones Arena, Charlottesville
Virginia vs Louisville Women's Basketball - NGSWS Day

Game Time: 2:00 PM
Game Duration: 1:51
Attendance: 5,551

Officials: Karen Presto, Chuck Gonzalez, Ashley Galloway

Louisville - 68
Record: 14-6 (7-2)
Table with columns: NO. Name, Min, FG, 3P, FT, Rebounds, Fouls, TP, AS, TO, ST, Blocks, +/-
Includes shooting by period and technical fouls.

Virginia - 65
Record: 11-10 (3-6)
Table with columns: NO. Name, Min, FG, 3P, FT, Rebounds, Fouls, TP, AS, TO, ST, Blocks, +/-
Includes shooting by period and technical fouls.

Summary statistics for Louisville vs Virginia
Includes: Biggest lead, Best Scoring Run, Lead Changes, Times Tied, Time with Lead, Points from Turnovers, Second Chance, Fast Breaks, Bench, Period by Period Scoring.

2024-25 BOX SCORES



Official Basketball Box Score - Final
Louisville at SMU
 01/30/25 Moody Coliseum, Dallas
 2024-25 Women's Basketball

Game Time: 7:00 PM
 Game Duration: 2:01
 Attendance: 1,148

Officials: Billy Smith, Meadow Overstreet, Jules Gallien

Louisville - 80		Record: 15-6 (8-2)													Shooting By Period		
NO.	Name	Min	FG M-A	3P M-A	FT M-A	Rebounds OR DR TOT	Fouls PF FD	TP	AS	TO	ST	Blocks BS BA	+/-	1 st FG%	3PT%	FT%	
2	Nyla Harris	F 27:32	4-5	0-0	6-6	4 0 4	2 3 14	2	2	3	1	0	14	1 st FG%	9-17	52.9%	
44	Olivia Cochran	F 16:50	4-7	0-0	0-0	1 4 5	5 1 8	2	1	0	0	0	1	3PT%	3-7	42.9%	
12	Ji'Leah Williams	G 18:32	0-0	0-0	0-0	0 0 0	0 0 0	0	3	2	1	1	0	FT%	0-0	0%	
22	Tajanna Roberts	G 34:51	9-14	2-5	2-3	2 2 4	1 2 22	5	3	4	0	0	3	2 nd FG%	7-15	46.7%	
30	Jayda Curry	G 29:30	5-9	3-5	2-2	0 2 2	3 3 15	4	2	1	0	0	-1	3PT%	2-4	50.0%	
0	Izela Arenas	G 23:57	4-11	3-6	0-0	0 1 1	0 2 11	2	2	1	1	0	13	FT%	4-5	80%	
1	Imari Berry	11:42	1-3	0-2	0-0	0 2 2	0 0 2	2	0	1	0	0	4	3 rd FG%	8-15	53.3%	
11	Elif Istanbuluoglu	12:34	1-4	0-0	0-0	1 1 2	1 1 2	1	2	0	0	1	-6	3PT%	2-4	50.0%	
13	Merissah Russell	12:13	1-2	0-1	0-0	0 2 2	4 0 2	0	0	0	0	0	-7	FT%	2-2	100%	
4	Mackeny Randolph	10:51	1-2	0-0	2-2	0 0 0	2 1 4	1	1	2	0	0	8	4 th FG%	6-10	60.0%	
15	Isla Juffermans	01:28	0-0	0-0	0-0	0 0 0	0 0 0	0	0	0	0	0	1	3PT%	1-4	25.0%	
Team						0 3 3		0						FT%	6-6	100%	
Totals		30:57	8-19	12-13	8 17 25	18 13 80	22	15	13	3	1	5		GM FG%	30-57	52.6%	
													3PT%	8-19	42.1%		
													FT%	12-13	92.3%		

Technical Fouls: NONE
 Dead Ball Rebounds: 1, 0

SMU - 75		Record: 10-12 (2-6)													Shooting By Period		
NO.	Name	Min	FG M-A	3P M-A	FT M-A	Rebounds OR DR TOT	Fouls PF FD	TP	AS	TO	ST	Blocks BS BA	+/-	1 st FG%	3PT%	FT%	
35	Jessica Peterson	C 35:26	7-14	0-0	1-2	6 3 9	1 2 15	0	4	1	0	0	-5	1 st FG%	7-14	50.0%	
1	Zanai Jones	G 36:28	3-6	1-3	4-4	0 1 1	3 2 11	5	4	0	1	0	3	3PT%	1-2	50.0%	
2	TK Pitts	G 31:29	1-3	0-1	3-4	1 6 7	1 2 5	2	3	1	0	1	-3	FT%	0-0	0%	
3	Nya Robertson	G 39:00	8-16	3-6	13-13	1 3 4	2 11 32	3	9	3	0	1	-5	2 nd FG%	5-12	41.7%	
4	Kaysia Woods	G 18:53	2-5	2-4	0-0	0 1 1	2 0 6	1	0	0	0	1	-20	3PT%	2-5	40.0%	
24	Donavia Hall	31:44	1-4	1-2	1-2	0 3 3	3 1 4	3	1	2	0	0	8	FT%	5-6	83.3%	
13	Sandra Magolico	04:34	1-1	0-0	0-0	0 1 1	1 0 2	0	0	0	0	0	0	3 rd FG%	5-12	41.7%	
22	Kylie Marshall	02:26	0-0	0-0	0-0	0 0 0	0 0 0	0	0	0	0	0	-3	3PT%	2-5	40.0%	
Team						3 1 4		0						FT%	7-8	87.5%	
Totals		23:49	7-16	22-25	11 19 30	13 18 75	14	21	7	1	3	-5		4 th FG%	6-11	54.5%	
													3PT%	2-4	50.0%		
													FT%	10-11	90.9%		
													GM FG%	23-49	46.9%		
													3PT%	7-16	43.8%		
													FT%	22-25	88.0%		

Technical Fouls: NONE
 Dead Ball Rebounds: 1, 0

	LOU	SMU	Points from Turnovers	LOU	SMU	Period by Period Scoring					
			26	25		1st	2nd	3rd	4th	TOT	
Biggest lead	14 (4 th 9:23)	2 (2 nd 7:22)									
Best Scoring Run	11 (3 rd 8:37)	9 (4 th 7:33)									
Lead Changes	4					LOU	21	20	20	19	80
Times Tied	5					SMU	15	17	19	24	75
Time with Lead	33:43	02:32	Bench	21	6						

2024-25 Louisville Cardinals - Photo Roster



0 Izela Arenas
G | 5-9 | Fr.
Porter Ranch, Calif.
(Sierra Canyon)



1 Imari Berry
G | 5-10 | Fr.
Clarksville, Tenn.
(Clarksville)



2 Nyla Harris
F | 6-2 | Jr.
Orlando, Fla.
(Lake Highland Prep)



4 Mackenly Randolph
F | 6-0 | Fr.
Los Angeles, Calif.
(Sierra Canyon)



5 Rebekah Graves
G | 5-6 | Fr.
Keller, Texas
(Keller)



9 Anaya Hardy
F | 6-3 | Fr.
Detroit, Mich.
(Renaissance)



10 Eseosa Imafidon
C | 6-5 | R-Fr.
Benin-City, Nigeria
(Proctor Academy)



11 Elif Istanbuluoglu
F | 6-3 | So.
Istanbul, Turkey
(Fenerbahçe S.K.)



12 Ja'Leah Williams
G | 5-9 | Sr.
Pompano Beach, Fla.
(Miami)



13 Merissah Russell
G | 6-0 | Gr.
Ottawa, Ontario
(Cairine Wilson)



15 Isla Juffermans
F | 6-4 | Fr.
Coffs Harbour, Australia
(Centre of Excellence Australia)



21 Reagan Bender
G | 5-10 | Fr.
Louisville, Ky.
(Sacred Heart)



22 Tajianna Roberts
G | 5-10 | Fr.
San Diego, Calif.
(IMG Academy (FL))



30 Jayda Curry
G | 5-6 | Sr.
Corona, Calif.
(Cal)



44 Olivia Cochran
F | 6-3 | Gr.
Columbus, Ga.
(Carver)

Coaching Staff



Jeff Walz
Head Coach



Stephanie Norman
Associate Head Coach



Jonneshia Pineda
Associate Coach



Shay Robinson
Associate Coach



Amanda Butler
Assistant Coach



2024-25 Louisville Women's Basketball Combined Team Statistics All games

Game Records

Record	Overall	Home	Away	Neutral
ALL GAMES	15-6	6-2	8-2	1-2
CONFERENCE	8-2	3-1	5-1	0-0
NON-CONFERENCE	7-4	3-1	3-1	1-2

Score by Periods

Team	1st	2nd	3rd	4th	OT	TOT
Louisville	383	392	410	341	14	1540
Opponents	360	296	383	348	19	1406

Team Box Score

No.	Player	Total			3-Point		F-Throw		Rebounds				PF DQ A TO BLK STL PTS AVG									
		GP-GS	MIN	AVG	FG-FGA	FG%	3FG-3FGA	3FG%	FT-FTA	FT%	OFF	DEF	TOT	AVG	Pf	DQ	A	TO	BLK	STL	PTS	AVG
22	ROBERTS, Tajianna	21-21	628:30	29.9	106-255	.416	33-111	.297	28-42	.667	21	42	63	3.0	30	0	50	42	3	40	273	13.0
30	CURRY, Jayda	17-9	457:48	26.9	63-170	.371	34-99	.343	42-44	.955	3	31	34	2.0	47	1	52	26	0	17	202	11.9
2	HARRIS, Nyla	21-21	530:23	25.3	90-148	.608	0-0	.000	34-46	.739	62	54	116	5.5	46	2	15	42	8	21	214	10.2
44	COCHRAN, Olivia	21-21	538:28	25.6	86-174	.494	3-14	.214	38-52	.731	44	92	136	6.5	58	4	29	48	12	23	213	10.1
12	WILLIAMS, Ja'Leah	21-21	505:55	24.1	53-118	.449	3-14	.214	27-48	.563	35	55	90	4.3	47	0	85	47	6	35	136	6.5
1	BERRY, Imari	20-0	248:05	12.4	41-104	.394	23-59	.390	5-6	.833	8	39	47	2.4	22	0	20	18	5	10	110	5.5
13	RUSSELL, Merissah	21-3	367:26	17.5	37-97	.381	14-55	.255	22-27	.815	24	34	58	2.8	34	1	34	16	3	22	110	5.2
0	ARENAS, Izela	19-0	208:28	11.0	32-82	.390	15-41	.366	5-6	.833	8	17	25	1.3	20	0	16	21	1	9	84	4.4
11	ISTANBULLUOGLU, Elif	21-0	298:00	14.2	30-62	.484	1-16	.063	10-17	.588	14	28	42	2.0	27	0	10	23	0	8	71	3.4
4	RANDOLPH, Mackenly	20-9	235:50	11.8	25-58	.431	1-16	.063	12-20	.600	15	16	31	1.6	26	0	19	23	2	13	63	3.2
15	JUFFERMANS, Isla	14-0	115:40	8.3	14-32	.438	0-0	.000	9-13	.692	14	12	26	1.9	20	0	4	17	6	1	37	2.6
21	BENDER, Reagan	9-0	72:21	8.0	4-15	.267	4-13	.308	1-3	.333	1	3	4	0.4	6	0	2	5	0	3	13	1.4
9	HARDY, Anaya	8-0	22:39	2.8	4-8	.500	0-0	.000	1-6	.167	3	2	5	0.6	1	0	0	1	0	0	9	1.1
10	IMAFIDON, Eseosa	6-0	20:28	3.4	2-4	.500	0-0	.000	1-5	.200	7	4	11	1.8	1	0	1	1	5	0	5	0.8
Team											39	32	71				18					
Total		21	4250		587-1327	.442	131-438	.299	235-335	.701	298	461	759	36.1	385	8	337	348	51	202	1540	73.3
Opponents		21	4250		508-1150	.442	130-363	.358	260-362	.718	219	473	692	33.0	356	7	287	419	75	146	1406	67.0

Team Statistics

	LOU	OPP
Scoring	1540	1406
Points per game	73.3	67.0
Scoring margin	+6.4	-
Field goals-att	587-1327	508-1150
Field goal pct	.442	.442
3 point fg-att	131-438	130-363
3-point FG pct	.299	.358
3-pt FG made per game	6.2	6.2
Free throws-att	235-335	260-362
Free throw pct	.701	.718
F-Throws made per game	11.2	12.4
Rebounds	759	692
Rebounds per game	36.1	33.0
Rebounding margin	+3.2	-
Assists	337	287
Assists per game	16.0	13.7
Turnovers	348	419
Turnovers per game	16.6	20.0
Turnover margin	+3.4	-
Assist/turnover ratio	1.0	0.7
Steals	202	146
Steals per game	9.6	7.0
Blocks	51	75
Blocks per game	2.4	3.6
Winning streak	2	-
Home win streak	3	-
Attendance	63282	31216
Home games-Avg/Game	8-7910	10-3122
Neutral site-Avg/Game	-	3-4632

Team Results

Date	Opponent	Score	Att.
11/04/2024	vs UCLA	L 59-66	3472
11/08/2024	Southern Ind.	W 75-51	7666
11/12/2024	at UT Martin	W 86-64	1453
11/16/2024	at Kentucky	Lot 61-71	6117
11/21/2024	Morehead St.	W 107-70	7344
11/24/2024	vs South Fla.	W 64-60	1310
11/30/2024	at Colorado	W 79-71	3487
12/04/2024	Oklahoma	L 72-78	7446
12/07/2024	vs UConn	L 52-85	9114
12/12/2024	Grambling	W 96-57	7395
12/15/2024	NC State	L 42-72	9116
12/21/2024	at Memphis	W 87-68	2021
12/29/2024	at Boston College	W 86-73	1138
01/02/2025	Miami (FL)	W 74-56	7956
01/05/2025	at Wake Forest	Wot 81-76	1019
01/09/2025	at Pittsburgh	W 65-56	357
01/12/2025	Georgia Tech	W 69-60	8917
01/16/2025	Syracuse	W 72-62	7442
01/19/2025	at Virginia Tech	L 65-70	8925
01/26/2025	at Virginia	W 68-65	5551
01/30/2025	at SMU	W 80-75	1148



2024-25 Louisville Women's Basketball Combined Team Statistics In Conference games

Game Records

Record	Overall	Home	Away	Neutral
ALL GAMES	8-2	3-1	5-1	0-0
CONFERENCE	8-2	3-1	5-1	0-0
NON-CONFERENCE	0-0	0-0	0-0	0-0

Score by Periods

Team	1st	2nd	3rd	4th	OT	TOT
Louisville	176	162	202	151	11	702
Opponents	157	155	189	158	6	665

Team Box Score

No.	Player	Total			3-Point			F-Throw		Rebounds				PF		DQ		A		TO		BLK		STL		PTS		AVG	
		GP-GS	MIN	AVG	FG-FGA	FG%	3FG-3FGA	3FG%	FT-FTA	FT%	OFF	DEF	TOT	AVG	PF	DQ	A	TO	BLK	STL	PTS	AVG							
22	ROBERTS, Tajianna	10-10	326:56	32.7	56-137	.409	15-56	.268	10-15	.667	12	27	39	3.9	14	0	28	21	1	20	137	13.7							
30	CURRY, Jayda	10-9	312:52	31.3	38-117	.325	26-76	.342	26-27	.963	2	21	23	2.3	30	1	32	19	0	10	128	12.8							
2	HARRIS, Nyla	10-10	279:20	27.9	50-77	.649	0-0	.000	14-17	.824	34	30	64	6.4	21	0	5	21	1	9	114	11.4							
44	COCHRAN, Olivia	10-10	273:03	27.3	40-82	.488	1-4	.250	18-19	.947	23	35	58	5.8	30	1	18	20	4	13	99	9.9							
12	WILLIAMS, Ja'Leah	10-10	271:60	27.2	30-65	.462	1-6	.167	15-29	.517	19	34	53	5.3	22	0	35	21	3	18	76	7.6							
13	RUSSELL, Merissah	10-1	190:55	19.1	19-52	.365	4-24	.167	10-13	.769	16	17	33	3.3	20	0	17	10	1	8	52	5.2							
0	ARENAS, Izela	9-0	82:53	9.2	14-32	.438	6-15	.400	0-0	.000	2	7	9	1.0	11	0	6	8	1	6	34	3.8							
11	ISTANBULLUOGLU, Elif	10-0	116:10	11.6	12-26	.462	1-7	.143	3-5	.600	6	6	12	1.2	10	0	3	12	0	3	28	2.8							
1	BERRY, Imari	9-0	68:03	7.6	8-24	.333	3-15	.200	0-0	.000	0	8	8	0.9	7	0	2	3	1	4	19	2.1							
4	RANDOLPH, Mackenly	9-0	73:28	8.2	3-10	.300	0-3	.000	6-10	.600	5	5	10	1.1	10	0	4	10	0	6	12	1.3							
9	HARDY, Anaya	2-0	01:48	0.9	0-0	.000	0-0	.000	1-2	.500	1	0	1	0.5	0	0	0	0	0	1	0.5								
15	JUFFERMANS, Isla	4-0	15:50	4.0	0-4	.000	0-0	.000	2-2	1.000	2	3	5	1.3	3	0	0	4	1	0	2	0.5							
10	IMAFIDON, Eseosa	1-0	01:58	2.0	0-0	.000	0-0	.000	0-0	.000	0	0	0	0.0	0	0	0	0	0	0	0	0.0							
21	BENDER, Reagan	2-0	09:43	4.9	0-1	.000	0-0	.000	0-0	.000	1	0	1	0.5	1	0	0	1	0	1	0	0.0							
Team											18	11	29					9											
Total		10	2025		270-627	.431	57-206	.277	105-139	.755	141	204	345	34.5	179	2	150	159	13	98	702	70.2							
Opponents		10	2025		243-523	.465	57-160	.356	122-163	.748	91	220	311	31.1	152	4	130	193	36	70	665	66.5							

Team Statistics

	LOU	OPP
Scoring	702	665
Points per game	70.2	66.5
Scoring margin	+3.7	-
Field goals-att	270-627	243-523
Field goal pct	.431	.465
3 point fg-att	57-206	57-160
3-point FG pct	.277	.356
3-pt FG made per game	5.7	5.7
Free throws-att	105-139	122-163
Free throw pct	.755	.748
F-Throws made per game	10.5	12.2
Rebounds	345	311
Rebounds per game	34.5	31.1
Rebounding margin	+3.4	-
Assists	150	130
Assists per game	15.0	13.0
Turnovers	159	193
Turnovers per game	15.9	19.3
Turnover margin	+3.4	-
Assist/turnover ratio	0.9	0.7
Steals	98	70
Steals per game	9.8	7.0
Blocks	13	36
Blocks per game	1.3	3.6
Winning streak	2	-
Home win streak	3	-
Attendance	33431	18138
Home games-Avg/Game	4-8358	6-3023
Neutral site-Avg/Game	-	0-0

Team Results

Date	Opponent	Score	Att.
12/15/2024	NC State	L 42-72	9116
12/29/2024	at Boston College	W 86-73	1138
01/02/2025	Miami (FL)	W 74-56	7956
01/05/2025	at Wake Forest	Wot 81-76	1019
01/09/2025	at Pittsburgh	W 65-56	357
01/12/2025	Georgia Tech	W 69-60	8917
01/16/2025	Syracuse	W 72-62	7442
01/19/2025	at Virginia Tech	L 65-70	8925
01/26/2025	at Virginia	W 68-65	5551
01/30/2025	at SMU	W 80-75	1148