



Stanford at Notre Dame

02/06/25 Purcell Pavilion at the Joyce Center, Notre Dame
2024-25 Women's Basketball

Game Time: 8:30 PM
Game Duration: 1:41
Attendance: 7,528

Officials: Dee Kantner, Karen Preato, Cameron Inouye

Stanford - 47

Record: 11-11 (3-8)

| NO. | Name | F | Min | FG | | | 3P | | | FT | | | Rebounds | | | Fouls | | TP | AS | TO | ST | Blocks | | +/- |
|---------------|-----------------------|---|-------|------|-------|------|-----|----|-----|----|----|----|----------|---|----|-------|---|----|----|----|----|--------|-----|-----|
| | | | | M-A | M-A | M-A | OR | DR | TOT | PF | FD | BS | BA | | | | | | | | | | | |
| 3 | Nunu Agara | F | 04:59 | 0-3 | 0-0 | 0-0 | 0 | 1 | 1 | 0 | 0 | 0 | 0 | 1 | 0 | 0 | 0 | 0 | 0 | 0 | 0 | 0 | -1 | |
| 6 | Shay Ijiwoye | G | 22:04 | 3-3 | 1-1 | 0-0 | 0 | 1 | 1 | 4 | 3 | 7 | 0 | 4 | 0 | 4 | 0 | 0 | 0 | 0 | 0 | -32 | | |
| 13 | Chloe Clardy | G | 26:13 | 3-10 | 1-3 | 2-2 | 0 | 1 | 1 | 2 | 3 | 9 | 2 | 3 | 1 | 0 | 2 | 3 | 1 | 0 | 2 | -32 | | |
| 20 | Elena Bosgana | G | 21:49 | 2-8 | 1-5 | 0-0 | 0 | 1 | 1 | 3 | 0 | 5 | 0 | 5 | 0 | 5 | 0 | 0 | 0 | 0 | 0 | -41 | | |
| 21 | Brooke Demetre | G | 26:27 | 2-8 | 1-6 | 0-0 | 1 | 3 | 4 | 4 | 0 | 5 | 0 | 4 | 2 | 0 | 0 | 0 | 0 | 0 | 0 | -34 | | |
| 40 | Courtney Ogden | | 32:59 | 3-8 | 0-0 | 0-0 | 2 | 5 | 7 | 2 | 0 | 6 | 2 | 3 | 0 | 0 | 0 | 0 | 0 | 0 | 0 | -37 | | |
| 34 | Tess Heal | | 26:48 | 4-10 | 2-6 | 0-0 | 0 | 2 | 2 | 1 | 1 | 10 | 2 | 2 | 2 | 1 | 1 | 2 | 1 | 1 | 1 | -28 | | |
| 22 | Mary Ashley Stevenson | | 21:34 | 1-3 | 0-1 | 1-1 | 3 | 1 | 4 | 1 | 3 | 3 | 1 | 1 | 0 | 0 | 0 | 1 | 0 | 0 | 1 | -35 | | |
| 45 | Kennedy Umeh | | 17:07 | 1-8 | 0-0 | 0-0 | 5 | 4 | 9 | 3 | 1 | 2 | 0 | 6 | 1 | 0 | 2 | 0 | 0 | 2 | 0 | -5 | | |
| Team | | | | | | | 3 | 5 | 8 | | | 0 | | 1 | | | | | | | | | | |
| Totals | | | | | 19-61 | 6-22 | 3-3 | 14 | 24 | 38 | 20 | 11 | 47 | 8 | 29 | 6 | 1 | 6 | | | | | -49 | |

Technical Fouls::NONE

| Shooting By Period | | |
|---------------------|-------|-------|
| 1 st FG% | 3-14 | 21.4% |
| 3PT% | 2-5 | 40.0% |
| FT% | 0-0 | 0% |
| 2 nd FG% | 3-12 | 25.0% |
| 3PT% | 1-5 | 20.0% |
| FT% | 0-0 | 0% |
| 3 rd FG% | 7-15 | 46.7% |
| 3PT% | 1-5 | 20.0% |
| FT% | 0-0 | 0% |
| 4 th FG% | 6-20 | 30.0% |
| 3PT% | 2-7 | 28.6% |
| FT% | 3-3 | 100% |
| GM FG% | 19-61 | 31.1% |
| 3PT% | 6-22 | 27.3% |
| FT% | 3-3 | 100% |

Dead Ball Rebounds: 0, 0

Notre Dame - 96

Record: 20-2 (11-0)

| NO. | Name | F | Min | FG | | | 3P | | | FT | | | Rebounds | | | Fouls | | TP | AS | TO | ST | Blocks | | +/- |
|---------------|-------------------|---|-------|------|-------|------|-------|----|-----|----|----|----|----------|----|----|-------|---|----|----|----|----|--------|--|-----|
| | | | | M-A | M-A | M-A | OR | DR | TOT | PF | FD | BS | BA | | | | | | | | | | | |
| 20 | Liatu King | F | 21:39 | 4-7 | 0-0 | 0-1 | 4 | 4 | 8 | 0 | 2 | 8 | 1 | 1 | 5 | 0 | 0 | 30 | | | | | | |
| 21 | Maddy Westbeld | F | 21:29 | 6-8 | 1-2 | 0-0 | 0 | 2 | 2 | 1 | 2 | 13 | 0 | 0 | 1 | 1 | 0 | 21 | | | | | | |
| 3 | Hannah Hidalgo | G | 30:06 | 9-16 | 1-4 | 5-5 | 1 | 1 | 2 | 3 | 5 | 24 | 5 | 2 | 3 | 0 | 0 | 44 | | | | | | |
| 5 | Olivia Miles | G | 26:20 | 6-14 | 4-6 | 4-4 | 0 | 7 | 7 | 2 | 3 | 20 | 4 | 2 | 1 | 0 | 0 | 40 | | | | | | |
| 11 | Sonia Citron | G | 30:51 | 4-8 | 1-3 | 0-0 | 0 | 5 | 5 | 0 | 1 | 9 | 5 | 2 | 1 | 0 | 0 | 30 | | | | | | |
| 8 | Cassandre Prosper | | 26:05 | 4-5 | 1-1 | 4-5 | 1 | 4 | 5 | 1 | 4 | 13 | 1 | 2 | 3 | 1 | 1 | 35 | | | | | | |
| 32 | Liza Karlen | | 17:35 | 2-4 | 1-1 | 0-0 | 1 | 2 | 3 | 0 | 0 | 5 | 1 | 0 | 1 | 2 | 0 | 33 | | | | | | |
| 13 | Kate Koval | | 17:16 | 1-3 | 0-0 | 2-2 | 0 | 1 | 1 | 3 | 3 | 4 | 1 | 2 | 1 | 2 | 0 | 15 | | | | | | |
| 15 | Luci Jensen | | 03:19 | 0-0 | 0-0 | 0-0 | 0 | 2 | 2 | 0 | 0 | 0 | 0 | 0 | 0 | 0 | 0 | -1 | | | | | | |
| 25 | Sarah Cernugel | | 03:19 | 0-0 | 0-0 | 0-0 | 0 | 0 | 0 | 0 | 0 | 0 | 0 | 1 | 0 | 0 | 0 | -1 | | | | | | |
| 10 | Bella Tehrani | | 02:01 | 0-0 | 0-0 | 0-0 | 0 | 0 | 0 | 1 | 0 | 0 | 0 | 0 | 0 | 0 | 0 | -1 | | | | | | |
| Team | | | | | | | 0 | 0 | 0 | | | 0 | | 0 | | | | | | | | | | |
| Totals | | | | | 36-65 | 9-17 | 15-17 | 7 | 28 | 35 | 11 | 20 | 96 | 18 | 12 | 16 | 6 | 1 | 49 | | | | | |

Technical Fouls::NONE

| Shooting By Period | | |
|---------------------|-------|-------|
| 1 st FG% | 7-19 | 36.8% |
| 3PT% | 1-4 | 25.0% |
| FT% | 2-2 | 100% |
| 2 nd FG% | 13-17 | 76.5% |
| 3PT% | 4-4 | 100% |
| FT% | 3-3 | 100% |
| 3 rd FG% | 10-18 | 55.6% |
| 3PT% | 2-4 | 50.0% |
| FT% | 4-5 | 80% |
| 4 th FG% | 6-11 | 54.5% |
| 3PT% | 2-5 | 40.0% |
| FT% | 6-7 | 85.7% |
| GM FG% | 36-65 | 55.4% |
| 3PT% | 9-17 | 52.9% |
| FT% | 15-17 | 88.2% |

Dead Ball Rebounds: 0, 0

| | STA | UND |
|------------------|---------------------------|---------------------------|
| Biggest lead | 0 (1 st 10:00) | 52 (4 th 6:27) |
| Best Scoring Run | 5 (4 th 5:20) | 20 (2 nd 2:39) |
| Lead Changes | 0 | |
| Times Tied | 1 | |
| Time with Lead | 00:00 | 38:06 |

| | STA | UND |
|---------------|-----|-----|
| Points from | | |
| Turnovers | 12 | 45 |
| Paint | 20 | 34 |
| Second Chance | 5 | 12 |
| Fast Breaks | 2 | 22 |
| Bench | 21 | 22 |

| | Period by Period Scoring | | | | |
|-----|--------------------------|-----|-----|-----|-----|
| | 1st | 2nd | 3rd | 4th | TOT |
| STA | 8 | 7 | 15 | 17 | 47 |
| UND | 17 | 33 | 26 | 20 | 96 |



Period 1

Quarter Starters:

| | | | | | |
|------------|-------------|-------------|-------------|--------------|---------------|
| UND | 3 Hidalgo H | 5 Miles O | 11 Citron S | 20 King L | 21 Westbeld M |
| STA | 3 Agara N | 6 Ijiwoye S | 13 Clardy C | 20 Bosgana E | 21 Demetre B |

| Game Time | UND | Score | Diff | STA |
|-----------|--|------------|----------|---|
| 10:00 | 21 WESTBELD M jumpball lost | | | 3 AGARA N jumpball won |
| 09:45 | 20 KING L steal (1) | | | 20 BOSGANA E turnover lost ball (1) |
| 09:22 | 20 KING L 2pt FG from turnover in the paint, driving layup missed | | | |
| 09:19 | 20 KING L offensive rebound (1) | | | |
| 09:10 | 5 MILES O 3pt FG from turnover second chance, jump shot made (3) | 3-0 | 3 | |
| 08:55 | | 3-3 | 0 | 6 IJIWOYE S 3pt FG , jump shot made (3) |
| 08:55 | | | | 3 AGARA N assist (1) |
| 08:44 | 5 MILES O 2pt FG in the paint, layup missed | | | |
| 08:41 | | | | 13 CLARDY C defensive rebound (1) |
| 08:40 | | | | 13 CLARDY C turnover bad pass (1) |
| 08:27 | 3 HIDALGO H 3pt FG from turnover, jump shot missed | | | |
| 08:24 | | | | 20 BOSGANA E defensive rebound (1) |
| 08:11 | | | | 3 AGARA N 2pt FG in the paint, turnaround jump shot missed |
| 08:09 | 20 KING L defensive rebound (2) | | | |
| 08:09 | jump ball situation | | | |
| 07:57 | 3 HIDALGO H 2pt FG in the paint, driving layup missed | | | |
| 07:55 | 20 KING L offensive rebound (3) | | | |
| 07:51 | 21 WESTBELD M 2pt FG second chance outside the paint, pull up jump shot made (2) | 5-3 | 2 | |
| 07:51 | 11 CITRON S assist (1) | | | |
| 07:25 | 21 WESTBELD M steal (1) | | | 20 BOSGANA E turnover lost ball (2) |
| 07:17 | 20 KING L 2pt FG from turnover outside the paint, jump shot made (2) | 7-3 | 4 | |
| 07:17 | 3 HIDALGO H assist (1) | | | |
| 06:53 | 3 HIDALGO H steal (1) | | | 13 CLARDY C turnover lost ball (2) |
| 06:48 | 3 HIDALGO H 3pt FG from turnover, jump shot missed | | | |
| 06:48 | | | | defensive rebound (3) |
| 06:48 | | | | 20 BOSGANA E substitution out |
| 06:48 | | | | 40 OGDEN C substitution in |
| 06:30 | | | | 13 CLARDY C 2pt FG outside the paint, pull up jump shot missed |
| 06:24 | | | | 40 OGDEN C offensive rebound (1) |
| 06:15 | | | | 3 AGARA N 2pt FG second chance in the paint, driving layup missed |
| 06:13 | 5 MILES O defensive rebound (1) | | | |
| 06:09 | 5 MILES O turnover bad pass (1) | | | |
| 06:09 | | | | 6 IJIWOYE S substitution out |
| 06:09 | | | | 34 HEAL T substitution in |
| 05:55 | | 7-6 | 1 | 13 CLARDY C 3pt FG from turnover, jump shot made (3) |
| 05:55 | | | | 34 HEAL T assist (1) |
| 05:36 | 3 HIDALGO H 2pt FG outside the paint, floating jump shot missed | | | |
| 05:32 | | | | 3 AGARA N defensive rebound (1) |



Officials: Dee Kantner, Karen Preato, Cameron Inouye

| Game Time | UND | Score | Diff | STA |
|-----------|--|-------------|----------|---|
| 05:29 | | | | 21 DEMETRE B 3pt FG , jump shot missed |
| 05:26 | 5 MILES O defensive rebound (2) | | | |
| 05:18 | 5 MILES O 2pt FG outside the paint, pull up jump shot missed | | | |
| 05:15 | | | | 21 DEMETRE B defensive rebound (1) |
| 05:05 | | | | 3 AGARA N 2pt FG in the paint, jump shot missed |
| 05:03 | 5 MILES O defensive rebound (3) | | | |
| 05:01 | 5 MILES O foul drawn (1) | | | 13 CLARDY C foul shooting (1 - 1) |
| 05:01 | 11 CITRON S substitution out | | | |
| 05:01 | 20 KING L substitution out | | | |
| 05:01 | 8 PROSPER C substitution in | | | |
| 05:01 | 32 KARLEN L substitution in | | | |
| 05:01 | | | | 3 AGARA N substitution out |
| 05:01 | | | | 22 STEVENSON M substitution in |
| 05:01 | 5 MILES O free throw fast break 1 - 2 made (4) | 8-6 | 2 | |
| 05:01 | 5 MILES O free throw fast break 2 - 2 made (5) | 9-6 | 3 | |
| 04:54 | | | | 13 CLARDY C 2pt FG in the paint, layup blocked |
| 04:54 | 32 KARLEN L block (1) | | | |
| 04:54 | | | | offensive rebound (7) |
| 04:54 | Timeout media | | | |
| 04:38 | 8 PROSPER C steal (1) | | | 40 OGDEN C turnover lost ball (1) |
| 04:25 | 21 WESTBELD M 2pt FG from turnover outside the paint, step back jump shot made (4) | 11-6 | 5 | |
| 04:25 | 5 MILES O assist (1) | | | |
| 04:06 | | | | 40 OGDEN C 2pt FG in the paint, layup missed |
| 04:04 | | | | 40 OGDEN C offensive rebound (2) |
| 03:59 | 5 MILES O steal (1) | | | 34 HEAL T turnover bad pass (1) |
| 03:56 | 8 PROSPER C turnover bad pass (1) | | | 13 CLARDY C steal (1) |
| 03:56 | 5 MILES O foul personal (1 - 1) | | | 13 CLARDY C foul drawn (1) |
| 03:56 | 5 MILES O substitution out | | | |
| 03:56 | 21 WESTBELD M substitution out | | | |
| 03:56 | 11 CITRON S substitution in | | | |
| 03:56 | 13 KOVAL K substitution in | | | |
| 03:43 | | | | 21 DEMETRE B 3pt FG from turnover, jump shot missed |
| 03:40 | 8 PROSPER C defensive rebound (1) | | | |
| 03:34 | 13 KOVAL K foul drawn (1) | | | 13 CLARDY C foul personal (2 - 2) |
| 03:34 | | | | 13 CLARDY C substitution out |
| 03:34 | | | | 22 STEVENSON M substitution out |
| 03:34 | | | | 6 IJIWOYE S substitution in |
| 03:34 | | | | 45 UMEH K substitution in |
| 03:28 | 3 HIDALGO H 3pt FG , jump shot missed | | | |
| 03:26 | | | | defensive rebound (9) |
| 03:19 | 8 PROSPER C foul drawn (1) | | | 21 DEMETRE B foul offensive (1 - 3) |
| 03:19 | | | | 21 DEMETRE B turnover offensive (1) |
| 03:19 | | | | 21 DEMETRE B substitution out |
| 03:19 | | | | 22 STEVENSON M substitution in |
| 03:05 | 13 KOVAL K 2pt FG from turnover in the paint, hook shot missed | | | |
| 03:02 | | | | 40 OGDEN C defensive rebound (3) |
| 02:57 | 13 KOVAL K foul personal (1 - 2) | | | 45 UMEH K foul drawn (1) |
| 02:57 | | | | 34 HEAL T substitution out |



Official Basketball Play by Play - 1st Period
Stanford at Notre Dame
 02/06/25 Purcell Pavilion at the Joyce Center, Notre Dame
 2024-25 Women's Basketball

Game Time: 8:30 PM
Game Duration: 1:41
Attendance: 7,528

Officials: Dee Kantner, Karen Preato, Cameron Inouye

| Game Time | UND | Score | Diff | STA |
|----------------------|--|-------------|----------|---|
| 02:57 | | | | 20 BOSGANA E substitution in |
| 02:52 | | | | 20 BOSGANA E 3pt FG , jump shot missed |
| 02:48 | | | | 45 UMEH K offensive rebound (1) |
| 02:47 | | | | 45 UMEH K turnover travel (1) |
| 02:36 | 11 CITRON S 2pt FG from turnover in the paint, layup made (2) | 13-6 | 7 | |
| 02:36 | 13 KOVAL K assist (1) | | | |
| 02:27 | | | | 45 UMEH K turnover travel (2) |
| 02:27 | 8 PROSPER C substitution out | | | |
| 02:27 | 13 KOVAL K substitution out | | | |
| 02:27 | 5 MILES O substitution in | | | |
| 02:27 | 20 KING L substitution in | | | |
| 02:16 | 32 KARLEN L 2pt FG from turnover outside the paint, jump shot missed | | | |
| 02:13 | | | | 6 IJIWOYE S defensive rebound (1) |
| 01:53 | | 13-8 | 5 | 40 OGDEN C 2pt FG in the paint, driving layup made (2) |
| 01:35 | 3 HIDALGO H 2pt FG outside the paint, jump shot missed | | | |
| 01:32 | 20 KING L offensive rebound (4) | | | |
| 01:31 | 3 HIDALGO H 2pt FG second chance outside the paint, jump shot made (2) | 15-8 | 7 | |
| 01:31 | 20 KING L assist (1) | | | |
| 01:10 | 5 MILES O foul personal (2 - 3) | | | 22 STEVENSON M foul drawn (1) |
| 01:10 | 32 KARLEN L substitution out | | | |
| 01:10 | 21 WESTBELD M substitution in | | | |
| 01:10 | | | | 22 STEVENSON M substitution out |
| 01:10 | | | | 21 DEMETRE B substitution in |
| 01:10 | | | | 20 BOSGANA E turnover bad pass (3) |
| 01:05 | 20 KING L 2pt FG fast break from turnover in the paint, layup made (4) | 17-8 | 9 | |
| 01:05 | 5 MILES O assist (2) | | | |
| 00:35 | | | | 45 UMEH K 2pt FG in the paint, layup missed |
| 00:33 | | | | 45 UMEH K offensive rebound (2) |
| 00:32 | | | | 45 UMEH K 2pt FG second chance in the paint, layup missed |
| 00:31 | 21 WESTBELD M defensive rebound (1) | | | |
| 00:31 | 21 WESTBELD M foul drawn (1) | | | 21 DEMETRE B foul personal (2 - 4) |
| 00:31 | | | | 21 DEMETRE B substitution out |
| 00:31 | | | | 22 STEVENSON M substitution in |
| 00:01 | 5 MILES O 2pt FG in the paint, layup missed | | | |
| 00:00 | | | | 45 UMEH K defensive rebound (3) |
| END OF PERIOD | | | | |
| UND 17-8 STA | | | | |



Stanford at Notre Dame

02/06/25 Purcell Pavilion at the Joyce Center, Notre Dame
2024-25 Women's Basketball

Game Time: 8:30 PM
Game Duration: 1:41
Attendance: 7,528

Officials: Dee Kantner, Karen Preato, Cameron Inouye

Stanford - 8

| NO. | Name | F/G | Min | FG | | | Rebounds | | | Fouls | | TP | AS | TO | ST | Blocks | | +/- |
|---------------|-----------------------|-----|-------|------|-----|-----|----------|----|-----|-------|----|----|----|----|----|--------|----|-----|
| | | | | M-A | M-A | M-A | OR | DR | TOT | PF | FD | | | | | BS | BA | |
| 3 | Nunu Agara | F | 04:59 | 0-3 | 0-0 | 0-0 | 0 | 1 | 1 | 0 | 0 | 0 | 1 | 0 | 0 | 0 | 0 | -1 |
| 6 | Shay Ijiwoye | G | 07:25 | 1-1 | 1-1 | 0-0 | 0 | 1 | 1 | 0 | 0 | 3 | 0 | 0 | 0 | 0 | 0 | -8 |
| 13 | Chloe Clardy | G | 06:26 | 1-3 | 1-1 | 0-0 | 0 | 1 | 1 | 2 | 1 | 3 | 0 | 2 | 1 | 0 | 1 | -5 |
| 20 | Elena Bosgana | G | 06:09 | 0-1 | 0-1 | 0-0 | 0 | 1 | 1 | 0 | 0 | 0 | 0 | 3 | 0 | 0 | 0 | -8 |
| 21 | Brooke Demetre | G | 07:20 | 0-2 | 0-2 | 0-0 | 0 | 1 | 1 | 2 | 0 | 0 | 0 | 1 | 0 | 0 | 0 | -7 |
| 40 | Courtney Ogden | | 06:48 | 1-2 | 0-0 | 0-0 | 2 | 1 | 3 | 0 | 0 | 2 | 0 | 1 | 0 | 0 | 0 | -5 |
| 34 | Tess Heal | | 03:12 | 0-0 | 0-0 | 0-0 | 0 | 0 | 0 | 0 | 0 | 0 | 1 | 1 | 0 | 0 | 0 | -1 |
| 22 | Mary Ashley Stevenson | | 04:07 | 0-0 | 0-0 | 0-0 | 0 | 0 | 0 | 0 | 1 | 0 | 0 | 0 | 0 | 0 | 0 | -6 |
| 45 | Kennedy Umeh | | 03:34 | 0-2 | 0-0 | 0-0 | 2 | 1 | 3 | 0 | 1 | 0 | 0 | 2 | 0 | 0 | 0 | -4 |
| Team | | | | | | | 1 | 2 | 3 | | | 0 | | 0 | | | | |
| Totals | | | | 3-14 | 2-5 | 0-0 | 5 | 9 | 14 | 4 | 3 | 8 | 2 | 10 | 1 | 0 | 1 | -9 |

| Shooting By Period | | |
|--------------------|------|-------|
| 1st FG% | 3-14 | 21.4% |
| 3PT% | 2-5 | 40.0% |
| FT% | 0-0 | 0% |
| GM FG% | 3-14 | 21.4% |
| 3PT% | 2-5 | 40.0% |
| FT% | 0-0 | 0.0% |

Dead Ball Rebounds: 0, 0

Technical Fouls::NONE

Notre Dame - 17

| NO. | Name | F/G | Min | FG | | | Rebounds | | | Fouls | | TP | AS | TO | ST | Blocks | | +/- |
|---------------|-------------------|-----|-------|------|-----|-----|----------|----|-----|-------|----|----|----|----|----|--------|----|-----|
| | | | | M-A | M-A | M-A | OR | DR | TOT | PF | FD | | | | | BS | BA | |
| 20 | Liatu King | F | 07:26 | 2-3 | 0-0 | 0-0 | 3 | 1 | 4 | 0 | 0 | 4 | 1 | 0 | 1 | 0 | 0 | 3 |
| 21 | Maddy Westbeld | F | 07:14 | 2-2 | 0-0 | 0-0 | 0 | 1 | 1 | 0 | 1 | 4 | 0 | 0 | 1 | 0 | 0 | 7 |
| 3 | Hannah Hidalgo | G | 10:00 | 1-7 | 0-3 | 0-0 | 0 | 0 | 0 | 0 | 0 | 2 | 1 | 0 | 1 | 0 | 0 | 9 |
| 5 | Olivia Miles | G | 08:31 | 1-4 | 1-1 | 2-2 | 0 | 3 | 3 | 2 | 1 | 5 | 2 | 1 | 1 | 0 | 0 | 7 |
| 11 | Sonia Citron | G | 08:55 | 1-1 | 0-0 | 0-0 | 0 | 0 | 0 | 0 | 0 | 2 | 1 | 0 | 0 | 0 | 0 | 5 |
| 8 | Cassandre Prosper | | 02:34 | 0-0 | 0-0 | 0-0 | 0 | 1 | 1 | 0 | 1 | 0 | 0 | 1 | 1 | 0 | 0 | 6 |
| 32 | Liza Karlen | | 03:51 | 0-1 | 0-0 | 0-0 | 0 | 0 | 0 | 0 | 0 | 0 | 0 | 0 | 0 | 1 | 0 | 6 |
| 13 | Kate Koval | | 01:29 | 0-1 | 0-0 | 0-0 | 0 | 0 | 0 | 1 | 1 | 0 | 1 | 0 | 0 | 0 | 0 | 2 |
| Team | | | | | | | 0 | 0 | 0 | | | 0 | | 0 | | | | |
| Totals | | | | 7-19 | 1-4 | 2-2 | 3 | 6 | 9 | 3 | 4 | 17 | 6 | 2 | 5 | 1 | 0 | 9 |

| Shooting By Period | | |
|--------------------|------|--------|
| 1st FG% | 7-19 | 36.8% |
| 3PT% | 1-4 | 25.0% |
| FT% | 2-2 | 100% |
| GM FG% | 7-19 | 36.8% |
| 3PT% | 1-4 | 25.0% |
| FT% | 2-2 | 100.0% |

Dead Ball Rebounds: 0, 0

Technical Fouls::NONE

| | STA | UND |
|------------------|---------------------------|--------------------------|
| Biggest lead | 0 (1 st 10:00) | 9 (1 st 1:05) |
| Best Scoring Run | 3(1 st 8:55) | 6(1 st 2:36) |
| Lead Changes | 0 | |
| Times Tied | 1 | |
| Time with Lead | 00:00 | 08:06 |

| Points from | STA | UND |
|---------------|-----|-----|
| Turnovers | 3 | 11 |
| Paint | 2 | 4 |
| Second Chance | 0 | 7 |
| Fast Breaks | 0 | 4 |
| Bench | 2 | 0 |

| Period by Period Scoring | | | | | |
|--------------------------|-----|-----|-----|-----|-----|
| | 1st | 2nd | 3rd | 4th | TOT |
| STA | 8 | 7 | 15 | 17 | 47 |
| UND | 17 | 33 | 26 | 20 | 96 |



Officials: Dee Kantner, Karen Preato, Cameron Inouye

Period 2

Quarter Starters:

| | | | | | |
|------------|-------------|--------------|----------------|------------|---------------|
| UND | 3 Hidalgo H | 8 Prosper C | 11 Citron S | 20 King L | 21 Westbeld M |
| STA | 6 Ijiwoye S | 20 Bosgana E | 22 Stevenson M | 40 Ogden C | 45 Umeh K |

| Game Time | UND | Score | Diff | STA |
|-----------|--|--------------|-----------|---|
| 10:00 | 5 MILES O substitution out | | | |
| 10:00 | 8 PROSPER C substitution in | | | |
| 09:52 | | | | 6 IJIWOYE S turnover bad pass (1) |
| 09:41 | 21 WESTBELD M 2pt FG from turnover outside the paint, pull up jump shot made (6) | 19-8 | 11 | |
| 09:41 | 11 CITRON S assist (2) | | | |
| 09:19 | | | | 40 OGDEN C 2pt FG in the paint, jump shot missed |
| 09:15 | 11 CITRON S defensive rebound (1) | | | |
| 09:09 | 21 WESTBELD M 2pt FG fast break in the paint, driving layup made (8) | 21-8 | 13 | |
| 09:09 | 3 HIDALGO H assist (2) | | | |
| 08:43 | | 21-10 | 11 | 6 IJIWOYE S 2pt FG in the paint, driving layup made (5) |
| 08:32 | 21 WESTBELD M 3pt FG , jump shot made (11) | 24-10 | 14 | |
| 08:32 | 3 HIDALGO H assist (3) | | | |
| 08:05 | | 24-13 | 11 | 20 BOSGANA E 3pt FG , jump shot made (3) |
| 08:05 | | | | 40 OGDEN C assist (1) |
| 07:44 | 8 PROSPER C 2pt FG in the paint, layup made (2) | 26-13 | 13 | |
| 07:24 | | | | 45 UMEH K 2pt FG in the paint, jump shot blocked |
| 07:24 | 21 WESTBELD M block (1) | | | |
| 07:20 | 11 CITRON S defensive rebound (2) | | | |
| 07:18 | 11 CITRON S 2pt FG outside the paint, floating jump shot missed | | | |
| 07:14 | | | | 22 STEVENSON M defensive rebound (1) |
| 07:14 | | | | Timeout 30 Sec |
| 07:14 | 3 HIDALGO H substitution out | | | |
| 07:14 | 5 MILES O substitution in | | | |
| 07:14 | | | | 6 IJIWOYE S substitution out |
| 07:14 | | | | 22 STEVENSON M substitution out |
| 07:14 | | | | 45 UMEH K substitution out |
| 07:14 | | | | 13 CLARDY C substitution in |
| 07:14 | | | | 21 DEMETRE B substitution in |
| 07:14 | | | | 34 HEAL T substitution in |
| 07:02 | | | | 20 BOSGANA E 3pt FG , jump shot missed |
| 06:59 | 5 MILES O defensive rebound (4) | | | |
| 06:54 | 8 PROSPER C 2pt FG fast break in the paint, driving layup made (4) | 28-13 | 15 | |
| 06:54 | 5 MILES O assist (3) | | | |
| 06:31 | 20 KING L steal (2) | | | 34 HEAL T turnover lost ball (2) |
| 06:21 | 5 MILES O foul drawn (2) | | | 40 OGDEN C foul personal (1 - 1) |
| 06:07 | 5 MILES O 3pt FG from turnover, jump shot made (8) | 31-13 | 18 | |
| 05:33 | | | | 13 CLARDY C 3pt FG , jump shot missed |
| 05:30 | 20 KING L defensive rebound (5) | | | |
| 05:25 | 20 KING L 2pt FG in the paint, jump shot missed | | | |
| 05:22 | | | | 40 OGDEN C defensive rebound (4) |



Officials: Dee Kantner, Karen Preato, Cameron Inouye

| Game Time | UND | Score | Diff | STA |
|-----------|--|--------------|-----------|---|
| 05:17 | | | | 21 DEMETRE B 3pt FG , jump shot missed |
| 05:15 | 20 KING L defensive rebound (6) | | | |
| 05:15 | 20 KING L foul drawn (1) | | | 20 BOSGANA E foul personal (1 - 2) |
| 05:15 | 21 WESTBELD M substitution out | | | |
| 05:15 | 32 KARLEN L substitution in | | | |
| 05:02 | 8 PROSPER C 2pt FG in the paint, jump shot blocked | | | |
| 05:02 | | | | 34 HEAL T block (1) |
| 04:58 | | | | 21 DEMETRE B defensive rebound (2) |
| 04:53 | jump ball situation | | | |
| 04:53 | 20 KING L steal (3) | | | 21 DEMETRE B turnover lost ball (2) |
| 04:30 | 5 MILES O 3pt FG from turnover, step back jump shot made (11) | 34-13 | 21 | |
| 04:16 | | | | 13 CLARDY C 2pt FG in the paint, layup blocked |
| 04:16 | 32 KARLEN L block (2) | | | |
| 04:15 | | | | offensive rebound (18) |
| 04:15 | 8 PROSPER C substitution out | | | |
| 04:15 | 20 KING L substitution out | | | |
| 04:15 | 3 HIDALGO H substitution in | | | |
| 04:15 | 13 KOVAL K substitution in | | | |
| 04:15 | | | | 13 CLARDY C substitution out |
| 04:15 | | | | 34 HEAL T substitution out |
| 04:15 | | | | 6 IJIWOYE S substitution in |
| 04:15 | | | | 45 UMEH K substitution in |
| 04:14 | 3 HIDALGO H foul personal (1 - 1) | | | 6 IJIWOYE S foul drawn (1) |
| 04:06 | 13 KOVAL K steal (1) | | | 45 UMEH K turnover lost ball (3) |
| 03:58 | 13 KOVAL K foul drawn (2) | | | 45 UMEH K foul personal (1 - 3) |
| 03:58 | | | | 45 UMEH K substitution out |
| 03:58 | | | | 22 STEVENSON M substitution in |
| 03:54 | 3 HIDALGO H 2pt FG from turnover in the paint, driving layup made (4) | 36-13 | 23 | |
| 03:45 | | | | 40 OGDEN C 2pt FG outside the paint, jump shot missed |
| 03:42 | 5 MILES O defensive rebound (5) | | | |
| 03:40 | 3 HIDALGO H 2pt FG fast break outside the paint, floating jump shot made (6) | 38-13 | 25 | |
| 03:40 | 3 HIDALGO H foul drawn (1) | | | 6 IJIWOYE S foul shooting (1 - 4) |
| 03:40 | 5 MILES O substitution out | | | |
| 03:40 | 8 PROSPER C substitution in | | | |
| 03:40 | | | | 20 BOSGANA E substitution out |
| 03:40 | | | | 40 OGDEN C substitution out |
| 03:40 | | | | 13 CLARDY C substitution in |
| 03:40 | | | | 34 HEAL T substitution in |
| 03:40 | 3 HIDALGO H free throw fast break 1 - 1 made (7) | 39-13 | 26 | |
| 03:32 | 8 PROSPER C steal (2) | | | 13 CLARDY C turnover bad pass (3) |
| 03:25 | 11 CITRON S 3pt FG from turnover, jump shot made (5) | 42-13 | 29 | |
| 02:54 | 11 CITRON S foul drawn (1) | | | 22 STEVENSON M foul offensive (1 - 5) |
| 02:54 | | | | 22 STEVENSON M turnover offensive (1) |
| 02:39 | 11 CITRON S 2pt FG from turnover in the paint, jump shot made (7) | 44-13 | 31 | |
| 02:39 | 3 HIDALGO H assist (4) | | | |
| 02:28 | | | | 21 DEMETRE B 3pt FG , jump shot missed |
| 02:25 | 11 CITRON S defensive rebound (3) | | | |



Official Basketball Play by Play - 2nd Period
Stanford at Notre Dame
 02/06/25 Purcell Pavilion at the Joyce Center, Notre Dame
 2024-25 Women's Basketball

Game Time: 8:30 PM
Game Duration: 1:41
Attendance: 7,528

Officials: Dee Kantner, Karen Preato, Cameron Inouye

| Game Time | UND | Score | Diff | STA |
|----------------------|---|--------------|-----------|---|
| 02:17 | jump ball situation | | | |
| 02:17 | 3 HIDALGO H turnover lost ball (1) | | | 21 DEMETRE B steal (1) |
| 02:17 | | | | 13 CLARDY C substitution out |
| 02:17 | | | | 20 BOSGANA E substitution in |
| 02:04 | | 44-15 | 29 | 6 IJIWOYE S 2pt FG from turnover in the paint, driving layup made (7) |
| 01:56 | 3 HIDALGO H 2pt FG outside the paint, pull up jump shot made (9) | 46-15 | 31 | |
| 01:41 | 8 PROSPER C steal (3) | | | 20 BOSGANA E turnover bad pass (4) |
| 01:36 | 8 PROSPER C turnover bad pass (2) | | | 21 DEMETRE B steal (2) |
| 01:22 | | | | 34 HEAL T 2pt FG from turnover in the paint, driving layup missed |
| 01:19 | 8 PROSPER C defensive rebound (2) | | | |
| 01:09 | 8 PROSPER C foul drawn (2) | | | 20 BOSGANA E foul shooting (2 - 6) |
| 01:09 | 11 CITRON S substitution out | | | |
| 01:09 | 5 MILES O substitution in | | | |
| 01:09 | | | | 20 BOSGANA E substitution out |
| 01:09 | | | | 40 OGDEN C substitution in |
| 01:09 | 8 PROSPER C free throw 1 - 2 made (5) | 47-15 | 32 | |
| 01:09 | 8 PROSPER C free throw 2 - 2 made (6) | 48-15 | 33 | |
| 00:58 | 3 HIDALGO H steal (2) | | | 6 IJIWOYE S turnover lost ball (2) |
| 00:54 | 3 HIDALGO H 2pt FG fast break from turnover in the paint, driving layup made (11) | 50-15 | 35 | |
| 00:30 | 32 KARLEN L steal (1) | | | 6 IJIWOYE S turnover bad pass (3) |
| 00:00 | 32 KARLEN L 2pt FG from turnover outside the paint, jump shot missed | | | |
| 00:00 | | | | defensive rebound (19) |
| END OF PERIOD | | | | |
| UND 50-15 STA | | | | |



Stanford at Notre Dame

02/06/25 Purcell Pavilion at the Joyce Center, Notre Dame
2024-25 Women's Basketball

Game Time: 8:30 PM
Game Duration: 1:41
Attendance: 7,528

Officials: Dee Kantner, Karen Preato, Cameron Inouye

Stanford - 7

Table with columns: NO., Name, Min, FG (M-A), 3P (M-A), FT (M-A), Rebounds (OR, DR, TOT), Fouls (PF, FD), TP, AS, TO, ST, Blocks (BS, BA), +/-

Shooting By Period table with columns: 2nd FG%, 3PT%, FT%, GM FG%, 3PT%, FT%

Dead Ball Rebounds: 0, 0

Technical Fouls::NONE

Notre Dame - 33

Table with columns: NO., Name, Min, FG (M-A), 3P (M-A), FT (M-A), Rebounds (OR, DR, TOT), Fouls (PF, FD), TP, AS, TO, ST, Blocks (BS, BA), +/-

Shooting By Period table with columns: 2nd FG%, 3PT%, FT%, GM FG%, 3PT%, FT%

Dead Ball Rebounds: 0, 0

Technical Fouls::NONE

Table with columns: STA, UND for Biggest lead, Best Scoring Run, Lead Changes, Times Tied, Time with Lead

Table with columns: Points from, Turnovers, Paint, Second Chance, Fast Breaks, Bench for STA, UND

Table with columns: 1st, 2nd, 3rd, 4th, TOT for STA, UND



Stanford at Notre Dame

02/06/25 Purcell Pavilion at the Joyce Center, Notre Dame
2024-25 Women's Basketball

Game Time: 8:30 PM
Game Duration: 1:41
Attendance: 7,528

Officials: Dee Kantner, Karen Preato, Cameron Inouye

Stanford - 15

| NO. | Name | F/G | Min | FG | | | Rebounds | | | Fouls | | TP | AS | TO | ST | Blocks | | +/- |
|---------------|-----------------------|-----|-------|------|------|-----|----------|----|-----|-------|----|----|----|----|----|--------|----|-----|
| | | | | M-A | M-A | M-A | OR | DR | TOT | PF | FD | | | | | BS | BA | |
| 3 | Nunu Agara | F | 04:59 | 0-3 | 0-0 | 0-0 | 0 | 1 | 1 | 0 | 0 | 0 | 1 | 0 | 0 | 0 | 0 | -1 |
| 6 | Shay Ijiwoye | G | 14:26 | 3-3 | 1-1 | 0-0 | 0 | 1 | 1 | 1 | 1 | 7 | 0 | 3 | 0 | 0 | 0 | -26 |
| 13 | Chloe Clardy | G | 10:48 | 1-5 | 1-2 | 0-0 | 0 | 1 | 1 | 2 | 1 | 3 | 0 | 3 | 1 | 0 | 2 | -19 |
| 20 | Elena Bosgana | G | 13:37 | 1-3 | 1-3 | 0-0 | 0 | 1 | 1 | 2 | 0 | 3 | 0 | 4 | 0 | 0 | 0 | -24 |
| 21 | Brooke Demetre | G | 14:34 | 0-4 | 0-4 | 0-0 | 0 | 2 | 2 | 2 | 0 | 0 | 0 | 2 | 2 | 0 | 0 | -29 |
| 40 | Courtney Ogden | | 14:17 | 1-4 | 0-0 | 0-0 | 2 | 2 | 4 | 1 | 0 | 2 | 1 | 1 | 0 | 0 | 0 | -25 |
| 34 | Tess Heal | | 09:51 | 0-1 | 0-0 | 0-0 | 0 | 0 | 0 | 0 | 0 | 0 | 1 | 2 | 0 | 1 | 0 | -19 |
| 22 | Mary Ashley Stevenson | | 10:51 | 0-0 | 0-0 | 0-0 | 0 | 1 | 1 | 1 | 1 | 0 | 0 | 1 | 0 | 0 | 0 | -24 |
| 45 | Kennedy Umeh | | 06:37 | 0-3 | 0-0 | 0-0 | 2 | 1 | 3 | 1 | 1 | 0 | 0 | 3 | 0 | 0 | 1 | -8 |
| Team | | | | | | | 2 | 3 | 5 | | | 0 | | 0 | | | | |
| Totals | | | | 6-26 | 3-10 | 0-0 | 6 | 13 | 19 | 10 | 4 | 15 | 3 | 19 | 3 | 1 | 3 | -35 |

| Shooting By Period | | |
|---------------------|------|-------|
| 1 st FG% | 3-14 | 21.4% |
| 3PT% | 2-5 | 40.0% |
| FT% | 0-0 | 0% |
| 2 nd FG% | 3-12 | 25.0% |
| 3PT% | 1-5 | 20.0% |
| FT% | 0-0 | 0% |
| GM FG% | 6-26 | 23.1% |
| 3PT% | 3-10 | 30.0% |
| FT% | 0-0 | 0.0% |

Dead Ball Rebounds: 0, 0

Technical Fouls::NONE

Notre Dame - 50

| NO. | Name | F/G | Min | FG | | | Rebounds | | | Fouls | | TP | AS | TO | ST | Blocks | | +/- |
|---------------|-------------------|-----|-------|-------|-----|-----|----------|----|-----|-------|----|----|----|----|----|--------|----|-----|
| | | | | M-A | M-A | M-A | OR | DR | TOT | PF | FD | | | | | BS | BA | |
| 20 | Liatu King | F | 13:11 | 2-4 | 0-0 | 0-0 | 3 | 3 | 6 | 0 | 1 | 4 | 1 | 0 | 3 | 0 | 0 | 15 |
| 21 | Maddy Westbeld | F | 11:59 | 5-5 | 1-1 | 0-0 | 0 | 1 | 1 | 0 | 1 | 11 | 0 | 0 | 1 | 1 | 0 | 16 |
| 3 | Hannah Hidalgo | G | 17:01 | 5-11 | 0-3 | 1-1 | 0 | 0 | 0 | 1 | 1 | 11 | 4 | 1 | 2 | 0 | 0 | 27 |
| 5 | Olivia Miles | G | 13:14 | 3-6 | 3-3 | 2-2 | 0 | 5 | 5 | 2 | 2 | 11 | 3 | 1 | 1 | 0 | 0 | 23 |
| 11 | Sonia Citron | G | 17:46 | 3-4 | 1-1 | 0-0 | 0 | 3 | 3 | 0 | 1 | 7 | 2 | 0 | 0 | 0 | 0 | 27 |
| 8 | Cassandre Prosper | | 11:59 | 2-3 | 0-0 | 2-2 | 0 | 2 | 2 | 0 | 2 | 6 | 0 | 2 | 3 | 0 | 1 | 28 |
| 32 | Liza Karlen | | 09:06 | 0-2 | 0-0 | 0-0 | 0 | 0 | 0 | 0 | 0 | 0 | 0 | 0 | 1 | 2 | 0 | 23 |
| 13 | Kate Koval | | 05:44 | 0-1 | 0-0 | 0-0 | 0 | 0 | 0 | 1 | 2 | 0 | 1 | 0 | 1 | 0 | 0 | 16 |
| Team | | | | | | | 0 | 0 | 0 | | | 0 | | 0 | | | | |
| Totals | | | | 20-36 | 5-8 | 5-5 | 3 | 14 | 17 | 4 | 10 | 50 | 11 | 4 | 12 | 3 | 1 | 35 |

| Shooting By Period | | |
|---------------------|-------|--------|
| 1 st FG% | 7-19 | 36.8% |
| 3PT% | 1-4 | 25.0% |
| FT% | 2-2 | 100% |
| 2 nd FG% | 13-17 | 76.5% |
| 3PT% | 4-4 | 100.0% |
| FT% | 3-3 | 100% |
| GM FG% | 20-36 | 55.6% |
| 3PT% | 5-8 | 62.5% |
| FT% | 5-5 | 100.0% |

Dead Ball Rebounds: 0, 0

Technical Fouls::NONE

| | STA | UND |
|------------------|---------------------------|---------------------------|
| Biggest lead | 0 (1 st 10:00) | 35 (2 nd 0:54) |
| Best Scoring Run | 3 (1 st 8:55) | 20 (2 nd 2:39) |
| Lead Changes | 0 | |
| Times Tied | 1 | |
| Time with Lead | 00:00 | 18:06 |

| Points from | STA | UND |
|---------------|-----|-----|
| Turnovers | 5 | 28 |
| Paint | 6 | 16 |
| Second Chance | 0 | 7 |
| Fast Breaks | 0 | 13 |
| Bench | 2 | 6 |

| | Period by Period Scoring | | | | |
|-----|--------------------------|-----|-----|-----|-----|
| | 1st | 2nd | 3rd | 4th | TOT |
| STA | 8 | 7 | 15 | 17 | 47 |
| UND | 17 | 33 | 26 | 20 | 96 |



Officials: Dee Kantner, Karen Preato, Cameron Inouye

Period 3

Quarter Starters:

| | | | | | |
|------------|-------------|-------------|--------------|--------------|---------------|
| UND | 3 Hidalgo H | 5 Miles O | 11 Citron S | 20 King L | 21 Westbeld M |
| STA | 6 Ijiwoye S | 13 Clardy C | 20 Bosgana E | 21 Demetre B | 40 Ogden C |

| Game Time | UND | Score | Diff | STA |
|-----------|---|--------------|-----------|---|
| 10:00 | 8 PROSPER C substitution out | | | |
| 10:00 | 13 KOVAL K substitution out | | | |
| 10:00 | 32 KARLEN L substitution out | | | |
| 10:00 | 11 CITRON S substitution in | | | |
| 10:00 | 20 KING L substitution in | | | |
| 10:00 | 21 WESTBELD M substitution in | | | |
| 10:00 | | | | 22 STEVENSON M substitution out |
| 10:00 | | | | 34 HEAL T substitution out |
| 10:00 | | | | 13 CLARDY C substitution in |
| 10:00 | | | | 20 BOSGANA E substitution in |
| 09:31 | 5 MILES O 3pt FG , jump shot made (14) | 53-15 | 38 | |
| 09:15 | 11 CITRON S steal (1) | | | 6 IJIWOYE S turnover bad pass (4) |
| 09:11 | 3 HIDALGO H 2pt FG fast break from turnover in the paint, driving layup made (13) | 55-15 | 40 | |
| 09:11 | 11 CITRON S assist (3) | | | |
| 09:11 | 3 HIDALGO H foul drawn (2) | | | 6 IJIWOYE S foul shooting (2 - 1) |
| 09:11 | 3 HIDALGO H free throw fast break 1 - 1 made (14) | 56-15 | 41 | |
| 08:57 | | 56-17 | 39 | 20 BOSGANA E 2pt FG in the paint, driving layup made (5) |
| 08:46 | 3 HIDALGO H foul offensive (2 - 1) | | | 6 IJIWOYE S foul drawn (2) |
| 08:46 | 3 HIDALGO H turnover offensive (2) | | | |
| 08:35 | | | | 20 BOSGANA E 2pt FG from turnover in the paint, layup missed |
| 08:32 | 11 CITRON S defensive rebound (4) | | | |
| 08:21 | 20 KING L 2pt FG outside the paint, jump shot missed | | | |
| 08:18 | | | | 21 DEMETRE B defensive rebound (3) |
| 08:08 | | | | 20 BOSGANA E 3pt FG , jump shot missed |
| 08:03 | | | | 21 DEMETRE B offensive rebound (4) |
| 08:02 | 3 HIDALGO H steal (3) | | | 21 DEMETRE B turnover lost ball (3) |
| 07:57 | 5 MILES O 2pt FG fast break from turnover in the paint, driving layup made (16) | 58-17 | 41 | |
| 07:43 | | 58-20 | 38 | 21 DEMETRE B 3pt FG , jump shot made (3) |
| 07:43 | | | | 13 CLARDY C assist (1) |
| 07:15 | 20 KING L 2pt FG outside the paint, jump shot made (6) | 60-20 | 40 | |
| 07:15 | 11 CITRON S assist (4) | | | |
| 06:57 | | | | 21 DEMETRE B turnover bad pass (4) |
| 06:57 | | | | 21 DEMETRE B substitution out |
| 06:57 | | | | 22 STEVENSON M substitution in |
| 06:57 | | | | 13 CLARDY C substitution out |
| 06:57 | | | | 34 HEAL T substitution in |
| 06:50 | 20 KING L turnover travel (1) | | | |
| 06:40 | | 60-22 | 38 | 40 OGDEN C 2pt FG from turnover outside the paint, pull up jump shot made (4) |
| 06:40 | | | | 34 HEAL T assist (2) |
| 06:31 | 5 MILES O 2pt FG in the paint, jump shot missed | | | |
| 06:28 | 20 KING L offensive rebound (7) | | | |



Officials: Dee Kantner, Karen Preato, Cameron Inouye

| Game Time | UND | Score | Diff | STA |
|-----------|---|--------------|-----------|--|
| 06:25 | 11 CITRON S 3pt FG second chance, jump shot missed | | | |
| 06:22 | 3 HIDALGO H offensive rebound (1) | | | |
| 06:21 | 3 HIDALGO H 2pt FG second chance in the paint, layup made (16) | 62-22 | 40 | |
| 06:21 | 3 HIDALGO H foul drawn (3) | | | 6 IJIWOYE S foul shooting (3 - 2) |
| 06:21 | 11 CITRON S substitution out | | | |
| 06:21 | 21 WESTBELD M substitution out | | | |
| 06:21 | 8 PROSPER C substitution in | | | |
| 06:21 | 32 KARLEN L substitution in | | | |
| 06:21 | | | | 6 IJIWOYE S substitution out |
| 06:21 | | | | 13 CLARDY C substitution in |
| 06:21 | 3 HIDALGO H free throw 1 - 1 made (17) | 63-22 | 41 | |
| 06:10 | | | | 20 BOSGANA E 2pt FG in the paint, driving layup missed |
| 06:07 | 8 PROSPER C defensive rebound (3) | | | |
| 05:57 | 8 PROSPER C foul drawn (3) | | | 40 OGDEN C foul shooting (2 - 3) |
| 05:57 | 8 PROSPER C free throw 1 - 2 made (7) | 64-22 | 42 | |
| 05:57 | 8 PROSPER C free throw 2 - 2 made (8) | 65-22 | 43 | |
| 05:37 | | | | 22 STEVENSON M 3pt FG , jump shot missed |
| 05:34 | 3 HIDALGO H defensive rebound (2) | | | |
| 05:27 | 3 HIDALGO H 2pt FG in the paint, driving layup made (19) | 67-22 | 45 | |
| 05:12 | | 67-24 | 43 | 34 HEAL T 2pt FG in the paint, driving layup made (2) |
| 05:12 | | | | 13 CLARDY C assist (2) |
| 05:04 | 5 MILES O 3pt FG , jump shot missed | | | |
| 05:00 | | | | 40 OGDEN C defensive rebound (5) |
| 04:44 | 20 KING L steal (4) | | | 20 BOSGANA E turnover bad pass (5) |
| 04:35 | 3 HIDALGO H 3pt FG from turnover, step back jump shot made (22) | 70-24 | 46 | |
| 04:17 | | | | 34 HEAL T 3pt FG , jump shot missed |
| 04:12 | 5 MILES O defensive rebound (6) | | | |
| 04:06 | 5 MILES O 2pt FG in the paint, driving layup missed | | | |
| 04:04 | 32 KARLEN L offensive rebound (1) | | | |
| 04:03 | 20 KING L 2pt FG second chance in the paint, layup made (8) | 72-24 | 48 | |
| 04:03 | 32 KARLEN L assist (1) | | | |
| 04:03 | 20 KING L foul drawn (2) | | | 34 HEAL T foul shooting (1 - 4) |
| 04:03 | | | | Timeout media |
| 04:03 | 5 MILES O substitution out | | | |
| 04:03 | 11 CITRON S substitution in | | | |
| 04:03 | | | | 20 BOSGANA E substitution out |
| 04:03 | | | | 22 STEVENSON M substitution out |
| 04:03 | | | | 21 DEMETRE B substitution in |
| 04:03 | | | | 45 UMEH K substitution in |
| 04:03 | 20 KING L free throw 1 - 1 missed | | | |
| 04:01 | | | | 40 OGDEN C defensive rebound (6) |
| 03:47 | | | | 45 UMEH K turnover 3 seconds (4) |
| 03:47 | 20 KING L substitution out | | | |
| 03:47 | 13 KOVAL K substitution in | | | |
| 03:36 | 3 HIDALGO H substitution out | | | |
| 03:36 | 32 KARLEN L substitution out | | | |
| 03:36 | 5 MILES O substitution in | | | |
| 03:36 | 21 WESTBELD M substitution in | | | |



Official Basketball Play by Play - 3rd Period
Stanford at Notre Dame
 02/06/25 Purcell Pavilion at the Joyce Center, Notre Dame
 2024-25 Women's Basketball

Game Time: 8:30 PM
Game Duration: 1:41
Attendance: 7,528

Officials: Dee Kantner, Karen Preato, Cameron Inouye

| Game Time | UND | Score | Diff | STA |
|----------------------|--|--------------|-----------|---|
| 03:22 | 5 MILES O 2pt FG from turnover outside the paint, step back jump shot missed | | | |
| 03:18 | | | | 45 UMEH K defensive rebound (4) |
| 03:10 | | 72-26 | 46 | 40 OGDEN C 2pt FG in the paint, floating jump shot made (6) |
| 02:53 | 11 CITRON S turnover bad pass (1) | | | 34 HEAL T steal (1) |
| 02:41 | 13 KOVAL K foul personal (2 - 2) | | | 34 HEAL T foul drawn (1) |
| 02:24 | | | | 13 CLARDY C 2pt FG from turnover outside the paint, jump shot missed |
| 02:21 | 21 WESTBELD M defensive rebound (2) | | | |
| 02:12 | 13 KOVAL K 2pt FG in the paint, jump shot made (2) | 74-26 | 48 | |
| 01:57 | | | | 45 UMEH K 2pt FG in the paint, layup missed |
| 01:54 | 13 KOVAL K defensive rebound (1) | | | |
| 01:49 | 5 MILES O turnover bad pass (2) | | | 34 HEAL T steal (2) |
| 01:43 | | 74-28 | 46 | 13 CLARDY C 2pt FG fast break from turnover outside the paint, pull up jump shot made (5) |
| 01:21 | 21 WESTBELD M 2pt FG outside the paint, jump shot missed | | | |
| 01:17 | | | | 40 OGDEN C defensive rebound (7) |
| 00:52 | | | | 13 CLARDY C 3pt FG , jump shot missed |
| 00:49 | 11 CITRON S defensive rebound (5) | | | |
| 00:43 | 11 CITRON S 2pt FG fast break in the paint, driving layup made (9) | 76-28 | 48 | |
| 00:43 | 5 MILES O assist (4) | | | |
| 00:17 | | 76-30 | 46 | 45 UMEH K 2pt FG in the paint, layup made (2) |
| 00:00 | 13 KOVAL K 2pt FG outside the paint, jump shot missed | | | |
| 00:00 | 8 PROSPER C offensive rebound (4) | | | |
| END OF PERIOD | | | | |
| UND 76-30 STA | | | | |



Stanford at Notre Dame

02/06/25 Purcell Pavilion at the Joyce Center, Notre Dame
2024-25 Women's Basketball

Game Time: 8:30 PM
Game Duration: 1:41
Attendance: 7,528

Officials: Dee Kantner, Karen Preato, Cameron Inouye

Stanford - 15

| NO. | Name | F | Min | FG | | | Rebounds | | | Fouls | | TP | AS | TO | ST | Blocks | | +/- |
|---------------|-----------------------|---|-------|------|-----|-----|----------|----|-----|-------|----|----|----|----|----|--------|----|-----|
| | | | | M-A | M-A | M-A | OR | DR | TOT | PF | FD | | | | | BS | BA | |
| 3 | Nunu Agara | F | 00:00 | 0-0 | 0-0 | 0-0 | 0 | 0 | 0 | 0 | 0 | 0 | 0 | 0 | 0 | 0 | 0 | 0 |
| 6 | Shay Ijiwoye | G | 03:39 | 0-0 | 0-0 | 0-0 | 0 | 0 | 0 | 2 | 1 | 0 | 0 | 1 | 0 | 0 | 0 | -5 |
| 13 | Chloe Clardy | G | 09:24 | 1-3 | 0-1 | 0-0 | 0 | 0 | 0 | 0 | 0 | 2 | 2 | 0 | 0 | 0 | 0 | -11 |
| 20 | Elena Bosgana | G | 05:57 | 1-4 | 0-1 | 0-0 | 0 | 0 | 0 | 0 | 0 | 2 | 0 | 1 | 0 | 0 | 0 | -13 |
| 21 | Brooke Demetre | G | 07:06 | 1-1 | 1-1 | 0-0 | 1 | 1 | 2 | 0 | 0 | 3 | 0 | 2 | 0 | 0 | 0 | -3 |
| 40 | Courtney Ogden | | 10:00 | 2-2 | 0-0 | 0-0 | 0 | 3 | 3 | 1 | 0 | 4 | 0 | 0 | 0 | 0 | 0 | -11 |
| 22 | Mary Ashley Stevenson | | 02:54 | 0-1 | 0-1 | 0-0 | 0 | 0 | 0 | 0 | 0 | 0 | 0 | 0 | 0 | 0 | 0 | -8 |
| 34 | Tess Heal | | 06:57 | 1-2 | 0-1 | 0-0 | 0 | 0 | 0 | 1 | 1 | 2 | 1 | 0 | 2 | 0 | 0 | -6 |
| 45 | Kennedy Umeh | | 04:03 | 1-2 | 0-0 | 0-0 | 0 | 1 | 1 | 0 | 0 | 2 | 0 | 1 | 0 | 0 | 0 | 2 |
| Team | | | | | | | 0 | 0 | 0 | | | 0 | | | | | | |
| Totals | | | | 7-15 | 1-5 | 0-0 | 1 | 5 | 6 | 4 | 2 | 15 | 3 | 5 | 2 | 0 | 0 | -11 |

| Shooting By Period | | |
|--------------------|------|-------|
| 3rd FG% | 7-15 | 46.7% |
| 3PT% | 1-5 | 20.0% |
| FT% | 0-0 | 0% |
| GM FG% | 7-15 | 46.7% |
| 3PT% | 1-5 | 20.0% |
| FT% | 0-0 | 0.0% |

Dead Ball Rebounds: 0, 0

Technical Fouls::NONE

Notre Dame - 26

| NO. | Name | F | Min | FG | | | Rebounds | | | Fouls | | TP | AS | TO | ST | Blocks | | +/- |
|---------------|-------------------|---|-------|-------|-----|-----|----------|----|-----|-------|----|----|----|----|----|--------|----|-----|
| | | | | M-A | M-A | M-A | OR | DR | TOT | PF | FD | | | | | BS | BA | |
| 20 | Liatu King | F | 06:13 | 2-3 | 0-0 | 0-1 | 1 | 0 | 1 | 0 | 1 | 4 | 0 | 1 | 1 | 0 | 0 | 13 |
| 21 | Maddy Westbeld | F | 07:15 | 0-1 | 0-0 | 0-0 | 0 | 1 | 1 | 0 | 0 | 0 | 0 | 0 | 0 | 0 | 0 | 3 |
| 3 | Hannah Hidalgo | G | 06:24 | 4-4 | 1-1 | 2-2 | 1 | 1 | 2 | 1 | 2 | 11 | 0 | 1 | 1 | 0 | 0 | 13 |
| 5 | Olivia Miles | G | 09:33 | 2-6 | 1-2 | 0-0 | 0 | 1 | 1 | 0 | 0 | 5 | 1 | 1 | 0 | 0 | 0 | 11 |
| 11 | Sonia Citron | G | 07:42 | 1-2 | 0-1 | 0-0 | 0 | 2 | 2 | 0 | 0 | 2 | 2 | 1 | 1 | 0 | 0 | 3 |
| 8 | Cassandre Prosper | | 06:21 | 0-0 | 0-0 | 2-2 | 1 | 1 | 2 | 0 | 1 | 2 | 0 | 0 | 0 | 0 | 0 | 6 |
| 32 | Liza Karlen | | 02:45 | 0-0 | 0-0 | 0-0 | 1 | 0 | 1 | 0 | 0 | 0 | 1 | 0 | 0 | 0 | 0 | 8 |
| 13 | Kate Koval | | 03:47 | 1-2 | 0-0 | 0-0 | 0 | 1 | 1 | 1 | 0 | 2 | 0 | 0 | 0 | 0 | 0 | -2 |
| Team | | | | | | | 0 | 0 | 0 | | | 0 | | | | | | |
| Totals | | | | 10-18 | 2-4 | 4-5 | 4 | 7 | 11 | 2 | 4 | 26 | 4 | 4 | 3 | 0 | 0 | 11 |

| Shooting By Period | | |
|--------------------|-------|-------|
| 3rd FG% | 10-18 | 55.6% |
| 3PT% | 2-4 | 50.0% |
| FT% | 4-5 | 80% |
| GM FG% | 10-18 | 55.6% |
| 3PT% | 2-4 | 50.0% |
| FT% | 4-5 | 80.0% |

Dead Ball Rebounds: 0, 0

Technical Fouls::NONE

| | STA | UND |
|------------------|---------------------------|---------------------------|
| Biggest lead | 0 (1 st 10:00) | 48 (3 rd 4:03) |
| Best Scoring Run | 3(3 rd 7:43) | 7(3 rd 5:27) |
| Lead Changes | 0 | |
| Times Tied | 0 | |
| Time with Lead | 00:00 | 09:31 |

| Points from | STA | UND |
|---------------|-----|-----|
| Turnovers | 4 | 8 |
| Paint | 8 | 14 |
| Second Chance | 0 | 5 |
| Fast Breaks | 2 | 7 |
| Bench | 8 | 4 |

| Period by Period Scoring | | | | | |
|--------------------------|-----|-----|-----|-----|-----|
| | 1st | 2nd | 3rd | 4th | TOT |
| STA | 8 | 7 | 15 | 17 | 47 |
| UND | 17 | 33 | 26 | 20 | 96 |



Period 4

Quarter Starters:

| | | | | | |
|------------|-------------|--------------|----------------|-----------|---------------|
| UND | 3 Hidalgo H | 5 Miles O | 11 Citron S | 20 King L | 21 Westbeld M |
| STA | 6 Ijiwoye S | 20 Bosgana E | 22 Stevenson M | 34 Heal T | 40 Ogden C |

| Game Time | UND | Score | Diff | STA |
|-----------|---|--------------|-----------|---|
| 10:00 | 8 PROSPER C substitution out | | | |
| 10:00 | 13 KOVAL K substitution out | | | |
| 10:00 | 3 HIDALGO H substitution in | | | |
| 10:00 | 20 KING L substitution in | | | |
| 10:00 | | | | 13 CLARDY C substitution out |
| 10:00 | | | | 21 DEMETRE B substitution out |
| 10:00 | | | | 45 UMEH K substitution out |
| 10:00 | | | | 6 IJIWOYE S substitution in |
| 10:00 | | | | 20 BOSGANA E substitution in |
| 10:00 | | | | 22 STEVENSON M substitution in |
| 09:38 | | | | 40 OGDEN C turnover bad pass (2) |
| 09:27 | 21 WESTBELD M foul drawn (2) | | | 6 IJIWOYE S foul personal (4 - 1) |
| 09:25 | 21 WESTBELD M 2pt FG from turnover outside the paint, jump shot made (13) | 78-30 | 48 | |
| 09:25 | 3 HIDALGO H assist (5) | | | |
| 09:20 | 3 HIDALGO H foul personal (3 - 1) | | | 6 IJIWOYE S foul drawn (3) |
| 09:20 | | | | 6 IJIWOYE S substitution out |
| 09:20 | | | | 13 CLARDY C substitution in |
| 09:03 | 21 WESTBELD M foul personal (1 - 2) | | | 22 STEVENSON M foul drawn (2) |
| 09:03 | | | | 20 BOSGANA E substitution out |
| 09:03 | | | | 22 STEVENSON M substitution out |
| 09:03 | | | | 21 DEMETRE B substitution in |
| 09:03 | | | | 45 UMEH K substitution in |
| 09:01 | 20 KING L steal (5) | | | 40 OGDEN C turnover bad pass (3) |
| 08:56 | 5 MILES O 2pt FG fast break from turnover in the paint, driving layup made (18) | 80-30 | 50 | |
| 08:35 | | | | 40 OGDEN C 2pt FG in the paint, layup missed |
| 08:32 | 20 KING L defensive rebound (8) | | | |
| 08:28 | 5 MILES O 3pt FG , jump shot missed | | | |
| 08:25 | | | | 34 HEAL T defensive rebound (1) |
| 08:14 | | 80-32 | 48 | 34 HEAL T 2pt FG in the paint, jump shot made (4) |
| 08:05 | 21 WESTBELD M 3pt FG , jump shot missed | | | |
| 08:02 | | | | 45 UMEH K defensive rebound (5) |
| 07:45 | | | | 45 UMEH K turnover lost ball (5) |
| 07:45 | 11 CITRON S substitution out | | | |
| 07:45 | 20 KING L substitution out | | | |
| 07:45 | 21 WESTBELD M substitution out | | | |
| 07:45 | 8 PROSPER C substitution in | | | |
| 07:45 | 13 KOVAL K substitution in | | | |
| 07:45 | 32 KARLEN L substitution in | | | |
| 07:45 | | | | 40 OGDEN C substitution out |
| 07:45 | | | | 45 UMEH K substitution out |
| 07:45 | | | | 20 BOSGANA E substitution in |
| 07:45 | | | | 22 STEVENSON M substitution in |



Officials: Dee Kantner, Karen Preato, Cameron Inouye

| Game Time | UND | Score | Diff | STA |
|-----------|--|--------------|-----------|--|
| 07:28 | 32 KARLEN L 2pt FG from turnover outside the paint, jump shot made (2) | 82-32 | 50 | |
| 07:28 | 8 PROSPER C assist (1) | | | |
| 07:15 | | 82-34 | 48 | 13 CLARDY C 2pt FG in the paint, driving layup made (7) |
| 07:00 | 3 HIDALGO H foul drawn (4) | | | 21 DEMETRE B foul shooting (3 - 2) |
| 07:00 | 3 HIDALGO H free throw 1 - 2 made (23) | 83-34 | 49 | |
| 07:00 | 3 HIDALGO H free throw 2 - 2 made (24) | 84-34 | 50 | |
| 06:50 | | | | 21 DEMETRE B 3pt FG , jump shot missed |
| 06:47 | | | | 22 STEVENSON M offensive rebound (2) |
| 06:36 | | | | 20 BOSGANA E 3pt FG second chance, jump shot missed |
| 06:33 | 5 MILES O defensive rebound (7) | | | |
| 06:27 | 5 MILES O foul drawn (3) | | | 20 BOSGANA E foul shooting (3 - 3) |
| 06:27 | | | | 20 BOSGANA E substitution out |
| 06:27 | | | | 22 STEVENSON M substitution out |
| 06:27 | | | | 40 OGDEN C substitution in |
| 06:27 | | | | 45 UMEH K substitution in |
| 06:27 | 5 MILES O free throw 1 - 2 made (19) | 85-34 | 51 | |
| 06:27 | 5 MILES O free throw 2 - 2 made (20) | 86-34 | 52 | |
| 06:27 | 5 MILES O substitution out | | | |
| 06:27 | 11 CITRON S substitution in | | | |
| 06:18 | 8 PROSPER C foul shooting (1 - 3) | | | 13 CLARDY C foul drawn (2) |
| 06:18 | | 86-35 | 51 | 13 CLARDY C free throw 1 - 2 made (8) |
| 06:18 | | 86-36 | 50 | 13 CLARDY C free throw 2 - 2 made (9) |
| 06:01 | 13 KOVAL K foul offensive (3 - 4) | | | 13 CLARDY C foul drawn (3) |
| 06:01 | 13 KOVAL K turnover offensive (1) | | | |
| 05:45 | | | | 45 UMEH K 2pt FG from turnover in the paint, layup blocked |
| 05:45 | 13 KOVAL K block (1) | | | |
| 05:41 | | | | 45 UMEH K offensive rebound (6) |
| 05:40 | | | | 45 UMEH K 2pt FG from turnover second chance in the paint, jump shot missed |
| 05:37 | 8 PROSPER C defensive rebound (5) | | | |
| 05:34 | jump ball situation | | | |
| 05:34 | | | | 21 DEMETRE B substitution out |
| 05:34 | | | | 22 STEVENSON M substitution in |
| 05:29 | 11 CITRON S 3pt FG , jump shot missed | | | |
| 05:26 | | | | 34 HEAL T defensive rebound (2) |
| 05:20 | | 86-39 | 47 | 34 HEAL T 3pt FG , jump shot made (7) |
| 05:00 | 32 KARLEN L 3pt FG , jump shot made (5) | 89-39 | 50 | |
| 05:00 | 11 CITRON S assist (5) | | | |
| 04:42 | 3 HIDALGO H foul drawn (5) | | | 45 UMEH K foul offensive (2 - 4) |
| 04:42 | | | | 45 UMEH K turnover offensive (6) |
| 04:42 | Timeout media | | | |
| 04:32 | 11 CITRON S turnover bad pass (2) | | | 45 UMEH K steal (1) |
| 04:20 | | | | 34 HEAL T 2pt FG from turnover in the paint, driving layup missed |
| 04:18 | | | | 22 STEVENSON M offensive rebound (3) |
| 04:00 | | | | 13 CLARDY C 2pt FG from turnover second chance outside the paint, jump shot missed |
| 03:56 | 32 KARLEN L defensive rebound (2) | | | |
| 03:51 | 3 HIDALGO H 2pt FG outside the paint, floating jump shot missed | | | |



Official Basketball Play by Play - 4th Period
Stanford at Notre Dame
 02/06/25 Purcell Pavilion at the Joyce Center, Notre Dame
 2024-25 Women's Basketball

Game Time: 8:30 PM
Game Duration: 1:41
Attendance: 7,528

Officials: Dee Kantner, Karen Preato, Cameron Inouye

| Game Time | UND | Score | Diff | STA |
|-----------|--|--------------|-----------|--|
| 03:48 | | | | 45 UMEH K defensive rebound (7) |
| 03:32 | | | | 45 UMEH K 2pt FG in the paint, hook shot missed |
| 03:29 | 32 KARLEN L defensive rebound (3) | | | |
| 03:22 | 11 CITRON S 2pt FG outside the paint, jump shot missed | | | |
| 03:19 | | | | defensive rebound (33) |
| 03:19 | 3 HIDALGO H substitution out | | | |
| 03:19 | 11 CITRON S substitution out | | | |
| 03:19 | 15 JENSEN L substitution in | | | |
| 03:19 | 25 CERNUGEL S substitution in | | | |
| 03:19 | | | | 13 CLARDY C substitution out |
| 03:19 | | | | 45 UMEH K substitution out |
| 03:19 | | | | 6 IJIWOYE S substitution in |
| 03:19 | | | | 21 DEMETRE B substitution in |
| 03:06 | | | | 40 OGDEN C 2pt FG outside the paint, jump shot missed |
| 03:04 | 15 JENSEN L defensive rebound (1) | | | |
| 02:55 | 8 PROSPER C 2pt FG in the paint, driving layup made (10) | 91-39 | 52 | |
| 02:55 | 8 PROSPER C foul drawn (4) | | | 21 DEMETRE B foul shooting (4 - 5) |
| 02:55 | 8 PROSPER C free throw 1 - 1 missed | | | |
| 02:55 | | | | defensive rebound (34) |
| 02:43 | | | | 34 HEAL T 3pt FG , jump shot blocked |
| 02:43 | 8 PROSPER C block (1) | | | |
| 02:43 | | | | offensive rebound (35) |
| 02:40 | | 91-41 | 50 | 21 DEMETRE B 2pt FG second chance outside the paint, jump shot made (5) |
| 02:40 | | | | 40 OGDEN C assist (2) |
| 02:28 | 25 CERNUGEL S turnover lost ball (1) | | | |
| 02:15 | | | | 21 DEMETRE B 2pt FG from turnover outside the paint, jump shot missed |
| 02:12 | 15 JENSEN L defensive rebound (2) | | | |
| 02:01 | 13 KOVAL K turnover bad pass (2) | | | |
| 02:01 | 32 KARLEN L substitution out | | | |
| 02:01 | 10 TEHRANI B substitution in | | | |
| 02:01 | | | | 21 DEMETRE B substitution out |
| 02:01 | | | | 45 UMEH K substitution in |
| 01:43 | | | | 34 HEAL T 3pt FG from turnover, jump shot missed |
| 01:39 | | | | 22 STEVENSON M offensive rebound (4) |
| 01:38 | | 91-43 | 48 | 22 STEVENSON M 2pt FG from turnover second chance in the paint, layup made (2) |
| 01:38 | 10 TEHRANI B foul shooting (1 - 5) | | | 22 STEVENSON M foul drawn (3) |
| 01:38 | | 91-44 | 47 | 22 STEVENSON M free throw 1 - 1 made (3) |
| 01:25 | 13 KOVAL K foul drawn (3) | | | 45 UMEH K foul personal (3 - 6) |
| 01:25 | 13 KOVAL K free throw 1 - 2 made (3) | 92-44 | 48 | |
| 01:25 | 13 KOVAL K free throw 2 - 2 made (4) | 93-44 | 49 | |
| 01:11 | | | | 34 HEAL T 3pt FG , jump shot missed |
| 01:08 | | | | 45 UMEH K offensive rebound (8) |
| 00:59 | jump ball situation | | | |
| 00:48 | | | | 22 STEVENSON M 2pt FG second chance outside the paint, jump shot blocked |
| 00:48 | 13 KOVAL K block (2) | | | |
| 00:47 | | | | 45 UMEH K offensive rebound (9) |



Official Basketball Play by Play - 4th Period
Stanford at Notre Dame
02/06/25 Purcell Pavilion at the Joyce Center, Notre Dame
2024-25 Women's Basketball

Game Time: 8:30 PM
Game Duration: 1:41
Attendance: 7,528

Officials: Dee Kantner, Karen Preato, Cameron Inouye

| Game Time | UND | Score | Diff | STA |
|----------------------|---|--------------|-----------|--|
| 00:47 | | | | turnover shot clock (29) |
| 00:36 | 8 PROSPER C 3pt FG from turnover, jump shot made (13) | 96-44 | 52 | |
| 00:21 | | 96-47 | 49 | 34 HEAL T 3pt FG , jump shot made (10) |
| 00:21 | | | | 22 STEVENSON M assist (1) |
| END OF GAME | | | | |
| UND 96-47 STA | | | | |



Stanford at Notre Dame

02/06/25 Purcell Pavilion at the Joyce Center, Notre Dame
2024-25 Women's Basketball

Game Time: 8:30 PM
Game Duration: 1:41
Attendance: 7,528

Officials: Dee Kantner, Karen Preato, Cameron Inouye

Stanford - 17

| NO. | Name | F/G | Min | FG | | | Rebounds | | | Fouls | | TP | AS | TO | ST | Blocks | | +/- |
|---------------|-----------------------|-----|-------|------|-----|-----|----------|----|-----|-------|----|----|----|----|----|--------|----|-----|
| | | | | M-A | M-A | M-A | OR | DR | TOT | PF | FD | | | | | BS | BA | |
| 3 | Nunu Agara | F | 00:00 | 0-0 | 0-0 | 0-0 | 0 | 0 | 0 | 0 | 0 | 0 | 0 | 0 | 0 | 0 | 0 | 0 |
| 6 | Shay Ijiwoye | G | 03:59 | 0-0 | 0-0 | 0-0 | 0 | 0 | 0 | 1 | 1 | 0 | 0 | 0 | 0 | 0 | 0 | -1 |
| 13 | Chloe Clardy | G | 06:01 | 1-2 | 0-0 | 2-2 | 0 | 0 | 0 | 0 | 2 | 4 | 0 | 0 | 0 | 0 | 0 | -2 |
| 20 | Elena Bosgana | G | 02:15 | 0-1 | 0-1 | 0-0 | 0 | 0 | 0 | 1 | 0 | 0 | 0 | 0 | 0 | 0 | 0 | -4 |
| 21 | Brooke Demetre | G | 04:47 | 1-3 | 0-1 | 0-0 | 0 | 0 | 0 | 2 | 0 | 2 | 0 | 0 | 0 | 0 | 0 | -2 |
| 34 | Tess Heal | | 10:00 | 3-7 | 2-5 | 0-0 | 0 | 2 | 2 | 0 | 0 | 8 | 0 | 0 | 0 | 0 | 1 | -3 |
| 22 | Mary Ashley Stevenson | | 07:49 | 1-2 | 0-0 | 1-1 | 3 | 0 | 3 | 0 | 2 | 3 | 1 | 0 | 0 | 0 | 1 | -3 |
| 45 | Kennedy Umeh | | 06:27 | 0-3 | 0-0 | 0-0 | 3 | 2 | 5 | 2 | 0 | 0 | 0 | 2 | 1 | 0 | 1 | 1 |
| 40 | Courtney Ogden | | 08:42 | 0-2 | 0-0 | 0-0 | 0 | 0 | 0 | 0 | 0 | 0 | 1 | 2 | 0 | 0 | 0 | -1 |
| Team | | | | | | | 1 | 2 | 3 | | | 0 | | 1 | | | | |
| Totals | | | | 6-20 | 2-7 | 3-3 | 7 | 6 | 13 | 6 | 5 | 17 | 2 | 5 | 1 | 0 | 3 | -3 |

| Shooting By Period | | |
|---------------------|------|--------|
| 4 th FG% | 6-20 | 30.0% |
| 3PT% | 2-7 | 28.6% |
| FT% | 3-3 | 100% |
| GM FG% | 6-20 | 30.0% |
| 3PT% | 2-7 | 28.6% |
| FT% | 3-3 | 100.0% |

Dead Ball Rebounds: 0, 0

Technical Fouls::NONE

Notre Dame - 20

| NO. | Name | F/G | Min | FG | | | Rebounds | | | Fouls | | TP | AS | TO | ST | Blocks | | +/- |
|---------------|-------------------|-----|-------|------|-----|-----|----------|----|-----|-------|----|----|----|----|----|--------|----|-----|
| | | | | M-A | M-A | M-A | OR | DR | TOT | PF | FD | | | | | BS | BA | |
| 20 | Liatu King | F | 02:15 | 0-0 | 0-0 | 0-0 | 0 | 1 | 1 | 0 | 0 | 0 | 0 | 0 | 1 | 0 | 0 | 2 |
| 21 | Maddy Westbeld | F | 02:15 | 1-2 | 0-1 | 0-0 | 0 | 0 | 0 | 1 | 1 | 2 | 0 | 0 | 0 | 0 | 0 | 2 |
| 3 | Hannah Hidalgo | G | 06:41 | 0-1 | 0-0 | 2-2 | 0 | 0 | 0 | 1 | 2 | 2 | 1 | 0 | 0 | 0 | 0 | 4 |
| 5 | Olivia Miles | G | 03:33 | 1-2 | 0-1 | 2-2 | 0 | 1 | 1 | 0 | 1 | 4 | 0 | 0 | 0 | 0 | 0 | 6 |
| 11 | Sonia Citron | G | 05:23 | 0-2 | 0-1 | 0-0 | 0 | 0 | 0 | 0 | 0 | 0 | 1 | 1 | 0 | 0 | 0 | 0 |
| 8 | Cassandre Prosper | | 07:45 | 2-2 | 1-1 | 0-1 | 0 | 1 | 1 | 1 | 1 | 5 | 1 | 0 | 0 | 1 | 0 | 1 |
| 13 | Kate Koval | | 07:45 | 0-0 | 0-0 | 2-2 | 0 | 0 | 0 | 1 | 1 | 2 | 0 | 2 | 0 | 2 | 0 | 1 |
| 32 | Liza Karlen | | 05:44 | 2-2 | 1-1 | 0-0 | 0 | 2 | 2 | 0 | 0 | 5 | 0 | 0 | 0 | 0 | 0 | 2 |
| 15 | Luci Jensen | | 03:19 | 0-0 | 0-0 | 0-0 | 0 | 2 | 2 | 0 | 0 | 0 | 0 | 0 | 0 | 0 | 0 | -1 |
| 25 | Sarah Cernugel | | 03:19 | 0-0 | 0-0 | 0-0 | 0 | 0 | 0 | 0 | 0 | 0 | 0 | 1 | 0 | 0 | 0 | -1 |
| 10 | Bella Tehrani | | 02:01 | 0-0 | 0-0 | 0-0 | 0 | 0 | 0 | 1 | 0 | 0 | 0 | 0 | 0 | 0 | 0 | -1 |
| Team | | | | | | | 0 | 0 | 0 | | | 0 | | 0 | | | | |
| Totals | | | | 6-11 | 2-5 | 6-7 | 0 | 7 | 7 | 5 | 6 | 20 | 3 | 4 | 1 | 3 | 0 | 3 |

| Shooting By Period | | |
|---------------------|------|-------|
| 4 th FG% | 6-11 | 54.5% |
| 3PT% | 2-5 | 40.0% |
| FT% | 6-7 | 85.7% |
| GM FG% | 6-11 | 54.5% |
| 3PT% | 2-5 | 40.0% |
| FT% | 6-7 | 85.7% |

Dead Ball Rebounds: 0, 0

Technical Fouls::NONE

| | STA | UND |
|------------------|---------------------------|---------------------------|
| Biggest lead | 0 (1 st 10:00) | 52 (4 th 6:27) |
| Best Scoring Run | 5(4 th 5:20) | 5(4 th 2:55) |
| Lead Changes | 0 | |
| Times Tied | 0 | |
| Time with Lead | 00:00 | 09:25 |

| | STA | UND |
|---------------|-----|-----|
| Points from | | |
| Turnovers | 3 | 9 |
| Paint | 6 | 4 |
| Second Chance | 5 | 0 |
| Fast Breaks | 0 | 2 |
| Bench | 11 | 12 |

| Period by Period Scoring | | | | | |
|--------------------------|-----|-----|-----|-----|-----|
| | 1st | 2nd | 3rd | 4th | TOT |
| STA | 8 | 7 | 15 | 17 | 47 |
| UND | 17 | 33 | 26 | 20 | 96 |



Officials: Dee Kantner, Karen Preato, Cameron Inouye

Stanford - 32

| NO. | Name | F | Min | FG | | | 3P | | | FT | | | Rebounds | | | Fouls | | TP | AS | TO | ST | Blocks | | +/- |
|---------------|-----------------------|---|-------|-----|-------|------|-----|----|-----|----|----|----|----------|-----|----|-------|---|----|----|----|----|--------|-----|-----|
| | | | | M-A | M-A | M-A | OR | DR | TOT | PF | FD | OR | DR | TOT | BS | BA | | | | | | | | |
| 3 | Nunu Agara | F | 00:00 | 0-0 | 0-0 | 0-0 | 0 | 0 | 0 | 0 | 0 | 0 | 0 | 0 | 0 | 0 | 0 | 0 | 0 | 0 | 0 | 0 | 0 | |
| 6 | Shay Ijiwoye | G | 07:38 | 0-0 | 0-0 | 0-0 | 0 | 0 | 0 | 3 | 2 | 0 | 0 | 1 | 0 | 0 | 0 | 0 | 0 | 0 | 0 | 0 | -6 | |
| 13 | Chloe Clardy | G | 15:25 | 2-5 | 0-1 | 2-2 | 0 | 0 | 0 | 0 | 2 | 6 | 2 | 0 | 0 | 0 | 0 | 0 | 0 | 0 | 0 | 0 | -13 | |
| 20 | Elena Bosgana | G | 08:12 | 1-5 | 0-2 | 0-0 | 0 | 0 | 0 | 1 | 0 | 2 | 0 | 1 | 0 | 0 | 0 | 0 | 0 | 0 | 0 | 0 | -17 | |
| 21 | Brooke Demetre | G | 11:53 | 2-4 | 1-2 | 0-0 | 1 | 1 | 2 | 2 | 0 | 5 | 0 | 2 | 0 | 0 | 0 | 0 | 0 | 0 | 0 | 0 | -5 | |
| 22 | Mary Ashley Stevenson | | 10:43 | 1-3 | 0-1 | 1-1 | 3 | 0 | 3 | 0 | 2 | 3 | 1 | 0 | 0 | 0 | 0 | 0 | 0 | 0 | 1 | 0 | -11 | |
| 34 | Tess Heal | | 16:57 | 4-9 | 2-6 | 0-0 | 0 | 2 | 2 | 1 | 1 | 10 | 1 | 0 | 2 | 0 | 1 | 0 | 2 | 0 | 1 | 0 | -9 | |
| 45 | Kennedy Umeh | | 10:30 | 1-5 | 0-0 | 0-0 | 3 | 3 | 6 | 2 | 0 | 2 | 0 | 3 | 1 | 0 | 1 | 0 | 1 | 0 | 1 | 0 | 3 | |
| 40 | Courtney Ogden | | 18:42 | 2-4 | 0-0 | 0-0 | 0 | 3 | 3 | 1 | 0 | 4 | 1 | 2 | 0 | 0 | 0 | 0 | 0 | 0 | 0 | 0 | -12 | |
| Team | | | | | | | 1 | 2 | 3 | | | 0 | | | 1 | | | | | | | | | |
| Totals | | | | | 13-35 | 3-12 | 3-3 | 8 | 11 | 19 | 10 | 7 | 32 | 5 | 10 | 3 | 0 | 3 | | | | | | -14 |

| Shooting By Period | | |
|---------------------|-------|--------|
| 3 rd FG% | 7-15 | 46.7% |
| 3PT% | 1-5 | 20.0% |
| FT% | 0-0 | 0% |
| 4 th FG% | 6-20 | 30.0% |
| 3PT% | 2-7 | 28.6% |
| FT% | 3-3 | 100% |
| GM FG% | 13-35 | 37.1% |
| 3PT% | 3-12 | 25.0% |
| FT% | 3-3 | 100.0% |

Dead Ball Rebounds: 0, 0

Technical Fouls::NONE

Notre Dame - 46

| NO. | Name | F | Min | FG | | | 3P | | | FT | | | Rebounds | | | Fouls | | TP | AS | TO | ST | Blocks | | +/- |
|---------------|-------------------|---|-------|-----|-------|-----|-------|----|-----|----|----|----|----------|-----|----|-------|---|----|----|----|----|--------|----|-----|
| | | | | M-A | M-A | M-A | OR | DR | TOT | PF | FD | OR | DR | TOT | BS | BA | | | | | | | | |
| 20 | Liatu King | F | 08:28 | 2-3 | 0-0 | 0-1 | 1 | 1 | 2 | 0 | 1 | 4 | 0 | 1 | 2 | 0 | 0 | 1 | 2 | 0 | 0 | 0 | 15 | |
| 21 | Maddy Westbeld | F | 09:30 | 1-3 | 0-1 | 0-0 | 0 | 1 | 1 | 1 | 1 | 2 | 0 | 0 | 0 | 0 | 0 | 0 | 0 | 0 | 0 | 0 | 5 | |
| 3 | Hannah Hidalgo | G | 13:05 | 4-5 | 1-1 | 4-4 | 1 | 1 | 2 | 2 | 4 | 13 | 1 | 1 | 1 | 0 | 0 | 1 | 1 | 0 | 0 | 0 | 17 | |
| 5 | Olivia Miles | G | 13:06 | 3-8 | 1-3 | 2-2 | 0 | 2 | 2 | 0 | 1 | 9 | 1 | 1 | 0 | 0 | 0 | 0 | 0 | 0 | 0 | 0 | 17 | |
| 11 | Sonia Citron | G | 13:05 | 1-4 | 0-2 | 0-0 | 0 | 2 | 2 | 0 | 0 | 2 | 3 | 2 | 1 | 0 | 0 | 0 | 0 | 0 | 0 | 0 | 3 | |
| 8 | Cassandre Prosper | | 14:06 | 2-2 | 1-1 | 2-3 | 1 | 2 | 3 | 1 | 2 | 7 | 1 | 0 | 0 | 0 | 1 | 0 | 0 | 1 | 0 | 0 | 7 | |
| 32 | Liza Karlen | | 08:29 | 2-2 | 1-1 | 0-0 | 1 | 2 | 3 | 0 | 0 | 5 | 1 | 0 | 0 | 0 | 0 | 0 | 0 | 0 | 0 | 0 | 10 | |
| 13 | Kate Koval | | 11:32 | 1-2 | 0-0 | 2-2 | 0 | 1 | 1 | 2 | 1 | 4 | 0 | 2 | 0 | 2 | 0 | 2 | 0 | 2 | 0 | 0 | -1 | |
| 15 | Luci Jensen | | 03:19 | 0-0 | 0-0 | 0-0 | 0 | 2 | 2 | 0 | 0 | 0 | 0 | 0 | 0 | 0 | 0 | 0 | 0 | 0 | 0 | 0 | -1 | |
| 25 | Sarah Cernugel | | 03:19 | 0-0 | 0-0 | 0-0 | 0 | 0 | 0 | 0 | 0 | 0 | 0 | 0 | 1 | 0 | 0 | 0 | 0 | 0 | 0 | 0 | -1 | |
| 10 | Bella Tehrani | | 02:01 | 0-0 | 0-0 | 0-0 | 0 | 0 | 0 | 1 | 0 | 0 | 0 | 0 | 0 | 0 | 0 | 0 | 0 | 0 | 0 | 0 | -1 | |
| Team | | | | | | | 0 | 0 | 0 | | | 0 | | | 0 | | | | | | | | | |
| Totals | | | | | 16-29 | 4-9 | 10-12 | 4 | 14 | 18 | 7 | 10 | 46 | 7 | 8 | 4 | 3 | 0 | 14 | | | | | |

| Shooting By Period | | |
|---------------------|-------|-------|
| 3 rd FG% | 10-18 | 55.6% |
| 3PT% | 2-4 | 50.0% |
| FT% | 4-5 | 80% |
| 4 th FG% | 6-11 | 54.5% |
| 3PT% | 2-5 | 40.0% |
| FT% | 6-7 | 85.7% |
| GM FG% | 16-29 | 55.2% |
| 3PT% | 4-9 | 44.4% |
| FT% | 10-12 | 83.3% |

Dead Ball Rebounds: 0, 0

Technical Fouls::NONE

| | STA | UND |
|------------------|---------------------------|---------------------------|
| Biggest lead | 0 (1 st 10:00) | 52 (4 th 6:27) |
| Best Scoring Run | 5(4 th 5:20) | 7(3 rd 5:27) |
| Lead Changes | 0 | |
| Times Tied | 0 | |
| Time with Lead | 00:00 | 19:31 |

| | STA | UND |
|---------------|-----|-----|
| Points from | | |
| Turnovers | 7 | 17 |
| Paint | 14 | 18 |
| Second Chance | 5 | 5 |
| Fast Breaks | 2 | 9 |
| Bench | 19 | 16 |

| Period by Period Scoring | | | | | |
|--------------------------|-----|-----|-----|-----|-----|
| | 1st | 2nd | 3rd | 4th | TOT |
| STA | 8 | 7 | 15 | 17 | 47 |
| UND | 17 | 33 | 26 | 20 | 96 |



Stanford at Notre Dame

02/06/25 Purcell Pavilion at the Joyce Center, Notre Dame
2024-25 Women's Basketball

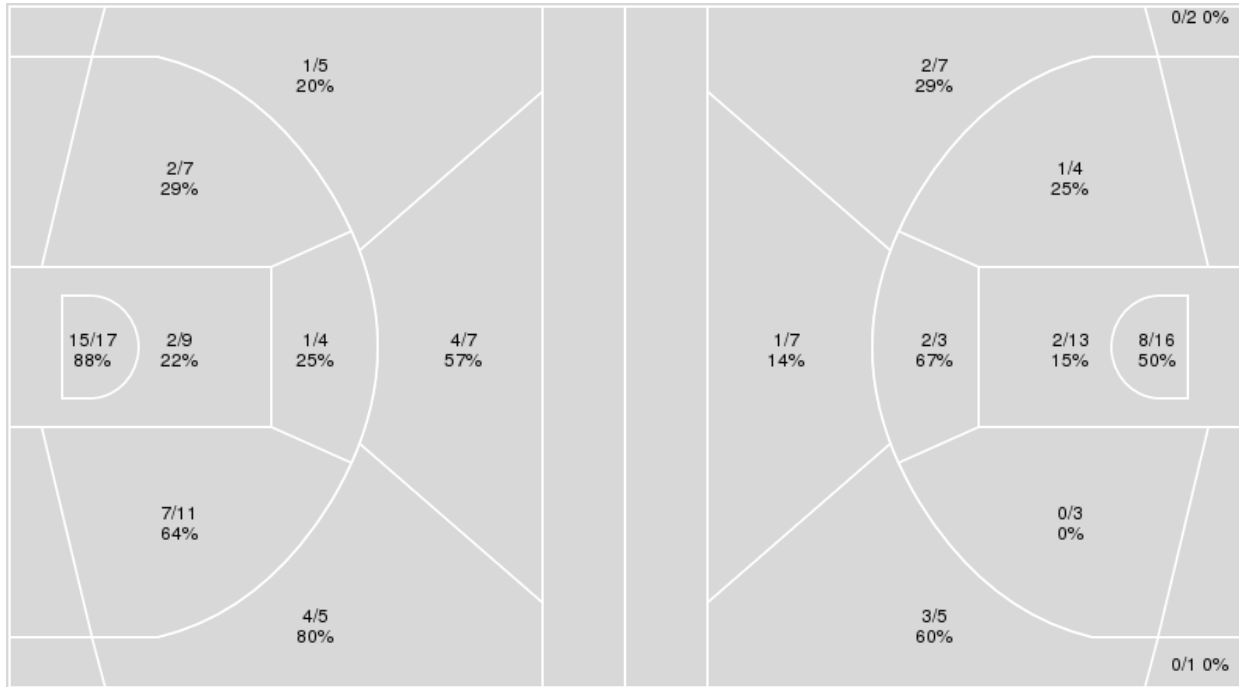
Officials: Dee Kantner, Karen Preato, Cameron Inouye

{ Players => 2, 3, 5, 8, 10, 11, 13, 14, 15, 20, 21, 22, 25, 32; } FG
Types => All; Results => All;

{ Players => 3, 6, 10, 13, 15, 20, 21, 22, 24, 31, 32, 34, 40, 45; } FG
Types => All; Results => All;

Notre Dame

Stanford



| Notre Dame | M/A | % |
|-------------|-------|----|
| Field Goals | 36/65 | 55 |
| 2 Points | 27/48 | 56 |
| 3 Points | 9/17 | 53 |
| Free Throws | 15/17 | 88 |

| Stanford | M/A | % |
|-------------|-------|-----|
| Field Goals | 19/61 | 31 |
| 2 Points | 13/39 | 33 |
| 3 Points | 6/22 | 27 |
| Free Throws | 3/3 | 100 |



Stanford at Notre Dame

02/06/25 Purcell Pavilion at the Joyce Center, Notre Dame
2024-25 Women's Basketball

Game Time: 8:30 PM
Game Duration: 1:41
Attendance: 7,528

Officials: Dee Kantner, Karen Preato, Cameron Inouye

Stanford

| No | Name | Mins | | Score | | Points Diff | | Points per Min | | Assists | | Rebounds | | Steals | | Turnovers | |
|----|-----------------------|-------|-------|---------|---------|-------------|-----|----------------|------|---------|-----|----------|-----|--------|-----|-----------|-----|
| | | On | Off | On | Off | On | Off | On | Off | On | Off | On | Off | On | Off | On | Off |
| 3 | Nunu Agara | 04:59 | 35:01 | 6 - 7 | 41 - 89 | -1 | -48 | 1.20 | 1.17 | 2 | 6 | 6 | 32 | 0 | 6 | 4 | 25 |
| 6 | Shay Ijiwoye | 22:04 | 17:56 | 27 - 59 | 20 - 37 | -32 | -17 | 1.22 | 1.12 | 6 | 2 | 19 | 19 | 2 | 4 | 20 | 9 |
| 13 | Chloe Clardy | 26:13 | 13:47 | 28 - 60 | 19 - 36 | -32 | -17 | 1.07 | 1.38 | 4 | 4 | 25 | 13 | 5 | 1 | 18 | 11 |
| 20 | Elena Bosgana | 21:49 | 18:11 | 23 - 64 | 24 - 32 | -41 | -8 | 1.05 | 1.32 | 5 | 3 | 15 | 23 | 1 | 5 | 17 | 12 |
| 21 | Brooke Demetre | 26:27 | 13:33 | 27 - 61 | 20 - 35 | -34 | -15 | 1.02 | 1.48 | 4 | 4 | 25 | 13 | 5 | 1 | 22 | 7 |
| 22 | Mary Ashley Stevenson | 21:34 | 18:26 | 26 - 61 | 21 - 35 | -35 | -14 | 1.21 | 1.14 | 5 | 3 | 19 | 19 | 4 | 2 | 14 | 15 |
| 34 | Tess Heal | 26:48 | 13:12 | 32 - 60 | 15 - 36 | -28 | -21 | 1.19 | 1.14 | 5 | 3 | 27 | 11 | 6 | 0 | 17 | 12 |
| 40 | Courtney Ogden | 32:59 | 07:01 | 40 - 77 | 7 - 19 | -37 | -12 | 1.21 | 1.00 | 7 | 1 | 34 | 4 | 4 | 2 | 22 | 7 |
| 45 | Kennedy Umeh | 17:07 | 22:53 | 26 - 31 | 21 - 65 | -5 | -44 | 1.52 | 0.92 | 2 | 6 | 20 | 18 | 3 | 3 | 11 | 18 |

Notre Dame

| No | Name | Mins | | Score | | Points Diff | | Points per Min | | Assists | | Rebounds | | Steals | | Turnovers | |
|----|-------------------|-------|-------|---------|---------|-------------|-----|----------------|------|---------|-----|----------|-----|--------|-----|-----------|-----|
| | | On | Off | On | Off | On | Off | On | Off | On | Off | On | Off | On | Off | On | Off |
| 3 | Hannah Hidalgo | 30:06 | 09:54 | 77 - 33 | 19 - 14 | 44 | 5 | 2.56 | 1.92 | 16 | 2 | 26 | 9 | 14 | 2 | 8 | 4 |
| 5 | Olivia Miles | 26:20 | 13:40 | 67 - 27 | 29 - 20 | 40 | 9 | 2.54 | 2.12 | 12 | 6 | 25 | 10 | 14 | 2 | 6 | 6 |
| 8 | Cassandra Prosper | 26:05 | 13:55 | 65 - 30 | 31 - 17 | 35 | 14 | 2.49 | 2.23 | 11 | 7 | 22 | 13 | 9 | 7 | 9 | 3 |
| 10 | Bella Tehrani | 02:01 | 37:59 | 5 - 6 | 91 - 41 | -1 | 50 | 2.48 | 2.40 | 0 | 18 | 0 | 35 | 0 | 16 | 0 | 12 |
| 11 | Sonia Citron | 30:51 | 09:09 | 65 - 35 | 31 - 12 | 30 | 19 | 2.11 | 3.39 | 15 | 3 | 28 | 7 | 11 | 5 | 9 | 3 |
| 13 | Kate Koval | 17:16 | 22:44 | 38 - 23 | 58 - 24 | 15 | 34 | 2.20 | 2.55 | 5 | 13 | 14 | 21 | 5 | 11 | 8 | 4 |
| 15 | Luci Jensen | 03:19 | 36:41 | 7 - 8 | 89 - 39 | -1 | 50 | 2.11 | 2.43 | 0 | 18 | 2 | 33 | 0 | 16 | 2 | 10 |
| 20 | Liatu King | 21:39 | 18:21 | 54 - 24 | 42 - 23 | 30 | 19 | 2.49 | 2.29 | 12 | 6 | 21 | 14 | 9 | 7 | 3 | 9 |
| 21 | Maddy Westbeld | 21:29 | 18:31 | 47 - 26 | 49 - 21 | 21 | 28 | 2.19 | 2.65 | 12 | 6 | 20 | 15 | 9 | 7 | 6 | 6 |
| 25 | Sarah Cernugel | 03:19 | 36:41 | 7 - 8 | 89 - 39 | -1 | 50 | 2.11 | 2.43 | 0 | 18 | 2 | 33 | 0 | 16 | 2 | 10 |
| 32 | Liza Karlen | 17:35 | 22:25 | 48 - 15 | 48 - 32 | 33 | 16 | 2.73 | 2.14 | 7 | 11 | 15 | 20 | 9 | 7 | 7 | 5 |

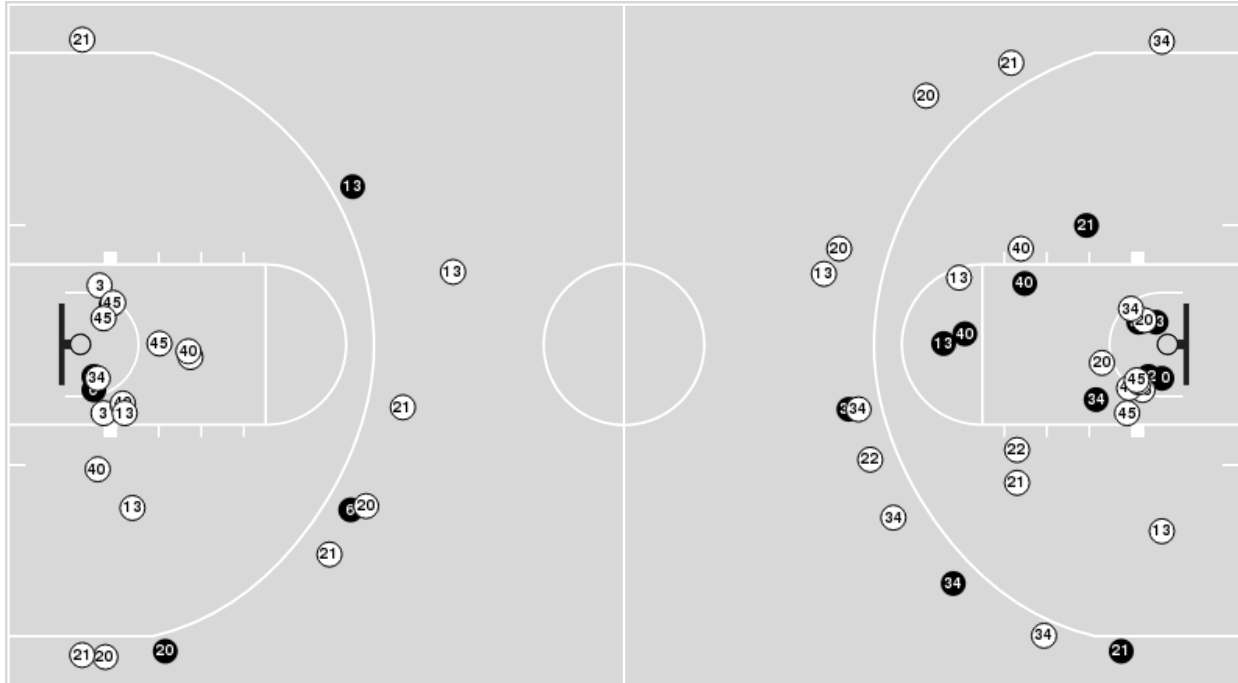


Officials: Dee Kantner, Karen Preato, Cameron Inouye

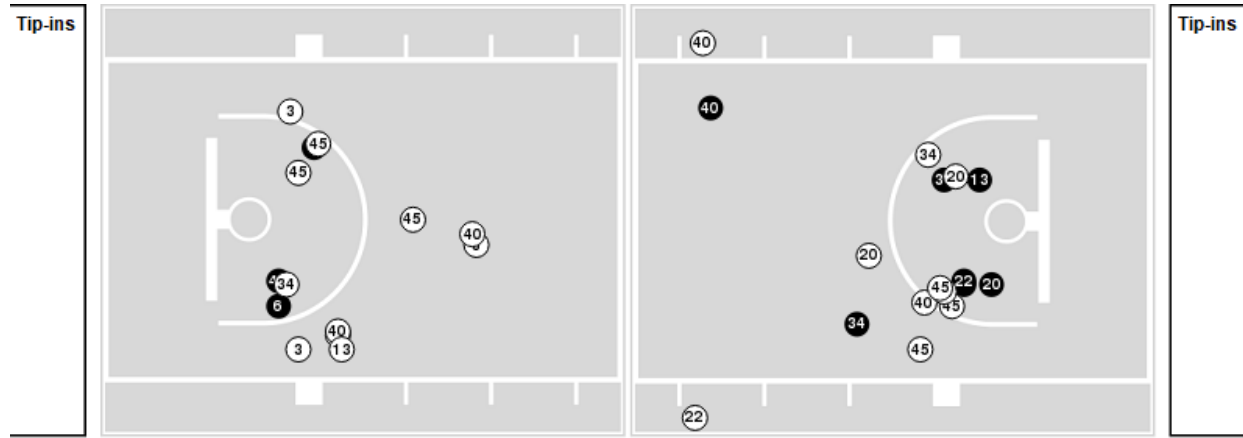
Players => 3, 6, 10, 13, 15, 20, 21, 22, 24, 31, 32, 34, 40, 45 FG Types=>All Results=>All

Stanford

All Field Goals



Blow Up Chart



● Made ○ Missed N - Player Number

| Stanford | M/A | % |
|-------------|-------|-----|
| Field Goals | 19/61 | 31 |
| 2 Points | 13/39 | 33 |
| 3 Points | 6/22 | 27 |
| Free Throws | 3/3 | 100 |

| Stanford | M/A | % |
|----------------------|--------------|-----|
| Points in the Paint | 20 (10 / 29) | 34 |
| Fast Break Points | 2 (1/1) | 100 |
| Second Chance Points | 5 (3/9) | 33 |
| Effective FG% | 36 | |

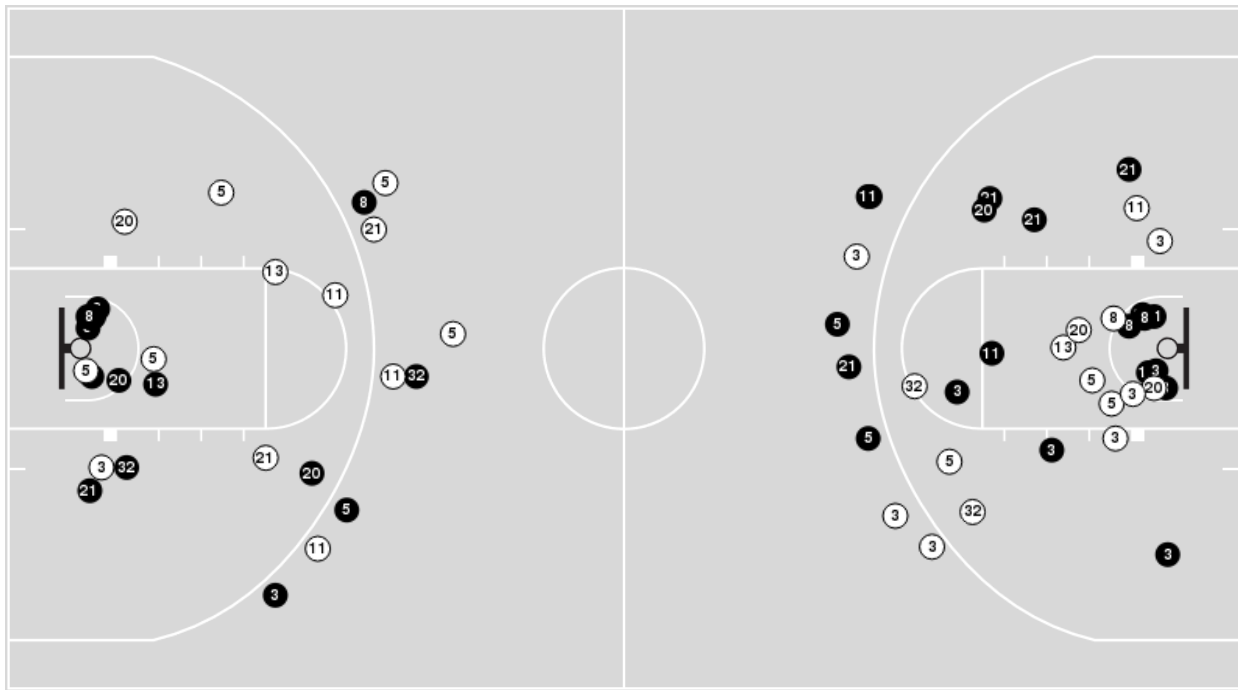


Officials: Dee Kantner, Karen Preato, Cameron Inouye

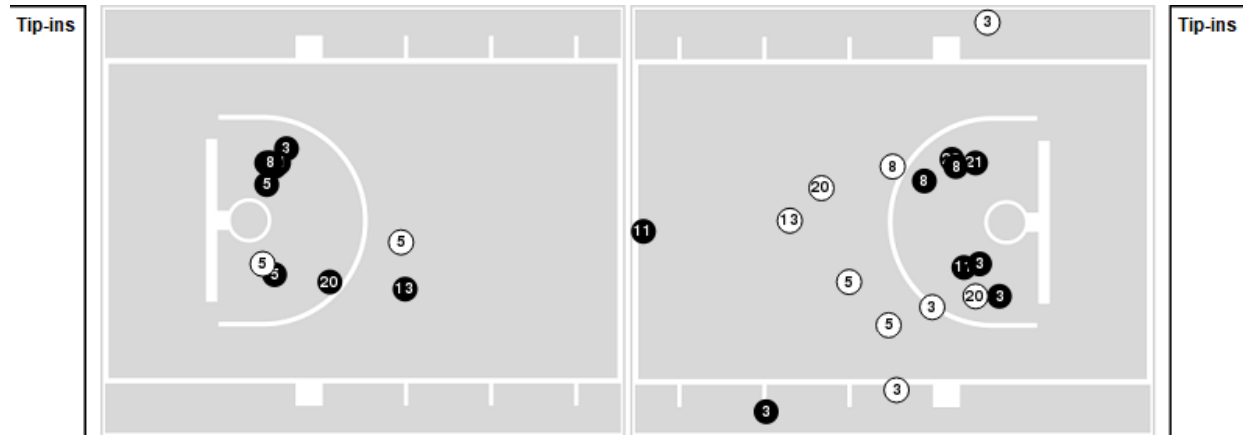
Players => 2, 3, 5, 8, 10, 11, 13, 14, 15, 20, 21, 22, 25, 32FG Types=>AllResults=>All

Notre Dame

All Field Goals



Blow Up Chart



● Made ○ Missed N - Player Number

| Notre Dame | M/A | % |
|-------------|-------|----|
| Field Goals | 36/65 | 55 |
| 2 Points | 27/48 | 56 |
| 3 Points | 9/17 | 53 |
| Free Throws | 15/17 | 88 |

| Notre Dame | M/A | % |
|----------------------|--------------|-----|
| Points in the Paint | 34 (17 / 26) | 65 |
| Fast Break Points | 22 (13/13) | 100 |
| Second Chance Points | 12 (6/8) | 75 |
| Effective FG% | 62 | |



Officials: Dee Kantner, Karen Preato, Cameron Inouye

Stanford

| Lineup | Quarter On | Time On | Quarter Off | Time Off | Time on Court | Score | Score Diff | Reb | Stl | Tov | Ass | PPP |
|---|------------|---------|-------------|----------|---------------|-------|------------|-----|-----|-----|-----|--------|
| 3- Agara N/ 6- Ijiwoye S/ 13- Clardy C/ 20- Bosgana E/ 21- Demetre B/ | 1 | 10:00 | 1 | 06:48 | 03:12 | 3-7 | -4 | 3 | 0 | 4 | 1 | 0.5000 |
| 3- Agara N/ 6- Ijiwoye S/ 13- Clardy C/ 21- Demetre B/ 40- Ogden C/ | 1 | 06:48 | 1 | 06:09 | 00:39 | 0-0 | 0 | 1 | 0 | 0 | 0 | 0.0000 |
| 3- Agara N/ 13- Clardy C/ 21- Demetre B/ 34- Heal T/ 40- Ogden C/ | 1 | 06:09 | 1 | 05:01 | 01:08 | 3-0 | 3 | 2 | 0 | 0 | 1 | 1.0000 |
| 13- Clardy C/ 21- Demetre B/ 22- Stevenson M/ 34- Heal T/ 40- Ogden C/ | 1 | 05:01 | 1 | 03:34 | 01:27 | 0-4 | -4 | 2 | 1 | 2 | 0 | 0.0000 |
| 6- Ijiwoye S/ 21- Demetre B/ 34- Heal T/ 40- Ogden C/ 45- Umeh K/ | 1 | 03:34 | 1 | 03:19 | 00:15 | 0-0 | 0 | 1 | 0 | 1 | 0 | 0.0000 |
| 6- Ijiwoye S/ 22- Stevenson M/ 34- Heal T/ 40- Ogden C/ 45- Umeh K/ | 1 | 03:19 | 1 | 02:57 | 00:22 | 0-0 | 0 | 1 | 0 | 0 | 0 | 0.0000 |
| 6- Ijiwoye S/ 20- Bosgana E/ 22- Stevenson M/ 40- Ogden C/ 45- Umeh K/ | 1 | 02:57 | 1 | 01:10 | 01:47 | 2-4 | -2 | 2 | 0 | 2 | 0 | 0.6667 |
| 6- Ijiwoye S/ 20- Bosgana E/ 21- Demetre B/ 40- Ogden C/ 45- Umeh K/ | 1 | 01:10 | 1 | 00:31 | 00:39 | 0-2 | -2 | 1 | 0 | 1 | 0 | 0.0000 |
| 6- Ijiwoye S/ 20- Bosgana E/ 22- Stevenson M/ 40- Ogden C/ 45- Umeh K/ | 1 | 00:31 | 2 | 07:14 | 03:17 | 5-9 | -4 | 2 | 0 | 1 | 1 | 1.0000 |
| 13- Clardy C/ 20- Bosgana E/ 21- Demetre B/ 34- Heal T/ 40- Ogden C/ | 2 | 07:14 | 2 | 04:15 | 02:59 | 0-8 | -8 | 3 | 0 | 2 | 0 | 0.0000 |
| 6- Ijiwoye S/ 20- Bosgana E/ 21- Demetre B/ 40- Ogden C/ 45- Umeh K/ | 2 | 04:15 | 2 | 03:58 | 00:17 | 0-0 | 0 | 0 | 0 | 1 | 0 | 0.0000 |
| 6- Ijiwoye S/ 20- Bosgana E/ 21- Demetre B/ 22- Stevenson M/ 40- Ogden C/ | 2 | 03:58 | 2 | 03:40 | 00:18 | 0-4 | -4 | 0 | 0 | 0 | 0 | 0.0000 |
| 6- Ijiwoye S/ 13- Clardy C/ 21- Demetre B/ 22- Stevenson M/ 34- Heal T/ | 2 | 03:40 | 2 | 02:17 | 01:23 | 0-6 | -6 | 0 | 1 | 2 | 0 | 0.0000 |
| 6- Ijiwoye S/ 20- Bosgana E/ 21- Demetre B/ 22- Stevenson M/ 34- Heal T/ | 2 | 02:17 | 2 | 01:09 | 01:08 | 2-2 | 0 | 0 | 1 | 1 | 0 | 0.6667 |
| 6- Ijiwoye S/ 21- Demetre B/ 22- Stevenson M/ 34- Heal T/ 40- Ogden C/ | 2 | 01:09 | 3 | 10:00 | 01:09 | 0-4 | -4 | 1 | 0 | 2 | 0 | 0.0000 |
| 6- Ijiwoye S/ 13- Clardy C/ 20- Bosgana E/ 21- Demetre B/ 40- Ogden C/ | 3 | 10:00 | 3 | 06:57 | 03:03 | 5-10 | -5 | 2 | 0 | 3 | 1 | 0.8333 |
| 6- Ijiwoye S/ 13- Clardy C/ 20- Bosgana E/ 22- Stevenson M/ 40- Ogden C/ | 3 | 06:57 | 3 | 06:57 | 00:00 | 0-0 | 0 | 0 | 0 | 0 | 0 | 0.0000 |
| 6- Ijiwoye S/ 20- Bosgana E/ 22- Stevenson M/ 34- Heal T/ 40- Ogden C/ | 3 | 06:57 | 3 | 06:21 | 00:36 | 2-2 | 0 | 0 | 0 | 0 | 1 | 2.0000 |
| 13- Clardy C/ 20- Bosgana E/ 22- Stevenson M/ 34- Heal T/ 40- Ogden C/ | 3 | 06:21 | 3 | 04:03 | 02:18 | 2-10 | -8 | 1 | 0 | 1 | 1 | 0.4000 |
| 13- Clardy C/ 21- Demetre B/ 34- Heal T/ 40- Ogden C/ 45- Umeh K/ | 3 | 04:03 | 4 | 10:00 | 04:03 | 6-4 | 2 | 3 | 2 | 1 | 0 | 0.8571 |
| 6- Ijiwoye S/ 20- Bosgana E/ 22- Stevenson M/ 34- Heal T/ 40- Ogden C/ | 4 | 10:00 | 4 | 09:20 | 00:40 | 0-2 | -2 | 0 | 0 | 1 | 0 | 0.0000 |
| 13- Clardy C/ 20- Bosgana E/ 22- Stevenson M/ 34- Heal T/ 40- Ogden C/ | 4 | 09:20 | 4 | 09:03 | 00:17 | 0-0 | 0 | 0 | 0 | 0 | 0 | 0.0000 |
| 13- Clardy C/ 21- Demetre B/ 34- Heal T/ 40- Ogden C/ 45- Umeh K/ | 4 | 09:03 | 4 | 07:45 | 01:18 | 2-2 | 0 | 2 | 0 | 2 | 0 | 0.5000 |
| 13- Clardy C/ 20- Bosgana E/ 21- Demetre B/ 22- Stevenson M/ 34- Heal T/ | 4 | 07:45 | 4 | 06:27 | 01:18 | 2-4 | -2 | 1 | 0 | 0 | 0 | 1.0000 |
| 13- Clardy C/ 21- Demetre B/ 34- Heal T/ 40- Ogden C/ 45- Umeh K/ | 4 | 06:27 | 4 | 05:34 | 00:53 | 2-2 | 0 | 1 | 0 | 0 | 0 | 1.0638 |
| 13- Clardy C/ 22- Stevenson M/ 34- Heal T/ 40- Ogden C/ 45- Umeh K/ | 4 | 05:34 | 4 | 03:19 | 02:15 | 3-3 | 0 | 4 | 1 | 1 | 0 | 0.7500 |
| 6- Ijiwoye S/ 21- Demetre B/ 22- Stevenson M/ 34- Heal T/ 40- Ogden C/ | 4 | 03:19 | 4 | 02:01 | 01:18 | 2-2 | 0 | 2 | 0 | 0 | 1 | 0.6667 |
| 6- Ijiwoye S/ 22- Stevenson M/ 34- Heal T/ 40- Ogden C/ 45- Umeh K/ | 4 | 02:01 | 4 | 00:00 | 02:01 | 6-5 | 1 | 3 | 0 | 1 | 1 | 1.7442 |



Officials: Dee Kantner, Karen Preato, Cameron Inouye

Notre Dame

| Lineup | Quarter On | Time On | Quarter Off | Time Off | Time on Court | Score | Score Diff | Reb | Stl | Tov | Ass | PPP |
|---|------------|---------|-------------|----------|---------------|-------|------------|-----|-----|-----|-----|--------|
| 3- Hidalgo H/ 5- Miles O/ 11- Citron S/ 20- King L/ 21- Westbeld M/ | 1 | 10:00 | 1 | 05:01 | 04:59 | 7-6 | 1 | 6 | 3 | 1 | 2 | 0.7778 |
| 3- Hidalgo H/ 5- Miles O/ 8- Prosper C/ 21- Westbeld M/ 32- Karlen L/ | 1 | 05:01 | 1 | 03:56 | 01:05 | 4-0 | 4 | 0 | 2 | 1 | 1 | 1.3889 |
| 3- Hidalgo H/ 8- Prosper C/ 11- Citron S/ 13- Koval K/ 32- Karlen L/ | 1 | 03:56 | 1 | 02:27 | 01:29 | 2-0 | 2 | 1 | 0 | 0 | 1 | 0.6667 |
| 3- Hidalgo H/ 5- Miles O/ 11- Citron S/ 20- King L/ 32- Karlen L/ | 1 | 02:27 | 1 | 01:10 | 01:17 | 2-2 | 0 | 1 | 0 | 0 | 1 | 1.0000 |
| 3- Hidalgo H/ 5- Miles O/ 11- Citron S/ 20- King L/ 21- Westbeld M/ | 1 | 01:10 | 2 | 10:00 | 01:10 | 2-0 | 2 | 1 | 0 | 0 | 1 | 1.0000 |
| 3- Hidalgo H/ 8- Prosper C/ 11- Citron S/ 20- King L/ 21- Westbeld M/ | 2 | 10:00 | 2 | 07:14 | 02:46 | 9-5 | 4 | 2 | 0 | 0 | 3 | 1.8000 |
| 5- Miles O/ 8- Prosper C/ 11- Citron S/ 20- King L/ 21- Westbeld M/ | 2 | 07:14 | 2 | 05:15 | 01:59 | 5-0 | 5 | 3 | 1 | 0 | 1 | 1.6667 |
| 5- Miles O/ 8- Prosper C/ 11- Citron S/ 20- King L/ 32- Karlen L/ | 2 | 05:15 | 2 | 04:15 | 01:00 | 3-0 | 3 | 0 | 1 | 0 | 0 | 1.5000 |
| 3- Hidalgo H/ 5- Miles O/ 11- Citron S/ 13- Koval K/ 32- Karlen L/ | 2 | 04:15 | 2 | 03:40 | 00:35 | 4-0 | 4 | 1 | 1 | 0 | 0 | 2.0000 |
| 3- Hidalgo H/ 8- Prosper C/ 11- Citron S/ 13- Koval K/ 32- Karlen L/ | 2 | 03:40 | 2 | 01:09 | 02:31 | 8-2 | 6 | 2 | 2 | 2 | 1 | 1.4706 |
| 3- Hidalgo H/ 5- Miles O/ 8- Prosper C/ 13- Koval K/ 32- Karlen L/ | 2 | 01:09 | 3 | 10:00 | 01:09 | 4-0 | 4 | 0 | 2 | 0 | 0 | 1.3889 |
| 3- Hidalgo H/ 5- Miles O/ 11- Citron S/ 20- King L/ 21- Westbeld M/ | 3 | 10:00 | 3 | 06:21 | 03:39 | 12-7 | 5 | 3 | 2 | 2 | 2 | 1.4218 |
| 3- Hidalgo H/ 5- Miles O/ 8- Prosper C/ 20- King L/ 32- Karlen L/ | 3 | 06:21 | 3 | 04:03 | 02:18 | 10-2 | 8 | 4 | 1 | 0 | 1 | 1.8797 |
| 3- Hidalgo H/ 8- Prosper C/ 11- Citron S/ 20- King L/ 32- Karlen L/ | 3 | 04:03 | 3 | 03:47 | 00:16 | 0-0 | 0 | 0 | 0 | 0 | 0 | 0.0000 |
| 3- Hidalgo H/ 8- Prosper C/ 11- Citron S/ 13- Koval K/ 32- Karlen L/ | 3 | 03:47 | 3 | 03:36 | 00:11 | 0-0 | 0 | 0 | 0 | 0 | 0 | 0.0000 |
| 5- Miles O/ 8- Prosper C/ 11- Citron S/ 13- Koval K/ 21- Westbeld M/ | 3 | 03:36 | 4 | 10:00 | 03:36 | 4-6 | -2 | 4 | 0 | 2 | 1 | 0.6667 |
| 3- Hidalgo H/ 5- Miles O/ 11- Citron S/ 20- King L/ 21- Westbeld M/ | 4 | 10:00 | 4 | 07:45 | 02:15 | 4-2 | 2 | 1 | 1 | 0 | 1 | 1.0000 |
| 3- Hidalgo H/ 5- Miles O/ 8- Prosper C/ 13- Koval K/ 32- Karlen L/ | 4 | 07:45 | 4 | 06:27 | 01:18 | 6-2 | 4 | 1 | 0 | 0 | 1 | 2.1739 |
| 3- Hidalgo H/ 8- Prosper C/ 11- Citron S/ 13- Koval K/ 32- Karlen L/ | 4 | 06:27 | 4 | 03:19 | 03:08 | 3-5 | -2 | 3 | 0 | 2 | 1 | 0.5000 |
| 8- Prosper C/ 13- Koval K/ 15- Jensen L/ 25- Cernugel S/ 32- Karlen L/ | 4 | 03:19 | 4 | 02:01 | 01:18 | 2-2 | 0 | 2 | 0 | 2 | 0 | 0.5814 |
| 8- Prosper C/ 10- Tehrani B/ 13- Koval K/ 15- Jensen L/ 25- Cernugel S/ | 4 | 02:01 | 4 | 00:00 | 02:01 | 5-6 | -1 | 0 | 0 | 0 | 0 | 2.6596 |



Officials: Dee Kantner, Karen Preato, Cameron Inouye

Stanford

| Lineup | Time | Score | Score Diff | Pts/Min | Reb | Stl | Tov | Ass | PPP |
|---|-------|-------|------------|---------|-----|-----|-----|-----|--------|
| 13- Clardy C/ 21- Demetre B/ 34- Heal T/ 40- Ogden C/ 45- Umeh K/ | 06:14 | 10-8 | 2 | 1.6043 | 6 | 2 | 3 | 0 | 0.7764 |
| 6- Ijiwoye S/ 20- Bosgana E/ 22- Stevenson M/ 40- Ogden C/ 45- Umeh K/ | 05:04 | 7-13 | -6 | 1.3816 | 4 | 0 | 3 | 1 | 0.8750 |
| 3- Agara N/ 6- Ijiwoye S/ 13- Clardy C/ 20- Bosgana E/ 21- Demetre B/ | 03:12 | 3-7 | -4 | 0.9375 | 3 | 0 | 4 | 1 | 0.5000 |
| 6- Ijiwoye S/ 13- Clardy C/ 20- Bosgana E/ 21- Demetre B/ 40- Ogden C/ | 03:03 | 5-10 | -5 | 1.6393 | 2 | 0 | 3 | 1 | 0.8333 |
| 13- Clardy C/ 20- Bosgana E/ 21- Demetre B/ 34- Heal T/ 40- Ogden C/ | 02:59 | 0-8 | -8 | 0.0000 | 3 | 0 | 2 | 0 | 0.0000 |
| 13- Clardy C/ 20- Bosgana E/ 22- Stevenson M/ 34- Heal T/ 40- Ogden C/ | 02:35 | 2-10 | -8 | 0.7742 | 1 | 0 | 1 | 1 | 0.4000 |
| 6- Ijiwoye S/ 21- Demetre B/ 22- Stevenson M/ 34- Heal T/ 40- Ogden C/ | 02:27 | 2-6 | -4 | 0.8163 | 3 | 0 | 2 | 1 | 0.4000 |
| 6- Ijiwoye S/ 22- Stevenson M/ 34- Heal T/ 40- Ogden C/ 45- Umeh K/ | 02:23 | 6-5 | 1 | 2.5175 | 4 | 0 | 1 | 1 | 1.7442 |
| 13- Clardy C/ 22- Stevenson M/ 34- Heal T/ 40- Ogden C/ 45- Umeh K/ | 02:15 | 3-3 | 0 | 1.3333 | 4 | 1 | 1 | 0 | 0.7500 |
| 13- Clardy C/ 21- Demetre B/ 22- Stevenson M/ 34- Heal T/ 40- Ogden C/ | 01:27 | 0-4 | -4 | 0.0000 | 2 | 1 | 2 | 0 | 0.0000 |
| 6- Ijiwoye S/ 13- Clardy C/ 21- Demetre B/ 22- Stevenson M/ 34- Heal T/ | 01:23 | 0-6 | -6 | 0.0000 | 0 | 1 | 2 | 0 | 0.0000 |
| 13- Clardy C/ 20- Bosgana E/ 21- Demetre B/ 22- Stevenson M/ 34- Heal T/ | 01:18 | 2-4 | -2 | 1.5385 | 1 | 0 | 0 | 0 | 1.0000 |
| 6- Ijiwoye S/ 20- Bosgana E/ 22- Stevenson M/ 34- Heal T/ 40- Ogden C/ | 01:16 | 2-4 | -2 | 1.5789 | 0 | 0 | 1 | 1 | 1.0000 |
| 3- Agara N/ 13- Clardy C/ 21- Demetre B/ 34- Heal T/ 40- Ogden C/ | 01:08 | 3-0 | 3 | 2.6471 | 2 | 0 | 0 | 1 | 1.0000 |
| 6- Ijiwoye S/ 20- Bosgana E/ 21- Demetre B/ 22- Stevenson M/ 34- Heal T/ | 01:08 | 2-2 | 0 | 1.7647 | 0 | 1 | 1 | 0 | 0.6667 |
| 6- Ijiwoye S/ 20- Bosgana E/ 21- Demetre B/ 40- Ogden C/ 45- Umeh K/ | 00:56 | 0-2 | -2 | 0.0000 | 1 | 0 | 2 | 0 | 0.0000 |
| 3- Agara N/ 6- Ijiwoye S/ 13- Clardy C/ 21- Demetre B/ 40- Ogden C/ | 00:39 | 0-0 | 0 | 0.0000 | 1 | 0 | 0 | 0 | 0.0000 |
| 6- Ijiwoye S/ 20- Bosgana E/ 21- Demetre B/ 22- Stevenson M/ 40- Ogden C/ | 00:18 | 0-4 | -4 | 0.0000 | 0 | 0 | 0 | 0 | 0.0000 |
| 6- Ijiwoye S/ 21- Demetre B/ 34- Heal T/ 40- Ogden C/ 45- Umeh K/ | 00:15 | 0-0 | 0 | 0.0000 | 1 | 0 | 1 | 0 | 0.0000 |
| 6- Ijiwoye S/ 13- Clardy C/ 20- Bosgana E/ 22- Stevenson M/ 40- Ogden C/ | 00:00 | 0-0 | 0 | NaN | 0 | 0 | 0 | 0 | 0.0000 |



Officials: Dee Kantner, Karen Preato, Cameron Inouye

Notre Dame

| Lineup | Time | Score | Score Diff | Pts/Min | Reb | Stl | Tov | Ass | PPP |
|---|-------|-------|------------|---------|-----|-----|-----|-----|--------|
| 3- Hidalgo H/ 5- Miles O/ 11- Citron S/ 20- King L/ 21- Westbeld M/ | 12:03 | 25-15 | 10 | 2.0747 | 11 | 6 | 3 | 6 | 1.0666 |
| 3- Hidalgo H/ 8- Prosper C/ 11- Citron S/ 13- Koval K/ 32- Karlen L/ | 07:19 | 13-7 | 6 | 1.7768 | 6 | 2 | 4 | 3 | 0.9003 |
| 5- Miles O/ 8- Prosper C/ 11- Citron S/ 13- Koval K/ 21- Westbeld M/ | 03:36 | 4-6 | -2 | 1.1111 | 4 | 0 | 2 | 1 | 0.6667 |
| 3- Hidalgo H/ 8- Prosper C/ 11- Citron S/ 20- King L/ 21- Westbeld M/ | 02:46 | 9-5 | 4 | 3.2530 | 2 | 0 | 0 | 3 | 1.8000 |
| 3- Hidalgo H/ 5- Miles O/ 8- Prosper C/ 13- Koval K/ 32- Karlen L/ | 02:27 | 10-2 | 8 | 4.0816 | 1 | 2 | 0 | 1 | 1.7730 |
| 3- Hidalgo H/ 5- Miles O/ 8- Prosper C/ 20- King L/ 32- Karlen L/ | 02:18 | 10-2 | 8 | 4.3478 | 4 | 1 | 0 | 1 | 1.8797 |
| 8- Prosper C/ 10- Tehrani B/ 13- Koval K/ 15- Jensen L/ 25- Cernugel S/ | 02:01 | 5-6 | -1 | 2.4793 | 0 | 0 | 0 | 0 | 2.6596 |
| 5- Miles O/ 8- Prosper C/ 11- Citron S/ 20- King L/ 21- Westbeld M/ | 01:59 | 5-0 | 5 | 2.5210 | 3 | 1 | 0 | 1 | 1.6667 |
| 8- Prosper C/ 13- Koval K/ 15- Jensen L/ 25- Cernugel S/ 32- Karlen L/ | 01:18 | 2-2 | 0 | 1.5385 | 2 | 0 | 2 | 0 | 0.5814 |
| 3- Hidalgo H/ 5- Miles O/ 11- Citron S/ 20- King L/ 32- Karlen L/ | 01:17 | 2-2 | 0 | 1.5584 | 1 | 0 | 0 | 1 | 1.0000 |
| 3- Hidalgo H/ 5- Miles O/ 8- Prosper C/ 21- Westbeld M/ 32- Karlen L/ | 01:05 | 4-0 | 4 | 3.6923 | 0 | 2 | 1 | 1 | 1.3889 |
| 5- Miles O/ 8- Prosper C/ 11- Citron S/ 20- King L/ 32- Karlen L/ | 01:00 | 3-0 | 3 | 3.0000 | 0 | 1 | 0 | 0 | 1.5000 |
| 3- Hidalgo H/ 5- Miles O/ 11- Citron S/ 13- Koval K/ 32- Karlen L/ | 00:35 | 4-0 | 4 | 6.8571 | 1 | 1 | 0 | 0 | 2.0000 |
| 3- Hidalgo H/ 8- Prosper C/ 11- Citron S/ 20- King L/ 32- Karlen L/ | 00:16 | 0-0 | 0 | 0.0000 | 0 | 0 | 0 | 0 | 0.0000 |