



Officials: Joseph Vaszily, Fatou Cissoko-Stephens, Rod Creech

Louisville - 59

Record: 20-9 (13-5)

NO.	Name	F	Min	FG			3P			FT			Rebounds			Fouls		TP	AS	TO	ST	Blocks		+/-
				M-A	M-A	M-A	OR	DR	TOT	PF	FD	OR	DR	TOT	BS	BA								
2	Nyla Harris	F	23:20	1-4	0-0	0-0	3	5	8	4	0	2	0	0	3	1	0	0	3	1	0	0	-14	
44	Olivia Cochran	F	25:51	1-8	0-0	5-8	1	4	5	2	5	7	0	2	0	2	0	1	2	0	1	2	-15	
12	Ja'Leah Williams	G	22:54	3-11	0-0	0-1	3	2	5	3	2	6	2	1	2	0	2	1	2	0	2	-2		
22	Tajianna Roberts	G	25:13	3-14	1-6	0-0	0	3	3	3	0	7	2	3	1	0	1	0	1	0	1	-19		
30	Jayda Curry	G	28:35	6-14	5-10	2-3	0	2	2	4	2	19	1	1	1	1	0	1	0	1	0	-17		
1	Imari Berry		14:02	1-7	0-2	0-0	2	1	3	2	1	2	0	0	0	1	0	0	0	0	0	5		
11	Elif Istanbuluoglu		20:42	1-3	0-0	0-0	4	1	5	2	2	2	1	0	0	0	0	0	0	0	0	6		
0	Izela Arenas		11:27	2-4	1-2	0-0	0	0	0	1	0	5	2	1	0	0	0	0	0	0	0	0		
13	Merissah Russell		09:47	1-3	1-3	0-0	0	1	1	1	0	3	0	1	0	0	0	0	0	0	0	-4		
4	Mackently Randolph		10:51	2-2	0-0	0-0	2	0	2	0	1	4	1	1	0	0	0	0	0	0	0	-2		
9	Anaya Hardy		01:14	0-0	0-0	0-0	0	0	0	0	0	0	0	0	0	0	0	0	0	1	0	-2		
15	Isla Juffermans		06:03	1-3	0-0	0-0	1	0	1	0	1	2	1	1	1	1	0	0	0	0	0	-1		
Team							4	1	5			0		2										
Totals				22-73	8-23	7-12	20	20	40	22	14	59	10	16	7	2	6						-13	

Shooting By Period		
1 st FG%	6-19	31.6%
3PT%	2-5	40.0%
FT%	1-2	50%
2 nd FG%	4-14	28.6%
3PT%	3-8	37.5%
FT%	2-2	100%
3 rd FG%	4-19	21.1%
3PT%	2-6	33.3%
FT%	2-4	50%
4 th FG%	8-21	38.1%
3PT%	1-4	25.0%
FT%	2-4	50%
GM FG%	22-73	30.1%
3PT%	8-23	34.8%
FT%	7-12	58.3%

Technical Fouls::NONE

Dead Ball Rebounds: 1, 0

Notre Dame - 72

Record: 25-4 (16-2)

NO.	Name	F	Min	FG			3P			FT			Rebounds			Fouls		TP	AS	TO	ST	Blocks		+/-
				M-A	M-A	M-A	OR	DR	TOT	PF	FD	OR	DR	TOT	BS	BA								
20	Liatu King	F	24:47	2-6	0-0	0-2	4	7	11	0	2	4	0	3	0	3	1	8						
21	Maddy Westbeld	F	21:31	4-8	1-4	0-0	1	2	3	3	1	9	0	3	0	0	0	-1						
3	Hannah Hidalgo	G	33:52	6-14	2-2	6-8	4	5	9	0	4	20	6	4	0	0	0	6						
5	Olivia Miles	G	37:51	3-9	3-6	6-6	0	5	5	1	4	15	3	2	2	0	0	17						
11	Sonia Citron	G	33:52	3-5	0-1	3-4	2	3	5	4	5	9	3	1	0	1	0	16						
8	Cassandre Prosper		14:43	0-2	0-1	0-0	0	0	0	1	0	0	0	2	2	1	0	6						
32	Liza Karlen		17:38	3-7	0-1	1-1	1	4	5	2	5	7	2	1	1	0	0	18						
13	Kate Koval		15:28	3-4	0-0	2-2	1	1	2	3	1	8	0	3	1	1	1	4						
10	Bella Tehrani		00:06	0-0	0-0	0-0	0	0	0	0	0	0	0	0	0	0	0	-3						
15	Luci Jensen		00:06	0-0	0-0	0-0	0	0	0	0	0	0	0	0	0	0	0	-3						
25	Sarah Cernugel		00:06	0-0	0-0	0-0	0	0	0	0	0	0	0	0	0	0	0	-3						
Team							0	8	8			0		0										
Totals				24-55	6-15	18-23	13	35	48	14	22	72	14	19	6	6	2	13						

Shooting By Period		
1 st FG%	5-15	33.3%
3PT%	2-4	50.0%
FT%	2-2	100%
2 nd FG%	9-17	52.9%
3PT%	0-2	0.0%
FT%	4-6	66.7%
3 rd FG%	5-14	35.7%
3PT%	1-4	25.0%
FT%	11-13	84.6%
4 th FG%	5-9	55.6%
3PT%	3-5	60.0%
FT%	1-2	50%
GM FG%	24-55	43.6%
3PT%	6-15	40.0%
FT%	18-23	78.3%

Technical Fouls::NONE

Dead Ball Rebounds: 3, 0

	LOU	UND
Biggest lead	3 (1 st 9:38)	21 (4 th 9:19)
Best Scoring Run	7(4 th 0:03)	10(3 rd 1:07)
Lead Changes	5	
Times Tied	5	
Time with Lead	06:56	29:47

	LOU	UND
Points from		
Turnovers	18	14
Paint	22	26
Second Chance	15	21
Fast Breaks	13	8
Bench	18	15

	Period by Period Scoring				
	1st	2nd	3rd	4th	TOT
LOU	15	13	12	19	59
UND	14	22	22	14	72



Period 1

Quarter Starters:

UND	3 Hidalgo H	5 Miles O	11 Citron S	20 King L	21 Westbeld M
LOU	2 Harris N	12 Williams J	22 Roberts T	30 Curry J	44 Cochran O

Game Time	UND	Score	Diff	LOU
10:00	21 WESTBELD M jumpball lost			44 COCHRAN O jumpball won
09:38		0-3	-3	22 ROBERTS T 3pt FG , jump shot made (3)
09:38				12 WILLIAMS J assist (1)
09:17	20 KING L 2pt FG outside the paint, jump shot missed			
09:13				12 WILLIAMS J defensive rebound (1)
08:59				2 HARRIS N 2pt FG outside the paint, jump shot missed
08:55	20 KING L defensive rebound (1)			
08:50	3 HIDALGO H 2pt FG outside the paint, jump shot missed			
08:45				2 HARRIS N defensive rebound (1)
08:27				30 CURRY J 3pt FG , jump shot missed
08:23	3 HIDALGO H defensive rebound (1)			
08:21	20 KING L 2pt FG fast break in the paint, driving layup made (2)	2-3	-1	
08:21	3 HIDALGO H assist (1)			
07:59		2-5	-3	12 WILLIAMS J 2pt FG in the paint, floating jump shot made (2)
07:48	5 MILES O 3pt FG , jump shot made (3)	5-5	0	
07:31	5 MILES O steal (1)			22 ROBERTS T turnover lost ball (1)
07:28	21 WESTBELD M turnover bad pass (1)			12 WILLIAMS J steal (1)
07:20	11 CITRON S foul personal (1 - 1)			44 COCHRAN O foul drawn (1)
07:20				30 CURRY J substitution out
07:20				1 BERRY I substitution in
07:15		5-7	-2	22 ROBERTS T 2pt FG from turnover in the paint, floating jump shot made (5)
06:49	20 KING L 2pt FG outside the paint, jump shot made (4)	7-7	0	
06:49	3 HIDALGO H assist (2)			
06:21				44 COCHRAN O 2pt FG in the paint, turnaround jump shot missed
06:19	defensive rebound (3)			
05:58	21 WESTBELD M 2pt FG in the paint, turnaround jump shot made (2)	9-7	2	
05:58	11 CITRON S assist (1)			
05:51		9-9	0	2 HARRIS N 2pt FG fast break in the paint, layup made (2)
05:51				22 ROBERTS T assist (1)
05:37	21 WESTBELD M 3pt FG , jump shot missed			
05:33				12 WILLIAMS J defensive rebound (2)
05:20				22 ROBERTS T 3pt FG , jump shot missed
05:16				2 HARRIS N offensive rebound (2)
05:14				22 ROBERTS T 2pt FG second chance outside the paint, floating jump shot missed
05:11	5 MILES O defensive rebound (1)			
05:04	5 MILES O 3pt FG , jump shot missed			
05:01				2 HARRIS N defensive rebound (3)
04:52				12 WILLIAMS J 2pt FG in the paint, jump shot missed
04:51				44 COCHRAN O offensive rebound (1)
04:51	21 WESTBELD M foul shooting (1 - 2)			44 COCHRAN O foul drawn (2)



Game Time	UND	Score	Diff	LOU
04:51	Timeout media			
04:51	11 CITRON S substitution out			
04:51	21 WESTBELD M substitution out			
04:51	8 PROSPER C substitution in			
04:51	32 KARLEN L substitution in			
04:51				2 HARRIS N substitution out
04:51				11 ISTANBULLUOGLU E substitution in
04:51		9-10	-1	44 COCHRAN O free throw 1 - 2 made (1)
04:51				44 COCHRAN O free throw 2 - 2 missed
04:48				11 ISTANBULLUOGLU E offensive rebound (1)
04:36	32 KARLEN L foul drawn (1)			22 ROBERTS T foul offensive (1 - 1)
04:36				22 ROBERTS T turnover offensive (2)
04:13	3 HIDALGO H 3pt FG from turnover, jump shot made (3)	12-10	2	
04:13	32 KARLEN L assist (1)			
03:43				12 WILLIAMS J 2pt FG in the paint, jump shot blocked
03:43	20 KING L block (1)			
03:43	20 KING L defensive rebound (2)			
03:43	jump ball situation			
03:43	20 KING L substitution out			
03:43	13 KOVAL K substitution in			
03:43				22 ROBERTS T substitution out
03:43				30 CURRY J substitution in
03:32	8 PROSPER C 2pt FG in the paint, layup missed			
03:29				44 COCHRAN O defensive rebound (2)
03:23		12-12	0	30 CURRY J 2pt FG outside the paint, pull up jump shot made (2)
03:12	13 KOVAL K foul drawn (1)			12 WILLIAMS J foul shooting (1 - 2)
03:12	5 MILES O substitution out			
03:12	11 CITRON S substitution in			
03:12	13 KOVAL K free throw 1 - 2 made (1)	13-12	1	
03:12	13 KOVAL K free throw 2 - 2 made (2)	14-12	2	
03:04				30 CURRY J 2pt FG outside the paint, pull up jump shot missed
03:02				11 ISTANBULLUOGLU E offensive rebound (2)
03:02	32 KARLEN L substitution out			
03:02	21 WESTBELD M substitution in			
03:00				44 COCHRAN O 2pt FG second chance in the paint, layup missed
02:57				1 BERRY I offensive rebound (1)
02:49		14-15	-1	30 CURRY J 3pt FG second chance, jump shot made (5)
02:32	13 KOVAL K foul offensive (1 - 3)			11 ISTANBULLUOGLU E foul drawn (1)
02:32	13 KOVAL K turnover offensive (1)			
02:32				44 COCHRAN O substitution out
02:32				2 HARRIS N substitution in
02:32				12 WILLIAMS J substitution out
02:32				22 ROBERTS T substitution in
02:14				30 CURRY J 2pt FG from turnover in the paint, driving layup missed
02:11				1 BERRY I offensive rebound (2)
02:11	21 WESTBELD M foul personal (2 - 4)			1 BERRY I foul drawn (1)



Official Basketball Play by Play - 1st Period
Louisville at Notre Dame
 03/02/25 Purcell Pavilion at the Joyce Center, Notre Dame
 2024-25 Women's Basketball

Game Time: 12:00 PM
Game Duration: 2:00
Attendance: 8,852

Officials: Joseph Vaszily, Fatou Cissoko-Stephens, Rod Creech

Game Time	UND	Score	Diff	LOU
02:11	8 PROSPER C substitution out			
02:11	21 WESTBELD M substitution out			
02:11	5 MILES O substitution in			
02:11	20 KING L substitution in			
02:09				2 HARRIS N 2pt FG from turnover second chance outside the paint, jump shot missed
02:06	20 KING L defensive rebound (3)			
02:00	3 HIDALGO H 2pt FG in the paint, floating jump shot missed			
01:59	20 KING L offensive rebound (4)			
01:59	20 KING L foul drawn (1)			1 BERRY I foul personal (1 - 3)
01:54	3 HIDALGO H 2pt FG second chance outside the paint, jump shot missed			
01:50				1 BERRY I defensive rebound (3)
01:39				1 BERRY I 2pt FG outside the paint, jump shot missed
01:36	3 HIDALGO H defensive rebound (2)			
01:26	3 HIDALGO H turnover out of bounds (1)			
01:26	3 HIDALGO H substitution out			
01:26	13 KOVAL K substitution out			
01:26	8 PROSPER C substitution in			
01:26	32 KARLEN L substitution in			
01:14	8 PROSPER C steal (1)			22 ROBERTS T turnover lost ball (3)
01:10	8 PROSPER C turnover bad pass (1)			
01:10				1 BERRY I substitution out
01:10				12 WILLIAMS J substitution in
00:52				22 ROBERTS T 3pt FG from turnover, jump shot missed
00:49	5 MILES O defensive rebound (2)			
00:35	5 MILES O 2pt FG in the paint, driving layup missed			
00:32	20 KING L offensive rebound (5)			
00:30	5 MILES O 2pt FG second chance in the paint, jump shot missed			
00:26	20 KING L offensive rebound (6)			
00:24	32 KARLEN L 2pt FG second chance outside the paint, jump shot missed			
00:21				11 ISTANBULLUOGLU E defensive rebound (3)
00:03	32 KARLEN L foul drawn (2)			12 WILLIAMS J foul offensive (2 - 4)
00:03				12 WILLIAMS J turnover offensive (1)
00:03				12 WILLIAMS J substitution out
00:03				0 ARENAS I substitution in
END OF PERIOD				
UND 14-15 LOU				



Louisville at Notre Dame

03/02/25 Purcell Pavilion at the Joyce Center, Notre Dame
2024-25 Women's Basketball

Game Time: 12:00 PM
Game Duration: 2:00
Attendance: 8,852

Officials: Joseph Vaszily, Fatou Cissoko-Stephens, Rod Creech

Louisville - 15

NO.	Name	F	Min	FG			Rebounds			Fouls		TP	AS	TO	ST	Blocks		+/-
				M-A	3P	FT	OR	DR	TOT	PF	FD					BS	BA	
2	Nyla Harris	F	07:41	1-3	0-0	0-0	1	2	3	0	0	2	0	0	0	0	0	0
44	Olivia Cochran	F	07:28	0-2	0-0	1-2	1	1	2	0	2	1	0	0	0	0	0	1
12	Ja'Leah Williams	G	08:35	1-3	0-0	0-0	0	2	2	2	0	2	1	1	1	0	1	1
22	Tajianna Roberts	G	08:49	2-5	1-3	0-0	0	0	0	1	0	5	1	3	0	0	0	-2
30	Jayda Curry	G	06:23	2-5	1-2	0-0	0	0	0	0	0	5	0	0	0	0	0	3
1	Imari Berry		06:10	0-1	0-0	0-0	2	1	3	1	1	0	0	0	0	0	0	1
11	Elif Istanbuluoglu		04:51	0-0	0-0	0-0	2	1	3	0	1	0	0	0	0	0	0	1
0	Izela Arenas		00:03	0-0	0-0	0-0	0	0	0	0	0	0	0	0	0	0	0	0
Team							0	0	0		0		0					
Totals				6-19	2-5	1-2	6	7	13	4	4	15	2	4	1	0	1	1

Shooting By Period		
1st FG%	6-19	31.6%
3PT%	2-5	40.0%
FT%	1-2	50%
GM FG%	6-19	31.6%
3PT%	2-5	40.0%
FT%	1-2	50.0%

Dead Ball Rebounds: 0, 0

Technical Fouls::NONE

Notre Dame - 14

NO.	Name	F	Min	FG			Rebounds			Fouls		TP	AS	TO	ST	Blocks		+/-
				M-A	3P	FT	OR	DR	TOT	PF	FD					BS	BA	
20	Liatu King	F	08:28	2-3	0-0	0-0	3	3	6	0	1	4	0	0	0	1	0	2
21	Maddy Westbeld	F	06:00	1-2	0-1	0-0	0	0	0	2	0	2	0	1	0	0	0	-3
3	Hannah Hidalgo	G	08:34	1-4	1-1	0-0	0	2	2	0	0	3	2	1	0	0	0	-1
5	Olivia Miles	G	08:59	1-4	1-2	0-0	0	2	2	0	0	3	0	0	1	0	0	0
11	Sonia Citron	G	08:21	0-0	0-0	0-0	0	0	0	1	0	0	1	0	0	0	0	-1
8	Cassandre Prosper		04:06	0-1	0-0	0-0	0	0	0	0	0	0	0	1	1	0	0	-1
32	Liza Karlen		03:15	0-1	0-0	0-0	0	0	0	0	2	0	1	0	0	0	0	2
13	Kate Koval		02:17	0-0	0-0	2-2	0	0	0	1	1	2	0	1	0	0	0	-3
Team							0	1	1		0		0					
Totals				5-15	2-4	2-2	3	8	11	4	4	14	4	4	2	1	0	-1

Shooting By Period		
1st FG%	5-15	33.3%
3PT%	2-4	50.0%
FT%	2-2	100%
GM FG%	5-15	33.3%
3PT%	2-4	50.0%
FT%	2-2	100.0%

Dead Ball Rebounds: 0, 0

Technical Fouls::NONE

	LOU	UND
Biggest lead	3 (1 st 9:38)	2 (1 st 5:58)
Best Scoring Run	3 (1 st 9:38)	4 (1 st 5:58)
Lead Changes	4	
Times Tied	4	
Time with Lead	05:43	01:20

Points from	LOU	UND
Turnovers	2	3
Paint	6	4
Second Chance	4	0
Fast Breaks	2	2
Bench	0	2

Period by Period Scoring					
	1st	2nd	3rd	4th	TOT
LOU	15	13	12	19	59
UND	14	22	22	14	72



Period 2

Quarter Starters:

UND	5 Miles O	8 Prosper C	11 Citron S	20 King L	32 Karlen L
LOU	0 Arenas I	2 Harris N	11 Istanbuluoglu E	22 Roberts T	30 Curry J

Game Time	UND	Score	Diff	LOU
09:52	32 KARLEN L steal (1)			2 HARRIS N turnover bad pass (1)
09:28	20 KING L 2pt FG from turnover in the paint, layup missed			
09:25				2 HARRIS N defensive rebound (4)
09:17				30 CURRY J 2pt FG in the paint, floating jump shot missed
09:14	defensive rebound (12)			
09:14				2 HARRIS N substitution out
09:14				44 COCHRAN O substitution in
08:47	11 CITRON S 2pt FG outside the paint, pull up jump shot made (2)	16-15	1	
08:25	5 MILES O steal (2)			0 ARENAS I turnover lost ball (1)
08:25	8 PROSPER C substitution out			
08:25	3 HIDALGO H substitution in			
08:13	11 CITRON S foul drawn (1)			22 ROBERTS T foul personal (2 - 1)
08:04	3 HIDALGO H 2pt FG from turnover in the paint, jump shot missed			
08:04	20 KING L offensive rebound (7)			
08:04	jump ball situation			
08:03				22 ROBERTS T substitution out
08:03				13 RUSSELL M substitution in
08:02	11 CITRON S 2pt FG second chance outside the paint, jump shot made (4)	18-15	3	
08:02	3 HIDALGO H assist (3)			
07:48		18-17	1	44 COCHRAN O 2pt FG in the paint, layup made (3)
07:35	20 KING L 2pt FG outside the paint, jump shot missed			
07:32	32 KARLEN L offensive rebound (1)			
07:31	32 KARLEN L 2pt FG second chance in the paint, layup made (2)	20-17	3	
07:23		20-20	0	13 RUSSELL M 3pt FG fast break, jump shot made (3)
07:23				30 CURRY J assist (1)
07:09	5 MILES O 3pt FG , jump shot missed			
07:06	11 CITRON S offensive rebound (1)			
07:03	11 CITRON S foul drawn (2)			13 RUSSELL M foul shooting (1 - 2)
07:03	20 KING L substitution out			
07:03	13 KOVAL K substitution in			
07:03	11 CITRON S free throw 1 - 2 made (5)	21-20	1	
07:03	11 CITRON S free throw 2 - 2 made (6)	22-20	2	
06:48				44 COCHRAN O 2pt FG outside the paint, turnaround jump shot missed
06:44	32 KARLEN L defensive rebound (2)			
06:31	32 KARLEN L 3pt FG , jump shot missed			
06:27	3 HIDALGO H offensive rebound (3)			
06:27	3 HIDALGO H foul drawn (1)			0 ARENAS I foul shooting (1 - 3)
06:27				0 ARENAS I substitution out
06:27				11 ISTANBULLUOGLU E substitution out
06:27				1 BERRY I substitution in



Official Basketball Play by Play - 2nd Period
Louisville at Notre Dame
 03/02/25 Purcell Pavilion at the Joyce Center, Notre Dame
 2024-25 Women's Basketball

Game Time: 12:00 PM
Game Duration: 2:00
Attendance: 8,852

Officials: Joseph Vaszily, Fatou Cissoko-Stephens, Rod Creech

Game Time	UND	Score	Diff	LOU
06:27				2 HARRIS N substitution in
06:27	3 HIDALGO H free throw 1 - 2 made (4)	23-20	3	
06:27	3 HIDALGO H free throw 2 - 2 made (5)	24-20	4	
06:23				1 BERRY I 3pt FG , jump shot missed
06:18				offensive rebound (15)
06:18				Timeout 30 Sec
06:02				2 HARRIS N turnover lost ball (2)
05:43	13 KOVAL K 2pt FG from turnover in the paint, layup made (4)	26-20	6	
05:43	11 CITRON S assist (2)			
05:16	jump ball situation			
05:16				1 BERRY I substitution out
05:16				2 HARRIS N substitution out
05:16				4 RANDOLPH M substitution in
05:16				11 ISTANBULLUOGLU E substitution in
05:15	32 KARLEN L foul shooting (1 - 1)			44 COCHRAN O foul drawn (3)
05:15		26-21	5	44 COCHRAN O free throw 1 - 2 made (4)
05:15		26-22	4	44 COCHRAN O free throw 2 - 2 made (5)
05:07	32 KARLEN L foul drawn (3)			30 CURRY J foul personal (1 - 4)
04:54	32 KARLEN L 2pt FG in the paint, layup missed			
04:51				44 COCHRAN O defensive rebound (3)
04:45		26-25	1	30 CURRY J 3pt FG , step back jump shot made (8)
04:28	13 KOVAL K foul offensive (2 - 2)			4 RANDOLPH M foul drawn (1)
04:28	13 KOVAL K turnover offensive (2)			
04:28	13 KOVAL K substitution out			
04:28	20 KING L substitution in			
04:10				30 CURRY J 3pt FG from turnover, step back jump shot missed
04:06	20 KING L defensive rebound (8)			
03:58	3 HIDALGO H 2pt FG fast break in the paint, driving layup made (7)	28-25	3	
03:48				13 RUSSELL M 3pt FG , jump shot missed
03:45	20 KING L defensive rebound (9)			
03:37	3 HIDALGO H 2pt FG in the paint, driving layup made (9)	30-25	5	
03:18				11 ISTANBULLUOGLU E 2pt FG in the paint, turnaround jump shot missed
03:17	defensive rebound (20)			
03:17	32 KARLEN L substitution out			
03:17	21 WESTBELD M substitution in			
02:58	11 CITRON S turnover travel (1)			
02:28		30-28	2	30 CURRY J 3pt FG from turnover, jump shot made (11)
02:19	11 CITRON S 2pt FG fast break in the paint, driving layup made (8)	32-28	4	
02:19	5 MILES O assist (1)			
02:08				13 RUSSELL M 3pt FG , jump shot missed
02:05	3 HIDALGO H defensive rebound (4)			
01:57	3 HIDALGO H 2pt FG outside the paint, floating jump shot missed			
01:55	3 HIDALGO H offensive rebound (5)			
01:55	3 HIDALGO H 2pt FG second chance in the paint, floating jump shot made (11)	34-28	6	
01:55	21 WESTBELD M substitution out			
01:55	8 PROSPER C substitution in			



Official Basketball Play by Play - 2nd Period
Louisville at Notre Dame
 03/02/25 Purcell Pavilion at the Joyce Center, Notre Dame
 2024-25 Women's Basketball

Game Time: 12:00 PM
Game Duration: 2:00
Attendance: 8,852

Officials: Joseph Vaszily, Fatou Cissoko-Stephens, Rod Creech

Game Time	UND	Score	Diff	LOU
01:55				11 ISTANBULLUOGLU E substitution out
01:55				30 CURRY J substitution out
01:55				9 HARDY A substitution in
01:55				12 WILLIAMS J substitution in
01:25				44 COCHRAN O 2pt FG in the paint, layup blocked
01:25	20 KING L block (2)			
01:25				offensive rebound (17)
01:25	8 PROSPER C substitution out			
01:25	21 WESTBELD M substitution in			
01:25				4 RANDOLPH M substitution out
01:25				22 ROBERTS T substitution in
01:24				turnover shot clock (8)
01:12	20 KING L 2pt FG from turnover in the paint, layup blocked			
01:12				9 HARDY A block (1)
01:07	21 WESTBELD M offensive rebound (1)			
00:58	21 WESTBELD M 2pt FG from turnover second chance outside the paint, jump shot made (4)	36-28	8	
00:58	3 HIDALGO H assist (4)			
00:46				12 WILLIAMS J 2pt FG in the paint, jump shot missed
00:44	11 CITRON S defensive rebound (2)			
00:40	20 KING L foul drawn (2)			22 ROBERTS T foul personal (3 - 5)
00:40				9 HARDY A substitution out
00:40				13 RUSSELL M substitution out
00:40				2 HARRIS N substitution in
00:40				4 RANDOLPH M substitution in
00:40				22 ROBERTS T substitution out
00:40				13 RUSSELL M substitution in
00:40	20 KING L free throw fast break 1 - 2 missed			
00:40	offensive dead ball rebound (1)			
00:40	20 KING L free throw fast break 2 - 2 missed			
00:39				44 COCHRAN O defensive rebound (4)
00:24	5 MILES O foul personal (1 - 3)			12 WILLIAMS J foul drawn (1)
00:24				12 WILLIAMS J substitution out
00:24				13 RUSSELL M substitution out
00:24				1 BERRY I substitution in
00:24				30 CURRY J substitution in
00:05				30 CURRY J 3pt FG , jump shot missed
00:03				offensive dead ball rebound (1)
00:03				turnover shot clock (9)
END OF PERIOD				
UND 36-28 LOU				



Louisville at Notre Dame

03/02/25 Purcell Pavilion at the Joyce Center, Notre Dame
2024-25 Women's Basketball

Game Time: 12:00 PM
Game Duration: 2:00
Attendance: 8,852

Officials: Joseph Vaszily, Fatou Cissoko-Stephens, Rod Creech

Louisville - 13

NO.	Name	F	Min	FG			Rebounds			Fouls		TP	AS	TO	ST	Blocks		+/-
				M-A	3P	FT	OR	DR	TOT	PF	FD					BS	BA	
2	Nyla Harris	F	02:38	0-0	0-0	0-0	0	1	1	0	0	0	0	2	0	0	0	-4
44	Olivia Cochran	F	09:14	1-3	0-0	2-2	0	2	2	0	1	4	0	0	0	0	1	-9
12	Ja'Leah Williams	G	01:31	0-1	0-0	0-0	0	0	0	0	1	0	0	0	0	0	-2	
22	Tajianna Roberts	G	02:41	0-0	0-0	0-0	0	0	0	2	0	0	0	0	0	0	-4	
30	Jayda Curry	G	08:29	2-5	2-4	0-0	0	0	0	1	0	6	1	0	0	0	-7	
0	Izela Arenas		03:33	0-0	0-0	0-0	0	0	0	1	0	0	0	1	0	0	-3	
13	Merissah Russell		07:39	1-3	1-3	0-0	0	0	0	1	0	3	0	0	0	0	-7	
1	Imari Berry		01:35	0-1	0-1	0-0	0	0	0	0	0	0	0	0	0	0	-4	
4	Mackeny Randolph		04:32	0-0	0-0	0-0	0	0	0	0	1	0	0	0	0	0	0	
11	Elif Istanbuluoglu		06:54	0-1	0-0	0-0	0	0	0	0	0	0	0	0	0	0	-3	
9	Anaya Hardy		01:14	0-0	0-0	0-0	0	0	0	0	0	0	0	0	1	0	-2	
Team							2	0	2			0		2				
Totals				4-14	3-8	2-2	2	3	5	5	3	13	1	5	0	1	1	-9

Shooting By Period		
2 nd FG%	4-14	28.6%
3PT%	3-8	37.5%
FT%	2-2	100%
GM FG%	4-14	28.6%
3PT%	3-8	37.5%
FT%	2-2	100.0%

Dead Ball Rebounds: 1, 0

Technical Fouls::NONE

Notre Dame - 22

NO.	Name	F	Min	FG			Rebounds			Fouls		TP	AS	TO	ST	Blocks		+/-
				M-A	3P	FT	OR	DR	TOT	PF	FD					BS	BA	
20	Liatu King	F	07:25	0-3	0-0	0-2	1	2	3	0	1	0	0	0	0	1	1	8
21	Maddy Westbeld	F	02:47	1-1	0-0	0-0	1	0	1	0	0	2	0	0	0	0	3	
3	Hannah Hidalgo	G	08:25	3-5	0-0	2-2	2	1	3	0	1	8	2	0	0	0	7	
5	Olivia Miles	G	10:00	0-1	0-1	0-0	0	0	0	1	0	0	1	0	1	0	9	
11	Sonia Citron	G	10:00	3-3	0-0	2-2	1	1	2	0	2	8	1	1	0	0	9	
32	Liza Karlen		06:43	1-3	0-1	0-0	1	1	2	1	1	2	0	0	1	0	6	
13	Kate Koval		02:35	1-1	0-0	0-0	0	0	0	1	0	2	0	1	0	0	1	
8	Cassandre Prosper		02:05	0-0	0-0	0-0	0	0	0	0	0	0	0	0	0	0	2	
Team							0	2	2			0		0				
Totals				9-17	0-2	4-6	6	7	13	3	5	22	4	2	2	1	1	9

Shooting By Period		
2 nd FG%	9-17	52.9%
3PT%	0-2	0.0%
FT%	4-6	66.7%
GM FG%	9-17	52.9%
3PT%	0-2	0.0%
FT%	4-6	66.7%

Dead Ball Rebounds: 1, 0

Technical Fouls::NONE

	LOU	UND
Biggest lead	1 (2 nd 9:28)	8 (2 nd 0:58)
Best Scoring Run	5(2 nd 4:45)	6(2 nd 5:43)
Lead Changes	1	
Times Tied	1	
Time with Lead	00:41	08:27

Points from	LOU	UND
Turnovers	3	4
Paint	2	12
Second Chance	0	12
Fast Breaks	3	4
Bench	3	4

	Period by Period Scoring				
	1st	2nd	3rd	4th	TOT
LOU	15	13	12	19	59
UND	14	22	22	14	72



Officials: Joseph Vaszily, Fatou Cissoko-Stephens, Rod Creech

Louisville - 28

NO.	Name	F	Min	FG			Rebounds			Fouls		TP	AS	TO	ST	Blocks		+/-
				M-A	M-A	M-A	OR	DR	TOT	PF	FD					BS	BA	
2	Nyla Harris	F	10:19	1-3	0-0	0-0	1	3	4	0	0	2	0	2	0	0	0	-4
44	Olivia Cochran	F	16:42	1-5	0-0	3-4	1	3	4	0	3	5	0	0	0	0	1	-8
12	Ja'Leah Williams	G	10:05	1-4	0-0	0-0	0	2	2	2	1	2	1	1	1	0	1	-1
22	Tajianna Roberts	G	11:30	2-5	1-3	0-0	0	0	0	3	0	5	1	3	0	0	0	-6
30	Jayda Curry	G	14:52	4-10	3-6	0-0	0	0	0	1	0	11	1	0	0	0	0	-4
1	Imari Berry		07:45	0-2	0-1	0-0	2	1	3	1	1	0	0	0	0	0	0	-3
11	Elif Istanbuluoglu		11:45	0-1	0-0	0-0	2	1	3	0	1	0	0	0	0	0	0	-2
0	Izela Arenas		03:36	0-0	0-0	0-0	0	0	0	1	0	0	0	1	0	0	0	-3
13	Merissah Russell		07:39	1-3	1-3	0-0	0	0	0	1	0	3	0	0	0	0	0	-7
4	Mackently Randolph		04:32	0-0	0-0	0-0	0	0	0	0	1	0	0	0	0	0	0	0
9	Anaya Hardy		01:14	0-0	0-0	0-0	0	0	0	0	0	0	0	0	0	1	0	-2
Team							2	0	2			0		2				
Totals				10-33	5-13	3-4	8	10	18	9	7	28	3	9	1	1	2	-8

Shooting By Period		
1 st FG%	6-19	31.6%
3PT%	2-5	40.0%
FT%	1-2	50%
2 nd FG%	4-14	28.6%
3PT%	3-8	37.5%
FT%	2-2	100%
GM FG%	10-33	30.3%
3PT%	5-13	38.5%
FT%	3-4	75.0%

Dead Ball Rebounds: 1, 0

Technical Fouls::NONE

Notre Dame - 36

NO.	Name	F	Min	FG			Rebounds			Fouls		TP	AS	TO	ST	Blocks		+/-
				M-A	M-A	M-A	OR	DR	TOT	PF	FD					BS	BA	
20	Liattu King	F	15:53	2-6	0-0	0-2	4	5	9	0	2	4	0	0	0	2	1	10
21	Maddy Westbeld	F	08:47	2-3	0-1	0-0	1	0	1	2	0	4	0	1	0	0	0	0
3	Hannah Hidalgo	G	16:59	4-9	1-1	2-2	2	3	5	0	1	11	4	1	0	0	0	6
5	Olivia Miles	G	18:59	1-5	1-3	0-0	0	2	2	1	0	3	1	0	2	0	0	9
11	Sonia Citron	G	18:21	3-3	0-0	2-2	1	1	2	1	2	8	2	1	0	0	0	8
8	Cassandre Prosper		06:11	0-1	0-0	0-0	0	0	0	0	0	0	0	1	1	0	0	1
32	Liza Karlen		09:58	1-4	0-1	0-0	1	1	2	1	3	2	1	0	1	0	0	8
13	Kate Koval		04:52	1-1	0-0	2-2	0	0	0	2	1	4	0	2	0	0	0	-2
Team							0	3	3			0		0				
Totals				14-32	2-6	6-8	9	15	24	7	9	36	8	6	4	2	1	8

Shooting By Period		
1 st FG%	5-15	33.3%
3PT%	2-4	50.0%
FT%	2-2	100%
2 nd FG%	9-17	52.9%
3PT%	0-2	0.0%
FT%	4-6	66.7%
GM FG%	14-32	43.8%
3PT%	2-6	33.3%
FT%	6-8	75.0%

Dead Ball Rebounds: 1, 0

Technical Fouls::NONE

	LOU	UND
Biggest lead	3 (1 st 9:38)	8 (2 nd 0:58)
Best Scoring Run	5(2 nd 4:45)	6(2 nd 5:43)
Lead Changes	5	
Times Tied	5	
Time with Lead	06:56	09:47

Points from	LOU	UND
Turnovers	5	7
Paint	8	16
Second Chance	4	12
Fast Breaks	5	6
Bench	3	6

Period by Period Scoring					
	1st	2nd	3rd	4th	TOT
LOU	15	13	12	19	59
UND	14	22	22	14	72



Period 3

Quarter Starters:

UND	3 Hidalgo H	5 Miles O	11 Citron S	20 King L	21 Westbeld M
LOU	2 Harris N	12 Williams J	22 Roberts T	30 Curry J	44 Cochran O

Game Time	UND	Score	Diff	LOU
10:00				1 BERRY I substitution out
10:00				4 RANDOLPH M substitution out
10:00				12 WILLIAMS J substitution in
10:00				22 ROBERTS T substitution in
09:36	20 KING L turnover travel (1)			
09:10				12 WILLIAMS J 2pt FG from turnover outside the paint, jump shot missed
09:06				2 HARRIS N offensive rebound (5)
09:06				2 HARRIS N 2pt FG from turnover second chance in the paint, jump shot missed
09:03				12 WILLIAMS J offensive rebound (3)
09:00				22 ROBERTS T 2pt FG from turnover second chance outside the paint, floating jump shot missed
08:59	defensive rebound (25)			
08:40	21 WESTBELD M 3pt FG , jump shot missed			
08:37	3 HIDALGO H offensive rebound (6)			
08:37	3 HIDALGO H foul drawn (2)			2 HARRIS N foul shooting (1 - 1)
08:37	3 HIDALGO H free throw 1 - 2 made (12)	37-28	9	
08:37	3 HIDALGO H free throw 2 - 2 missed			
08:37				2 HARRIS N defensive rebound (6)
08:18	21 WESTBELD M foul drawn (1)			44 COCHRAN O foul offensive (1 - 2)
08:18				44 COCHRAN O turnover offensive (1)
07:52	5 MILES O turnover lost ball (1)			
07:36				12 WILLIAMS J 2pt FG from turnover in the paint, floating jump shot blocked
07:36	11 CITRON S block (1)			
07:31	11 CITRON S defensive rebound (3)			
07:29	11 CITRON S 2pt FG in the paint, driving layup missed			
07:25				44 COCHRAN O defensive rebound (5)
07:21		37-31	6	30 CURRY J 3pt FG , jump shot made (14)
07:21				12 WILLIAMS J assist (2)
07:12	3 HIDALGO H 2pt FG in the paint, floating jump shot missed			
07:08				22 ROBERTS T defensive rebound (1)
07:05		37-34	3	30 CURRY J 3pt FG fast break, jump shot made (17)
07:05				22 ROBERTS T assist (2)
07:05	Timeout 30 Sec			
06:55	11 CITRON S foul drawn (3)			30 CURRY J foul shooting (2 - 3)
06:55	11 CITRON S free throw 1 - 2 missed			
06:55	offensive dead ball rebound (2)			
06:55	11 CITRON S free throw 2 - 2 made (9)	38-34	4	
06:32				44 COCHRAN O 2pt FG outside the paint, jump shot missed
06:28	5 MILES O defensive rebound (3)			
06:20	21 WESTBELD M 3pt FG , jump shot missed			
06:17				2 HARRIS N defensive rebound (7)



Officials: Joseph Vaszily, Fatou Cissoko-Stephens, Rod Creech

Game Time	UND	Score	Diff	LOU
06:13				12 WILLIAMS J 2pt FG in the paint, pull up jump shot missed
06:11	defensive rebound (29)			
06:11	20 KING L substitution out			
06:11	21 WESTBELD M substitution out			
06:11	13 KOVAL K substitution in			
06:11	32 KARLEN L substitution in			
05:52	13 KOVAL K 2pt FG in the paint, layup made (6)	40-34	6	
05:52	11 CITRON S assist (3)			
05:43	32 KARLEN L foul drawn (4)			2 HARRIS N foul offensive (2 - 4)
05:43				2 HARRIS N turnover offensive (3)
05:43	5 MILES O substitution out			
05:43	8 PROSPER C substitution in			
05:23	13 KOVAL K 2pt FG from turnover in the paint, layup blocked			
05:23				44 COCHRAN O block (1)
05:22				defensive rebound (25)
04:59				44 COCHRAN O 2pt FG in the paint, layup blocked
04:59	13 KOVAL K block (1)			
04:58				offensive rebound (26)
04:58	Timeout media			
04:55				30 CURRY J 3pt FG second chance, jump shot blocked
04:55	8 PROSPER C block (1)			
04:50	3 HIDALGO H defensive rebound (7)			
04:47	8 PROSPER C 3pt FG , jump shot missed			
04:45				30 CURRY J defensive rebound (1)
04:41	11 CITRON S foul shooting (2 - 1)			44 COCHRAN O foul drawn (4)
04:41	8 PROSPER C substitution out			
04:41	5 MILES O substitution in			
04:41		40-35	5	44 COCHRAN O free throw fast break 1 - 2 made (6)
04:41				44 COCHRAN O free throw fast break 2 - 2 missed
04:39	5 MILES O defensive rebound (4)			
04:32	5 MILES O 2pt FG outside the paint, step back jump shot missed			
04:28	13 KOVAL K offensive rebound (1)			
04:15	32 KARLEN L 2pt FG second chance in the paint, layup made (4)	42-35	7	
04:15	3 HIDALGO H assist (5)			
04:15	32 KARLEN L foul drawn (5)			2 HARRIS N foul shooting (3 - 5)
04:15	32 KARLEN L free throw 1 - 1 made (5)	43-35	8	
03:59	13 KOVAL K steal (1)			44 COCHRAN O turnover lost ball (2)
03:41	11 CITRON S substitution out			
03:41	8 PROSPER C substitution in			
03:37	5 MILES O foul drawn (1)			44 COCHRAN O foul shooting (2 - 6)
03:37				44 COCHRAN O substitution out
03:37				15 JUFFERMANS I substitution in
03:37	5 MILES O free throw 1 - 2 made (4)	44-35	9	
03:37	5 MILES O free throw 2 - 2 made (5)	45-35	10	
03:26		45-37	8	22 ROBERTS T 2pt FG in the paint, layup made (7)
03:26				15 JUFFERMANS I assist (1)
03:15	3 HIDALGO H 2pt FG outside the paint, floating jump shot missed			
03:09				22 ROBERTS T defensive rebound (2)



Officials: Joseph Vaszily, Fatou Cissoko-Stephens, Rod Creech

Game Time	UND	Score	Diff	LOU
03:08				22 ROBERTS T 2pt FG in the paint, driving layup missed
03:05	13 KOVAL K defensive rebound (2)			
03:01	3 HIDALGO H foul drawn (3)			30 CURRY J foul shooting (3 - 7)
03:01	3 HIDALGO H free throw fast break 1 - 2 made (13)	46-37	9	
03:01	3 HIDALGO H free throw fast break 2 - 2 made (14)	47-37	10	
03:01	3 HIDALGO H substitution out			
03:01	11 CITRON S substitution in			
02:45				15 JUFFERMANS I turnover lost ball (1)
02:32	13 KOVAL K 2pt FG from turnover in the paint, layup made (8)	49-37	12	
02:32	32 KARLEN L assist (2)			
02:19				22 ROBERTS T 3pt FG , jump shot missed
02:11				2 HARRIS N offensive rebound (8)
02:11	jump ball situation			
02:10				12 WILLIAMS J 2pt FG second chance outside the paint, jump shot missed
02:06				12 WILLIAMS J offensive rebound (4)
02:04				15 JUFFERMANS I 2pt FG second chance outside the paint, jump shot missed
02:04	defensive rebound (34)			
02:04	5 MILES O foul drawn (2)			12 WILLIAMS J foul personal (3 - 8)
02:04				12 WILLIAMS J substitution out
02:04				0 ARENAS I substitution in
02:04	5 MILES O free throw 1 - 2 made (6)	50-37	13	
02:04	5 MILES O free throw 2 - 2 made (7)	51-37	14	
01:50				0 ARENAS I 3pt FG , jump shot missed
01:48	11 CITRON S defensive rebound (4)			
01:43	5 MILES O foul drawn (3)			2 HARRIS N foul personal (4 - 9)
01:43				2 HARRIS N substitution out
01:43				15 JUFFERMANS I substitution out
01:43				4 RANDOLPH M substitution in
01:43				44 COCHRAN O substitution in
01:43	5 MILES O free throw 1 - 2 made (8)	52-37	15	
01:43	5 MILES O free throw 2 - 2 made (9)	53-37	16	
01:32	8 PROSPER C foul personal (1 - 2)			30 CURRY J foul drawn (1)
01:31	8 PROSPER C steal (2)			30 CURRY J turnover bad pass (1)
01:18	32 KARLEN L 2pt FG from turnover outside the paint, jump shot missed			
01:15	11 CITRON S offensive rebound (5)			
01:07	32 KARLEN L 2pt FG from turnover second chance in the paint, layup made (7)	55-37	18	
01:07	5 MILES O assist (2)			
00:58	13 KOVAL K foul shooting (3 - 3)			44 COCHRAN O foul drawn (5)
00:58		55-38	17	44 COCHRAN O free throw 1 - 2 made (7)
00:58				44 COCHRAN O free throw 2 - 2 missed
00:56	32 KARLEN L defensive rebound (3)			
00:44	13 KOVAL K turnover bad pass (3)			30 CURRY J steal (1)
00:33				22 ROBERTS T 2pt FG from turnover in the paint, floating jump shot missed
00:30	defensive rebound (38)			
00:30	13 KOVAL K substitution out			
00:30	21 WESTBELD M substitution in			



Official Basketball Play by Play - 3rd Period
Louisville at Notre Dame
 03/02/25 Purcell Pavilion at the Joyce Center, Notre Dame
 2024-25 Women's Basketball

Game Time: 12:00 PM
Game Duration: 2:00
Attendance: 8,852

Officials: Joseph Vaszily, Fatou Cissoko-Stephens, Rod Creech

Game Time	UND	Score	Diff	LOU
00:30				0 ARENAS I substitution out
00:30				2 HARRIS N substitution in
00:19	21 WESTBELD M turnover bad pass (2)			22 ROBERTS T steal (1)
00:11				22 ROBERTS T 3pt FG from turnover, jump shot missed
00:06				4 RANDOLPH M offensive rebound (1)
00:05		55-40	15	4 RANDOLPH M 2pt FG from turnover second chance in the paint, layup made (2)
00:00	5 MILES O 3pt FG , jump shot made (12)	58-40	18	
END OF PERIOD				
UND 58-40 LOU				



Officials: Joseph Vaszily, Fatou Cissoko-Stephens, Rod Creech

Louisville - 12

NO.	Name	F	Min	FG			Rebounds			Fouls		TP	AS	TO	ST	Blocks		+/-
				M-A	M-A	M-A	OR	DR	TOT	PF	FD					BS	BA	
2	Nyla Harris	F	08:47	0-1	0-0	0-0	2	2	4	4	0	0	0	1	0	0	0	-7
44	Olivia Cochran	F	08:06	0-2	0-0	2-4	0	1	1	2	2	2	0	2	0	1	1	-4
12	Ja'Leah Williams	G	07:56	0-4	0-0	0-0	2	0	2	1	0	0	1	0	0	0	1	-4
22	Tajianna Roberts	G	10:00	1-6	0-2	0-0	0	2	2	0	0	2	1	0	1	0	0	-10
30	Jayda Curry	G	10:00	2-3	2-3	0-0	0	1	1	2	1	6	0	1	1	0	1	-10
1	Imari Berry		00:00	0-0	0-0	0-0	0	0	0	0	0	0	0	0	0	0	0	0
15	Isla Juffermans		01:54	0-1	0-0	0-0	0	0	0	0	0	0	1	1	0	0	0	-6
0	Izela Arenas		01:34	0-1	0-1	0-0	0	0	0	0	0	0	0	0	0	0	0	-5
4	Mackently Randolph		01:43	1-1	0-0	0-0	1	0	1	0	0	2	0	0	0	0	0	-4
Team							1	1	2			0		0				
Totals				4-19	2-6	2-4	6	7	13	9	3	12	3	5	2	1	3	-10

Shooting By Period		
3rd FG%	4-19	21.1%
3PT%	2-6	33.3%
FT%	2-4	50%
GM FG%	4-19	21.1%
3PT%	2-6	33.3%
FT%	2-4	50.0%

Dead Ball Rebounds: 0, 0

Technical Fouls::NONE

Notre Dame - 22

NO.	Name	F	Min	FG			Rebounds			Fouls		TP	AS	TO	ST	Blocks		+/-
				M-A	M-A	M-A	OR	DR	TOT	PF	FD					BS	BA	
20	Liatu King	F	03:49	0-0	0-0	0-0	0	0	0	0	0	0	0	1	0	0	0	-4
21	Maddy Westbeld	F	04:19	0-2	0-2	0-0	0	0	0	0	1	0	0	1	0	0	0	-3
3	Hannah Hidalgo	G	06:59	0-2	0-0	3-4	1	1	2	0	2	3	1	0	0	0	0	2
5	Olivia Miles	G	08:58	1-2	1-1	6-6	0	2	2	0	3	9	1	1	0	0	0	10
11	Sonia Citron	G	09:20	0-1	0-0	1-2	1	2	3	1	1	1	1	0	0	1	0	8
13	Kate Koval		05:41	2-3	0-0	0-0	1	1	2	1	0	4	0	1	1	1	1	13
32	Liza Karlen		06:11	2-3	0-0	1-1	0	1	1	0	2	5	1	0	0	0	0	14
8	Cassandre Prosper		04:43	0-1	0-1	0-0	0	0	0	1	0	0	0	0	1	1	0	10
Team							0	4	4			0		0				
Totals				5-14	1-4	11-13	3	11	14	3	9	22	4	4	2	3	1	10

Shooting By Period		
3rd FG%	5-14	35.7%
3PT%	1-4	25.0%
FT%	11-13	84.6%
GM FG%	5-14	35.7%
3PT%	1-4	25.0%
FT%	11-13	84.6%

Dead Ball Rebounds: 1, 0

Technical Fouls::NONE

	LOU	UND
Biggest lead	0 (1 st 10:00)	18 (3 rd 1:07)
Best Scoring Run	6(3 rd 7:05)	10(3 rd 1:07)
Lead Changes	0	
Times Tied	0	
Time with Lead	00:00	09:10

Points from	LOU	UND
Turnovers	2	6
Paint	4	8
Second Chance	2	6
Fast Breaks	4	2
Bench	2	9

	Period by Period Scoring				
	1st	2nd	3rd	4th	TOT
LOU	15	13	12	19	59
UND	14	22	22	14	72



Period 4

Quarter Starters:

UND	3 Hidalgo H	5 Miles O	11 Citron S	20 King L	21 Westbeld M
LOU	2 Harris N	4 Randolph M	22 Roberts T	30 Curry J	44 Cochran O

Game Time	UND	Score	Diff	LOU
10:00	8 PROSPER C substitution out			
10:00	32 KARLEN L substitution out			
10:00	3 HIDALGO H substitution in			
10:00	20 KING L substitution in			
09:51	5 MILES O turnover bad pass (2)			
09:29				44 COCHRAN O 2pt FG from turnover in the paint, hook shot missed
09:26	5 MILES O defensive rebound (5)			
09:19	21 WESTBELD M 3pt FG , jump shot made (7)	61-40	21	
09:19	5 MILES O assist (3)			
09:01				22 ROBERTS T 2pt FG outside the paint, pull up jump shot missed
08:57				4 RANDOLPH M offensive rebound (2)
08:57				4 RANDOLPH M turnover travel (1)
08:57				Timeout 30 Sec
08:57				44 COCHRAN O substitution out
08:57				11 ISTANBULLUOGLU E substitution in
08:55	11 CITRON S foul drawn (4)			30 CURRY J foul personal (4 - 1)
08:53	3 HIDALGO H turnover travel (2)			
08:34		61-42	19	4 RANDOLPH M 2pt FG from turnover in the paint, turnaround jump shot made (4)
08:08	3 HIDALGO H 2pt FG in the paint, driving layup made (16)	63-42	21	
07:55	11 CITRON S foul shooting (3 - 1)			30 CURRY J foul drawn (2)
07:55		63-43	20	30 CURRY J free throw 1 - 3 made (18)
07:55		63-44	19	30 CURRY J free throw 2 - 3 made (19)
07:55				30 CURRY J free throw 3 - 3 missed
07:52	21 WESTBELD M defensive rebound (2)			
07:37	5 MILES O foul drawn (4)			11 ISTANBULLUOGLU E foul personal (1 - 2)
07:32	21 WESTBELD M 2pt FG outside the paint, turnaround jump shot made (9)	65-44	21	
07:22				22 ROBERTS T 2pt FG in the paint, turnaround jump shot blocked
07:22	20 KING L block (3)			
07:17	20 KING L defensive rebound (10)			
07:18	jump ball situation			
07:18	20 KING L turnover lost ball (2)			2 HARRIS N steal (1)
07:04				11 ISTANBULLUOGLU E 2pt FG from turnover in the paint, driving layup missed
07:01	21 WESTBELD M defensive rebound (3)			
06:56	11 CITRON S 3pt FG , jump shot missed			
06:53				22 ROBERTS T defensive rebound (3)
06:47				30 CURRY J 3pt FG , jump shot missed
06:44	20 KING L defensive rebound (11)			
06:26	5 MILES O 3pt FG , jump shot missed			
06:22				30 CURRY J defensive rebound (2)



Official Basketball Play by Play - 4th Period
Louisville at Notre Dame
 03/02/25 Purcell Pavilion at the Joyce Center, Notre Dame
 2024-25 Women's Basketball

Game Time: 12:00 PM
Game Duration: 2:00
Attendance: 8,852

Officials: Joseph Vaszily, Fatou Cissoko-Stephens, Rod Creech

Game Time	UND	Score	Diff	LOU
06:19				22 ROBERTS T 3pt FG , jump shot missed
06:17	defensive rebound (44)			
06:17	20 KING L substitution out			
06:17	21 WESTBELD M substitution out			
06:17	13 KOVAL K substitution in			
06:17	32 KARLEN L substitution in			
06:17				4 RANDOLPH M substitution out
06:17				22 ROBERTS T substitution out
06:17				30 CURRY J substitution out
06:17				0 ARENAS I substitution in
06:17				1 BERRY I substitution in
06:17				13 RUSSELL M substitution in
05:57	11 CITRON S foul drawn (5)			11 ISTANBULLUOGLU E foul personal (2 - 3)
05:46	Timeout 30 Sec			
05:46				2 HARRIS N substitution out
05:46				12 WILLIAMS J substitution in
05:43	3 HIDALGO H turnover (3)			
05:34				1 BERRY I 3pt FG from turnover, jump shot missed
05:30				12 WILLIAMS J offensive rebound (5)
05:22		65-46	19	11 ISTANBULLUOGLU E 2pt FG from turnover second chance outside the paint, jump shot made (2)
05:22				0 ARENAS I assist (1)
05:12	3 HIDALGO H 2pt FG in the paint, floating jump shot missed			
05:08				13 RUSSELL M defensive rebound (1)
05:04		65-48	17	12 WILLIAMS J 2pt FG fast break in the paint, driving layup made (4)
05:04	32 KARLEN L foul shooting (2 - 2)			12 WILLIAMS J foul drawn (2)
05:04				12 WILLIAMS J free throw fast break 1 - 1 missed
05:02	32 KARLEN L defensive rebound (4)			
05:00	32 KARLEN L turnover lost ball (1)			12 WILLIAMS J steal (2)
04:55				1 BERRY I 2pt FG from turnover in the paint, driving layup missed
04:52	32 KARLEN L defensive rebound (5)			
04:48	13 KOVAL K substitution out			
04:48	32 KARLEN L substitution out			
04:48	20 KING L substitution in			
04:48	21 WESTBELD M substitution in			
04:43	21 WESTBELD M turnover bad pass (3)			
04:31				13 RUSSELL M turnover bad pass (1)
04:09	3 HIDALGO H foul drawn (4)			1 BERRY I foul shooting (2 - 4)
04:09	3 HIDALGO H free throw 1 - 2 missed			
04:09	offensive dead ball rebound (3)			
04:09	3 HIDALGO H free throw 2 - 2 made (17)	66-48	18	
04:09				13 RUSSELL M substitution out
04:09				15 JUFFERMANS I substitution in
03:57				1 BERRY I 2pt FG outside the paint, floating jump shot missed
03:53				11 ISTANBULLUOGLU E offensive rebound (4)
03:50				1 BERRY I 2pt FG second chance outside the paint, jump shot missed
03:49				11 ISTANBULLUOGLU E offensive rebound (5)



Official Basketball Play by Play - 4th Period
Louisville at Notre Dame
 03/02/25 Purcell Pavilion at the Joyce Center, Notre Dame
 2024-25 Women's Basketball

Game Time: 12:00 PM
Game Duration: 2:00
Attendance: 8,852

Officials: Joseph Vaszily, Fatou Cissoko-Stephens, Rod Creech

Game Time	UND	Score	Diff	LOU
03:49	11 CITRON S foul personal (4 - 3)			11 ISTANBULLUOGLU E foul drawn (2)
03:49	11 CITRON S substitution out			
03:49	8 PROSPER C substitution in			
03:44		66-50	16	12 WILLIAMS J 2pt FG second chance in the paint, driving layup made (6)
03:26	20 KING L turnover travel (3)			
03:26	20 KING L substitution out			
03:26	13 KOVAL K substitution in			
03:09				0 ARENAS I 2pt FG from turnover outside the paint, pull up jump shot missed
03:07				15 JUFFERMANS I offensive rebound (1)
03:07	21 WESTBELD M foul personal (3 - 4)			15 JUFFERMANS I foul drawn (1)
02:54		66-52	14	15 JUFFERMANS I 2pt FG from turnover second chance in the paint, hook shot made (2)
02:54				0 ARENAS I assist (2)
02:26	5 MILES O 3pt FG , jump shot made (15)	69-52	17	
02:26	3 HIDALGO H assist (6)			
02:11				12 WILLIAMS J 2pt FG in the paint, pull up jump shot missed
02:07	3 HIDALGO H defensive rebound (8)			
01:45	21 WESTBELD M 2pt FG in the paint, layup missed			
01:43	3 HIDALGO H offensive rebound (9)			
01:43	jump ball situation			
01:25	3 HIDALGO H 3pt FG second chance, step back jump shot made (20)	72-52	20	
01:15		72-54	18	1 BERRY I 2pt FG outside the paint, floating jump shot made (2)
00:53				12 WILLIAMS J substitution out
00:53				4 RANDOLPH M substitution in
00:52	8 PROSPER C turnover bad pass (2)			1 BERRY I steal (1)
00:47		72-56	16	0 ARENAS I 2pt FG fast break from turnover in the paint, driving layup made (2)
00:47				11 ISTANBULLUOGLU E assist (1)
00:19	3 HIDALGO H turnover lost ball (4)			15 JUFFERMANS I steal (1)
00:10				15 JUFFERMANS I 2pt FG from turnover outside the paint, jump shot missed
00:07				offensive rebound (40)
00:06				Timeout 30 Sec
00:06	3 HIDALGO H substitution out			
00:06	5 MILES O substitution out			
00:06	21 WESTBELD M substitution out			
00:06	10 TEHRANI B substitution in			
00:06	15 JENSEN L substitution in			
00:06	25 CERNUGEL S substitution in			
00:06				Timeout 60 Sec
00:03		72-59	13	0 ARENAS I 3pt FG from turnover second chance, jump shot made (5)
00:03				4 RANDOLPH M assist (1)
END OF GAME				
UND 72-59 LOU				



Officials: Joseph Vaszily, Fatou Cissoko-Stephens, Rod Creech

Louisville - 19

NO.	Name	F	Min	FG			Rebounds			Fouls		TP	AS	TO	ST	Blocks		+/-
				M-A	M-A	M-A	OR	DR	TOT	PF	FD					BS	BA	
2	Nyla Harris	F	04:14	0-0	0-0	0-0	0	0	0	0	0	0	0	1	0	0	-3	
44	Olivia Cochran	F	01:03	0-1	0-0	0-0	0	0	0	0	0	0	0	0	0	0	-3	
12	Ja'Leah Williams	G	04:53	2-3	0-0	0-1	1	0	1	0	1	4	0	0	1	0	3	
22	Tajianna Roberts	G	03:43	0-3	0-1	0-0	0	1	1	0	0	0	0	0	0	1	-3	
30	Jayda Curry	G	03:43	0-1	0-1	2-3	0	1	1	1	1	2	0	0	0	0	-3	
11	Elif Istanbuluoglu		08:57	1-2	0-0	0-0	2	0	2	2	1	2	1	0	0	0	8	
0	Izela Arenas		06:17	2-3	1-1	0-0	0	0	0	0	0	5	2	0	0	0	8	
1	Imari Berry		06:17	1-5	0-1	0-0	0	0	0	1	0	2	0	0	1	0	8	
13	Merissah Russell		02:08	0-0	0-0	0-0	0	1	1	0	0	0	0	1	0	0	3	
15	Isla Juffermans		04:09	1-2	0-0	0-0	1	0	1	0	1	2	0	0	1	0	5	
4	Mackeny Randolph		04:36	1-1	0-0	0-0	1	0	1	0	0	2	1	1	0	0	2	
Team							1	0	1			0		0				
Totals				8-21	1-4	2-4	6	3	9	4	4	19	4	2	4	0	1	5

Shooting By Period		
4 th FG%	8-21	38.1%
3PT%	1-4	25.0%
FT%	2-4	50%
GM FG%	8-21	38.1%
3PT%	1-4	25.0%
FT%	2-4	50.0%

Dead Ball Rebounds: 0, 0

Technical Fouls::NONE

Notre Dame - 14

NO.	Name	F	Min	FG			Rebounds			Fouls		TP	AS	TO	ST	Blocks		+/-
				M-A	M-A	M-A	OR	DR	TOT	PF	FD					BS	BA	
20	Liatu King	F	05:05	0-0	0-0	0-0	0	2	2	0	0	0	0	2	0	1	0	2
21	Maddy Westbeld	F	08:25	2-3	1-1	0-0	0	2	2	1	0	5	0	1	0	0	0	2
3	Hannah Hidalgo	G	09:54	2-3	1-1	1-2	1	1	2	0	1	6	1	3	0	0	0	-2
5	Olivia Miles	G	09:54	1-2	1-2	0-0	0	1	1	0	1	3	1	1	0	0	0	-2
11	Sonia Citron	G	06:11	0-1	0-1	0-0	0	0	0	2	2	0	0	0	0	0	0	0
13	Kate Koval		04:55	0-0	0-0	0-0	0	0	0	0	0	0	0	0	0	0	0	-7
32	Liza Karlen		01:29	0-0	0-0	0-0	0	2	2	1	0	0	0	1	0	0	0	-4
8	Cassandre Prosper		03:49	0-0	0-0	0-0	0	0	0	0	0	0	0	1	0	0	0	-5
10	Bella Tehrani		00:06	0-0	0-0	0-0	0	0	0	0	0	0	0	0	0	0	0	-3
15	Luci Jensen		00:06	0-0	0-0	0-0	0	0	0	0	0	0	0	0	0	0	0	-3
25	Sarah Cernugel		00:06	0-0	0-0	0-0	0	0	0	0	0	0	0	0	0	0	0	-3
Team							0	1	1			0		0				
Totals				5-9	3-5	1-2	1	9	10	4	4	14	2	9	0	1	0	-5

Shooting By Period		
4 th FG%	5-9	55.6%
3PT%	3-5	60.0%
FT%	1-2	50%
GM FG%	5-9	55.6%
3PT%	3-5	60.0%
FT%	1-2	50.0%

Dead Ball Rebounds: 1, 0

Technical Fouls::NONE

	LOU	UND
Biggest lead	0 (1 st 10:00)	21 (4 th 9:19)
Best Scoring Run	7(4 th 0:03)	6(4 th 1:25)
Lead Changes	0	
Times Tied	0	
Time with Lead	00:00	09:29

	LOU	UND
Points from		
Turnovers	11	1
Paint	10	2
Second Chance	9	3
Fast Breaks	4	0
Bench	13	0

Period by Period Scoring					
	1st	2nd	3rd	4th	TOT
LOU	15	13	12	19	59
UND	14	22	22	14	72



Officials: Joseph Vaszily, Fatou Cissoko-Stephens, Rod Creech

Louisville - 31

NO.	Name	F	Min	FG			3P			FT			Rebounds			Fouls		TP	AS	TO	ST	Blocks		+/-
				M-A	M-A	M-A	OR	DR	TOT	PF	FD	BS	BA											
2	Nyla Harris	F	13:01	0-1	0-0	0-0	2	2	4	4	0	0	0	0	0	1	1	0	0	0	0	-10		
44	Olivia Cochran	F	09:09	0-3	0-0	2-4	0	1	1	2	2	2	0	2	2	0	2	0	1	1	-7			
12	Ja'Leah Williams	G	12:49	2-7	0-0	0-1	3	0	3	1	1	4	1	0	1	0	1	0	1	-1				
22	Tajianna Roberts	G	13:43	1-9	0-3	0-0	0	3	3	0	0	2	1	0	1	0	1	0	1	-13				
30	Jayda Curry	G	13:43	2-4	2-4	2-3	0	2	2	3	2	8	0	1	1	1	0	1	-13					
15	Isla Juffermans		06:03	1-3	0-0	0-0	1	0	1	0	1	2	1	1	1	1	0	0	-1					
0	Izela Arenas		07:51	2-4	1-2	0-0	0	0	0	0	0	5	2	0	0	0	0	0	3					
4	Mackently Randolph		06:19	2-2	0-0	0-0	2	0	2	0	0	4	1	1	0	0	0	0	-2					
11	Elif Istanbuluoglu		08:57	1-2	0-0	0-0	2	0	2	2	1	2	1	0	0	0	0	0	8					
1	Imari Berry		06:17	1-5	0-1	0-0	0	0	0	1	0	2	0	0	1	0	0	0	8					
13	Merissah Russell		02:08	0-0	0-0	0-0	0	1	1	0	0	0	0	1	0	0	0	0	3					
Team							2	1	3			0		0										
Totals				12-40	3-10	4-8	12	10	22	13	7	31	7	7	6	1	4			-5				

Shooting By Period		
3 rd FG%	4-19	21.1%
3PT%	2-6	33.3%
FT%	2-4	50%
4 th FG%	8-21	38.1%
3PT%	1-4	25.0%
FT%	2-4	50%
GM FG%	12-40	30.0%
3PT%	3-10	30.0%
FT%	4-8	50.0%

Dead Ball Rebounds: 0, 0

Technical Fouls::NONE

Notre Dame - 36

NO.	Name	F	Min	FG			3P			FT			Rebounds			Fouls		TP	AS	TO	ST	Blocks		+/-
				M-A	M-A	M-A	OR	DR	TOT	PF	FD	BS	BA											
20	Liatu King	F	08:54	0-0	0-0	0-0	0	2	2	0	0	0	0	0	3	0	1	0	-2					
21	Maddy Westbeld	F	12:44	2-5	1-3	0-0	0	2	2	1	1	5	0	2	0	0	0	-1						
3	Hannah Hidalgo	G	16:53	2-5	1-1	4-6	2	2	4	0	3	9	2	3	0	0	0	0						
5	Olivia Miles	G	18:52	2-4	2-3	6-6	0	3	3	0	4	12	2	2	0	0	0	8						
11	Sonia Citron	G	15:31	0-2	0-1	1-2	1	2	3	3	3	1	1	0	0	1	0	8						
13	Kate Koval		10:36	2-3	0-0	0-0	1	1	2	1	0	4	0	1	1	1	1	6						
32	Liza Karlen		07:40	2-3	0-0	1-1	0	3	3	1	2	5	1	1	0	0	0	10						
8	Cassandre Prosper		08:32	0-1	0-1	0-0	0	0	0	1	0	0	0	1	1	1	0	5						
10	Bella Tehrani		00:06	0-0	0-0	0-0	0	0	0	0	0	0	0	0	0	0	0	-3						
15	Luci Jensen		00:06	0-0	0-0	0-0	0	0	0	0	0	0	0	0	0	0	0	-3						
25	Sarah Cernugel		00:06	0-0	0-0	0-0	0	0	0	0	0	0	0	0	0	0	0	-3						
Team							0	5	5			0		0										
Totals				10-23	4-9	12-15	4	20	24	7	13	36	6	13	2	4	1	5						

Shooting By Period		
3 rd FG%	5-14	35.7%
3PT%	1-4	25.0%
FT%	11-13	84.6%
4 th FG%	5-9	55.6%
3PT%	3-5	60.0%
FT%	1-2	50%
GM FG%	10-23	43.5%
3PT%	4-9	44.4%
FT%	12-15	80.0%

Dead Ball Rebounds: 2, 0

Technical Fouls::NONE

	LOU	UND
Biggest lead	0 (1 st 10:00)	21 (4 th 9:19)
Best Scoring Run	7(4 th 0:03)	10(3 rd 1:07)
Lead Changes	0	
Times Tied	0	
Time with Lead	00:00	19:10

Points from	LOU	UND
Turnovers	13	7
Paint	14	10
Second Chance	11	9
Fast Breaks	8	2
Bench	15	9

Period by Period Scoring					
	1st	2nd	3rd	4th	TOT
LOU	15	13	12	19	59
UND	14	22	22	14	72



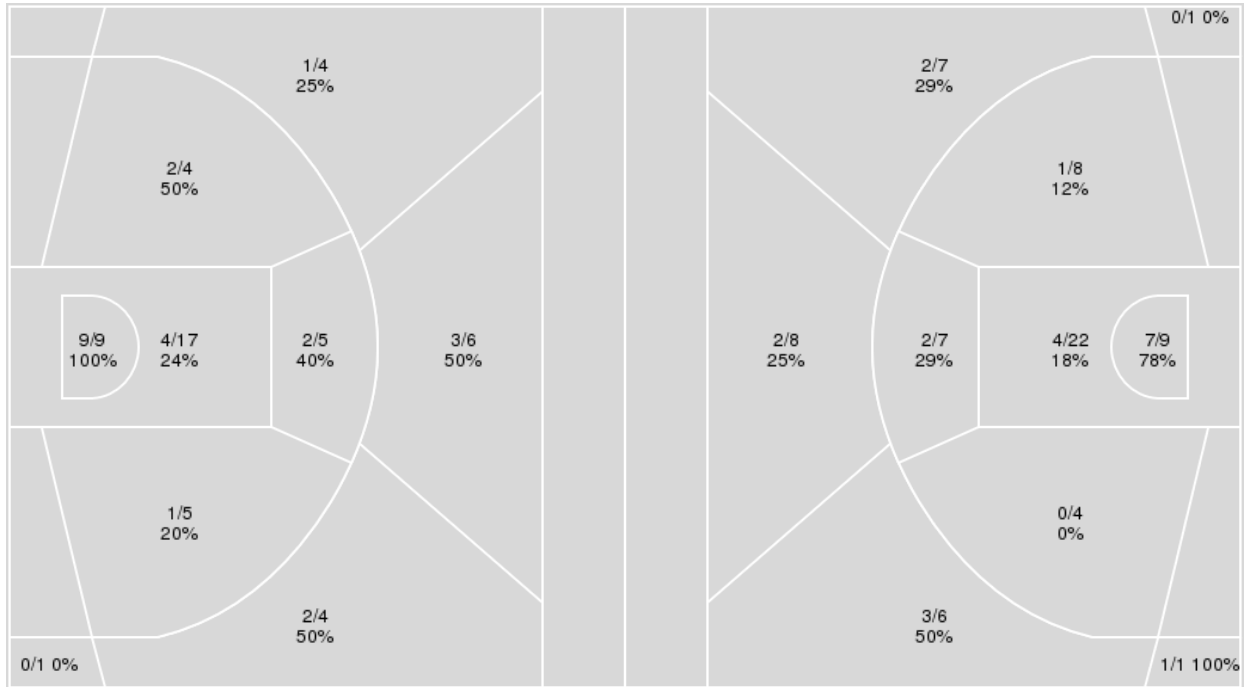
Officials: Joseph Vaszily, Fatou Cissoko-Stephens, Rod Creech

{ Players => 2, 3, 5, 8, 10, 11, 13, 14, 15, 20, 21, 22, 25, 32; } FG
 Types => All; Results => All;

{ Players => 0, 1, 2, 4, 5, 9, 10, 11, 12, 13, 15, 21, 22, 30, 44; } FG
 Types => All; Results => All;

Notre Dame

Louisville



Notre Dame	M/A	%
Field Goals	24/55	44
2 Points	18/40	45
3 Points	6/15	40
Free Throws	18/23	78

Louisville	M/A	%
Field Goals	22/73	30
2 Points	14/50	28
3 Points	8/23	35
Free Throws	7/12	58



Louisville at Notre Dame

03/02/25 Purcell Pavilion at the Joyce Center, Notre Dame
2024-25 Women's Basketball

Game Time: 12:00 PM
Game Duration: 2:00
Attendance: 8,852

Officials: Joseph Vaszily, Fatou Cissoko-Stephens, Rod Creech

Louisville

No	Name	Mins		Score		Points Diff		Points per Min		Assists		Rebounds		Steals		Turnovers	
		On	Off	On	Off	On	Off	On	Off	On	Off	On	Off	On	Off	On	Off
0	Izela Arenas	11:27	28:33	21 - 21	38 - 51	0	-13	1.83	1.33	5	5	7	33	4	3	4	12
1	Imari Berry	14:02	25:58	25 - 20	34 - 52	5	-18	1.78	1.31	5	5	17	23	3	4	5	11
2	Nyla Harris	23:20	16:40	24 - 38	35 - 34	-14	1	1.03	2.10	5	5	28	12	3	4	11	5
4	Mackenly Randolph	10:51	29:09	20 - 22	39 - 50	-2	-11	1.84	1.34	2	8	8	32	5	2	3	13
9	Anaya Hardy	01:14	38:46	0 - 2	59 - 70	-2	-11	0.00	1.52	0	10	1	39	0	7	1	15
11	Elif Istanbuluoglu	20:42	19:18	38 - 32	21 - 40	6	-19	1.84	1.09	5	5	17	23	4	3	6	10
12	Ja'Leah Williams	22:54	17:06	34 - 36	25 - 36	-2	-11	1.48	1.46	7	3	30	10	2	5	9	7
13	Merissah Russell	09:47	30:13	17 - 21	42 - 51	-4	-9	1.74	1.39	2	8	6	34	1	6	3	13
15	Isla Juffermans	06:03	33:57	13 - 14	46 - 58	-1	-12	2.15	1.35	4	6	7	33	2	5	1	15
22	Tajianna Roberts	25:13	14:47	26 - 45	33 - 27	-19	6	1.03	2.23	5	5	27	13	4	3	13	3
30	Jayda Curry	28:35	11:25	39 - 56	20 - 16	-17	4	1.36	1.75	5	5	27	13	4	3	13	3
44	Olivia Cochran	25:51	14:09	38 - 53	21 - 19	-15	2	1.47	1.48	5	5	25	15	3	4	11	5

Notre Dame

No	Name	Mins		Score		Points Diff		Points per Min		Assists		Rebounds		Steals		Turnovers	
		On	Off	On	Off	On	Off	On	Off	On	Off	On	Off	On	Off	On	Off
3	Hannah Hidalgo	33:52	06:08	59 - 53	13 - 6	6	7	1.74	2.12	12	2	39	9	2	4	16	3
5	Olivia Miles	37:51	02:09	70 - 53	2 - 6	17	-4	1.85	0.93	14	0	47	1	6	0	18	1
8	Cassandra Prosper	14:43	25:17	28 - 22	44 - 37	6	7	1.90	1.74	4	10	14	34	4	2	7	12
10	Bella Tehrani	00:06	39:54	0 - 3	72 - 56	-3	16	0.00	1.80	0	14	0	48	0	6	0	19
11	Sonia Citron	33:52	06:08	59 - 43	13 - 16	16	-3	1.74	2.12	12	2	44	4	6	0	16	3
13	Kate Koval	15:28	24:32	31 - 27	41 - 32	4	9	2.00	1.67	6	8	18	30	2	4	8	11
15	Luci Jensen	00:06	39:54	0 - 3	72 - 56	-3	16	0.00	1.80	0	14	0	48	0	6	0	19
20	Liatu King	24:47	15:13	38 - 30	34 - 29	8	5	1.53	2.23	8	6	33	15	4	2	11	8
21	Maddy Westbeld	21:31	18:29	34 - 35	38 - 24	-1	14	1.58	2.06	7	7	21	27	1	5	13	6
25	Sarah Cernugel	00:06	39:54	0 - 3	72 - 56	-3	16	0.00	1.80	0	14	0	48	0	6	0	19
32	Liza Karlen	17:38	22:22	41 - 23	31 - 36	18	-5	2.33	1.39	7	7	24	24	5	1	6	13

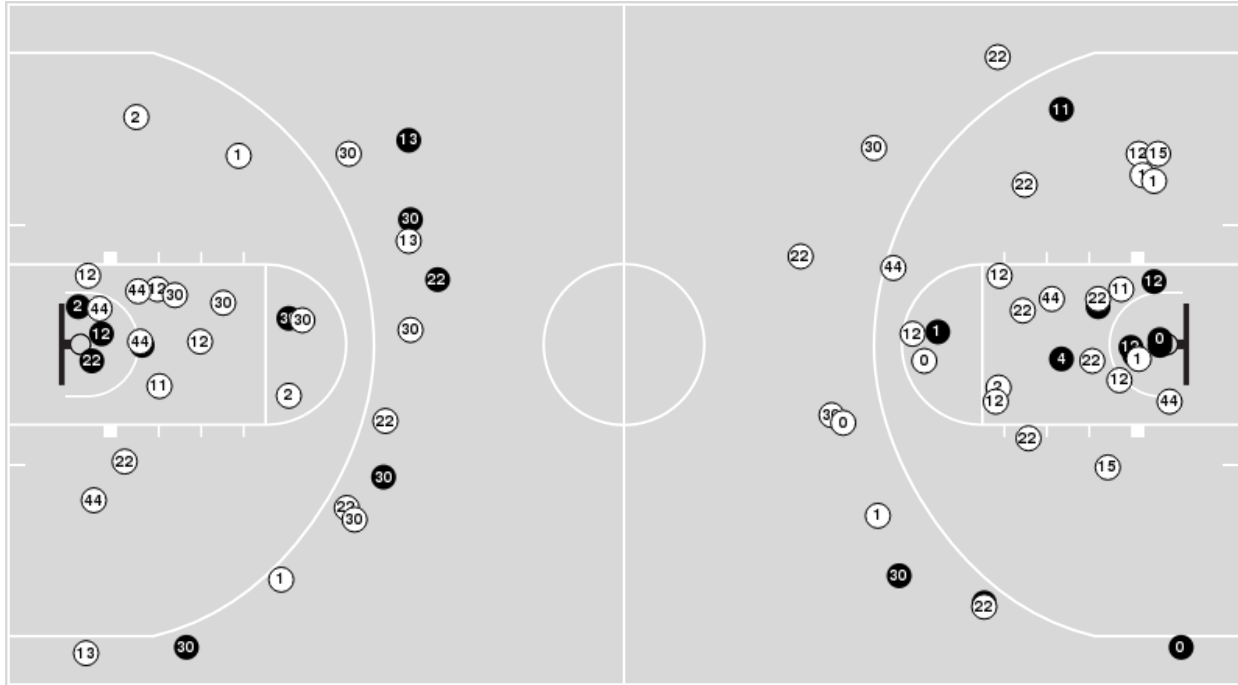


Officials: Joseph Vaszily, Fatou Cissoko-Stephens, Rod Creech

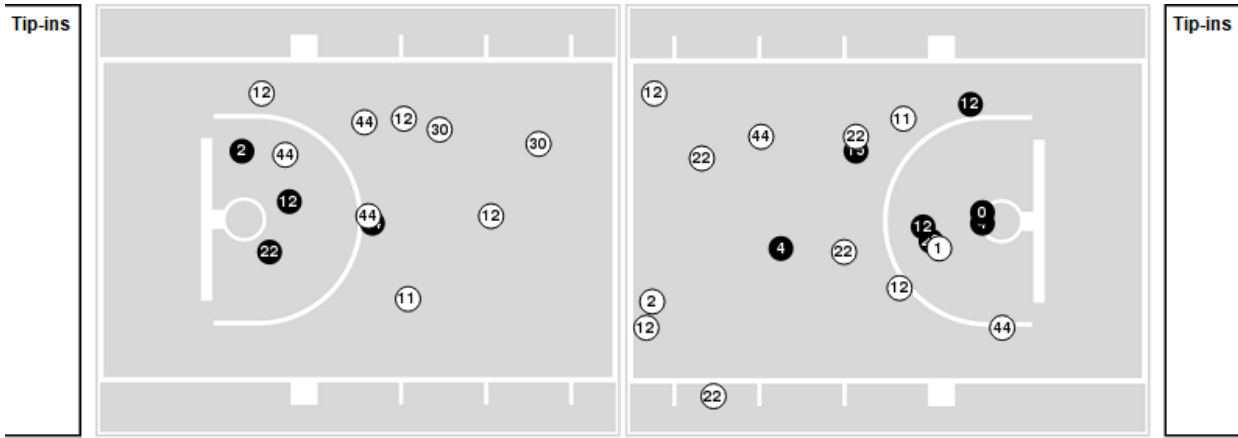
Players => 0, 1, 2, 4, 5, 9, 10, 11, 12, 13, 15, 21, 22, 30, 44 FG Types=>All Results=>All

Louisville

All Field Goals



Blow Up Chart



● Made ○ Missed N - Player Number

Louisville	M/A	%
Field Goals	22/73	30
2 Points	14/50	28
3 Points	8/23	35
Free Throws	7/12	58

Louisville	M/A	%
Points in the Paint	22 (11 / 31)	35
Fast Break Points	13 (6/8)	75
Second Chance Points	15 (7/17)	41
Effective FG%	36	

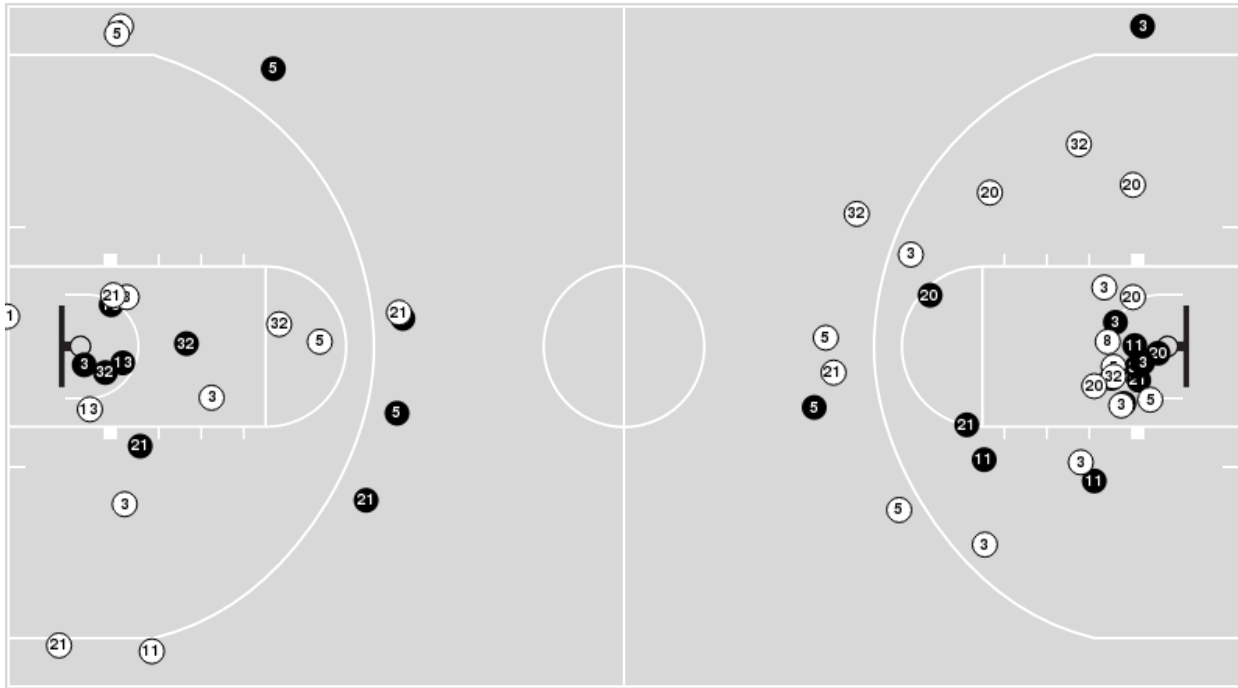


Officials: Joseph Vaszily, Fatou Cissoko-Stephens, Rod Creech

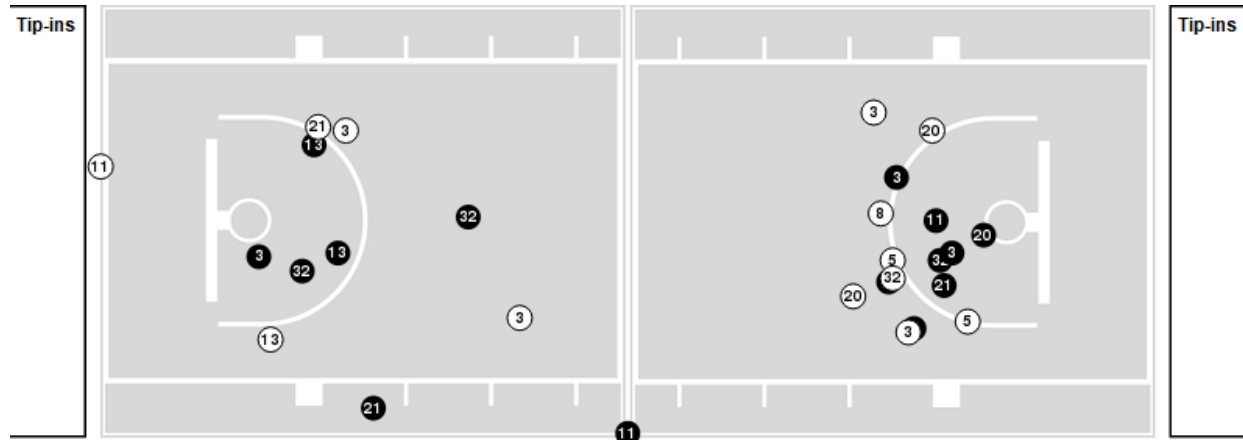
Players => 2, 3, 5, 8, 10, 11, 13, 14, 15, 20, 21, 22, 25, 32FG Types=>AllResults=>All

Notre Dame

All Field Goals



Blow Up Chart



● Made ○ Missed N - Player Number

Notre Dame	M/A	%
Field Goals	24/55	44
2 Points	18/40	45
3 Points	6/15	40
Free Throws	18/23	78

Notre Dame	M/A	%
Points in the Paint	26 (13 / 26)	50
Fast Break Points	8 (5/7)	71
Second Chance Points	21 (13/17)	76
Effective FG%	49	



Officials: Joseph Vaszily, Fatou Cissoko-Stephens, Rod Creech

Louisville

Lineup	Quarter On	Time On	Quarter Off	Time Off	Time on Court	Score	Score Diff	Reb	Stl	Tov	Ass	PPP
2- Harris N/ 12- Williams J/ 22- Roberts T/ 30- Curry J/ 44- Cochran O/	1	10:00	1	07:20	02:40	5-5	0	2	1	1	1	1.0000
1- Berry I/ 2- Harris N/ 12- Williams J/ 22- Roberts T/ 44- Cochran O/	1	07:20	1	04:51	02:29	4-4	0	4	0	0	1	1.0000
1- Berry I/ 11- Istanbuluoglu E/ 12- Williams J/ 22- Roberts T/ 44- Cochran O/	1	04:51	1	03:43	01:08	1-3	-2	1	0	1	0	0.5319
1- Berry I/ 11- Istanbuluoglu E/ 12- Williams J/ 30- Curry J/ 44- Cochran O/	1	03:43	1	02:32	01:11	5-2	3	3	0	0	0	2.5000
1- Berry I/ 2- Harris N/ 11- Istanbuluoglu E/ 12- Williams J/ 30- Curry J/	1	02:32	1	02:32	00:00	0-0	0	0	0	0	0	0.0000
1- Berry I/ 2- Harris N/ 11- Istanbuluoglu E/ 22- Roberts T/ 30- Curry J/	1	02:32	1	01:10	01:22	0-0	0	2	0	1	0	0.0000
2- Harris N/ 11- Istanbuluoglu E/ 12- Williams J/ 22- Roberts T/ 30- Curry J/	1	01:10	1	00:03	01:06	0-0	0	1	0	1	0	0.0000
0- Arenas I/ 2- Harris N/ 11- Istanbuluoglu E/ 22- Roberts T/ 30- Curry J/	1	00:03	2	09:14	00:49	0-0	0	1	0	1	0	0.0000
0- Arenas I/ 11- Istanbuluoglu E/ 22- Roberts T/ 30- Curry J/ 44- Cochran O/	2	09:14	2	08:03	01:11	0-2	-2	0	0	1	0	0.0000
0- Arenas I/ 11- Istanbuluoglu E/ 13- Russell M/ 30- Curry J/ 44- Cochran O/	2	08:03	2	06:27	01:36	5-6	-1	0	0	0	1	1.6667
1- Berry I/ 2- Harris N/ 13- Russell M/ 30- Curry J/ 44- Cochran O/	2	06:27	2	05:16	01:11	0-4	-4	1	0	1	0	0.0000
4- Randolph M/ 11- Istanbuluoglu E/ 13- Russell M/ 30- Curry J/ 44- Cochran O/	2	05:16	2	01:55	03:21	8-8	0	1	0	0	0	1.1628
4- Randolph M/ 9- Hardy A/ 12- Williams J/ 13- Russell M/ 44- Cochran O/	2	01:55	2	01:25	00:30	0-0	0	1	0	0	0	0.0000
9- Hardy A/ 12- Williams J/ 13- Russell M/ 22- Roberts T/ 44- Cochran O/	2	01:25	2	00:40	00:44	0-2	-2	0	0	1	0	0.0000
2- Harris N/ 4- Randolph M/ 12- Williams J/ 22- Roberts T/ 44- Cochran O/	2	00:40	2	00:40	00:00	0-0	0	0	0	0	0	0.0000
2- Harris N/ 4- Randolph M/ 12- Williams J/ 13- Russell M/ 44- Cochran O/	2	00:40	2	00:24	00:16	0-0	0	1	0	0	0	0.0000
1- Berry I/ 2- Harris N/ 4- Randolph M/ 30- Curry J/ 44- Cochran O/	2	00:24	3	10:00	00:24	0-0	0	0	0	1	0	0.0000
2- Harris N/ 12- Williams J/ 22- Roberts T/ 30- Curry J/ 44- Cochran O/	3	10:00	3	03:37	06:23	7-7	0	9	0	3	2	0.6434
2- Harris N/ 12- Williams J/ 15- Juffermans I/ 22- Roberts T/ 30- Curry J/	3	03:37	3	02:04	01:33	2-6	-4	3	0	1	1	0.5000
0- Arenas I/ 2- Harris N/ 15- Juffermans I/ 22- Roberts T/ 30- Curry J/	3	02:04	3	01:43	00:21	0-2	-2	0	0	0	0	0.0000
0- Arenas I/ 4- Randolph M/ 22- Roberts T/ 30- Curry J/ 44- Cochran O/	3	01:43	3	00:30	01:13	1-4	-3	0	1	1	0	0.3472
2- Harris N/ 4- Randolph M/ 22- Roberts T/ 30- Curry J/ 44- Cochran O/	3	00:30	4	08:57	01:33	2-6	-4	2	1	1	0	0.6667
2- Harris N/ 4- Randolph M/ 11- Istanbuluoglu E/ 22- Roberts T/ 30- Curry J/	4	08:57	4	06:17	02:40	4-4	0	2	1	0	0	0.6329
0- Arenas I/ 1- Berry I/ 2- Harris N/ 11- Istanbuluoglu E/ 13- Russell M/	4	06:17	4	05:46	00:31	0-0	0	0	0	0	0	0.0000
0- Arenas I/ 1- Berry I/ 11- Istanbuluoglu E/ 12- Williams J/ 13- Russell M/	4	05:46	4	04:09	01:37	4-1	3	2	1	1	1	0.9009
0- Arenas I/ 1- Berry I/ 11- Istanbuluoglu E/ 12- Williams J/ 15- Juffermans I/	4	04:09	4	00:53	03:15	6-6	0	3	0	0	1	1.5000
0- Arenas I/ 1- Berry I/ 4- Randolph M/ 11- Istanbuluoglu E/ 15- Juffermans I/	4	00:53	4	00:00	00:53	5-0	5	1	2	0	2	2.5000



Official Basketball Rotations Summary - Final
Louisville at Notre Dame
 03/02/25 Purcell Pavilion at the Joyce Center, Notre Dame
 2024-25 Women's Basketball

Game Time: 12:00 PM
Game Duration: 2:00
Attendance: 8,852

Officials: Joseph Vaszily, Fatou Cissoko-Stephens, Rod Creech

Notre Dame

Lineup	Quarter On	Time On	Quarter Off	Time Off	Time on Court	Score	Score Diff	Reb	Stl	Tov	Ass	PPP
3- Hidalgo H/ 5- Miles O/ 11- Citron S/ 20- King L/ 21- Westbeld M/	1	10:00	1	04:51	05:09	9-9	0	4	1	1	3	1.0000
3- Hidalgo H/ 5- Miles O/ 8- Prosper C/ 20- King L/ 32- Karlen L/	1	04:51	1	03:43	01:08	3-1	2	1	0	0	1	3.0000
3- Hidalgo H/ 5- Miles O/ 8- Prosper C/ 13- Koval K/ 32- Karlen L/	1	03:43	1	03:12	00:31	0-2	-2	0	0	0	0	0.0000
3- Hidalgo H/ 8- Prosper C/ 11- Citron S/ 13- Koval K/ 32- Karlen L/	1	03:12	1	03:02	00:10	2-0	2	0	0	0	0	2.2727
3- Hidalgo H/ 8- Prosper C/ 11- Citron S/ 13- Koval K/ 21- Westbeld M/	1	03:02	1	02:11	00:51	0-3	-3	0	0	1	0	0.0000
3- Hidalgo H/ 5- Miles O/ 11- Citron S/ 13- Koval K/ 20- King L/	1	02:11	1	01:26	00:45	0-0	0	3	0	1	0	0.0000
5- Miles O/ 8- Prosper C/ 11- Citron S/ 20- King L/ 32- Karlen L/	1	01:26	2	08:25	03:01	2-0	2	4	3	1	0	0.5000
3- Hidalgo H/ 5- Miles O/ 11- Citron S/ 20- King L/ 32- Karlen L/	2	08:25	2	07:03	01:22	4-5	-1	3	0	0	1	2.0000
3- Hidalgo H/ 5- Miles O/ 11- Citron S/ 13- Koval K/ 32- Karlen L/	2	07:03	2	04:28	02:35	6-5	1	2	0	1	1	1.2605
3- Hidalgo H/ 5- Miles O/ 11- Citron S/ 20- King L/ 32- Karlen L/	2	04:28	2	03:17	01:11	4-0	4	3	0	0	0	2.0000
3- Hidalgo H/ 5- Miles O/ 11- Citron S/ 20- King L/ 21- Westbeld M/	2	03:17	2	01:55	01:22	4-3	1	2	0	1	1	1.3333
3- Hidalgo H/ 5- Miles O/ 8- Prosper C/ 11- Citron S/ 20- King L/	2	01:55	2	01:25	00:30	0-0	0	0	0	0	0	0.0000
3- Hidalgo H/ 5- Miles O/ 11- Citron S/ 20- King L/ 21- Westbeld M/	2	01:25	3	06:11	05:14	4-6	-2	7	0	2	1	0.4630
3- Hidalgo H/ 5- Miles O/ 11- Citron S/ 13- Koval K/ 32- Karlen L/	3	06:11	3	05:43	00:28	2-0	2	0	0	0	1	2.0000
3- Hidalgo H/ 8- Prosper C/ 11- Citron S/ 13- Koval K/ 32- Karlen L/	3	05:43	3	04:41	01:02	0-0	0	1	0	0	0	0.0000
3- Hidalgo H/ 5- Miles O/ 11- Citron S/ 13- Koval K/ 32- Karlen L/	3	04:41	3	03:41	01:00	3-1	2	2	1	0	1	2.0833
3- Hidalgo H/ 5- Miles O/ 8- Prosper C/ 13- Koval K/ 32- Karlen L/	3	03:41	3	03:01	00:40	4-2	2	1	0	0	0	1.4493
5- Miles O/ 8- Prosper C/ 11- Citron S/ 13- Koval K/ 32- Karlen L/	3	03:01	3	00:30	02:31	8-1	7	5	1	1	2	1.6807
5- Miles O/ 8- Prosper C/ 11- Citron S/ 21- Westbeld M/ 32- Karlen L/	3	00:30	4	10:00	00:30	3-2	1	0	0	1	0	1.5000
3- Hidalgo H/ 5- Miles O/ 11- Citron S/ 20- King L/ 21- Westbeld M/	4	10:00	4	06:17	03:43	7-4	3	6	0	3	1	0.8750
3- Hidalgo H/ 5- Miles O/ 11- Citron S/ 13- Koval K/ 32- Karlen L/	4	06:17	4	04:48	01:29	0-4	-4	2	0	2	0	0.0000
3- Hidalgo H/ 5- Miles O/ 11- Citron S/ 20- King L/ 21- Westbeld M/	4	04:48	4	03:49	00:59	1-0	1	0	0	1	0	0.5319
3- Hidalgo H/ 5- Miles O/ 8- Prosper C/ 20- King L/ 21- Westbeld M/	4	03:49	4	03:26	00:23	0-2	-2	0	0	1	0	0.0000
3- Hidalgo H/ 5- Miles O/ 8- Prosper C/ 13- Koval K/ 21- Westbeld M/	4	03:26	4	00:06	03:19	6-6	0	2	0	2	1	1.5000
8- Prosper C/ 10- Tehrani B/ 13- Koval K/ 15- Jensen L/ 25- Cernugel S/	4	00:06	4	00:00	00:06	0-3	-3	0	0	0	0	0.0000



Officials: Joseph Vaszily, Fatou Cissoko-Stephens, Rod Creech

Louisville

Lineup	Time	Score	Score Diff	Pts/Min	Reb	Stl	Tov	Ass	PPP
2- Harris N/ 12- Williams J/ 22- Roberts T/ 30- Curry J/ 44- Cochran O/	09:03	12-12	0	1.3260	11	1	4	3	0.7557
4- Randolph M/ 11- Istanbuluoglu E/ 13- Russell M/ 30- Curry J/ 44- Cochran O/	03:21	8-8	0	2.3881	1	0	0	0	1.1628
0- Arenas I/ 1- Berry I/ 11- Istanbuluoglu E/ 12- Williams J/ 15- Juffermans I/	03:15	6-6	0	1.8396	3	0	0	1	1.5000
2- Harris N/ 4- Randolph M/ 11- Istanbuluoglu E/ 22- Roberts T/ 30- Curry J/	02:40	4-4	0	1.5000	2	1	0	0	0.6329
1- Berry I/ 2- Harris N/ 12- Williams J/ 22- Roberts T/ 44- Cochran O/	02:29	4-4	0	1.6107	4	0	0	1	1.0000
0- Arenas I/ 1- Berry I/ 11- Istanbuluoglu E/ 12- Williams J/ 13- Russell M/	01:37	4-1	3	2.4742	2	1	1	1	0.9009
0- Arenas I/ 11- Istanbuluoglu E/ 13- Russell M/ 30- Curry J/ 44- Cochran O/	01:36	5-6	-1	3.1250	0	0	0	1	1.6667
2- Harris N/ 12- Williams J/ 15- Juffermans I/ 22- Roberts T/ 30- Curry J/	01:33	2-6	-4	1.2903	3	0	1	1	0.5000
2- Harris N/ 4- Randolph M/ 22- Roberts T/ 30- Curry J/ 44- Cochran O/	01:33	2-6	-4	1.2903	2	1	1	0	0.6667
1- Berry I/ 2- Harris N/ 11- Istanbuluoglu E/ 22- Roberts T/ 30- Curry J/	01:22	0-0	0	0.0000	2	0	1	0	0.0000
0- Arenas I/ 4- Randolph M/ 22- Roberts T/ 30- Curry J/ 44- Cochran O/	01:13	1-4	-3	0.8219	0	1	1	0	0.3472
1- Berry I/ 11- Istanbuluoglu E/ 12- Williams J/ 30- Curry J/ 44- Cochran O/	01:11	5-2	3	4.2254	3	0	0	0	2.5000
0- Arenas I/ 11- Istanbuluoglu E/ 22- Roberts T/ 30- Curry J/ 44- Cochran O/	01:11	0-2	-2	0.0000	0	0	1	0	0.0000
1- Berry I/ 2- Harris N/ 13- Russell M/ 30- Curry J/ 44- Cochran O/	01:11	0-4	-4	0.0000	1	0	1	0	0.0000
1- Berry I/ 11- Istanbuluoglu E/ 12- Williams J/ 22- Roberts T/ 44- Cochran O/	01:08	1-3	-2	0.8824	1	0	1	0	0.5319
2- Harris N/ 11- Istanbuluoglu E/ 12- Williams J/ 22- Roberts T/ 30- Curry J/	01:06	0-0	0	0.0000	1	0	1	0	0.0000
0- Arenas I/ 1- Berry I/ 4- Randolph M/ 11- Istanbuluoglu E/ 15- Juffermans I/	00:53	5-0	5	5.6285	1	2	0	2	2.5000
0- Arenas I/ 2- Harris N/ 11- Istanbuluoglu E/ 22- Roberts T/ 30- Curry J/	00:49	0-0	0	0.0000	1	0	1	0	0.0000
9- Hardy A/ 12- Williams J/ 13- Russell M/ 22- Roberts T/ 44- Cochran O/	00:44	0-2	-2	0.0000	0	0	1	0	0.0000
0- Arenas I/ 1- Berry I/ 2- Harris N/ 11- Istanbuluoglu E/ 13- Russell M/	00:31	0-0	0	0.0000	0	0	0	0	0.0000
4- Randolph M/ 9- Hardy A/ 12- Williams J/ 13- Russell M/ 44- Cochran O/	00:30	0-0	0	0.0000	1	0	0	0	0.0000
1- Berry I/ 2- Harris N/ 4- Randolph M/ 30- Curry J/ 44- Cochran O/	00:24	0-0	0	0.0000	0	0	1	0	0.0000
0- Arenas I/ 2- Harris N/ 15- Juffermans I/ 22- Roberts T/ 30- Curry J/	00:21	0-2	-2	0.0000	0	0	0	0	0.0000
2- Harris N/ 4- Randolph M/ 12- Williams J/ 13- Russell M/ 44- Cochran O/	00:16	0-0	0	0.0000	1	0	0	0	0.0000
1- Berry I/ 2- Harris N/ 11- Istanbuluoglu E/ 12- Williams J/ 30- Curry J/	00:00	0-0	0	NaN	0	0	0	0	0.0000
2- Harris N/ 4- Randolph M/ 12- Williams J/ 22- Roberts T/ 44- Cochran O/	00:00	0-0	0	NaN	0	0	0	0	0.0000



Officials: Joseph Vaszily, Fatou Cissoko-Stephens, Rod Creech

Notre Dame

Lineup	Time	Score	Score Diff	Pts/Min	Reb	Stl	Tov	Ass	PPP
3- Hidalgo H/ 5- Miles O/ 11- Citron S/ 20- King L/ 21- Westbeld M/	16:27	25-22	3	1.5198	19	1	8	6	0.8191
3- Hidalgo H/ 5- Miles O/ 11- Citron S/ 13- Koval K/ 32- Karlen L/	05:32	11-10	1	1.9880	6	1	3	3	1.0784
3- Hidalgo H/ 5- Miles O/ 8- Prosper C/ 13- Koval K/ 21- Westbeld M/	03:19	6-6	0	1.8018	2	0	2	1	1.5000
5- Miles O/ 8- Prosper C/ 11- Citron S/ 20- King L/ 32- Karlen L/	03:01	2-0	2	0.6630	4	3	1	0	0.5000
3- Hidalgo H/ 5- Miles O/ 11- Citron S/ 20- King L/ 32- Karlen L/	02:33	8-5	3	3.1373	6	0	0	1	2.0000
5- Miles O/ 8- Prosper C/ 11- Citron S/ 13- Koval K/ 32- Karlen L/	02:31	8-1	7	3.1788	5	1	1	2	1.6807
3- Hidalgo H/ 8- Prosper C/ 11- Citron S/ 13- Koval K/ 32- Karlen L/	01:12	2-0	2	1.6667	1	0	0	0	0.6944
3- Hidalgo H/ 5- Miles O/ 8- Prosper C/ 13- Koval K/ 32- Karlen L/	01:11	4-4	0	3.3803	1	0	0	0	1.0638
3- Hidalgo H/ 5- Miles O/ 8- Prosper C/ 20- King L/ 32- Karlen L/	01:08	3-1	2	2.6471	1	0	0	1	3.0000
3- Hidalgo H/ 8- Prosper C/ 11- Citron S/ 13- Koval K/ 21- Westbeld M/	00:51	0-3	-3	0.0000	0	0	1	0	0.0000
3- Hidalgo H/ 5- Miles O/ 11- Citron S/ 13- Koval K/ 20- King L/	00:45	0-0	0	0.0000	3	0	1	0	0.0000
3- Hidalgo H/ 5- Miles O/ 8- Prosper C/ 11- Citron S/ 20- King L/	00:30	0-0	0	0.0000	0	0	0	0	0.0000
5- Miles O/ 8- Prosper C/ 11- Citron S/ 21- Westbeld M/ 32- Karlen L/	00:30	3-2	1	6.0000	0	0	1	0	1.5000
3- Hidalgo H/ 5- Miles O/ 8- Prosper C/ 20- King L/ 21- Westbeld M/	00:23	0-2	-2	0.0000	0	0	1	0	0.0000
8- Prosper C/ 10- Tehrani B/ 13- Koval K/ 15- Jensen L/ 25- Cernugel S/	00:06	0-3	-3	0.0000	0	0	0	0	0.0000