



WOMEN'S LACROSSE

2025 Season | Game 14

FIGHTING
IRISH MEDIA
WOMEN'S LACROSSE
CONTACT

Aly Prigge
aprigge@nd.edu
419-591-9329



#25 NOTRE DAME (6-7, 1-6)

vs.

PITT (7-7, 1-6)

SATURDAY, APRIL 12

Pittsburgh, PA | 12:00 PM ET

Highmark Stadium

TV Broadcast ACCNX

Live Stats Statbroadcast

Social @ndwomenslax



The Series

OVERALL

Record: Lead 3-0

Streak: W3

Last Meeting: W, 17-6 on April 14,
2023 in Pittsburgh, PA

Head Coaches

NOTRE DAME CHRISTINE HALFPENNY

Record at School:
159-91 (14th Year)

Overall Record:
202-135 (18th Year)

PITTSBURGH EMILY BOISSONNEAULT

Record at School:
25-43 (4th Year)

Overall Record:
25-43 (4th Year)

BY THE NUMBERS

NOTRE DAME

1

Grace Weigand received USA Lacrosse Magazine Women's Preseason All-American Honorable Mention honors.

2

Two new assistant coaches join this season as Caroline Curnal and Ellie Masera joined the staff in August of 2024.

3

The Irish named three captains for the 2025 campaign: Julia Carr, Kristen Shanahan, and Grace Weigand.

3

The Irish graduated the three-headed monster of Jackie Wolak, Madison Ahern, and Kasey Choma in 2024, who are now all on the same WLL team – the Boston Guard.

4

Emma Murphy scored a career-high 4 goals in the win over UC Davis.

5

Rassas recorded 5 goals and 8 points in the win over CMU, the most by any Notre Dame freshman.

10

Kristen Shanahan won a career-high 10 draw controls in the win over CMU.

11

The Irish welcome 11 freshman to this year's squad.

13

Ava Kristynik recorded a career-high 13 draw controls in the win over UC Davis.

14

Isabel Pithie recorded a career-high 14 saves against #23 Harvard.

35

Morrissey leads the Irish with 35 points and 15 assists this season.

202

Head Coach Christine Halfpenny reached the 200 career-wins milestone last week at Cal as she currently has 202 wins as a head coach with 159 of them at Notre Dame.



2025 Schedule

Overall: 6-7 (1-6 ACC)

Home: 3-4; Away 3-3; Neutral 0-0

| Date | Opponent | Time (ET)/Result |
|---------|------------------|------------------|
| 1/26 | Michigan (Exh.) | ----- |
| 2/7 | at Northwestern | L, 10-13 |
| 2/9 | Central Michigan | W, 20-7 |
| 2/15 | Eastern Michigan | W, 17-7 |
| 2/22 | Clemson | L, 11-12 |
| 2/28 | at Duke | L, 9-11 |
| 3/2 | at Elon | W, 8-4 |
| 3/8 | Boston College | L, 9-15 |
| 3/13 | at Cal | W, 15-8 |
| 3/15 | at UC Davis | W, 18-6 |
| 3/19 | Harvard | W, 8-6 |
| 3/23 | at Syracuse | L, 11-12 |
| 3/30 | North Carolina | L, 3-14 |
| 4/5 | Stanford | L, 7-8 |
| 4/12 | at Pitt | 12:00 PM |
| 4/17 | Louisville | 3:00 PM |
| 4/21-27 | ACC Tournament | ----- |

* - Atlantic Coast Conference game

^ - ACC Tournament



2025 Notre Dame Women's Lacrosse TEAM INFORMATION

NOTRE DAME ROSTER

| No. | Name | Pos. | Year | Hometown | Previous School |
|-----|------------------|------|------|---------------------|--|
| 0 | Katherine Carr | M/DS | Fr. | Rockville, MD | Stone Ridge School of the Sacred Heart |
| 1 | Grace Weigand | D | Sr. | Denver, CO | Regis Jesuit High School |
| 2 | Abigail Lyons | D | Jr. | Carle Place, NY | Carle Place |
| 3 | Kathryn Morissey | M | So. | Skaneateles, NY. | Skaneateles |
| 4 | Ellie McClelland | M | Fr. | New Albany, OH | New Albany |
| 5 | Erin Hooper | M | So. | Annapolis, MD | Severn School |
| 6 | Fran Frieri | A | Jr. | Lockport, IL | Lockport Township |
| 7 | Maeve Dwyer | A/DS | Jr. | Winnetka, IL | Loyola Academy |
| 8 | Molly Moore | D | Fr. | Darien, CT | Greenwich Academy |
| 9 | Meghan O'Hare | M | So. | Annapolis, MD | St. Mary's High School |
| 10 | Kiki Liebezeit | M | Fr. | Berwyn, PA | Conestoga |
| 11 | Marleigh Sanders | A | Sr. | Milton, GA | Milton |
| 12 | Emma Murphy | A | Jr. | Midland, MI | H.H. Dow |
| 13 | Julia Carr | D | Sr. | Rockville, MD | Stone Ridge School of the Sacred Heart |
| 14 | Franny O'Brien | M | Jr. | Bedford Corners, NY | Sacred Heart Greenwich |
| 15 | Shannon Earley | M | Fr. | Hinsdale, IL | Benet Academy |
| 16 | Kristen Shanahan | M | Gr. | Holbrook, NY | Sachem High School East |
| 17 | Angie Conley | M | So. | Clarendon Hills, IL | Hinsdale Central |
| 18 | Anna Kenney | A | Jr. | Hingham, MA | Thayer Academy |
| 19 | Hadley Keating | A | Fr. | Troy, MI | Detroit Country Day School |
| 21 | Ava Kristynik | A/DS | Sr. | Southlake, TX | Liberty Christian School |
| 22 | Kate Timarky | A | So. | Centereach, NY | Centereach |
| 23 | Margot Johnson | D | Fr. | Radnor, PA | Radnor |
| 24 | Ellie Noto | D | Jr. | Atherton, CA | Sacred Heart Preparatory |
| 27 | Madison Rassas | M | Fr. | Sterling, VA | Georgetown Visitation |
| 28 | Sloane Ginevan | D | So. | Falmouth, ME | Falmouth |
| 30 | Malie Follet | GK | Sr. | Fulton, NY | G. Ray Bradley |
| 33 | Katie Mallaber | A | Fr. | Fairport, NY | Fairport |
| 34 | Lilly Eccles | D | So. | Maplewood, NJ | Kent Place |
| 41 | Lila O'Brien | M | Fr. | Bedford Corners, NY | Sacred Heart Greenwich |
| 42 | Isabel Pithie | GK | Sr. | Norwell, MA | Norwell |
| 43 | Avery Gawronski | GK | Jr. | Mullica Hill, NJ | Clearview Regional |
| 44 | Wynter Jock | A | So. | Akwesasne, NY | Salmon River |
| 55 | Carson Didden | D | Fr. | Morristown, NJ | Oak Knoll School |



COACHING STAFF

| | | | |
|-----------------|---------------------|-------------------|-------------|
| Head Coach | Christine Halfpenny | Virginia Tech '99 | 14th Season |
| Assistant Coach | Caroline Curnal | Villanova '23 | 1st Season |
| Assistant Coach | Ellie Masera | Stony Brook '24 | 1st Season |

PRONUNCIATION

Ava Kristynikkrist-in-ick
 Grace Weigandwhy-gan
 Malie Follet“May May” fo-let
 Fran Frierifee-air-ee
 Avery Gawronskiguh-ron-ski



2025 NOTRE DAME WOMEN'S LACROSSE ROSTER



Katherine Carr
Fr. • Midfield/Draw
Specialist



Grace Weigand
Sr. • Defense



Abigail Lyons
Jr. • Defense



Kathryn Morrisey
So. • Midfield



Ellie McClelland
Fr. • Midfield



Erin Hooper
So. • Midfield



Fran Frieri
Jr. • Attack



Maeve Dwyer
Jr. • Midfield/Draw
Specialist



Molly Moore
Fr. • Defense



Meghan O'Hare
So. • Midfield



Kiki Liebezeit
Fr. • Midfield



Marleigh Sanders
Sr. • Attack



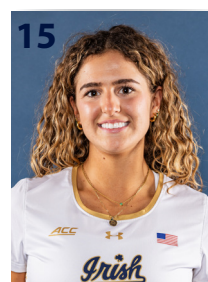
Emma Murphy
Jr. • Attack



Julia Carr
Sr. • Defense



Franny O'Brien
Jr. • Midfield



Shannon Earley
Fr. • Midfield



Kristen Shanahan
Gr. • Midfield



Angie Conley
So. • Midfield



Anna Kenney
Jr. • Attack



Hadley Keating
Fr. • Attack



Ava Kristynik
Sr. • Midfield/Draw



Kate Timarky
So. • Attack



Margot Johnson
Fr. • Defense



Ellie Noto
Jr. • Defense



2025 NOTRE DAME WOMEN'S LACROSSE ROSTER



Madison Rassas
Fr. • Midfield



Sloane Ginevan
So. • Defense



Malie Follet
Sr. • Goalkeeper



Katie Mallaber
Fr. • Attack



Lilly Eccles
So. • Defense



Lila O'Brien
Fr. • Midfield



Isabel Pithie
Sr. • Goalkeeper



Avery Gawronski
Jr. • Goalkeeper



Wynter Jock
So. • Attack



Carson Didden
Fr. • Defense

COACHING STAFF



Christine Halfpenny
Head Coach



Caroline Curnal
Assistant Coach



Ellie Masera
Assistant Coach

Director of Operations - Allegra Lucia
Athletic Trainer - Brad Kneibel
Strength and Conditioning Coach - Stu Roche



2025 Notre Dame Women's Lacrosse
TEAM NUMBERS

| Notre Dame's Record in 2025 | |
|-----------------------------|-----|
| Home | 3-4 |
| Away | 3-3 |
| Neutral | 0 |
| Indoors | 2-3 |
| Outdoors | 4-4 |
| vs. ACC | 1-6 |
| vs. Top-10 Teams | 0-5 |
| vs. Top-20 Teams | 0-6 |
| Scoring First | 3-1 |
| Opponent Scores First | 3-6 |
| Leading at Halftime | 6-1 |
| Trailing at Halftime | 0-6 |
| Overtime Games | 0 |
| One-Goal Games | 0-3 |
| Two-Goal Games | 1-1 |
| Scoring 1-5 Goals | 0-1 |
| Scoring 6-9 Goals | 2-3 |
| Scoring 10-14 Goals | 0-3 |
| Scoring 15+ Goals | 4-0 |
| Allowing 0-5 Goals | 1-0 |
| Allowing 6-9 Goals | 5-1 |
| Allowing 10-14 Goals | 0-5 |
| Allowing 15+ Goals | 0-1 |
| In February | 2-3 |
| In March | 4-3 |
| In April | 0-1 |
| In May | 0 |
| Day Games | 6-5 |
| Night Games | 0-2 |



National Rankings

| 2024-25 National Ranking | | |
|--------------------------|---|----------|
| Week | Outlet | Ranking |
| Preseason | Inside Lacrosse/USA Lacrosse Magazine | 13/13 |
| Week 1 (2/10) | IWLCA/Inside Lacrosse/USA Lacrosse Magazine | 11/11/13 |
| Week 2 (2/17) | IWLCA/Inside Lacrosse/USA Lacrosse Magazine | 11/11/13 |
| Week 3 (2/24) | IWLCA/Inside Lacrosse/USA Lacrosse Magazine | 17/17/17 |
| Week 4 (3/3) | IWLCA/Inside Lacrosse/USA Lacrosse Magazine | 20/22/-- |
| Week 5 (3/10) | IWLCA/Inside Lacrosse/USA Lacrosse Magazine | 19/21/-- |
| Week 6 (3/17) | IWLCA/Inside Lacrosse/USA Lacrosse Magazine | 20/21/-- |
| Week 7 (3/24) | IWLCA/Inside Lacrosse/USA Lacrosse Magazine | 20/20/20 |
| Week 8 (3/31) | IWLCA/Inside Lacrosse/USA Lacrosse Magazine | 21/21/-- |
| Week 9 (4/7) | IWLCA/Inside Lacrosse/USA Lacrosse Magazine | 25/24/20 |

ACC Standings

| 2024-25 ACC Standings | |
|-----------------------|----------|
| Week | Standing |
| Preseason | 6 |
| Week 1 (2/10) | 12 |
| Week 2 (2/17) | 8 |
| Week 3 (2/24) | 9 |
| Week 4 (3/3) | 9 |
| Week 5 (3/10) | 11 |
| Week 6 (3/17) | 9 |
| Week 7 (3/24) | 9 |
| Week 8 (3/31) | 9 |
| Week 9 (4/7) | 9 |

| University Information | |
|---|--|
| School | University of Notre Dame |
| Location | South Bend, IN 46556 |
| Founded | 1842 |
| Enrollment | 8,932 (Undergraduate), 13,129 (Total) |
| Nickname | Fighting Irish |
| Colors | Gold and Blue |
| Affiliation | NCAA Division I |
| Conference | Atlantic Coast Conference (ACC) |
| President | Rev. Robert A. Dowd |
| Provost | John T. McGreevy (since July 1, 2022) |
| NCAA Faculty Representative | Patricia Bellia (Harvard '91) |
| Athletic Director | Pete Bevaqua (Norte Dame '93) |
| Sr. Assoc. Athletic Director/ Sport Administrator | Katie Capps (Western Kentucky '02) |
| Home Venues | Arlotta Stadium (Outdoor) Loftus Sports Center (Indoor) |

| Team Information | |
|---------------------------|---------------------|
| 2024 Overall Record | 16-4 |
| 2024 ACC Record | 7-2 |
| 2024 Postseason | 2-2 |
| All-time Record | 300-182 (.623) |
| ACC Regular Season Record | 47-23 (.517) |
| Returning Players | 23 |
| Players Lost | 16 |
| Newcomers | 11 Freshman |
| NCAA Appreances | 17 (Last 2024) |
| Best NCAA Finish | Semifinalist (2006) |
| First Varsity Season | 1997 |



2025 Notre Dame Women's Lacrosse

HEAD COACH CHRISTINE HALFPENNY



CHRISTINE HALFPENNY
WOMEN'S LACROSSE HEAD COACH

14th Season at Notre Dame
18th as a Head Coach at the DI Level

Christine Halfpenny enters her 14th season as head coach of the Notre Dame women's lacrosse program in 2025 after leading the Irish to the NCAA tournament in nine of the previous 10 completed seasons.

The 2024 season saw unprecedented success for the Irish as Halfpenny led the team to break numerous program records, including most points in a game, most draw controls in a game, most goals in a season, most assists in a season, and most points in a season. The 2024 season featured two IWLC A All-Americans in Jackie Wolak and Kasey Choma, a record six IWLC A All-Region honorees, and the first Tewaaraton Finalist (Wolak) since 2016. Last season also included the program's first-ever victory over a top-ranked team when they defeated regional rival Northwestern, 14-10, at home. Other notable wins in 2024 include the program's first win at Boston College since 2003 and their first program win in Chapel Hill when they beat UNC in a defensive 7-5 battle in early March.

In 2023, Halfpenny guided the team to its sixth Elite Eight in program history and second in three years, following road wins over the first two rounds of the NCAA Tournament, becoming the only unseeded team to advance to the Elite Eight round. The 2023 season saw the program's largest road win in team history and most goals scored in an NCAA Tournament game by the Irish. Other notable victories in 2023 include snapping UNC's ACC win-streak with a 16-12 victory over the then-No. 3 Tar Heels in Indiana, and a 15-13 win over Virginia in the ACC Quarterfinals. The 2023 season saw six Irish honored as All-Americans, including Madison Ahern, Kasey Choma, Lilly Callahan, Kelly Denes, Hannah Dorney, and Jackie Wolak.

The 2022 season saw the team earn a berth in the NCAA Tournament following a 9-9 record through the ACC Tournament. The Irish, led by Halfpenny, advanced to the ACC Semifinals where they lost heartbreaker to top seeded North Carolina, 14-13.

Halfpenny helped guide the Irish to the Elite Eight for the fifth time in program history in 2021 and sixth ranked wins, including a trio of top-10 victories against Duke (2x) and Virginia. Bridget Deehan was named a First Team IWLC A All-American while Kasey Choma earned Second Team IWLC A All-American honors. En route to the NCAA Quarterfinals, the Irish won two home NCAA Tournament contests for the first time in program history and notched the first-ever shutout in the history of the NCAA Division I Women's Lacrosse Tournament with a 16-0 triumph over Robert Morris in the opening round.

In a 2020 season that was shortened due to COVID-19, Halfpenny led the Irish to a 7-0 record and a #2 national ranking, which tied the 2004 squad for the highest ranking in program history. Four Irish earned Inside Lacrosse All-American honors in the abbreviated season, including Andie Aldave (First Team), Kasey Choma (Third Team), Bridget Deehan (First Team) and Madison Ahern (Second Team). Ahern was also named IL's Freshman of the Year and Deehan was named Goaltender of the Year.

The Irish returned to the NCAA Tournament in 2019 after going a program-best 5-2 in ACC play. Notre Dame finished the 2019 campaign with a 14-5 mark, and the 14 victories tied the 2016 Irish squad for the third-most in a single season in program history. Notre Dame's season included a 9-7 triumph over North Carolina, marking Notre Dame's first-ever win over the Tar Heels. The Irish landed three IWLC A All-Americans, including Andie Aldave (First Team), Samantha Giacalone (Third Team) and Maddie Howe (Honorable Mention). Aldave, Giacalone and Howe joined Hannah Proctor as First Team All-ACC selections, while Savannah Buchanan earned Second Team All-ACC accolades. The four First-Team All-ACC selections are the most the Irish have earned since joining the conference in 2014, and the five total honorees tie the 2016 Irish squad for the most recognitions since becoming an ACC member.

Notre Dame made its sixth consecutive trip to the NCAA Championships in 2017. The Irish ultimately finished the season 11-8 with a 4-3 record in ACC play, matching the program's best record since joining the conference in 2013-14. Notre Dame, which finished third overall in the ACC, led the conference in ground balls and caused turnovers per game. Notre Dame's season was highlighted by a 16-7 victory over then-No. 4 Syracuse in which the Irish seniors tallied 13 points. The Irish landed three All-ACC selections, including Casey

Pearsall (first team), Cortney Fortunato (first team) and Alex Dalton (second team). Both Casey Pearsall and Cortney Fortunato were named to the Tewaaraton Watch List, and both players received All-America honors.

The 2016 Irish earned a trip to the NCAA Quarterfinals for the first time since 2009. Notre Dame finished 14-7 overall and 4-3 in the Atlantic Coast Conference. Halfpenny's team played a schedule that featured five regular-season, top-10 opponents and 12 teams eventually selected to play in the NCAA Championship. She coached her team to an 8-2 record on their home turf, including two top-10 wins at Arlotta Stadium. Her squad included three IWLC A All-Americans: Cortney Fortunato (first team), Barbara Sullivan (first team) and Casey Pearsall (third team). Three Irish players, including Alex Dalton, Cortney Fortunato and Barbara Sullivan, landed on the Tewaaraton Watch List. Halfpenny's roster received five All-ACC accolades, the most all-conference picks by an Irish team since 2004 (six Big East selections).

The 2015 Irish continued striding towards Halfpenny's lofty goals for the program as the Irish beat three top-seven teams on the road en route to an ACC semifinal berth and another trip to the NAAs. The squad saw four of its members pick up All-America honors in Cortney Fortunato (first-team), Barbara Sullivan (first-team), Alex Dalton (second-team) and Casey Pearsall (third-team). Sullivan also became the school's first-ever defensive finalist for





2025 Notre Dame Women's Lacrosse

HEAD COACH CHRISTINE HALFPENNY

the Tewaaron Trophy and just its second finalist overall. Meanwhile, Katherine McManus earned the Yeardley Reynolds Love Unsung Hero Award for her well-rounded contributions to the community and Caitlin Gargan became the latest in a succession of IWLCA Academic Honor Roll recipients.

That success built off of a 2014 season which saw Notre Dame earn a top-eight NCAA Championship seed and play host to its NCAA regional for the first time since 2009. Margaret Smith picked up first-team All-America honors while Cortney Fortunato claimed a second-team award along with WomensLax.com Rookie of the Year award. Smith was a Tewaaron Trophy nominee and the co-Defensive Player of the Year nationally. Senior Molly Shawhan earned her second consecutive Yeardley Reynolds Love Unsung Hero finalist spot for her tireless work off of the field as well.

The Irish suffered no sophomore slump under Halfpenny in 2013 as the team went 12-5 and again secured a berth to the NCAA Tournament. Notre Dame beat three ranked foes in 2013 and opened the season on a 10-game winning streak, matching the 2004 school record. Barbara Sullivan was named a first-team All-American after the season, leading a defense that ranked amongst the top five teams nationally in both caused turnovers and ground balls. Overall, the 2013 Irish featured five All-BIG EAST players, five IWLCA West/Midwest all-region picks and 18 BIG EAST Academic All-Stars.

The Irish turned in quite a year in Halfpenny's first campaign at the helm of the program as they finished 13-5 in 2012 and earned bids to

both the BIG EAST and NCAA Tournaments. The 13 regular season wins was tied for first in school history, while the 13 wins overall was tied for third in school annals. Notre Dame knocked off five ranked teams during the year as it raced out to an 8-0 start, which was the second-best start in school history and the best since 2004. Halfpenny became the first coach in BIG EAST history to start out 8-0 in their opening year at the helm of their program.

Halfpenny helped tutor five All-BIG EAST and IWLCA West/Midwest all-region performers and two All-Americans. Earning All-BIG EAST and All-Region honors were Maggie Tamasitis, Margaret Smith, Barbara Sullivan, Megan Sullivan and Lindsay Powell. Tamasitis went on to earn second team All-America honors, while Smith was a third teamer.

In the classroom, the 2012 squad was an IWLCA Academic Squad team (combined GPA of 3.0 or higher), while three student-athletes made the IWLCA Academic Honor Roll (Kelly Driscoll, McKenzie Brown and Adelle Bruggeman).

Halfpenny came to Notre Dame from William & Mary, where her teams achieved four straight 10-win seasons and a pair of regular-season conference titles over her final four seasons with the program.

Halfpenny's Tribe squads captured Colonial Athletic Association regular-season titles in both 2008 and 2009 – and she merited CAA coach-of-the-year honors in 2008. Her teams combined for a 20-8 record in league play (including four straight conference tournament bids) – as William & Mary reached double digits in victories each of the last four seasons (10-7 in 2011 and 2009, 10-8 in 2010, 10-9 in 2008). Those four consecutive 10-win seasons matched the best previous stretch in program history.

"Chris brings to Notre Dame the experiences of having been involved with multiple programs and teams that have been to the NCAA final four, won conference titles and produced All-Americans," said Notre Dame vice president and athletics director Jack Swarbrick at the time of her hire. "From a coaching, recruiting and academic standpoint, she understands exactly what the expectations are here at Notre Dame and what it will take for our program to take the next set of steps forward."

Notre Dame's newest head coach tutored two All-Americans at William & Mary, to go along with 26 all-conference selections and 10 all-region honorees. Her 2011 squad became the first in CAA history to receive awards for player of the year, defensive player of the year and rookie of the year in the same season.

Her five seasons with the Tribe produced

single-season records for points (347 in 2009), goals (244 in 2009), draw controls (269 in 2009), caused turnovers (third nationally in 2010 at 12.61 per game) and saves (211 in 2008).

In the classroom Halfpenny's players earned 59 combined CAA Commissioner's Academic Awards from 2007-2010, as well as five William & Mary Provost Awards.

Halfpenny went to Williamsburg in the summer of 2006 after three years (2004-2006) as the top women's lacrosse assistant coach at Duke University.

The Blue Devils won the 2005 Atlantic Coast Conference postseason tournament title, won or shared three straight ACC regular-season crowns and made three straight NCAA Championships appearances, advancing to the national semifinals in both 2005 and 2006.

Halfpenny worked specifically with goal-tenders at Duke, assisting Megan Huether in 2005 in earning first-team All-America honors. She played a key role in producing three recruiting classes at Duke that ranked among the top four in the nation (including the number-one-rated class in 2005 by Inside Lacrosse). The 2004 Duke team produced the top women's lacrosse grade-point average in the country (3.46).

Halfpenny also spent a season as an assistant women's lacrosse coach at her alma mater, Virginia Tech, in 2003, directing recruiting and serving as offensive coordinator. She began her coaching career as an assistant coach at Brown University in 2001 and 2002.

Off the field Halfpenny has worked with several national committees including the IWLCA All-American committee, NCAA regional advisory committee, the Tewaaron Award committee and the IWLCA North-South Game selections.

Before joining the college coaching ranks she spent one year as boys' and girls' swimming coach and assistant varsity tennis coach (winning the Virginia Boys AAA state swimming title) at Cave Spring High School in Roanoke, Va.

A four-year letter-winner in women's lacrosse at Virginia Tech, Halfpenny started on the 1999 Hokie team that won the Atlantic 10 Conference championship, finished 11-6 and achieved a program-first top-20 ranking. She received the coaches award that year and was a two-time member of the athletic director's honor roll (1998, 1999). She graduated in 1999 with a degree in health and physical education.





2025 SEASON



NOTRE DAME BACK ON THE ROAD TO TAKE ON PITT

The No. 25 Fighting Irish (6-7, 1-6) are set to take on the Pitt Panthers (7-7, 1-6) on Saturday at noon at Highmark Stadium. The Irish lead the overall series 3-0.

IRISH HOST #10 STANFORD

The No. 21 Fighting Irish (6-7, 1-6) fell 7-8 to No. 10 Stanford (11-3, 5-2) on Saturday, April 5.

Kathryn Morrissey led the Irish offense with 4 points, scoring 2 goals and 2 assists. She was followed by Meghan O'Hare who also netted a pair of goals for the Irish. Kristen Shanahan, Kate Timarky, and Katie Mallaber each recorded a goal on the day as well.

The sister duo of Franny O'Brien and Lila O'Brien were great on the defensive end, recording 5 caused turnovers and 4 ground balls respectively. Isabel Pithie was in goal for the Irish, recording 6 saves and 2 ground balls.

ON THE ROAD AT #9 SYRACUSE

The No. 20 Fighting Irish fell in a tough 11-12 battle to #9 Syracuse on Sunday, March 23.

Kristen Shanahan led the Irish with a career-high five goals, netting a hat trick in the first half of play. She also dished out an assist for a career-high six points.

Six other Irish players netted one goal on the day as Madison Rassas, Kathryn Morrissey, Emma Murphy, Meghan O'Hare, Kate Timarky and Katie Mallaber each scored.

Morrissey also dished out a team-best and career-high four assists for five points on the

day. Isabel Pithie was in goal for the Irish as she finished with 12 saves and a .500 save percentage.

HOME AGAINST #23 HARVARD

The No. 20 Fighting Irish were back on their home turf for the first time since hosting No. 1 Boston College nearly two weeks prior as they hosted the No. 23 Harvard Crimson on Wednesday, March 19.

The Irish secured their first ranked win of the season with an 8-6 victory. Madison Rassas did it again, recording four goals for her third straight hat trick and sixth hat trick of the season. She leads the Irish with 28 goals and 32 points this season.

A WEEK IN CALIFORNIA

The Irish were on the road for spring break as they took on Cal for the first time in ACC play as the Golden Bears joined the conference just last year. The Irish will then faced UC Davis just a few days later as the Irish and Aggies have played just once prior, dating all the way back to March 9, 1998.

Notre Dame went a perfect 2-0 in Cali, defeating the Golden Bears 15-8 and defeating the Aggies 18-6. Rassas led the offensive charge with a team-best 7 goals and 8 points across the two wins.

Rassas had back-to-back hat tricks, recording 3 goals and 4 goals respectively, and has now had five hat tricks so far on the season. She also won 10 draw controls, winning 7 against Cal and 3 against UC Davis.

Kathryn Morrissey finished with a career-high 4 goals and 6 points in the win over Cal and Emma Murphy recorded a career-high 4 goals against UC Davis.

Ava Kristynik also finished with a career-best 13 draw controls against UC Davis.

ARLOTTA TIME: IRISH HOST #1 BOSTON COLLEGE

The No. 20 Irish are back at home and are set to play at Arlotta Stadium for the first time this season as No. 1 Boston College comes to town.

The Irish went 1-1 against the Eagles last season as they defeated Boston College in the regular season, 15-14.

The game came down to the wire and included eight ties but it was the Notre Dame squad that reigned victorious after a save on the defensive side of the ball with 61 seconds in regulation led to the game-winning goal off the stick of MK Doherty as the clock wound down.

The last matchup between the two squads was in last season's ACC Semifinals as the Irish fell, 7-9.

IRISH SET FOR A WEEKEND IN NORTH CAROLINA

The No. 17 Irish are back on the road for another conference matchup as they head to Duke (2-2, 0-1) on Friday, Feb. 28. for a 2:00 p.m. game at Koskinen Stadium.

This will be the first road test of ACC play for Notre Dame as they are 0-1 to start league play after a close battle to Clemson at home, falling 11-12 in the final minute.

The Irish lead the overall series 14-13 with their last win over Duke coming last season at home as Notre Dame defeated the Blue Devils, 19-7. The Irish have won 5 of the last 6 matchups against Duke as they look to make it four straight wins on Friday.



2025 Notre Dame Women's Lacrosse

The last time the Irish have played Duke in Durham was March 28, 2001, where Notre Dame won 13-9.

On Sunday, March 2, the Irish will head to Elon (2-2, 0-0) to take on the Phoenix at 11 a.m. The Irish are 2-0 in the overall series with the last match up happening on Feb. 25, 2018.

The Irish will continue to look for it's top offensive weapons this weekend. Madison Rassas leads the Irish offense with 13 goals and 16 points.

Kate Timarky and Kristen Shanahan have each recorded 10 goals a piece this season, followed by Angie Conley and Emma Murphy with seven. Shanahan leads the Irish with 14 draw controls, followed by Rassas with 11. Meghan O'Hare leads the team with 10 ground balls and eight caused turnovers for the Irish.

CONFERENCE PLAY STARTS WITH CLEMSON

The No. 11 Notre Dame Fighting Irish are set to open up ACC play against No.19 Clemson on Saturday night at 8:00 p.m. inside of Loftus Sports Center.

The Irish lead the overall series 3-0 after taking down the Tigers 14-13 in double-overtime on the road in the 2024 regular season and then again in the ACC Tournament just one month later, 14-12. Their first-ever win over the Tigers came in their first year as a program in the 2023 season as Notre Dame won 12-9 at home.

The Irish are 2-1 to start the season as they open up the conference slate. Madison Rassas is leading the offensive charge so far, putting up 10 goals and 13 points in the last two games with back-to-back five goal performances. She put up an impressive eight points in the home opener on Feb. 15 against Central Michigan, the most goals and points scored by an Irish freshman.

She's followed by Kate Timarky and Kristen Shanahan, who have already recorded two hat tricks this season. Shanahan also leads the Irish with 14 draw controls.

Defensively, Meghan O'Hare is leading the way with nine ground balls and seven caused turnovers for the Irish.

Isabel Pithie has had a strong start in goal for the Irish with a 2-0 record, 17 saves, and a

save percentage of .548.

HEADING INTO EASTERN MICHIGAN

The No. 11 Notre Dame Fighting Irish are set to host Eastern Michigan on Saturday at 3 PM inside of Loftus as they look

The Irish opened up last weekend 1-1 after falling 13-10 to No. 2 Northwestern on the road and defeating Central Michigan 20-7 in their home opener.

It was a weekend of several career firsts for the Irish.

In Friday's season opener, Isabel Pithie recorded a career-high 12 saves against a high powered Northwestern offense.

The Irish offense was led by three standouts on Friday night; Kate Timarky, Kristen Shanahan, and Kathryn Morrissey. The trio each recorded a hat trick, each tying their respective career highs.

In Sunday's home opener, Madison Rassas not only scored her first career goal in the CMU win, but led all players with five goals, the most scored by any Notre Dame freshman in a home opener. She finished the day with an impressive stat line of 5 goals, 3 assists, 8 points, 3 draw controls, 2 caused turnovers, and a ground ball.

After scoring her first career goal against Northwestern, Emma Murphy recorded her first career hat trick. Angie Conley had herself a career day as well, recording her first ever hat trick.

Kristen Shanahan played a great game on both sides of the ball as she sent home two goals and won a career high 10 draw controls.

OPENING WEEKEND FOR THE IRISH

No. 13 Notre Dame opened their 2025 season on the road in Evanston, Illinois as they fell 13-10 in a tough battle to No. 2 Northwestern on Friday, Feb. 7.

The Irish offense was led by three standouts on the night; Kate Timarky, Kristen Shanahan, and Kathryn Morrissey.

The trio each recorded a hat trick, each tying their respective career highs. Timarky also recorded three ground balls.

Emma Murphy was the fourth scorer of the night, notching her first career goal in the season opener.

Abby Lyons, Meghan O'Hare, and Julia Carr each finished with team-highs of three caused turnovers a piece.

Isabel Pithie finished the night with a career-high 12 saves and led the Irish with four ground balls

The Irish are no stranger to the tall-task of taking on a top Wildcat program – Notre Dame did it in record-setting fashion just last year.

For the first time in program history, the No. 8 Fighting Irish women's lacrosse team knocked off the No. 1 team in the country, defeating top-ranked Northwestern by a score of 14-10 in Loftus Sports Center on February 16, 2024.

The Irish snapped Northwestern's 22-game winning streak.

While the Irish were led by three 2024 graduates of Jackie Wolak, Madison Ahern, and Abby Maichin in the big win, Notre Dame will have a young group of talent coming into this year's matchup hungry to start the season.

The Irish will lean on key leaders **Grace Weigand (D), Meghan O'Hare (M), Kathryn Morrissey (M), Franny O'Brien (M), and Abigail Lyons (D)** as returning starters.

Other returners who will be seen this season feature **Wynter Jock (A), Kristen Shanahan (M), and Isabel Pithie and Malie Follet** in goal.

After Friday's opening day on the road, Notre Dame will host the Chippewas in Loftus on Sunday. The Irish are a perfect 4-0 against Central Michigan with their last match up being last season as Notre Dame won in dominating fashion 22-3.

A LOOK AHEAD

The 2025 season features 15 regular season games with eight at home and seven on the road. Nine conference games are set for this upcoming spring season after the additions of Cal and Stanford to the Atlantic Coast Conference in 2024.

"This year's schedule has us entering a new era of ACC lacrosse with an expanded conference and new scheduling model," said Notre Dame Women's Lacrosse Head Coach Christine Halfpenny.

"The ACC will again be one of the strongest



2025 Notre Dame Women's Lacrosse

conferences in the country. We're excited to attack the games in front of us this year both in and out of conference beginning with a great season opening regional rivalry with Northwestern."

IRISH WELCOME 11 FRESHMEN

With a large class of 17 graduating last season, the Irish have welcomed 11 freshmen to the roster.

Five of which were included in the ILWomen's Class of 2024 Power 100 Incoming Freshmen Rankings:

- **Madison Rassas (#2)**
- **Katie Mallaber (#32)**
- **Carson Didden (#42)**
- **Kiki Liebezeit (Watchlist)**
- **Ellie McClelland (Watchlist)**



THE RASSAS FAMILY IS NO STRANGER TO NOTRE DAME

Rassas isn't just listed as one of the top players in the 2024 class in the country, but she has a chance to continue her family's legacy at Notre Dame.

She comes from a long line of Notre Dame graduates, including both parents (Todd and Angela Rassas) as well as her grandfather and great-grandfather.

Her father, Todd, was an All-American lacrosse player at Notre Dame ('98), while her grandfather and great-grandfather were both All-American football players for the Irish.

WATCH OUT FOR WEIGAND

Senior defender **Weigand** was recently named to 2025 Tewaaraton Watch list and also received USA Lacrosse Magazine

Women's Preseason All-American Honorable Mention honors.

She finished the 2024 season playing in 20 games and recorded 24 ground balls and forced 17 turnovers.



TWO NEW ADDITIONS TO THE COACHING STAFF

Head Coach Chris Halfpenny introduced two new additions to the staff in August 2024 as she welcomed **Caroline Curnal** and **Ellie Masera** to the Irish.

Curnal, a 2023 Villanova graduate, started 47 of the 54 games she played in and totaled 94 points and 17 assists for 111 points. In addition to her record 382 draws, she had 34 ground balls and 14 caused turnovers. She helped guide the program to a 15-5 season, where they advanced all the way to the NCAA quarterfinal round in 2024. Penn ranked as high as fifth during the course of the regular season, boasted one of the strongest defensive units in the country, and saw Niki Miles break program records for draw controls in a game and a season.

Miles was one of four first-team All-Ivy and three All-Americans on the roster, and another of those All-America picks (Izzy Rohr) was the Ivy League Defender of the Year for the second straight season.

She capped off her Wildcat career as the team captain and draw specialist, breaking the program's career draw record with 382 and the single-season mark with 155.

She finished with 41 goals and eight assists,

scoring in 14 of the 17 games, and earned a spot on the All-BIG EAST first team. That was her second appearance on the first team, as she also garnered the honor in 2022 when she also was first-team IWLCA All-Region.

Masera, a recent 2024 graduate from Stony Brook, joins the Notre Dame program as an assistant coach after an outstanding four-year career with the Seawolves and a rookie season in the professional league with Athletes Unlimited.

Masera was a decorated midfielder in her four year career at Stony Brook.

She was a 2024 Tewaaraton finalist, the second player in program history, alongside former Notre Dame attacker and all-time Irish points leader, Jackie Wolak (2020-2024).

The two-time IWLCA, USA Lacrosse Magazine, and ILWomen All-American was the third pick in the AU Pro Lax Draft in April. Masera was also named the 2023 and 2024 CAA Midfielder of the Year and the 2022 America East Midfielder of the Year.

She finished her senior season as the fifth-best goal scorer in Division I (77) and finished second in points (117), also leading the nation as a senior in shots on goal and shots on goal per game. Masera finished her college career with 232 goals, 317 points, and a program record of 388 draw controls.



THE BIG THREE

The Irish graduated 17 seniors and graduate students a season ago, including three individuals in **Madison Ahern**, **Kasey Choma** and **Jackie Wolak**, who spent five years with the program, shattering numerous records during their tenure.

The trio combined for 964 career points over



2025 Notre Dame Women's Lacrosse

their five years together, the most of any teammates in program history.

Since their arrival to campus in 2020, Choma, Ahern and Wolak sat atop the team leaderboard in nearly every offensive category. Ahern's 60 goals in 2024 led the team while Choma had posted the team's top mark the four years prior.

During her career, Wolak never surrendered her title of assists leader and posted a team-best 100+ points in both 2023 and 2024. Ahern led the team in points during 2020 and 2022 while Wolak took the top spot in 2021.

All three rank among the program's single season goal leaders with Choma holding two spots at three and eight, Ahern holds the sixth and seventh all time spots and Wolak's 2024 total holds the 10th place.

Wolak also holds three of the top-10 spots for single season assists while the trio combine for four of the top-10 spots in total points for a given year.

Career leaders include Choma holding the top spot for games played (85) while Ahern and Wolak sit tied for second with 84. Choma and Ahern sit second and third respectively in all-time goals while Wolak holds the top-spot for assists (153). Ahern's 89 career assists ranks her fourth all-time. All three rank in the top-10 for career points: Wolak (1st; 341), Ahern (3rd; 317), Choma (5th; 306). The trio was also the first set of teammates to surpass 300 career points and are three of only five individuals in program history to hit 300+ points.

The three combine for 10 Inside Lacrosse/ILWomen All-American honors, 10 IWLCA All-Region/All-American honors, eight USA Lacrosse Magazine honors, and eight Tewaaraton watchlist candidiasis.

A 2024 Tewaaraton finalist, Wolak set the program record for career points (341) and assists (153). Her 110 points last season was also third-best in program history and set her apart from the rest as the only individual to record multiple 100+ point seasons at Notre Dame. Her 110 points finished atop the ACC last season and ranked fourth in the country.

In two NCAA Tournament games a season ago, Wolak's 18 points ranked among the best in the nation.

With six points in the first quarter of the team's NCAA First Round game vs. Coastal Carolina was a program best while her nine assists through three quarters played that day also set a program best.

The trio of Ahern, Wolak, and Choma scored in nearly every contest during their five years with Wolak's 78-game streak to end her career being a program record.

Wolak became the program's first-ever ACC Attacker of the Year honoree when she was named the conference's top attacker in 2024. As a freshman, Ahern earned National Rookie of the Year honors from Inside Lacrosse. Ahern was the 2023 ACC Postgraduate scholarship award recipient.



IRISH IN THE PROS

With the start of the WLL in 2025, it didn't take long for the Irish to get picked up.

Five Notre Dame Women's Lacrosse alums were all selected to the Boston Guard: **Madison Ahern ('24), Kasey Choma ('24), Jackie Wolak ('24), Hannah Dorney ('23), and Andie Aldave ('21).**



2025 Notre Dame Women's Lacrosse

TEAM AND INDIVIDUAL SUPERLATIVES

TEAM SUPERLATIVES

| Team Records at Home | |
|-------------------------------------|-------------------------------------|
| Most points in a home game | 39, vs. Pitt, 3/30/24 (26 G, 13 A) |
| Most goals in a home game | 27, vs. Detroit Mercy, 4/5/22 |
| Most assists in a home game | 16, vs. California, 2/28/16 |
| Most shots in a home game | 50, vs. Detroit Mercy, 2/11/17 |
| Most ground balls in a home game | 38, vs. Columbia, 4/22/00 |
| Most draw controls in a home game | 26, vs. Pitt, 3/30/24 |
| Fewest goals allowed in a home game | 0, vs. Kent State, 2/24/19 |
| | 0, vs. Villanova, 4/9/10 |
| Team Records on the Road | |
| Most points in a road game | 37, at Butler, 4/10/23 (26 G, 11 A) |
| Most goals in a road game | 26, at Butler, 4/10/23 |
| Most assists in a road game | 17, at Ohio State, 2/22/19 |
| Most shots in a road game | 49, at Duquesne, 2/14/09 |
| Most ground balls in a road game | 38, vs. Yale (Durham, NC), 4/15/00 |
| | 38, at California, 2/11/11 |
| Most draw controls in a road game | 23, at Ohio State, 2/22/19 |
| | 23, at Louisville, 4/18/24 |
| Fewest goals allowed in a road game | 1, at Loyola (MD), 3/25/07 |
| Team Season Records | |
| Most points in a season | 491, 2024 |
| Most goals in a season | 337, 2024 |
| Most assists in a season | 155, 2024 |
| Most shots in a season | 709, 2023 |
| Most ground balls in a season | 516, 2002 |
| Most draw controls in a season | 367, 2023 |
| Fewest goals allowed in a season | 113, 1997 |
| Largest margin of victory | |
| | 27, vs. Kent State, 2/24/19 |
| | 24, vs. Cincinnati, 2/12/14 |

INDIVIDUAL SUPERLATIVES

| Individual Records at Home | |
|------------------------------------|--|
| Most points in a home game | 12, Jillian Byers, 4/18/09 (7 G, 5 A, 12 P) |
| Most goals in a home game | 8, Courtney Fortunato, 3/14/15, vs. VT 8, Kasey Choma, 3/16/23, vs. VT |
| Most assists in a home game | 9, Jackie Wolak, 5/10/24, vs. Coastal Carolina (NCAA First Round) |
| Most saves in a home game | 20, Tara Durkin, 4/2/00, vs. Vanderbilt |
| Individual Records on the Road | |
| Most points in a road game | 12, Maddie Howe, 2/22/19, at Ohio State (6 G, 6 A, 12 P) |
| Most goals in a road game | 9, Crysti Foote, 2/24/06, at California |
| Most assists in a road game | 8, M. Tamasitis, 4/14/12, at Connecticut |
| Most saves in a road game | 22, Carol Dixon, 4/9/06, at Duke |
| Individual Records | |
| Most points in a game | 12, Maddie Howe, 2/22/19, at Ohio State (6 G, 6 A, 12 P) |
| | 12, Jillian Byers, 4/18/09 (7 G, 5 A, 12 P) |
| Most points in a quarter | 6, Jackie Wolak, first quarter, 5/10/24, vs. Coastal Carolina (NCAA First Round) |
| Most points in a half | 9, Jillian Byers, first half, 4/18/09 (5 G, 4 A, 9 P) |
| Most goals in a game | 9, Crysti Foote, 2/24/06, at California |
| Most goals in a half | 6, C. Fortunato, 1st half, 4/6/17, vs. Kenesaw St. |
| | 6, 2x, Danielle Shearer, 1st half, 4/27/03, vs. Rutgers |
| | 6, Courtney Calabrese, 1st half, 4/19/98, vs. Gannon |
| Most assists in a game | 9, Jackie Wolak, 5/10/24, vs. Coastal Carolina (NCAA First Round) |
| Most assists in a half | 5, Jackie Wolak, first half, 5/10/24, vs. Coastal Carolina (NCAA First Round) |
| | 5, 2x, M. Tamasitis, first half, 4/28/12, vs. Cincinnati |
| Most saves in a game | 22, Carol Dixon, 4/9/06, at Duke |
| Most ground balls in a game | 10, Holly Manthei, 4/25/98, vs. Harvard |
| Most draw controls in a game | 16, Kelly Denes, 3/30/24, vs. Pitt |
| | 16, Andie Aldave, 2/22/19, at Ohio State |
| Most wins in a season (goalkeeper) | 16, Lilly Callahan, 2024 |
| | 16, Erin Goodman, 2009 |
| Most caused turnovers in a game | 7, 2x, Barbara Sullivan, 3/13/16 |
| | 7, Shaylyn Blaney, 4/17/10 |
| Fastest goal/first half | :06, Cara Buchanan, at Davidson, 3/31/97 |
| Fastest goal/second half | :12, Kerry Callahan, at Fairfield, 3/11/97 |



2025 Notre Dame Women's Lacrosse

2025 COMBINED STATS

2025 Notre Dame Women's Lacrosse NOTRE DAME Combined Team Statistics All games (as of Apr 07, 2025)

| RECORD: | OVERALL | HOME | AWAY | NEUTRAL |
|----------------|---------|------|------|---------|
| ALL GAMES | 6-7 | 3-4 | 3-3 | 0-0 |
| CONFERENCE | 1-6 | 0-4 | 1-2 | 0-0 |
| NON-CONFERENCE | 5-1 | 3-0 | 2-1 | 0-0 |

| Date | Opponent | Score | Att. |
|----------|--------------------|---------|------|
| Feb 07 | at Northwestern | L 10-13 | 1253 |
| Feb 09 | CMU | w 20-7 | 244 |
| Feb 15 | EMU | w 17-7 | 201 |
| * Feb 22 | #19 CLEMSON | L 11-12 | 322 |
| Mar 02 | at Elon | w 8-4 | 321 |
| * Feb 28 | at Duke University | L 9-11 | 373 |
| * Mar 08 | #1 BC | L 9-15 | 300 |
| * Mar 13 | at California | w 15-8 | 55 |
| Mar 15 | at UC Davis Aggies | w 18-6 | 143 |
| Mar 19 | #23 HARVARD | w 8-6 | 164 |
| * Mar 23 | at #9 Syracuse | L 11-12 | 3622 |
| * Mar 30 | #2 UNC | L 3-14 | 403 |
| * Apr 05 | #10 STAN | L 7-8 | 363 |

| TEAM STATISTICS | ND | OPP |
|------------------------|---------|---------|
| SHOT STATISTICS | | |
| Goals-Shot attempts | 146-388 | 123-324 |
| Goals scored per game | 11.23 | 9.46 |
| Shot pct. | .376 | .380 |
| Shots on goal-Attempts | 274-388 | 233-324 |
| SOG pct. | .706 | .719 |
| Shots/Game | 29.8 | 24.9 |
| Assists | 64 | 74 |
| Free position Made-Att | 22-65 | 38-74 |
| Free position pct. | .338 | .514 |
| MAN-UP OPPORTUNITIES | | |
| Goals-Opportunities | 9-0 | 20-0 |
| Conversion Percent | .000 | .000 |
| GOAL BREAKDOWN | | |
| Total Goals | 146 | 123 |
| Man-up | 9 | 20 |
| Man-down | 1 | 2 |
| Free-position | 22 | 38 |
| Unassisted | 82 | 49 |
| Overtime | 0 | 0 |
| Goals scored average | 11.44 | 9.64 |
| GROUND BALLS | 197 | 169 |
| DRAW CONTROLS | 147 | 161 |
| TURNOVERS | 177 | 198 |
| CAUSED TURNOVERS | 123 | 98 |
| CLEARs | 234-249 | 221-243 |
| Clear Pct. | .940 | .909 |
| PENALTIES | | |
| Number | 0 | 0 |
| Minutes | 0:00 | 0:00 |
| SHOT CLOCK VIOLATIONS | 6 | 5 |
| ATTENDANCE | | |
| Total | 1997 | 5767 |
| Dates/Avg Per Date | 7/285 | 6/961 |
| Neutral Site #/Avg | 0/0 | |

| ## | PLAYER | GP | G | A | Pts | Sh | Up | Dn | GB | DC | TO | CT |
|-----------|-------------------|----|-----|----|-----|-----|----|----|-----|-----|-----|-----|
| 3 | Kathryn Morrissey | 13 | 20 | 15 | 35 | 60 | 1 | 0 | 6 | 7 | 31 | 4 |
| 16 | Kristen Shanahan | 12 | 23 | 11 | 34 | 58 | 2 | 0 | 10 | 16 | 17 | 2 |
| 27 | Madison Rassas | 12 | 29 | 4 | 33 | 76 | 2 | 0 | 5 | 33 | 16 | 5 |
| 12 | Emma Murphy | 13 | 17 | 4 | 21 | 48 | 0 | 0 | 7 | 1 | 21 | 3 |
| 22 | Kate Timarky | 13 | 20 | 0 | 20 | 54 | 2 | 0 | 12 | 0 | 9 | 5 |
| 17 | Angie Conley | 11 | 10 | 6 | 16 | 24 | 0 | 0 | 4 | 0 | 13 | 2 |
| 6 | Fran Frieri | 13 | 5 | 9 | 14 | 9 | 2 | 0 | 4 | 0 | 9 | 0 |
| 33 | Katie Mallaber | 10 | 7 | 4 | 11 | 26 | 0 | 1 | 1 | 0 | 8 | 0 |
| 9 | Meghan O'Hare | 13 | 4 | 4 | 8 | 12 | 0 | 0 | 19 | 30 | 2 | 16 |
| 44 | Wynter Jock | 10 | 3 | 5 | 8 | 6 | 0 | 0 | 0 | 0 | 10 | 2 |
| 14 | Franny O'Brien | 8 | 3 | 2 | 5 | 7 | 0 | 0 | 8 | 1 | 2 | 9 |
| 18 | Anna Kenney | 4 | 1 | 0 | 1 | 3 | 0 | 0 | 0 | 0 | 2 | 0 |
| 21 | Ava Kristynik | 10 | 1 | 0 | 1 | 2 | 0 | 0 | 0 | 41 | 1 | 0 |
| 15 | Shannon Earley | 13 | 1 | 0 | 1 | 1 | 0 | 0 | 7 | 7 | 2 | 6 |
| 4 | Ellie McClelland | 4 | 1 | 0 | 1 | 1 | 0 | 0 | 0 | 0 | 2 | 1 |
| 2 | Abigail Lyons | 13 | 0 | 0 | 0 | 1 | 0 | 0 | 16 | 2 | 5 | 21 |
| 55 | Carson Didden | 1 | 0 | 0 | 0 | 0 | 0 | 0 | 0 | 0 | 0 | 0 |
| 42 | Isabel Pithie | 13 | 0 | 0 | 0 | 0 | 0 | 0 | 31 | 0 | 2 | 1 |
| 41 | Lila O'Brien | 13 | 0 | 0 | 0 | 0 | 0 | 0 | 11 | 2 | 1 | 8 |
| 30 | Malie Follet | 4 | 0 | 0 | 0 | 0 | 0 | 0 | 1 | 0 | 0 | 0 |
| 28 | Sloane Ginevan | 13 | 0 | 0 | 0 | 0 | 0 | 0 | 16 | 0 | 2 | 3 |
| 24 | Ellie Noto | 8 | 0 | 0 | 0 | 0 | 0 | 0 | 1 | 0 | 2 | 2 |
| 19 | Hadley Keating | 1 | 0 | 0 | 0 | 0 | 0 | 0 | 0 | 0 | 0 | 0 |
| 13 | Julia Carr | 13 | 0 | 0 | 0 | 0 | 0 | 0 | 11 | 0 | 0 | 15 |
| 7 | Maeve Dwyer | 7 | 0 | 0 | 0 | 0 | 0 | 0 | 0 | 4 | 1 | 1 |
| 5 | Erin Hooper | 1 | 0 | 0 | 0 | 0 | 0 | 0 | 0 | 0 | 0 | 0 |
| 1 | Grace Weigand | 13 | 0 | 0 | 0 | 0 | 0 | 0 | 26 | 0 | 0 | 17 |
| 0 | Katherine Carr | 1 | 0 | 0 | 0 | 0 | 0 | 0 | 0 | 0 | 0 | 0 |
| Total | | 13 | 146 | 64 | 210 | 388 | 9 | 1 | 197 | 147 | 177 | 123 |
| Opponents | | 13 | 123 | 74 | 197 | 324 | 20 | 2 | 169 | 161 | 198 | 98 |

| ## | Goalie | GP | Min. | GA | GAAvg | Save | Pct | W-L-T |
|-----------|---------------|----|--------|-----|-------|------|------|-------|
| 42 | Isabel Pithie | 13 | 706:12 | 110 | 9.35 | 105 | .488 | 6-6-0 |
| 30 | Malie Follet | 4 | 59:29 | 13 | 13.11 | 5 | .278 | 0-1-0 |
| Total | | 13 | 765:41 | 123 | 9.64 | 110 | .472 | 6-7-0 |
| Opponents | | 13 | 765:41 | 146 | 11.44 | 128 | .467 | 7-6-0 |

| Goals by Period | 1st | 2nd | 3rd | 4th | Total |
|-----------------|-----|-----|-----|-----|-------|
| NOTRE DAME | 38 | 37 | 40 | 31 | 146 |
| Opponents | 39 | 30 | 27 | 27 | 123 |

| Saves by Period | 1st | 2nd | 3rd | 4th | Total |
|-----------------|-----|-----|-----|-----|-------|
| NOTRE DAME | 28 | 28 | 26 | 28 | 110 |
| Opponents | 43 | 30 | 29 | 26 | 128 |

| Shots by Period | 1st | 2nd | 3rd | 4th | Total |
|-----------------|-----|-----|-----|-----|-------|
| NOTRE DAME | 116 | 99 | 95 | 78 | 388 |
| Opponents | 80 | 86 | 81 | 77 | 324 |

| Shots on Goal | 1st | 2nd | 3rd | 4th | Total |
|---------------|-----|-----|-----|-----|-------|
| NOTRE DAME | 81 | 67 | 69 | 57 | 274 |
| Opponents | 67 | 58 | 53 | 55 | 233 |



2025 Notre Dame Women's Lacrosse 2025 LEADERS

2025 Notre Dame Women's Lacrosse NOTRE DAME Category Leaders All games (as of Apr 10, 2025)

| ## | Points | GP | G | A | Pts | Shots |
|----|-------------------|----|----|----|-----|-------|
| 3 | Kathryn Morrissey | 13 | 20 | 15 | 35 | 60 |
| 16 | Kristen Shanahan | 12 | 23 | 11 | 34 | 58 |
| 27 | Madison Rassas | 12 | 29 | 4 | 33 | 76 |
| 12 | Emma Murphy | 13 | 17 | 4 | 21 | 48 |
| 22 | Kate Timarky | 13 | 20 | 0 | 20 | 54 |

| ## | Goals | GP | G | A | Pts | Shots |
|----|-------------------|----|----|----|-----|-------|
| 27 | Madison Rassas | 12 | 29 | 4 | 33 | 76 |
| 16 | Kristen Shanahan | 12 | 23 | 11 | 34 | 58 |
| 22 | Kate Timarky | 13 | 20 | 0 | 20 | 54 |
| 3 | Kathryn Morrissey | 13 | 20 | 15 | 35 | 60 |
| 12 | Emma Murphy | 13 | 17 | 4 | 21 | 48 |

| ## | Assists | GP | G | A | Pts | Shots |
|----|-------------------|----|----|----|-----|-------|
| 3 | Kathryn Morrissey | 13 | 20 | 15 | 35 | 60 |
| 16 | Kristen Shanahan | 12 | 23 | 11 | 34 | 58 |
| 6 | Fran Frieri | 13 | 5 | 9 | 14 | 9 |
| 17 | Angie Conley | 11 | 10 | 6 | 16 | 24 |
| 44 | Wynter Jock | 10 | 3 | 5 | 8 | 6 |

| ## | Ground Balls | GP | No. |
|----|----------------|----|-----|
| 42 | Isabel Pithie | 13 | 31 |
| 1 | Grace Weigand | 13 | 26 |
| 9 | Meghan O'Hare | 13 | 19 |
| 2 | Abigail Lyons | 13 | 16 |
| 28 | Sloane Ginevan | 13 | 16 |

| ## | Draw Controls | GP | No. |
|----|-------------------|----|-----|
| 21 | Ava Kristynik | 10 | 41 |
| 27 | Madison Rassas | 12 | 33 |
| 9 | Meghan O'Hare | 13 | 30 |
| 16 | Kristen Shanahan | 12 | 16 |
| 3 | Kathryn Morrissey | 13 | 7 |

| ## | Man-Up Goals | GP | No. |
|----|-------------------|----|-----|
| 6 | Fran Frieri | 13 | 2 |
| 27 | Madison Rassas | 12 | 2 |
| 16 | Kristen Shanahan | 12 | 2 |
| 22 | Kate Timarky | 13 | 2 |
| 3 | Kathryn Morrissey | 13 | 1 |

| ## | Man-Down Goals | GP | No. |
|----|----------------|----|-----|
| 33 | Katie Mallaber | 10 | 1 |

| ## | Free-position Goals | GP | No. |
|----|---------------------|----|-----|
| 3 | Kathryn Morrissey | 13 | 4 |
| 22 | Kate Timarky | 13 | 4 |
| 27 | Madison Rassas | 12 | 4 |
| 16 | Kristen Shanahan | 12 | 3 |
| 12 | Emma Murphy | 13 | 2 |

| ## | Shots | GP | G | A | Shots | Shot% |
|----|-------------------|----|----|----|-------|-------|
| 27 | Madison Rassas | 12 | 29 | 4 | 76 | .382 |
| 3 | Kathryn Morrissey | 13 | 20 | 15 | 60 | .333 |
| 16 | Kristen Shanahan | 12 | 23 | 11 | 58 | .397 |
| 22 | Kate Timarky | 13 | 20 | 0 | 54 | .370 |
| 12 | Emma Murphy | 13 | 17 | 4 | 48 | .354 |

| ## | Shot Pct. | GP | G | A | Shots | Shot% |
|----|------------------|----|---|---|-------|-------|
| 15 | Shannon Earley | 13 | 1 | 0 | 1 | 1.000 |
| 4 | Ellie McClelland | 4 | 1 | 0 | 1 | 1.000 |
| 6 | Fran Frieri | 13 | 5 | 9 | 9 | .556 |
| 44 | Wynter Jock | 10 | 3 | 5 | 6 | .500 |
| 21 | Ava Kristynik | 10 | 1 | 0 | 2 | .500 |

| ## | Shots on Goal | GP | G | A | Shots | SOG | SOG% |
|----|-------------------|----|----|----|-------|-----|------|
| 27 | Madison Rassas | 12 | 29 | 4 | 76 | 55 | .724 |
| 3 | Kathryn Morrissey | 13 | 20 | 15 | 60 | 42 | .700 |
| 16 | Kristen Shanahan | 12 | 23 | 11 | 58 | 41 | .707 |
| 22 | Kate Timarky | 13 | 20 | 0 | 54 | 41 | .759 |
| 12 | Emma Murphy | 13 | 17 | 4 | 48 | 33 | .688 |

| ## | Shots on Goal Pct. | GP | G | A | Shots | SOG | SOG% |
|----|--------------------|----|----|---|-------|-----|-------|
| 4 | Ellie McClelland | 4 | 1 | 0 | 1 | 1 | 1.000 |
| 15 | Shannon Earley | 13 | 1 | 0 | 1 | 1 | 1.000 |
| 6 | Fran Frieri | 13 | 5 | 9 | 9 | 8 | .889 |
| 44 | Wynter Jock | 10 | 3 | 5 | 6 | 5 | .833 |
| 17 | Angie Conley | 11 | 10 | 6 | 24 | 19 | .792 |

| ## | Caused Turnovers | GP | No. |
|----|------------------|----|-----|
| 2 | Abigail Lyons | 13 | 21 |
| 1 | Grace Weigand | 13 | 17 |
| 9 | Meghan O'Hare | 13 | 16 |
| 13 | Julia Carr | 13 | 15 |
| 14 | Franny O'Brien | 8 | 9 |

| ## | Penalties | GP | No. |
|----|-----------|----|-----|
|----|-----------|----|-----|

| ## | Penalty Minutes | GP | No. |
|----|-----------------|----|-----|
|----|-----------------|----|-----|



2025 Notre Dame Women's Lacrosse

NCAA TEAM RANKINGS

NCAA Statistics

Notre Dame - 2024-25 Women's Lacrosse Ranking Summary thru games 04/07/2025

| Statistic | National Rank | Conference Rank | Value | National Leader | Value | Conference Leader | Value |
|--|---------------|-----------------|-------|--------------------------|----------|-------------------|-------|
| Assists Per Game (120 ranked) | 69 | 10 | 4.92 | Boston College | 9.79 | Boston College | 9.79 |
| Assists Per Game (0 ranked) | | | | | | | |
| Caused Turnovers Per Game (120 ranked) | 30 | 4 | 9.38 | Liberty | 17.62 | Clemson | 12.00 |
| Clearing Percentage (120 ranked) | 5 | 3 | 0.940 | North Carolina | 0.953 | North Carolina | 0.953 |
| Draw Control Percentage (120 ranked) | 81 | 10 | 0.477 | Loyola Maryland | 0.694 | Boston College | 0.622 |
| Draw Controls Per Game (120 ranked) | 106 | 11 | 11.31 | Loyola Maryland | 19.79 | Boston College | 17.14 |
| Face-Off Win Percentage (4 ranked) | | | | Dartmouth | 0.833 | | |
| Fouls Per Game (120 ranked) | 80 | 5 | 14.77 | La Salle | 3.58 | Boston College | 11.29 |
| Free Position Percentage (120 ranked) | | | | UAlbany | 0.632 | Syracuse | 0.538 |
| Ground Balls Per Game (120 ranked) | 82 | 6 | 15.08 | Liberty | 23.08 | Clemson | 19.73 |
| Points Per Game (120 ranked) | 74 | 9 | 16.15 | Boston College | 27.64 | Boston College | 27.64 |
| Red Cards (1 ranked) | | | | 7 teams tied | 1 | Boston College | 1 |
| Saves Percentage (120 ranked) | 18 | 3 | 0.472 | Boston College | 0.563 | Boston College | 0.563 |
| Scoring Defense (120 ranked) | 16 | 5 | 9.46 | North Carolina | 6.25 | North Carolina | 6.25 |
| Scoring Margin (64 ranked) | 45 | 8 | 1.77 | Boston College | 10.93 | Boston College | 10.93 |
| Scoring Offense (120 ranked) | 75 | 9 | 11.23 | Boston College | 17.86 | Boston College | 17.86 |
| Shot Percentage (120 ranked) | 107 | 11 | 0.376 | Furman | 0.510 | Boston College | 0.493 |
| Shots Per Game (120 ranked) | 42 | 6 | 29.85 | Princeton | 37.20 | Boston College | 36.21 |
| Shots on Goal Per Game (120 ranked) | 59 | 8 | 21.08 | North Carolina | 27.67 | North Carolina | 27.67 |
| Turnovers Per Game (120 ranked) | 31 | 5 | 13.69 | Butler | 10.50 | Boston College | 11.14 |
| Win Percentage (118 ranked) | 65 | 9 | 0.462 | North Carolina | 1.000 | North Carolina | 1.000 |
| Yellow Cards (116 ranked) | 40 | 6 | 25 | Monmouth UMass Lowell | 40 40 | Louisville | 32 |



2025 Notre Dame Women's Lacrosse

NCAA INDIVIDUAL RANKINGS

| Statistic | Player | National Rank | Conference Rank | Value | National Leader | Value | Conference Leader | Value |
|---|-------------------|---------------|-----------------|-------|---------------------------------|-------|--|--------------|
| Assists (137 ranked) | Kathryn Morrissey | 106 | 16 | 15 | Jordyn Behar, Arizona St. | 51 | Ashley Humphrey, North Carolina | 48 |
| Assists Per Game (150 ranked) | Kathryn Morrissey | 130 | 16 | 1.15 | Ashley Humphrey, North Carolina | 4.00 | Ashley Humphrey, North Carolina | 4.00 |
| Caused Turnovers Per Game (149 ranked) | Abigail Lyons | 63 | 7 | 1.54 | Reagan O'Brien, Johns Hopkins | 3.92 | Summer Agostino, Clemson | 2.80 |
| | Grace Weigand | 119 | 13 | 1.31 | | | | |
| | Meghan O'Hare | 136 | 15 | 1.23 | | | | |
| Draw Controls Per Game (149 ranked) | Ava Kristynik | 86 | 7 | 4.10 | Madison Epke, James Madison | 12.82 | Kate Galica, Virginia | 9.62 |
| Face-Off Win Percentage (7 ranked) | | | | | Madison Prielz, Robert Morris | 1.000 | | |
| Free Position Goals Per Game (146 ranked) | | | | | Emma Bllkshmi, Binghamton | 2.00 | Aliya Polisky, Stanford | 1.21 |
| | | | | | Madison Taylor, Northwestern | 2.00 | | |
| Free Position Percentage (150 ranked) | | | | | Anna McQuay, Mount St. Mary's | 0.846 | Aliya Polisky, Stanford | 0.739 |
| Goals (137 ranked) | Madison Rassas | 125 | 16 | 29 | Rachel Clark, Boston College | 64 | Rachel Clark, Boston College | 64 |
| | | | | | Madison Taylor, Northwestern | 64 | | |
| Goals Per Game (150 ranked) | Madison Rassas | 130 | 15 | 2.42 | McKenzie Blake, Princeton | 5.00 | Rachel Clark, Boston College | 4.57 |
| Goals-Against Average (113 ranked) | Isabel Pithie | 16 | 5 | 9.35 | Natalia Altebrando, Stony Brook | 6.60 | Shea Dolce, Boston College | 7.02 |
| Ground Balls Per Game (147 ranked) | Isabel Pithie | 64 | 5 | 2.38 | Sydney Huhtala, Niagara | 4.00 | Kennedy Everson, Duke Olivia Rose, Stanford | 2.79 2.79 |
| | Grace Weigand | 147 | 11 | 1.92 | | | | |
| Points (141 ranked) | | | | | Madison Taylor, Northwestern | 89 | Rachel Clark, Boston College | 80 |
| Points Per Game (150 ranked) | | | | | Madison Taylor, Northwestern | 6.85 | Rachel Clark, Boston College | 5.71 |
| Save Percentage (113 ranked) | Isabel Pithie | 15 | 3 | 0.488 | Shea Dolce, Boston College | 0.553 | Shea Dolce, Boston College | 0.553 |
| Saves (150 ranked) | Isabel Pithie | 37 | 6 | 105 | Lexie Coldiron, Rutgers | 148 | Daniella Guyette, Syracuse | 134 |
| | | | | | Katie Sullivan, Monmouth | 148 | | |
| Saves Per Game (113 ranked) | Isabel Pithie | 54 | 6 | 8.08 | Katie Sullivan, Monmouth | 12.33 | Aaliyah Jones, Virginia Tech | 10.17 |
| Shot Percentage (149 ranked) | | | | | Ava Connaughton, Massachusetts | 0.675 | Kaitlyn Giandonato, Pittsburgh | 0.675 |
| | | | | | Kaitlyn Giandonato, Pittsburgh | 0.675 | | |
| Shots Per Game (150 ranked) | Madison Rassas | 66 | 9 | 6.33 | Meg Bireley, Marquette | 10.54 | Rachel Clark, Boston College | 9.57 |
| Shots on Goal Per Game (150 ranked) | Madison Rassas | 70 | 7 | 4.58 | Meg Bireley, Marquette | 7.62 | Rachel Clark, Boston College | 6.93 |



2025 Notre Dame Women's Lacrosse CAREER STATISTICS

Individual Career History

Julia Carr

| Season | GP | G | A | Pts | Shots | Shot% | SOG | SOG% | UP | DN | GB | DC | TO | CT | Pen Min |
|--------|----|---|---|-----|-------|-------|-----|------|----|----|----|----|----|----|---------|
| 2022 | 5 | 0 | 0 | 0 | - | - | - | - | 0 | 0 | 0 | 0 | 0 | 1 | 0-0.0 |
| 2023 | 10 | 0 | 1 | 1 | - | - | - | - | 0 | 0 | 11 | 3 | 7 | 11 | 0-0.0 |
| 2024 | 3 | 0 | 0 | 0 | - | - | - | - | 0 | 0 | 1 | 0 | 0 | 1 | 0-0.0 |
| 2025 | 11 | 0 | 0 | 0 | - | - | - | - | 0 | 0 | 10 | 0 | 0 | 12 | 0-0.0 |
| TOTAL | 36 | 0 | 1 | 1 | - | - | - | - | 0 | 0 | 22 | 3 | 7 | 25 | 0-0.0 |

Katherine Carr

| Season | GP | G | A | Pts | Shots | Shot% | SOG | SOG% | UP | DN | GB | DC | TO | CT | Pen Min |
|--------|----|---|---|-----|-------|-------|-----|------|----|----|----|----|----|----|---------|
| 2025 | 1 | 0 | 0 | 0 | - | - | - | - | 0 | 0 | 0 | 0 | 0 | 0 | 0-0.0 |
| TOTAL | 1 | 0 | 0 | 0 | - | - | - | - | 0 | 0 | 0 | 0 | 0 | 0 | 0-0.0 |

Angle Conley

| Season | GP | G | A | Pts | Shots | Shot% | SOG | SOG% | UP | DN | GB | DC | TO | CT | Pen Min |
|--------|----|----|----|-----|-------|-------|-----|------|----|----|----|----|----|----|---------|
| 2024 | 11 | 7 | 5 | 12 | 13 | .500 | 11 | .846 | 1 | 0 | 1 | 2 | 3 | 0 | 0-0.0 |
| 2025 | 11 | 10 | 6 | 16 | 24 | .417 | 10 | .792 | 0 | 0 | 4 | 0 | 13 | 2 | 0-0.0 |
| TOTAL | 22 | 17 | 11 | 28 | 37 | .459 | 20 | .811 | 1 | 0 | 5 | 2 | 16 | 2 | 0-0.0 |

Carson Didden

| Season | GP | G | A | Pts | Shots | Shot% | SOG | SOG% | UP | DN | GB | DC | TO | CT | Pen Min |
|--------|----|---|---|-----|-------|-------|-----|------|----|----|----|----|----|----|---------|
| 2025 | 1 | 0 | 0 | 0 | - | - | - | - | 0 | 0 | 0 | 0 | 0 | 0 | 0-0.0 |
| TOTAL | 1 | 0 | 0 | 0 | - | - | - | - | 0 | 0 | 0 | 0 | 0 | 0 | 0-0.0 |

Maeve Dwyer

| Season | GP | G | A | Pts | Shots | Shot% | SOG | SOG% | UP | DN | GB | DC | TO | CT | Pen Min |
|--------|----|---|---|-----|-------|-------|-----|------|----|----|----|----|----|----|---------|
| 2023 | 7 | 0 | 0 | 0 | - | - | - | - | 0 | 0 | 0 | 0 | 1 | 1 | 0-0.0 |
| 2024 | 10 | 3 | 0 | 3 | 6 | .375 | 4 | .500 | 1 | 0 | 2 | 1 | 2 | 1 | 0-0.0 |
| 2025 | 5 | 0 | 0 | 0 | - | - | - | - | 0 | 0 | 0 | 3 | 1 | 0 | 0-0.0 |
| TOTAL | 22 | 3 | 0 | 3 | 6 | .375 | 4 | .500 | 1 | 0 | 2 | 4 | 4 | 2 | 0-0.0 |

Shannon Earley

| Season | GP | G | A | Pts | Shots | Shot% | SOG | SOG% | UP | DN | GB | DC | TO | CT | Pen Min |
|--------|----|---|---|-----|-------|-------|-----|-------|----|----|----|----|----|----|---------|
| 2025 | 11 | 1 | 0 | 1 | 1 | 1.000 | 1 | 1.000 | 0 | 0 | 7 | 7 | 1 | 5 | 0-0.0 |
| TOTAL | 11 | 1 | 0 | 1 | 1 | 1.000 | 1 | 1.000 | 0 | 0 | 7 | 7 | 1 | 5 | 0-0.0 |

Lilly Eccles

| Season | GP | G | A | Pts | Shots | Shot% | SOG | SOG% | UP | DN | GB | DC | TO | CT | Pen Min |
|--------|----|---|---|-----|-------|-------|-----|------|----|----|----|----|----|----|---------|
| 2024 | 4 | 0 | 0 | 0 | - | - | - | - | 0 | 0 | 1 | 0 | 0 | 0 | 0-0.0 |
| TOTAL | 4 | 0 | 0 | 0 | - | - | - | - | 0 | 0 | 1 | 0 | 0 | 0 | 0-0.0 |



2025 Notre Dame Women's Lacrosse CAREER STATISTICS

Individual Career History

Mallie Follet

| Season | GP | G | A | Pts | Shots | Shot% | SOG | SOG% | UP | DN | GB | DC | TO | CT | Pen/Min |
|--------|----|---|---|-----|-------|-------|-----|------|----|----|----|----|----|----|---------|
| 2023 | 7 | 0 | 0 | 0 | - | - | - | - | 0 | 0 | 0 | 0 | 0 | 0 | 0-0.0 |
| 2025 | 3 | 0 | 0 | 0 | - | - | - | - | 0 | 0 | 1 | 0 | 0 | 0 | 0-0.0 |
| TOTAL | 10 | 0 | 0 | 0 | - | - | - | - | 0 | 0 | 1 | 0 | 0 | 0 | 0-0.0 |

| Goalie | GP | Minutes | GA | GA/Avg | Saves | Save% | W | L | T | Sho |
|--------|----|---------|----|--------|-------|-------|---|---|---|-----|
| 2023 | 7 | 65:17 | 16 | 13.76 | 5 | .238 | 0 | 0 | 0 | 0 |
| 2025 | 3 | 58:18 | 13 | 13.27 | 4 | .235 | 0 | 1 | 0 | 0 |
| TOTAL | 10 | 120:35 | 29 | 10.50 | 9 | .207 | 0 | 1 | 0 | 0 |

Fran Frierl

| Season | GP | G | A | Pts | Shots | Shot% | SOG | SOG% | UP | DN | GB | DC | TO | CT | Pen/Min |
|--------|----|----|----|-----|-------|-------|-----|------|----|----|----|----|----|----|---------|
| 2023 | 9 | 4 | 0 | 4 | 0 | .000 | 7 | .075 | 1 | 0 | 2 | 0 | 6 | 1 | 0-0.0 |
| 2024 | 4 | 4 | 4 | 8 | 11 | .364 | 7 | .636 | 2 | 0 | 5 | 0 | 2 | 3 | 0-0.0 |
| 2025 | 11 | 5 | 8 | 13 | 7 | .714 | 6 | .857 | 2 | 0 | 2 | 0 | 8 | 0 | 0-0.0 |
| TOTAL | 24 | 13 | 12 | 25 | 18 | .500 | 20 | .769 | 5 | 0 | 9 | 0 | 16 | 4 | 0-0.0 |

Avery Gawronski

Sloana Ginavan

| Season | GP | G | A | Pts | Shots | Shot% | SOG | SOG% | UP | DN | GB | DC | TO | CT | Pen/Min |
|--------|----|---|---|-----|-------|-------|-----|------|----|----|----|----|----|----|---------|
| 2025 | 11 | 0 | 0 | 0 | - | - | - | - | 0 | 0 | 13 | 0 | 2 | 2 | 0-0.0 |
| TOTAL | 11 | 0 | 0 | 0 | - | - | - | - | 0 | 0 | 13 | 0 | 2 | 2 | 0-0.0 |

Erin Hooper

| Season | GP | G | A | Pts | Shots | Shot% | SOG | SOG% | UP | DN | GB | DC | TO | CT | Pen/Min |
|--------|----|---|---|-----|-------|-------|-----|------|----|----|----|----|----|----|---------|
| 2024 | 2 | 0 | 0 | 0 | - | - | - | - | 0 | 0 | 0 | 0 | 0 | 0 | 0-0.0 |
| 2025 | 1 | 0 | 0 | 0 | - | - | - | - | 0 | 0 | 0 | 0 | 0 | 0 | 0-0.0 |
| TOTAL | 3 | 0 | 0 | 0 | - | - | - | - | 0 | 0 | 0 | 0 | 0 | 0 | 0-0.0 |

Wynter Jock

| Season | GP | G | A | Pts | Shots | Shot% | SOG | SOG% | UP | DN | GB | DC | TO | CT | Pen/Min |
|--------|----|---|---|-----|-------|-------|-----|------|----|----|----|----|----|----|---------|
| 2025 | 10 | 3 | 5 | 6 | 6 | .500 | 5 | .833 | 0 | 0 | 0 | 0 | 10 | 2 | 0-0.0 |
| TOTAL | 10 | 3 | 5 | 6 | 6 | .500 | 5 | .833 | 0 | 0 | 0 | 0 | 10 | 2 | 0-0.0 |



2025 Notre Dame Women's Lacrosse CAREER STATISTICS

Individual Career History

Hadley Keating

| Season | GP | G | A | Pts | Shots | Shot% | SOG | SOG% | UP | DN | GB | DC | TO | CT | Pen-Min |
|--------|----|---|---|-----|-------|-------|-----|------|----|----|----|----|----|----|---------|
| 2025 | 1 | 0 | 0 | 0 | - | - | - | - | 0 | 0 | 0 | 0 | 0 | 0 | 0-0.0 |
| TOTAL | 1 | 0 | 0 | 0 | - | - | - | - | 0 | 0 | 0 | 0 | 0 | 0 | 0-0.0 |

Anna Kenney

| Season | GP | G | A | Pts | Shots | Shot% | SOG | SOG% | UP | DN | GB | DC | TO | CT | Pen-Min |
|--------|----|---|---|-----|-------|-------|-----|-------|----|----|----|----|----|----|---------|
| 2023 | 10 | 7 | 0 | 7 | 12 | .583 | 12 | 1.000 | 0 | 0 | 3 | 3 | 3 | 1 | 0-0.0 |
| 2025 | 4 | 1 | 0 | 1 | 3 | .333 | 2 | .667 | 0 | 0 | 0 | 0 | 2 | 0 | 0-0.0 |
| TOTAL | 14 | 8 | 0 | 8 | 15 | .533 | 14 | .933 | 0 | 0 | 3 | 3 | 5 | 1 | 0-0.0 |

Ava Kristynik

| Season | GP | G | A | Pts | Shots | Shot% | SOG | SOG% | UP | DN | GB | DC | TO | CT | Pen-Min |
|--------|----|---|---|-----|-------|-------|-----|------|----|----|----|----|----|----|---------|
| 2022 | 10 | 3 | 0 | 3 | 7 | .429 | 4 | .571 | 0 | 0 | 0 | 10 | 2 | 0 | 0-0.0 |
| 2023 | 9 | 2 | 2 | 4 | 8 | .250 | 4 | .500 | 0 | 0 | 1 | 0 | 1 | 0 | 0-0.0 |
| 2025 | 8 | 1 | 0 | 1 | 2 | .500 | 1 | .500 | 0 | 0 | 0 | 32 | 1 | 0 | 0-0.0 |
| TOTAL | 27 | 6 | 2 | 8 | 17 | .353 | 9 | .529 | 0 | 0 | 1 | 42 | 4 | 0 | 0-0.0 |

Kiki Liebezeit

Abigail Lyons

| Season | GP | G | A | Pts | Shots | Shot% | SOG | SOG% | UP | DN | GB | DC | TO | CT | Pen-Min |
|--------|----|---|---|-----|-------|-------|-----|------|----|----|----|----|----|----|---------|
| 2023 | 12 | 0 | 0 | 0 | - | - | - | - | 0 | 0 | 6 | 0 | 2 | 2 | 0-0.0 |
| 2024 | 20 | 0 | 0 | 0 | - | - | - | - | 0 | 0 | 40 | 1 | 6 | 22 | 0-0.0 |
| 2025 | 11 | 0 | 0 | 0 | - | - | - | - | 0 | 0 | 14 | 2 | 4 | 20 | 0-0.0 |
| TOTAL | 43 | 0 | 0 | 0 | - | - | - | - | 0 | 0 | 60 | 3 | 12 | 44 | 0-0.0 |

Katie Mallaber

| Season | GP | G | A | Pts | Shots | Shot% | SOG | SOG% | UP | DN | GB | DC | TO | CT | Pen-Min |
|--------|----|---|---|-----|-------|-------|-----|------|----|----|----|----|----|----|---------|
| 2025 | 8 | 5 | 3 | 8 | 18 | .278 | 9 | .500 | 0 | 1 | 1 | 0 | 5 | 0 | 0-0.0 |
| TOTAL | 8 | 5 | 3 | 8 | 18 | .278 | 9 | .500 | 0 | 1 | 1 | 0 | 5 | 0 | 0-0.0 |

Ellie McClelland

| Season | GP | G | A | Pts | Shots | Shot% | SOG | SOG% | UP | DN | GB | DC | TO | CT | Pen-Min |
|--------|----|---|---|-----|-------|-------|-----|-------|----|----|----|----|----|----|---------|
| 2025 | 4 | 1 | 0 | 1 | 1 | 1.000 | 1 | 1.000 | 0 | 0 | 0 | 0 | 2 | 1 | 0-0.0 |
| TOTAL | 4 | 1 | 0 | 1 | 1 | 1.000 | 1 | 1.000 | 0 | 0 | 0 | 0 | 2 | 1 | 0-0.0 |

Kathryn Morrissey

| Season | GP | G | A | Pts | Shots | Shot% | SOG | SOG% | UP | DN | GB | DC | TO | CT | Pen-Min |
|--------|----|----|----|-----|-------|-------|-----|------|----|----|----|----|----|----|---------|
| 2024 | 20 | 23 | 3 | 26 | 38 | .605 | 29 | .763 | 4 | 0 | 5 | 4 | 7 | 0 | 0-0.0 |
| 2025 | 11 | 18 | 12 | 30 | 50 | .360 | 35 | .700 | 1 | 0 | 5 | 7 | 24 | 4 | 0-0.0 |
| TOTAL | 31 | 41 | 15 | 56 | 88 | .466 | 64 | .727 | 5 | 0 | 10 | 11 | 31 | 4 | 0-0.0 |



2025 Notre Dame Women's Lacrosse CAREER STATISTICS

Individual Career History

Emma Murphy

| Season | GP | G | A | Pts | Shots | Shot% | SOG | SOG% | UP | DN | GB | DC | TO | CT | Pen-Min |
|--------|----|----|---|-----|-------|-------|-----|------|----|----|----|----|----|----|---------|
| 2023 | 4 | 0 | 0 | 0 | 3 | .000 | 2 | .667 | 0 | 0 | 0 | 0 | 1 | 0 | 0-0.0 |
| 2025 | 11 | 17 | 4 | 21 | 43 | .395 | 30 | .698 | 0 | 0 | 7 | 1 | 14 | 3 | 0-0.0 |
| TOTAL | 15 | 17 | 4 | 21 | 46 | .370 | 32 | .696 | 0 | 0 | 7 | 1 | 15 | 3 | 0-0.0 |

Ellie Noto

| Season | GP | G | A | Pts | Shots | Shot% | SOG | SOG% | UP | DN | GB | DC | TO | CT | Pen-Min |
|--------|----|---|---|-----|-------|-------|-----|------|----|----|----|----|----|----|---------|
| 2023 | 4 | 0 | 0 | 0 | - | - | - | - | 0 | 0 | 0 | 0 | 0 | 0 | 0-0.0 |
| 2024 | 8 | 0 | 0 | 0 | - | - | - | - | 0 | 0 | 1 | 0 | 1 | 0 | 0-0.0 |
| 2025 | 7 | 0 | 0 | 0 | - | - | - | - | 0 | 0 | 1 | 0 | 2 | 2 | 0-0.0 |
| TOTAL | 19 | 0 | 0 | 0 | - | - | - | - | 0 | 0 | 2 | 0 | 3 | 2 | 0-0.0 |

Franny O'Brien

| Season | GP | G | A | Pts | Shots | Shot% | SOG | SOG% | UP | DN | GB | DC | TO | CT | Pen-Min |
|--------|----|---|---|-----|-------|-------|-----|-------|----|----|----|----|----|----|---------|
| 2023 | 9 | 4 | 0 | 4 | 5 | .800 | 5 | 1.000 | 0 | 0 | 4 | 2 | 1 | 2 | 0-0.0 |
| 2024 | 17 | 2 | 1 | 3 | 9 | .222 | 5 | .556 | 0 | 0 | 8 | 4 | 5 | 3 | 0-0.0 |
| 2025 | 6 | 3 | 1 | 4 | 7 | .429 | 5 | .714 | 0 | 0 | 6 | 1 | 1 | 3 | 0-0.0 |
| TOTAL | 32 | 9 | 2 | 11 | 21 | .429 | 15 | .714 | 0 | 0 | 18 | 7 | 7 | 8 | 0-0.0 |

Lila O'Brien

| Season | GP | G | A | Pts | Shots | Shot% | SOG | SOG% | UP | DN | GB | DC | TO | CT | Pen-Min |
|--------|----|---|---|-----|-------|-------|-----|------|----|----|----|----|----|----|---------|
| 2025 | 11 | 0 | 0 | 0 | - | - | - | - | 0 | 0 | 7 | 1 | 1 | 8 | 0-0.0 |
| TOTAL | 11 | 0 | 0 | 0 | - | - | - | - | 0 | 0 | 7 | 1 | 1 | 8 | 0-0.0 |

Meghan O'Hare

| Season | GP | G | A | Pts | Shots | Shot% | SOG | SOG% | UP | DN | GB | DC | TO | CT | Pen-Min |
|--------|----|----|---|-----|-------|-------|-----|------|----|----|----|----|----|----|---------|
| 2024 | 20 | 10 | 0 | 10 | 25 | .400 | 22 | .880 | 0 | 0 | 13 | 30 | 6 | 8 | 0-0.0 |
| 2025 | 11 | 1 | 4 | 5 | 7 | .143 | 4 | .571 | 0 | 0 | 18 | 27 | 2 | 15 | 0-0.0 |
| TOTAL | 31 | 11 | 4 | 15 | 32 | .344 | 26 | .812 | 0 | 0 | 31 | 57 | 8 | 23 | 0-0.0 |

Isabel Pithie

| Season | GP | G | A | Pts | Shots | Shot% | SOG | SOG% | UP | DN | GB | DC | TO | CT | Pen-Min |
|--------|----|---|---|-----|-------|-------|-----|------|----|----|----|----|----|----|---------|
| 2022 | 2 | 0 | 0 | 0 | - | - | - | - | 0 | 0 | 0 | 0 | 0 | 0 | 0-0.0 |
| 2024 | 8 | 0 | 0 | 0 | - | - | - | - | 0 | 0 | 4 | 0 | 0 | 0 | 0-0.0 |
| 2025 | 11 | 0 | 0 | 0 | - | - | - | - | 0 | 0 | 26 | 0 | 1 | 0 | 0-0.0 |
| TOTAL | 21 | 0 | 0 | 0 | - | - | - | - | 0 | 0 | 30 | 0 | 1 | 0 | 0-0.0 |

| Goalie | GP | Minutes | GA | GAAvg | Saves | Save% | W | L | T | Sho |
|--------|----|---------|-----|-------|-------|-------|---|---|---|-----|
| 2022 | 2 | 14:26 | 3 | 12.47 | 2 | .400 | 0 | 0 | 0 | 0 |
| 2024 | 8 | 102:44 | 11 | 6.42 | 10 | .476 | 0 | 0 | 0 | 0 |
| 2025 | 11 | 601:12 | 88 | 8.78 | 92 | .511 | 6 | 4 | 0 | 0 |
| TOTAL | 21 | 718:22 | 102 | 8.52 | 104 | .505 | 6 | 4 | 0 | 0 |



2025 Notre Dame Women's Lacrosse CAREER STATISTICS

Individual Career History

Madison Rassas

| Season | GP | G | A | Pts | Shots | Shot% | SOG | SOG% | UP | DN | GB | DC | TO | CT | Pen-Min |
|--------|----|----|---|-----|-------|-------|-----|------|----|----|----|----|----|----|---------|
| 2025 | 11 | 29 | 4 | 33 | 74 | .392 | 53 | .716 | 2 | 0 | 5 | 32 | 15 | 4 | 0-0.0 |
| TOTAL | 11 | 29 | 4 | 33 | 74 | .392 | 53 | .716 | 2 | 0 | 5 | 32 | 15 | 4 | 0-0.0 |

Kristen Shanahan

| Season | GP | G | A | Pts | Shots | Shot% | SOG | SOG% | UP | DN | GB | DC | TO | CT | Pen-Min |
|--------|----|----|----|-----|-------|-------|-----|------|----|----|----|----|----|----|---------|
| 2022 | 8 | 1 | 1 | 2 | 4 | .250 | 2 | .500 | 0 | 0 | 1 | 8 | 1 | 0 | 0-0.0 |
| 2023 | 21 | 25 | 4 | 29 | 71 | .352 | 46 | .648 | 3 | 1 | 14 | 1 | 14 | 6 | 0-0.0 |
| 2025 | 10 | 21 | 10 | 31 | 49 | .429 | 35 | .714 | 2 | 0 | 9 | 16 | 16 | 2 | 0-0.0 |
| TOTAL | 39 | 47 | 15 | 62 | 124 | .379 | 83 | .669 | 5 | 1 | 24 | 25 | 31 | 8 | 0-0.0 |

Kate Timarky

| Season | GP | G | A | Pts | Shots | Shot% | SOG | SOG% | UP | DN | GB | DC | TO | CT | Pen-Min |
|--------|----|----|---|-----|-------|-------|-----|------|----|----|----|----|----|----|---------|
| 2024 | 16 | 8 | 0 | 8 | 24 | .333 | 19 | .792 | 1 | 0 | 5 | 0 | 3 | 0 | 0-0.0 |
| 2025 | 11 | 19 | 0 | 19 | 51 | .373 | 39 | .765 | 2 | 0 | 11 | 0 | 7 | 5 | 0-0.0 |
| TOTAL | 27 | 27 | 0 | 27 | 75 | .360 | 58 | .773 | 3 | 0 | 16 | 0 | 10 | 5 | 0-0.0 |

Grace Weigand

| Season | GP | G | A | Pts | Shots | Shot% | SOG | SOG% | UP | DN | GB | DC | TO | CT | Pen-Min |
|--------|----|---|---|-----|-------|-------|-----|------|----|----|----|----|----|----|---------|
| 2022 | 18 | 0 | 2 | 2 | - | - | - | - | 0 | 0 | 12 | 10 | 9 | 9 | 0-0.0 |
| 2023 | 21 | 0 | 0 | 0 | - | - | - | - | 0 | 0 | 29 | 2 | 6 | 17 | 0-0.0 |
| 2024 | 20 | 0 | 0 | 0 | - | - | - | - | 0 | 0 | 24 | 0 | 4 | 17 | 0-0.0 |
| 2025 | 11 | 0 | 0 | 0 | - | - | - | - | 0 | 0 | 21 | 0 | 0 | 14 | 0-0.0 |
| TOTAL | 70 | 0 | 2 | 2 | - | - | - | - | 0 | 0 | 86 | 12 | 19 | 57 | 0-0.0 |



2025 Notre Dame Women's Lacrosse

0



Katherine Carr
Freshman
Midfield/Draw Specialist
5-9
Rockville, Md.
Stone Ridge School of the
Sacred Heart

| 2025 | G-A-P | Sh | SOG | GB | DC | CT | SEASON HIGHS |
|----------------------|-------|----|-----|----|----|----|----------------------------|
| at Northwestern | 0-0-0 | 0 | 0 | 0 | 0 | 0 | Gls: |
| vs. Central Michigan | 0-0-0 | 0 | 0 | 0 | 0 | 0 | Assts: |
| vs. Eastern Michigan | 0-0-0 | 0 | 0 | 0 | 0 | 0 | Pts: |
| vs. Clemson | 0-0-0 | 0 | 0 | 0 | 0 | 0 | DC: |
| at Duke | 0-0-0 | 0 | 0 | 0 | 0 | 0 | CT: |
| at Elon | 0-0-0 | 0 | 0 | 0 | 0 | 0 | GB: |
| vs. Boston College | 0-0-0 | 0 | 0 | 0 | 0 | 0 | CAREER HIGHS |
| at Cal | 0-0-0 | 0 | 0 | 0 | 0 | 0 | Gls: |
| at UC Davis | 0-0-0 | 0 | 0 | 0 | 0 | 0 | Assts: |
| vs. Harvard | 0-0-0 | 0 | 0 | 0 | 0 | 0 | Pts: |
| at Syracuse | 0-0-0 | 0 | 0 | 0 | 0 | 0 | DC: |
| vs. North Carolina | 0-0-0 | 0 | 0 | 0 | 0 | 0 | CT: |
| vs. Stanford | 0-0-0 | 0 | 0 | 0 | 0 | 0 | GB: |
| at Pitt | 0-0-0 | 0 | 0 | 0 | 0 | 0 | HONORS & AWARDS |
| vs. Louisville | 0-0-0 | 0 | 0 | 0 | 0 | 0 | |
| TOTAL | | | | | | | |
| * - started game | | | | | | | |

1



Grace Weigand
Senior
Defense
5-7
Denver, CO
Regis Jesuit High School

| 2025 | G-A-P | Sh | SOG | GB | DC | CT | SEASON HIGHS |
|------------------------------|-------|----|-----|----|----|----|---|
| *at Northwestern | 0-0-0 | 0 | 0 | 2 | 0 | 2 | Gls: |
| *vs. Central Michigan | 0-0-0 | 0 | 0 | 3 | 0 | 1 | Assts: |
| *vs. Eastern Michigan | 0-0-0 | 0 | 0 | 2 | 0 | 1 | Pts: |
| *vs. Clemson | 0-0-0 | 0 | 0 | 2 | 0 | 2 | DC: |
| *at Duke | 0-0-0 | 0 | 0 | 1 | 0 | 1 | CT: 2, 5x vs. Stanford (4/5/25) |
| *at Elon | 0-0-0 | 0 | 0 | 0 | 0 | 0 | GB: 4 vs Harvard (3/19/25) |
| *vs. Boston College | 0-0-0 | 0 | 0 | 2 | 0 | 1 | CAREER HIGHS |
| *at Cal | 0-0-0 | 0 | 0 | 0 | 0 | 0 | Gls: |
| *at UC Davis | 0-0-0 | 0 | 0 | 2 | 0 | 2 | Assts: |
| *vs. Harvard | 0-0-0 | 0 | 0 | 4 | 0 | 2 | Pts: |
| *at Syracuse | 0-0-0 | 0 | 0 | 3 | 0 | 2 | DC: 4, vs Central Michigan (02/11/22) |
| *vs. North Carolina | 0-0-0 | 0 | 0 | 2 | 0 | 1 | CT: 2, 9x vs. Stanford (4/5/25) |
| *vs. Stanford | 0-0-0 | 0 | 0 | 3 | 0 | 2 | GBs: 4, 4x, vs Harvard (3/19/25) |
| at Pitt | 0-0-0 | 0 | 0 | 0 | 0 | 0 | HONORS & AWARDS |
| vs. Louisville | 0-0-0 | 0 | 0 | 0 | 0 | 0 | • 2025 Tewaaraton Watch |
| TOTAL | | | | | | | • USA Lacrosse Magazine Preseason All-American Honorable Mention |
| * - started game | | | | | | | |
| • 2022 ACC All-Freshman Team | | | | | | | |

2



Abigail Lyons
Junior
Defense
5-5
Carle Place, NY
Carle Place

| 2025 | G-A-P | Sh | SOG | GB | DC | CT | SEASON HIGHS |
|-----------------------|-------|----|-----|----|----|----|---|
| *at Northwestern | 0-0-0 | 0 | 0 | 3 | 0 | 3 | Gls: |
| *vs. Central Michigan | 0-0-0 | 0 | 0 | 0 | 0 | 0 | Assts: |
| *vs. Eastern Michigan | 0-0-0 | 0 | 0 | 2 | 0 | 2 | Pts: |
| *vs. Clemson | 0-0-0 | 0 | 0 | 2 | 0 | 2 | DC: 2 at Cal (3/13/25) |
| *at Duke | 0-0-0 | 0 | 0 | 2 | 0 | 2 | CT: 4 vs. Boston College (3/8/25) |
| *at Elon | 0-0-0 | 0 | 0 | 1 | 0 | 2 | GB: 3 at Northwestern (2/7/25) |
| *vs. Boston College | 0-0-0 | 0 | 0 | 1 | 0 | 4 | CAREER HIGHS |
| *at Cal | 0-0-0 | 0 | 0 | 0 | 2 | 1 | Gls: |
| *at UC Davis | 0-0-0 | 0 | 0 | 2 | 0 | 2 | Assts: |
| *vs. Harvard | 0-0-0 | 0 | 0 | 0 | 0 | 1 | Pts: |
| *at Syracuse | 0-0-0 | 0 | 0 | 1 | 0 | 1 | DC: 2 at Cal (3/13/25) |
| *vs. North Carolina | 0-0-0 | 0 | 0 | 0 | 0 | 0 | CT: 4 vs. Boston College (3/8/25) |
| *vs. Stanford | 0-0-0 | 1 | 0 | 2 | 0 | 1 | GB: 3 at Northwestern (2/7/25) |
| at Pitt | 0-0-0 | 0 | 0 | 0 | 0 | 0 | HONORS & AWARDS |
| vs. Louisville | 0-0-0 | 0 | 0 | 0 | 0 | 0 | |
| TOTAL | | | | | | | |
| * - started game | | | | | | | |



2025 Notre Dame Women's Lacrosse

3



Kathryn Morrissey

Sophomore
Midfield

5-8

Skaneateles, NY
Skaneateles High School

| 2025 | G-A-P | Sh | SOG | GB | DC | CT | SEASON HIGHS |
|-----------------------|-------|----|-----|----|----|----|--|
| *at #2 Northwestern | 3-0-3 | 4 | 4 | 1 | 1 | 0 | Gls: 4 at Cal (3/13/25) |
| *vs. Central Michigan | 2-0-2 | 6 | 4 | 1 | 3 | 2 | Assts: 4 at Syracuse (3/23/25) |
| *vs. Eastern Michigan | 0-0-0 | 0 | 0 | 0 | 0 | 0 | Pts: 6 at Cal (3/13/25) |
| *vs. Clemson | 1-2-3 | 4 | 2 | 1 | 1 | 0 | DC: 3 vs. Central Michigan (2/9/24) |
| *at Duke | 2-0-2 | 9 | 6 | 0 | 0 | 0 | CT: |
| *at Elon | 2-1-3 | 2 | 2 | 0 | 0 | 1 | GB: 1, 3x, vs. Boston College (3/8/25) |
| *vs. Boston College | 2-2-4 | 4 | 4 | 1 | 1 | 1 | CAREER HIGH |
| *at Cal | 4-2-6 | 8 | 6 | 1 | 0 | 0 | Gls: 4 at Cal (3/13/25) |
| *at UC Davis | 0-0-0 | 4 | 1 | 0 | 0 | 1 | Assts: 4 at Syracuse (3/23/25) |
| *vs. Harvard | 1-1-2 | 5 | 4 | 0 | 1 | 0 | Pts: 6 at Cal (3/13/25) |
| *at Syracuse | 1-4-5 | 4 | 2 | 0 | 0 | 0 | DC: 1 at Northwestern (2/7/25) |
| *vs. North Carolina | 0-1-1 | 4 | 3 | 0 | 0 | 0 | CT: |
| *vs. Stanford | 2-2-4 | 6 | 4 | 1 | 0 | 0 | GB: 1, 4x, vs. Boston College (3/8/25) |
| at Pitt | 0-0-0 | 0 | 0 | 0 | 0 | 0 | |
| vs. Louisville | 0-0-0 | 0 | 0 | 0 | 0 | 0 | |
| TOTAL | | | | | | | HONORS & AWARDS |
| * - started game | | | | | | | |

4



Ellie McClelland

Freshman
Midfield

5-4

New Albany, OH
New Albany High School

| 2025 | G-A-P | Sh | SOG | GB | DC | CT | SEASON HIGHS |
|-----------------------|-------|----|-----|----|----|----|--|
| at Northwestern | 0-0-0 | 0 | 0 | 0 | 0 | 0 | Gls: 1 vs. Central Michigan (2/9/25) |
| *vs. Central Michigan | 1-0-1 | 1 | 1 | 0 | 0 | 1 | Assts: |
| vs. Eastern Michigan | 0-0-0 | 0 | 0 | 0 | 0 | 0 | Pts: 1 vs. Central Michigan (2/9/25) |
| vs. Clemson | 0-0-0 | 0 | 0 | 0 | 0 | 0 | DC: |
| at Duke | 0-0-0 | 0 | 0 | 0 | 0 | 0 | CT: 1 vs. Central Michigan (2/9/25) |
| at Elon | 0-0-0 | 0 | 0 | 0 | 0 | 0 | GB: |
| vs. Boston College | 0-0-0 | 0 | 0 | 0 | 0 | 0 | CAREER HIGHS |
| at Cal | 0-0-0 | 0 | 0 | 0 | 0 | 0 | Gls: 1 vs. Central Michigan (2/9/25) |
| at UC Davis | 0-0-0 | 0 | 0 | 0 | 0 | 0 | Assts: |
| vs. Harvard | 0-0-0 | 0 | 0 | 0 | 0 | 0 | Pts: 1 vs. Central Michigan (2/9/25) |
| at Syracuse | 0-0-0 | 0 | 0 | 0 | 0 | 0 | DC: |
| vs. North Carolina | 0-0-0 | 0 | 0 | 0 | 0 | 0 | CT: 1 vs. Central Michigan (2/9/25) |
| vs. Stanford | 0-0-0 | 0 | 0 | 0 | 0 | 0 | GB: |
| at Pitt | 0-0-0 | 0 | 0 | 0 | 0 | 0 | |
| vs. Louisville | 0-0-0 | 0 | 0 | 0 | 0 | 0 | |
| TOTAL | | | | | | | HONORS & AWARDS |
| * - started game | | | | | | | |

5



Erin Hooper

Sophomore
Midfield

5-5

Annapolis, MD
Seyern School

| 2025 | G-A-P | Sh | SOG | GB | DC | CT | SEASON HIGHS |
|----------------------|-------|----|-----|----|----|----|----------------------------|
| at Northwestern | 0-0-0 | 0 | 0 | 0 | 0 | 0 | Gls: |
| vs. Central Michigan | 0-0-0 | 0 | 0 | 0 | 0 | 0 | Assts: |
| vs. Eastern Michigan | 0-0-0 | 0 | 0 | 0 | 0 | 0 | Pts: |
| vs. Clemson | 0-0-0 | 0 | 0 | 0 | 0 | 0 | DC: |
| at Duke | 0-0-0 | 0 | 0 | 0 | 0 | 0 | CT: |
| at Elon | 0-0-0 | 0 | 0 | 0 | 0 | 0 | GB: |
| vs. Boston College | 0-0-0 | 0 | 0 | 0 | 0 | 0 | CAREER HIGHS |
| at Cal | 0-0-0 | 0 | 0 | 0 | 0 | 0 | Gls: |
| at UC Davis | 0-0-0 | 0 | 0 | 0 | 0 | 0 | Assts: |
| vs. Harvard | 0-0-0 | 0 | 0 | 0 | 0 | 0 | Pts: |
| at Syracuse | 0-0-0 | 0 | 0 | 0 | 0 | 0 | DC: |
| vs. North Carolina | 0-0-0 | 0 | 0 | 0 | 0 | 0 | CT: |
| vs. Stanford | 0-0-0 | 0 | 0 | 0 | 0 | 0 | GB: |
| at Pitt | 0-0-0 | 0 | 0 | 0 | 0 | 0 | |
| vs. Louisville | 0-0-0 | 0 | 0 | 0 | 0 | 0 | |
| TOTAL | | | | | | | HONORS & AWARDS |
| * - started game | | | | | | | |



2025 Notre Dame Women's Lacrosse

6



Fran Frieri

Junior
Attack
5-3
Lockport, IL
Lockport Township

| 2025 | G-A-P | Sh | SOG | GB | DC | CT | SEASON HIGHS |
|----------------------|-------|----|-----|----|----|----|---|
| at Northwestern | 0-0-0 | 1 | 1 | 0 | 0 | 0 | Gls: 2, 2x at UC Davis (3/15/25) |
| vs. Central Michigan | 2-0-2 | 2 | 2 | 1 | 0 | 0 | Assts: 3 vs. Eastern Michigan (2/15/25) |
| vs. Eastern Michigan | 0-3-3 | 0 | 0 | 0 | 0 | 0 | Pts: 3, 2x at UC Davis (3/15/25) |
| vs. Clemson | 0-2-2 | 0 | 0 | 1 | 0 | 0 | DC: |
| at Duke | 0-0-0 | 1 | 0 | 0 | 0 | 0 | CT: |
| at Elon | 1-0-1 | 1 | 1 | 0 | 0 | 0 | GB: 1, 4x, vs. Stanford (4/5/25) |
| vs. Boston College | 0-0-0 | 0 | 0 | 0 | 0 | 0 | CAREER HIGHS |
| at Cal | 0-0-0 | 0 | 0 | 0 | 0 | 0 | Gls: 3, at Butler (04/10/23) |
| at UC Davis | 2-1-3 | 2 | 2 | 0 | 0 | 0 | Assts: 3 vs. Eastern Michigan (2/15/25) |
| vs. Harvard | 0-1-1 | 0 | 0 | 0 | 0 | 0 | Pts: 3, 3x at UC Davis (3/15/25) |
| at Syracuse | 0-1-1 | 0 | 0 | 0 | 0 | 0 | DC: |
| vs. North Carolina | 0-0-0 | 1 | 1 | 1 | 0 | 0 | CT: |
| vs. Stanford | 0-1-1 | 1 | 1 | 1 | 0 | 0 | GB: 2, at Virginia Tech (04/13/24) |
| at Pitt | 0-0-0 | 0 | 0 | 0 | 0 | 0 | HONORS & AWARDS |
| vs. Louisville | 0-0-0 | 0 | 0 | 0 | 0 | 0 | |
| TOTAL | | | | | | | |
| * - started game | | | | | | | |

7



Maeve Dwyer

Junior
Attack/Draw Specialist
5-6
Winnetka, IL
Loyola Academy

| 2025 | G-A-P | Sh | SOG | GB | DC | CT | SEASON HIGHS |
|----------------------|-------|----|-----|----|----|----|---|
| at Northwestern | 0-0-0 | 0 | 0 | 0 | 0 | 0 | Gls: |
| vs. Central Michigan | 0-0-0 | 0 | 0 | 0 | 0 | 0 | Assts: |
| vs. Eastern Michigan | 0-0-0 | 0 | 0 | 0 | 1 | 0 | Pts: |
| vs. Clemson | 0-0-0 | 0 | 0 | 0 | 1 | 0 | DC: 1, 4x, vs. North Carolina (3/30/25) |
| at Duke | 0-0-0 | 0 | 0 | 0 | 0 | 0 | CT: 1 vs. North Carolina (3/30/25) |
| at Elon | 0-0-0 | 0 | 0 | 0 | 0 | 0 | GB: |
| vs. Boston College | 0-0-0 | 0 | 0 | 0 | 0 | 0 | CAREER HIGHS |
| at Cal | 0-0-0 | 0 | 0 | 0 | 0 | 0 | Gls: 2, vs. Eastern Michigan (02/09/24) |
| at UC Davis | 0-0-0 | 0 | 0 | 0 | 0 | 0 | Assts: |
| vs. Harvard | 0-0-0 | 0 | 0 | 0 | 0 | 0 | Pts: 2, vs. Eastern Michigan (02/09/24) |
| at Syracuse | 0-0-0 | 0 | 0 | 0 | 1 | 0 | DC: 1, 4x, vs. North Carolina (3/30/25) |
| vs. North Carolina | 0-0-0 | 0 | 0 | 0 | 1 | 1 | GB: 2, vs. Eastern Michigan (02/09/24) |
| vs. Stanford | 0-0-0 | 0 | 0 | 0 | 0 | 0 | HONORS & AWARDS |
| at Pitt | 0-0-0 | 0 | 0 | 0 | 0 | 0 | |
| vs. Louisville | 0-0-0 | 0 | 0 | 0 | 0 | 0 | |
| TOTAL | | | | | | | |
| * - started game | | | | | | | |

8



Molly Moore

Freshman
Defense
5-5
Darien, CT
Greenwich Academy

| 2025 | G-A-P | Sh | SOG | GB | DC | CT | SEASON HIGHS |
|----------------------|-------|----|-----|----|----|----|-----------------|
| at Northwestern | 0-0-0 | 0 | 0 | 0 | 0 | 0 | Gls: |
| vs. Central Michigan | 0-0-0 | 0 | 0 | 0 | 0 | 0 | Assts: |
| vs. Eastern Michigan | 0-0-0 | 0 | 0 | 0 | 0 | 0 | Pts: |
| vs. Clemson | 0-0-0 | 0 | 0 | 0 | 0 | 0 | DC: |
| at Duke | 0-0-0 | 0 | 0 | 0 | 0 | 0 | CT: |
| at Elon | 0-0-0 | 0 | 0 | 0 | 0 | 0 | GB: |
| vs. Boston College | 0-0-0 | 0 | 0 | 0 | 0 | 0 | CAREER HIGHS |
| at Cal | 0-0-0 | 0 | 0 | 0 | 0 | 0 | Gls: |
| at UC Davis | 0-0-0 | 0 | 0 | 0 | 0 | 0 | Assts: |
| vs. Harvard | 0-0-0 | 0 | 0 | 0 | 0 | 0 | Pts: |
| at Syracuse | 0-0-0 | 0 | 0 | 0 | 0 | 0 | DC: |
| vs. North Carolina | 0-0-0 | 0 | 0 | 0 | 0 | 0 | CT: |
| vs. Stanford | 0-0-0 | 0 | 0 | 0 | 0 | 0 | GB: |
| at Pitt | 0-0-0 | 0 | 0 | 0 | 0 | 0 | HONORS & AWARDS |
| vs. Louisville | 0-0-0 | 0 | 0 | 0 | 0 | 0 | |
| TOTAL | | | | | | | |
| * - started game | | | | | | | |



2025 Notre Dame Women's Lacrosse

9



Meghan O'Hare
Sophomore
Midfield
5-19
Annapolis, MD
St. Mary's High School

| 2025 | G-A-P | Sh | SOG | GB | DC | CT | SEASON HIGHS |
|-----------------------|-------|----|-----|----|----|----|--|
| *at Northwestern | 0-0-0 | 0 | 0 | 1 | 0 | 3 | Gls: 2 vs. Stanford (4/5/25) |
| *vs. Central Michigan | 0-2-2 | 0 | 0 | 4 | 1 | 2 | Assts: 2 vs. Central Michigan (2/9/25) |
| *vs. Eastern Michigan | 0-0-0 | 1 | 1 | 4 | 1 | 2 | Pts: 2, 2x vs. Stanford (4/5/25) |
| *vs. Clemson | 0-1-1 | 1 | 0 | 1 | 7 | 1 | DC: 8 at Duke (2/28/25) |
| *at Duke | 0-0-0 | 1 | 0 | 2 | 8 | 1 | CT: 3 at Northwestern (2/7/25) |
| *at Elon | 0-0-0 | 0 | 0 | 2 | 1 | 1 | GB: 4 vs. Central Michigan (2/9/25) |
| *vs. Boston College | 0-1-1 | 0 | 0 | 1 | 2 | 0 | |
| *at Cal | 0-0-0 | 0 | 0 | 0 | 3 | 1 | CAREER HIGHS |
| *at UC Davis | 0-0-0 | 2 | 1 | 2 | 2 | 1 | Gls: 2, 2x vs. Stanford (4/5/25) |
| *vs. Harvard | 0-0-0 | 0 | 0 | 1 | 1 | 2 | Assts: 2 vs. Central Michigan (2/9/25) |
| *at Syracuse | 1-0-1 | 2 | 2 | 0 | 2 | 1 | Pts: 2, 4x, vs. Stanford (4/5/25) |
| *vs. North Carolina | 1-0-1 | 3 | 1 | 1 | 2 | 0 | DC: 8 at Duke (2/28/25) |
| *vs. Stanford | 2-0-2 | 2 | 2 | 0 | 1 | 1 | CT: 3 at Northwestern (2/7/25) |
| at Pitt | 0-0-0 | 0 | 0 | 0 | 0 | 0 | GB: 4 vs. Central Michigan (2/9/25) |
| vs. Louisville | 0-0-0 | 0 | 0 | 0 | 0 | 0 | HONORS & AWARDS |
| TOTAL | | | | | | | • 2024 All-ACC Freshman Team |
| * - started game | | | | | | | |

10



Kiki Liebezeit
Freshman
Midfield
5-10
Berwyn, PA
Conestoga High School

| 2025 | G-A-P | Sh | SOG | GB | DC | CT | SEASON HIGHS |
|----------------------|-------|----|-----|----|----|----|----------------------------|
| at Northwestern | 0-0-0 | 0 | 0 | 0 | 0 | 0 | Gls: |
| vs. Central Michigan | 0-0-0 | 0 | 0 | 0 | 0 | 0 | Assts: |
| vs. Eastern Michigan | 0-0-0 | 0 | 0 | 0 | 0 | 0 | Pts: |
| vs. Clemson | 0-0-0 | 0 | 0 | 0 | 0 | 0 | DC: |
| at Duke | 0-0-0 | 0 | 0 | 0 | 0 | 0 | CT: |
| at Elon | 0-0-0 | 0 | 0 | 0 | 0 | 0 | GB: |
| vs. Boston College | 0-0-0 | 0 | 0 | 0 | 0 | 0 | CAREER HIGHS |
| at Cal | 0-0-0 | 0 | 0 | 0 | 0 | 0 | Gls: |
| at UC Davis | 0-0-0 | 0 | 0 | 0 | 0 | 0 | Assts: |
| vs. Harvard | 0-0-0 | 0 | 0 | 0 | 0 | 0 | Pts: |
| at Syracuse | 0-0-0 | 0 | 0 | 0 | 0 | 0 | DC: |
| vs. North Carolina | 0-0-0 | 0 | 0 | 0 | 0 | 0 | CT: |
| vs. Stanford | 0-0-0 | 0 | 0 | 0 | 0 | 0 | GB: |
| at Pitt | 0-0-0 | 0 | 0 | 0 | 0 | 0 | HONORS & AWARDS |
| vs. Louisville | 0-0-0 | 0 | 0 | 0 | 0 | 0 | |
| TOTAL | | | | | | | |
| * - started game | | | | | | | |

11



Marleigh Sanders
Senior
Attack
5-9
Milton, GA
Milton High School

| 2025 | G-A-P | Sh | SOG | GB | DC | CT | SEASON HIGHS |
|----------------------|-------|----|-----|----|----|----|--|
| at Northwestern | 0-0-0 | 0 | 0 | 0 | 0 | 0 | Gls: |
| vs. Central Michigan | 0-0-0 | 0 | 0 | 0 | 0 | 0 | Assts: |
| vs. Eastern Michigan | 0-0-0 | 0 | 0 | 0 | 0 | 0 | Pts: |
| vs. Clemson | 0-0-0 | 0 | 0 | 0 | 0 | 0 | DC: |
| at Duke | 0-0-0 | 0 | 0 | 0 | 0 | 0 | CT: |
| at Elon | 0-0-0 | 0 | 0 | 0 | 0 | 0 | GB: |
| vs. Boston College | 0-0-0 | 0 | 0 | 0 | 0 | 0 | CAREER HIGHS |
| at Cal | 0-0-0 | 0 | 0 | 0 | 0 | 0 | Gls: 1, vs. SDSU (02/10/23) |
| at UC Davis | 0-0-0 | 0 | 0 | 0 | 0 | 0 | Assts: 2, vs Central Michigan (02/19/23) |
| vs. Harvard | 0-0-0 | 0 | 0 | 0 | 0 | 0 | Pts: 2, vs Central Michigan (02/19/23) |
| at Syracuse | 0-0-0 | 0 | 0 | 0 | 0 | 0 | DC: |
| vs. North Carolina | 0-0-0 | 0 | 0 | 0 | 0 | 0 | CT: |
| vs. Stanford | 0-0-0 | 0 | 0 | 0 | 0 | 0 | GB: 1, vs Central Michigan (02/19/23) |
| at Pitt | 0-0-0 | 0 | 0 | 0 | 0 | 0 | HONORS & AWARDS |
| vs. Louisville | 0-0-0 | 0 | 0 | 0 | 0 | 0 | |
| TOTAL | | | | | | | |
| * - started game | | | | | | | |



2025 Notre Dame Women's Lacrosse

12



Emma Murphy

Junior
Attack
5-6
Midland, MI
H.H. Dow

| 2025 | G-A-P | Sh | SOG | GB | DC | CT | SEASON HIGHS |
|-----------------------|-------|----|-----|----|----|----|--|
| *at Northwestern | 1-0-1 | 3 | 1 | 2 | 0 | 1 | Gls: 4 at UC Davis (3/15/25) |
| *vs. Central Michigan | 3-1-4 | 4 | 4 | 0 | 1 | 0 | Assts: 1, 2x, vs. Eastern Michigan (2/15/25) |
| *vs. Eastern Michigan | 2-1-3 | 7 | 4 | 0 | 0 | 1 | Pts: 4 vs. Central Michigan (2/9/25) |
| vs. Clemson | 1-0-1 | 2 | 2 | 0 | 0 | 1 | DC: 1 vs. Central Michigan (2/9/25) |
| at Duke | 1-1-2 | 3 | 3 | 0 | 0 | 0 | CT: 1, 3x, vs. Clemson (2/22/25) |
| at Elon | 0-1-1 | 1 | 1 | 0 | 0 | 0 | GB: 3 at Cal (3/13/25) |
| *vs. Boston College | 2-0-2 | 4 | 3 | 0 | 0 | 0 | CAREER HIGHS |
| at Cal | 1-0-1 | 3 | 3 | 3 | 0 | 0 | Gls: 4 at UC Davis (3/15/25) |
| at UC Davis | 4-0-4 | 9 | 5 | 1 | 0 | 0 | Assts: 1 vs. Central Michigan (2/9/25) |
| vs. Harvard | 1-0-1 | 3 | 3 | 0 | 0 | 0 | Pts: 4 vs. Central Michigan (2/9/25) |
| at Syracuse | 1-0-1 | 4 | 2 | 1 | 0 | 0 | DC: 1 vs. Central Michigan (2/9/25) |
| vs. North Carolina | 0-0-0 | 3 | 2 | 0 | 0 | 0 | CT: 1, 3x, vs. Clemson (2/22/25) |
| vs. Stanford | 0-0-0 | 2 | 1 | 0 | 0 | 0 | GB: 3 at Cal (3/13/25) |
| at Pitt | 0-0-0 | 0 | 0 | 0 | 0 | 0 | HONORS & AWARDS |
| vs. Louisville | 0-0-0 | 0 | 0 | 0 | 0 | 0 | |
| TOTAL | | | | | | | |
| * - started game | | | | | | | |

13



Julia Carr

Senior
Defense
5-10
Rockville, MD
Stone Ridge School of the
Sacred Heart

| 2025 | G-A-P | Sh | SOG | GB | DC | CT | SEASON HIGHS |
|-----------------------|-------|----|-----|----|----|----|--|
| *at Northwestern | 0-0-0 | 0 | 0 | 1 | 0 | 3 | Gls: |
| *vs. Central Michigan | 0-0-0 | 0 | 0 | 1 | 0 | 2 | Assts: |
| *vs. Eastern Michigan | 0-0-0 | 0 | 0 | 1 | 0 | 1 | Pts: |
| *vs. Clemson | 0-0-0 | 0 | 0 | 0 | 0 | 0 | DC: |
| *at Duke | 0-0-0 | 0 | 0 | 1 | 0 | 2 | CT: 3 at Northwestern (2/7/25) |
| *at Elon | 0-0-0 | 0 | 0 | 0 | 0 | 0 | GB: 2, 2x at Syracuse (3/23/25) |
| *vs. Boston College | 0-0-0 | 0 | 0 | 1 | 0 | 1 | CAREER HIGHS |
| *at Cal | 0-0-0 | 0 | 0 | 0 | 0 | 0 | Gls: |
| *at UC Davis | 0-0-0 | 0 | 0 | 1 | 0 | 1 | Assts: 1, vs. Central Michigan (2/19/23) |
| *vs. Harvard | 0-0-0 | 0 | 0 | 2 | 0 | 1 | Pts: 1, vs. Central Michigan (2/19/23) |
| *at Syracuse | 0-0-0 | 0 | 0 | 2 | 0 | 1 | DC: 2, vs. Central Michigan (2/19/23) |
| *vs. North Carolina | 0-0-0 | 0 | 0 | 0 | 0 | 1 | CT: 3, 2x at Northwestern (2/7/25) |
| *vs. Stanford | 0-0-0 | 0 | 0 | 1 | 0 | 2 | GB: 2, 3x at Syracuse (3/23/25) |
| vs. Louisville | 0-0-0 | 0 | 0 | 0 | 0 | 0 | HONORS & AWARDS |
| TOTAL | | | | | | | |
| * - started game | | | | | | | • 2024 IWLCA Community Awareness Award — Division I |

14



Franny O'Brien

Junior
Midfield
5-7
Bedford Corners, NY
Sacred Heart Greenwich

| 2025 | G-A-P | Sh | SOG | GB | DC | CT | SEASON HIGHS |
|----------------------|-------|----|-----|----|----|----|---|
| at Northwestern | 0-0-0 | 0 | 0 | 0 | 0 | 0 | Gls: 2 at UC Davis (3/15/25) |
| vs. Central Michigan | 0-0-0 | 0 | 0 | 0 | 0 | 0 | Assts: 1, 2x, vs. Stanford (4/5/25) |
| vs. Eastern Michigan | 0-0-0 | 0 | 0 | 0 | 0 | 0 | Pts: 3 at UC Davis (3/15/25) |
| vs. Clemson | 0-0-0 | 0 | 0 | 0 | 0 | 0 | DC: 1 at Cal (3/13/25) |
| at Duke | 0-0-0 | 0 | 0 | 0 | 0 | 0 | CT: 5 vs. Stanford (4/5/25) |
| at Elon | 0-0-0 | 0 | 0 | 0 | 0 | 0 | GB: 3 at Syracuse (3/23/25) |
| vs. Boston College | 0-0-0 | 0 | 0 | 1 | 0 | 1 | CAREER HIGHS |
| *at Cal | 1-0-1 | 1 | 1 | 0 | 1 | 0 | Gls: 2, 3x at UC Davis (3/15/25) |
| *at UC Davis | 2-1-3 | 4 | 3 | 1 | 0 | 1 | Assts: 1, 3x, vs. Stanford (4/5/25) |
| *vs. Harvard | 0-0-0 | 1 | 1 | 1 | 0 | 0 | Pts: 3 at UC Davis (3/15/25) |
| *at Syracuse | 0-0-0 | 1 | 0 | 3 | 0 | 1 | DC: 2, vs. Pitt (03/30/24) |
| *vs. North Carolina | 0-0-0 | 0 | 0 | 2 | 0 | 1 | CT: 5 vs. Stanford (4/5/25) |
| *vs. Stanford | 0-1-1 | 0 | 0 | 0 | 0 | 5 | HONORS & AWARDS |
| at Pitt | 0-0-0 | 0 | 0 | 0 | 0 | 0 | |
| vs. Louisville | 0-0-0 | 0 | 0 | 0 | 0 | 0 | |
| TOTAL | | | | | | | |
| * - started game | | | | | | | |



2025 Notre Dame Women's Lacrosse

15



Shannon Earley

Freshman
Midfield
5-8
Hinsdale, IL
Benet Academy

| 2025 | G-A-P | Sh | SOG | GB | DC | CT | SEASON HIGHS |
|-----------------------|-------|----|-----|----|----|----|--|
| *at Northwestern | 0-0-0 | 0 | 0 | 1 | 2 | 0 | Gls: 1 at UC Davis (3/15/25) |
| *vs. Central Michigan | 0-0-0 | 0 | 0 | 1 | 3 | 0 | Assts: |
| *vs. Eastern Michigan | 0-0-0 | 0 | 0 | 2 | 2 | 1 | Pts: 1 at UC Davis (3/15/25) |
| *vs. Clemson | 0-0-0 | 0 | 0 | 1 | 0 | 0 | DC: 3 vs. Central Michigan (2/9/25) |
| at Duke | 0-0-0 | 0 | 0 | 1 | 0 | 3 | CT: 1 vs. Eastern Michigan (2/15/25) |
| at Elon | 0-0-0 | 0 | 0 | 1 | 0 | 0 | GB: 1, 2x, vs. Central Michigan (2/9/25) |
| vs. Boston College | 0-0-0 | 0 | 0 | 0 | 0 | 0 | CAREER HIGHS |
| at Cal | 0-0-0 | 0 | 0 | 0 | 0 | 0 | Gls: 1 at UC Davis (3/15/25) |
| *at UC Davis | 1-0-1 | 1 | 1 | 0 | 0 | 0 | Assts: |
| vs. Harvard | 0-0-0 | 0 | 0 | 0 | 0 | 0 | Pts: 1 at UC Davis (3/15/25) |
| at Syracuse | 0-0-0 | 0 | 0 | 0 | 0 | 0 | DC: 3 vs. Central Michigan (2/9/25) |
| vs. North Carolina | 0-0-0 | 0 | 0 | 0 | 0 | 0 | CT: 1 vs. Eastern Michigan (2/15/25) |
| vs. Stanford | 0-0-0 | 0 | 0 | 0 | 0 | 0 | GB: 1, 2x, vs. Central Michigan (2/9/25) |
| at Pitt | 0-0-0 | 0 | 0 | 0 | 0 | 0 | HONORS & AWARDS |
| vs. Louisville | 0-0-0 | 0 | 0 | 0 | 0 | 0 | |
| TOTAL | | | | | | | |
| * - started game | | | | | | | |

16



Kristen Shanahan

Graduate
Midfield
5-9
Holbrook, NY
Sachem High School East

| 2025 | G-A-P | Sh | SOG | GB | DC | CT | SEASON HIGHS |
|-----------------------|-------|----|-----|----|----|----|--|
| *at Northwestern | 3-0-3 | 5 | 4 | 2 | 1 | 0 | Gls: 5 at Syracuse (3/23/25) |
| *vs. Central Michigan | 2-0-2 | 3 | 3 | 1 | 10 | 1 | Assts: 2, 3x, at Cal (3/13/25) |
| *vs. Eastern Michigan | 3-0-3 | 7 | 6 | 2 | 3 | 0 | Pts: 6 at Syracuse (3/23/25) |
| *vs. Clemson | 2-0-2 | 7 | 5 | 1 | 0 | 0 | DC: 10 vs. Central Michigan (2/9/25) |
| *at Duke | 3-1-4 | 6 | 3 | 0 | 1 | 0 | CT: 1, 2x at Syracuse (3/23/25) |
| *at Elon | 1-2-3 | 6 | 2 | 1 | 1 | 0 | GB: 2 at Northwestern (2/7/25) |
| *vs. Boston College | 1-2-3 | 5 | 4 | 0 | 0 | 0 | CAREER HIGHS |
| at Cal | 0-2-2 | 1 | 1 | 0 | 0 | 0 | Gls: 5 at Syracuse (3/23/25) |
| at UC Davis | 0-0-0 | 0 | 0 | 0 | 0 | 0 | Assts: 2, 4x, at Cal (3/13/25) |
| *vs. Harvard | 1-2-3 | 3 | 2 | 0 | 0 | 0 | Pts: 6 at Syracuse (3/23/25) |
| *at Syracuse | 5-1-6 | 6 | 5 | 1 | 0 | 1 | DC: 10 vs. Central Michigan (2/9/25) |
| *vs. North Carolina | 1-0-1 | 1 | 1 | 0 | 0 | 0 | CT: 1, 2x at Syracuse (3/23/25) |
| *vs. Stanford | 1-1-2 | 8 | 5 | 1 | 0 | 0 | GB: 3, 2x; at Robert Morris (04/16/23) |
| at Pitt | 0-0-0 | 0 | 0 | 0 | 0 | 0 | HONORS & AWARDS |
| vs. Louisville | 0-0-0 | 0 | 0 | 0 | 0 | 0 | |
| TOTAL | | | | | | | |
| * - started game | | | | | | | |

17



Angie Conley

Sophomore
Midfield
5-5
Clarendon Hills, IL
Hinsdale Central High School

| 2025 | G-A-P | Sh | SOG | GB | DC | CT | SEASON HIGHS |
|----------------------|-------|----|-----|----|----|----|--|
| *at Northwestern | 0-2-2 | 4 | 2 | 0 | 0 | 0 | Gls: 3, 2x, vs. Eastern Michigan (2/15/25) |
| vs. Central Michigan | 3-0-3 | 5 | 4 | 2 | 0 | 1 | Assts: 2 at Northwestern (2/7/25) |
| vs. Eastern Michigan | 3-1-4 | 5 | 5 | 0 | 0 | 0 | Pts: 3 vs. Eastern Michigan (2/15/25) |
| vs. Clemson | 1-1-2 | 3 | 2 | 0 | 0 | 0 | DC: |
| at Duke | 1-0-1 | 2 | 2 | 0 | 0 | 1 | CT: 1 vs. Central Michigan (2/9/25) |
| at Elon | 0-0-0 | 3 | 2 | 0 | 0 | 0 | GB: 2, 2x, at Cal (3/13/25) |
| vs. Boston College | 0-1-1 | 0 | 0 | 0 | 0 | 0 | CAREER HIGHS |
| at Cal | 2-0-2 | 2 | 2 | 2 | 0 | 0 | Gls: 3 vs. Central Michigan (2/9/25) |
| at UC Davis | 0-0-0 | 0 | 0 | 0 | 0 | 0 | Assts: 2, 3x; at Northwestern (2/7/25) |
| vs. Harvard | 0-1-1 | 0 | 0 | 0 | 0 | 0 | Pts: 3 vs. Eastern Michigan (2/15/25) |
| at Syracuse | 0-0-0 | 0 | 0 | 0 | 0 | 0 | CT: 1 vs. Central Michigan (2/9/25) |
| vs. North Carolina | 0-0-0 | 0 | 0 | 0 | 0 | 0 | GB: 2, 2x, at Cal (3/13/25) |
| vs. Stanford | 0-0-0 | 0 | 0 | 0 | 0 | 0 | HONORS & AWARDS |
| at Pitt | 0-0-0 | 0 | 0 | 0 | 0 | 0 | |
| vs. Louisville | 0-0-0 | 0 | 0 | 0 | 0 | 0 | |
| TOTAL | | | | | | | |
| * - started game | | | | | | | |



2025 Notre Dame Women's Lacrosse

18



Anna Kenney

Junior

Attack

5-9

Hingham, MA

Thayer Academy

| 2025 | G-A-P | Sh | SOG | GB | DC | CT | SEASON HIGHS |
|----------------------|-------|----|-----|----|----|----|---|
| at Northwestern | 0-0-0 | 0 | 0 | 0 | 0 | 0 | Gls:1 at UC Davis (3/15/25) |
| vs. Central Michigan | 0-0-0 | 0 | 0 | 0 | 0 | 0 | Assts: |
| vs. Eastern Michigan | 0-0-0 | 0 | 0 | 0 | 0 | 0 | Pts:1 at UC Davis (3/15/25) |
| vs. Clemson | 0-0-0 | 0 | 0 | 0 | 0 | 0 | DC: |
| at Duke | 0-0-0 | 0 | 0 | 0 | 0 | 0 | CT: |
| at Elon | 0-0-0 | 0 | 0 | 0 | 0 | 0 | GB: |
| vs. Boston College | 0-0-0 | 0 | 0 | 0 | 0 | 0 | CAREER HIGHS |
| at Cal | 0-0-0 | 2 | 1 | 0 | 0 | 0 | Gls:3, vs. Central Michigan (2/19/23) |
| at UC Davis | 1-0-1 | 1 | 1 | 0 | 0 | 0 | Assts: |
| vs. Harvard | 0-0-0 | 0 | 0 | 0 | 0 | 0 | Pts:3, vs. Central Michigan (2/19/23) |
| at Syracuse | 0-0-0 | 0 | 0 | 0 | 0 | 0 | GB:1, 3x; at Robert Morris (4/16/23) |
| vs. North Carolina | 0-0-0 | 0 | 0 | 0 | 0 | 0 | |
| vs. Stanford | 0-0-0 | 0 | 0 | 0 | 0 | 0 | |
| at Pitt | 0-0-0 | 0 | 0 | 0 | 0 | 0 | |
| vs. Louisville | 0-0-0 | 0 | 0 | 0 | 0 | 0 | |
| TOTAL | | | | | | | HONORS & AWARDS |
| * - started game | | | | | | | |

19



Hadley Keating

Freshman

Attack

5-3

Troy, MI

Detroit Country Day School

| 2025 | G-A-P | Sh | SOG | GB | DC | CT | SEASON HIGHS |
|----------------------|-------|----|-----|----|----|----|----------------------------|
| at Northwestern | 0-0-0 | 0 | 0 | 0 | 0 | 0 | Gls: |
| vs. Central Michigan | 0-0-0 | 0 | 0 | 0 | 0 | 0 | Assts: |
| vs. Eastern Michigan | 0-0-0 | 0 | 0 | 0 | 0 | 0 | Pts: |
| vs. Clemson | 0-0-0 | 0 | 0 | 0 | 0 | 0 | DC: |
| at Duke | 0-0-0 | 0 | 0 | 0 | 0 | 0 | CT: |
| at Elon | 0-0-0 | 0 | 0 | 0 | 0 | 0 | GB: |
| vs. Boston College | 0-0-0 | 0 | 0 | 0 | 0 | 0 | CAREER HIGHS |
| at Cal | 0-0-0 | 0 | 0 | 0 | 0 | 0 | Gls: |
| at UC Davis | 0-0-0 | 0 | 0 | 0 | 0 | 0 | Assts: |
| vs. Harvard | 0-0-0 | 0 | 0 | 0 | 0 | 0 | Pts: |
| at Syracuse | 0-0-0 | 0 | 0 | 0 | 0 | 0 | DC: |
| vs. North Carolina | 0-0-0 | 0 | 0 | 0 | 0 | 0 | CT: |
| vs. Stanford | 0-0-0 | 0 | 0 | 0 | 0 | 0 | GB: |
| at Pitt | 0-0-0 | 0 | 0 | 0 | 0 | 0 | |
| vs. Louisville | 0-0-0 | 0 | 0 | 0 | 0 | 0 | |
| TOTAL | | | | | | | HONORS & AWARDS |
| * - started game | | | | | | | |

21



Ava Kristynik

Senior

Attack/Draw Specialist

5-9

Southlake, TX

Liberty Christian School

| 2025 | G-A-P | Sh | SOG | GB | DC | CT | SEASON HIGHS |
|----------------------|-------|----|-----|----|----|----|--|
| at Northwestern | 0-0-0 | 0 | 0 | 0 | 0 | 0 | Gls:1 at Cal (3/13/25) |
| vs. Central Michigan | 0-0-0 | 0 | 0 | 0 | 0 | 0 | Assts: |
| vs. Eastern Michigan | 0-0-0 | 0 | 0 | 0 | 0 | 0 | Pts:1 at Cal (3/13/25) |
| *vs. Clemson | 0-0-0 | 0 | 0 | 0 | 3 | 0 | DC:13 at UC Davis (3/15/25) |
| *at Duke | 0-0-0 | 0 | 0 | 0 | 2 | 0 | CT: |
| *at Elon | 0-0-0 | 0 | 0 | 0 | 0 | 0 | GB: |
| *vs. Boston College | 0-0-0 | 0 | 0 | 0 | 5 | 0 | CAREER HIGHS |
| *at Cal | 1-0-1 | 1 | 1 | 0 | 1 | 0 | Gls:2, vs. Detroit Mercy, 4/5/22 |
| *at UC Davis | 0-0-0 | 1 | 0 | 0 | 13 | 0 | Assts:1, 2x; at Butler 4/10/23 |
| *vs. Harvard | 0-0-0 | 0 | 0 | 0 | 0 | 0 | Pts:2, 2x; at Butler 4/10/23 |
| at Syracuse | 0-0-0 | 0 | 0 | 0 | 5 | 0 | GB:1, at Butler 4/10/23 |
| *vs. North Carolina | 0-0-0 | 0 | 0 | 0 | 3 | 0 | DCs:13 at UC Davis (3/15/25) |
| *vs. Stanford | 0-0-0 | 0 | 0 | 0 | 6 | 0 | |
| at Pitt | 0-0-0 | 0 | 0 | 0 | 0 | 0 | |
| vs. Louisville | 0-0-0 | 0 | 0 | 0 | 0 | 0 | |
| TOTAL | | | | | | | HONORS & AWARDS |
| * - started game | | | | | | | |



2025 Notre Dame Women's Lacrosse

22



Kate Timarky
Sophomore
Attack
5-4
Centereach, NY
Centereach High School

| 2025 | G-A-P | Sh | SOG | GB | DC | CT | SEASON HIGHS |
|-----------------------|-------|----|-----|----|----|----|--|
| *at Northwestern | 3-0-3 | 7 | 4 | 3 | 0 | 1 | Gls: 3, 3x vs. Boston College (3/8/25) |
| vs. Central Michigan | 2-0-2 | 6 | 5 | 2 | 0 | 0 | Assts: |
| *vs. Eastern Michigan | 3-0-3 | 3 | 3 | 1 | 0 | 2 | Pts: 3, 3x vs. Boston College (3/8/25) |
| vs. Clemson | 2-0-2 | 3 | 3 | 1 | 0 | 0 | DC: |
| *at Duke | 0-0-0 | 2 | 2 | 1 | 0 | 0 | CT: 2 vs. Eastern Michigan (2/15/25) |
| *at Elon | 1-0-1 | 2 | 2 | 0 | 0 | 0 | GB: 3 at Northwestern (2/7/25) |
| vs. Boston College | 3-0-3 | 4 | 3 | 0 | 0 | 0 | CAREER HIGHS |
| at Cal | 2-0-2 | 6 | 4 | 0 | 0 | 1 | Gls: 3, 4x vs. Boston College (3/8/25) |
| *at UC Davis | 1-0-1 | 5 | 3 | 0 | 0 | 0 | Assts: |
| vs. Harvard | 1-0-1 | 4 | 4 | 2 | 0 | 1 | Pts: 3, 3x vs. Boston College (3/8/25) |
| at Syracuse | 1-0-1 | 8 | 5 | 1 | 0 | 0 | CT: 2 vs. Eastern Michigan (2/15/25) |
| vs. North Carolina | 0-0-0 | 0 | 0 | 0 | 0 | 0 | GB: 3 at Northwestern (2/7/25) |
| *vs. Stanford | 1-0-1 | 3 | 2 | 1 | 0 | 0 | |
| at Pitt | 0-0-0 | 0 | 0 | 0 | 0 | 0 | |
| vs. Louisville | 0-0-0 | 0 | 0 | 0 | 0 | 0 | |
| TOTAL | | | | | | | HONORS & AWARDS |
| * - started game | | | | | | | |

23



Margot Johnson
Freshman
Defense
5-7
Radnor, PA
Radnor High School

| 2025 | G-A-P | Sh | SOG | GB | DC | CT | SEASON HIGHS |
|----------------------|-------|----|-----|----|----|----|----------------------------|
| at Northwestern | 0-0-0 | 0 | 0 | 0 | 0 | 0 | Gls: |
| vs. Central Michigan | 0-0-0 | 0 | 0 | 0 | 0 | 0 | Assts: |
| vs. Eastern Michigan | 0-0-0 | 0 | 0 | 0 | 0 | 0 | Pts: |
| vs. Clemson | 0-0-0 | 0 | 0 | 0 | 0 | 0 | DC: |
| at Duke | 0-0-0 | 0 | 0 | 0 | 0 | 0 | CT: |
| at Elon | 0-0-0 | 0 | 0 | 0 | 0 | 0 | GB: |
| vs. Boston College | 0-0-0 | 0 | 0 | 0 | 0 | 0 | CAREER HIGHS |
| at Cal | 0-0-0 | 0 | 0 | 0 | 0 | 0 | Gls: |
| at UC Davis | 0-0-0 | 0 | 0 | 0 | 0 | 0 | Assts: |
| vs. Harvard | 0-0-0 | 0 | 0 | 0 | 0 | 0 | Pts: |
| at Syracuse | 0-0-0 | 0 | 0 | 0 | 0 | 0 | DC: |
| vs. North Carolina | 0-0-0 | 0 | 0 | 0 | 0 | 0 | CT: |
| vs. Stanford | 0-0-0 | 0 | 0 | 0 | 0 | 0 | GB: |
| at Pitt | 0-0-0 | 0 | 0 | 0 | 0 | 0 | |
| vs. Louisville | 0-0-0 | 0 | 0 | 0 | 0 | 0 | |
| TOTAL | | | | | | | HONORS & AWARDS |
| * - started game | | | | | | | |

24



Ellie Noto
Junior
Defense
5-8
Atherton, CA
Sacred Heart Preparatory

| 2025 | G-A-P | Sh | SOG | GB | DC | CT | SEASON HIGHS |
|-----------------------|-------|----|-----|----|----|----|---|
| at Northwestern | 0-0-0 | 0 | 0 | 0 | 0 | 0 | Gls: |
| vs. Central Michigan | 0-0-0 | 0 | 0 | 0 | 0 | 1 | Assts: |
| *vs. Eastern Michigan | 0-0-0 | 0 | 0 | 1 | 0 | 1 | Pts: |
| vs. Clemson | 0-0-0 | 0 | 0 | 0 | 0 | 0 | DC: |
| at Duke | 0-0-0 | 0 | 0 | 0 | 0 | 0 | CT: 1, 2x, vs. Eastern Michigan (2/15/25) |
| at Elon | 0-0-0 | 0 | 0 | 0 | 0 | 0 | GB: 1 vs. Eastern Michigan (2/15/25) |
| vs. Boston College | 0-0-0 | 0 | 0 | 0 | 0 | 0 | CAREER HIGHS |
| at Cal | 0-0-0 | 0 | 0 | 0 | 0 | 0 | Gls: |
| at UC Davis | 0-0-0 | 0 | 0 | 0 | 0 | 0 | Assts: |
| vs. Harvard | 0-0-0 | 0 | 0 | 0 | 0 | 0 | Pts: |
| at Syracuse | 0-0-0 | 0 | 0 | 0 | 0 | 0 | DC: |
| vs. North Carolina | 0-0-0 | 0 | 0 | 0 | 0 | 0 | CT: 1, 2x, vs. Eastern Michigan (2/15/25) |
| vs. Stanford | 0-0-0 | 0 | 0 | 0 | 0 | 0 | GB: 1, 2x, vs. Eastern Michigan (2/15/25) |
| at Pitt | 0-0-0 | 0 | 0 | 0 | 0 | 0 | |
| vs. Louisville | 0-0-0 | 0 | 0 | 0 | 0 | 0 | |
| TOTAL | | | | | | | HONORS & AWARDS |
| * - started game | | | | | | | |



2025 Notre Dame Women's Lacrosse

27



Madison Rassas

Freshman
Midfield
5-9
Sterling, VA
Georgetown Visitation

| 2025 | G-A-P | Sh | SOG | GB | DC | CT | SEASON HIGHS |
|-----------------------|-------|----|-----|----|----|----|--|
| *at Northwestern | 0-0-0 | 2 | 1 | 1 | 1 | 0 | Gls: 5, 2x, vs. Eastern Michigan (2/15/25) |
| *vs. Central Michigan | 5-3-8 | 6 | 6 | 1 | 3 | 1 | Assts: 3 vs. Central Michigan (2/9/25) |
| *vs. Eastern Michigan | 5-0-5 | 10 | 8 | 1 | 2 | 2 | Pts: 8 vs. Central Michigan (2/9/25) |
| *vs. Clemson | 3-0-3 | 12 | 9 | 0 | 5 | 0 | DC: 7 at Cal (3/13/25) |
| *at Duke | 2-0-2 | 3 | 3 | 0 | 3 | 0 | CT: 2 vs. Eastern Michigan (2/15/25) |
| *at Elon | 2-0-2 | 5 | 3 | 1 | 2 | 1 | GB: 1, 5x at Syracuse (3/23/25) |
| *vs. Boston College | 0-0-0 | 2 | 2 | 0 | 2 | 0 | CAREER HIGHS |
| *at Cal | 3-0-3 | 10 | 4 | 0 | 7 | 0 | Gls: 5, 2x, vs. Eastern Michigan (2/15/25) |
| *at UC Davis | 4-1-5 | 6 | 5 | 0 | 3 | 0 | Assts: 3 vs. Central Michigan (2/9/25) |
| *vs. Harvard | 4-0-4 | 10 | 6 | 0 | 1 | 0 | Pts: 8 vs. Central Michigan (2/9/25) |
| *at Syracuse | 1-0-1 | 7 | 5 | 1 | 3 | 0 | DC: 7 at Cal (3/13/25) |
| *vs. North Carolina | 0-0-0 | 2 | 2 | 0 | 1 | 1 | CT: 2 vs. Eastern Michigan (2/15/25) |
| vs. Stanford | 0-0-0 | 0 | 0 | 0 | 0 | 0 | GB: 1, 5x at Syracuse (3/23/25) |
| at Pitt | 0-0-0 | 0 | 0 | 0 | 0 | 0 | HONORS & AWARDS |
| vs. Louisville | 0-0-0 | 0 | 0 | 0 | 0 | 0 | • #2 ranked player in the class of 2024 (ILWomen's Class of 2024 Power 100) |
| TOTAL | | | | | | | |
| * - started game | | | | | | | |

28



Sloane Ginevan

Sophomore
Defense
5-10
Falmouth, ME
Falmouth High School

| 2025 | G-A-P | Sh | SOG | GB | DC | CT | SEASON HIGHS |
|----------------------|-------|----|-----|----|----|----|--|
| at Northwestern | 0-0-0 | 0 | 0 | 0 | 0 | 0 | Gls: |
| vs. Central Michigan | 0-0-0 | 0 | 0 | 0 | 0 | 0 | Assts: |
| vs. Eastern Michigan | 0-0-0 | 0 | 0 | 0 | 0 | 0 | Pts: |
| *vs. Clemson | 0-0-0 | 0 | 0 | 0 | 0 | 0 | DC: |
| *at Duke | 0-0-0 | 0 | 0 | 0 | 0 | 0 | CT: 1, 3x, vs. Stanford (4/5/25) |
| *at Elon | 0-0-0 | 0 | 0 | 3 | 0 | 0 | GB: 3, 3x, vs. Stanford (4/5/25) |
| *vs. Boston College | 0-0-0 | 0 | 0 | 2 | 0 | 0 | CAREER HIGHS |
| *at Cal | 0-0-0 | 0 | 0 | 2 | 0 | 0 | Gls: |
| *at UC Davis | 0-0-0 | 0 | 0 | 3 | 0 | 1 | Assts: |
| *vs. Harvard | 0-0-0 | 0 | 0 | 2 | 0 | 1 | Pts: |
| *at Syracuse | 0-0-0 | 0 | 0 | 1 | 0 | 0 | DC: |
| *vs. North Carolina | 0-0-0 | 0 | 0 | 0 | 0 | 0 | CT: 1, 3x, vs. Stanford (4/5/25) |
| *vs. Stanford | 0-0-0 | 0 | 0 | 3 | 0 | 1 | GB: 3, 4x, vs. Stanford (4/5/25) |
| at Pitt | 0-0-0 | 0 | 0 | 0 | 0 | 0 | HONORS & AWARDS |
| vs. Louisville | 0-0-0 | 0 | 0 | 0 | 0 | 0 | |
| TOTAL | | | | | | | |
| * - started game | | | | | | | |

30



Malie Follet

Senior
Goalkeeper
5-6
Fulton, NY
G. Ray Bodley High School

| 2025 | GA | Save | S% | GB | CT | SEASON HIGHS |
|----------------------|----|------|------|----|----|--|
| *at Northwestern | 7 | 2 | .222 | 1 | 0 | Saves: 2 at Northwestern (2/7/25) |
| vs. Central Michigan | 3 | 2 | .400 | 0 | 0 | CT: |
| vs. Eastern Michigan | 3 | 0 | 0 | 0 | 0 | GB: 1 at Northwestern (2/7/25) |
| vs. Clemson | 0 | 0 | 0 | 0 | 0 | CAREER HIGHS |
| at Duke | 0 | 0 | 0 | 0 | 0 | Saves: 2, 5x, at Northwestern (2/7/25) |
| at Elon | 0 | 0 | 0 | 0 | 0 | CT: |
| vs. Boston College | 0 | 0 | 0 | 0 | 0 | GB: 1 at Northwestern (2/7/25) |
| at Cal | 0 | 0 | 0 | 0 | 0 | |
| at UC Davis | 0 | 0 | 0 | 0 | 0 | |
| vs. Harvard | 0 | 0 | 0 | 0 | 0 | |
| at Syracuse | 0 | 0 | 0 | 0 | 0 | |
| vs. North Carolina | 0 | 0 | 0 | 0 | 0 | |
| vs. Stanford | 0 | 0 | 0 | 0 | 0 | |
| at Pitt | 0 | 0 | 0 | 0 | 0 | |
| vs. Louisville | 0 | 0 | 0 | 0 | 0 | |
| TOTAL | | | | | | |
| * - started game | | | | | | |
| | | | | | | HONORS & AWARDS |



2025 Notre Dame Women's Lacrosse

33



Katie Mallaber

Freshman

Attack

5-4

Fairport, NY

Fairport High School

| 2025 | G-A-P | Sh | SOG | GB | DC | CT | SEASON HIGHS |
|----------------------|-------|----|-----|----|----|----|---|
| at Northwestern | 0-0-0 | 0 | 0 | 0 | 0 | 0 | Gls: 2 at UC Davis (3/15/25) |
| vs. Central Michigan | 0-0-0 | 2 | 1 | 0 | 0 | 0 | Assts: 2 at Syracuse (3/23/25) |
| vs. Eastern Michigan | 0-0-0 | 0 | 0 | 0 | 0 | 0 | Pts: 3 at Syracuse (3/23/25) |
| vs. Clemson | 0-0-0 | 0 | 0 | 0 | 0 | 0 | DC: |
| at Duke | 0-0-0 | 0 | 0 | 0 | 0 | 0 | CT: |
| at Elon | 1-0-1 | 2 | 1 | 0 | 0 | 0 | GB: 1 vs. Boston College (3/8/25) |
| vs. Boston College | 0-0-0 | 3 | 2 | 1 | 0 | 0 | CAREER HIGHS |
| at Cal | 1-1-2 | 2 | 1 | 0 | 0 | 0 | Gls: 2 at UC Davis (3/15/25) |
| at UC Davis | 2-0-2 | 6 | 3 | 0 | 0 | 0 | Assts: 2 at Syracuse (3/23/25) |
| vs. Harvard | 0-0-0 | 1 | 0 | 0 | 0 | 0 | Pts: 3 at Syracuse (3/23/25) |
| at Syracuse | 1-2-3 | 2 | 1 | 0 | 0 | 0 | DC: |
| vs. North Carolina | 1-1-2 | 4 | 1 | 0 | 0 | 0 | CT: |
| vs. Stanford | 1-0-1 | 4 | 2 | 0 | 0 | 0 | GB: 1 vs. Boston College (3/8/25) |
| at Pitt | 0-0-0 | 0 | 0 | 0 | 0 | 0 | HONORS & AWARDS |
| vs. Louisville | 0-0-0 | 0 | 0 | 0 | 0 | 0 | |
| TOTAL | | | | | | | |
| * - started game | | | | | | | |

34



Lilly Eccles

Sophomore

Defense

5-7

Maplewood, NJ

Kent Place

| 2025 | G-A-P | Sh | SOG | GB | DC | CT | SEASON HIGHS |
|----------------------|-------|----|-----|----|----|----|----------------------------|
| at Northwestern | 0-0-0 | 0 | 0 | 0 | 0 | 0 | Gls: |
| vs. Central Michigan | 0-0-0 | 0 | 0 | 0 | 0 | 0 | Assts: |
| vs. Eastern Michigan | 0-0-0 | 0 | 0 | 0 | 0 | 0 | Pts: |
| vs. Clemson | 0-0-0 | 0 | 0 | 0 | 0 | 0 | DC: |
| at Duke | 0-0-0 | 0 | 0 | 0 | 0 | 0 | CT: |
| at Elon | 0-0-0 | 0 | 0 | 0 | 0 | 0 | GB: |
| vs. Boston College | 0-0-0 | 0 | 0 | 0 | 0 | 0 | CAREER HIGHS |
| at Cal | 0-0-0 | 0 | 0 | 0 | 0 | 0 | Gls: |
| at UC Davis | 0-0-0 | 0 | 0 | 0 | 0 | 0 | Assts: |
| vs. Harvard | 0-0-0 | 0 | 0 | 0 | 0 | 0 | Pts: |
| at Syracuse | 0-0-0 | 0 | 0 | 0 | 0 | 0 | DC: |
| vs. North Carolina | 0-0-0 | 0 | 0 | 0 | 0 | 0 | CT: |
| vs. Stanford | 0-0-0 | 0 | 0 | 0 | 0 | 0 | GB: |
| at Pitt | 0-0-0 | 0 | 0 | 0 | 0 | 0 | HONORS & AWARDS |
| vs. Louisville | 0-0-0 | 0 | 0 | 0 | 0 | 0 | |
| TOTAL | | | | | | | |
| * - started game | | | | | | | |

41



Lila O'Brien

Freshman

Midfield

5-5

Bedford Corners, NY

Sacred Heart Greenwich

| 2025 | G-A-P | Sh | SOG | GB | DC | CT | SEASON HIGHS |
|----------------------|-------|----|-----|----|----|----|--|
| *at Northwestern | 0-0-0 | 0 | 0 | 0 | 0 | 0 | Gls: |
| vs. Central Michigan | 0-0-0 | 0 | 0 | 0 | 0 | 0 | Assts: |
| vs. Eastern Michigan | 0-0-0 | 0 | 0 | 2 | 0 | 3 | Pts: |
| *vs. Clemson | 0-0-0 | 0 | 0 | 1 | 0 | 1 | DC: 1, 2x vs. Stanford (4/5/25) |
| *at Duke | 0-0-0 | 0 | 0 | 1 | 0 | 0 | CT: 3 vs. Eastern Michigan (2/15/25) |
| *at Elon | 0-0-0 | 0 | 0 | 0 | 0 | 0 | GB: 4 vs. Stanford (4/5/25) |
| *vs. Boston College | 0-0-0 | 0 | 0 | 1 | 1 | 0 | CAREER HIGHS |
| *at Cal | 0-0-0 | 0 | 0 | 0 | 0 | 2 | Gls: |
| *at UC Davis | 0-0-0 | 0 | 0 | 0 | 0 | 0 | Assts: |
| *vs. Harvard | 0-0-0 | 0 | 0 | 0 | 0 | 0 | Pts: |
| *at Syracuse | 0-0-0 | 0 | 0 | 2 | 0 | 2 | DC: 1, 2x vs. Stanford (4/5/25) |
| *vs. North Carolina | 0-0-0 | 0 | 0 | 0 | 0 | 0 | CT: 3 vs. Eastern Michigan (2/15/25) |
| *vs. Stanford | 0-0-0 | 0 | 0 | 4 | 1 | 0 | GB: 4 vs. Stanford (4/5/25) |
| at Pitt | 0-0-0 | 0 | 0 | 0 | 0 | 0 | HONORS & AWARDS |
| vs. Louisville | 0-0-0 | 0 | 0 | 0 | 0 | 0 | |
| TOTAL | | | | | | | |
| * - started game | | | | | | | |



2025 Notre Dame Women's Lacrosse

42



Isabel Pithie

Senior
Goalkeeper
5-6

Norwell, MA
Norwell High School

| 2025 | GA | Save | S% | GB | CT |
|-----------------------|----|------|------|----|----|
| at #2 Northwestern | 6 | 12 | .667 | 4 | 0 |
| *vs. Central Michigan | 4 | 2 | .333 | 0 | 0 |
| *vs. Eastern Michigan | 4 | 3 | .429 | 0 | 0 |
| *vs. Clemson | 12 | 9 | .429 | 3 | 0 |
| *at Duke | 11 | 6 | .353 | 4 | 0 |
| *at Elon | 4 | 10 | .714 | 3 | 0 |
| *vs. Boston College | 15 | 10 | .400 | 4 | 0 |
| *at Cal | 8 | 8 | .500 | 3 | 0 |
| *at UC Davis | 6 | 6 | .500 | 1 | 0 |
| *vs. Harvard | 6 | 14 | .700 | 1 | 0 |
| *at Syracuse | 12 | 12 | .500 | 3 | 0 |
| *vs. North Carolina | 14 | 7 | .500 | 3 | 1 |
| *vs. Stanford | 8 | 6 | .428 | 2 | 0 |
| at Pitt | 0 | 0 | 0 | 0 | 0 |
| vs. Louisville | 0 | 0 | 0 | 0 | 0 |

TOTAL
* - started game

SEASON HIGHS

Saves:14 vs Harvard (3/19/25)
CT: 1 vs. North Carolina (3/30/25)
GB:4,3x, vs. Boston College (3/8/25)

CAREER HIGHS

Saves:14 vs Harvard (3/19/25)
CT: 1 vs. North Carolina (3/30/25)
GB:4,3x, vs. Boston College (3/8/25)

HONORS & AWARDS

43



Avery Gawronski

Junior
Goalkeeper
5-5

Mullica Hill, NJ
Clearview Regional

| 2025 | GA | GAAvg. | Saves | GB | CT |
|----------------------|----|--------|-------|----|----|
| at Northwestern | 0 | 0 | 0 | 0 | 0 |
| vs. Central Michigan | 0 | 0 | 0 | 0 | 0 |
| vs. Eastern Michigan | 0 | 0 | 0 | 0 | 0 |
| vs. Clemson | 0 | 0 | 0 | 0 | 0 |
| at Duke | 0 | 0 | 0 | 0 | 0 |
| at Elon | 0 | 0 | 0 | 0 | 0 |
| vs. Boston College | 0 | 0 | 0 | 0 | 0 |
| at Cal | 0 | 0 | 0 | 0 | 0 |
| at UC Davis | 0 | 0 | 0 | 0 | 0 |
| vs. Harvard | 0 | 0 | 0 | 0 | 0 |
| at Syracuse | 0 | 0 | 0 | 0 | 0 |
| vs. North Carolina | 0 | 0 | 0 | 0 | 0 |
| vs. Stanford | 0 | 0 | 0 | 0 | 0 |
| at Pitt | 0 | 0 | 0 | 0 | 0 |
| vs. Louisville | 0 | 0 | 0 | 0 | 0 |

TOTAL
* - started game

SEASON HIGHS

Saves:
CT:
GB:
CAREER HIGHS
Saves:
CT:
GB:

HONORS & AWARDS

44



Wynter Jock

Sophomore
Attack
5-8

Akwesasne, NY
Salmon River High School

| 2025 | G-A-P | Sh | SOG | GB | DC | CT |
|----------------------|-------|----|-----|----|----|----|
| *at Northwestern | 0-1-1 | 1 | 1 | 0 | 0 | 0 |
| vs. Central Michigan | 0-0-0 | 0 | 0 | 0 | 0 | 2 |
| vs. Eastern Michigan | 1-1-2 | 2 | 1 | 0 | 0 | 0 |
| vs. Clemson | 0-2-2 | 0 | 0 | 0 | 0 | 0 |
| at Duke | 0-0-0 | 1 | 1 | 0 | 0 | 0 |
| at Elon | 0-1-1 | 0 | 0 | 0 | 0 | 0 |
| vs. Boston College | 1-0-1 | 1 | 1 | 0 | 0 | 0 |
| at Cal | 0-0-0 | 0 | 0 | 0 | 0 | 0 |
| at UC Davis | 0-0-0 | 0 | 0 | 0 | 0 | 0 |
| vs. Harvard | 0-0-0 | 0 | 0 | 0 | 0 | 0 |
| at Syracuse | 0-0-0 | 0 | 0 | 0 | 0 | 0 |
| vs. North Carolina | 0-0-0 | 0 | 0 | 0 | 0 | 0 |
| vs. Stanford | 0-0-0 | 0 | 0 | 0 | 0 | 0 |
| at Pitt | 0-0-0 | 0 | 0 | 0 | 0 | 0 |
| vs. Louisville | 0-0-0 | 0 | 0 | 0 | 0 | 0 |

TOTAL
* - started game

SEASON HIGHS

Gls: 1, 2x, vs. Boston College (3/8/25)
Assts: 2 vs. Clemson (2/22/25)
Pts:2, 2x, vs. Clemson (2/22/25)
DC:
CT: 2 vs. Central Michigan (2/9/25)
GB:

CAREER HIGHS

Gls: 1, 2x, vs. Boston College (3/8/25)
Assts: 2 vs. Clemson (2/22/25)
Pts:2, 2x, vs. Clemson (2/22/25)
DC:
CT: 2 vs. Central Michigan (2/9/25)
GB:

HONORS & AWARDS



2025 Notre Dame Women's Lacrosse

55



Carson Didden

Freshman

Defense

5-5

Morristown, NJ

Oak Knoll School

| 2025 | G-A-P | Sh | SOG | GB | DC | CT | SEASON HIGHS |
|----------------------|-------|----|-----|----|----|----|-----------------|
| at Northwestern | 0-0-0 | 0 | 0 | 0 | 0 | 0 | Gls: |
| vs. Central Michigan | 0-0-0 | 0 | 0 | 0 | 0 | 0 | Assts: |
| vs. Eastern Michigan | 0-0-0 | 0 | 0 | 0 | 0 | 0 | Pts: |
| vs. Clemson | 0-0-0 | 0 | 0 | 0 | 0 | 0 | DC: |
| at Duke | 0-0-0 | 0 | 0 | 0 | 0 | 0 | CT: |
| at Elon | 0-0-0 | 0 | 0 | 0 | 0 | 0 | GB: |
| vs. Boston College | 0-0-0 | 0 | 0 | 0 | 0 | 0 | CAREER HIGHS |
| at Cal | 0-0-0 | 0 | 0 | 0 | 0 | 0 | Gls: |
| at UC Davis | 0-0-0 | 0 | 0 | 0 | 0 | 0 | Assts: |
| vs. Harvard | 0-0-0 | 0 | 0 | 0 | 0 | 0 | Pts: |
| at Syracuse | 0-0-0 | 0 | 0 | 0 | 0 | 0 | DC: |
| vs. North Carolina | 0-0-0 | 0 | 0 | 0 | 0 | 0 | CT: |
| vs. Stanford | 0-0-0 | 0 | 0 | 0 | 0 | 0 | GB: |
| at Pitt | 0-0-0 | 0 | 0 | 0 | 0 | 0 | HONORS & AWARDS |
| vs. Louisville | 0-0-0 | 0 | 0 | 0 | 0 | 0 | |
| TOTAL | | | | | | | |
| * - started game | | | | | | | |