



CENTRAL MICHIGAN

2025-26 WOMEN'S BASKETBALL

GAME NOTES | CHIPPEWAS AT #24/23 NOTRE DAME (NOV. 24, 9 PM ET)

2025-26 SCHEDULE

NOVEMBER (4-1)

Mon. 3	at Georgia Southern ^	L, 72-98
Sun. 9	Davenport	W, 71-44
Wed. 12	at Butler	W, 68-59
Wed. 19	at Detroit Mercy	W, 87-54
Sat. 22	Eastern Illinois	W, 60-54
Mon. 24	at No. 24/23 Notre Dame	9 pm
Sun. 30	Purdue	1 pm

DECEMBER (0-0)

Wed. 3	at No. 6/9 Michigan	7 pm
Sun. 7	at No. 20/18 Kentucky	Noon
Wed. 17	at Valparaiso	7 pm
Sat. 20	Northern Illinois*	1 pm
Wed. 31	Ohio*	1 pm

JANUARY (0-0)

Sat. 3	at Bowling Green*	2 pm
Wed. 7	Kent State*	11 am
Sat. 10	at Massachusetts*	1 pm
Sat. 17	Eastern Michigan*	1 pm
Wed. 21	at Akron*	6 pm
Sat. 24	at Western Michigan*	3:30 pm
Wed. 28	Ball State*	6:30 pm
Sat. 31	at Northern Illinois*	3 pm

FEBRUARY (0-0)

Wed. 4	at Buffalo*	11 am
Sat. 7	TBD ^	1 pm
Wed. 11	Akron*	6:30 pm
Sat. 14	Western Michigan*	TBA
Wed. 18	at Miami (OH)*	7 pm
Sat. 21	Massachusetts*	TBA
Wed. 25	at Toledo*	7 pm
Sat. 28	at Kent State*	1 pm

MARCH (0-0)

Wed. 4	Bowling Green*	6:30 pm
Wed. 11	MAC Quarterfinals	TBA
Fri. 13	MAC Semifinals	TBA
Sat. 14	MAC Championship	TBA

Home games listed in **BOLD**

All times **EASTERN**

* - Mid-American Conference Contest

^ - MAC-Sun Belt Challenge

LET THE GAUNLET BEGIN



CENTRAL MICHIGAN CHIPPEWAS

Mount Pleasant, Mich. | Mid-American Conference

4-1 (0-0 MAC) | 14-17 (9-9 MAC) in 2024-25



#24/23 NOTRE DAME FIGHTING IRISH

South Bend, Ind. | Atlantic Coast Conference

4-1 (0-0 ACC) | 28-6 (16-2 ACC) in 2024-25

GAME No. 6

Monday, November 24 • 9 p.m. ET

South Bend, Ind. • Joyce Center



BROADCAST: ACC Network | Tiffany Greene (pbp), Carolyn Peck (analyst), Derek Coleman (prod.), Peter Loomis (dir.)

RADIO: 91.5 WMHW | Austin Shattuck (pbp), Evan Furno (analyst), Lauren Stansbury (producer)

LIVE STATS: Stats.StatBroadcast.com/broadcast/?id=618897

SOCIAL MEDIA: Twitter/Instagram (@cmuwbball), Facebook (/CMUWBBall); Website (CMUChippewas.com)





MEDIA INFORMATION

Please coordinate all coach and player interview requests through Assistant Director of Communications **Harrison LaLone**. He can be reached at (989) 400-7445 or by email at lalon1h@cmu.edu. Please allow 24 hours of advanced notice in scheduling an interview.

WEBSITE

Media members are reminded that the official athletics website, **CMUChippewas.com**, contains updated player stats and bios. Also available on the site are video interviews, postgame highlights and press conferences.

VISITING RADIO

Ethernet ports are available for use by the official radio network of the visiting team. Visiting networks that wish to have additional lines installed at their own expense may do so by contacting CMU Telecommunications at (989) 774-1474.

VIDEO LIBRARY

The Athletic Communications Department maintains a vast library of video clips for distribution to requesting electronic media. In addition, postgame highlights and press conference cut-ups are available for download using the department's FTP server. Please contact Andrew Gerber (gerbe1aj@cmich.edu) for detailed instructions and requests.

MEDIA ROOM

The media room will be open prior to games this season and a meal and beverages will be served. Game notes and flip cards will be printed and available prior to each game. Central Michigan Head Coach Kristin Haynie and requested/selected student-athletes will be available in the Media Room.

CREDENTIALS/PARKING

Requests for media credentials and parking should be made via email at lalon1h@cmich.edu. Parking passes will be emailed via Paciolan.

PHOTO/VIDEO GUIDELINES

Photographers and videographers are limited to shooting from a seated position on the baseline. Once in position, photographers must remain there until halftime or the conclusion of the game.

CMU Contact: Harrison LaLone
E-Mail: lalon1h@cmich.edu
Cell: (989) 400-7445

CMU'S LAST LINEUP



Madi MORSON
So. | G | 5-8



Rylan BUSCHELL
Fr. | G | 5-6



Nekhu MITCHELL
Sr. | F | 6-0



Riley SMITH
So. | F | 6-0



Demetria PREWITT
Sr. | F | 5-10

2025-26 LINEUPS

Opponent	Date	1	2	3	4	5
at Georgia Southern	Nov. 3	Buschell (1)	Morson (1)	Mitchell (1)	Chevre (1)	Darrington (1)
Davenport	Nov. 9	Buschell (2)	Morson (2)	Mitchell (2)	Chevre (2)	Darrington (2)
at Butler	Nov. 12	Buschell (3)	Morson (3)	Mitchell (3)	Chevre (3)	Darrington (3)
at Detroit Mercy	Nov. 19	Buschell (4)	Morson (4)	Mitchell (4)	Prewitt (1)	Darrington (4)
Eastern Illinois	Nov. 22	Buschell (5)	Morson (5)	Mitchell (5)	Smith (1)	Prewitt (2)
at Notre Dame	Nov. 24					
Purdue	Nov. 30					
at Michigan	Dec. 3					
at Kentucky	Dec. 7					
at Valparaiso	Dec. 17					
Northern Illinois	Dec. 20					
Ohio	Dec. 31					
at Bowling Green	Jan. 3					
Kent State	Jan. 7					
at Massachusetts	Jan. 10					
Eastern Michigan	Jan. 17					
at Akron	Jan. 21					
at Western Michigan	Jan. 24					
Ball State	Jan. 28					
at Northern Illinois	Jan. 31					
at Buffalo	Feb. 4					
TBD	Feb. 7					
Akron	Feb. 11					
Western Michigan	Feb. 14					
at Miami (OH)	Feb. 18					
Massachusetts	Feb. 21					
at Toledo	Feb. 25					
at Kent State	Feb. 28					
Bowling Green	March 4					
MAC Quarterfinals	March 11					
MAC Semifinals	March 13					
MAC Championship	March 14					

TEAM INFORMATION

2024-25 Record	14-17
2024-25 MAC Record	9-9
Letterwinners Return/Loss	9/3
Starters Return/Loss	3/2
Newcomers	5: 2, 3, 10, 11, 21
Arena	McGuirk Arena (5,300)
Head Coach	Kristin Haynie (3rd season)

PROGRAM HISTORY

First Season	1967-68 (59th Season)
All-Time Record	762-751
All-Time MAC Record	372-367 (since '81-'82)
MAC Regular Season Titles	6 ('84, '85, '17, '18, '19, '20)
MAC Divisional Titles	6 ('14, '16, '17, '18, '19, '20)
MAC Tournament Titles	5 ('83, '84, '13, '18, '21)
NCAA Tournament Appearances	7* (2-6) *2020 Tournament Cancelled (COVID-19)
WNIT Appearances	5 (0-5)



LAST TIME OUT



**EASTERN ILLINOIS (0-5)
at CENTRAL MICHIGAN (4-1)**

**54
60**

**McGuirk Arena - Mount Pleasant, Mich.
Nov. 22, 2025**

Eastern Illinois - 54

Record: 0-5

NO.	Name	Min	FG	3P	FT	Rebounds	Fouls	TP	AS	TO	ST	Blocks	+/-
			M-A	M-A	M-A	OR DR TOT	PF FD					BS BA	
1	Ella Lune	F 30:17	2-4	0-2	2-3	0 4 4	5 2	6	0	4	2	0 0	-6
14	Meioshe Mason	F 19:23	1-2	0-0	0-0	0 4 4	2 2	2	1	1	0	0 0	-9
3	Ava Stoller	G 26:47	5-13	1-6	4-4	1 3 4	4 3	15	5	4	2	0 1	1
11	Clara Glad	G 36:27	1-5	1-3	0-0	1 6 7	3 3	3	2	2	1	2 0	-2
21	Tiny Lewis	G 33:00	4-10	2-7	3-3	0 2 2	3 3	13	1	3	0	0 0	6
25	Nyah Hardy	15:45	1-5	1-3	0-0	0 2 2	0 2	3	1	0	1	0 0	-12
50	Abbie Boutilier	20:36	3-7	0-0	1-2	1 5 6	4 1	7	1	2	0	0 0	3
2	Kennedy Davis	05:19	0-2	0-1	0-0	0 1 1	0 0	0	0	0	1	0 0	-7
10	Adriana Arroyo	07:50	1-4	0-2	0-0	1 0 1	1 0	2	0	2	0	0 0	-11
7	Liana Buckhalton	04:37	1-2	1-1	0-0	0 1 1	0 0	3	0	0	0	0 0	7
Team						1 0 1	0	0	0	0	0	0 0	
Totals			19-54	6-25	10-12	5 28 33	22 16	54	11	18	7	2 1	-6

Major Fouls: NONE

Shooting By Period		
1 st FG%	4-13	30.8%
3PT%	1-6	16.7%
FT%	0-0	0%
2 nd FG%	4-14	28.6%
3PT%	2-7	28.6%
FT%	0-0	0%
3 rd FG%	6-14	42.9%
3PT%	2-6	33.3%
FT%	2-4	50%
4 th FG%	5-13	38.5%
3PT%	1-6	16.7%
FT%	8-8	100%
GM FG%	19-54	35.2%
3PT%	6-25	24.0%
FT%	10-12	83.3%

Dead Ball Rebounds: 0, 0

Central Michigan - 60

Record: 4-1

NO.	Name	Min	FG	3P	FT	Rebounds	Fouls	TP	AS	TO	ST	Blocks	+/-
			M-A	M-A	M-A	OR DR TOT	PF FD					BS BA	
11	Nekhu Mitchell	F 34:50	1-9	0-3	4-4	1 6 7	1 3	6	3	5	0	0 0	2
12	Riley Smith	F 10:57	0-2	0-2	0-0	0 3 3	2 0	0	1	0	0	0 0	-1
23	Demetria Prewitt	F 23:29	8-10	0-0	1-2	1 1 2	2 1	17	1	1	3	1 0	4
0	Madi Morson	G 32:39	4-13	2-6	7-9	2 4 6	3 10	17	2	4	0	0 2	9
10	Rylan Buschell	G 29:32	2-4	0-0	1-1	1 4 5	3 2	5	3	2	1	0 0	-2
30	Jayda Mosley	15:11	2-7	2-7	0-0	0 5 5	0 3	6	1	2	0	0 0	7
24	Taylor Anderson	16:49	1-6	0-3	0-0	2 1 3	2 0	2	1	2	2	0 0	1
21	Zareia Chevre	29:54	3-8	0-0	1-2	2 5 7	2 3	7	1	3	1	0 0	5
40	Taylor Johnson	06:02	0-2	0-0	0-0	1 2 3	1 0	0	0	0	0	0 0	5
2	Lilah Turnbull	00:37	0-0	0-0	0-0	0 0 0	0 0	0	0	0	0	0 0	0
Team						4 1 5	0	0	0	0	0	0 0	
Totals			21-61	4-21	14-18	14 32 46	16 22	60	13	19	7	1 2	6

Major Fouls: NONE

Shooting By Period		
1 st FG%	6-15	40.0%
3PT%	2-7	28.6%
FT%	4-4	100%
2 nd FG%	3-17	17.6%
3PT%	2-7	28.6%
FT%	3-3	100%
3 rd FG%	6-15	40.0%
3PT%	0-4	0.0%
FT%	0-1	0%
4 th FG%	6-14	42.9%
3PT%	0-3	0.0%
FT%	7-10	70%
GM FG%	21-61	34.4%
3PT%	4-21	19.0%
FT%	14-18	77.8%

Dead Ball Rebounds: 2, 0

	EIU	CMU
Biggest lead	3 (1 st 8:14)	15 (2 nd 4:20)
Best Scoring Run	6 (2 nd 1:48)	16 (2 nd 5:55)
Lead Changes	2	
Times Tied	3	
Time with Lead	01:42	35:57

Points from	EIU	CMU
Turnovers	20	13
Paint	20	32
Second Chance	2	13
Fast Breaks	5	4
Bench	15	15

Period by Period Scoring					
	1st	2nd	3rd	4th	TOT
EIU	9	10	16	19	54
CMU	18	11	12	19	60

Prewitt Muscles in Career Outing as Chippewas Halt Eastern Illinois, 60-54

MOUNT PLEASANT, Mich. — "We can still win with our defense."

Three days removed from the highest-scoring game of the **Kristin Haynie** era, Central Michigan Women's Basketball hosted Eastern Illinois for a battle of defenses on Saturday, a 60-54 victory.

Demetria Prewitt posted a career-high 17 points, eight-for-10 from the field, to go with three steals, a block and two rebounds. Nine of those points (4-4 FG) and all but one steal and one rebound were recorded in a pivotal fourth quarter that saw the Panthers draw back to within a possession, with as little as 18 seconds to go.

"I'm really proud of Meachie [Prewitt]," Haynie said. "Confidence comes from preparation. She was prepared for the down low action when she got the ball."

The second-year Chippewa senior recorded her block with 11 seconds left against a three-pointer with the Chippewas up, 59-54, while the steal was tallied less than 30 seconds earlier in a four-point game, 56-52.

Listed at five-foot-10 on the roster, Prewitt was faced with two key matchups ahead of the contest: six-foot-four Meioshe Mason and six-foot-10 Abbie Boutilier. The pair of Panther centers combined for nine points, 10 rebounds in 40 minutes played.

"She's very versatile; she can play in, she can play out. She had 6'10" and 6'3" players guarding her and she's six-foot, if that. She had a really good game."

The Central Michigan defense stood tall early as it shut out Eastern Illinois for more than 12 minutes of the first half. The Panthers scored with 6:24 in the first quarter to take a 9-7 lead—it took until 4:33 left in the second for them to see the ball go through the net again.

"We talk about playing one possession at a time, playing championship defense. We missed some bunnies on the offensive end, but we didn't let that affect our defense."

The Chippewas scored 16 points in the process.

"Our players have been very good at locking in on the scouting report and knowing what to do on each player. I attribute that to their mindset of staying focused and not taking plays off."

The Chippewa breakaway was fueled by 10 of **Madi Morson's** 17 points, tied with Prewitt for the game high.

Another key facet for the defense was **Rylan Buschell's** execution against Eastern Illinois's Ava Stoller. The Panther guard posted a 25-point performance at Purdue earlier in the month and boasted a 55 percent three-point shooting clip prior to Saturday's contest.

"Rylan's crushing it, that's why we recruited her. She plays on both sides of the ball; she's a pest on the ball. The goal was to make her [Stoller] frantic"

Stoller finished five-for-13 from the field, one-of-six from beyond the arc, and was forced in and out of the contest with foul trouble as she finished with four.

THE CHIPPEWA NAME

The Central Michigan University Board of Trustees has approved the continued use of the nickname "Chippewas" in association with CMU. The university's goals are to use the name with honor and respect, increase supportive connections between CMU and Native Americans, and improve efforts to sensitize students, faculty, and staff to Native American traditions and cultures.

Media representatives have been extremely cooperative as we have worked to address this important issue. In nearly all cases, print and broadcast reporters have supported CMU's efforts to eliminate the use of symbols, headlines, and copy that present inappropriate and inaccurate images of Native Americans.

Central Michigan University is grateful for your help, and we ask for your continued cooperation and sensitivity. With your assistance, we can continue to use the Chippewa name with dignity and respect.

CMU QUICK FACTS

Location	Mount Pleasant, Mich.
Enrollment	15,465
Founded	1892
Nickname	Chippewas
Colors	Maroon and Gold
Venue	McGuirk Arena
Conference	Mid-American
Affiliation	NCAA Division I
President	Dr. Neil MacKinnon
Athletics Director	Amy Folan
Head Coach	Kristin Haynie
Website	www.cmuchippewas.com
Twitter	@CMUWBBall
Instagram	@cmuwbball
Facebook	facebook.com/CMUWBBall

UPCOMING CMU ATHLETICS EVENTS

All times **EASTERN**

TUESDAY, NOVEMBER 25

MBB vs. Adrian, 7 p.m.

SATURDAY, NOVEMBER 29

FB vs. Toledo*, Noon

SUNDAY, NOVEMBER 30

WBB vs. Purdue, 1 p.m.

TUESDAY, DECEMBER 2

MBB at Loyola Chicago, 8 p.m.

WEDNESDAY, DECEMBER 3

WBB at Michigan, 7 p.m.

FRIDAY, DECEMBER 5

T&F at Holiday Open (Grand Valley)

WRE at Indiana, 7 p.m.

SATURDAY, DECEMBER 6

T&F at Colyear-Danville Opener (Boston U)



GAME NOTES | NOVEMBER 24 AT #24/23 NOTRE DAME

HEAD-TO-HEAD COMPARISON



CENTRAL MICHIGAN
4-1; 0-0 MAC



NOTRE DAME
4-1; 0-0 ACC

CMU/OPP.	PER GAME	ND/OPP.
71.6/61.8	POINTS	82.8/64.0
.435/.400	FG%	.456/.447
26.6/22.0	FG MADE	29.8/25.2
.341/.308	3PT%	.267/.341
5.6/6.4	3PT MADE	5.4/5.6
.696/.633	FT%	.788/.678
12.8/11.4	FT MADE	17.8/8.0
43.0/29.6	REBOUNDS	36.4/31.8
14.2/11.6	ASSISTS	13.4/11.0
17.2/15.8	TURNOVERS	15.0/25.4
7.4/7.8	STEALS	17.6/8.6
1.6/3.8	BLOCKS	4.0/4.0

Notre Dame Series (ND 5-1)

Date	W/L	CMU	ND	Day	Location
11/11/2016	L	47	107	Fri.	South Bend, IN
12/22/2013	L	72	106	Sun.	South Bend, IN
11/29/2012	L	63	72	Thu.	Mount Pleasant, MI
11/20/2007	L	41	94	Tue.	Mount Pleasant, MI
11/10/2006	L	68	88	Fri.	South Bend, IN
12/21/1983	W	72	69	Wed.	South Bend, IN

THE SERIES - NOTRE DAME, THE AP POLL

Central Michigan and Notre Dame square off for the seventh time Monday night. The Fighting Irish hold a 5-1 advantage, with CMU's lone win coming in the first matchup in 1983; the other five have come since 2006.

Monday will be the fifth straight meeting in which Notre Dame is ranked in the latest AP poll, having been in the top five in each of the previous three meetings.

CMU is 7-42 all-time against AP-ranked teams at the time of competition, though 7-17 since the start of the 2010-11 season. The Chippewas have won three of their last 10 meetings against ranked teams, all of which came in calendar year 2018 including two in the program's Elite Eight run.

LAST TIME VS...



CENTRAL MICHIGAN
at #1 NOTRE DAME

47
107

Joyce Center - South Bend, Ind.
Nov. 11, 2016

Official Basketball Box Score -- Game Totals -- Final Statistics
Central Michigan vs Notre Dame
11/11/16 7:00 pm at Purcell Pavilion at the Joyce Center

Central Michigan 47 • 0-1

#	Player	Total		3-Ptr		Rebounds			PF	TP	A	TO	Blk	Stl	Min
		FG-FGA	FG%	FG-FGA	FG%	Off	Def	Tot							
02	Tinara MOORE	f	5-10	0-0	0-0	0	1	1	2	10	3	1	0	2	32
20	Jewel COTTON	f	2-8	0-0	3-4	2	1	3	4	7	1	1	1	0	20
03	Presley HUDSON	g	2-9	0-6	0-0	0	2	2	4	4	4	5	0	0	29
10	Cassie BREEN	g	2-13	2-10	2-2	0	2	2	5	8	0	2	0	1	24
14	Amani CORLEY	g	0-3	0-1	1-4	0	2	2	0	1	3	4	0	1	17
00	Jasmine HARRIS	g	0-4	0-4	0-0	1	1	2	1	0	1	2	0	1	9
05	Aleah SWARY	g	5-11	5-10	0-0	1	2	3	1	15	0	1	0	1	22
13	Reyna FROST	g	1-3	0-0	0-0	6	5	11	2	2	0	2	0	1	34
23	Aaliah HILL	g	0-0	0-0	0-2	2	2	4	0	0	0	0	0	0	11
33	Gabrielle BIRD	g	0-2	0-2	0-0	0	0	0	1	0	0	1	0	0	2
	Team					2	1	3							
	Totals		17-63	7-33	6-12	14	19	33	20	47	12	20	1	7	200

1st - FG %:	3-13	23.1%	2nd: 5-20	25.0%	3rd: 3-13	23.1%	4th: 6-17	35.3%	Game: 17-63	27.0%	Deadball
3FG %:	2-9	22.2%	0-7	0.0%	2-6	33.3%	3-11	27.3%	7-33	21.2%	Rebounds
FT %:	1-6	16.7%	1-2	50.0%	0-0	0.0%	4-4	100.0%	6-12	50.0%	3

Notre Dame 107 • 1-0

#	Player	Total		3-Ptr		Rebounds			PF	TP	A	TO	Blk	Stl	Min
		FG-FGA	FG%	FG-FGA	FG%	Off	Def	Tot							
11	Brianna Turner	f	5-8	0-0	2-4	2	1	3	1	12	1	2	0	0	20
33	Kathryn Westbeld	f	3-4	0-1	0-0	0	4	4	2	6	1	1	0	0	15
14	Mychal Johnson	g	2-4	1-2	2-2	0	2	2	3	7	4	0	1	4	27
15	Lindsay Allen	g	6-8	1-2	0-0	0	5	5	0	13	8	0	0	4	19
24	Arike Ogunbowale	g	12-13	5-5	1-1	1	2	3	1	30	2	1	0	2	23
03	Marina Mabrey	g	4-8	3-7	6-7	1	2	3	2	17	5	2	1	1	26
20	Ali Patberg	g	0-0	0-0	0-0	0	3	3	1	0	3	0	0	0	14
21	Kristina Nelson	g	4-10	0-0	0-0	4	5	9	2	8	2	1	1	2	20
22	Erin Boley	g	2-6	2-5	2-2	1	1	2	2	8	3	1	0	0	25
35	Diamond Thompson	g	2-4	0-0	2-5	0	2	2	4	6	0	3	0	0	11
	Team					1	8	9							
	Totals		40-65	12-22	15-21	10	35	45	18	107	29	11	3	13	200

1st - FG %:	13-17	76.5%	2nd: 9-14	64.3%	3rd: 10-19	52.6%	4th: 8-15	53.3%	Game: 40-65	61.5%	Deadball
3FG %:	4-7	57.1%	3-5	60.0%	1-3	33.3%	4-7	57.1%	12-22	54.5%	Rebounds
FT %:	5-7	71.4%	0-2	0.0%	4-5	80.0%	6-7	85.7%	15-21	71.4%	2

Officials: Mark Berger, Erika Herriman-Camarota, Thurman leggs Jr.
Technical fouls: Central Michigan-None. Notre Dame-None.
Attendance: 8454
Preseason WNIT First Round

Score by periods	1st	2nd	3rd	4th	Total
Central Michigan	9	11	8	19	47
Notre Dame	35	21	25	26	107

	In	Off	2nd	Fast	Bench
Points			Chance	Break	
CMU	16	10	7	2	17
ND	46	31	11	8	39

Top-ranked Irish Too Much for Chippewas

SOUTH BEND, Ind. - Best part about it?

"We don't have to play them anymore," CMU women's basketball coach Sue Guevara said after her Chippewas lost, 107-47, Friday to the nation's top-ranked team, Notre Dame, in the season opener for both teams.

"We couldn't do anything," Guevara said. "They're bigger, they're more physical, they outweigh us. I thought that we came out very, very tight. When you have three starters in the first five minutes pick up two fouls each, we're going to be in trouble."

Notre Dame raced to a 15-0 lead just over three minutes after the opening tip and the Chippewas never seriously threatened a team that returned three starters including two-time All-American Brianna Turner from a team that won the Atlantic Coast Conference and finished 33-2 a year ago.

CMU, picked in the preseason poll to win the Mid-American Conference, got a career-high 15 points from Aleah Swary and 11 rebounds, including six on the offensive end, from Reyna Frost.

They were two of the individual bright spots for CMU, which made just seven of its 33 3-point tries (21.2 percent) and finished 17-for-63 (27 percent) from the field overall. By comparison, the Chippewas knocked down 34.2 percent of their triple-tries and 42.1 percent of their overall field goal attempts last season.

Tinara Moore added 10 points for CMU.

Arike Ogunbowale scored 30 points on 12-of-13 shooting to lead the Irish, who had four players finish in double figures and made 61.5 percent of their field goal attempts.

"We knew it was going to be a battle coming in," Guevara said. "They're just really good. I talked to our kids about battling; just make sure that we battled. For the most part we did."

Guevara, who is in her 10th year in charge of the CMU program, has routinely put past teams in these types of early season situations: A ranked opponent on that opponent's home floor.

Friday's game marked the first time in CMU program history that it had played the No. 1-ranked team, and the game played out before 8,454 fans at Notre Dame's Purcell Pavilion.

"I told the kids it's going to be a long season and it's just the first game - the first mile of a marathon, and we just ran it really slow," said Guevara, whose team was picked to win the Mid-American Conference. "It's the first game and we got it handed to us by the No. 1 team in the country."

"They'll come back. This has happened to us in the past. They're pretty resilient. They come to practice and they come ready. That part I'm not worried about. They'll come back hard and I know they're going to come back to play."



W-L TRENDS

MARGINS	25-26	24-25	Haynie
3 pts. or less	0-0	3-2	4-6
4-9 pts.	2-0	4-5	9-10
10+ pts.	2-1	6-10	10-24
Lead at half	4-0	10-5	19-10
Tied at half	0-0	0-1	1-1
Trail at half	0-1	4-11	4-29
Lead with 5:00 to go (reg.)	4-0	11-3	20-7
Tied with 5:00 to go (reg.)	0-0	0-0	0-0
Trail with 5:00 to go (reg.)	0-1	3-14	4-33

OVERALL SCORING	25-26	24-25	Haynie
CMU 90+	0-0	0-0	0-0
CMU 80-89	1-0	1-0	3-0
CMU 70-79	1-1	7-2	9-4
CMU 60-69	2-0	3-7	8-16
CMU under 60	0-0	3-8	4-20
CMU scores first	3-0	7-7	15-17
Opp. scores first	1-1	7-10	9-23

SHOOTING	25-26	24-25	Haynie
CMU ≥50%	1-1	1-0	2-1
CMU <50%	3-0	13-17	22-39
CMU makes more 3s	2-0	5-6	10-12
Made 3s are even	0-0	1-0	1-2
Opp. make more 3s	2-1	8-11	13-26
CMU makes more FTs	3-1	11-2	17-8
FTs are even	0-0	0-1	0-3
Opp. make more FTs	1-0	3-14	7-29

BENCH/PAINT SCORING	25-26	24-25	Haynie
CMU's bench outscored opp's	3-0	9-9	17-19
Bench points are even	1-0	3-0	4-1
Opp. bench outscored CMU's	0-1	2-8	3-20
CMU has more paint points	4-1	9-8	17-15
Paint points even	0-0	0-0	0-2
Opponent has more paint points	0-0	5-9	7-23

REBOUNDING	25-26	24-25	Haynie
CMU outrebounds Opp.	4-1	14-11	24-26
Rebounds are even	0-0	0-1	0-1
CMU is outrebounded	0-0	0-5	0-13

SCHEDULE	25-26	24-25	Haynie
Monday	0-1	0-1	0-2
Tuesday	0-0	0-0	1-0
Wednesday	2-0	6-5	10-12
Thursday	0-0	0-1	0-2
Friday	0-0	1-0	1-0
Weekday games	2-1	7-7	12-17
Saturday	1-0	5-6	8-17
Sunday	1-0	2-4	4-6
Weekend games	2-0	7-10	12-23
November games	4-1	1-5	6-10
December games	0-0	3-2	3-6
January games	0-0	4-5	8-11
February games	0-0	4-3	5-8
March games	0-0	2-2	2-5

VENUE	25-26	24-25	Haynie
Home	2-0	7-7	12-16
Away	2-1	6-8	11-22
Neutral	0-0	1-2	1-2

LAST TIME THE CHIPPEWAS...

OVERTIME	DATE	OPPONENT	RESULT	STAT
Played in overtime	3/5/2025	at Miami (OH)	W, 69-66 (ot)	
Played in multiple OTs	2/28/2024	Miami (OH)	W, 76-73 (2ot)	
Overtime win	3/5/2025	at Miami (OH)	W, 69-66 (ot)	
Overtime loss	2/26/2025	Ball State	L, 58-60 (ot)	
POINTS	DATE	OPPONENT	RESULT	STAT
Fewer than 50 pts.	1/8/2025	Miami (OH)	W, 47-46	47
70-plus pts.	11/19/2025	at Detroit Mercy	W, 87-54	87
80-plus pts.	11/19/2025	at Detroit Mercy	W, 87-54	87
90-plus pts.	3/12/2021	Ohio (MAC Tourn.)	W, 100-92 (ot)	100
100-plus pts.	3/12/2021	Ohio (MAC Tourn.)	W, 100-92 (ot)	100
Opp. 100-plus pts.	1/11/2023	at Bowling Green	L, 68-101	101
Opp. fewer than 50 pts.	11/9/2025	Davenport	W, 71-44	44
REBOUNDS	DATE	OPPONENT	RESULT	STAT
25 or fewer reb.	11/26/2021	at Northeastern	L, 57-63	25
40-plus reb.	11/22/2025	Eastern Illinois	W, 60-54	46
50-plus reb.	11/19/2025	at Detroit Mercy	W, 87-54	50
60-plus reb.	11/22/2016	Oakland	W, 70-67 (OT)	64
ASSISTS	DATE	OPPONENT	RESULT	STAT
15-plus ast.	11/19/2025	at Detroit Mercy	W, 87-54	22
20-plus ast.	11/19/2025	at Detroit Mercy	W, 87-54	22
25-plus ast.	2/1/2020	Ohio	W, 92-90	25
30-plus ast.	11/12/2010	North Carolina A&T (N)	W, 119-71	31
DEFENSE	DATE	OPPONENT	RESULT	STAT
5-plus blocks	2/15/2025	at Bowling Green	L, 55-70	5
10-plus blocks	2/17/2018	Eastern Michigan	W, 95-82	10
Fewer than 5 steals	11/19/2025	at Detroit Mercy	W, 87-54	4
10-plus steals	11/12/2025	at Butler	W, 68-59	14
FIELD GOALS	DATE	OPPONENT	RESULT	STAT
Fewer than 20 made	1/8/2025	Miami (OH)	W, 47-46	18
30-plus made	11/19/2025	at Detroit Mercy	W, 87-54	33
40-plus made	2/22/2017	Northern Illinois	W, 109-86	42
Fewer than 40 att.	2/15/2017	at Ohio	W, 70-64	39
60-plus att.	11/22/2025	Eastern Illinois	W, 60-54	61
70-plus att.	2/26/2025	Ball State	L, 58-60 (ot)	84
80-plus att.	2/26/2025	Ball State	L, 58-60 (ot)	84
Less than 30%	2/26/2025	Ball State	L, 58-60 (ot)	.262 (22-84)
50%-plus	11/19/2025	at Detroit Mercy	W, 87-54	.541 (33-61)
60%-plus	1/27/2021	at Toledo	W, 83-74	.630 (34-54)
3PT FIELD GOALS	DATE	OPPONENT	RESULT	STAT
10-plus made	11/19/2025	at Detroit Mercy	W, 87-54	13
15-plus made	2/18/2023	at Ohio	L, 75-83	15
18-plus made (record)	11/30/2013	Xavier (N)	W, 88-62	18
20-plus att.	11/22/2025	Eastern Illinois	W, 60-54	21
30-plus att.	2/5/2025	Ohio	W, 75-48	30
40-plus att.	1/1/2022	Northern Illinois	W, 72-68	42
Fewer than 10 att.	11/3/2025	at Georgia Southern	L, 72-98	7
40%-plus (min. 10 att.)	11/19/2025	at Detroit Mercy	W, 87-54	.520 (13-25)
50%-plus (min. 10 att.)	11/19/2025	at Detroit Mercy	W, 87-54	.520 (13-25)
60%-plus (min. 10 att.)	3/8/2025	Akron	W, 70-61	.625 (10-16)
FREE THROWS	DATE	OPPONENT	RESULT	STAT
20-plus made	2/8/2025	at Marshall	W, 73-68	21
25-plus made	12/18/2022	at Eastern Illinois	L, 67-78	27
30-plus made	1/7/2017	Buffalo	W, 88-71	37
fewer than 10 made	11/19/2025	at Detroit Mercy	W, 87-54	8
25-plus att.	11/9/2025	Davenport	W, 71-44	29
30-plus att.	1/25/2025	at Western Michigan	W, 81-70	32
35-plus att.	1/22/2020	at Eastern Michigan	W, 89-82	35
40-plus att.	1/7/2017	Buffalo	W, 88-71	41
fewer than 10 att.	3/9/2024	Akron	L, 57-65	7
70%-plus (min. 10 att.)	11/22/2025	Eastern Illinois	W, 60-54	.778 (14-18)
80%-plus (min. 10 att.)	11/19/2025	at Detroit Mercy	W, 87-54	.800 (8-10)
90%-plus (min. 10 att.)	3/12/2025	Toledo (MAC Tourn.)	L, 58-76	1.000 (12-12)
Less than 60% (min. 10 att.)	11/9/2025	Davenport	W, 71-44	.517 (15-29)
Less than 50% (min. 10 att.)	1/8/2025	Miami (OH)	W, 47-46	.438 (7-16)
FOULS	DATE	OPPONENT	RESULT	STAT
Fewer than 10	1/8/2025	Miami (OH)	W, 47-46	7
15-plus	11/22/2025	Eastern Illinois	W, 60-54	16
20-plus	11/9/2025	Davenport	W, 71-44	20
30-plus	11/12/2022	at Oakland	L, 60-71	31
TURNOVERS	DATE	OPPONENT	RESULT	STAT
Fewer than 5	2/21/2018	Northern Illinois	W, 91-77	4
Fewer than 10	2/25/2023	at Northern Illinois	L, 80-84	9
Fewer than 15	11/9/2025	Davenport	W, 71-44	13
20-plus	3/12/2025	Toledo (MAC Tourn.)	L, 58-76	20
25-plus	12/8/2024	at No. 19/20 Iowa State	L, 56-82	26
30-plus	1/4/2025	at Ball State	L, 61-72	31



LAST TIME A CHIPPEWA...

POINTS	DATE	OPPONENT	RESULT	PLAYER(S)
20-plus pts.	11/19/2025	at Detroit Mercy	W, 87-54	Morson (21)
25-plus pts.	11/3/2025	at Georgia Southern	L, 72-98	Morson (31)
30-plus pts.	11/3/2025	at Georgia Southern	L, 72-98	Morson (31)
35-plus pts.	12/14/2019	at South Dakota State	W, 79-74	Micaela Kelly (38)
40-plus pts. (record)	1/11/2017	Ball State	W, 101-92	Presley Hudson (43)
Opp. 20-plus pts.	11/3/2025	at Georgia Southern	L, 72-98	Destiny Garrett (22), McKenna Eddings (20)
2x Opp. 20-plus pts.	11/3/2025	at Georgia Southern	L, 72-98	Destiny Garrett (22), McKenna Eddings (20)
Opp. 25-plus pts.	11/24/2024	Oakland	L, 65-76	Maddy Skorupski (28)
Opp. 30-plus pts.	1/17/2024	Ball State	L, 47-79	Ally Becki (36)
Opp. 35-plus pts.	1/17/2024	Ball State	L, 47-79	Ally Becki (36)
Opp. 40-plus pts.	1/25/2023	Ohio	W, 69-66	Yaya Felder (40)
REBOUNDS	DATE	OPPONENT	RESULT	PLAYER(S)
10-plus reb.	11/9/2025	Davenport	W, 71-44	Darrington (11)
Two 10-plus reb.	3/5/2025	at Miami (OH)	W, 69-66 (ot)	Darrington (16), Jess Lawson (12)
15-plus reb.	3/5/2025	at Miami (OH)	W, 69-66 (ot)	Darrington (16)
20-plus reb.	2/26/2025	Ball State	L, 60-58 (ot)	Darrington (21)
24-plus reb. (record)	12/29/1979	v. Wisc.-Green Bay	W, 81-61	Julie Roberts (24)
ASSISTS	DATE	OPPONENT	RESULT	PLAYER(S)
Five-plus ast.	11/19/2025	at Detroit Mercy	W, 87-54	Mitchell (6)
Seven-plus ast.	2/5/2025	Ohio	W, 75-48	Jess Lawson (10)
Double-digit ast.	2/5/2025	Ohio	W, 75-48	Jess Lawson (10)
12-plus ast.	12/29/2021	at Buffalo	L, 75-92	Molly Davis (12)
13-plus ast. (record)	2/21/2018	Northern Illinois	W, 91-77	Presley Hudson (13)
DEFENSE	DATE	OPPONENT	RESULT	PLAYER(S)
Three-plus blocks	1/8/2025	Miami (OH)	W, 47-46	Prewitt (3)
Five-plus blocks	3/9/2024	Akron	L, 57-65	Rochelle Norris (6)
Eight-plus blocks	2/17/2018	Eastern	W, 95-82	Tinara Moore (8)
Nine-plus blocks (record)	2/22/2017	Northern Illinois	W, 109-86	Tinara Moore (9)
Three-plus steals	11/22/2025	Eastern Illinois	W, 60-54	Prewitt (3)
Five-plus steals	11/9/2023	at South Alabama	L, 55-77	Taylor Anderson (5)
Seven-plus steals	2/6/2021	at Western Michigan	W, 74-71	Micaela Kelly (7)
10-plus steals (record)	12/18/2010	Ole Miss	W, 82-66	Kaihla Szunko (10)
DOUBLE-DOUBLES	DATE	OPPONENT	RESULT	PLAYER(S)
Pts-Rebs Double-Double	11/9/2025	Davenport	W, 71-44	Darrington (15p, 11r)
20pts-10reb	3/1/2025	at Toledo	L, 70-80	Darrington (23p, 13r)
15pts-15rebs	1/29/2025	at Northern Illinois	L, 75-80	Jess Lawson (17p, 18r)
20pts-20rebs	2/20/2019	at Bowling Green	W, 92-54	Reyna Frost (21p, 20r)
30pts-20rebs	2/13/2019	at Western Michigan	W, 87-53	Reyna Frost (33p, 20r)
Pts-Ast Double-Double	2/5/2025	Ohio	W, 75-48	Jess Lawson (10p, 11r, 10a)
20Pts-10Ast	1/1/2022	Northern Illinois	W, 72-68	Molly Davis (32p, 10a)
Two w/ Double-Double	2/5/2025	Ohio	W, 75-48	Darrington (21p, 12r), Jess Lawson (10p, 11r, 10a)
Three w/ Double-Double	12/9/2023	at Oakland	L, 76-79	Rochelle Norris (17p, 12r), Nadege Jean (11p, 12r), Taylor Anderson (11p, 10r)
Triple-Double	2/5/2025	Ohio	W, 75-48	Jess Lawson (10p, 11r, 10a)
DOUBLE-DIGIT SCORING	DATE	OPPONENT	RESULT	PLAYER(S)
Three-plus in double-digits	11/19/2025	at Detroit Mercy	W, 87-54	Morson (21), Mitchell (17), Darrington (16)
Four-plus in double-digits	11/12/2025	at Butler	W, 68-59	Morson (14), Mitchell (12), Darrington (10), Chevre (10), Prewitt (10)
Five-plus in double-digits	11/12/2025	at Butler	W, 68-59	Morson (14), Mitchell (12), Darrington (10), Chevre (10), Prewitt (10)
Two with 20-plus	3/1/2025	at Toledo	L, 70-80	Darrington (23), Morson (21)
30-plus, 20-plus	1/1/2022	Northern Illinois	W, 72-68	Molly Davis (32), Tiana Timpe (20)
Two with 30-plus	3/12/2021	v. Ohio	W, 100-92 (ot)	Molly Davis (33), Micaela Kelly (31)



MEACHIE VS. GOLIATH

Demetria Prewitt came through in the clutch in CMU's 60-54 victory over Eastern Illinois (Nov. 22). She finished with a career-high 17 points (8-of-10 FG) to go with three steals and a block. Nine points, two steals and the block were all recorded in the fourth quarter—a steal and a block in the final two trips down to the defensive end to seal the win.

The five-foot-10 Prewitt has started roughly half of CMU's games since she transferred in prior to 2024-25, predominantly as a four and occasionally rotating as the five. Her matchups for the EIU victory checked in at six-foot-four and six-foot-10—the Panther bigs combined for nine points, 10 rebounds over 40 minutes played.

CMU vs. RANKED TEAMS

As the Chippewas embark on a stretch of four games that looks to feature three nationally ranked teams, here's how they have stacked up against teams appearing the AP poll (1976-present).

CMU is 7-42 all-time against AP-ranked teams, however all seven victories have been logged since 2010 (7-17). Three of those victories have been in the last 10 opportunities: CMU's run to the 2018 Elite Eight netted wins over No. 24 LSU and at No. 10 Ohio State; the Chippewas defeated No. 24 Miami (FL), 90-80, the following December.

vs. AP Top 25 (7-42)

Date	W/L	CMU	OPP	Day	Opponent
12/8/2024	L	56	82	Sun.	#19 Iowa State
11/20/2021	L	45	69	Sat.	#13 Michigan
11/9/2021	L	40	74	Tue.	#17 Georgia Tech
11/25/2020	L	75	93	Wed.	#25 Michigan
11/14/2019	L	63	76	Thu.	#9 Louisville
12/30/2018	W	90	80	Sun.	#24 Miami (FL)
12/20/2018	L	68	72	Thu.	#3 Louisville
3/24/2018	L	69	83	Sat.	#6 Oregon
3/19/2018	W	95	78	Mon.	#10 Ohio State
3/17/2018	W	78	69	Sat.	#24 LSU
11/11/2016	L	47	107	Fri.	#1 Notre Dame
12/20/2014	L	45	80	Sat.	#1 South Carolina
11/22/2014	L	68	71	Sat.	#13 Kentucky
12/28/2013	L	97	109	Sat.	#17 Purdue
12/22/2013	L	72	106	Sun.	#4 Notre Dame
11/29/2013	L	64	97	Fri.	#2 Duke
11/17/2013	L	74	96	Sun.	#7 Kentucky
3/15/2013	W	66	61	Fri.	#25 Toledo
12/30/2012	W	73	65	Sun.	#20 Texas
12/2/2012	L	71	87	Sun.	#14 Purdue
11/29/2012	L	63	72	Thu.	#5 Notre Dame
12/11/2011	W	75	62	Sun.	#12 Purdue
11/21/2010	L	79	90	Sun.	#22 Iowa
11/12/2010	W	119	71	Fri.	#15 North Carolina
12/28/2009	L	83	94	Mon.	#17 Texas

PITCHING A SHUTOUT (Eastern Illinois, Nov. 22)

After a highlight offensive performance in the **Kristin Haynie** era at Detroit Mercy (Nov. 19), the offensive well ran dry at home against Eastern Illinois, a 60-54 victory. The defense stood up to shut out the Panthers for over 12 minutes of the first half, forcing EIU to go 0-for-15 from the field with four turnovers. Central Michigan scored 16 points during the Panther drought, 10 of which were collected by **Madi Morson**.

THE FIVE WORDS

Keep an eye on the table when there's a stoppage, and you'll find CMU's incoming subs will have a towel in hand ready to pass to their outbound teammate. Each towel has one of the five words the program subscribes to: *Urgency, Toughness, Grit, Communication* and *Sisters*. These words also appear in artwork posted in the team's locker room in McGuirk Arena.

STARTING A STREAK?

CMU had not won a third consecutive game since the 2021 MAC Tournament, having lost in each of its last eight opportunities, prior to the 87-54 victory at Detroit Mercy (Nov. 19). Under Head Coach **Kristin Haynie**, the Chippewas had six of those chances, five in 2024-25. Untimely scheduling stood in the way three times last season: at No. 19 Iowa State, an overtime loss to MAC champ Ball State and the first-round matchup with second seed Toledo.

MITCHELL'S ACCLIMATION

The new offensive weapon has arrived. **Nekhu Mitchell** has achieved in her projected role thus far since joining the Chippewas for her senior season. With the usual performances from Morson and Darrington by her side, Mitchell posted 17 points (three shy of her career high) and six assists (a career high) in the milestone offensive output under Head Coach **Kristin Haynie** at Detroit Mercy (Nov. 19).

CHIPPEWAS FINDING SUCCESS IN UNFAMILIAR CONFINES

With back-to-back road, nonconference victories at Butler (Nov. 12; 68-59) and at Detroit Mercy (Nov. 19; 87-54), Central Michigan has won three of its last four such contests.

CMU's four road nonconference wins in the last seven attempts have all come in relatively unfamiliar territory. Nevada was a first-time opponent, while the Chippewas had not seen Marshall (2/8/25), Butler or Detroit Mercy since at least 2005.

Since winning the 2021 MAC Championship tournament, the Chippewas are 6-18 in such contests, including 14 straight losses from Dec. 1, 2021 until Nov. 29, 2024 at Nevada. For context, the program logged a program-worst 17-game losing streak overall from Jan. 29-Nov. 25, 2022 prior to Haynie's hire, the first skid for the program to reach double-digits since 2003-04.

NEW WEAPON UNLOCKED?

Defense and rebounding: the staples of the **Kristin Haynie** era thus far. To Detroit Mercy's (Nov. 19) surprise, the Chippewas blindsided the Titans with a 13-for-25 performance from beyond the arc in an 87-54 victory, including an eight-for-10 start.

Over a period of 5:28, CMU posted a 23-4 run to balloon from an 11-9 advantage to 34-13 with 7:36 to go in the second quarter. The Chippewas hit six-of-seven from beyond the arc, collected between four different players—**Madi Morson** and **Jayda Mosley** each tallied a pair.

A TITAN EFFORT FOR THE CHIPPEWAS (at Detroit Mercy, Nov. 19)

Central Michigan toppled Detroit Mercy, 87-54, on November 19 to collect both the largest total (87; most in regulation since 1/23/21) and widest margin of victory (33; tied for widest since 2/20/19) in the **Kristin Haynie** era. A strong three-point shooting performance led the way as the Chippewas opened the contest 8-for-10 from deep and a 23-4 run. **Madi Morson** (21), **Nekhu Mitchell** (17) and **Ayanna-Sarai Darrington** (16) all finished in double-digits scoring. Each posted a double-digit total in the single quarter: Morson in the first (10), Mitchell in the second (11), Darrington in the third (14).

CHIPPEWAS ON THE RISE

Central Michigan was picked to finish fifth in the Mid-American Conference regular season standings by the league's coaches in a preseason poll, a would-be two-spot improvement over last season's output.

The Chippewas returned to the MAC postseason for the first time since 2021 last season with a 9-9 league record, good for the seventh seed, 14-17 overall. Head Coach **Kristin Haynie** posted an eight-game overall (five-game league) improvement between her first and second seasons at the helm of the CMU program.

Madi Morson was placed on the Preseason All-MAC First Team, **Ayanna-Sarai Darrington** on the second. Morson is the reigning MAC Freshman of the Year, both of these sophomores were on the MAC All-Freshman squad.

RIGHT WHERE SHE LEFT OFF

Madi Morson opened her sophomore campaign with 31 points at Georgia Southern (Nov. 3), one of only five players in the nation to eclipse 30 on opening night of the 2025-26 season. Morson's total bested the MAC field by seven points—all 13 programs played on opening night, thanks to the MAC-Sun Belt Challenge.

Paired with her 32-point career high last season at Dayton, Morson is the first Chippewa since Molly Davis (2019-22) to eclipse 30 multiple times in the Maroon & Gold. Davis finished her CMU career with five 30-plus games. For a loftier goal, Morson could set her sights on Micaela Kelly's (2017-21) mark: "Twin" eclipsed 30 points 10 times in her career, her high of 38 set as a sophomore.

IN THE HALL: CRYSTAL BRADFORD

The seventh overall pick in the 2015 WNBA Draft, Crystal Bradford '15 was inducted into the CMU Athletics Hall of Fame in September. No MAC player has ever been picked higher in the WNBA Draft.

Bradford was a four-time All-MAC selection, MAC Player of the Year, MAC Defensive Player of the Year and the career record holder in points, rebounds and blocks upon her graduation. Her presence brought about CMU's first MAC Tournament Championship and NCAA Tournament appearance (2013) since 1984, setting the table for the program to become an NCAA postseason regular from 2018-21.

RUBBIN' SHOULDERS WITH THE ELITE

Madi Morson's 32-point game at Dayton (Dec. 15, 2024) ranks in the top-20 in program history, joining a list that features all four MAC Player of the Year honorees (Crystal Bradford, Tinara Moore, Reyna Frost and Micaela Kelly) and the program's all-time leading scorer, Presley Hudson. Morson scored at least 23 points in four straight games (at WMU, at NIU, BGSU, Ohio), the first CMU player to do so since Micaela Kelly finished the 2020-21 senior campaign with a streak of eight such games.

THE MACHINE

Ayanna-Sarai Darrington's seven double-doubles ranked fifth among NCAA I freshmen last season (*special thanks to Zane Goedderz of Chattanooga Athletic Communications for this research*). Six of her seven came in a 10-game stretch, three of which were combined with a 20-plus point performance.

2025-26 MAC STANDINGS

SCHOOL	MAC	%	OVR	%
Ball State	0-0	.000	5-0	1.000
Massachusetts	0-0	.000	5-0	1.000
Central Michigan	0-0	.000	4-1	.800
Miami	0-0	.000	4-2	.667
Ohio	0-0	.000	2-2	.500
Kent State	0-0	.000	3-3	.500
Eastern Michigan	0-0	.000	2-3	.400
Bowling Green	0-0	.000	2-4	.333
Toledo	0-0	.000	1-3	.250
Western Michigan	0-0	.000	1-3	.250
Buffalo	0-0	.000	1-4	.200
Northern Illinois	0-0	.000	1-4	.200
Akron	0-0	.000	0-5	.000

2025-26 MAC PRESEASON POLL

#	Team (1st)	Pts.	#	Team	Pts.
1.	Kent State (5)	133	8.	Akron	51
2.	Toledo (2)	118	9.	Western Michigan	48
3.	Massachusetts (3)	115	10.	Ohio	44
4.	Ball State (3)	112	11.	Buffalo	42
5.	Central Michigan	105	12.	Eastern Michigan	36
6.	Bowling Green	101	13.	Northern Illinois	23
7.	Miami (OH)	86			

GAMES AROUND THE MAC

Thursday, November 20	Result	Location
Binghamton at Akron	BING 95-94	Akron, OH
Ohio at Xavier	XAV 74-53	Cincinnati, OH
Cincinnati at Ball State	BSU 83-63	Muncie, IN
Friday, November 21	Result	Location
Northern Illinois at SIU-Edwardsville	NIU 49-30	Edwardsville, IL
Bowling Green vs. UC Irvine	UCI 75-50	Anchorage, AK
Saturday, November 22	Result	Location
Bowling Green at Alaska-Anchorage	BG 67-63	Anchorage, AK
Boston College at Massachusetts	MASS 61-52	Amherst, MA
Eastern Illinois at Central Michigan	CMU 60-54	Mount Pleasant, MI
Sunday, November 23	Result	Location
Miami (OH) at Purdue	PUR 79-68	West Lafayette, IN
Monday, November 24	Time	Location
Kent State at Duquesne	6pm	Pittsburgh, PA
Xavier at Akron	6pm	Akron, OH
Illinois-Chicago at Ball State	6:30pm	Muncie, IN
Chicago State at Northern Illinois	7pm	DeKalb, IL
Wright State at Ohio	7pm	Athens, OH
Central Michigan at Notre Dame	9pm	South Bend, IN
Tuesday, November 25	Time	Location
Massachusetts at Holy Cross	6pm	Worcester, MA
Toledo at Youngstown State	6:30pm	Youngstown, OH
Roosevelt at Western Michigan	6:30pm	Kalamazoo, MI
Wednesday, November 26	Time	Location
Robert Morris at Michigan	1pm	Ypsilanti, MI
Thursday, November 27	Time	Location
Buffalo vs. Longwood	3:30pm	San Juan, PR
Friday, November 28	Time	Location
Kent State vs. Tulsa	11am	Nassau, Bahamas
Ball State vs. Pittsburgh	1:15pm	Naples, FL
Miami (OH) vs. Washington State	5:30pm	St. Thomas, Virgin Is
Saturday, November 29	Time	Location
Miami (OH) vs. LSU/Marist	TBA	St. Thomas, Virgin Is
Buffalo vs. Hampton	10 a.m.	San Juan, PR

2024-25 MAC STANDINGS

SCHOOL	MAC	%	OVR	%
Ball State	16-2	.889	27-8	.771
Buffalo	13-5	.722	30-7	.811
Toledo	13-5	.722	24-10	.706
Kent State	12-6	.667	21-12	.636
Miami	11-7	.611	19-13	.594
Bowling Green	11-7	.611	18-13	.581
Central Michigan	9-9	.500	14-17	.452
Western Michigan	8-10	.444	12-18	.400
Northern Illinois	6-12	.333	13-17	.433
Akron	4-14	.222	10-21	.323
Ohio	4-14	.222	6-23	.207
Eastern Michigan	1-17	.056	2-27	.069



AP MEDIA POLL

#	School	Rec.	Pts.	Prev.
1	Connecticut (28)	4-0	794	1
2	South Carolina (3)	4-0	759	2
3	UCLA (1)	5-0	748	3
4	Texas	4-0	700	4
5	LSU	4-0	668	5
6	Michigan	3-0	560	14
7	Baylor	4-0	557	7
8	Oklahoma	4-1	548	6
9	Maryland	5-0	529	9
10	TCU	4-0	521	17
11	Southern California	2-1	465	8
12	Iowa State	5-0	411	16
13	Mississippi	3-0	406	13
14	North Carolina	3-1	401	11
15	Tennessee	3-1	354	12
16	North Carolina State	2-2	284	10
17	Vanderbilt	3-0	246	19
18	Oklahoma State	5-0	239	20
19	Iowa	4-0	202	21
20	Kentucky	5-0	199	23
21	Louisville	3-1	164	22
22	Michigan State	4-0	143	24
23	West Virginia	4-0	126	NR
24	Notre Dame	3-1	121	18
25	Washington	3-0	103	25

as of November 17 - 2025-26 opponents in **Bold**

WBCA COACHES POLL

#	School	Rec.	Pts.	Prev.
1	Connecticut (28)	4-0	772	1
2	South Carolina (3)	4-0	741	2
3	UCLA	5-0	702	4
4	Texas	4-0	696	3
5	LSU	5-0	643	5
6	Maryland	5-0	575	7
7	Oklahoma	4-1	560	6
8	TCU	4-0	538	12
9	Michigan	3-0	501	15
10	Baylor	4-0	470	14
11	Southern California	2-1	468	10
12	North Carolina	3-1	430	8
13	Tennessee	3-1	383	12
14	Mississippi	3-0	349	16
15	Iowa State	5-0	346	18
16	North Carolina State	2-2	342	9
17	Vanderbilt	3-0	257	19
18	Kentucky	5-0	231	20
19	Louisville	3-1	167	21
20	Iowa	4-0	160	23
21	Oklahoma State	5-0	148	22
22	West Virginia	4-0	139	NR
23	Notre Dame	3-1	126	17
24	Duke	3-2	117	11
25	Michigan State	4-0	108	24

as of November 18 - 2025-26 opponents in **Bold**

COLLEGEINSIDER.COM MID-MAJOR POLL

#	School	Rec.	Pts.	Prev.
1	South Dakota State (31)	4-0	775	1
2	James Madison	3-1	685	6
3	Green Bay	4-1	676	4
4	Fairfield	3-1	647	3
5	Ball State	4-0	635	8
6	Princeton	3-1	611	5
7	Montana State	3-0	496	12
8	Illinois State	2-1	478	13
9	Harvard	2-3	450	2
10	Troy	3-0	447	17
11	Belmont	2-2	436	15
12	Howard	4-0	399	24
13	Murray State	2-1	359	9
14	Abilene Christian	3-1	340	11
15	Columbia	2-1	339	14
16	Charleston	3-0	335	19
17	Kent State	3-2	207	18
18	Drexel	4-0	206	25
19	Arkansas State	2-1	189	21
20	Gonzaga	2-2	160	7
21	Liberty	2-2	131	16
22	Missouri State	4-0	112	NR (26)
23	South Dakota	5-0	110	NR *
24	Navy	3-0	105	NR (29)
25	FGCU	1-1	93	23

as of November 18 - 2025-26 opponents in **Bold**

MEET THE CAPTAINS

Perhaps a rarity in college basketball these days, **Taylor Anderson** is the only player on the roster that was on Head Coach **Kristin Haynie**'s inaugural roster in 2023-24, entering her fourth season in the program. A wing with the ability to hold her own defensively against all five positions, Anderson had that '23-'24 campaign cut short due to a torn ACL, but came back to play the four for the majority of last season despite her natural position as a two/three.

Demetria Prewitt and **Taylor Johnson** were two of 10 newcomers ahead of the 2024-25 campaign, both from the junior college circuit. Prewitt came to CMU fresh off a NJCAA II National Championship at Kirkwood Community College (IA). Johnson, a Minnesota-native, ventured out to Southern Idaho before returning to the Midwest. Both bigs that bring a physical presence.

CHIPPEWAS ON THE RED CARPET

Madi Morson became the program's sixth Mid-American Conference Freshman of the Year in the league's announcement of year-end awards last season, earning All-MAC Second Team status in tandem. She is the third player in program history to achieve both MAC Freshman of the Year and land on an all-conference first or second team in the same season: all-time scoring leader Presley Hudson '19 collected a second-team nod with her rookie honor in 2016; Sue Nissen '91 remains the only to be named to the league's first team on top of the top freshman laurel.

Ayanna-Sarai Darrington joined Morson on the MAC All-Freshman squad. The 2024 Kentucky Miss Basketball finalist found her stride late in the regular season as well, with five of her seven double doubles in her last eight appearances. She turned back-to-back double-doubles into 20-and-10 games in the first week of February (Ohio, at Marshall), and added a third at Toledo (March 1)

Darrington was the only freshman in NCAA I last season, the eighth player in program history, to record a 20-rebound game with 21 against Ball State (Feb. 26, 2025), tying for sixth all-time with Bradford, Frost and Jas'Mine Bracey. The performance marked her sixth double-double of seven on the season. Her season field goal percentage (56.5) landed seventh on the all-time list.

THE BEST MAC TEAM IN MICHIGAN

For the first time since 2019-20, Central Michigan finished a clean sweep of its in-state rivals—Eastern Michigan and Western Michigan—defeating the Eagles and Broncos in back-to-back games Feb. 19-22, 2025. Head Coach **Kristin Haynie** improved to 6-1 against the Michigan MACs in her first two seasons, tying the best start by any coach in program history.

THE NEWBIES

Don't worry, there will be plenty more on Morson and Darrington... Let's meet the five new faces on the court this season.

Nekhu Mitchell and **Zareia Chevre** join the program as senior transfers, from two very different programs that didn't differ in success last season. Mitchell was a rotational piece for reigning Atlantic-10 Champion George Mason, a confident and shifty 6-foot wing with scoring prowess and a knack for crashing the boards—a Kristin Haynie specialty. Chevre was a NAIA All-American for Governors State in Metro Chicago and led the program to its first-ever NAIA Tournament Quarterfinals appearance, twice posting 40-point games in the process—she brings physicality, toughness, and an underrated playmaking ability on the floor.

Rylan Buschell and **Lilah Turnbull** are energetic freshmen. Buschell, a key member of Belleville High School's state championship team last year, has a similar tool kit to her Head Coach: a gritty, two-way point guard. Turnbull was brought up in the Midwest and East Coast prep scene and brings a versatile skillset on the offensive end.

Kara Bartels rounds out the group with towering stature and well-documented rim protection, and all-American laurels herself as the back-to-back MCCA West Player of the Year at Lansing Community College. She averaged 3.4 blocks per game in 63 games, with 13 games of five-plus and a ridiculous 13-block performance.

CLEANIN' THE GLASS

The Chippewas took a big step forward on the glass last season as a top 10 team in NCAA I per-game rankings for total rebounding (43.30; 4th), rebounding margin (+10.6; 5th) and offensive rebounding (16.1; 8th) at the end of the regular season—all of which led the MAC.

Central Michigan logged seven 50-plus rebound games and 18 games with a double-digit advantage in the margins, seven of which reached a margin of 20. The Chippewas outrebounded Marshall (Feb. 8, 2025), 57-31, for a season high +26 rebound margin, the most since posting a +29 mark against Ohio (1/9/19: W, 88-70).

MORSON NAMED FOTY? A NO-BRAINER

Outside of dominating the league's freshmen in scoring last season, **Madi Morson** passed program legend Sue Nissen for most points scored as a freshman at CMU, finishing with 511 points in 2024-25 to pass the three-time All-MAC first-teamer that scored 507 points in her rookie year in 1988. Morson logged four straight games of scoring at least 23 points, starting with 26 in Kalamazoo against Western Michigan (Jan. 25-Feb. 5), a feat that only one of the previous five CMU FOTY have accomplished (Harris, 2023). Her overall scoring average will landed third amongst the other five, notably ahead of CMU's all-time leading scorer, Presley Hudson, who averaged 13.9 points per game in her rookie season.

CLOSIN' OUT

The Chippewas finished the 2024-25 regular season just outside the top 25 in NCAA I in opponent three-point percentage, their rate of 27.5 percent (26th) was lower than any MAC team's offensive three-point clip. CMU allowed just two teams in the final 10 games to shoot over 30 percent from beyond the arc including forcing six teams to shoot at or below 25 percent during that stretch, highlighted by a 2-of-18 performance by Ball State (Feb. 26).

MORSON'S PROGRESSION

Program history was made in Dayton (Dec. 15, 2024) despite the heartbreaker against the Flyers as freshman **Madi Morson** scored a career-high 32 points, just four away from tying the all-time freshman record at CMU, set in March 1988 by an all-time Chippewa great, Sue Nissen. Nissen's rookie year landed her an All-American freshman team selection. The output also tied the most points scored by a Chippewa since New Year's Day 2022, matching Molly Davis's 32 against Northern Illinois to ring in 2022.

In a six-game stretch, capped by the outburst at Dayton, that started by scoring 18 points against Portland (Nov. 30) in Nevada's Nugget Classic, **Madi Morson** averaged 18.2 points per game on a 51.3-percent shooting clip. Her performance at Dayton stood as the most points scored by a freshman in NCAA I women's basketball from Dec. 15 until Jan. 2.

BENCH BASH

CMU's bench outscored or matched its opponent in 21 of 30 games last season. The Chippewas ranked second in the MAC in bench points per game (20.4). CMU collected 17 double-digit scoring performances in appearances from the bench last season, led by **Ayanna-Sarai Darrington** with seven.

DARRINGTON'S BREAKTHROUGH (Jan. 11, 2025)

Ayanna-Sarai Darrington put together a 19-point performance against Toledo, shooting 9-for-11 from the field to make the most of her second start of last season, which led Head Coach **Kristin Haynie** to call her, "fearless," and say, "we have to figure out more ways to get her the ball."

O-BOARDS, OH MY

at Miami (OH), March 5 – **Ayanna-Sarai Darrington** reeled in nine offensive rebounds in a 16-rebound performance that helped the Chippewas clinch a spot in the Mid-American Conference tournament for the first time since 2021. CMU collected 22 of its own misses, the second output over 20 this season (vs. Oakland, Nov. 24) ... **Ball State, Feb. 26** – **Darrington** brought down 11 offensive rebounds in her first 20-rebound performance against the Cardinals. The 21-rebound effort landed tied for sixth all-time for the program ... **Concordia, Dec. 4** – **Darrington** tallied 14 rebounds in CMU's 68-57 victory over the Cardinals, 13 of which came from the offensive glass ... **Oakland, Nov. 24** – Central Michigan tracked down 27 offensive rebounds (53 total) against Oakland (Nov. 24), the most for the Chippewas in over a decade (28; at Ball State, 2/7/13). The impressive showing against the Grizzlies marked the 12th 20-plus tally in the category in the last decade. Seven different players logged multiple offensive rebounds, led by five from **Demetria Prewitt**.



MILESTONES OF THE REVIVAL

Central Michigan's 64-60 victory over Eastern Michigan (Jan. 13, 2024) snapped a 34-game road winless streak as the first road win since Nov. 28, 2021. It also erased a 20-game road skid in MAC play, the previous road MAC win coming March 3, 2021 (at Ball State; W, 87-81 2OT) to close the 2020-21 road slate.

The Chippewas' 64-59 win over Miami (OH) (Jan. 31, 2024) marked just the second time since the program's 2021 MAC Tournament Championship that CMU collected consecutive wins in league play—the other being back-to-back home games against Buffalo (W, 72-71) and Miami (W, 83-80) in mid-February of 2023.

Central Michigan logged a winning record in December 2024, winning three of five games, finishing the month with a 54-50 victory over Milwaukee (Dec. 22, 2024). The Chippewas had not marked a winning record in a calendar month since March 2021, when they won the MAC tournament championship—January 2021 was the last winning month comprised of exclusively regular-season contests.

CMU's 75-55 victory over Akron (Jan. 15, 2025) marked the program's first 20-point win in MAC play since Jan. 23, 2021. The Chippewas had only won 17 regular-season MAC games total between those two outings, seven of which came to finish the 2021 slate. CMU showed great cohesion as a program under acting-head coach **Chelsie Butler**, achieving the feat on behalf of Head Coach **Kristin Haynie**, who missed the trip due to minor medical concerns.

Central Michigan took down arch-rival Western Michigan (Jan. 25, 2025) for the second time under Coach Haynie, 81-70, the first CMU win in Kalamazoo since Feb. 6, 2021. A 25-point performance from **Madi Morson** led the Chippewas, the first of back-to-back 25-plus games from the then-freshman—the first to do so since Micaela Kelly in the 2021 MAC Tournament.

CMU thumped Ohio (Feb. 5, 2025), 75-48, powered by two 20-point games from then-freshmen **Madi Morson** and **Ayanna-Sarai Darrington** and a Jess Lawson triple-double (the seventh in program history). The Chippewas marked the program's largest lead in a game (38) since Feb. 20, 2019 (vs. BGSU; 92-54). It was Morson's fourth consecutive 20-pointer which featured a season-high six made threes, was Darrington's first 20-pointer and third double-double (12 rebounds).

The Chippewas finished season sweeps of both in-state MAC rivals in the same week (Feb. 19-22, 2025), defeating Eastern Michigan, 74-62, and Western Michigan, 56-43—the first 4-0 record against the Michigan MACs since 2019-20. Her 6-1 record against the in-staters over her first two seasons is tied for the best start for any coach in program history.

A come-from-behind, overtime victory at Miami (OH) (March 5, 2025) marked the first time since 2021 that CMU Women's Basketball would return to the Mid-American Conference tournament. Senior Lisa Tesson led the Chippewas back from a nine-point fourth-quarter deficit, scoring all of her 13 points—tying her career-high—in the second half, five of which came in the extra frame. The win marked the first MAC tournament berth for any player or coach on the roster at the time in their current role—Haynie, of course, spent time under Sue Guevara as an assistant.

Central Michigan toppled Detroit Mercy, 87-54, on November 19 to collect both the largest total (87; most in regulation since 1/23/21) and widest margin of victory (33; tied for widest since 2/20/19) in the **Kristin Haynie** era. A strong three-point shooting performance led the way as the Chippewas opened the contest 8-for-10 from deep and a 23-4 run. **Madi Morson** (21), **Nekhu Mitchell** (17) and **Ayanna-Sarai Darrington** (16) all finished in double-digits scoring. Each posted a double-digit total in the single quarter: Morson in the first (10), Mitchell in the second (11), Darrington in the third (14).

NOTABLE GAMES FROM 2024-25

THE CHAMPS ON THE ROPES (Ball State, Feb. 26)

The Chippewas gave MAC leader Ball State all it could handle, falling in overtime, 60-58. CMU's defensive effort held the Cardinals to just 49 points in regulation, the fewest of any conference game, second to the Cardinals' matchup at Ohio State (48) in December. The Chippewas also showed why they ranked in the top-10 across the board in NCAA I in rebounding last season, an effort championed by **Ayanna-Sarai Darrington** with 21 rebounds—11 on the offensive end. **Madi Morson** accounted for five of her game-high 26 points in an 11-2 run to recover from an 8-0 Cardinal stretch. Morson found herself one-on-one with a Cardinal big on the left wing, took two dribbles to size her up and pulled up for her signature mid-range jumper to tie the game, 58-58, with one minute to go.

IT JUST MEANS MORE (Western Michigan, Jan. 25 & Feb. 19)

The Chippewas completed their first season sweep of the Broncos since 2020-21, 56-43, the third time CMU has won scoring fewer than 60 points this season. **Madi Morson** marked her seventh 20-point game with 26 points, tying the most she's scored in a MAC game this season (Jan. 29 at NIU). Morson also scored 25 points in the first matchup.

Ayanna-Sarai Darrington tallied 11 points, nine rebounds, 4-for-8 from the field with six offensive rebounds to extend her league lead. Darrington powered the finish in Kalamazoo with 15 points, eight rebounds in the second half en route to her first double-double in MAC play (18p, 10r).

A THUNDEROUS RALLY (at Marshall, Feb. 8)

The Chippewas thundered past Marshall with a 16-2 run in the final 4:39 for a 73-68 victory in the second edition of the MAC-SBC Challenge. The run was powered by the game's leading trio: Jess Lawson, **Ayanna-Sarai Darrington** and **Madi Morson**. Lawson and Darrington each posted a season-high 22 points and a double-double; Morson put up 18 points, leading the Chippewas with eight in the fourth quarter.

Morson confidently converted a four-point play with just over two minutes to go, regaining the lead for Central Michigan, who was trailing by nine points just two minutes prior. Darrington stole the show early, scoring seven of CMU's first nine points, had 11 with 90 seconds left in the first quarter. The Chippewas found assists on five of their first six buckets.

OFFENSE AWAKENS (Eastern Michigan, Jan. 18 & Feb. 19)

Central Michigan scored the most points in a single quarter (30; 2nd) and in a half (50; 1st) in the **Kristin Haynie** era in the 73-64 victory over the Eagles in January. Four players finished in double-digits for the first time since Nov. 14 (at Michigan)—freshmen **Madi Morson** (16), **Jayda Mosley** (14), **Ayanna-Sarai Darrington** (12) and senior Jess Lawson (12). CMU had season bests in FG percentage (61.3 percent) and three-point percentage (58.3 percent) in the first-half explosion as both Darrington and Mosley were in double figures before intermission. Lawson had eight points, eight assists and five rebounds at the break.

February's matchup saw **Ayanna-Sarai Darrington** tally her third 20-point game in her last four and a team-high eight rebounds to lead the Chippewas past the Eagles, 74-62. Darrington and **Madi Morson** combined for 16 points in the first quarter as CMU posted a 10-0 run to open, and an 11-0 run to close the opening period. After CMU marked a 15-point lead midway through the second quarter, the Eagles managed to come back to within 10 in the third. The Chippewas responded with a 12-2 run to reach a 50-30 lead.

TURNING THE CORNER (at Akron, Jan. 15)

Central Michigan thumped the Zips, 75-55, for its second Mid-American Conference win of the season. The Chippewas played under acting Head Coach **Chelsie Butler** as the program's leader, **Kristin Haynie**, missed the trip due to a minor medical concern. The Chippewas were led by senior guard Jess Lawson with an 18-point, 11-rebound double-double and the dynamic freshman duo of **Madi Morson** and **Ayanna-Sarai Darrington**, who each added 16 points. A Morson bucket in the final minute of the first quarter marked the final lead change of night and set the table for what became a 10-0 run; the rest of the run was supplied by three straight baskets in the paint from Darrington to open the second quarter. The Zips pulled back within a possession, 23-20, with 6:33 to go in the second; CMU responded by shutting Akron out for all but the final two seconds of the frame, scoring 17 points in the process, leading to the 40-22 margin at the break.

ABOUT THE STAFF

THE HAYNIE ERA

Head Coach **Kristin Haynie** began her head coaching career leading the Chippewas. The former Michigan State standout was named to the post in April 2023.

STAFF ROUND-UP

Chelsie Butler, CMU's Associate Head Coach and recruiting coordinator, came to Mount Pleasant from Youngstown State, who shared a Horizon League title in '22-'23. Butler played at Marquette 2011-15, graduating with a bachelor's in broadcasting.

Jenna Allen made her collegiate coaching debut at CMU in 2023-24 after playing four years professionally in Spain. Allen graduated from Michigan State with a bachelor's in kinesiology in 2019 as a four-year contributor to the Spartan program.

Jordan Walker joined the bench ahead of 2025-26 after one-year appearances at Jacksonville and Mercer, aiding in season-over-season improvements in both places. The 2019 Michigan Miss Basketball played in multiple NCAA tournament games with Tennessee after spending her first two collegiate seasons at arch-rival Western Michigan.

Rana El-Husseini came to Mount Pleasant in 2025-26 after her first season on the bench at NCAA II University of Charleston. After an all-American career at NCAA II Edinboro, the Dearborn, Mich.-native took her graduate transfer to MAC rival Buffalo where she logged the Bulls' third-ever triple-double and an All-MAC Tournament selection.

THE GAMES THAT MATTER MOST

Head Coach **Kristin Haynie** defeated both in-state rivals in her first attempt at both programs in 2023-24, a feat that CMU greets Marcy Weston, Laura Golden and Sue Guevara were unable to capture. She doubled down on this by sweeping both Eastern and Western Michigan in 2024-25 for the first time since 2019-20, securing the Women's Basketball Michigan MAC trophy.

BUTLER'S FIRST CRACK AS A HEAD COACH (Jan. 15)

The Jan. 15, 2025 visit to Akron brought adversity for the Chippewas as Head Coach **Kristin Haynie** had to stay in Mount Pleasant to give attention to minor health concerns. In Haynie's absence, then-Assistant Coach **Chelsie Butler** stepped up as the acting head coach, orchestrating the 75-55 victory over the Zips.

The contest was Butler's first as an acting head coach after nine years in full-time collegiate coaching. Butler's personal milestone came in the same facility that hosted the first years of her coaching career, as she was a graduate assistant on the Akron staff from 2015-17. She reprised her role for the 14th annual Hoops for Hunger contest against Kent State (Jan. 22).

WINNING AT ALL LEVELS

Kristin Haynie led Michigan State to the 2005 NCAA Championship contest, as the first woman to record a triple-double in the NCAA tournament. Haynie graduated eighth all-time at MSU in scoring (1,199 pts.) and was just the fourth player in Big Ten history to reach 1,000 points, 500 assists, 500 rebounds and 300 steals. Haynie and the rest of the 04-05 Spartans were invited to the Breslin Center on January 12, 2025 to celebrate the 20th anniversary of the national runner-up squad.

Drafted into the WNBA by the Sacramento Monarchs in 2005, Haynie helped the franchise collect a WNBA title in her rookie season. She played in 160 games in the WNBA from 2005-09 between the Monarchs, Atlanta Dream and Detroit Shock and added international play in Italy, Lithuania, Russia and Greece during that time.

NEXT-LEVEL PERSPECTIVE

Assistant Coach **Jenna Allen** has a professional playing background to go along with Head Coach **Kristin Haynie**. Allen played four years for Baxi Ferrol in Spain, earning Import Player of the Year honors and a regular season title.

HAYNIE BACK IN MOUNT PLEASANT

Kristin Haynie was a member of CMU Hall of Famer Sue Guevara's staff from 2014-17. The Chippewas went 58-38 (36-18 MAC) in that time with two MAC West titles (2016, 2017), a MAC regular-season title (2017) and a trip to the MAC tournament final (2017).



2025-26 STATS - COMBINED

Game Records

Record	Overall	Home	Away	Neutral
ALL GAMES	4-1	2-0	2-1	0-0
CONFERENCE	0-0	0-0	0-0	0-0
NON-CONFERENCE	4-1	2-0	2-1	0-0

Score by Periods

Team	1st	2nd	3rd	4th	OT	TOT
Central Mich.	87	83	89	99	0	358
Opponents	74	69	92	74	0	309

Team Box Score

No.	Player				Total		3-Point		F-Throw		Rebounds											
		GP-GS	MIN	AVG	FG-FGA	FG%	3FG-3FGA	3FG%	FT-FTA	FT%	OFF	DEF	TOT	AVG	PF	DQ	A	TO	BLK	STL	PTS	AVG
0	MORSON, Madi	5-5	146:35	29.3	32-82	.390	9-24	.375	20-24	.833	7	17	24	4.8	11	0	12	13	1	4	93	18.6
25	DARRINGTON, Ayanna-Sarai	4-4	83:40	20.9	20-37	.541	0-0	.000	10-19	.526	16	13	29	7.3	9	0	4	7	1	5	50	12.5
11	MITCHELL, Nekhu	5-5	154:39	30.9	17-45	.378	4-15	.267	10-14	.714	11	16	27	5.4	9	0	15	21	0	7	48	9.6
23	PREWITT, Demetria	5-2	99:21	19.9	21-29	.724	0-0	.000	6-8	.750	7	14	21	4.2	8	0	2	5	3	4	48	9.6
21	CHEVRE, Zareia	4-3	100:33	25.1	11-23	.478	0-0	.000	4-6	.667	8	12	20	5.0	7	0	8	5	1	5	26	6.5
12	SMITH, Riley	4-1	53:43	13.4	8-15	.533	6-12	.500	0-0	.000	1	5	6	1.5	7	0	4	3	0	0	22	5.5
24	ANDERSON, Taylor	5-0	101:55	20.4	7-22	.318	1-7	.143	11-12	.917	5	22	27	5.4	13	0	8	8	2	6	26	5.2
30	MOSLEY, Jayda	5-0	58:47	11.8	8-18	.444	8-18	.444	0-0	.000	1	12	13	2.6	6	0	3	3	0	0	24	4.8
10	BUSCHELL, Rylan	5-5	133:26	26.7	6-21	.286	0-4	.000	3-9	.333	3	8	11	2.2	12	0	10	11	0	5	15	3.0
40	JOHNSON, Taylor	5-0	45:15	9.0	2-8	.250	0-0	.000	0-0	.000	5	7	12	2.4	6	0	3	4	0	0	4	0.8
2	TURNBULL, Lilah	4-0	22:07	5.5	1-6	.167	0-2	.000	0-0	.000	0	3	3	0.8	1	0	2	3	0	1	2	0.5
Team											10	12	22				3					
Total		5	1000		133-306	.435	28-82	.341	64-92	.696	74	141	215	43.0	89	0	71	86	8	37	358	71.6
Opponents		5	1000		110-275	.400	32-104	.308	57-90	.633	42	106	148	29.6	104	4	58	79	19	39	309	61.8

Team Statistics

	CMU	OPP
Scoring	358	309
Points per game	71.6	61.8
Scoring margin	+9.8	-
Field goals-att	133-306	110-275
Field goal pct	.435	.400
3 point fg-att	28-82	32-104
3-point FG pct	.341	.308
3-pt FG made per game	5.6	6.4
Free throws-att	64-92	57-90
Free throw pct	.696	.633
F-Throws made per game	12.8	11.4
Rebounds	215	148
Rebounds per game	43.0	29.6
Rebounding margin	+13.4	-
Assists	71	58
Assists per game	14.2	11.6
Turnovers	86	79
Turnovers per game	17.2	15.8
Turnover margin	-1.4	-
Assist/turnover ratio	0.8	0.7
Steals	37	39
Steals per game	7.4	7.8
Blocks	8	19
Blocks per game	1.6	3.8
Winning streak	4	-
Home win streak	2	-
Attendance	2141	2096
Home games-Avg/Game	2-1071	3-699
Neutral site-Avg/Game	-	0-0

Team Results

Date	Opponent		Score	Att.
11/03/2025	at Ga. Southern	L	72-98	852
11/09/2025	Davenport	W	71-44	1040
11/12/2025	at Butler	W	68-59	783
11/19/2025	at Detroit Mercy	W	87-54	461
11/22/2025	Eastern Ill.	W	60-54	1101



2025-26 STATS - SCHEDULE/RESULTS AND LEADERS

Game Records

Record	Overall	Home	Away	Neutral
ALL GAMES	4-1	2-0	2-1	0-0
CONFERENCE	0-0	0-0	0-0	0-0
NON-CONFERENCE	4-1	2-0	2-1	0-0

Team Results

Date	Opponent		Score	Att.	High Points	High Rebounds
11/03/2025	at Ga. Southern	L	72-98	852	(31) MORSON, Madi	(8) ANDERSON, Taylor
11/09/2025	Davenport	W	71-44	1040	(15) DARRINGTON, Ayanna-Sarai	(11) DARRINGTON, Ayanna-Sarai
11/12/2025	at Butler	W	68-59	783	(14) MORSON, Madi	(7) MITCHELL, Nekhu

2025-26 STATS - TEAM GAME-BY-GAME

				Total		3-Pointers		Free throws		Rebounds											
Opponent	Date	Score		FG-FGA	PCT	3FG-3FGA	PCT	FT-FTA	PCT	OFF	DEF	TOT	AVG	PF	A	TO	BLK	STL	PTS	AVG	
at Ga. Southern	11/03/2025	72-98	L	28-56	.500	1-7	.143	15-20	.750	10	21	31	31.0	19	7	16	3	3	72	72.0	
Davenport	11/09/2025	71-44	W	25-69	.362	6-16	.375	15-29	.517	23	31	54	42.5	20	18	13	1	9	71	71.5	
at Butler	11/12/2025	68-59	W	26-59	.441	4-13	.308	12-15	.800	14	20	34	39.7	16	11	17	1	14	68	70.3	
at Detroit Mercy	11/19/2025	87-54	W	33-61	.541	13-25	.520	8-10	.800	13	37	50	42.3	18	22	21	2	4	87	74.5	
Eastern Ill.	11/22/2025	60-54	W	21-61	.344	4-21	.190	14-18	.778	14	32	46	43.0	16	13	19	1	7	60	71.6	



2025-26 STATS - INDIVIDUAL OVERALL-CONFERENCE

Summary

Player	Overall Statistics										Conference Statistics									
	GP-GS	MIN/G	FG%	3FG%	FT%	R/G	A/G	STL	BLK	PTS/G	GP-GS	MIN/G	FG%	3FG%	FT%	R/G	A/G	STL	BLK	PTS/G
MORSON, Madi	5-5	29.3	.390	.375	.833	4.8	2.4	4	1	18.6	0-0	0.0	.000	.000	.000	0.0	0.0	0	0	0.0
DARRINGTON, Ayanna-Sarai	4-4	20.9	.541	.000	.526	7.3	1.0	5	1	12.5	0-0	0.0	.000	.000	.000	0.0	0.0	0	0	0.0
MITCHELL, Nekhu	5-5	30.9	.378	.267	.714	5.4	3.0	7	0	9.6	0-0	0.0	.000	.000	.000	0.0	0.0	0	0	0.0
PREWITT, Demetria	5-2	19.9	.724	.000	.750	4.2	0.4	4	3	9.6	0-0	0.0	.000	.000	.000	0.0	0.0	0	0	0.0
CHEVRE, Zareia	4-3	25.1	.478	.000	.667	5.0	2.0	5	1	6.5	0-0	0.0	.000	.000	.000	0.0	0.0	0	0	0.0
SMITH, Riley	4-1	13.4	.533	.500	.000	1.5	1.0	0	0	5.5	0-0	0.0	.000	.000	.000	0.0	0.0	0	0	0.0
ANDERSON, Taylor	5-0	20.4	.318	.143	.917	5.4	1.6	6	2	5.2	0-0	0.0	.000	.000	.000	0.0	0.0	0	0	0.0
MOSLEY, Jayda	5-0	11.8	.444	.444	.000	2.6	0.6	0	0	4.8	0-0	0.0	.000	.000	.000	0.0	0.0	0	0	0.0
BUSCHELL, Rylan	5-5	26.7	.286	.000	.333	2.2	2.0	5	0	3.0	0-0	0.0	.000	.000	.000	0.0	0.0	0	0	0.0
JOHNSON, Taylor	5-0	9.0	.250	.000	.000	2.4	0.6	0	0	0.8	0-0	0.0	.000	.000	.000	0.0	0.0	0	0	0.0
TURNBULL, Lilah	4-0	5.5	.167	.000	.000	0.8	0.5	1	0	0.5	0-0	0.0	.000	.000	.000	0.0	0.0	0	0	0.0
Totals	5		.435	.341	.696	43.0	14.2	37	8	71.6	0		.000	.000	.000	0.0	0.0	0	0	0.0
Opponent	5		.400	.308	.633	29.6	11.6	39	19	61.8	0		.000	.000	.000	0.0	0.0	0	0	0.0

Scoring

Player	Overall Statistics								Conference Statistics							
	FG-FGA	FG%	3FG-3FGA	3FG%	FT-FTA	FT%	PTS	PTS/G	FG-FGA	FG%	3FG-3FGA	3FG%	FT-FTA	FT%	PTS	PTS/G
MORSON, Madi	32-82	.390	9-24	.375	20-24	.833	93	18.6	0-0	.000	0-0	.000	0-0	.000	0	0.0
DARRINGTON, Ayanna-Sarai	20-37	.541	0-0	.000	10-19	.526	50	12.5	0-0	.000	0-0	.000	0-0	.000	0	0.0
MITCHELL, Nekhu	17-45	.378	4-15	.267	10-14	.714	48	9.6	0-0	.000	0-0	.000	0-0	.000	0	0.0
PREWITT, Demetria	21-29	.724	0-0	.000	6-8	.750	48	9.6	0-0	.000	0-0	.000	0-0	.000	0	0.0
CHEVRE, Zareia	11-23	.478	0-0	.000	4-6	.667	26	6.5	0-0	.000	0-0	.000	0-0	.000	0	0.0
SMITH, Riley	8-15	.533	6-12	.500	0-0	.000	22	5.5	0-0	.000	0-0	.000	0-0	.000	0	0.0
ANDERSON, Taylor	7-22	.318	1-7	.143	11-12	.917	26	5.2	0-0	.000	0-0	.000	0-0	.000	0	0.0
MOSLEY, Jayda	8-18	.444	8-18	.444	0-0	.000	24	4.8	0-0	.000	0-0	.000	0-0	.000	0	0.0
BUSCHELL, Rylan	6-21	.286	0-4	.000	3-9	.333	15	3.0	0-0	.000	0-0	.000	0-0	.000	0	0.0
JOHNSON, Taylor	2-8	.250	0-0	.000	0-0	.000	4	0.8	0-0	.000	0-0	.000	0-0	.000	0	0.0
TURNBULL, Lilah	1-6	.167	0-2	.000	0-0	.000	2	0.5	0-0	.000	0-0	.000	0-0	.000	0	0.0
Totals	133-306	.435	28-82	.341	64-92	.696	358	71.6	0-0	.000	0-0	.000	0-0	.000	0	0.0
Opponent	110-275	.400	32-104	.308	57-90	.633	309	61.8	0-0	.000	0-0	.000	0-0	.000	0	0.0

Totals

Player	Overall Statistics										Conference Statistics									
	O-REB	D-REB	TOTAL	PF	FO	A	TO	A/TO	HI	PTS	O-REB	D-REB	TOTAL	PF	FO	A	TO	A/TO	HI	PTS
MORSON, Madi	7	17	24	11	0	12	13	0.9	31		0	0	0	0	0	0	0	0.0	0	
DARRINGTON, Ayanna-Sarai	16	13	29	9	0	4	7	0.6	16		0	0	0	0	0	0	0	0.0	0	
MITCHELL, Nekhu	11	16	27	9	0	15	21	0.7	17		0	0	0	0	0	0	0	0.0	0	
PREWITT, Demetria	7	14	21	8	0	2	5	0.4	17		0	0	0	0	0	0	0	0.0	0	
CHEVRE, Zareia	8	12	20	7	0	8	5	1.6	10		0	0	0	0	0	0	0	0.0	0	
SMITH, Riley	1	5	6	7	0	4	3	1.3	13		0	0	0	0	0	0	0	0.0	0	
ANDERSON, Taylor	5	22	27	13	0	8	8	1.0	8		0	0	0	0	0	0	0	0.0	0	
MOSLEY, Jayda	1	12	13	6	0	3	3	1.0	9		0	0	0	0	0	0	0	0.0	0	
BUSCHELL, Rylan	3	8	11	12	0	10	11	0.9	8		0	0	0	0	0	0	0	0.0	0	
JOHNSON, Taylor	5	7	12	6	0	3	4	0.8	4		0	0	0	0	0	0	0	0.0	0	
TURNBULL, Lilah	0	3	3	1	0	2	3	0.7	2		0	0	0	0	0	0	0	0.0	0	
Totals	74	141	215	89	0	71	86	0.8	87		0	0	0	0	0	0	0	0.0	0	
Opponent	42	106	148	104	4	58	79	0.7	98		0	0	0	0	0	0	0	0.0	0	



MADI MORSON

PRONUNCIATION: MAD-ee MORE-sun

POSITION: Guard
HEIGHT: 5-8
YEAR: Sophomore
HOMETOWN: Canton, Michigan
HIGH SCHOOL: Salem High School

SEASON STATS

Opponent	Date	GS	MIN	Total		3-Pointers		Free throws		Rebounds				PF	A	TO	BLK	STL	PTS	AVG
				FG-FGA	PCT	3FG-3FGA	PCT	FT-FTA	PCT	OFF	DEF	TOT	AVG							
at Ga. Southern	11/03/2025	*	29:56	13-21	.619	1-4	.250	4-4	1.000	0	3	3	3.0	0	1	2	1	0	31	31.0
Davenport	11/09/2025	*	26:14	3-15	.200	0-1	.000	4-6	.667	2	3	5	4.0	3	3	1	0	1	10	20.5
at Butler	11/12/2025	*	30:54	6-19	.316	2-6	.333	0-0	.000	1	3	4	4.0	3	2	4	0	3	14	18.3
at Detroit Mercy	11/19/2025	*	26:52	6-14	.429	4-7	.571	5-5	1.000	2	4	6	4.5	2	4	2	0	0	21	19.0
Eastern Ill.	11/22/2025	*	32:39	4-13	.308	2-6	.333	7-9	.778	2	4	6	4.8	3	2	4	0	0	17	18.6
Totals			5 146:35	32-82	.390	9-24	.375	20-24	.833	7	17	24	4.8	11	12	13	1	4	93	18.6

Player Averages

Games Played	Minutes/ game	Points/ game	FG Pct	3FG Pct	FT Pct	Rebounds/ game	Assists/ game	Turnovers/ game	Assist/Turnover ratio	Steals/ game	Blocks/ game
5	29.3	18.6	39.0	37.5	83.3	4.8	2.4	2.6	0.9	0.8	0.2

CAREER STATS

				Field Goals		3-Point		F-Throws		Rebounds									Scoring	
SEASON	TEAM	GP-GS	MIN/AVG	FG-FGA	FG%	3FG-3FGA	3FG%	FT-FTA	FT%	OFF	DEF	TOT	AVG	PF-FO	A	TO	BLK	STL	PTS	AVG
2024-25	CMU	31-27	821/26.9	196-457	.429	35-94	.372	84-103	.816	28	70	98	3.2	56-0	37	61	9	25	511	16.5
2025-26	CMU	5-5	147/29.3	32-82	.390	9-24	.375	20-24	.833	7	17	24	4.8	11-0	12	13	1	4	93	18.6
TOTAL		36-32	967/26.9	228-539	.423	44-118	.373	104-127	.819	35	87	122	3.4	67-0	49	74	10	29	604	16.8

Single Game Highs

Statistic	Value
Points	32 at Dayton 12/15/24
Rebounds	6 5 times
Assists	4 at Michigan 11/14/24, vs Akron 03/08/25, at Detroit Mercy 11/19/25
Steals	3 vs Toledo 01/11/25, vs Concordia (MI) 12/04/24, at Butler 11/12/25
Blocks	1 10 times
FG Made	13 at Dayton 12/15/24, at Ga. Southern 11/03/25
FG Attempts	29 vs Ball St. 02/26/25
3FG Made	6 vs Ohio 02/05/25
3FG Attempts	8 vs Ohio 02/05/25
FT Made	7 vs Eastern Ill. 11/22/25
FT Attempts	9 vs Eastern Ill. 11/22/25

BIOGRAPHY

Key Notes:
MAC Freshman of the Year (2025)
All-MAC (2025; 2nd Team)
CMU Freshman Points Record Holder (511)
CMU Freshman Single-Game Points Runner-Up (32; 12/15/24)

2024-25: Named MAC Freshman of the Year, All-MAC Second Team ... scored freshman program record 511 points, led Chippewas with 16.5 points per game across 31 appearances, 27 starts ... scored season-high 32 points (second-most by a CMU freshman all-time) at Dayton (12/15/24), scored 20-plus points 10 times ... was CMU's leading scorer in 19 of 31 games ... shot 50 percent or better from the field in eight of final 13 games ... ranked third in the MAC in points and made field goals, fifth in points per game ... was held to single-digit scoring only twice since taking permanent starting lineup spot (12/15/24, 22 games) ... marked first collegiate start in season-opener against Coastal Carolina (11/4/24)

High School: Graduated from 2023 district and regional champion Salem High School ... Michigan Miss Basketball Finalist (2024) ... two-time all-state and all-state dream team selection (2024, 2023) ... named to Basketball Coaches Association of Michigan's Best (2023) ... three-time All-Kensington Lakes Activities Association (KLAA) selection ... named all-region (2023) ... also earned three varsity letters in track & field ... two-time state runner-up in the high jump ... member of the American Sign Language club

Club: Played 17U (2023) for Rickea Jackson Elite Anarchy of Livonia, Mich. ... played 16U (2022) for Michigan Lady Playmakers of Detroit.

"Why CMU?": "Out of all of the schools that offered me, Coach Haynie's description of the play style we're going to have is the way I love to play basketball. Central also has the best engineering program out of all of my offers."

Personal: Daughter of Stephanie and Theodis Morson ... youngest of five siblings, sisters Alex and Chanel and brothers Reyhan and Razi ... intends to major in mechanical engineering with a minor in American Sign Language ... has three cousins currently competing in college athletics: Jordin King, Howard Softball; Amaya Battle, Minnesota Women's Basketball; Jamison Battle, Minnesota Men's Basketball ... cousin James King played for UC-Riverside Men's Basketball (1994-97) ... loves to solve rubik's cubes, logic puzzles and sudoku.

MAC/NCAA RATINGS

Single-game points: 31
22nd in NCAA I, 1st in MAC
- Nov. 3 at Georgia Southern

Points Per Game: 18.6
49th in NCAA I, 1st in MAC



LILAH TURNBULL

PRONUNCIATION: LIE-luh TURN-bull

POSITION: Guard

HEIGHT: 5-7

YEAR: Freshman

HOMETOWN: Pittsburgh, Pennsylvania

HIGH SCHOOL: Western Reserve Academy (OH)

BIOGRAPHY

High School: Graduated from Western Reserve Academy in Hudson, Ohio ... led the Pioneers to the National Prep Championship final, defeating IMG Academy (FL) and Newman School (MA) prior to the title game ... battle-tested through the No. 3 strength of schedule in the state of Ohio (via MaxPreps) ... played three seasons at Chartiers Valley High School in Bridgeville, Pa. ... won 2022 sectional in basketball ... recorded two 20-point games in 13 double-digit performances, named second-team all-section (2022)

Club: Played for SMAC, Nike Team Takeover and United Family

Personal: Daughter of Mandy and Graham Turnbull ... middle child of five children: sisters, Marian (older) and Rainiah (younger); brothers, Theron (older), and Reed (younger) ... sister, Marian, played basketball at NCAA I Northeastern (2022-25) ... brother, Theron, played lacrosse at NCAA Savannah College of Art & Design (SCAD) (2022-25) ... plans to major in business administration, minor in economics ... can play guitar

SEASON STATS

Opponent	Date	GS	MIN	Total		3-Pointers		Free throws		Rebounds				PF	A	TO	BLK	STL	PTS	AVG
				FG-FGA	PCT	3FG-3FGA	PCT	FT-FTA	PCT	OFF	DEF	TOT	AVG							
at Ga. Southern	11/03/2025		02:21	0-3	.000	0-1	.000	0-0	.000	0	0	0	0.0	0	0	0	0	0	0	0.0
Davenport	11/09/2025		03:53	0-0	.000	0-0	.000	0-0	.000	0	0	0	0.0	0	0	2	0	0	0	0.0
at Detroit Mercy	11/19/2025		15:16	1-3	.333	0-1	.000	0-0	.000	0	3	3	1.0	1	2	1	0	1	2	0.7
Eastern Ill.	11/22/2025		00:37	0-0	.000	0-0	.000	0-0	.000	0	0	0	0.8	0	0	0	0	0	0	0.5
Totals		0	22:07	1-6	.167	0-2	.000	0-0	.000	0	3	3	0.8	1	2	3	0	1	2	0.5

Player Averages

Games Played	Minutes/ game	Points/ game	FG Pct	3FG Pct	FT Pct	Rebounds/ game	Assists/ game	Turnovers/ game	Assist/Turnover ratio	Steals/ game	Blocks/ game
4	5.5	0.5	16.7	0.0	0.0	0.8	0.5	0.8	0.7	0.3	0.0

CAREER STATS

SEASON	TEAM	GP-GS	MIN/AVG	Field Goals		3-Point		F-Throws		Rebounds				Scoring						
				FG-FGA	FG%	3FG-3FGA	3FG%	FT-FTA	FT%	OFF	DEF	TOT	AVG	PF-FO	A	TO	BLK	STL	PTS	AVG
2025-26	CMU	4-0	22/5.5	1-6	.167	0-2	.000	0-0	.000	0	3	3	0.8	1-0	2	3	0	1	2	0.5
TOTAL		4-0	22/5.5	1-6	.167	0-2	.000	0-0	.000	0	3	3	0.8	1-0	2	3	0	1	2	0.5

Single Game Highs

Statistic	Value
Points	2 at Detroit Mercy 11/19/25
Rebounds	3 at Detroit Mercy 11/19/25
Assists	2 at Detroit Mercy 11/19/25
Steals	1 at Detroit Mercy 11/19/25
FG Made	1 at Detroit Mercy 11/19/25
FG Attempts	3 at Ga. Southern 11/03/25, at Detroit Mercy 11/19/25
3FG Attempts	1 at Ga. Southern 11/03/25, at Detroit Mercy 11/19/25

MAC/NCAA RATINGS



RYLAN BUSCHELL

10



PRONUNCIATION: RYE-lin BUSH-ull

POSITION: Guard

HEIGHT: 5-6

YEAR: Freshman

HOMETOWN: Belleville, Michigan

HIGH SCHOOL: Belleville High School

BIOGRAPHY

High School: Graduated from 2025 MHSAA I Champion and back-to-back state finalist Belleville High School ... three-time all-state honoree (HM: 2024-25, 2021-22; Second Team: Preseason 2024-25) ... set Belleville's single-game assists record (13) as a junior ... three-time All-Kensington Lakes Activities Association (KLAA) selection ... MLive Metro Detroit Dream Team (2024)

Club: Played for Michigan Crossover EYBL of Detroit ... two-time state champion (2019, 2018) ... two-time Spartan Classic champion (2020, 2018)

Personal: Daughter of Deanna Houston and Ryan Buschell ... has one older sister, Jaya ... favorite professional athletes: Kevin Durant and Kyrie Irving ... favorite food: steak and mashed potatoes with gravy ... enjoys traveling, lists Puerto Rico as a favorite destination

"Why CMU?": "I chose to attend Central Michigan University because of the coaching staff and atmosphere from the first greeting. Each coach has made a point to have a relationship with me and I truly appreciated that through my recruiting process. All my visits gave me a sense of comfortability and direction. The strategic way the coaches are building the program, always ensuring that there is a family and everyone fits in the puzzle. I trust they will build me to be a better player and person on and off the court. Overall, the coaches along with the other players, the culture, and the style of play made my choice so much easier."

SEASON STATS

Opponent	Date	GS	MIN	Total		3-Pointers		Free throws		Rebounds				PF	A	TO	BLK	STL	PTS	AVG	
				FG-FGA	PCT	3FG-3FGA	PCT	FT-FTA	PCT	OFF	DEF	TOT	AVG								
at Ga. Southern	11/03/2025	*	34:03	1-4	.250	0-1	.000	0-2	.000	0	0	0	0.0	3	3	4	0	0	2	2.0	
Davenport	11/09/2025	*	32:51	3-9	.333	0-2	.000	2-6	.333	0	3	3	1.5	1	2	0	0	4	8	5.0	
at Butler	11/12/2025	*	18:05	0-2	.000	0-1	.000	0-0	.000	1	0	1	1.3	3	0	2	0	0	0	3.3	
at Detroit Mercy	11/19/2025	*	18:56	0-2	.000	0-0	.000	0-0	.000	1	1	2	1.5	2	2	3	0	0	0	2.5	
Eastern Ill.	11/22/2025	*	29:32	2-4	.500	0-0	.000	1-1	1.000	1	4	5	2.2	3	3	2	0	1	5	3.0	
Totals			5	133:26	6-21	.286	0-4	.000	3-9	.333	3	8	11	2.2	12	10	11	0	5	15	3.0

Player Averages

Games Played	Minutes/game	Points/game	FG Pct	3FG Pct	FT Pct	Rebounds/game	Assists/game	Turnovers/game	Assist/Turnover ratio	Steals/game	Blocks/game
5	26.7	3.0	28.6	0.0	33.3	2.2	2.0	2.2	0.9	1.0	0.0

CAREER STATS

		Field Goals				3-Point		F-Throws		Rebounds									Scoring		
SEASON	TEAM	GP-GS	MIN	AVG	FG-FGA	FG%	3FG-3FGA	3FG%	FT-FTA	FT%	OFF	DEF	TOT	AVG	PF-FO	A	TO	BLK	STL	PTS	AVG
2025-26	CMU	5-5	133	26.7	6-21	.286	0-4	.000	3-9	.333	3	8	11	2.2	12-0	10	11	0	5	15	3.0
TOTAL		5-5	133	26.7	6-21	.286	0-4	.000	3-9	.333	3	8	11	2.2	12-0	10	11	0	5	15	3.0

Single Game Highs

Statistic	Value
Points	8 vs Davenport 11/09/25
Rebounds	5 vs Eastern Ill. 11/22/25
Assists	3 at Ga. Southern 11/03/25, vs Eastern Ill. 11/22/25
Steals	4 vs Davenport 11/09/25
FG Made	3 vs Davenport 11/09/25
FG Attempts	9 vs Davenport 11/09/25
3FG Attempts	2 vs Davenport 11/09/25
FT Made	2 vs Davenport 11/09/25
FT Attempts	6 vs Davenport 11/09/25

MAC/NCAA RATINGS



NEKHU MITCHELL

PRONUNCIATION: NAY-koo

POSITION: Forward

HEIGHT: 6-0

YEAR: Senior

HOMETOWN: Baltimore, Maryland

HIGH SCHOOL: McDonogh High School

PREVIOUS SCHOOLS: George Mason

SEASON STATS

Opponent	Date	GS	MIN	Total		3-Pointers		Free throws		Rebounds				PF	A	TO	BLK	STL	PTS	AVG
				FG-FGA	PCT	3FG-3FGA	PCT	FT-FTA	PCT	OFF	DEF	TOT	AVG							
at Ga. Southern	11/03/2025	*	35:00	4-10	.400	0-1	.000	2-2	1.000	1	1	2	2.0	1	1	5	0	3	10	10.0
Davenport	11/09/2025	*	21:23	1-7	.143	0-3	.000	1-4	.250	2	4	6	4.0	4	3	3	0	2	3	6.5
at Butler	11/12/2025	*	34:00	4-8	.500	2-4	.500	2-2	1.000	4	3	7	5.0	2	2	4	0	0	12	8.3
at Detroit Mercy	11/19/2025	*	29:25	7-11	.636	2-4	.500	1-2	.500	3	2	5	5.0	1	6	4	0	2	17	10.5
Eastern Ill.	11/22/2025	*	34:50	1-9	.111	0-3	.000	4-4	1.000	1	6	7	5.4	1	3	5	0	0	6	9.6
Totals			5 154:39	17-45	.378	4-15	.267	10-14	.714	11	16	27	5.4	9	15	21	0	7	48	9.6

Player Averages

Games Played	Minutes/ game	Points/ game	FG Pct	3FG Pct	FT Pct	Rebounds/ game	Assists/ game	Turnovers/ game	Assist/Turnover ratio	Steals/ game	Blocks/ game
5	30.9	9.6	37.8	26.7	71.4	5.4	3.0	4.2	0.7	1.4	0.0

CAREER STATS

				Field Goals			3-Point		F-Throws		Rebounds				Scoring						
SEASON	TEAM	GP-GS	MIN/AVG	FG-FGA	FG%	3FG-3FGA	3FG%	FT-FTA	FT%	OFF	DEF	TOT	AVG	PP-FO	A	TO	BLK	STL	PTS	AVG	
2022-23	GMU	31-5	465/15.0	42-92	.457	2-15	.133	19-37	.514	50	61	111	3.6	51-0	24	27	6	16	105	3.4	
2023-24	GMU	31-31	642/20.7	44-143	.308	5-33	.152	32-41	.780	65	89	154	5.0	50-1	28	33	9	35	125	4.0	
2024-25	GMU	32-4	557/17.4	66-121	.545	18-39	.462	30-40	.750	34	44	78	2.4	47-0	23	27	4	37	180	5.6	
2025-26	CMU	5-5	155/30.9	17-45	.378	4-15	.267	10-14	.714	11	16	27	5.4	9-0	15	21	0	7	48	9.6	
TOTAL FOR CMU		5-5	155/30.9	17-45	.378	4-15	.267	10-14	.714	11	16	27	5.4	9-0	15	21	0	7	48	9.6	
TOTAL		99-45	1818/18.4	169-401	.421	29-102	.284	91-132	.689	160	210	370	3.7	157-1	90	108	19	95	458	4.6	

Single Game Highs

Statistic	Value
Points	20 vs Massachusetts 02/16/25
Rebounds	13 vs LSU 11/24/22
Assists	6 at Detroit Mercy 11/19/25
Steals	5 at Fordham 02/08/25
Blocks	2 at Loyola Chicago 02/15/23, vs Dayton 02/28/24, vs George Washington 01/25/25
FG Made	7 at Detroit Mercy 11/19/25
FG Attempts	13 vs Massachusetts 02/16/25
3FG Made	3 vs Massachusetts 02/16/25, vs George Washington 01/25/25
3FG Attempts	6 vs Massachusetts 02/16/25
FT Made	5 vs Massachusetts 02/16/25
FT Attempts	6 vs Marshall 11/09/23

BIOGRAPHY

2024-25 at George Mason: Transferred to Central Michigan from George Mason University of the Atlantic-10 Conference ... scored career-high 20 points against Massachusetts (Feb. 16) in three double-digit outings: vs. Johnson C. Smith (Nov. 4), vs. George Washington (Jan. 25) ... a banner season in efficiency: career highs of 54.5 field goal percentage (led team), 46.2 three-point percentage (2nd on team) to go with 75.0 free throw percentage

2023-24 at George Mason: One of just two players to start all 31 games for the Patriots ... second on the team with 5.0 rebounds per game ... collected four double-digit scoring games ... season-high 11 points, career high three steals against American (Nov. 22) ... scored 10 points, season-high two three-pointers against nationally-ranked Maryland (Dec. 3) ... season-high nine rebounds achieved twice: at Coppin State (Nov. 26), vs. Fordham (Jan. 31) ... six games with seven-plus rebounds ... career-highs of 35 steals, 28 assists, nine blocks; all third on the team ... fourth on the team with 78.0 free throw percentage.

2022-23 at George Mason: One of just five Patriots to appear in all 31 games, making five starts in the final five games of the season ... career-high 13 rebounds against No. 12 LSU (Nov. 24) ... scored season-high 12 points against top-seeded Massachusetts in the A-10 Quarterfinals (March 3)

High School: Graduated on the honor roll from McDonogh School in Owings Mills, Md. ... collected five varsity letters: four for basketball, one for track & field ... earned first team all-conference honors ... led Eagles to IAAM

Club: Played AAU ball for Fairfax Stars ... named MVP of the Rose Classic in 2020

Personal: Daughter of Toimbe and Denzel Mitchell, Jr. ... second of five children, has four brothers: Gyasi, Denzel III, Asi-yahola and Aman ... plans to major in community development ... enjoys baking/cooking, make-up, watching and rating movies, watching sunsets and hiking ... cousin, Jahmir Young, debuted in the NBA with the Chicago Bulls in 2025 ... "I grew up on various farms in and out of the city, I am terrified of snakes or any reptiles/amphibians and I am the only girl out of four boys and the most athletic."

Why CMU?: "I love the community and environment of CMU. The coaches are amazing. They made an effort to make me feel like I belong, and I am a part of something bigger than myself. CMU offers opportunities to be involved, especially in diverse ways."

MAC/NCAA RATINGS



RILEY SMITH

12



POSITION: Forward
HEIGHT: 6-2
YEAR: Sophomore
HOMETOWN: Miamisburg, Ohio
HIGH SCHOOL: Archbishop Alter High School

BIOGRAPHY

2024-25: Played in 29 of 31 games ... marked season-highs of 13 points, 26 minutes at Michigan (11/14/24) ... made first collegiate start against Oakland (11/24/24) ... season-high eight rebounds at Buffalo (1/1/25) ... averaged 11.6 minutes per appearance ... was team's leading scorer at Michigan ... led CMU with seven rebounds at Dayton (12/15/24)

High School: Graduated from 2022 state champion Archbishop Alter of Kettering, Ohio ... led the Knights to three straight district and Greater Catholic League (GLC) championships (2024, 2023, 2022) ... third-team all-state (2022) ... District 15 Player of the Year (2024) ... three-time AP All-Southwest District, first team in 2024, 2022 ... District 15 Underclassman Player of the Year (2022) ... two-time Archbishop Alter Captain's Award recipient (2024, 2023) ... member of the student administration, German Club and Key Club ... six-time honor roll qualifier.

Club: Played for Sports City U/Legends U in Columbus, Ohio throughout high school ... played for Dayton Metro from fourth through eighth grade ... also played soccer for the South Stars of Miamisburg, Ohio from kindergarten through eighth grade.

Personal: Daughter of Julie and Jeffery Smith ... has one older brother, Jack ... mother, Julie, and aunt, Lynn, both played Mid-American Conference Volleyball, at Bowling Green (1989-92) and Ohio (1988-91), respectively ... uncle, Victor, played basketball at NCAA III Heidelberg University (2010-12) ... gets Starbucks before every game, and chews gum during all workouts, practices and games ... enjoys baking/cooking, working out, walking her dog, shopping, hanging out with friends and spending time watching movies with her parents.

"Why CMU?": "I chose to attend Central Michigan because everyone was so welcoming and friendly. I felt like I was at home."

SEASON STATS

Opponent	Date	GS	MIN	Total		3-Pointers		Free throws		Rebounds				PF	A	TO	BLK	STL	PTS	AVG
				FG-FGA	PCT	3FG-3FGA	PCT	FT-FTA	PCT	OFF	DEF	TOT	AVG							
Davenport	11/09/2025		17:18	5-8	.625	3-5	.600	0-0	.000	1	1	2	2.0	3	1	2	0	0	13	13.0
at Butler	11/12/2025		06:48	0-0	.000	0-0	.000	0-0	.000	0	0	0	1.0	0	0	0	0	0	0	6.5
at Detroit Mercy	11/19/2025		18:40	3-5	.600	3-5	.600	0-0	.000	0	1	1	1.0	2	2	1	0	0	9	7.3
Eastern Ill.	11/22/2025	*	10:57	0-2	.000	0-2	.000	0-0	.000	0	3	3	1.5	2	1	0	0	0	0	5.5
Totals		1	53:43	8-15	.533	6-12	.500	0-0	.000	1	5	6	1.5	7	4	3	0	0	22	5.5

Player Averages

Games Played	Minutes/game	Points/game	FG Pct	3FG Pct	FT Pct	Rebounds/game	Assists/game	Turnovers/game	Assist/Turnover ratio	Steals/game	Blocks/game
4	13.4	5.5	53.3	50.0	0.0	1.5	1.0	0.8	1.3	0.0	0.0

CAREER STATS

		Field Goals				3-Point		F-Throws		Rebounds												Scoring	
SEASON	TEAM	GP-GS	MIN/AVG	FG-FGA	FG%	3FG-3FGA	3FG%	FT-FTA	FT%	OFF	DEF	TOT	AVG	PF-FO	A	TO	BLK	STL	PTS	AVG			
2024-25	CMU	29-1	337/11.6	28-101	.277	19-67	.284	13-23	.565	17	31	48	1.7	52-1	8	39	3	8	88	3.0			
2025-26	CMU	4-1	54/13.4	8-15	.533	6-12	.500	0-0	.000	1	5	6	1.5	7-0	4	3	0	0	22	5.5			
TOTAL		33-2	391/11.8	36-116	.310	25-79	.316	13-23	.565	18	36	54	1.6	59-1	12	42	3	8	110	3.3			

Single Game Highs

Statistic	Value
Points	13 at Michigan 11/14/24, vs Davenport 11/09/25
Rebounds	8 at Buffalo 01/01/25
Assists	2 vs Concordia (MI) 12/04/24, at Detroit Mercy 11/19/25
Steals	2 vs Ohio 02/05/25
Blocks	1 at Bowling Green 02/15/25, at Dayton 12/15/24, at Michigan 11/14/24
FG Made	5 vs Davenport 11/09/25
FG Attempts	11 at Michigan 11/14/24
3FG Made	3 at Michigan 11/14/24, vs Davenport 11/09/25, at Detroit Mercy 11/19/25
3FG Attempts	8 at Buffalo 01/01/25
FT Made	3 at Buffalo 01/01/25
FT Attempts	4 at Buffalo 01/01/25, vs Concordia (MI) 12/04/24

MAC/NCAA RATINGS

Three-Point Percentage: 50.0
3rd in MAC



ZAREIA “Z” CHEVRE

PRONUNCIATION: ZAR-ee-uh SHEV-ree

POSITION: Forward
HEIGHT: 5-10
YEAR: Fifth Year
HOMETOWN: St. Paul, Minnesota
HIGH SCHOOL: Simley High School
PREVIOUS SCHOOLS: Monmouth, Western Illinois
Governors State (IL)

SEASON STATS

Opponent	Date	GS	MIN	Total		3-Pointers		Free throws		Rebounds				PF	A	TO	BLK	STL	PTS	AVG
				FG-FGA	PCT	3FG-3FGA	PCT	FT-FTA	PCT	OFF	DEF	TOT	AVG							
at Ga. Southern	11/03/2025	*	18:40	1-1	1.000	0-0	.000	1-2	.500	1	0	1	1.0	4	0	1	0	0	3	3.0
Davenport	11/09/2025	*	22:51	2-5	.400	0-0	.000	2-2	1.000	4	3	7	4.0	0	3	1	0	0	6	4.5
at Butler	11/12/2025	*	29:09	5-9	.556	0-0	.000	0-0	.000	1	4	5	4.3	1	4	0	1	4	10	6.3
Eastern Ill.	11/22/2025		29:54	3-8	.375	0-0	.000	1-2	.500	2	5	7	5.0	2	1	3	0	1	7	6.5
Totals		3	100:33	11-23	.478	0-0	.000	4-6	.667	8	12	20	5.0	7	8	5	1	5	26	6.5

Player Averages

Games Played	Minutes/ game	Points/ game	FG Pct	3FG Pct	FT Pct	Rebounds/ game	Assists/ game	Turnovers/ game	Assist/Turnover ratio	Steals/ game	Blocks/ game
4	25.1	6.5	47.8	0.0	66.7	5.0	2.0	1.3	1.6	1.3	0.3

CAREER STATS

Season	Team	GP-GS	Min/Avg	Pts/AVG	FGM-A (%)	3PTM-A (%)	FTM-A (%)	Reb/AVG	Def-Off	PF(DQ)	AST	TO	BLK	STL
2021-22	Monmouth	23-0	128/5.6	22/1.0	9-16 (.563)	0-0 (.000)	4-7 (.571)	26/1.1	17-9	14 (0)	4	8	1	6
2022-23	Western Ill.	13-11	280/21.5	96/7.4	36-82 (.439)	4-18 (.222)	20-33 (.606)	39/3.0	33-6	18 (0)	13	18	1	13
2023-24	Governors St.	29-29	872/30.1	342/11.8	131-286 (.458)	20-60 (.333)	60-84 (.714)	170/5.9	129-41	68 (1)	38	40	21	46
2024-25	Governors St.	35-35	1173/33.5	658/18.8	238-419 (.568)	34-83 (.410)	148-192 (.771)	227/6.5	154-73	80 (2)	42	51	22	47
2025-26	CMU	4-3	101/25.2	26/6.5	11-23 (.478)	0-0 (0)	4-6 (.667)	20/5	12-8	7 (0)	8	5	1	5
Total	-	104-78	2554/24.6	1144/11.0	425-826 (.515)	58-161 (.360)	236-322 (.733)	482/4.6	345-137	187 (3)	105	122	46	117

Statistic	Value
Points	15 vs Tarleton St. 11/30/22
Rebounds	8 at Minnesota 11/07/22
Assists	4 at Butler 11/12/25
Steals	4 at Butler 11/12/25, at Chicago St. 11/21/22
Blocks	1 vs Valparaiso 12/09/22, at Butler 11/12/25, at NJIT 12/08/21
FG Made	6 at Chicago St. 11/21/22
FG Attempts	11 vs Eureka 12/03/22
3FG Made	1 4 times
3FG Attempts	7 vs Eureka 12/03/22
FT Made	6 vs Tarleton St. 11/30/22
FT Attempts	9 vs Tarleton St. 11/30/22

BIOGRAPHY

2023-25 (Governors State): Transferred to Central Michigan from NAIA Governors State University of the Chicagoland Collegiate Athletic Conference (CCAC) ... the first player in GSU program history to be named First-Team All-American ... led the Jaguars to first-ever NAIA quarterfinals appearance ... program's sixth 1,000-point scorer, collecting 1,118 points in two seasons ... set single-game scoring record with 44 points against Olivet Nazarene (2/8/25), had a second 40-point game against Indiana Northwest 11 days later ... named NAIA National Player of the Week (2/28/25) ... 14 games with 20-plus points in '24-'25 ... two-time All-CCAC, first team in 2025, second team in 2024

2022-23 (Western Illinois): Transferred to GSU from NCAA I Western Illinois University ... made 13 appearances, starting 11 games and playing 21.5 minutes per contest ... averaged 7.4 points and 3.0 rebounds while shooting 43.9 percent from the field ... three-consecutive double-digit scoring games against Chicago State, Tarleton State and Eureka ... scored a career-high 15 points and grabbed six rebounds against Tarleton State on Nov. 30 ... played double-digit minutes in every appearance including a season-high 30 in Western's 59-45 victory over Chicago State, finishing with 12 points, two rebounds and four steals

2020-22 (Monmouth): Transferred to Western Illinois from NCAA I Monmouth University ... played in 23 games for in 2021-22, averaging 5.6 minutes per contest and shooting 56 percent from the field ... played five minutes and recorded a basket against Syracuse in the season opener at Syracuse on Nov. 10, which also marked her collegiate debut ... had a career-best game with six points and seven rebounds across 17 minutes of action against St. Francis Brooklyn

High School: Graduated from Simley High School in 2020 ... three-time all-conference honoree ... led 2019-20 Spartans to first state tournament appearance since 2014 with a 22-3 record ... four-year record of 73-39

Club: Played for the Minnesota Fury

MAG/NAIA RANKINGS

NON-NAIA CAREER HIGHS

Points: 44 vs. Olivet Nazarene 2/8/25
Rebounds: 18 vs. Olivet Nazarene 2/8/25
Assists: 5 vs. Indiana Northwest 2/28/25
Steals: 5 **2x**, last at St. Francis (IL) 1/10/24
Blocks: 4 **5 2x**, last vs Great Lakes Univ. 11/2/24
Field Goals Made: 17 vs. Olivet Nazarene 2/8/25
Field Goals Attempted: 25 vs. Olivet Nazarene 2/8/25
3PT Field Goals Made: 4 vs. Indiana Northwest 2/19/25
3PT Field Goals Attempted: 7 vs. Briar Cliff 3/22/25
Free Throws Made: 14 vs. Saint Francis (IL) 3/3/25
Free Throws Attempted: 14 vs. Saint Francis (IL) 3/3/25



DEMETRIA “MEACHIE” PREWITT

23

PRONUNCIATION: duh-ME-tree-uh

POSITION: Forward

HEIGHT: 5-10

YEAR: Senior

HOMETOWN: Madison, Wisconsin

HIGH SCHOOL: La Follette High School

PREVIOUS SCHOOL: Kirkwood Community College (IA)

BIOGRAPHY

2024-25: Played in 30 of 31 games, making 13 starts ... team leader in blocks (22), tied for 10th in the MAC ... recorded double-double in CMU debut against Coastal Carolina (11/4/24) with 10 points, season-high 10 rebounds ... CMU's leading rebounder in four games ... led CMU in scoring at Buffalo (1/1/25) with season-high 15 points ... tied career-high eight free throws made, tying for sixth in the MAC with an 8-for-8 night from the stripe ... set team's season-high three blocks vs. Miami (OH) (1/8/25)

2023-24 (Kirkwood CC): Transferred to Central Michigan from 2024 NJCAA II National Champion Kirkwood Community College of the Iowa Community College Athletic Conference (ICAC) ... first-team NJCAA II All-American ... NJCAA II National Championship All-Tournament ... All-ICAC First Team ... four-time ICAC Player of the Week ... led the Eagles with 15.6 points, 7.4 rebounds per game and a 53.5 percent clip from the field; averaged 16.9 points, 8.6 rebounds per game in final six games ... scored season-high 29 points twice (Jan. 3 at Iowa Western, Feb. 7 at Iowa Lakes), added 10 rebounds for her sixth of 13 double-doubles ... logged nine 20-point games, including twice in the NJCAA II tournament ... Academic All-Region First Team ... Fall Dean's List.

2022-23 (Kirkwood CC): ICAC Newcomer of the Year, All-ICAC First Team ... led Eagles to NJCAA II third-place finish in national tournament ... played in 35 games ... scored in double-digits 18 times ... season-high 18 points at Ellsworth (Feb. 11), the seventh of nine straight games in double-figures ... posted three double-doubles ... Academic All-Region First Team ... Fall Dean's List.

High School: Graduated as a seven-time honor roll recipient from La Follette High School in Madison ... Madison Sports Hall of Fame Club Sportswoman of the Year (2022) ... broke the Lancers' single-season record for points (412) and single-game record for made free throws (18) as a senior ... WBCA All-State First Team (2022) ... AP All-State High Honorable Mention (2022) ... Big 8 Conference Player of the Year, Co-Defensive Player of the Year (2022) ... All-Area First Team (2022) ... All-Big 8 First Team (2022, 2019) ... All-Area Honorable Mention (2018) ... member of the Black Student Union and National Honor Society.

Club: Played 17U AAU for Wisconsin Flight Elite out of Appleton, Wis., led program to a fourth-place finish at AAU Nationals (2021) ... played for Capital City Soldiers of Madison (2014-19).

Personal: Daughter of Stephanie and Dionte Prewitt ... has one younger brother, Origin ... father, Dionte, played football at NCAA III Wisconsin-Eau Claire ... intends to major in sport management ... her favorite women's basketball player of all time is Maya Moore ... has been to Texas, Mississippi and Pennsylvania outside of her travel for basketball ... enjoys hanging out with friends and family, going shopping, trying new food spots and watching movies.

"Why CMU?": "I chose Central Michigan University due to the strong relationship I developed with the women's basketball coaching staff and the wonderful welcoming of all the administrative staff, sports team coaches, and supporters around the community I engaged with during my campus tour. The sense of community and vibrant atmosphere I experienced affirmed my desire to become a permanent member of this University!"

Story Time: "One of my favorite memories is winning the NJCAA National Championship with my closest friends I met while playing basketball at Kirkwood Community College. It was an unforgettable experience filled with joy, pride, and the realization of our hard work and collective effort that we have been striving for all season!"

SEASON STATS

Opponent	Date	GS	MIN	Total		3-Pointers		Free throws		Rebounds				PF	A	TO	BLK	STL	PTS	AVG
				FG-FGA	PCT	3FG-3FGA	PCT	FT-FTA	PCT	OFF	DEF	TOT	AVG							
at Ga. Southern	11/03/2025		21:58	4-5	.800	0-0	.000	1-1	1.000	2	2	4	4.0	2	1	0	1	0	9	9.0
Davenport	11/09/2025		07:20	2-2	1.000	0-0	.000	0-0	.000	0	1	1	2.5	1	0	0	0	0	4	6.5
at Butler	11/12/2025		21:07	4-7	.571	0-0	.000	2-3	.667	2	3	5	3.3	3	0	1	0	1	10	7.7
at Detroit Mercy	11/19/2025	*	25:27	3-5	.600	0-0	.000	2-2	1.000	2	7	9	4.8	0	0	3	1	0	8	7.8
Eastern Ill.	11/22/2025	*	23:29	8-10	.800	0-0	.000	1-2	.500	1	1	2	4.2	2	1	1	1	3	17	9.6
Totals		2	99:21	21-29	.724	0-0	.000	6-8	.750	7	14	21	4.2	8	2	5	3	4	48	9.6

Player Averages

Games Played	Minutes/game	Points/game	FG Pct	3FG Pct	FT Pct	Rebounds/game	Assists/game	Turnovers/game	Assist/Turnover ratio	Steals/game	Blocks/game
5	19.9	9.6	72.4	0.0	75.0	4.2	0.4	1.0	0.4	0.8	0.6

CAREER STATS

Season	Team	GP-GS	Min/Avg	Pts/AVG	FGM-A (%)	3PTM-A (%)	FTM-A (%)	Reb/AVG	Def-Off	PF (DQ)	AST	TO	BLK	STL
2022-23	Kirkwood CC	35-0	630/18.0	325/9.3	146-265 (.551)	3-12 (.250)	30-67 (.448)	163/4.7	96-67	61 (2)	35	44	20	42
2023-24	Kirkwood CC	34-34	756/22.2	532/15.6	224-419 (.535)	4-19 (.211)	80-141 (.567)	253/7.4	169-84	69 (1)	81	75	38	49
2024-25	CMU	30-13	577/19.2	172/5.7	68-155 (.439)	0-1 (.000)	36-64 (.563)	125/4.2	74-51	64 (0)	18	45	22	19
2025-26	CMU	5-2	99/19.8	48/9.6	21-29 (.724)	0-0 (0)	6-8 (.075)	21/4.2	14-7	8 (0)	2	5	3	4
Total	-	104-49	2062/19.8	1077/10.4	459-868 (.529)	7-32 (.219)	152-280 (.543)	562/5.4	353-209	202 (3)	136	169	83	114

Statistic	Value
Points	17 vs Eastern Ill. 11/22/25
Rebounds	10 vs Western Mich. 02/22/25, vs Coastal Carolina 11/04/24
Assists	3 vs Portland 11/30/24, vs Ball St. 02/26/25
Steals	3 at Miami (OH) 03/05/25, vs Eastern Ill. 11/22/25
Blocks	3 vs Miami (OH) 01/08/25
FG Made	8 vs Eastern Ill. 11/22/25
FG Attempts	11 vs Toledo 03/12/25
3FG Attempts	1 at Iowa St. 12/08/24
FT Made	8 vs Milwaukee 12/22/24
FT Attempts	8 vs Milwaukee 12/22/24

Field Goal Percentage: 72.4
1st in MAC

Points: 29 at Iowa Lakes Comm. Col. 2/7/24
Rebounds: 13 vs Iowa Western Comm. Col. 3/4/24
Assists: 8 vs Morton Col. 3/21/24
Steals: 7 at Marshalltown Comm. Col. 1/18/23
Blocks: 4 at Illinois Central Col. 11/12/22
Field Goals Made: 13 vs Des Moines Area Comm. Col. 2/21/24
Field Goals Attempted: 23 at Iowa Western Comm. Col. 1/3/24
3PT Field Goals Made: 2 at Iowa Western Comm. Col. 1/3/24
3PT Field Goals Attempted: 5 at Iowa Western Comm. Col. 1/3/24
Free Throws Made: 8 vs Bryant & Stratton 12/30/23
Free Throws Attempted: 12 vs Bryant & Stratton 12/30/23



TAYLOR ANDERSON

24

POSITION: Guard
HEIGHT: 5-10
YEAR: Senior
HOMETOWN: South Lyon, Michigan
HIGH SCHOOL: South Lyon East High School

BIOGRAPHY

2024-25: Played in 30 of 31 games, making 24 starts ... 10th in the MAC in offensive rebounding (2.03) ... led CMU in rebounding twice, set season high of 12 at Northern Illinois (1/29/25) ... made 50th career start against Ohio (2/5/25), 75th career appearance at Toledo (3/1/25) ... scored double-digits twice during the Nevada Nugget Classic: vs. Portland (10 points), vs. Southern Utah (10 points) ... season-high five assists at Toledo

2023-24: Appeared and started in 19 games as a sophomore ... averaged 25.7 minutes per game with four 30-plus minute outings for the second straight season ... ranked first on the team in total steals (37) ... recorded six games with at least three or more steals ... recorded season high 34 minutes against Bradley (Nov. 12) ... scored season high 16 points against Bowling Green (Jan. 3) ... tied career high in rebounds (13) and posted season high three blocks against Indiana State (Dec. 2) ... dished season high five assists against Chicago State (Jan. 21) ... recorded season high five steals against South Alabama (Nov. 9) ... went a perfect 6-6 from the free throw line against Ohio (Jan. 24) ... collected two double-doubles during the season.

2022-23: Played in all 29 games, starting all the final 16 contests as a true freshman ... averaged 22 minutes per game with four 30-plus minute outings ... finished second in MAC in offensive rebounding (2.76 off. rpg) ... led the Chippewas with 44 steals on the season along with the team's runner-up rebounder with 163 (5.6 rpg) ... notched CMU's top two single-game steals performances with six at Miami (Ohio) (Jan. 28) and five v. Ohio (Jan. 25) ... posted first collegiate double-double with season-high 15 points (12 reb.) v. Western Michigan (Jan. 14) ... added a second double-double with season-high 13 rebounds at Miami (Jan. 28), the second of back-to-back 13-rebound affairs ... collected perfect 8-8 from the free throw line at Eastern Illinois (Dec. 18), the most makes for any CMU player for the season ... finished ranked 15th in the MAC in steals per game (1.52).

High School: Earned four letters, two at South Lyon East and two at Detroit Renaissance... two-time Basketball Coaches Association of Michigan (BCAM) All-State selection ... named to the 2022 Detroit Free Press Division 1 All-State First Team ... No. 2-ranked player in Oakland County by the Oakland Press ... named to 2022 Detroit News All-Metro First Team ... led South Lyon East to Lakes Valley Conference (LVC) championships in final two prep seasons ... two-time All-LVC honoree ... 2021-22 Detroit Sports Awards Player of the Year nominee ... two-time BCAM Academic All-State honoree ... named to Detroit News All-Metro First Team during senior year ... led Renaissance to 2020 Detroit Public School League championship ... holds South Lyon East career assist record with 286 and season steals record (113) ... scored 725 points and grabbed 491 rebounds in two years at South Lyon East ... also lettered in track & field.

Club: Played with the Michigan Crossover EYBL from 9th grade to 11th grade.

Personal: Daughter of Tiphonie Anderson-Cokley and Jeffery Burrus... brother Jaydenn Burrus currently playing football for NAIA Madonna University, previously at NCAA III Alma College.

SEASON STATS

Opponent	Date	GS	MIN	Total		3-Pointers		Free throws		Rebounds				PF	A	TO	BLK	STL	PTS	AVG
				FG-FGA	PCT	3FG-3FGA	PCT	FT-FTA	PCT	OFF	DEF	TOT	AVG							
at Ga. Southern	11/03/2025	*	29:56	13-21	.619	1-4	.250	4-4	1.000	0	3	3	3.0	0	1	2	1	0	31	31.0
Davenport	11/09/2025	*	26:14	3-15	.200	0-1	.000	4-6	.667	2	3	5	4.0	3	3	1	0	1	10	20.5
at Butler	11/12/2025	*	30:54	6-19	.316	2-6	.333	0-0	.000	1	3	4	4.0	3	2	4	0	3	14	18.3
at Detroit Mercy	11/19/2025	*	26:52	6-14	.429	4-7	.571	5-5	1.000	2	4	6	4.5	2	4	2	0	0	21	19.0
Eastern Ill.	11/22/2025	*	32:39	4-13	.308	2-6	.333	7-9	.778	2	4	6	4.8	3	2	4	0	0	17	18.6
Totals			5 146:35	32-82	.390	9-24	.375	20-24	.833	7	17	24	4.8	11	12	13	1	4	93	18.6

Player Averages

Games Played	Minutes/game	Points/game	FG Pct	3FG Pct	FT Pct	Rebounds/game	Assists/game	Turnovers/game	Assist/Turnover ratio	Steals/game	Blocks/game
5	29.3	18.6	39.0	37.5	83.3	4.8	2.4	2.6	0.9	0.8	0.2

CAREER STATS

			Field Goals		3-Point		F-Throws		Rebounds												Scoring	
SEASON TEAM	GP-GS	MIN/AVG	FG-FGA	FG%	3FG-3FGA	3FG%	FT-FTA	FT%	OFF	DEF	TOT	AVG	PF-FO	A	TO	BLK	STL	PTS	AVG			
2024-25 CMU	31-27	821/26.5	196-457	.429	35-94	.372	84-103	.816	28	70	98	3.2	56-0	37	61	9	25	511	16.5			
2025-26 CMU	5-5	147/29.3	32-82	.390	9-24	.375	20-24	.833	7	17	24	4.8	11-0	12	13	1	4	93	18.6			
TOTAL	36-32	967/26.9	228-539	.423	44-118	.373	104-127	.819	35	87	122	3.4	67-0	49	74	10	29	604	16.8			

Single Game Highs

Statistic	Value
Points	32 at Dayton 12/15/24
Rebounds	6 5 times
Assists	4 at Michigan 11/14/24, vs Akron 03/08/25, at Detroit Mercy 11/19/25
Steals	3 vs Toledo 01/11/25, vs Concordia (MI) 12/04/24, at Butler 11/12/25
Blocks	1 10 times
FG Made	13 at Dayton 12/15/24, at Ga. Southern 11/03/25
FG Attempts	29 vs Ball St. 02/26/25
3FG Made	6 vs Ohio 02/05/25
3FG Attempts	8 vs Ohio 02/05/25
FT Made	7 vs Eastern Ill. 11/22/25
FT Attempts	9 vs Eastern Ill. 11/22/25

MAC/NCAA RATINGS

Free Throw Percentage: 91.7
7th in MAC

Def. Rebounds Per Game: 4.4
10th in MAC



AYANNA-SARAI “ANA” DARRINGTON

25



PRONUNCIATION: EYE-on-uh sah-RYE DARE-ing-ton

POSITION: Forward
HEIGHT: 6-2
YEAR: Sophomore
HOMETOWN: Lexington, Kentucky
HIGH SCHOOL: Frederick Douglass High School

BIOGRAPHY

Key Notes:
MAC All-Freshman (2025)
21-rebound game vs. Ball State (2/26/25)
- t-6th all-time at CMU
- most by a freshman in NCAA I in 24-25
- season-high in the MAC
2024-25 Season FG percentage (56.5%) 7th all-time at CMU, second in the MAC that season
2024-25: Played in 29 games with 16 starts ... collected 21 rebounds against Ball State (2/26/25); t-6th all-time at CMU, most by a freshman in NCAA I and most by any MAC player this season ... 7th in CMU history, second in the MAC, shooting 56.5 percent from the field, second-most by a freshman ... t-3rd in the MAC with a 9-for-9 game from the field at Toledo (3/1/25), setting season-high of 23 points ... sixth in the MAC with 7.3 rebounds per game, second on team ... sixth in the MAC with seven double-doubles ... scored in double-digits 17 times, double-digit rebounds eight times ... led CMU in scoring in four games, rebounding in nine games ... started 15 of CMU's final 17 games of the season ... made collegiate debut in season-opener against Coastal Carolina (11/4/25) ... made first collegiate start against Oakland (11/24/24)

High School: Graduated from 2023 Region 11 Champion Frederick Douglass High School ... Kentucky Miss Basketball Finalist (2024) ... Region 11 Player of the Year, all-region first team (2024) ... Lexington Herald-Leader City Player of the Year (2024), two-time All-City First Team (2024, 2023) ... KHSAA All-State Third Team (2024) ... exploded for 27 points, 29 rebounds (t-7th in Kentucky history) in 2023 Region 11 Championship game ... finished career with over 1,500 points, 1,000 rebounds ... two-time Kentucky All-Star selection (2024, 2023) ... posted 14 double-doubles as a junior ... also competed in volleyball and track & field.

Club: Lady Magic AAU of Lexington ... won 17U GBA State Championship (2023)

SEASON STATS

Opponent	Date	GS	MIN	Total		3-Pointers		Free throws		Rebounds				PF	A	TO	BLK	STL	PTS	AVG
				FG-FGA	PCT	3FG-3FGA	PCT	FT-FTA	PCT	OFF	DEF	TOT	AVG							
at Ga. Southern	11/03/2025	*	29:56	13-21	.619	1-4	.250	4-4	1.000	0	3	3	3.0	0	1	2	1	0	31	31.0
Davenport	11/09/2025	*	26:14	3-15	.200	0-1	.000	4-6	.667	2	3	5	4.0	3	3	1	0	1	10	20.5
at Butler	11/12/2025	*	30:54	6-19	.316	2-6	.333	0-0	.000	1	3	4	4.0	3	2	4	0	3	14	18.3
at Detroit Mercy	11/19/2025	*	26:52	6-14	.429	4-7	.571	5-5	1.000	2	4	6	4.5	2	4	2	0	0	21	19.0
Eastern Ill.	11/22/2025	*	32:39	4-13	.308	2-6	.333	7-9	.778	2	4	6	4.8	3	2	4	0	0	17	18.6
Totals			5 146:35	32-82	.390	9-24	.375	20-24	.833	7	17	24	4.8	11	12	13	1	4	93	18.6

Player Averages

Games Played	Minutes/ game	Points/ game	FG Pct	3FG Pct	FT Pct	Rebounds/ game	Assists/ game	Turnovers/ game	Assist/Turnover ratio	Steals/ game	Blocks/ game
5	29.3	18.6	39.0	37.5	83.3	4.8	2.4	2.6	0.9	0.8	0.2

CAREER STATS

				Field Goals		3-Point		F-Throws		Rebounds												Scoring	
SEASON	TEAM	GP-GS	MIN/AVG	FG-FGA	FG%	3FG-3FGA	3FG%	FT-FTA	FT%	OFF	DEF	TOT	AVG	PF-FO	A	TO	BLK	STL	PTS	AVG			
2024-25	CMU	31-27	821/26.5	196-457	.429	35-94	.372	84-103	.816	28	70	98	3.2	56-0	37	61	9	25	511	16.5			
2025-26	CMU	5-5	147/29.3	32-82	.390	9-24	.375	20-24	.833	7	17	24	4.8	11-0	12	13	1	4	93	18.6			
TOTAL		36-32	967/26.9	228-539	.423	44-118	.373	104-127	.819	35	87	122	3.4	67-0	49	74	10	29	604	16.8			

Single Game Highs

Statistic	Value
Points	32 at Dayton 12/15/24
Rebounds	6 5 times
Assists	4 at Michigan 11/14/24, vs Akron 03/08/25, at Detroit Mercy 11/19/25
Steals	3 vs Toledo 01/11/25, vs Concordia (MI) 12/04/24, at Butler 11/12/25
Blocks	1 10 times
FG Made	13 at Dayton 12/15/24, at Ga. Southern 11/03/25
FG Attempts	29 vs Ball St. 02/26/25
3FG Made	6 vs Ohio 02/05/25
3FG Attempts	8 vs Ohio 02/05/25
FT Made	7 vs Eastern Ill. 11/22/25
FT Attempts	9 vs Eastern Ill. 11/22/25

MAC/NCAA RATINGS

Rebounds Per Game: 7.25
8th in MAC

Field Goal Percentage: 54.1
8th in MAC

Off. Rebounds Per Game: 4.0
2nd in MAC



JAYDA MOSLEY

30

PRONUNCIATION: MOZE-lee

POSITION: Guard

HEIGHT: 5-7

YEAR: Sophomore

HOMETOWN: Cincinnati, Ohio

HIGH SCHOOL: Purcell Marian High School

SEASON STATS

Opponent	Date	GS	MIN	Total		3-Pointers		Free throws		Rebounds				PF		A	TO	BLK	STL	PTS	AVG
				FG-FGA	PCT	3FG-3FGA	PCT	FT-FTA	PCT	OFF	DEF	TOT	AVG								
at Ga. Southern	11/03/2025		05:21	0-0	.000	0-0	.000	0-0	.000	0	0	0	0.0	1	0	0	0	0	0	0.0	
Davenport	11/09/2025		19:51	3-5	.600	3-5	.600	0-0	.000	1	4	5	2.5	1	1	1	0	0	9	4.5	
at Butler	11/12/2025		02:01	0-1	.000	0-1	.000	0-0	.000	0	0	0	1.7	0	0	0	0	0	0	3.0	
at Detroit Mercy	11/19/2025		16:23	3-5	.600	3-5	.600	0-0	.000	0	3	3	2.0	4	1	0	0	0	9	4.5	
Eastern Ill.	11/22/2025		15:11	2-7	.286	2-7	.286	0-0	.000	0	5	5	2.6	0	1	2	0	0	6	4.8	
Totals		0	58:47	8-18	.444	8-18	.444	0-0	.000	1	12	13	2.6	6	3	3	0	0	24	4.8	

Player Averages

Games Played	Minutes/ game	Points/ game	FG Pct	3FG Pct	FT Pct	Rebounds/ game	Assists/ game	Turnovers/ game	Assist/Turnover ratio	Steals/ game	Blocks/ game
5	11.8	4.8	44.4	44.4	0.0	2.6	0.6	0.6	1.0	0.0	0.0

CAREER STATS

				Field Goals		3-Point		F-Throws		Rebounds									Scoring	
SEASON	TEAM	GP-GS	MIN/AVG	FG-FGA	FG%	3FG-3FGA	3FG%	FT-FTA	FT%	OFF	DEF	TOT	AVG	PF-FO	A	TO	BLK	STL	PTS	AVG
2024-25	CMU	31-5	446/14.4	49-149	.329	44-132	.333	10-13	.769	1	23	24	0.8	36-0	15	32	0	11	152	4.9
2025-26	CMU	5-0	59/11.8	8-18	.444	8-18	.444	0-0	.000	1	12	13	2.6	6-0	3	3	0	0	24	4.8
TOTAL		36-5	505/14.0	57-167	.341	52-150	.347	10-13	.769	2	35	37	1.0	42-0	18	35	0	11	176	4.9

Single Game Highs

Statistic	Value
Points	14 vs Eastern Mich. 01/18/25
Rebounds	5 vs Davenport 11/09/25, vs Eastern Ill. 11/22/25
Assists	2 vs Miami (OH) 01/08/25, vs Coastal Carolina 11/04/24, vs Akron 03/08/25
Steals	2 at Miami (OH) 03/05/25
FG Made	4 4 times
FG Attempts	13 vs Oakland 11/24/24
3FG Made	4 vs Eastern Mich. 01/18/25, at NIU 01/29/25, vs Concordia (MI) 12/04/24
3FG Attempts	12 vs Oakland 11/24/24
FT Made	3 vs Bowling Green 02/01/25, at Western Mich. 01/25/25
FT Attempts	3 vs Bowling Green 02/01/25, at Western Mich. 01/25/25, vs Eastern Mich. 01/18/25

BIOGRAPHY

2024-25: Played in all 31 games, made five starts ... made collegiate debut and first college start in season-opener against Coastal Carolina (11/4/24) ... scored season-high 14 points against Eastern Michigan (1/18/25) ... scored in double figures four times ... played season-high 24 minutes at Northern Illinois (1/29/25)

High School: Graduated from Purcell Marian High School as a three-time state champion (2024, 2023, 2022) ... holds school records for most three-pointers made in a game (11; Jan. 11, 2022 vs. Cincinnati Hills Christian) and in a season (100) ... became the 11th player in Ohio girls' basketball history to reach 100 3PTM in a season, single-game record tied for 10th at the time of the game ... three-time all-state honorable mention (2024, 2023, 2022) ... three-time first-team all-district and All-Miami Valley Conference selection (2024, 2023, 2022) ... Junior Orange Bowl All-Tournament selection (Dec. 30, 2023) ... Ohio Girl's Basketball Report Classic in the City MVP (2022) ... also earned three varsity letters in softball ... three-time first-team All-Miami Valley Conference softball honoree (2024, 2023, 2022) ... was a school ambassador and a member of both the student council and National Honor Society ... earned honor roll status in all eight semesters.

Club: Played for Cincinnati Angels and Legends U

Personal: Daughter of Amy Helton and Kevin Mosley ... has 11 siblings ... intends to major in mechanical engineering with a minor in business ... a favorite personal memory is spending time in Florida with her grandmother, swimming with alligators, being buried in the sand and looking for seashells ... always listens to Rod Wave's Forever before games.

"Why CMU?": "It's home!"

MAC/NCAA RATINGS

Three-Point Percentage: 44.4
8th in MAC



TAYLOR JOHNSON

40

POSITION: Center
HEIGHT: 6-3
YEAR: Junior
HOMETOWN: Cannon Falls, Minnesota
HIGH SCHOOL: Cannon Falls High School
PREVIOUS SCHOOL: College of Southern Idaho

BIOGRAPHY

2024-25: Played in 28 of 31 games, made 11 starts ... scored season-high eight points against Bradley (11/17/24) ... brought down season-high eight rebounds, two blocks against Ohio (2/5/25) ... started 10 of her first 11 games at CMU ... played season-high 24 minutes in regular season finale against Akron (3/8/25)

2023-24 (Southern Idaho): Transferred to Central Michigan from 2024 NJCAA I tournament qualifier College of Southern Idaho (CSI) of the Scenic West Athletic Conference ... played in 33 games with 12 starts ... led the Golden Eagles with a 49.4 percent shooting clip ... averaged 5.9 points, 4.2 rebounds in 13.6 minutes per game ... collected season-high 17 rebounds against Southern Nevada (Feb. 8) ... scored in double-digits seven times ... made Dean's List honors at CSI.

High School: Graduated from Cannon Falls High School as a three-year varsity letterwinner in basketball ... named All-Hiawatha Valley League (2023).

Club: Played for North Tartan EYBL (2022-23) and Minnesota Fury AAU (2021-22) ... was a member of the 2022 Minnesota State Championship North Tartan team.

Personal: Daughter of Teresa and Jesse Johnson ... oldest of four siblings, brothers Aiden and Gavin, and sister Blake ... aunt, Laura Paukert, played basketball at Fresno State (1995-00) ... grandfather, Rod, was the public address announcer for the NBA's Minnesota Timberwolves (1996-17) spanning the tenures of team standouts Kevin Garnett and Kevin Love ... has ridden horses since she was 10 years old, used to show horses competitively ... has lived in nine different states having grown up in a military family.

"Why CMU?": "When I stepped on campus, I immediately fell in love with the environment and the fact that it felt like home away from home. I also loved the coaching staff and everything they had to offer, including becoming the best I can possibly be. I decided it was the best and favorite place for me to be so that is how I ended up here!"

SEASON STATS

Opponent	Date	GS	MIN	Total		3-Pointers		Free throws		Rebounds				PF		A	TO	BLK	STL	PTS	AVG
				FG-FGA	PCT	3FG-3FGA	PCT	FT-FTA	PCT	OFF	DEF	TOT	AVG								
at Ga. Southern	11/03/2025		09:54	0-2	.000	0-0	.000	0-0	.000	1	1	2	2.0	2	0	1	0	0	0	0.0	
Davenport	11/09/2025		09:15	0-2	.000	0-0	.000	0-0	.000	2	4	6	4.0	1	2	0	0	0	0	0.0	
at Butler	11/12/2025		06:25	2-2	1.000	0-0	.000	0-0	.000	0	0	0	2.7	0	0	0	0	0	4	1.3	
at Detroit Mercy	11/19/2025		13:39	0-0	.000	0-0	.000	0-0	.000	1	0	1	2.3	2	1	3	0	0	0	1.0	
Eastern Ill.	11/22/2025		06:02	0-2	.000	0-0	.000	0-0	.000	1	2	3	2.4	1	0	0	0	0	0	0.8	
Totals		0	45:15	2-8	.250	0-0	.000	0-0	.000	5	7	12	2.4	6	3	4	0	0	4	0.8	

Player Averages

Games Played	Minutes/game	Points/game	FG Pct	3FG Pct	FT Pct	Rebounds/game	Assists/game	Turnovers/game	Assist/Turnover ratio	Steals/game	Blocks/game
5	9.0	0.8	25.0	0.0	0.0	2.4	0.6	0.8	0.8	0.0	0.0

CAREER STATS

Season	Team	GP-GS	Min/Avg	Pts/AVG	FGM-A (%)	3PT M-A (%)	FT M-A (%)	Reb/AVG	Def-Off	PF (DQ)	AST	TO	BLK	STL
2023-24	S. Idaho	25-12	379/15.2	158/6.3	67-140 (.479)	0-0 (.000)	24-35 (.686)	119/4.8	62-57	41 (1)	4	25	10	12
2024-25	CMU	28-11	345/12.3	66/2.4	29-68 (.426)	0-0 (.000)	8-11 (.727)	61/2.2	34-27	40 (1)	8	19	8	3
2025-26	CMU	5-0	45/9	4/8	2-8 (.250)	0-0 (.000)	0-0 (.000)	12/2.4	7-5	6 (0)	3	4	0	0
Total	-	58-23	769/13.3	228/3.9	98-216 (.454)	0-0 (.000)	32-46 (.696)	192/3.3	103-89	87 (2)	15	48	18	15

Statistic	Value
Points	8 vs Bradley 11/17/24
Rebounds	8 vs Ohio 02/05/25
Assists	2 at Dayton 12/15/24, vs Davenport 11/09/25
Steals	1 vs Oakland 11/24/24, at Eastern Mich. 02/19/25, vs Akron 03/08/25
Blocks	2 vs Ohio 02/05/25
FG Made	3 6 times
FG Attempts	9 vs Bradley 11/17/24
FT Made	2 vs Milwaukee 12/22/24, vs Bradley 11/17/24, vs Coastal Carolina 11/04/24
FT Attempts	2 5 times

MAC/NCAA RANKINGS

NON-NCAA CAREER HIGHS

Points: 19 vs Utah All-Stars 1/5/24
Rebounds: 17 vs Southern Nevada 2/8/24
Assists: 3 at Southern Nevada 1/27/24
Steals: 3 at Rocky Mountain 12/9/23
Blocks: 5 vs Southern Nevada 2/8/24
Field Goals Made: 9 vs Utah All-Stars 1/5/24
Field Goals Attempted: 12 vs Utah All-Stars 1/5/24
Free Throws Made: 5 vs Southern Nevada 2/8/24
Free Throws Attempted: 5 vs Southern Nevada 2/8/24



MAYLA HAM

1

REDSHIRTING

POSITION: Guard
HEIGHT: 5-11
YEAR: Junior
HOMETOWN: Detroit, Michigan
HIGH SCHOOL: Wayne Memorial High School
PREVIOUS SCHOOLS: Georgetown

BIOGRAPHY

2024-25: Appeared in 28 of 31 games, with three starts ... made first collegiate start at Nevada (11/29/24), played season-high 28 minutes ... scored season-high six points, matched season-high five rebounds at Ball State (1/4/25) ... averaged 13.8 minutes per game

2023-24 (Georgetown): Transferred to Central Michigan from NCAA I Georgetown University of the Big East Conference ... played in 17 games as a freshman for the Hoyas ... made collegiate debut at Temple (Nov. 9) ... scored first collegiate points at Colgate (Dec. 5) ... played season-high 10 minutes twice: at Colgate (Dec. 5), UConn (March 11).

High School: Graduated as a Michigan Miss Basketball Finalist (2023) from Wayne Memorial High School in Detroit ... set the school record for single-game rebounds (18) as a freshman ... led the Zebras to four district championships, two regional championships and state semifinal appearances ... two-time all-state selection (2023, 2022) ... four-time All-Kensington Lakes Activities Association (KLAA) first-team selection (2023, 2022, 2021, 2020) ... Regional Preseason Player of the Year (2022-23) ... named to Basketball Coaches Association of Michigan's (BCAM) Best (2023) ... four-year honor roll recipient.

Club: Played for 1Nation AAU of Detroit

Personal: Daughter of Carla and Marvin Ham ... has two older siblings, sister Bri'Anah and brother Marvin II ... brother, Marvin, was played inside linebacker for Colorado Football (2019-23) ... had two cousins play basketball at Southern Methodist ... her favorite athlete is Mikhiah Herbert Harrigan of the Phoenix Mercury, a member of both the 1,000-point and 200-block clubs at South Carolina, "I really like the passion she plays with and how hard she plays." ... intends to major in marketing with a minor in communication, with hopes of being a network sports broadcaster.

"Why CMU?": "I want to surround myself with coaches who know what basketball is all about! I get to learn from one of the best guards in college basketball history and get to adapt and learn her system of playing. I feel like they will work with me and push me to the best of my ability to become the best version of myself on and off the court. All the coaches have been to where I want to be after college, and I think I can accomplish that with being in this program. They know how to win and that's something that I want to help do!"



KARA BARTELS

3

REDSHIRTING

PRONUNCIATION: CARE-uh BAR-tulls

POSITION: Center
HEIGHT: 6-3
YEAR: Junior
HOMETOWN: West Olive, Mich.
HIGH SCHOOL: Zeeland West High School
PREVIOUS SCHOOLS: Lansing Comm. Col.

BIOGRAPHY

2023-25 at Lansing Community College: Transferred to Central Michigan after two seasons at NJCAA II Lansing Community College (LCC) of the Michigan Community College Athletic Association (MCCAA) ... 2025 NJCAA II All-American Second Team, All-Region XII ... two-time MCCA Western Conference Player of the Year and All-MCCA First Team ... led the Stars to a 51-12 (24-2 MCCA) record and back-to-back Great Lakes District Championship finals ... averaged 16.4 points (49.4 FG%), 9.3 rebounds and 3.4 blocks over 63 games, made 56 starts ... led the Stars in points, rebounds and blocks both seasons ... tallied 26 double-doubles, including career highs of 36 points, 19 rebounds (2/15/25 at Lake Michigan College) ... recorded career-high 13 blocks with 11 points (2/19/25 vs. Southwestern Michigan) ... thirteen games with five-plus blocks

High School: Graduated from Zeeland West High School in 2023 as a four-year varsity girls basketball player ... two-time first-team All-Ottawa-Kent (OK) Conference selection

Club: Played with the Michigan Basketball Association from 2017-23

Personal: Daughter of Linnette and Brian Bartels ... has two older brothers, Keith and Brendan ... her aunt, Kristen Rasmussen, played basketball at Michigan State then in the WNBA from 2000-08 ... enjoys cooking, going on walks with her dog ... used to do mountain bike races with her father, Brian

Why CMU?: "The coaches and the team were incredibly welcoming from the start. They made me feel like I was already a part of the family and that stood out to me! It was clear the coaches truly cared about their players not only as athletes but as people.

"Another big reason was the strong focus on academics. I was really impressed by how many resources are available to help students succeed. It is comforting to know that there are so many people who want to see you do well not only on the court but also in the classroom."

CAREER STATS

				Field Goals		3-Point		F-Throws		Rebounds								Scoring		
SEASON	TEAM	GP-GS	MIN/AVG	FG-FGA	FG%	3FG-3FGA	3FG%	FT-FTA	FT%	OFF	DEF	TOT	AVG	PF-FO	A	TO	BLK	STL	PTS	AVG
2023-24	GTown	17-0	69/4.0	4-17	.235	0-4	.000	0-2	.000	4	6	10	0.6	6-0	0	10	0	6	8	0.5
2024-25	CMU	28-3	385/13.8	19-84	.226	5-32	.156	12-17	.706	16	40	56	2.0	32-0	14	34	0	9	55	2.0
TOTAL FOR CMU		28-3	385/13.8	19-84	.226	5-32	.156	12-17	.706	16	40	56	2.0	32-0	14	34	0	9	55	2.0
TOTAL		45-3	454/10.1	23-101	.228	5-36	.139	12-19	.632	20	46	66	1.5	38-0	14	44	0	15	63	1.4

Single Game Highs

Statistic	Value
Points	6 at Ball St. 01/04/25
Rebounds	5 4 times
Assists	2 vs Oakland 11/24/24, at Ball St. 01/04/25, vs Portland 11/30/24
Steals	3 at Nevada 11/29/24
FG Made	3 at Ball St. 01/04/25
FG Attempts	9 vs Bradley 11/17/24
3FG Made	1 5 times
3FG Attempts	4 vs Milwaukee 12/22/24, vs Bradley 11/17/24
FT Made	5 at Western Mich. 01/25/25
FT Attempts	6 at Western Mich. 01/25/25

CAREER STATS

Season	Team	GP-GS	Min/Avg	Pts/AVG	FG M-A (%)	3PT M-A (%)	FT M-A (%)	Reb/AVG	Def-Off	PF (DQ)	AST	TO	BLK	STL
2023-24	S. Idaho	25-12	379/15.2	158/6.3	67-140 (479)	0-0 (0.000)	24-35 (686)	119/4.8	62-57	41 (1)	4	25	10	12
2024-25	CMU	28-11	345/12.3	66/2.4	29-68 (426)	0-0 (0.000)	8-11 (727)	61/2.2	34-27	40 (1)	8	19	8	3
2025-26	CMU	3-0	24/8	4/1.3	2-6 (.333)	0-0 (0.000)	0-0 (0.000)	8/2.7	5-3	3 (0)	2	1	0	0
Total	-	56-23	748/13.4	228/4.1	98-214 (458)	0-0 (0.000)	32-46 (696)	188/3.4	101-87	84 (2)	14	45	18	15

NON-NCAA CAREER HIGHS

Points: 36 at Lake Michigan College 2/15/25
Field Goals Made: 17 at Lake Michigan College 2/15/25
Field Goals Attempted: 26 vs Calvin Univ. 11/20/23
Free Throws Made: 12 vs Cuyahoga Community College 3/7/24
Free Throws Attempted: 18 at Mott Community College 12/11/23
Rebounds: 19 at Lake Michigan College 2/15/25
Assists: 5 at Kellogg Community College 2/24/24
Steals: 4 6x, last vs Grand Rapids Community College 2/1/25
Blocks: 13 vs. Southwestern Michigan College 2/19/25



KRISTIN HAYNIE

HEAD COACH - Hired April 2023
COACHING EXPERIENCE: 14th

ALMA MATER: Michigan State, 2005 (BA, Family Community Service)
BIRTH DATE: June 17, 1983
HOMETOWN: Mason, Mich.

The 2024-25 campaign set a new course for the program, turning a corner toward progress in its 14-17 mark, 9-9 in MAC play, producing the program's first MAC Tournament appearance since 2021. The Chippewas retained their MAC lead in rebounding, moving into the top five nationally in per-game averages for both total rebounding (43.30, fourth) and rebounding margin (+10.6, fifth) and was eighth in offensive rebounding (16.1). The season was led by MAC Freshman of the Year Madi Morson and fellow All-MAC Freshman Ayanna-Sarai Darrington, the top two freshman in the league in scoring. Morson set a program record with 511 points, the most by a Chippewa in their freshman campaign, breaking a mark that had gone untouched since Sue Nissen's 1987-88 season. Morson also marked the second-best single-game performance by a freshman with 32 points at Dayton (Dec. 15, 2024). Darrington was a steady riser in the rotation, hitting her stride for the conference season as she posted six of seven double-doubles (fifth among NCAA I freshmen), all three 20-point games and a 21-rebound performance against Ball State (Feb. 26, 2025) all after the calendar flip to 2025.

Her inaugural season in 2023-24 began the groundwork for her program with an emphasis on work ethic, as the Chippewas led the MAC—and consistently ranked in the top-20 of NCAA I—in total rebounding. CMU's 64-60 victory at Eastern Michigan early in conference play (Jan. 13, 2024) eliminated the program's first roadblock: a 34-game winless streak in road games, 20 consecutive in league play, that began nearly two full seasons prior to her hire. Later in the month, the Chippewas collected just their second instance of back-to-back conference wins since the program's appearance in the 2021 MAC Championship final, defeating Western Michigan (Jan. 27) at home and Miami (OH) (Jan. 31) on the road.

Former CMU assistant coach and Mid-Michigan legend Kristin Haynie was hired at Central Michigan University in April 2023 to become the 13th head coach in program history.

She is part of the Sue Guevara and Suzy Merchant coaching tree. As two women who have had a tremendous impact on this program and the game nationally, Kristin is a perfect fit for our student-athletes at Central Michigan. It's nice to have her back home in Mount Pleasant to lead our program."

Haynie, who has won at every level of basketball, takes over a Central Michigan Women's Basketball program that has made seven NCAA Tournament appearances, won five Mid-American Conference Tournament titles, captured eight MAC regular season overall/division championships, and advanced to five WNIT appearances.

In her previous stint at Central Michigan as an assistant coach under Sue Guevara (2014-17), Haynie helped lead the Chippewas to the 2017 Mid-American Conference championship with guard Presley Hudson earning MAC Freshman of the Year honors. CMU also claimed the 2016 MAC West Championship. During her time in Mount Pleasant, the Chippewas totaled a 58-38 combined overall record and 36-18 league record.

Haynie completed the 2022-23 season as an assistant coach at her alma mater Michigan State University, where she spent the past four seasons under head coach and Central Michigan graduate Suzy Merchant.

The Spartan legend has cultivated strong coaching ties in the state of Michigan as she came back to East Lansing after working as a basketball skills trainer in western and central Michigan. She worked as a mentor to inspire and motivate athletes to reach their full potential and help them realize their impact off the court.

Haynie began her coaching career as an assistant at Eastern Michigan from 2012-14.

As a point guard, Haynie had a stellar collegiate career at Michigan State, ranking as the career leader in assists (574) and steals (346). She finished her career ranked eighth in MSU history in scoring (1,199 points) and is still 15th in career scoring.

At the time of her graduation, she was just the fourth player in Big Ten history to reach career totals of 1,000 points, 500 rebounds, 500 assists and 300 steals. She is also the Michigan State leader in single-season steals with 117.

The point guard is still one of just three Spartan women's basketball players to record a triple-double and became the first woman to complete a triple double (points, assists, and steals) in the NCAA Tournament.

In 2005, she guided the Spartans to a 33-win season, the Big Ten Championship, the program's first-ever Final Four appearance, and berth in the NCAA Championship Game.

Just weeks after the 2005 National Championship game, Haynie was selected with the ninth pick in the 2005 WNBA Draft by the Sacramento Monarchs. She helped the Monarchs capture the WNBA title in her first season as a pro. She played in 160 games during her WNBA career, spending five seasons in the WNBA from 2005-09 with the Monarchs, Atlanta Dream, and Detroit Shock. During her stint in the WNBA, Haynie played professionally in Italy, Lithuania, Russia, and Greece.

Haynie was inducted into the Michigan State University Hall of Fame in 2017 and the Greater Lansing Sports Hall of Fame in 2016.

CAREER TIMELINE

Central Michigan University
Head Coach (2023-present)
Assistant Coach (2014-17)

Minnesota Lynx (WNBA)
Assistant Coach (April 2023)

Michigan State University
Assistant Coach (2019-23)

Eastern Michigan University
Assistant Coach (2012-14)



CHELSIE BUTLER

ASSOCIATE
HEAD COACH

THIRD SEASON

Chelsie Butler will mark her third season on Central Michigan Women's Basketball's coaching staff in 2025-26, as well as being tasked with the program's recruiting duties, entering the season with a 20-39 record, 13-23 in the MAC. She was elevated to Associate Head Coach in the summer after the 2024-25 campaign.

The 2015 graduate of Marquette joined the Chippewas bench after a two-year stint at Youngstown State.

Butler handled the Penguins' recruiting efforts on head coach John Barnes' staff. She also held key roles with scouting, practice preparation, camps and individual workouts.

YSU earned the Horizon League's automatic bid into the Women's National Invitation Tournament (WNIT) through a 24-win campaign and share of the conference title. Youngstown state opened the 2021-22 season with 15 wins through its first 16 games, marking three separate five-plus game winning streaks for just the second time in school history for a single season.

Butler spent the previous four seasons at Southeastern Louisiana. Prior to her time in Hammond, La., Butler was the graduate manager on the women's basketball staff at Akron, where she collected a master's degree in coaching.

During Butler's tenure with the Lady Lions, the team went from 12th place in the Southland Conference up to second. Butler oversaw Southeastern's post players, opponent scouting and out-of-bounds plays.

Butler spent four seasons playing at Marquette, capped her tenure with a bachelor's degree in broadcasting.

She was the All-Ohio Co-Player of the Year at Minerva High School in Ohio as a senior and was inducted into her alma mater's Hall of Fame in 2017.



JENNA ALLEN

ASSISTANT COACH

THIRD SEASON

Assistant Coach Jenna Allen will enter her third season on the bench for Central Michigan Women's Basketball for the 2025-26 season, entering the season with a 20-39 record, 13-23 in the MAC, through Head Coach Kristin Haynie's first two campaigns.

Allen joined the Central Michigan Women's Basketball Coaching Staff in May 2023. Allen will work closely with the Chippewas' post players while being tasked as the team's liaison to strength & conditioning and athletic training.

Allen joins the CMU women's staff after a four-year professional career for Baxi Ferrol in Spain. Throughout her career overseas she averaged double-digit points and five-plus rebounds per game while shooting well over 50 percent from the field. Her well-decorated 2022-23 campaign saw a career-high 12.6 points per contest on 51.5 percent shooting, culminating in being named the All-Spanish LF Challenge Player, Center and Import Player of the Year on top of the 2023 regular season championship.

Allen, a four-year contributor on the court at Michigan State, became the Spartans' 23rd 1,000-point scorer on March 3, 2019 at Minnesota. Over her final two seasons in East Lansing she started 57 games over 65 appearances including all 33 contests of her senior campaign. For her career, the Bedford, Ind.-native averaged 8.6 points on 50.4 percent shooting from the floor, 4.5 rebounds and 20.3 minutes per game; as a senior her line was 12.5 ppg on 49.8 percent shooting and 6.5 rpg over an average of 27.3 mpg.

The North Lawrence High School graduate, Allen earned a Bachelor's in Kinesiology from Michigan State in 2019.



JORDAN WALKER

ASSISTANT COACH

FIRST SEASON

Jordan Walker joined the Central Michigan Women's Basketball staff for the 2025-26 season, beginning her third season of full-time coaching with the Chippewas.

She had previously made one-year stops at Jacksonville (2024-25) and Mercer (2023-24) after finishing a three-year playing career at Tennessee as a two-time master's graduate.

Walker aided Jacksonville (2024-25) to a 14-17 record, 8-10 in the Atlantic Sun Conference. The Dolphins fell in the first round of the ASUN tournament in overtime against Bellarmine.

At Mercer (2023-24), Walker oversaw guard/point guard development and coached three all-conference guards, which included one all-conference defensive award. She was a WBCA Convention Panelist for the presentation of So You Want To Be A Coach. She was one of three coaches selected as a panelist, with her focus on 'Being the Best Assistant Coach.'

In her playing career between Western Michigan (2017-20) and Tennessee (2020-23), Walker scored over 1,300 points with more than 700 rebounds and 400 assists.

At Tennessee, Walker started in 77 of 96 games played over her three seasons. She averaged 6.3 points, 4.1 rebounds, 3.0 assists, and 1.1 steals during her time in Knoxville. She also helped lead Tennessee to three NCAA Tournament appearances, twice making the Sweet Sixteen (2023, 2022).

At Western Michigan, Walker started in 54 of 64 games. She averaged 11.8 points, 4.9 rebounds, 2.2 assists and 1.8 steals per game. She scored in double figures in 38 of her 64 games and posted three double doubles during her time at WMU. She also had 12 games of 20 or more points and two 30+ point games.

Walker grew up in Muskegon, Michigan where she had a highly successful high school career including being named Miss Basketball in the state of Michigan in 2017. Walker graduated from WMU in 2020 with a bachelor's degree in political science and a minor in communications. She earned a master's degree from Tennessee in business administration (MBA) with a concentration in entrepreneurship and innovation in May of 2022.

She then earned her second master's degree in May of 2023 in the Agricultural Leadership, Education and Communications (ALEC) Department with a concentration on Name, Image, and Likeness and Women's Leadership. Walker was also an active participant in leadership programs such as So You Want To Be A Coach and the inaugural Above The Rim Summit.



RANA EL-HUSSEINI

**ASSISTANT COACH/
PLAYER DEVELOPMENT**

FIRST SEASON

El-Husseini took on the player development role for Central Michigan Women's Basketball ahead of the 2025-26 season, the third under Head Coach Kristin Haynie. She joined the Chippewas after spending her first season in the coaching ranks with NCAA II University of Charleston (WV). The Golden Eagles posted a 16-14 record and advanced to the Mountain East Conference semifinal.

Her collegiate playing career concluded at Mid-American Conference rival Buffalo in 2023-24 after three seasons at NCAA II Edinboro (PA). She was a standout point guard and team captain in both spots.

El-Husseini graduated from Buffalo with a master's in public health, was an All-MAC Tournament Team selection and became the third player in program history to record a triple-double—at 5-foot-3, she was the shortest to do so in NCAA I that season.

At Edinboro, she was a WBCA All-America honorable mention in her junior season with two All-PSAC West First Team nods and the PSAC West Freshman of the Year to her credit and finished her bachelor's in exercise science.

A first-generation Arab American, El-Husseini competed for Lebanon in the 2023 West-Asia Cup and in the pre-qualification tournament in Rwanda for the 2024 FIBA World Cup.

El-Husseini coordinated three non-profit basketball camps in her hometown of Dearborn including equipment, operations and volunteer staff, utilizing funds raised to fund local AAU programs and offer scholarships for college-bound student-athletes.

At both Buffalo and Edinboro, El-Husseini spearheaded food drives that each collected over 1,000 pounds of food to be donated to community food pantries.



AVA DENTON

**DIRECTOR OF
BASKETBALL OPS**

FIFTH SEASON

Ava Denton was retained for a full-time role as Central Michigan Women's Basketball's Director of Basketball Operations in the summer of 2025 upon graduating with master of arts in sports administration from CMU.

As the program's DOBO, she organizes the team's logistics, coordinates team meals, aids in running camps, oversees student managers and more. A longtime team student assistant for the program, Denton took on a graduate assistant role as the DOBO for the Chippewas in the summer of 2024.

A unique role for Denton has been organizing the program's annual Hoops for Hunger contest since the 2022-23 season. The event invites local school districts to attend a midweek contest after a coordinated canned food drive between the districts and the Greater Lansing Food Bank. Denton has taken the lead for both events, conducting meetings with relevant staff and coaches at CMU in executing the event. The two drives she helped organize combined to raise over 30,000 pounds of food.

Denton's relationship with the program began almost as soon as she stepped foot on campus after she graduated from Utica High School in 2021. As the head student manager for the program, she helped with game and practice setup, was the lead among the student assistants, took bench stats and cut practice and game film.

The Utica, Mich.-native completed her bachelor's degree in sport management in 2024 while already in the sports administration graduate program at CMU.



JACKSON MARLAN

**DIRECTOR OF
SCOUTING & VIDEO OPS**

THIRD SEASON

Jackson Marlan will enter his third season with the Central Michigan women's program in 2025-26, his first as Director of Scouting and Video Operations.

Marlan came to Central Michigan Women's Basketball in May 2023, originally to take on the program's Director of Basketball Operations role for the first staff under Head Coach Kristin Haynie. In his position on the Chippewas' staff, Marlan managed and oversaw the administrative and logistical aspects of the basketball program including travel, equipment, apparel and communication.

Marlan transferred from Michigan State University following the spring of 2023 to be a part of Coach Haynie's inaugural staff in Mt. Pleasant after spending time with the Spartans' women's program during Haynie's tenure as an assistant coach.



MCGUIRK ARENA

JOHN G. KULHAVI EVENTS CENTER

Part of the \$22.5 million John G. Kulhavi Events Center (3, 6, 7), McGuirk Arena (1) is home to Kulhavi Court. The maple hardwood surface was brand new when installed during the 2010 renovation.

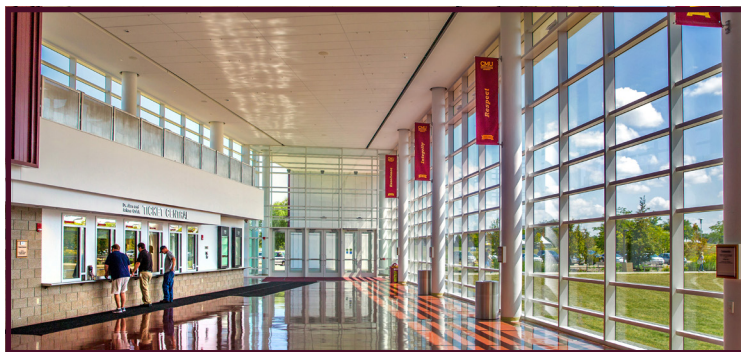
The facility features a pair of club rooms, the largest of which is a 1,600-square-foot space (4) with room for 130 Chippewa fans and plush leather-chair seating for 88. It also features a 360-square-foot outdoor patio and is available for receptions, meetings and banquets.

The renovation upgraded several of the basic amenities for patrons of McGuirk Arena. In addition to 1,400 square feet of dedicated concession space, the number of restrooms in the facility was quadrupled. The chair-back seating ratio climbed from 14 percent to 41 percent, and a climate control system was installed in the facility.

Other functionality upgrades included a satellite training room, improved arena lighting, a dedicated media room (5) and a video scoreboard on the west wall.

Nods to tradition and the history of Mount Pleasant also are present throughout the building. Two facility-length murals line the north and south concourse, paying homage to figures throughout CMU history as well as other facilities and programs on campus.

An auxiliary gymnasium (2), located just feet from the locker room and main competition arena, is named after legendary CMU head coach Dick Parfitt.



About the John G. Kulhavi Events Center

Opened: December 1, 2010

Capacity: 5,300

Square footage: 56,500

Floor space: 15,000 square feet

First game: December 1, 2010 (MBB vs. Temple)

Premium Seat Offerings

- Courtside seats (42)
- Premium seats (724)
- Club seats (88)
- Reserved seats (1,308)

Special Amenities Areas

- 1,600-square-foot club lounge
- Premium seating club room

Other Features

- Multimedia-capable media room
- 300-square-foot video scoreboard

CENTRAL MICHIGAN WOMEN'S BASKETBALL



EXHIBITION

SCHOOLCRAFT COLLEGE
at CENTRAL MICHIGAN44
97McGuirk Arena - Mount Pleasant, Mich.
October 28, 2025 | 6:30 p.m.

GAME

1

CENTRAL MICHIGAN
at GEORGIA SOUTHERN72
98Hill Convocation Center - Statesboro, Ga.
November 3, 2025 | 7 p.m.

Schoolcraft Col. - 44

Record: 0-0

NO. Name	Min	FG M-A	3P M-A	FT M-A	Rebounds OR DR TOT	Fouls PF FD	TP	AS	TO	ST	Blocks BS BA	+/-
5 Ashlee Burchette	16:47	1-7	1-2	1-2	1 0 1	2 1 4	2	3	2	0	0	-21
10 Mariah Scott	21:21	0-5	0-2	0-0	1 0 1	1 0 0	2	2	1	1	0	-32
23 Briana Young	25:13	3-9	0-1	6-9	3 1 4	1 8 12	1	5	1	0	1	-34
30 Amelia Levine	19:13	1-1	1-1	0-0	0 4 4	2 0 3	0	1	0	0	0	-25
32 Riley Abney	31:05	3-13	2-5	0-0	0 2 2	0 1 8	0	2	1	0	0	-47
14 Daija Brown	09:43	0-2	0-0	0-0	2 3 4	0 0 0	0	0	0	0	0	-13
1 Raegan Byrd	22:16	2-7	1-3	3-3	0 2 2	1 3 8	0	5	0	0	0	-41
11 Averi Collins	14:03	2-4	1-1	0-0	1 0 1	2 0 5	0	1	0	0	1	-11
3 Mia Wright	10:44	0-0	0-0	0-0	1 1 2	4 1 0	0	2	0	0	0	-18
15 Pria Johnson-Musah	01:06	0-0	0-0	0-0	0 0 0	1 0 0	0	0	0	0	0	-4
4 Jaya Buschell	15:30	1-5	0-2	0-0	1 0 1	2 0 2	0	0	3	0	0	-15
20 Iyana Stephens	05:19	0-0	0-0	0-0	0 0 0	3 0 0	0	2	0	0	0	-4
12 Kyra Parker	06:02	1-1	0-0	0-0	0 0 0	0 0 0	2	0	1	1	0	-2
33 Ashli Wright	01:38	0-0	0-0	0-0	0 0 0	0 0 0	0	0	0	0	0	2
Team					2 3 5	0 0	0	3				
Totals		14-54	6-17	10-14	10 16 26	23 14 44	5	26	9	0	6	-53

Major Fouls: NONE

Central Michigan - 97

Record: 0-0

NO. Name	Min	FG		3P		FT		Rebounds		Fouls		TP	AS	TO	ST	Blocks		+/-	Shooting By Period											
		M	A	M	A	M	A	OR	DR	OT	PF					FD	BS		BA	1st	FG	3P	FT	1st	FG	3P	FT			
11 Nekhu Mitchell	22:39	10-10	1-1	0-0	3 4	7 0	0 0	21	3	3	5	2	0	50				1st <td>FG<td>3P<td>FT<td>1st<td>FG<td>3P<td>FT</td></td></td></td></td></td></td>	FG <td>3P<td>FT<td>1st<td>FG<td>3P<td>FT</td></td></td></td></td></td>	3P <td>FT<td>1st<td>FG<td>3P<td>FT</td></td></td></td></td>	FT <td>1st<td>FG<td>3P<td>FT</td></td></td></td>	1st <td>FG<td>3P<td>FT</td></td></td>	FG <td>3P<td>FT</td></td>	3P <td>FT</td>	FT					
21 Zarela Chevre	F 26:14	6-10	0-1	3-4	1 2	3 0	2 0	15	5	0	3	0	0	54				3rd	FG <td>3P</td> <td>FT</td> <td>3rd</td> <td>FG<td>3P</td><td>FT</td></td>	3P	FT	3rd	FG <td>3P</td> <td>FT</td>	3P	FT					
25 Ayanna-Sarai Darrington	F 20:13	5-10	0-0	4-6	7 5	12 2	6 14	0	1	0	0	0	0	33				2nd	FG <td>3P</td> <td>FT</td> <td>2nd</td> <td>FG<td>3P</td><td>FT</td></td>	3P	FT	2nd	FG <td>3P</td> <td>FT</td>	3P	FT					
0 Madi Morson	G 19:51	2-8	1-5	3-4	3 6	9 3	3 8	4	1	1	1	0	20																	
10 Rylan Buschell	G 19:50	5-7	2-2	0-0	0 4	4 2	1 12	2	1	0	0	0	43																	
24 Taylor Anderson	22:42	1-5	0-0	2-6	5 7	12 1	4 4	3	2	2	1	0	12																	
2 Lillah Turnbull	20:10	1-9	0-4	2-2	1 2	3 2	3 4	0	2	0	0	0	10																	
30 Jayda Mosley	18:24	3-7	2-6	0-0	1 1	2 2	1 8	1	0	0	0	0	25																	
40 Taylor Johnson	15:22	5-5	0-0	1-4	1 1	2 3	3 11	1	2	0	2	0	12																	
6 Amaya Smith	16:35	0-1	0-1	0-0	0 0	0 0	0 0	0	0	1	1	0	8																	
Team					0 0	0 0	0 0	0	0																					
Totals		38-72	6-20	15-26	22 32	54 14	23 97	18	14	13	6	0	53																	
																			Major Goals: NONE											
																			3rd					FG	3P	FT	3rd	FG	3P	FT
																			1st					FG	3P	FT	1st	FG	3P	FT

Major Fouls: NONE

	SC	CMU
Biggest lead	0 (1 st 10:00)	56 (4 th 2:31)
Best Scoring Run	6 (3 rd 3:02)	16 (1 st 0:29)
Lead Changes	0	
Times Tied	1	
Time with Lead	00:00	39:04

Points from	SC	CMU
Turnovers	9	31
Paint	12	60
Second Chance	2	20
Fast Breaks	6	17
Bench	17	27

Period by Period Scoring	SC	CMU
1st	8	8
2nd	8	16
3rd	12	44
4th	16	22
TOT	32	18

Shooting By Period	1st	2nd	3rd	4th	TOT
1st FG%	10-17	58.8%			
3PT%	4-7	57.1%			
FT%	8-12	66.7%			
2nd FG%	7-20	35.0%			
3PT%	0-7	0.0%			
FT%	4-6	66.7%			
3rd FG%	12-22	54.5%			
3PT%	1-4	25.0%			
FT%	0-2	0.0%			
4th FG%	9-13	69.2%			
3PT%	1-2	50.0%			
FT%	3-6	50%			
GM FG%	38-72	52.8%			
3PT%	6-20	30.0%			
FT%	15-26	57.7%			

Dead Ball Rebounds: 7, 0

Central Michigan - 72

Record: 0-1

NO. Name	Min	FG M-A	3P M-A	FT M-A	Rebounds OR DR TOT	Fouls PF FD	TP	AS	TO	ST	Blocks BS BA	+/-
11 Nekhu Mitchell	F 35:00	4-10	0-1	2-2	1 1 2	1 1 10	1	5	3	0	0	-14
21 Zarela Chevre	F 18:40	1-1	0-0	1-2	1 0 1	4 1 3	0	1	0	0	0	-19
25 Ayanna-Sarai Darrington	F 18:58	3-4	0-0	3-5	3 3 6	2 5 9	1	2	0	0	1	-15
0 Madi Morson	G 29:56	13-21	1-4	4-4	0 3 3	0 6 31	1	2	0	1	1	-13
10 Rylan Buschell	G 34:03	1-4	0-1	0-2	0 0 0	3 3 2	3	4	0	0	1	-22
24 Taylor Anderson	23:49	2-6	0-0	4-4	1 7 8	4 3 8	0	1	0	1	0	-13
40 Taylor Johnson	09:54	0-2	0-0	0-0	1 1 2	2 0 0	0	0	1	0	0	-4
23 Demetria Prewitt	21:58	4-5	0-0	1-1	2 2 4	2 1 9	1	0	0	1	0	-11
30 Jayda Mosley	05:21	0-0	0-0	0-0	0 0 0	1 0 0	0	0	0	0	0	-15
2 Lillah Turnbull	02:21	0-3	0-1	0-0	0 0 0	0 0 0	0	0	0	0	0	-4
Team					1 4 5	0 0	0	0				
Totals		28-56	1-7	15-20	10 21 31	19 20 72	7	16	3	3	3	-26

Major Fouls: Johnson (F1) 2nd 3:42

Shooting By Period	1st	2nd	3rd	4th	TOT
1st FG%	5-11	45.5%			
3PT%	0-0	0.0%			
FT%	5-6	83.3%			
2nd FG%	8-16	50.0%			
3PT%	0-2	0.0%			
FT%	1-1	100%			
3rd FG%	8-15	53.3%			
3PT%	1-2	50.0%			
FT%	2-6	33.3%			
4th FG%	7-14	50.0%			
3PT%	0-3	0.0%			
FT%	7-7	100%			
GM FG%	28-56	50.0%			
3PT%	1-7	14.3%			
FT%	15-20	75.0%			

Dead Ball Rebounds: 3, 0

Georgia Southern - 98

Record: 1-0

NO. Name	Min	FG M-A	3P M-A	FT M-A	Rebounds OR DR TOT	Fouls PF FD	TP	AS	TO	ST	Blocks BS BA	+/-
12 Liv Fuller	F 20:07	0-2	0-1	1-2	1 3 4	1 5 1	3	1	1	0	1	12
24 Kishyah Anderson	F 18:28	8-10	1-1	0-0	1 0 1	3 0 17	0	0	2	0	1	20
30 McKenna Eddings	F 29:39	6-10	5-7	3-5	0 0 0	2 2 20	1	1	0	0	0	14
0 Destiny Garrett	G 36:18	9-12	2-3	2-3	1 6 7	1 4 22	9	1	0	0	0	26
4 Shanti Simmons	G 25:58	3-8	0-3	4-4	1 1 2	4 4 10	4	1	3	0	0	18
5 Kyla Bryant	27:47	3-7	2-3	0-0	1 2 3	0 0 8	1	2	0	0	1	22
41 Kayla Cleveland	09:09	1-3	1-3	0-0	1 0 1	2 1 3	0	2	1	1	0	-3
20 Lia Anderson	19:08	3-5	0-0	0-2	2 2 4	2 2 6	1	0	0	1	0	6
10 Jamira Jones	09:58	4-5	2-3	1-2	0 0 0	4 1 11	3	0	0	1	0	15
3 Neyaeh Brown	02:21	0-1	0-0	0-0	0 1 1	0 0 0	0	1	0	0	0	4
13 Courtenay Lee	01:07	0-0	0-0	0-0	0 0 0	1 0 0	0	0	0	0	0	-2
Team					1 5 6	0 0	0	0				
Totals		37-63	13-24	11-18	9 20 29	20 19 98	22	10	7	3	3	26

Major Fouls: NONE

Shooting By Period	1st	2nd	3rd	4th	TOT
1st FG%	9-16	56.3%			
3PT%	3-7	42.9%			
FT%	0-0	0%			
2nd FG%	6-16	37.5%			
3PT%	4-9	44.4%			
FT%	5-7	71.4%			
3rd FG%	13-18	86.7%			
3PT%	3-4	75.0%			
FT%	6-10	60%			
4th FG%	9-16	56.3%			
3PT%	3-4	75.0%			
FT%	0-1	0%			
GM FG%	37-63	58.7%			
3PT%	13-24	54.2%			
FT%	11-18	61.1%			

Dead Ball Rebounds: 3, 0

	CMU	GASO
Biggest lead	0 (1 st 10:00)	28 (4 th 9:44)
Best Scoring Run	8 (4 th 7:28)	10 (3 rd 3:12)
Lead Changes	0	
Times Tied	0	
Time with Lead	00:00	39:22

Points from	CMU	GASO
Turnovers	14	19
Paint	46	40
Second Chance	15	12
Fast Breaks	4	16
Bench	17	28

Period by Period Scoring	CMU	GASO
1st	15	17
2nd	19	21
3rd	21	72
4th	22	98
TOT	57	21

GAME

2

DAVENPORT
at CENTRAL MICHIGAN44
71McGuirk Arena - Mount Pleasant, Mich.
November 9, 2025 | 1 p.m.

GAME

3

CENTRAL MICHIGAN
at BUTLER68
59Hinkle Fieldhouse - Indianapolis, Ind.
November 12, 2025 | 7 p.m.

Davenport - 44

Record: 0-0

NO. Name		Min	FG		3P		FT		Rebounds		Fouls		TP	AS	TO	ST	Blocks		+/-	Shooting By Period																	
			M	A	M	A	M	A	OR	DR	TOT	PF					FD	BS		BA	1st	FG%	2nd	FG%	3rd	FG%	4th	FG%									
32	Reese Polega	F	31:34	3-5	0-0	0-0	0	7	7	2	2	6	1	1	1	2	0	-31	1st	FG%	4-12	33.3%															
20	Taaria Pehi-Kupa	C	16:35	0-2	0-0	0-2	0	0	0	3	1	0	0	1	1	1	0	-17	3PT%	3-7	42.9%																
2	Hannah Schroeder	G	27:55	2-6	0-0	6-7	2	4	6	1	3	10	2	2	0	1	1	-9	FT%	0-2	0%																
21	Tangee Gagau	G	28:39	2-10	2-7	2-4	0	3	3	3	3	8	0	7	1	0	0	-25	2nd	FG%	4-12	33.3%															
24	Maddie Geers	G	30:37	5-11	1-4	1-7	3	4	7	1	6	12	0	0	1	0	0	-13	3PT%	1-5	20.0%																
1	Anna Axtell		19:59	2-8	1-6	0-0	1	0	1	3	0	5	0	2	1	2	0	-13	FT%	5-8	62.5%																
10	Maya Mitchell		18:27	0-1	0-0	0-0	2	0	2	3	3	0	1	0	1	0	0	-14	3rd	FG%	4-12	33.3%															
33	Kayla Covington		04:37	1-1	0-0	1-3	0	1	1	5	2	3	0	1	0	0	0	6	3PT%	0-3	0.0%																
3	Bri Thomas		08:36	0-4	0-4	0-0	0	0	0	0	0	0	0	1	1	0	0	-14	FT%	2-5	40.0%																
7	Amaya Henderson		13:01	0-1	0-0	0-0	1	0	1	5	0	0	0	0	1	0	3	-5	4th	FG%	3-13	23.1%															
Team							1	4	5	0	0	0	2						3PT%	0-6	0.0%																
Totals				15-49	4-21	10-23	10	23	33	26	20	44	5	18	5	9	1	-27	FT%	3-8	37.5%																
																				GM FG%			15-49			30.6%			3PT%			4-21			19.0%		
																				FT%			10-23			43.5%			Major Fouls:			NONE					

Major Fouls: NONE

Central Michigan - 71

Record: 1-1

NO. Name	Min	FG M-A	3P M-A	FT M-A	Rebounds OR DR TOT	Fouls PF FD	TP	AS	TO	ST	Blocks BS BA	+/-
11 Nekhu Mitchell	F 21:23	1-7	0-3	1-4	2 4 6	4 2 3	3	3	2	0	0	9



GAME NOTES | NOVEMBER 24 AT #24/23 NOTRE DAME

GAME

4

CENTRAL MICHIGAN at DETROIT MERCY

Calihan Hall - Detroit, Mich.
November 19, 2025 | 7 p.m.

87

54

Central Mich. - 87

Record: 1-0

NO. Name	Min	FG M-A	3P M-A	FT M-A	Rebounds OR DR TOT	Fouls PF FD	TP	AS	TO	ST	Blocks BS BA	+/-
11 Nekhu Mitchell	F 29:25	7-11	2-4	1-2	3 2 5	1 4 17	6	4	2	0	0	38
23 Demetria Prewitt	F 25:27	3-5	0-0	2-2	2 7 9	0 1 8	0	3	0	1	0	21
25 Ayanna-Sarai Darrington	F 16:31	8-11	0-0	0-1	2 5 7	2 4 16	1	0	1	1	0	13
0 Madi Morson	G 26:52	6-14	4-7	5-5	2 4 6	2 4 21	4	2	0	0	0	24
10 Rylan Buschell	G 18:56	0-2	0-0	0-0	1 1 2	2 0 0	2	3	0	0	0	2
24 Taylor Anderson	18:51	2-5	1-3	0-0	0 6 6	2 0 5	3	3	0	0	0	9
12 Riley Smith	18:40	3-5	3-5	0-0	0 1 1	2 0 9	2	1	0	0	0	12
40 Taylor Johnson	13:39	0-0	0-0	0-0	1 0 1	2 3 0	1	3	0	0	0	10
30 Jayda Mosley	16:23	3-5	3-5	0-0	0 3 3	4 0 9	1	0	0	0	0	22
2 Lilah Turnbull	15:16	1-3	0-1	0-0	0 3 3	1 0 2	2	2	1	1	0	14
Team					2 5 7	0 0 0			1			
Totals		33-61	13-25	8-10	13 37 50	18 16 87	22	21	4	2	0	33

Major Fouls: NONE

Shooting By Period
1st FG% 7-13 53.8%
3PT% 5-6 83.3%
FT% 7-7 100%
2nd FG% 7-17 41.2%
3PT% 3-7 42.9%
FT% 1-2 50%
3rd FG% 11-18 61.1%
3PT% 1-6 16.7%
FT% 0-1 0%
4th FG% 8-13 61.5%
3PT% 4-6 66.7%
FT% 0-0 0%
GM FG% 33-61 54.1%
3PT% 13-25 52.0%
FT% 8-10 80.0%

Dead Ball Rebounds: 0, 0

Detroit Mercy - 54

Record: 0-1

NO. Name	Min	FG M-A	3P M-A	FT M-A	Rebounds OR DR TOT	Fouls PF FD	TP	AS	TO	ST	Blocks BS BA	+/-
23 Jasmine Edwards	F 30:06	7-15	0-0	4-5	5 3 8	3 5 18	0	2	2	0	1	-27
0 Nisea Burrell	G 26:47	2-3	0-0	2-3	1 2 3	3 3 6	4	1	2	0	0	-21
1 Aaliyah McQueen	G 23:50	1-8	0-3	1-2	3 3 6	2 3 1	3	1	0	0	0	-26
2 Makayla Jackson	G 21:02	2-9	0-1	3-6	1 0 1	3 5 7	0	0	1	0	1	-17
3 Anna Lassan	G 22:21	2-9	1-3	1-1	0 2 2	2 1 6	1	1	0	0	0	-19
4 Myonna Hooper	29:53	1-7	1-5	4-4	0 1 1	0 3 7	0	1	1	0	0	-23
5 Maya Anderson	19:47	2-4	1-1	0-0	0 0 0	1 0 5	0	1	2	0	0	-18
41 Addisen Mastriano	08:47	0-3	0-0	0-0	0 0 0	0 0 0	0	1	0	0	0	-5
13 Brenda Schwartz	06:58	0-2	0-1	0-0	1 0 1	1 0 0	1	0	0	0	0	-5
15 Naima Diawara	06:35	0-2	0-0	0-0	0 1 1	0 0 0	0	1	1	0	0	-2
12 Amaya Burch	03:54	1-2	0-1	0-0	0 1 1	1 0 2	0	0	1	0	0	-2
Team					1 4 5	0 0 0			0			
Totals		18-64	3-15	15-21	12 17 29	16 18 54	8	10	11	0	2	-33

Major Fouls: NONE

Shooting By Period
1st FG% 3-16 18.8%
3PT% 1-6 16.7%
FT% 5-8 62.5%
2nd FG% 4-15 26.7%
3PT% 1-2 50.0%
FT% 5-6 83.3%
3rd FG% 6-14 42.9%
3PT% 1-2 50.0%
FT% 4-5 80%
4th FG% 5-19 26.3%
3PT% 0-5 0.0%
FT% 1-2 50%
GM FG% 18-64 28.1%
3PT% 3-15 20.0%
FT% 15-21 71.4%

Dead Ball Rebounds: 3, 0

	CMU	UDM
Biggest lead	35 (4 th 0:35)	2 (1 st 7:10)
Best Scoring Run	10 (2 nd 9:24)	7 (3 rd 6:29)
Lead Changes	2	
Times Tied	2	
Time with Lead	37:17	00:49

Points from	CMU	UDM
Turnovers	6	10
Paint	32	30
Second Chance	14	8
Fast Breaks	6	8
Bench	25	14

Period by Period Scoring	1st	2nd	3rd	4th	TOT
CMU	26	18	23	20	87
UDM	12	14	17	11	54

GAME

5

EASTERN ILLINOIS at CENTRAL MICHIGAN

54

60

McGuirk Arena - Mount Pleasant, Mich.
November 22, 2025 | 1 p.m.

Eastern Illinois - 54

Record: 0-5

NO. Name	Min	FG M-A	3P M-A	FT M-A	Rebounds OR DR TOT	Fouls PF FD	TP	AS	TO	ST	Blocks BS BA	+/-
1 Ella Lune	F 30:17	2-4	0-2	2-3	0 4 4	5 2 6	0	4	2	0	0	-6
14 Meioshe Mason	F 19:23	1-2	0-0	0-0	0 4 4	2 2 2	1	1	0	0	0	-9
3 Ava Stoller	G 26:47	5-13	1-6	4-4	1 3 4	4 3 15	5	4	2	0	1	1
11 Clara Glad	G 36:27	1-5	1-3	0-0	1 6 7	3 3 3	2	2	1	2	0	-2
21 Tiny Lewis	G 33:00	4-10	2-7	3-3	0 2 2	3 3 13	1	3	0	0	0	6
25 Nyah Hardy	15:45	1-5	1-3	0-0	0 2 2	0 2 3	1	0	1	0	0	-12
50 Abbie Boutlier	20:36	3-7	0-0	1-2	1 5 6	4 1 7	1	2	0	0	0	3
2 Kennedy Davis	05:19	0-2	0-1	0-0	0 1 1	0 0 0	0	0	1	0	0	-7
10 Adriana Arroyo	07:50	1-4	0-2	0-0	1 0 1	1 0 2	0	2	0	0	0	-11
7 Liana Buckhalton	04:37	1-2	1-1	0-0	0 1 1	0 0 3	0	0	0	0	0	7
Team					1 0 1	0 0 0			0			
Totals		19-54	6-25	10-12	5 28 33	22 16 54	11	18	7	2	1	-6

Major Fouls: NONE

Shooting By Period
1st FG% 4-13 30.8%
3PT% 0-0 0%
FT% 0-0 0%
2nd FG% 4-14 28.6%
3PT% 2-7 28.6%
FT% 0-0 0%
3rd FG% 6-14 42.9%
3PT% 2-6 33.3%
FT% 2-4 50%
4th FG% 5-13 38.5%
3PT% 1-6 16.7%
FT% 8-8 100%
GM FG% 19-54 35.2%
3PT% 6-25 24.0%
FT% 10-12 83.3%

Dead Ball Rebounds: 0, 0

Central Michigan - 60

Record: 4-1

NO. Name	Min	FG M-A	3P M-A	FT M-A	Rebounds OR DR TOT	Fouls PF FD	TP	AS	TO	ST	Blocks BS BA	+/-
11 Nekhu Mitchell	F 34:50	1-9	0-3	4-4	1 6 7	1 3 6	3	5	0	0	0	2
12 Riley Smith	F 10:57	0-2	0-2	0-0	0 3 3	2 0 0	0	1	0	0	0	-1
23 Demetria Prewitt	F 23:29	8-10	0-0	0-0	1 2 2	2 1 17	1	1	3	1	0	4
0 Madi Morson	G 32:39	4-13	2-6	7-9	2 4 6	3 10 17	2	4	0	0	2	9
10 Rylan Buschell	G 29:32	2-4	0-0	1-1	1 4 5	3 2 5	3	2	1	0	0	-2
30 Jayda Mosley	15:11	2-7	2-7	0-0	0 5 5	0 3 6	1	2	0	0	0	7
24 Taylor Anderson	16:49	1-6	0-3	0-0	2 1 3	2 0 2	1	2	2	0	0	1
21 Zarela Chevre	29:54	3-8	0-0	1-2	5 7 2	3 3 7	1	3	1	0	0	5
40 Taylor Johnson	06:02	0-2	0-0	0-0	1 2 3	1 0 0	0	0	0	0	0	5
2 Lilah Turnbull	00:37	0-0	0-0	0-0	0 0 0	0 0 0	0	0	0	0	0	0
Team					4 1 5	0 0 0			0			
Totals		21-61	4-21	14-18	14 32 46	16 22 60	13	19	7	1	2	6

Major Fouls: NONE

Shooting By Period
1st FG% 6-15 40.0%
3PT% 2-7 28.6%
FT% 4-4 100%
2nd FG% 3-17 17.6%
3PT% 2-7 28.6%
FT% 3-3 100%
3rd FG% 6-15 40.0%
3PT% 0-4 0.0%
FT% 0-1 0%
4th FG% 6-14 42.9%
3PT% 0-3 0.0%
FT% 7-10 70%
GM FG% 21-61 34.4%
3PT% 4-21 19.0%
FT% 14-18 77.8%

Dead Ball Rebounds: 2, 0

	EIU	CMU
Biggest lead	3 (1 st 8:14)	15 (2 nd 4:20)
Best Scoring Run	6 (2 nd 1:48)	16 (2 nd 5:55)
Lead Changes	2	
Times Tied	3	
Time with Lead	01:42	35:57

Points from	EIU	CMU
Turnovers	20	13
Paint	20	32
Second Chance	2	13
Fast Breaks	5	4
Bench	15	15

Period by Period Scoring	1st	2nd	3rd	4th	TOT
EIU	9	10	16	19	54
CMU	18	11	12	19	60

GAME

6

CENTRAL MICHIGAN at No. 24/23 NOTRE DAME

Joyce Center - South Bend, Ind.
November 24, 2025 | 9 p.m.

GAME

7

PURDUE at CENTRAL MICHIGAN

McGuirk Arena - Mount Pleasant, Mich.
November 30, 2025 | 1 p.m.



CENTRAL MICHIGAN

2025-26 WOMEN'S BASKETBALL

No.	Name	Pos.	Ht.	Yr.	Hometown	High School	Previous School
0	Madi Morson	G	5'8"	So.	Canton, Mich.	Salem	
1	Mayla Ham	G	5'11"	Jr.	Detroit, Mich.	Wayne Memorial	Georgetown
2	Lilah Turnbull	G	5'7"	Fr.	Pittsburgh, Pa.	Western Reserve (OH)	
3	Kara Bartels	C	6'3"	Jr.	West Olive, Mich.	Zeeland West	Lansing CC
10	Rylan Buschell	G	5'6"	Fr.	Belleville, Mich.	Belleville	
11	Nekhu Mitchell	F	6'0"	Sr.	Baltimore, Md.	McDonogh	George Mason
12	Riley Smith	F	6'2"	So.	Miamisburg, Ohio	Archbishop Alter	
21	Zareia Chevre	F	5'10"	5th	St. Paul, Minn.	Simley	Governors State
23	Demetria Prewitt	F	5'10"	Sr.	Madison, Wis.	La Follette	Kirkwood CC
24	Taylor Anderson	G	5'10"	Sr.	South Lyon, Mich.	South Lyon East	
25	Ayanna-Sarai Darrington	F	6'2"	So.	Lexington, Ky.	Frederick Douglass	
30	Jayda Mosley	G	5'7"	So.	Cincinnati, Ohio	Purcell Marian	
40	Taylor Johnson	C	6'3"	Jr.	Cannon Falls, Minn.	Cannon Falls	Southern Idaho

COACHING STAFF

Position	Name	Yr. at CMU	Alma Mater
Head Coach	Kristin Haynie	3rd	Michigan State '05
Associate Head Coach	Chelsie Butler	3rd	Marquette '15, Akron M'17
Assistant Coach	Jenna Allen	3rd	Michigan State '19
Assistant Coach	Jordan Walker	1st	Western Michigan '20, Tennessee M'22, M'23
Asst. Coach/Player Dev.	Rana El-Husseini	1st	Edinboro '23, Buffalo '24
Basketball Operations	Ava Denton	5th	Central Michigan '24, M'25
Video Coordinator	Jackson Marlan	3rd	Central Michigan '25
Grad. Student Assistant	Alyssa Leister	1st	Wayne State '25

PRONUNCIATIONS

0 Madi (MAD-ee) Morson (MORE-sun)	21 Zareia (ZAR-ee-uh) Chevre (SHEV-ree)	HC Kristin (KRISS-tin) Haynie (HAY-knee)
2 Lilah (LIE-luh) Turnbull (TURN-bull)	23 Demetria (duh-ME-tree-uh) Prewitt	AC Rana (RENN-uh) El-Husseini (el-HOO-say-nee)
3 Kara (CARE-uh) Bartels (BAR-tulls)	25 Ayanna-Sarai (EYE-ah-nuh sah-RYE)	OP Ava (AY-vuh) Denton
10 Rylan (RYE-lin) Buschell (BUSH-ull)	Darrington (DARE-ing-ton)	V/S Jackson Marlan (MAR-lin)
11 Nekhu (NAY-koo) Mitchell	30 Jayda Mosley (MOZE-lee)	



CENTRAL MICHIGAN

2025-26 WOMEN'S BASKETBALL



Madi MORSON
G | 5-8 | So.



Mayla HAM
G | 5-11 | Jr.



Lilah TURNBULL
G | 5-7 | Fr.



Kara BARTELS
C | 6-3 | Jr.



Rylan BUSCHELL
G | 5-6 | Fr.



Nekhu MITCHELL
F | 6-0 | Sr.



Riley SMITH
F | 6-2 | So.



Zareia CHEVRE
F | 5-10 | 5th



Demetria PREWITT
F | 5-10 | Sr.



Taylor ANDERSON
G | 5-10 | Sr.



Ayanna-Sarai DARRINGTON
F | 6-2 | So.



Jayda MOSLEY
G | 5-7 | So.



Taylor JOHNSON
C | 6-3 | Jr.



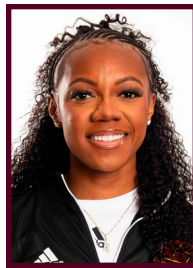
Kristin HAYNIE
Head Coach



Chelsie BUTLER
Assoc. Head Coach



Jenna ALLEN
Asst. Coach



Jordan WALKER
Asst. Coach



Rana EL-HUSSEINI
Player Dev
Asst. Coach



Ava DENTON
Operations



Jackson MARLAN
Video/Scout

PRONUNCIATIONS

0 Madi (**MAD-ee**) Morson (**MORE-sun**)
2 Lilah (**LIE-luh**) Turnbull (**TURN-bull**)
3 Kara (**CARE-uh**) Bartels (**BAR-tulls**)
10 Rylan (**RYE-lin**) Buschell (**BUSH-ull**)
11 Nekhu (**NAY-koo**) Mitchell

21 Zareia (**ZAR-ee-uh**) Chevre (**SHEV-ree**)
23 Demetria (**duh-ME-tree-uh**) Prewitt
25 Ayanna-Sarai (**EYE-ah-nuh sah-RYE**)
Darrington (**DARE-ing-ton**)
30 Jayda Mosley (**MOZE-lee**)

HC Kristin (**KRISS-tin**) Haynie (**HAY-knee**)
AC Rana (**RENN-uh**) El-Husseini (**el-HOO-say-nee**)
OP Ava (**AY-vuh**) Denton
V/S Jackson Marlan (**MAR-lin**)

CHIPPEWA BASKETBALL