



BELLARMINE

WOMEN'S BASKETBALL



2025-26 BELLARMINE WOMEN'S BASKETBALL GAME NOTES

>> TV/LIVE STREAM

ACCNX

>> RADIO

1450 AM/96.1 FM

Broadcaster: Jim Tirey

2025-26 SCHEDULE | H: 1-3; A: 1-6; N 0-1

Date	Opponent	Time
November		
3	SPALDING	W, 77-51
7	MOREHEAD STATE	L, 68-84
13	at Ohio State	L, 33-90
16	MIAMI (OH)	L, 58-77
19	at Wright State	W, 83-76 OT
23	at Bradley	L, 38-67
28	vs. East Tennessee St.^+	L, 49-55
29	EASTERN ILLINOIS+	L, 63-68
30	at No. 23 Louisville+	L, 37-100

December

2	at Illinois	L, 41-90
7	at Chattanooga	L, 73-78
18	at Arizona	L, 59-105
21	at No. 20 Notre Dame	7 PM

January

1	QUEENS*	6:30 PM
3	WEST GEORGIA*	2 PM
8	at Central Arkansas*	7:30 PM
10	at North Alabama*	3 PM
15	AUSTIN PEAY*	6:30 PM
17	EASTERN KENTUCKY*	2 PM
22	NORTH FLORIDA*	6:30 PM
24	JACKSONVILLE*	2 PM
29	at Queens*	7 PM
31	at West Georgia*	2 PM

February

5	at FGCU*	7 PM
7	at Stetson*	2 PM
12	LIPSCOMB*	6:30 PM
14	CENTRAL ARKANSAS*	2 PM
18	NORTH ALABAMA*	5 PM
21	at Austin Peay*	3 PM
25	at Lipscomb*	7 PM
27	at Eastern Kentucky*	7 PM

March

3-9 ASUN Championship

All Times ET

Bold - Home game (Knights Hall)

* - ASUN game | +- MTE | ^ - KFC Yum! Center

DECEMBER 21, 2025 | PURCELL PAVILION | SOUTH BEND, IN



BELLARMINE KNIGHTS

2-10

OVERALL

0-0

ASUN

Monique Reid
HEAD COACH

2-10

CAREER (1st YEAR)

Same

AT BELLARMINE

GAME

13

SERIES: 1st meeting

VS



NO.20 NOTRE DAME FIGHTING IRISH

8-2

OVERALL

1-0

ACC

Niele Ivey
HEAD COACH

125-40

CAREER (6th YEAR)

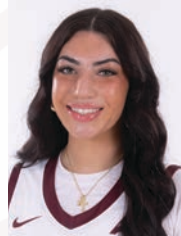
Same

AT ND

MOST RECENT STARTERS



Rachel Shropshire
#2 | FORWARD | SO
4.9 ppg, 3.8 rpg



Ava Smith
#3 | GUARD | SO
8.7 ppg, 3.1 rpg



Kayce Hyman
#12 | FORWARD | SO
5.8 ppg, 2.9 rpg



Haya Abdel Aal
#13 | CENTER | FR
3.7 ppg, 3.6 rpg



Andrea Chiquemba
#14 | FORWARD | R-JR
5.0 ppg, 2.4 rpg

KNIGHTS INSIGHTS

- Bellarmine and Notre Dame are meeting for the first time in series history.
- This is the final nonconference game of the regular season for Bellarmine, and the Knights' last contest in the 2025 portion of the schedule.
- Bellarmine is concluding a 5-game road gauntlet where the Knights faced Louisville (current No. 16 in AP poll), Illinois (RV), Chattanooga and Arizona before squaring off with No. 20 Notre Dame. The Knights played at current No. 21 Ohio State earlier this season.
- In the 6-year D1 era, Bellarmine is 0-7 against opponents ranked in the AP top 25. 4 of those were against intra-city foe Louisville, including this season when the Cardinals were ranked No. 23 in the Nov. 30 contest.
- Bellarmine athletics is no stranger to South Bend. For instance, men's basketball has played twice at Notre Dame in the D1 era, including this season, while the lacrosse teams have met 6 times in series history. In addition, Knights cross country regularly competes in ND's annual National Catholic Championships.
- Bellarmine is returning from a lengthy trip out west to face Notre Dame, as the Knights fell

105-59 to Arizona in Tucson on Thursday. Bellarmine head coach Monique Reid and Arizona head coach Becky Burke were teammates at Louisville from 2008-12.

- Rose Jamison posted a game- and season-high 20 points against Arizona. The redshirt junior forward/guard set a Napa Valley College program record last season with a 45-point performance, and she also had a 37-point game, two 36-point outings and a 32-point output. Jamison's 4 assists against the Wildcats were also a season best.
- Ava Smith distributed a career-high 5 assists against Arizona, and her 13 points were one shy of matching a career best. Heading into the weekend, the sophomore guard ranked 4th in the ASUN in 3-pointers made with 23, including 4 outings of 3 or more triples.
- Sophomore forward Rachel Shropshire tied a career high with 10 points and added a career-best 4 assists against Arizona.
- A plague of injuries has limited Bellarmine to 7-8 players the last 7 games. After a foul out and late-game injury, the Knights finished the Arizona contest with 5 players.

BELLARMINE QUICK FACTS

BELLARMINE UNIVERSITY

Location: Louisville, KY
Address: 2001 Newburg Road; Louisville, KY 40205
Founded: 1950
Enrollment: 3,077
President: Dr. Susan M. Donovan
Director of Athletics: Scott Wiegandt
Senior Associate AD/SWA: Annie Coryell
Nickname: Knights
Colors: Scarlet and Silver
Affiliation: NCAA Division I
Home Arena: Knights Hall
Capacity: 2,283
Assistant AD for Communications: Chad Fischer (502-272-8078)
Asst. Dir. of Athletic Communications/WBB Media Contact: Adam Pruiett (502-272-8079)

TEAM HISTORY

First Year: 1971-72
First Division I Year: 2020-21
Conference: Atlantic Sun Conference
Previous Conference: Great Lakes Valley Conference, Division II (1982-2020)

Division-I Era

ASUN Tournament Appearances: 4
Last ASUN Tournament Appearance: 2025 (Quarter-finals)

Division-II Era

NCAA II Tournament Appearances: 16
Last NCAA II Tournament Appearance: 2017
NCAA II Tournament Record: 11-17
NCAA II Elite Eight Appearances: 4 (1986, 1990, 1991, 1994)
NCAA II Final Four Appearances: 1 (1994)
GLVC Tournament Championships: 1 (2016)
GLVC Regular-Season Championships: 4 (1983, 1986, 1994, 1996)

COACHING STAFF

Head Coach: Monique Reid
Alma Mater: University of Louisville
Season at Bellarmine: 1st
Overall Head Coaching Season: Same
School Record (entering 2025-26): 0-0
Career Record (entering 2025-26): Same
Assistant Coaches: Alison McCarthy, Camille McLellan, Shaqwedia Wallace
Director of Operations: Logan Powell
Graduate Assistant: Clayton Bachman

2024-25 REVIEW

Overall Record: 18-15
Home: 7-7
Away: 9-8
Neutral: 2-0
ASUN: 8-10
ASUN Finish: t-6th

2025-26 AT A GLANCE

Returns/Newcomers: 7/8
Leading Returning Scorers: Miyah Brown (9.6), Erin Toller (8.9), Ashlee Harris (8.0)
Leading Returning Rebounders: Miyah Brown (6.1), Erin Toller (2.3)
Leading Returning Assists: Ashlee Harris (2.3), Miyah Brown (1.6)
Leading Returning 3PT Made: Erin Toller (33), Ashlee Harris (30)
Leading Returning Steals: Ashlee Harris (51), Miyah Brown (44)

2025-26 BELLARMINE KNIGHTS ROSTER

Numerical Roster

NO.	PLAYER	POS.	HT.	YR.	HOMETOWN/HIGH SCHOOL/PREVIOUS
0	Miyah Brown	G	5-10	Sr.	Rockford, IL / Winnebago
2	Rachel Shropshire	F	6-3	So.	Frankfort, KY / Franklin County
3	Ava Smith	G	5-8	So.	Camas, WA / Union / Utah State
4	Triniti Ralston	G	5-5	Jr.	Louisville, KY / Sacred Heart Academy / Southern Indiana
5	Ashlee Harris	G	5-6	Gr.	Louisville, KY / Sacred Heart Academy
7	Rose Jamison	G/F	6-0	R-Jr.	Fairfield, CA / Rodriguez / Napa Valley College
11	Anna Rodgers	G/F	5-11	So.	Mt. Washington, KY / Bullitt East
12	Kayce Hyman	F	5-10	So.	Irmo, SC / Hammond School
13	Haya Abdel Aal	C	6-4	Fr.	Alexandria, Egypt / Alexandria House of English
14	Andrea Chiquemba	F	6-1	R-Jr.	Vila Nova de Gaia, Portugal / Francisco Franco / Detroit Mercy/Eastern Florida State College
20	Erin Toller	G	5-7	Gr.	Louisville, KY / Sacred Heart Academy / Kentucky/Georgetown College
34	Patricia Sherrill	C	6-1	Gr.	Alexandria, VA / Hayfield / Harford CC/Chowan/New Orleans/Long Island
35	Hana Abdel Aal	C	6-2	So.	Alexandria, Egypt / Alexandria House of English
55	Kendall Wingler	G	5-9	Gr.	Ekron, KY / Meade County / Eastern Kentucky/Butler/IU Indy

HEAD COACH: Monique Reid (1st Season)

ASSISTANT COACHES: Alison McCarthy, Camille McLellan, Shaqwedia "Q" Wallace

DIRECTOR OF OPS: Logan Powell | **GRADUATE ASSISTANT:** Clayton Bachman

PRONUNCIATIONS

University – Bellarmine (BELL-er-men)

0 – Miyah Brown (ME-uh)

4 – Triniti Ralston (RAWL-stn)

12 – Kayce Hyman (KAY-see)

13 – Haya Abdel Aal (HI-ya AB-dool All)

14 – Andrea Chiquemba (AN-dree-uh chick-EM-buh)

20 – Erin Toller (TOE-ler)

35 – Hana Abdel Aal (HAWN-uh AB-dool All)

STATS COMPARISON



56.6 POINTS 82.7

.324 FG% .477

.294 3FG% .330

.744 FT% .802

78.4 SCORING DEFENSE 61.1

.421 FG% DEFENSE .404

.288 3FG% DEFENSE .305

-10.7 REBOUND MARGIN +2.1

10.4 ASSISTS 14.7

18.1 TURN-OVERS 13.0

5.2 STEALS 15.7

1.5 BLOCKS 3.5



ATLANTIC SUN CONFERENCE

2025-26 ASUN STANDINGS

As of 12/18/25

Team	ASUN	OVERALL
Austin Peay	0-0	5-2
Bellarmine	0-0	2-10
Central Arkansas	0-0	7-4
Eastern Kentucky	0-0	7-4
FGCU	0-0	3-5
Jacksonville	0-0	7-3
Lipscomb	0-0	3-8
North Alabama	0-0	5-5
North Florida	0-0	5-5
Queens	0-0	5-5
Stetson	0-0	6-2
West Georgia	0-0	5-4

* - Clinched berth in ASUN Tournament

2025-26 ASUN PRESEASON COACHES' POLL

Place	Team (1st-Place Votes)	Pts
1.	FGCU (6)	128
2.	Central Arkansas (3)	124
3.	Stetson (1)	118
4.	Lipscomb	98
5.	EKU (1)	97
6.	North Alabama	77
7.	Jacksonville	73
8.	Austin Peay	61
9.	Bellarmine	49
10.	West Georgia	48
11.	Queens (1)	37
12.	North Florida	26

2025-26 PRESEASON ALL-ASUN TEAM

Player	Team
^Cameron Thomas	Stetson
^Anovia Sheals	Austin Peay
^Bree Stephens	Central Arkansas
^Liz Freihofer	EKU
^Priscilla Williams	Jacksonville
Cerina Rolle	FGCU
Molly Heard	Lipscomb
Aleah Sorrentino	Stetson
Destiny Jones	West Georgia

^ - denotes a unanimous selection

Preseason Player of the Year

Cameron Thomas, Stetson

Preseason Defensive Player of the Year

Bree Stephens, Central Arkansas

2024-25 ASUN STANDINGS

Team	ASUN	OA
FGCU (1)	18-0	30-3
Central Arkansas (2)	15-3	23-10
Lipscomb (3)	12-6	20-12
Eastern Kentucky (4)	10-8	21-12
Stetson (5)	10-8	16-15
North Alabama (6)	8-10	13-17
Jacksonville (7)	8-10	14-17
Bellarmine (8)	8-10	18-15
West Georgia (9)	7-11	13-17
Austin Peay (10)	7-11	13-18
Queens	4-14	10-19
North Florida	1-17	5-26

* - ASUN Tournament seed

HEAD COACH MONIQUE REID

Monique Reid was named the seventh head coach in Bellarmine University women's basketball history in April of 2025.

Before taking the helm of the program, Reid was an assistant coach at Bellarmine for two seasons. She helped the Knights set the program's benchmark for success in the NCAA's highest level in 2024-25, as BU set new Division I-era records for total wins (18), ASUN wins (eight), road wins (nine) and winning streak (six) while also winning its first-ever ASUN Tournament game.



Reid joined the staff as an assistant prior to the 2023-24 season after enjoying an extensive professional playing career overseas. A precursor to the unprecedented D1-era success in 2024-25, Bellarmine's late run included a sweep of Lipscomb and Austin Peay in the final week of the regular season en route to the first of two straight ASUN Tournament bids.

Bellarmine has garnered four All-ASUN accolades, four Academic All-ASUN Team laurels and 11 ASUN weekly awards (Player/Newcomer/Freshman of the Week) in Reid's time at Bellarmine.

Reid retired as a professional player in June of 2023 after a distinguished decade of playing abroad in which the 6-foot-1 small forward captured numerous MVP awards, scoring titles and championships. Her international stops included Germany, Romania, Bulgaria, Israel, Jordan, Egypt, Chile, Puerto Rico, Turkey and Saudi Arabia.

Over a decade, the Louisville native was named MVP four times and earned 10 total championships while frequently winning the scoring title, including in her last full season, which came in Turkey when she averaged 30.9 points per game.

Reid was one of the most prolific players in University of Louisville history and was inducted into its Athletics Hall of Fame in 2023. When she was hired as an assistant at Bellarmine, she still ranked in the program's all-time top 10 in career points (1,725), rebounds (802), field goals made (643) and free throws made (430) in a tenure that spanned from 2008-13.

Reid was named first-team All-Big East as a sophomore and junior and helped lead the Cardinals to the Final Four — and NCAA Tournament runner-up finishes — in 2009 and 2013. As a sophomore, she was also recognized as the Big East Most Improved Player of the Year.

Reid played high school basketball at Fern Creek in Louisville where, over four seasons, she piled up 2,666 career points and 1,558 career rebounds while averaging 25.4 points per game. She was named a Courier Journal first-team All-State selection and the Region 7 Player of the Year her junior and senior seasons, averaging 31.6 points, 19.2 rebounds and 5.7 assists in the latter while being chosen to play for the Kentucky All-Star team.



WOMEN'S BASKETBALL STAFF



ALISON MCCARTHY
Assistant Coach



CAMILLE McLELLAN
Assistant Coach



SHAQWEDIA WALLACE
Assistant Coach



LOGAN POWELL
Director of Operations



CLAYTON BACHMAN
Graduate Assistant

O

MIYAH BROWN

GUARD • SENIOR • 5-10

ROCKFORD, IL | WINNEBAGO HS

2024-25 – JUNIOR

ASUN Honor Roll recipient...Led team in field goal percentage (.446) while ranking second in rebounding (6.1), tied for second in blocked shots (13) and was third in steals (4.4) and free throw attempts (10.2), fourth in scoring (9.6) and free throws made (7.0) and fifth in assists (1.6), free throw percentage (.686) and minutes per game (29:38)... At conclusion of ASUN Tournament, tied for 10th in the conference in total steals and was 16th in rebounding...In ASUN play, averaged 9.7 points and 6.9 rebounds per game...Started all 33 of the team's games...Led or tied for team lead in rebounding on six occasions...Scored in double figures in 17 contests, tying a season high with 21 points apiece against Midway on Nov. 6 and West Georgia on Jan. 16.

2023-24 – SOPHOMORE

Led team in field-goal percentage (45.1) and blocked shots (16) while ranking second in rebounding (6.1, first in total rebounds with 177), free throws made (5.4) and free-throw attempts (8.1)...Was third in scoring (9.9), tied for third in assists (1.7) and was fourth in total steals (3.2)...Appeared in all 29 games with 27 starts and averaged 28.1 minutes, good for third on the team...Ranked 12th in ASUN in rebounding...In ASUN play, averaged 11.3 points and 6.1 rebounds...Scored in double figures in 15 games, including 12 with 14 points or more, and grabbed six rebounds or more in 21 outings...Led or tied for team lead in rebounding on eight occasions and in scoring on four.

2022-23 – FRESHMAN

As a freshman, appeared in all 31 games with 11 starts and was fifth on team in minutes at 23.4 per game...Ranked second on team in total steals (3.5), was third in rebounding (3.5), assists (1.7) and free-throw attempts (7.3), was fourth in scoring (5.0), field goals made (5.5) and free throws made (4.2) and was tied for fourth in total blocks (10)... Averaged 6.3 points and 3.9 rebounds in ASUN play.

HIGH SCHOOL

Played high school basketball at Winnebago in Illinois...Joined 1,000-point club as a sophomore and went on to become school's all-time leading scorer...Holds the school record for most points scored in a game with 46.



2025-26 GAME-BY-GAME STATS

CAREER HIGHS

Statistic	Value
Points	21 4 times
Rebounds	13 at Lipscomb 02/13/25
Assists	8 vs Asbury 12/09/23
Steals	5 at North Florida 01/25/24
Blocks	4 at Evansville 11/29/23
FG Made	9 at West Ga. 01/16/25, vs Midway 11/06/24, vs Austin Peay 03/02/24
FG Attempts	18 at North Ala. 02/17/24
3FG Made	2 at FGCU 01/28/23, at USC Upstate 11/30/24, vs Central Ark. 01/04/25
3FG Attempts	4 at FGCU 01/28/23
FT Made	9 vs Jackson St. 11/29/24
FT Attempts	11 vs Ohio 12/30/23

CAREER STATS

				Field Goals		3-Point		F-Throws		Rebounds				Scoring						
SEASON	TEAM	GP-GS	MIN/AVG	FG-FGA	FG%	3FG-3FGA	3FG%	FT-FTA	FT%	OFF	DEF	TOT	AVG	PF-FO	A	TO	BLK	STL	PTS	AVG
2022-23	BU	31-11	725/23.4	55-188	.293	3-15	.200	42-73	.575	39	68	107	3.5	81-1	54	65	10	35	155	5.0
2023-24	BU	29-27	814/28.1	116-257	.451	2-13	.154	54-81	.667	77	100	177	6.1	91-7	49	61	16	32	288	9.9
2024-25	BU	33-33	978/29.6	119-267	.446	8-21	.381	70-102	.686	78	122	200	6.1	108-5	54	55	13	44	316	9.6
TOTAL		93-71	2517/27.1	290-712	.407	13-49	.265	166-256	.648	194	290	484	5.2	280-13	157	181	39	111	759	8.2

2

RACHEL SHROPSHIRE

FORWARD • SOPHOMORE • 6-3

FRANKFORT, KY | FRANKLIN COUNTY



2024-25 – FRESHMAN

ASUN Honor Roll recipient...As a freshman, appeared in 14 games and logged 67 minutes... Amassed 13 points, 19 rebounds and two blocks...Connected on four of her nine attempts from the floor...Scored a season-high six points against Indiana on Dec. 15 while blocking a shot and hauling in three rebounds...Grabbed a season-high four rebounds against Austin Peay on Jan. 11.

HIGH SCHOOL

Played one year of high school basketball at Frankfort in Kentucky before final three seasons came at Franklin County...Was a four-year starter...Averaged 9.0 points and 5.9 rebounds as a freshman, 3.9 and 3.2 as a sophomore, 10.6 and 4.6 as a junior and 9.5 and 4.1 as a senior...Shot 35.7 percent and 39.6 percent from 3-point range her last two seasons...Was an All-State selection her senior year and was a two-time All-District and two-time All-Region honoree while earning an All-Tournament Team nod...Helped lead team to KHSAA Sweet 16 as a sophomore and senior, with squad winning three district titles and two regional championships during her tenure...Franklin County went 28-8, 26-8 and 30-7 in her three seasons...Member of Academic All-State Team and Honor Roll on multiple occasions...Played AAU ball for No Limits and Richmond Heat as a sophomore, winning a tournament in South Carolina with the Heat...Competed for Lady Vision as a junior and team placed fourth in Under Armour Finals tournament.

2025-26 GAME-BY-GAME STATS

Opponent	Date	GS	MIN	Total		3-Pointers		Free throws		Rebounds				PF	A	TO	BLK	STL	PTS	AVG
				FG-FGA	PCT	3FG-3FGA	PCT	FT-FTA	PCT	OFF	DEF	TOT	AVG							
Spalding	11/03/2025		23:53	3-6	.500	2-4	.500	1-2	.500	2	4	6	6.0	3	1	2	0	2	9	9.0
Morehead St.	11/07/2025		10:16	0-1	.000	0-1	.000	0-0	.000	0	2	2	4.0	5	0	2	1	0	0	4.5
at Ohio St.	11/13/2025	*	18:57	1-7	.143	1-5	.200	1-2	.500	1	2	3	3.7	4	0	2	0	0	4	4.3
Miami (OH)	11/16/2025		21:35	0-2	.000	0-1	.000	0-0	.000	0	1	1	3.0	2	0	3	1	1	0	3.3
at Wright St.	11/19/2025		20:47	2-6	.333	1-3	.333	0-0	.000	0	1	1	2.6	4	0	1	0	0	5	3.6
at Bradley	11/23/2025		18:46	0-4	.000	0-1	.000	0-0	.000	0	2	2	2.5	0	0	2	0	0	0	3.0
vs ETSU	11/28/2025		21:31	3-5	.600	2-2	1.000	1-3	.333	1	4	5	2.9	1	0	4	1	0	9	3.9
Eastern Ill.	11/29/2025	*	21:16	0-4	.000	0-3	.000	1-2	.500	0	3	3	2.9	4	1	1	0	0	1	3.5
at Louisville	11/30/2025	*	30:54	3-8	.375	3-4	.750	1-4	.250	1	2	3	2.9	0	1	6	0	2	10	4.2
at Illinois	12/02/2025	*	21:34	1-7	.143	0-1	.000	1-2	.500	1	6	7	3.3	5	1	1	0	0	3	4.1
at Chattanooga	12/07/2025	*	29:55	2-3	.667	2-2	1.000	2-2	1.000	1	7	8	3.7	4	1	4	0	0	8	4.5
at Arizona	12/18/2025	*	36:21	3-9	.333	2-7	.286	2-2	1.000	0	4	4	3.8	0	4	6	1	1	10	4.9
Totals			6 275:46	18-62	.290	13-34	.382	10-19	.526	7	38	45	3.8	32	9	34	4	6	59	4.9

CAREER HIGHS

Statistic	Value
Points	10 at Louisville 11/30/25, at Arizona 12/18/25
Rebounds	8 at Chattanooga 12/07/25
Assists	4 at Arizona 12/18/25
Steals	2 at Louisville 11/30/25, vs Spalding 11/03/25
Blocks	1 6 times
FG Made	3 4 times
FG Attempts	9 at Arizona 12/18/25
3FG Made	3 at Louisville 11/30/25
3FG Attempts	7 at Arizona 12/18/25
FT Made	3 at Indiana 12/15/24
FT Attempts	5 at Indiana 12/15/24

Player Averages

Games Played	Minutes/game	Points/game	FG Pct	3FG Pct	FT Pct	Rebounds/game	Assists/game	Turnovers/game	Assist/Turnover ratio	Steals/game	Blocks/game
12	23.0	4.9	29.0	38.2	52.6	3.8	0.8	2.8	0.3	0.5	0.3

CAREER STATS

				Field Goals		3-Point		F-Throws		Rebounds									Scoring	
SEASON	TEAM	GP-GS	MIN/AVG	FG-FGA	FG%	3FG-3FGA	3FG%	FT-FTA	FT%	OFF	DEF	TOT	AVG	PF-FO	A	TO	BLK	STL	PTS	AVG
2024-25	BU	14-0	68/4.9	4-9	.444	1-3	.333	4-6	.667	7	12	19	1.4	7-0	0	2	2	0	13	0.9
2025-26	BU	12-6	276/23.0	18-62	.290	13-34	.382	10-19	.526	7	38	45	3.8	32-2	9	34	4	6	59	4.9
TOTAL		26-6	344/13.2	22-71	.310	14-37	.378	14-25	.560	14	50	64	2.5	39-2	9	36	6	6	72	2.8

3

AVA SMITH

GUARD • SOPHOMORE • 5-8

CAMAS, WA | UNION HS | UTAH STATE UNIVERSITY

2024-25 – FRESHMAN (UTAH STATE)

Appeared in 17 games with one start, averaging 1.1 points in 8.9 minutes per game... Made her first career start against New Mexico... Scored a season-high nine points against San Diego State, going 3-of-6 from 3-point range... Posted a season-high three rebounds versus Utah and a season-high three assists against New Mexico.

HIGH SCHOOL

Was a four-year letter winner at Union High School in Washington...Scored over 1,000 points in her prep career...Was a three-time team captain, four-time All-League honoree, including earning first-team accolades for three-straight years, and a three-time All-Region selection...As a senior in 2023-24, averaged 14.9 points, 5.1 rebounds, 2.7 assists and 2.0 steals per game...Helped the Titans go 19-5, setting a school record for most wins in a season...Played club basketball for one of the nation's premier AAU programs, Tree of Hope EYBL...Helped her squad win the AAU National Championship in 2023...Was one of just three players from the state of Washington named as a McDonald's All-American nominee, joining two of her AAU teammates.



2025-26 GAME-BY-GAME STATS

Opponent	Date	GS	MIN	Total		3-Pointers		Free throws		Rebounds				PF	A	TO	BLK	STL	PTS	AVG
				FG-FGA	PCT	3FG-3FGA	PCT	FT-FTA	PCT	OFF	DEF	TOT	AVG							
Spalding	11/03/2025		19:13	2-6	.333	1-5	.200	0-0	.000	0	2	2	2.0	2	0	0	0	2	5	5.0
Morehead St.	11/07/2025		19:45	5-7	.714	4-4	1.000	0-0	.000	0	2	2	2.0	2	0	0	0	0	14	9.5
at Ohio St.	11/13/2025		29:28	1-9	.111	1-5	.200	0-0	.000	0	4	4	2.7	0	3	1	0	1	3	7.3
Miami (OH)	11/16/2025		26:19	4-7	.571	2-4	.500	1-2	.500	0	3	3	2.8	1	1	1	0	0	11	8.3
at Wright St.	11/19/2025	*	35:28	2-10	.200	0-5	.000	6-8	.750	2	2	4	3.0	0	2	2	0	0	10	8.6
at Bradley	11/23/2025	*	31:03	4-11	.364	2-7	.286	0-0	.000	1	3	4	3.2	0	1	3	0	0	10	8.8
vs ETSU	11/28/2025	*	27:44	0-6	.000	0-5	.000	2-2	1.000	1	3	4	3.3	1	0	1	0	0	2	7.9
Eastern Ill.	11/29/2025		33:40	3-11	.273	2-8	.250	0-0	.000	0	2	2	3.1	2	1	3	0	1	8	7.9
at Louisville	11/30/2025	*	34:35	3-12	.250	1-6	.167	0-0	.000	0	2	2	3.0	0	3	3	1	0	7	7.8
at Illinois	12/02/2025		28:50	3-11	.273	3-9	.333	0-0	.000	1	4	5	3.2	1	2	2	0	1	9	7.9
at Chattanooga	12/07/2025	*	36:09	4-11	.364	4-10	.400	0-0	.000	0	0	0	2.9	0	2	2	0	0	12	8.3
at Arizona	12/18/2025	*	34:03	5-11	.455	3-4	.750	0-0	.000	2	3	5	3.1	3	5	5	0	0	13	8.7
Totals			6 356:18	36-112	.321	23-72	.319	9-12	.750	7	30	37	3.1	12	20	23	1	5	104	8.7

Player Averages

Games Played	Minutes/game	Points/game	FG Pct	3FG Pct	FT Pct	Rebounds/game	Assists/game	Turnovers/game	Assist/Turnover ratio	Steals/game	Blocks/game
12	29.7	8.7	32.1	31.9	75.0	3.1	1.7	1.9	0.9	0.4	0.1

CAREER HIGHS

Statistic	Value
Points	14 vs Morehead St. 11/07/25
Rebounds	5 at Illinois 12/02/25, at Arizona 12/18/25
Assists	5 at Arizona 12/18/25
Steals	2 vs Kansas City 11/04/24, vs Spalding 11/03/25
Blocks	1 at Louisville 11/30/25
FG Made	5 vs Morehead St. 11/07/25, at Arizona 12/18/25
FG Attempts	12 at Louisville 11/30/25
3FG Made	4 vs Morehead St. 11/07/25, at Chattanooga 12/07/25
3FG Attempts	10 at Chattanooga 12/07/25
FT Made	6 at Wright St. 11/19/25
FT Attempts	8 at Wright St. 11/19/25

CAREER STATS

				Field Goals		3-Point		F-Throws		Rebounds				Scoring						
SEASON	TEAM	GP-GS	MIN/AVG	FG-FGA	FG%	3FG-3FGA	3FG%	FT-FTA	FT%	OFF	DEF	TOT	AVG	PF-FO	A	TO	BLK	STL	PTS	AVG
2024-25	USU	17-1	149/8.8	7-38	.184	4-25	.160	1-3	.333	7	10	17	1.0	10-0	13	14	0	6	19	1.1
2025-26	BU	12-6	356/29.7	36-112	.321	23-72	.319	9-12	.750	7	30	37	3.1	12-0	20	23	1	5	104	8.7
TOTAL FOR BU		12-6	356/29.7	36-112	.321	23-72	.319	9-12	.750	7	30	37	3.1	12-0	20	23	1	5	104	8.7
TOTAL		29-7	505/17.4	43-150	.287	27-97	.278	10-15	.667	14	40	54	1.9	22-0	33	37	1	11	123	4.2

4

TRINITY RALSTON

GUARD • JUNIOR • 5-5

LOUISVILLE, KY | SACRED HEART ACADEMY | UNIVERSITY OF SOUTHERN INDIANA



2024-25 – SOPHOMORE (SOUTHERN INDIANA)

Started all 35 games appeared in as a sophomore and averaged 28.9 minutes per game...Posted 9.1 points, 3.0 rebounds, 2.8 assists and 2.3 steals (fourth in OVC) per outing...Second on the team with 98 total assists (eighth in OVC) and 79 total steals (second in OVC)...Shot 37.5 percent (93-248) overall and over 36 percent (42-116) from beyond the arc...Connected at nearly 73 percent (91-125) at the free-throw line...Scored in double figures in 14 games...Tied a career best with 25 points at Tennessee Tech on Jan. 2...Led USI in scoring in back-to-back games with 17 points in USI's 82-75 win at Murray State on Nov. 12 and with 19 points in a 88-41 win against IU Southeast on Nov. 15...Ended the season with 15 points in the WNIT Super Sixteen against Buffalo on March 27...Recorded a career-high seven steals in USI's 70-45 victory against Oakland City on Dec. 7, marking the first time a USI player had seven or more steals in a game in over four years...Dished out five or more assists four times and had five games with five or more steals.

2023-24 – FRESHMAN (SOUTHERN INDIANA)

Played in all 32 games, averaging 18 minutes per game as a freshman...Helped USI win the 2023-24 OVC regular season and tournament championships...Posted 5.2 points, 2.3 rebounds, 1.9 assists and 1.4 steals per game...Was second on the team with 62 total assists and 44 steals...Broke into double-digit scoring for the first time with 10 points in a 72-64 win at Morehead State...Set a new high mark with 25 points in the 69-64 WNIT first-round win against UIC after dropping 14 points in the 81-53 OVC Tournament Championship victory against UT Martin...Grabbed a career-high 11 rebounds in the 86-37 win against Brescia (Ky.) on Dec. 22.

HIGH SCHOOL

Played at Sacred Heart Academy in Kentucky...Her team won three consecutive state championships from 2021-23...Averaged 7.7 points, 4.0 rebounds, 5.1 assists and 2.8 steals per game as a senior in 2022-23...Nominated for the 2023 McDonald's All-American game...three-time first-team All-District and All-Region...Was also named second-team All-State in 2021 and 2022 and third-team All-State in 2023.

2025-26 GAME-BY-GAME STATS

Opponent	Date	GS	MIN	Total		3-Pointers		Free throws		Rebounds				PF	A	TO	BLK	STL	PTS	AVG
				FG-FGA	PCT	3FG-3FGA	PCT	FT-FTA	PCT	OFF	DEF	TOT	AVG							
Spalding	11/03/2025	*	28:42	2-8	.250	0-1	.000	9-11	.818	0	10	10	10.0	1	6	2	0	1	13	13.0
Morehead St.	11/07/2025	*	27:46	5-14	.357	1-3	.333	7-7	1.000	0	6	6	8.0	5	3	2	0	0	18	15.5
at Ohio St.	11/13/2025	*	26:59	2-6	.333	1-2	.500	2-6	.333	0	3	3	6.3	3	0	4	0	1	7	12.7
Miami (OH)	11/16/2025	*	33:05	4-11	.364	1-3	.333	12-12	1.000	0	6	6	6.3	3	4	5	0	2	21	14.8
at Wright St.	11/19/2025	*	39:14	7-13	.538	1-3	.333	7-8	.875	1	14	15	8.0	2	7	2	0	4	22	16.2
at Bradley	11/23/2025	*	15:20	1-5	.200	0-1	.000	2-2	1.000	0	3	3	7.2	1	1	2	0	0	4	14.2
vs ETSU	11/28/2025	*	34:24	1-8	.125	0-1	.000	6-8	.750	0	8	8	7.3	5	1	3	0	2	8	13.3
Eastern Ill.	11/29/2025	*	35:58	8-16	.500	0-1	.000	9-9	1.000	1	6	7	7.3	1	4	6	0	2	25	14.8
at Louisville	11/30/2025	*	15:44	0-4	.000	0-1	.000	2-2	1.000	1	3	4	6.9	0	0	2	0	1	2	13.3
at Illinois	12/02/2025	*	28:48	1-7	.143	0-3	.000	5-6	.833	0	1	1	6.3	1	2	6	0	4	7	12.7
at Chattanooga	12/07/2025	*	35:23	7-12	.583	2-3	.667	10-11	.909	0	4	4	6.1	2	9	5	0	2	26	13.9
Totals			11	321:23	.365	6-22	.273	71-82	.866	3	64	67	6.1	24	37	39	0	19	153	13.9

Player Averages

Games Played	Minutes/ game	Points/ game	FG Pct	3FG Pct	FT Pct	Rebounds/ game	Assists/ game	Turnovers/ game	Assist/Turnover ratio	Steals/ game	Blocks/ game
11	29.2	13.9	36.5	27.3	86.6	6.1	3.4	3.5	0.9	1.7	0.0

CAREER HIGHS

Statistic	Value
Points	26 at Chattanooga 12/07/25
Rebounds	15 at Wright St. 11/19/25
Assists	9 at Chattanooga 12/07/25
Steals	7 vs Oakland City 12/07/24
Blocks	1 6 times
FG Made	9 at Tennessee Tech 01/02/25
FG Attempts	16 at Tennessee Tech 01/02/25, vs Eastern Ill. 11/29/25
3FG Made	4 at Tennessee Tech 01/02/25, vs UT Martin 03/09/24
3FG Attempts	7 vs Buffalo 03/27/25, vs UT Martin 12/21/24, vs UT Martin 03/09/24
FT Made	12 vs Miami (OH) 11/16/25
FT Attempts	12 vs Miami (OH) 11/16/25

CAREER STATS

				Field Goals		3-Point		F-Throws		Rebounds				Scoring						
SEASON	TEAM	GP-GS	MIN/AVG	FG-FGA	FG%	3FG-3FGA	3FG%	FT-FTA	FT%	OFF	DEF	TOT	AVG	PF-FO	A	TO	BLK	STL	PTS	AVG
2023-24	USI	32-0	576/18.0	52-120	.433	14-42	.333	49-65	.754	7	65	72	2.3	65-0	62	73	3	44	167	5.2
2024-25	USI	35-35	1009/28.8	93-248	.375	42-116	.362	91-125	.728	13	93	106	3.0	87-4	98	71	3	79	319	9.1
2025-26	BU	11-11	321/29.2	38-104	.365	6-22	.273	71-82	.866	3	64	67	6.1	24-2	37	39	0	19	153	13.9
TOTAL FOR BU		11-11	321/29.2	38-104	.365	6-22	.273	71-82	.866	3	64	67	6.1	24-2	37	39	0	19	153	13.9
TOTAL		78-46	1906/24.4	183-472	.388	62-180	.344	211-272	.776	23	222	245	3.1	176-6	197	183	6	142	639	8.2

5

ASHLEE HARRIS

GUARD • GRADUATE STUDENT • 5-6

LOUISVILLE, KY | SACRED HEART ACADEMY



2024-25 – REDSHIRT SENIOR

ASUN Honor Roll recipient...Led team in free throw percentage (.884) while ranking second in steals (51) and minutes per game (31:25), third in assists (2.3) and 3-point percentage (.353), fourth in 3-pointers made (30) and fifth in free throws made (61)...Appeared in all 33 games with 27 starts and averaged 8.0 points and 2.0 rebounds per game...At conclusion of ASUN Tournament, tied for fourth in conference in total steals...In ASUN play, averaged 8.1 points and 2.2 assists per game...Scored in double figures 14 times, with a season high of 17 points against Eastern Kentucky on Jan. 18.

2023-24 – REDSHIRT JUNIOR

After missing previous two seasons due to injury, returned to appear in 28 games with four starts and log 21.1 minutes per game...Tied for third on team in assists (1.7) while averaging 5.3 points and 1.5 rebounds...Upped scoring to 7.1 points per game in ASUN play...Shot 79.2 percent from the free-throw line and accumulated 23 steals...Scored in double figure on five occasions...Registered season-high 18 points against Eastern Kentucky on Jan. 13...Posted 16 points while going 2-for-2 from 3-point range and 6-for-6 at the free-throw line against Queens.

2022-23 – REDSHIRT JUNIOR

Missed season due to injury.

2021-22 – JUNIOR

Medical redshirt.

2020-21 – SOPHOMORE

ASUN Honor Roll recipient...Appeared in 18 games with three starts and logged 22.0 minutes per contest...Averaged 5.2 points and 1.6 rebounds and collected 17 steals and five blocks...Hit 77.3 percent of her free throws and 36.8 percent of her 3-point tries.

2019-20 – FRESHMAN

As a freshman, appeared in all 29 games and averaged 14.7 minutes...Shot 86.7 percent (13 of 15) from the free-throw line...Averaged 3.6 points and 1.0 rebounds and had 11 steals.

2025-26 GAME-BY-GAME STATS

Opponent	Date	GS	MIN	Total		3-Pointers		Free throws		Rebounds				PF	A	TO	BLK	STL	PTS	AVG	
				FG-GA	PCT	3FG-3GA	PCT	FT-FTA	PCT	OFF	DEF	TOT	AVG								
Spalding	11/03/2025	*	25:59	4-6	.667	2-4	.500	0-0	.000	1	5	6	6.0	0	5	1	1	3	10	10.0	
Morehead St.	11/07/2025	*	32:58	2-9	.222	0-4	.000	0-0	.000	0	1	1	3.5	3	4	4	0	1	4	7.0	
at Ohio St.	11/13/2025	*	30:16	1-7	.143	0-2	.000	0-0	.000	0	0	0	2.3	1	3	1	0	1	2	5.3	
Miami (OH)	11/16/2025	*	32:34	2-7	.286	1-3	.333	0-0	.000	0	1	1	2.0	3	2	1	0	1	5	5.3	
at Wright St.	11/19/2025	*	41:09	9-12	.750	2-2	1.000	1-1	1.000	1	2	3	2.2	1	5	1	1	0	21	8.4	
at Bradley	11/23/2025	*	37:16	4-12	.333	1-5	.200	1-2	.500	0	0	0	1.8	1	1	2	0	1	10	8.7	
vs ETSU	11/28/2025	*	34:60	0-8	.000	0-3	.000	2-2	1.000	0	0	0	1.6	2	5	2	0	0	2	7.7	
Eastern Ill.	11/29/2025	*	11:07	1-2	.500	0-0	.000	2-2	1.000	0	0	0	1.4	0	0	0	0	0	4	7.3	
Totals			8	246:18	23-63	.365	6-23	.261	6-7	.857	2	9	11	1.4	11	25	12	2	7	58	7.3

Player Averages

Games Played	Minutes/ game	Points/ game	FG Pct	3FG Pct	FT Pct	Rebounds/ game	Assists/ game	Turnovers/ game	Assist/Turnover ratio	Steals/ game	Blocks/ game
8	30.8	7.3	36.5	26.1	85.7	1.4	3.1	1.5	2.1	0.9	0.3

CAREER HIGHS

Statistic	Value
Points	21 at Wright St. 11/19/25
Rebounds	6 at Ohio 11/10/24, vs Spalding 11/03/25, at Morehead St. 12/08/24
Assists	6 vs Stetson 02/08/25, vs North Ala. 01/18/24
Steals	8 vs Jacksonville 02/01/25
Blocks	2 vs FGCU 01/16/21, at Missouri S&T 02/20/20, at Stetson 01/23/21
FG Made	9 at Wright St. 11/19/25
FG Attempts	14 at Eastern Ky. 01/18/25
3FG Made	3 at Eastern Ky. 01/18/25, vs Midway 11/06/24, vs Lipscomb 02/27/25
3FG Attempts	6 at Eastern Ky. 01/18/25, vs FGCU 02/06/25
FT Made	8 vs Austin Peay 01/11/25, at Queens (NC) 01/08/25
FT Attempts	9 at Queens (NC) 01/08/25

CAREER STATS

SEASON	TEAM	GP-GS	MIN/AVG	Field Goals		3-Point		F-Throws		Rebounds				Scoring						
				FG-FGA	FG%	3FG-3FGA	3FG%	FT-FTA	FT%	OFF	DEF	TOT	AVG	PF-FO	A	TO	BLK	STL	PTS	AVG
2019-20	BU	29-0	428/14.8	41-111	.369	8-25	.320	13-15	.867	8	22	30	1.0	34-0	27	26	7	11	103	3.6
2020-21	BU	18-3	394/21.9	35-104	.337	7-19	.368	17-22	.773	10	18	28	1.6	23-0	22	22	5	17	94	5.2
2023-24	BU	28-4	590/21.1	57-135	.422	14-42	.333	19-24	.792	14	28	42	1.5	49-0	48	38	3	23	147	5.3
2024-25	BU	33-27	1037/31.4	87-225	.387	30-85	.353	61-69	.884	12	54	66	2.0	67-0	76	64	2	51	265	8.0
2025-26	BU	8-8	246/30.8	23-63	.365	6-23	.261	6-7	.857	2	9	11	1.4	11-0	25	12	2	7	58	7.3
TOTAL		116-42	2695/23.2	243-638	.381	65-194	.335	116-137	.847	46	131	177	1.5	184-0	198	162	19	109	667	5.8

7

ROSE JAMISON

GUARD/FORWARD • REDSHIRT JUNIOR • 6-0

FAIRFIELD, CA | RODRIGUEZ HS | NAPA VALLEY COLLEGE



2024-25 – REDSHIRT SOPHOMORE (NAPA VALLEY COLLEGE)

Became Napa Valley College's all-time leading scorer after amassing 1,112 points in slightly over two seasons...Earned California Community College Athletic Association first-team All-Bay Valley Conference honors, third-team CCCAA All-State accolades and CCCAA Academic All-State laurels...Averaged 22.0 points, 11.3 rebounds, 4.5 assists, 2.6 steals and 2.0 blocks per game...45-point outburst against Yuba on Feb. 20 set a new program record...Also had a 37-point game, two 36-point outings and a 32-point performance...In total in 2024-25, broke 20 points on 18 occasions and cracked double digits in the rebounding column 18 times...Distributed five assists or more in a dozen games...Helped power Storm to a 13-3 record in the Bay Valley Conference.

2023-24 – SOPHOMORE (NAPA VALLEY COLLEGE)

Limited to three games due to injury.

2022-23 – FRESHMAN (NAPA VALLEY COLLEGE)

In first year with the Storm, averaged 15.8 points, 8.9 rebounds and 2.1 assists per game...Piled up season-high 31 points against Merritt on Feb. 15...In consecutive games against Chaffey, Diablo Valley and Siskiyou, poured in 26, 26 and 27 points...Overall, scored in double figures in 23 games while breaking 20 points on seven occasions...Grabbed 10 rebounds or more in 13 games, including a pair of 17-rebound efforts.

2025-26 GAME-BY-GAME STATS

Opponent	Date	GS	MIN	Total		3-Pointers		Free throws		Rebounds				PF	A	TO	BLK	STL	PTS	AVG
				FG-FGA	PCT	3FG-3FGA	PCT	FT-FTA	PCT	OFF	DEF	TOT	AVG							
Spalding	11/03/2025	*	10:42	1-3	.333	0-0	.000	0-0	.000	1	3	4	4.0	2	0	1	0	1	2	2.0
Morehead St.	11/07/2025	*	22:38	3-12	.250	2-6	.333	4-5	.800	1	1	2	3.0	1	0	2	1	0	12	7.0
at Ohio St.	11/13/2025	*	24:15	1-10	.100	0-4	.000	0-0	.000	0	5	5	3.7	2	0	5	1	0	2	5.3
Miami (OH)	11/16/2025	*	21:19	4-6	.667	1-3	.333	1-1	1.000	1	0	1	3.0	5	0	2	0	1	10	6.5
at Wright St.	11/19/2025	*	33:35	4-8	.500	2-4	.500	0-0	.000	1	5	6	3.6	2	0	0	0	0	10	7.2
at Bradley	11/23/2025	*	30:57	2-4	.500	1-2	.500	2-2	1.000	1	4	5	3.8	2	2	1	0	0	7	7.2
vs ETSU	11/28/2025	*	30:45	3-9	.333	2-4	.500	1-2	.500	4	7	11	4.9	1	2	3	0	2	9	7.4
Eastern Ill.	11/29/2025	*	31:47	3-6	.500	1-4	.250	2-2	1.000	3	5	8	5.3	2	1	3	0	1	9	7.6
at Louisville	11/30/2025	*	27:04	2-11	.182	0-6	.000	0-0	.000	0	4	4	5.1	4	0	0	0	0	4	7.2
at Illinois	12/02/2025	*	32:57	2-13	.154	1-6	.167	2-3	.667	2	0	2	4.8	2	1	1	0	0	7	7.2
at Chattanooga	12/07/2025	*	31:07	3-7	.429	1-2	.500	4-4	1.000	1	0	1	4.5	2	2	2	0	0	11	7.5
at Arizona	12/18/2025		35:50	6-17	.353	3-11	.273	5-7	.714	1	6	7	4.7	3	4	7	1	1	20	8.6
Totals			11 332:55	34-106	.321	14-52	.269	21-26	.808	16	40	56	4.7	28	12	27	3	6	103	8.6

CAREER HIGHS

Statistic	Value
Points	20 at Arizona 12/18/25
Rebounds	11 vs ETSU 11/28/25
Assists	4 at Arizona 12/18/25
Steals	2 vs ETSU 11/28/25
Blocks	1 at Ohio St. 11/13/25, vs Morehead St. 11/07/25, at Arizona 12/18/25
FG Made	6 at Arizona 12/18/25
FG Attempts	17 at Arizona 12/18/25
3FG Made	3 at Arizona 12/18/25
3FG Attempts	11 at Arizona 12/18/25
FT Made	5 at Arizona 12/18/25
FT Attempts	7 at Arizona 12/18/25

Player Averages

Games Played	Minutes/game	Points/game	FG Pct	3FG Pct	FT Pct	Rebounds/game	Assists/game	Turnovers/game	Assist/Turnover ratio	Steals/game	Blocks/game
12	27.7	8.6	32.1	26.9	80.8	4.7	1.0	2.3	0.4	0.5	0.3

CAREER STATS

				Field Goals		3-Point		F-Throws		Rebounds									Scoring	
SEASON	TEAM	GP-GS	MIN/AVG	FG-FGA	FG%	3FG-3FGA	3FG%	FT-FTA	FT%	OFF	DEF	TOT	AVG	PF-FO	A	TO	BLK	STL	PTS	AVG
2025-26	BU	12-11	333/27.7	34-106	.321	14-52	.269	21-26	.808	16	40	56	4.7	28-1	12	27	3	6	103	8.6
TOTAL		12-11	333/27.7	34-106	.321	14-52	.269	21-26	.808	16	40	56	4.7	28-1	12	27	3	6	103	8.6

11

ANNA RODGERS

GUARD/FORWARD • SOPHOMORE • 5-11

MT. WASHINGTON, KY | BULLITT EAST HS



2024-25 – FRESHMAN

As a freshman, appeared in 19 games while logging 7.6 minutes per game...Amassed 13 points, 15 rebounds, three assists and two steals while hitting three of her four attempts from the free throw line...Hit a 3-pointer while scoring season-high four points against North Florida on Jan. 30...Grabbed season-high three rebounds against FGCU on Jan. 23...Blocked a shot and had two rebounds against Indiana on Dec. 15.

HIGH SCHOOL

Played high school basketball at Bullitt East in Kentucky...Joined program's 1,000-point club and was a three-time All-District and All-Region selection...Recognized as a four-time Bullitt County Player of the Year, an award sponsored by Schmid Funeral Home and the Pioneer News...Helped lead Bullitt East to back-to-back appearances in the KHSAA Sweet 16 as a freshman and sophomore, with the Chargers finishing as the state runner-up in the latter...Team posted records of 22-3 and 33-5 those two years...Overall, helped push Chargers to three district championships and two regional titles while program amassed 97 wins in her tenure and won at least 20 games all four of her years...Named to Honor Roll...Played club ball for Indiana Flight.

2025-26 GAME-BY-GAME STATS

CAREER HIGHS

Statistic	Value
Points	4 vs North Florida 01/30/25
Rebounds	3 at FGCU 01/23/25
Assists	1 vs North Florida 01/30/25, at Eastern Ky. 01/18/25, vs Midway 11/06/24
Steals	1 at Lipscomb 02/13/25, at Eastern Ky. 01/18/25
Blocks	1 at Indiana 12/15/24
FG Made	1 4 times
FG Attempts	2 5 times
3FG Made	1 vs North Florida 01/30/25, vs Central Ark. 01/04/25
3FG Attempts	2 vs North Florida 01/30/25
FT Made	2 vs Ind.-Southeast 11/04/24
FT Attempts	2 vs North Florida 01/30/25, vs Ind.-Southeast 11/04/24

CAREER STATS

				Field Goals		3-Point		F-Throws		Rebounds										Scoring	
SEASON	TEAM	GP-GS	MIN/AVG	FG-FGA	FG%	3FG-3FGA	3FG%	FT-FTA	FT%	OFF	DEF	TOT	AVG	PF-FO	A	TO	BLK	STL	PTS	AVG	
2024-25	BU	19-0	146/7.7	4-17	.235	2-7	.286	3-4	.750	4	11	15	0.8	20-0	3	6	1	2	13	0.7	
TOTAL		19-0	146/7.7	4-17	.235	2-7	.286	3-4	.750	4	11	15	0.8	20-0	3	6	1	2	13	0.7	

12

KAYCE HYMAN

FORWARD • SOPHOMORE • 5-10

IRMO, SC | HAMMOND SCHOOL

2024-25 – FRESHMAN

ASUN Honor Roll recipient...As a freshman, appeared in 30 games while logging 8.1 minutes per game...Averaged 2.2 points and 1.6 rebounds while shooting 78.1 percent (25-for-32) from the free throw line...Registered season highs of 13 points and five rebounds against Ohio on Nov. 10 while sinking all seven of her free throw attempts...Notched a season-high two steals against Morehead State on Dec. 8 and a season-best two assists against Saint Louis on Dec. 21.

HIGH SCHOOL

Played high school basketball in South Carolina, competing first two years at Dutch Fork and last two at Hammond School...Was two-time All-Region and two-time SCISA All-Star while being named co-MVP of a Capital City Classic Game...Scored a season-high 27 points...Played club ball for the Palmetto 76ers...Competed in track and field as a junior and senior, becoming a two-time state qualifier in the high jump while qualifying for state once in the long jump and 4x400 relay...Member of National Honor Society and Fellowship of Christian Athletes.



2025-26 GAME-BY-GAME STATS

Opponent	Date	GS	MIN	Total		3-Pointers		Free throws		Rebounds				PF	A	TO	BLK	STL	PTS	AVG
				FG-FGA	PCT	3FG-3FGA	PCT	FT-FTA	PCT	OFF	DEF	TOT	AVG							
Spalding	11/03/2025	*	18:47	3-9	.333	0-2	.000	4-4	1.000	1	1	2	2.0	5	0	3	0	1	10	10.0
Morehead St.	11/07/2025		21:07	1-5	.200	1-2	.500	0-0	.000	2	1	3	2.5	1	1	3	0	0	3	6.5
at Ohio St.	11/13/2025	*	29:53	3-13	.231	1-1	1.000	1-2	.500	2	0	2	2.3	2	0	3	0	1	8	7.0
Miami (OH)	11/16/2025	*	29:20	2-6	.333	0-1	.000	3-4	.750	1	1	2	2.3	1	0	5	0	2	7	7.0
at Wright St.	11/19/2025		21:50	2-4	.500	0-0	.000	0-0	.000	0	3	3	2.4	3	0	2	0	0	4	6.4
at Bradley	11/23/2025		28:18	2-6	.333	0-3	.000	0-0	.000	1	4	5	2.8	3	0	5	0	2	4	6.0
vs ETSU	11/28/2025		16:28	1-2	.500	0-0	.000	0-0	.000	1	4	5	3.1	2	1	0	0	0	2	5.4
Eastern Ill.	11/29/2025		27:15	2-8	.250	0-0	.000	0-0	.000	1	2	3	3.1	5	0	1	0	0	4	5.3
at Louisville	11/30/2025		31:38	2-12	.167	0-3	.000	4-4	1.000	4	2	6	3.4	3	1	4	0	1	8	5.6
at Illinois	12/02/2025	*	30:02	2-7	.286	1-2	.500	4-4	1.000	1	0	1	3.2	4	0	4	0	0	9	5.9
at Chattanooga	12/07/2025		24:25	4-8	.500	1-2	.500	1-2	.500	1	0	1	3.0	2	1	1	0	0	10	6.3
at Arizona	12/18/2025	*	31:04	0-8	.000	0-3	.000	0-0	.000	2	0	2	2.9	4	2	3	0	0	0	5.8
Totals			5 310:07	24-88	.273	4-19	.211	17-20	.850	17	18	35	2.9	35	6	34	0	7	69	5.8

Player Averages

Games Played	Minutes/game	Points/game	FG Pct	3FG Pct	FT Pct	Rebounds/game	Assists/game	Turnovers/game	Assist/Turnover ratio	Steals/game	Blocks/game
12	25.8	5.8	27.3	21.1	85.0	2.9	0.5	2.8	0.2	0.6	0.0

CAREER HIGHS

Statistic	Value
Points	13 at Ohio 11/10/24
Rebounds	6 at Louisville 11/30/25
Assists	2 at Saint Louis 12/21/24, at Arizona 12/18/25
Steals	2 at Morehead St. 12/08/24, vs Miami (OH) 11/16/25, at Bradley 11/23/25
FG Made	4 at Saint Louis 12/21/24, at Chattanooga 12/07/25
FG Attempts	13 at Ohio St. 11/13/25
3FG Made	1 4 times
3FG Attempts	3 at Bradley 11/23/25, at Louisville 11/30/25, at Arizona 12/18/25
FT Made	7 at Ohio 11/10/24
FT Attempts	7 at Ohio 11/10/24

CAREER STATS

				Field Goals		3-Point		F-Throws		Rebounds								Scoring		
SEASON	TEAM	GP-GS	MIN/AVG	FG-FGA	FG%	3FG-3FGA	3FG%	FT-FTA	FT%	OFF	DEF	TOT	AVG	PF-FO	A	TO	BLK	STL	PTS	AVG
2024-25	BU	30-0	245/8.2	21-59	.356	0-1	.000	25-32	.781	20	29	49	1.6	32-0	3	23	0	4	67	2.2
2025-26	BU	12-5	310/25.8	24-88	.273	4-19	.211	17-20	.850	17	18	35	2.9	35-2	6	34	0	7	69	5.8
TOTAL		42-5	555/13.2	45-147	.306	4-20	.200	42-52	.808	37	47	84	2.0	67-2	9	57	0	11	136	3.2

13

HAYA ABDEL AAL

CENTER • FRESHMAN • 6-4

ALEXANDRIA, EGYPT | ALEXANDRIA HOUSE OF ENGLISH

INTERNATIONAL YOUTH CAREER

Played in 2024 with the Egyptian national team in the FIBA U18 women's African Championship and participated in the FIBA women's Basketball League Africa...Earned gold medals in U14, U16 and U18 Women's Alexandria League, U18 Women's Basketball Egyptian league and the Women's Egyptian Basketball Joint League...Was recognized as MVP in both U16 and U18 Women's Alexandria league as well as in the Joint League.



2025-26 GAME-BY-GAME STATS																			
Opponent	Date	GS	MIN	Total		3-Pointers		Free throws		Rebounds				Pf	A	TO	BLK	STL	PTS
				FG-FGA	PCT	3FG-3FGA	PCT	FT-FTA	PCT	OFF	DEF	TOT	AVG						AVG
Spalding	11/03/2025		20:45	6-11	.545	0-0	.000	0-2	.000	2	7	9	9.0	1	0	1	1	1	12.0
Morehead St.	11/07/2025	*	15:07	0-0	.000	0-0	.000	2-4	.500	0	3	3	6.0	1	0	2	1	0	7.0
at Ohio St.	11/13/2025		11:07	1-3	.333	0-0	.000	1-4	.250	1	1	2	4.7	3	0	2	0	0	5.7
Miami (OH)	11/16/2025		09:08	0-1	.000	0-0	.000	0-0	.000	0	2	2	4.0	2	0	1	0	0	4.3
at Wright St.	11/19/2025		02:33	0-0	.000	0-0	.000	1-2	.500	0	2	2	3.6	0	0	1	1	0	3.6
at Louisville	11/30/2025		14:51	1-2	.500	0-1	.000	0-0	.000	1	1	2	3.3	1	1	1	1	0	3.3
at Illinois	12/02/2025		12:04	1-2	.500	0-0	.000	0-0	.000	0	2	2	3.1	2	0	0	0	0	3.1
at Chattanooga	12/07/2025		10:30	1-3	.333	0-0	.000	1-2	.500	2	2	4	3.3	1	0	1	0	1	3.1
at Arizona	12/18/2025	*	27:25	3-8	.375	0-4	.000	2-4	.500	1	5	6	3.6	4	0	1	2	1	8.7
Totals		2	123:31	13-30	.433	0-5	.000	7-18	.389	7	25	32	3.6	15	1	10	6	3	3.7

Player Averages

Games Played	Minutes/game	Points/game	FG Pct	3FG Pct	FT Pct	Rebounds/game	Assists/game	Turnovers/game	Assist/Turnover ratio	Steals/game	Blocks/game
9	13.7	3.7	43.3	0.0	38.9	3.6	0.1	1.1	0.1	0.3	0.7

CAREER HIGHS		
Statistic	Value	
Points	12	vs Spalding 11/03/25
Rebounds	9	vs Spalding 11/03/25
Assists	1	at Louisville 11/30/25
Steals	1	vs Spalding 11/03/25, at Chattanooga 12/07/25, at Arizona 12/18/25
Blocks	2	at Arizona 12/18/25
FG Made	6	vs Spalding 11/03/25
FG Attempts	11	vs Spalding 11/03/25
3FG Attempts	4	at Arizona 12/18/25
FT Made	2	vs Morehead St. 11/07/25, at Arizona 12/18/25
FT Attempts	4	at Ohio St. 11/13/25, vs Morehead St. 11/07/25, at Arizona 12/18/25

CAREER STATS																			
				Field Goals		3-Point		F-Throws		Rebounds									
SEASON	TEAM	GP-GS	MIN/AVG	FG-FGA	FG%	3FG-3FGA	3FG%	FT-FTA	FT%	OFF	DEF	TOT	AVG	PF-FO	A	TO	BLK	STL	PTS
2025-26	BU	9-2	124/13.7	13-30	.433	0-5	.000	7-18	.389	7	25	32	3.6	15-0	1	10	6	3	33
TOTAL		9-2	124/13.7	13-30	.433	0-5	.000	7-18	.389	7	25	32	3.6	15-0	1	10	6	3	33
																			3.7

14

ANDREA CHIQUEMBA

FORWARD • REDSHIRT JUNIOR • 6-1

VILA NOVA DE GAIA, PORTUGAL | DETROIT MERCY/EASTERN FLORIDA STATE COLLEGE



2023-24 – SOPHOMORE (EASTERN FLORIDA STATE COLLEGE)

Appeared in 29 games with eight starts for the Titans...Averaged 5.3 points, 3.0 rebounds and 1.0 assists per game while shooting 56.7 percent from the floor and 73.1 percent from the free-throw line...Scored in double figures six times on the year...Canned 6-of-9 shots in posting a season-high 13 points against Daytona State College on Feb. 21 and followed with a 12-point effort against Miami Dade College and an 11-point performance against Hillsborough Community College where she sank 9-of-12 shots combined...Supplied a double-double in the Miami Dade game after also grabbing 10 rebounds and registered another double-double on the season with 12 points and 10 rebounds against Southern Crescent Technical College on Nov. 3.

2022-23 – FRESHMAN (DETROIT MERCY)

Was a Detroit Mercy Athletic Director Honor Roll selection...Appeared in 16 games...Tallied five points apiece against Green Bay and Youngstown State...Notched four points and a steal against Indiana State.

HIGH SCHOOL

Averaged 25 points, 12 rebounds against GDESSA in 2022...Averaged 10 points, 2 rebounds and 3 assists against Galitos at the 2022 Liga Feminina tournament...Averaged 18 points, 6 rebounds and 3 assists against SIMECQ in the 2022 playoffs...Played club basketball for SCCoimbrões, CBQue-luz and CAB Madeira...Helped SCCoimbrões win a District Championship and National third-place finish...Four-time All-Star selection...Helped CAB Madeira to Liga Femina playoffs...Played on the Portugal U16 National Team for the 2021 Women's European Challengers...Also helped lead the U18 Portugal National Team to a Division B Bronze Medal at the Women's European Championship.

2025-26 GAME-BY-GAME STATS

Opponent	Date	GS	MIN	Total		3-Pointers		Free throws		Rebounds				PF	A	TO	BLK	STL	PTS	AVG
				FG-FGA	PCT	3FG-3FGA	PCT	FT-FTA	PCT	OFF	DEF	TOT	AVG							
Spalding	11/03/2025		10:16	1-7	.143	0-1	.000	0-0	.000	3	0	3	3.0	1	0	1	0	0	2	2.0
Morehead St.	11/07/2025		03:13	1-3	.333	0-1	.000	1-1	1.000	1	0	1	2.0	0	1	0	0	0	3	2.5
at Ohio St.	11/13/2025		14:35	1-2	.500	0-0	.000	0-0	.000	1	0	1	1.7	0	0	0	0	0	2	2.3
Miami (OH)	11/16/2025		09:34	0-1	.000	0-0	.000	1-2	.500	1	0	1	1.5	0	0	1	0	0	1	2.0
at Wright St.	11/19/2025		23:26	4-7	.571	0-2	.000	0-0	.000	1	2	3	1.8	0	1	1	0	1	8	3.2
at Bradley	11/23/2025	*	25:53	0-1	.000	0-1	.000	1-2	.500	0	4	4	2.2	4	0	3	0	0	1	2.8
vs ETSU	11/28/2025	*	29:48	6-8	.750	5-5	1.000	0-0	.000	1	4	5	2.6	1	1	0	1	0	17	4.9
Eastern Ill.	11/29/2025	*	26:30	4-10	.400	2-6	.333	2-4	.500	1	2	3	2.6	2	0	1	0	1	12	5.8
at Louisville	11/30/2025	*	28:48	0-8	.000	0-6	.000	0-0	.000	0	1	1	2.4	3	0	0	0	0	0	5.1
at Illinois	12/02/2025	*	29:26	1-8	.125	1-4	.250	0-0	.000	0	2	2	2.4	1	1	1	0	0	3	4.9
at Chattanooga	12/07/2025	*	21:16	1-6	.167	1-2	.500	0-0	.000	1	2	3	2.5	5	0	1	0	0	3	4.7
at Arizona	12/18/2025	*	25:09	2-7	.286	2-5	.400	2-2	1.000	1	1	2	2.4	1	0	1	0	0	8	5.0
Totals		7	247:54	21-68	.309	11-33	.333	7-11	.636	11	18	29	2.4	18	4	10	1	2	60	5.0

Player Averages

Games Played	Minutes/ game	Points/ game	FG Pct	3FG Pct	FT Pct	Rebounds/ game	Assists/ game	Turnovers/ game	Assist/Turnover ratio	Steals/ game	Blocks/ game
12	20.7	5.0	30.9	33.3	63.6	2.4	0.3	0.8	0.4	0.2	0.1

CAREER HIGHS

Statistic	Value
Points	17 vs ETSU 11/28/25
Rebounds	5 vs ETSU 11/28/25
Assists	2 vs Cleveland St. 01/26/23
Steals	1 at Indiana St. 12/21/22, at Wright St. 11/19/25, vs Eastern Ill. 11/29/25
Blocks	1 vs ETSU 11/28/25
FG Made	6 vs ETSU 11/28/25
FG Attempts	10 vs Eastern Ill. 11/29/25
3FG Made	5 vs ETSU 11/28/25
3FG Attempts	6 vs Eastern Ill. 11/29/25, at Louisville 11/30/25
FT Made	2 vs Eastern Ill. 11/29/25, at Arizona 12/18/25
FT Attempts	4 vs Eastern Ill. 11/29/25

CAREER STATS

				Field Goals		3-Point		F-Throws		Rebounds				Scoring						
SEASON	TEAM	GP-GS	MIN/AVG	FG-FGA	FG%	3FG-3FGA	3FG%	FT-FTA	FT%	OFF	DEF	TOT	AVG	PF-FO	A	TO	BLK	STL	PTS	AVG
2022-23	UDM	16-0	112/7.0	9-24	.375	3-11	.273	2-4	.500	3	9	12	0.8	8-0	5	10	0	1	23	1.4
2025-26	BU	12-7	248/20.7	21-68	.309	11-33	.333	7-11	.636	11	18	29	2.4	18-1	4	10	1	2	60	5.0
TOTAL FOR BU		12-7	248/20.7	21-68	.309	11-33	.333	7-11	.636	11	18	29	2.4	18-1	4	10	1	2	60	5.0
TOTAL		28-7	360/12.8	30-92	.326	14-44	.318	9-15	.600	14	27	41	1.5	26-1	9	20	1	3	83	3.0

20

ERIN TOLLER

GUARD • GRADUATE STUDENT • 5-7

LOUISVILLE, KY | SACRED HEART ACADEMY | KENTUCKY/GEORGETOWN COLLEGE

2024-25 – JUNIOR

Named ASUN Newcomer of the Week on Nov. 11 and Dec. 16...Honored on College Sports Communicators' Academic All-District Team...ASUN Honor Roll recipient...In first season at Bellarmine, ranked third on team in 3-pointers made (33) and fifth in scoring (8.9) and free throw attempts (70)...Appeared in 30 games with four starts and logged 18.8 minutes per game...Averaged 2.3 rebounds and 1.1 assists per game while tallying 28 steals...In ASUN play, averaged 7.7 points and 1.9 rebounds per game...Scored in double figures 13 times...Buried consecutive 3-pointers inside 8.3 seconds left, the last of which was a buzzer-beater sending team to improbable 67-66 win over Chattanooga on Dec. 12...In that Chattanooga game, tied season high with 19 points, a tally matched against Jacksonville on Feb. 1...Nailed four 3-pointers apiece against Ohio on Nov. 10 and Wright State on Nov. 21.

2023-24 – REDSHIRT SOPHOMORE (GEORGETOWN COLLEGE)

Recognized as third-team NAIA All-American...Named first-team Mid-South Conference All-Conference... Averaged 13.1 points, 2.5 rebounds and 2.0 assists...Knocked down 79 3-pointers on 39.1-percent 3-point shooting...Led team to 25-7 record and second round of NAIA Tournament.

2022-23 – REDSHIRT FRESHMAN (GEORGETOWN COLLEGE)

Named first-team Mid-South Conference All-Conference...Averaged 15.7 points, 3.3 rebounds and 1.4 assists...Sank 68 3-pointers...Led team to second round of NAIA Tournament.

2020-21 – FRESHMAN (KENTUCKY)

Appeared in five games as a freshman at Kentucky...Went 4-for-9 from the field while totaling 11 points...
Tallied three steals and two rebounds.



2025-26 GAME-BY-GAME STATS

CAREER HIGHS

Statistic	Value
Points	19 vs Jacksonville 02/01/25, vs Chattanooga 12/12/24
Rebounds	6 vs Ind.-Southeast 11/04/24
Assists	3 6 times
Steals	3 vs Murray St. 11/25/20, at Saint Louis 12/21/24, vs North Ala. 01/02/25
Blocks	1 5 times
FG Made	7 vs Midway 11/06/24
FG Attempts	17 vs Jacksonville 02/01/25
3FG Made	4 at Ohio 11/10/24, vs Wright St. 11/21/24
3FG Attempts	9 vs Jacksonville 02/01/25, at Purdue 11/18/24, vs North Ala. 01/02/25
FT Made	8 vs Jacksonville 02/01/25
FT Attempts	9 vs Chattanooga 12/12/24

CAREER STATS

				Field Goals		3-Point		F-Throws		Rebounds									Scoring	
SEASON	TEAM	GP-GS	MIN/AVG	FG-FGA	FG%	3FG-3FGA	3FG%	FT-FTA	FT%	OFF	DEF	TOT	AVG	PF-FO	A	TO	BLK	STL	PTS	AVG
2020-21	UK	5-0	25/4.9	4-9	.444	1-5	.200	2-4	.500	0	2	2	0.4	5-0	0	8	0	3	11	2.2
2024-25	BU	30-4	570/19.0	93-285	.326	33-136	.243	47-70	.671	17	52	69	2.3	77-1	34	47	5	28	266	8.9
TOTAL FOR BU		30-4	570/19.0	93-285	.326	33-136	.243	47-70	.671	17	52	69	2.3	77-1	34	47	5	28	266	8.9
TOTAL		35-4	595/17.0	97-294	.330	34-141	.241	49-74	.662	17	54	71	2.0	82-1	34	55	5	31	277	7.9

34

PATRICIA SHERRILL

CENTER • GRADUATE STUDENT • 6-1

ALEXANDRIA, VA | HARFORD CC/CHOWAN/NEW ORLEANS/LONG ISLAND

2024-25 — SENIOR (LONG ISLAND UNIVERSITY)

Made the NEC Winter Academic Honor Roll...Averaged 1.9 points and 2.6 rebounds in 10.5 minutes of action per game over 29 contests...Hauled in season-high nine rebounds against Wagner on Feb. 6.

2023-24 — JUNIOR (UNIVERSITY OF NEW ORLEANS)

Appeared in 16 games and averaged 6.1 minutes per contest...Notched six rebounds in a season-high 15 minutes against Alcorn State on Nov. 21.

2022-23 — SOPHOMORE (CHOWAN UNIVERSITY)

DNP

2021-22 — FRESHMAN (HARFORD COMMUNITY COLLEGE)

Recognized as an NJCAA honorable-mention All-American...Averaged 9.8 points and 11.8 rebounds, the latter ranking in the top 15 in the nation...Piled up 21 rebounds against Central Penn.



2025-26 GAME-BY-GAME STATS																								
Opponent	Date	GS	MIN	Total		3-Pointers		Free throws		Rebounds				PF	A	TO	BLK	STL	PTS	AVG				
FG-FGA	PCT	3FG-3FGA	PCT	FT-FTA	PCT	OFF	DEF	TOT	AVG															
Spalding	11/03/2025		09:28	1-6	.167	0-0	.000	3-4	.750	3	1	4	4.0	4	1	2	0	0	5	5.0				
Morehead St.	11/07/2025		08:06	0-1	.000	0-0	.000	1-2	.500	0	0	0	2.0	2	0	1	0	0	1	3.0				
at Ohio St.	11/13/2025		14:30	0-3	.000	0-0	.000	2-6	.333	4	5	9	4.3	5	0	1	0	1	2	2.7				
Miami (OH)	11/16/2025	*	17:05	1-1	1.000	0-0	.000	1-2	.500	0	1	1	3.5	0	0	1	0	1	3	2.8				
at Wright St.	11/19/2025	*	06:59	1-3	.333	0-0	.000	0-0	.000	0	0	0	2.8	5	1	0	0	0	2	2.6				
at Bradley	11/23/2025		12:27	1-4	.250	0-0	.000	0-0	.000	3	0	3	2.8	5	2	3	0	0	2	2.5				
vs ETSU	11/28/2025		04:20	0-1	.000	0-0	.000	0-0	.000	0	0	0	2.4	0	0	2	0	0	0	2.1				
Eastern Ill.	11/29/2025		12:27	0-0	.000	0-0	.000	0-0	.000	0	3	3	2.5	4	0	0	1	1	0	1.9				
at Louisville	11/30/2025		16:26	2-6	.333	0-0	.000	0-0	.000	3	1	4	2.7	4	0	0	0	1	4	2.1				
at Illinois	12/02/2025		16:18	0-1	.000	0-1	.000	1-2	.500	1	3	4	2.8	4	0	4	0	0	1	2.0				
at Chattanooga	12/07/2025		11:15	0-1	.000	0-0	.000	0-0	.000	1	3	4	2.9	4	1	2	0	1	0	1.8				
at Arizona	12/18/2025		10:08	0-2	.000	0-0	.000	0-0	.000	0	3	3	2.9	5	0	1	0	0	0	1.7				
Totals		2	139:29	6-29	.207	0-1	.000	8-16	.500	15	20	35	2.9	42	5	17	1	5	20	1.7				

Player Averages

Games Played	Minutes/game	Points/game	FG Pct	3FG Pct	FT Pct	Rebounds/game	Assists/game	Turnovers/game	Assist/Turnover ratio	Steals/game	Blocks/game
12	11.6	1.7	20.7	0.0	50.0	2.9	0.4	1.4	0.3	0.4	0.1

CAREER HIGHS	
Statistic	Value
Points	6 at Manhattan 11/14/24, at Saint Francis 01/18/25
Rebounds	9 vs Wagner 02/06/25, at Ohio St. 11/13/25
Assists	2 vs Stonehill 01/11/25, at Bradley 11/23/25
Steals	2 at Northwestern St. 02/08/24
Blocks	1 6 times
FG Made	3 at Manhattan 11/14/24, at Saint Francis 01/18/25
FG Attempts	9 at Manhattan 11/14/24
3FG Attempts	1 at VCU 12/21/24, at Illinois 12/02/25
FT Made	3 vs Spalding 11/03/25
FT Attempts	6 at Ohio St. 11/13/25

CAREER STATS																								
				Field Goals		3-Point		F-Throws		Rebounds				Scoring										
SEASON	TEAM	GP-GS	MIN/AVG	FG-FGA	FG%	3FG-3FGA	3FG%	FT-FTA	FT%	OFF	DEF	TOT	AVG	PF-FO	A	TO	BLK	STL	PTS	AVG				
2023-24	UNO	16-0	96/6.0	7-19	.368	0-0	.000	0-0	.000	8	14	22	1.4	16-0	3	8	1	3	14	0.9				
2024-25	LIU	29-1	310/10.7	23-65	.354	0-1	.000	9-22	.409	38	38	76	2.6	66-2	7	29	4	4	55	1.9				
2025-26	BU	12-2	139/11.6	6-29	.207	0-1	.000	8-16	.500	15	20	35	2.9	42-4	5	17	1	5	20	1.7				
TOTAL FOR BU		12-2	139/11.6	6-29	.207	0-1	.000	8-16	.500	15	20	35	2.9	42-4	5	17	1	5	20	1.7				
TOTAL		57-3	546/9.6	36-113	.319	0-2	.000	17-38	.447	61	72	133	2.3	124-6	15	54	6	12	89	1.6				

35

HANA ABDEL AAL

CENTER • SOPHOMORE • 6-2

ALEXANDRIA, EGYPT | ALEXANDRIA HOUSE OF ENGLISH

2024-25 – FRESHMAN

Named ASUN Freshman of the Week on Nov. 25...ASUN Honor Roll recipient...As a freshman, appeared in team's first nine games and logged 12.3 minutes per game before suffering season-ending injury...Averaged 5.1 points and 4.0 rebounds per game while amassing 13 blocks, which tied for second on the team despite her missing the majority of the year...Registered season highs in rebounds with 10 and blocks with five (also the team's individual season high) against Midway on Nov. 6...Tied season high in scoring in back-to-back games after notching 11 points against Purdue on Nov. 18 and Wright State on Nov. 21...Also blocked three shots against Purdue and racked up four more against Akron on Nov. 24.

INTERNATIONAL YOUTH CAREER

In 2023, earned a gold medal playing in the U18 Women's Basketball Egyptian League, was on a squad that placed sixth at the FIBA 3x3 U18 World Cup and another that took 12th at the FIBA U19 Women's Basketball World Cup...In 2022, secured gold medals at the FIBA 3x3 u17 Africa Cup, FIBA Africa Champions Cup Women, Women's Basketball Egyptian League and Women's Basketball Egyptian Cup...Her squad placed 11th at the FIBA U17 Women's Basketball World Cup...Selected to the NBA Basketball Without Borders Africa All-Star Team...Earned silver medals in 2021 in both the U16 Women's Basketball Egyptian League and the FIBA U16 Women's African Championship, the latter in which she was honored with the "Best Center in the Tournament" award...Played with Bellarmine head coach Monique Reid for Alexandria Sporting Club in Egypt when Reid was a pro player.



2025-26 GAME-BY-GAME STATS

CAREER HIGHS

Statistic	Value
Points	11 at Purdue 11/18/24, vs Wright St. 11/21/24
Rebounds	10 vs Midway 11/06/24
Assists	2 vs Wright St. 11/21/24
Shells	1 6 times
Blocks	5 vs Midway 11/06/24
FG Made	5 at Purdue 11/18/24, vs Wright St. 11/21/24
FG Attempts	11 vs Wright St. 11/21/24
3FG Made	1 vs Wright St. 11/21/24
3FG Attempts	3 vs Wright St. 11/21/24
FT Made	1 at Purdue 11/18/24, vs Jackson St. 11/29/24, vs Midway 11/06/24
FT Attempts	2 4 times

CAREER STATS

				Field Goals		3-Point		F-Throws		Rebounds									Scoring	
SEASON	TEAM	GP-GS	MIN/AVG	FG-FGA	FG%	3FG-3FGA	3FG%	FT-FTA	FT%	OFF	DEF	TOT	AVG	PF-FO	A	TO	BLK	STL	PTS	AVG
2024-25	BU	9-0	112/12.4	21-52	.404	1-4	.250	3-8	.375	12	24	36	4.0	17-0	3	16	13	6	46	5.1
TOTAL		9-0	112/12.4	21-52	.404	1-4	.250	3-8	.375	12	24	36	4.0	17-0	3	16	13	6	46	5.1

55

KENDALL WINGLER

GUARD • GRADUATE STUDENT • 5-9

EKRON, KY | MEADE COUNTY HS | EASTERN KENTUCKY/BUTLER/IU INDY

2024-25 - FIFTH-YEAR SENIOR (IU INDY)

Played in seven games before a season-ending injury...Averaged 4.4 points and 1.6 rebounds in 22.9 minutes per game...Recorded a season-high nine points with one assist against Ball State (Nov. 8)...Named to the IU Indy Fall and Spring Academic Advisor's Lists.

2023-24 - SENIOR (BUTLER)

Appeared in 27 games...Averaged 2.5 points and 1.0 rebounds per game...Averaged 12.4 minutes of playing time per game...87.5 percent free throw shooter (14-16)...Logged 322 minutes of total playing time...Led Butler in scoring with a season-high 18 points vs. Detroit (11/12).

2022-23 - JUNIOR (BUTLER)

Appeared in 24 games, making two starts...Averaged 3.7 points and 1.3 rebounds per game...Logged 284 minutes of playing time averaging 11 minutes per contest...Connected on 19 of her 25 free throw attempts (76 percent)...Scored a career-high 23 points at Georgetown (1/11)...Came off the bench to make seven of her 11 field goal attempts, including four makes from behind the arc...Scored 16 points in her first start of the season at Villanova (1/8).

2021-22 - SOPHOMORE (BUTLER)

Appeared in 26 games, making 11 starts...Averaged 5.4 points and 2.3 rebounds per game...Knocked down 38 3-pointers...88 percent free throw shooter...Logged 664 minutes of playing time, averaging 25.6 minutes of playing time per game...Led BU in scoring vs. Ball State with a season-high 17 points to go along with five rebounds, two assists and a steal (11/16).

2020-21 - FRESHMAN (EASTERN KENTUCKY)

Averaged 10.9 points and 4.1 rebounds per game...Played in all 24 games, starting in 22 contests...Led team in playing time (780 total minutes, 32.5 per game)...Shot 35.2 percent from the field (86-244) and 32.8 percent from 3-point range (42-128)...82.8% free throw shooter (48-58)...Scored a season-high 22 points vs. Tennessee Tech.



2025-26 GAME-BY-GAME STATS

Opponent	Date	GS	MIN	Total		3-Pointers		Free throws		Rebounds				PF	A	TO	BLK	STL	PTS	AVG
				FG-FGA	PCT	3FG-3FGA	PCT	FT-FTA	PCT	OFF	DEF	TOT	AVG							
Spalding	11/03/2025	*	32:15	3-7	.429	2-6	.333	1-1	1.000	0	4	4	4.0	0	6	0	0	1	9	9.0
Morehead St.	11/07/2025	*	29:20	2-4	.500	0-1	.000	0-0	.000	0	5	5	4.5	2	0	3	0	0	4	6.5
Totals		2	61:35	5-11	.455	2-7	.286	1-1	1.000	0	9	9	4.5	2	6	3	0	1	13	6.5

Player Averages

Games Played	Minutes/game	Points/game	FG Pct	3FG Pct	FT Pct	Rebounds/game	Assists/game	Turnovers/game	Assist/Turnover ratio	Steals/game	Blocks/game
2	30.8	6.5	45.5	28.6	100.0	4.5	3.0	1.5	2.0	0.5	0.0

CAREER HIGHS

Statistic	Value	
Points	23	at Georgetown 01/11/23
Rebounds	8	vs Morehead St. 12/14/20
Assists	6	vs Spalding 11/03/25
Steals	4	at SIUE 01/14/21
Blocks	1	4 times
FG Made	7	4 times
FG Attempts	22	vs Tennessee Tech 01/09/21
3FG Made	6	at Tennessee St. 02/13/21
3FG Attempts	12	at Tennessee St. 02/13/21
FT Made	8	vs Austin Peay 02/22/21
FT Attempts	10	vs Austin Peay 02/22/21

CAREER STATS

				Field Goals		3-Point		F-Throws		Rebounds				Scoring						
SEASON	TEAM	GP-GS	MIN/AVG	FG-FGA	FG%	3FG-3FGA	3FG%	FT-FTA	FT%	OFF	DEF	TOT	AVG	PF-FO	A	TO	BLK	STL	PTS	AVG
2020-21	EKU	24-22	781/32.5	86-244	.352	42-128	.328	48-58	.828	11	87	98	4.1	24-0	51	37	3	26	262	10.9
2021-22	Butler	26-11	664/25.6	47-164	.287	38-120	.317	8-9	.889	3	58	61	2.3	16-0	30	45	1	21	140	5.4
2022-23	Butler	24-2	284/11.8	27-75	.360	15-51	.294	19-25	.760	2	30	32	1.3	4-0	8	14	0	9	88	3.7
2023-24	Butler	26-0	323/12.4	21-72	.292	10-47	.213	14-16	.875	3	22	25	1.0	9-0	18	22	0	12	66	2.5
2024-25	IUIndy	7-2	158/22.6	9-26	.346	3-16	.188	10-12	.833	1	10	11	1.6	5-0	4	7	0	3	31	4.4
2025-26	BU	2-2	62/30.8	5-11	.455	2-7	.286	1-1	1.000	0	9	9	4.5	2-0	6	3	0	1	13	6.5
TOTAL FOR BU		2-2	62/30.8	5-11	.455	2-7	.286	1-1	1.000	0	9	9	4.5	2-0	6	3	0	1	13	6.5
TOTAL		109-39	2272/20.8	195-592	.329	110-369	.298	100-121	.826	20	216	236	2.2	60-0	117	128	4	72	600	5.5

OPPONENT OVERALL STATS



2025-26 Notre Dame Women's Basketball Combined Team Statistics All games

Page 1/1
as of Dec 14, 2025

Game Records

Record	Overall	Home	Away	Neutral
ALL GAMES	8-2	6-0	2-1	0-1
CONFERENCE	1-0	0-0	1-0	0-0
NON-CONFERENCE	7-2	6-0	1-1	0-1

Score by Periods

Team	1st	2nd	3rd	4th	OT	TOT
Notre Dame	228	190	214	195	0	827
Opponents	130	160	148	173	0	611

Team Box Score

No.	Player				Total		3-Point		F-Throw		Rebounds											
		GP-GS	MIN	AVG	FG-FGA	FG%	3FG-3FGA	3FG%	FT-FTA	FT%	OFF	DEF	TOT	AVG	PF	DQ	A	TO	BLK	STL	PTS	AVG
3	HIDALGO, Hannah	10-10	337:57	33.8	90-194	.464	11-55	.200	55-63	.873	17	48	65	6.5	25	1	46	30	3	54	246	24.6
8	PROSPER, Cassandre	10-10	312:45	31.3	63-109	.578	5-15	.333	27-34	.794	22	36	58	5.8	21	0	17	23	12	20	158	15.8
2	DE JESUS, Vanessa	10-10	330:36	33.1	32-93	.344	17-51	.333	20-22	.909	4	17	21	2.1	21	1	41	15	1	25	101	10.1
14	BRANSFORD, KK	9-9	280:47	31.2	35-70	.500	2-8	.250	15-24	.625	22	30	52	5.8	19	0	15	24	7	15	87	9.7
30	SANCHEZ, Gisela	10-10	263:11	26.3	36-65	.554	12-23	.522	4-4	1.000	9	39	48	4.8	19	0	13	10	5	6	88	8.8
5	COWLES, Malaya	8-1	178:35	22.3	28-50	.560	0-0	.000	6-9	.667	12	30	42	5.3	20	1	6	10	7	19	62	7.8
23	MOORE, Iyana	8-0	160:52	20.1	20-53	.377	14-32	.438	6-8	.750	2	20	22	2.8	15	0	6	12	0	13	60	7.5
1	RATIGAN, Kelly	8-0	80:08	10.0	4-10	.400	3-8	.375	4-6	.667	2	3	5	0.6	8	0	2	1	0	3	15	1.9
10	TEHRANI, Bella	4-0	12:43	3.2	1-2	.500	0-0	.000	1-1	1.000	1	1	2	0.5	1	0	0	1	0	0	3	0.8
15	JENSEN, Luci	5-0	15:53	3.2	1-4	.250	1-4	.250	0-0	.000	0	1	1	0.2	0	0	0	0	0	0	3	0.6
11	SMITH, Jordyn	8-0	26:34	3.3	2-4	.500	0-1	.000	0-1	.000	1	0	1	0.1	2	0	1	0	0	2	4	0.5
Team											20	23	43					4				
Total		10	2000		312-654	.477	65-197	.330	138-172	.802	112	248	360	36.0	151	3	147	130	35	157	827	82.7
Opponents		10	2000		230-570	.404	54-177	.305	97-144	.674	100	239	339	33.9	160	2	111	229	31	68	611	61.1

Team Statistics

	ND	OPP
Scoring	827	611
Points per game	82.7	61.1
Scoring margin	+21.6	-
Field goals-att	312-654	230-570
Field goal pct	.477	.404
3 point fg-att	65-197	54-177
3-point FG pct	.330	.305
3-pt FG made per game	6.5	5.4
Free throws-att	138-172	97-144
Free throw pct	.802	.674
F-Throws made per game	13.8	9.7
Rebounds	360	339
Rebounds per game	36.0	33.9
Rebounding margin	+2.1	-
Assists	147	111
Assists per game	14.7	11.1
Turnovers	130	229
Turnovers per game	13.0	22.9
Turnover margin	+9.9	-
Assist/turnover ratio	1.1	0.5
Steals	157	68
Steals per game	15.7	6.8
Blocks	35	31
Blocks per game	3.5	3.1
Winning streak	3	-
Home win streak	6	-
Attendance	41688	9665
Home games-Avg/Game	6-6948	3-3222
Neutral site-Avg/Game	-	1-2200

Team Results

Date	Opponent		Score	Att.
11/05/2025	FDU	W	98-52	6156
11/09/2025	Chicago St.	W	116-58	8143
11/12/2025	Akron	W	85-58	6255
11/15/2025	vs Michigan	L	54-93	2200
11/21/2025	Southern California	W	61-59	8342
11/24/2025	Central Mich.	W	83-51	6387
12/04/2025	at Ole Miss	L	62-69	3468
12/07/2025	at Florida St.	W	93-58	1986
12/11/2025	Morehead St.	W	97-48	6405
12/14/2025	at James Madison	W	78-65	4211

BELLARMINE OVERALL STATS

2025-2026 Bellarmine University Women's Basketball
Overall Statistics (as of Dec 18, 2025)

Overall Record: 2-10 Home: 1-3 Away: 1-6 Neutral: 0-1

#	Player	GP-GS	MIN	AVG	FG		3PT		FT		Rebounds				PF	DQ	A	TO	BLK	STL	PTS	AVG
					FG-FGA	FG%	3FG-FGA	3FG%	FT-FTA	FT%	OFF	DEF	TOT	AVG								
04	Ralston, Triniti	11-11	321	29.2	38-104	.365	6-22	.273	71-82	.866	3	64	67	6.1	24	2	37	39	0	19	153	13.9
03	Smith, Ava	12-6	357	29.8	36-112	.321	23-72	.319	9-12	.750	7	30	37	3.1	12	0	20	23	1	5	104	8.7
07	Jamison, Rose	12-11	333	27.8	34-106	.321	14-52	.269	21-26	.808	16	40	56	4.7	28	1	12	27	3	6	103	8.6
05	Harris, Ashlee	8-8	242	30.3	23-63	.365	6-23	.261	6-7	.857	2	9	11	1.4	11	0	25	12	2	7	58	7.3
09	Hughes, Seairra	1-0	10	10.0	2-7	.286	0-1	.000	3-3	1.000	2	3	5	5.0	4	0	0	2	0	1	7	7.0
00	Wingler, Kendall	2-2	62	31.0	5-11	.455	2-7	.286	1-1	1.000	0	9	9	4.5	2	0	6	3	0	1	13	6.5
10	Hyman, Kayce	12-5	313	26.1	24-88	.273	4-19	.211	17-20	.850	17	18	35	2.9	35	2	6	34	0	7	69	5.8
14	Chiquemba, Andrea	12-7	250	20.8	21-68	.309	11-33	.333	7-11	.636	11	18	29	2.4	18	1	4	10	1	2	60	5.0
02	Shropshire, Rachel	12-6	276	23.0	18-62	.290	13-34	.382	10-19	.526	7	38	45	3.8	32	2	9	34	4	6	59	4.9
13	Abdel Aal, Haya	9-2	122	13.6	13-30	.433	0-5	.000	7-18	.389	7	25	32	3.6	15	0	1	10	6	3	33	3.7
24	Sherrill, Patricia	12-2	139	11.6	6-29	.207	0-1	.000	8-16	.500	15	20	35	2.9	42	4	5	17	1	5	20	1.7
Total		12	2425	202.1	220-680	.324	79-269	.294	160-215	.744	111	306	417	34.8	223	12	125	217	18	62	679	56.58
Opponents		12	2425	202.1	336-799	.421	94-326	.288	175-233	.751	175	370	545	45.4	216	4	209	159	41	99	941	78.42

Team Statistics	BU	OPP
SCORING	679	941
Points Per Game	56.6	78.4
Scoring Margin	-21.8	-
FIELD GOALS-ATT	220-680	336-799
Field Goal Pct	.324	.421
3 POINT FG-ATT	79-269	94-326
3PT FG Pct	.294	.288
3PT Made Per Game	6.6	7.8
FREE THROWS-ATT	160-215	175-233
FT Pct	.744	.751
FT Made Per Game	13.3	14.6
REBOUNDS	417	545
Rebounds Per Game	34.8	45.4
Rebounds Margin	-10.7	-
ASSISTS	125	209
Assists Per Game	10.4	17.4
TURNOVERS	217	159
Turnovers Per Game	18.1	13.3
Turnovers Margin	-4.8	-
Assist/Turnover Ratio	0.6	1.3
STEALS	62	99
Steals Per Game	5.2	8.3
BLOCKS	18	41
Blocks Per Game	1.5	3.4
ATTENDANCE	1,753	28,093
Dates/Avg Per Date	4-438	7-4,013
Neutral Site #/Avg	-	1-0

Conf	Date	Opponent	W/L	Score	Att.
	11/03/25	SPALDING	W	77-51	468
	11/07/25	MOREHEAD ST.	L	68-84	450
	11/13/25	at Ohio St.	L	33-90	4,671
	11/16/25	MIAMI (OH)	L	58-77	360
	11/19/25	at Wright St.	W	83-76	6,192
	11/23/25	at Bradley	L	38-67	0
	11/28/25	vs ETSU	L	49-55	0
	11/29/25	EASTERN ILL.	L	63-68	475
	11/30/25	at Louisville	L	37-100	6,942
	12/02/25	at Illinois	L	41-90	3,979
	12/07/25	at Chattanooga	L	73-78	1,185
	12/18/25	at Arizona	L	59-105	5,124

* = Conference game

Score by Periods	1st	2nd	3rd	4th	OT	Total
Bellarmine	143	162	191	168	15	679
Opponents	219	223	265	226	8	941

BELLARMINE GAME-BY-GAME

Opponent	Date	Score		Total		3-Pointers		Free throws		Rebounds													
				FG-FGA	PCT	3FG-3FGA	PCT	FT-FTA	PCT	OFF	DEF	TOT	AVG	PF	A	TO	BLK	STL	PTS	AVG			
Spalding	11/03/2025	77-51	W	26-69	.377	7-23	.304	18-24	.750	17	38	55	55.0	19	19	13	2	12	77	77.0			
Morehead St.	11/07/2025	68-84	L	21-63	.333	8-23	.348	18-22	.818	9	25	34	44.5	26	9	22	3	2	68	72.5			
at Ohio St.	11/13/2025	33-90	L	11-60	.183	4-19	.211	7-20	.350	11	25	36	41.7	20	6	19	1	5	33	59.3			
Miami (OH)	11/16/2025	58-77	L	17-42	.405	5-15	.333	19-23	.826	5	20	25	37.5	17	7	20	1	8	58	59.0			
at Wright St.	11/19/2025	83-76	Wot	31-63	.492	6-19	.316	15-19	.789	9	34	43	38.6	17	16	10	2	5	83	63.8			
at Bradley	11/23/2025	38-67	L	14-47	.298	4-20	.200	6-8	.750	7	24	31	37.3	16	7	21	0	3	38	59.5			
vs ETSU	11/28/2025	49-55	L	14-47	.298	9-20	.450	12-17	.706	9	31	40	37.7	13	10	17	2	4	49	58.0			
Eastern Ill.	11/29/2025	63-68	L	21-57	.368	5-22	.227	16-19	.842	9	25	34	37.3	20	7	15	1	6	63	58.6			
at Louisville	11/30/2025	37-100	L	13-63	.206	4-27	.148	7-10	.700	11	19	30	36.4	15	6	18	2	5	37	56.2			
at Illinois	12/02/2025	41-90	L	11-56	.196	6-26	.231	13-17	.765	7	20	27	35.5	20	7	20	0	5	41	54.7			
at Chattanooga	12/07/2025	73-78	L	22-51	.431	11-21	.524	18-21	.857	7	19	26	34.6	20	16	18	0	4	73	56.4			
at Arizona	12/18/2025	59-105	L	19-62	.306	10-34	.294	11-15	.733	10	26	36	34.8	20	15	24	4	3	59	56.6			
Total		679		220-680	.324	79-269	.294	160-215	.744	111	306	417	34.8	223	125	217	18	62	679	56.6			
Opponents		941		336-799	.421	94-326	.288	175-233	.751	175	370	545	45.4	216	209	159	41	99	941	78.4			

Bellarmine Averages

Games Played	Points/game	FG Pct	3FG Pct	FT Pct	Rebounds/game	Assists/game	Turnovers/game	Assist/Turnover ratio	Steals/game	Blocks/game
12	56.6	32.4	29.4	74.4	34.8	10.4	18.1	0.6	5.2	1.5

BELLARMINE RESULTS

Game Records

Record	Overall	Home	Away	Neutral
ALL GAMES	2-10	1-3	1-6	0-1
CONFERENCE	0-0	0-0	0-0	0-0
NON-CONFERENCE	2-10	1-3	1-6	0-1

Team Results

Date	Opponent		Score	Att.	High Points	High Rebounds
11/03/2025	Spalding	W	77-51	468	(13) RALSTON, Triniti	(10) RALSTON, Triniti
11/07/2025	Morehead St.	L	68-84	450	(18) RALSTON, Triniti	(6) RALSTON, Triniti
11/13/2025	at Ohio St.	L	33-90	4671	(8) HYMAN, Kayce	(9) SHERRILL, Patricia
11/16/2025	Miami (OH)	L	58-77	360	(21) RALSTON, Triniti	(6) RALSTON, Triniti
11/19/2025	at Wright St.	Wot	83-76	6192	(22) RALSTON, Triniti	(15) RALSTON, Triniti
11/23/2025	at Bradley	L	38-67	885	(10) HARRIS, Ashlee	(5) HYMAN, Kayce
					(10) SMITH, Ava	(5) JAMISON, Rose
11/28/2025	vs ETSU	L	49-55	0	(17) CHIQUEMBA, Andrea	(11) JAMISON, Rose
11/29/2025	Eastern Ill.	L	63-68	475	(25) RALSTON, Triniti	(8) JAMISON, Rose
11/30/2025	at Louisville	L	37-100	6942	(10) SHROPSHIRE, Rachel	(6) HYMAN, Kayce
12/02/2025	at Illinois	L	41-90	3979	(9) SMITH, Ava	(7) SHROPSHIRE, Rachel
					(9) HYMAN, Kayce	
12/07/2025	at Chattanooga	L	73-78	1185	(26) RALSTON, Triniti	(8) SHROPSHIRE, Rachel
12/18/2025	at Arizona	L	59-105	5124	(20) JAMISON, Rose	(7) JAMISON, Rose

Attendance Summary

	Games	Attend	Avg/Game
Home	4	1753	438
Away	7	28978	4140
Neutral	1	0	0
Total	12	30731	2561

TEAM GAME HIGHS

Bellarmine - Game Highs

POINTS	83	at Wright St. (11/19/2025)
	77	Spalding (11/03/2025)
	73	at Chattanooga (12/07/2025)
	68	Morehead St. (11/07/2025)
	63	Eastern Ill. (11/29/2025)
FIELD GOALS MADE	31	at Wright St. (11/19/2025)
	26	Spalding (11/03/2025)
FIELD GOAL ATTEMPTS	69	Spalding (11/03/2025)
	63	at Louisville (11/30/2025)
	63	at Wright St. (11/19/2025)
	63	Morehead St. (11/07/2025)
FIELD GOAL PERCENTAGE	.492 (31-63)	at Wright St. (11/19/2025)
	.431 (22-51)	at Chattanooga (12/07/2025)
3 PT FG MADE	11	at Chattanooga (12/07/2025)
	10	at Arizona (12/18/2025)
3 PT FG ATTEMPTS	34	at Arizona (12/18/2025)
	27	at Louisville (11/30/2025)
3 PT FG PERCENTAGE	.524 (11-21)	at Chattanooga (12/07/2025)
	.450 (9-20)	vs ETSU (N) (11/28/2025)
FREE THROWS MADE	19	Miami (OH) (11/16/2025)
	18	at Chattanooga (12/07/2025)
	18	Morehead St. (11/07/2025)
	18	Spalding (11/03/2025)
FREE THROW ATTEMPTS	24	Spalding (11/03/2025)
	23	Miami (OH) (11/16/2025)
FREE THROW PERCENTAGE	.857 (18-21)	at Chattanooga (12/07/2025)
	.842 (16-19)	Eastern Ill. (11/29/2025)
REBOUNDS	55	Spalding (11/03/2025)
	43	at Wright St. (11/19/2025)
ASSISTS	19	Spalding (11/03/2025)
	16	at Chattanooga (12/07/2025)
	16	at Wright St. (11/19/2025)
STEALS	12	Spalding (11/03/2025)
	8	Miami (OH) (11/16/2025)
BLOCKED SHOTS	4	at Arizona (12/18/2025)
	3	Morehead St. (11/07/2025)
TURNOVERS	24	at Arizona (12/18/2025)
	22	Morehead St. (11/07/2025)
FOULS	26	Morehead St. (11/07/2025)
	20	at Arizona (12/18/2025)
	20	vs Chattanooga (12/07/2025)
	20	at Chattanooga (12/07/2025)
	20	at Illinois (12/02/2025)
	20	Eastern Ill. (11/29/2025)
	20	at Ohio St. (11/13/2025)

Opponent - Game Highs

POINTS	105	at Arizona (12/18/2025)
	100	at Louisville (11/30/2025)
	90	at Illinois (12/02/2025)
	90	at Ohio St. (11/13/2025)
	84	Morehead St. (11/07/2025)
FIELD GOALS MADE	44	at Arizona (12/18/2025)
	38	at Louisville (11/30/2025)
FIELD GOAL ATTEMPTS	83	at Illinois (12/02/2025)
	79	at Wright St. (11/19/2025)
FIELD GOAL PERCENTAGE	.564 (44-78)	at Arizona (12/18/2025)
	.514 (38-74)	at Louisville (11/30/2025)
3 PT FG MADE	13	at Louisville (11/30/2025)
	11	at Chattanooga (12/07/2025)
	11	Eastern Ill. (11/29/2025)
	11	at Wright St. (11/19/2025)
3 PT FG ATTEMPTS	36	at Wright St. (11/19/2025)
	34	at Louisville (11/30/2025)
	34	at Ohio St. (11/13/2025)
3 PT FG PERCENTAGE	.440 (11-25)	at Chattanooga (12/07/2025)
	.385 (10-26)	Miami (OH) (11/16/2025)
FREE THROWS MADE	20	Morehead St. (11/07/2025)
	19	Miami (OH) (11/16/2025)
FREE THROW ATTEMPTS	27	Eastern Ill. (11/29/2025)
	24	Morehead St. (11/07/2025)
FREE THROW PERCENTAGE	.923 (12-13)	vs ETSU (N) (11/28/2025)
	.833 (20-24)	Morehead St. (11/07/2025)
	.833 (15-18)	at Illinois (12/02/2025)
REBOUNDS	65	at Ohio St. (11/13/2025)
	64	at Illinois (12/02/2025)
ASSISTS	26	at Louisville (11/30/2025)
	25	at Illinois (12/02/2025)
STEALS	13	at Arizona (12/18/2025)
	11	Eastern Ill. (11/29/2025)
	11	at Bradley (11/23/2025)
BLOCKED SHOTS	6	at Arizona (12/18/2025)
	5	vs ETSU (N) (11/28/2025)
TURNOVERS	19	Morehead St. (11/07/2025)
	18	at Chattanooga (12/07/2025)
FOULS	25	Morehead St. (11/07/2025)
	23	Miami (OH) (11/16/2025)

TEAM GAME LOWS

Bellarmine - Game Lows

POINTS	33	at Ohio St. (11/13/2025)
	37	at Louisville (11/30/2025)
	38	at Bradley (11/23/2025)
	41	at Illinois (12/02/2025)
	49	vs ETSU (N) (11/28/2025)
FIELD GOALS MADE	11	at Illinois (12/02/2025)
	11	at Ohio St. (11/13/2025)
FIELD GOAL ATTEMPTS	42	Miami (OH) (11/16/2025)
	47	vs ETSU (N) (11/28/2025)
	47	at Bradley (11/23/2025)
FIELD GOAL PERCENTAGE	.183 (11-60)	at Ohio St. (11/13/2025)
	.196 (11-56)	at Illinois (12/02/2025)
3 PT FG MADE	4	at Louisville (11/30/2025)
	4	at Bradley (11/23/2025)
	4	at Ohio St. (11/13/2025)
3 PT FG ATTEMPTS	15	Miami (OH) (11/16/2025)
	19	at Wright St. (11/19/2025)
	19	at Ohio St. (11/13/2025)
3 PT FG PERCENTAGE	.148 (4-27)	at Louisville (11/30/2025)
	.200 (4-20)	at Bradley (11/23/2025)
FREE THROWS MADE	6	at Bradley (11/23/2025)
	7	at Louisville (11/30/2025)
	7	at Ohio St. (11/13/2025)
FREE THROW ATTEMPTS	8	at Bradley (11/23/2025)
	10	at Louisville (11/30/2025)
FREE THROW PERCENTAGE	.350 (7-20)	at Ohio St. (11/13/2025)
	.700 (7-10)	at Louisville (11/30/2025)
REBOUNDS	25	Miami (OH) (11/16/2025)
	26	at Chattanooga (12/07/2025)
ASSISTS	6	at Louisville (11/30/2025)
	6	at Ohio St. (11/13/2025)
STEALS	2	Morehead St. (11/07/2025)
	3	at Arizona (12/18/2025)
	3	at Bradley (11/23/2025)
BLOCKED SHOTS	0	at Chattanooga (12/07/2025)
	0	at Illinois (12/02/2025)
	0	at Bradley (11/23/2025)
TURNOVERS	10	at Wright St. (11/19/2025)
	13	Spalding (11/03/2025)
FOULS	13	vs ETSU (N) (11/28/2025)
	15	at Louisville (11/30/2025)

Opponent - Game Lows

POINTS	51	Spalding (11/03/2025)
	55	vs ETSU (N) (11/28/2025)
	67	at Bradley (11/23/2025)
	68	Eastern Ill. (11/29/2025)
	76	at Wright St. (11/19/2025)
FIELD GOALS MADE	14	Spalding (11/03/2025)
	19	vs ETSU (N) (11/28/2025)
FIELD GOAL ATTEMPTS	50	Miami (OH) (11/16/2025)
	54	Eastern Ill. (11/29/2025)
FIELD GOAL PERCENTAGE	.237 (14-59)	Spalding (11/03/2025)
	.284 (19-67)	vs ETSU (N) (11/28/2025)
3 PT FG MADE	3	at Arizona (12/18/2025)
	3	at Illinois (12/02/2025)
3 PT FG ATTEMPTS	13	at Arizona (12/18/2025)
	19	Spalding (11/03/2025)
3 PT FG PERCENTAGE	.136 (3-22)	at Illinois (12/02/2025)
	.160 (4-25)	at Bradley (11/23/2025)
FREE THROWS MADE	11	at Chattanooga (12/07/2025)
	11	at Louisville (11/30/2025)
	11	at Bradley (11/23/2025)
	11	at Wright St. (11/19/2025)
FREE THROW ATTEMPTS	13	vs ETSU (N) (11/28/2025)
	15	at Chattanooga (12/07/2025)
	15	at Louisville (11/30/2025)
	15	at Bradley (11/23/2025)
FREE THROW PERCENTAGE	.630 (17-27)	Eastern Ill. (11/29/2025)
	.647 (11-17)	at Wright St. (11/19/2025)
REBOUNDS	28	at Chattanooga (12/07/2025)
	28	Miami (OH) (11/16/2025)
ASSISTS	8	Spalding (11/03/2025)
	11	vs ETSU (N) (11/28/2025)
STEALS	1	at Wright St. (11/19/2025)
	4	vs ETSU (N) (11/28/2025)
BLOCKED SHOTS	0	at Chattanooga (12/07/2025)
	2	Spalding (11/03/2025)
TURNOVERS	8	at Wright St. (11/19/2025)
	9	vs ETSU (N) (11/28/2025)
FOULS	11	at Louisville (11/30/2025)
	14	at Bradley (11/23/2025)

INDIVIDUAL GAME HIGHS - OVERALL

Bellarmine - Individual Game Highs

POINTS	26	Triniti Ralston at Chattanooga (12/07/2025)
	25	Triniti Ralston vs Eastern Ill. (11/29/2025)
	22	Triniti Ralston at Wright St. (11/19/2025)
	21	Ashlee Harris at Wright St. (11/19/2025)
	21	Triniti Ralston vs Miami (OH) (11/16/2025)
FIELD GOALS MADE	9	Ashlee Harris at Wright St. (11/19/2025)
	8	Triniti Ralston vs Eastern Ill. (11/29/2025)
FIELD GOAL ATTEMPTS	17	Rose Jamison at Arizona (12/18/2025)
	16	Triniti Ralston vs Eastern Ill. (11/29/2025)
FIELD GOAL PERCENTAGE (min 5 made)	.750 (9-12)	Ashlee Harris at Wright St. (11/19/2025)
	.750 (6-8)	Andrea Chiquemba vs ETSU (N) (11/28/2025)
3 PT FG MADE	5	Andrea Chiquemba vs ETSU (N) (11/28/2025)
	4	Ava Smith at Chattanooga (12/07/2025)
	4	Ava Smith vs Morehead St. (11/07/2025)
3 PT FG ATTEMPTS	11	Rose Jamison at Arizona (12/18/2025)
	10	Ava Smith at Chattanooga (12/07/2025)
3 PT FG PERCENTAGE (min 2 made)	1.000 (5-5)	Andrea Chiquemba vs ETSU (N) (11/28/2025)
	1.000 (4-4)	Ava Smith vs Morehead St. (11/07/2025)
	1.000 (2-2)	Rachel Shropshire at Chattanooga (12/07/2025)
	1.000 (2-2)	Rachel Shropshire vs ETSU (N) (11/28/2025)
	1.000 (2-2)	Ashlee Harris at Wright St. (11/19/2025)
FREE THROWS MADE	12	Triniti Ralston vs Miami (OH) (11/16/2025)
	10	Triniti Ralston at Chattanooga (12/07/2025)
FREE THROW ATTEMPTS	12	Triniti Ralston vs Miami (OH) (11/16/2025)
	11	Triniti Ralston at Chattanooga (12/07/2025)
	11	Triniti Ralston vs Spalding (11/03/2025)
FREE THROW PERCENTAGE (min 3 made)	1.000 (12-12)	Triniti Ralston vs Miami (OH) (11/16/2025)
	1.000 (9-9)	Triniti Ralston vs Eastern Ill. (11/29/2025)
	1.000 (4-4)	Ava Smith vs Morehead St. (11/07/2025)
	1.000 (7-7)	Triniti Ralston vs Morehead St. (11/07/2025)
	1.000 (4-4)	Rose Jamison at Chattanooga (12/07/2025)
	1.000 (4-4)	Kayce Hyman at Illinois (12/02/2025)
	1.000 (4-4)	Kayce Hyman at Louisville (11/30/2025)
	1.000 (4-4)	Kayce Hyman vs Spalding (11/03/2025)
	1.000 (3-3)	Seairra Hughes vs Morehead St. (11/07/2025)
REBOUNDS	15	Triniti Ralston at Wright St. (11/19/2025)
	11	Rose Jamison vs ETSU (N) (11/28/2025)
ASSISTS	9	Triniti Ralston at Chattanooga (12/07/2025)
	7	Triniti Ralston at Wright St. (11/19/2025)
STEALS	4	Triniti Ralston at Illinois (12/02/2025)
	4	Triniti Ralston at Wright St. (11/19/2025)

Opponent - Individual Game Highs

POINTS	30	Gianna Corbitt at Chattanooga (12/07/2025)
	26	Amber Scalia vs Miami (OH) (11/16/2025)
	22	Landon Forbes vs Morehead St. (11/07/2025)
	21	Ava Stoller vs Eastern Ill. (11/29/2025)
	20	Laura Toffali vs Morehead St. (11/07/2025)
FIELD GOALS MADE	10	Gianna Corbitt at Chattanooga (12/07/2025)
	8	Breezie Williams at Wright St. (11/19/2025)
	8	Amber Scalia vs Miami (OH) (11/16/2025)
	8	Landon Forbes vs Morehead St. (11/07/2025)
FIELD GOAL ATTEMPTS	18	Breezie Williams at Wright St. (11/19/2025)
	16	Kaylen Nelson at Bradley (11/23/2025)
	16	Claire Henson at Wright St. (11/19/2025)
FIELD GOAL PERCENTAGE (min 5 made)	.857 (6-7)	Kamryn Kitchen at Arizona (12/18/2025)
	.857 (6-7)	Danilah Trammell at Arizona (12/18/2025)
3 PT FG MADE	5	Gianna Corbitt at Chattanooga (12/07/2025)
	5	Rylee Sagester at Wright St. (11/19/2025)
	5	Amber Scalia vs Miami (OH) (11/16/2025)
3 PT FG ATTEMPTS	12	Rylee Sagester at Wright St. (11/19/2025)
	11	Kaylen Nelson at Bradley (11/23/2025)
3 PT FG PERCENTAGE (min 2 made)	.750 (3-4)	Reyna Scott at Louisville (11/30/2025)
	.714 (5-7)	Gianna Corbitt at Chattanooga (12/07/2025)
FREE THROWS MADE	8	Ava Stoller vs Eastern Ill. (11/29/2025)
	7	Laura Toffali vs Morehead St. (11/07/2025)
FREE THROW ATTEMPTS	11	Ava Stoller vs Eastern Ill. (11/29/2025)
	9	Laura Toffali vs Morehead St. (11/07/2025)
FREE THROW PERCENTAGE (min 3 made)	1.000 (6-6)	Destiny Jackson at Illinois (12/02/2025)
	1.000 (6-6)	Jaloni Cambridge at Ohio St. (11/13/2025)
	1.000 (4-4)	Tanyuel Welch at Arizona (12/18/2025)
	1.000 (4-4)	Cearah Parchment at Illinois (12/02/2025)
	1.000 (4-4)	Anala Nelson vs ETSU (N) (11/28/2025)
	1.000 (4-4)	Chloe Chard Peloquin at Wright St. (11/19/2025)
	1.000 (4-4)	Nicole Hollowell vs Spalding (11/03/2025)
	1.000 (3-3)	Mackently Randolph at Louisville (11/30/2025)
	1.000 (3-3)	Meghan Downing vs ETSU (N) (11/28/2025)
	1.000 (3-3)	Claire McDougall at Bradley (11/23/2025)
	1.000 (3-3)	Macie Taylor vs Miami (OH) (11/16/2025)
	1.000 (3-3)	Ilse de Vries vs Miami (OH) (11/16/2025)
	1.000 (3-3)	Landon Forbes vs Morehead St. (11/07/2025)
REBOUNDS	14	Zaneiya Batiste vs Spalding (11/03/2025)
	12	Cearah Parchment at Illinois (12/02/2025)
	12	Claire Henson at Wright St. (11/19/2025)
	12	Amber Tretter vs Miami (OH) (11/16/2025)
ASSISTS	11	Caia Elisaldez at Chattanooga (12/07/2025)
	8	Noelani Cornfield at Arizona (12/18/2025)
STEALS	5	Noelani Cornfield at Arizona (12/18/2025)
	4	Gianna Corbitt at Chattanooga (12/07/2025)
	4	Claire McDougall at Bradley (11/23/2025)
BLOCKED SHOTS	4	Meghan Downing vs ETSU (N) (11/28/2025)
	3	Violet McNece vs Morehead St. (11/07/2025)
TURNOVERS	8	Caia Elisaldez at Chattanooga (12/07/2025)
	6	Gabby Douglass vs Spalding (11/03/2025)
FOULS	5	Caia Elisaldez at Chattanooga (12/07/2025)
	5	Claire Henson at Wright St. (11/19/2025)
	5	Amber Tretter vs Miami (OH) (11/16/2025)
	5	Marie Sepp vs Morehead St. (11/07/2025)

ASUN TEAM STATS


2025-26 ASUN Women's Basketball
Conference Statistics
All games

Page 1/6
as of Dec 19, 2025

Scoring Offense

	Team	G	W-L	Pts	AVG
1.	Stetson	8	6-2	625	78.13
2.	Eastern Ky.	11	7-4	811	73.73
3.	Central Ark.	11	7-4	810	73.64
4.	Austin Peay	7	5-2	510	72.86
5.	West Ga.	9	5-4	645	71.67
6.	Jacksonville	10	7-3	669	66.90
7.	Queens (NC)	10	5-5	648	64.80
8.	FGCU	8	3-5	512	64.00
9.	North Ala.	10	5-5	639	63.90
10.	Lipscomb	11	3-8	691	62.82
11.	North Florida	10	5-5	611	61.10
12.	Bellarmine	12	2-10	679	56.58

Scoring Defense

	Team	G	Pts	AVG
1.	Central Ark.	11	639	58.09
2.	Austin Peay	7	425	60.71
3.	Stetson	8	487	60.88
4.	North Ala.	10	623	62.30
5.	Eastern Ky.	11	697	63.36
6.	FGCU	8	517	64.63
7.	Lipscomb	11	725	65.91
8.	West Ga.	9	595	66.11
9.	Queens (NC)	10	674	67.40
10.	Jacksonville	10	699	69.90
11.	North Florida	10	738	73.80
12.	Bellarmine	12	941	78.42

Scoring Margin

	Team	G	Off	Def	Margin
1.	Stetson	8	78.13	60.88	+17.25
2.	Central Ark.	11	73.64	58.09	+15.55
3.	Austin Peay	7	72.86	60.71	+12.14
4.	Eastern Ky.	11	73.73	63.36	+10.36
5.	West Ga.	9	71.67	66.11	+5.56
6.	North Ala.	10	63.90	62.30	+1.60
7.	FGCU	8	64.00	64.63	-0.63
8.	Queens (NC)	10	64.80	67.40	-2.60
9.	Jacksonville	10	66.90	69.90	-3.00
10.	Lipscomb	11	62.82	65.91	-3.09
11.	North Florida	10	61.10	73.80	-12.70
12.	Bellarmine	12	56.58	78.42	-21.83

Free Throw Percentage

	Team	G	FTM	FTA	Pct.
1.	Bellarmine	12	160	215	.744
2.	Eastern Ky.	11	116	159	.730
3.	Austin Peay	7	95	133	.714
4.	West Ga.	9	142	205	.693
5.	Jacksonville	10	181	262	.691
6.	Central Ark.	11	100	145	.690
7.	Stetson	8	97	141	.688
8.	North Florida	10	80	117	.684
9.	Lipscomb	11	120	182	.659
10.	North Ala.	10	90	137	.657
11.	FGCU	8	97	148	.655
12.	Queens (NC)	10	116	177	.655

Field Goal Percentage

	Team	G	FGM	FGA	Pct.
1.	Stetson	8	223	490	.455
2.	Austin Peay	7	188	414	.454
3.	FGCU	8	186	413	.450
4.	Eastern Ky.	11	298	703	.424
5.	Central Ark.	11	304	724	.420
6.	North Florida	10	233	583	.400
7.	West Ga.	9	214	540	.396
8.	Lipscomb	11	244	619	.394
9.	North Ala.	10	245	628	.390
10.	Queens (NC)	10	228	606	.376
11.	Jacksonville	10	222	600	.370
12.	Bellarmine	12	220	680	.324

Field Goal Percentage Defense

	Team	G	FGM	FGA	Pct.
1.	Central Ark.	11	203	609	.333
2.	Stetson	8	172	485	.355
3.	North Ala.	10	214	600	.357
4.	Austin Peay	7	139	378	.368
5.	Eastern Ky.	11	251	667	.376
6.	FGCU	8	191	506	.377
7.	Queens (NC)	10	237	615	.385
8.	West Ga.	9	223	567	.393
9.	Lipscomb	11	272	689	.395
10.	Jacksonville	10	257	639	.402
11.	Bellarmine	12	336	799	.421
12.	North Florida	10	276	643	.429

ASUN TEAM STATS


2025-26 ASUN Women's Basketball
Conference Statistics
All games

Page 2/6
as of Dec 19, 2025

3-Point FG Percentage

	Team	G	3FG	3FGA	Pct.
1.	Stetson	8	82	211	.389
2.	Queens (NC)	10	76	222	.342
3.	Eastern Ky.	11	99	294	.337
4.	Central Ark.	11	102	314	.325
5.	West Ga.	9	75	243	.309
6.	Jacksonville	10	44	149	.295
7.	Bellarmine	12	79	269	.294
8.	Lipscomb	11	83	290	.286
9.	North Ala.	10	59	208	.284
10.	Austin Peay	7	39	139	.281
11.	North Florida	10	65	232	.280
12.	FGCU	8	43	154	.279

3-Point FG Percentage Defense

	Team	G	3FG	3FGA	Pct.
1.	Jacksonville	10	55	230	.239
2.	North Ala.	10	52	205	.254
3.	Eastern Ky.	11	66	254	.260
4.	FGCU	8	54	203	.266
5.	Central Ark.	11	70	255	.275
6.	Bellarmine	12	94	326	.288
7.	Stetson	8	49	168	.292
8.	Queens (NC)	10	59	202	.292
9.	West Ga.	9	53	179	.296
10.	Austin Peay	7	41	137	.299
11.	North Florida	10	65	215	.302
12.	Lipscomb	11	71	230	.309

Rebounding Offense

	Team	G	Rebounds	AVG
1.	West Ga.	9	380	42.22
2.	Central Ark.	11	463	42.09
3.	Stetson	8	331	41.38
4.	North Ala.	10	412	41.20
5.	Queens (NC)	10	399	39.90
6.	Eastern Ky.	11	431	39.18
7.	Austin Peay	7	268	38.29
8.	Lipscomb	11	406	36.91
9.	FGCU	8	288	36.00
10.	Jacksonville	10	357	35.70
11.	Bellarmine	12	417	34.75
12.	North Florida	10	345	34.50

Rebounding Defense

	Team	G	Rebounds	AVG
1.	Austin Peay	7	220	31.43
2.	Stetson	8	286	35.75
3.	Central Ark.	11	399	36.27
4.	West Ga.	9	332	36.89
5.	FGCU	8	298	37.25
6.	Lipscomb	11	426	38.73
7.	Eastern Ky.	11	429	39.00
8.	North Ala.	10	391	39.10
	North Florida	10	391	39.10
10.	Queens (NC)	10	400	40.00
11.	Jacksonville	10	413	41.30
12.	Bellarmine	12	545	45.42

Rebounding Margin

	Team	G	Team	AVG	Opp.	AVG	Margin
1.	Austin Peay	7	268	38.29	220	31.43	+6.86
2.	Central Ark.	11	463	42.09	399	36.27	+5.82
3.	Stetson	8	331	41.38	286	35.75	+5.63
4.	West Ga.	9	380	42.22	332	36.89	+5.33
5.	North Ala.	10	412	41.20	391	39.10	+2.10
6.	Eastern Ky.	11	431	39.18	429	39.00	+0.18
7.	Queens (NC)	10	399	39.90	400	40.00	-0.10
8.	FGCU	8	288	36.00	298	37.25	-1.25
9.	Lipscomb	11	406	36.91	426	38.73	-1.82
10.	North Florida	10	345	34.50	391	39.10	-4.60
11.	Jacksonville	10	357	35.70	413	41.30	-5.60
12.	Bellarmine	12	417	34.75	545	45.42	-10.67

Blocked Shots

	Team	G	No.	AVG
1.	Lipscomb	11	62	5.64
2.	Eastern Ky.	11	46	4.18
3.	Central Ark.	11	38	3.45
4.	Jacksonville	10	33	3.30
	North Ala.	10	33	3.30
6.	Queens (NC)	10	32	3.20
	North Florida	10	32	3.20
8.	West Ga.	9	28	3.11
9.	FGCU	8	24	3.00
10.	Stetson	8	21	2.63
11.	Austin Peay	7	13	1.86
12.	Bellarmine	12	18	1.50

ASUN TEAM STATS


2025-26 ASUN Women's Basketball
Conference Statistics
All games

Page 3/6
as of Dec 19, 2025

Assists

	Team	G	No.	AVG
1.	Stetson	8	131	16.38
2.	Eastern Ky.	11	180	16.36
3.	Central Ark.	11	171	15.55
4.	Austin Peay	7	96	13.71
5.	North Florida	10	135	13.50
6.	North Ala.	10	133	13.30
7.	West Ga.	9	119	13.22
8.	Queens (NC)	10	126	12.60
9.	FGCU	8	96	12.00
10.	Jacksonville	10	111	11.10
11.	Lipscomb	11	120	10.91
12.	Bellarmine	12	125	10.42

Steals

	Team	G	No.	AVG
1.	Jacksonville	10	99	9.90
2.	Central Ark.	11	102	9.27
3.	Austin Peay	7	59	8.43
4.	West Ga.	9	74	8.22
5.	Queens (NC)	10	82	8.20
6.	Stetson	8	64	8.00
7.	North Ala.	10	79	7.90
8.	North Florida	10	77	7.70
9.	Lipscomb	11	80	7.27
10.	Eastern Ky.	11	78	7.09
11.	FGCU	8	55	6.88
12.	Bellarmine	12	62	5.17

Turnover Margin

	Team	G	Team	AVG	Opp.	AVG	Margin
1.	Central Ark.	11	151	13.73	204	18.55	+4.82
2.	Eastern Ky.	11	165	15.00	195	17.73	+2.73
3.	Jacksonville	10	173	17.30	193	19.30	+2.00
4.	Austin Peay	7	124	17.71	137	19.57	+1.86
5.	Stetson	8	117	14.63	129	16.13	+1.50
6.	North Ala.	10	178	17.80	167	16.70	-1.10
7.	West Ga.	9	164	18.22	150	16.67	-1.56
8.	Lipscomb	11	191	17.36	170	15.45	-1.91
9.	Queens (NC)	10	196	19.60	172	17.20	-2.40
10.	FGCU	8	145	18.13	115	14.38	-3.75
11.	North Florida	10	207	20.70	160	16.00	-4.70
12.	Bellarmine	12	217	18.08	159	13.25	-4.83

Assist/Turnover Ratio

	Team	G	Ast	AVG	T/O	AVG	Ratio
1.	Central Ark.	11	171	15.55	151	13.73	1.13
2.	Stetson	8	131	16.38	117	14.63	1.12
3.	Eastern Ky.	11	180	16.36	165	15.00	1.09
4.	Austin Peay	7	96	13.71	124	17.71	0.77
5.	North Ala.	10	133	13.30	178	17.80	0.75
6.	West Ga.	9	119	13.22	164	18.22	0.73
7.	FGCU	8	96	12.00	145	18.13	0.66
8.	North Florida	10	135	13.50	207	20.70	0.65
9.	Queens (NC)	10	126	12.60	196	19.60	0.64
10.	Jacksonville	10	111	11.10	173	17.30	0.64
11.	Lipscomb	11	120	10.91	191	17.36	0.63
12.	Bellarmine	12	125	10.42	217	18.08	0.58

Offensive Rebounds Per Game

	Team	G	No.	AVG
1.	West Ga.	9	138	15.33
2.	Austin Peay	7	99	14.14
3.	Central Ark.	11	147	13.36
4.	North Ala.	10	132	13.20
5.	Queens (NC)	10	131	13.10
6.	North Florida	10	118	11.80
7.	Jacksonville	10	114	11.40
8.	Stetson	8	90	11.25
9.	Eastern Ky.	11	114	10.36
10.	Lipscomb	11	112	10.18
11.	Bellarmine	12	111	9.25
12.	FGCU	8	58	7.25

Defensive Rebounds Per Game

	Team	G	No.	AVG
1.	Stetson	8	241	30.13
2.	Eastern Ky.	11	317	28.82
3.	FGCU	8	230	28.75
4.	Central Ark.	11	316	28.73
5.	North Ala.	10	280	28.00
6.	West Ga.	9	242	26.89
7.	Queens (NC)	10	268	26.80
8.	Lipscomb	11	294	26.73
9.	Bellarmine	12	306	25.50
10.	Jacksonville	10	243	24.30
11.	Austin Peay	7	169	24.14
12.	North Florida	10	227	22.70

ASUN TEAM STATS


2025-26 ASUN Women's Basketball
Conference Statistics
All games

Page 4/6
as of Dec 19, 2025

Defensive Reb Percentage

	Team	G	D-Reb	Opp. OR	D-Reb%
1.	Central Ark.	11	316	112	.738
2.	Stetson	8	241	90	.728
3.	Eastern Ky.	11	317	121	.724
4.	North Ala.	10	280	121	.698
5.	FGCU	8	230	106	.685
6.	Lipscomb	11	294	140	.677
7.	Austin Peay	7	169	82	.673
8.	Queens (NC)	10	268	131	.672
9.	West Ga.	9	242	124	.661
10.	Jacksonville	10	243	130	.651
11.	Bellarmine	12	306	175	.636
12.	North Florida	10	227	149	.604

Offensive Reb Percentage

	Team	G	O-Reb	Opp. DR	O-Reb%
1.	Austin Peay	7	99	138	.418
2.	West Ga.	9	138	208	.399
3.	Central Ark.	11	147	287	.339
4.	North Ala.	10	132	270	.328
5.	North Florida	10	118	242	.328
6.	Queens (NC)	10	131	269	.328
7.	Stetson	8	90	196	.315
8.	Jacksonville	10	114	283	.287
9.	Lipscomb	11	112	286	.281
10.	Eastern Ky.	11	114	308	.270
11.	FGCU	8	58	192	.232
12.	Bellarmine	12	111	370	.231

3-Point FG Made

	Team	G	No.	Avg
1.	Stetson	8	82	10.25
2.	Central Ark.	11	102	9.27
3.	Eastern Ky.	11	99	9.00
4.	West Ga.	9	75	8.33
5.	Queens (NC)	10	76	7.60
6.	Lipscomb	11	83	7.55
7.	Bellarmine	12	79	6.58
8.	North Florida	10	65	6.50
9.	North Ala.	10	59	5.90
10.	Austin Peay	7	39	5.57
11.	FGCU	8	43	5.38
12.	Jacksonville	10	44	4.40

Conference Records

Team	Conference	Pct.	PF	PA	Overall	Pct.	PF	PA
Austin Peay	0-0	.000	0.00	0.00	5-2	.714	72.86	60.71
Bellarmine	0-0	.000	0.00	0.00	2-10	.167	56.58	78.42
Central Ark.	0-0	.000	0.00	0.00	7-4	.636	73.64	58.09
Eastern Ky.	0-0	.000	0.00	0.00	7-4	.636	73.73	63.36
FGCU	0-0	.000	0.00	0.00	3-5	.375	64.00	64.63
Jacksonville	0-0	.000	0.00	0.00	7-3	.700	66.90	69.90
Lipscomb	0-0	.000	0.00	0.00	3-8	.273	62.82	65.91
North Ala.	0-0	.000	0.00	0.00	5-5	.500	63.90	62.30
North Florida	0-0	.000	0.00	0.00	5-5	.500	61.10	73.80
Queens (NC)	0-0	.000	0.00	0.00	5-5	.500	64.80	67.40
Stetson	0-0	.000	0.00	0.00	6-2	.750	78.13	60.88
West Ga.	0-0	.000	0.00	0.00	5-4	.556	71.67	66.11

Current Unbeaten Streak

Team	
Stetson	4
North Florida	2
FGCU	1
West Ga.	1
Austin Peay	1

ASUN INDIVIDUAL LEADERS


2025-26 ASUN Women's Basketball
Individual Statistics
All games

Page 1/4
as of Dec 19, 2025

To be ranked, a player must appear in at least 75.0% of their team's games.

Scoring

	Player	G	FG	3FG	FT	Pts	AVG
1.	Thomas, Cameron - Stet	8	50	22	36	158	19.75
2.	Donald, Asia - UWG	9	45	13	45	148	16.44
3.	Jones-Grant, Brenae - Queens	10	59	14	19	151	15.10
4.	Jones, Jasmine - UWG	9	43	31	14	131	14.56
5.	Littleford, Shae - UCA	11	54	18	34	160	14.55
6.	Freihofer, Liz - ECU	11	49	27	33	158	14.36
7.	Sheals, Anovia - APSU	7	38	6	17	99	14.14
8.	Ralston, Triniti - BU	11	38	6	71	153	13.91
9.	McMillan, Mary - Stet	8	39	19	14	111	13.88
10.	Tolbert, Sydne - UWG	9	39	12	26	116	12.89
11.	Heard, Molly - Lips	11	50	12	29	141	12.82
	Vaz, Joseana - ECU	11	57	11	16	141	12.82
13.	Stephens, Bree - UCA	11	53	15	11	132	12.00
	Charlton, Veronaye - APSU	7	28	7	21	84	12.00
15.	Barreto, Ana - Queens	10	41	27	10	119	11.90
16.	Miller, McKayla - Lips	11	50	19	10	129	11.73
17.	Williams, Priscilla - Jville	10	37	9	34	117	11.70
	Alvarado, Alexsandra - UNA	10	43	22	9	117	11.70
19.	Kemp, Cheyanne - UCA	11	48	15	11	122	11.09
20.	McGill, Dezuray - UNF	10	47	5	8	107	10.70

Rebounding

	Player	G	Off	Def	Total	AVG
1.	Jones, Destiny - UWG	8	33	41	74	9.25
2.	Jones-Grant, Brenae - Queens	10	35	52	87	8.70
3.	Sorrentino, Aleah - Stet	8	19	46	65	8.13
4.	Vaz, Joseana - ECU	11	21	62	83	7.55
5.	Stephens, Bree - UCA	11	17	64	81	7.36
6.	Bowen, Taylor - Lips	11	24	54	78	7.09
7.	Williams, Priscilla - Jville	10	13	57	70	7.00
8.	Hicks, Hannah - Queens	10	23	44	67	6.70
9.	Sheals, Anovia - APSU	7	13	32	45	6.43
10.	Douglas, Sinai - FGCU	8	6	44	50	6.25
	Keshi, Promise - Stet	8	13	37	50	6.25
12.	Ralston, Triniti - BU	11	3	64	67	6.09
	Freihofer, Liz - ECU	11	12	55	67	6.09
14.	Miller, McKayla - Lips	11	7	58	65	5.91
15.	Jackson, Gabby - UNA	10	10	47	57	5.70
16.	Bowman, Carmaya - Jville	10	19	33	52	5.20
17.	Thomas, Cameron - Stet	8	10	31	41	5.13
	Caso, Rose - Stet	8	13	28	41	5.13
19.	Lindsey, Kailani - ECU	11	19	36	55	5.00
	Santacaterina, Paris - UCA	11	10	45	55	5.00
	Donald, Asia - UWG	9	12	33	45	5.00
	Staton, Nay - FGCU	8	3	37	40	5.00

Field Goal Percentage (Minimum 5 FGM/G average)

	Player	G	FGM	FGA	Pct.
1.	Jones-Grant, Brenae - Queens	10	59	97	.608
2.	Thomas, Cameron - Stet	8	50	102	.490
3.	Vaz, Joseana - ECU	11	57	131	.435
4.	Donald, Asia - UWG	9	45	107	.421
5.	Sheals, Anovia - APSU	7	38	99	.384

Assists

	Player	G	No.	AVG
1.	McMillan, Mary - Stet	8	39	4.88
2.	Angeles, Althea Kara - ECU	11	50	4.55
3.	O'Gara, Grace - UWG	8	33	4.13
4.	Tolbert, Sydne - UWG	9	36	4.00
5.	Charlton, Veronaye - APSU	7	27	3.86
6.	Branton, Jim'Miyah - APSU	7	26	3.71
7.	Colvin, Dayuna - Queens	10	36	3.60
8.	Akinsola, Bukky - UNA	10	35	3.50
	Douglas, Sinai - FGCU	8	28	3.50
10.	Ralston, Triniti - BU	11	37	3.36
11.	Washington, Alexa - UNF	9	29	3.22
12.	Freihofer, Liz - ECU	11	32	2.91
13.	Barreto, Ana - Queens	10	28	2.80
14.	Waldon, Alonya - UNF	9	25	2.78
15.	Heard, Molly - Lips	11	30	2.73

ASUN INDIVIDUAL LEADERS


2025-26 ASUN Women's Basketball
Individual Statistics
All games

Page 2/4
as of Dec 19, 2025

Free Throw Percentage (Minimum 2.5 FTM/G average)

	Player	G	FTM	FTA	Pct.
1.	Ralston, Triniti - BU	11	71	82	.866
2.	Thomas, Cameron - Stet	8	36	42	.857
3.	White, Mychal - Jville	10	43	51	.843
4.	Freihofer, Liz - ECU	11	33	40	.825
5.	Colvin, Dayuna - Queens	10	32	40	.800
6.	Waldon, Alonya - UNF	9	27	35	.771
7.	Tolbert, Sydne - UWG	9	26	34	.765
8.	Donald, Asia - UWG	9	45	60	.750
	Charlton, Veronaye - APSU	7	21	28	.750
10.	Littleford, Shae - UCA	11	34	46	.739
11.	Williams, Priscilla - Jville	10	34	48	.708
12.	Heard, Molly - Lips	11	29	50	.580
13.	Jones, Destiny - UWG	8	21	44	.477

Steals

	Player	G	No.	AVG
1.	Brown, Tatum - Jville	10	27	2.70
2.	Jones-Grant, Brenae - Queens	10	22	2.20
3.	Jones, Destiny - UWG	8	16	2.00
4.	Tolbert, Sydne - UWG	9	16	1.78
5.	Heard, Molly - Lips	11	19	1.73
	Angeles, Althea Kara - ECU	11	19	1.73
	Ralston, Triniti - BU	11	19	1.73
	Stephens, Bree - UCA	11	19	1.73
9.	O'Gara, Grace - UWG	8	13	1.63
10.	Barreto, Ana - Queens	10	16	1.60
	Akinsola, Bukky - UNA	10	16	1.60
12.	Littleford, Shae - UCA	11	17	1.55
13.	Vaz, Joseana - ECU	11	16	1.45
14.	Waldon, Alonya - UNF	9	13	1.44
15.	Gnahore, Ines - APSU	7	10	1.43

3-Point FG Percentage (Minimum 2.5 3FG/G average)

	Player	G	3FG	3FGA	Pct.
1.	Thomas, Cameron - Stet	8	22	49	.449
2.	Jones, Jasmine - UWG	9	31	77	.403
3.	Barreto, Ana - Queens	10	27	77	.351

3-Point FG Made

	Player	G	3FG	Avg
1.	Jones, Jasmine - UWG	9	31	3.44
2.	Thomas, Cameron - Stet	8	22	2.75
3.	Barreto, Ana - Queens	10	27	2.70
4.	Freihofer, Liz - ECU	11	27	2.45
5.	McMillan, Mary - Stet	8	19	2.38
6.	Alvarado, Alexsandra - UNA	10	22	2.20
7.	Smith, Ava - BU	12	23	1.92
8.	Stinson, Jamisyn - UNF	10	18	1.80
9.	Miller, McKayla - Lips	11	19	1.73
10.	Littleford, Shae - UCA	11	18	1.64
11.	Gordon, Karina - FGCU	8	13	1.63
	Eppley, Jorah - Stet	8	13	1.63
13.	Angeles, Althea Kara - ECU	11	17	1.55
14.	Mapp, Jermany - Queens	10	15	1.50
15.	Cook, Jenna - UCA	11	16	1.45

ASUN INDIVIDUAL LEADERS


2025-26 ASUN Women's Basketball
Individual Statistics
All games

Page 3/4
as of Dec 19, 2025

Blocked Shots

	Player	G	No.	AVG
1.	Counts, Hope - Lips	11	27	2.45
2.	Stephens, Bree - UCA	11	20	1.82
3.	Miller, McKayla - Lips	11	16	1.45
4.	Hicks, Hannah - Queens	10	12	1.20
	Buzzetti, Georgi - UNF	10	12	1.20
6.	Freihofer, Liz - ECU	11	12	1.09
7.	Williams, Priscilla - Jville	10	10	1.00
	Jones-Grant, Brenae - Queens	10	10	1.00
	Keshi, Promise - Stet	8	8	1.00
10.	Jones, Jasmine - UWG	9	8	0.89
11.	Mortag, Anna - FGCU	8	7	0.88
	Sorrentino, Aleah - Stet	8	7	0.88
13.	Lindsey, Kailani - ECU	11	9	0.82
14.	Criswell, Katie - UNA	10	8	0.80
15.	McKenzie, Anya - UWG	9	7	0.78

Assist/Turnover Ratio (Minimum 3 AST/G average)

	Player	G	Ast.	T/O	Ratio
1.	McMillan, Mary - Stet	8	39	12	3.25
2.	Charlton, Veronaye - APSU	7	27	12	2.25
3.	Akinsola, Bukky - UNA	10	35	23	1.52
4.	Branton, Jim'Miyah - APSU	7	26	18	1.44
5.	Angeles, Althea Kara - ECU	11	50	35	1.43
6.	O'Gara, Grace - UWG	8	33	24	1.38
7.	Tolbert, Sydne - UWG	9	36	27	1.33
8.	Douglas, Sinai - FGCU	8	28	22	1.27
9.	Washington, Alexa - UNF	9	29	30	0.97
10.	Ralston, Trinita - BU	11	37	39	0.95
11.	Colvin, Dayuna - Queens	10	36	45	0.80

Offensive Rebounds

	Player	G	No.	AVG
1.	Jones, Destiny - UWG	8	33	4.13
2.	Jones-Grant, Brenae - Queens	10	35	3.50
3.	Sorrentino, Aleah - Stet	8	19	2.38
4.	Hicks, Hannah - Queens	10	23	2.30
5.	Amaning, Linda - UCA	11	25	2.27
6.	Bowen, Taylor - Lips	11	24	2.18
7.	Blatchford, Elle - UNF	10	21	2.10
8.	Howard, India - UNA	10	20	2.00
	Ulander, Venla - UNA	9	18	2.00
10.	Vaz, Joseana - ECU	11	21	1.91
11.	Bowman, Carmaya - Jville	10	19	1.90
12.	Sheals, Anovia - APSU	7	13	1.86
13.	O'Gara, Grace - UWG	8	14	1.75
14.	Lindsey, Kailani - ECU	11	19	1.73
15.	Howard, Kali - Jville	10	17	1.70
	Franks, Breah - Queens	10	17	1.70
	Klinge, Jazzy - UNA	10	17	1.70

Defensive Rebounds

	Player	G	No.	AVG
1.	Ralston, Trinita - BU	11	64	5.82
	Stephens, Bree - UCA	11	64	5.82
3.	Sorrentino, Aleah - Stet	8	46	5.75
4.	Williams, Priscilla - Jville	10	57	5.70
5.	Vaz, Joseana - ECU	11	62	5.64
6.	Douglas, Sinai - FGCU	8	44	5.50
7.	Miller, McKayla - Lips	11	58	5.27
8.	Jones-Grant, Brenae - Queens	10	52	5.20
9.	Jones, Destiny - UWG	8	41	5.13
10.	Freihofer, Liz - ECU	11	55	5.00
11.	Bowen, Taylor - Lips	11	54	4.91
12.	Jackson, Gabby - UNA	10	47	4.70
13.	Keshi, Promise - Stet	8	37	4.63
	Staton, Nay - FGCU	8	37	4.63
15.	Sheals, Anovia - APSU	7	32	4.57

ASUN INDIVIDUAL LEADERS


2025-26 ASUN Women's Basketball
Individual Statistics
All games

Page 4/4
as of Dec 19, 2025

Minutes Played

	Player	G	No.	AVG
1.	Freihofer, Liz - EKU	11	388	35.27
2.	O'Gara, Grace - UWG	8	278	34.81
3.	Tolbert, Sydne - UWG	9	309	34.29
4.	Douglas, Sinai - FGCU	8	264	32.95
5.	Barreto, Ana - Queens	10	321	32.13
6.	Angeles, Althea Kara - EKU	11	344	31.29
7.	Woods, Kenleigh - EKU	11	341	31.01
8.	Donald, Asia - UWG	9	279	30.95
9.	Colvin, Dayuna - Queens	10	309	30.86
10.	Sheals, Anovia - APSU	7	216	30.80
11.	Mapp, Jermainy - Queens	10	307	30.67
12.	Heard, Molly - Lips	11	327	29.76
13.	Smith, Ava - BU	12	356	29.69
14.	Jones, Jasmine - UWG	9	267	29.62
15.	Ralston, Triniti - BU	11	321	29.22

Team Identification

Team	Team ID
Austin Peay	APSU
Bellarmine	BU
Central Ark.	UCA
Eastern Ky.	EKU
FGCU	FGCU
Jacksonville	JVile
Lipscomb	Lips
North Ala.	UNA
North Florida	UNF
Queens (NC)	Queens
Stetson	Stet
West Ga.	UWG



2025-26 BELLARMINE WOMEN'S BASKETBALL



2025-26 BOX SCORES

1
11/3/25

SPALDING
BELLARMINE

51
77

KNIGHTS HALL/LOUISVILLE, KY

Spalding - 51													Record: 0-0												
NO.	Name	Min	FG	3P	FT	Rebounds	Fouls	TP	AS	TO	ST	Blocks	BA	Shooting By Points											
		Min	FG	3P	FT	Reb	Fouls	TP	AS	TO	ST	Blk	BA	1st	FG	3P	FT	Reb	Fouls	TP	AS	TO	ST	Blk	BA
20	Zanyia Batiste	30:07	2-13	0-0	5-7	4	10	14	3	7	9	1	2	0	1	1	24								
5	McKayla Lutz	05:02	2-4	1-0	0-0	1	1	2	3	0	1	2	1	0	0	0	16								
4	A'Najia Russell	02:07	1-3	1-1	2-2	0	1	1	1	1	1	2	1	0	0	0	16								
24	Nicole Hollowell	02:25	0-3	0-0	0-0	1	1	1	1	4	4	1	1	0	0	0	21								
35	Nu'Veah Raphael	02:13	1-7	0-0	0-0	0	2	2	1	1	2	0	0	0	0	0	25								
1	Gabby Douglas	03:59	4-14	1-4	3-6	1	4	5	2	4	10	6	1	0	0	0	12								
10	Mya Bennett	05:10	0-1	0-0	0-0	1	2	3	2	0	0	0	0	0	0	0	4								
11	Brooke McNeal	19:50	3-8	3-6	2-2	0	2	1	1	1	1	2	2	1	1	0	9								
35	Breanna Bauer	10:24	1-2	0-0	0-0	1	1	1	1	1	1	1	1	0	0	0	4								
32	Zur King	01:55	0-2	0-0	0-0	1	0	1	0	0	0	0	0	0	0	0	0								
15	Kennedy Brown	08:04	0-2	0-2	0-0	1	1	2	0	0	0	0	0	0	0	0	1	4							
Totals		14:59	19-39	10-20	9-29	38	51	8	16	7	2	2	26												
Major Fouls: NONE													Record: 0-0												
NO.	Name	Min	FG	3P	FT	Rebounds	Fouls	TP	AS	TO	ST	Blocks	BA	Shooting By Points											
		Min	FG	3P	FT	Reb	Fouls	TP	AS	TO	ST	Blk	BA	1st	FG	3P	FT	Reb	Fouls	TP	AS	TO	ST	Blk	BA
10	Kaycee Hyman	19:47	3-8	0-1	4-4	1	1	2	5	2	0	3	1	0	1	0	17								
50	Kendall Winger	02:15	3-7	2-6	1-1	0	4	4	0	1	9	6	0	1	0	0	19								
4	Trinit Ralston	02:42	2-8	0-1	9-10	1	10	10	1	9	10	2	1	0	0	0	28								
5	Ashlee Harris	02:59	4-6	2-4	0-0	1	5	6	0	1	10	1	1	0	0	0	19								
7	Rose Jamison	10:42	1-3	0-0	0-0	1	4	2	1	2	0	1	0	0	0	0	15								
2	Rachel Shropshire	20:53	3-6	2-4	1-2	4	6	1	3	2	2	2	2	0	0	0	3								
13	Hayya Abdul Aal	20:45	6-11	0-0	0-2	7	9	1	1	12	10	1	1	0	0	0	13								
3	Ava Smith	19:13	3-6	0-0	0-0	9	2	2	9	5	9	0	2	0	0	0	9								
24	Patricia Sherrill	09:28	1-6	0-0	3-4	1	4	3	1	1	2	0	0	0	0	0	7								
14	Andreea Chigambura	10:16	1-7	0-1	0-0	3	0	1	0	2	0	0	0	0	0	0	2								
Team						4	1	0	0	0	0	0	0												
Totals		20:49	7-23	10-24	17	38	55	19	20	77	19	13	12	2	26										
Major Fouls: NONE													Record: 1-0												
NO.	Name	Min	FG	3P	FT	Rebounds	Fouls	TP	AS	TO	ST	Blocks	BA	Shooting By Points											
		Min	FG	3P	FT	Reb	Fouls	TP	AS	TO	ST	Blk	BA	1st	FG	3P	FT	Reb	Fouls	TP	AS	TO	ST	Blk	BA
10	Kaycee Hyman	19:47	3-8	0-1	4-4	1	1	2	5	2	0	3	1	0	1	0	17								
50	Kendall Winger	02:15	3-7	2-6	1-1	0	4	4	0	1	9	6	0	1	0	0	19								



2025-26 BELLARMINE WOMEN'S BASKETBALL



2025-26 BOX SCORES

7
11/28/25

BELLARMINE
ETSU

49
55

KFC YUM! CENTER/LOUISVILLE, KY

Bellarmine - 49		Record: 3-5															
NO.	Name	Min	FG	3P	FT	Rebounds	Fouls	TP	AS	TO	ST	Blocks	pts	fg	3pt	ft	pts
14	Andrea Chiquemba	29:48	6-8	5-5	0-0	1	4	5	1	1	2	0	1	0	1	0	14
3	Ava Smith	07:44	0-0	0-0	0-0	1	3	4	1	1	2	0	0	1	0	0	0
4	Tyrell Ralston	04:24	1-8	0-1	6-8	0	8	5	8	1	3	2	0	2	0	0	2
5	Kayla Hyman	05:00	0-8	0-3	2-2	0	0	2	1	1	2	0	0	2	0	0	2
7	Rose Jamison	03:45	3-9	2-4	1-2	4	7	11	1	3	9	2	3	2	0	1	9
2	Rachel Shingore	21:31	3-5	2-2	1-2	4	5	1	2	8	4	0	1	1	1	0	10
12	Kayla Hyman	16:28	1-2	0-0	0-0	1	4	5	2	0	1	0	0	0	0	0	5
24	Palencia Sherrill	04:20	0-1	0-0	0-0	0	0	0	0	0	0	2	0	0	0	0	0
Team						1	1	2	0	0	2	2					
Totals		14:47	9-25	12-17	9-31	40	13	16	49	10	17	4	2	5	6	4	
Major Fouls:		NONE															

ETSU - 55		Record: 3-5															
NO.	Name	Min	FG	3P	FT	Rebounds	Fouls	TP	AS	TO	ST	Blocks	pts	fg	3pt	ft	pts
2	Rachel Downing	27:14	5-13	0-0	3-3	0	1	4	3	2	13	0	1	0	1	0	11
0	Pagie Lyons	07:31	0-3	0-1	0-0	3	0	0	0	0	0	0	0	0	0	0	0
10	Camille Richardson	03:40	2-7	1-5	2-2	0	5	3	3	7	2	2	0	0	0	0	8
15	Jaidyn Harper	03:02	2-10	1-7	2-2	2	5	7	1	7	0	0	0	0	0	0	2
32	Emman Mc-Arce	10:17	0-3	0-0	0-0	1	2	0	0	0	0	0	0	0	0	0	0
1	Lundy Hood	12:38	2-6	0-0	0-0	0	0	0	0	0	0	0	0	0	0	0	5
5	Gamma Gidner Bacoul	04:40	0-1	0-1	0-0	1	1	0	0	0	0	0	0	0	0	0	0
7	Quiana Luper	21:38	2-6	1-5	0-0	3	5	1	0	0	0	0	0	0	0	0	5
21	Kennedy Younk	05:08	1-4	0-0	0-0	1	1	0	2	0	1	0	1	0	0	0	1
24	Amala Nelson	26:58	2-6	0-1	4-4	8	8	4	3	8	0	0	1	1	0	0	10
3	Sallynna Monarato	16:12	0-1	0-2	1-4	2	3	5	0	0	1	1	0	0	0	0	0
11	Lacita Francis	07:38	1-1	0-0	0-0	2	4	0	0	2	0	0	0	0	0	0	3
8	Kenneth Boyd	02:15	0-0	0-0	0-0	0	0	0	0	0	0	0	0	0	0	0	0
Team						2	0	2	0	0	0	0					
Totals		19:47	9-25	12-17	44-74	18	13	55	11	1	4	2	4				
Major Fouls:		NONE															

	BEL	ETS
Biggest lead	12 (1 st 1:02)	6 (4 th 1:18)
Best Scoring Run	6 (1 st 7:53)	9 (3 rd 5:54)
Lead Changes	1	1
Times Tied	1	1
Time with Lead	22:01	16:13

Points from	BEL	ETS
Turnovers	6	16
Paint	8	24
Second Chance	8	10
Fast Breaks	0	2
Bench	11	28

Period by Period Scoring					
	1st	2nd	3rd	4th	TOT
BEL	22	6	11	10	49
ETS	13	10	19	13	55

10
12/2/25

BELLARMINE
ILLINOIS

41
90

STATE FARM CENTER/CHAMPAIGN, IL

Bellarmine - 41		Record: 3-6															
NO.	Name	Min	FG	3P	FT	Rebounds	Fouls	TP	AS	TO	ST	Blocks	pts	fg	3pt	ft	pts
2	Rachel Shingore	21:31	1-7	0-1	1-2	1	6	7	2	1	1	0	1	0	1	0	3
12	Kayla Hyman	19:02	2-7	1-2	4-4	1	0	1	4	2	9	0	0	2	0	0	10
14	Andrea Chiquemba	29:28	1-8	1-4	0-0	2	2	1	0	2	1	1	0	1	0	0	4
4	Tyrell Ralston	08:48	1-7	0-3	5-6	0	1	1	7	7	2	0	0	0	0	0	4
7	Rose Jamison	03:57	0-13	1-6	2-3	0	2	2	2	1	1	0	0	0	0	0	0
3	Ava Smith	08:50	0-11	0-6	0-0	1	4	5	1	0	0	0	0	0	0	0	0
24	Palencia Sherrill	16:18	0-1	0-1	1-2	1	3	4	1	1	0	0	0	0	0	0	1
13	Hayla Abdul Aal	12:04	1-2	0-0	0-0	2	2	0	0	0	0	0	0	0	0	0	2
Team						1	2	3	0	0	1	0					
Totals		11:56	6-28	13-17	7-20	27	30	16	41	7	20	5	4	4			
Major Fouls:		NONE															

Illinois - 90		Record: 7-1															
NO.	Name	Min	FG	3P	FT	Rebounds	Fouls	TP	AS	TO	ST	Blocks	pts	fg	3pt	ft	pts
23	Berry Wallace	18:42	4-9	0-3	0-0	3	6	0	0	0	0	0	0	0	0	0	8
30	Carson Parchment	11:20	0-12	0-2	4-4	6	6	12	1	2	16	3	1	0	0	0	0
2	Destiny Jackson	02:15	0-2	0-0	1-4	1	5	3	10	7	2	0	0	0	0	0	0
4	Destiny Dorian	06:48	4-9	2-3	1-1	1	4	5	1	2	11	4	2	0	0	0	10
8	Jasmine Brown-Hagger	01:14	0-3	0-0	0-2	2	4	2	4	0	0	0	0	0	0	0	0
1	Aaliyah Guyton	24:45	4-11	0-2	2-2	3	1	4	1	10	4	0	0	0	0	0	10
34	Madison Webster	18:01	4-10	1-4	0-2	1	2	2	0	0	3	2	0	0	0	0	10
30	Lady Vasconcelos	14:05	3-7	0-0	0-0	2	7	0	0	1	0	0	0	0	0	0	6
6	Hana Noya Catello	15:49	3-6	0-2	1-2	3	6	1	2	7	1	1	1	0	0	0	7
25	Haley Smith	09:16	0-2	0-0	0-0	1	2	3	0	0	0	0	0	0	0	0	0
12	Mia Zenger	09:04	0-2	0-1	0-0	0	0	0	1	0	0	0	0	0	0	0	0
24	Gianna Corbelli	08:21	0-1	0-0	1-1	0	0	0	1	0	0	0	0	0	0	0	0
21	Norah Benson	02:54	2-2	0-0	0-0	1	1	0	0	0	0	0	0	0	0	0	4
Team						1	5	6	0	0	0	0					
Totals		36:52	20-32	10-19	27-37	31	54	16	20	23	13	10	4	4			
Major Fouls:		NONE															

	BEL	ILL		BEL	ILL	Period by Period Scoring					
Biggest lead	0 (1 st 10:00)	53 (4 th 2:19)	Points from				1 st	2 nd	3 rd	TOT	
Best Scoring Run	5 (2 nd 9:53)	15 (2 nd 8:35)	Turnovers	9	29						
Lead Changes	0		Paint	6	62	BEL	11	12	5	13	41
Second Chance	0		Fast Breaks	0	21						
Times Tied	0		Bench	12	39	ILL	32	23	23	12	90
Time with Lead	00:00	39:34									

8
11/29/25

EASTERN ILLINOIS
BELLARMINE

68
63

KNIGHTS HALL/LOUISVILLE, KY

Eastern Ill. - 68		Record: 1-8															
NO.	Name	Min	FG	3P	FT	Rebounds	Fouls	TP	AS	TO	ST	Blocks	pts	fg	3pt	ft	pts
1	Elia Luna	28:13	0-3	0-0	0-0	4	2	0	2	1	0	2	0	0	0	0	0
14	Melissa Chiquemba	20:50	2-4	0-0	5-8	0	3	1	5	9	2	0	0	1	0	0	8
3	Ava Smith	07:21	1-2	0-0	0-0	3	3	3	2	1	3	1	0	1	0	0	4
11	Claire Glad	01:10	3-7	2-6	2-2	4	3	7	2	2	10	1	1	1	0	0	9
2	Troy Lewis	03:36	4-11	2-9	2-2	0	0	3	2	2	13	1	2	1	0	0	2
2	Kennedy Davis	00:00	0-0	0-0	0-0	3	6	0	3	4	5	4	0	0	0	0	0
50	Abbie Boutlier	14:15	1-2	0-0	0-0	0	0	3	2	1	0	0	2	2	0	0	5
25	Nyah Hardy	05:10	0-1	0-0	0-0	0	0	0	0	0	0	0	0	0	0	0	0
7	Laura Buchanan	00:50	0-0	0-0	0-0	0	0	0	0	0	0	0	0	0	0	0	0
10	Adriana Amayo	07:48	3-6	3-5	0-0	0	0	2	0	0	0	0	0	0	0	0	9
Team						2	8	10	0	0	2	0					
Totals		20:54	11-30	17-27	13-28	41	17	20	68	13	14	11	4	1	5		
Major Fouls:		NONE															

Bellarmine - 63		Record: 3-6															
NO.	Name	Min	FG	3P	FT	Rebounds	Fouls	TP	AS	TO	ST	Blocks	pts	fg	3pt	ft	pts
2	Rachel Shingore	21:16	0-4	0-3	1-2	0	3	4	2	1	1	0	0	0	1	0	1
14	Andrea Chiquemba	29:20	4-10	2-6	2-4	1	2	3	2	12	0	0	0	1	0	0	10
3	Ava Smith	07:18	0-4	0-3	1-2	0	3	4	2	1	1	0	0	0	0	0	1
5	Ashlee Harris	01:07	1-2	0-0	2-2	0	0	0	1	4	0	0	0	0	0	0	2
7	Rose Janzen	03:47	3-4	1-4	2-2	3	5	8	2	1	9	1	3	1	0	0	8
10	Allyssa Smith	03:40	3-11	2-8	0-0	1	6	7	8	0	1	3	0	0	0	0	6
10	Kayce Korman	27:15	2-8	0-0	0	1	2	3	5	2	4	0	1	0	0	2	4
24	Patricia Sherrell	12:27	0-0	0-0	0-0	0	3	0	0	0	0	0	0	0	0	0	0
Totals		3	0	0	0	0	0	0	0	0	0	0	0	0	0	0	0
		16:19	9	25	34	0	17	83	7	15	6	1	4	5	0	0	34
Major Fouls: NONE																	



0
Miyah Brown
5-10 • G • SR
Rockford IL



2
Rachel Shropshire
6-3 • F • SO
Frankfort, KY



3
Ava Smith
5-8 • G • SO
Camas, WA



4
Triniti Ralston
5-5 • G • JR
Louisville, KY



5
Ashlee Harris
5-6 • G • GR
Louisville, KY



7
Rose Jamison
6-0 • G/F • RS-JR
Fairfield, CA



11
Anna Rodgers
5-11 • G/F • SO
Mt. Washington, KY



12
Kayce Hyman
5-10 • F • SO
Irmo, SC



13
Haya Abdel Aal
6-4 • C • FR
Alexandria, Egypt



14
Andrea Chiquemba
6-1 • F • RS-JR
Vila Nova de Gaia, Portugal



20
Erin Toller
5-7 • G • GR
Louisville, KY



34
Patricia Sherrill
6-1 • C • GR
Alexandria, VA



35
Hana Abdel Aal
6-2 • C • SO
Alexandria, Egypt



55
Kendall Wingler
5-9 • G • GR
Ekron, KY



Monique Reid
Head Coach



Alison McCarthy
Assistant Coach/



Camille McLellan
Assistant Coach



Shaqwedia Wallace
Assistant Coach



Clayton Bachman
Graduate Assistant



Logan Powell
Director of Ops